

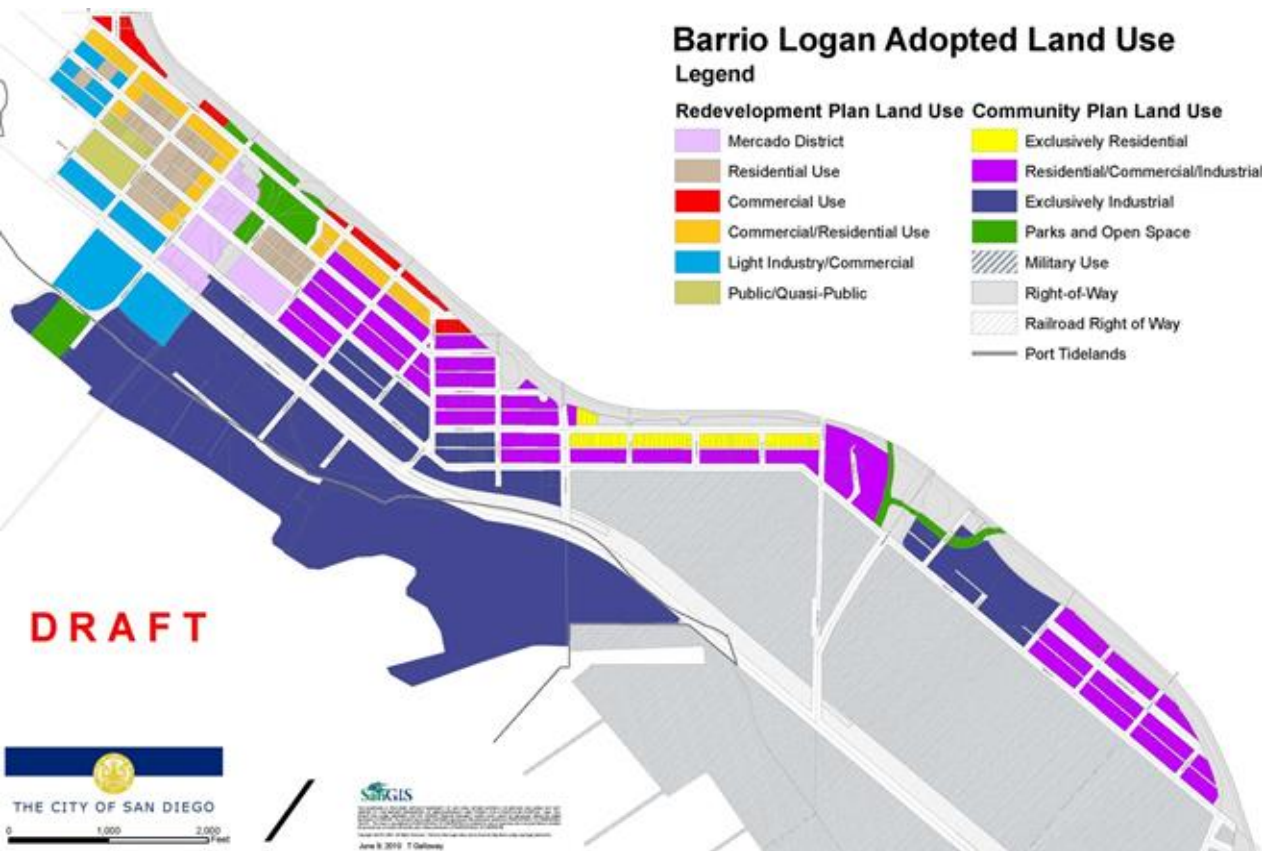
BARRIO LOGAN COMMUNITY PLANNING GROUP

DRAFT PROPOSAL

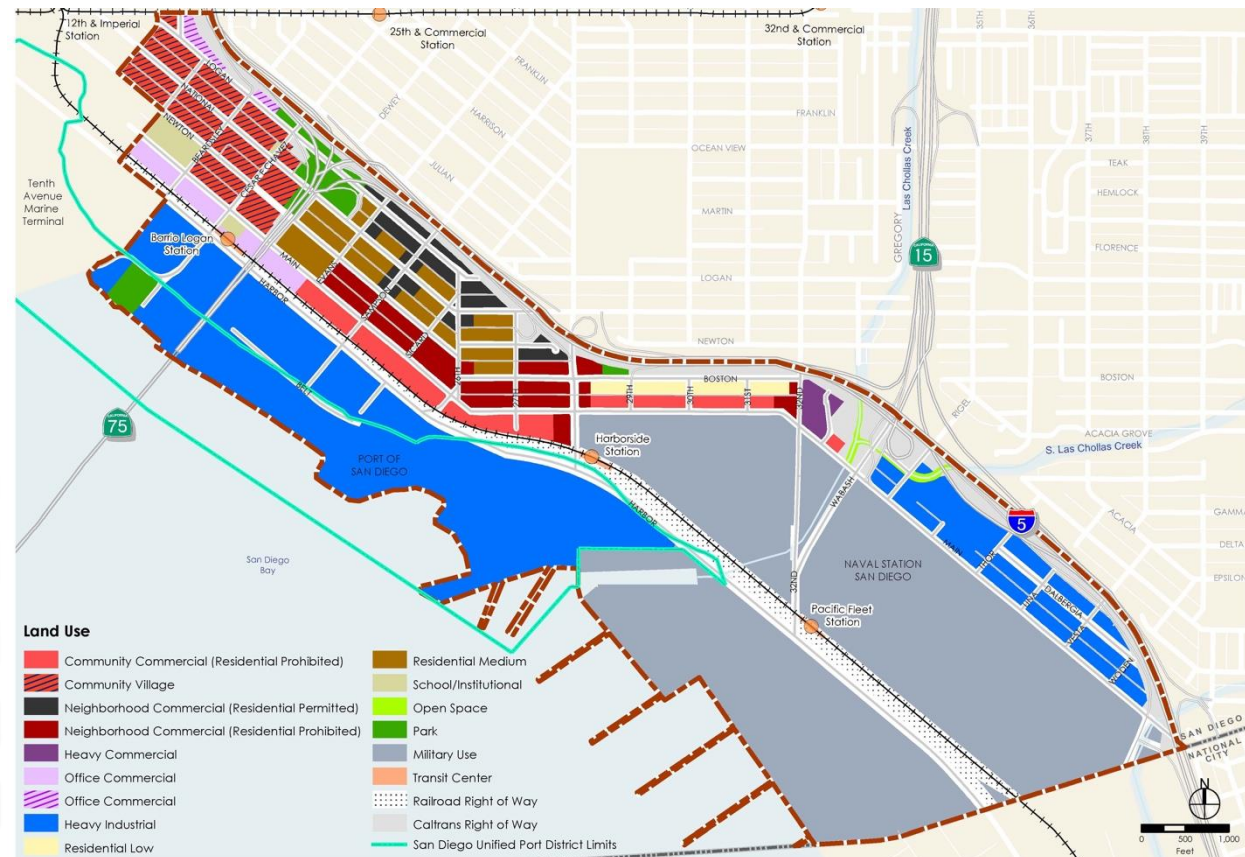
FEBRUARY 19,
2020

Background

1978 Land Use Map (Current Plan)



2013 Draft Land Use Map (Rescinded Plan)



Draft Proposal

2020 Draft Proposal (Per MOU)

- I. Maritime Commercial
- II. Prohibited Uses (Table 1)
- III. Community Commercial
- IV. Neighborhood Commercial
- V. Boston Avenue Residential

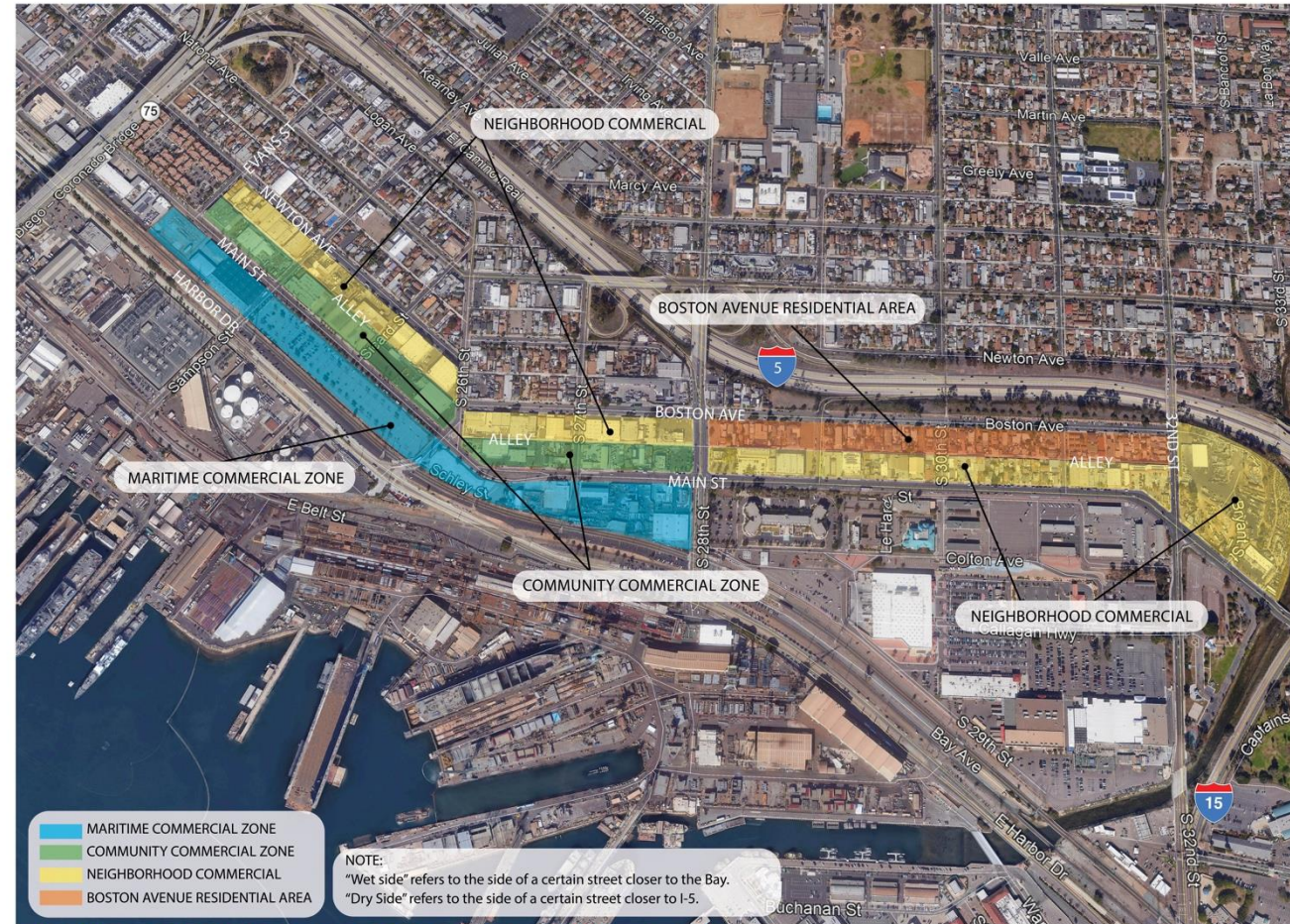


FIGURE 1: BARRIO LOGAN AREAS (Refer to MOU for details)
FEBRUARY 10, 2020 (DRAFT)

