

Planning Department

Barrio Logan Community Planning Group

Community Plan Update – Revised Option

Item No. 8

August 19, 2020

- 1** Background – Previous CPU Options
- 2** Review July Special Meeting Input
- 3** Present Refined Approach B
- 4** Present Outreach Outline
- 5** Vote to recommend an Approach to complete the CPU



Community Plan Update Options Summary

Approach	A	B	C
Description	2013 CPU with MOU revisions	2013 CPU with MOU revisions and other revisions/additions	Comprehensive Community Plan Update
Overall CPU Timeline	5 to 8 months	12 to 30 months	36 to 48 months
Community Outreach	1 to 3 months	5 to 24 months	30 to 42 months
MOU Revisions	Yes	Yes	Yes
Additional Revisions	No	Some	Full Plan Update
Environmental and Technical Analysis	Limited	Moderate	Greater

July Special CPG Meeting Summary

Approach	A	B
Description	2013 CPU with MOU revisions	2013 CPU with MOU revisions and other revisions/additions
Overall CPU Timeline	5 to 8 months	12 to 30 months
Community Outreach	1 to 3 months	5 to 24 months
MOU Revisions	Yes	Yes
Additional Revisions	No	Some
Environmental and Technical Analysis	Limited	Moderate

- **Consensus for a hybrid approach between A and B**
- **Request for City staff to identify potential 'trigger points' between A and B**
- **Support for a quick and focused outreach process**
- **Discussion of potential outreach tools, including in-person options**

Approach	Refined - B
Description	2013 CPU with MOU revisions and other revisions/additions
Overall CPU Timeline	8 to 12 months*
Community Outreach	2 to 4 months
MOU Revisions	Yes
Additional Revisions	Yes
Environmental and Technical Analysis	Limited

(*estimated timeframe from community kickoff to City Council adoption hearing)

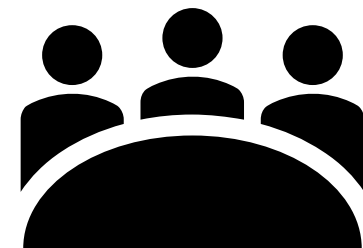
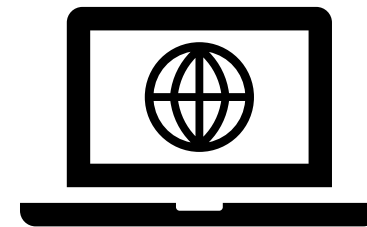
- ✓ **2013 CPU as a starting point**
- ✓ **Focused approach on additional key issues**
- ✓ **2-4 month Outreach Timeline**

Outreach Outline

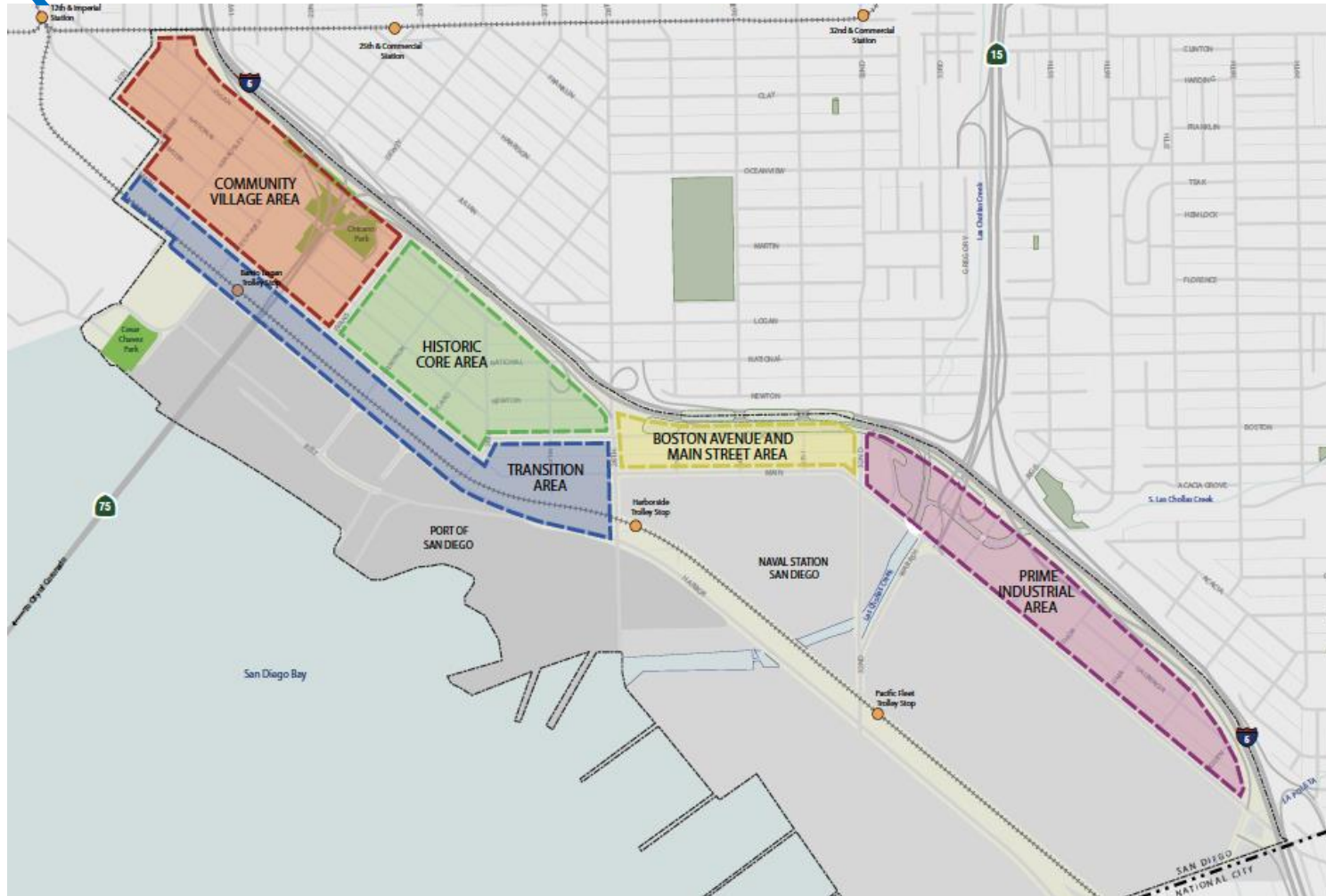
Outreach Timeframe	2 to 4 months
Online Community Workshop Kickoff	1 online workshop <ul style="list-style-type: none"> • CPU background and objectives • Address MOU items
Community Survey	1 online survey to generate broader community feedback
BLCPG Special Meetings (Subcommittee or full CPG)	3 to 4 Special Meetings to cover MOU and land uses by neighborhood
BLCPG Final Recommendation on the proposed CPU	Option 1: Recommendation to approve Option 2: Recommendation to continue outreach to address additional issues

✓ **Multiple outreach opportunities**

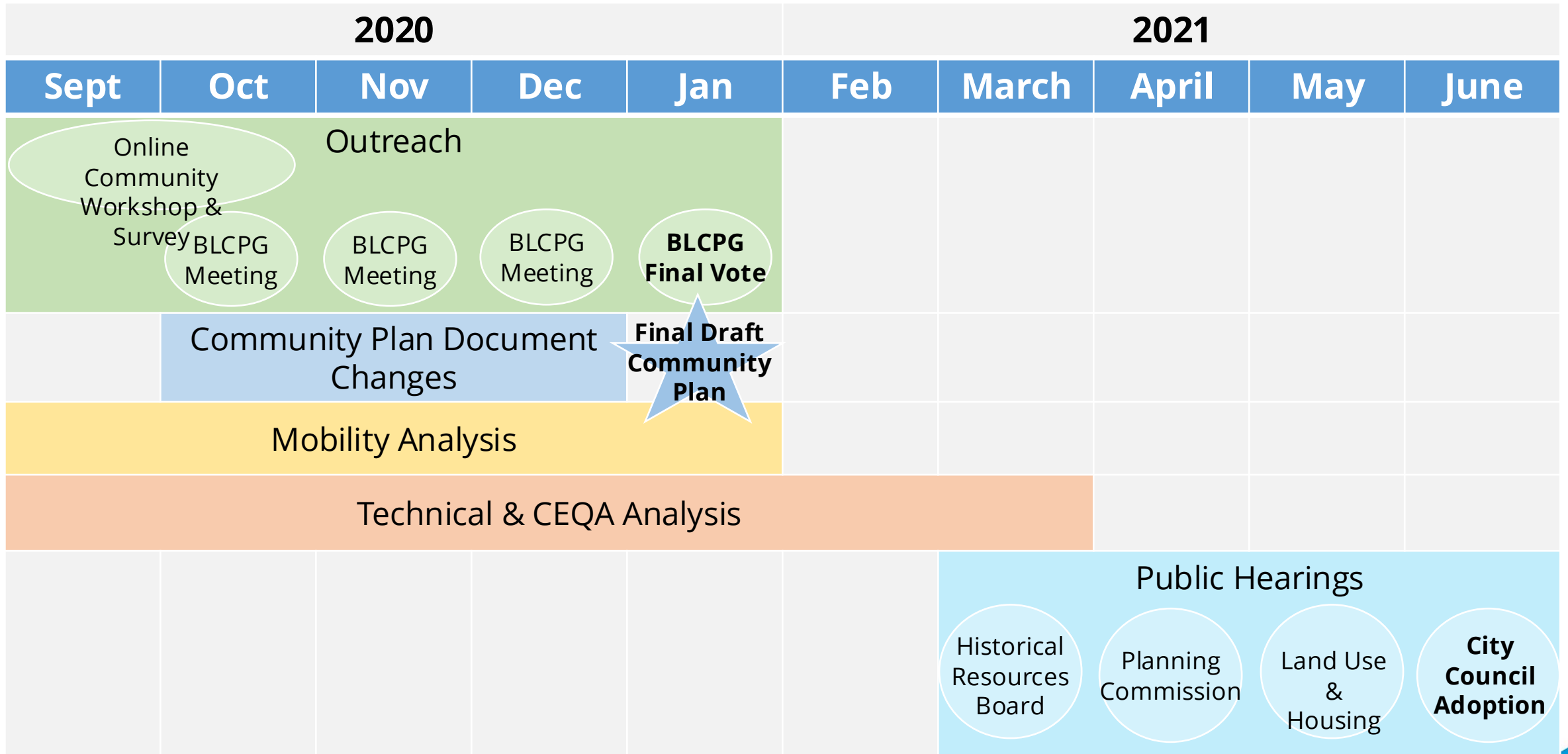
✓ **Land use-focused engagement**



Meeting Framework – Neighborhood Area Focus and Key Questions



- What is allowed today?
- What did the 2013 CPU allow for?
- What changes does the MOU propose to the 2013 CPU?
- What additional revisions should be considered?



Next Steps

- Discuss Approach and Community Engagement Outline
- Vote to recommend an approach for the CPU



Discussion