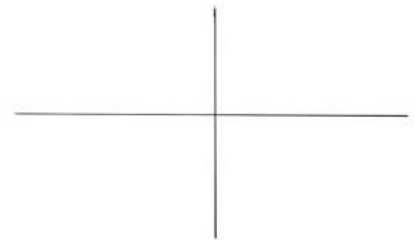


How To Draw Derpy the Tiger From K-Pop Demon Hunters by Janet Yeager

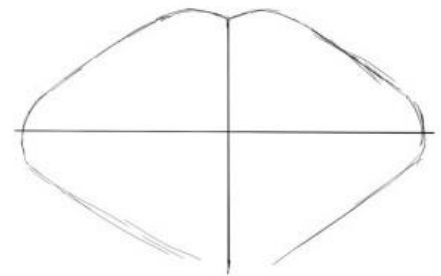
Materials:

- 1 white 8 1/2 x 11 cardstock or any white drawing paper
 - 1 HB #2 pencil
 - 1 Hi-polymer eraser OR 1 Clic Eraser - Pentel brand is recommended for both
 - (OPTIONAL) Colored pencils, crayons, or pens – 1 dark blue, 1 medium blue, 1 light blue, 1 red, 1 yellow, 1 light pink, 1 dark pink
 - (OPTIONAL) 1 Pigma Micron black archival ink pen size 08 or any fine-tipped black felt pen
-

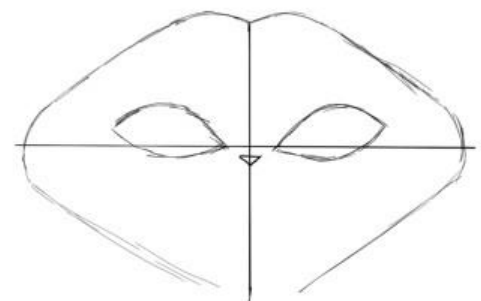
Lightly draw two guidelines with your pencil: one vertical line and one horizontal line. Make the horizontal line slightly longer than the vertical line. These lines are just guides and will be erased later.



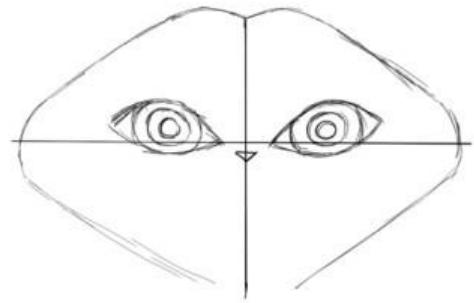
Start at the top of the vertical guideline and draw a flat, wide “M” shape. From each end of the “M,” draw a diagonal line—one slanting down to the left and one slanting down to the right—aiming toward the ends of the horizontal guideline. At each end of the horizontal line, draw a curved line that wraps around the tip. Finally, from those curved ends, draw two more diagonal lines that angle inward toward the bottom of the vertical guideline.



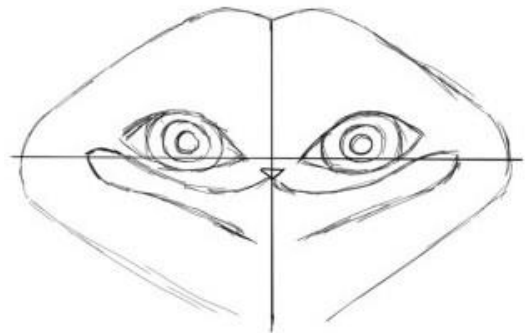
Draw an upside-down triangle just below the horizontal line to create the nose. Next, draw two almond-shaped eyes. Position them so that most of each eye sits above the horizontal line, with only a small portion extending below it.



Inside each almond-shaped eye, draw three circles, one inside the other. Make each circle smaller than the one before it.

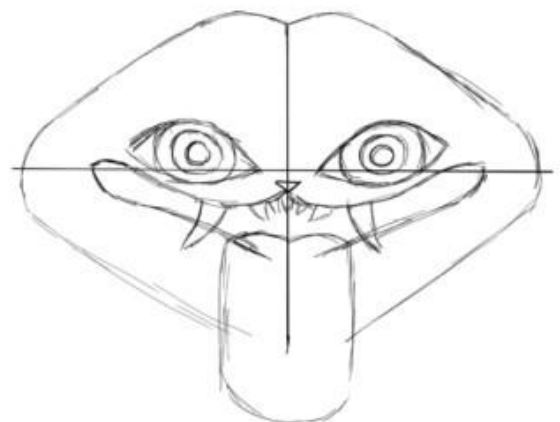


From the bottom point of the nose, draw a curved line extending toward the right eye. Once the line passes the eye, curve it downward.



Below the horizontal guideline, reverse the curve (so it bends upward). As the line approaches the eye area again, transition it into a diagonal or slightly curved line, and draw it toward the vertical guideline.

Repeat these same steps on the left side, starting again from the bottom of the nose and mirroring the shape toward the left eye.

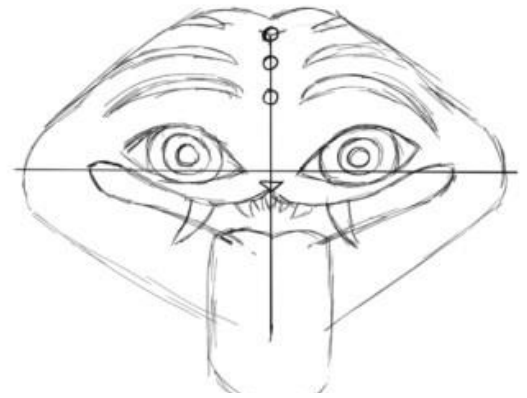


Draw the teeth using slightly angled "V" shapes. Make the teeth near the corners of the mouth larger, and the ones closer to the nose smaller.

For the tongue, start by drawing a flat, wide "M" shape for the top. Then connect a "U" shape to it to form the sides and bottom of the tongue.

Draw a series of connected, curved lines to create Derpy's stripes. Each line should look like a sideways apostrophe, flowing into the next.

Next, draw three circles in a row along the top portion of the vertical guideline.



For the ears, draw slightly angled upside-down "V" shapes on both the right and left sides of the head. Place them just above the ends of the middle stripe. Draw two smaller 'V' shapes inside each ear.

If you'd like to add the letter Derpy is carrying, draw a rectangle near the bottom of the tongue. At the top edge of the rectangle, add a "V" shape.



It is your choice how to complete this project. Some possibilities are shown below.



Inked line art (guidelines erased)



Colored (guidelines erased)