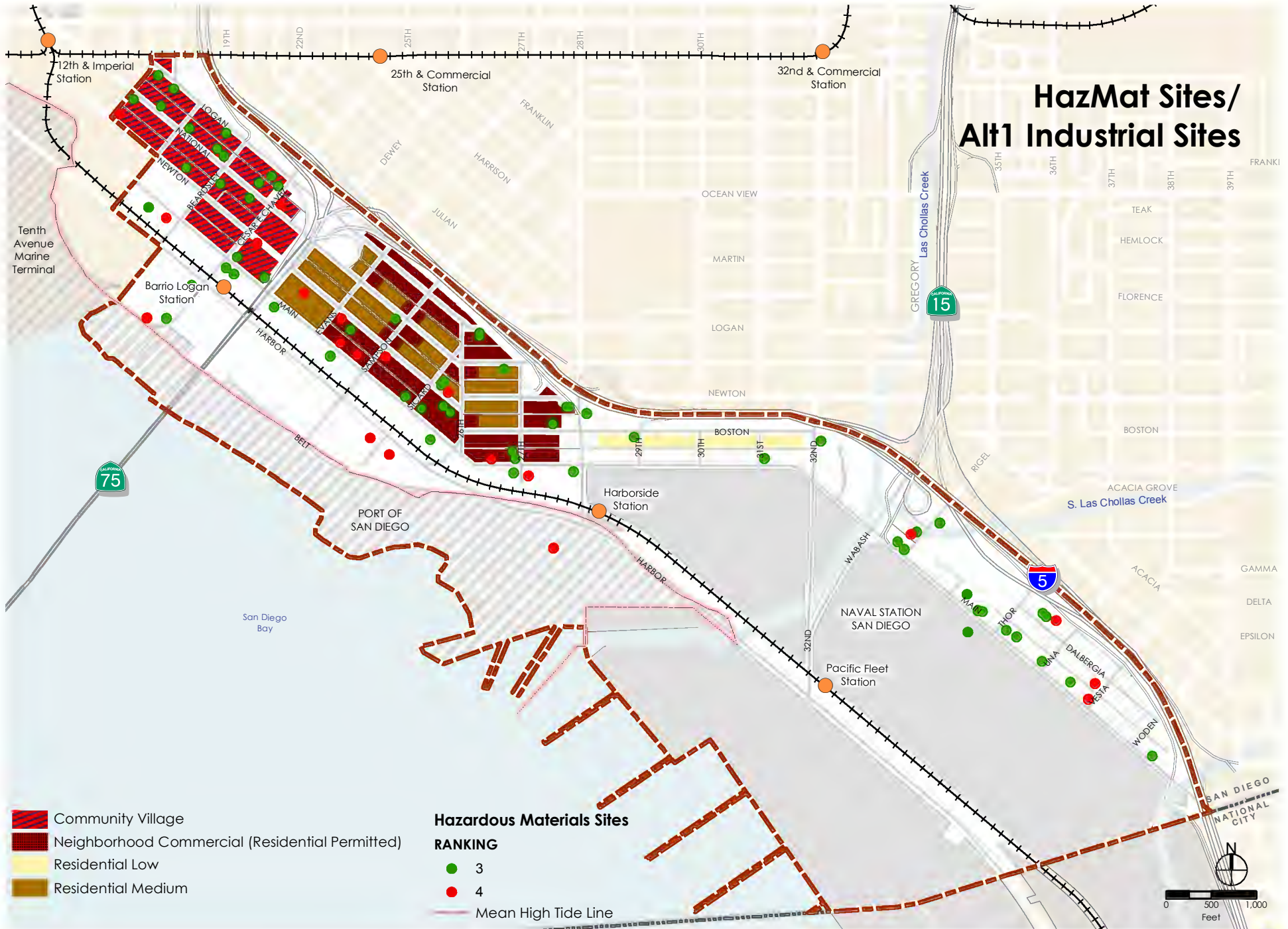


HazMat Sites/ Alt1 Industrial Sites



DRAFT

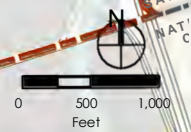


HazMat Sites/ Alt2 Industrial Sites



- Community Village
- Neighborhood Commercial (Residential Permitted)
- Residential Low
- Residential Medium

- Hazardous Materials Sites**
- RANKING**
- 3
 - 4
- Mean High Tide Line



DRAFT