



Stormwater Department Overview

May 28, 2026

SPEAKERS

SUMER HASENIN, PE, MSCE

DEPUTY DIRECTOR

SYHASENIN@SANDIEGO.GOV

ANTHONY SALVANI, PE

ASSOCIATE ENGINEER

ASALVANI@SANDIEGO.GOV

IMAN HOSSEINI-SHAKIB, PHD, PE

ASSOCIATE ENGINEER

IHOSSEINISHA@SANDIEGO.GOV



Outline

- 1 Stormwater Department Overview
- 2 Capital Improvement Planning Efforts
- 3 Funding
- 4 Project Examples



Stormwater Department

Vision

Create vibrant, sustainable communities through innovative flood control and water quality management

Mission

Build and maintain efficient stormwater infrastructure for safe, sustainable and thriving San Diego communities

Stormwater Key Priority Areas



Protect clean water



Ensure flood-safe communities



Provide clean & green streets



Enhance our communities & protect our habitats

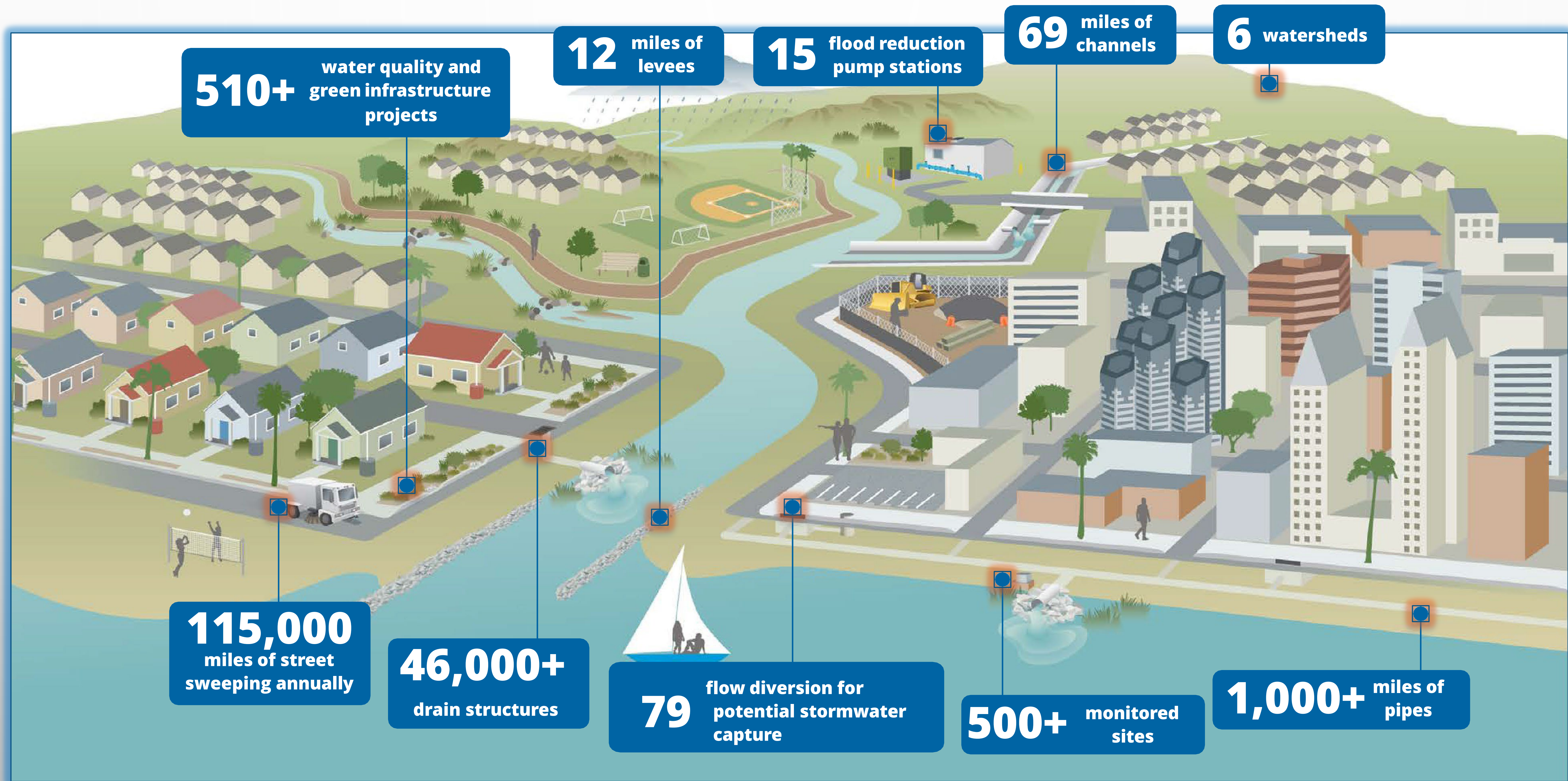


Capture stormwater for use

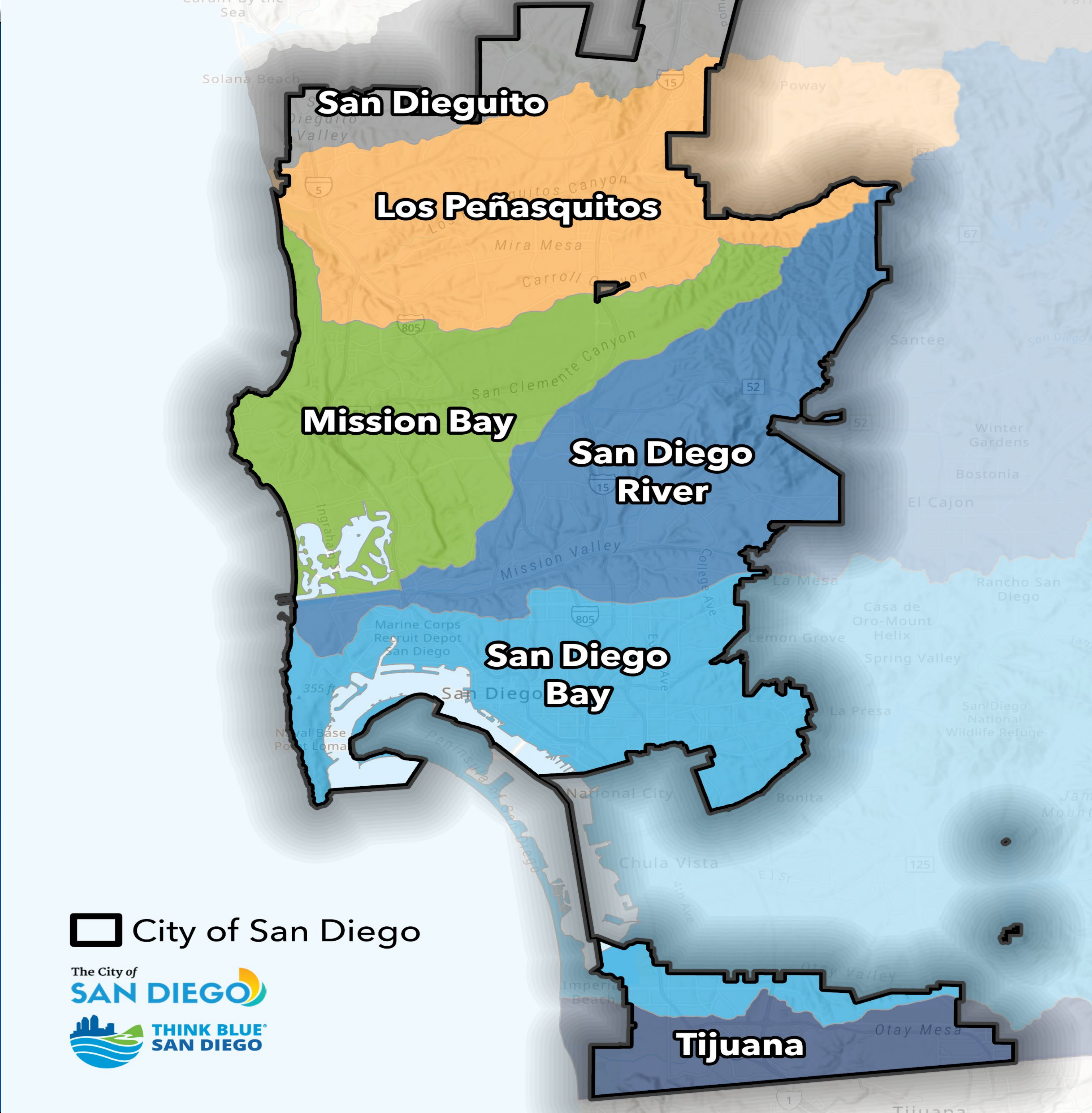


Prioritize education, outreach & engagement

What Do We Do?

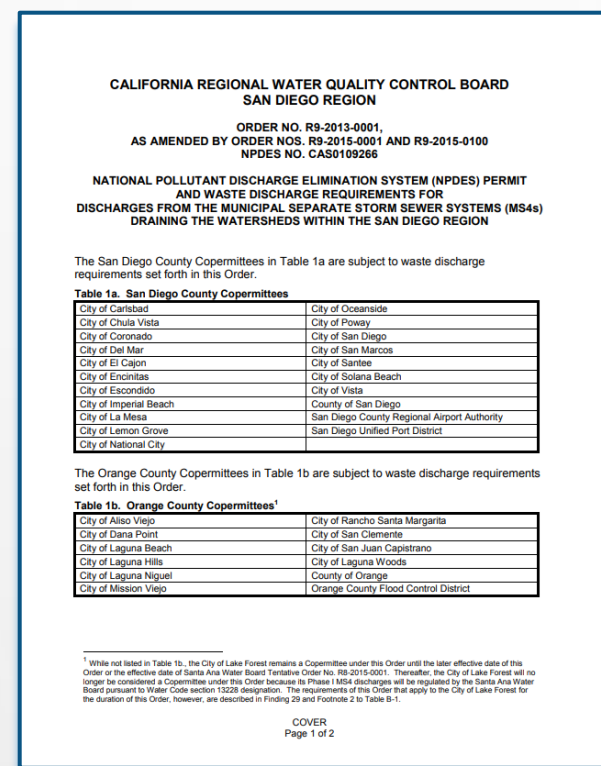


CIP Planning Effort

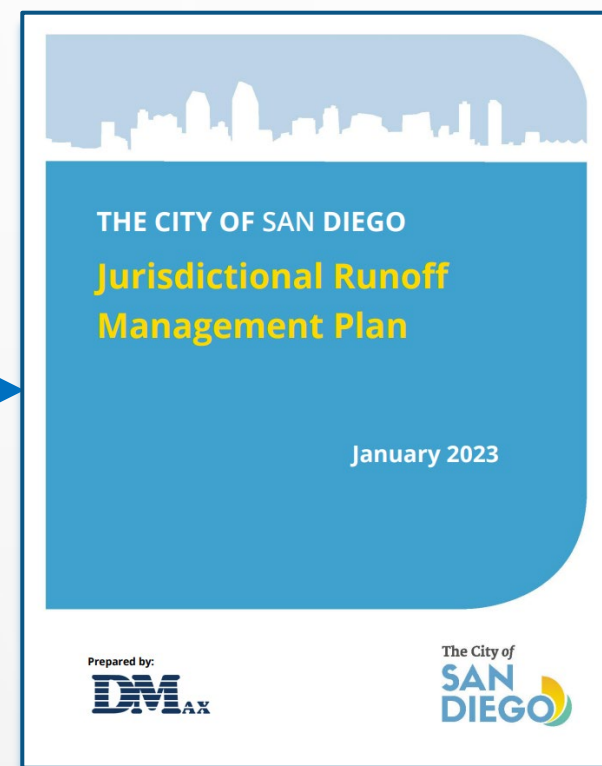




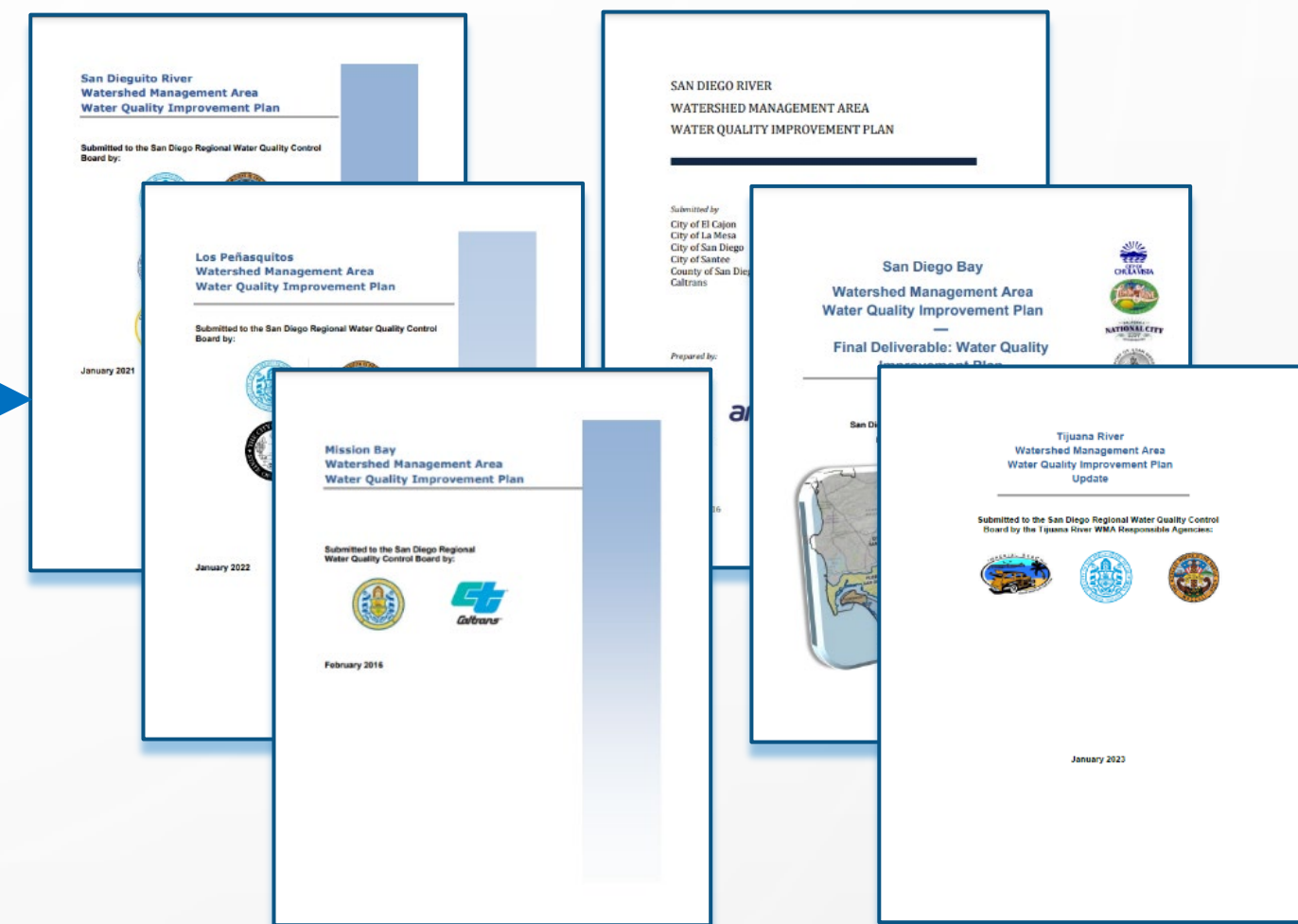
CIP Planning Process



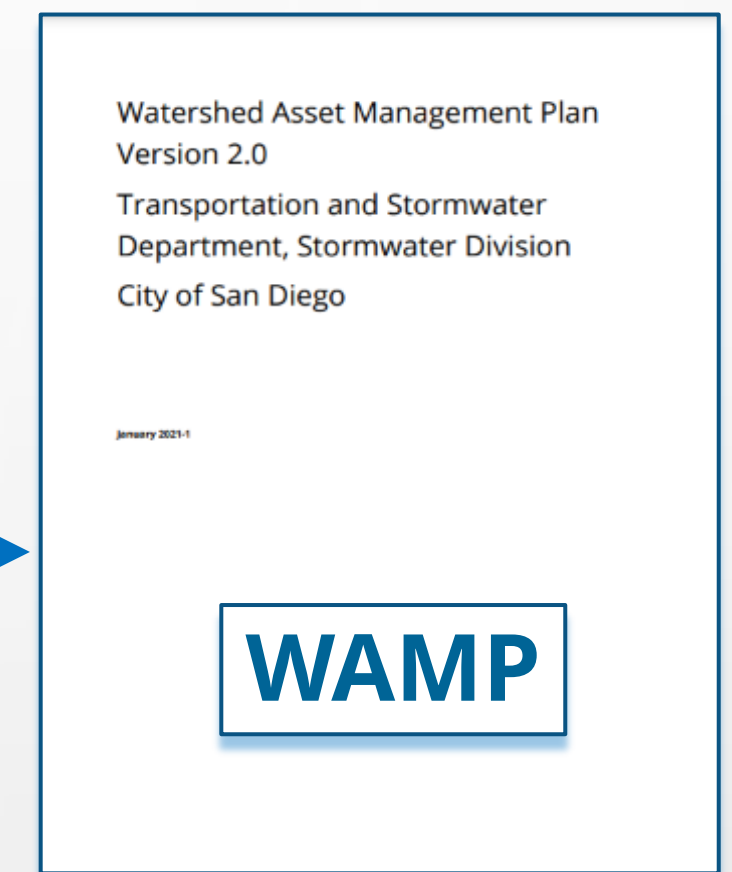
San Diego MS4 Permit



Jurisdictional Runoff Management Plan



Water Quality Improvement Plans

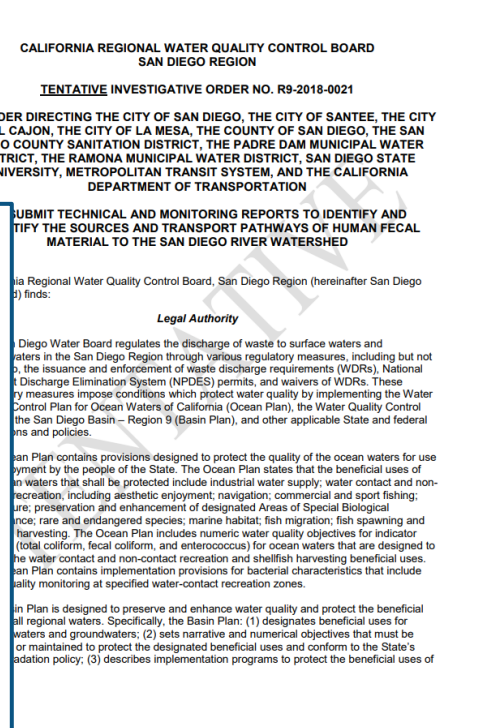


WAMP

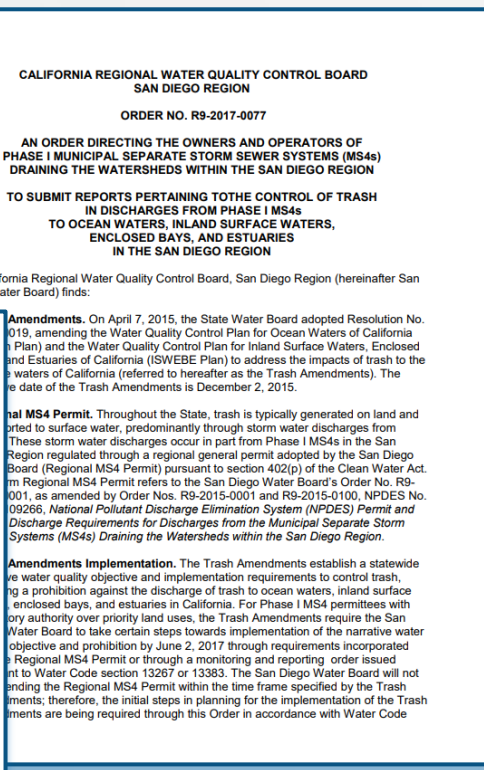
Targeted Studies



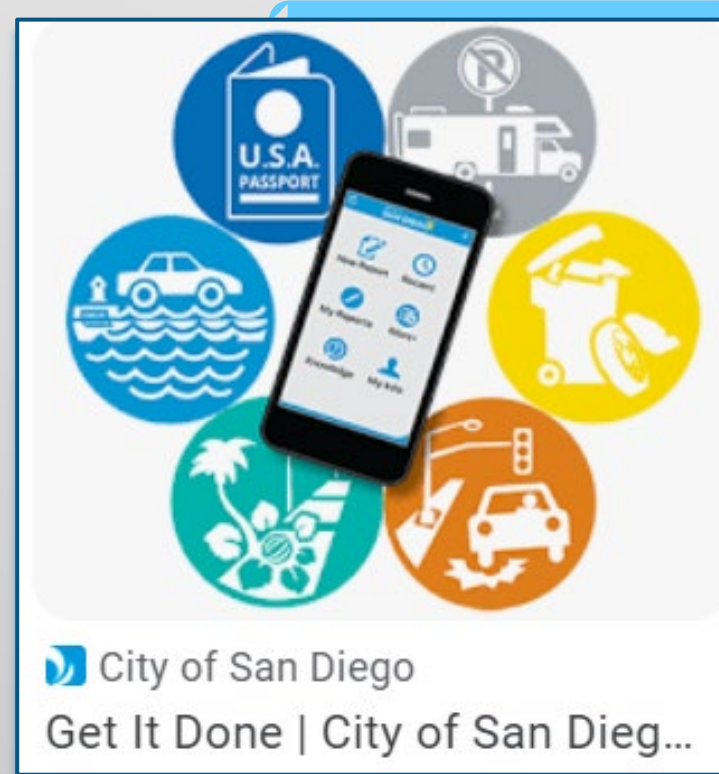
Litigation



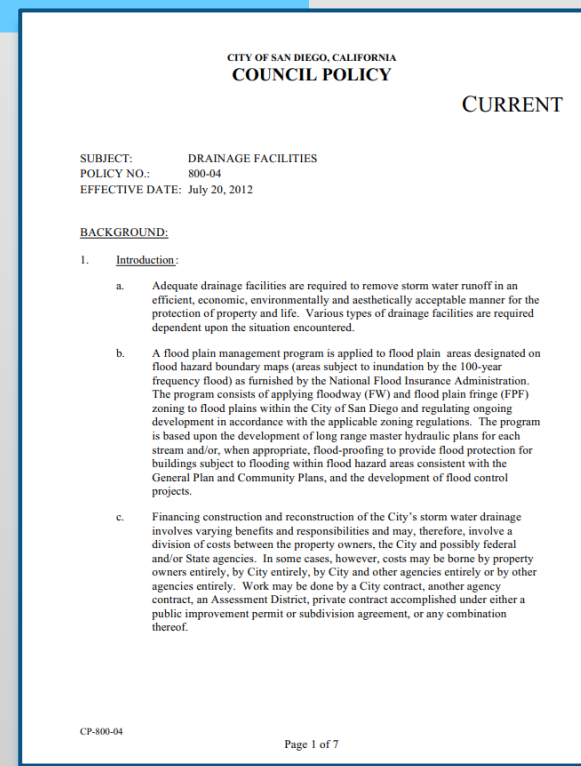
Investigative Orders



Trash Amendment



Get It Done



Needs List

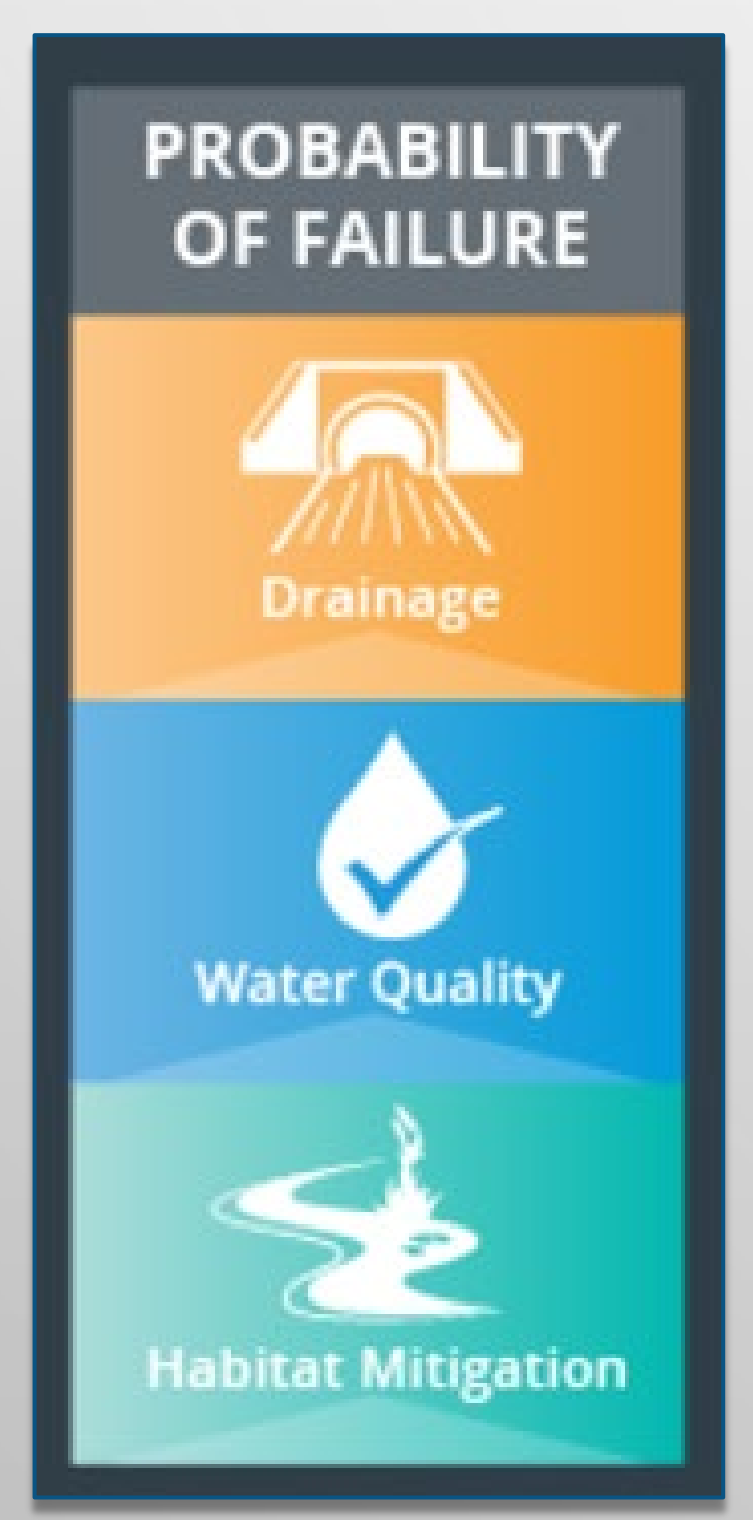
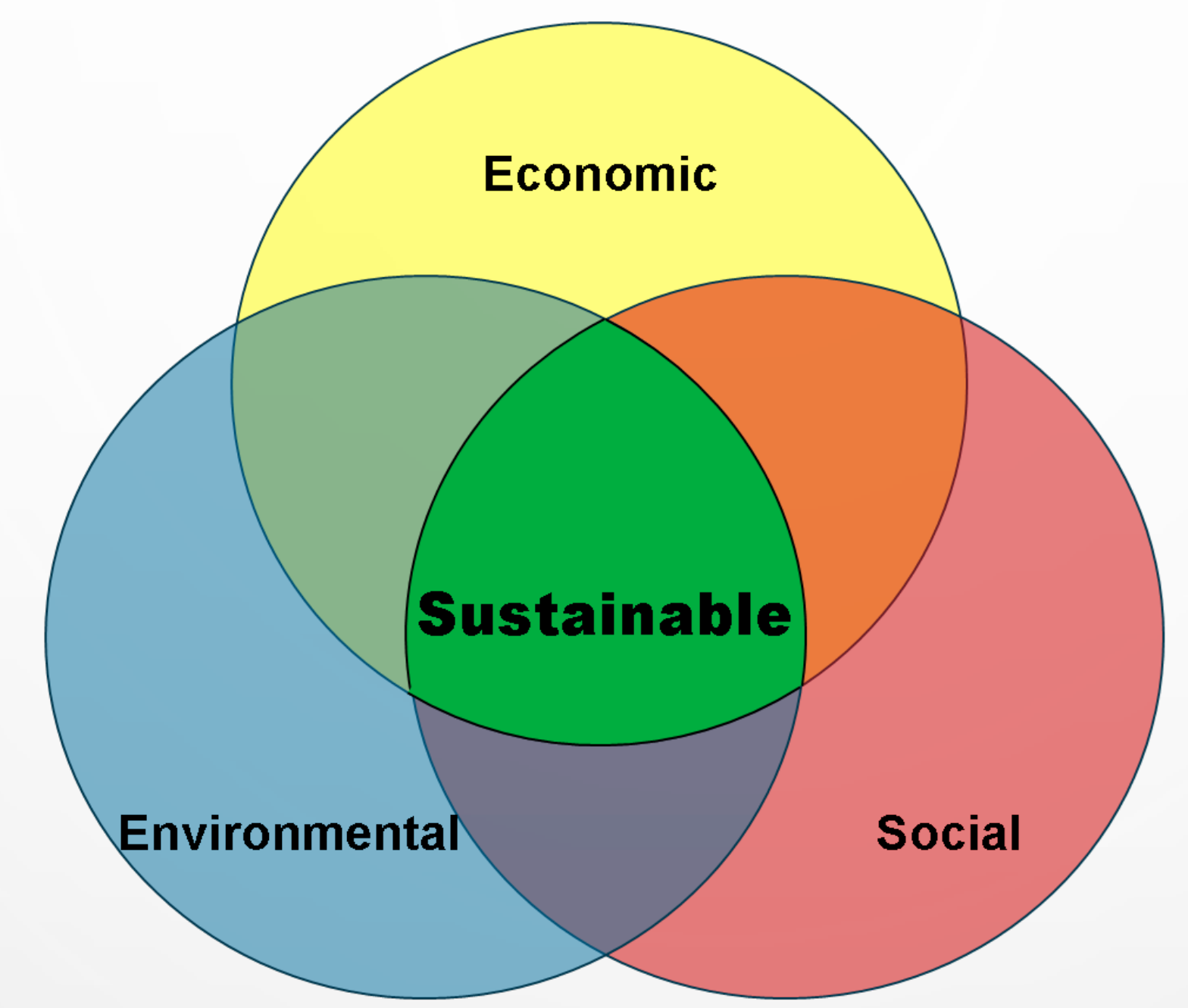


Citywide Strategic Plan, Climate Action Plan, Climate Equity Index



Failure Modes

Capacity
Level of Service
Asset Life
Efficiency



×

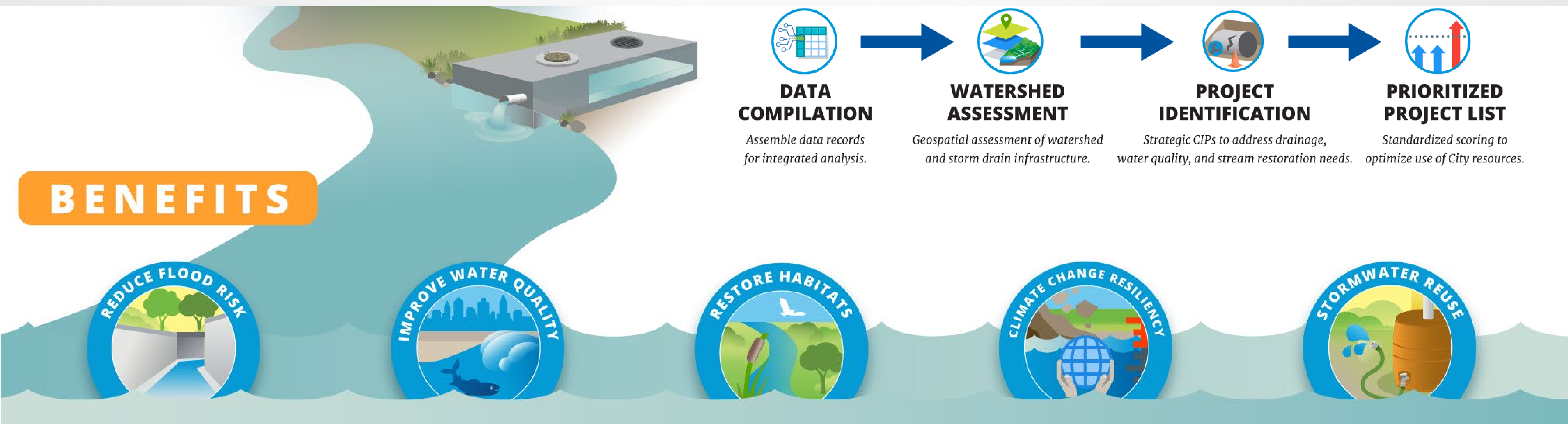


=



Integrated Drainage & Engineering Analysis (IDEA)

- Comprehensive, holistic approach to analyzing a watershed to propose potential CIPs



Climate Change Assessment



Near-term Funding and Financing Options



- **Water Infrastructure Finance and Innovation Act (WIFIA) - \$459M**
- **State Revolving Fund Loan - \$50M**
- **Grants - \$22M**
- **State Community Funds - \$4.3M**
- **City Financing**

Project Examples



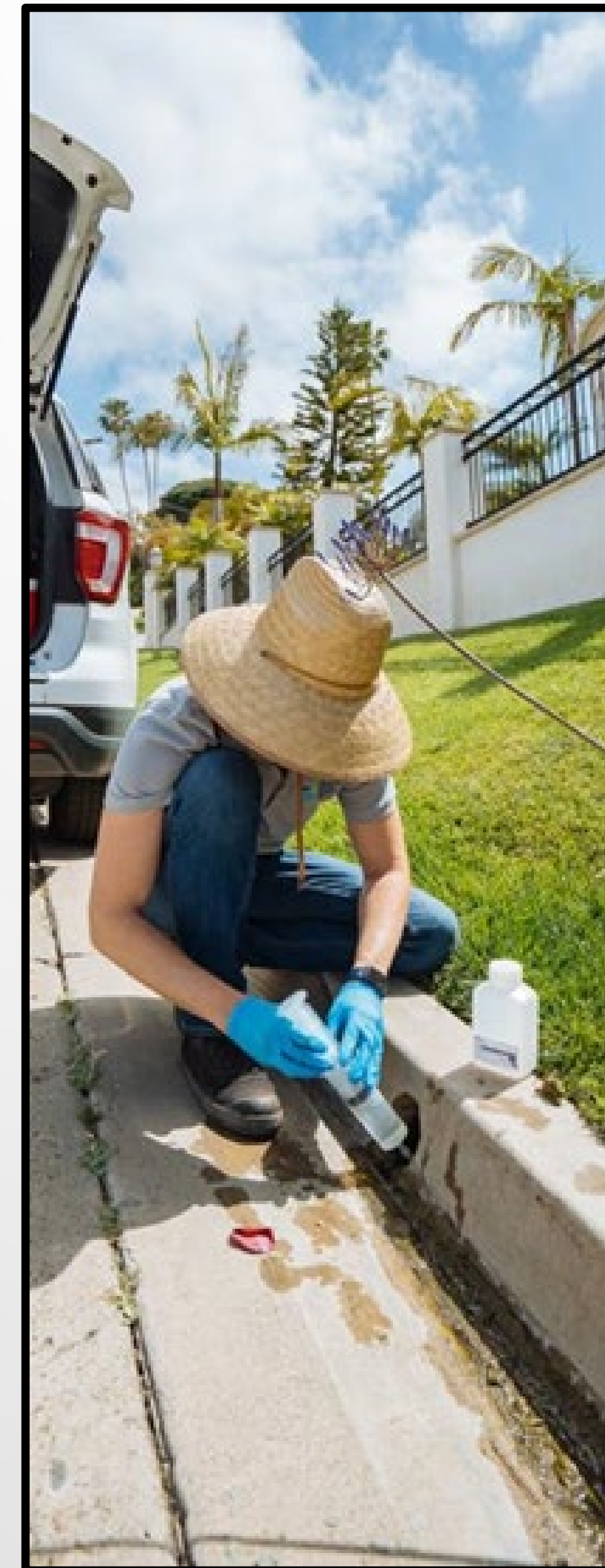
THINK BLUE[®]
SAN DIEGO

Project Community Benefits

Green Space and Habitat Mitigation



Water Quality Improvements



Multi-Purpose Trail



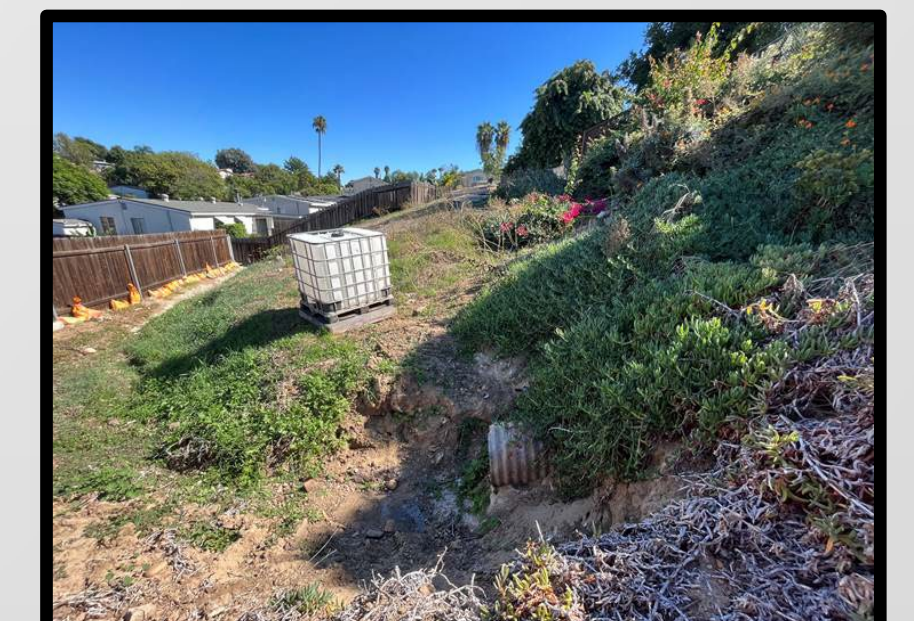
Pedestrian Bridge



Increased Waterway Capacity



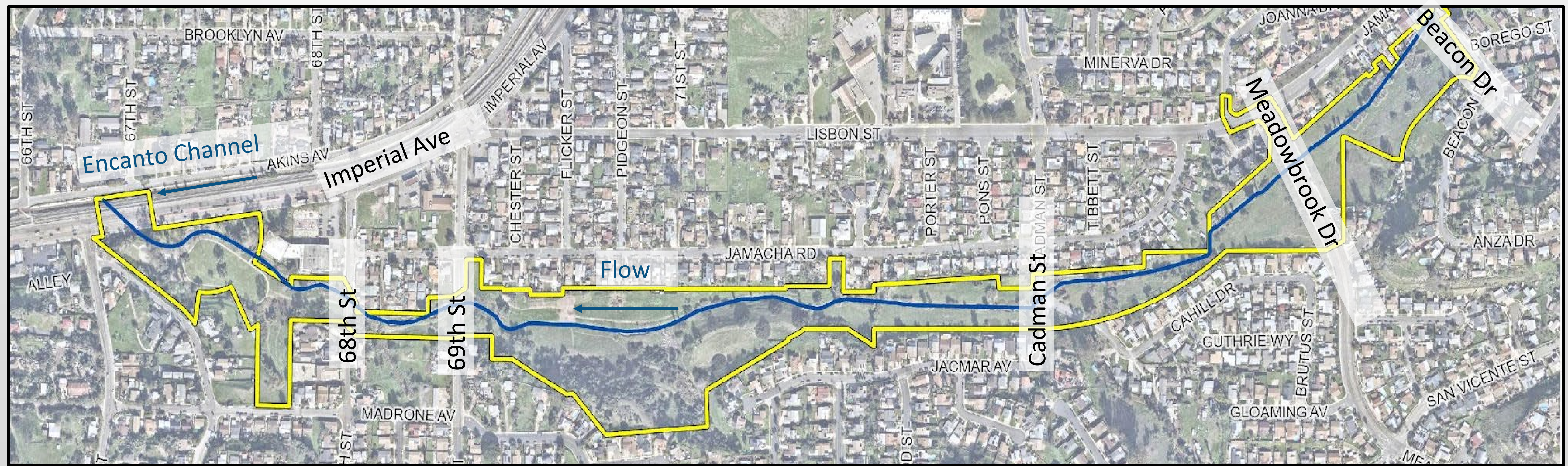
Reduce Flood Risk and Infrastructure Failure





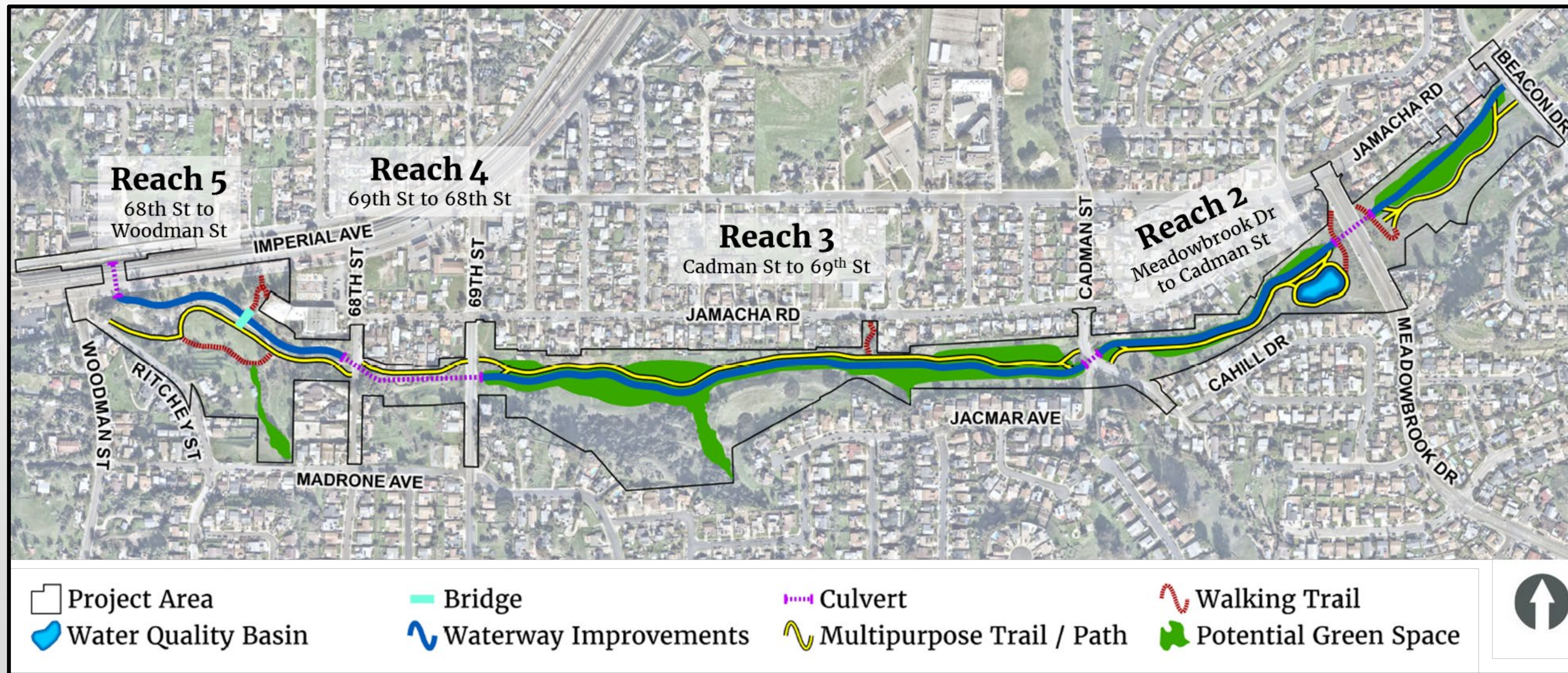
Jamacha Waterway Revitalization Project

Community: Skyline-Paradise Hills
Council District: 4
Watershed Name: San Diego Bay/Chollas



Proposed Improvements

- Channel Capacity Improvements
- Biofiltration basin
- Establish wetland mitigation
- Replace/upsized culverts





El Cerrito & Rolando Park Storm Drain and Green Infrastructure

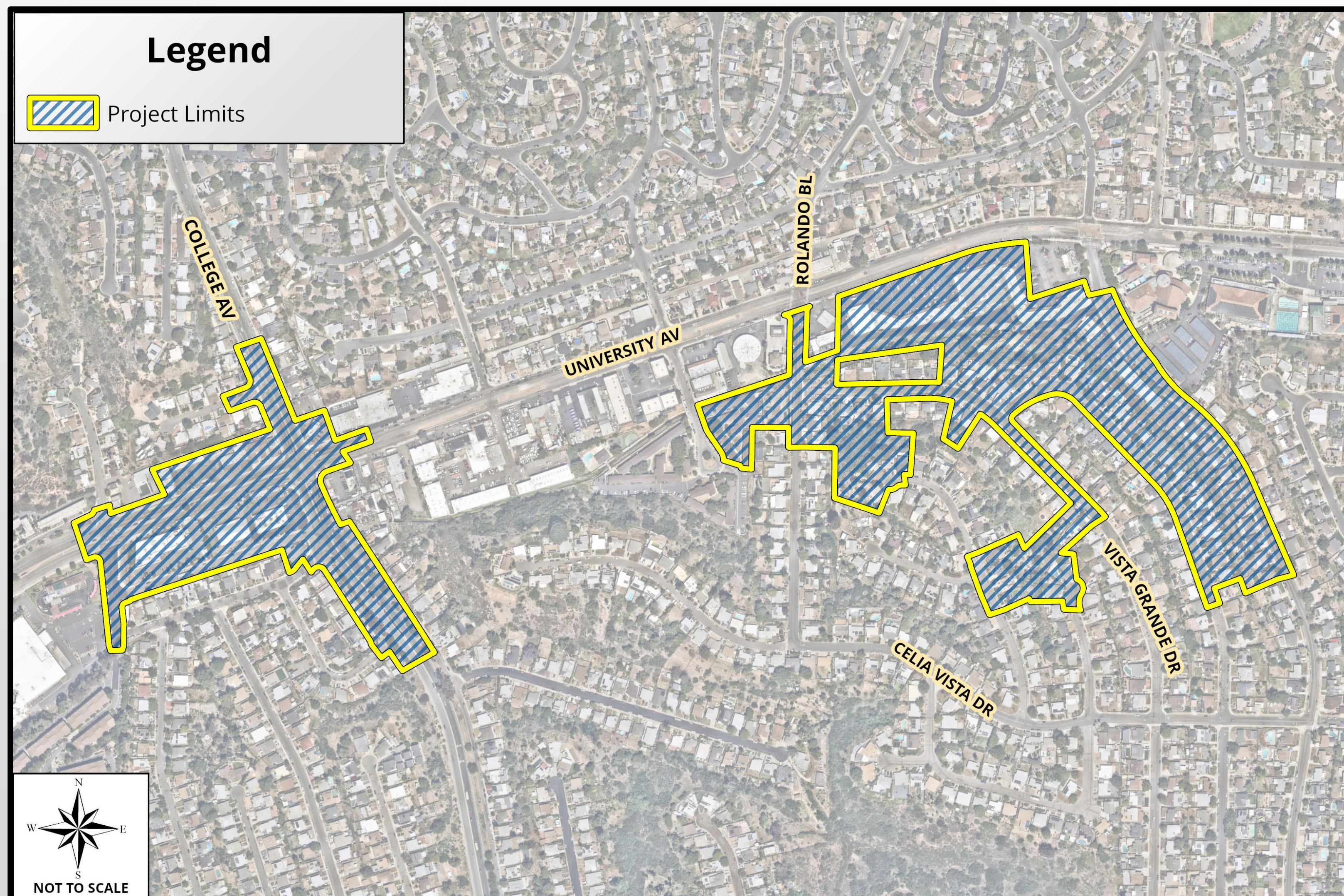
Community: Mid-City: Eastern Area

Council District: 9

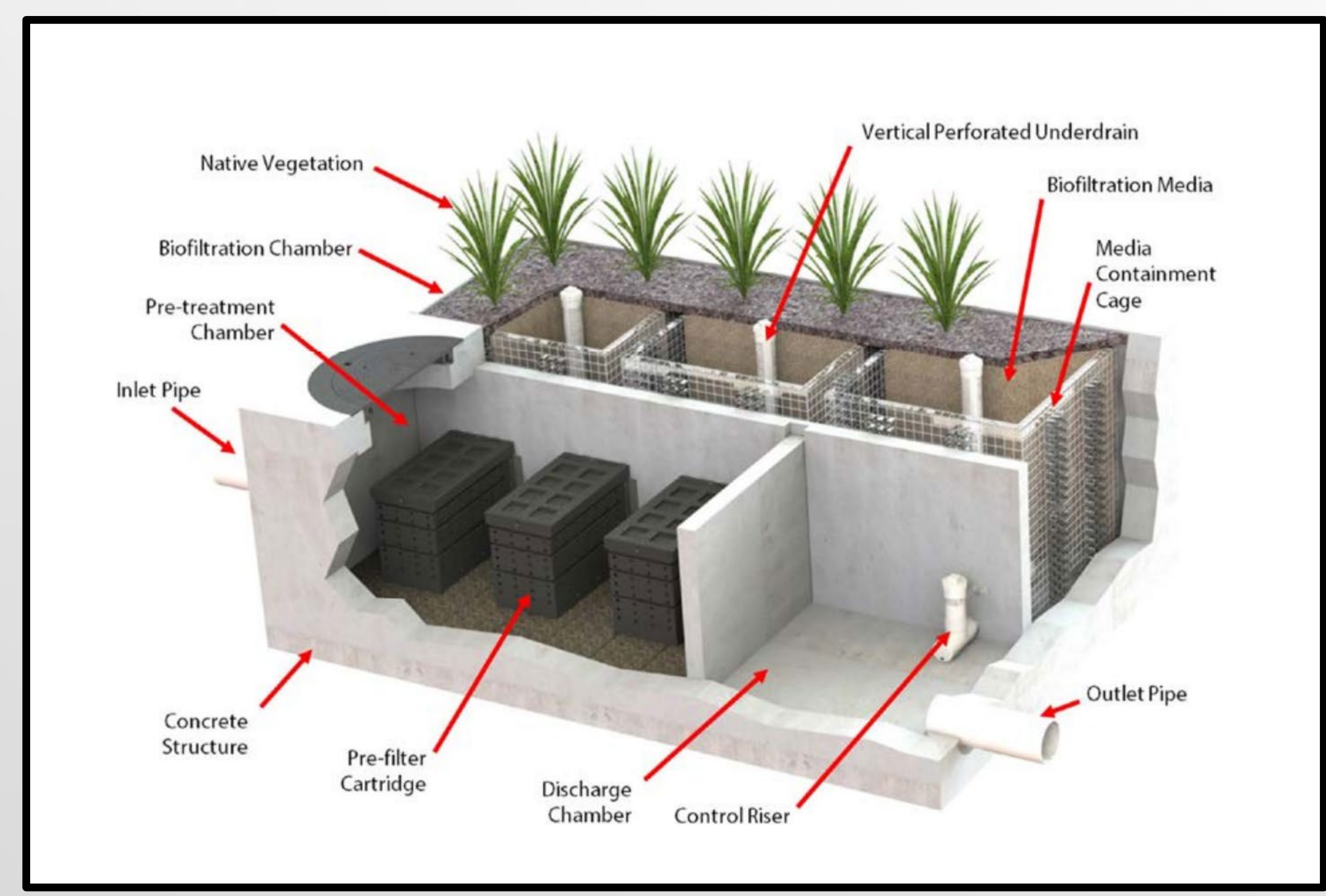
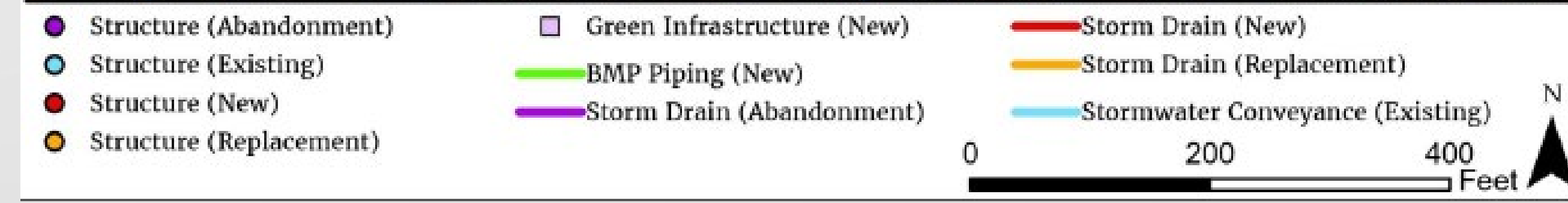
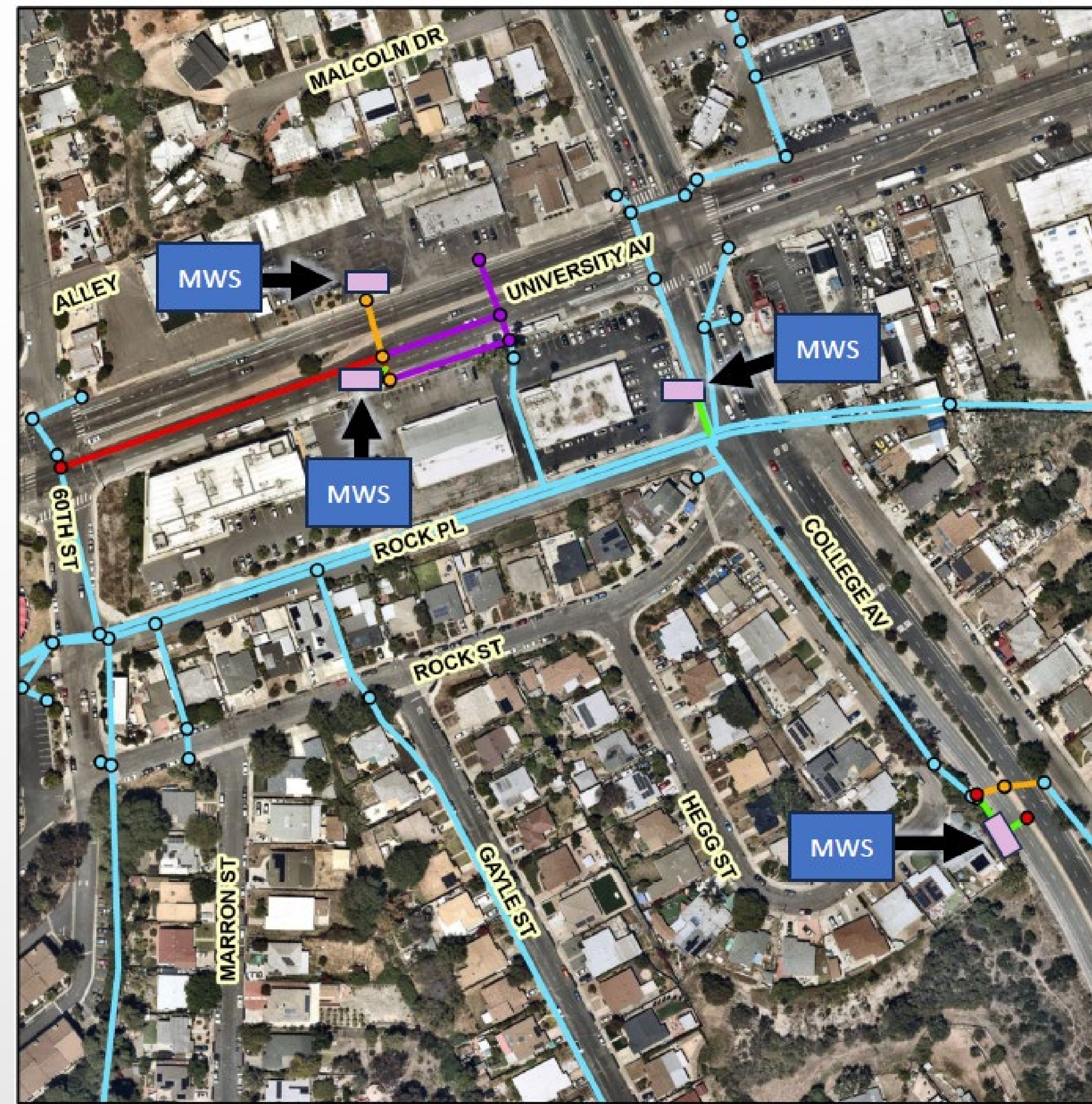
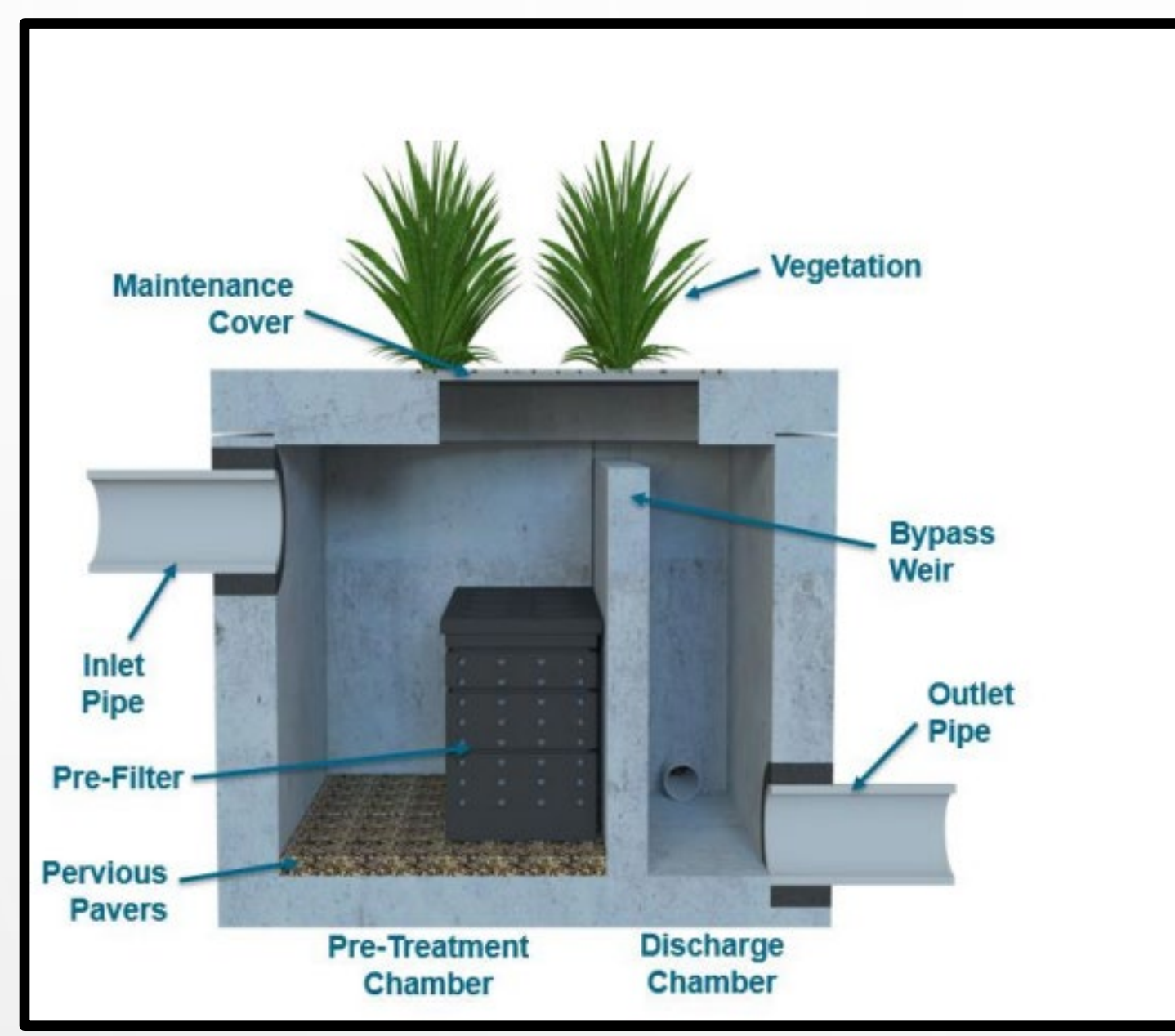
Watershed Name: San Diego Bay/Chollas

Project Goals:

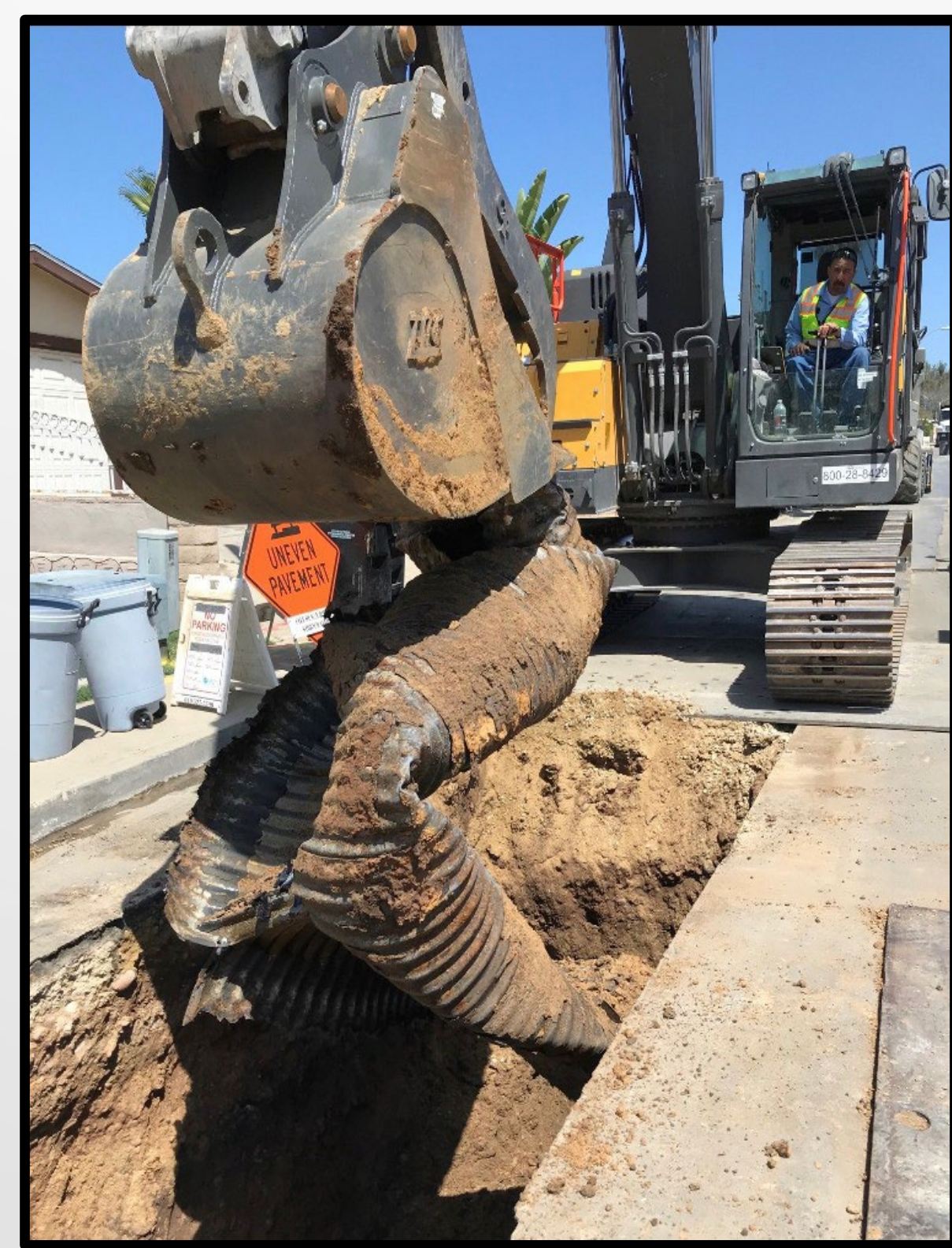
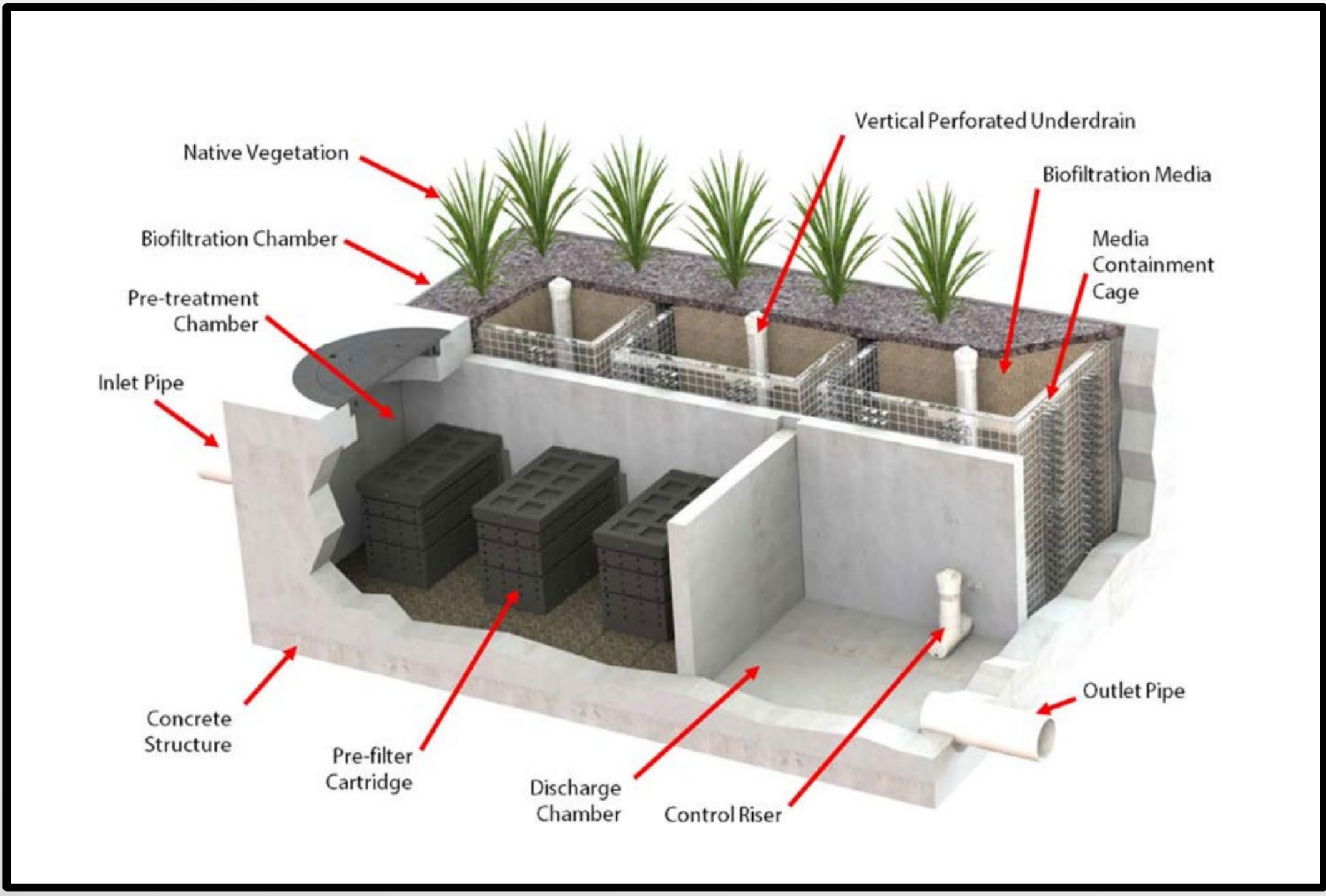
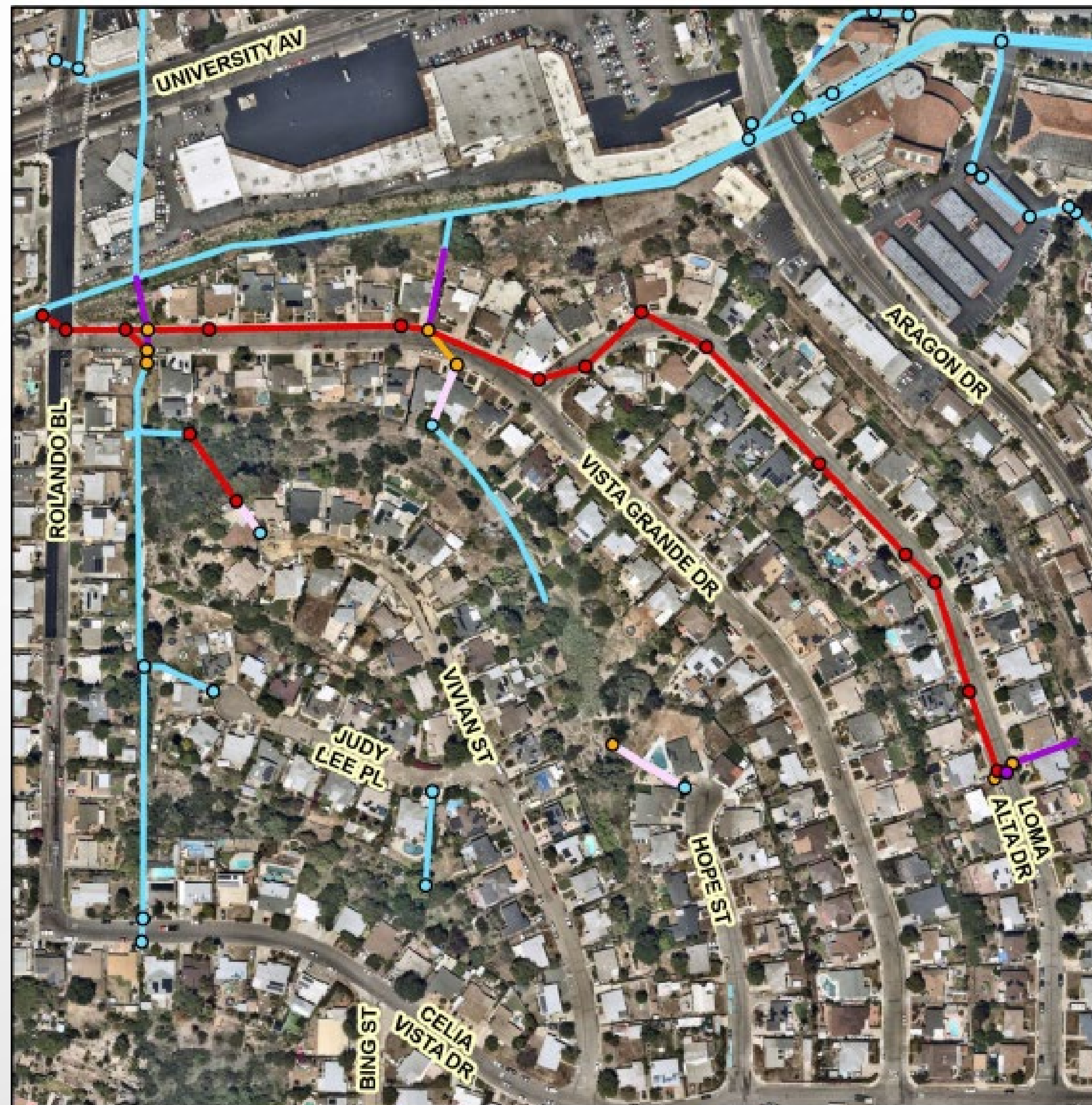
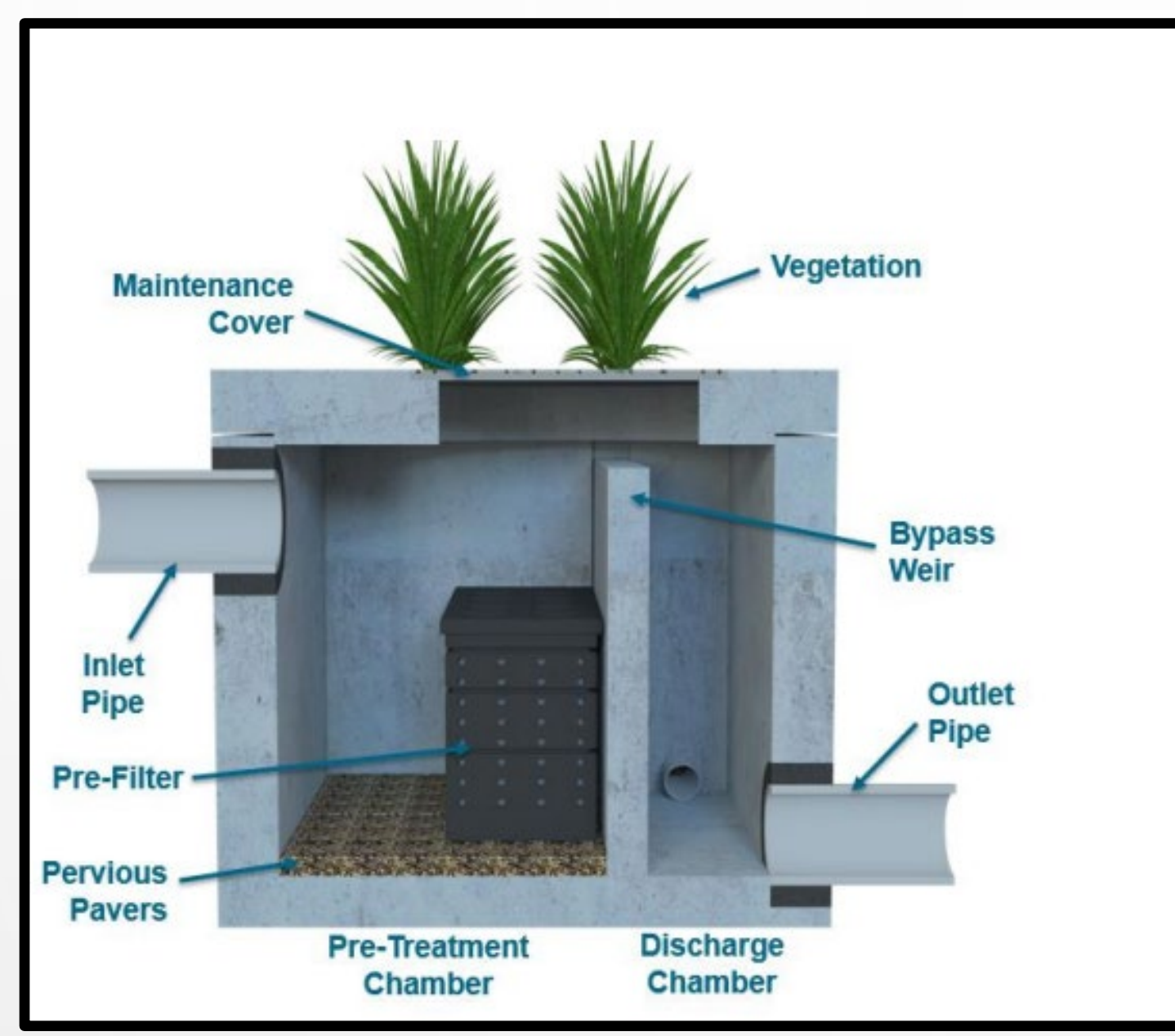
- Upgrade deteriorated Corrugated Metal Pipes
- Improve water quality of Chollas Creek



El Cerrito & Rolando Park Storm Drain and Green Infrastructure (GI)



El Cerrito & Rolando Park Storm Drain and Green Infrastructure (SD)





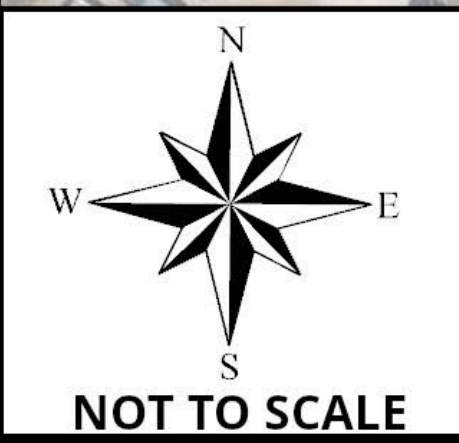
Southcrest Green Infrastructure

Community: Southeastern San Diego

Council District: 8

Watershed Name: San Diego Bay/Chollas

Project Goals: Improve water quality of Chollas Creek



Southcrest Green Infrastructure

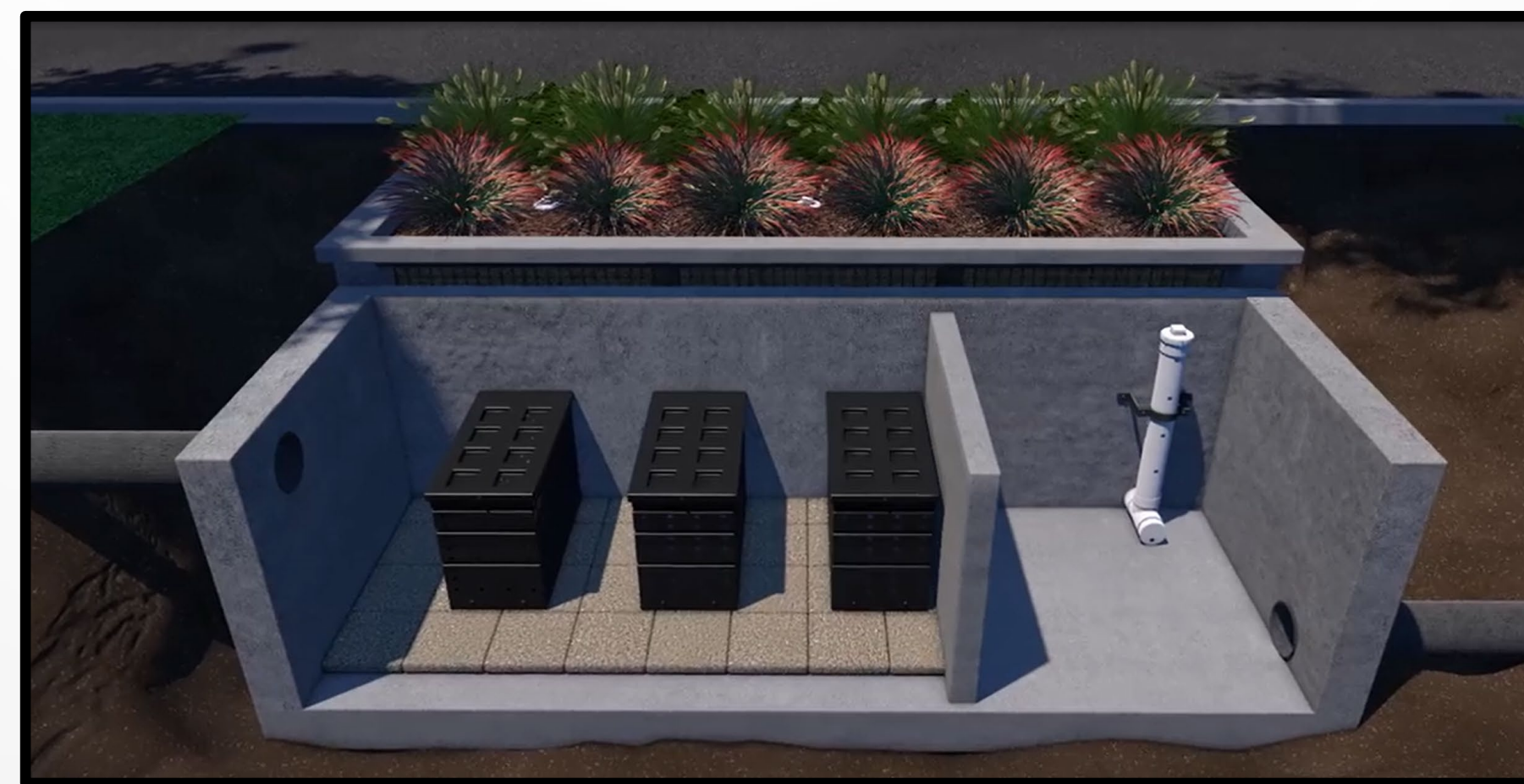
Site 2

Install trench drains to direct flows to Biofiltration Basin



Site 5

Install trench drains to direct flows to two compact Modular Wetland Systems



Site 6

Install Sub-surface concrete vault that drains to one Modular Wetland System





Famosa Slough Slope Restoration

Community: Peninsula Community

Council District: 2

Watershed Name: San Diego River

Project Goals:

- Improve and safeguard water quality
- Stabilize the existing eroding slope between Mentone St. & Montalvo St.
- Restore, enhance, and rehabilitate native habitats





Famosa Slough Slope Restoration

Existing Condition

- Alley and eroding slope between Mentone St and Montalvo St.
- Unimpeded stormwater runoff from top of alley directly into Slough. San Diego River



End of the Alley/Top of Slope

Existing Slope Condition

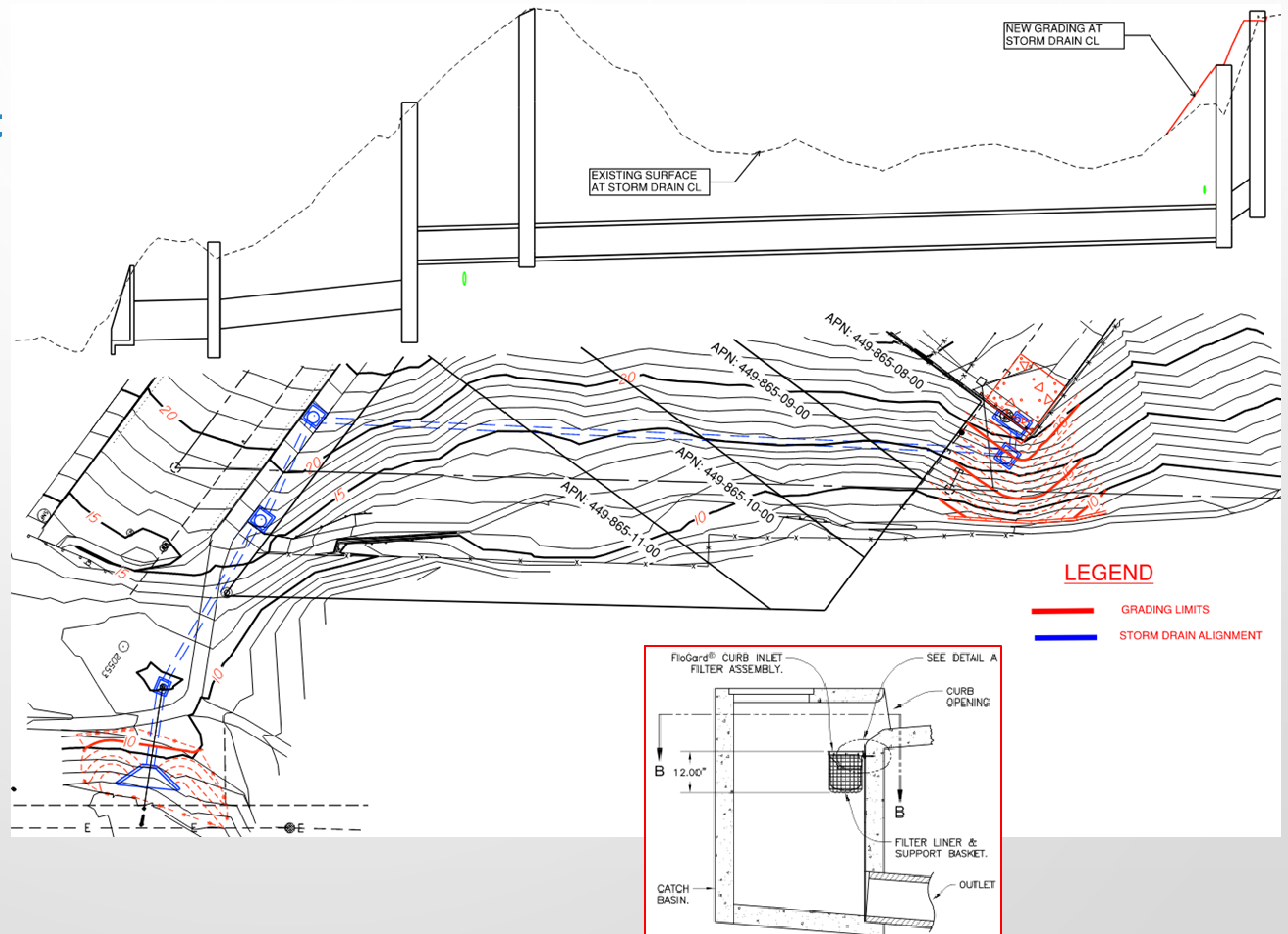
Bottom of Slope and Existing Trail



Famosa Slough Slope Restoration

Current Design

- Restore and stabilize slope
- Installation of an 8' long curb inlet with filter and trash capture insert
- 265 feet of 18" and 24" RCP and associated cleanouts
- Alignment will end and discharge captured runoff at sediment pond 1
- Implement retaining wall to protect exist trail
- Planting of native vegetation



Costal Sage Scrub



Mulefat Scrub



Willow Scrub



Famosa Slough Slope Restoration Community Outreach & Involvement

- **Main stakeholder: Friends of Famosa Slough** a nonprofit organization established to protect and restore the Slough as a natural wetland preserve and promote public awareness of wetlands.
- **Project team coordinated early and throughout the design process**
- **Team was able to implement requests from FFS**
- **Obtained letter of support from FFS and Vote of Concurrence from the Peninsula Community Group (required for Site Development Permit)**



Questions?



THINK BLUE[®]
SAN DIEGO

SUMER HASENIN, PE, MSCE

SYHASENIN@SANDIEGO.GOV

ANTHONY SALVANI, PE

ASALVANI@SANDIEGO.GOV

IMAN HOSSEINI-SHAKIB, PHD, PE

IHOSSEINISHA@SANDIEGO.GOV