


San Diego City Council

PHONE-IN TESTIMONY PERIOD NOW OPEN FOR Item 335: Kearny Mesa Community Plan Update

To call in and make your public comment:

 Dial 619-541-6310

  Enter Access Code 877861 then press #

  Listen and wait until you hear,
"Your phone has been unmuted."

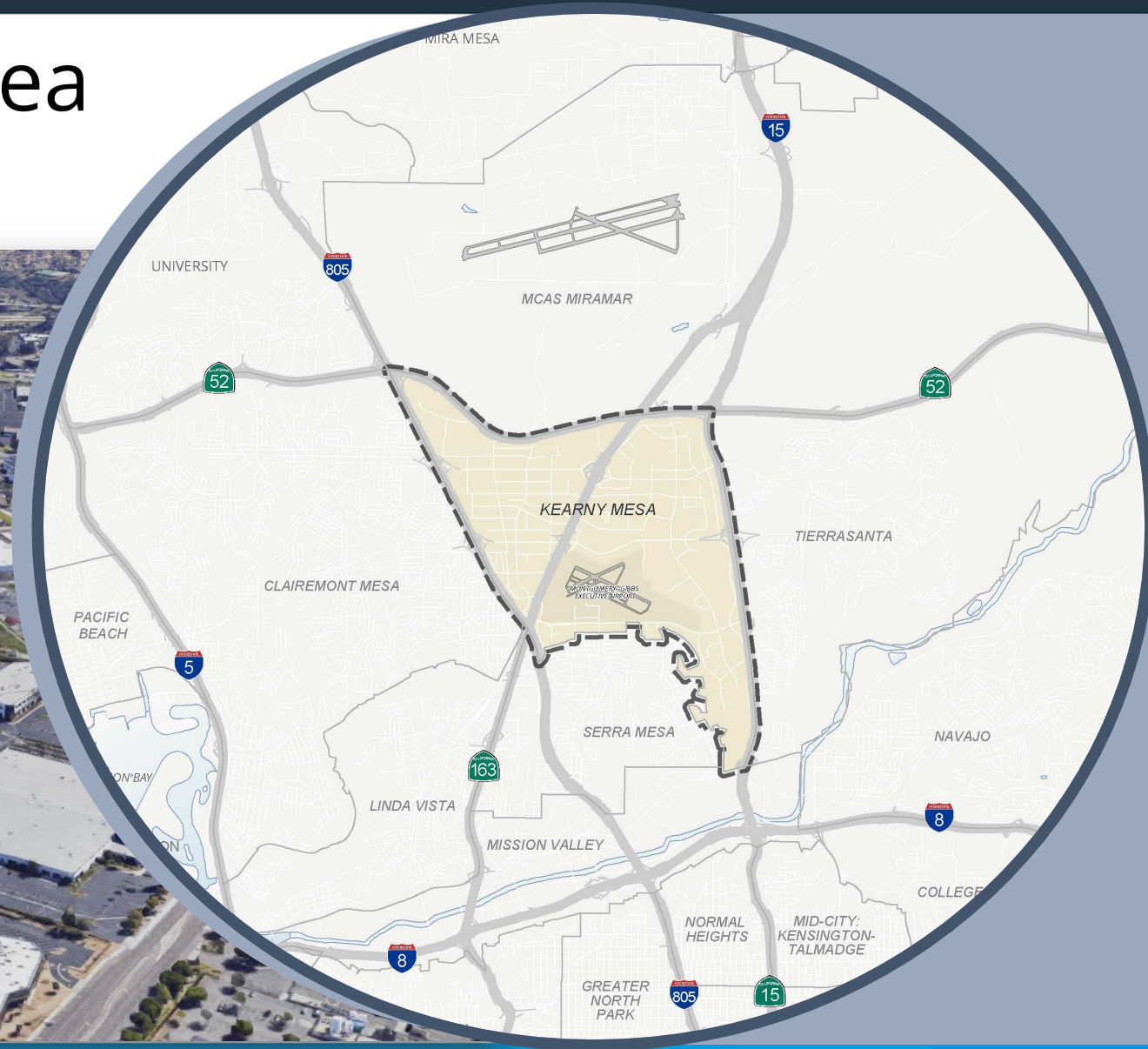
  When it's your turn, state your name and make your comments. When finished, hang up.

Planning Department

ITEM-335: Kearny Mesa Community Plan Update

City Council
November 10, 2020

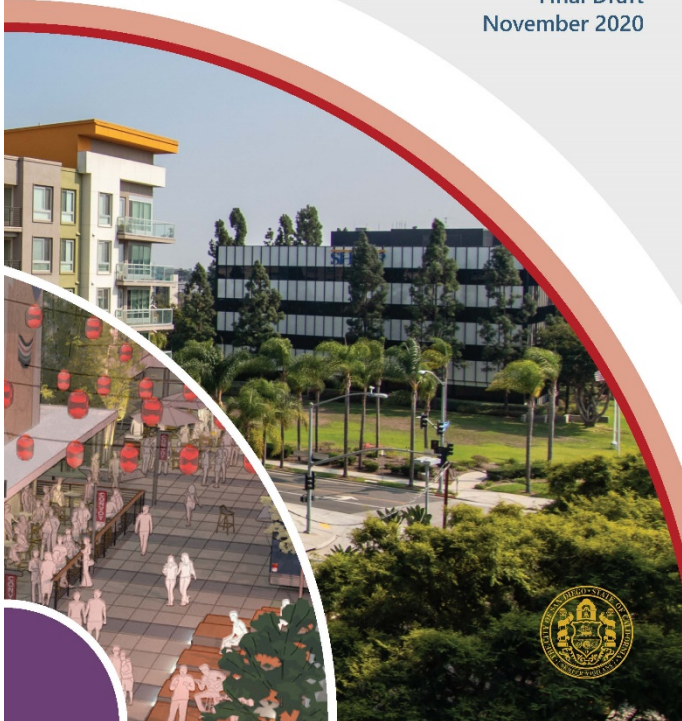
Kearny Mesa Planning Area



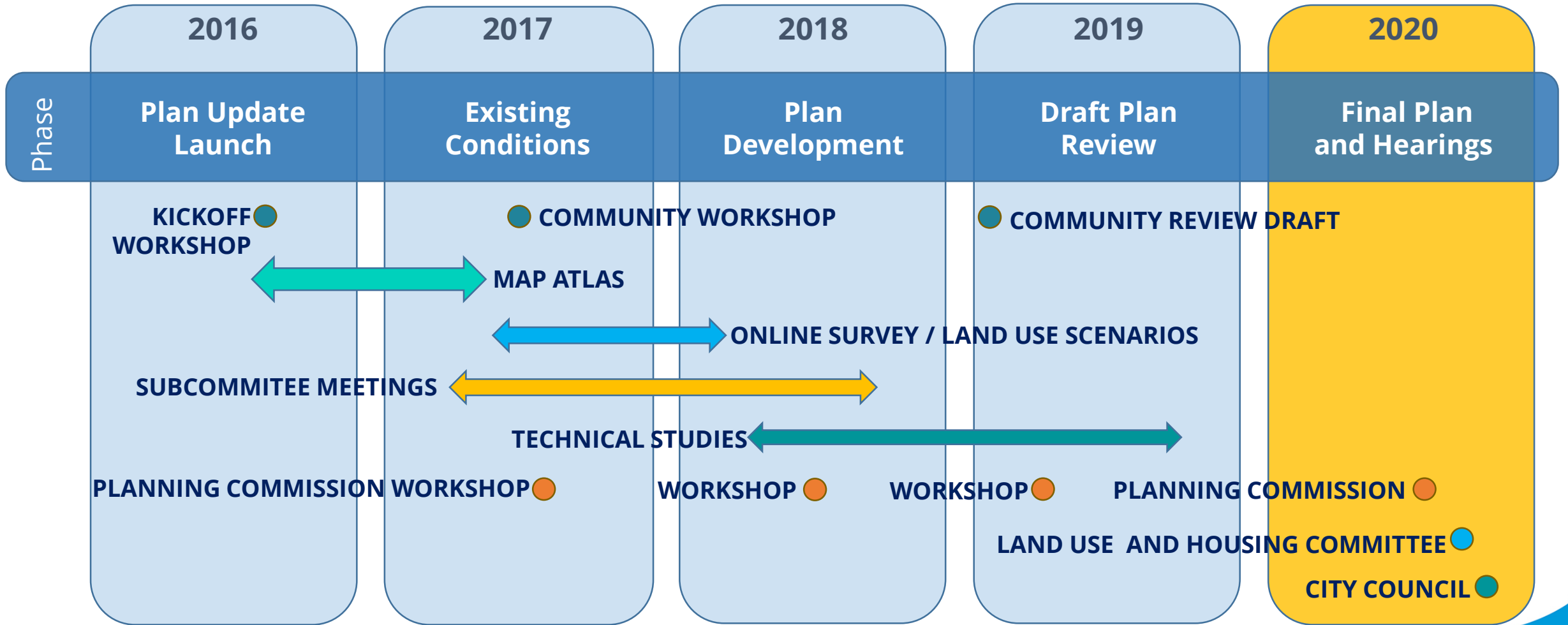
A Vibrant Employment Community

KEARNY MESA COMMUNITY PLAN

Final Draft
November 2020



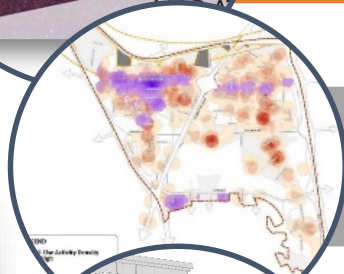
Community Plan Update Timeline



Community Outreach



Existing Conditions & Opportunities



Land Use Options



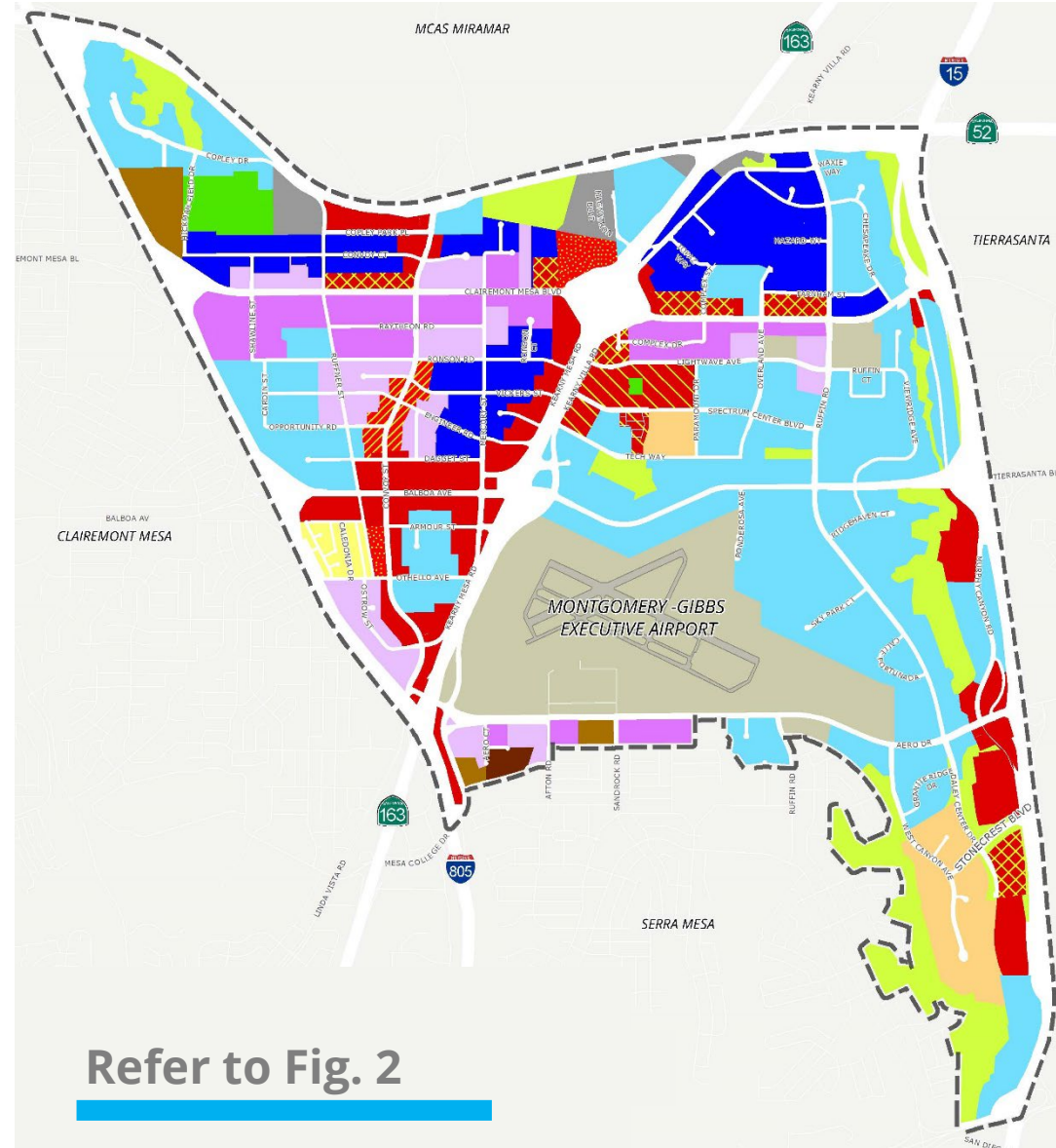
Community Review Draft



Hearing Process

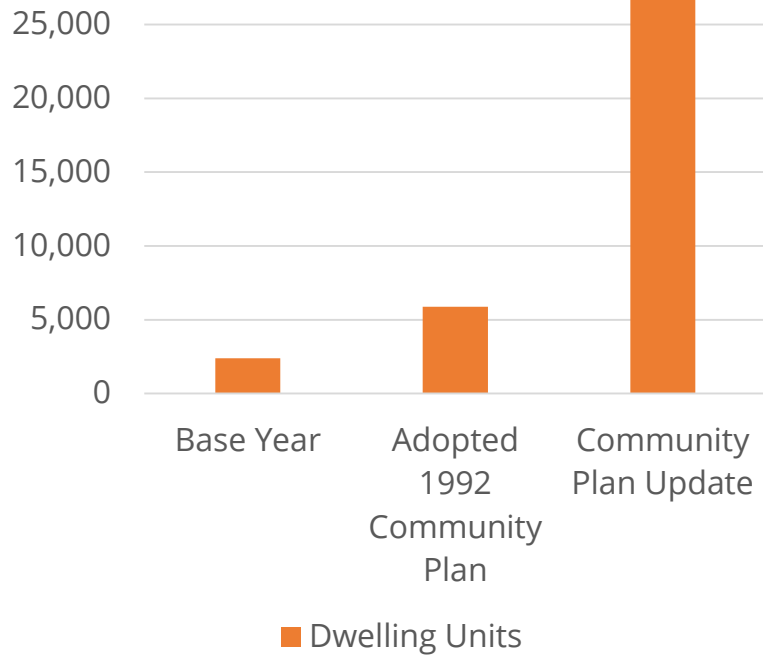
Planned Land Use

- Ruffin Technology Cluster
- Clairemont Mesa Corridor Village
- Convoy Corridor Village
- Aero Drive Village



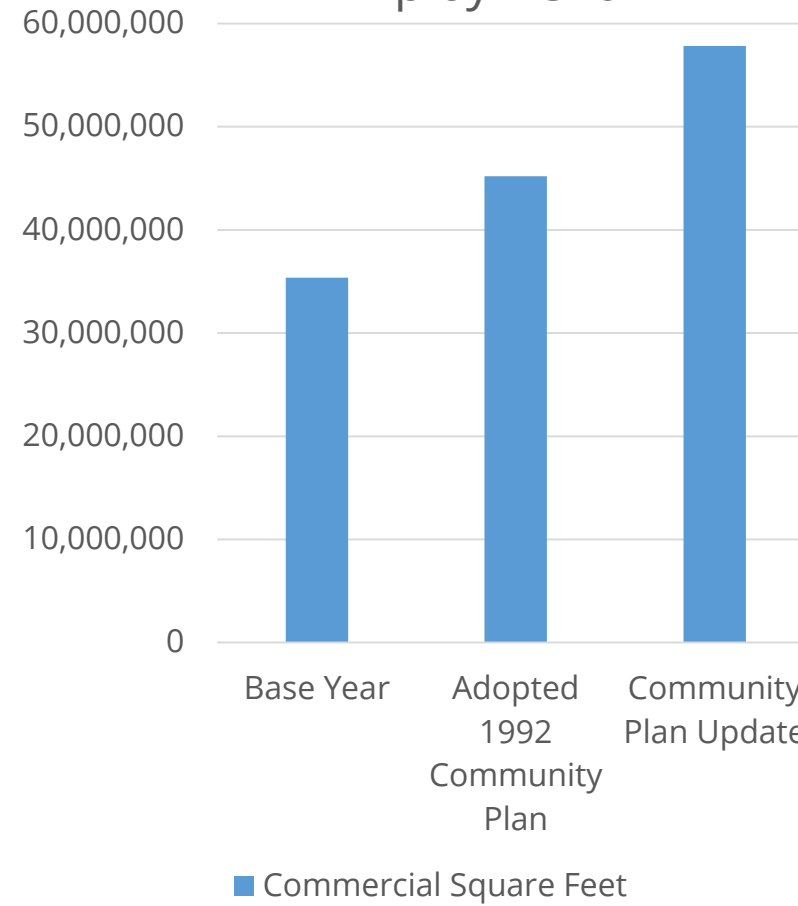
Jobs-Housing Balance

Residential



✓ Majority of new residential located in Transit Priority Areas (TPA)

Employment



✓ More than 25% increase in non-residential building capacity over Adopted Plan

Establish Live/Work/Play Village Areas



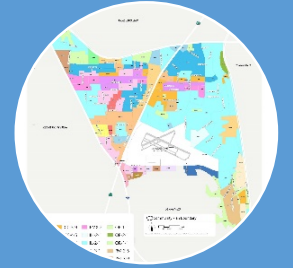
Urban pathways



Pedestrian-oriented environment



Park guidelines



Area specific buffers



Spotlight on: Convoy Corridor



Convoy Pan Asian Cultural and Business Innovation District

Parks, Recreation, and Open Space

A parks and open space network that combines the best qualities of urban and natural spaces, connects community assets, and encourages people to engage with their surrounding community and environment.



Park
Inventory

Public Input
and
Engagement

Park Needs
for
Population

Opportunity
Sites

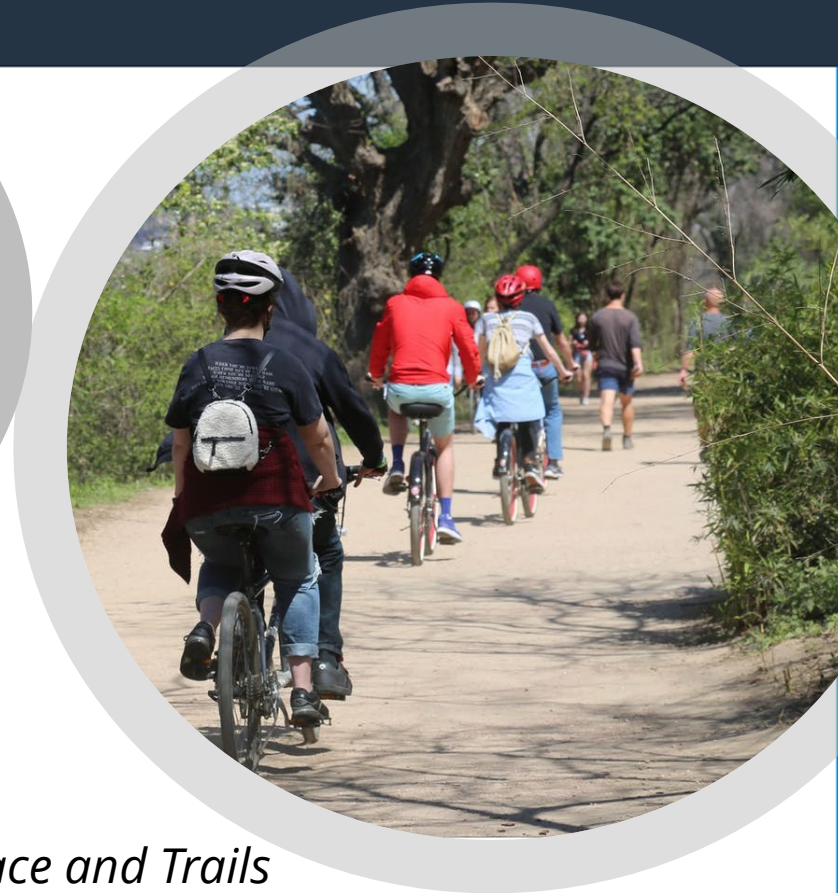
Parks and Recreation System



Centrum Jogging Trail

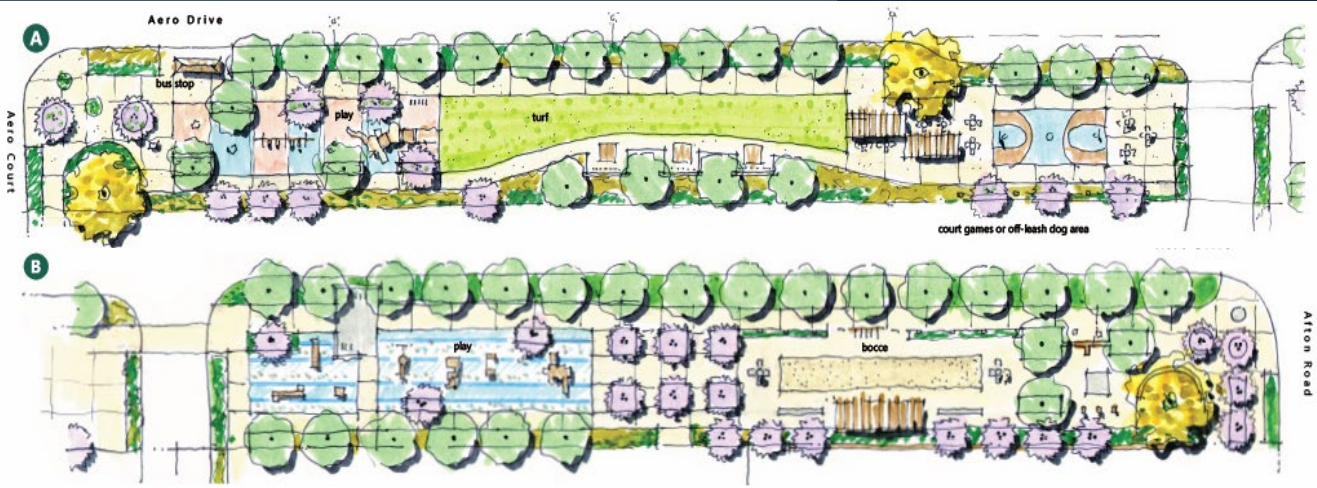


Hickman Field



Open Space and Trails

Planned Facilities	Parks	Recreation Center	Aquatic Complex
Figure 28 and Table 8	852 planned value points + 17 other = 869 points	42,225 square feet in 2 recreation centers	2 aquatic complexes planned



Recreation

- Hickman Field GDP [approved]
- New recreation facilities within developments in the Convoy and Clairemont Mesa Corridors

Parks and Trails

- Aero Promenade linear park
- Aero Park
- Connections to Clairemont with Othello Bridge Park and improvements to Kearny Mesa Community Park
- Murphy Canyon Bike Path/Trailhead



Robust Reliable Mobility



Improve Transit and Modernize Mobility



Base Year vs. Community Plan Update	Change in Average Commute Trip Length
Citywide	5.3-mile reduction
Community	4.7-mile reduction



City Target: Reduce average vehicle commute distance by 2 miles

Citywide Commute Mode Share

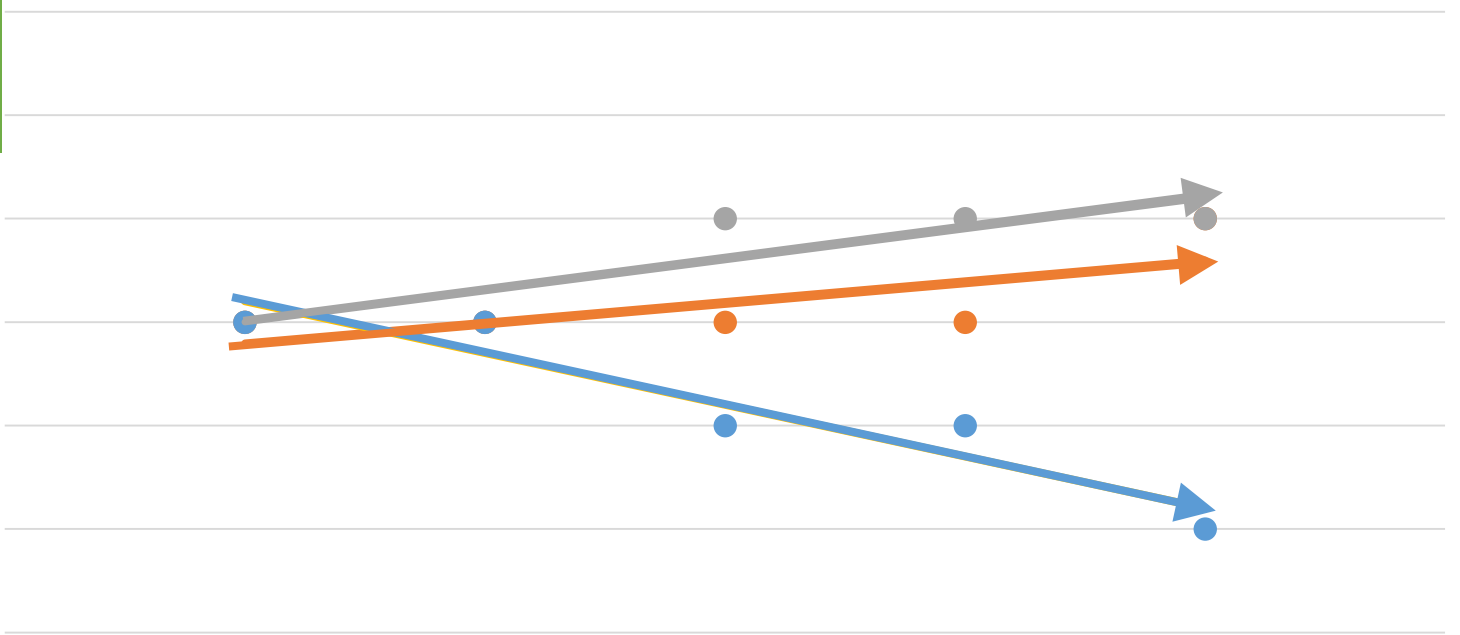
Shifting the commuter mode share closer to achieving CAP targets in TPAs

Active Transportation % ↑

Transit % ↑

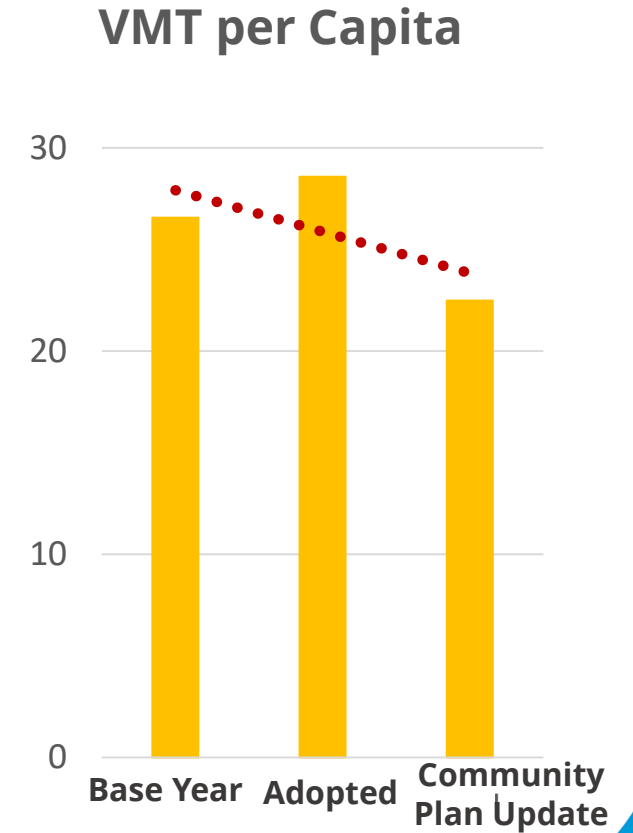
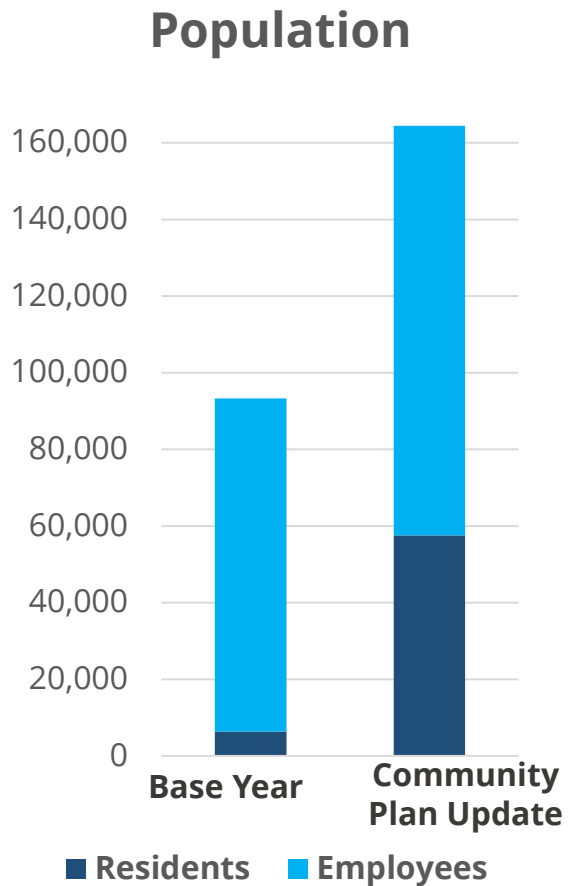
Vehicle % ↓

Active Transportation Transit Vehicle



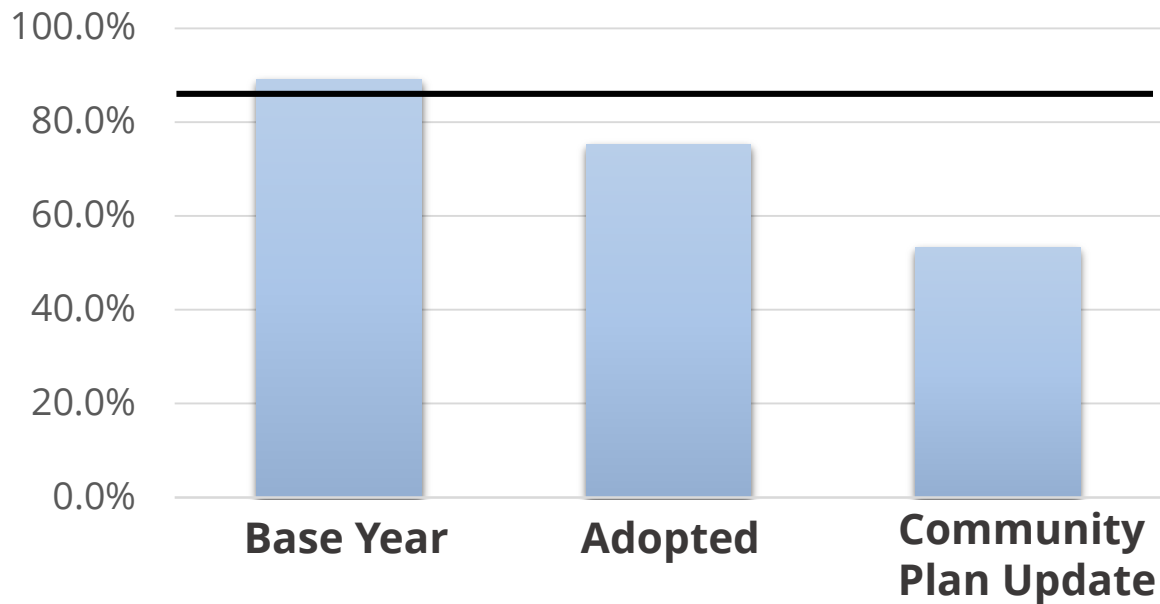
1: 2035 Base w/ Adopted Community Plan Updates 2: Midway & Old Town Community Plan Updates 3: TPA Parking Regulations for Multi-Family Residential 4: Balboa and Morena Specific Plans & Mission Valley Community Plan Update 5: Kearny Mesa Community Plan Update

Kearny Mesa Vehicle Miles Traveled (VMT)

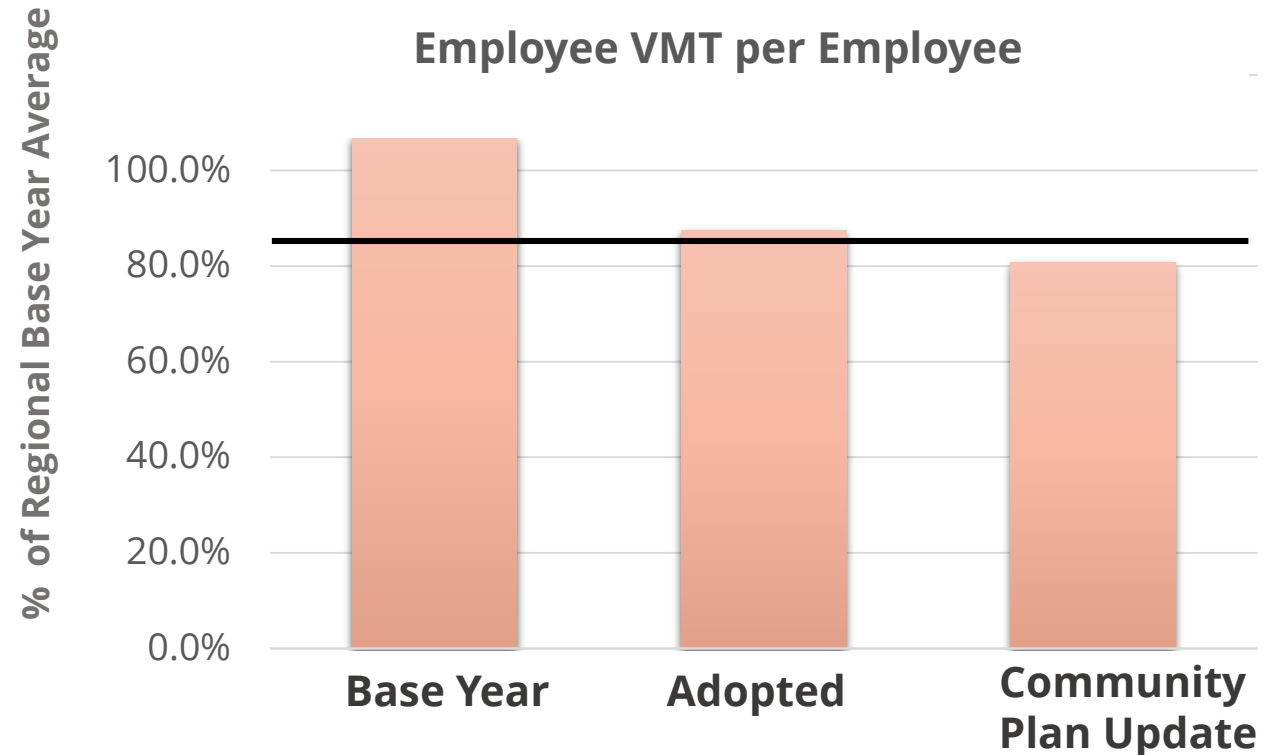


Kearny Mesa VMT Efficiency Metrics

Resident VMT per Capita

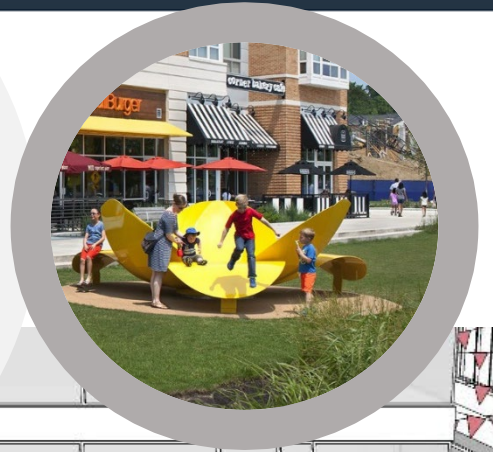


Employee VMT per Employee



— 85% Threshold

Create a Connected Community



Recommendations

- **Kearny Mesa Community Planning Group** voted 11-2-0 to support the Kearny Mesa Community Plan Update
- **Mobility Board** voted 9-1-0 to support the Kearny Mesa Community Plan Update
- **Park and Recreation Board** voted 6-1-0 to support the Parks, Recreation, and Open Space section of the Kearny Mesa Community Plan Update
- **Historical Resources Board** voted 9-0-0 on consent to recommend the Kearny Mesa Cultural Resources Constraints Analysis, Historic Context Statement, the Historic Preservation section of the Kearny Mesa Community Plan, and the Program Environmental Impact Report related to Cultural/Historical Resources
- The **Planning Commission** voted 5-0-2 to recommend the Kearny Mesa Community Plan Update and look into the preparation of a site specific plan for the Convoy area at a later date.
- The **Land Use and Housing Committee** voted 4-0-0 to recommend approval of staff's proposed actions


Recommendation to the City Council

- **CERTIFICATION** of Program Environmental Impact Report No. 607857/Sch. No. 2018111024
- **APPROVAL** of a resolution adopting the Kearny Mesa Community Plan and amending the General Plan
- **APPROVAL** of resolution repealing the StoneCrest Specific Plan
- **APPROVAL** of an ordinance amending the Land Development Code Chapter 13, Article 1, Division 5; Chapter 13, Article 1, Division 6; and Chapter 13, Article 2, Division 14 and amending the City's certified Local Coastal Program
- **APPROVAL** of an ordinance rezoning land within the Kearny Mesa Community Planning Area consistent with the Kearny Mesa Community Plan

San Diego City Council

PHONE-IN TESTIMONY PERIOD NOW OPEN FOR Item 335: Kearny Mesa Community Plan Update

To call in and make your public comment:

 Dial 619-541-6310

  Enter Access Code 877861 then press #

  Listen and wait until you hear,
"Your phone has been unmuted."

  When it's your turn, state your name and make your comments. When finished, hang up.