

KEARNY MESA COMMUNITY PLAN UPDATE

Lisa Lind
Senior Planner

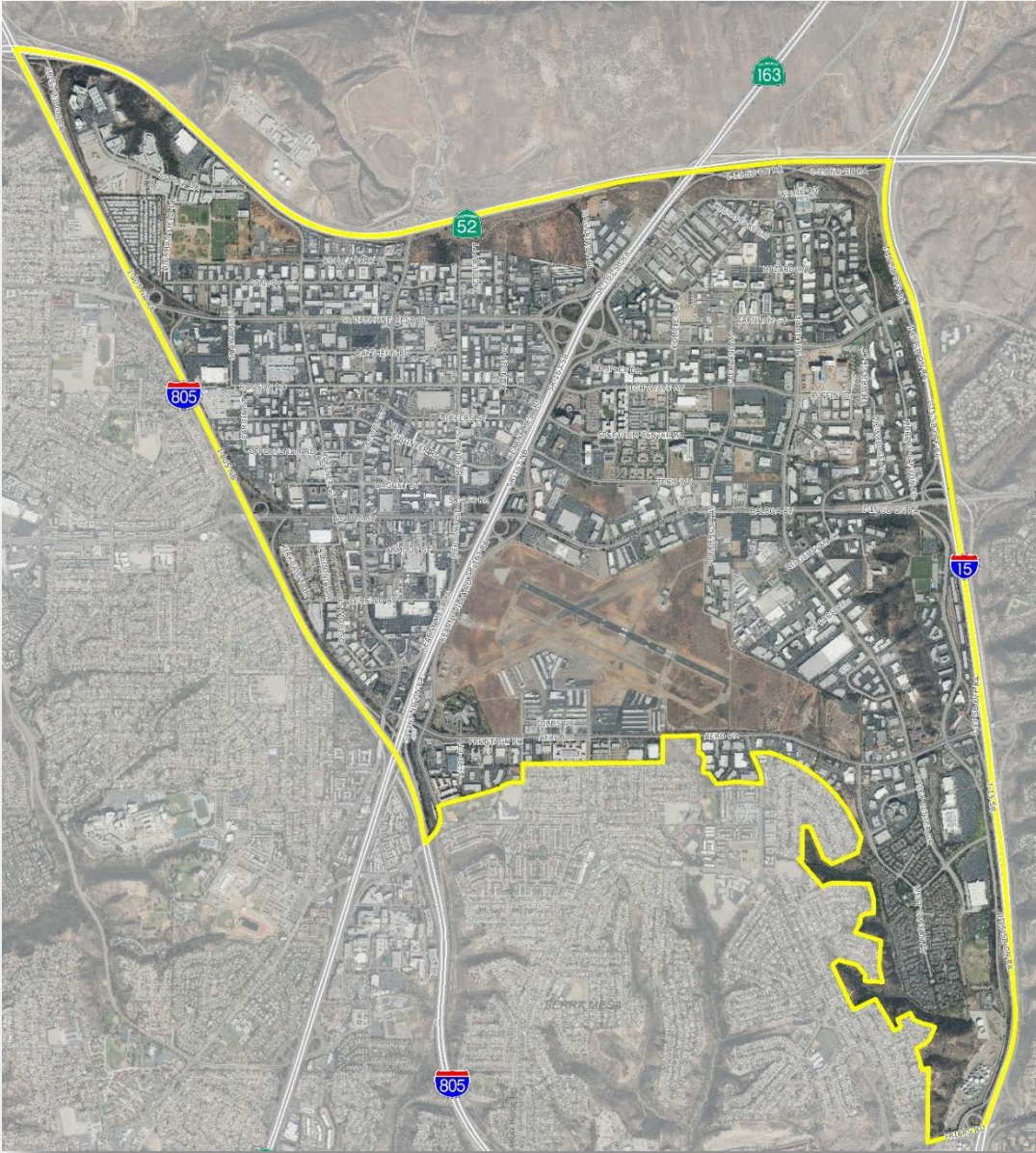
Planning Commission
August 3, 2017



KEARNY MESA
CONNECTED

Background

Planning Area



Background

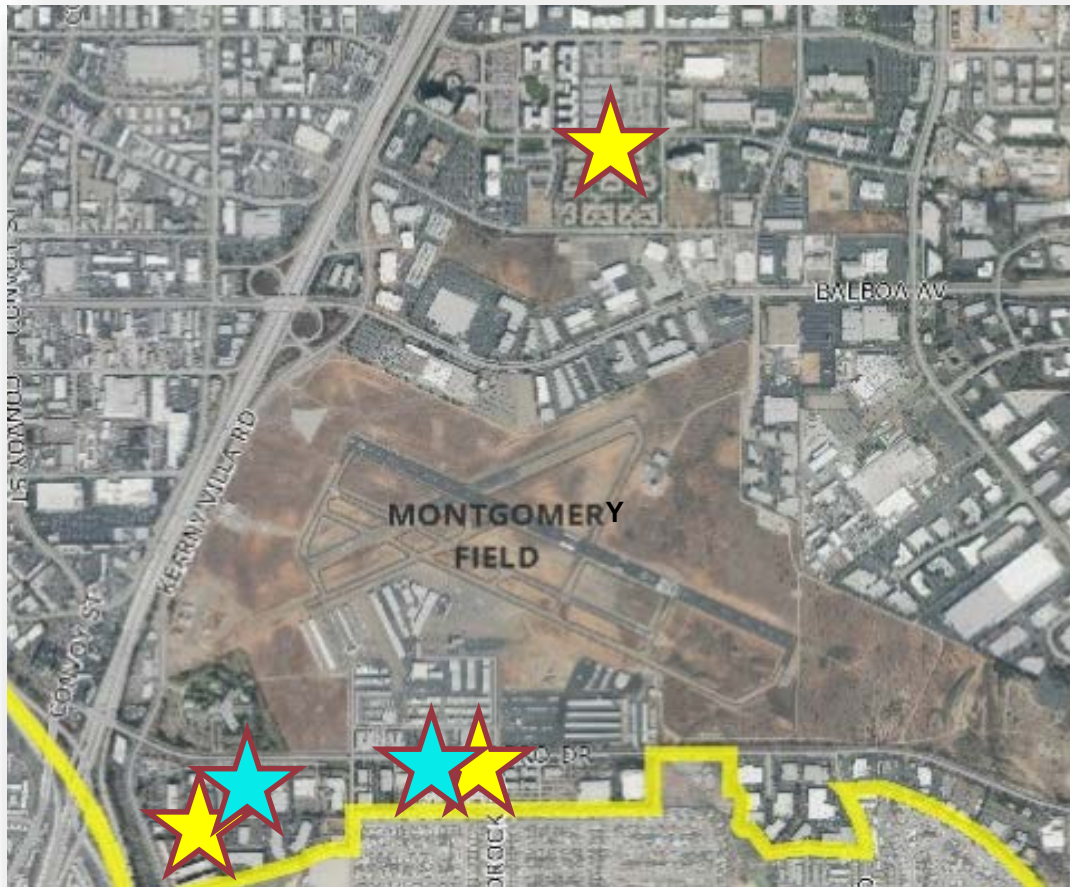
Kearny Mesa Community Plan Update Purpose

- Address General Plan and Climate Action Plan policies
- Reinforce Kearny Mesa as an employment center
- Improve multi-modal connections
- Promote Convoy Street corridor as a walkable destination



Background

Community Plan Amendments



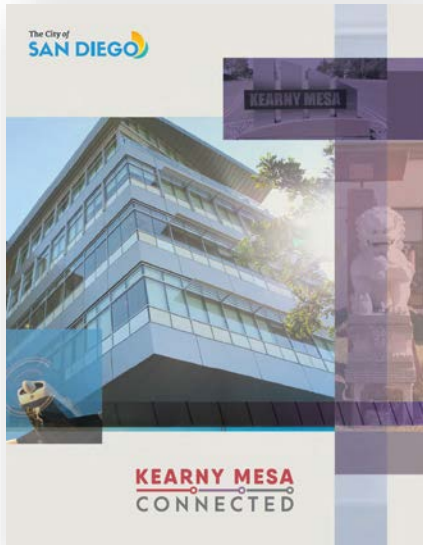
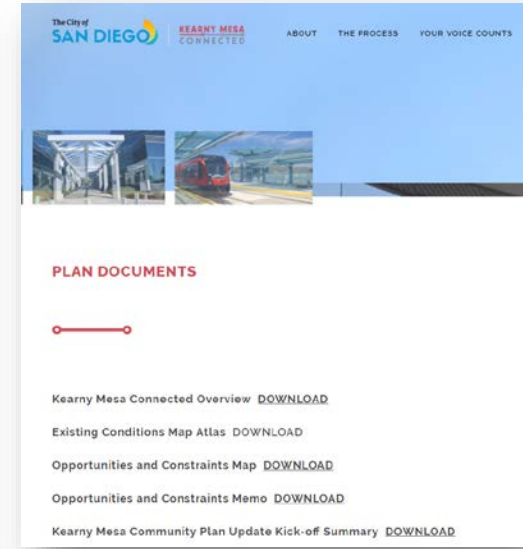
Background

Existing Conditions



Existing Conditions

Kearny Mesa Connected Website



WHAT IS A COMMUNITY PLAN?

It provides community-specific, tailored policies and a long-range physical development guide for City staff, decision-makers, property owners, and citizens engaged in community development.

It identifies a vision and strategies to support community character and establishes goals and policies to address land use, mobility, urban design, and public facilities. A component of the City of San Diego's General Plan, it is a long-term blueprint for the future and provides location-based policies and recommendations.

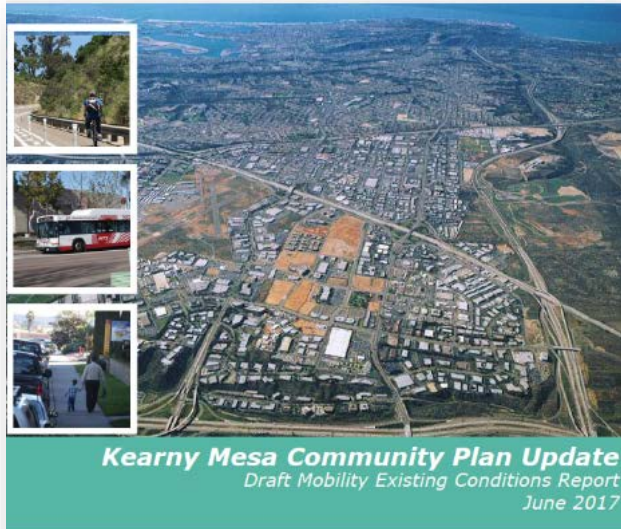
WHY DO WE NEED A COMMUNITY PLAN UPDATE?

- 1 POPULATION AND DEMOGRAPHICS ARE CHANGING**
Accommodating and strengthening the industrial and business opportunities with considerate integration of housing choices will help meet the needs of the community.
- 2 PROTECTS OUR QUALITY OF LIFE**
Planning for future housing and businesses helps avoid the negative consequences of unbridled growth and ensures it will provide community benefits.
- 3 FINANCING NECESSARY INFRASTRUCTURE**
Addresses future infrastructure demand and ensures it meets community needs.
- 4 ADDRESSES CLIMATE CHANGE**
Identifies improvements to safe and accessible travel for bicycling, pedestrians, transit users, and vehicles while reducing impacts on the environment.



Existing Conditions

Plan Documents



Prepared for
The City of
SAN DIEGO
1010 Second Avenue, Suite 1200 San
Diego, CA 92101

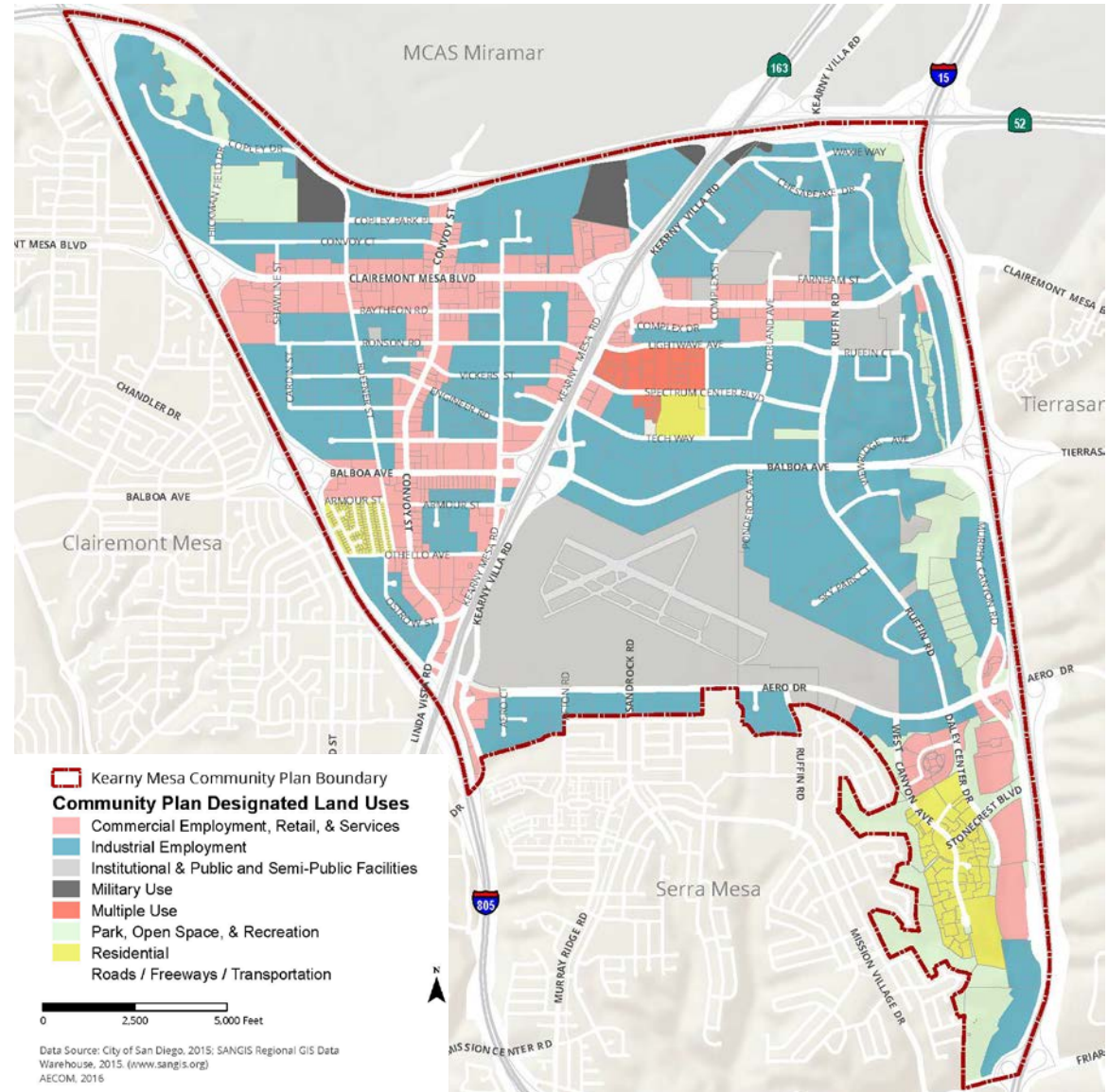
KEARNY MESA
CONNECTED



Existing Conditions

Community Plan Land Use

Designated Land Use	Acres	Percent of Land Area
Industrial and Business Park	1,900	53%
Government/Public Facilities	632	17%
General Commercial	473	13%
Specific Plan Area	318	9%
Park and Recreation	165	5%
Mixed Use	60	2%
Residential	41	1%
Utility	19	<1%
Total	3,608	100%



Existing Conditions

Montgomery Field

KEARNY MESA
CONNECTED

SDAirportPlans.com

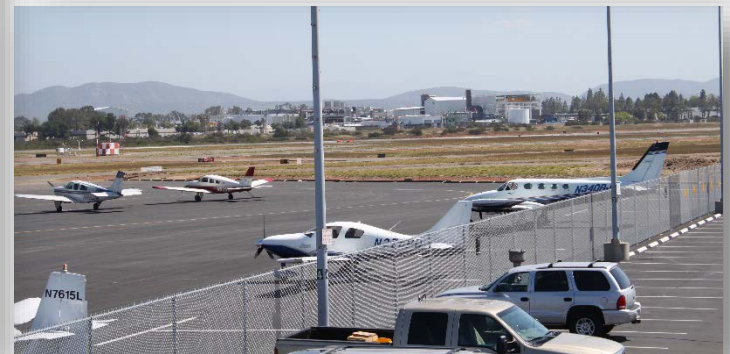


SD Airports | MONTGOMERY-GIBBS EXECUTIVE AND BROWN FIELD MUNICIPAL AIRPORTS
AIRPORT MASTER PLANS

A white and blue Cessna-style airplane with the registration N68EA is parked on a runway. A large, stylized arrow graphic, colored orange and white, curves from the bottom left towards the top right, passing behind the airplane.

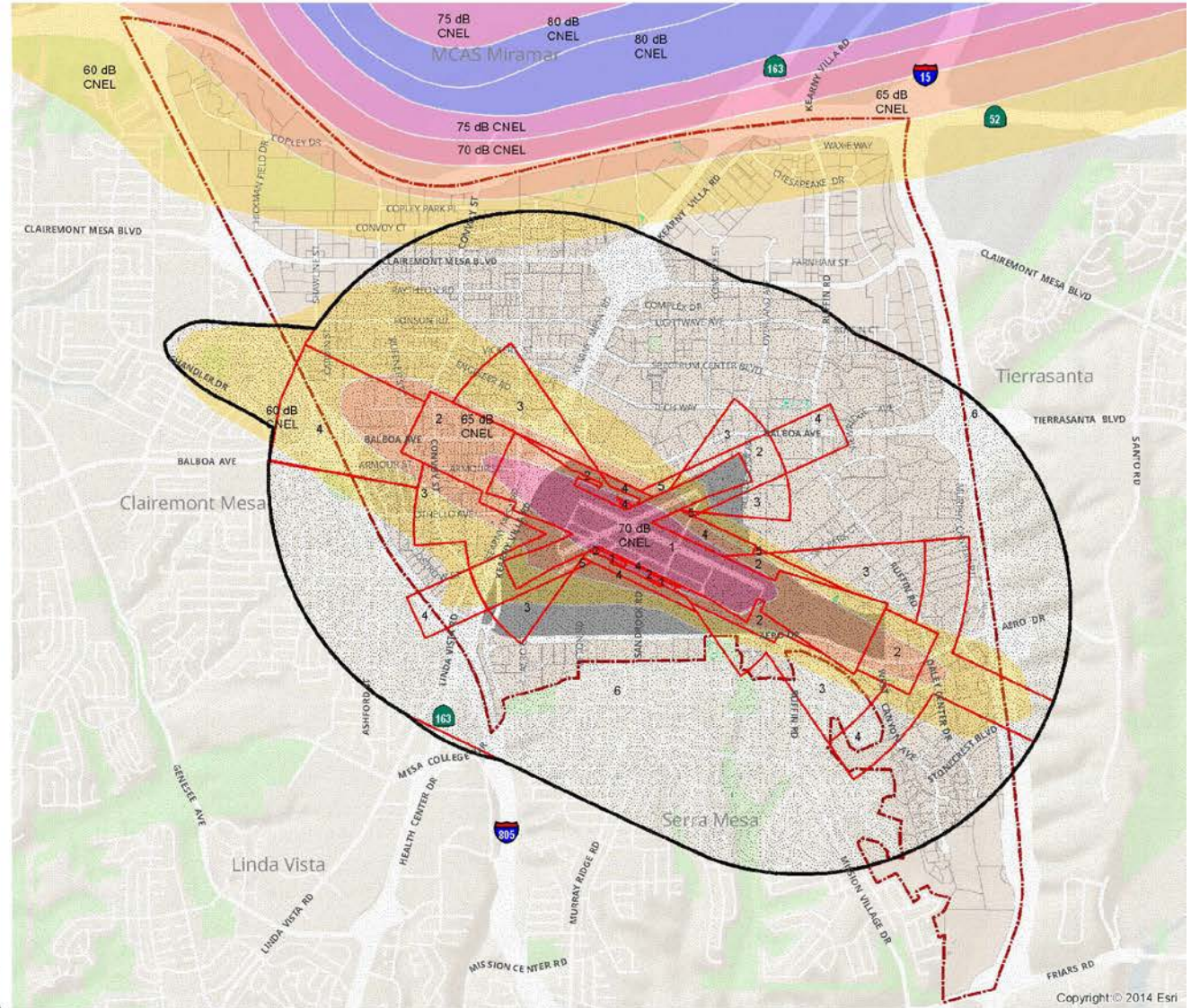
[HOME](#) [THE AIRPORTS](#) [ABOUT THE PROJECT](#) [GET INVOLVED](#) [DOCUMENTS](#) [SCHEDULE](#) [CONTACT US](#)

AIRPORT MASTER PLANS



Existing Conditions

Airport Influence Area



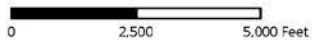
- Kearny Mesa Community Plan Boundary
- Montgomery-Gibbs Executive Airport
- Airport influence Area
- Airport Field Safety Zones

ZONENAME

- 60 dB CNEL
- 65 dB CNEL
- 70 dB CNEL
- 75 dB CNEL
- 80 dB CNEL

Airport Land Use Compatibility Plan

- Review Area 1
- Review Area 2
- Parks



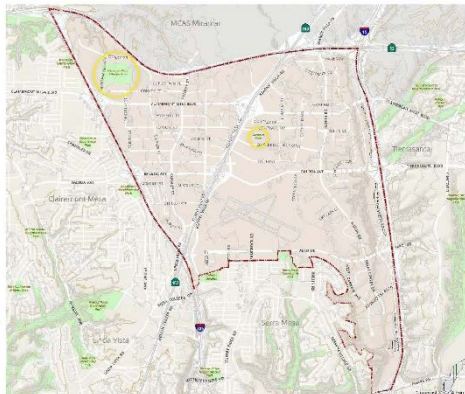
Existing Conditions

Park Planning



EXISTING PARKS: WHERE DO YOU CURRENTLY RECREATE?

Map Atlas
Figure 6-1:
Topography
and Natural
Features



Data Source: City of San Diego, 2015; SANGIS Regional GIS Data Warehouse, 2015. (www.sangis.org)
AECOM, 2016

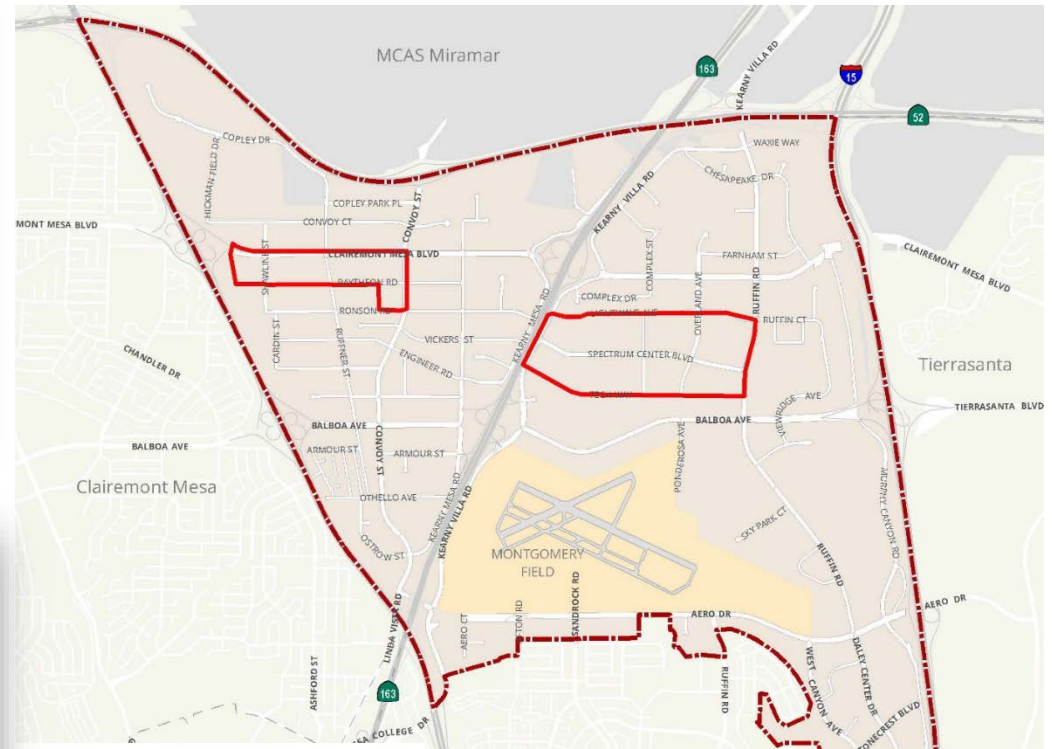
Existing Conditions

Pan-Asian Cultural District



Smart Growth

Smart Growth Employment Areas



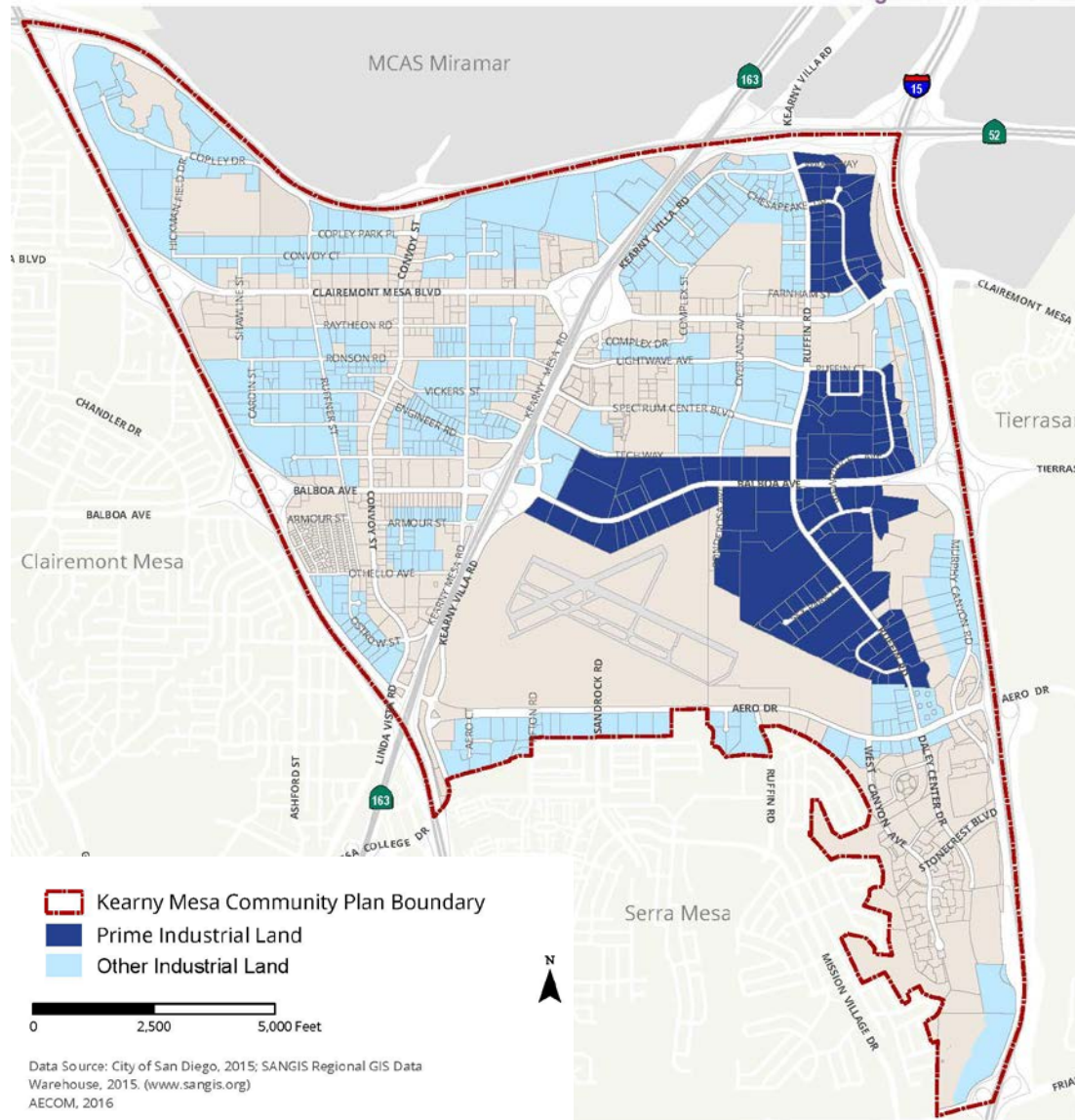
- Kearny Mesa Community Plan Boundary
- Smart Growth Areas
- Community Planning Areas
- Military Use



Data Source: City of San Diego, 2015; SANGIS Regional GIS Data Warehouse, 2015; (www.sangis.org) ASCOM, 2016

Existing Conditions

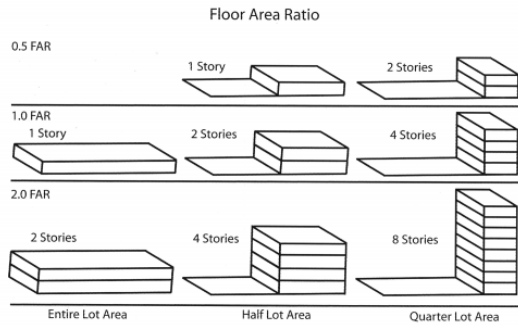
Prime Industrial Lands



Existing Conditions

Non-Residential Floor Area Ratio (FAR)

Floor area ratio is the ratio of the gross building floor area to the lot area



Kearny Mesa Community Plan Boundary

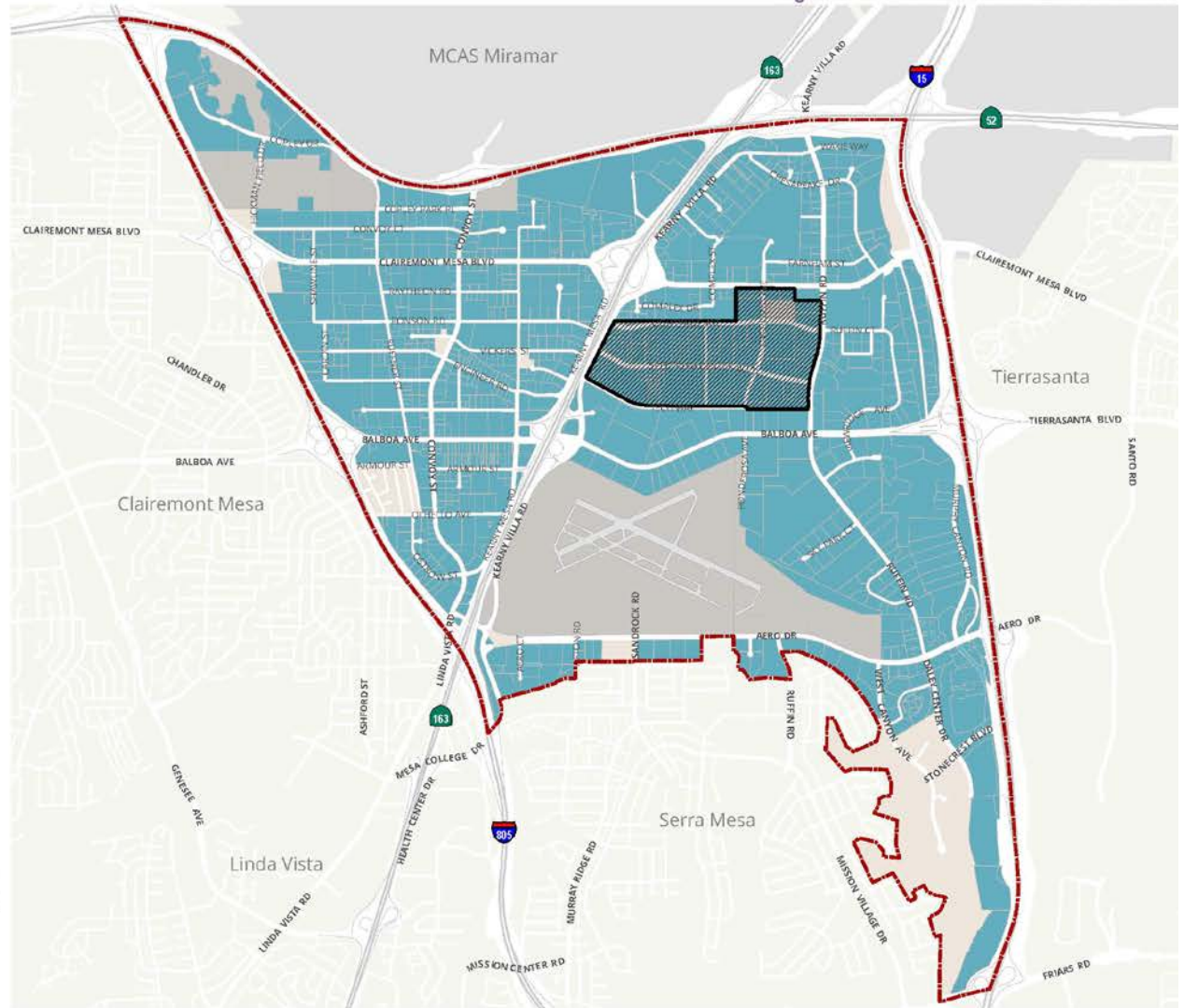
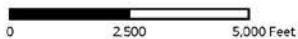
Floor Area Ratio

Unavailable

0.5

New Century Center Master Plan

No FAR Limitations



Existing Conditions

Mobility Network

Public Transit Issues & Opportunities



- Bus Routes
- - - Peak Period-Only Bus Routes
- Transit Center
- Bus Stops (only Kearny Mesa stops shown)
- ★ High Pedestrian and Bicycle Collisions near Bus Stop (>3)
- 0.25 Mile Walkshed from Bus Stop
- Transit Stops with High Ridership
- Infrequent Transit Service along Corridor (30 Minutes or Greater Headways)
- Poor On-Time Performance and Infrequent Transit Service along Corridor



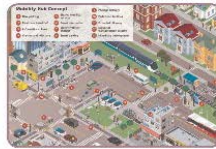
Dedicated Bus Lanes



Transit Priority Signals



High-Quality Transit Amenities



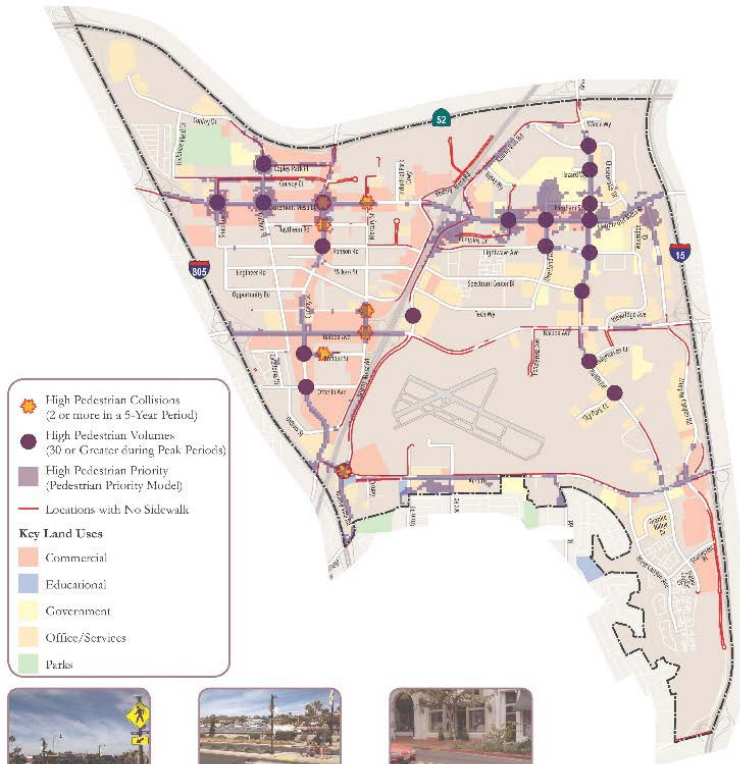
Mobility Hub Concepts



Existing Conditions

Mobility Network

Pedestrian Issues & Opportunities



- High Pedestrian Collisions (2 or more in a 5-Year Period)
 - High Pedestrian Volumes (30 or Greater during Peak Periods)
 - High Pedestrian Priority (Pedestrian Priority Model)
 - Locations with No Sidewalk
- Key Land Uses**
- Commercial
 - Educational
 - Government
 - Offices/Services
 - Parks



Flashing Beacons



Pedestrian Refuge Island



Advanced Stop Bar



Pedestrian Hybrid Beacon Crosswalk



Leading Pedestrian Indicator



Decorative Crosswalks

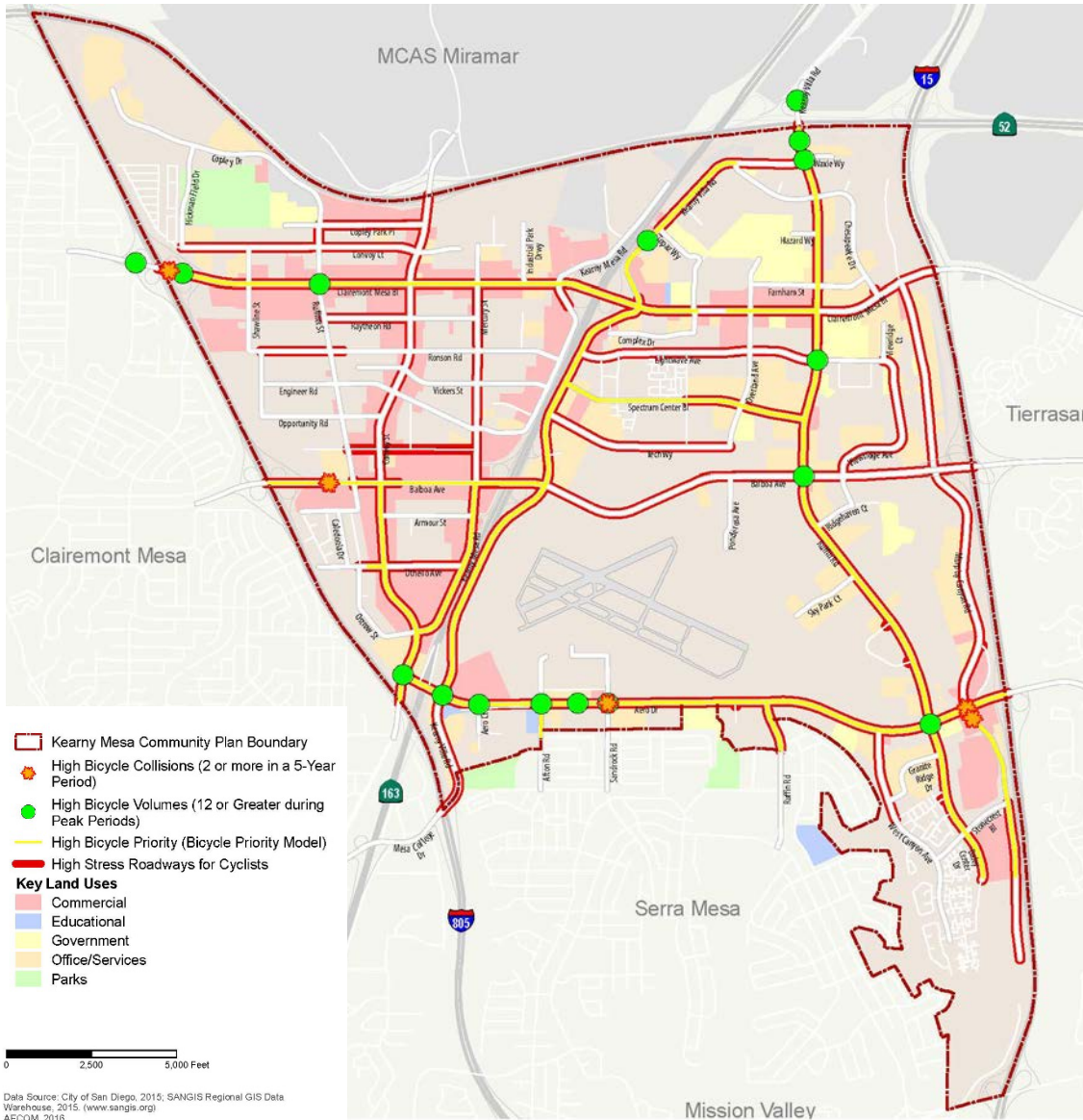


Curb Extensions



Existing Conditions

Mobility Network

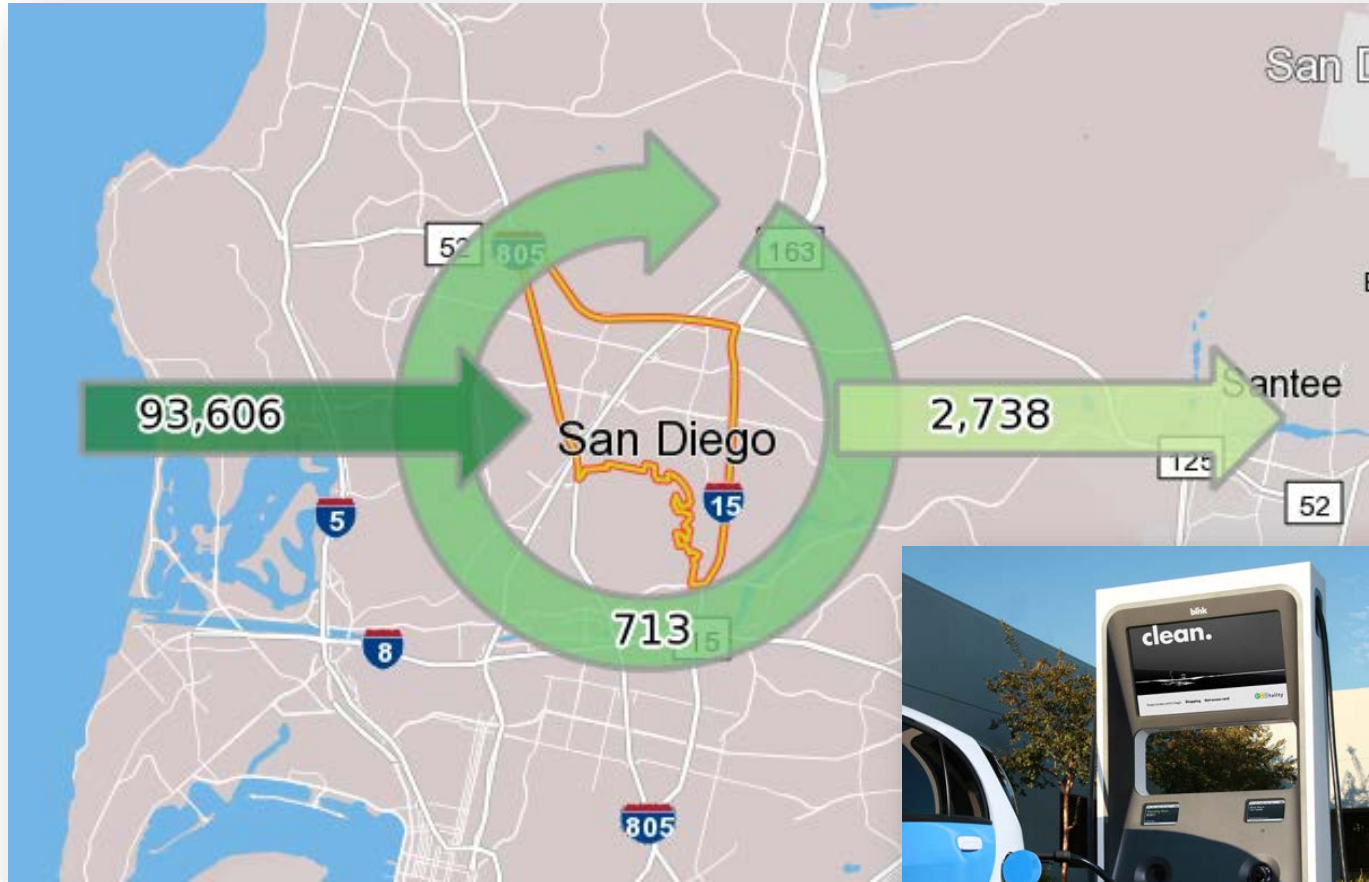


Data Source: City of San Diego, 2015; SANGIS Regional GIS Data Warehouse, 2015. (www.sangis.org) AECOM, 2016



Existing Conditions

Mobility Network



Public Engagement

Meetings, Workshops, and Online Activities

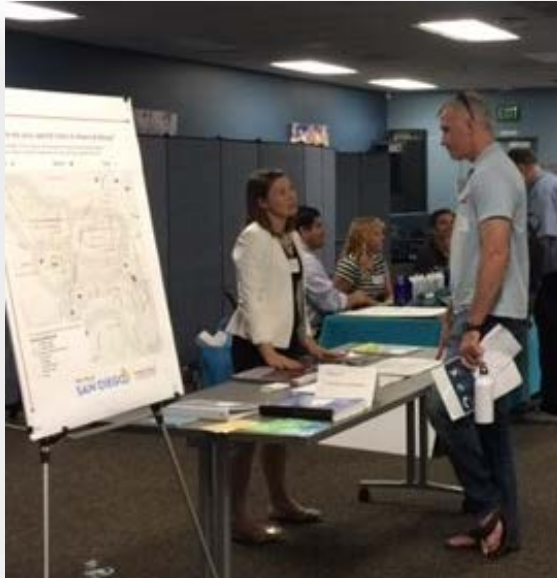


- Kearny Mesa Community Plan Update Subcommittee meetings
- Community workshops and outreach events
- Project website and social media
- Interactive online activities



Public Engagement

Existing Conditions Community Workshop



The City of **SAN DIEGO** **KEARNY MESA CONNECTED** ABOUT THE PROCESS YOUR VOICE COUNTS

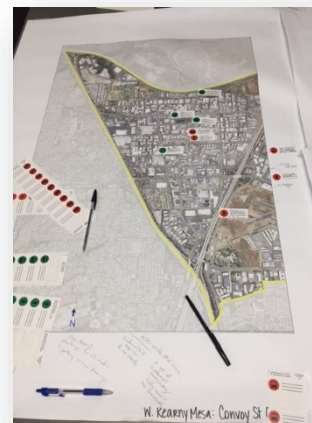
PUBLIC MEETINGS
SIGN UP FOR E-NEWS
LEAVE A COMMENT



PUBLIC MEETING CALENDAR

KEARNY MESA COMMUNITY PLAN UPDATE PUBLIC WORKSHOP (OPEN HOUSE)

Thursday, July 27
3:30 PM to 7:30 PM
Metropolitan Operations Complex (MOC II) Auditorium



I want the Kearny Mesa Community Plan Update process to... Use the map on the back to show the location if applicable

COMMENT

- 1
- 2
- 3
- 4
- 5
- 6
- 7
- 8
- 9
- 10

more Enhance **MPROVE** reduce **BEAUTIFY**
CHANGE increase **PROTECT** Remove
Promote **INCENTIVIZE** MOVE

Public Engagement

Online Activity #1



COMMUNITY PLAN ACTIVITY

Step 2 of 8 - Survey Question 2

25%

When you travel into Kearny Mesa, how long does your one-way work trip typically take?

Please select one.

- Less than 15 minutes
- 15 to 30 minutes
- 30 to 60 minutes
- One hour
- Not applicable

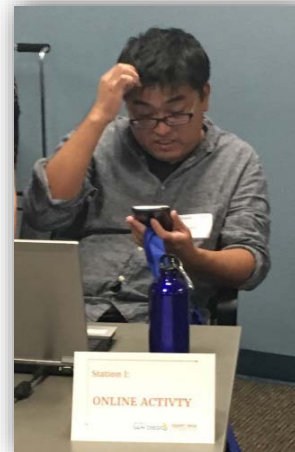
When you travel, is it typically during high traffic times of the day?

- Yes
- No

Add a comment (optional)

PREVIOUS

NEXT



KEARNY MESA COMMUNITY PLAN UPDATE

참여하여 주십시오!

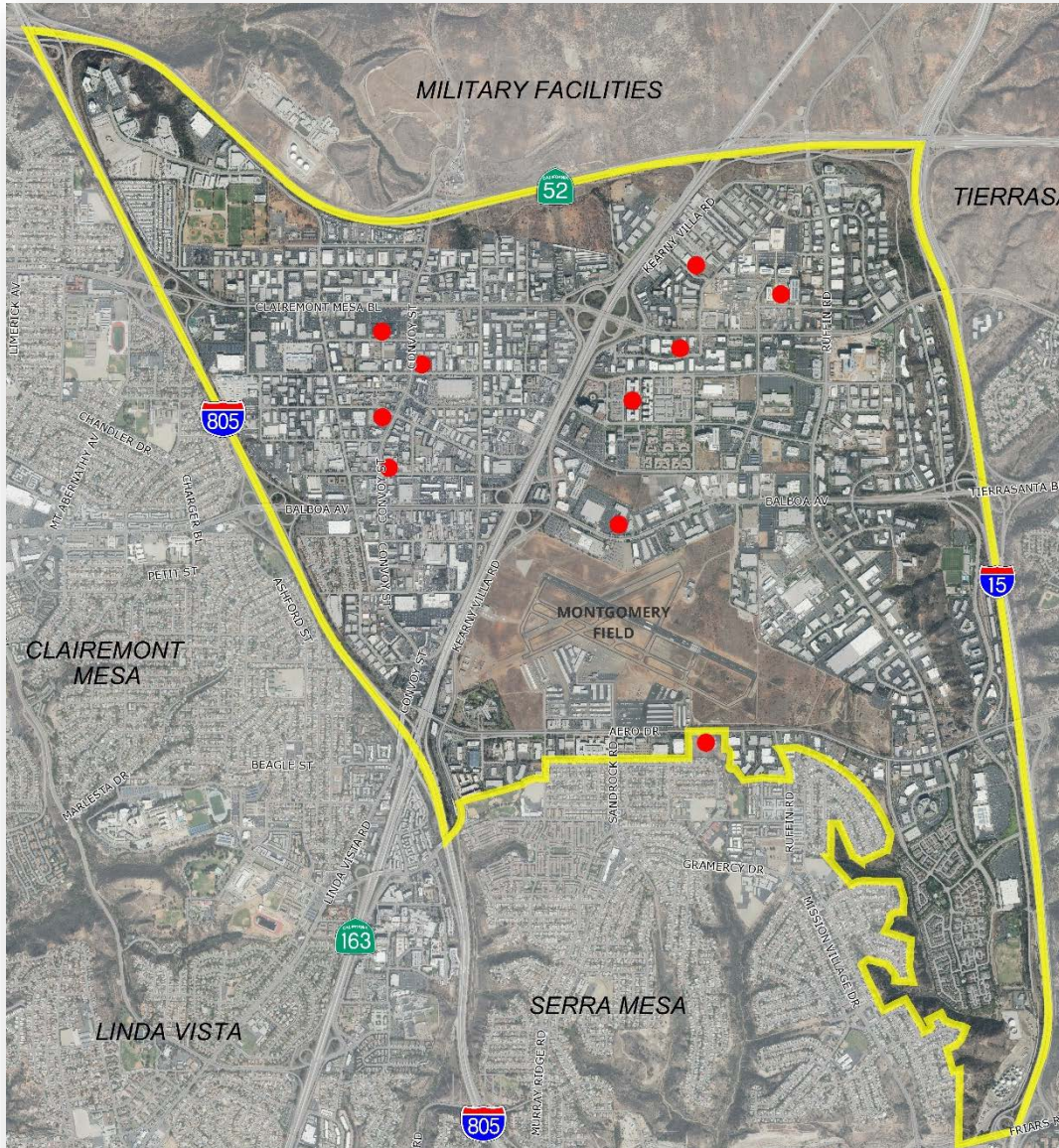
KEARNY MESA 계획 업데이트를 위한 활동에 참여 부탁드립니다.

연결된 Kearny Mesa는 Kearny Mesa 커뮤니티 계획을 업데이트 하기위한 공동 노력입니다. 귀하의 의견은 이 도시 지역의 문제와 기회를 이해하고 앞으로의 우선 순위를 결정하는 데 도움이 되도록 중요합니다. 잠시 시간을 내서 다음의 사항들을 완성해 주십시오.

1. 당신은 어떻게 Kearny Mesa 에서 당신의 시간을 보냅니 까? (해당 사항을 모두 확인하십시오)

- 종업원
- 거주자

KearnyMesaConnected.com



Upcoming Events:

- Zion Market:
August 5th
- San Diego County
Operations Center:
August 9th
- 8840 Complex Drive:
August 15th *changed
to August 22nd*
- Serra Mesa-Kearny
Mesa Branch Library:
August 19th
- Centrum Park:
August 23rd

Public Engagement

Community Interest and Student Engagement



Background

Community Plan Update Timeline



PLAN UPDATE LAUNCH Summer/Fall	EXISTING CONDITIONS Winter/Spring	PLAN ALTERNATIVES Summer/Fall	ENVIRONMENTAL REVIEW Winter/Fall	FINAL PLANS Winter/Spring
Plan Update Kick-off Data Collection	Existing Conditions Documentation Subcommittee Meetings	Opportunities and Constraints Land Use Alternatives Mobility Concepts Online Outreach Activities	Draft Environmental Impact Report (EIR)	Preparation of Final Community Plan and EIR Public hearing process



Ideas and Input