

Engineering & Capital Projects

# Mission Bay Traffic Island Beautification Design Guidelines

Mission Bay Park Committee Meeting  
Date: Tuesday May 5, 2026



# INTRODUCTIONS



SCHMIDT DESIGN GROUP

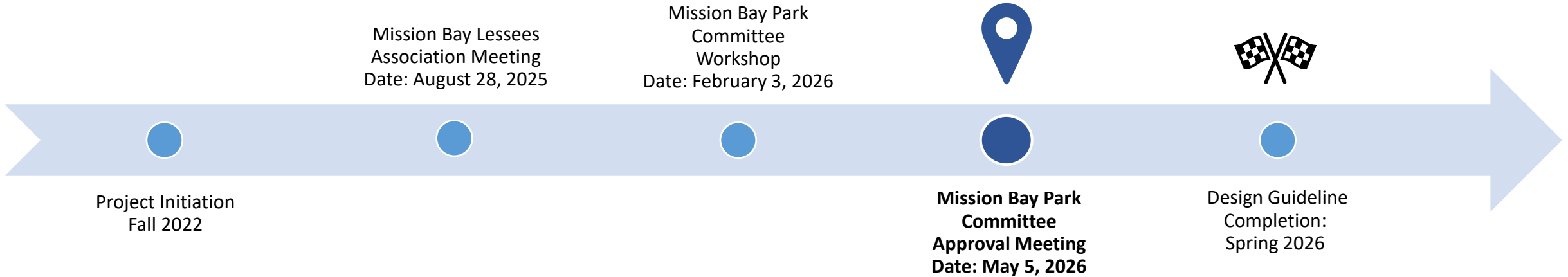
- Introductions
- Project Background & Schedule
- Mission Bay Traffic Island Beautification Guidelines Presentation
- Approval of Guidelines





# Background and Schedule

## Project Schedule:





SCHMIDT  
DESIGN  
GROUP

# MISSION BAY PARK

## MISSION BAY TRAFFIC ISLAND BEAUTIFICATION DESIGN GUIDELINES

CITY OF SAN DIEGO  
MAY 5, 2026

# MISSION BAY TRAFFIC ISLAND BEAUTIFICATION

## CLIENT

**City of San Diego**  
**Engineering & Capital Projects**

Bryan Salguero  
Elizabeth Schroth-Nichols  
Jason Grani  
Tufan Acar

**City of San Diego**  
**Parks & Recreation**

Andy Field  
Charlie Daniels  
Cristobal Amezcua  
Frank Huntlee  
Karolynn Estrada  
Michelle Abella-Shon  
Mike Rodriguez  
Paul Jacob  
Bill Overstreet

## DESIGN CONSULTANT TEAM



**Landscape Architecture**  
Schmidt Design Group, Inc.



**Electrical Engineering**  
BSE Engineering



**Civil Engineering**  
CR Associates



**Environmental Planning**  
Dudek

# MISSION BAY TRAFFIC ISLAND BEAUTIFICATION

## MISSION BAY DISTRICTS

### DE ANZA

- 1 **AREA 1**  
MISSION BAY DRIVE @  
DE ANZA COVE

### EAST MISSION BAY

- 2 **AREA 2**  
EAST MISSION BAY DRIVE @  
CLAIREMONT DRIVE
- 3 **AREA 3**  
EAST MISSION BAY DRIVE @  
TECOLOTE SHORES

### SOUTH SHORES

- 4 **AREA 4**  
SEAWORLD DRIVE CORRIDOR

### QUIVIRA BASIN

- 5 **AREA 5**  
WEST MISSION BAY DRIVE @ SUNSET  
CLIFFS BOULEVARD INTERCHANGE
- 6 **AREA 6**  
SUNSET CLIFFS BLVD. BRIDGE
- 7 **AREA 7**  
WEST SEAWORLD DRIVE
- 8 **AREA 8**  
MARINA VILLAGE AND QUIVIRA WAY

### WEST MISSION BAY

- 9 **AREA 9**  
WEST MISSION BAY DRIVE

### VACATION ISLAND

- 10 **AREA 10**  
INGRAHAM STREET

### CROWN POINT

- 11 **AREA 11**  
CROWN POINT DRIVE

Full Design Guidelines include Appendixes with  
Plants, Lighting, and Maintenance Guidelines



Note: Dashed outlines reflect the contextual  
study areas within each District.

SCALE: NTS ↑  
N

# MISSION BAY TRAFFIC ISLAND BEAUTIFICATION



KEY MAP

## VISION

- Celebrate Mission Bay's history as a regional destination.
- Liven up Mission Bay with durable, colorful, and beautiful plant communities.
- Resort style planting themes mixed with climate appropriate coastal and native planting.
- Use of Mediterranean and local native plants to promote habitat, pollinator pathways, and biodiversity within the corridors.
- Provide a green belt corridor throughout Mission Bay.

## MISSION BAY PARK GUIDELINES

- Planting
- Irrigation
- Lighting
- Hardscape
- Grading & Drainage
- Signage
- Visibility & Safety



**COASTAL WAVES**

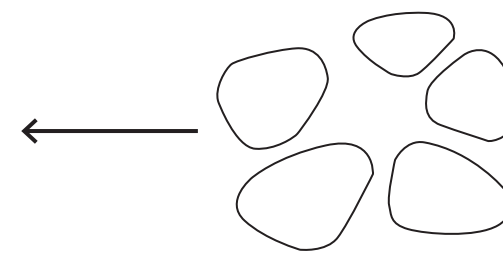
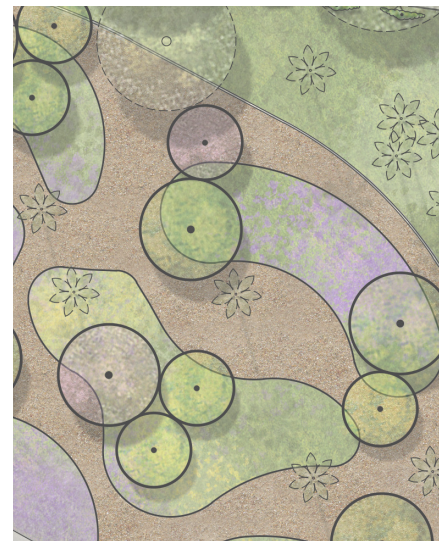


**SAND DUNE PLANTING DRIFTS**



**OTHER CONSIDERATIONS:**

- **High impact planting near key stakeholders**
- **Pedestrian experience vs. vehicular experience**
- **CPTED (crime prevention through environmental design)**
- **Overall beautification**
- **Capture Native American Heritage where possible**



# MATERIAL PALETTE

## Hardscape Material such as:



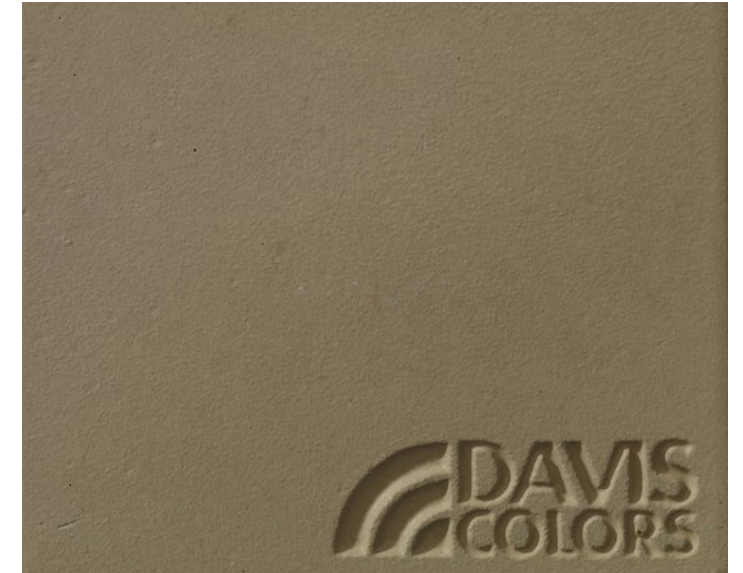
Hardwood Mulch



Stabilized Decomposed Granite  
"California Gold"



Standard Concrete Paving



Concrete Paving Color  
San Diego Buff



Concrete Paving Texture  
Grace Top Cast #5



Concrete Paving Texture  
Grace Top Cast #100

## Lighting Fixtures such as:



Light Pole  
Per City of San Diego Streets Division



Historical Lantern  
Repair or Remove with Replicate

# DISTRICT GUIDELINES

# PLANTING PALETTE

**Existing Trees:** Existing Trees are a sample through out Mission Bay Park.



Strawberry Tree | *Arbutus sp.*



Orchid Tree | *Bauhinia sp.*



California Palm | *Washingtonia filifera*

**Proposed Trees:** Proposed Trees are recommendations.



Gold Medallion | *Cassia leptophylla*



Torrey Pine | *Pinus torreyana*



California Sycamore | *Platanus racemosa*



Senegal Date Palm | *Phoenix reclinata*



Coast Coral tree | *Erythrina caffra*



Eucalyptus | *Eucalyptus sp.*



Silk Floss Tree | *Ceiba speciosa*



Bismark Palm | *Bismarckia nobilis*



Eastern Redbud | *Cercis canadensis*



Ficus | *Ficus sp.*



Yellow African Tulip Tree | *Spathodea campanulata*



Chilean Wine Palm | *Jubaea chilensis*



Jacaranda | *Jacaranda mimosifolia*



Coast Live Oak | *Quercus agrifolia*



Tipu Tree | *Tipuana tipu*

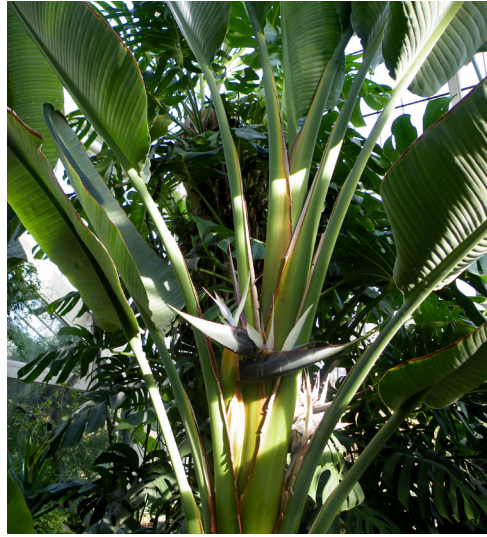
# DISTRICT GUIDELINES

# PLANTING PALETTE

Shrubs such as:



Bougainvillea | *Bougainvillea* 'Barbara Karst'



Giant Bird of Paradise | *Strelitzia reginae*



Cape Honeysuckle | *Tecoma capensis*



Yellow Bells | *Tecoma stans*



Purple-Flowered Rock Rose | *Cistus purpureus*



Deer Muhly | *Muhlenbergia rigens*

Ground Covers such as:



Coyote Brush | *Baccharis pilularis* 'Pigeon Point'



Carpet Rose | *Rosa* x 'Morapplay'



Prostrate Rosemary | *Rosmarinus officinalis* 'Prostratus'



African Daisy | *Gazania rigens*



Purple Trailing Lantana | *Lantana montevidensis*



Latin American Fleabane | *Erigeron karvinskianus*



Agave sp.



Orange Clock Vine | *Thunbergia gregorii*



Aloe sp.



Natal Plum | *Carissa macrocarpa*



Blue Fingers | *Senecio mandraliscae*



Festuca sp.

# DISTRICT GUIDELINES

# MISSION BAY TRAFFIC ISLAND BEAUTIFICATION

## What We Heard

### **1. NATIVE PLANTING - HIGHLIGHT THE PERCENTAGE OF NATIVE PLANTS IDENTIFIED IN THE PLANT LIST TO BE USED ON FUTURE PROJECTS.**

- **High Impact Planting - We recommend 15%-25% California natives at high impact planting areas near key stakeholders, and 30%-50% California natives at low impact areas.**

### **2. VEHICULAR VERSUS PEDESTRIAN EXPERIENCE - UPDATE GUIDELINES TO REFLECT PLANTING APPROACH AT PEDESTRIAN AND VEHICULAR AREAS.**

- **Vehicular Versus Pedestrian Experience - The vehicular planting experience results in much grander, larger scale gestures while the pedestrian planting experience is at a much more granular, human scale.**

### **3. REPRESENT THE CULTURAL HISTORY OF INDIGENOUS COMMUNITIES.**

- **Cultural Representation- As projects are developed cultural inspiration and placemaking opportunities should be considered during the design process to pay homage to the local native communities.**

# MISSION BAY TRAFFIC ISLAND BEAUTIFICATION

## THE VISION OF MISSION BAY PARK

### PLANTING

The introduction of the new plant aesthetic indicated in the 'Character' includes planting tree groves as successors to the older Eucalyptus and Melaleuca tree plantings along this corridor. Additionally, there are certain areas that include existing decorative turf that provides minimal or no usable play value. Recommendations will include removal of these underutilized turf areas to be replaced with native tree groves and potentially under story plant materials when appropriate. Thinning of overly dense pine groves in certain locations may provide for better health and longevity of these plantings while generating mulch for under story use. For areas that require a more enhanced aesthetic such as at the Hilton Hotel and Sea World for example, a mix of Mediterranean and succulent plants can be mixed in with the native plantings to provide additional color, texture, and visual interest. Each park district will have a unique experience through accent planting and branding. Planting and lighting will be coordinated with the new park signage.

Key view sheds of the bay should be taken into consideration while implementing this new aesthetic. In high visibility corridors, trees can be clustered in strategic locations instead of being uniformly planted along long stretches of the bay. Where applicable, durable plant material should be used to screen exposed utility appurtenances and pump stations. Plants should be thoughtfully placed to avoid blocking signage.

At enhanced areas, plant communities should include a mix of colorful blooms and textural contrast to create visual interest. Planting types should include a mix of tree species with an emphasis on Coast Live Oaks and Torrey Pines, mid-level under story accent trees, and drought tolerant under story planting where suitable. Existing trees, palms, and under story planting should be pruned and thinned out as necessary. Recommendations will include planting density guidelines based on width of median landscape area. General plant selection and maintenance guidelines for pest control and low water usage will also be included.

15% -20% recommended California natives at high impact planting areas near key stakeholders, and 30% -50% recommended California natives at low impact areas.

The vehicular planting experience results in much grander, larger scale gestures while the pedestrian planting experience is at a much more granular, human scale.

### IRRIGATION

The irrigation systems within Mission Bay Park primarily utilize the Calsense Central Control System. All existing Irrigation systems within the Mission Bay Traffic Island Beautification areas will be upgraded to utilize Cal sense controllers compatible with the current Cal sense Central Control hardware. The use of conventional and 2-wire controllers will be evaluated based on the size and need for potential future expansion. Small systems of 15-20 stations should utilize conventional wiring with radio or GPS/Cellular communication and systems with more than 20 stations or may require future expansion should consider the use of a 2-wire control system with radio or GPS/Cellular communications. All systems will utilize electrically operated control valves and water efficient irrigation heads, bubblers, and drip equipment suited to the individual planting area and selected plant material types. All irrigation systems will be designed to avoid runoff, low head drainage, overspray, or other similar conditions where water could flow onto adjacent property, non-irrigated areas, walks, roadways, or structures. All irrigation equipment specified should be in compliance with the City of San Diego Consultants Guide section 2.18 Irrigation, Appendix B, sample Irrigation legend, and Appendix C, Approved Manufacturers and Products List.

### HARDSCAPE

The hardscape aesthetic also has the opportunity to reflect the materiality, color, and texture of the Mission Bay Park and traffic corridors. Where medians are less than 3'-0" wide, integral color stamped concrete can be utilized with select patterns inspired by the bay. Decomposed granite

**15% -20% recommended California natives at high impact planting areas near key stakeholders, and 30% -50% recommended California natives at low impact areas.**

Plan Project being developed by others for each district. Accent planting should be incorporated around existing and new entry monument signs and wayfinding signs.

### CULTURAL REPRESENTATION

As projects are developed, cultural inspiration and placemaking opportunities should be considered during the design process to pay homage to the local native communities.

### LIGHTING

The overall lighting aesthetic is to compliment the enhanced planting areas while providing safe light levels for pedestrians and drive areas at key locations. Accent lighting should be implemented at designated canopy trees and existing palm trees. Each improvement area should upgrade existing site lighting fixtures with approved LED fixtures and proper BUG ratings. For future improvement areas, the power supply should be evaluated to ensure new pedestrian lighting and accent lighting can be accommodated. Enhanced lighting should be coordinated at existing and new entry monuments and wayfinding signage locations, and should be coordinated with the signage master plan. The historical light fixtures at the Sunset Cliffs Bridge are to be replicated and replaced to reflect the original lighting design but with LED light technology. Existing lighting will be evaluated to determine re-usability and upgrades for new accent lighting opportunities.

### GRADING + DRAINAGE

The general topography of Mission Bay is relatively flat with the exception of areas around some of the roadway interchanges. Improvements should maintain existing drainage patterns and limit additional impervious area to the extent feasible. Existing storm drain infrastructure is generally old, shallow, and subject to tidal influence and sea level rise.

Roadway condition should be a consideration for all median improvements. This general area shows signs of roadway settling and some of the roadways

Priority Development Project thresholds should be designed per Local PDP Exemptions in Section 1.4.3 of Part 1 of the City Stormwater Standards. Proximity to groundwater will likely preclude the use of infiltration Best Management Practices (BMPs) in most locations. The feasibility of connecting subdrain pipes to the existing storm drain will also make traditional biofiltration difficult. Proprietary biofiltration may be the only feasible option for some projects. Such BMPs can be installed relatively easily if they are in close proximity to existing storm drain inlets. If capturing direct runoff from proposed impervious areas is infeasible, equivalent alternative areas could be treated instead.

# MISSION BAY TRAFFIC ISLAND BEAUTIFICATION

## APPENDIX A Master Plant List

### Trees plants such as:

*Aloe thraskii* sp. + cvs. / Tree Aloe  
*Arbutus 'Marina'* / Strawberry Tree  
*Bauhinia purpurea* / Purple Orchid Tree  
*Bismarckia nobilis* / Bismark Palm  
*Brahea armata* / Mexican Blue Palm  
*Cassia leptophylla* / Golden Medallion Tree  
*Ceiba speciosa* / Silk Floss Tree  
*Cercis canadensis*/ Eastern Redbud<sup>^</sup>  
*Cercis occidentalis*/ Western Redbud<sup>^</sup>  
*Corymbia ficifolia* / Red Flowering Gum Eucalyptus  
*Erythrina coralloides* / Coast Coral Tree  
*Eucalyptus deglupta* / Rainbow Eucalyptus  
*Handroanthus impetiginosus* / Pink Trumpet Tree  
*Lophostemon confertus* / Brisbane Box Tree  
*Metrosideros excelsa* / New Zealand Christmas Tree  
*Pinus torreyana* / Torrey Pine<sup>^</sup>  
*Quercus agrifolia* / Coast Live Oak<sup>^</sup>  
*Quercus ilex*/ Holly Oak  
*Sambucus mexicana* / Blue Elderberry<sup>^</sup>  
*Washingtonia filifera* / California Palm<sup>^</sup>

### Screening plants such as:

*Bougainvillea* sp. / Bougainvillea  
*Distictis buccinatoria* / Trumpet Vine  
*Lonicera confusa* /Soft Leafed Honeysuckle  
*Hardenbergia violacea* / Purple Vine Lilac  
*Plumbago auriculata* / Cape Plumbago

### Basin plants such as:

*Carex pansa* / Dune Sedge<sup>^</sup>  
*Carex praegracilis* / California Field Sedge<sup>^</sup>  
*Carex spissa* / San Diego Sedge<sup>^</sup>  
*Iva hayesiana* / San Diego Povertyweed<sup>^</sup>  
*Juncus effusus*/ Soft Rush<sup>^</sup>  
*Juncus patens* + cvs. / California Gray Rush<sup>^</sup>  
*Mulenbergia dubia* / Pine Muhly  
*Muhlenbergia rigens* / Deer Grass<sup>^</sup>  
*Pulchea odorata* / Marsh Fleabane

### Shrubs plants such as:

*Abutilon palmeri* / Indian Mallow<sup>^</sup>  
*Agave* sp. + cvs. / Agave  
*Aloe* sp. + cvs. / Aloe  
*Alyogyne huegelii* / Blue Hibiscus  
*Arctostaphylos* sp. + cvs. / Manzanita<sup>^</sup>  
*Artemisia californica* / California Sagebrush<sup>^</sup>  
*Bahiposis laciniata* / San Diego Sunflower<sup>^</sup>  
*Callistemon 'Little John'* / Dwarf Bottlebrush  
*Cistus purpureus* + cvs. / Rock Rose  
*Dianella* + cvs./ Flax Lily  
*Dietes iridoides* / Fortnight Lily  
*Galvezia speciosa* / Island Snapdragon<sup>^</sup>  
*Encelia californica* / Coast Sunflower<sup>^</sup>  
*Eriogonum fasciculatum* / California Buckwheat<sup>^</sup>  
*Furcraea foetida 'Mediopicata'* / Mauritis Hemp  
*Hesperoyucca whipplei* / Chaparral Yucca<sup>^</sup>  
*Gambelia speciosa* 'Firecracker' / Island Snapdragon<sup>^</sup>  
*Lomandra longifolia* + cvs. / Mat Rush  
*Hesperoaloe parviflora* / Red Yucca  
*Mulenbergia dubia* / Pine Muhly  
*Muhlenbergia rigens* / Deer Grass<sup>^</sup>  
*Opuntia littoralis* / Coast Prickly Pear<sup>^</sup>  
*Phormium tenax* / New Zealand Flax  
*Pittosporum tobira 'Shima'* / Cream De Mint Pittosporum  
*Rhmanus californica* 'Eve Case' / California Coffeeberry<sup>^</sup>  
*Rhaphiolepis* sp. + cvs. / Indian Hawthorn  
*Rosa floribunda 'Floral Carpet'* / Carpet Rose  
*Rosemarinus officinalis* / Rosemary  
*Salvia clevelandii* + cvs. / Cleveland Sage<sup>^</sup>  
*Salvia microphylla 'Hot Lips'* / Hot Lips Sage  
*Strelitzia nicolai* / Giant Bird of Paradise  
*Strelitzia reginae* / Bird of Paradise  
*Tecoma capensis* / Cape Honeysuckle  
*Tecoma stans* / Yellow Bells  
*Westringia fruticosa* / Coast Rosemary  
*Verbena lilacina 'De la Mina'* / De la Mina Verbena<sup>^</sup>  
*Vinca minor* / Periwinkle  
*Yucca pallida* / Pale Leaf Yucca

### Ground Cover plants such as:

*Baccharis pilularis 'Pigeon Point'* / Coyote Brush<sup>^</sup>  
*Carex pansa* / Dune Sedge<sup>^</sup>  
*Carex praegracilis* / California Field Sedge<sup>^</sup>  
*Carissa macrocarpa* + cvs. / Natal Plum Groundcover  
*Dianella* sp. + cvs. / Flax Lily  
*Erigeron karvickianus* / Latin American Fleabane  
*Festuca* sp. / Fescue  
*Lantana* sp. + cvs. / Lantana  
*Arctotis stoechadifolia* / South African Daisy  
*Osteospermum fruticosum* / Trailing African Daisy  
*Rosemarinus officinalis* + cvs. / Rosemary  
*Rosa x 'Morpapplay'* / Ralph's Creeper Groundcover Rose  
*Salvia leucophylla* + cvs. / Purple Sage<sup>^</sup>  
*Senecio mandraliscae* / Blue Finger

*Pinus torreyana* / Torrey Pine<sup>^</sup>

<sup>^</sup> Native California Plants

**Note: Final plant selection will be influenced by community input during future project development**

<sup>^</sup> Native California Plants

**Note: Final plant selection will be influenced by community input during future project development**

# MISSION BAY TRAFFIC ISLAND BEAUTIFICATION

## What We Heard

### 1. NATIVE PLANTING - HIGHLIGHT THE PERCENTAGE OF NATIVE PLANTS IDENTIFIED IN THE PLANT LIST TO BE USED ON FUTURE PROJECTS.

- High Impact Planting - We recommend 15%-25% California natives at high impact planting areas near key stakeholders, and 30%-50% California natives at low impact areas.

### 2. VEHICULAR VERSUS PEDESTRIAN EXPERIENCE - UPDATE GUIDELINES TO REFLECT PLANTING APPROACH AT PEDESTRIAN AND VEHICULAR AREAS.

- Vehicular Versus Pedestrian Experience - The vehicular planting experience results in much grander, larger scale gestures while the pedestrian planting experience is at a much more granular, human scale.

### 3. REPRESENT THE CULTURAL HISTORY OF INDIGENOUS COMMUNITIES.

- Cultural Representation- As projects are developed cultural inspiration and placemaking opportunities should be considered during the design process to pay homage to the local native communities.

# MISSION BAY TRAFFIC ISLAND BEAUTIFICATION

## THE VISION OF MISSION BAY PARK

### PLANTING

The introduction of the new plant aesthetic indicated in the 'Character' includes planting tree groves as successors to the older Eucalyptus and Melaleuca tree plantings along this corridor. Additionally, there are certain areas that include existing decorative turf that provides minimal or no usable play value. Recommendations will include removal of these underutilized turf areas to be replaced with native tree groves and potentially under story plant materials when appropriate. Thinning of overly dense pine groves in certain locations may provide for better health and longevity of these plantings while generating mulch for under story use. For areas that require a more enhanced aesthetic such as at the Hilton Hotel and Sea World for example, a mix of Mediterranean and succulent plants can be mixed in with the native plantings to provide additional color, texture, and visual interest. Each park district will have a unique experience through accent planting and branding. Planting and lighting will be coordinated with the new park signage.

Key view sheds of the bay should be taken into consideration while implementing this new aesthetic. In high visibility corridors, trees can be clustered in strategic locations instead of being uniformly planted along long stretches of the bay. Where applicable, durable plant material should be used to screen exposed utility appurtenances and pump stations. Plants should be thoughtfully placed to avoid blocking signage.

At enhanced areas, plant communities should include a mix of colorful blooms and textural contrast to create visual interest. Planting types should include a mix of tree species with an emphasis on Coast Live Oaks and Torrey Pines, mid-level under story accent trees, and drought tolerant under story planting where suitable. Existing trees, palms, and under story planting should be pruned and thinned out as necessary. Recommendations will include planting density guidelines based on width of median landscape area. General plant selection and maintenance guidelines for pest control and low water usage will also be included.

15% -20% recommended California natives at high impact planting areas near key stakeholders, and 30% -50% recommended California natives at low impact areas.

The vehicular planting experience results in much grander, larger scale gestures while the pedestrian planting experience is at a much more granular, human scale.

### IRRIGATION

The irrigation systems within Mission Bay Park primarily utilize the Calsense Central Control System. All existing Irrigation systems within the Mission Bay Traffic Island Beautification areas will be upgraded to utilize Cal sense controllers compatible with the current Cal sense Central Control hardware. The use of conventional and 2-wire controllers will be evaluated based on the size and need for potential future expansion. Small systems of 15-20 stations should utilize conventional wiring with radio or GPS/Cellular communication and systems with more than 20 stations or may require future expansion should consider the use of a 2-wire control system with radio or GPS/Cellular communications. All systems will utilize electrically operated control valves and water efficient irrigation heads, bubblers, and drip equipment suited to the individual planting area and selected plant material types. All irrigation systems will be designed to avoid runoff, low head drainage, overspray, or other similar conditions where water could flow onto adjacent property, non-irrigated areas, walks, roadways, or structures. All irrigation equipment specified should be in compliance with the City of San Diego Consultants Guide section 2.18 Irrigation, Appendix B, sample Irrigation legend, and Appendix C, Approved Manufacturers and Products List.

### HARDSCAPE

The hardscape aesthetic also has the opportunity to reflect the materiality,

The vehicular planting experience results in much grander, larger scale gestures while the pedestrian planting experience is at a much more granular, human scale.

Plan Project being developed by others for each district. Accent planting should be incorporated around existing and new entry monument signs and wayfinding signs.

### CULTURAL REPRESENTATION

As projects are developed, cultural inspiration and placemaking opportunities should be considered during the design process to pay homage to the local native communities.

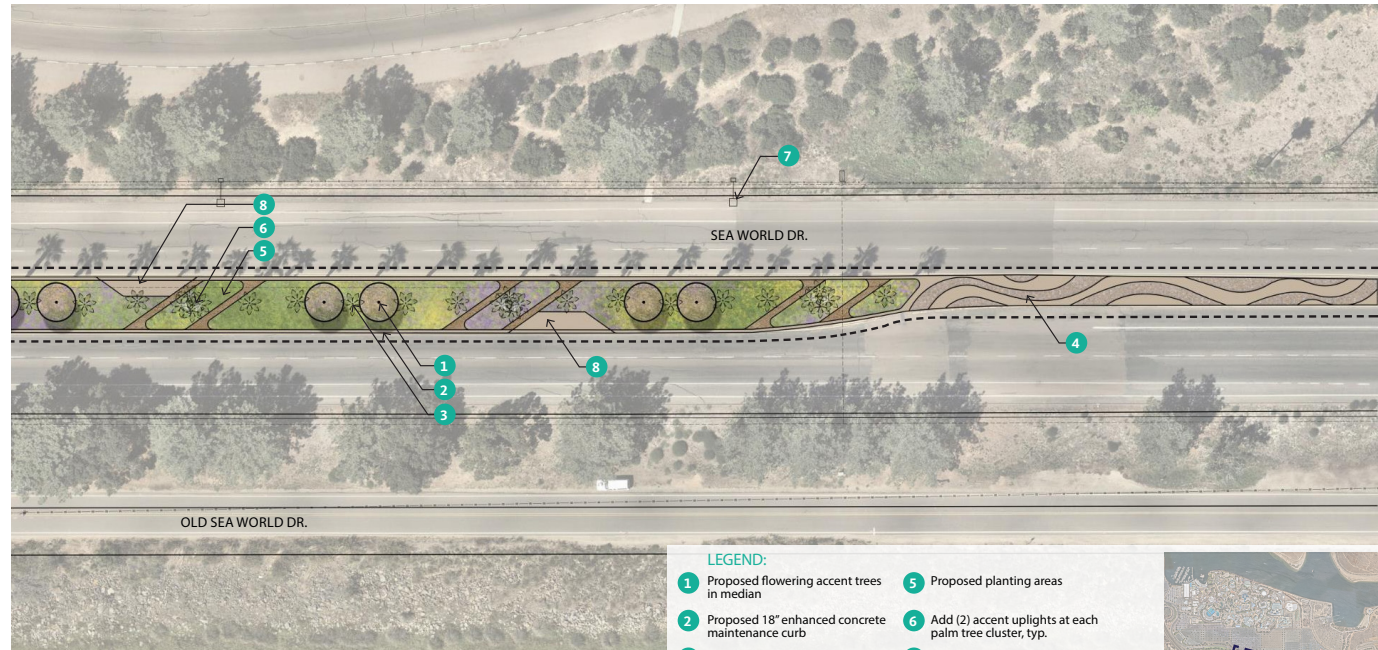
### LIGHTING

The overall lighting aesthetic is to compliment the enhanced planting areas while providing safe light levels for pedestrians and drive areas at key locations. Accent lighting should be implemented at designated canopy trees and existing palm trees. Each improvement area should upgrade existing site lighting fixtures with approved LED fixtures and proper BUG ratings. For future improvement areas, the power supply should be evaluated to ensure new pedestrian lighting and accent lighting can be accommodated. Enhanced lighting should be coordinated at existing and new entry monuments and wayfinding signage locations, and should be coordinated with the signage master plan. The historical light fixtures at the Sunset Cliffs Bridge are to be replicated and replaced to reflect the original lighting design but with LED light technology. Existing lighting will be evaluated to determine re-usability and upgrades for new accent lighting opportunities.

### GRADING + DRAINAGE

The general topography of Mission Bay is relatively flat with the exception of areas around some of the roadway interchanges. Improvements should maintain existing drainage patterns and limit additional impervious area to the extent feasible. Existing storm drain infrastructure is generally old, shallow, and subject to tidal influence and sea level rise.

Priority Development Project thresholds should be designed per Local PDP Exemptions in Section 1.4.3 of Part 1 of the City Stormwater Standards. Proximity to groundwater will likely preclude the use of infiltration Best Management Practices (BMPs) in most locations. The feasibility of connecting subdrain pipes to the existing storm drain will also make traditional biofiltration difficult. Proprietary biofiltration may be the only feasible option for some projects. Such BMPs can be installed relatively easily if they are in close proximity to existing storm drain inlets. If capturing direct runoff from proposed impervious areas is infeasible, equivalent alternative areas could be treated instead.



- LEGEND:**
- 1 Proposed flowering accent trees in median
  - 2 Proposed 18" enhanced concrete maintenance curb
  - 3 Existing palm trees to remain, typ.
  - 4 Proposed enhanced concrete paving in medians
  - 5 Proposed planting areas
  - 6 Add (2) accent uplights at each palm tree cluster, typ.
  - 7 Proposed LED streetlight, typ.
  - 8 Proposed concrete pad with rolled curb for maintenance vehicle parking. Located every 250'.



# Vehicular Planting Experience



- LEGEND:**
- 1 Existing tree to remain, typ.
  - 2 Existing building to remain
  - 3 Existing succulent garden to remain and be supplemented with additional plant material
  - 4 Proposed stabilized decomposed granite pathway with mow curb
  - 5 Proposed concrete pathway
  - 6 Proposed flowering accent tree, typ.
  - 7 Proposed shade structure with seating, typ.
  - 8 Proposed overlook with benches, typ.
  - 9 Proposed natural turf
  - 10 Proposed accent planting, typ.



# Pedstrian Planting Experience

# MISSION BAY TRAFFIC ISLAND BEAUTIFICATION

## What We Heard

### **1. NATIVE PLANTING - HIGHLIGHT THE PERCENTAGE OF NATIVE PLANTS IDENTIFIED IN THE PLANT LIST TO BE USED ON FUTURE PROJECTS.**

- **High Impact Planting - We recommend 15%-25% California natives at high impact planting areas near key stakeholders, and 30%-50% California natives at low impact areas.**

### **2. VEHICULAR VERSUS PEDESTRIAN EXPERIENCE - UPDATE GUIDELINES TO REFLECT PLANTING APPROACH AT PEDESTRIAN AND VEHICULAR AREAS.**

- **Vehicular Versus Pedestrian Experience - The vehicular planting experience results in much grander, larger scale gestures while the pedestrian planting experience is at a much more granular, human scale.**

### **3. REPRESENT THE CULTURAL HISTORY OF INDIGENOUS COMMUNITIES.**

- **Cultural Representation- As projects are developed cultural inspiration and placemaking opportunities should be considered during the design process to pay homage to the local native communities.**

# MISSION BAY TRAFFIC ISLAND BEAUTIFICATION

## THE VISION OF MISSION BAY PARK

### PLANTING

The introduction of the new plant aesthetic indicated in the 'Character' includes planting tree groves as successors to the older Eucalyptus and Melaleuca tree plantings along this corridor. Additionally, there are certain areas that include existing decorative turf that provides minimal or no usable play value. Recommendations will include removal of these underutilized turf areas to be replaced with native tree groves and potentially under story plant materials when appropriate. Thinning of overly dense pine groves in certain locations may provide for better health and longevity of these plantings while generating mulch for under story use. For areas that require a more enhanced aesthetic such as at the Hilton Hotel and Sea World for example, a mix of Mediterranean and succulent plants can be mixed in with the native plantings to provide additional color, texture, and visual interest. Each park district will have a unique experience through accent planting and branding. Planting and lighting will be coordinated with the new park signage.

Key view sheds of the bay should be taken into consideration while implementing this new aesthetic. In high visibility corridors, trees can be clustered in strategic locations instead of being uniformly planted along long stretches of the bay. Where applicable, durable plant material should be used to screen exposed utility appurtenances and pump stations. Plants should be thoughtfully placed to avoid blocking signage.

At enhanced areas, plant communities should include a mix of colorful blooms and textural contrast to create visual interest. Planting types should include a mix of tree species with an emphasis on Coast Live Oaks and Torrey Pines, mid-level under story accent trees, and drought tolerant under story planting where suitable. Existing trees, palms, and under story planting should be pruned and thinned out as necessary. Recommendations will include planting density guidelines based on width of median landscape area. General plant selection and maintenance guidelines for pest control and low water usage will also be included.

15% -20% recommended California natives at high impact planting areas near key stakeholders, and 30% -50% recommended California natives at low impact areas.

The vehicular planting experience results in much grander, larger scale gestures while the pedestrian planting experience is at a much more granular, human scale.

### IRRIGATION

The irrigation systems within Mission Bay Park primarily utilize the Calsense Central Control System. All existing Irrigation systems within the Mission Bay Traffic Island Beautification areas will be upgraded to utilize Cal sense controllers compatible with the current Cal sense Central Control hardware. The use of conventional and 2-wire controllers will be evaluated based on the size and need for potential future expansion. Small systems of 15-20 stations should utilize conventional wiring with radio or GPS/Cellular communication and systems with more than 20 stations or may require future expansion should consider the use of a 2-wire control system with radio or GPS/Cellular communications. All systems will utilize electrically operated control valves and water efficient irrigation heads, bubblers, and drip equipment suited to the individual planting area and selected plant material types. All irrigation systems will be designed to avoid runoff, low head drainage, overspray, or other similar conditions where water could flow onto adjacent property, non-irrigated areas, walks, roadways, or structures. All irrigation equipment specified should be in compliance with the City of San Diego Consultants Guide section 2.18 Irrigation, Appendix B, sample Irrigation legend, and Appendix C, Approved Manufacturers and

### LIGHTING

The overall lighting aesthetic is to compliment the enhanced planting areas while providing safe light levels for pedestrians and drive areas at key locations. Accent lighting should be implemented at designated canopy trees and existing palm trees. Each improvement area should upgrade existing site lighting fixtures with approved LED fixtures and proper BUG ratings. For future improvement areas, the power supply should be evaluated to ensure new pedestrian lighting and accent lighting can be accommodated. Enhanced lighting should be coordinated at existing and new entry monuments and wayfinding signage locations, and should be coordinated with the signage master plan. The historical light fixtures at the Sunset Cliffs Bridge are to be replicated and replaced to reflect the original lighting design but with LED light technology. Existing lighting will be evaluated to determine re-usability and upgrades for new accent lighting opportunities.

### GRADING + DRAINAGE

The general topography of Mission Bay is relatively flat with the exception

## CULTURAL REPRESENTATION

As projects are developed, cultural inspiration and placemaking opportunities should be considered during the design process to pay homage to the local native communities.

### SIGNAGE + WAYFINDING

Signage and wayfinding should be coordinated with the Signage Master Plan Project being developed by others for each district. Accent planting should be incorporated around existing and new entry monument signs and wayfinding signs.

### CULTURAL REPRESENTATION

As projects are developed, cultural inspiration and placemaking opportunities should be considered during the design process to pay homage to the local native communities.

Permanent stormwater quality requirements will vary depending on the size and nature of the improvements. Limiting the amount of proposed impervious by using alternative materials, such as decomposed granite, can help projects maintain "Standard Project" status. Projects that exceed Priority Development Project thresholds should be designed per Local PDP Exemptions in Section 1.4.3 of Part 1 of the City Stormwater Standards. Proximity to groundwater will likely preclude the use of infiltration Best Management Practices (BMPs) in most locations. The feasibility of connecting subdrain pipes to the existing storm drain will also make traditional biofiltration difficult. Proprietary biofiltration may be the only feasible option for some projects. Such BMPs can be installed relatively easily if they are in close proximity to existing storm drain inlets. If capturing direct runoff from proposed impervious areas is infeasible, equivalent alternative areas could be treated instead.

# Camino Ruiz Park



Kumeyaay Inspired Solar Clock



Kumeyaay Inspired Bird Nest



Metate at stream crossing

# QUESTIONS AND FEED BACK



SCHMIDT  
DESIGN  
GROUP

MISSION BAY PARK 

MISSION BAY TRAFFIC ISLAND BEAUTIFICATION  
DESIGN GUIDELINES

CITY OF SAN DIEGO  
MAY 5, 2026

# THANK YOU



SCHMIDT  
DESIGN  
GROUP

## MISSION BAY PARK

### MISSION BAY TRAFFIC ISLAND BEAUTIFICATION DESIGN GUIDELINES

CITY OF SAN DIEGO  
MAY 5, 2026