

ARCHAEOLOGICAL TEST PLAN FOR 1855 SPINDRIFT DRIVE

**CITY OF SAN DIEGO,
SAN DIEGO COUNTY, CALIFORNIA**

PRJ-1141390

Prepared for:

**City of San Diego
Development Services Department
1222 First Avenue, MS 501
San Diego, California 92101**

And:

**Bryce Lee
1855 Spindrift Drive
San Diego, California 92037**

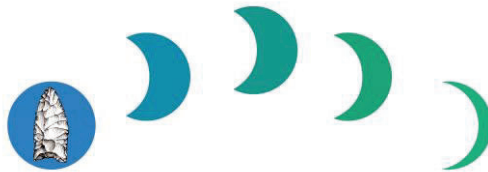
Prepared by:

**Jillian L.H. Conroy, B.A. and
Tracy A. Stropes, M.A., R.P.A.**

Signature: 

**BFSA Environmental Services,
a Perennial Company
14010 Poway Road, Suite A
Poway, California 92064**

November 26, 2025



BFSA Environmental Services
A Perennial Company

Archaeological Information Page

Author: Jillian L.H. Conroy, B.A. and Tracy A. Stropes, M.A., R.P.A.

Consulting Firm: BFSA Environmental Services
A Perennial Company
14010 Poway Road, Suite A
Poway, California 92064
(858) 679-8218

Report Date: November 26, 2025

Report Title: Archaeological Test Plan for 1855 Spindrift Drive, City of San Diego, San Diego County, California (PRJ-1141390)

Prepared for: City of San Diego
Development Services Department
1222 First Avenue, MS 501
San Diego, California 92101

And: Bryce Lee
1855 Spindrift Drive
San Diego, California 92037

Submitted by: BFSA Environmental Services, a Perennial Company
14010 Poway Road, Suite A
Poway, California 92064

Assessor's Parcel Number: 346-451-1100

USGS Quadrangle: Township 15 South, Range 4 West of the *La Jolla*,
California Quadrangle

Study Area: 0.10 acre (4,609 square feet)

Key Words: Archaeological Test Plan; prehistoric; City of San Diego;
USGS *La Jolla* Quadrangle (7.5 minute); archaeological
review; Spindrift Archaeological Site SDI-39.

Table of Contents

| <u>Section</u> | <u>Page</u> |
|---|--------------------|
| 1.0 MANAGEMENT SUMMARY / ABSTRACT | 1.0-1 |
| 2.0 INTRODUCTION | 2.0-1 |
| 3.0 SETTING | 3.0-1 |
| 3.1 Natural Setting | 3.0-1 |
| 3.1.1 Geology and Hydrology | 3.0-1 |
| 3.1.2 Soils | 3.0-1 |
| 3.1.3 Biology | 3.0-1 |
| 3.2 Cultural Setting | 3.0-2 |
| 3.2.1 Paleoenvironment | 3.0-2 |
| 3.2.2 Prehistory | 3.0-3 |
| 3.2.3 History | 3.0-6 |
| 3.2.4 History of the La Jolla Area | 3.0-8 |
| 4.0 RESEARCH DESIGN | 4.0-1 |
| 5.0 ARCHAEOLOGICAL TEST PLAN | 5.0-1 |
| 5.1 Field Methodology | 5.0-4 |
| 5.1.1 Subsurface Testing | 5.0-4 |
| 5.2 Laboratory Analysis | 5.0-5 |
| 5.2.1 Artifact Sorting and Analysis | 5.0-5 |
| 5.3 Provisions for the Discovery of Human Remains | 5.0-5 |
| 5.4 Recordation and Curation | 5.0-6 |
| 6.0 BIBLIOGRAPHY | 6.0-1 |

Appendices

Appendix A – Resumes of Key Personnel

Appendix B – Table 4.0-1

List of Figures

| <u>Figure</u> | <u>Page</u> |
|---|--------------------|
| Figure 1.0-1 General Location Map | 1.0-2 |
| Figure 1.0-2 Project Location Map (USGS) | 1.0-3 |
| Figure 1.0-3 Project Location Map Shown on 1" to 800' Scale | 1.0-4 |
| Figure 1.0-4 Project Development Map | 1.0-5 |
| Figure 5.0-1 Proposed Testing Locations | 5.0-3 |

List of Plates

Plate

Page

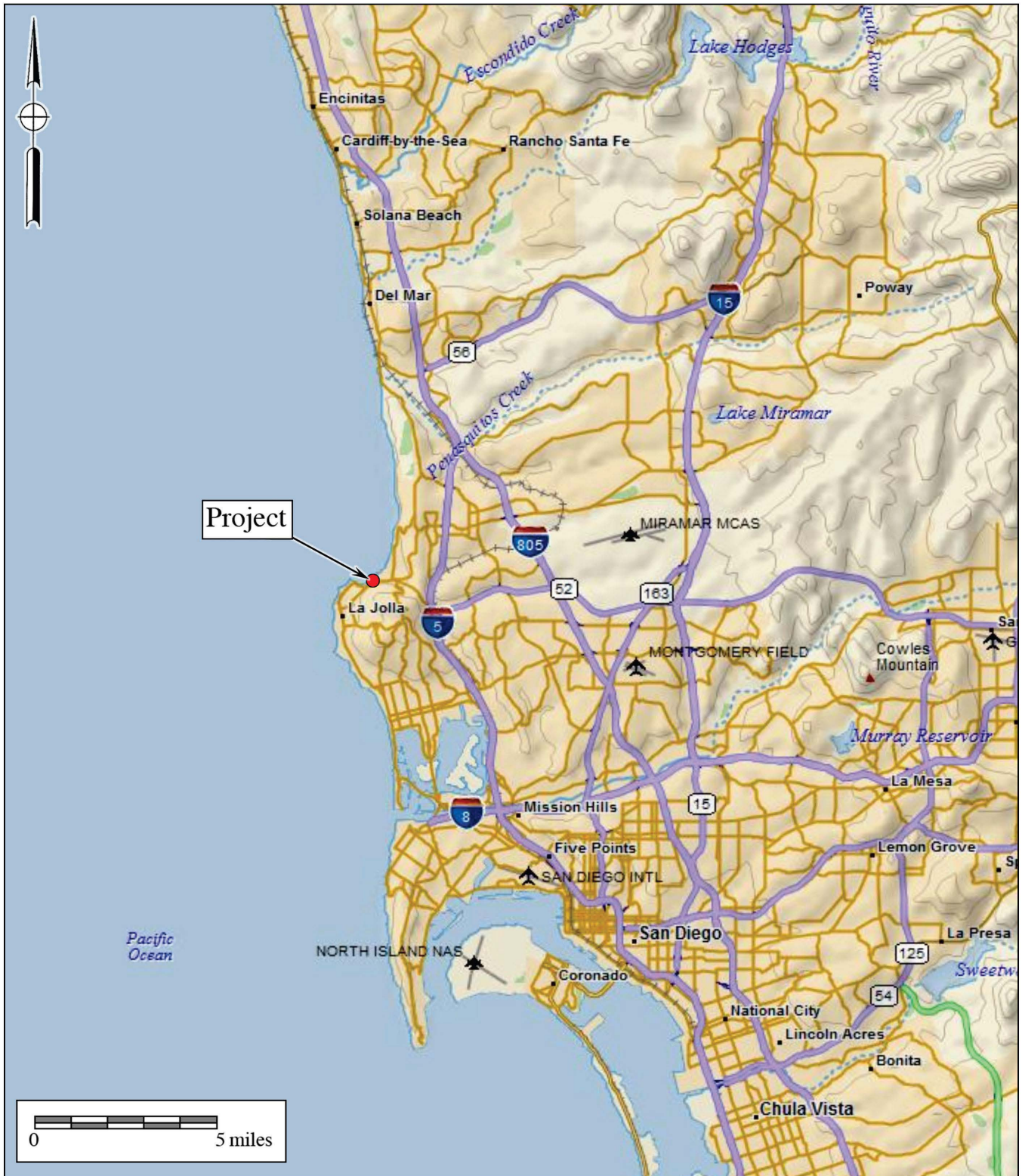
Plate 2.0-1 Aerial view of the current development at 1855 Spindrift Drive2.0-1

1.0 MANAGEMENT SUMMARY/ABSTRACT

BFSA Environmental Services, a Perennial Company (BFSA) has been retained to provide archaeological consulting services for the 1855 Spindrift Drive Project (PRJ-1141390) located in the La Jolla area of the city of San Diego, San Diego County, California (Figures 1.0–1 to 1.0–3). The 0.1-acre subject property is identified as Assessor’s Parcel Number (APN) 346-451-1100. The project applicant is requesting a permit to remove the existing 3,221 square-foot residence and pool and construct a new 2,760 square foot residence over a subterranean garage and basement, a new pool, a 778 square foot detached accessory dwelling unit, landscaping, and perimeter fencing (Figure 1.0–4).

The City of San Diego has required an archaeological survey to address potential impacts to cultural resources. As a result, BFSA has been directed to conduct an archaeological study to determine if the improvement project would affect any significant cultural resources. The plan for this archaeological assessment is presented in this document for review and comment by the City of San Diego. The Archaeological Test Plan (ATP) presented herein complies with the City’s Historical Resources Guidelines of the Land Development Code (SDMC §143.0210) and the current provisions of the City’s Mitigation Monitoring and Reporting Program (MMRP) protocols.

The following ATP describes the proposed program to investigate the potential for cultural resources within the parcel at 1855 Spindrift Drive in the La Jolla area of the city of San Diego, California. Because the lot falls within the boundaries of SDI-39, and previous studies have identified significant portions of SDI-39 near this property, any development within the parcel may encroach into potentially significant cultural deposits associated with SDI-39. However, the extent of the prehistoric site within the subject parcel is unknown, and therefore, the existence of the cultural deposit within the property must be investigated. In order to document the potential for archaeological deposits within the development envelope, archaeological investigations will be conducted to identify the presence/absence of midden soils within the project boundaries and the subsurface extent of any intact deposits.



Project

Figure 1.0-1

General Location Map

The 1855 Spindrift Drive Project

DeLorme (1:250,000)



BFS Environmental Services
A Perennial Company

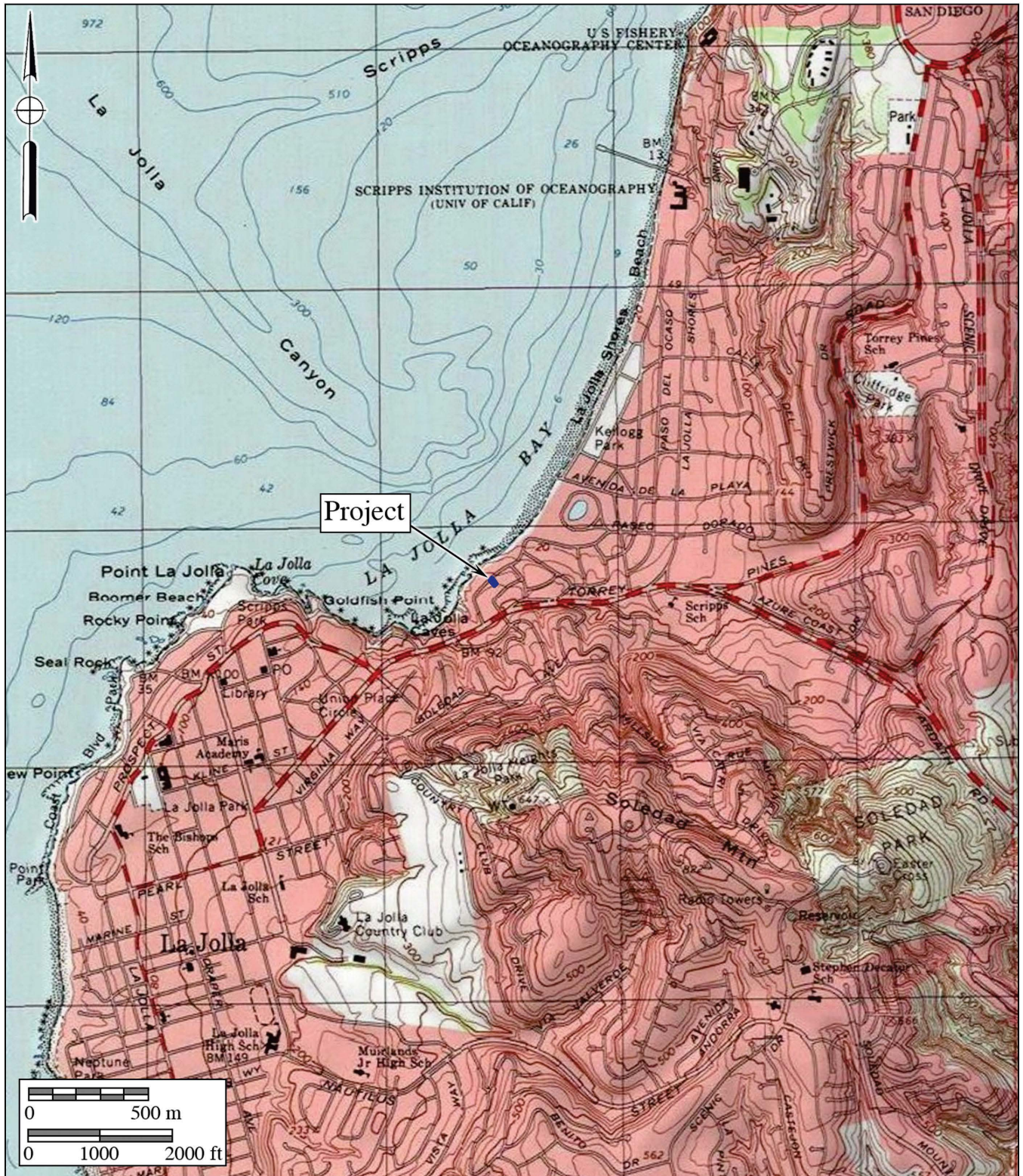


Figure 1.0-2

Project Location Map

The 1855 Spindrift Drive Project

USGS *La Jolla OE West*, and *La Jolla* Quadrangles (7.5-minute series)



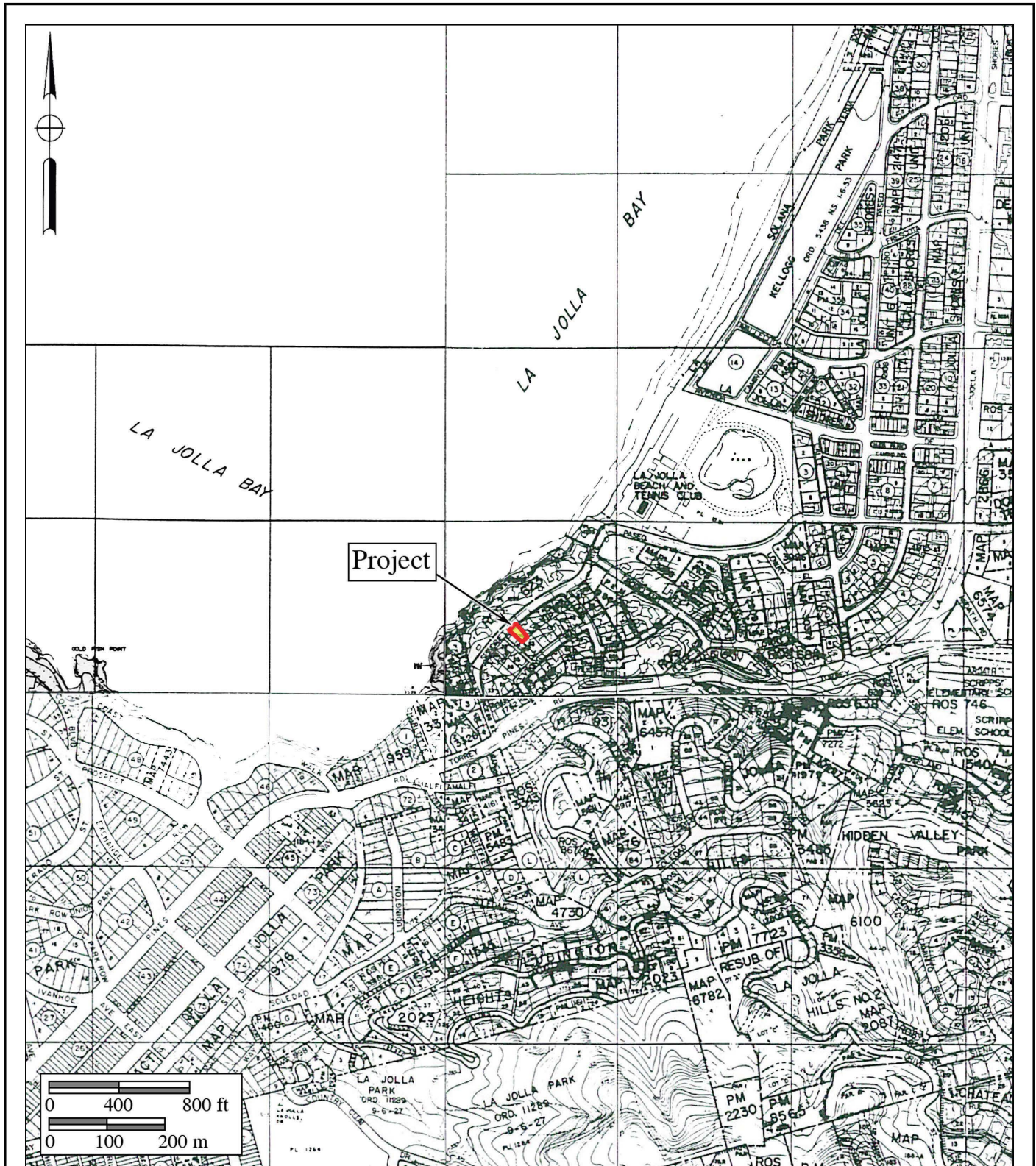


Figure 1.0-3

Project Location Map

The 1855 Spindrift Drive Project

Shown on The City of San Diego 1" to 800' Scale Engineering Map



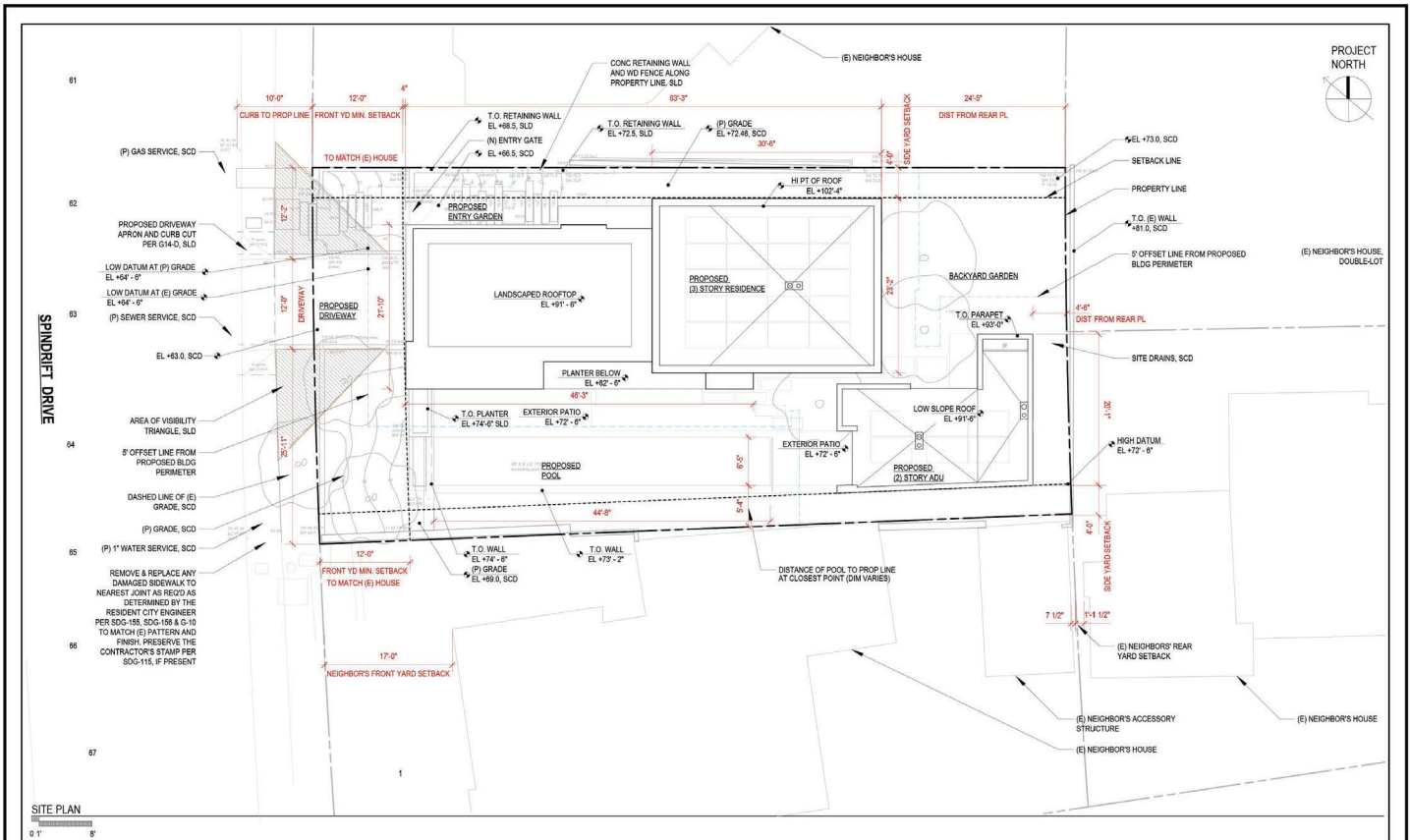


Figure 1.0-4
Project Development Map
The 1855 Spindrift Drive Project

2.0 INTRODUCTION

The ATP for the 1855 Spindrift Drive Project has been prepared to conform to Section 21083.2 of the California Public Resources Code, the California Environmental Quality Act (CEQA), and the City’s Historical Resources Guidelines. The project applicant is requesting a permit from the City of San Diego to remove the existing development at 1855 Spindrift Drive in order to construct a new residence with a subterranean garage and basement, pool, and detached accessory dwelling unit. BFSA has been retained to complete an archaeological survey of the property. As part of the investigation, limited subsurface tests are required to search for evidence of archaeological deposits beneath modern landscaping and fill dirt. The property is currently covered by the existing residence and associated landscaping (Plate 2.0–1).



Plate 2.0–1: Aerial view of the current development at 1855 Spindrift Drive.

Preliminary background research for the property was conducted to evaluate the potential of the project to contain subsurface prehistoric resources. Previous studies indicate that the project is located within the recorded boundaries of the Spindrift Archaeological District (proposed), which includes SDI-39, a previously recorded prehistoric village complex occupied during the late Holocene. Portions of SDI-39 have been previously determined to be significant according to CEQA and City of San Diego criteria. The large village complex is recorded throughout the Spindrift neighborhood and extends across the La Jolla Beach and Tennis Club facility along La Jolla Shores Drive for a considerable distance. The entire prehistoric site covers many acres along the coast and has been impacted by historic and modern developments. Previous testing and mitigation programs have identified a rich cultural deposit that lies underneath modern development elements such as streets and buildings.

Prehistoric artifacts recovered from SDI-39 include manos, metates, arrow projectile points, scrapers, utilized flake tools, scraper planes, bifaces, knives, drills, hammerstones, core tools, Tizon Brown Ware fragments, debitage, trade materials, shell beads (*Olivella* sp. spire-lopped, *Olivella* sp. cups, and *Olivella* sp. and *Haliotis* sp. disks), shell pendants, and bone tools, in addition to animal bone (fish, terrestrial mammals, and birds), fire-altered rock, cobble hearths, charcoal, and marine shell (mostly *Chione* sp., *Argopecten* sp., and *Ostrea* sp.). The archaeological record also denotes that multiple human remains have been identified throughout the Spindrift neighborhood in association with the occupation of SDI-39 over a period of 7,000 to 8,000 years.

It is evident that the 1851 Spindrift Drive Project lies within a highly sensitive archaeological area.

This ATP will discuss the tasks to be implemented to search for evidence of any prehistoric deposits within the project boundaries associated with SDI-39. The testing program will only include accessible locations within the project subject to the proposed development. Testing will include controlled shovel test excavations by archaeologists placed in the currently landscaped areas surrounding the existing house. In the event that the shovel tests produce indications that prehistoric deposits are present, the City will be notified and any additional testing that might be necessary to evaluate the potential significance of the identified cultural materials will be discussed in a subsequent test plan addendum. If test excavations identify cultural resources, then these resources will be evaluated for significance in accordance with CEQA and City of San Diego guidelines. The results of the testing program will be presented to the City in the cultural resources survey and testing report. The goal of this program will be to determine if measures are required to mitigate impacts to significant cultural resources.

3.0 SETTING

The project setting includes both the physical and biological contexts of the proposed project, as well as the cultural setting of prehistoric and historic human activities in the general area. Provided below is a discussion of both the environmental and cultural settings of the study area, the relationship between the two, and the relevance of that relationship to the project.

3.1 Natural Setting

The project, which is located in the La Jolla Community Plan Area in the city of San Diego, encompasses gently sloping land on the coastal plain east of La Jolla Bay. Elevations at the property range from approximately 74 to 78 feet above mean sea level (AMSL). The lot currently contains a residence and associated hardscape and landscaping.

3.1.1 Geology and Hydrology

San Diego County lies in the Peninsular Ranges Geologic Province of southern California. The mountainous zone, which extends from northwest to southeast through the county, ranges to a maximum height of 6,533 feet AMSL (Beauchamp 1986). Foothills and valleys, which comprise the cismontane region, extend west from the mountains. This region typically receives more rainfall than the mesas and less than the mountainous region. Between the foothills and the coast lies the coastal mesa region, which is cut by several large drainages originating in the mountains and foothills. The coast is characterized by large bays and lagoons, major rivers that empty into the sea, and mesas that terminate at the ocean in the form of bluffs (Beauchamp 1986).

The project and the portion of SDI-39 being investigated are mapped as a disturbed, graded lot; however, the Bay Point Formation (Kennedy 1975) surrounding the project consists of a geologic deposit composed of mostly marine and nonmarine fossiliferous sandstone. The project lies just west of several faults, including Ardath, Mount Soledad, and Rose Canyon. Cobbles of quartzite and metavolcanic materials are found in Eocene formations of the Poway and La Jolla groups, which are located north and east of the project. These cobbles would have been available on the surface in deposits surrounding Mount Soledad.

3.1.2 Soils

Soils in the area fall within the Huero-Stockpen Association and are characterized by moderately well drained loams to gravelly clay loams that have a subsoil of clay or sandstone (Bowman et al. 1973). Soil in the immediate vicinity of the project is mapped as Urban Land, which consists of densely urbanized and developed areas where soil identification is not possible.

3.1.3 Biology

The prehistoric biological community was characterized by a variety of soft, low, aromatic, drought-deciduous shrubs, such as California sagebrush, flat-top buckwheat, bush sunflower, and

sages, with scattered evergreen shrubs including lemonadeberry, laurel sumac, coyote bush, and toyon. Plants in the understory included native needlegrass, mariposa lily, golden yarrow, everlasting flowers, deerweed, rattlesnake weed, soap plant, San Diego barrel cactus, ashy spike moss, San Diego goldenstar, and blue dicks (Beauchamp 1986; Sawyer 1995).

Many different terrestrial and aquatic animals live in these habitat types. Terrestrial animals include mule deer, black-tailed hare, cottontail rabbit, California ground squirrel, Botta's pocket gopher, deer mouse, woodrat, bat, coyote, gray fox, striped skunk, raccoon, bobcat, mountain lion, California quail, pied-billed grebe, cormorant, great blue heron, mallard, and a variety of reptiles and amphibians. A number of different pelagic fish, such as perch and marine mollusks, including scallops, oysters, and clams, would have been available in nearby Mission Bay and the associated mudflats.

3.2 Cultural Setting

The area of western San Diego County has a rich and extensive record of both prehistoric and historic human activity. The cultures that have been identified in the general vicinity of the project area include the Paleo Indian manifestation of the San Dieguito Complex, the Archaic Stage and Early Milling Stone horizons represented by the La Jolla Complex, and the Late Prehistoric Kumeyaay Native Americans. Following the Hispanic intrusion into the region in 1769, the Presidio of San Diego, Mission San Diego de Alcalá, and the Pueblo of San Diego were established. The project area was possibly used in conjunction with the agricultural activities of the mission until the period of mission secularization. The pastoral activities of the Mexican Period from 1822 to 1846 likely included use of the areas near the project for grazing purposes. Farming also blossomed and gradually replaced cattle ranching in many of the coastal areas. A brief discussion of the prehistoric and historic cultural elements documented for the project area is provided below.

3.2.1 Paleoenvironment

Because of the close relationship between prehistoric settlement and subsistence patterns and the environment, it is necessary to understand the setting in which these systems operated. At the end of the final period of glaciation, approximately 11,000 to 10,000 years before the present (YBP), the sea level was considerably lower than it is now; the coastline at that time would have been two to two and a half miles west of its present location (Smith and Moriarty 1985a, 1985b). At approximately 7,000 YBP, the sea level rose rapidly, filling in many coastal canyons that had been dry during the glacial period. The period between 7,000 and 4,000 YBP was characterized by conditions that were drier and warmer than they were previously, followed by a cooler, moister environment similar to the present-day climate (Robbins-Wade 1990). Changes in sea level and coastal topography are often manifested in archaeological sites through the types of shellfish that were utilized by prehistoric groups. Different species of shellfish prefer certain types of environments and dated sites that contain shellfish remains reflect the setting that was exploited

by the prehistoric occupants.

Unfortunately, pollen studies have not been conducted for this area of San Diego; however, studies in other areas of southern California, such as Santa Barbara, indicate that the coastal plains supported a pine forest between approximately 12,000 and 8,000 YBP (Robbins-Wade 1990). After 8,000 YBP, this environment was replaced by more open habitats, which supported oak and non-arboreal communities. The coastal sage scrub and chaparral environments of today appear to have become dominant after 2,200 YBP (Robbins-Wade 1990).

3.2.2 Prehistory

In general, the prehistoric record of San Diego County has been documented in many reports and studies, several of which represent the earliest scientific works concerning the recognition and interpretation of the archaeological manifestations present in this region. Geographer Malcolm Rogers initiated the recordation of sites in the area in the 1920s and 1930s, using his field notes to construct the first cultural sequences based upon artifact assemblages and stratigraphy (Rogers 1966). Subsequent scholars expanded the information gathered by Rogers and offered more academic interpretations of the prehistoric record. Moriarty (1966, 1967, 1969), Warren (1964, 1966), and True (1958, 1966) all produced seminal works that critically defined the various prehistoric cultural phenomena present in this region and additional studies have sought to further refine these earlier works (Cardenas 1986; Moratto 1984; Moriarty 1966, 1967; True 1970, 1980, 1986; True and Beemer 1982; True and Pankey 1985; Waugh 1986).

In sharp contrast, the current trend in San Diego prehistory has also resulted in a revisionist group that rejects the established cultural historical sequence for San Diego. This revisionist group (Warren et al. 1998) has replaced the concepts of La Jolla, San Dieguito, and all of their other manifestations with an extensive, all-encompassing, chronologically undifferentiated cultural unit that ranges from the initial occupation of southern California to around A.D. 1000 (Bull 1983, 1987; Ezell 1983, 1987; Gallegos 1987; Kyle et al. 1990; Stropes 2007). For the present study, the prehistory of the region is divided into four major periods including: Early Man, Paleo Indian, Early Archaic, and Late Prehistoric.

Early Man Period (Prior to 8500 B.C.)

At the present time, there has been no concrete archaeological evidence to support the occupation of San Diego County prior to 10,500 YBP. Some archaeologists, such as Carter (1957, 1980) and Minshall (1976), have been proponents of Native American occupation of the region as early as 100,000 years ago. However, their evidence for such claims is sparse at best and they have lost much support over the years as more precise dating techniques have become available for skeletal remains thought to represent early man in San Diego. In addition, many of the “artifacts” initially identified as products of early man in the region have since been rejected as natural products of geologic activity. Some of the local proposed early man sites include Texas Street, Buchanan Canyon, Brown, Mission Valley (San Diego River Valley), Del Mar, and La

Jolla (Bada et al. 1974; Carter 1957, 1980; Minshall 1976, 1989; Moriarty and Minshall 1972; Reeves 1985; Reeves et al. 1986).

Paleo Indian Period (8500 to 6000 B.C.)

For the region, it is generally accepted that the earliest identifiable culture in the archaeological record is represented by the material remains of the Paleo Indian Period San Dieguito Complex. The San Dieguito Complex was thought to represent the remains of a group of people who occupied sites in this region between 10,500 and 8,000 YBP, and who were related to or contemporaneous with groups in the Great Basin. As of yet, no absolute dates have been forthcoming to support the great age attributed to this cultural phenomenon. The artifacts recovered from San Dieguito Complex sites duplicate the typology attributed to the Western Pluvial Lakes Tradition (Moratto 1984; Davis et al. 1969). These artifacts generally include scrapers, choppers, large bifaces, and large projectile points, with few milling tools. Tools recovered from San Dieguito Complex sites, along with the general pattern of their site locations, led early researchers to believe that the people of the San Dieguito Complex were a wandering hunter/gatherer society (Moriarty 1969; Rogers 1966).

The San Dieguito Complex is the least understood of the cultures that have inhabited the San Diego County region. This is due to an overall lack of stratigraphic information and/or datable materials recovered from sites identified as belonging to the San Dieguito Complex. Currently, controversy exists among researchers regarding the relationship of the San Dieguito Complex and the subsequent cultural manifestation in the area, the La Jolla Complex. Although, firm evidence has not been recovered to indicate whether the San Dieguito Complex “evolved” into the La Jolla Complex, the people of the La Jolla Complex moved into the area and assimilated with the people of the San Dieguito Complex, or the people of the San Dieguito Complex retreated from the area because of environmental or cultural pressures.

Early Archaic Period (6000 B.C. to A.D. 0)

Based upon evidence suggesting climatic shifts and archaeologically observable changes in subsistence strategies, a new cultural pattern is believed to have emerged in the San Diego region around 6000 B.C. Archaeologists believe that this Archaic Period pattern evolved from or replaced the San Dieguito Complex culture, resulting in a pattern referred to as the Encinitas Tradition. In San Diego, the Encinitas Tradition is believed to be represented by the coastal La Jolla Complex and its inland manifestation, the Pauma Complex. The La Jolla Complex is best recognized for its pattern of shell middens and grinding tools closely associated with marine resources and flexed burials (Shumway et al. 1961; Smith and Moriarty 1985a). Increasing numbers of inland sites have been identified as dating to the Archaic Period, focusing upon terrestrial subsistence (Cardenas 1986; Smith 1996; Raven-Jennings and Smith 1999a, 1999b).

The tool typology of the La Jolla Complex displays a wide range of sophistication in the lithic manufacturing techniques used to create the tools found at their sites. Scrapers, the dominant

flaked tool type, were created by either splitting cobbles or by finely flaking quarried material. Evidence suggests that after about 8,200 YBP, milling tools began to appear at La Jolla Complex sites. Inland sites of the Encinitas Tradition (Pauma Complex) exhibit a reduced quantity of marine-related food refuse and contain large quantities of milling tools and food bone. The lithic tool assemblage shifts slightly to encompass the procurement and processing of terrestrial resources, suggesting seasonal migration from the coast to the inland valleys (Smith 1996). At the present time, the transition from the Archaic Period to the Late Prehistoric Period is not well understood and many questions remain concerning cultural transformation between periods, possibilities of ethnic replacement, and/or a possible hiatus from the western portion of the county.

Late Prehistoric Period (A.D. 0 to 1769)

The transition into the Late Prehistoric Period within the project area is primarily represented by a marked change in archaeological patterning known as the Yuman Tradition. This tradition is primarily represented by the Cuyamaca Complex, which is believed to have derived from the mountains of southern San Diego County. The people of the Cuyamaca Complex are considered ancestral to the ethnohistoric Kumeyaay (Diegueño). Although several archaeologists consider the local Native American tribes to be relatively latecomers, the traditional stories and histories passed down through oral tradition by the local Native American groups speak both presently and ethnographically to their presence here as being since the time of creation.

The Kumeyaay Native Americans were a seasonal hunting and gathering people with cultural elements that were very distinct from the people of the La Jolla Complex. Noted variations in material culture include cremation, the use of the bow and arrow, and adaptation to the use of acorns as a main food staple (Moratto 1984). Along the coast, the Kumeyaay made use of marine resources by fishing and collecting shellfish for food. Seasonally available plant food resources (including acorns) and game were sources of nourishment for the Kumeyaay. By far the most important food resource for these people were acorns, which represented a storable surplus and in turn allowed for seasonal sedentism and its attendant expansion of social phenomena.

Firm evidence has not been recovered to indicate whether the people of the La Jolla Complex were present when the Kumeyaay Native Americans migrated into the coastal zone. However, stratigraphic information recovered from Site SDI-4609 in Sorrento Valley may suggest a hiatus of 650 ± 100 years between the occupation of the coastal area by the La Jolla Complex ($1,730 \pm 75$ YBP is the youngest date for the La Jolla Complex inhabitants at SDI-4609) and Late Prehistoric cultures (Smith and Moriarty 1983). More recently, a reevaluation of two prone burials at the Spindrift Site excavated by Moriarty (1965) and radiocarbon dates of a pre-ceramic phase of Yuman occupation near Santee suggest a comingling of the latest La Jolla Complex inhabitants and the earliest Yuman inhabitants about 2,000 YBP (Kyle and Gallegos 1993).

3.2.3 History

Exploration Period (1530 to 1769)

The historic period around San Diego Bay began with the landing of Juan Rodríguez Cabrillo and his men in 1542 (Chapman 1921). Sixty years after the Cabrillo expeditions (1602 to 1603), Sebastian Vizcaíno made an extensive and thorough exploration of the Pacific coast. Although the voyage did not extend beyond the northern limits of the Cabrillo track, Vizcaíno had the most lasting effect upon the nomenclature of the coast. Many of the names he gave to various locations have survived, whereas nearly every one of Cabrillo's has faded from use. Cabrillo gave the name "San Miguel" to the first port at which he stopped in what is now the United States; 60 years later, Vizcaíno changed it to "San Diego" (Rolle 1969).

Spanish Colonial Period (1769 to 1821)

The Spanish occupation of the claimed territory of Alta California took place during the reign of King Carlos III of Spain (Engelhardt 1920). José de Gálvez, a powerful representative of the king in Mexico, conceived the plan to colonize Alta California and thereby secure the area for the Spanish (Rolle 1969). The effort involved both military and religious components, where the overall intent of establishing forts and missions was to gain control of the land and the native inhabitants through conversion. Actual colonization of the San Diego area began on July 16, 1769, when a Spanish exploration party commanded by Gaspar de Portolá (with Father Junípero Serra in charge of religious conversion of the native populations) arrived by the overland route to San Diego to secure California for the Spanish (Palou 1926). The natural attraction of the harbor at San Diego and the establishment of a military presence in the area solidified the importance of San Diego to the Spanish colonization of the region and the growth of the civilian population.

Missions were constructed from San Diego to as far north as San Francisco. The mission locations were based upon a number of important territorial, military, and religious considerations. Grants of land were made to those who applied, but many tracts reverted back to the government due to lack of use. As an extension of territorial control by the Spanish Empire, each mission was placed so as to command as much territory and as large a population as possible. While primary access to California during the Spanish Period was by sea, the route of El Camino Real served as the land route for transportation, commercial, and military activities within the colony. This route was considered the most direct path between the missions (Rolle 1969; Caughey 1970). As increasing numbers of Spanish and Mexican peoples, as well as the later Americans during the Gold Rush, settled in the area, the Native American populations diminished as they were displaced or decimated by disease (Carrico and Taylor 1983).

Mexican Period (1821 to 1846)

Father Miguel Hidalgo y Costilla and a group of Native American followers began a revolt against Spanish rule on September 16, 1810. Hidalgo did not succeed in the fight against the Spanish and was ultimately executed. However, the revolt continued and the Spanish were finally

defeated in 1821. Mexican Independence Day is celebrated on September 16 of each year in honor of Father Hidalgo's bravery. The revolution also had repercussions in the northern territories, and by 1834, all of the mission lands in Alta California had been removed from the control of the Franciscan Order under the Acts of Secularization. Without proper maintenance, the missions quickly began to disintegrate. After 1836, missionaries ceased to make regular visits to the outlying Native American communities to minister their needs (Engelhardt 1920). However, large tracts of land continued to be granted to those who applied or who had gained favor with the Mexican government. Grants of land were also made to settle government debts, and the Mexican government was also called upon to reaffirm some older Spanish land grants shortly before the Mexican-American War in 1846 (Moyer 1969).

Anglo-American Period (1846 to Present)

California was invaded by United States troops during the Mexican-American War from 1846 to 1848. The acquisition of strategic Pacific ports and California land was one of the principal objectives of the war (Price 1967). At the time, the inhabitants of California were practically defenseless, and they quickly surrendered to the United States Navy in July 1847 (Bancroft 1886).

The cattle ranchers of the "counties" of southern California prospered during the cattle boom of the early 1850s. They were able to "reap windfall profit ... pay taxes and lawyer's bills ... and generally live according to custom" (Pitt 1966). However, cattle ranching soon declined, contributing to the expansion of agriculture. With the passage of the "No Fence Act," San Diego's economy shifted from stock raising to farming (Robinson 1948). The act allowed for the expansion of unfenced farms, which was crucial in an area where fencing material was practically unavailable. Five years after its passage, most of the arable lands in San Diego County had been patented as either ranchos or homesteads, and growing grain crops replaced raising cattle in many of the county's inland valleys (Blick 1976; Elliott 1883 [1965]).

By 1870, farmers had learned to dry farm and were coping with some of the peculiarities of San Diego County's climate (*San Diego Union* 1868; Van Dyke 1886). Between 1869 and 1871, the amount of cultivated acreage in the county rose from less than 5,000, to more than 20,000 acres (*San Diego Union* 1872). Of course, droughts continued to hinder the development of agriculture (Crouch 1915; *San Diego Union* 1870; Shipek 1977). Large-scale farming in San Diego County was limited by a lack of water and the small size of arable valleys. The small urban population and poor roads also restricted commercial crop growing. Meanwhile, cattle continued to be grazed in parts of inland San Diego County. In the Otay Mesa area, for example, the "No Fence Act" had little effect upon cattle farmers because ranches were spaced far apart and natural ridges kept the cattle out of nearby growing crops (Gordinier 1966).

During the first two decades of the twentieth century, the population of San Diego County continued to grow. The population of the inland portion of the county declined during the 1890s, but between 1900 and 1910, it rose by about 70 percent. The pioneering efforts were over, the railroads had broken the relative isolation of southern California, and life in San Diego County

became similar to other communities throughout the west. After World War I, the history of San Diego County was primarily determined by the growth of San Diego Bay. In 1919, the United States Navy decided to make the bay the home base for the Pacific Fleet (Pourade 1967), as did the aircraft industry in the 1920s (Heiges 1976). The establishment of these industries led to the growth of the county as a whole; however, most of the civilian population growth occurred in the coastal areas in the northern portion of the county where the population almost tripled between 1920 and 1930.

During this time period, the history of inland San Diego County was subsidiary to that of the city of San Diego, which had become a Navy center and an industrial city (Heiges 1976). In inland San Diego County, agriculture became specialized and recreation areas were established in the mountain and desert areas. Just before World War II, urbanization began to spread to the inland parts of the county.

3.2.4 History of the La Jolla Area

A limited research effort was initiated in order to characterize the circumstances of the early development of La Jolla so that the current project could be placed in context with the surrounding community. Several early land developments contributed to the overall disturbance to the major prehistoric sites in the area of the project. However, small development projects continuously encounter pockets of cultural sites that have survived grading and construction impacts over the years.

The origin of the name La Jolla, most researchers agree, is a variation of the original “La Hoya,” which literally translated from Spanish means pit, hole, grave, or valley. The equivalent American translation is “river basin” (Castillo and Bond 1975). The city surveyor, James Pascoe, spelled it “La Joya” on his map of city land in 1870, which translates as “the jewel.” The location of La Hoya (or La Joya) was consistently shown as the canyon in which the southern portion of Torrey Pines Road is currently located. The first post office was established on February 28, 1888, and closed on March 31, 1893, but reopened as “Lajolla” (one word) on August 17, 1894. On June 19, 1905, the name of the post office was changed to “La Jolla” (two words) (Salley 1977).

The first purchase of Pueblo Lands in this area occurred on February 27, 1869, when the City of San Diego sold Pueblo Lot 1261 to Samuel Sizer. On the same day, the City sold Pueblo Lot 1259 to Daniel Sizer. These lots, which sold for \$1.25 per acre, were located south of “La Hoya Valley.” The *San Diego Union* (1869) referred to the canyon as “La Hoya” when describing Sizer’s agricultural development to the south. By the 1870s, excursions to the point and cove were offered by the Horton House in their Concord Coach, a stagecoach drawn by four horses (*San Diego Union* 1932).

The boom of the 1880s extended to La Jolla with the construction of a hotel and rental cottages (Randolph 1955). Initially, water supplies were unreliable, consisting of only two sources: a small well in Rose Canyon and a small pipeline connected to the Pacific Beach water supply. Reliable transportation to La Jolla came with the extension of the San Diego, Old Town,

and Pacific Beach Railway to La Jolla in 1894. This narrow-gauge railroad was responsible for bringing passengers and prefabricated cottages (on flat cars) to the growing community (Randolph 1955). The railroad was dismantled in 1919, but not before an unsuccessful experiment with a gasoline-powered rail car (known locally as the “Red Devil”) was conducted.

As the number of residences and businesses increased in La Jolla, so did the need for public services. On July 10, 1888, the San Diego City Council passed an ordinance providing for the disposal of garbage, night soil, dead animals, ashes, and rubbish (Document 101817). In 1909, natural gas was brought to La Jolla, and in 1911, electricity was made available to the community (Randolph 1955). An electric railway provided service to La Jolla between 1924 and 1940. In 1918, street paving began, and by 1922, the Girard Street business section was completely paved.

Visitors to La Jolla enjoyed the park at Alligator Head from the earliest days of stagecoach excursions. Trees and shrubs were planted around the park, but a months-long failure of the water supply in 1890 caused many of the plants to die. During the 1890s, the park was also the focus of construction for guest cottages and hotels, such as the La Jolla Beach House, which indicates that developmental impacts to prehistoric archaeological resources, as well as impacts from increased visitation, occurred during this early period. Randolph (1955) wrote about a Native American settlement at La Jolla (probably SDI-39), which was supported by Native American informants and the recovery of several artifacts, including metates, stone utensils, and other relics from La Jolla Cove. As the development of La Jolla continued, other subdivisions and plots were converted from farming and/or grazing to residential use.

The earliest notable development in this area was the construction of the Spindrift Inn in the 1920s. Also at this time, the initial development of the La Jolla Beach and Tennis Club (originally the La Jolla Beach and Yacht Club) took place. These early facilities gained in popularity and were successful in spite of the Depression that gripped the country between the stock market crash of 1929 and the opening of World War II. The La Jolla Vista Subdivision, on the other hand, was slow in building to capacity, possibly because of the real estate bust from 1925 to 1926 (Brandes et al. 1999).

Two military training camps came to La Jolla during World War II: Camp Callan and Camp Elliot. In addition, two emplacements on Mount Soledad and one on the beach in La Jolla were established during the war years (Pierson 2001). Although these military installations were replaced after the Korean War with the University of California at San Diego campus and the expansion of the Scripps Institution of Oceanography, the economic base of La Jolla grew to include a substantial business element. This trend has continued with ever-present tourism playing a significant part in the local economy. Throughout the history of this community, the residential population has included both permanent and seasonal residents, many of whom have achieved a significant degree of financial and historical notoriety and success.

4.0 RESEARCH DESIGN

The primary goal of the research design is to attempt to reconstruct the way in which humans have used the land and resources within the subject property through time. As people used the area, evidence of their activities has been preserved on and in the ground. Archaeological methods are used to retrieve and analyze portions of this evidence to reconstruct past lifeways. This type of inquiry is part of the cultural resource management aspect of environmental conformance studies. The testing program for the 1855 Spindrift Drive Project will include a records search, background research, test excavations (as outlined in Section 5.0), and the mapping of any features, artifacts, and locations of subsurface archaeological tests to be conducted.

Primary objectives, such as the determination of the boundaries of any discoveries, depth of any archaeological deposits, stratigraphy, integrity, content, and spatial distribution of any subsurface artifacts and cultural ecofacts, is essential to the current test phase of the program. Normally, a research orientation transcends these goals by expanding the meaning of information extracted from a site through the use of archaeological questions important in current scientific research. Regional and temporal research issues should be taken into consideration when posing such questions. However, because the boundary of buried intact cultural resources is uncertain, the research design for the current project is limited in scope. The topics and associated research questions provided below address concerns specific to the project.

The archaeological testing at 1855 Spindrift Drive will incorporate information derived from other studies in the neighborhood that have encountered elements of SDI-39. The list of relevant studies is presented in Table 4.0–1 (Appendix B). Site SDI-39 has been previously listed as significant in its entirety by the City of San Diego, regardless of the status of site disturbance, which varies throughout the Spindrift neighborhood. Therefore, this research design is not focused upon the determination of the integrity of the deposit at the property, but rather the extent of the site within the property and the potential of the excavation data to address current scientific research issues.

The orientation developed for the research design for the 1855 Spindrift Drive ATP employs regional and locally-specific questions and identifies data needs to approach focused archaeological research questions. For the research design, many of the research questions overlap, as they address environmental setting and prehistoric occupation patterns. Although a wide range of research questions may be possible for investigations at SDI-39, the primary research areas selected for the ATP are based upon previous work in the neighborhood, the potential of available data to address these questions, and possible overall contributions to the archaeological record.

The specific research questions focus upon chronology, lithic technology, settlement patterning, and subsistence strategy. The goal of the testing program is to determine if data from the 1855 Spindrift Drive Project can possibly contribute to the proposed research questions that reflect the research conducted elsewhere in the Spindrift neighborhood. The research topics listed

below will be used to guide the study and to determine the sample size necessary to provide sufficient materials to address these posed research questions.

Chronology

What was the period(s) of use and/or occupation for Site SDI-39? Is there evidence of multiple periods of occupation at SDI-39 and can they be identified through radiocarbon analysis? Temporally, how does this site fit into the overall pattern for San Diego County? That is, what group or culture is being examined in the context of the known culture history, and is it possible to differentiate between periods of occupation(s)?

Determining the period(s) of occupation of a site or region can be accomplished by the use of radiocarbon dating and relative dating techniques. Radiocarbon dating depends upon the retrieval of dateable materials such as bone or shell. In San Diego County, radiocarbon dates range from approximately 9,000 years ago to historic contact. In contrast, relative dating is based upon the recovery of specific artifacts that are temporally diagnostic such as atlatl dart points, arrow points, and ceramics. Stratigraphic analyses, obsidian sourcing, and hydration rind measurements may also serve as relative dating measures. The combination of both radiocarbon measures and relative dating observations help to provide a greater chronological picture for any given site.

Previous work at SDI-39 has produced radiocarbon dates that suggest occupation for the site within the Late Period; however, there is considerable archaeological evidence identifying the earlier components. Dating the earlier components of SDI-39 would provide greater understanding of the site's occupation history. In addition, this research helps to delineate (where possible) divisions between Late Prehistoric and Early Archaic occupation. Finally, further chronological analyses may also reveal if the site may be better understood synchronically, diachronically, or both. However, in order to address the posed research questions, a more accurate temporal placement of the site will be necessary.

Study Topics

1. Can multiple periods of occupation be determined through chronological analysis of SDI-39?
2. Does the chronological data suggest longer periods of occupation during the Late Prehistoric Period or the Early Archaic Period?
3. Where does SDI-39 place chronologically in the overall pattern for sites along the San Diego coast and southern California in general?
4. How do temporally diagnostic artifacts from SDI-39 compare to C-14 data, and does the data suggest stratigraphic mixing of the assemblage?

Data Needs

Previous work in this general area of La Jolla indicates that, at a minimum, shell and bone are present within SDI-39. Therefore, materials will be selected for radiocarbon dating based upon context and quality. If the recovered data permits, relative dating may be possible using point types, the presence of ceramics, and obsidian analysis. If obsidian is present in the collection, samples may be tested for hydration values that can be used to relatively date the site by using comparable hydration rates.

Lithic Technology

Which technological lithic trajectories were employed by the prehistoric inhabitants of SDI-39? Which lithic reduction strategies were in use and when? What role did milling technology play at SDI-39? Is there notable variation in observable lithic technologies between coastal sites and inland sites of the same time period?

Several flake tool reduction strategies have been identified for the southern California coastal region. These strategies include biface reduction, split-nodule core reduction, small blade core reduction, bipolar core reduction, and nodule reduction. The decision to use one or the other of these techniques was dependent upon several factors, the most important of which being the type of material being worked, the morphology of the parent material, and the intended tool. For example, some lithic materials, such as Monterey chert and Piedra de Lumbre (PDL) chert, are more easily worked, and with heat treatment, become some of the best knappable material in the western United States. Problems exist, however, in the form of the material in its raw state. PDL chert generally occurs in small pieces and was thus extensively used in the late Holocene for small arrow points (Pignoli 1992). However, this material has been recovered from a site dating to 8,000 years ago (Gallegos 1991).

Monterey chert occurs in small cobbles and in layers. For small cobbles, bipolar reduction would be the most efficient method of producing usable flakes. For the layered Monterey chert, biface reduction was the most expedient method of producing tools, as the layers were already thin and only the outer perimeter needed to be worked (Cooley 1982). Other chert sources in San Diego need to be identified and the material chemically characterized. Large biface production and reduction requires pieces of material large enough to be reduced and homogeneous enough to produce workable items. Santiago Peak Volcanics found in San Diego have been extensively used for the production of large tools (*i.e.*, adzes, scrapers, scraper planes, cores, and hammerstones) and bifaces (Schroth and Flenniken 1997). The use of quarry material from these formations may be an early to middle Holocene marker, as the larger spear and dart points would have necessitated the use of larger blocks of parent material.

Nodule core reduction comprises numerous techniques with specific trajectories such as pyramidal-shaped, split-nodule core reduction (used to produce thick, contracting flakes for flake

tools), the production of teshoa flakes for large flake tools, and nodule core tools wherein the parent material, rather than the removed flakes, becomes the tool. Cobble layers found in streambeds, across coastal terraces, and along the coast provided materials for these reduction sequences. Nodule core reduction is known in southern California archaeological literature as “cobble core reduction” (Gallegos et al. 2002, 2003). The term “nodule” was substituted for “cobble” because a cobble is geologically defined as a size clast (64 to 256 millimeters), and many prehistoric core and core-based artifacts (such as some battered implements) were manufactured from boulders (greater than 256 millimeters) and, to a lesser extent, pebbles (four to 64 millimeters). The term “nodule” was selected because nodules as a class are not size-specific and tend to be rounded to sub-rounded.

For north-coastal San Diego, nodule core reduction technology is the most common core technology identified in archaeological sites that range from the early Holocene to historic contact with native peoples (Stropes 2007). In addition, products of nodule core reduction are some of the most abundant tool forms identified in assemblages throughout the region. This simple and expedient technology may have been so commonly employed because it provided a simple and relatively effortless way to produce useful flakes and flake blanks intended for immediate use or further reduction into a wide range of tool forms. Effort is defined in reference to the lithic technology described herein as the amount of energy needed to reduce stone into a viable product. Because of the local abundance of metavolcanic materials in nodule form, there was little need for more material-efficient, and consequently more time-consuming, technology.

Prehistorically, the use of ground stone implements (*i.e.*, manos, metates, and pestles) is common throughout San Diego County archaeology sites. However, when viewed chronologically, many researchers have suggested that lithic milling equipment was either absent or rare in assemblages identified to the Paleo Indian Period (Chartkoff and Chartkoff 1984; Moratto 1984; Moriarty 1966; Rogers 1939), suggesting a greater reliance upon food packages that required minimal milling-based processing for consumption. In contrast, some believe that a lack of milling at Paleo Indian Period sites is a reflection of site use patterning rather than the absence of milling technology for the time period.

To date, minimal research has been conducted regarding ground stone manufacture and the use, or change of use, through time in San Diego County. However, studies such as Flenniken’s 1993 analysis of tools from SDI-10,148 have demonstrated that sites exist in San Diego that demonstrate ground stone manufacture and rejuvenation activities (Flenniken et al. 1993). Therefore, analysis of debitage and tools from habitation sites can provide information regarding manufacture, use, and rejuvenation of ground stone, if present. In addition, variation in resource exploitation and changes in site function should be analyzed to determine if ground stone tools were designed for specific functions (*i.e.*, mortar and pestle use for acorn processing) and if technological changes in milling equipment occurred through time as climate and resources changed.

Previous work at properties in the Spindrift area that contain elements of SDI-39 has recovered a wide range of flaked lithic materials and ground stone. With this knowledge, it can be predicted that the recovery from 1855 Spindrift Drive may provide enough data to characterize the general lithic trajectories present. Therefore, the following study topics will be addressed.

Study Topics

1. Which technological reduction strategies are present based upon a technological analysis of flaked stone at the property?
2. Which reduction strategies were used to produce which tools? Were these strategies the same or different?
3. Is there variation between flake-based tool kits at sites where shellfish processing is the dominant activity and sites focused upon other subsistence activities from the same time period?
4. How do the technologies identified at SDI-39 and the stages of tool reduction relate to site function and tools recovered at the site?
5. Were the prehistoric lithic tools present within the property manufactured on-site or at another location?
6. Have specific lithic reduction techniques changed through time at SDI-39 (*i.e.*, does large biface reduction predominate during the Paleo Indian Period and nodule-based technologies predominate during the Early Archaic Period and Late Prehistoric Period)? What function did milling technologies serve at SDI-39?

Data Needs

Previous work in the Spindrift neighborhood indicates that flaked lithics and ground stone implements are present throughout SDI-39. Therefore, all lithic materials recovered from 1855 Spindrift Drive will be selected for technological analysis based upon replicative data. In order to address the proposed research questions, the following will be required:

- Collection of an appropriate sample of cores, tools, and debitage;
- Technologically-based analysis of cores, tools, debitage, and milling equipment; and
- Identification of the technological attributes and reduction sequences used to produce the tools.

Settlement and Subsistence

Which settlement and subsistence patterns can be identified at SDI-39 and have these patterns changed over time? Did the pattern of shellfish collection change over time? If so, what influenced the changes: environmental change, population change, technological change, or a combination of these factors? If this site is representative of a continuously occupied habitation site, how does this site relate

to other sites such as base camps, special-use sites, or extractive sites? How did occupation and use of this site contribute to seasonal or year-round occupation of the region in general?

Traditionally, sites such as prehistoric habitation sites are archaeologically differentiated from specialized function sites (*i.e.*, quarries, shellfish processing sites, and milling stations) by the range of materials identified in the assemblage. In addition, there is also a notable amount of variability between habitation sites as a group with regards to site size, artifact density, and diversity of material culture. This observed variation may relate to differences in the quantity of people who occupied a given site, the duration of a site occupation, the frequency with which a site was reused, and the range of activities performed at the site. Identifying such variations in site patterning may help to facilitate the reconstruction of prehistoric social organization and economic adaptations to environmental change. Although many attempts have been made to discern settlement patterns for Late Prehistoric Period sites based upon ethnographic data, the same cannot be said for Early Archaic Period sites in San Diego. The study of earlier settlement systems represented in the archaeological record has gone largely unstudied with the exception of research pertaining to whether coastal Early Archaic Period habitation sites (such as SDI-39) represent permanent settlements or short-term, seasonal camps (Davis 1976) primarily focused upon economic exploitation of shellfish. The data gathered from SDI-39 will help to further illuminate settlement and site type issues for the region and may provide a greater understanding for Early Archaic Period site patterning.

Seasonal site use at SDI-39 is implicit in the availability of fresh water only during the rainy season (winter). However, the attraction of the marine resource may have been strongest during the summer months due to the seasonal availability of preferred resources (Jochim 1976). Seasonality of coastal sites may be determined in two ways. The first is the analysis of fish otoliths, which provide information regarding the season of capture, and hence, the season of site occupation. Since SDI-39 is located near the original La Jolla Estuary, seasonal concentrations of perennially available species must be considered. In addition, the presence of fish that inhabit the nearshore or the bay purely on a seasonal basis, such as some skates, rays, and sharks, must also be considered. For instance, if a fish species is identified that is seasonally sensitive and available near the shore only during a certain period, but the otolith analysis indicates that the fish was captured during a season when it would not normally have been present in the bay, though present offshore, then not only is seasonality addressed, but other activities, including seagoing vessel construction and deep-water fishing, must also be considered.

Invertebrate faunal analysis from SDI-39 may also help to identify environmental change for coastal southern California based upon the rise in sea level that occurred during the early to middle Holocene. This change is believed to have prompted the flooding of coastal valleys and the formation of much of the San Diego lagoon system. The majority of evidence for environmental change in or near lagoons is based upon the analysis of core samples combined with

radiocarbon dates and radiocarbon-dated shellfish samples taken from prehistoric sites near lagoons. Several studies have employed shellfish analysis to explain site patterning and environmental change including Miller (1966), Warren et al. (1961), Warren and Pavesic (1963), Bull and Kaldenberg (1976), and Masters (1988). Environmental studies suggest that circa 3,500 years ago sea levels stabilized, which resulted in an increase in the siltation of the majority of northern San Diego County lagoons during the late Holocene. In contrast, San Diego Bay formed in the early Holocene and stayed open to the ocean throughout the Holocene (Gallegos and Kyle 1988). Taking this into consideration, some prehistoric sites around more northern lagoons may reflect a changing environment and the loss of certain lagoon shellfish and fish species. In contrast, sites reflecting exploitation of bay resources may not reflect a change in the exploitation pattern of shellfish species, type of shellfish, and/or absence of shellfish.

Previous studies within SDI-39 have produced large amounts of shellfish remains and a moderate amount of faunal remains (including marine mammal). If sufficient cultural materials are recovered as a result of the testing program, the proposed recovery should provide enough data to characterize the general subsistence and settlement pattern for the portion of SDI-39 within the 1855 Spindrift Drive Project. Therefore, the following study topics will be addressed as part of the assessment of cultural materials recovered from 1855 Spindrift Drive.

Study Topics

1. Does Site SDI-39 represent both Early Archaic Period and/or Late Prehistoric Period components, and if so, is environmental change and changes in resource exploitation over time reflected in the faunal assemblage?
2. Does Site SDI-39 represent a specialized food processing site or a campsite where a wide range of foods were gathered and processed?
3. As very little is known about Early Archaic Period settlement patterns, what information does SDI-39 provide to add to our prehistoric understanding of site occupation and use patterning?
4. Does the faunal assemblage indicate if SDI-39 was occupied on a seasonal or year-round basis?

Data Needs

The data that is needed from the 1855 Spindrift Drive Project to address the questions about economic exploitation of resources at SDI-39 includes the recovery of floral and faunal remains to permit the reconstruction of diet or dietary practices and preferences of the site occupants. The presence of particular plant and animal species allows for a more complete understanding of the range of environments exploited by the occupants of SDI-39. Available methods for interpreting available data include speciation of vertebrate and invertebrate faunal materials, protein residue analysis, and the subsequent identification of habitats based upon species information.

Based upon previous studies of intact strata, pollen and phytolith preservation may have

been possible and should be considered when intact subsurface levels and/or features are identified. Recovered artifacts can also provide inferential information regarding subsistence exploitation. For example, if plant material is not found, the presence of mortars, manos, pestles, bowls, and metates provides evidence that floral and faunal material were processed at the site. Immunological studies of residues on tools from the site may provide data relating to both the use of tools and to resources exploited. As such, protein residue analysis from recovered ground stone implements and flaked tools may also be required. Often, it is necessary to process relatively large numbers of lithic tools to obtain protein residue information for a given site.

In order to understand settlement patterning for SDI-39, the recovered archaeological assemblage must be viewed in its entirety. It is through the comparison of chronological studies, faunal studies, environmental reconstruction, and prehistoric technology studies that an understanding of settlement patterning of the site will be achieved. In addition, although the number of otoliths commonly found in a midden is very small, if present, otoliths can be identified by species and subjected to a seasonality study. The resulting data can then be assumed to reflect the species sample and, consequently, at a minimum, the seasonality of the site occupation.

5.0 ARCHAEOLOGICAL TEST PLAN

The ATP for the 1855 Spindrift Drive Project is guided by previous research conducted for various studies at nearby properties. The development at 1855 Spindrift Drive may represent sources of direct impacts to portions of SDI-39. This prehistoric village complex has been previously designated by the City as a significant cultural resource based upon CEQA and City of San Diego criteria. In order to comply with the regulations of CEQA and City of San Diego guidelines for the treatment of cultural resources, BFSA prepared this ATP, the goal of which is to identify the locations and characteristics of the cultural deposit within the parcel. This information will be critical to the design and planning for the proposed improvements to the property.

The City of San Diego has determined that SDI-39 is an important prehistoric site. This determination is based upon the widespread presence of human remains within the site in and around the Spindrift neighborhood. According to Pigniolo and Brodie (2009:147), human remains were recovered throughout the Spindrift Drive neighborhood during cultural resource monitoring and data recovery excavations for the Princess Street/Spindrift Drive Undergrounding Project. In addition, Pigniolo and Brodie (2009:147) also noted that previous work by Malcolm Rogers (n.d.) identified human remains within the general vicinity of this project. Therefore, it is assumed that human remains may be present within the property. The ATP must then consider the eventuality that human remains and, potentially, intact burials or cremations, will be encountered during archaeological excavations.

As a concession to the Native American community, the mitigation of significant impacts will include the archaeological processing of all soils to be excavated as part of the construction project. The archaeological processing will consist of the archaeological excavation of all soils containing elements of the cultural deposit and the wet screening of all archaeologically excavated soils to maximize the recovery of artifacts, ecofacts, and any potential human remains. Furthermore, in the event that human remains are identified, the subsequent laboratory processing of materials will include participation of a Native American representative to assist in the review of collections for human remains and associated grave goods.

The ATP for 1855 Spindrift Drive will include tasks focused upon characterizing the potential for buried cultural deposits within the property. Because this property potentially contains elements of a significant prehistoric site (SDI-39), encroachment into the site for development could be limited and require mitigation measures. In order to determine if cultural resources are present, and if those resources are significant, the applicant has requested this archaeological study to comply with City of San Diego environmental review policies. The field investigations will consist of the following:

- The ATP will consist of a series of five shovel test pits (STPs), which will measure 30 centimeters in diameter and will be excavated in decimeter levels to a culturally sterile soil horizon or formational soil. As depicted in Figure 5.0–1, the archaeological STPs will be excavated at select locations within the proposed construction area outside of the footprint of the existing residence.
- The archaeological fieldwork will include detailed mapping and recordation of all cultural elements encountered during the investigations, as required by city guidelines.
- While the STPs will provide baseline information regarding the locations of cultural deposits within the property, the ATP will also include the possible excavation of one-square-meter archaeological test units should cultural deposits be identified. Any additional archaeological tests necessitated by the initial shovel tests will be discussed with the City.
- Any artifacts recovered during the archaeological excavations will be returned to the consultant’s laboratory for analysis. All artifacts will be cleaned and cataloged, and all information will be included in the project database. All artifacts from the project will be prepared for permanent curation at the San Diego Archaeological Center (SDAC); however, if human remains are discovered, the Kumeyaay Cultural Repatriation Committee (KCRC) will request that all human remains and associated grave goods, as defined by the tribal representatives, be repatriated to the KCRC. Further, the location of the repatriation will be determined by the KCRC.
- If archaeological features or deposits are discovered, the discovery will be recorded as part of cultural Site SDI-39 and updated Department of Parks and Recreation (DPR) forms will be registered at the South Coastal Information Center (SCIC) at San Diego State University (SDSU).
- Native American monitors will be included in all aspects of the field investigations.
- A report of findings will be submitted to the City to detail the results of the field investigations. The report will obviously delineate the boundaries of any cultural resources identified within the subject parcel and evaluate the significance of any cultural deposits.
- In the event that human remains are discovered, State of California law and City of San Diego guidelines require that a very specific set of steps be taken to manage the remains. The procedures include contacting the Native American Heritage Commission (NAHC), the county medical examiner, city representatives, and all project managers. In addition, a Native American representative will be present during all laboratory processing dealing with any recovered Native American human remains.

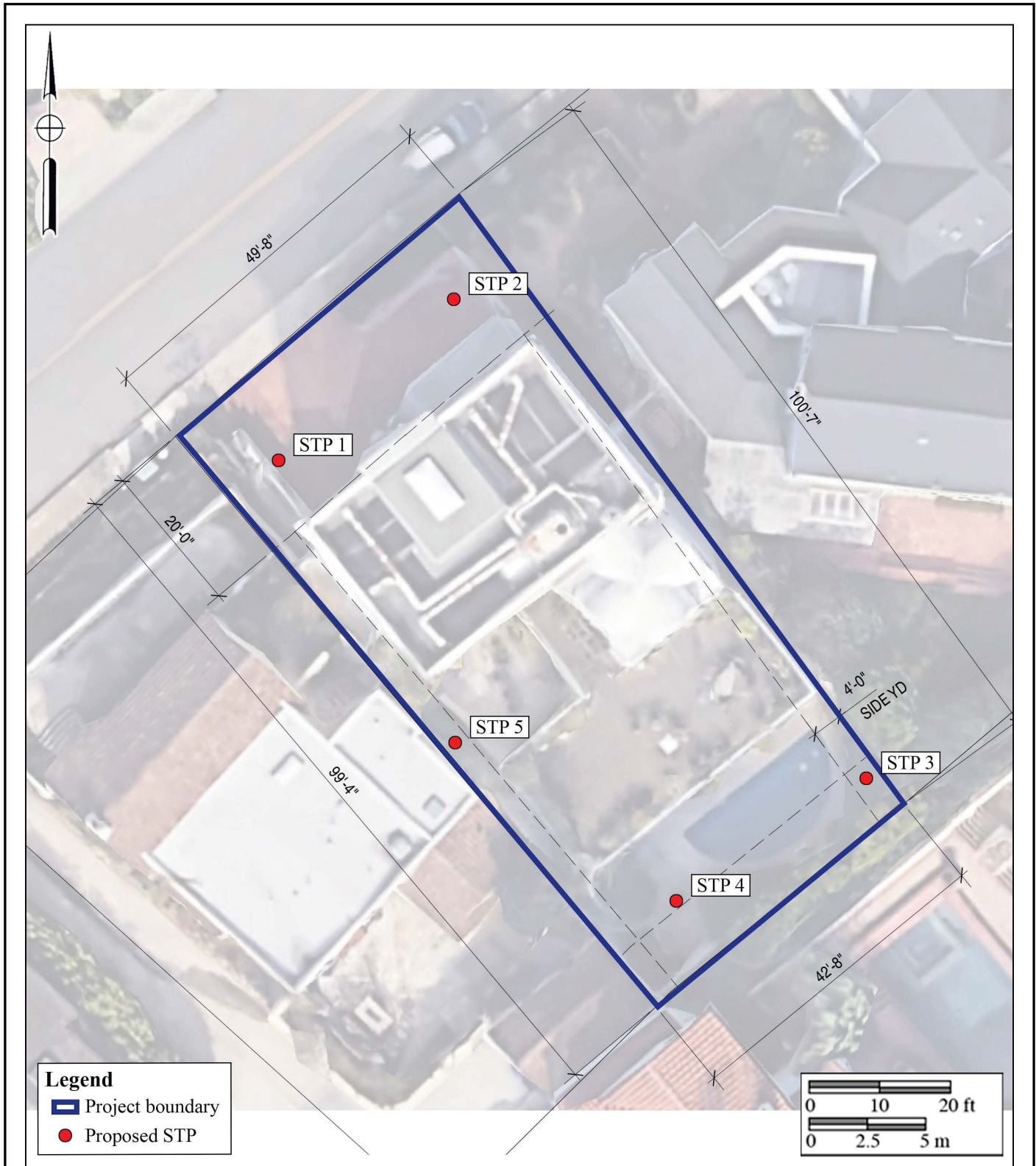


Figure 5.0-1
Proposed Shovel Test Locations
 The 1855 Spindrift Drive Project



5.1 Field Methodology

5.1.1 Subsurface Testing

The testing program should provide sufficient information to determine if cultural resources associated with SDI-39 are present within the subject property. The testing program will avoid any unnecessary excavation of significant midden soil and minimize archaeological impacts to the site. The arrangement of the STPs to be employed to conduct the investigation of the project is presented on Figure 5.0–1. If the STPs produce information indicating the presence of cultural deposits, a subsequent focused testing effort would be recommended to provide information needed to evaluate the significance of the deposit. The tasks to be included in the ATP are:

- Any surface artifacts or concentrations of shell observed on the property will be mapped and recorded. A map will provide the general surface expressions of the site and the site boundaries. All mapping to be conducted will be accomplished using Global Positioning System units and data applicable to the project base maps.
- The field investigation will include the excavation of five STPs at locations identified on Figure 5.0–1. The STPs will serve to identify the limits of any subsurface archaeological deposits within the property. Soil profiles and notes will be completed for the excavations.
- Soils from the excavations will be sifted through one-eighth-inch hardware mesh screens to recover artifacts, which will then be collected to characterize the sample. The quantity of soil sampled will be dependent upon factors of artifact density, disturbance, cobbles and fill, and depth.
- Any cultural materials recovered from archaeological deposits will be returned to the BFSa laboratory for cleaning, cataloging, and analysis. Any artifacts that require special treatment for preservation will be handled in a manner consistent with standard archaeological techniques. All artifacts will be prepared for permanent curation according to the guidelines of the SDAC.
- All information gathered from the fieldwork, laboratory analysis, and research will be incorporated into a technical report following City of San Diego guidelines and requirements. If cultural deposits are observed during the shovel test program, a supplemental test plan will be provided to the City to present the protocol for the expansion of the testing to include test unit excavations to provide a more comprehensive data set from which to evaluate the significance of any cultural deposits. The report will be submitted as a draft to the City for review and comment. A final report will be prepared incorporating all comments that will be submitted to the City at the conclusion of the site study.
- During all field studies conducted for the project, a representative of the Kumeyaay Nation will be on-site to participate in and monitor the archeological program. The Native American monitor may have requests or suggestions regarding the excavation

program, and any concerns expressed to either BFSAs or the City will be considered and discussed.

5.2 Laboratory Analysis

Laboratory analysis of any prehistoric or historic collected material will be initiated by taking an inventory of the collection. The collection will then be subjected to wet screening to remove as much dirt as possible from the artifacts. This process will help to facilitate the laboratory sorting and cataloging process. As noted previously, in the event that human remains are identified in the collection, a Native American representative will be incorporated into the laboratory processing of the collection to assist with the identification of additional remains and any associated grave goods.

5.2.1 Artifact Sorting and Analysis

The sorting technique will include the sorting, identification, and cataloging of all materials returned to the BFSAs laboratory. Bulk items such as fragments of concrete, slag, and nondescript glass and metal will be weighed and cataloged en masse, by material type, for each level. All remaining artifacts will be separated by class and type, identified to the most specific level possible, and sorted and cataloged by totals, materials, condition, weight, provenience, and unique artifact identification numbers.

If prehistoric lithic artifacts are recovered from the project, they will be subjected to an in-house analysis that will include recordation of lithic material, critical measurements and weight, and inspection for evidence of use wear, retouch, patination, or stains. The recovered flakes will be subjected to technologically-based lithic studies. Non-lithic materials, such as ecofacts (shell, bone, or wood), will be subjected to specialized analyses. The laboratory analysis of the column samples will include flotation procedures to remove seeds and other microfaunal remains from the soil, followed by screening the remainder through a one-sixteenth-inch mesh sieve. The recovered materials, such as animal bone, fish bone, seeds, and charred plant remains, will be sorted and subjected to further analysis by the appropriate personnel. Other specialized studies, which will be conducted if the appropriate materials are encountered, include marine shell species identification, faunal analysis, otolith analysis (for seasonality), radiocarbon dating, obsidian sourcing and hydration, and blood residue and phytolith studies.

5.3 Provisions for the Discovery of Human Remains

If human remains are encountered, State Health and Safety Code Section 7050.5 states that no further disturbance shall occur until the county medical examiner has made a determination of origin and disposition pursuant to Public Resources Code Section 5097.98. The medical examiner must be notified of the find immediately. If the remains are determined to be prehistoric, the medical examiner would notify the NAHC, who would determine and notify a Most Likely Descendant (MLD). With the permission of the landowner or his/her authorized representative,

the MLD may inspect the site of the discovery. The MLD shall complete the inspection within 24 hours of notification by the NAHC and may recommend scientific removal and nondestructive analysis of human remains and items associated with Native American burials. Adherence to State Health and Safety Code Section 7050.5 would occur as a matter of course to ensure that impacts are less than significant.

5.4 Recordation and Curation

Any cultural resources identified as part of the testing program will be recorded on the appropriate DPR site record forms and submitted to the SCIC at SDSU. After cataloging, identification, and analysis, each cataloged entry will be marked with the appropriate provenience and catalog information. The collection will be prepared for permanent storage in compliance with the standards promoted by state and federal museum guidelines. Any prehistoric cultural materials recovered from the testing program excavations will be curated at the SDAC, unless otherwise repatriated to the KCRC due to the identification of human remains. Upon approval from the City, the transfer of the collection will be executed. Copies of all data and the final report will be included with the curated artifact collection. All notes, photographs, and documents associated with the project will be housed at the BFSA office in Poway, California.

6.0 BIBLIOGRAPHY

Bada, J.L., R.A. Schroeder, and G.F. Carter

- 1974 New Evidence for the Antiquity of Man in North America deduced from Aspartic Acid Racemization. *Science* 213:1003–1005.

Bancroft, Hubert Howe

- 1886 *History of California* (Vol. II). The History Company, San Francisco.

Beauchamp, R. Mitchel

- 1986 *A Flora of San Diego County, California*. Sweetwater River Press, National City, California.

Blick, J.D.

- 1976 Agriculture in San Diego County. In *San Diego – An Introduction to the Area*, edited by Philip Pryde. Kendall/Hunt Publishing Company, Dubuque, Iowa.

Bowman, R.H., A.A. House, G. Kester, D.D. Estrada, J.K. Wachtell, G.L. Anderson, and P.V. Campo

- 1973 Soil Survey of the San Diego Area, California. Part I. Soil Conservation Service, U.S. Department of Agriculture, Washington, D.C.

Brandes, Ray, Scott Moomjian, and Jacquelyn Landis

- 1999 Historical and Architectural Report for 1905 Spindrift Drive, La Jolla, California. Unpublished report on file with City of San Diego Development Services Department.

Bull, Charles S.

- 1983 Shaking the Foundations: The Evidence for San Diego Prehistory. *Cultural Resource Management Casual Papers* 1(3). Department of Anthropology, San Diego State University.

- 1987 A New Proposal: Some Suggestions for San Diego Prehistory. In *San Dieguito – La Jolla: Chronology and Controversy*, edited by Dennis Gallegos. *San Diego County Archaeological Society Research Paper* 1.

Bull, Charles and Russell Kaldenberg

- 1976 Archaeological Investigations at the World Medical Foundation. Unpublished report on file at the South Coastal Information Center at San Diego State University, San Diego, California.

Cardenas, D. Sean

- 1986 Avocado Highlands: An Inland Late La Jolla and Preceramic Yuman Site from Southern San Diego County. *Cultural Resource Management Casual Paper* 2(2). Department of Anthropology, San Diego State University.

Carrico, Richard L. and Clifford V.F. Taylor

- 1983 Excavation of a Portion of Ystagua: A Coastal Valley Ipai Settlement. Environmental Impact Report on file at the City of San Diego, Environmental Quality Division.

Carter, George F.

- 1957 *Pleistocene Man at San Diego*. The Johns Hopkins Press, Baltimore.

- 1980 *Earlier Than You Think: A Personal View of Man in America*. College Station. Texas A and M University Press.

Castillo, Carlos and Otto F. Bond

- 1975 *The University of Chicago Spanish Dictionary* (Pocket Book edition). Simon and Schuster, New York.

Caughey, John W.

- 1970 *California: A Remarkable State's Life History* (Third Edition). Prentice-Hall, Englewood Cliffs, New Jersey.

Chapman, Charles E.

- 1921 *A History of California: The Spanish Period*. The Macmillan Company, New York.

Chartkoff, Joseph L. and Kerry Kona Chartkoff

- 1984 *The Archaeology of California*. Stanford University Press, Stanford, California.

Cooley, Theodore

- 1982 *Analysis and Interpretation of CA-LAN-844: A Prehistoric Quarry Workshop and Factory in the Upper Palos Verdes Hills, Los Angeles County, California*. Unpublished Master's Thesis, Department of Anthropology, California State University, Los Angeles, California.

Crouch, Herbert

- 1915 Reminiscences, 1868-1915. Unpublished manuscript, California Room, San Diego Public Library; and SDHS Library, Serra Museum.

Davis, Emma Lou

- 1976 Two Dated La Jolla Burials and Their Place in California Prehistory: A Review. *Pacific Coast Archaeological Society Quarterly* 12(4):1-44.

Davis, E.L., C.W. Brott, and D.L. Weide

- 1969 The Western Lithic Co-Tradition. *San Diego Museum Papers* 6. San Diego Museum of Man, San Diego.

Elliott, Wallace W.

- 1883 *History of San Bernardino and San Diego Counties* (1965 Edition). Riverside Museum Press, Riverside, California.

Engelhardt, Zephryn

1920 *San Diego Mission*. James M. Barry Company, San Francisco.

Ezell, Paul H.

1983 A New Look at the San Dieguito Culture. *Casual Papers* 1(3). San Diego State University, Cultural Resource Management Center.

1987 The Harris Site – An Atypical San Dieguito Site, or am I Beating a Dead Horse? In *San Dieguito – La Jolla: Chronology and Controversy*, edited by Dennis Gallegos, pp. 15-22. *San Diego County Archaeological Society Research Paper* 1.

Flenniken, J. Jeffrey, Jeffrey A. Markos, and Terry L. Ozbun

1993 Battered Implements: Mano and Metate Resharpener Tools from SDI-10148. In *Lithic Analysts Research Report* (33). Pullman, Washington.

Gallegos, Dennis R.

1987 A Review and Synthesis of Environmental and Cultural Material for the Batiquitos Lagoon Region. In *San Dieguito – La Jolla: Chronology and Controversy*, edited by D. Gallegos. *San Diego County Archaeological Society Research Paper* 1:23–34.

1991 Antiquity and Adaptation at Agua Hedionda, Carlsbad, California. *Hunter-Gatherers of Early Holocene Coastal California*, edited by Jon M. Erlandson and Roger H. Colten, pp. 19–41. *Perspectives in California Archaeology*, Vol. 1. Institute of Archaeology, University of California, Los Angeles.

Gallegos, Dennis R. and Carolyn E. Kyle

1988 Five Thousand Years of Maritime Subsistence at Ballast Point Prehistoric Site SDI-48 (W-164) San Diego, California. Unpublished report on file at the South Coastal Information Center at San Diego State University, San Diego, California.

Gallegos, Dennis R., J. Jeffrey Flenniken, Tracy A. Stropes, Monica Guerrero, and Brian Hatoff

2002 Cultural Resource Monitoring and Data Recovery Program for CA-SDI-7215, Otay Mesa Generating Project, San Diego County, California. Unpublished report on file at the South Coastal Information Center at San Diego State University, San Diego, California.

2003 Cultural Resource Data Recovery Program for CA-SDI-9975, Otay Mesa, San Diego County, California. Unpublished report on file at the South Coastal Information Center at San Diego State University, San Diego, California.

Gordinier, Jerry G.

1966 *Problems of Settlement in the San Diego Foothills*. Unpublished Master's thesis, San Diego State College, San Diego.

Heiges, Harvey

- 1976 *The Economic Base of San Diego County. In San Diego – An Introduction to the Region*, edited by Philip Pryde. Kendall/Hunt Publishing Company, Dubuque, Iowa.

Jochim, Michael A.

- 1976 *Hunter-Gatherer Subsistence and Settlement – A Predictive Model*. Studies in Archaeology. Academic Press, New York.

Kennedy, Michael P.

- 1975 *Geology of the Southern San Diego Metropolitan Area, California: Section A, Western San Diego Metropolitan Area*. Bulletin 200. California Division of Mines and Geology, Williams & Heintz Map Corporation, Washington D.C.

Kyle, Carolyn E. and Dennis R. Gallegos

- 1993 *Data Recovery Program for a Portion of Prehistoric Site CA-SDI-10148, East Mission Gorge Pump Station and Force Main, San Diego, California*. Unpublished report on file at the South Coastal Information Center at San Diego State University, San Diego, California.

Kyle, Carolyn, Adella Schroth, and Dennis R. Gallegos

- 1990 *Early Period Occupation at the Kuebler Ranch Site SDI-8,654 Otay Mesa, San Diego County, California*. Prepared for County of San Diego, Department of Public Works by ERCE Environmental and Energy Services Co., San Diego.

Masters, Patricia M.

- 1988 *Paleo-Environmental Reconstruction of San Diego Bay, 10,000 Years BP to Present. In Five Thousand Years of Maritime Subsistence at Ballast Point Prehistoric Site SDI-48 (W-164) San Diego, California*, edited by Dennis Gallegos, pp. 4.1–4.22. Unpublished report on file at the South Coastal Information Center at San Diego State University, San Diego, California.

Miller, Jaquelin Neva

- 1966 *The Present and Past Molluscan Faunas and Environments of Four Southern California Coastal Lagoons*. Master's thesis, Scripps Institution of Oceanography, University of California at San Diego.

Minshall, Herbert L.

- 1976 *The Broken Stones*. Copley Books, San Diego.

- 1989 *Buchanan Canyon: Ancient Human Presence in the Americas*. Slawson Communications, San Marcos, California.

Moratto, Michael J.

- 1984 *California Archaeology*. Academic Press, New York.

Moriarty, James R., III

- 1965 Cosmogony, Rituals, and Medical Practice Among the Diegueño Indians of Southern California. *Anthropological Journal of Canada* 3(3):2–16.
- 1966 Culture Phase Divisions Suggested by Topological Change Coordinated with Stratigraphically Controlled Radiocarbon Dating in San Diego. *Anthropological Journal of Canada* 4(4):20–30.
- 1967 Transitional Pre-Desert Phase in San Diego, California. *Science* 155(3762):553–336. Scripps Institution – UCSD Contribution No. 2278.
- 1969 San Dieguito Complex: Suggested Environmental and Cultural Relationships. *Anthropological Journal of Canada* 7(3):2–18.

Moriarty, James Robert, III and Herbert L. Minshall

- 1972 A New Pre-Desert Site Discovered near Texas Street. *Anthropological Journal of Canada* 10(3):10–13.

Moyer, Cecil C.

- 1969 *Historic Ranchos of San Diego*, edited by Richard F. Pourade. Union-Tribune Publishing Company, San Diego.

Palou, Fray Francisco

- 1926 *Historical Memoirs of New California*, edited by Herbert Eugene Bolton (4 Volumes). University of California Press, Berkeley.

Pierson, Larry J.

- 2001 Results of a Modified HABS Documentation and Construction Monitoring for the Jack White Residence Project. Brian F. Smith and Associates. Unpublished report on file at the South Coastal Information Center at San Diego State University, San Diego, California.

Pigniolo, Andrew

- 1992 *Distribution of Piedra de Lumbre ‘Chert’ and Hunter-Gatherer Mobility and Exchange in Southern California*. Unpublished Master’s Thesis, Department of Anthropology, San Diego State University, San Diego, California.

Pigniolo, Andrew R. and Natalie Brodie

- 2009 Preliminary Draft Cultural Resource Monitoring and Data Recovery for the Princess Street/Spindrift Drive Underground Utility District: The Spindrift Site (CA-SDI-39/17372, SDM-W-1). Available at Laguna Mountain Environmental, Inc.

Pitt, Leonard

- 1966 *The Decline of the Californios*. University of California Press, Los Angeles.

Pourade, Richard F.

1967 *The Rising Tide: Southern California in the Twenties and Thirties*. Union-Tribune Publishing Company, San Diego.

Price, Glenn W.

1967 *Origins of the War with Mexico: The Polk-Stockton Intrigue*. University of Texas Press, Austin.

Randolph, Howard Stelle Fitz

1955 *La Jolla Year by Year*. Library Association of La Jolla, California.

Raven-Jennings, Shelly and Brian F. Smith

1999a Final Report for Site SDI-8330/W-240 "Scraper Hill," Escondido, California. Unpublished report on file at the South Coastal Information Center at San Diego State University, San Diego, California.

1999b Report of Excavations at CA-SDI-4608: Subsistence and Technology Transitions during the Mid-to-Late Holocene in San Diego County (Scripps Poway Parkway). Unpublished report on file at the South Coastal Information Center at San Diego State University, San Diego, California.

Reeves, Brian O.K.

1985 Early Man in the Americas: Who, When, and Why. In *Woman, Poet, Scientist: Essays in New World Anthropology Honoring Dr. Emma Louise Davis*, edited by Thomas C. Blackburn, pp. 79–104. *Ballena Press Anthropological Papers* 29. Los Altos, California.

Reeves, Brian, John M.D. Pohl, and Jason W. Smith.

1986 The Mission Ridge Site and the Texas Street Question. In *New Evidence for the Pleistocene Peopling of the Americas*, edited by Alan Lyle Bryan, pp. 65–80.

Robbins-Wade, Mary Judith

1990 *Prehistoric Settlement Pattern of Otay Mesa San Diego County, California*. Unpublished Master's thesis, Department of Anthropology, San Diego State University, San Diego, California.

Robinson, W.W.

1948 *Land in California*. University of California Press, Berkeley.

Rogers, Malcolm

1939 Early Lithic Industries of the Lower Basin of the Colorado River and Adjacent Desert Areas. In *San Diego Museum Papers* (No. 3 – 1989 printing). San Diego Museum of Man, San Diego, California.

- 1966 *Ancient Hunters of the Far West*, edited with contributions by H.M. Worthington, E.L. Davis, and Clark W. Brott. Union Tribune Publishing Company, San Diego.

Rolle, Andrew F.

- 1969 *California: A History* (Second Edition). Thomas Y. Crowell Company, New York.

Salley, Harold E.

- 1977 *History of California Post Offices 1849-1976*. Published Privately. La Mesa, California.

San Diego Union

- 1868 San Diego history. 6 February. San Diego, California.

- 1869 San Diego history. 31 March. San Diego, California.

- 1870 San Diego history. 10 November. San Diego, California.

- 1872 San Diego history. 2 January. San Diego, California.

- 1932 San Diego history. 9 August. San Diego, California.

Sawyer, John

- 1995 *Manual of California Vegetation*. California Native Plant Society, Sacramento.

Schroth, Adella B. and J. Jeffrey Flenniken

- 1997 Intersite Lithic Studies. In *Route 905 Cultural Resources Test Report for Sites CA-SDI-6941, Loci G and Y; CA-SDI-11423, and CA-SDI-11424*, edited by Carolyn E. Kyle, Adella B. Schroth, and Dennis R. Gallegos, Chapter 8. Unpublished report on file at the South Coastal Information Center at San Diego State University, San Diego, California.

Shipek, Florence

- 1977 *A Strategy for Change: The Luiseño of Southern California*. Unpublished Doctoral dissertation on file at the University of Hawaii.

Shumway, George, Carl L. Hubbs, and James R. Moriarty

- 1961 Scripps Estate Site, San Diego, California: A La Jolla Site Dated 5,460-7,370 Years Before the Present. *Annals of the New York Academy of Sciences* 93(3).

Smith, Brian F.

- 1996 The Results of a Cultural Resource Study at the 4S Ranch. Unpublished report on file at the South Coastal Information Center at San Diego State University, San Diego, California.

Smith, Brian F. and James R. Moriarty

- 1983 An Archaeological Evaluation of a Drainage Channel Project at the South Sorrento Business Park. Environmental Impact Report on file at the City of San Diego, San Diego, California.
- 1985a The Archaeological Excavations at Batiquitos Pointe and Batiquitos Bluffs. Unpublished report on file at the South Coastal Information Center at San Diego State University, San Diego, California.
- 1985b The Archaeological Excavations at Site W-20, Sierra Del Mar. Unpublished report on file at the South Coastal Information Center at San Diego State University, San Diego, California.

Stropes, Tracy A.

- 2007 *Nodule Industries of North Coastal San Diego: Understanding Change and Stasis in 10,000 Years of Lithic Technology*. Thesis/dissertation submitted to San Diego State University, San Diego, California.

True, Delbert L.

- 1958 An Early Complex in San Diego County, California. *American Antiquity* 23(3).
- 1966 *Archaeological Differentiation of the Shoshonean and Yuman Speaking Groups in Southern California*. Unpublished doctoral dissertation, University of California at Los Angeles.
- 1970 Investigations of a Late Prehistoric Complex in Cuyamaca Rancho State Park, San Diego County, California. *University of California, Los Angeles Archaeological Survey Monographs* (1).
- 1980 The Pauma Complex in Northern San Diego County: 1978. *Journal of New World Archaeology* 3(4):1–39
- 1986 Molpa, a Late Prehistoric Site in Northern San Diego County: The San Luis Rey Complex, 1983. In *Symposium: A New Look at Some Old Sites*, edited by Gary S. Breschini and Trudy Haversat, pp. 29–36. Coyote Press, Salinas.

True, D.L. and Eleanor Beemer

- 1982 Two Milling Stone Inventories from Northern San Diego County, California. *Journal of California and Great Basin Anthropology* 4:233–261.

True, D.L. and R. Pankey

- 1985 Radiocarbon Dates for the Pauma Complex Component at the Pankey Site, Northern San Diego County, California. *Journal of California and Great Basin Anthropology* 7:240–244.

Van Dyke, Theodore

1886 *Southern California*. Fords, Howard and Hulbert.

Warren, Claude N.

1964 *Cultural Change and Continuity on the San Diego Coast*. Unpublished Doctoral dissertation on file at the University of California, Los Angeles.

1966 The San Dieguito Type Site: Malcolm J. Roger's 1938 Excavation on the San Dieguito River. *San Diego Museum Papers* 6.

Warren, Claude N. and Michael G. Pavesic

1963 Shell Midden Analysis of Site SDI-603 and Ecological Implications for Cultural Development of Batiquitos Lagoon, San Diego County, Los Angeles. University of California, Los Angeles, Archaeological Survey Annual Report, 1960-1961:246–338.

Warren, Claude N., Delbert L. True and Ardith A. Eudey

1961 Early Gathering Complexes of Western San Diego County: Results and Interpretations of an Archaeological Survey. *Archaeological Survey Annual Report* 1960-1961.

Warren, Claude L., Gretchen Siegler, and Frank Dittmer

1998 Paleoindian and Early Archaic Periods. In Prehistoric and Historic Archaeology of Metropolitan San Diego: A Historical Properties Background Study (draft). Prepared for and on file, ASM Affiliates, Inc., San Diego, California.

Waugh, Georgie

1986 *Intensification and Land-use: Archaeological Indications of Transition and Transformation in a Late Prehistoric Complex in Southern California*. Unpublished Doctoral dissertation on file at the University of California, Davis.

APPENDIX A

Resumes of Key Personnel

Tracy A. Stropes, MA, RPA

Vice President of Cultural Resources/ Principal Archaeologist
BFSA Environmental Services, a Perennial Company
14010 Poway Road • Suite A •
Phone: (858) 484-0915 • Email: tstropes@bfsa.perennialenv.com



Education

| | |
|---|-------------|
| Master of Arts, Anthropology, San Diego State University, California | 2007 |
| Bachelor of Science, Anthropology, University of California, Riverside | 2000 |

Professional Memberships

Register of Professional Archaeologists
Society for California Archaeology
Archaeological Institute of America
Association of Oregon Archaeologists

Experience

Vice President of Cultural Resources/Principal Archaeologist
BFSA Environmental Services, a Perennial Company
Poway, California

March 2009–Present

Tracy A. Stropes has over 33 years of experience in cultural resource management, with experience in project management, report authorship, lithic analysis, laboratory management, Native American consultation, and technical report editing for numerous projects throughout the western United States. Mr. Stropes has conducted cultural resource surveys, archaeological site testing and evaluations for National Register eligibility and CEQA compliance, mitigation of resources through data recovery for archaeological sites, budget and report preparation, and direction of crews of all sizes for projects ranging in duration from a single-day site visit to multiple years. Mr. Stropes is a Registered Professional Archaeologist (RPA) and is on the list of archaeological consultants qualified to conduct archaeological investigations in the city and county of San Diego, county of Riverside, State of Oregon, State of Arizona, and on Arizona and California BLM lands. He has served as project archaeologist for hundreds of projects and composed data recovery and preservation programs for sites throughout the western United States for both CEQA- and NEPA-level compliance.

Archaeological Principal Investigator
TRC Solutions

June 2008–February 2009
Irvine, California

Cultural resource segment of Natural Sciences and Permitting Division; management of archaeological investigations for private companies and local, state, and federal agencies, personnel management, field and laboratory supervision, lithic analysis, Native American consultation and reporting, NRHP and CEQA site evaluations, and authoring/coauthoring cultural resource management reports.

**Principal Investigator and Project Archaeologist
Archaeological Resource Analysts**

**June 2006–May 2008
Oceanside, California**

As a sub consultant, served as Principal Investigator and Project Archaeologist for several projects for SRS Inc., including field direction, project and personnel management, lab analysis, and authorship of company reports.

**Project Archaeologist
Gallegos & Associates**

**September 1996–June 2006
Carlsbad, California**

Project management, laboratory management, lithic analysis, field direction, Native American consultation, report authorship/technical editing, and composition of several data recovery/preservation programs for both CEQA and NEPA level compliance.

**Project Archaeologist
Macko Inc.**

**September 1993–September 1996
Santa Ana, California**

Project management, laboratory management, lithic analysis, field supervision, and report authorship/technical editing.

**Archaeological Field Technician
Chambers Group Inc.**

**January 1993–September 1993
Irvine, California**

Archaeological excavation, surveying, monitoring, wet screen facilities management, and project logistics.

**Archaeological Field Technician
John Minch and Associates**

**May 1992–September 1992
San Juan Capistrano, California**

Archaeological excavation, surveying, monitoring, wet screen facilities management, and project logistics.

Selected Reports/Papers

Principal Author

- 2023 A Section 106 (NHPA) Historic Resource Study for the Oak Creek Canyon Project, City of Wildomar, Riverside County, California. Prepared for Ambient Pacific OCC, LLC.
- 2023 A Section 106 (NHPA) Historic Resource Study for The Questhaven 76 Project, San Diego County, California (APNs 223-070-007, 223-070-008, and 223-080-046). Prepared for ColRich.
- 2023 A Phase I Cultural Resources Survey for the Bermuda Dunes Self Storage Project, PAR220053, Riverside County, California. Prepared for FAMA Dairy.
- 2023 A Cultural Resources Study for 4846 Pacifica Drive, City of San Diego. Prepared for Colliers International.
- 2023 A Section 106 (NHPA) Historical Resources Study for the Maison's Sierra Project, City of Lancaster, California (Tract No. 27099). Prepared for Ravello Holdings, Inc.

- 2023 Cultural Resource Survey and Evaluation Program for the Omni Hotel Driving Range/Parking Lot Project, City of Carlsbad, California. Prepared for TRT Holdings, Inc.
- 2022 A Class III Historic Resources Study for the Anna Avenue Project for Section 106 Compliance, City of San Diego, California. Prepared for John Smith Earthworks, Inc.
- 2022 A Section 106 (NHPA) Historic Resource Study for the Grand Avenue Project, Riverside County, California (APN 379-060-005). Prepared for TriPointe Homes
- 2022 A Section 106 (NHPA) Historic Resources Study for the Boulder Springs North Project, Riverside County, California (TTMs 31243, 31244, and 31245; APNs 321-020-027, -028, -029, and -030 and 321-130-047 and -048). Prepared for KB Home.
- 2022 A Section 106 (NHPA) Historical Resources Study for the Alpine Rancho Palo Verde Project, San Diego County, California (SPL-219-00698-CJA). Prepared for Schindler Real Estate Services, Inc.
- 2022 A Section 106 (NHPA) Historic Resource Study for the Cumming Ranch Project, San Diego County, California (APNs 282-010-08, -30, -34, and -43; 283-011-06; 283-021-01 and -02; 283-022-02; 283-041-25 and -26; and 283-051-01). Prepared for 805 Properties.
- 2021 A Section 106 (NHPA) Historic Resources Study for the Gatchell Road Project, San Diego County, California (Project No. 100203). Prepared for the National Park Service.
- 2021 A Section 106 (NHPA) Historic Resources Study for Site CA-SDI-11,934/H, San Diego County, California (APN 532-520-15). Prepared for the National Park Service.
- 2021 A Section 106 (NHPA) Historical Resources Study for the Renaissance Ranch Project, Riverside County, California (SPL-2004-01431-JPL). Prepared for Richland Developers, Inc.
- 2021 A Phase I Cultural Resource Survey for the Coppel Remodel & Addition Project, La Jolla, California. Prepared for Marengo Morton Architects, Inc.
- 2021 A Section 106 (NHPA) Historic Resources Study for CAB-20-1, San Diego County, California (APN 532-520-15). Prepared for the National Park Service.
- 2021 Cultural Resources Study for 7951 Paseo Del Ocaso, La Jolla, California. Prepared for Aidlin Darling Design.
- 2021 Cultural Resources Study for the Secret Hills Ranch Project, San Diego County, California (PDS2020-LDGRMJ-30253, APN 520-060-18)
- 2021 Cultural Resources Study for the UCLA Cedar Suites and Willow Creek Staff Housing Project, Lake Arrowhead, San Bernardino County, California. Prepared for T&B Planning, Inc.
- 2021 A Section 106 (NHPA) Historic Resources Study for CA-SDI-13,884, San Diego County, California (APN 532-520-13). Prepared for the National Park Service.
- 2021 A Cultural Resources Study for the UCLA Glamping Facility Project, Lake Arrowhead, San Bernardino County, California. Prepared for UCLA Capital Programs.
- 2021 Archaeological Test Results for 2596 Chalcedony Street, San Diego, California. Prepared for Colliers International.

- 2021 Cultural Resources Study for the 12247 Elliott Avenue Project, Los Angeles County, California. Prepared for EPD Solutions.
- 2021 A Section 106 (NHPA) Historic Resources Study for the Roquet Ranch Project, City of Colton, San Bernardino County, California (Tentative Tract Map No. 19983; APNs 116-701-101, -102, 116-702-101, -105, -121, -122, -123, and 116-703-118). Prepared for Sunmeadows, LLC.
- 2020 A Section 106 (NHPA) Historical Resources Study for the Ocean Breeze Ranch Project, Bonsall, San Diego County, California (SPL-2020-00176). Prepared for Ocean Breeze Ranch, LLC.
- 2020 Cultural Resource Monitoring Report for the Encinitas Beach Hotel Project, Encinitas, California. Prepared for JMI Realty, LLC
- 2020 A Section 106 (NHPA) Historic Resources Study for the Pacifica Estates Project, Fallbrook, San Diego County, California. Prepared for Jose Islas.
- 2020 A Section 106 (NHPA) Historic Resources Study for the Hidden Valley Ranch Project, SPL-2004-01124, City of Poway, California. Prepared for Barbara Malone.
- 2020 A Section 106 (NHPA) Historic Resource Study for The Farms in Poway Project, Poway, San Diego County, California (APNs 273-110-070, -080, and -180). Prepared for Kevin McNamara.
- 2020 A Phase I and II Cultural Resources Assessment for the Hansen Lot Split Project, TPM 37655, Riverside County, California. Prepared for Forest Hansen.
- 2020 Cultural Resources Study for the West Coast Cold Storage Project, City of Jurupa Valley, County of Riverside (APNs 178-140-010 and -018). Prepared for
- 2020 Cultural Resources Study for the 340 East Bradley Avenue Project, San Diego County, California (PDS2021-LDGRMJ-30346). Prepared for A N1-Mart, LLC.
- 2019 Archaeological Monitoring Report for the Atwell Phase 1A Project (formerly Butterfield Specific Plan), City of Banning, Riverside County, California. Prepared for Pardee Homes.
- 2019 A Cultural Resource Assessment for the Glen Circle Project, Poway, California. Prepared for MDD Homes.
- 2019 Cultural Resources Survey for the Highlands at Warner Springs and Off-Site Fire Access Road Project, Warner Springs, San Diego County, California. Prepared for Warner Springs Estates, LLC.
- 2019 A Cultural Resources Assessment for the 8801 East Marginal Way Project, City of Tukwila, King County, Washington. Prepared for CenterPoint Properties Trust.
- 2019 Cultural Resource Monitoring Report for the 7980 Park Village Road Emergency Repair Project, San Diego, California. Prepared for Orion Construction Corporation.
- 2019 Mitigation Monitoring and Reporting Program for the Harmony Grove Village, San Diego County, California. Prepared for Lennar – San Diego Division.
- 2019 Cultural Resource Monitoring Report for the Price-Cohen Residence Project, 2045 Lowry Place, La Jolla, California 92037. Prepared for Lena Price and Thomas Cohen.
- 2019 A Section 106 (NHPA) Historic Resources Study for the Melrose Drive Widening Project, City of Oceanside, California. Prepared for California West Communities.

- 2019 A Cultural Resources Study for the Majestic Chino Heritage Project, City of Chino, San Bernardino County, California. Prepared for T&B Planning, Inc.
- 2019 Cultural Resources Study for the Ocean Breeze Ranch Project, Bonsall, San Diego County, California. Prepared for Ocean Breeze Ranch, LLC.
- 2019 Mitigation Monitoring and Reporting Program for the Arthofer Residence Project, 1890 Viking Way, La Jolla, California. Prepared for Frank and Sharon Arthofer.
- 2019 A Phase I and II Cultural Resources Assessment for the Greentree Ranch Project, Riverside County, California. Prepared for T&B Planning, Inc.
- 2018 A Section 106 (NHPA) Historic Resources Study for the Escondido Country Club Project, SPL-2018-00135-CJA, City of Escondido, California. Prepared for New Urban West, Inc.
- 2018 A Phase I Cultural Resources Study for the North County Plaza Project, Carlsbad, California. Prepared for Planning Systems, Inc.
- 2018 Cultural Resources Addendum Report for the Ivey Palms Project, Thousand Palms, Riverside, California. Prepared for T&B Planning, Inc.
- 2017 Cultural Resource Monitoring Report for the Altman Residence Project, 9696 La Jolla Farms Road, La Jolla, California 92037. Prepared for Steve and Lisa Altman.
- 2017 Cultural Resources Study for the Escondido Country Club Project, City of Escondido, California. Prepared for New Urban West, Inc.
- 2017 A Class III Archaeological Study for the Tract 28859 Project for Section 106 Compliance. Prepared for Menifee 28859, LLC.
- 2016 A Section 106 (NHPA) Historic Resources Study for the Lake Ranch Project, TR 36730, Riverside County, California.
- 2016 Mitigation Monitoring and Reporting Program for the Imperial Beach Bikeway Village Project, 536 13th Street and 535 Florence Street, Imperial Beach, California. Prepared for Bikeway Village, LLC.
- 2015 Cultural Resource Data Recovery and Mitigation Monitoring Program for Site SDI-10,237 Locus F, Evely Subdivision Project, El Cajon, California. Prepared for Shea Homes.
- 2015 A Class III Historic Resource Study for the Miramar Clearwell Improvements Project, San Diego, California. Prepared for Global Environmental Permitting, Inc.
- 2015 A Class III Historic Resource Study for the College Boulevard Project, Carlsbad, California. Prepared for Bent West, LLC.
- 2015 A Class III Archaeological Study for the Parkside Project for Section 106 Compliance, Riverside County, California. Prepared for Lennar Corporation.
- 2015 A Cultural Resource Assessment for the Zhao Residence Project, Poway, California (275-240-66). Prepared for Pacific Sotheby's International Realty.
- 2014 Phase I Cultural Resources Survey for the Utah Trail Project, County of San Bernardino, California (APNs 621-281-22 through 621-281-25). Prepared for Ecos Energy, LLC.

- 2014 Phase I Archaeological Assessment for the Sky Canyon Project (PP25309), Riverside County, California. Prepared for Rocky Snider California Project Management Office.
- 2014 Phase I Cultural Resources Survey for the Shoshone Valley Road Project, County of San Bernardino, California (APNs 613-233-01, -02, -03, -04, -27, -28, -29, and -30). Prepared for Ecos Energy, LLC.
- 2014 Phase I Cultural Resources Survey for the Nuevo 055 Project, Community of Nuevo, County of Riverside. Prepared for Ecos Energy, LLC.
- 2014 A Phase I Cultural Resource Study for the Bourgeois Project, Poway, California. Prepared for Bill Yen & Associates, Inc.
- 2014 A Cultural Resources Survey for the Aliso Canyon Major Subdivision Project, Rancho Santa Fe, San Diego County, California. Prepared for Zephyr Partners.
- 2014 Cultural Resource Monitoring Report for the Sewer Group 723 Project, San Diego, California. Prepared for Ortiz Corporation.
- 2013 A Phase I Cultural Resource Study for the Rogers Tierra Bonita Project, Poway, California. Prepared for John D. Fitch & Associates.
- 2013 A Cultural Resource Assessment Update for the Girard Townhome Project, TR 35477, Riverside County, California. Prepared for G8 Development, Inc.
- 2013 Phase I Archaeological Assessment for the Ridge Park Project, City of Temecula, California. Prepared for Ambient Communities.
- 2013 A Phase I and Phase II Cultural Resource Study for the Citrus Heights/Fairway Drive Project, Riverside County, California. Prepared for CV Communities.
- 2013 Phase I Archaeological Assessment for the Bixby Highgrove Project (TTM 36437), Riverside County, California. Prepared for T&B Planning, Inc.
- 2013 A Class III Cultural Resources Study for the Ramona Ranch Affordable Housing Project for Section 106 Compliance, San Diego County, California. Prepared for AMCAL Multi-Housing, Inc.
- 2013 Phase I Archaeological Assessment for the Yates Road Project (TTM 36437), Riverside County, California. Prepared for CV Communities, LLC.
- 2013 A Cultural Resources Survey and Evaluation Program for the Warner Ranch Project, San Diego County, California. Prepared for HP Warner Ranch, LP.
- 2013 A Phase I Cultural Resource Assessment for TPM 36585, Riverside County, California. Prepared for GF Real Estate Services.
- 2013 A Class III Cultural Resources Study for TR 31597 and TR 32627, Riverside County, California. Prepared for Standard Pacific Homes.
- 2013 Phase I Cultural Resources Survey for the Sunny Cal Project, City of Beaumont, County of Riverside. Prepared for CV Communities, LLC.

- 2013 A Class III Cultural Resources Study for The Sierra Bella Project for Section 106 Compliance, Riverside County, California. Prepared for Forestar Corona, LLC.
- 2013 A Class III Cultural Resources Study for the Moosa Creek Mitigation Bank Project. Prepared for a Creek LLC.
- 2013 Archaeological Survey of the Rohmiller Residence for a Bulletin 560 Permit Application, 2350 Calle De La Garza, La Jolla, California 92037 (APN 346-180-22). Prepared for Architect Mark D. Lyon, Inc.
- 2013 Cultural Resources Survey and Evaluation Program for the Oak Creek Project, City of Escondido, California. Prepared for New Urban West, Inc.
- 2013 Phase I Cultural Resources Survey for the Hope Harbor Project, Riverside County, California. Prepared for Medhat Rofael.
- 2013 Archaeological Survey of the Liske Residence, La Jolla, California. Prepared for ECEGC Inc.
- 2013 An Updated Phase I Cultural Resources Assessment for Tentative Tract Maps Nos. 36484 and 36485, Audie Murphy Ranch. Prepared for Brookfield Residential.
- 2013 A Phase I Cultural Resources Study For the 401 West Ash Street Project San Diego, California. Prepared for PierPoint Legacy Holdings, LLC.
- 2013 Cultural Resource Test Plan for the Ten on Columbia Project, San Diego, California. Prepared for InDev, Inc.
- 2013 Phase I Cultural Resources Survey for the Washington Avenue Project, City of Murrieta, California. Prepared for Coastal Land Solutions.
- 2012 Phase I Cultural Resources Survey for the Wildomar 23 Project, Riverside County, California. Prepared for Lennar.
- 2012 A Class III Cultural Resources Study for the USGS Creepmeter Project. Prepared for Bureau of Land Management, El Centro Office.
- 2012 Mitigation Monitoring Report for the for the Johnston Residence Project, La Jolla, California. Prepared for Heather Johnston.
- 2012 A Phase I Cultural Resource Study for the Howell Residence Project, Poway, California. Prepared for Cal Howell.
- 2012 Cultural Resource Monitoring Report for the Sewer and Water Group 799 Project. Prepared for Burtech Pipeline.
- 2012 A Phase I Cultural Resources Study For the Villa Hermosa Project San Diego, California. Prepared for David Chow.
- 2012 A Phase I Cultural Resource Study for the Payan Property Project, San Diego, California. Prepared for Landmark Engineering.
- 2012 A Phase I Cultural Resource Study for the El Camino Real Widening Project, Carlsbad, California. Prepared for Planning Systems.

- 2012 A Phase I Cultural Resource Study for the Encore Trust Project, La Jolla, California. Prepared for Metcalf Development and Consulting.
- 2012 A Phase I Cultural Resource Study for the Andres Residence Project, La Jolla, California. Prepared for Engineering Design Group.
- 2012 Phase I Cultural Resources Survey for the Diamond Springs Project, Riverside County, California. Prepared for Benjamin J. Stables III, B 3 Consulting.
- 2012 A Phase I Cultural Resource Study for the ActivCare at Mission Bay Project, San Diego, California. Prepared for ActivCare Living, Inc.
- 2012 Mitigation Monitoring Report for the Water Group 790 Project, City of San Diego, California. Prepared for Orion Construction Corporation.
- 2012 Results of the Mitigation Monitoring Program for the Mission Brewery Villas Project, City of San Diego, California. Prepared for Eilar Associates, Inc.
- 2012 Cultural Resource Monitoring Report for the Gatto Residence Project, La Jolla, California. Prepared for Marengo Morton Architects Inc.
- 2012 Cultural Resource Monitoring Report for the Sunset Cliffs Trunk Sewer Project, City of San Diego, California. Prepared for KTA Construction.
- 2012 Mitigation Monitoring Report for the Sewer Group 682M Project, City of San Diego, California. Prepared for BRH Garver.
- 2012 Cultural Resource Monitoring Report for the Pelberg Residence Project, City of San Diego, California. Prepared for Linda and Art Pelberg.
- 2012 Cultural Resource Monitoring Report for the Rose Creek Bikeway Bridge Project, City of San Diego, California. Prepared for Flatiron West, Inc.
- 2011 Mitigation Monitoring Report for the South Mission Valley Trunk Sewer Project, City of San Diego, California. Prepared for HPS Mechanical, Inc.
- 2011 A Class III Cultural Resources Study for the La Dama de Oro Project, San Bernardino County, California. Prepared for Mohave Gold Mining & Exploration, Inc.
- 2011 Mitigation Monitoring Report for the Jacobs Health Care Facility Project, City of San Diego, California. Prepared for Jacobs Health Care, LLC.
- 2011 A Phase I Cultural Resources Study For the Rowland Auto Dismantling Project, City of San Diego, California. Prepared for David Rowland.
- 2011 A Phase I Cultural Resource Study for the Dye Residence Project, La Jolla, California. Prepared for Eric Dye.
- 2011 Phase I Cultural Resources Survey for the Santa Rosa Academy Project, Riverside County, California. Prepared for Santa Rosa Academy Charter School c/o Bradley Burke Competitive Edge Development, LLC.
- 2011 Cultural Resource Data Recovery Study for SDI-4606 Locus B for Saint Gabriel's Catholic Church, Poway, California. Prepared for Saint Gabriel's Catholic Church.

- 2011 A Phase I Cultural Resource Study for the Nooren Residence Project, La Jolla, California. Prepared for Jack Nooren.
- 2011 Mitigation Monitoring Report for the Sewer and Water Group 768 Project, City of San Diego, California. Prepared for Ortiz Corporation.
- 2011 Cultural Resource Test for the 10th Avenue Parking Lot Project, City of San Diego, California. Prepared for 11th and B Investment Associates, LLC.
- 2011 A Cultural Resources Study for the Ampudia Lot Project, City of San Diego, California. Prepared for Venture Pacific Commercial Services, Inc.
- 2011 A Phase I Cultural Resource Study for the Hyde Residence Project, La Jolla, California. Prepared for Paul and Denise Hyde.
- 2011 A Phase I Cultural Resource Study for the Fialko Residence Project, La Jolla, California. Prepared for Thomas Armstrong Construction, Inc.
- 2011 Mitigation Monitoring Report for the Sewer Group 682M Project, City of San Diego, California. Prepared for HTA Engineering & Construction Inc.
- 2011 A Phase I Cultural Resource Study for the Butterfield Residence Project, La Jolla, California. Prepared for Geotechnical Exploration, Inc.
- 2011 A Cultural Resource Monitoring Report for the Eichen Residence Project, San Diego, California. Prepared for Steigerwald-Dougherty, Inc.
- 2011 Phase I Cultural Resources Survey for the Galway Downs Project, Riverside County, California. Prepared for Trip Hord.
- 2011 Cultural Resource Monitoring Report for Rancho Bella Vista Phase IV (TR 31871), Riverside County, California. Prepared for Lennar Inland Division.
- 2011 Cultural Resource Monitoring Report for the Salvation Army Vehicle Storage Area Demolition Project. Prepared for The Salvation Army General Counsel.
- 2011 A Phase I Cultural Resource Study for the Kates Residence Project, La Jolla, California. Prepared for Brad and Shannon Kates.
- 2011 A Phase I Cultural Resource Study for the Kralik Residence Project, La Jolla, California. Prepared for John Kralik.
- 2010 An Archaeological Monitoring Report for the Cricket Cell Tower Project (Permit # 3399 06-032), San Diego County, California. Prepared for Ken Hayes.
- 2010 A Cultural Resources Study for the 47th Street Warehouse Project City of San Diego, California, Project No. 190957. Prepared for 47th Street Properties.
- 2010 A Cultural Resource Study for the Dickenson Ranch Project, San Bernardino County, California. Prepared for Dickenson and Son Property Management and Investments.
- 2010 A Phase I Cultural Resources Survey for the Young Family Trust Lot Split Project City of Escondido, California. Prepared for Young Family Trust.

- 2010 An Archaeological Monitoring Report for the Jamul Rural Fire Station Auxiliary Access Road Project, San Diego County, California. Prepared for TCB.
- 2010 Cultural Resource Survey and Evaluation Program for the Citracado Parkway Extension Project, City of Escondido, California. Prepared for AECOM.
- 2010 Phase I Cultural Resources Survey for the Sycamore Creek Specific Plan No. 256 Amendment No. 2, Riverside County, California. Prepared for T&B Planning.
- 2010 A Phase III Cultural Resource Data Recovery Program for CA-SDI-16,986, Hidden Meadows, San Diego County, California (TPM 20794). Tuscan Ridge, LLC.
- 2010 Historic Properties Treatment Plan for the Talega (64 Area) 12kV Conversion Project Marine Corps Base Camp Pendleton San Diego County California. Prepared for Synergy Electric Company, Inc.
- 2010 A Cultural Resources Survey and Evaluation Program for the Highlands at Warner Springs Project, Warner Springs, San Diego County, California. Prepared for Warner Springs Estates, LLC.
- 2010 A Cultural Resources Literature Review for the 11099 North Torrey Pines Road Project, San Diego, California. Prepared for Touchstone Investments.
- 2010 A Phase I Cultural Resources Survey for the San Jacinto Poultry Ranch Storage Building Project, San Jacinto, California. Prepared for Moark, LLC.
- 2010 A Phase III Cultural Resource Data Recovery Program for SDI-16986, Hidden Meadows, San Diego, California (TPM 20794). Prepared for Tuscan Ridge, LLC.
- 2010 Cultural Resources Study for the Dos Colinas Project, Carlsbad, California. Prepared for Dos Colinas, LLC.
- 2010 A Phase I Archaeological Survey of the Greater Alpine Fire Safe Council Horsethief Vegetation Management Project. Prepared for the Greater Alpine Fire Safe Council.
- 2010 A Phase I Cultural Resource Study for the Moses Residence Project, La Jolla, California. Prepared for Brian Moses.
- 2010 Pottery Canyon Site Archaeological Evaluation Project City of San Diego, California. Prepared for the City of San Diego Park and Recreation Department.
- 2010 A Phase I Cultural Resource Study for the Shabaz Residence Project, La Jolla, California. Prepared for Negar Shabaz.
- 2009 A Phase I Cultural Resources Study for the Kramer 453 Project, San Bernardino County, California. Prepared for LightSource Renewables LLC.
- 2009 A Cultural Resources Study for the Hronopoulus Residence Project, City of San Diego, California. Prepared for Andreas Hronopoulus.
- 2009 A Cultural Resources Monitoring Report for the East Point Loma Trunk Sewer Project, San Diego, California. Prepared for Southern California Soil and Testing.
- 2009 A Cultural Resources Study for the McKean SDP Project. San Diego, California.
- 2009 An Archaeological Assessment for the Rivera-Placentia Project, City of Riverside, California.

Prepared for Riverside Construction Company.

- 2009 Cultural Resource Data Recovery Plan for the North Ocean Beach Gateway Project. Prepared for the City of San Diego and KTU+A.
- 2009 Cultural Resource Letter Report for the Borrego Substation Feasibility Study, Borrego Springs, California. Prepared for RBF Consulting.
- 2009 A Cultural Resource Study for the Gatto Residence Project, La Jolla, California. Prepared for Marengo Martin Architects Inc.
- 2009 A Cultural Resource Report for the Central Feeder Connection Project, San Bernardino, California. Prepared for Albert A. Webb and Associates.
- 2009 A Cultural Resource Report for the Clay Street Connection Project, Riverside, California. Prepared for Albert A. Webb and Associates.
- 2009 A Cultural Resource Report for the Green Hills Project, San Diego County, California. Prepared for Atlas Investments, LLC.
- 2009 A Cultural Resource Report for the La Sierra Pipeline Project, Riverside, California. Prepared for Albert A. Webb and Associates.
- 2009 Cultural Resources Monitoring Report for the East Point Loma Trunk Sewer Project. Prepared for Southern California Soil & Testing.
- 2009 A Cultural Resource Report for the Mockingbird Connection Project, Riverside, California. Prepared for Albert A. Webb and Associates.
- 2009 A Cultural Resource Report for the Mesquite Lake Treatment Plan Project, Imperial County, California. Prepared for Albert A. Webb and Associates.
- 2008 Phase I Cultural Resource Survey for the 28220 Highridge Road Development Project, Rancho Palos Verdes, California. Prepared for REC Development.
- 2008 Wild Goose Expansion 3 Project Butte County, California Colusa County, California. Prepared for Niska Gas Storage LLC.
- 2008 Class III Cultural Resource Survey for the Burlington Northern Santa Fe Four Railway Bridge Renewal Project, San Bernardino County, California. Prepared for BNSF Railway Company.
- 2008 I-80 Colfax Site Cultural Resource Records Search Report, Placer County, California. Prepared for Granite Construction Company.
- 2008 I-80 Gold Run Site Cultural Resource Records Search Report, Placer County, California. Prepared for Granite Construction Company.
- 2008 Cultural Resource Monitoring at 31431 Camino Capistrano, San Juan Capistrano, California. Prepared for Herman Weisker, Inc.
- 2008 Cultural Resource Inventory for the Snow White Pumice Mine, Hinkley, California. Prepared for U.S. Mining and Minerals Corporation.
- 2007 Nodule Industries of North Coastal San Diego: Change and Stasis in 10,000 Years of Lithic

Technology. Masters thesis on file, San Diego State University.

- 2007 Cultural Resource Inventory for Empire Homes (APN 104-180-04), Lake Forest, California. Prepared for Empire Homes.
- 2007 Phase I Archaeological Assessment for APN 104-200-09, Beaumont, California. Prepared for Mary Chan.
- 2007 Cultural Resource Inventory for Empire Homes (APN 104-180-04), Lake Forest, California. Prepared for Empire Homes.
- 2006 Carlsbad Municipal Golf Course Data Recovery Program for CA-SDI-8694, and Indexing and Preservation Program Study for CA-SDI-8303 and CA-SDI-8797 Locus C, City of Carlsbad, California. Prepared for City of Carlsbad.
- 2005 Grand Pacific Resorts Data Recovery and Index Sample Program for CA-SDI-8797, Area A, City of Carlsbad, California. Prepared for Grand Pacific Resorts Inc.
- 2004 "Near the Harris Site Quarry" Cultural Resource Data Recovery and Preservation Program for CA-SDI-13028, San Diego County, California. Prepared for Harbrecht Development, L.P.
- 2004 Cultural Resource Survey and Boundary Test Report for the Lilac Ranch Project, San Diego County, California. Prepared for Empire Companies.
- 2003 Cultural Resource Data Recovery and Preservation Program for CA-SDI-12027, San Diego County, California. Prepared for Harbrecht Development Inc.
- 2002 Data Recovery Program for the Pacbell Site CA-SDI-5633, San Marcos, California. Prepared for Joseph Wong Design Associates.
- 2001 McCrink Ranch Cultural Resource Test Program Additional Information for Selected Sites, San Diego County, California. Prepared for Shapouri & Associates.
- 2001 The Quail Ridge Project Cultural Resource Test Program, San Diego County, California. Prepared for Helix Environmental Planning, Inc.
- 2000 Cultural Resource Survey and Evaluation for the North Sand Sheet Full Buildout Program, Owens Lake, California. Prepared for CH2MHill.
- 1995 Final Report: Archaeological Investigations Conducted for the Abalone Cove Dewatering Wells, City of Rancho Palos Verdes Los Angeles County, California. Prepared for the City of Rancho Palos Verdes, Environmental Services.
- 1995 Final Report: A Class III Intensive Survey of a 100-Acre Sand and Gravel Mining Area, Imperial County, California. Prepared for the Lilburn Corporation.
- 1994 Final Report: Data Recovery Excavations at Five Late Prehistoric Archaeological Sites Along the Los Trancos Access Road, Newport Coast Planned Community, Orange County, California. Prepared for the Coastal Community Builders, a division of The Irvine Company.

Contributing Author

- 2019 Cultural Resources Study for the 3868-3900 Sepulveda Boulevard Project, City of Culver City, Los Angeles County, California. Prepared for Sepulveda Suites, Inc.

- 2019 Final Archaeological Data Recovery and Mitigation Monitoring Program for the Westin Hotel and Timeshare Project, City of Carlsbad, California. Prepared for Grand Pacific Resorts, Inc.
- 2019 Cultural Resources Study for the Commerce Logistics Center Project, 5200 Sheila Street, Commerce, California 90040. Prepared for T&B Planning, Inc.
- 2019 A Section 106 (NHPA) Historic Resource Study for the McElwain Project (SPL-2019-00565), Murrieta, Riverside County, California. Prepared for Murrieta Development II, LLC.
- 2019 Phase II Cultural Resource Study for the McElwain Project, City of Murrieta, California. Prepared for Murrieta Development II, LLC.
- 2018 A Phase I and II Cultural Resources Assessment for the Emerald Acres Project, Winchester, Riverside County. Prepared for T&B Planning, Inc.
- 2018 A Cultural Resources Monitoring Report for the Golden City Project, Tracts 28532-1, -2, -3, -4, and -5 and Tract 34445, City of Murrieta, California. Prepared for North Murrieta Community, LLC.
- 2018 An Archaeological/Historical Study for the Citracado Business Park West Project, City of Escondido. Prepared for Pacific Harmony Grove Development.
- 2015 Cultural Resource Survey and Evaluation Program for the Westin Hotel and Timeshare Project, City of Carlsbad, California. Prepared for Grand Pacific Resorts, Inc.
- 2015 A Class III Cultural Resource Study for the Habitat for Humanity Project, Perris, California. Habitat for Humanity Inland Valley.
- 2015 A Phase II Cultural Resource Assessment for the Munro Valley Solar Project, Inyo County, California. Prepared for Prepared for Ecos Energy, LLC.
- 2014 An Extended Phase I Cultural Resource Assessment for the Belvedere-Webster Project, City of Poway, California (APN 323-010-26-00). Prepared for Webster Realty Group.
- 2014 Cultural Resources Study for the Brook Forest Conservation Bank Project, Valley Center, San Diego County, California. Prepared for Brook Forest, LLC.
- 2014 A Phase I Cultural Resource Study for the Crystal View Lane Project, Poway, California. Prepared for Mark Catrambone.
- 2014 Cultural Resource Assessment for the Muscat Project, Poway, California (TPM 13-002; APN 278-180-44). Prepared for Mr. Ed Muscat.
- 2014 An Extended Phase I Cultural Resource Assessment for the Mulholland Highway Improvement Project, Cities of Calabasas and Los Angeles, Los Angeles County, California. City of Calabasas Public Works Department.
- 2014 Mitigation Monitoring Report for the 9th and Broadway Project, City of San Diego. Prepared for Bridge Housing Corporation.
- 2013 Cultural Resource Test Plan for the Cisterra Sempra Tower Project San Diego, California. Prepared for Eilar Associates, Inc.
- 2013 A Section 106 (NHPA) Cultural Resources Study for the Toscana Project, Riverside County, California. Prepared for Forestar Toscana, LLC.

- 2013 Cultural Resource Test Plan for the Gaslamp Hotel Project. Prepared for The Robert Green Company.
- 2012 Cultural Resource Test Plan for the Pinnacle International 15th and Island Project. Prepared for Pinnacle International.
- 2012 Cultural Resource Test Plan for the Horton Plaza Park Improvement Project. Prepared for the City of San Diego.
- 2012 Mitigation Monitoring Report for the T-Mobile West, LLC Telecommunications Candidate SD02867C (Presidio Park). Prepared for Michael Brandman Associates.
- 2012 Cultural Resource Test Plan for the Old Police Headquarters Project. Prepared for Terramar Retail Centers.
- 2012 Cultural Resource Test Plan for the Knight Residence Project. Prepared for Mr. Dennis Knight.
- 2012 Cultural Resource Test Plan for the 9th and Broadway Project. Prepared for Bridge Housing Corporation.
- 2012 Cultural Resource Test Plan for the Blue Sky Project. Prepared for Gray Development.
- 2011 An Archaeological Study for 1887 Viking Way Project, La Jolla, California. Prepared for Island Architects.
- 2011 A Cultural Resource Evaluation Program for the Otay Hills Quarry Project, San Diego County, California, Log No. 93-19-006J; P04-004; RPO4-001. Prepared for EnviroMINE.
- 2010 A Cultural Resource Evaluation Program for the Batchelder Lot Split Project, San Diego County, California, TPM 21177; KIVA PROJECT 10-0125593; APNs 247-010-10, -13. Prepared for David Batchelder.
- 2010 A Cultural Resources Survey and Evaluation Program for the Butterfield Trails Ranch Project, Valley Center, San Diego County, California, TM 5551, P 08-028, GPA 06-007, REZ 06-010, LOG NO. 06-08-033. Prepared for Wayne B. Hilbig.
- 2008 Lithic Analysis for Thirteen Sites Along the Transwestern Phoenix Expansion Project, Loops A and B. Prepared for Transwestern Pipeline Company, LLC.
- 2005 Cultural Resource Survey and Testing for the Star Ranch Property, San Diego, California.
- 2004 Cultural Resource Test Report for the Palomar Point Project: Site CA-SDI-16205, Carlsbad, California. Prepared for Lanikai Management Corp.
- 2004 Cultural Resource Survey and Test Report for the Canyon View Project, Carlsbad, California. Prepared for Shapouri & Associates.
- 2004 Cultural Resource Test Report for the Yamamoto Property: Site SDM-W-2046, Carlsbad, California. Prepared for Cunningham Consultants, Inc.
- 2004 Historical Resources Report for the Kuta and Mascari Properties, Otay Mesa, California. Prepared for Centex Homes.
- 2004 Cultural Resource Monitor and Test Report for the Encina Power Plant Project, Carlsbad,

- California. Prepared for Haley & Aldrich, Inc.
- 2004 Cultural Resource Test Report for Site CA-SDI-16788, Otay Mesa, California. Prepared for Otay Mesa Property, L.P.
- 2004 Cultural Resource Survey and Test Report for the Lonestar Project, Otay Mesa, San Diego County, California. Prepared for Otay Mesa Property, L.P.
- 2003 Cultural Resource Mitigation Program for the Torrey Ranch Site CA-SDI-5325, San Diego, California. Prepared for Garden Communities.
- 2003 Cultural Resource Survey and Test Report for the Johnson Canyon Parcel, Otay Mesa, San Diego County, California. Prepared for Otay Mesa Property, L.P.
- 2002 Cultural Resource Data Recovery Plan for the Shaw Project: Sites CA-SDI-13025 and CA-SDI-13067, San Diego County, California. Prepared for Shapouri & Associates.
- 2001 Archaeological Test Program for CA-SDI-14112 Mesa Norte Project, San Diego, California. Prepared for Hunsaker & Associates.
- 2001 The Vista-Oceanside Cultural Resource Survey and Test Program, Vista, California. Prepared for Shapouri & Associates.
- 2001 Cultural Resource Test Program for the Wilson Property, Carlsbad, California. Prepared for the City of Carlsbad.
- 2001 Cultural Resource Test Plan for the Oceanside-Escondido Project, County of San Diego, California. Prepared for Dudek & Associates.
- 2001 Cultural Resource Test Program for the Kramer Junction Expansion Project Adelanto, California. Prepared for AMEC.
- 2001 Cultural Resource Test Program for CA-SDI-12508 San Diego, California (LDR No. 99-1331). Prepared for Garden Communities.
- 2000 Archaeological Testing of Prehistoric Sites CASDI-14115 and CA-SDI-14116 for The Mesa Grande Project, San Diego, California. Prepared for Solana Mesa Partners, LLC.
- 2000 Cultural Resource Survey and Test Report for the Wetmore Property, Otay Mesa, San Diego County, California. Prepared for Mr. Andy Campbell.
- 2000 The Torrey Ranch Cultural Resource Test Program, San Diego County, California. Prepared for Garden Communities.
- 2000 Cultural Resource Test Results for the Otay Mesa Generating Project. Prepared for the California Energy Commission and Otay Mesa Generating Company, LCC.
- 2000 The Eternal Hills Cultural Resource Survey and Test Program, City of Oceanside, California. Prepared for Eternal Hills Memorial Park.
- 2000 The Quail Ridge Cultural Resource Test Program, San Diego County, California. Prepared for Helix Environmental Planning Inc.
- 2000 Cultural Resource Testing Program for CA-SDI-5652/H and CA-SDI-9474H SR 78/Rancho Del Oro

- Interchange Project, Oceanside, California. Prepared for Tetrattech Inc.
- 2000 Cultural Resource Test Results for a Portion of CA-SDI-8654 (Kuebler Ranch) Otay Mesa, San Diego County, California. Prepared for Shapouri & Associates.
- 2000 Historical/Archaeological Monitoring and Data Recovery Program for Prehistoric Site CA-SDI-48, Locus C Naval Base Point Loma, San Diego, California. Prepared for Department of the Navy, Southwest Division.
- 2000 Cultural Resource Evaluation Report for the Palomar College Science Building Project, San Marcos, California. Prepared for Parsons Engineering Science Inc.
- 1999 Cultural Resource Monitoring Report for the Village of Ystagua Water Main Break City of San Diego, California. Prepared for the City of San Diego Water Department.
- 1999 The Effect of Projectile Point Size on Atlatl Dart Efficiency in Lithic Technology Vol. 24, No 1 p (27-37).
- 1999 Cultural Resource Evaluation Report for the Oceanside-Escondido Bikeway Project, San Marcos, California. Prepared for City of San Marcos.
- 1999 5000 Years of Occupation: Cultural Resource Inventory and Assessment Program for the Carlsbad Municipal Golf Course Project City of Carlsbad, California. Prepared or Cotton/Beland/Associates, Inc.
- 1999 Silver Oaks Estates Cultural Resource Enhanced Survey and Test Report for a Portion of CA-SDI-7202 San Diego, California. Prepared for Helix Environmental Planning Inc.
- 1999 Historical Archaeological Test of a portion of CA-SDI-8303 for the Faraday Road Extension Carlsbad, California. Prepared for the City of Carlsbad.
- 1999 Cultural Resource Literature Review for the North Coast Transportation Study Arterial Streets Alternative San Diego County, California. Prepared for MLF/San Diego Association of Govt.
- 1998 Archaeological Test Report for a Portion of CA-SDI-9115/SDM-W-122 Carlsbad, California. Prepared for Industrial Developments International.
- 1998 Rainforest Ranch Cultural Resource Survey and Significance Test for Prehistoric Sites CA-SDI-14932, CA-SDI-14937, CA-SDI-14938, and CA-SDI-14946 County of San Diego, California. Prepared for the Boys and Girls Club of Inland North County.
- 1998 Cultural Resource Evaluation Report for the Oceanside-Escondido Bikeway Project San Marcos, California.
- 1998 Final Report: Cultural Resource Survey Report for the Sterling Property, Carlsbad, California. Prepared for SPT Holdings LCC.
- 1996 Final Report: Archaeological Survey and Test for the Huber Property Carlsbad, California. Prepared for Gene Huber.
- 1996 Final Report: Results of Phase II Test Excavations and Phase III Data Recovery Excavations at Nine Archaeological Sites Within the Newport Coast Planned Community Phase III Entitlement Area, San Joaquin Hills, Orange County, California. Prepared for Coastal Community Builders, a division of The Irvine Company.

- 1995 Preliminary Report: Phase II Test Results From Nine Prehistoric Archaeological Sites within the Proposed Upper Newport Bay Regional County Park. Prepared for EDAW, Inc.
- 1995 Final Report: A Phase II Test Excavation at CA-ORA-136, Block 800 City of Newport Beach, Orange County California. Prepared for the Irvine Apartment Communities.

APPENDIX B

Table 4.0-1

Table 4.0-1

Relevant Studies Conducted in the Area of 1855 Spindrift Drive

Berryman, Judy and Linda Roth

- 1993 Survey, Significance Testing and Proposed Mitigation on a Portion of SDM-W-1 (SDI-39) and Historic Evaluation of Parcel #346-461-6, San Diego, California. TMI Environmental Services. Unpublished report on file at the South Coastal Information Center at San Diego State University, San Diego, California.

Berryman, Judy, Amy E. Gusick, Adriane Dorrlor, and Shannon Erickson

- 2014 Final Report Excavations at CA-SDI-39: The Spindrift Site 1912 Spindrift Drive, La Jolla, California (Project No. 214654; APN 346-44-04). HDR. Unpublished report on file at the South Coastal Information Center at San Diego State University, San Diego, California.

Case, Robert P.

- 2002 Cultural Resources Survey of a One-Acre Lot, 1600 Torrey Pines Road, La Jolla, City of San Diego, California. Mooney and Associates. Unpublished report on file at the South Coastal Information Center at San Diego State University, San Diego, California.
- 2008 Draft Cultural Resources Mitigation Monitoring Report for the O'Connor Residential Project (PTS No. 76635), 1819 Spindrift Drive, La Jolla, California. ICF Jones & Stokes. Unpublished report on file at the South Coastal Information Center at San Diego State University, San Diego, California.

Case, Robert P., Carol Serr, and Laura Barrie

- 2003 Limited Phase II Investigation of CA-SDI-39 within the Hazard Property: 1876 Torrey Pines Road (APN 346-454-0900), La Jolla, California. Mooney and Associates. Unpublished report on file at the South Coastal Information Center at San Diego State University, San Diego, California.

Case, Robert P., Richard L. Carrico, and Carol Serr

- 2007 Final Phase II and Phase III Archaeological Investigation of a Portion of CA-SDI-39 for the Hazard Residential Project (MND No. 5664), 1876 Torrey Pines Road, La Jolla, California. Mooney Jones & Stokes. Unpublished report on file at the South Coastal Information Center at San Diego State University, San Diego, California.

Cheever, Dayle

- 2001 Results of a Phase I Cultural Resource Survey at 7983 Roseland Drive, La Jolla, California. Unpublished report on file at the South Coastal Information Center at San Diego State University, San Diego, California.

Clowery-Moreno, Sara and Brian F. Smith

- 2008 A Cultural Resource Study for the Daniels Residence (APN 346-451-01-00; Project No. 153921). Brian F. Smith and Associates. Unpublished report on file at the South Coastal Information Center at San Diego State University, San Diego, California.

Conroy, Jillian L.H., Tracy A. Stropes, and Brian F. Smith

- 2022 A Cultural Resources Study for 1851 Spindrift Drive, La Jolla, San Diego, California. Unpublished report on file at the South Coastal Information Center at San Diego State University, San Diego, California.

Cook, John

- 1996 Wilson Residence Archaeology (LDR #96-0595). Unpublished report on file at the South Coastal Information Center at San Diego State University, San Diego, California.

Giletti, Andre and Ruth Alter

- 2002 Archaeological Resource Testing of the Residence at 1908 Hypatia Way, La Jolla, San Diego, California. Unpublished report on file at the South Coastal Information Center at San Diego State University, San Diego, California.

Gross, Timothy

- 1999 Archaeological Resources Testing of the Residence at 1900 Spindrift Drive, La Jolla, San Diego, California. City of San Diego, Planning and Development Review Department. Unpublished report on file at the South Coastal Information Center at San Diego State University, San Diego, California.

Gross, Timothy G. and Mary Robbins-Wade

- 1999 Archaeological Resources Inventory 8480 Paseo Del Ocaso, La Jolla, San Diego, California (LDR No. 96-7879). Unpublished report on file at the South Coastal Information Center at San Diego State University, San Diego, California.

Hahnlen, Jillian L. and Brian F. Smith

- 2019a A Cultural Resources Study for 7910 St. Louis Terrace, City of San Diego (PTS No. 572694). Brian F. Smith and Associates, Inc. Unpublished report on file at the South Coastal Information Center at San Diego State University, San Diego, California.
- 2019b A Cultural Resources Study for 7935 El Paseo Grande, City of San Diego (PTS No. 637452). Brian F. Smith and Associates, Inc. Unpublished report on file at the South Coastal Information Center at San Diego State University, San Diego, California.

Hall, Jaqueline and Roderic McLean

- 2013 Cultural Resources Constraints Analysis, Torrey Pines Road Improvements Phase I, City of San Diego, San Diego County, California. LSA Associates, Inc. Unpublished report on file at the South Coastal Information Center at San Diego State University, San Diego, California.

Hoff, Clarence, Tracy A. Stropes, and Brian F. Smith

- 2011 Mitigation Monitoring Report for the 1887 Viking Way Project. Brian F. Smith and Associates, Inc. Unpublished report on file at the South Coastal Information Center at San Diego State University, San Diego, California.

Kraft, Jennifer R. and Brian F. Smith

- 2013a Mitigation Monitoring Report for the 1919 Spindrift Drive Project, La Jolla, California (APN

346-452-02-00). Brian F. Smith and Associates, Inc. Unpublished report on file at the South Coastal Information Center at San Diego State University, San Diego, California.

2013b Mitigation Monitoring Report for the Knight Residence Project, 7970 Roseland Avenue, La Jolla, California. Brian F. Smith and Associates, Inc. Unpublished report on file at the South Coastal Information Center at San Diego State University, San Diego, California.

2015 Mitigation Monitoring Report for the 1905 Spindrift Remodel Project, La Jolla, California. Brian F. Smith and Associates, Inc. Unpublished report on file at the South Coastal Information Center at San Diego State University, San Diego, California.

Kyle, Carolyn

2002 Cultural Resource Survey for the Checota Residence, City of San Diego, California. Unpublished report on file at the South Coastal Information Center at San Diego State University, San Diego, California.

Pierson, Larry J.

2006 An Archaeological and Historical Significance Reevaluation of the 1905 Spindrift Residence (Site CA-SDI-39; P-37-027407, Development Services Project No. 95885). Unpublished report on file at the South Coastal Information Center at San Diego State University, San Diego, California.

2007a A Cultural Resource Study for the 1905 Spindrift Drive (Site CA-SDI-39/W-1; P-37-027407; Development Services Project No. 95885). Unpublished report on file at the South Coastal Information Center at San Diego State University, San Diego, California.

2007b Archaeological Resource Report Form: Archaeological Survey of the Liaghat Residence Project. Brian F. Smith and Associates. Unpublished report on file at the South Coastal Information Center at San Diego State University, San Diego, California.

2009a Archaeological Resource Report Form: Mitigation Monitoring of the Carson Residence (Project Building Permit #14705). Unpublished report on file at the South Coastal Information Center at San Diego State University, San Diego, California.

2009b Report of Archaeological Mitigation and Reporting Program for the Johnson Residence at 1857 Viking Way, La Jolla, California (Site CA-SDI-39/W-1; City Project No. 117991). Unpublished report on file at the South Coastal Information Center at San Diego State University, San Diego, California.

Pigniolo, Andrew R.

2013 Cultural Resource Testing and Monitoring for the Sexton Residence Addition Project at 7904 Roseland Drive, La Jolla Shores, City of San Diego, California (APN 346-482-09-00). Laguna Mountain Environmental. Unpublished report on file at the South Coastal Information Center at San Diego State University, San Diego, California.

- 2015 Cultural Resource Survey and Testing Results for the Residential Demolition Project at 7949 Lowry Terrace, La Jolla Shores, City of San Diego, California. Laguna Mountain Environmental. Unpublished report on file at the South Coastal Information Center at San Diego State University, San Diego, California.

Pigniolo, Andrew R. and Michael Baksh

- 1999 Cultural Resources Inventory of the Coastal Low Flow Storm Drain Diversion System, City of San Diego, California. Unpublished report on file at the South Coastal Information Center at San Diego State University, San Diego, California.

Pigniolo, Andrew R. and Natalie Brodie

- 2009 Preliminary Draft Cultural Resource Monitoring and Data Recovery for the Princess Street/Spindrift Drive Underground Utility District: The Spindrift Site (CA-SDI-39/17372, SDM-W-1). Unpublished report on file at Laguna Mountain Environmental, Inc., San Diego, California.

Robbins-Wade, Mary

- 2013 Hawkins Residence (1963 Paseo Dorado) Cultural Resources Memo. Affinis. Unpublished report on file at the South Coastal Information Center at San Diego State University, San Diego, California.

Robbins-Wade, Mary and Andrew Giletti

- 2013 Cultural Resources Monitoring Report; Burton-Hawkins Residence Remodel, Phase 1, Spindrift Site (CA-SDI-39/SDM-W-1), La Jolla, San Diego, California. Affinis. Unpublished report on file at the South Coastal Information Center at San Diego State University, San Diego, California.

- 2014a Cultural Resources Testing Report: Burton-Hawkins Residence Remodel, Phase 2, Spindrift Site (CA-SDI-39/SDM-W-1), La Jolla, San Diego, California. Affinis. Unpublished report on file at the South Coastal Information Center at San Diego State University, San Diego, California.

- 2014b Cultural Resources Monitoring Report, 1856 Viking Way, Spindrift Site (CA-SDI-39/SDM-W-1), La Jolla, San Diego, California. Helix. Unpublished report on file at the South Coastal Information Center at San Diego State University, San Diego, California.

- 2015 Cultural Resources Monitoring Report: Burton-Hawkins Residence Remodel, Phase 2, Spindrift Site (CA-SDI-39/SDM-W-1), La Jolla, San Diego, California. Helix Environmental. Unpublished report on file at the South Coastal Information Center at San Diego State University, San Diego, California.

Robbins-Wade, Mary and Timothy Gross

- 1998 Archaeological Resources Enhanced Survey of the Krikorian Residence, 1828 Spindrift Drive, La Jolla, San Diego, California (LDR No. 98-0215). Affinis. Unpublished report on file at the South Coastal Information Center at San Diego State University, San Diego, California.

Rosenberg, Seth and Brian F. Smith

- 2007a A Cultural Resources Study for the Johnson Residence (Site CA-SDI-39/W-1; Project No. 117991). Unpublished report on file at the South Coastal Information Center at San Diego State University, San Diego, California.
- 2007b A Cultural Resources Study for the Schroedl/Torrey Pines Residences Project. Unpublished report on file at the South Coastal Information Center at San Diego State University, San Diego, California.
- 2007c An Archaeological Study for 1905 Spindrift Drive (Development Services Project No. 95885; Site CA-SDI-39/W-1). Unpublished report on file at the South Coastal Information Center at San Diego State University, San Diego, California.

Shultz, Richard G., Timothy Gross, and Mary Robbins-Wade

- 1999 Wassenaar Residence Archaeological Monitoring: LDR No. 96-7773. Affinis. Unpublished report on file at the South Coastal Information Center at San Diego State University, San Diego, California.

Smith, Brian F.

- 2000 Enhanced Cultural Resource Survey for the Malk Residence Project, La Jolla, City of San Diego. Brian F. Smith and Associates. Unpublished report on file at the South Coastal Information Center at San Diego State University, San Diego, California.
- 2011 A Phase I Cultural Resource Study for 1887 Viking Way, La Jolla, California. Brian F. Smith and Associates, Inc. Unpublished report on file at the South Coastal Information Center at San Diego State University, San Diego, California.
- 2015 A Cultural Resources Study for the Arthofer Residence Project, 1890 Viking Way La Jolla, California. Brian F. Smith and Associates, Inc. Unpublished report on file at the South Coastal Information Center at San Diego State University, San Diego, California.

Smith, Brian F. and Tracy A. Stropes

- 2011 Research Design, Data Recovery Program, and Mitigation Monitoring and Reporting Program for 1900 Spindrift Drive, La Jolla, California, APN 346-44-05. Brian F. Smith and Associates. Unpublished report on file at the South Coastal Information Center at San Diego State University, San Diego, California.

Smith, Brian F., Tracy A. Stropes, Tracy M. Buday, and Jennifer R. Kraft

- 2015a Mitigation Monitoring and Reporting Program for the 1900 Spindrift Drive – Cabana and Landscape Improvements Project, La Jolla, California. Brian F. Smith and Associates, Inc. Unpublished report on file at the South Coastal Information Center at San Diego State University, San Diego, California.
- 2015b Mitigation Monitoring and Reporting Program for the 1912 Spindrift Drive – Landscape Improvements Project, La Jolla, California. Brian F. Smith and Associates, Inc. Unpublished report on file at the South Coastal Information Center at San Diego State University, San Diego, California.

Diego, California.

Stropes, Tracy A. and Brian F. Smith

- 2010 A Phase I Cultural Resource Study for the Moses Residence Project, La Jolla, California. Brian F. Smith and Associates, Inc. Unpublished report on file at the South Coastal Information Center at San Diego State University, San Diego, California.
- 2011 An Archaeological Study for the 1912 Spindrift Drive Project, La Jolla, California. Brian F. Smith and Associates, Inc. Unpublished report on file at the South Coastal Information Center at San Diego State University, San Diego, California.
- 2012 A Phase I Cultural Resource Study for the Andres Residence Project, La Jolla, California. Brian F. Smith and Associates, Inc. Unpublished report on file at the South Coastal Information Center at San Diego State University, San Diego, California.
- 2018 A Cultural Resources Study for 1834 Spindrift Drive, City of San Diego (Project No. 58420). Brian F. Smith and Associates, Inc. Unpublished report on file at the South Coastal Information Center at San Diego State University, San Diego, California.

Wade, Sue

- 1998 Cultural Resource Survey and Test Excavations for a Portion of CA-SDI-39/SDM-W-1, 1949 Hypathia Way, La Jolla, California (City of San Diego LDR No. 96-7773). The City of San Diego, Development Services Center. Unpublished report on file at the South Coastal Information Center at San Diego State University, San Diego, California.

Zepeda-Herman, Carmen

- 2011 Background Research and Test Excavation for the Sewer and Water Group 809, San Diego, California. RECON. Unpublished report on file at the South Coastal Information Center at San Diego State University, San Diego, California.