



The City of San Diego

Staff Report

DATE ISSUED: June 2, 2026  
TO: City Council  
FROM: City Planning  
SUBJECT: General Plan Maintenance Fee Update

Primary Contact: Scott Mercer Phone: (619) 533-3676

Secondary Contact: Armando Dominguez Phone: (619) 236-6896

Council District(s): All

OVERVIEW:

At the March 3, 2025, City Council hearing for adoption of the Fiscal Year 2026 Comprehensive User Fee Analysis, the Council requested that the City Planning Department conduct a study of the General Plan Maintenance Fee (GPMF) to evaluate its potential for additional revenue and to develop a more equitable fee structure scaled to the scope of a proposed development. This report presents the study and proposes modifications to the GPMF. While many jurisdictions would retain consultants to perform a study of this nature, the City Planning Department is pleased to report that this study was performed in-house by the Department's highly dedicated and qualified fiscal team.

The GPMF is authorized under state law. It is assessed on development projects to offset City costs associated with long-range planning activities and maintenance of the City's General Plan. The current structure applies a flat fee regardless of project size or complexity. The proposed action would change the GPMF from a flat fee to a surcharge-based fee that more appropriately reflects the scale and complexity of development projects and their relationship to maintenance of the City's General Plan.

This action would replace the City's existing flat General Plan Maintenance Fee of \$737 with an 11.25% surcharge applied to applicable plan check, permit, project review, and administrative fees associated with development projects. By linking the fee to project-related review costs that vary with the scale and complexity of a project, smaller and less complex projects would pay less than the current flat fee, and larger more complex projects would pay more.

The proposal is consistent with the City's citywide user fee methodology and is informed by benchmarking against comparable California jurisdictions. The recommended changes would improve equity, strengthen cost recovery, and over time, would provide a more sustainable revenue source to support the Department's long-range planning work program.

**PROPOSED ACTIONS:**

ADOPT a resolution to:

1. ADOPT a revised GPMF that is calculated and applied as a surcharge of 11.25% to be applied to certain fees associated with development plan checks, reviews, permits, and related administrative actions as identified in the Fee List (attached hereto as Attachment 6), to become effective as determined by the City Planning Director and no earlier than 60 days after final passage.
2. AUTHORIZE the Department of Finance to amend the Rate Book to include the updated GPMF.

**DISCUSSION OF ITEM:**

**Background:**

The City's GPMF was originally adopted in 1991 by San Diego Resolution No. R-278187 (Jun. 24, 1991), as a long-range planning cost recovery mechanism, as allowed by the California Government Code. Since then, it has been periodically updated. The GPMF was most recently updated in March 2025 as part of the City's Fiscal Year 2026 Comprehensive User Fee Analysis (San Diego Resolution R-316067 (Mar. 13, 2025)).

The GPMF (fee) is currently charged to development applications for the most common permit types including building permits and certain grading, right-of-way, and sign permits. The revenues are used to support the City Planning Department Work Program that advances long-range planning, maintaining the General Plan, updating community plans, the City's zoning regulations, and other plans, policies and studies that implement the General Plan.

The fee stems from statutory requirements requiring cities to have a planning agency and from provisions allowing cities to charge fees for planning services. Specifically, California Government Code (CGC) Title 7, Division 1, Chapter 3 §65100-65763 requires cities to have a planning agency (the City Planning Department) and contains specific requirements of the duties and obligations associated with City Planning, including, but not limited to:

- Adoption of a General Plan,
- Regular review and Maintenance of the General Plan,
- Public Participation in the preparation, adoption, and amendments of the General Plan,
- Intergovernmental Coordination with the State, counties, districts, and tribal governments,
- Implementation of the General plan through the adoption of specific plans, zoning ordinances, and subdivision approvals,
- The inclusion of specialized elements such as conservation, open space, noise, safety, environmental justice, and
- The inclusion of a Housing Element.

Government Code sections 65104 and 66014 (b) further contain provisions enabling cities to charge fees for these City Planning services if they do not exceed the reasonable costs of the local government for the service for which the fee is charged. Government Code section 65300 requires all local jurisdictions in California to have an adequate General Plan. Two distinct segments of the population and business community benefit from the maintenance of a comprehensive and sustainable General Plan: 1) the existing (*already developed*) residential and business community and 2) the future (*new development*) residential and business community. Because both existing and new development benefit from long-range planning and the maintenance of the City's General Plan, the City's GPMF is a partial cost-recovery fee, and not a full cost-recovery fee.

At the March 3, 2025 City Council hearing on the adoption of the Fiscal Year 2026 Comprehensive User Fee Analysis, the City Council requested that the City Planning Department bring forward an update to the GPMF to address equity and increased cost recovery objectives. The City Planning Department has prepared the analysis, and this report provides the fee study findings, which recommends replacing the City's existing GPMF flat fee of \$737, with an 11.25% surcharge on applicable plan checks, project reviews, permits, and administrative fees associated with development projects.

### **GPMF Restructuring Study Overview**

#### **Methodology and Process:**

The surcharge fee methodology utilized in this study is consistent with the methodology used in the City's 2026 Comprehensive User Fee Analysis methodology and incorporates benchmarking. The methodology was followed to determine the cost of the services for which the fee is charged, the cost recovery calculations, and the derivation of the proposed GPMF surcharge.

The methodology includes the following processes:

1. Benchmarking
2. Definition of the purpose and nexus of the fee, i.e. *What will the fee fund?*
3. Identification of the eligible cost components, i.e. determination of the cost of providing the service for which the fee is charged
4. Determination of the fees to be subject to the surcharge
5. Determination of the cost allocation basis (cost recovery calculations)
6. Establishment of the surcharge fee formula (new process for surcharge vs. flat fee)

GPMF fee users benefit directly from these long-range planning activities, which overall allow for new development to occur. City Planning strives to maintain and implement the City's General Plan in a manner that provides benefits to development projects that exceed the cost of the fees paid to do so. These benefits are gained through certainty in the development process and time saved during the permitting process.

**Benchmarking:**

The City Planning Department conducted benchmarking on GPMF fee practices among the 10 largest cities in California, and the City of Chula Vista.

Benchmarking focused on the following:

1. Type of GPMF fee: flat fee, variable fee, or other
2. Type of variable fee/surcharge: based on permit fees, % of building permit valuation, or other
3. Rate of the surcharge or fee amount
4. Types of fees to which surcharge applies
5. Cost recovery achieved
6. Revenue generated
7. Use of funds

The table below presents a high-level summary of the benchmarking findings.

<b>Benchmarking Summary</b>			
<b>Flat Fee (Per project application)</b>	<b>Variable Fee (Surcharge on Plan Check &amp; Permit Fees)</b>	<b>Variable Fee (% of Building Permit Valuation)</b>	<b>No Specific Fee for General Plan Maintenance</b>
San Diego \$737	Los Angeles 10% General Plan Maintenance Surcharge (+ \$5 per instance Admin Fee and a 6% Automated Systems Development Surcharge) Surcharge applied to Plan Checks. Surcharge does not apply to inspections.	Sacramento (\$2.60 per \$1K building permit valuation)	San Francisco
Bakersfield \$205	San Jose 11.97% applied to Plan Checks. Surcharge not applied to Inspections. Cost Recovery Target is limited to 70% on the premise of an upper limit on costs attributed to development.		Anaheim
	Fresno 12.83 % applied to Plan Checks. Surcharge not applied to Inspections.		Chula Vista
	Long Beach 5.5% (+ 5.5% Tech Surcharge). Applied to Plan Checks. Surcharge does not apply to inspections.		
	Oakland 7.2% (Applied to Plan Checks and Inspections)		

Of the 11 cities benchmarked, six have a variable fee (surcharge), three do not have a fee specific to General Plan Maintenance, and two have a flat fee, including the City of San Diego. For the six cities that have a variable fee, five of those fees are a surcharge on other fees associated with planning functions such as fees for plan checks, permits, and project applications.

The proposed GPMF Surcharge closely aligns with the GPMF variable surcharge utilized by the cities of Los Angeles and San Jose, the two largest and most comparable cities to San Diego. The fee methodology and variable fee utilized in the cities of Los Angeles and San Jose also achieves the equity objective of scaling the amount of the fee to the scope of the development application and provides a mechanism to achieve a higher level of cost recovery over time. More details on the benchmarking from Los Angeles and San Jose are provided in Attachment 1 (Los Angeles) and Attachment 2 (San Jose).

**Evaluation of Nexus and San Diego City Planning Eligible Costs of Service:**

The Department reviewed the City Planning Department operations to determine which types of typical activities within the City Planning Work Program would generally be included in the cost basis of the GPMF Surcharge and which activities would be excluded. Activities included in the cost-basis necessarily have a strong nexus to long-range planning and the maintenance of the City’s General Plan.

The City Planning Department is organized into 12 operating functions. Costs and activities for each function are tracked in the City’s accounting system via Internal Orders. City Planning staff reviewed the Fiscal Year 2025<sup>1</sup> labor billing practices and expenses of each of the functions, as follows:

1	Community Planning	7	Climate Resiliency Planning
2	Housing	8	Historic and Heritage Preservation Planning
3	Mobility Planning <sup>1</sup>	9	Park Planning
4	Public Engagement	10	Infrastructure Planning
5	Environmental Review (CEQA)	11	Mapping and Information Technology Services
6	Climate Policy <sup>1</sup>	12	Fiscal and Administrative Services

<sup>1</sup> The Mobility Planning and Climate Policy functions were housed in the former Sustainability and Mobility Department in Fiscal Year 2025. For this reason, the cost analysis for these two sections is based on data from Fiscal Year 2026.

To identify the activities for inclusion in the cost-basis of the General Plan Maintenance Surcharge, each internal order for each section was reviewed against the eligibility criteria requiring a nexus to the general plan and long-range planning. Some examples of activities included and excluded from the cost-basis are listed below:

Activities generally included in the Cost Basis<sup>2</sup>

- Community Plan Updates
- Housing policies and regulations
- General Plan elements and updates
- Multiple Species Conservation Program

<sup>2</sup> Cost for activities included and excluded in the Cost Basis are defined by *Internal Orders*. See Attachment 3 for details.

- Park and conservation plans
- Staff time for relevant activities
- Technical studies
- Data systems and modeling tools
- Community engagement and outreach
- Comprehensive updates

Activities Generally Excluded from the Cost-Basis

- Project reviews reimbursed from customer fees
- Development Impact Fee program administration
- Environmental review work for other City departments
- Work generally unrelated to long-range planning or maintenance of the General Plan.

**Eligible Cost of Service Methodology:**

The cost-basis, or cost of service for the City Planning Department’s work program that is GPMF related was determined to be \$11,138,440. This was calculated by using the City’s standard user fee methodology, determining the set of example internal orders eligible for the surcharge, followed by retrieving the labor hours billed for those applicable internal orders, and then using the City’s standard Fee Analysis Workbook as provided by the Department of Finance (Attachment 4). City Planning staff applied the hourly salaries, fringe, department overhead and load rates, and applicable non-personnel expenses to arrive at the total eligible cost of service.

**Identification of the Fees for Application to the GPMF Surcharge:**

City Planning staff collaborated with the Development Services Department (DSD) to obtain a list of the numerous fees (fee codes) charged for development projects as maintained in DSD’s fee system. Upon reviewing and filtering the data provided by DSD to remove expired fees, City Planning staff identified a set of 933 active fee codes representing the numerous fees and services associated with development projects (Attachment 5). This became the list of Fee Codes reviewed by City Planning for determination of applicability to the GPMF Surcharge.

To determine which DSD fees (fee codes) would be subject to the proposed GPMF surcharge, practices learned from benchmarking were applied, and from evaluating the nexus between the General Plan, long range planning efforts and the various services represented by the numerous DSD fees. If the service represented by a given DSD fee is tied to or dependent on the availability and maintenance of the City’s General Plan, the fee was selected for application with the GPMF surcharge. In total, 235 of the 933 DSD fee codes were selected for application with the GPMF Surcharge. The eligible and selected fees are generally fees for plan checks, permits, project reviews, and administrative fees associated with these functions. The full list of fees to be subject to the GPMF Surcharge are provided in Attachment 6.

Included and Excluded Fees:

Included: Fees associated with plan checks, discretionary permits and entitlements, and development review services including community planning project reviews, heritage and biodiversity project reviews, certain historic preservation and park design and review services, and certain administrative fees associated with discretionary reviews, permits, and entitlements.

Excluded: Numerous fees were specifically excluded from the surcharge. These include fees for inspections, mechanical, electrical and plumbing inspections (MEP), code enforcement, address changes, inclusionary housing, development impact fees (DIF), project review fees for DIF, wireless communication facilities fees, and subpoena fees.

Maintenance of the Fees: Over time, the Development Services Department adds, deletes, or otherwise modifies the numerous fees associated with development activity. This large set of Development Services fees will be reviewed periodically by the City Planning Department to evaluate ongoing applicability of any added or modified fees to the GPMF Surcharge.

#### Revenue from the Applicable Fee Codes

The annual revenue from the 235 fees codes selected for application of the GPMF Surcharge is projected to be \$66.9 million in Fiscal Year 2027 (*Baseline Revenue Assumption*). Note that this figure is different from the resulting GPMF Surcharge Revenue, which is 11.25% of this amount, or \$7.5 Million as described later in this report. The assumptions and derivation of this projection are detailed in Attachment 7.

#### **Revenue Target and Cost Recovery Assessment and Calculation:**

##### Surcharge Revenue Criteria

The following criteria were used to determine the optimal revenue target for the surcharge:

- The fee cannot exceed the cost of service
- The fee is a partial recovery fee, and cannot be fully cost recoverable
- Revenue should be higher than is currently generated (\$6.2 Million), to provide an increased level of cost recovery for the City, better sustain delivery of the Department's work program, and meet the Department's revenue obligations
- Achieve a higher cost recovery target, in the 65%-75% range. Cost recovery in that range would demonstrate a balanced benefit to both new development, residents and businesses, and alignment with San Jose's 70% benchmark cost recovery target. Cost recovery of the San Diego GPMF in FY 2025 was 43% and with the current flat fee is anticipated to be 57% in FY 2026.

#### **Surcharge Proposal - Surcharge Fee Formula:**

When developing the surcharge fee, the following objectives and criteria were considered: 1) reference benchmarking data for large California cities and 2) generate at least enough revenue to achieve a sustainable level of funding for the Work Program. This approach strikes an appropriate balance of achieving improved cost recovery and allowing for potential increased reimbursements to the General Fund for City Planning Department operating costs, while – over time - also providing additional funding for planning work in a manner that is reasonably related to the burden between new development and the General Fund.

Using the Los Angeles (10%) and San Jose (11.97%) surcharge rates as benchmarks, staff tested a mid-range rate between these two benchmarks of 11.25%. The key assumption for this analysis is that the level of annual revenue that will be subject to the Surcharge is \$66.9 million (*Baseline Revenue Assumption*) as detailed in Attachment 7. Applying a surcharge of 11.25% to the *Baseline Revenue Assumption* of \$66.9 million yields revenue of \$7.5 million and a Cost Recovery Rate of 68%, calculated as follows:

$$\$66.9 \text{ M} \times 11.25\% = \$7.5 \text{ million}$$

Fee Revenue / Eligible Costs = Cost Recovery Rate

$$\$7.5 \text{ million} / \$11.1 \text{ million} = 68\%$$

Revenue of \$7.5 million is a \$1.3 million increase over current revenue (\$6.2 M). The forecasted revenue at an 11.25% surcharge represents a reasonably related balance of achieving improved cost recovery, while also – over time – providing additional funding for long-range planning within a cost recovery range that reasonably balances the burden between new development and the General Fund.

Absent a downturn in local development activity, revenue from the GPMF Surcharge would also likely increase beyond \$7.5 million after FY 2027 as the surcharge is tied to DSD fees which would likely increase annually through dynamic pricing, as DSD's operating costs increase over time. For the purposes of this study, City Planning staff did not make assumptions on annual inflationary adjustments to operating costs, DSD fees, or the development activity levels beyond Fiscal Year 2027. It should be noted that the GPMF funding for City Planning ties City Planning's budget to overall development activity. This means that if permit activity decreases, so will GPMF revenue, putting City Planning's work program at risk of significant cuts should a downturn occur.

**Timing of Revenue:**

The shift from a flat fee to the proposed surcharge affects the timing of when the “fee payment” will be collected, and when the revenue will come in. With the flat fee, the revenue arrives up front at *Project Application*, i.e. “Day 1”. With the surcharge, most of the surcharge revenue will come in as plan check fees are paid when project applications are “*deemed complete*.” For most projects, this stage is reached within a few days to about 60 days after project application, meaning there is no meaningful delay in the timing of most GPMF Surcharge revenue. However, there are some plan check fees and other project review and permit fees that are paid much later in the project life cycle, i.e. at *permit issuance*. The timing and magnitude of these payments vary considerably depending on the complexity of the project and can occur anywhere between 6 months to 2 years or longer after the project application is *deemed complete*. For this reason, staff has adjusted the revenue projections for the initial years of the Surcharge to account for this anticipated delay. A summary of the revenue projections for Fiscal Years 2027 through 2030 and the resulting impacts on overall cost recovery are provided in the table below. The details on the underlying assumptions and derivation of these projections are provided in Attachment 7.

<b>Fiscal Year</b>	<b>Projected Surcharge Revenue<sup>1</sup></b>	<b>Anticipated Cost Recovery<sup>2</sup></b>	<b>Notes</b>
2027 (Year 1)	\$6.0 M	54%	Transition Year. Current flat fee remains in effect through Oct. 31, 2026. Surcharge takes effect Nov. 1, 2026. Revenue remains below baseline as some project fees subject to the surcharge remain unpaid as they are paid later in the project review process.
2028 (Year 2)	\$6.8 M	61%	Revenue remains below baseline as some project fees subject to the surcharge remain unpaid as they are paid later in the project review process.
2029 (Year 3)	\$7.1 M	64%	Revenue increases closer to baseline as more project fees subject to the surcharge become due and are paid.
2030 (Year 4 <i>Steady State</i> )	\$7.5 M	68%	Revenue from applicable DSD fees reaches the <i>Baseline Revenue Assumption</i> of \$66.9 million resulting in GPMF Surcharge revenue of approximately \$7.5 million as all project fee subject to the surcharge become due and are paid.

<sup>1</sup> Revenue for all years in 2027 Dollars. Any subsequent increases to DSD fees subject to the surcharge are likely to increase revenue.

<sup>2</sup> Cost recovery is based on the \$11.1 million of cost derived from the Fee Study. Any change of annual cost from this assumption would change the cost recovery calculation for any given year.

As previously described, the 11.25 % Surcharge achieves steady state cost recovery of approximately 68%. However, this rate of cost recovery is not anticipated to be reached for three years, during which cost recovery is anticipated to be 54%, 61%, and 64% respectively. This range of cost recovery considers the competing objectives of revenue generation, keeping costs manageable for new development, making the fee proportionate to the complexity and impact of the projects, and achieving a reasonable related balance of the burden between new development and existing development. It also reflects the transition time necessary to transition to a new method of charging the fee.

The revenue anticipated in Year 1 (FY 2027, \$6.0 million) is about 3.2% less than the expected FY 2026 receipts from the flat fee of \$6.2 M. As detailed in Attachment 7, this is due to a combination of revenue delays early in the transition of the fee due to timing of a minority of fees subject to the GPMF Surcharge, and reasonable assumptions made related to development activity in Fiscal Year 2027 based on current permit activity reviewed. Staff expect steady state revenue to exceed current levels, made more likely by the GPMF Surcharge being linked to DSD dynamic pricing going forward.

**Proposed New Fee:**

Currently, the \$737 flat fee applies to the vast majority of permit applications – regardless of how small or large the project is. This means that a homeowner seeking a building permit to remodel their home pays the same \$737 fee as an applicant that is seeking a permit to build a large development project. With the proposed surcharge, rather than paying a flat fee, each project will be required to pay a surcharge of 11.25 % of the cost of the already-applicable plan checks, project reviews, permits, and related administrative fees (Refer to Attachment 6 for full list of applicable fees)

Small projects with nominal plan check fees will often pay less than the current flat fee of \$737. Larger projects with higher plan check fees will likely pay more than the current flat fee. So, a project with plan check fees totaling \$2,500 would pay a GPMF Surcharge amount of about \$281, which is less than the \$737 fee that would apply today. And a project with cumulative plan check fees of \$50,000 would pay a GPMF amount of about \$5,625, which would be more than the \$737 fee that would apply today. This range reflects an improvement from a flat fee and reflects the benefits received from long-range planning in a more related and equitable way.

Below are some sample project types to demonstrate potential fee impacts. It is important to note that because the actual GPMF Surcharge will be based on a percentage of the total applicable plan check and related fees, these numbers are for illustrative purposes only.

<b>Sample Project Type</b>	<b>Current Fee</b>	<b>Estimated Approximate Proposed Fee<sup>1</sup></b>
200,000 sf research and development	\$737	\$5,200 (↑)
1 ADU Home	\$737	\$420 (↓) <sup>2</sup>
Residential bathroom remodel	\$737	\$90 (↓)
2,000 sf restaurant tenant improvement	\$737	\$350 (↓)
Residential multi-family development with 400 apartment homes	\$737	\$22,500 (↑)
Residential remodel	\$737	\$20 (↓)
ADU Home Garage Conversion	\$737	\$110 (↓)
80,000 sf hotel with 100 guest rooms	\$737	\$7,700 (↑)

- 1. Fees are estimates based on sample projects. Actual fees will vary with project complexity.
- 2. Fee for ADUs will vary based on project complexity.

Additional examples using actual illustrative projects are provided in Attachment 8.

**Timing of the Fee Change:**

The GPMF Surcharge is anticipated to take effect November 1, 2026, and no earlier than 60 days after final date of passage of resolution adopting the new fee. The current flat fee of \$737 will remain in effect until the surcharge is implemented. The City Planning Department will coordinate with the Development Services Department to ensure adequate public notice of the exact date of the fee change.

**Monitoring and Future Fee Study Updates:**

GPMF revenue is regularly monitored, with any significant variances reported to the Department of Finance. The next GPMF study will be included in the City's next comprehensive User Fee study that takes place every three to five years, and it is anticipated the next study would likely occur around 2028 to 2029.

City of San Diego Strategic Plan:

This action supports all City Strategic Plan Priority Areas and Outcomes in that the long-range planning and maintenance of the City's General Plan funded by this action directly supports the production of homes, the enrichment of neighborhoods, the advancement of mobility and infrastructure, the advancement of sustainability, and the advancement of regional prosperity. This action also advances the City's Operating Principle of equity, by reforming the General Plan Maintenance Fee to make the amount of the fee proportionate to the size and complexity of development.

Fiscal Considerations:

While the surcharge will generate revenue at an estimated steady state level of \$7.5 million per year, revenue growth to this level will occur incrementally. For Year 1 (Fiscal Year 2027) revenue from the GPMF is projected to be \$6.0 million, slightly less than FY 2026 level of \$6.2 million. In Year 2 (Fiscal Year 2028), revenue is projected to reach \$6.8 million due to more projects originating in FY 2027 obtaining their project permits. In Year 3 (Fiscal Year 2029), as more projects obtain permits, revenue is expected to reach approximately \$7.1 million. By Year 4 (Fiscal Year 2030), all projects originating in Fiscal Year 2027 are assumed to obtain permits and revenue will reach a steady state level of approximately \$7.5 million. All figures are in present-day dollars and do not assume inflationary adjustments that may occur with plan check and related fees charged by the Development Services Department.

The General Plan Maintenance Fee provides funding that would otherwise be supported by the General Fund, therefore resulting in savings to the General Fund.

If approved, there will be an administrative cost associated with implementing the fee change in the Development Services Department fee system. The cost is undetermined as of the date of this report, and staff are actively working to determine the cost. The cost will be paid from the General Plan Maintenance Fund within the authorized budget appropriation limit for Fiscal Year 2027.

Charter Section 225 Disclosure of Business Interests:

N/A

Environmental Impact:

This activity is not a project pursuant to CEQA Guidelines Section 15378(b)(4) as it is a government fiscal activity which does not involve any commitment to any specific project which may result in a potentially significant physical impact on the environment. Thus, this activity is not subject to CEQA pursuant to CEQA Guidelines Section 15060(c)(3).

Climate Action Plan Implementation:

This action provides funding that in part supports Climate Action Plan implementation, which is a core component of the City's General Plan.

Equal Opportunity Contracting Information (if applicable):

N/A

Previous Council and/or Committee Actions:

This item was heard at the Land Use & Housing Committee on June 11, 2026. The Committee voted unanimously (3-0, with one member absent) to recommend Council approval. The current General Plan Maintenance Fee was updated and approved by the City Council on March 3, 2025.

Planning Commission Action:

N/A

Key Stakeholders and Community Outreach Efforts:

City staff presented to the following industry organizations: NAIOP, San Diego Regional Chamber of Commerce, and the Building Industry Association Urban Council.

City staff presented to the Community Planners Committee on May 26, 2026. The Community Planners Committee requested additional examples to better understand the impact of the fee on development projects and requested City staff to return. City staff provided the requested information by email to the chair on June 5, 2026, and continue to be available for questions.

**Heidi Vonblum**

---

Heidi Vonblum  
City Planning Director

**Casey Smith**

---

Casey Smith  
Chief Housing & Community Development  
Officer

Attachments:

1. Los Angeles Benchmarking Information
2. San Jose Benchmarking Information
3. Internal Orders Included and Excluded from the Cost-Basis
4. User Fee Calculation Workbook
5. Development Services Department Fee Codes
6. Fee List – Fees Subject to the GPMF Surcharge
7. Baseline Revenue Assumption
8. Example Projects

# Attachment 1

## Los Angeles Benchmarking Information

City Planning staff conducted benchmarking with the City of Los Angeles through a combination of internet research and various interviews conducted in the summer and fall of 2025 with the Los Angeles City Planning Department.

Effective, June 9, 2026, the Los Angeles General Plan Maintenance Fee is applied as a 10% surcharge<sup>1</sup> to building permit fees, including ministerial permits, grading permits, plan check fees, entitlements, environmental reviews, public hearing fees, and administrative reviews and appeals. The fee is not applied to field inspections.

The Los Angeles General Plan Maintenance Surcharge is used for maintenance of the City's General Plan and all associated underlying plans or elements, ordinances, and other associated planning initiatives. Fifty percent of the money received is used for costs to update the City's 35 Community Plans.<sup>2</sup>

Prior to June 9, 2026, the Los Angeles General Plan Maintenance Surcharge had been 7%. This 7% surcharge was generating \$7 Million<sup>3</sup> per year, with eligible expenses of \$18.8 Million<sup>3</sup> per year, equivalent to a cost recovery rate of 37%. As a result, Los Angeles proposed and passed an ordinance to increase the surcharge to 10% and reports that this will generate an additional \$3 Million<sup>3</sup> per year. Based on these figures, the Los Angeles General Plan Maintenance Surcharge cost recovery rate will become 53% as calculated as illustrated below:

$$\$7 \text{ M (Current Revenue)} + \$3 \text{ M (Additional Revenue)} = \$10 \text{ M Future Revenue}$$

$$\$10 \text{ M (Future Revenue)} / \$18.8 \text{ M Eligible Expense} = 53\% \text{ Anticipated Future Cost Recovery}$$

In addition to the General Plan Maintenance Surcharge, Los Angeles also applies a \$5 per instance administrative fee and a 6% IT Surcharge, known as the Automated Systems Development Surcharge<sup>4</sup>. This 6% surcharge is used for the design, acquisition, development, and implementation of automated systems for existing programs and activities of the Los Angeles Department of Planning, including, but not limited to, cost of computers and other related equipment, software, firmware, technical services and consulting services, employees' salaries, employee training, facilities support, data conversion, computer communications and computer security resources.<sup>5</sup>

<sup>1</sup>Los Angeles City Ordinance 188899, passed March 25, 2026, increased the General Plan Maintenance Surcharge from 7% to 10%, effective June 9, 2026.

<sup>2</sup>Los Angeles Municipal Code Chapter 1, Article 9, §19.16

<sup>3</sup>Office of the Los Angeles City Attorney Report to the Los Angeles City Council No. R25-0562, November 17, 2025

<sup>4</sup>Los Angeles Municipal Code §98.0418

<sup>5</sup>Los Angeles Municipal Code Chapter 67, §5.457

## Attachment 2

### San Jose Benchmarking Information

City Planning staff conducted benchmarking with the City of San Jose through a combination of internet research and interviews conducted in the summer of 2025 with the City of San Jose Planning Department.

In the City of San Jose, the General Plan Maintenance Fee is applied as a 11.97% surcharge<sup>1</sup> to building permit fees, including ministerial permits, plan check fees, entitlements, environmental reviews, public hearing fees, and administrative reviews and appeals. The fee is not applied to field inspections. Unlike Los Angeles, the San Jose fee is not applied to grading permits or appeals fees.

The San Jose fee generates roughly \$3.8 Million<sup>2</sup> per year. Staff review of the budget for the San Jose Planning, Building, and Code Enforcement Department indicates that \$8.1 Million of the department budget covers activities that would generally be eligible for funding from a General Plan Maintenance Fee.<sup>2</sup> Based on this assumption, the San Jose Fee generates revenue equivalent to 47% of the eligible budget as determined by the following calculation:

$$\text{\$3.8 M Revenue} / \text{\$8.1 M GPMF Eligible Budget} = 47\% \text{ Cost Recovery Rate}$$

The San Jose Fee a major update in 2018 and at that time the fee became known as the Citywide Planning Fee. The 2018 revision based the fee on a target cost recovery of 70%, on the assumption that 70% of costs can be attributed to new development.<sup>3</sup>

To summarize, though the intended Cost Recovery Target is 70% based on the 2018 report, the City's recent budget data indicates that the current Cost Recovery Rate is closer to 47%.

<sup>1</sup> Fiscal Year 2025-26 City of San Jose Budget, Departmental Fees & Charges, Department of Planning, Building, and Code Enforcement, page 83. <https://www.sanjoseca.gov/your-government/departments-offices/office-of-the-city-manager/budget/budget-documents/2025-2026-budget-documents/2025-2026-adopted-fees-and-charges>

<sup>2</sup>Fiscal Year 2025-26 City of San Jose Budget, Department of Planning, Building, and Code Enforcement, page 735 <https://www.sanjoseca.gov/home/showpublisheddocument/126227/638978557013370000>

<sup>3</sup> City of San Jose, Manager's Report to the Mayor and City Council dated 5/22/2018, Manager's Budget Addendum # 20.

## Attachment 3

Internal Orders Included and Excluded from the GPMF Surcharge Cost Basis  
Sorted by Operating Section

### Community Planning Section

Internal Orders Included in Eligible Cost Basis	Internal Orders Excluded from Cost Basis
ALUCP IMPLEMENTATION	NOT ASSIGNED
BICYCLE MASTER PLAN UPDATE	COLLEGE AREA DIF ADMIN
BLUEPRINT SD/CITYWIDE TPA/PEIR	GENERAL ADMINISTRATION <sup>2</sup>
	GRANT ADMINISTRATION
CALTRANS STP GRANT	HOURLY PLAN FILE REVIEW-COMMPLAN
CALTRANS STP GRANT-MATCH	PRELIM PROJECT REVIEW SINGLE DISCIPLINE
CITYWIDE TPA PEIR - BLUEPRINTSD	DSD PROJECTS
CLAIREMONT CPU TRACKING IO	COMMUNITY GROUP SUPPORT <sup>2</sup>
CLIMATE RESILIENCY PLAN	CPA & REZONE <sup>1</sup>
COLLEGE AREA CPU	GPMF BILLABLE PUBLIC ENGAGEMENT GENERAL <sup>1</sup>
UNIVERSITY CPU	PUBLIC ENGAGEMENT – GENERAL <sup>2</sup>
	PUBLIC RECORDS ACT (PRA) <sup>2</sup>
GENERAL PLAN	TRACK PRELIM PROJ REV MULTI DISCIPLINE
GPMF - BILLABLE - SGIP MID-CITY	BROWN ACT COMPLIANCE
GPMF BILLABLE HILLCREST FPA	
GPMF BILLABLE-CLAIREMONT MESA CPU	
GPMF BILLABLE-MIRA MESA CPU	
GPMF BILLABLE-UNIVERSITY CPU	
GPMF-BILLABLE-COLLEGE AREA CPU	
GPMF-BILLABLE-GENERAL PLAN MONITORING	
GPMF-BILLABLE-OM NESTOR CPU	
HILLCREST FPA	
HOMES/HOUSING PROGRAMS	
MASTER TRAILS-CCC-MATCH TRACKING	
MIRA MESA CPU	
OM NESTOR CPU	
OTAY MESA	
RANCHO BERNARDO CPU	
SANDAG REAP HAP 2 MIDCITY	
SANDAG REAP HAP 2.0 MID-CITY	
SGIP MID-CITY	
TRACKING TIME FOR COLLEGE AREA CPU	
TRACKING TIME FOR MIRA MESA CPU TOD	
TRACKING TIME FOR UNIVERSITY CPU	

<sup>1</sup> Eligible cost removed from fee basis because the cost is not directly linked to specific long-range planning initiatives or for policy considerations.

<sup>2</sup> Partially eligible cost removed from scope due to inability to directly link cost to specific long-range planning initiatives.

## Attachment 3

Internal Orders Included and Excluded from the GPMF Surcharge Cost Basis  
Sorted by Operating Section

### Housing Section

Internal Orders Included in Eligible Cost Basis	Internal Orders Excluded from Cost Basis
	NOT ASSIGNED
	ACCOUNT RESEARCH
ANNUAL LAND DEVELOPMENT CODE UPDATE	GENERAL ADMINISTRATION <sup>2</sup>
	GRANT ADMINISTRATION
GPMF-BILLABLE-ANNUAL LAND DEVEL CODE UPD	HOURLY PLAN FILE REVIEW-COMMPLAN
HOMES/HOUSING PROGRAMS	TRACK PRELIM PROJ REV MULTI DISCIPLINE
GPMF BILLABLE FOR HOMES/HOUSING PROGRAMS	DSD PROJECTS
SANDAG REAP HAP 2 SMALL SCALE HOMES	COMMUNITY GROUP SUPPORT <sup>2</sup>
CLAIREMONT CPU TRACKING IO	BROWN ACT COMPLIANCE
COLLEGE AREA CPU	PUBLIC RECORDS ACT (PRA) <sup>2</sup>
NEIGH HOMES INITIATIVE	TRACKING OF DE ANZA SPECIAL STUDY <sup>1</sup>
SANDAG REAP HAP 2.0 SMALL SCALE HOMES	GPMF BILLABLE MB PMP DE ANZA <sup>1</sup>
SANDAG REAP HAP 2 AFFORDABLE HOME DEV	PUBLIC ENGAGEMENT – GENERAL <sup>2</sup>
	SANDAG REAP HAP2 INCLUSIVE ENGAGE MATCH <sup>1</sup>
GPMF BILLABLE-UNIVERSITY CPU	GPMF BILLABLE PUBLIC ENGAGEMENT GENERAL <sup>1</sup>
	SANDAG REAP HAP 2 INCLUSIVE ENGAGEMENT <sup>1</sup>
GPMF BILLABLE HILLCREST FPA	
COMMUNITY PLANNING	
AFFORD HOME MASTER PLAN	
HOMES ANNUAL REPORT	
SANDAG REAP HAP 2.0 AFFORDABLE HOME DEV	

1 Eligible cost removed from fee basis because the cost is not directly linked to specific long-range planning initiatives or for policy considerations.

2 Partially eligible cost removed from scope due to inability to directly link cost to specific long-range planning initiatives.

### Attachment 3

Internal Orders Included and Excluded from the GPMF Surcharge Cost Basis  
Sorted by Operating Section

### Climate Resiliency Planning

Internal Orders Included in Eligible Cost Basis	Internal Orders Excluded from Cost Basis
BLUEPRINT SD/CITYWIDE TPA/PEIR	NOT ASSIGNED
CITYWIDE TPA PEIR - BLUEPRINTSD	DSD - ENVIRONMENTAL REVIEW SPPT-MUNI
CLAIREMONT CPU TRACKING IO	HOURLY PLAN FILE REVIEW-BIODIVERSITY
COLLEGE AREA CPU	MINISTERIAL PTS REVIEW
GPMF - BILLABLE - SGIP MID-CITY	PRELIM PROJECT REVIEW SINGLE DISCIPLINE
GPMF BILLABLE-CLAIREMONT MESA CPU	DSD PROJECTS
GPMF BILLABLE-VERNAL POOL HCP	PUBLIC RECORDS ACT (PRA) <sup>2</sup>
GPMF-BILLABLE-MULTIPLE SPECIES CONSERVAT	
MASTER TRAILS-CCC-MATCH TRACKING	
MULTIPLE SPECIES CONSERVATION PROGRAM	
NFWF COSD COASTAL RESILIENCE MASTER PLAN	
OM NESTOR CPU	
SGIP MID-CITY	
TRACKING TIME FOR VPHCP	
UNIVERSITY CPU	

- 1 Eligible cost removed from fee basis because the cost is not directly linked to specific long-range planning initiatives or for policy considerations.
- 2 Partially eligible cost removed from scope due to inability to directly link cost to specific long-range planning initiatives.

### Attachment 3

Internal Orders Included and Excluded from the GPMF Surcharge Cost Basis  
Sorted by Operating Section

### Environmental Review - CEQA

Internal Orders Included in Eligible Cost Basis	Internal Orders Excluded from Cost Basis
BLUEPRINT SD/CITYWIDE TPA/PEIR	NOT ASSIGNED
CEQA PLANNING	MINISTERIAL PTS REVIEW
CITYWIDE TPA PEIR - BLUEPRINTSD	TRACKING FOR ENVIRONMENTAL REVIEW
CLAIREMONT CPU TRACKING IO	HOURLY PLAN FILE REVIEW-BIODIVERSITY
CLIMATE RESILIENCY PLAN	UUP- ENVIRONMENTAL REVIEW & COMPLIANCE
COLLEGE AREA CPU	CEQA IMPACT REPORT FOR AIRPORTS
GPMF - BILLABLE - SGIP MID-CITY	PLANNING DEPT SVCS TO TSW
GPMF BILLABLE-CLAIREMONT MESA CPU	DSD - ENVIRONMENTAL REVIEW SPPT-MUNI
GPMF-BILLABLE-CEQA TOOLKIT & DATA	DSD PROJECTS
GPMF-BILLABLE-COLLEGE AREA CPU	PUBLIC RECORDS ACT (PRA) <sup>2</sup>
GPMF-BILLABLE-MOBILITY MASTER PLAN	SAN DIEGO CLIMATE RESILIENCY PHASE 2 <sup>1</sup>
GPMF-BILLABLE-MULTIPLE SPECIES CONSERVAT	TRACKING OF DE ANZA SPECIAL STUDY <sup>1</sup>
HILLCREST FPA	
MASTER TRAILS- CCC- PERSONNEL	
MASTER TRAILS-CCC-MATCH TRACKING	
MOBILITY MASTER PLAN	
MULTIPLE SPECIES CONSERVATION PROGRAM	
NFWF COSD COASTAL RESILIENCE MASTER PLAN	
SANDAG REAP HAP 2.0 MID-CITY	
SD COASTAL RESILIENCE GRANT TRACKING	
SGIP MID-CITY	
TRACKING TIME FOR COLLEGE AREA CPU	
TRAILS MASTER PLAN LABOR TRACKING	
UNIVERSITY CPU	

1 Eligible cost removed from fee basis because the cost is not directly linked to specific long-range planning initiatives or for policy considerations.

2 Partially eligible cost removed from scope due to inability to directly link cost to specific long-range planning initiatives.

### Attachment 3

Internal Orders Included and Excluded from the GPMF Surcharge Cost Basis  
Sorted by Operating Section

### Heritage Preservation Planning

Internal Orders Included in Eligible Cost Basis	Internal Orders Excluded from Cost Basis
	NOT ASSIGNED
CLAIREMONT CPU TRACKING IO	GENERAL ADMINISTRATION
COLLEGE AREA CPU	HISTORICAL NOMINATIONS REVIEW
GPMF - BILLABLE - SGIP MID-CITY	HOURLY PLAN FILE REVIEW-HERITAGE
GPMF BILLABLE-PRESERVATIO & PROGRESS	MILLS ACT APPLICATION
GPMF-BILLABLE-COLLEGE AREA CPU	MILLS ACT MONITORING
	MILLS ACT PROGRAM
HISTORIC SURVEYS	MINISTERIAL PTS REVIEW
MASTER TRAILS-CCC-MATCH TRACKING	SOUTHWEST VILLAGE
NFWF COSD COASTAL RESILIENCE MASTER PLAN	UUP- ENVIRONMENTAL REVIEW & COMPLIANCE
POTENTIAL HISTORIC DIST FORMATION-NP&GH	DSD PROJECTS
SANDAG REAP HAP 2 MIDCITY	HISTORIC SITE BOARD
SANDAG REAP HAP 2.0 MID-CITY	BROWN ACT COMPLIANCE
SGIP MID-CITY	

- 1 Eligible cost removed from fee basis because the cost is not directly linked to specific long-range planning initiatives or for policy considerations.
- 2 Partially eligible cost removed from scope due to inability to directly link cost to specific long-range planning initiatives.

### Attachment 3

Internal Orders Included and Excluded from the GPMF Surcharge Cost Basis  
Sorted by Operating Section

### Park Planning

Internal Orders Included in Eligible Cost Basis	Internal Orders Excluded from Cost Basis
	NOT ASSIGNED
CLAIREMONT CPU TRACKING IO	DSD PROJECTS
	BROWN ACT COMPLIANCE
	TRACKING OF DE ANZA SPECIAL STUDY <sup>1</sup>
UNIVERSITY CPU	PARKS MASTER PLAN TRACKING <sup>1</sup>
COLLEGE AREA CPU	BALBOA PARK MASTER PLAN <sup>1</sup>
HILLCREST FPA	PUBLIC RECORDS ACT (PRA) <sup>2</sup>
SGIP MID-CITY	GPMF BILLABLE MB PMP DE ANZA <sup>1</sup>
CHOLLAS CREEK REGIONAL PARK MASTER PLAN	GPMF BILLABLE PARKS MASTER PLAN <sup>1</sup>
ANNUAL LAND DEVELOPMENT CODE UPDATE	GPMF BILLABLE BALBOA PARK MASTER PLAN <sup>1</sup>
TRAILS MASTER PLAN LABOR TRACKING	
MASTER TRAILS-CCC-MATCH TRACKING	
SANDAG REAP HAP 2.0 MID-CITY	
GPMF BILLABLE-CLAIREMONT MESA CPU	
GPMF BILLABLE-UNIVERSITY CPU	
GPMF-BILLABLE-COLLEGE AREA CPU	
GPMF BILLABLE HILLCREST FPA	
CITYWIDE TPA PEIR - BLUEPRINTSD	
GPMF - BILLABLE - SGIP MID-CITY	
GPMF-BILLABLE-CHOLLAS CREEK REGIONAL PMP	
GPMF-BILLABLE-ANNUAL LAND DEVEL CODE UPD	
SANDAG REAP HAP 2 MIDCITY	
MASTER TRAILS- CCC- PERSONNEL	
GPMF BILLABLE-CLIMATE RESILIENCY PLAN	
GPMF BILLABLE-MIRA MESA CPU	
GPMF BILLABLE-MIDWAY, OLD TWN CPU	

1 Eligible cost removed from fee basis because the cost is not directly linked to specific long-range planning initiatives or for policy considerations.

2 Partially eligible cost removed from scope due to inability to directly link cost to specific long-range planning initiatives.

### Attachment 3

Internal Orders Included and Excluded from the GPMF Surcharge Cost Basis  
Sorted by Operating Section

### Public Engagement

Internal Orders Included in Eligible Cost Basis	Internal Orders Excluded from Cost Basis
CLIMATE RESILIENCY PLAN	NOT ASSIGNED
SANDAG REAP HAP 2 MIDCITY	PUBLIC ENGAGEMENT – GENERAL <sup>2</sup>
	SANDAG REAP HAP2 INCLUSIVE ENGAGE MATCH <sup>1</sup>
	GPMF BILLABLE PUBLIC ENGAGEMENT GENERAL <sup>1</sup>
	SANDAG REAP HAP 2 INCLUSIVE ENGAGEMENT <sup>1</sup>

- 1 Eligible cost removed from fee basis because the cost is not directly linked to specific long-range planning initiatives or for policy considerations.
- 2 Partially eligible cost removed from scope due to inability to directly link cost to specific long-range planning initiatives.

## Attachment 3

Internal Orders Included and Excluded from the GPMF Surcharge Cost Basis

Sorted by Operating Section

### Mobility

Internal Orders Included in Eligible Cost Basis	Internal Orders Excluded from Cost Basis
BICYCLE MASTER PLAN UPDATE	NOT ASSIGNED
CALTRANS STP GRANT	COMPLETE STREETS UNIFYING POLICY <sup>1</sup>
CHOLLAS CREEK REGIONAL PARK MASTER PLAN	DOWNTOWN COMMUNITY PARKING DISTRICT
	GENERAL ADMINISTRATION <sup>2</sup>
CLAIREMONT CPU TRACKING IO	GRANT ADMINISTRATION
COLLEGE AREA CPU	LA SEMILLA GRANT - CITY PLANNING
GPMF - BILLABLE - SGIP MID-CITY	TRACKING - TRANSPORT DEPT PROJ SUPPORT
GPMF - COASTAL RESILIENCY MASTER PLAN	TRANSPORTATION DEPT PROJECT SUPPORT
GPMF BILLABLE-BARRIO LOGAN CPU	CICLODIAS PILOT PROGRAM
GPMF BILLABLE-CEQA THRESHOLDS	GPMF ADVISORY BOARD MANAGEMENT <sup>1</sup>
GPMF BILLABLE-CLAIREMONT MESA CPU	GPMF BILLABLE-BALBOA PARK MASTER PLAN <sup>1</sup>
GPMF BILLABLE-CLIMATE RESILIENCY PLAN	GPMF SAFE STREETS FOR ALL SAN DIEGANS <sup>1</sup>
GPMF BILLABLE-MIDWAY, OLD TWN CPU	PUBLIC RECORDS ACT (PRA) <sup>2</sup>
GPMF BILLABLE-MIRA MESA CPU	SAFE STREETS FOR ALL SAN DIEGANS
GPMF BILLABLE-UNIVERSITY CPU	SANDAG NEX GEN RAPID ADVANCED PLANNING <sup>1</sup>
	TRACKING - REGIONAL COORDINATION <sup>1</sup>
GPMF-BILLABLE BICYCLE MASTER PLAN UPDATE	
GPMF-BILLABLE-ANNUAL LAND DEVEL CODE UPD	
GPMF-BILLABLE-CHOLLAS CREEK REGIONAL PMP	
GPMF-BILLABLE-COLLEGE AREA CPU	
GPMF-BILLABLE-MOBILITY MASTER PLAN	
GPMF-CAP IMPLEMENTATION	
GPMF-REGIONAL COORDINATION	
GPMF-STREET DESIGN MANUAL	
MOBILITY MASTER PLAN	
SANDAG REAP HAP 2.0 MID-CITY	
SGIP MID-CITY	
UNIVERSITY CPU	

1 Eligible cost removed from fee basis because the cost is not directly linked to specific long-range planning initiatives or for policy considerations.

2 Partially eligible cost removed from scope due to inability to directly link cost to specific long-range planning initiatives.

## Attachment 3

Internal Orders Included and Excluded from the GPMF Surcharge Cost Basis  
Sorted by Operating Section

### Climate Policy

Internal Orders Included in Eligible Cost Basis	Internal Orders Excluded from Cost Basis
GPMF BILLABLE-CLIMATE RESILIENCY PLAN	NOT_ASSIGNED
GPMF-CAP IMPLEMENTATION	CICLOSDIAS PILOT PROGRAM
GPMF-CAP REPORTING	GPMF ADVISORY BOARD MANAGEMENT <sup>1</sup>
GPMF-CLIMATE REPORTING	GPMF BENCHMARKING <sup>1</sup>
SD - COASTAL CONSERVANCY - CRMP	GPMF BUILDING PERFORMANCE STANDARDS <sup>1</sup>
TRACKING - CAP IMPLEMENTATION	GPMF CLIMATE EQUITY <sup>1</sup>
TRACKING - CAP REPORTING	GPMF DECARBONIZATION ROADMAP <sup>1</sup>
	GPMF REACH CODE <sup>1</sup>
	PUBLIC RECORDS ACT (PRA) <sup>2</sup>

### Public Spaces

Internal Orders Included in Eligible Cost Basis	Internal Orders Excluded from Cost Basis
BILLABLE GPMF-ENVIRONMENTAL JUSTICE	NOT_ASSIGNED
	CIVIC ENHANCEMENT SLA
CHILD DESIGN GUIDE DELIVERABLE 1	GENERAL ADMINISTRATION <sup>2</sup>
CHILD FRIENDLY DESIGN GUIDE	HOURLY PLAN FILE REVIEW-DIF
GENERAL PLAN	HOUSING TRUST FUND SERVICES (FF)
GPMF BILLABLE PUBLIC ENGAGEMENT GENERAL	OM LUMINA REIMB AGREEM
GPMF-BILLABLE-PARTNERING FOR PROGRESS	OM-BROWN FIELD REDEVELOPMENT
MASTER TRAILS- CCC- PERSONNEL	PLANNING SERVICES TO FAC FINANCING
MASTER TRAILS-CCC-MATCH TRACKING	RTCIP ADMINISTRATION
	SOUTHWEST VILLAGE
	DIF FUNDS
	DSD PROJECTS
	BROWN ACT COMPLIANCE
	PUBLIC RECORDS ACT (PRA) <sup>2</sup>
	SANDAG REAP HAP 2.0 DIF ASSISTANCE PILOT

1 Eligible cost removed from fee basis because the cost is not directly linked to specific long-range planning initiatives or for policy considerations.

2 Partially eligible cost removed from scope due to inability to directly link cost to specific long-range planning initiatives.

### Attachment 3

Internal Orders Included and Excluded from the GPMF Surcharge Cost Basis  
Sorted by Operating Section

### Mapping and Information Technology Services Section

Internal Orders Included in Eligible Cost Basis	Internal Orders Excluded from Cost Basis
ANNUAL LAND DEVELOPMENT CODE UPDATE	NOT ASSIGNED
	GENERAL ADMINISTRATION <sup>2</sup>
BILLABLE GPMF-ENVIRONMENTAL JUSTICE	GRANT ADMINISTRATION
CITY-WIDE VERNAL POOL HCP SUPPORT	PLANNING SERVICES TO FAC FINANCING
CLAIREMONT CPU TRACKING IO	RTCIP ADMINISTRATION
CLIMATE RESILIENCY PLAN	DIF FUNDS
	GPMF BILLABLE BALBOA PARK MASTER PLAN <sup>1</sup>
GENERAL PLAN	GPMF BILLABLE CPA & REZONE <sup>1</sup>
GENERAL PLAN - HOUSING ELEMENT	BALBOA PARK MASTER PLAN <sup>1</sup>
GPMF - BILLABLE - SGIP MID-CITY	CPA & REZONE <sup>1</sup>
GPMF BILLABLE FOR HOMES/HOUSING PROGRAMS	HISTORIC SITE BOARD
GPMF BILLABLE HILLCREST FPA	MIDWAY EIFD - TRACKING
GPMF BILLABLE-CLAIREMONT MESA CPU	PUBLIC RECORDS ACT (PRA) <sup>2</sup>
GPMF BILLABLE-CLIMATE RESILIENCY PLAN	
GPMF BILLABLE-HISTORIC DISTRICTS	
GPMF BILLABLE-PARKS MASTER PLAN	
GPMF BILLABLE-UNIVERSITY CPU	
GPMF BILLABLE-VERNAL POOL HCP	
GPMF-BILLABLE-ANNUAL LAND DEVEL CODE UPD	
GPMF-BILLABLE-CHOLLAS CREEK REGIONAL PMP	
GPMF-BILLABLE-MITS DATA GOV IMPLEMENT	
GPMF-BILLABLE-MSCP TECHNOLOGY OVERHAUL	
GPMF-BILLABLE-MULTIPLE SPECIES CONSERVAT	
HILLCREST FPA	
HOMES/HOUSING PROGRAMS	
MITS DATA GOV IMPLEMENT	
MSCP TECHNOLOGY OVERHAUL	
MULTIPLE SPECIES CONSERVATION PROGRAM	
PARK NEEDS INDEX LABOR TRACKING	
PARKS MASTER PLAN TRACKING	
PLN-LDC-UPDATES TO LAND	
RANCHO BERNARDO CPU	
SANDAG REAP HAP 2 MIDCITY	
SANDAG REAP HAP 2.0 MID-CITY	

1 Eligible cost removed from fee basis because the cost is not directly linked to specific long-range planning initiatives or for policy considerations.  
2 Partially eligible cost removed from scope due to inability to directly link cost to specific long-range planning initiatives.

### Attachment 3

Internal Orders Included and Excluded from the GPMF Surcharge Cost Basis

Sorted by Operating Section

<b>Mapping and Information Technology Services Section - Continued</b>	
<b>Internal Orders Included in Eligible Cost Basis</b>	<b>Internal Orders Excluded from Cost Basis</b>
SGIP MID-CITY	
TRACKING TIME FOR VPHCP	
TRACKING TIME FOR COLLEGE AREA CPU	
TRACKING TIME FOR UNIVERSITY CPU	
TRAILS MASTER PLAN LABOR TRACKING	
UNIVERSITY CPU	

### Fiscal and Administrative Services Section

All costs from this section are either included in overhead or are excluded from the Cost Basis.

Fee Description	Explanation for why a fee is not 100% cost recoverable*	Volume Change Explanation**	Fee Amount Change Explanation***	Legal Authority	Fiscal Year of Last Revision	Fee Amount	Total Cost (from Fee Cost Recovery Calculations tab)	Volume of Fees	Actual Revenues Collected***	Cost Recovery %	Fee Category Level (I, II or III)	Fee Amount	Projected Volume of Fees	Projected Annual Revenue	Cost Recovery %	Fee Amount for 100% Cost Recovery
The General Plan Maintenance Fee (GPMF) was adopted in 1991 (R-278187) as a long-range planning cost recovery mechanism. The GPMF currently applies to permit applications for seven permit types. The revenues collected are used to support the department Work Program to update/amend planning policy documents such as: City-initiated General Plan amendments, community plan updates, mobility plans, City-initiated specific plans, environmental policies, park plans, and housing initiatives. The GPMF is a flat fee currently set at \$737 (FY26) per permit application.	REQUIRED*	REQUIRED*	REQUIRED*	R-278187; CA Gov Code § 65104	2025	\$575.11	\$1,322.23	8,424	\$4,844,726.64	43%	II	11.25%	66,897,310	\$7,525,947	68%	\$11,138,440.39

See explanation on row 23      See explanation on row 23      See explanation on row 23

In FY25, the GPMF fee was \$548 from P1 - P9. Fee increased to \$737 in P10. \$575.11 used as average per fee collected

, an explanation is required.  
 m actuals to proposed, an explanation is required.  
 current to proposed, an explanation is required.  
 le purposes only. The data may not necessarily match the actual data.  
 numbers unless audited numbers become available.

Explanation for why a fee is not 100% cost recoverable*	Volume Change Explanation**	Fee Amount Change Explanation***
The City has historically recognized that there is both a private and public benefit from updated/amended planning policy documents.	The volume of fees is changing because the basis for applying the fee is different under the new structure. Previously, the flat fee was applied once per permit type (8,424 permits last year). Under the new approach, the fee will be applied as a surcharge on specific plan check fees rather than on permits, meaning the number of fee occurrences will reflect the number of applicable planning fee transactions instead of the number of permits. As a result, the volumes are not directly comparable, since the methodology is shifting from a permit-based charge to a fee-based surcharge.	The structure of the fee is changing—moving from a flat fee to a percentage-based surcharge applied to certain planning-related fees. This approach improves equity by aligning the fee with the scale and complexity of a project, so smaller projects generally pay less while larger, more complex projects contribute proportionally more.

Fee Title	Benchmarking conducted? (YES/NO)	If No Benchmarking was conducted: Why?	Legal Authority	Fiscal Year of Last Revision	FY 2026 Actual or Current	FY 2027 Proposed	San Jose	Los Angeles	Fresno
GPMF	YES	NOT REQUIRED	R-278187; CA Gov Code § 65104	2025	\$737.00	11.25%	11.97%	10% + \$5 admin fee + 6% IT Surcharge	12.83%

BA #:	1619	Fee Title:	General Plan Maintenance Fee	Load Rate:	15.5%
BA Name:	City Planning	Legal Authority:	R-278187; CA Gov Code § 65104	Overhead Rate:	120.6%
Contact:	Armando Dominguez	Fee Description:	The General Plan Maintenance Fee (GPMF) was adopted in 1991 (R-278187) as a long-range planning cost recovery mechanism. The GPMF currently applies to permit applications for seven permit types. The revenues collected are used to support the department Work Program to update/amend planning policy documents such as: City initiated General Plan amendments, community plan updates, mobility plans, City-initiated specific plans, environmental policies, park plans, and housing initiatives. The GPMF is a flat fee currently set at \$737 (FY26) per permit application.	CI #:	416158
Date:	5/17/2026			CI Name:	Appl Fee Xfer-Plann

PE Costs		A	B	C	D	E	F	G	H	I	J
Job Class	Job Code	Direct Cost						Indirect Cost			Total Cost
		Labor Hours per Service Occurrence (Hours)	Hourly Salary Rate	Labor Cost (Hourly Rate x Hours)	Estimated Hourly Fringe	Fringe Cost (Estimated Hourly Fringe x Hours)	Direct Cost (Labor Cost + Fringe)	Labor Load (Labor Cost x Labor Load)	Dept/City Overhead (Labor Cost + Labor Load) x Department/City Overhead	Fringe Load (Fringe x Labor Load)	
		1 min = 0.01667 1hr =1.00		(A x B)		(A x D)	(C + E)	(C x Load Rate %)	((C + G) x OH %)	(E x load rate %)	
Program Manager	2270	1,042.63	\$86.25	\$89,926.84	\$47.51	\$49,535.35	\$139,462.19	\$13,938.66	\$125,261.79	\$7,677.98	\$286,340.62
Program Coordinator	2282	1,577.91	\$76.13	\$120,126.29	\$38.46	\$60,686.42	\$180,812.71	\$18,619.57	\$167,327.51	\$9,406.40	\$376,166.19
Development Project Manager 3	1186	5,933.80	\$75.72	\$449,307.34	\$45.66	\$270,937.31	\$720,244.65	\$69,642.64	\$625,853.67	\$41,995.28	\$1,457,736.24
Senior Planner	1872	17,947.96	\$62.14	\$1,115,286.23	\$34.21	\$613,999.71	\$1,729,285.94	\$172,869.37	\$1,553,515.65	\$95,169.96	\$3,550,840.91
Associate Planner	1227	11,383.58	\$53.31	\$606,858.65	\$23.86	\$271,612.22	\$878,470.87	\$94,063.09	\$845,311.62	\$42,099.89	\$1,859,945.47
Assistant Planner	1175	50.38	\$44.24	\$2,228.81	\$15.87	\$799.53	\$3,028.34	\$345.47	\$3,104.58	\$123.93	\$6,602.31
Landscape Designer	1638	1,814.00	\$68.80	\$124,803.20	\$24.39	\$44,243.46	\$169,046.66	\$19,344.50	\$173,842.12	\$6,857.74	\$369,091.01
Senior Management Analyst	1106	-	\$53.43	\$0.00	\$37.56	\$0.00	\$0.00	\$0.00	\$0.00	\$0.00	\$0.00
Associate Management Analyst	1218	-	\$47.66	\$0.00	\$34.71	\$0.00	\$0.00	\$0.00	\$0.00	\$0.00	\$0.00
Senior Traffic Engineer	1878	3,274.38	\$76.39	\$250,129.89	\$66.00	\$216,109.08	\$466,238.97	\$38,770.13	\$348,413.43	\$33,496.91	\$886,919.44
Associate Engineer-Traffic	1233	4,259.13	\$66.77	\$284,382.11	\$44.26	\$188,509.09	\$472,891.20	\$44,079.23	\$396,124.37	\$29,218.91	\$942,313.71
Assistant Engineer-Traffic	1207	2,083.26	\$57.09	\$118,933.31	\$22.34	\$46,540.03	\$165,473.34	\$18,434.66	\$165,665.78	\$7,213.70	\$356,787.48
Senior Civil Engineer	1855	81.80	\$77.00	\$6,298.60	\$68.80	\$5,627.84	\$11,926.44	\$976.28	\$8,773.51	\$872.32	\$22,548.55
Associate Engineer-Civil	1221	-	\$66.53	\$0.00	\$38.64	\$0.00	\$0.00	\$0.00	\$0.00	\$0.00	\$0.00
Information Systems Analyst 2	1348	26.00	\$49.63	\$1,290.38	\$25.49	\$662.74	\$1,953.12	\$200.01	\$1,797.41	\$102.72	\$4,053.26
Geographic Info Systems Analyst 4	1144	787.70	\$59.31	\$46,718.49	\$33.74	\$26,577.00	\$73,295.49	\$7,241.37	\$65,075.59	\$4,119.44	\$149,731.88
Geographic Info Systems Analyst 2	1142	558.70	\$47.12	\$26,325.94	\$17.88	\$9,989.56	\$36,315.50	\$4,080.52	\$36,670.19	\$1,548.38	\$78,614.59
		50,821.23		\$3,242,616.08	\$619.38	\$1,805,829.34	\$5,048,445.42	\$502,605.49	\$4,516,737.22	\$279,903.55	\$10,347,691.68

NPE Description/Methodology	NPE charged to fund 200728 (GPMF) and Grants	NPE	\$ 790,748.71
			\$ -
Notes:			\$ 11,138,440.39

\* These are reflective of Standard Hourly Rates, Non Standard Hourly Rates will need to be calculated differently. Please contact your DoF Liaison if this calculation is needed.

	<b>FY27 Total Cost</b>
	\$ 11,138,440.39
NPE %	7.10%
Salary PE %	74.18%
Fringe PE%	18.73%
TOTAL	100%

Fiscal Year 2022				Fiscal Year 2023				Fiscal Year 2024				Fiscal Year 2025			
Fee Amount	Revenue	Annual Change	% of Annual Change	Fee Amount	Revenue	Annual Change	% of Annual Change	Fee Amount	Revenue	Annual Change	% of Annual Change	Fee Amount	Revenue	Annual Change	% of Annual Change
\$ 459.00	\$ 3,644,508			\$ 496.00	\$ 4,360,138	\$ 715,630	19.6%	\$ 528.00	\$ 4,092,541	\$ (267,597)	-6.1%	\$548/\$737	\$ 4,844,726	\$ 752,186	18.4%

## Attachment 5

### Listing of Active Fee Codes associated with Development Project Review

Fee Type ID	FT Description
1234	DIF-Golden Hill Urban Cmnty
1235	DIF-North Park Urban Cmnty
1236	DIF-Linda Vista Urban Cmnty
1237	DIF-Mid City Urban Cmnty
1238	DIF-Navajo
1239	DIF-Midway/Pacific Hwy
1240	DIF-Pacific Beach
1241	DIF-Peninsula Urban Cmnty
1242	DIF-Skyline Paradise Hills
1243	DIF-Southeastern San Diego
1244	DIF-Uptown Urban Cmnty DIF-Downtown/Centre City
1245	
1246	DIF-La Jolla/La Jolla Shores
1247	DIF-Ocean Beach Urban Cmnty
1248	DIF-Otay Mesa/Nestor
1249	DIF-San Ysidro Urban Cmnty
1250	DIF-College Area Urban Cmnty
1251	DIF-Clairemont Mesa
1252	DIF-Mission Beach
1253	DIF-Old San Diego
1254	DIF-Serra Mesa Urban Cmnty
1255	DIF-Torrey Pines
1256	DIF-University City South
1257	DIF-Mission Valley
1258	DIF-Kearny Mesa
1259	FBA-North University City
1261	FBA-Sabre Springs
1262	FBA-Rancho Penasquitos
1264	FBA-Mira Mesa
1265	FBA-Scripps Miramar Ranch
1267	FBA-Del Mar Mesa (Sub 5)
1268	FBA-Pacific Highlands Ranch
1269	FBA-Black Mountain Ranch
1358	Housing Trust Fund
1374	Seismic Fee ( Bldg Permit)
1656	Deposit Account
1732	C&D Deposit-NonRes New

## Attachment 5

1892	C&D Deposit-Demolition
1933	C&D Deposit-Res Alteratn
2109	C&D Deposit-Residential New
2284	C&D Deposit-NonRes Alteration
2347	General Plan Maintenance
2385	Mapping
2765	DIF-Black Mountain Ranch
2768	DIF-Del Mar Mesa
2769	DIF-Mira Mesa
2770	DIF-North University City
2773	DIF-Pacific Highlands Ranch
2774	DIF-Rancho Encantada
2775	DIF-Rancho Penasquitos
2776	DIF-Sabre Springs
2777	DIF-Scripps Miramar Ranch
2778	DIF-Tierrasanta
2779	DIF-Torrey Highlands
2811	DIF-Barrio Logan
2812	DIF-Fairbanks Ranch
2813	DIF-Kearny Mesa Transport
2816	DIF-Rancho Bernardo
2817	DIF-San Pasqual Valley
2818	DIF-Subarea 2
2821	FBA-Rancho Encantada
2822	FBA-Torrey Highlands
2956	Appeal Fee
3026	News Rack Permit Fee
3198	Residential High Occupancy Fee
3199	RTCIP Multi Family
3200	RTCIP Single Family
3220	LeadHaz Prevention & Control
3225	Furnace (FAU)
3227	Heater-Unit/Radiant
3235	Water Heater
3238	Appliance Vent/Chimney
3243	Circuits 15-45 Amps
3244	Circuits 50-200 Amps
3246	Circuits 450-1,000 Amps
3247	Circuits 1,200 Amps or Larger
3253	Generator Only
3254	Conduit and J Box Only
3255	Specialized Occupancy
3260	Chiller

## Attachment 5

3261	Cooling Tower
3264	Variable Air Volume Box
3266	Exhaust Fan
3600	Spec Insp Test Lab Cert
3601	Spec Insp Agency Cert
3616	Mobilehome Awning
3618	Mobilehome Found Install
3619	Mobilehome Porch
3620	Reinsp Fee-Mobile Home
3621	Mobilehome Carport
3628	Express Plan Check Admin Fee
3632	Prelim Rvw-Single
3638	Addressing Fee
3641	Temporary Use Permits
3649	Fee Collected-Other Agcy/Dept
3675	EMRA Only
3781	Spec Insp Cert Renewal
3785	Recordation Fee-County
3800	Parking Meters Removed
3802	Public Arts Fee
3860	HAF Mitigation
3865	HAF Administration
3942	DSD Administrative Fee
3956	BuildgStand Surcharge SB1473
3960	DIF-Carmel Valley Consolidated
3961	FBA-Carmel Valley Consolidated
3964	Hrly-Code Enf Inspector
3965	Hrly-Code Enf Sr Planner
3966	Deposit Account (System)
3972	Certificate of Occupancy Proj
3978	Addressing Special Serv Proj
3981	Permit Extension-DSD
4026	Penasquitos Lagoon-Area Graded
4027	Penasquitos Lagoon-Area Imperv
4406	News Rack Late Fee (Months)
4407	News Rack Fee (Pro-Rated)
4408	Hrly-TSW Insp
4409	Hrly-TSW Insp After Hours
4422	Return Payment Processing Fee
4427	Hrly-DSD Subpoena Research
4428	Subpoena Copies (> Letter Size)
4432	Close Out Fee
4433	Dev Contribution-Park

Attachment 5

4434	Dev Contribution-ROW
4435	Dev Contribution-Fire
4436	Dev Contribution-Police
4437	Dev Contribution-Utilities
4438	Dev Contribution-Unspecified
4441	Spec Inspector Each Category
4452	Construc Mat Test Lab App
4453	Construc Mat Test Lab Cert
4459	Prop Value Protect Ordinance
4460	FBA/DIF Deferral Agrmt
4467	DIF-Otay Mesa
4468	FBA-Otay Mesa
4469	Street Damage Fee 2014
4470	Hrly-CE Subpoena Research
4471	Subpoena Copies(>LetterSize-CE
4472	Subpoena Copies-CompactDisc-CE
4473	Application Extension-Project
4480	Transportation-Single Trip
4481	Transportation-Cont. 6 mos.
4484	C&D Deposit-Res Alteratn CORR
4485	Construction Noise Permit
4486	Sidewalk Cafe Annual Inspectio
4487	DIF-Encanto
4496	Master Plan Est-SDU/DUP (P)
4498	High Rise (P)
4509	Res-SDU/DUP (P)
4510	Res-SDU/DUP Add/Remodel (P)
4517	Warehouse/Self-Storage (P)
4518	Sidewalk Café-Building (P)
4539	High Rise (I)
4547	Res-SDU/DUP (I)
4548	Res-SDU/DUP Add/Remodel (I)
4555	Warehouse/Self-Storage (I)
4556	Sidewalk Café-Building (I)
4567	Boiler
4568	Condensing Unit for HVAC
4569	Dryer Vent
4570	Evaporative Cooler-Makeup Air
4571	Exhaust System (Garage)
4572	Fan Coil Unit
4573	Gas System Leak Repair
4574	Gas System/Meter
4575	Heat Pump-Pack Unit

## Attachment 5

4576	Hood Type I
4577	Hotel New-Mech
4578	MDU New-Mech
4579	MDU Remodel-Mech
4580	Non Res Shell-Mech
4581	Non Res Tenant Improv-Mech
4582	Walk-In Cooler/Condenser
4583	MDU New-Plumbing
4585	App/Cert/Renewal Test Agency
4586	Demolition/Removal Permit (I)
4588	Electrical Service New MDU
4589	Temp Pole (Construction Power)
4590	EV Systems-Non Res/MDU (P)
4591	EV Systems-Non Res/MDU (I)
4592	Graywater Systems (P)
4594	PVS-Template SDU/DUP/TH (P)
4595	PVS-Template SDU/DUP/TH (I)
4596	PVS-Non Res/MDU (P)
4597	PVS-Non Res/MDU (I)
4598	App/Cert/Renewal Test Lab
4599	Backflow Preventor
4600	Building Drain
4601	Grease Trap/Interceptor
4602	Hotel New-Plumbing
4603	Laboratory w/out Rest Rooms
4604	MDU Remodel-Plumbing
4605	Non Res Kitchen
4606	Non Res Rest Rooms
4607	Non Res Shell w/out Rest Rooms
4608	Non Res TI-No RestRms/Kitchen
4609	Parking Garages-Plumbing
4610	Private Utility-Sewer
4611	Private Utility-Water
4612	Reclaimed Water System
4613	SDU/DUP/TH Kitchen/Bath Remdl
4614	Sewage Ejector
4615	Solar Water Heating System
4616	Water Softner
4617	Water Submeters
4618	Water/Waste Pipe Repair-NonRes
4619	Water/Waste Pipe Repair-Res
4620	Fire Alarm-HighRise-Res (P)
4621	Graywater Systems (I)

Attachment 5

4623	Antenna (I)
4634	Deck-Pre-Approved Plans (P)
4635	Deck-Pre-Approved Plans (I)
4669	Garage/Strg-SDU/DUP/TH (P)
4673	Greenhouses (P)
4674	Greenhouses (I)
4679	Patio Cover-Pre-Approved (P)
4680	Patio Cover-Pre-Approved (I)
4681	Patio Cover-SDU/DUP/TH (P)
4684	Patio Cover-SDU/DUP/TH (I)
4685	Siding/Stucco/Veneer (P)
4686	Siding/Stucco/Veneer (I)
4693	Retaining Wall (City Std) (P)
4694	Retaining Wall (City Std) (I)
4701	Roof Resheathing NonRes/MDU(I)
4702	Roof Resheathing SDU/DUP/TH(I)
4703	Roof Structure Replacement (P)
4704	Roof Structure Replacement (I)
4723	Storage Racks (Each Type) (P)
4724	Storage Racks (I)
4727	Pool/Spa MP Establish (P)
4730	Pool/Spa Per MP (I)
4733	Temporary Occupancy (I)
4735	Reinsp Fee-DSD (I)
4740	EV Systems-SDU/DUP/TH (I)
4741	Demolition/Removal Permit (P)
4742	Wtr/Swr-Non Res/MDU New Mtr(P)
4744	Wtr/Swr-Non Res/MDU No Chng(P)
4747	Wtr/Swr-SDU/DUP/TH New Mtr (P)
4748	Wtr/Swr+Non Res/MDU >3 Flrs(P)
4750	Wtr/Swr-New Backflow Prvnr(P)
4751	Antenna (P)
4752	Alternate Materials App
4753	Alt Method/Materials Request
4754	Fire Alarm-HighRise-NonRes (P)
4755	Fire Alarm-HighRise-Res (I)
4756	Fire Alarm-HighRise-NonRes (I)
4757	Fire Alarm-New Install (P)
4758	Fire Alarm-New Install (I)
4759	Fire Alarm-Sprnklr Monitor (P)
4760	Fire Alarm-Sprnklr Monitor (I)
4761	Fire Alarm-Alt to Existing (P)
4762	Fire Alarm-Alt to Existing (I)

Attachment 5

4763	Fire Alarm+Smoke Control (P)
4764	Fire Alarm+Smoke Control (I)
4765	Suppression-Special System (P)
4767	Suppression-Kitchen Hood (P)
4768	Suppression-Kitchen Hood (I)
4769	Sprinklers-HighRise-Res (P)
4770	Sprinklers-HighRise-NonRes (P)
4771	Sprinklers-HighRise-Res (I)
4772	Sprinklers-HighRise-NonRes (I)
4773	Sprinkler-Non Res/MDU (P)
4774	Sprinkler-Non Res/MDU (I)
4775	Sprinkler-SDU/DUP/TH-New (P)
4776	Sprinkler-SDU/DUP/TH-New (I)
4777	Sprinkler-SDU/DUP/TH-Ad/Rmd(P)
4778	Sprinkler-SDU/DUP/TH-Ad/Rmd(I)
4779	Sprinkler-Tenant Imprvmnt (P)
4780	Sprinkler-Tenant Imprvmnt (I)
4781	Sprinkler-Underground (P)
4782	Sprinkler-Underground (I)
4783	Fire Alarm Affidavit (P)
4784	Fire Alarm Affidavit (I)
4785	Sprinkler Affidavit (P)
4786	Sprinkler Affidavit (I)
4787	Sprinkler-Backflow w/o Calc(P)
4788	Sprinkler-Backflow w/o Calc(I)
4789	Sprinkler-Backflow w/ Calc(P)
4790	Sprinkler-Backflow w/ Calc(I)
4791	Standpipe Only (P)
4792	Standpipe Only (I)
4797	Fire Pump Only (P)
4798	Fire Pump Only (I)
4801	Sign-Awning/Wall, Non-Elec (P)
4802	Sign-Wall, Electric (P)
4803	Sign-Wall, Electric (I)
4804	Sign-Banner (P)
4805	Sign-Freeway (P)
4806	Sign-Freeway (I)
4807	Sign-Roof/Proj, Non-Elec (P)
4808	Sign-Roof/Proj, Electric (P)
4809	Sign-Roof/Proj, Electric (I)
4810	Sign-Ground, Non-Elec (P)
4811	Sign-Ground, Electric (P)
4812	Sign-Ground, Electric (I)

## Attachment 5

4813	Sign-Wall, High-Rise (P)
4814	Sign-Wall, High-Rise (I)
4815	Hrly-PW Deputy City Eng
4816	Hrly-PW Insp
4817	Hrly-PW Insp Supv
4818	Hrly-PW Landscape
4819	Hrly-PW Surveys
4820	Hrly-PW TestLab
4821	Insp-After Hours/PW
4822	Zone History Request
4823	Alcoholic Beverage Outlets (P)
4827	RepetitiveStrct-Misc (P)
4828	Mobile Food Truck (P)
4829	Long Term Monitor(\$100K-\$500K)
4830	Long Term Monitor(Over \$500K)
4831	CDP and/or SDP-Emergency
4833	CDP-SDU (Process 2)
4834	EOT-Development Permit
4835	Easement Vacation (Process 2)
4836	NUP-Sidewalk Café
4837	CDP/Map Waiver-Condo Creation
4838	Map Waiver-Condo Creation
4839	CDP/Map Waiver-Condo Conversn
4840	Map Waiver-Condo Conversn
4841	Wireless Com Fac-Process 2
4843	Wireless Com Fac-Process 3
4844	Wireless Com Fac-Process 4 PDP
4845	Wireless Com Fac-Process 4 SDP
4846	Wireless Com Facility+CityProp
4847	Env-Initial Study/Exemption
4848	Env-Initial Study Ext./Exempt
4851	Certificate of Compliance
4852	Certificate of Correction
4853	Deferred Improvement Agreement
4854	Esmt Ded-Single Type
4855	Esmt Ded-Each Add'l Type
4856	Final Map
4857	Final Map w/ Imprvmts
4858	Parcel Map-LLA w/ structures
4859	Parcel Map-LLA w/o structures
4860	LLA Plat w/ structures
4861	LLA Plat w/o structures
4863	Lot Tie Agreement

## Attachment 5

4864	Parcel Map w/o Imprvmts
4865	Parcel Map w/ Imprvmts
4866	Public Right-of-Way Dedication
4867	Reversion to Acreage
4868	Monumentation Fee (I)
4869	Subdivision Improvement Agmt
4870	ROW Const. Plan , Sm (P)
4871	Grading Const. Plan, Lg (P)
4872	Grading, D-Sheet (P)
4874	Grading and ROW, D-Sheet (P)
4875	ROW Const. Plan, Lg (P)
4876	ROW, D-Sheet (P)
4877	Deviation from Standard
4878	Geotechnical Study
4879	Storm Water Quality, Standard
4880	Storm Water Quality, Priority
4881	Drainage Study - Single Family
4882	Drainage Study - MDU/Non-Res
4883	Drainage Study - Subdivision
4884	Wtr Pollution Control Plan,Mnr
4885	Wtr Pollution Control Plan
4886	Storm Water Pollution Preventi
4887	Title Report
4888	Traffic Study
4889	Lighting Study
4890	Sewer Study
4891	Water Study
4892	Traffic Control, First Blk (P)
4894	Traffic Control, D-Sheet
4895	Street/Driveway Name
4896	Partial Bond Release
4897	ROW, D-Sheet w/Bridge (P)
4898	Traffic Signals - Simple
4899	Traffic Signals - Standard
4900	Traffic Signals - Complex
4901	Esmt Ded-Each Add'l Ownership
4902	Esmt-Covenant of
4903	Sidewalk Cafe-ROW Permit (P)
4904	Street Name Change (Process 1)
4905	Deferred Submittal Processing
4906	Change of Record
4907	Wireless Com Fac-SCR
4908	Wireless Com Fac-Limited Use

Attachment 5

4909	Expedite Program-Residential
4910	Expedite Program-NonRes
4912	Insp-After Hours-PW
4913	Sidewalk Café-ROW Permit (I)
4914	Recordation Fee-Mapping/Subdiv
4922	Hood Type II
4923	RepetitiveStrct-SDU/DUP (P)
4924	RepetitiveStrct-TH (P)
4925	RepetitiveStrct-Non Res/MDU(P)
4932	Pool/Spa SDU/DUP/TH Per MP (I)
4946	Sprinkler Affidavt-0Add/Alt(I)
4947	Sprinkler Affidavt-0Add/Alt(P)
4948	Reinsp Fee-DSD Stormwater (I)
4949	Affordable-Navajo-Mod
4950	Affordable-North Park-Mod
4951	Affordable-Ocean Beach-Mod
4952	Affordable-Old San Diego-Mod
4953	Affordable-Otay Mesa-Mod
4954	Affordable-Otay Mesa Nst-Mod
4955	Affordable-Pacific Beach-Mod
4956	Affordable-Penninsula-Mod
4957	Affordable-Sabre Springs-Mod
4958	Affordable-San Ysidro-Mod
4959	Affordable-Skyline/Pards-Mod
4960	Affordable-Southeast-Mod
4961	Affordable-University Cty-Mod
4962	Affordable-Uptown-Mod
4963	Affordable-Rho Bernardo-Mod
4964	Affordable-Via DeLa Valle-Mod
4965	Affordable-Torrey Pines-Mod
4966	Affordable-Torrey Hills-Mod
4967	Affordable-Tierrasanta-Mod
4968	Affordable-Miramar Rch N-Mod
4969	Affordable-Scripps Mirmr-Mod
4970	Affordable-Rho Penasquit-Mod
4971	Affordable-Serra Mesa-Mod
4972	Affordable-Fairbanks Rch-Mod
4973	Affordable-East Elliott-Mod
4974	Affordable-San Pasqual-Mod
4980	Affordable-Mission Valley-Mod
4981	Affordable-Kearny Mesa-Mod
4982	Affordable-Barrio Logan-Mod
4983	Affordable-Carmel Mt Rch-Mod

## Attachment 5

4984	Affordable-Carmel Valley-Mod
4985	Affordable-Centre City-Mod
4986	Affordable-Clmnt Mesa-Mod
4987	Affordable-College Area-Mod
4988	Affordable-Golden Hill-Mod
4989	Affordable-La Jolla-Mod
4990	Affordable-Linda Vista-Mod
4991	Affordable-Mid City-Mod
4992	Affordable-Midway PachWwy-Mod
4993	Affordable-Mira Mesa-Mod
4994	Affordable-Mission Beach-Mod
4997	Prelim Review - Multi
4999	Substantial Conformance Review
5000	Map Waiver, Only
5002	Neighborhood Use Pmt (not SWC)
5003	SMARA Compliance
5004	Tentative Map, Only
5005	Vesting Tentative Map, Only
5006	Variance
5017	Recordation Fee-County SB2
5018	Stormwater Insp HP/ASBS (I)
5024	SharedMobilityDev-EachDevice
5025	SharedMobilityDev-Equity
5026	SharedMobilityDev-AddlDevc/Day
5027	Grading Private (P)
5028	Grading Private (I)
5034	Mobilehome Installation
5035	Mobilehome Cabana/Ramada (I)
5040	Mobility Choices DIF
5041	Neighborhood Enhancement
5042	Citywide Parks DIF
5044	Otdr Dining Exclusive Use Fee
	Security Bond Deposit
5049	
5054	IH-BarrioLogan-Prior to 7/1/20
5055	IH-BarrioLogan-7/1/20-6/30/21
5056	IH-BarrioLogan7/1/21-6/30/22
5057	IH-BarrioLogan-7/1/22-6/30/23
5058	IH-CarMtnRanch-Prior to 7/1/20
5059	IH-CarMtnRanch-7/1/20-6/30/21
5060	IH-CarMtnRanch-7/1/21-6/30/22

Attachment 5

5061 IH-CarMtnRanch-7/1/22-6/30/23  
5062 IH-CarmelVally-Prior to 7/1/20  
5063 IH-CarmelValley-7/1/20-6/30/21  
5064 IH-CarmelValley-7/1/21-6/30/22  
5065 IH-CarmelValley-7/1/22-6/30/23  
5066 IH-CentreCity-Prior to 7/1/20  
5067 IH-CentreCity-7/1/20-6/30/21  
5068 IH-CentreCity-7/1/21-6/30/22  
5069 IH-CentreCity-7/1/22-6/30/23  
5070 IH-ClrmntMesa-Prior to 7/1/20  
5071 IH-ClrmntMesa-7/1/20-6/30/21  
5072 IH-ClrmntMesa-7/1/21-6/30/22  
5073 IH-ClrmntMesa-7/1/22-6/30/23  
5074 IH-CollegeArea-Prior to 7/1/20  
5075 IH-CollegeArea-7/1/20-6/30/21  
5076 IH-CollegeArea-7/1/21-6/30/22  
5077 IH-CollegeArea-7/1/22-6/30/23  
5078 IH-GoldenHill-Prior to 7/1/20  
5079 IH-GoldenHill-7/1/20-6/30/21  
5080 IH-GoldenHill-7/1/21-6/30/22  
5081 IH-GoldenHill-7/1/22-6/30/23  
5082 IH-LaJolla-Prior to 7/1/20  
5083 IH-LaJolla-7/1/20-6/30/21  
5084 IH-LaJolla-7/1/21-6/30/22  
5085 IH-LaJolla-7/1/22-6/30/23  
5086 IH-LindaVista-Prior to 7/1/20  
5087 IH-LindaVista-7/1/20-6/30/21  
5088 IH-LindaVista-7/1/21-6/30/22  
5089 IH-LindaVista-7/1/22-6/30/23  
5090 IH-MidCity-Prior to 7/1/20  
5091 IH-MidCity-7/1/20-6/30/21  
5092 IH-MidCity-7/1/21-6/30/22  
5093 IH-MidCity-7/1/22-6/30/23  
5094 IH-MidwyPacHwy-Prior to 7/1/20  
5095 IH-MidwayPacHwy-7/1/20-6/30/21  
5096 IH-MidwayPacHwy-7/1/21-6/30/22  
5097 IH-MidwayPacHwy-7/1/22-6/30/23  
5098 IH-MiraMesa-Prior to 7/1/20  
5099 IH-MiraMesa-7/1/20-6/30/21  
5100 IH-MiraMesa-7/1/21-6/30/22  
5101 IH-MiraMesa-7/1/22-6/30/23  
IH-MissionBeach-Prior-7/1/20  
5102

Attachment 5

5103 IH-MissionBeach-7/1/20-6/30/21  
5104 IH-MissionBeach-7/1/21-6/30/22  
5105 IH-MissionBeach-7/1/22-6/30/23  
5106 IH-MissionVall-Prior to 7/1/20  
5107 IH-MissionVall-7/1/20-6/30/21  
5108 IH-MissionVall-7/1/21-6/30/22  
5109 IH-MissionVall-7/1/22-6/30/23  
5110 IH-Navajo-Prior to 7/1/20  
5111 IH-Navajo-7/1/20-6/30/21  
5112 IH-Navajo-7/1/21-6/30/22  
5113 IH-Navajo-7/1/22-6/30/23  
5114 IH-NorthPark-Prior to 7/1/20  
5115 IH-NorthPark-7/1/20-6/30/21  
5116 IH-NorthPark-7/1/21-6/30/22  
5117 IH-NorthPark-7/1/22-6/30/23  
5118 IH-OceanBeach-Prior to 7/1/20  
5119 IH-OceanBeach-7/1/20-6/30/21  
5120 IH-OceanBeach-7/1/21-6/30/22  
5121 IH-OceanBeach-7/1/22-6/30/23  
5122 IH-OldTown-Prior to 7/1/20  
5123 IH-OldTown-7/1/20-6/30/21  
5124 IH-OldTown-7/1/21-6/30/22  
5125 IH-OldTown-7/1/22-6/30/23  
5126 IH-OtayMesa-Prior to 7/1/20  
5127 IH-OtayMesa-7/1/20-6/30/21  
5128 IH-OtayMesa-7/1/21-6/30/22  
5129 IH-OtayMesa-7/1/22-6/30/23  
5130 IH-OMNestor-Prior to 7/1/20  
5131 IH-OMNestor-7/1/20-6/30/21  
5132 IH-OMNestor-7/1/21-6/30/22  
5133 IH-OMNestor-7/1/22-6/30/23  
5134 IH-PacificBeach-Prior-7/1/20  
5135 IH-PacificBeach-7/1/20-6/30/21  
5136 IH-PacificBeach-7/1/21-6/30/22  
5137 IH-PacificBeach-7/1/22-6/30/23  
5138 IH-Peninsula-Prior to 7/1/20  
5139 IH-Peninsula-7/1/20-6/30/21  
5140 IH-Peninsula-7/1/21-6/30/22  
5141 IH-Peninsula-7/1/22-6/30/23  
5142 IH-SabreSprings-Prior-7/1/20  
5143 IH-SabreSprings-7/1/20-6/30/21

Attachment 5

5144 IH-SabreSprings-7/1/21-6/30/22  
5145 IH-SabreSprings-7/1/22-6/30/23  
5146 IH-SanYsidro-Prior to 7/1/20  
5147 IH-SanYsidro-7/1/20-6/30/21  
5148 IH-SanYsidro-7/1/21-6/30/22  
5149 IH-SanYsidro-7/1/22-6/30/23  
5150 IH-SkylnParHil-Prior to 7/1/20  
5151 IH-SkylnParHill-7/1/20-6/30/21  
5152 IH-SkylnParHill-7/1/21-6/30/22  
5153 IH-SkylnParHill-7/1/22-6/30/23  
5154 IH-SoutheastSD-Prior to 7/1/20  
5155 IH-SoutheastSD-7/1/20-6/30/21  
5156 IH-SoutheastSD-7/1/21-6/30/22  
5157 IH-SoutheastSD-7/1/22-6/30/23  
5158 IH-University-Prior to 7/1/20  
5159 IH-University-7/1/20-6/30/21  
5160 IH-University-7/1/21-6/30/22  
5161 IH-University-7/1/22-6/30/23  
5162 IH-Uptown-Prior to 7/1/20  
5163 IH-Uptown-7/1/20-6/30/21  
5164 IH-Uptown-7/1/21-6/30/22  
5165 IH-Uptown-7/1/22-6/30/23  
5166 IH-RanchoBernar-Prior-7/1/20  
5167 IH-RanchoBernar-7/1/20-6/30/21  
5168 IH-RanchoBernar-7/1/21-6/30/22  
5169 IH-RanchoBernar-7/1/22-6/30/23  
5170 IH-ViaDelaVall-Prior to 7/1/20  
5171 IH-ViaDelaValle-7/1/20-6/30/21  
5172 IH-ViaDelaValle-7/1/21-6/30/22  
5173 IH-ViaDelaValle-7/1/22-6/30/23  
5174 IH-TorreyPines-Prior to 7/1/20  
5175 IH-TorreyPines-7/1/20-6/30/21  
5176 IH-TorreyPines-7/1/21-6/30/22  
5177 IH-TorreyPines-7/1/22-6/30/23  
5178 IH-TorreyHills-Prior to 7/1/20  
5179 IH-TorreyHills-7/1/20-6/30/21  
5180 IH-TorreyHills-7/1/21-6/30/22  
5181 IH-TorreyHills-7/1/22-6/30/23  
5182 IH-Tierrasanta-Prior to 7/1/20  
5183 IH-Tierrasanta-7/1/20-6/30/21  
5184 IH-Tierrasanta-7/1/21-6/30/22  
5185 IH-Tierrasanta-7/1/22-6/30/23

Attachment 5

5186 IH-ScrippsMir-Prior to 7/1/20  
5187 IH-ScrippsMir-7/1/20-6/30/21  
5188 IH-ScrippsMir-7/1/21-6/30/22  
5189 IH-ScrippsMir-7/1/22-6/30/23  
IH-RanchoPenasq-Prior-7/1/20  
5190  
5191 IH-RanchoPenasq-7/1/20-6/30/21  
5192 IH-RanchoPenasq-7/1/21-6/30/22  
5193 IH-RanchoPenasq-7/1/22-6/30/23  
5194 IH-SerraMesa-Prior to 7/1/20  
5195 IH-SerraMesa-7/1/20-6/30/21  
5196 IH-SerraMesa-7/1/21-6/30/22  
5197 IH-SerraMesa-7/1/22-6/30/23  
5198 IH-MRanchNorth-Prior to 7/1/20  
5199 IH-MRanchNorth-7/1/20-6/30/21  
5200 IH-MRanchNorth-7/1/21-6/30/22  
5201 IH-MRanchNorth-7/1/22-6/30/23  
IH-FairbanksRch-Prior-7/1/20  
5202  
5203 IH-FairbanksRch-7/1/20-6/30/21  
5204 IH-FairbanksRch-7/1/21-6/30/22  
5205 IH-FairbanksRch-7/1/22-6/30/23  
5206 IH-EastElliot-Prior to 7/1/20  
5207 IH-EastElliot-7/1/20-6/30/21  
5208 IH-EastElliot-7/1/21-6/30/22  
5209 IH-EastElliot-7/1/22-6/30/23  
5210 IH-SanPasqual-Prior to 7/1/20  
5211 IH-SanPasqual-7/1/20-6/30/21  
5212 IH-SanPasqual-7/1/21-6/30/22  
5213 IH-SanPasqual-7/1/22-6/30/23  
5214 IH-KearnyMesa-Prior to 7/1/20  
5215 IH-KearnyMesa-7/1/20-6/30/21  
5216 IH-KearnyMesa-7/1/21-6/30/22  
5217 IH-KearnyMesa-7/1/22-6/30/23  
5218 Citywide Fire DIF - Non FDC  
5219 Citywide Fire DIF - FDC  
5220 Citywide Library DIF  
5221 Citywide Mobility DIF  
5222 IH-BarrioLogan-7/1/23-6/30/24  
5223 IH-CarMtnRanch-7/1/23-6/30/24  
5224 IH-CarmelValley-7/1/23-6/30/24  
5225 IH-CentreCity-7/1/23-6/30/24  
5226 IH-ClrmntMesa-7/1/23-6/30/24

Attachment 5

5227 IH-CollegeArea-7/1/23-6/30/24  
5228 IH-GoldenHill-7/1/23-6/30/24  
5229 IH-LaJolla-7/1/23-6/30/24  
5230 IH-LindaVista-7/1/23-6/30/24  
5231 IH-MidCity-7/1/23-6/30/24  
5232 IH-MidwayPacHwy-7/1/23-6/30/24  
5233 IH-MiraMesa-7/1/23-6/30/24  
5234 IH-MissionBeach-7/1/23-6/30/24  
5235 IH-MissionVall-7/1/23-6/30/24  
5236 IH-Navajo-7/1/23-6/30/24  
5237 IH-NorthPark-7/1/23-6/30/24  
5238 IH-OceanBeach-7/1/23-6/30/24  
5239 IH-OldTown-7/1/23-6/30/24  
5240 IH-OtayMesa-7/1/23-6/30/24  
5241 IH-OMNestor-7/1/23-6/30/24  
5242 IH-PacificBeach-7/1/23-6/30/24  
5243 IH-Peninsula-7/1/23-6/30/24  
5244 IH-SabreSprings-7/1/23-6/30/24  
5245 IH-SanYsidro-7/1/23-6/30/24  
5246 IH-SkyInParHill-7/1/23-6/30/24  
5247 IH-SoutheastSD-7/1/23-6/30/24  
5248 IH-University-7/1/23-6/30/24  
5249 IH-Uptown-7/1/23-6/30/24  
5250 IH-RanchoBernar-7/1/23-6/30/24  
5251 IH-ViaDelaValle-7/1/23-6/30/24  
5252 IH-TorreyPines-7/1/23-6/30/24  
5253 IH-TorreyHills-7/1/23-6/30/24  
5254 IH-Tierrasanta-7/1/23-6/30/24  
5255 IH-ScrippsMir-7/1/23-6/30/24  
5256 IH-RanchoPenasq-7/1/23-6/30/24  
5257 IH-SerraMesa-7/1/23-6/30/24  
5258 IH-MRanchNorth-7/1/23-6/30/24  
5259 IH-FairbanksRch-7/1/23-6/30/24  
5260 IH-EastElliot-7/1/23-6/30/24  
5261 IH-SanPasqual-7/1/23-6/30/24  
5262 IH-KearnyMesa-7/1/23-6/30/24  
5263 FAR Bonus Payment Program  
5264 DIF-Otay Mesa Local Mobility  
5265 Mills Act Program Agreement  
5266 Mills Act Program Monitoring  
5267 Mills Act Program Enforcement  
5268 Indiv Historical Resource Nom  
5272 DSD Right of Way, Minor (I)

Attachment 5

5273	Employee Housing Incentive Fee
5274	Urban Tree Canopy Fee
5275	IH-MissionVall-7/1/24-6/30/25
5276	IH-KearnyMesa-7/1/24-6/30/25
5277	IH-BarrioLogan-7/1/24-6/30/25
5278	IH-CarMtnRanch-7/1/24-6/30/25
5279	IH-CarmelValley-7/1/24-6/30/25
5280	IH-CentreCity-7/1/24-6/30/25
5281	IH-ClrmntMesa-7/1/24-6/30/25
5282	IH-CollegeArea-7/1/24-6/30/25
5283	IH-GoldenHill-7/1/24-6/30/25
5284	IH-LaJolla-7/1/24-6/30/25
5285	IH-LindaVista-7/1/24-6/30/25
5286	IH-MidCity-7/1/24-6/30/25
5287	IH-MidwayPacHwy-7/1/24-6/30/25
5288	IH-MiraMesa-7/1/24-6/30/25
5289	IH-MissionBeach-7/1/24-6/30/25
5290	IH-Navajo-7/1/24-6/30/25
5291	IH-NorthPark-7/1/24-6/30/25
5292	IH-OceanBeach-7/1/24-6/30/25
5293	IH-OldTown-7/1/24-6/30/25
5294	IH-OtayMesa-7/1/24-6/30/25
5295	IH-OMNestor-7/1/24-6/30/25
5296	IH-PacificBeach-7/1/24-6/30/25
5297	IH-Peninsula-7/1/24-6/30/25
5298	IH-RanchoPenasq-7/1/24-6/30/25
5299	IH-SabreSprings-7/1/24-6/30/25
5300	IH-SanYsidro-7/1/24-6/30/25
5301	IH-SkyInParHill-7/1/24-6/30/25
5302	IH-SoutheastSD-7/1/24-6/30/25
5303	IH-University-7/1/24-6/30/25
5304	IH-Uptown-7/1/24-6/30/25
5305	IH-RanchoBernar-7/1/24-6/30/25
5306	IH-ViaDelaValle-7/1/24-6/30/25
5307	IH-TorreyPines-7/1/24-6/30/25
5308	IH-TorreyHills-7/1/24-6/30/25
5309	IH-Tierrasanta-7/1/24-6/30/25
5310	IH-MRanchNorth-7/1/24-6/30/25
5311	IH-ScrippsMir-7/1/24-6/30/25
5312	IH-SerraMesa-7/1/24-6/30/25
5313	IH-FairbanksRch-7/1/24-6/30/25

Attachment 5

5314 IH-EastElliot-7/1/24-6/30/25  
5315 IH-SanPasqual-7/1/24-6/30/25  
5316 Special Inspector App/Cert  
5317 Standalone Parking Garage (P)  
5318 Partial-Res. BO to Occupy (P)  
5319 New MDU (P)  
5320 Res-MDU & Non-Res Addition (P)  
5321 Home Attached Townhomes (P)  
5322 Partial-High Rise-Buildout (P)  
5323 Partial-HR-Foundation (P)  
5324 Partial-High Rise-Frame (P)  
5325 Partial-High Rise-Shell (P)  
5326 Manufactured/FBH SDU (P)  
5327 Standalone Parking Garage (I)  
5328 Partial-Res. BO to Occupy (I)  
5329 New MDU (I)  
5330 Res-MDU & Non-Res Addition (I)  
5331 Home Attached Townhomes (I)  
5332 Partial-HR-Foundation (I)  
5333 Traffic Control, Dumpster Fee  
5334 Zoning Use Verification  
5335 Carport/Shade < 500 SF (P)  
5336 Carport/Shade 501-3000 SF (P)  
5337 Carport/Shade > 3000 SF (P)  
5338 Carport/Shade < 3000 SF (I)  
5340 Carport/Shade > 3000 SF (I)  
5341 Partial - Foundation (P)  
5342 Partial - Frame (P)  
5343 Partial-Shell & Non-Res BO (P)  
5344 Partial - Foundation (I)  
5345 Partial - Frame (I)  
5346 Partial-Shell & Non-Res BO (I)  
5347 Partial-High Rise-Shell (I)  
5348 Manufactured/FBH SDU (I)  
5349 Air Handler, Mini-Split, Humid  
5350 Foundation Repair (P)  
5351 Awnings/Canopies (P)  
5352 Awnings/Canopies (I)  
5353 State Appr. Comm. Modular (P)  
5354 State Appr. Comm. Modular (I)  
5355 Deck-SDU/DUP/TH/MDU (P)  
5356 Deck-SDU/DUP/TH/MDU (I)  
5357 Demo.-Partition Only (Res)(P)

Attachment 5

5358 Door/Window (New/Replace) (P)  
5359 Door/Window (New/Replace) (I)  
5360 Fence (Mas/Non-Mas) > 7 ft (P)  
5361 Fence (Mas/Non-Mas) > 7 ft (I)  
5363 Fence (Mas/Non-Mas) Std (I)  
5364 Fireplace (P)  
5365 Fireplace (I)  
5366 Pole/Pole w Electrical (P)  
5367 Pole/Pole w Electrical (I)  
5368 Garage/Strg-Non Res/MDU (I)  
5369 Garage/Strg-Non Res/MDU (P)  
5370 Repair In-Kind (I)  
5371 Retaining Wall w/Calc < 6'(P)  
5372 Retaining Wall w/Calc < 6'(I)  
5373 Retaining Wall w/Calc > 6' (P)  
5374 Retaining Wall w/Calc > 6' (I)  
5375 Equipment Pad (P)  
5376 Equipment Pad (I)  
5377 Pool/Spa Private Custom (P)  
5378 Pool/Spa Private Custom (I)  
5379 Foundation Repair (I)  
5380 Panel Replace HR FACP (P)  
5381 Panel Replace HR FACP (I)  
5382 Panel Replace-Non-HR FACP (P)  
5383 Panel Replace-Non-HR FACP (I)  
5384 Traffic Control Extension (P)  
5385 Partial-High Rise-Frame (I)  
5386 New Commercial (P)  
5387 Tenant Improvement/Remodel (P)  
5388 TI/Remodel Rapid Review (P)  
5389 Factory Built Housing MDU (P)  
5390 Master Plan Est-MDU (P)  
5391 New Commercial (I)  
5392 Tenant Improvement/Remodel (I)  
5393 TI/Remodel Rapid Review (I)  
5394 Factory Built Housing MDU (I)  
5395 Repipe (I)  
5396 Skylight (P)  
5397 Skylight (I)  
5398 Piles, Pile Cap and Grade Beam  
5399 Neighborhood Devel Pmt-Simple  
5400 Neighborhood Devel Pmt-Complex  
5401 Wtr/Swr-SDU/DUP/TH No Chg (P)

## Attachment 5

5402	Wtr/Swr-SDU/DUP/TH MP (P)
5403	Wtr/Swr-MDU Master Plan (P)
5404	Records Research Assistance
5405	Hazmat Review (P) Add-On
5406	Panel Replace/Upgrade <200 amp
5407	Sprinkler Head Replacement
5408	Traffic Control, Process Fee
5411	Traff Cntrl Temp Stor Cont TSC
5412	Hrly - DSD
5413	Hrly - DSD OT
5414	Hrly - DSD (Pln Chk)
5415	Hrly - DSD OT (Pln Chk)
5416	Hrly - DSD (Inspec)
5417	Hrly - DSD OT (Inspec)
5418	Uncontrolled Embank Maint Agmt
5419	Extension of Applications
5420	Extension of Permits
5421	DSD ROW Minor + Wet Util (I)
5422	Excavation Moratorium Waiver
5423	Grading - Minor
5425	PnR-Hrly Park Designer
5426	PnR-Hrly Asoc Engineer Civil
5427	PnR-Hrly Sr Engineer Civil
5428	PnR-Hrly Prj Officer I
5429	PnR-Hrly Prj Officer II
5430	PnR-Hrly Asoc Planner
5431	PnR-Hrly Senior Planner
5432	Hist Designation Appeal Fee
5433	PLN Hrly Proj Rvw - DIF
5434	PLN Hrly Proj Rvw - Comm Plan
5435	PLN Hrly Proj Rvw - Heritage
5436	PLN Hrly Proj Rvw - BioSD
5437	Hrly-DSD Rvw Traffic (P)
5438	Hrly-DSD Rvw Water/Sewer (P)
5439	Hrly-Fire Rvw (P)
5440	Hrly-Records
5441	Hrly-DSD Addressing (P)
5442	Hrly-DSD Biologist (P)
5443	Hrly-DSD Mitigation Mon.
5444	Hrly-DSD Mitigation Mon. (P)
5445	Hrly-DSD Project Mgmt
5446	Hrly-DSD Rvw Combined (P)
5447	Hrly-DSD Rvw Electrical (P)

Attachment 5

5448 Hrly-DSD Rvw Engineering (P)  
5449 Hrly-DSD Rvw Environment (P)  
5450 Hrly-DSD Rvw Fire Plan (P)  
5451 Hrly-DSD Rvw Geology (P)  
5452 Hrly-DSD Rvw Landscape (P)  
5453 Hrly-DSD Rvw LDR Zoning (P)  
5454 Hrly-DSD Rvw Mapping (P)  
5455 Hrly-DSD Rvw Mechanical (P)  
5456 Hrly-DSD Rvw Planning (P)  
5457 Hrly-DSD Rvw Structural (P)  
5458 Affordable Housing Doc Prep  
5462 Traff Cntr Con Pln Sm 11x17 v2  
5463 Traff Cntr Con Pln Lg 24x18 v2  
5464 Hrly-Fire Dept Rvw (P)  
5465 Fence (Mas/Non-Mas) Std (P) v2  
5466 Supp-Special Syst (P) v2  
5467 Supp-Special Syst (I) v2  
5468 Subpoena Appearance Enter  
5469 Subpoena Appearance BLUE  
5470 Subpoena Appearance LEA  
5471 Subpoena Intake  
5472 MH Accessory Structure SPA  
5473 MH Foundation Installation  
5474 MH Porch  
5475 MH Reinspection  
5476 MH Carport  
5477 MH Cabana/Ramada - Permit  
5478 MH Installation (Single Wide)  
5479 MH Cabana/Ramada - Plan Rev  
5480 Earthquake Resist Bracing Syst  
5481 Penalty Fee Constr w/o Permit  
5482 Accs Struct w/out SPA Permit  
5483 Technical Service  
5484 Accs Struct w/out SPA Plan Rev  
5485 MH Installation (Double Wide)  
5486 MH Installation (Triple Wide)  
5487 Mobilehome Lot Utility  
DSD Notary Services  
5488  
5489 Hrly-ECP Insp  
5490 Hrly-ECP Surveys  
5491 Hrly-ECP TestLab  
5492 Insp-After Hours/ECP

Attachment 5

5493 Testlab -After Hours/ECP  
5494 IH-MissionVall-7/1/25-6/30/26  
5495 IH-KearnyMesa-7/1/25-6/30/26  
5496 IH-BarrioLogan-7/1/25-6/30/26  
5497 IH-CarMtnRanch-7/1/25-6/30/26  
5498 IH-CarmelValley-7/1/25-6/30/26  
5499 IH-CentreCity-7/1/25-6/30/26  
5500 IH-ClrmntMesa-7/1/25-6/30/26  
5501 IH-CollegeArea-7/1/25-6/30/26  
5502 IH-GoldenHill-7/1/25-6/30/26  
5503 IH-LaJolla-7/1/25-6/30/26  
5504 IH-LindaVista-7/1/25-6/30/26  
5505 IH-MidCity-7/1/25-6/30/26  
5506 IH-MidwayPacHwy-7/1/25-6/30/26  
5507 IH-MiraMesa-7/1/25-6/30/26  
5508 IH-MissionBeach-7/1/25-6/30/26  
5509 IH-Navajo-7/1/25-6/30/26  
5510 IH-NorthPark-7/1/25-6/30/26  
5511 IH-OceanBeach-7/1/25-6/30/26  
5512 IH-OldTown-7/1/25-6/30/26  
5513 IH-OtayMesa-7/1/25-6/30/26  
5514 IH-OMNestor-7/1/25-6/30/26  
5515 IH-PacificBeach-7/1/25-6/30/26  
5516 IH-Peninsula-7/1/25-6/30/26  
5517 IH-RanchoPenasq-7/1/25-6/30/26  
5518 IH-SabreSprings-7/1/25-6/30/26  
5519 IH-SanYsidro-7/1/25-6/30/26  
5520 IH-SkyInParHill-7/1/25-6/30/26  
5521 IH-SoutheastSD-7/1/25-6/30/26  
5522 IH-University-7/1/25-6/30/26  
5523 IH-Uptown-7/1/25-6/30/26  
5524 IH-RanchoBernar-7/1/25-6/30/26  
5525 IH-ViaDelaValle-7/1/25-6/30/26  
5526 IH-TorreyPines-7/1/25-6/30/26  
5527 IH-TorreyHills-7/1/25-6/30/26  
5528 IH-Tierrasanta-7/1/25-6/30/26  
5529 IH-MRanchNorth-7/1/25-6/30/26  
5530 IH-ScrippsMir-7/1/25-6/30/26  
5531 IH-SerraMesa-7/1/25-6/30/26  
5532 IH-FairbanksRch-7/1/25-6/30/26  
5533 IH-EastElliot-7/1/25-6/30/26  
5534 IH-SanPasqual-7/1/25-6/30/26

Attachment 5

5535	Copies-Microprints BLUE
5536	Copies-Microprints LEA
5537	Hrly-Subpoena Research LEA
5538	Subpoena Copies LEA
5539	Subpoena Copies-CD LEA
5540	Subpoena Copies-CD DSD

# Attachment 6 – Fee List

## Fee List

### Plan Check, Project Review, Permit and Administrative Fees subject to the General Plan Maintenance Fee Surcharge

#### Applicable Fee Codes (235)

Plan Checks - Buildings & Partial Permits / Structures (33)			
Ref: DSD Information Bulletin 501, Tables 501A & 501B			
Construction Noise Permit	4485	Manufactured/FBH SDU (P)	5326
Master Plan Est-SDU/DUP (P)	4496	Partial – Foundation (P)	5341
High Rise (P)	4498	Partial – Frame (P)	5342
Warehouse/Self-Storage (P)	4517	Partial-Shell & Non-Res BO (P)	5343
Sidewalk Café-Building (P)	4518	New Commercial (P)	5386
RepetitiveStrct-TH (P)	4924	Tenant Improvement/Remodel (P)	5387
RepetitiveStrct-Non Res/MDU(P)	4925	TI/Remodel Rapid Review (P)	5388
Standalone Parking Garage (P)	5317	Factory Built Housing MDU (P)	5389
Partial-Res. BO to Occupy (P)	5318	Master Plan Est-MDU (P)	5390
New MDU (P)	5319	MH Accessory Structure SPA	5472
Res-MDU & Non-Res Addition (P)	5320	(Special Purpose Accessory)	
Home Attached Townhomes (P)	5321	MH Cabana/Ramada – Plan Rev	5479
Partial-High Rise-Buildout (P)	5322	Accs Struct w/out SPA Permit	5482
Partial-HR-Foundation (P)	5323	Accs Struct w/out SPA Plan Rev	5484
Partial-High Rise-Frame (P)	5324	Res-SDU/DUP (P)	4509
Partial-High Rise-Shell (P)	5325	Res-SDU/DUP Add/Remodel (P)	4510
Traffic Study (Ref IB 501 § V)	4888	RepetitiveStrct-SDU/DUP (P)	4923

## Attachment 6 – Fee List

Plan Checks – Structures Specialized/Miscellaneous (33)			
Ref: DSD Information Bulletin 501, Table 501C			
Deck-Pre-Approved Plans (P)	4634	Deck-SDU/DUP/TH/MDU (P)	5355
Garage/Strg-SDU/DUP/TH (P)	4669	Demo.-Partition Only (Res)(P)	5357
Greenhouses (P)	4673	Door/Window (New/Replace) (P)	5358
Patio Cover-Pre-Approved (P)	4679	Fence (Mas/Non-Mas) > 7 ft (P)	5360
Patio Cover-SDU/DUP/TH (P)	4681	Fireplace (P)	5364
Siding/Stucco/Veneer (P)	4685	Pole/Pole w Electrical (P)	5366
Retaining Wall (City Std) (P)	4693	Garage/Strg-Non Res/MDU (P)	5369
Roof Structure Replacement (P)	4703	Retaining Wall w/Calc < 6'(P)	5371
Storage Racks (Each Type) (P)	4723	Retaining Wall w/Calc > 6' (P)	5373
Pool/Spa MP Establish (P)	4727	Equipment Pad (P)	5375
Demolition/Removal Permit (P)	4741	Pool/Spa Private Custom (P)	5377
Carport/Shade < 500 SF (P)	5335	Skylight (P)	5396
Carport/Shade 501-3000 SF (P)	5336	Fence (Mas/Non-Mas) Std (P) v2	5465
Carport/Shade > 3000 SF (P)	5337	Antenna (P)	4751
Awnings/Canopies (P)	5351	Alternate Materials App	4752
State Appr. Comm. Modular (P)	5353	RepetitiveStrct-Misc (P)	4827
		Hazmat Review (P) Add-On	5405

## Attachment 6 – Fee List

Plan Checks – Sign Permits (9) <i>Ref: DSD IB 111</i>		Plan Checks – Water/Sewer Permits (8) <i>Ref: DSD IB 501, Table 501D</i>		Plan Checks – Construction Permits (14) <i>Ref: DSD IB 502, Table 502A</i>	
Sign-Awning/Wall, Non-Elec (P)	4801	Wtr/Swr-Non Res/MDU New Mtr(P)	4742	ROW Const. Plan , Sm (P)	4870
Sign-Wall, Electric (P)	4802	Wtr/Swr-Non Res/MDU No Chng(P)	4744	Grading Const. Plan, Lg (P)	4871
Sign-Banner (P)	4804	Wtr/Swr-SDU/DUP/TH New Mtr (P)	4747	Grading, D-Sheet (P)	4872
Sign-Freeway (P)	4805	Wtr/Swr+Non Res/MDU >3 Flrs(P)	4748	Grading and ROW, D-Sheet (P)	4874
Sign-Roof/Proj, Non-Elec (P)	4807	Wtr/Swr-New Backflow Prvntr(P)	4750	ROW Const. Plan, Lg (P)	4875
Sign-Roof/Proj, Electric (P)	4808	Wtr/Swr-SDU/DUP/TH No Chg (P)	5401	ROW, D-Sheet (P)	4876
Sign-Ground, Non-Elec (P)	4810	Wtr/Swr-SDU/DUP/TH MP (P)	5402	Traff Cntr Con Pln Sm 11x17 v2	5462
Sign-Ground, Electric (P)	4811	Wtr/Swr-MDU Master Plan (P)	5403	Traff Cntr Con Pln Lg 24x18 v2	5463
Sign-Wall, High-Rise (P)	4813			Traffic Control, D-Sheet	4894
				Traffic Signals – Simple	4898
				Traffic Signals – Standard	4899
				Traffic Signals – Complex	4900
				ROW, D-Sheet w/ Bridge (P)	4897
				Subdivision Improvement Agmt	4869

## Attachment 6 – Fee List

Plan Checks - Technical Report Reviews (12) <i>Ref DSD IB 502, Table 502 B</i>		Plan Checks – Other Grading/Public Right of Way Permits, Traffic Control Permits & Mapping Actions (9) <i>Ref DSD IB 502 and IB 177 (Traffic Control)</i>	
Geotechnical Study	4878	Grading Private (P)	5027
Storm Water Quality, Standard	4879	Sidewalk Café – ROW Permit (P)	4903
Storm Water Quality, Priority	4880	Deviation from Standard	4877
Drainage Study – Single Family	4881	Street/Driveway Name	4895
Drainage Study – MDU/Non-Res	4882	Street Name Change (Process 1)	4904
Drainage Study – Subdivision	4883	Traffic Control, First Blk (P)	4892
Wtr Pollution Control Plan,Mnr	4884	Traffic Control Extension (P)	5384
Wtr Pollution Control Plan	4885	Traffic Control, Process Fee	5408
Storm Water Pollution Preventi	4886	Traff Cntrl Temp Stor Cont TSC	5411
Lighting Study	4889		
Sewer Study	4890		
Water Study	4891		

Plan Checks – Mapping Actions (17) <i>(Ref: DSD IB 502, Table 502C)</i>			
Esmt Ded-Each Add'l Ownership	4901	LLA Plat w/ structures	4860
Esmt-Covenant of	4902	LLA Plat w/o structures	4861
Certificate of Correction	4852	Lot Tie Agreement	4863
Esmt Ded-Single Type	4854	Parcel Map w/o Imprvmnts	4864
Esmt Ded-Each Add'l Type	4855	Parcel Map w/ Imprvmnts	4865
Final Map	4856	Public Right-of-Way Dedication	4866
Final Map w/ Imprvmnts	4857	Reversion to Acreage	4867
Parcel Map-LLA w/ structures	4858	Certificate of Compliance	4851
Parcel Map-LLA w/o structures	4859		

Plan Checks – Fire Permits (26) <i>Ref. DSD IB 506</i>			
Hrly-Fire Dept Rvw (P)	5464	Sprinkler-SDU/DUP/TH-Ad/Rmd(P)	4777
Fire Alarm-HighRise-Res (P)	4620	Sprinkler-Tenant Imprvmnt (P)	4779
Fire Alarm-HighRise-NonRes (P)	4754	Sprinkler-Underground (P)	4781
Fire Alarm-New Install (P)	4757	Fire Alarm Affidavit (P)	4783
Fire Alarm-Sprnklr Monitor (P)	4759	Sprinkler Affidavit (P)	4785
Fire Alarm-Alt to Existing (P)	4761	Sprinkler-Backflow w/o Calc(P)	4787
Fire Alarm+Smoke Control (P)	4763	Sprinkler-Backflow w/ Calc(P)	4789
Suppression-Special System (P)	4765	Standpipe Only (P)	4791
Suppression-Kitchen Hood (P)	4767	Fire Pump Only (P)	4797
Sprinklers-HighRise-Res (P)	4769	Sprinkler Affidavt-0Add/Alt(P)	4947
Sprinklers-HighRise-NonRes (P)	4770	Panel Replace HR FACP (P)	5380
Sprinkler-Non Res/MDU (P)	4773	Panel Replace-Non-HR FACP (P)	5382
Sprinkler-SDU/DUP/TH-New (P)	4775	Supp-Special Syst (P) v2	5466

## Attachment 6 – Fee List

Development & Policy Approvals / Permits (18) (Ref DSD IB 503)							
Tentative Map Only	5004		Neighborhood Use Permit (Not SWC) (Not subject to special waiver/control)	5002		Coastal Development Permit/Map Waiver - Condo Conversion	4839
VTM Only	5005		Alcoholic Beverage Outlets	4823		Map Waiver - Condo Conversion	4840
Variance	5006		Coastal Development Permit and/or Site Development Permit Emergency	4831		Coastal Development Permit / Map Waiver - Condo Creation	4837
Map Waiver, Only	5000		Coastal Development Permit – Single Dwelling Unit - Process 2	4833		Map Waiver - Condo Creation	4838
			Temporary Use Permit	3641		Mobile Food Truck (P)	4828
Easement Vacation (Process 2)	4835		NUP – Sidewalk Café	4836		Neighborhood Devel Pmt – Simple	5399
						Neighborhood Devel Pmt-Complex	5400

Project Reviews - Heritage Preservation (4) Ref: DSD IB 503		Hourly Project Review - City Planning (3) Ref: DSD IB 503		Hourly Project Review – Park and Recreation (7) Ref: DSD IB 503	
Mills Act Agreement	5265	Hourly Project Review – Community Planning	5434	PnR-Hrly Park Designer	5245
Mills Act Monitoring	5266	Hourly Project Review – Heritage	5435	PnR-Hrly Asoc Engineer Civil	5246
Mills Act Enforcement	5267	PLN Hourly Project Review – Biodiverse SD	5436	PnR-Hrly Sr Engineer Civil	5247
Historical Resource Nomination	5268			PnR-Hrly Prj Officer I	5248
				PnR-Hrly Prj Officer II	5249
				PnR-Hrly Asoc Planner	5430
				PnR-Hrly Senior Planner	5431

## Attachment 6 – Fee List

Plan Checks – Hourly Fees (26)			
Hrly – DSD	5412	Hrly-DSD Rvw Geology (P)	5451
Hrly – DSD OT	5413	Hrly-DSD Rvw Landscape (P)	5452
Hrly – DSD (Pln Chk)	5414	Hrly-DSD Rvw LDR Zoning (P)	5453
Hrly – DSD OT (Pln Chk)	5415	Hrly-DSD Rvw Mapping (P)	5454
Hrly-DSD Rvw Traffic (P)	5437	Hrly-DSD Rvw Mechanical (P)	5455
Hrly-DSD Rvw Water/Sewer (P)	5438	Hrly-DSD Rvw Planning (P)	5456
Hrly-Fire Rvw (P)	5439	Hrly-DSD Rvw Structural (P)	5457
Hrly-DSD Addressing (P)	5441	Hrly-PW Deputy City Eng	4815
Hrly-DSD Biologist (P)	5442	Hrly-PW Landscape	4818
Hrly-DSD Rvw Combined (P)	5446	Hrly-DSD Rvw Environment (P)	5449
Hrly-DSD Rvw Electrical (P)	5447	Hrly-PW Surveys	4819
Hrly-DSD Rvw Engineering (P)	5448	Hrly-PW TestLab	4820
Hrly-DSD Rvw Environment (P)	5449		
Hrly-DSD Rvw Fire Plan (P)	5450		

Administrative Fees (16)			
Extension of Applications <i>(Ref IB 501§ V, IB 119)</i>	5419	Extension of Permits <i>(Ref IB 501 § V)</i>	5420
Close Out Fee <i>(Ref DSD IB 503 Table 503A, Table 503B &amp; IB500)</i>	4432	Extension of Time Dev Permit and/or Tentative Map <i>(Ref DSD IB 503)</i>	4834
Expedite Program Non-Residential <i>(Ref IB 503 &amp; IB 538)</i>	4910	Hourly Project Management Fee <i>(Ref IB 501 § IV A)</i>	5445
Expedite Program Residential <i>(Ref IB 503 &amp; IB 538)</i>	4909	Preliminary Review -Multi Discipline <i>(Ref IB 503)</i>	4997
Express Plan Check Administration Fee <i>(Ref IB 501 § IV B. and IB 502 § IV.D.)</i>	3628	Preliminary Review – Single Discipline <i>(Ref IB 503)</i>	3632
Application Extension – Project <i>(Ref IB 501§ V, IB 119)</i>	4473	Substantial Conformance Review <i>(Ref IB 503 &amp; IB 500)</i>	4999
Zoning Use Verification Ref: <a href="https://www.sandiego.gov/development-services/permits/zoning-use-verification">https://www.sandiego.gov/development-services/permits/zoning-use-verification</a>	5334	Deferred Submittal Processing <i>(Ref IB 188, § III)</i>	4905
Street/Driveway Name <i>(Ref IB 502, § IV. I.)</i>	4895	Street Name Change (Process 1) <i>(Ref IB 502, § IV. I.)</i>	4904

## Baseline Revenue Assumption

### Derivation of Fee Revenue subject to the proposed

### General Plan Maintenance Fee

City Planning reviewed the set of active fee codes as provided by the Development Services Department (DSD) and identified 235 Fee Codes for application to General Plan Maintenance Fee Surcharge. The criteria for selection were based on whether the service associated with the fee has a nexus to the General Plan.

A list of the Fee Codes subject to the GPMF surcharge are provided in Attachment 6 to the staff report.

Historical revenue receipts from the 235 Fee Codes. Revenue data for the 235 fee codes was provided to City Planning by DSD.

Fiscal Year	Revenue	Notes
2023	\$23,105,513	
2024	\$21,928,030	
2025	\$51,465,783	Major Fee Update implemented
2026 through 10	\$57,754,736	Additional Fee Updates implemented

We are aware that DSD has implemented various fee increases and structural changes to the fee program in recent years. For this reason, we are relying on FY 26 revenue as an indicator for future revenue receipts for the purposes of this fee study.

The methodology for the development of revenue assumption (**Baseline Revenue Assumption**) is detailed as follows:

FY 2026 Fee Revenue for through Accounting Period 10: \$57,754,736

Straight-line Annual Projection based on revenue through Accounting Period 10

$$(\$57,754,736 / 10) \times 12 = \$69,305,683$$

Adjustment to reflect annualized impact of the 7.25% Fee Increase to DSD Fees that took effect 5/4/26:

$$\$69,305,683 \times 1.0725 = \$74,330,345$$

## Attachment 7

Adjustment to reduce projection by 10% to account for general uncertainty in economic and development activity. This produces the **Baseline Revenue Assumption**.

$$\$74,330,345 * 90\% = \$66,897,311$$

Surcharge revenue is calculated from the **Baseline Revenue Assumption** as follows:

$$\$66,897,311 * 11.25\% = \$7,525,947$$

The Surcharge Revenue from the **Baseline Revenue Assumption** is equivalent to a Cost Recovery Rate of 67.6%, calculated as follows:

$$\$7,525,947 / \$11,138,440 = 67.6\%$$

While \$66.9 M is the assumed revenue for the 235 Fee Codes subject to the surcharge and is the basis for establishing the Cost Recovery Rate for the fee, this revenue figure assumes that all revenue for all fees for a given project occur at the same point in time. While most fees subject to the Surcharge will get paid at the same point in time, i.e. within 60 days of Project Application at the point in time the project application is “*Deemed Complete*”, a minority of fees subject to the GPMF Surcharge will not typically get paid until “*Permit Issuance*”. Permit Issuance timing varies on the complexity of the project but can be anywhere from 6 to 24 months or longer after the project application is Deemed Complete. For this reason, for the purpose of revenue planning for the first year of fee implementation staff is assuming that Year 1 Revenue Receipts will be 85% of this figure.

$$\$66,897,310 * 85\% = \$56,862,714$$

Surcharge Revenue for the First Year Becomes

$$\$56,862,714 * 11.25\% = \$6,397,055$$

Monthly Surcharge Revenue in Year 1 becomes

$$\$6,397,055 / 12 = \$533,087$$

## Attachment 7

### Fiscal Year 2027 (Year 1) will be a Hybrid Year:

Accounting for statutory requirements for the fee change to occur no sooner than 60 days after adoption and allowing for time to establish and implement the fee in DSD’s Fee System, City Planning staff are assuming the GPMF Surcharge will take effect November 1, 2026. This means that the current flat fee of \$737 will remain in effect through October 31, 2026. Based on these assumptions, revenue in Fiscal Year 2027 is projected as follows:

Fiscal Year 2027	Status	Revenue
July	Current Fee \$737	\$517K
August	Current Fee \$737	\$517K
September	Current Fee \$737	\$517K
October	Current Fee \$737	\$517K
November	New Surcharge implemented. Revenue temporarily drops as timing of Fee Payment shifts from “Project Application” to “Deemed Complete”	\$300K
December	Month 2 of New Surcharge. Revenue remains below projected level but starts in increase as more projects reach “Deemed Complete” milestone.	\$434K
January	Month 3 of New Surcharge. Revenue reaches “steady state” for Year 1, assumed to be 85% of Baseline Revenue Assumption.	\$533K
February		\$533K
March		\$533K
April		\$533K
May		\$533K
June		\$533K
<b>Total FY 2027</b>		<b>\$6.0 M</b>

By Fiscal Year 2028, it is assumed the revenue stream will get closer to steady state as more projects are paying fees coming due at Permit Issuance. Staff applied a factor of 90%, reflecting the assumption that revenue from the DSD fees subject to the Surcharge will approach 90% of the *Baseline Revenue Assumption* of \$66.9 M.

$((\$66.9 \text{ M} \times 90\%) / 12) \times 11.25\% = \$564\text{K/month}$  or \$6.8 Million for the year

*Note: This calculation does not take into account any inflationary adjustment to the Plan Check or other fees subject to the Surcharge. Absent a decline in development activity, increases in these fees will further increase revenue from the Surcharge.*

## Attachment 7

By Fiscal Year 2029, it is assumed the revenue stream gets even closer steady state as most of the oldest projects in the queue from Fiscal Year 2027 are now paying fees due at Permit Issuance. Staff accordingly applied a factor of 95%, as follows:

$((\$66.9 \text{ M} \times 95\%) / 12) \times 11.25\% = \$596\text{K}$  per month, or \$7.1 Million for the year

*Note: This calculation does not take into account any inflationary adjustment to the Plan Check or other fees subject to the Surcharge. Absent a decline in revenue activity, Increases in these fees will further increase revenue from the Surcharge.*

By Fiscal Year 2030, it is assumed that steady state is achieved as the oldest projects in the queue from Fiscal Year 2027 are paying all Permit Issuance fees subject to the Surcharge, stabilizing the revenue stream at the level of the Baseline Revenue Assumption (\$66.9 M) and the calculation of the revenue is shown as follows:

$((\$66.9 \text{ M} \times 100\%) / 12) \times 11.25\% = \$627\text{K}$  per month, or \$7.5 Million for the year

*Note: This calculation does not take into account any inflationary adjustment to the Plan Check or other fees subject to the Surcharge. Absent a decline in development activity, Increases in these fees will further increase revenue from the Surcharge.*

# ATTACHMENT 8

## Example Projects

### Statement of Disclaimer on Example Projects

The example projects provided in this attachment are based on actual projects obtained from the City of San Diego Development Services Department Accela development project tracking system. Project data was retrieved on or about February 1, 2026, and reflects projects active in the Accela system as of that date.

The fee information presented for these example projects represents a snapshot in time and may not reflect all fees ultimately assessed to a given project. Fee amounts, project scope, permit activity, and applicable charges may have changed since the data was retrieved and remain subject to change throughout the project review and permitting process.

The surcharge fee illustrations presented herein are based on the fees applied to the projects in the Accela system at the time the data was extracted. As such, they may not reflect the fees that would apply if the projects were submitted or processed as new projects today. The purpose of these examples is to illustrate the general order of magnitude and relative impact of the proposed General Plan Maintenance Fee (GPMF) Surcharge across a range of project types, rather than to establish precise fee amounts for any specific project.

Staff endeavored to include a broad range of representative project types to demonstrate the potential impact of the proposed GPMF Surcharge, including large-scale residential developments, single-homeowner projects, tenant improvements, and various commercial, hotel, and industrial developments.

# ATTACHMENT 8 - EXAMPLE PROJECTS Page 1 of 11

## PROJECT OVERVIEW



\*Image for illustrative purposes only

**Example Project Number: #1**

**Project Type:** Industrial Building

**Total Number of Units/SF :** 118,000 SF

**Description:** One-story industrial building with mezzanine, loading docks, & truck ramp.

## PROJECT FEE SUMMARY

Description	Amount
Total Project Fees	\$447,877
<b>Fees Subject to Surcharge</b>	
Plan Check Fees	\$27,475
Permit/Entitlement/Project Review Fees	\$0
Administrative Fees	\$755
<b>Total Fees Subject to Surcharge</b>	<b>\$28,229</b>
<b>Proposed GPMF Surcharge (11.25%)</b>	<b>\$3,176</b>
<b>Proposed GPMF as % of Total Fees</b>	<b>0.7%</b>

#3

## PROJECT OVERVIEW



\*Image for illustrative purposes only

**Example Project Number: #2**

**Project Type:** Apartment Building

**Total Number of Units/SF :** 138 units

**Description:** Affordable senior housing development

## PROJECT FEE SUMMARY

Description	Amount
Total Project Fees	\$1,343,884
<b>Fees Subject to Surcharge</b>	
Plan Check Fees	\$53,150
Mapping/Permit/Project Review Fees	\$0
Administrative Fees	\$2,053
<b>Total Fees Subject to Surcharge</b>	<b>\$55,203</b>
<b>Proposed GPMF (11.25% Surcharge) Per Unit</b>	<b>\$6,210 \$45</b>
<b>Proposed GPMF as % of Total Fees</b>	<b>0.5%</b>

#4

# ATTACHMENT 8 - EXAMPLE PROJECTS – Page 2 of 11

## PROJECT OVERVIEW



\*Image for illustrative purposes only

**Example Project Number: #3**

**Project Type:** Commercial - Core and Shell Building

**Total Number of Units/SF :** 213,938 SF

**Description:** Core and shell shared buildings on a vacant parcel. (2 Bldgs Total)

## PROJECT FEE SUMMARY

Description	Amount
Total Project Fees	\$964,052
<b>Fees Subject to Surcharge</b>	
Plan Check Fees	\$46,432
Permit/Entitlement/Project Review Fees	\$0
Administrative Fees	\$1,423
<b>Total Fees Subject to Surcharge</b>	<b>\$47,856</b>
<b>Proposed GPMF Surcharge (11.25%)</b>	<b>\$5,384</b>
<b>Proposed GPMF as % of Total Fees</b>	<b>0.6%</b>

#2

## PROJECT OVERVIEW



\*Image for illustrative purposes only

**Example Project Number: #4**

**Project Type:** Apartment building

**Total Number of Units/SF :** 432 Units

**Description:** Construction of five story apartment building, 445,831 square feet.

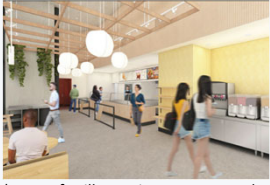
## PROJECT FEE SUMMARY

Description	Amount
Total Project Fees	\$3,136,752
<b>Fees Subject to Surcharge</b>	
Plan Check Fees	\$176,078
Mapping/Permit/Project Review Fees	\$0
Administrative Fees	\$1,958
<b>Total Fees Subject to Surcharge</b>	<b>\$178,035</b>
<b>Proposed GPMF (11.25% Surcharge) Per Unit</b>	<b>\$20,029 \$46</b>
<b>Proposed GPMF as % of Total Fees</b>	<b>0.6%</b>

#6

# ATTACHMENT 8 - EXAMPLE PROJECTS – Page 3 of 11

## PROJECT OVERVIEW



\*Image for illustrative purposes only

**Example Project Number:** #5

**Project Type:** Tenant Improvements

**Total Number of Units/SF :** 2,007 SF

**Description:** Interior tenant improvement in a commercial building to establish a new restaurant, 2,007 sq.ft.

## PROJECT FEE SUMMARY

Description	Amount
Total Project Fees	\$15,832
<b>Fees Subject to Surcharge</b>	
Plan Check Fees	\$2,239
Permit/Entitlement/Project Review Fees	\$0
Administrative Fees	\$792
<b>Total Fees Subject to Surcharge</b>	<b>\$3,032</b>
<b>Proposed GPMF Surcharge (11.25%)</b>	<b>\$341</b>
<b>Proposed GPMF as % of Total Fees</b>	<b>2.2%</b>

#7

## PROJECT OVERVIEW



\*Image for illustrative purposes only

**Example Project Number:** #6

**Project Type:** Mixed-Use

**Total Number of Units/SF :** 125 Units

**Description:** Construction of new eight-story mixed use multi-family building with ground-floor commercial space, upper-level residential units, and one level of basement parking.

## PROJECT FEE SUMMARY

Description	Amount
Total Project Fees	\$698,546
<b>Fees Subject to Surcharge</b>	
Plan Check Fees	\$166,700
Mapping/Permit/Project Review Fees	\$0
Administrative Fees	\$659
<b>Total Fees Subject to Surcharge</b>	<b>\$167,359</b>
<b>Proposed GPMF (11.25% Surcharge) Per Unit</b>	<b>\$18,828 \$151</b>
<b>Proposed GPMF as % of Total Fees</b>	<b>2.7%</b>

#10

# ATTACHMENT 8 - EXAMPLE PROJECTS- Page 4 of 11

## PROJECT OVERVIEW



\*Image for illustrative purposes only

**Example Project Number: #7**

**Project Type:** Mixed-Use

**Total Number of Units/SF :** 89 Units

**Description:** Construction of eight-story mixed use building with 52 residential units, 37 visitor units, S-2 garage and A-3 assembly space.

### PROJECT FEE SUMMARY

Description	Amount
Total Project Fees	\$158,278
<b>Fees Subject to Surcharge</b>	
Plan Check Fees	\$43,533
Permit/Entitlement/Project Review Fees	\$0
Administrative Fees	\$2,946
<b>Total Fees Subject to Surcharge</b>	<b>\$46,479</b>
<b>Proposed GPMF Surcharge (11.25%) Per Unit</b>	<b>\$5,229 \$59</b>
<b>Proposed GPMF as % of Total Fees</b>	<b>3.3%</b>

#12

## PROJECT OVERVIEW



\*Image for illustrative purposes only

**Example Project Number: #8**

**Project Type:** Construction – 10 ADUs

**Total Number of Units/SF :** 10 Units

**Description:** Ten detached ADUs arranged in five different buildings, with two ADUs per building.

### PROJECT FEE SUMMARY

Description	Amount
Total Project Fees	\$164,726
<b>Fees Subject to Surcharge</b>	
Plan Check Fees	\$17,682
Mapping/Permit/Project Review Fees	\$0
Administrative Fees	\$165
<b>Total Fees Subject to Surcharge</b>	<b>\$17,846</b>
<b>Proposed GPMF (11.25% Surcharge) Per Unit</b>	<b>\$2,008 \$201</b>
<b>Proposed GPMF as % of Total Fees</b>	<b>1.2%</b>

#14

# ATTACHMENT 8 - EXAMPLE PROJECTS – Page 5 of 11

## PROJECT OVERVIEW



\*Image for illustrative purposes only

**Example Project Number: #9**

**Project Type:** Construction - Multi Family and ADUs

**Total Number of Units/SF :** 12 Units

**Description:** Maintaining a 2,200 SF structure and adding approximately 6,800 SF of new residential space for a total of 12 units.

## PROJECT FEE SUMMARY

Description	Amount
Total Project Fees	\$32,479
<b>Fees Subject to Surcharge</b>	
Plan Check Fees	\$10,829
Permit/Entitlement/Project Review Fees	\$89
Administrative Fees	\$659
<b>Total Fees Subject to Surcharge</b>	<b>\$11,577</b>
<b>Proposed GPMF Surcharge (11.25%) Per Unit</b>	<b>\$1,302 \$109</b>
<b>Proposed GPMF as % of Total Fees</b>	<b>4.0%</b>

#15

## PROJECT OVERVIEW



\*Image for illustrative purposes only

**Example Project Number: #10**

**Project Type:** Construction – Commercial Building

**Total Number of Units/SF :** 198,000 SF

**Description:** Building, electrical, mechanical and plumbing permits for constructing a new four-story office building and a new four-story parking garage.

## PROJECT FEE SUMMARY

Description	Amount
Total Project Fees	\$154,437
<b>Fees Subject to Surcharge</b>	
Plan Check Fees	\$60,591
Mapping/Permit/Project Review Fees	\$0
Administrative Fees	\$147
<b>Total Fees Subject to Surcharge</b>	<b>\$60,737</b>
<b>Proposed GPMF (11.25% Surcharge)</b>	<b>\$6,833</b>
<b>Proposed GPMF as % of Total Fees</b>	<b>4.4%</b>

#17

# ATTACHMENT 8 - EXAMPLE PROJECTS – Page 6 of 11

## PROJECT OVERVIEW



\*Image for illustrative purposes only

**Example Project Number:** #11

**Project Type:** Construction – Self Storage

**Total Number of Units/SF :** 141,000 SF

**Description:** New self storage building including basement and office.

## PROJECT FEE SUMMARY

Description	Amount
Total Project Fees	\$256,949
<b>Fees Subject to Surcharge</b>	
Plan Check Fees	\$66,086
Permit/Entitlement/Project Review Fees	\$0
Administrative Fees	\$2,950
<b>Total Fees Subject to Surcharge</b>	<b>\$69,035</b>
<b>Proposed GPMF Surcharge (11.25%)</b>	<b>\$7,766</b>
<b>Proposed GPMF as % of Total Fees</b>	<b>3.0%</b>

#18

## PROJECT OVERVIEW



\*Image for illustrative purposes only

**Example Project Number:** #12

**Project Type:** Office Tenant Improvement

**Total Number of Units/SF :** 3,420 SF

**Description:** Renovation of an existing building including mechanical, electrical, and plumbing upgrades for a seven-story medical office.

## PROJECT FEE SUMMARY

Description	Amount
Total Project Fees	\$12,785
<b>Fees Subject to Surcharge</b>	
Plan Check Fees	\$4,122
Mapping/Permit/Project Review Fees	\$0
Administrative Fees	\$740
<b>Total Fees Subject to Surcharge</b>	<b>\$4,863</b>
<b>Proposed GPMF (11.25% Surcharge)</b>	<b>\$547</b>
<b>Proposed GPMF as % of Total Fees</b>	<b>4.3%</b>

#23

# ATTACHMENT 8 - EXAMPLE PROJECTS – Page 7 of 11

## PROJECT OVERVIEW



\*Image for illustrative purposes only

**Example Project Number: #13**

**Project Type:** ADU Garage Conversion

**Total Number of Units/SF :** 1 Unit

**Description:** Converting an existing garage into an ADU attached to a second-floor dwelling unit and accessory to an existing detached single dwelling unit creating two-bedroom, two-bathroom ADU.

### PROJECT FEE SUMMARY

Description	Amount
Total Project Fees	\$4,289
<b>Fees Subject to Surcharge</b>	
Plan Check Fees	\$783
Permit/Entitlement/Project Review Fees	\$178
Administrative Fees	\$0
<b>Total Fees Subject to Surcharge</b>	<b>\$961</b>
<b>Proposed GPMF Surcharge (11.25%)</b>	<b>\$108</b>
<b>Proposed GPMF as % of Total Fees</b>	<b>2.5%</b>

#24

## PROJECT OVERVIEW



\*Image for illustrative purposes only

**Example Project Number: #14**

**Project Type:** Re-stucco, drywall and stair repair replacement

**Total Number of Units/SF :** 300 SF

**Description:** Re-stucco, damage repair and replacement of drywall to an existing multi-dwelling unit.

### PROJECT FEE SUMMARY

Description	Amount
Total Project Fees	\$1,827
<b>Fees Subject to Surcharge</b>	
Plan Check Fees	\$0
Mapping/Permit/Project Review Fees	\$177
Administrative Fees	\$0
<b>Total Fees Subject to Surcharge</b>	<b>\$177</b>
<b>Proposed GPMF (11.25% Surcharge)</b>	<b>\$20</b>
<b>Proposed GPMF as % of Total Fees</b>	<b>1.1%</b>

#25

# ATTACHMENT 8 - EXAMPLE PROJECTS - Page 8 of 11

## PROJECT OVERVIEW



\*Image for illustrative purposes only

**Example Project Number:** #15

**Project Type:** Roof Repair

**Total Number of Units/SF :**

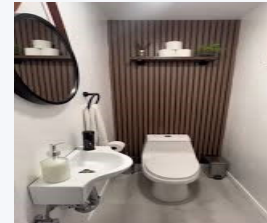
**Description:** Repair and replacement of damaged roofing, rafters and ceiling in an existing single-story dwelling unit.

### PROJECT FEE SUMMARY

Description	Amount
Total Project Fees	\$1,498
<b>Fees Subject to Surcharge</b>	
Plan Check Fees	\$330
Permit/Entitlement/Project Review Fees	\$178
Administrative Fees	\$0
<b>Total Fees Subject to Surcharge</b>	<b>\$507</b>
<b>Proposed GPMF Surcharge (11.25%)</b>	<b>\$57</b>
<b>Proposed GPMF as % of Total Fees</b>	<b>3.8%</b>

#26

## PROJECT OVERVIEW



\*Image for illustrative purposes only

**Example Project Number:** #16

**Project Type:** New Bathroom & Existing Bathroom Remodel

**Total Number of Units/SF :** 116.5 SF

**Description:** Convert an existing closet into a new bathroom and a remodel of an existing hall bathroom in an existing single dwelling unit.

### PROJECT FEE SUMMARY

Description	Amount
Total Project Fees	\$3,549
<b>Fees Subject to Surcharge</b>	
Plan Check Fees	\$783
Mapping/Permit/Project Review Fees	\$0
Administrative Fees	\$0
<b>Total Fees Subject to Surcharge</b>	<b>\$783</b>
<b>Proposed GPMF (11.25% Surcharge)</b>	<b>\$88</b>
<b>Proposed GPMF as % of Total Fees</b>	<b>2.5%</b>

#28

# ATTACHMENT 8 - EXAMPLE PROJECTS - Page 9 of 11

## PROJECT OVERVIEW



\*Image for illustrative purposes only

**Example Project Number:** #17

**Project Type:** New hotel construction

**Total Number of Units/SF :** 100 guest rooms

**Description:** New 77,600 SF 4-story hotel with 100 guest rooms.

## PROJECT FEE SUMMARY

Description	Amount
Total Project Fees	\$152,242
<b>Fees Subject to Surcharge</b>	
Plan Check Fees	\$68,926
Permit/Entitlement/Project Review Fees	\$0
Administrative Fees	\$1,235
<b>Total Fees Subject to Surcharge</b>	<b>\$70,161</b>
<b>Proposed GPMF Surcharge (11.25%)</b>	<b>\$7,893</b>
<b>Proposed GPMF as % of Total Fees</b>	<b>5.2%</b>

## PROJECT OVERVIEW



\*Image for illustrative purposes only

**Example Project Number:** #18

**Project Type:** New hotel construction

**Total Number of Units/SF :** 263 guest rooms

**Description:** New 16-story hotel with 263 guest rooms.

## PROJECT FEE SUMMARY

Description	Amount
Total Project Fees	\$864,951
<b>Fees Subject to Surcharge</b>	
Plan Check Fees	\$128,651
Mapping/Permit/Project Review Fees	\$5,775
Administrative Fees	\$1,547
<b>Total Fees Subject to Surcharge</b>	<b>\$135,973</b>
<b>Proposed GPMF Surcharge (11.25%)</b>	<b>\$15,297</b>
<b>Proposed GPMF as % of Total Fees</b>	<b>1.8%</b>

# ATTACHMENT 8 - EXAMPLE PROJECTS - Page 10 of 11

## PROJECT OVERVIEW



\*Image for illustrative purposes only

**Example Project Number:** #19

**Project Type:** Construction – 1 new ADU

**Total Number of Units/SF :** 1 ADU

**Description:** Construction of 1 new 250 sf ADU

## PROJECT FEE SUMMARY

Description	Amount
Total Project Fees	\$5,701
<b>Fees Subject to Surcharge</b>	
Plan Check Fees	\$2,362
Permit/Entitlement/Project Review Fees	\$178
Administrative Fees	\$0
<b>Total Fees Subject to Surcharge</b>	<b>\$2,540</b>
<b>Proposed GPMF Surcharge (11.25%)</b>	<b>\$286</b>
<b>Proposed GPMF as % of Total Fees</b>	<b>5.0%</b>

## PROJECT OVERVIEW



\*Image for illustrative purposes only

**Example Project Number:** #20

**Project Type:** Construction – 2 new ADUs

**Total Number of Units/SF :** 2 ADUs

**Description:** Construction of 2 new ADUs.  
Unit #1 is 390 sf, unit #2 is 429 sf.

## PROJECT FEE SUMMARY

Description	Amount
Total Project Fees	\$5,538
<b>Fees Subject to Surcharge</b>	
Plan Check Fees	\$840
Mapping/Permit/Project Review Fees	\$178
Administrative Fees	\$0
<b>Total Fees Subject to Surcharge</b>	<b>\$1,018</b>
<b>Proposed GPMF Surcharge (11.25%) Per Unit</b>	<b>\$115 \$57</b>
<b>Proposed GPMF as % of Total Fees</b>	<b>2.1%</b>

# ATTACHMENT 8 - EXAMPLE PROJECTS - Page 11 of 11

## PROJECT OVERVIEW



**Example Project Number:** #21  
**Project Type:** Construction – 2 new ADUs  
**Total Number of Units/SF :** 2 new ADUs  
**Description:** Construction of 2 new ADUs. Each unit is 609 sf.

\*Image for illustrative purposes only

## PROJECT FEE SUMMARY

Description	Amount
Total Project Fees	\$17,729
<b>Fees Subject to Surcharge</b>	
Plan Check Fees	\$7,539
Permit/Entitlement/Project Review Fees	\$0
Administrative Fees	\$0
<b>Total Fees Subject to Surcharge</b>	<b>\$7,539</b>
<b>Proposed GPMF Surcharge (11.25%) Per Unit</b>	<b>\$848</b> <b>\$424</b>
<b>Proposed GPMF as % of Total Fees</b>	<b>4.8%</b>

## PROJECT OVERVIEW



**Example Project Number:** #22  
**Project Type:** Construction - 1 new ADU  
**Total Number of Units/SF :** 1 new ADU  
**Description:** New detached single-story ADU. Unit is 675 sf.

\*Image for illustrative purposes only

## PROJECT FEE SUMMARY

Description	Amount
Total Project Fees	\$22,750
<b>Fees Subject to Surcharge</b>	
Plan Check Fees	\$12,307
Mapping/Permit/Project Review Fees	\$178
Administrative Fees	\$0
<b>Total Fees Subject to Surcharge</b>	<b>\$12,484</b>
<b>Proposed GPMF Surcharge (11.25%)</b>	<b>\$1,404</b>
<b>Proposed GPMF as % of Total Fees</b>	<b>6.2%</b>