



Pure Water San Diego

2.3 M

wastewater
customers
served



6,300

miles of pipelines
are managed



1.4 M

residents receive
clean and safe
drinking water



**24/7
365**

operations ensure the
delivery of safe and
clean water



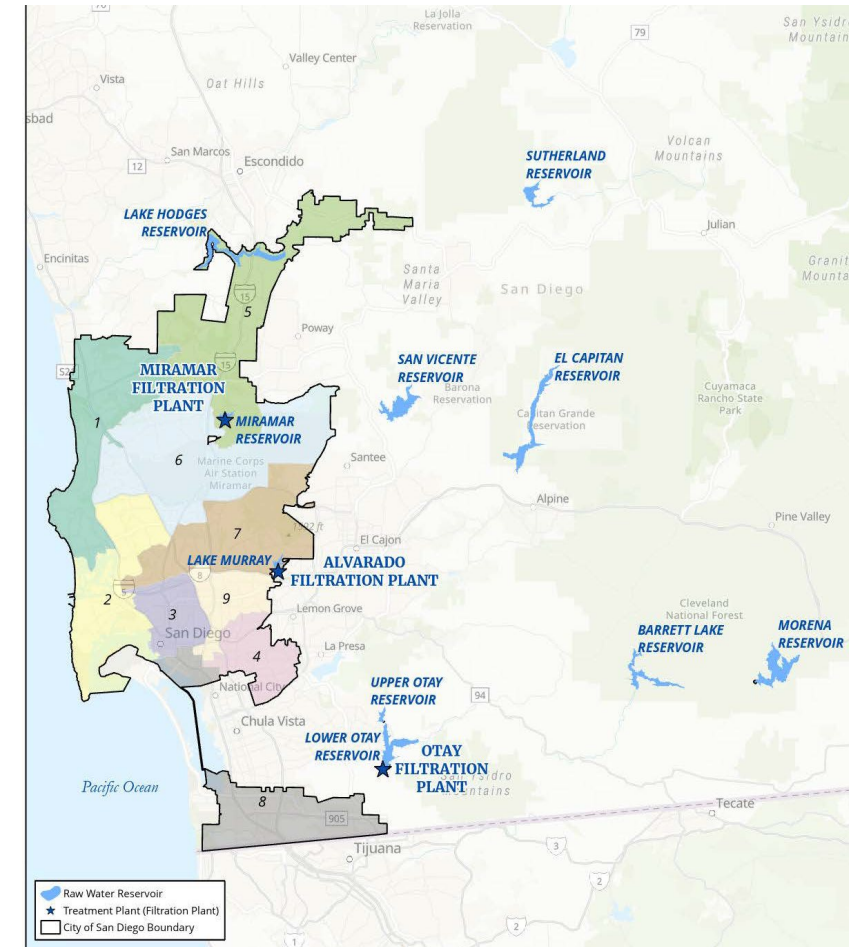
13 divisions
and

2,000
team members



Our Water Service Area

- Provide water service to San Diego, Coronado, and Imperial Beach (wholesale water)
- One of the nation's largest and most complex water systems, spanning from Escondido to the U.S./Mexico border
- Serves customers at seven major military bases
- HUGE system: Our service area is so large it could fit four (4) of Seattle's entire retail water systems and seven (7) of San Francisco's whole retail water systems into our retail service area
- Water service is often invisible until there's a disruption or main break
- Delivering safe, reliable water to San Diego and safely removing wastewater takes a massive and carefully coordinated effort, 24/7/365



Our Wastewater System

- San Diego's wastewater system includes 2 water reclamation plants and the Point Loma Wastewater Treatment Plant, which handle wastewater from 2.3 million people across the region
- The system relies on 81 pump stations to move wastewater away from homes and businesses efficiently
- This infrastructure ensures safe, consistent service 24/7/365
- **Looking ahead:** Pure Water San Diego will treat wastewater to provide nearly half of the City's water locally by 2035 and will significantly reduce treated discharges from the Point Loma Wastewater Treatment Plant



Point Loma Wastewater Treatment Plant

- Regional treatment and ocean discharge
- Geographically challenging location
- Enhanced primary treatment
- Secondary treatment is the national standard
- Modified permit



PLWTP - 2022



PLWTP - 1963

Water Supply Challenges



Limited local & imported supplies



Bay Delta constraints



Natural disaster risk



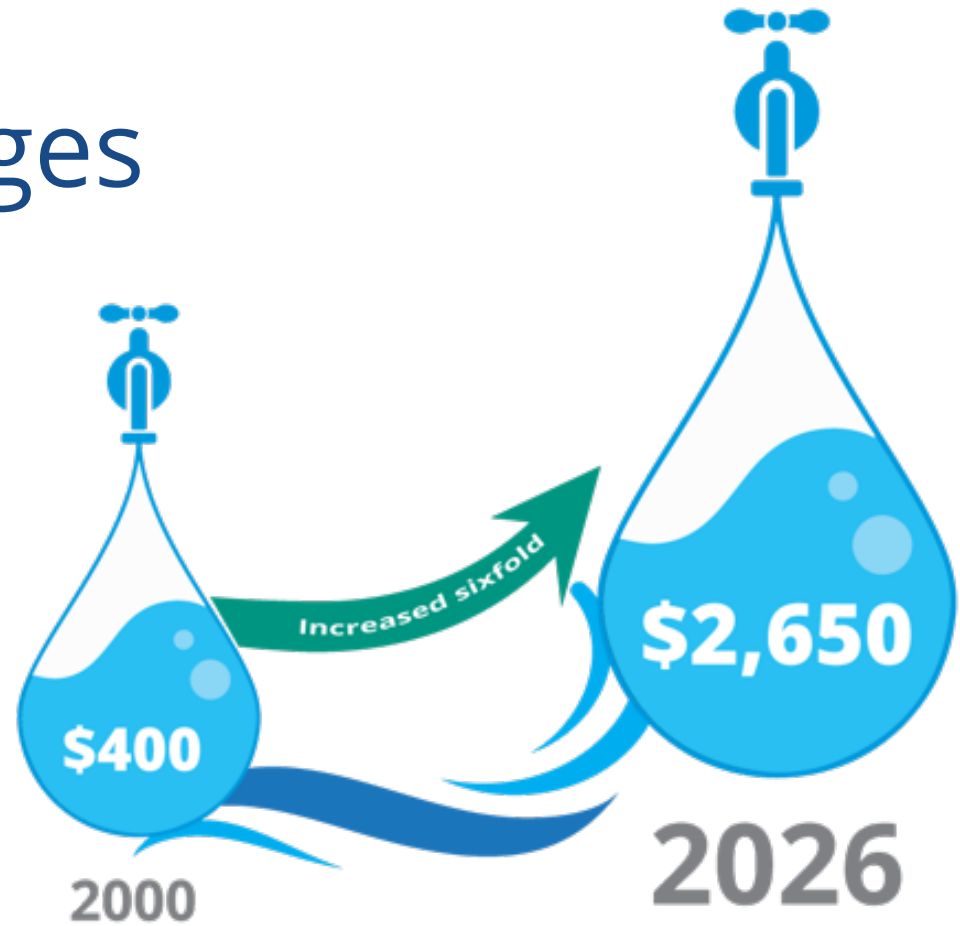
Rising imported water costs

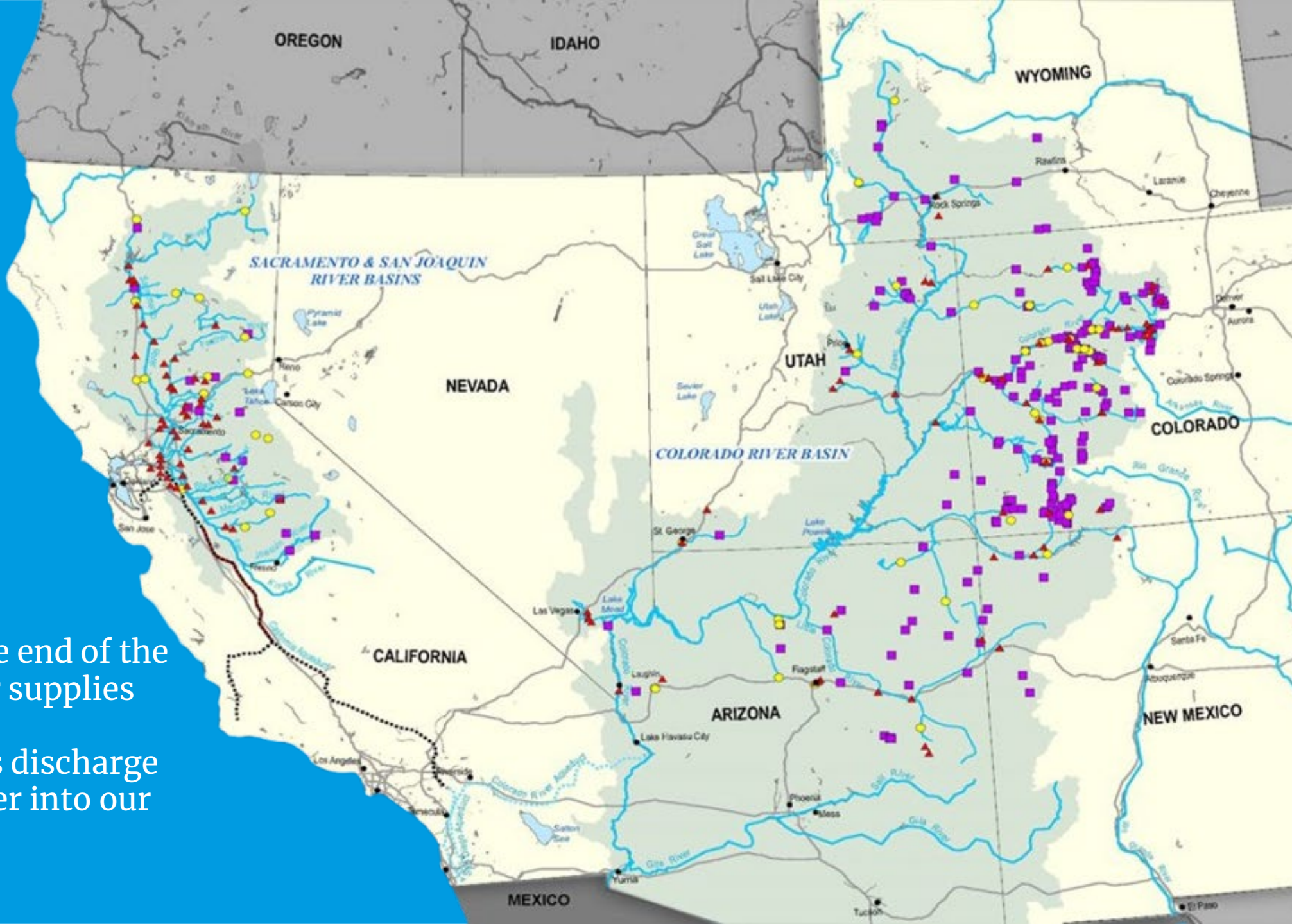


Recurring drought



Climate change





- San Diego is at the end of the pipeline for water supplies
- Over 350 agencies discharge treated wastewater into our water supply

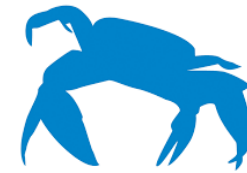
Coastal Environmental Rights Foundation

ENVIRONMENTAL GROUPS

- San Diego Coastkeeper
- Surfrider Foundation
- Coast Environmental Rights Foundation
- San Diego Audubon Society
 - Parties to 2014 Cooperative Agreement

METRO JPA

- 12 Participating Agencies
- Serviced by City of San Diego Metro System
- Share in Metro System capital and O&M costs, ~33%



SAN DIEGO
COASTKEEPER®



METRO JPA

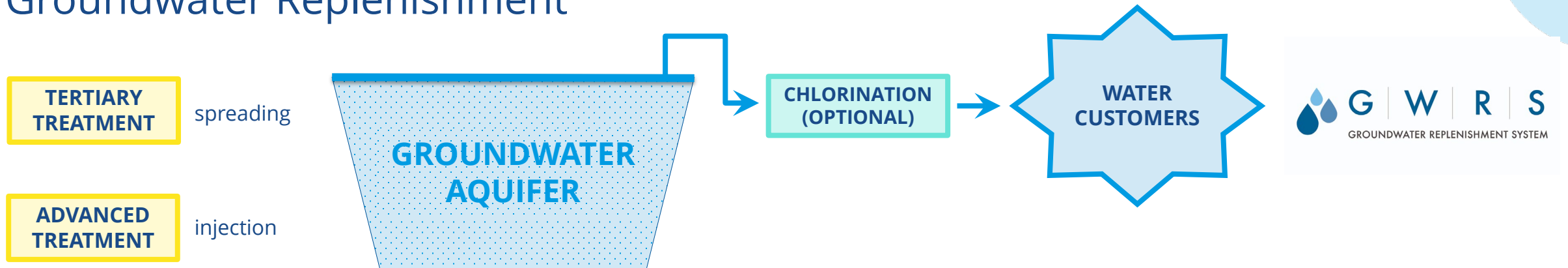
Pure Water San Diego

- **Big vision, local benefit:** Pure Water San Diego is an advanced water purification program that will provide nearly half of San Diego's water supply locally by 2035
 - Phase 1 will produce 30 MGD by 2027
 - Phase 2 will produce an additional 53 MGD by 2035
- **Investing in our water's future:** Construction of Phase 1 is over 90% complete, with commissioning beginning this summer and first deliveries of advanced purified water to Miramar Reservoir by the end of 2026
- **Science you can trust:** The program uses a 5-step purification process, that ultimately helped define the regulations for Direct Potable Reuse in California



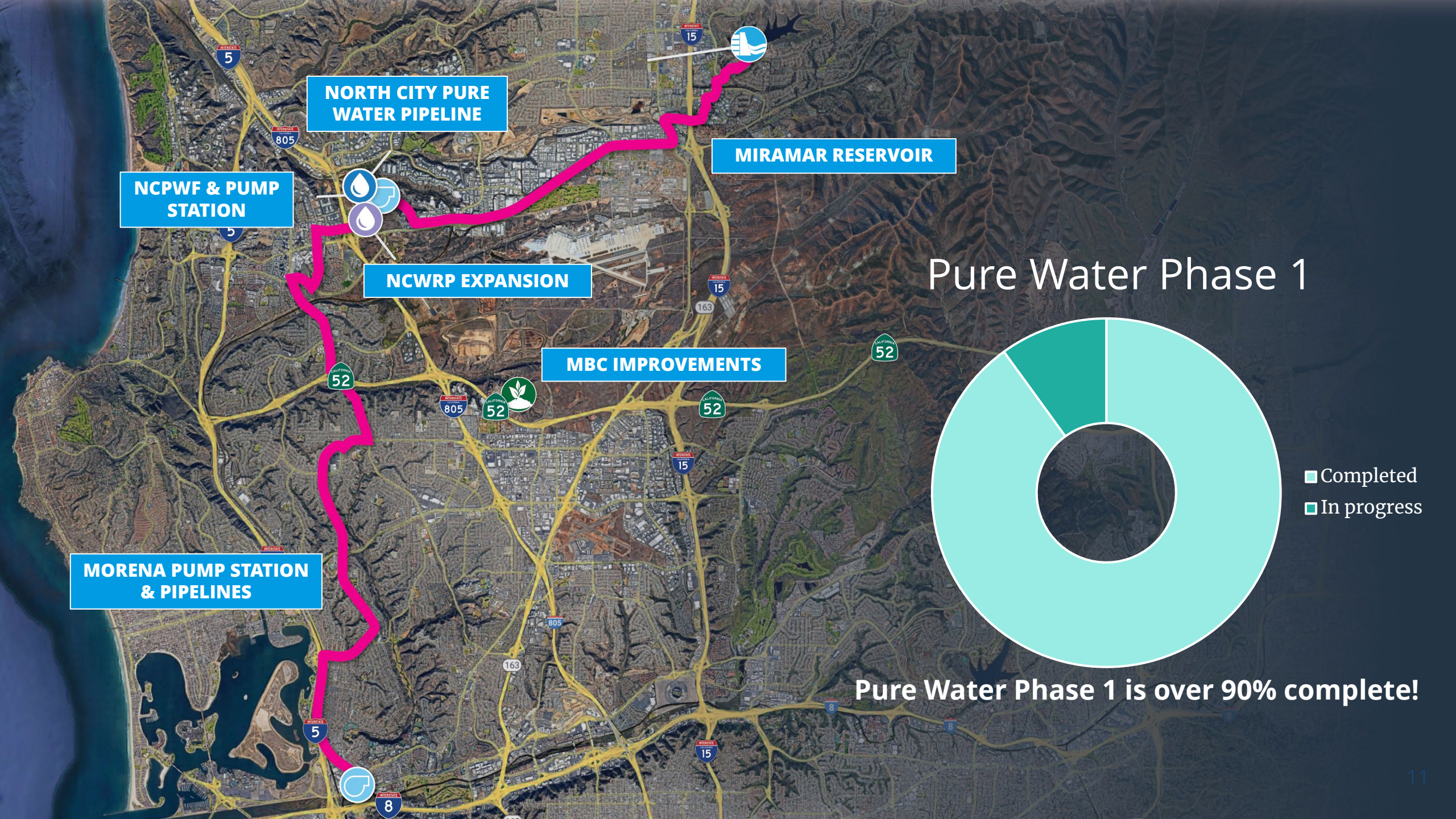
Indirect Potable Reuse

Groundwater Replenishment



Surface Water Augmentation





NORTH CITY PURE WATER PIPELINE

MIRAMAR RESERVOIR

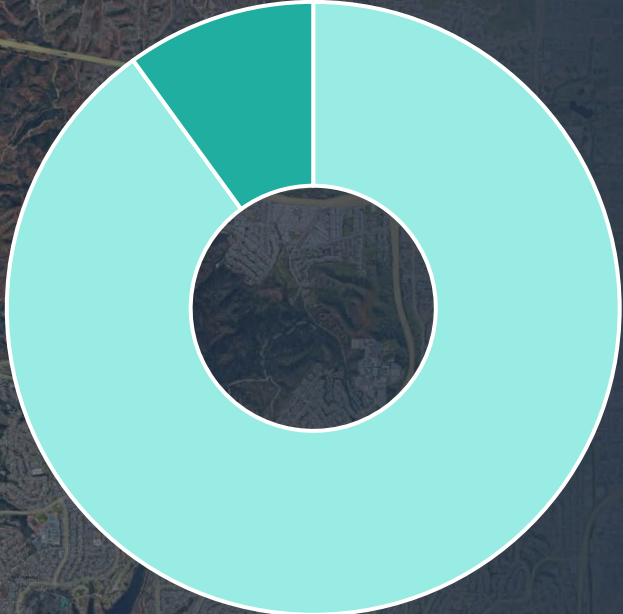
NCPWF & PUMP STATION

NCWRP EXPANSION

MBC IMPROVEMENTS

MORENA PUMP STATION & PIPELINES

Pure Water Phase 1



- Completed
- In progress

Pure Water Phase 1 is over 90% complete!

Construction Contract	Bid Award	Contractor
Morena Pump Station	\$110.4M	Flatiron
Morena Southern/Middle Alignment	\$129.7M	Sukut
Morena Northern Alignment	\$95.2M	OHL
Penasquitos Pump Station Oxygenation System	\$4.4 M	Blue Pacific Engineering
Water Reclamation Plant Expansion	\$255.1M	Kiewit
Water Reclamation Plant Equalization Basin	\$11.9M	Kiewit
Metro Biosolids Center Improvements	\$40.1M	PCL
NCWRP/NCPWF Early Sitework	\$16.4M	AECOM/ Shimmick
Pure Water Facility and Pump Station	\$356.7M	Shimmick
Pure Water Pipeline	\$123.5M	W.A. Rasic
Miramar Reservoir Water Quality Monitoring System	\$1M	Soundnine, Inc.
Miramar Reservoir PS	\$12.7M	Shimmick
Total	\$1.16 B	Authorized: \$1.21 B

Phase 1 Financing

U.S. EPA and State Revolving Fund (SRF) Loans

- USEPA WIFIA Program: \$733.5 million total
 - \$614 million @ 1.29%, \$119.5 million @ 1.82%
 - Reimbursements as of December 1, 2025: \$581.6M
- SRF: \$664 million total
 - Interest rates range from 0.8% to 1.1%
 - Reimbursements as of December 1, 2025: \$415.8M

Grants

- The City has been awarded \$111.06 M in grants
- Including \$29.6 M from Bureau of Reclamation

Metropolitan Water District Local Resources Program

- 25-year agreement providing reimbursement of \$340/acre-ft produced for up to \$285M over the lifecycle of the agreement



— BUREAU OF —
RECLAMATION



Pure Water Cost Update

- Double the value for San Diego ratepayers
- Cost-competitive, drought resilient, local supply
- Significant avoided wastewater costs
- Pure Water Unit Cost:
 - \$2,105/AF for water customers
 - \$1,422/AF for wastewater customers
 - Less than both imported water and desalination

Gallon of
Pure Water
= \$0.011



Looking Ahead

- **Phase 1:** Will be fully operational and producing 30 MGD in 2027
- **Phase 2:** Demonstration facility beginning operations this month, will be the first Demo Facility to directly compare IPR and DPR trains simultaneously
- Program planning for Phase 2 is expected to be completed by Spring 2027
- Many lessons learned from Phase 1 are being incorporated into this important planning effort for Phase 2



Pure Water Phase 1 and Phase 2 Facilities

Phase 2 facilities have not been finalized and are based on assumptions from previous work

Figure is a schematic and not intended to illustrate conveyance alignments



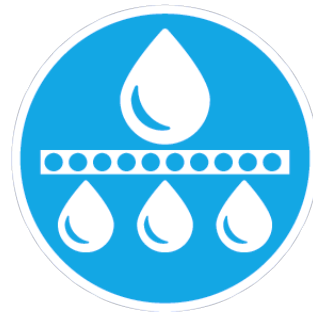
Pure Water Facility Process



OZONATION



**BIOLOGICALLY
ACTIVATED
CARBON
FILTERS**



**MEMBRANE
FILTRATION**



**REVERSE
OSMOSIS**



**ULTRAVIOLET
DISINFECTION
ADVANCED
OXIDATION**

The logo features the letters 'S' and 'D' in a bold, white, sans-serif font. To the right of the 'D' is a graphic element consisting of three overlapping semi-circular shapes: a yellow one on top, a teal one on the bottom, and a light blue one in the middle. The background is a solid dark blue. There are also decorative elements on the left and bottom right of the page, including concentric circles and wavy lines in various shades of blue and white.

SD