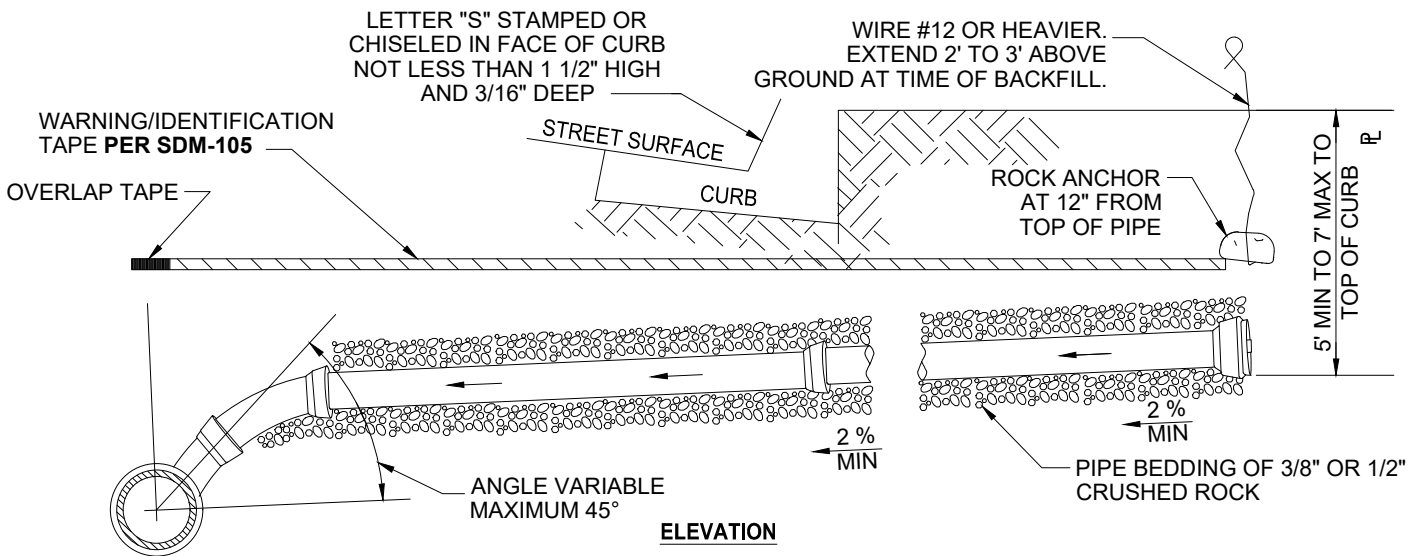


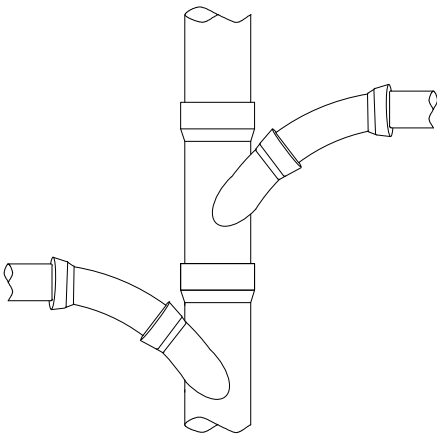
PLAN



ELEVATION

NOTES

1. IN NO CASE SHALL A LATERAL CONNECT TO THE SEWER MAIN DIRECTLY ON TOP OF THE PIPE.
2. ALL JOINTS ON SEWER LATERAL PIPE SHALL BE COMPRESSION TYPE OR APPROVED SOLVENT WELD.
3. LATERAL SHALL EXTEND TO PROPERTY LINE UNLESS SHOWN OTHERWISE ON PLANS.
4. DO NOT TAP HOLE AND INSERT LATERAL PIPE DIRECTLY INTO EXISTING MAIN. ALL CONNECTIONS TO EXISTING MAINS SHALL BE MADE USING AN APPROVED SADDLE FOR CLAY PIPE OR APPROVED WYE FOR PVC PIPE.
5. ALL CONNECTIONS TO NEWLY INSTALLED SEWER MAINS SHALL BE MADE USING A WYE MATCHING THE MATERIAL OF THE MAIN.



DETAIL SHOWING THE MANNER OF CONNECTING OPPOSITE LATERALS TO A SEWER MAIN. TWO CONNECTIONS SHALL NOT BE MADE IN THE SAME LENGTH OF PIPE.

LEGEND ON PLANS



CITY OF SAN DIEGO – STANDARD DRAWING

RECOMMENDED BY THE CITY OF SAN DIEGO STANDARDS COMMITTEE

**HOUSE CONNECTION
(SEWER LATERAL)**

Alaine James 05/29/2026
COORDINATOR R.C.E. 81047 DATE

DRAWING NUMBER **SDS-105**

REVISION	BY	APPROVED	DATE
DETAIL	JP	A. OSKOUI	12/03
UPDATED	KA	J. NAGELVOORT	01/12
UPDATED	JN	J. NAGELVOORT	11/17
REDRAFTED	CD	J. NAGELVOORT	09/18
UPDATED	TP	J. NAGELVOORT	12/19
UPDATED	RC	R. AMEN	05/26