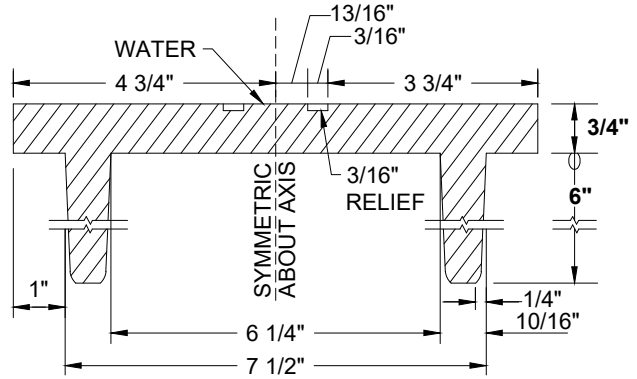




POTABLE
WATER
GATE WELL LID



CAST IRON VALVE WELL CAP DETAIL

INSIDE GATE WELL LID PAINTED IDENTIFICATION MARKING

COLOR	GATE WELL AND LIDS USED FOR:
RED	NORMALLY CLOSED SYSTEM VALVES (NCV)
WHITE	RESILIENT WEDGE GATE VALVES
YELLOW	BUTTERFLY VALVES

GATE WELL LID TOP COLOR & CONDITION

VALVE CONDITION	BUTTERFLY VALVE	GATE VALVE
PERMANENTLY CLOSED	RED	RED
TEMPORARILY CLOSED	YELLOW W/RED DOT	WHITE W/RED DOT
PERMANENTLY OPEN	YELLOW	WHITE

NOTES:

- GATE WELL LIDS SHALL BE CAST IRON WITH "CITY OF SAN DIEGO" AND THE WORD "WATER" FOR USE WITH POTABLE WATER SYSTEMS AND "RECYCLED" FOR USE WITH RECYCLED WATER SYSTEMS. LIDS SHALL INCLUDE A 1" LIFTING SLOT.
- FOR VALVES 20" AND LARGER, THE SIZE OF VALVE AND NUMBER OF TURNS SHALL BE PRINTED ON THE LID.

REVISION	BY	APPROVED	DATE	CITY OF SAN DIEGO – STANDARD DRAWING	RECOMMENDED BY THE CITY OF SAN DIEGO STANDARDS COMMITTEE
ORIGINAL*	KA	J. NAGELVOORT	01/12		GATE WELL IDENTIFICATION
UPDATED	RB	J. NAGELVOORT	02/16	COORDINATOR R.C.E. 81047 DATE	
REDRAFTED	CD	J. NAGELVOORT	09/18	DRAWING NUMBER	
UPDATED	CD	R. AMEN	05/26	SDW-152	