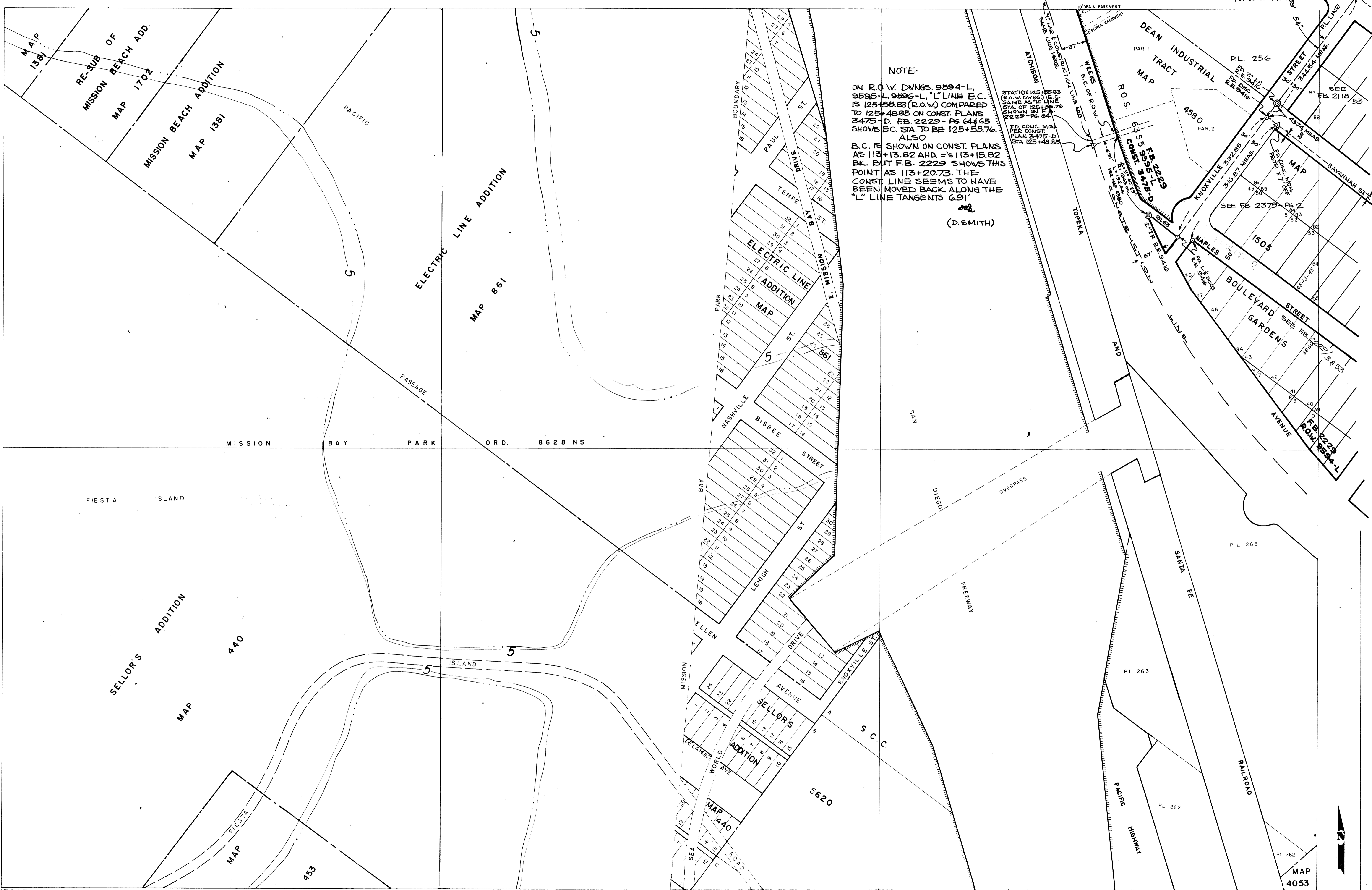


222 N

221 N

220 N



NOTE
 ON R.O.W. DWNGS. 9594-L, 9595-L, 9596-L, "L" LINE E.C. IS 125+48.85 (R.O.W.) COMPARED TO 125+48.85 ON CONST. PLANS 3475-D, F.B. 2229 - PG. 64 & 65 SHOWS E.C. STA. TO BE 125+55.76. ALSO B.C. IS SHOWN ON CONST. PLANS AS 113+13.82 AHD. = 113+15.82 BK. BUT F.B. 2229 SHOWS THIS POINT AS 113+20.73. THE CONST. LINE SEEMS TO HAVE BEEN MOVED BACK ALONG THE "L" LINE TANGENTS 6.91'
 (D. SMITH)

STATION 125+55.85 (R.O.W. DWNGS) IS THE SAME AS "L" LINE STA. OF 125+55.76 SHOWN IN F.B. 2229 - PG. 64.
 F.D. CONC. MON. PLAN 2475-D STA 125+48.85

BASE MAP
 DRAWN: 5-2-66
 REVISION:
 8-22-67 SD
 MERIDIAN: OCT-69

NOTE - INFORMATION ON THIS MYLAR WAS OBTAINED BY SURVEY OF MORENA BOULEVARD BY DONALD A. SMITH SURVEYOR, AND REFERENCES SHOWN THAT WERE USED BY HIM.

CITY OF SAN DIEGO, CALIFORNIA

SCALE 1 INCH = 100 FEET
 DATUM IS MEAN SEA LEVEL

- LEGEND
 ○ - LEAD & DISC
 ● - P.K. NAIL
 ⊙ - P.K. & DISC
 ⊗ - 2" PIPE
 ⊠ - HUB & DISC
 △ - CITY ENGINEERS CONTROL MONUMENT

222-1704	220-1707
220-1701	220-1707
218-1704	

220-1704