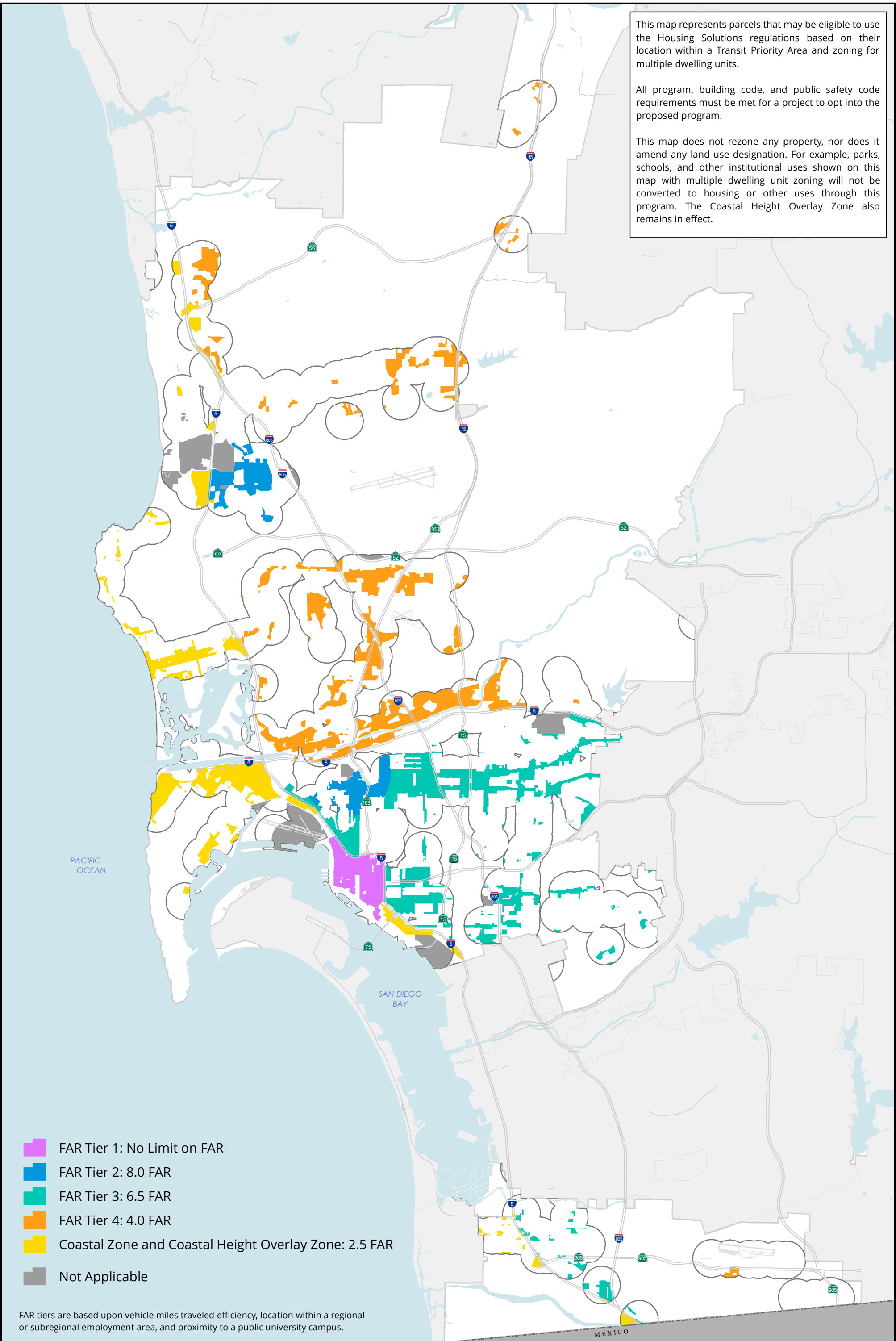


This map represents parcels that may be eligible to use the Housing Solutions regulations based on their location within a Transit Priority Area and zoning for multiple dwelling units.

All program, building code, and public safety code requirements must be met for a project to opt into the proposed program.

This map does not rezone any property, nor does it amend any land use designation. For example, parks, schools, and other institutional uses shown on this map with multiple dwelling unit zoning will not be converted to housing or other uses through this program. The Coastal Height Overlay Zone also remains in effect.



- FAR Tier 1: No Limit on FAR
- FAR Tier 2: 8.0 FAR
- FAR Tier 3: 6.5 FAR
- FAR Tier 4: 4.0 FAR
- Coastal Zone and Coastal Height Overlay Zone: 2.5 FAR
- Not Applicable

FAR tiers are based upon vehicle miles traveled efficiency, location within a regional or subregional employment area, and proximity to a public university campus.

Complete Communities Housing Solutions

Floor Area Ratio (FAR) Allowances : December 13, 2022



Date: 12/13/2022

Document Path: L:\GIS\GIS\LDC_POD\Complete Communities\CompleteCommunities HousingProgram.mxd