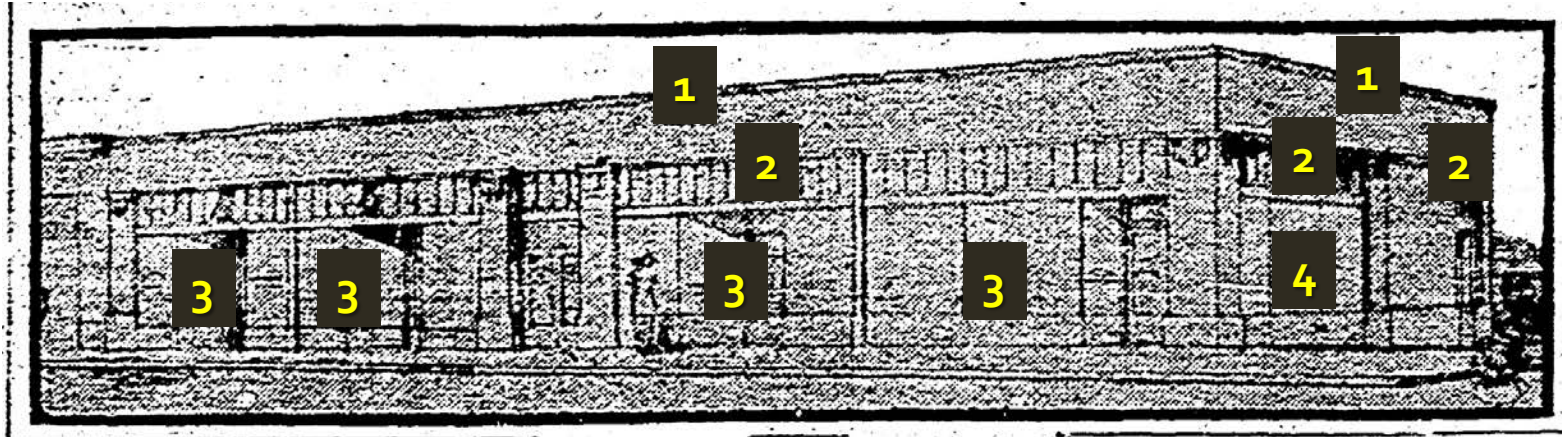


# Potential Historic Resource Evaluation

- The 301 Spruce Street property was cleared in April of 2021.
- The 2023 report failed to comply with the City's HRB Guidelines.
  - Even if the report was technically sound, the property is not historic
  - The property is not eligible under Criterion D (Notable Work of a Master)
  - Substantial modifications and alterations have adversely and irrevocably compromised the integrity of the structure

# POTENTIAL HISTORIC RESOURCE EVALUATION

Hebbard  
Architectura  
I Sketch  
(1913)



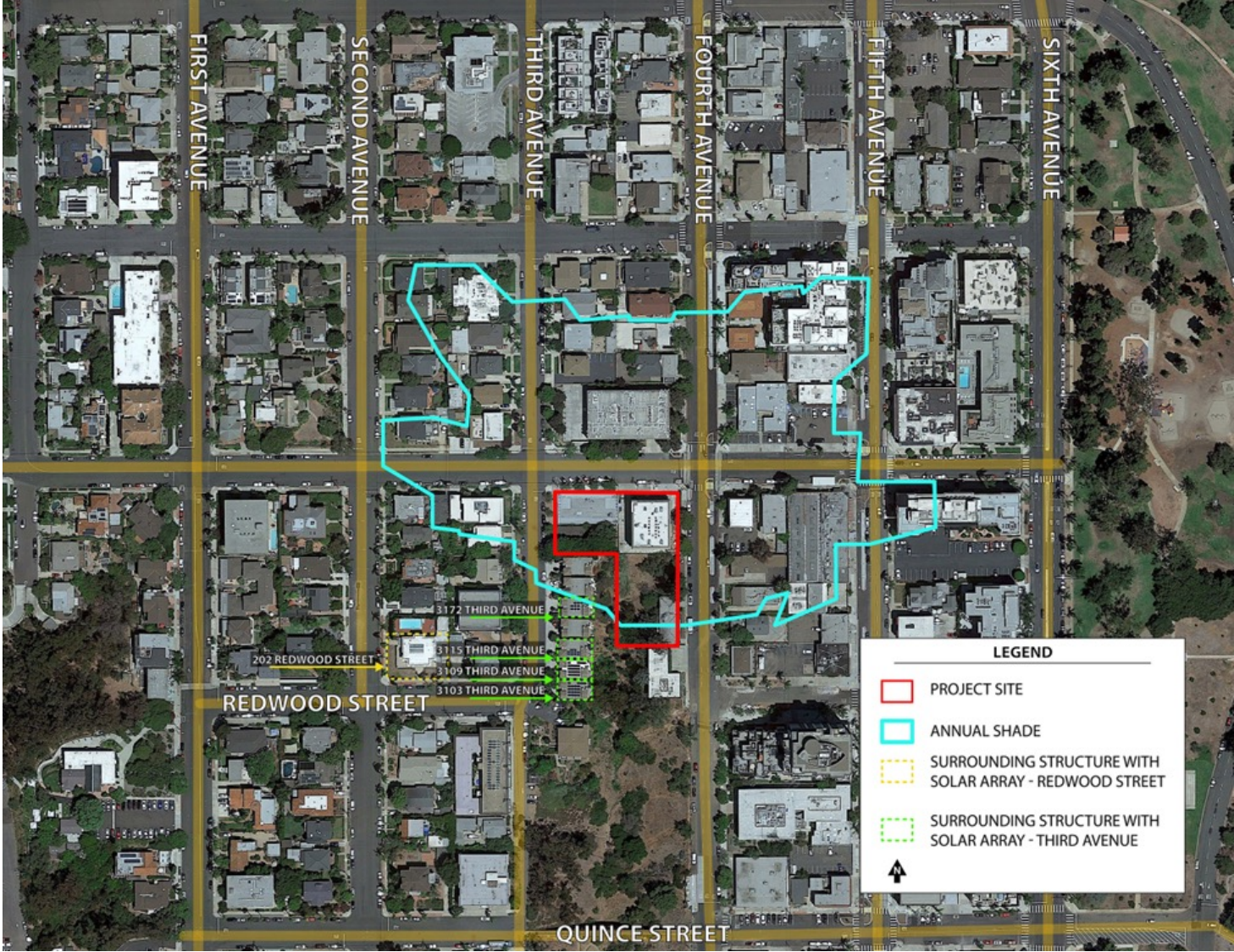
- (1) Thick Cornice Added Along Entire North & West Elevations; (2) Transom Windows Removed/In-Filled Along North & West Elevations; (3) Storefronts/Entries Removed & Infilled, 8 Arched Windows Added Along North Elevation;  
(4) Storefront/Entry Removed/Infilled Along Northwest Elevation

Present  
Appearance  
(2023)

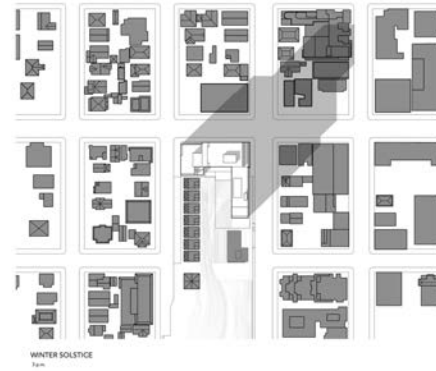
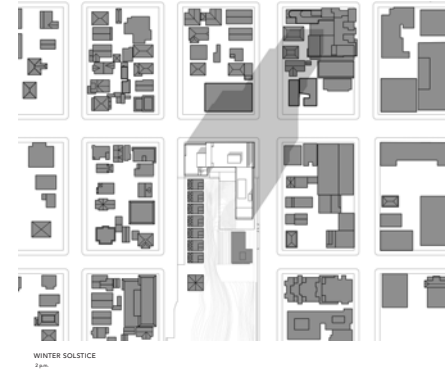
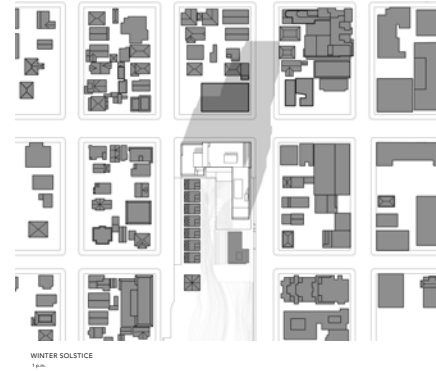
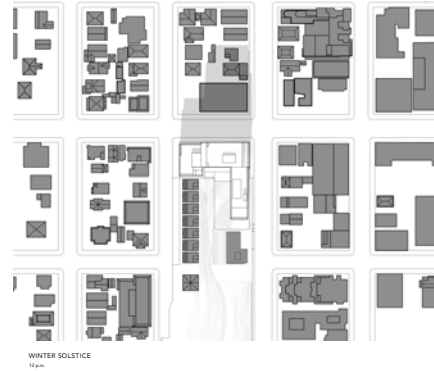
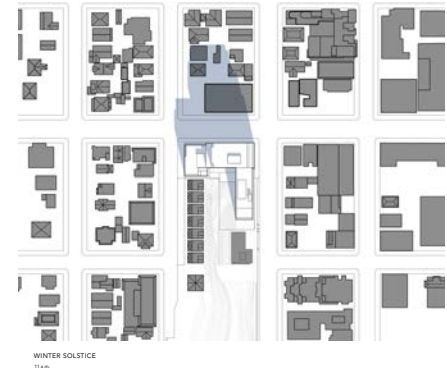
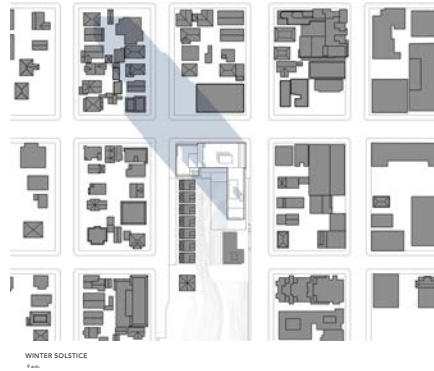




# Shade/Shadow

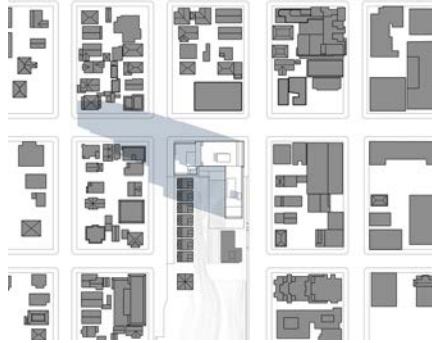


# Shade/Shadow *Winter Solstice*



# Shade/Shadow

## *Fall/Spring Equinox*



FALL/SPRING EQUINOX  
8 a.m.



FALL/SPRING EQUINOX  
11 a.m.



FALL/SPRING EQUINOX  
2 p.m.



FALL/SPRING EQUINOX  
8 a.m.



FALL/SPRING EQUINOX  
11 a.m.



FALL/SPRING EQUINOX  
2 p.m.



FALL/SPRING EQUINOX  
8 a.m.



FALL/SPRING EQUINOX  
11 a.m.



FALL/SPRING EQUINOX  
2 p.m.



# Shade/Shadow

## Summer Solstice



SUMMER SOLSTICE  
12:00



SUMMER SOLSTICE  
12:00



SUMMER SOLSTICE  
12:00



SUMMER SOLSTICE  
12:00



SUMMER SOLSTICE  
12:00



SUMMER SOLSTICE  
12:00



SUMMER SOLSTICE  
12:00



SUMMER SOLSTICE  
12:00



SUMMER SOLSTICE  
12:00

# Off-site Disturbance

