

Utilities Projects

CITY OF SAN DIEGO FACILITIES FINANCING PROGRAM

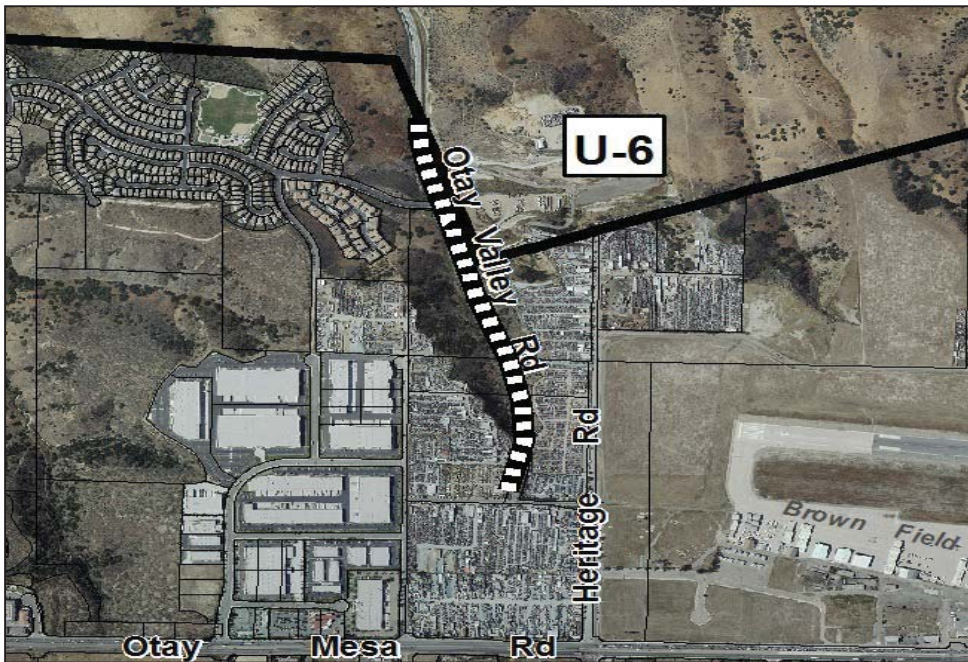
TITLE: WATER SUPPLY LINE IN OTAY VALLEY ROAD

DEPARTMENT: ENGINEERING & CAPITAL PROJECTS
WBS, CIP, or JO #: 40-930.0

PROJECT: OM U-6
COUNCIL DISTRICT: 8
COMMUNITY PLAN: OM

SOURCE	FUNDING:	EXPENDED	CONT APPROP	FY 2014	FY 2015	FY 2016	FY 2017	FY 2018
FBA-OM								
DIF-OM								
FBA-OM(w)								
FBA-OM(e)								
PDIF (w)								
PDIF (e)								
DEV/SUBD	\$775,000							
OTHER								
TOTAL	\$775,000	\$0	\$0	\$0	\$0	\$0	\$0	\$0

SOURCE	FY 2019	FY 2020	FY 2021	FY 2022	FY 2023	FY 2024	FY 2025	FY 2026
FBA-OM								
DIF-OM								
FBA-OM(w)								
FBA-OM(e)								
PDIF (w)								
PDIF (e)							\$775,000	
DEV/SUBD								
OTHER								
TOTAL	\$0	\$0	\$0	\$0	\$0	\$0	\$775,000	\$0



CONTACT:

TELEPHONE:

EMAIL:

CITY OF SAN DIEGO FACILITIES FINANCING PROGRAM

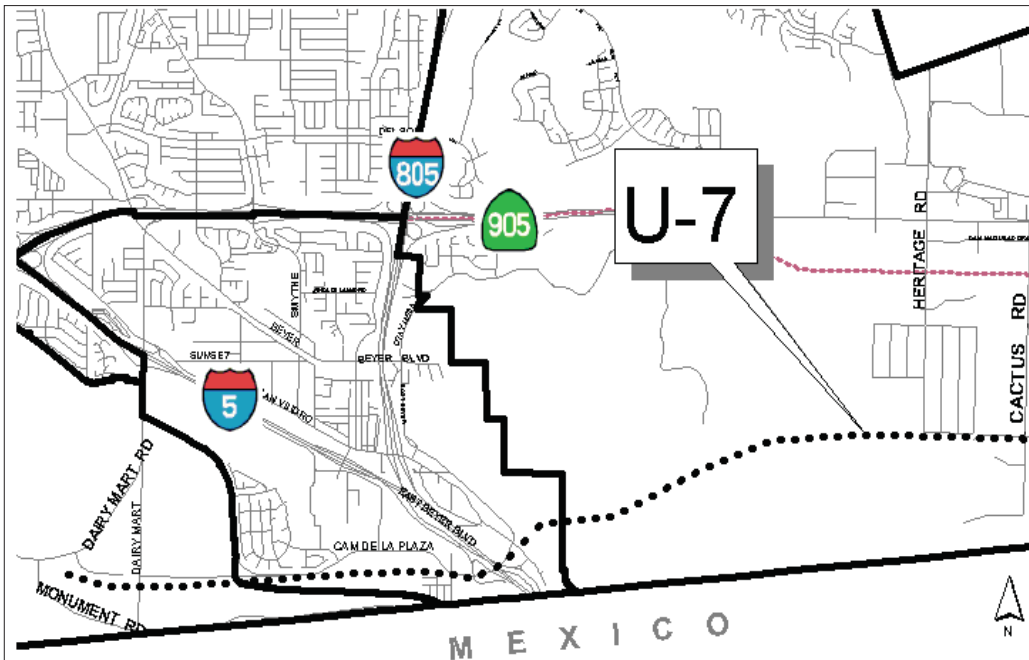
TITLE: OTAY MESA TRUNK SEWER - PHASE II

DEPARTMENT: ENGINEERING & CAPITAL PROJECTS
WBS, CIP, or JO #: 40-930.0

PROJECT: OM U-7
COUNCIL DISTRICT: 8
COMMUNITY PLAN: OM

SOURCE	FUNDING:	EXPENDED	CONT APPROP	FY 2014	FY 2015	FY 2016	FY 2017	FY 2018
FBA-OM								
DIF-OM								
FBA-OM(w)								
FBA-OM(e)								
PDIF (w)								
PDIF (e)								
DEV/SUBD	\$30,140,460	\$30,140,460						
OTHER								
TOTAL	\$30,140,460	\$30,140,460	\$0	\$0	\$0	\$0	\$0	\$0

SOURCE	FY 2019	FY 2020	FY 2021	FY 2022	FY 2023	FY 2024	FY 2025	FY 2026
FBA-OM								
DIF-OM								
FBA-OM(w)								
FBA-OM(e)								
PDIF (w)								
PDIF (e)								
DEV/SUBD								
OTHER								
TOTAL	\$0	\$0	\$0	\$0	\$0	\$0	\$0	\$0



CONTACT:

TELEPHONE:

EMAIL:

CITY OF SAN DIEGO
FACILITIES FINANCING PROGRAM

TITLE: OTAY MESA TRUNK SEWER - PHASE II

DEPARTMENT: ENGINEERING & CAPITAL PROJECTS
CIP or JO #: 40-930.0

PROJECT: OM U-7
COUNCIL DISTRICT: 8
COMMUNITY PLAN: OM

DESCRIPTION:

CONSTRUCT AN OUTFALL SEWER FROM CACTUS ROAD TO FUTURE "SOUTH BAY" ADVANCED TREATMENT PLANT LOCATED NEAR DAIRY MART ROAD AND MONUMENT ROAD.

JUSTIFICATION:

THE PROJECT IS NEEDED TO COMPLETE THE FINAL PHASE OF SEWER FACILITIES IDENTIFIED IN THE OTAY MESA SEWER MASTER PLAN. CAPACITY IN THE EXISTING SEWER FACILITIES WILL BE REACHED AS BUILDOUT OF THE PREVIOUSLY APPROVED DEVELOPMENT PROJECTS OCCURS. IN ORDER TO ACCOMMODATE ADDITIONAL DEVELOPMENT, A PERMANENT TRUNK SEWER LINE WILL BE REQUIRED TO SERVE THE OTAY MESA COMMUNITY.

FUNDING ISSUES:

NOTES:

INCLUDED FOR INFORMATIONAL PURPOSES ONLY.

SCHEDULE:

FUTURE PHASES WILL BE COMPLETED AS THE COMMUNITY DEVELOPS

CONTACT:

TELEPHONE:

EMAIL: