



Mobility Workshop
January 8, 2016
Existing Conditions

Presentation Outline

- Brief Overview
- Mobility Planning Process
- Mobility Exercise
- Summary of Existing Conditions Analysis
- Mobility Toolbox
- Mobility Discussion

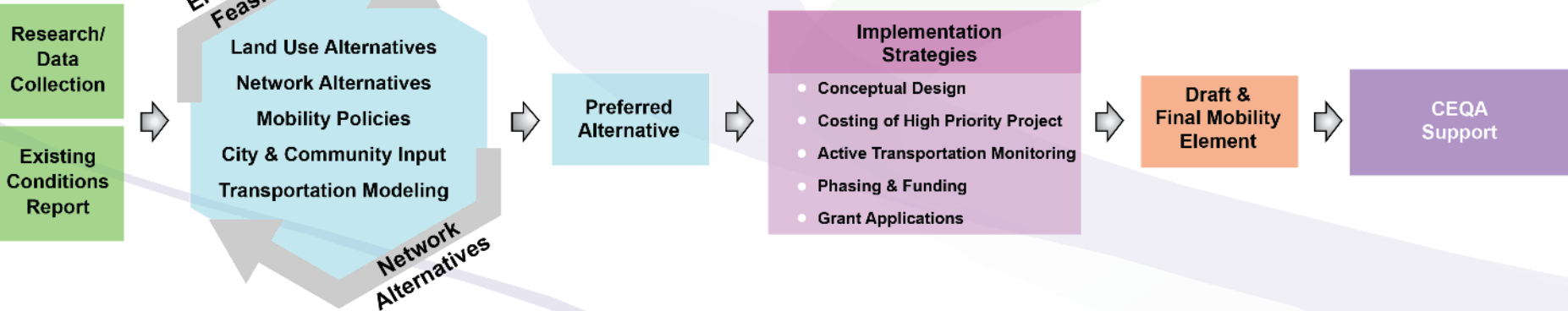


Mobility Objectives

- Promote, design and implement a transportation system that emphasizes walking and biking for short trips
- Improve connectivity between land uses and improve non-motorized connections to transit stations
- Maximize convenience, efficiency and quality for mass transit users
- Improve safety and operations at existing freeway access and provide alternative access to I-805

Mobility Planning Process

City & Community Outreach and Participation

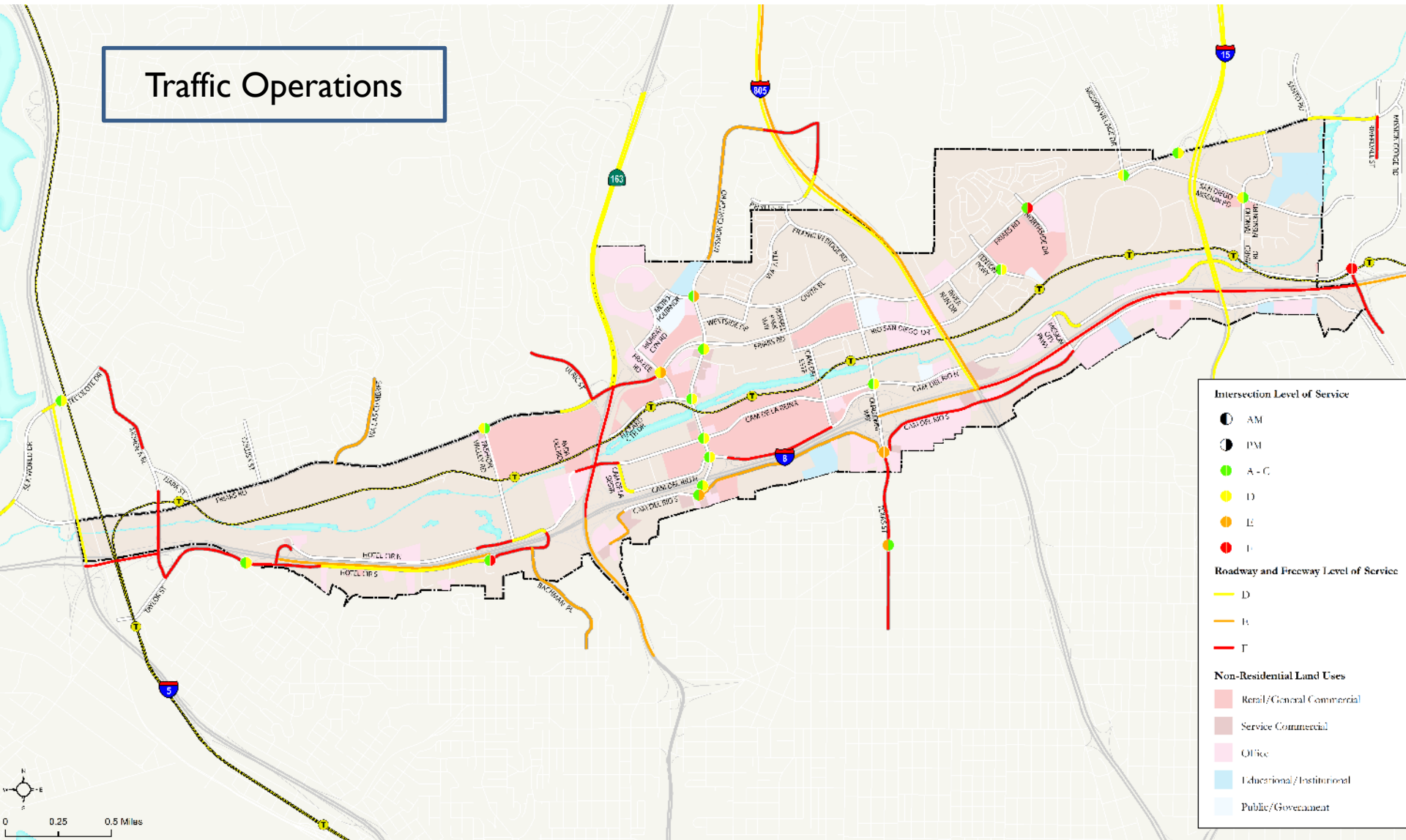


Project Management and Coordination

Pull out your pencils,
it's time for a
POP QUIZ!

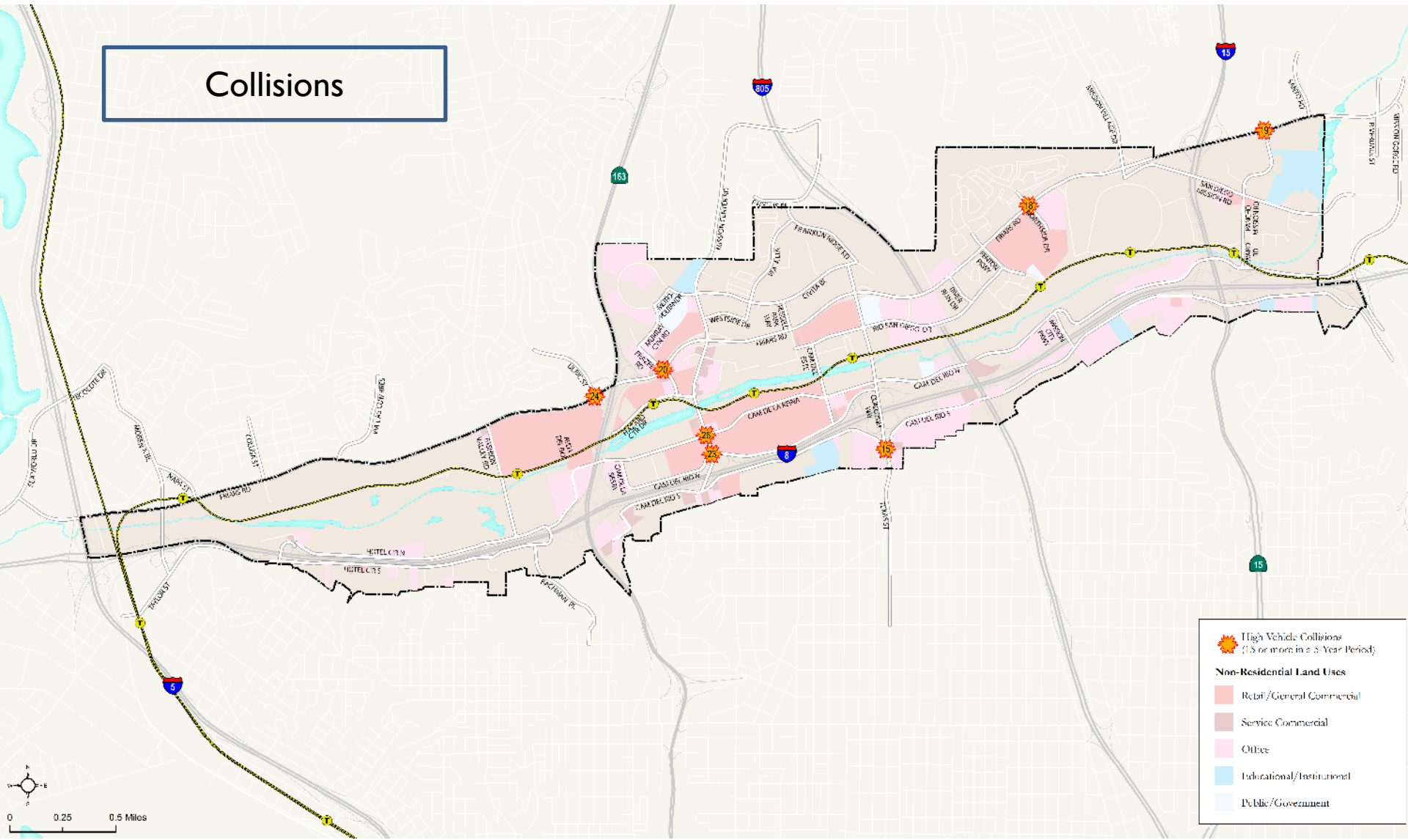
Street and Freeway

Traffic Operations

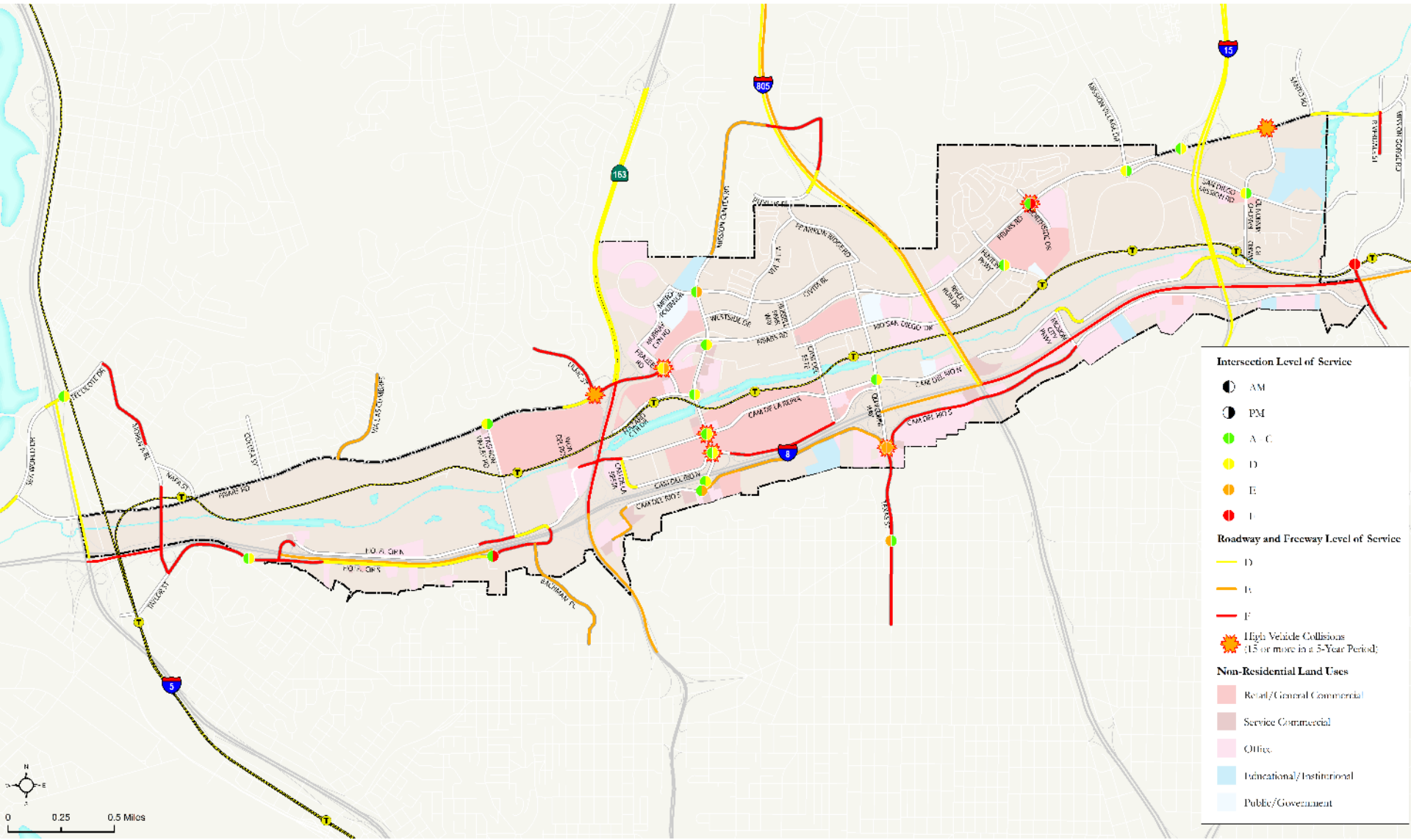


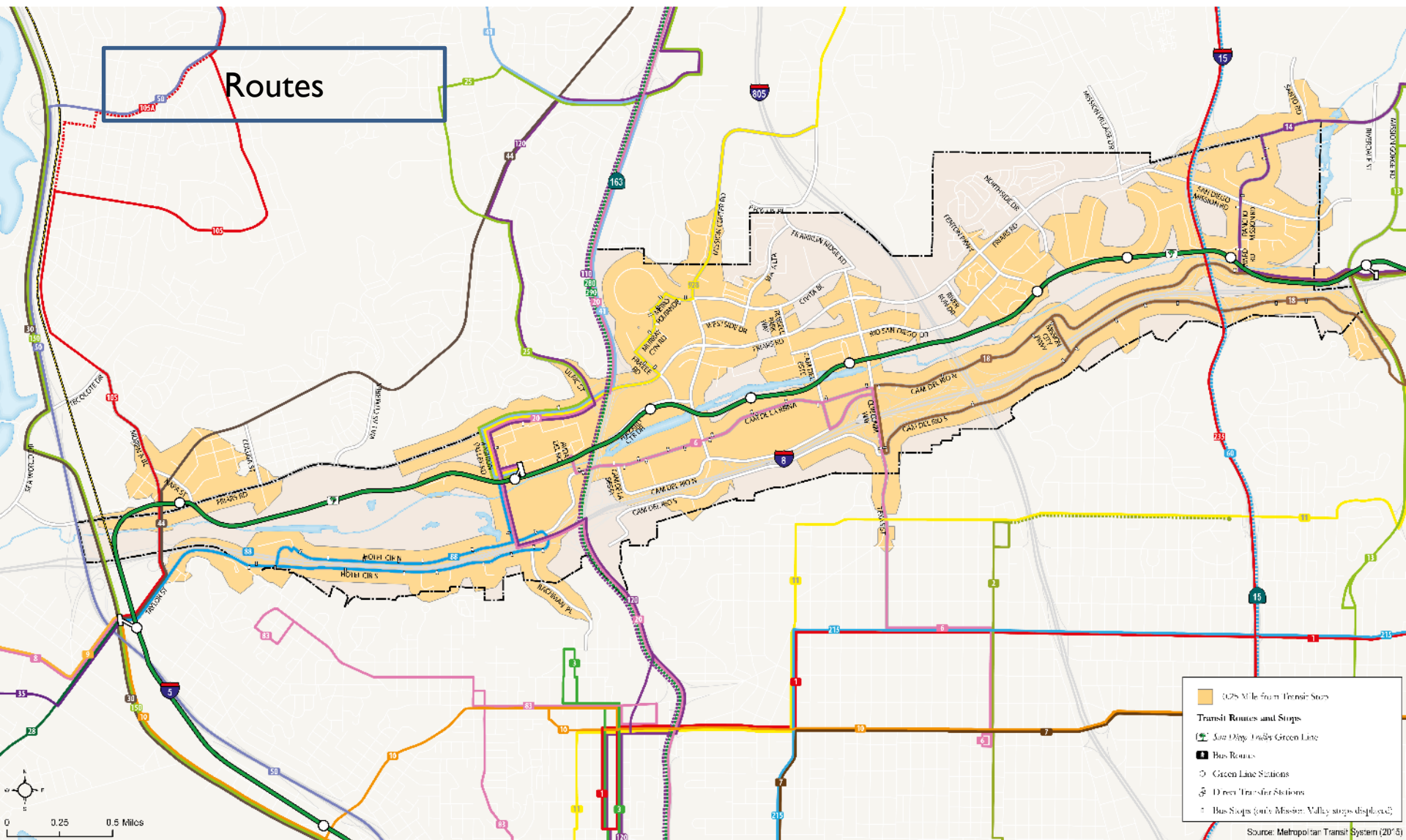
Street and Freeway

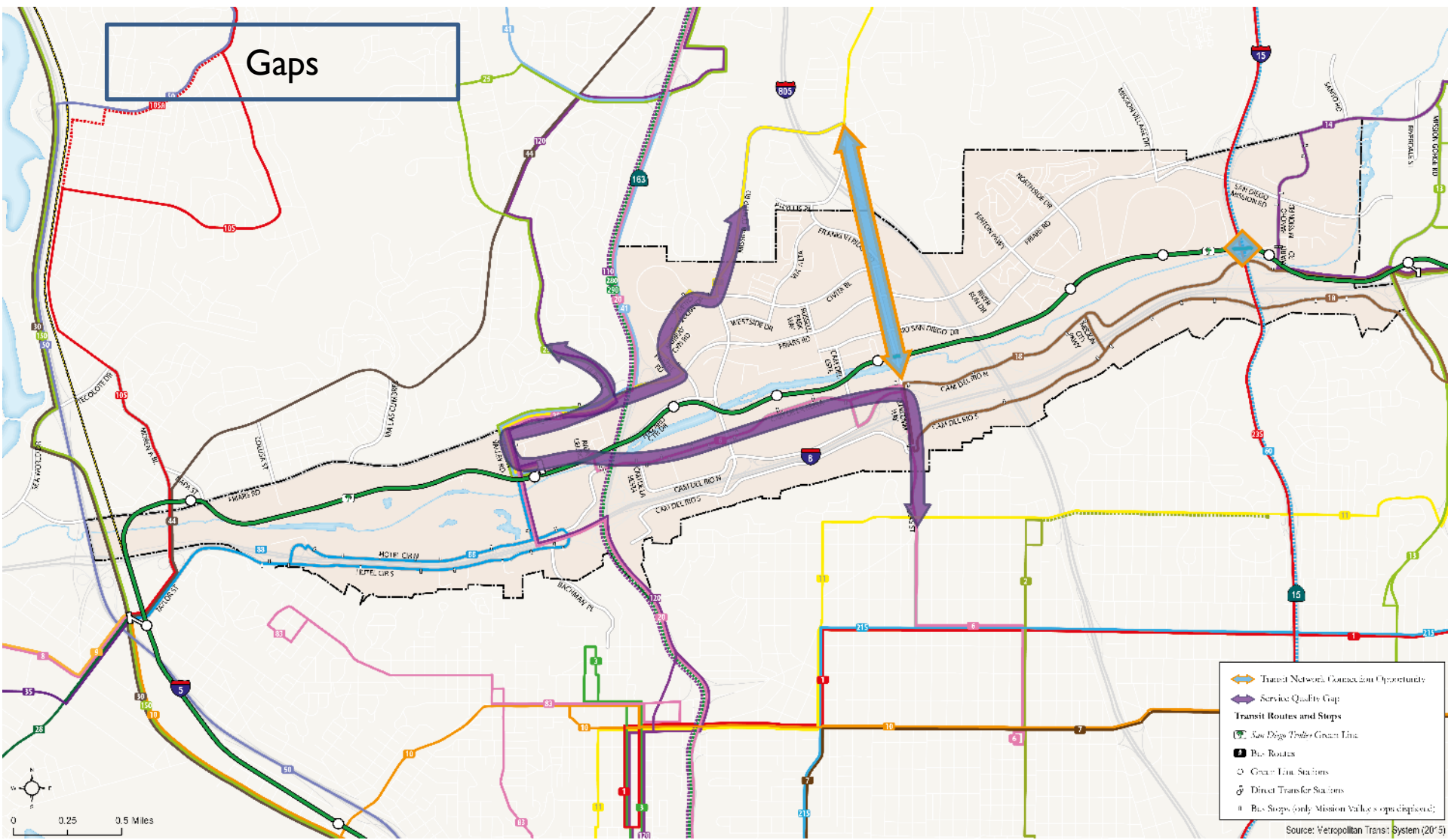
Collisions

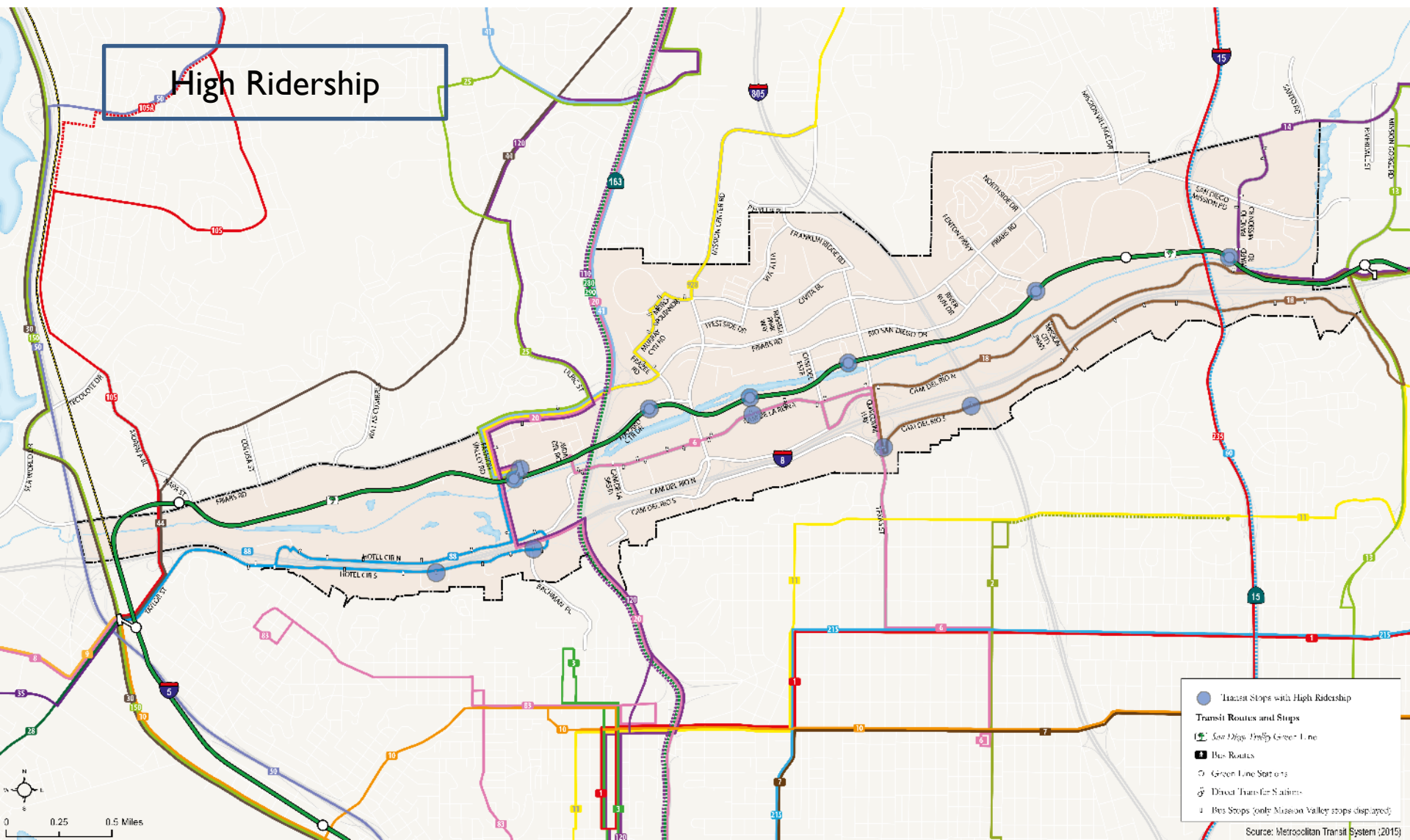


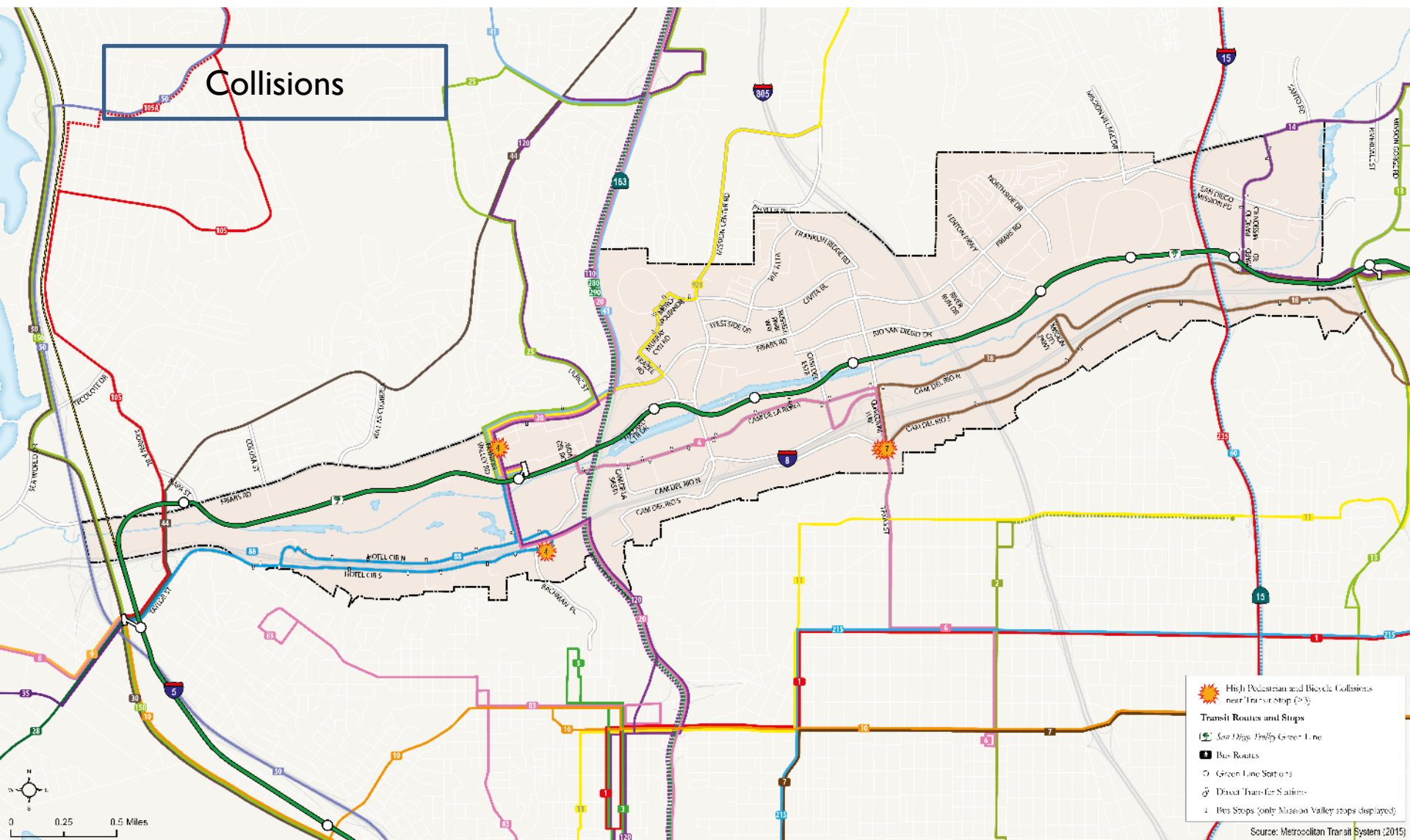
Street and Freeway



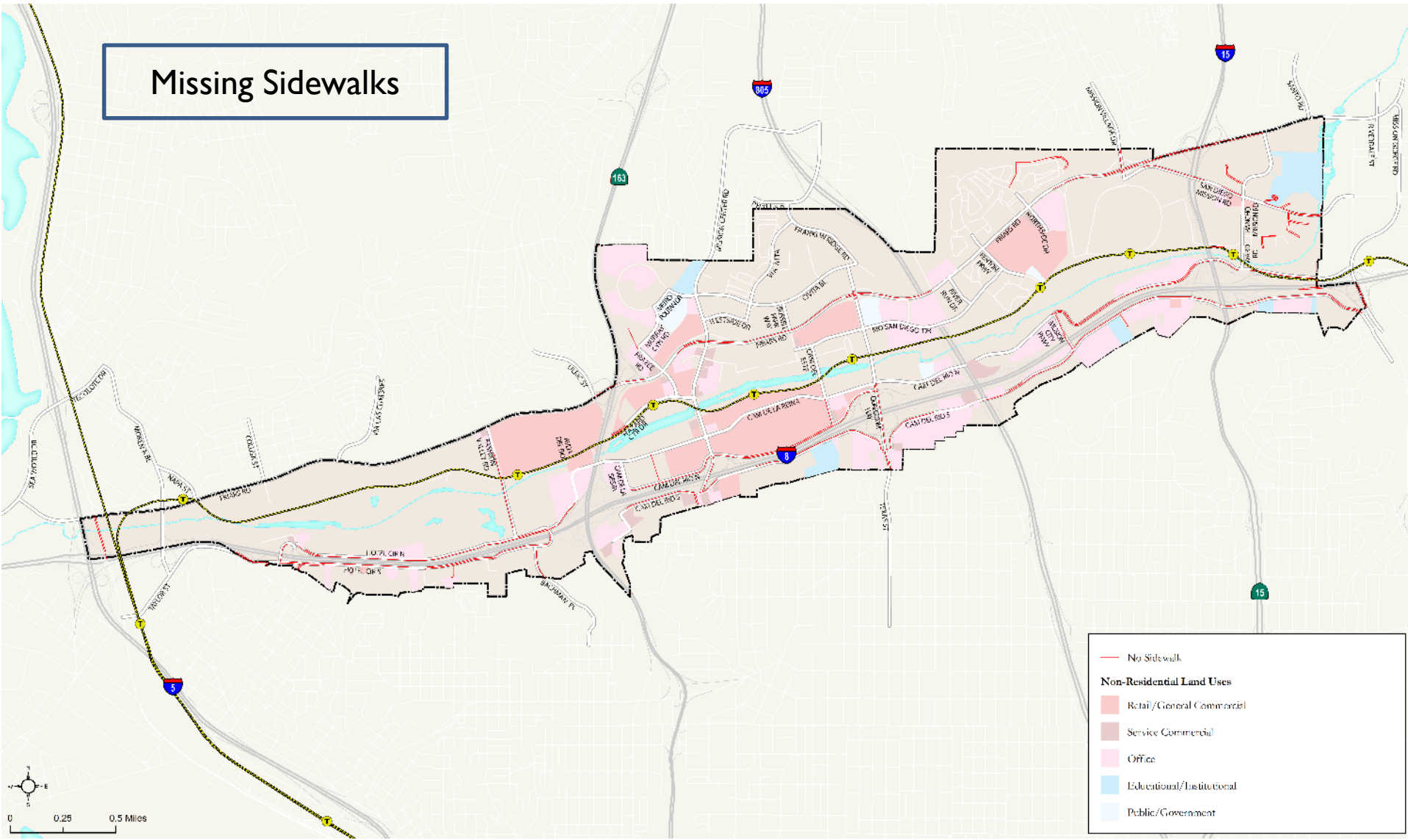




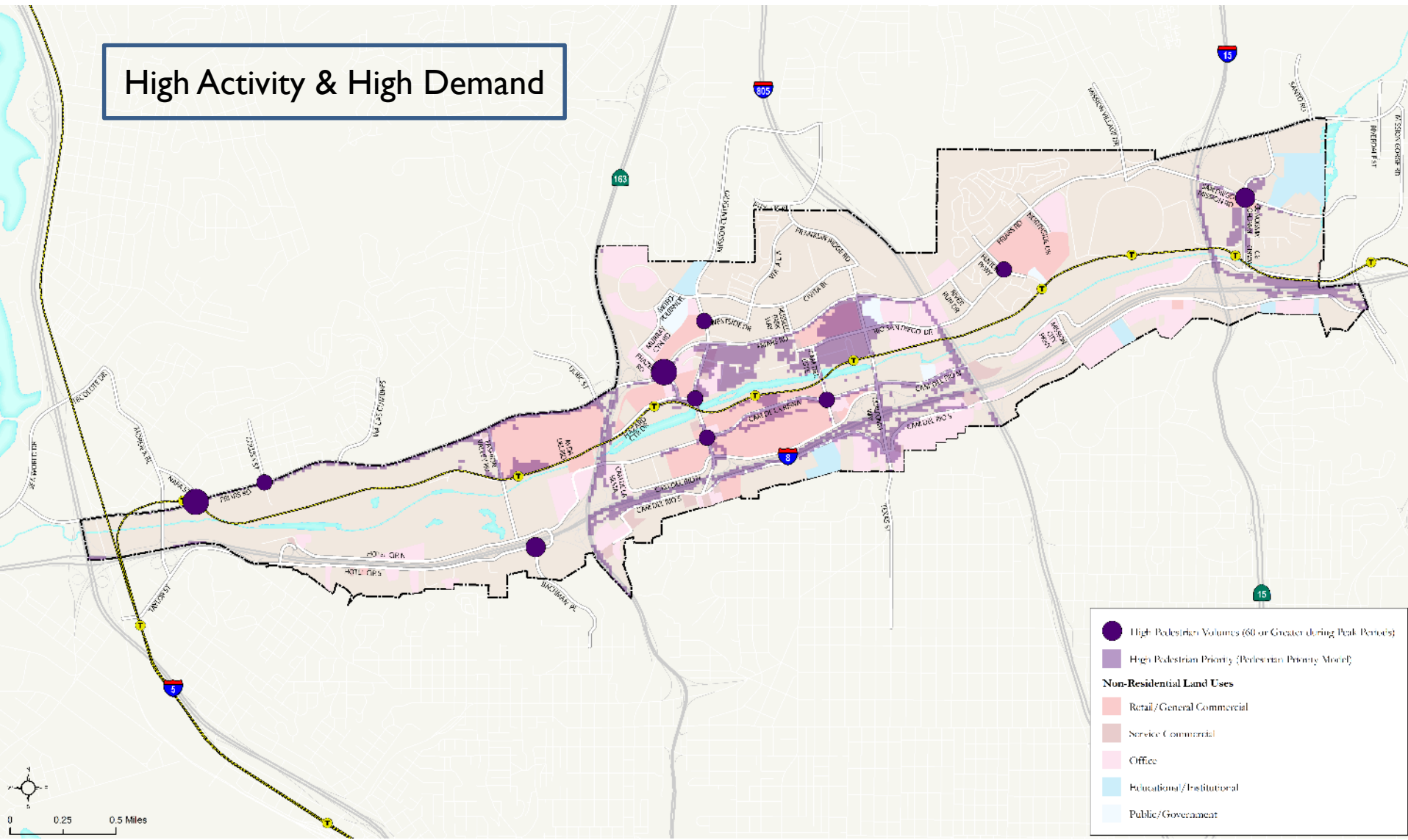




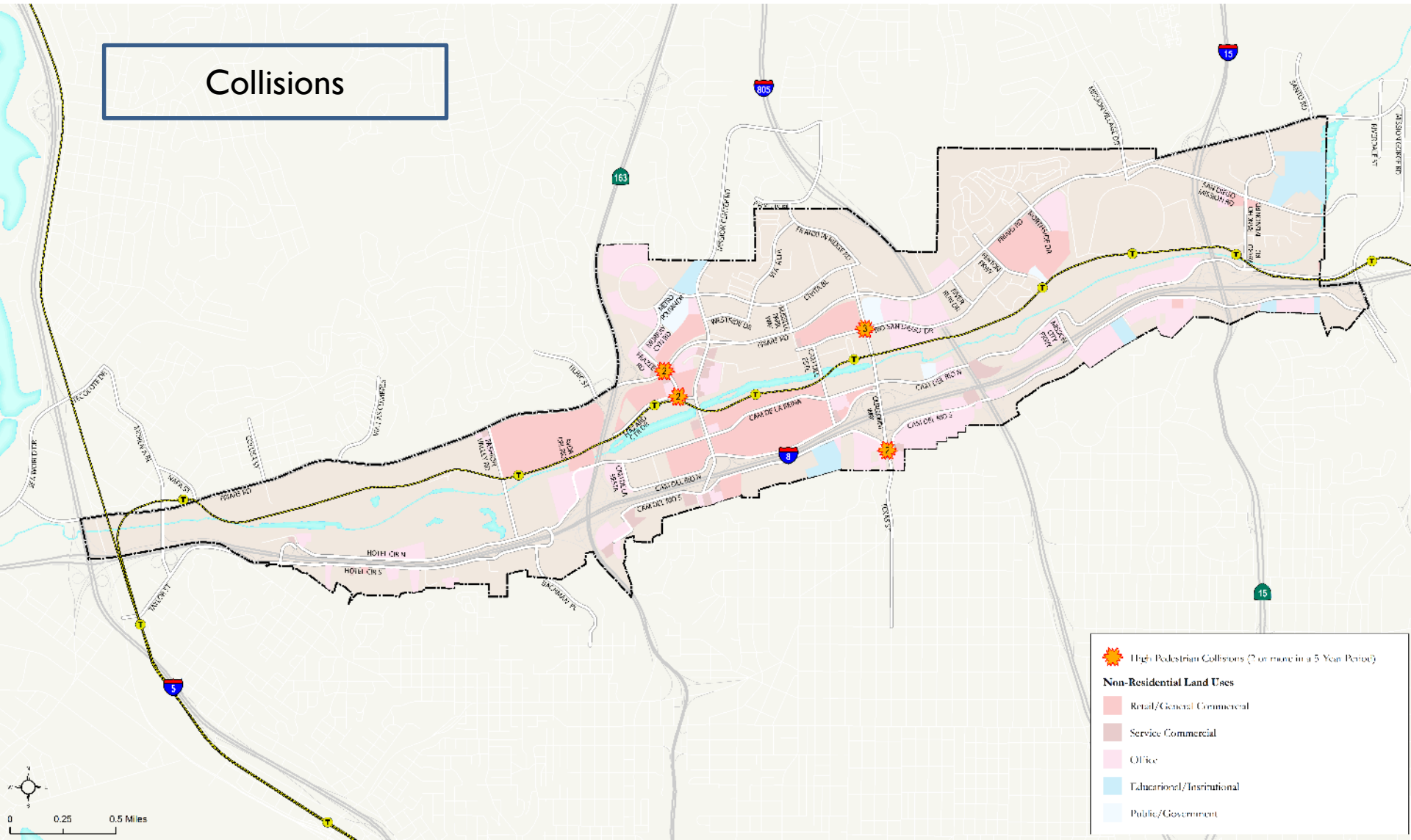
Missing Sidewalks

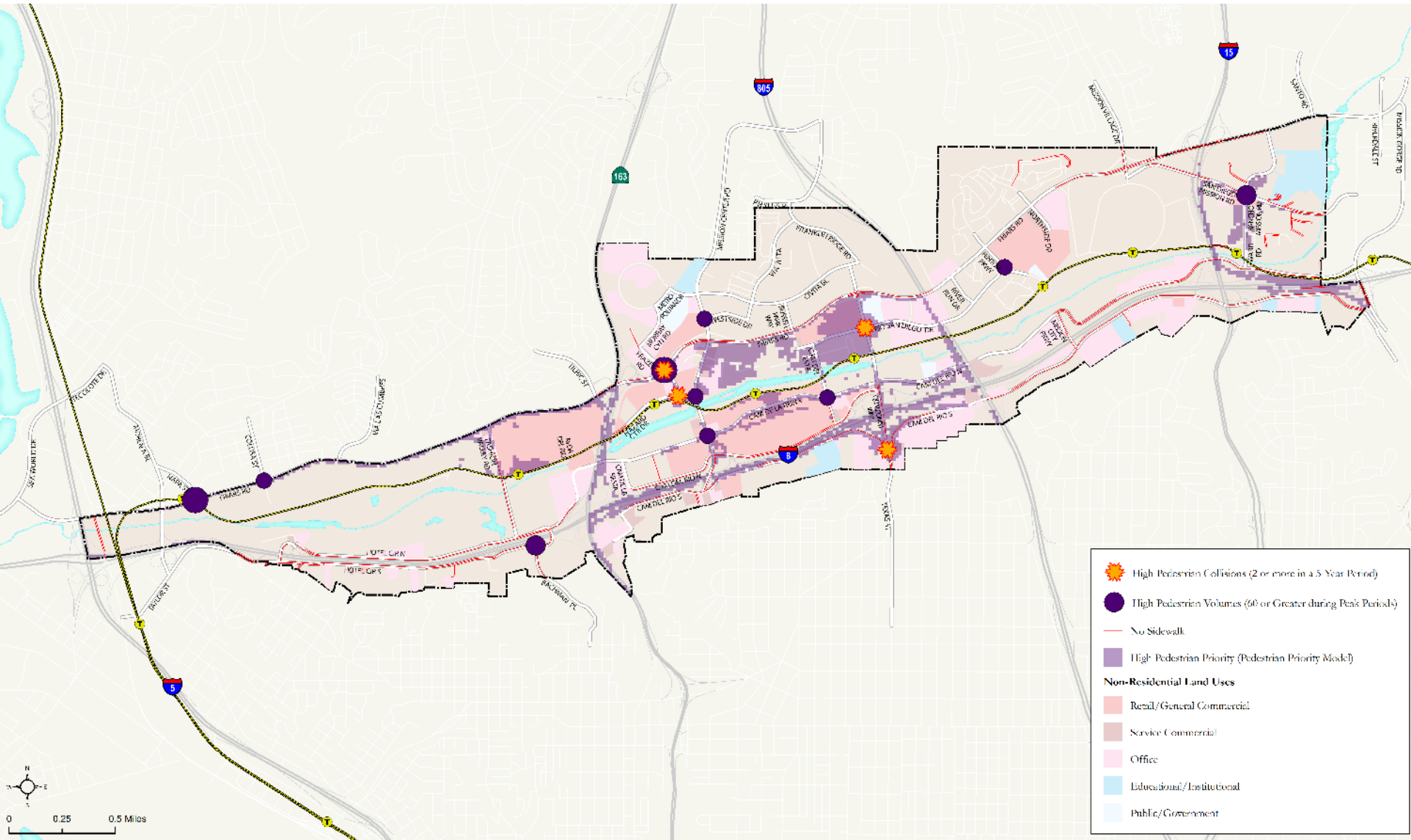


High Activity & High Demand

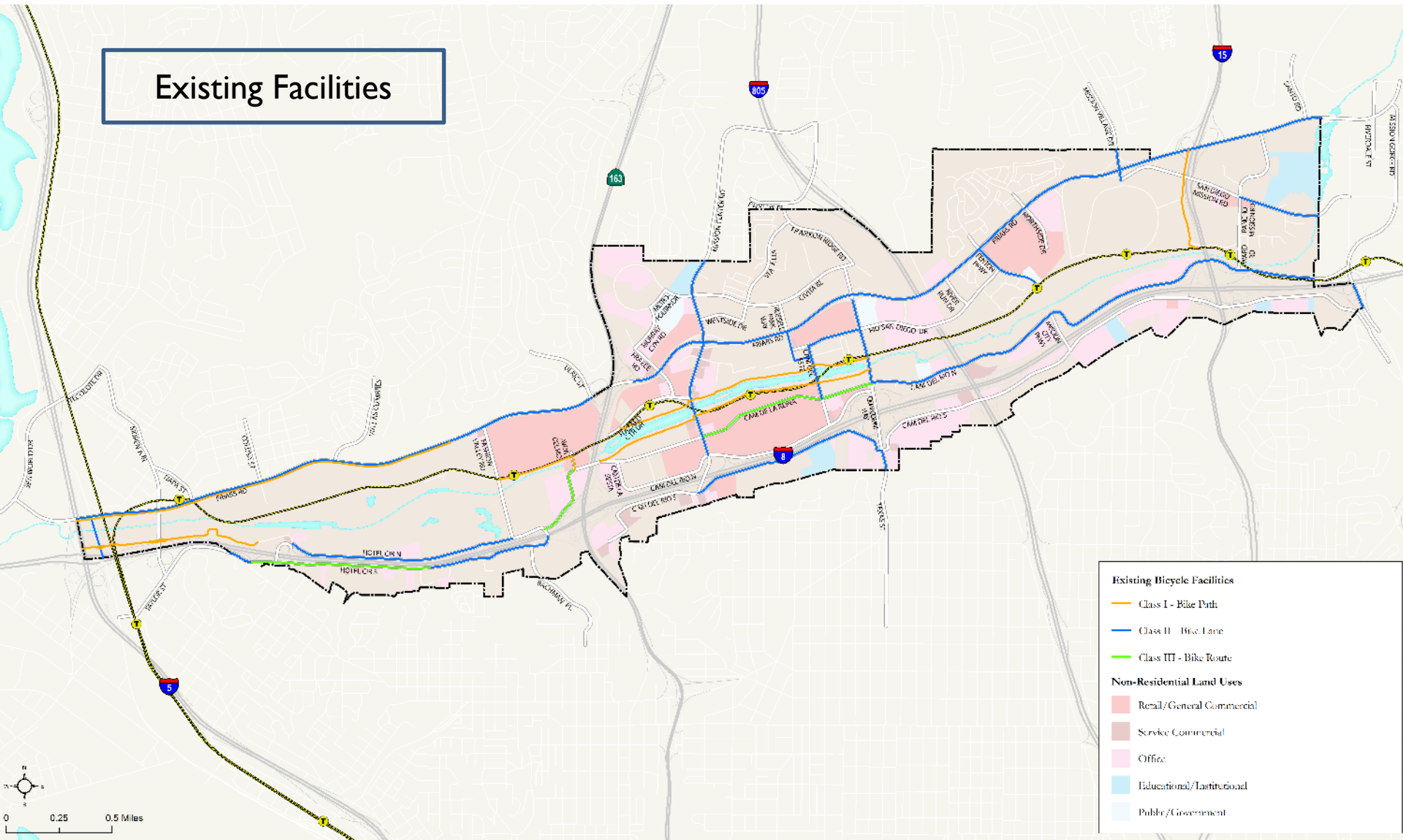


Collisions

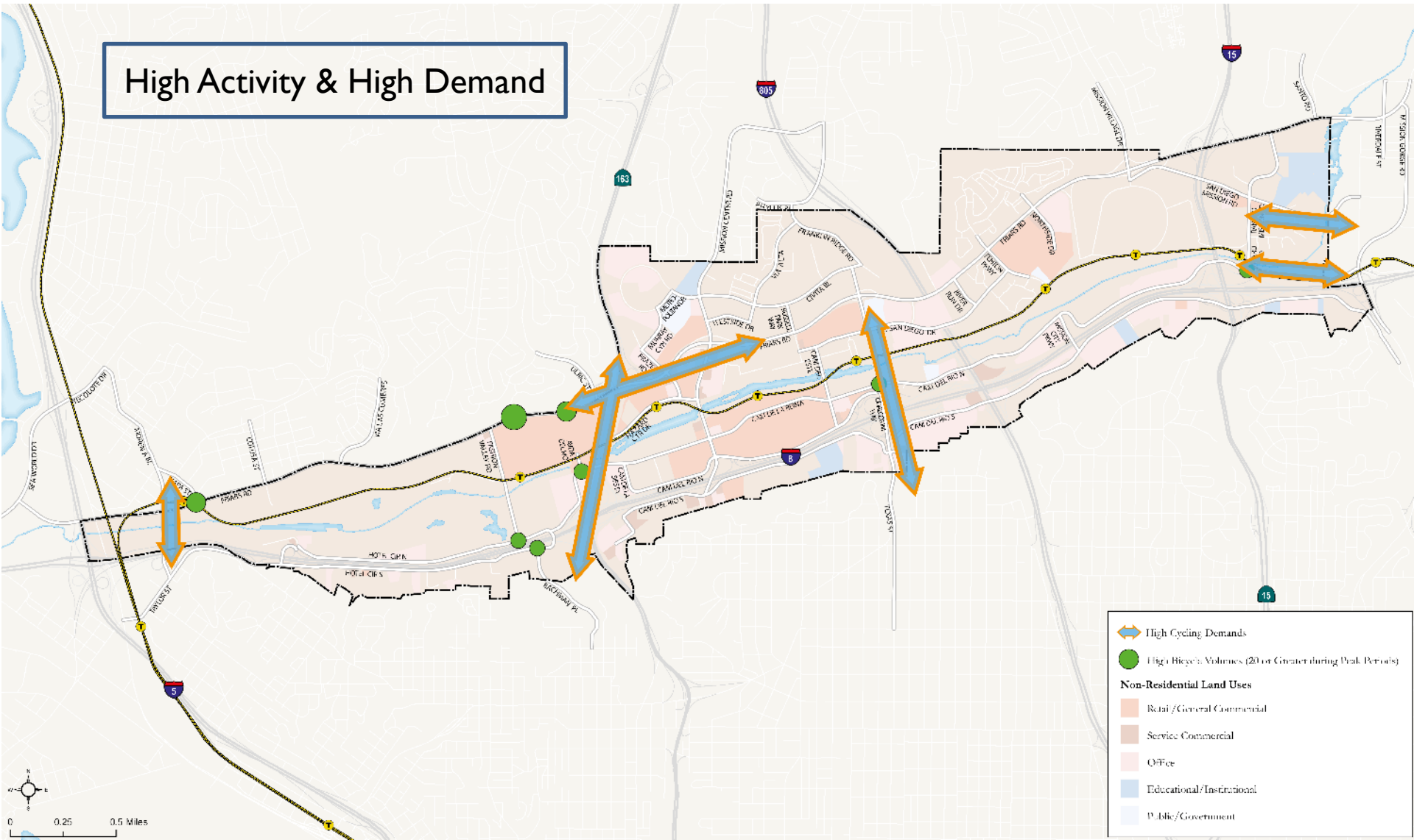




Existing Facilities

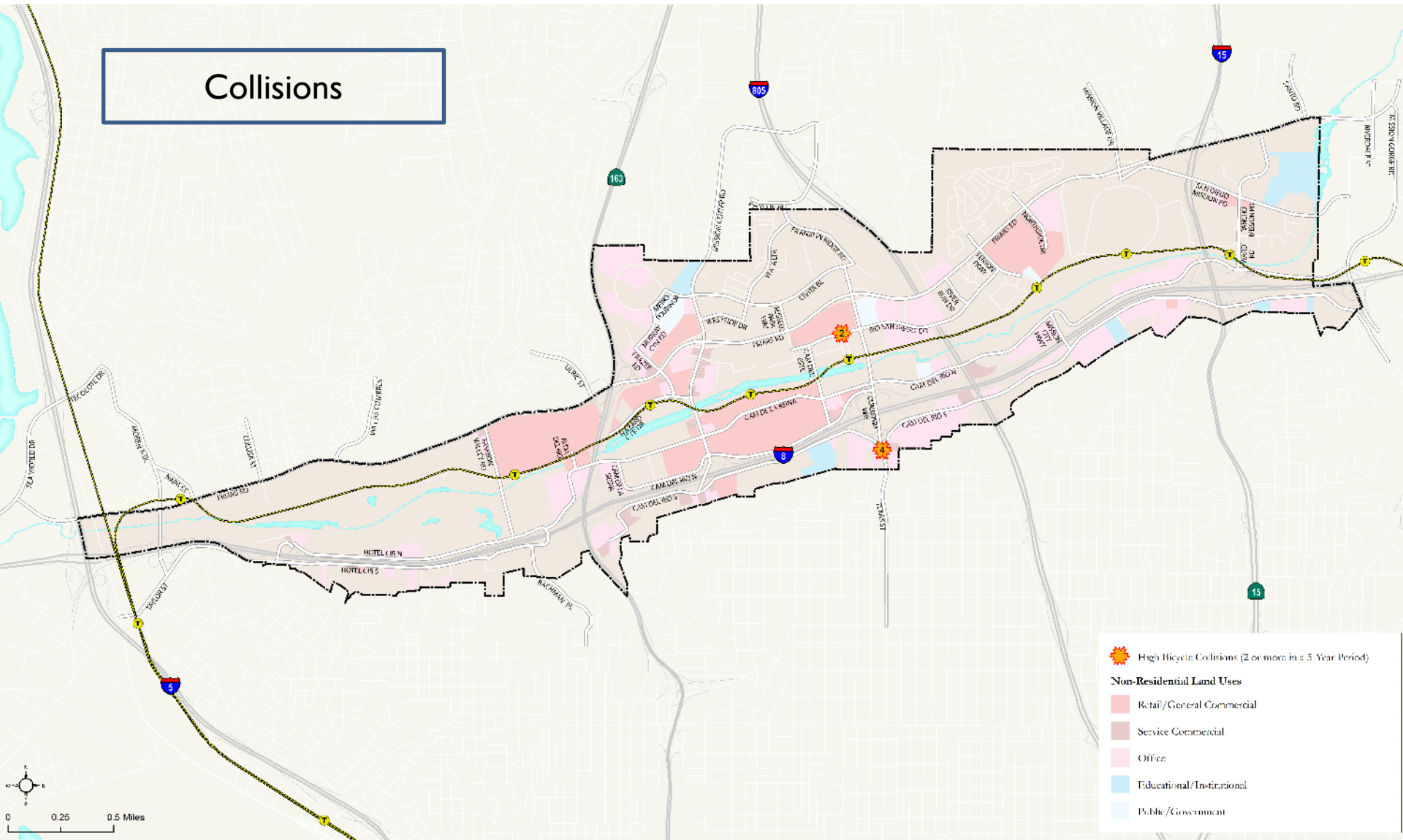


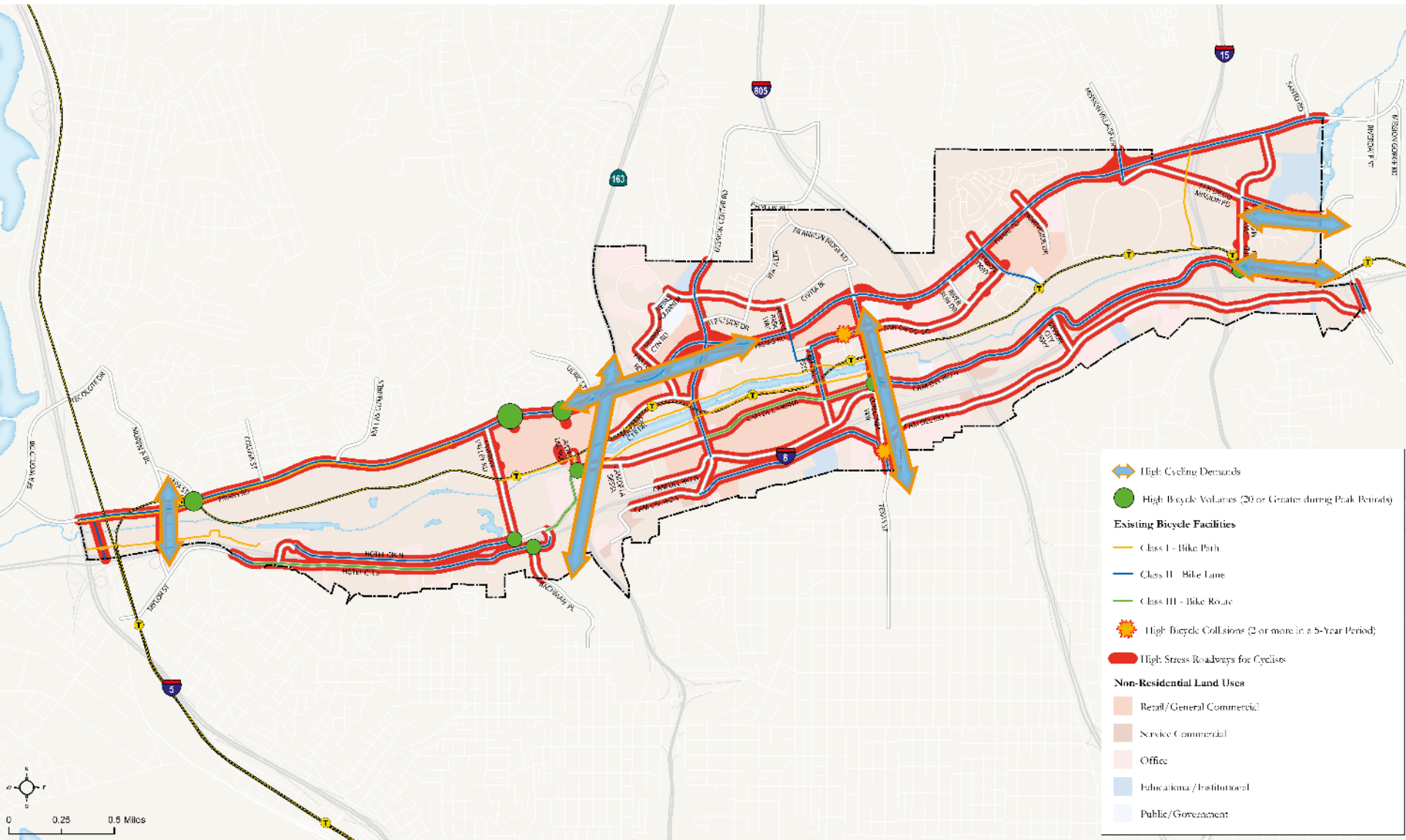
High Activity & High Demand





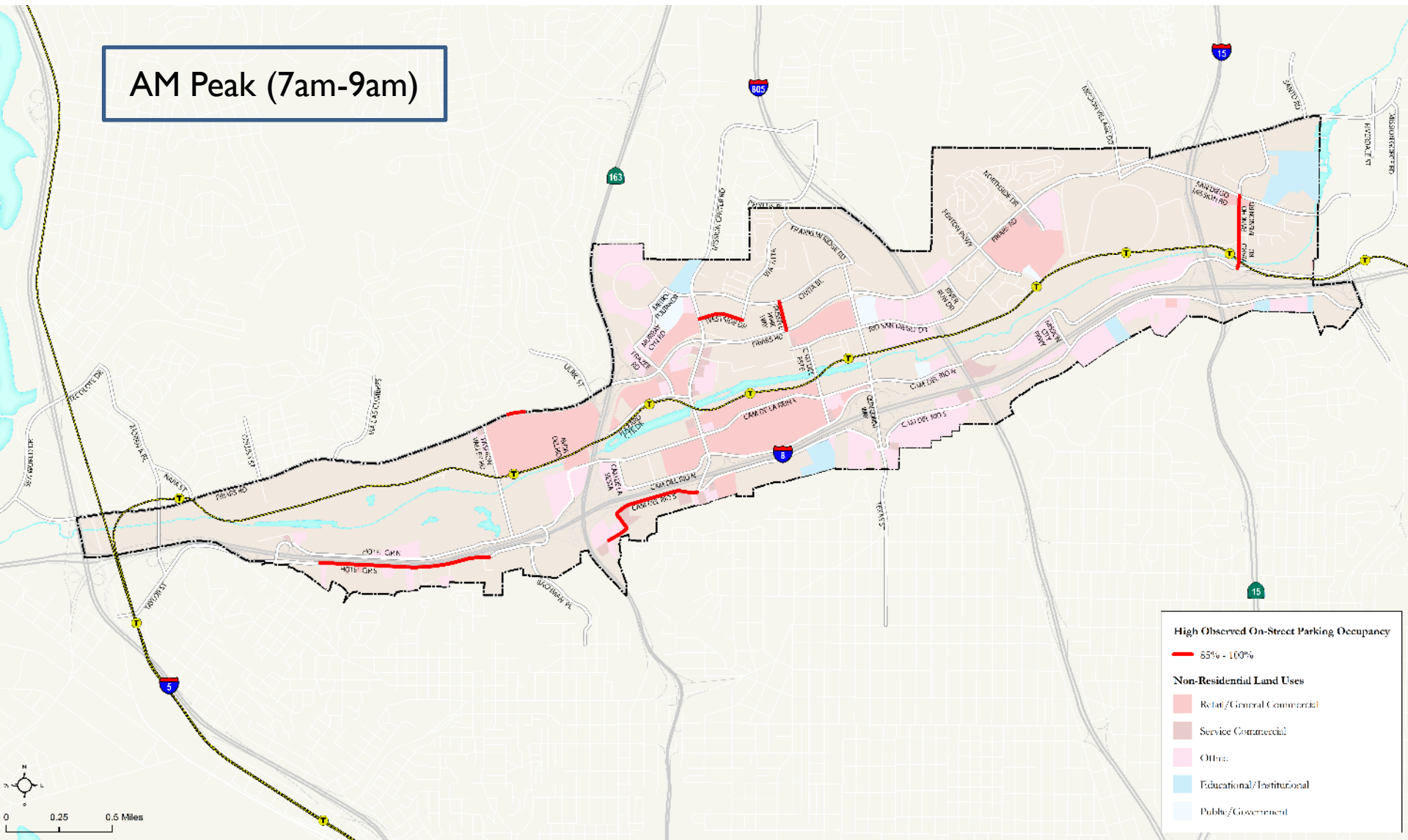
Collisions

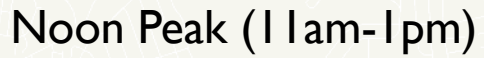




On-Street Parking

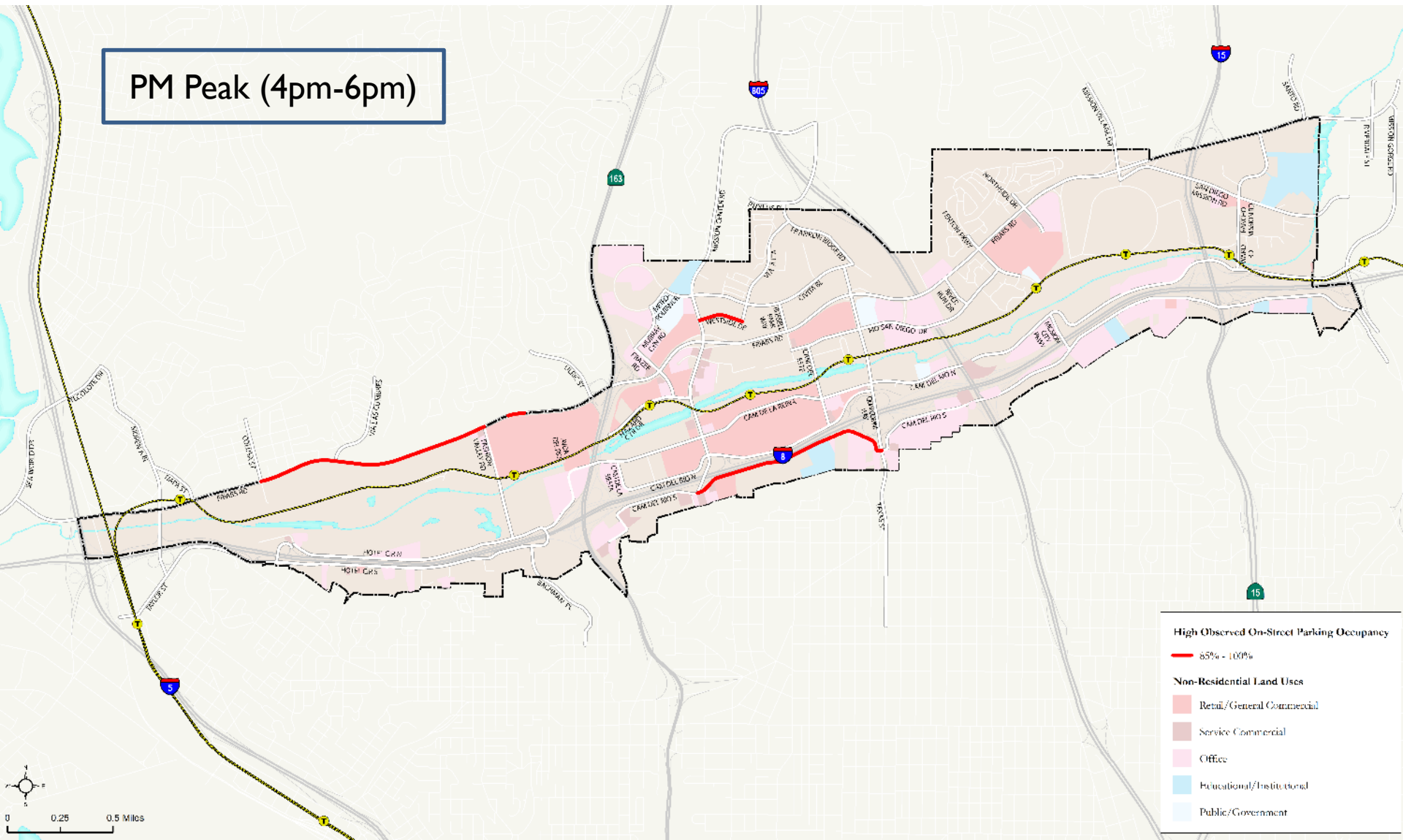
AM Peak (7am-9am)



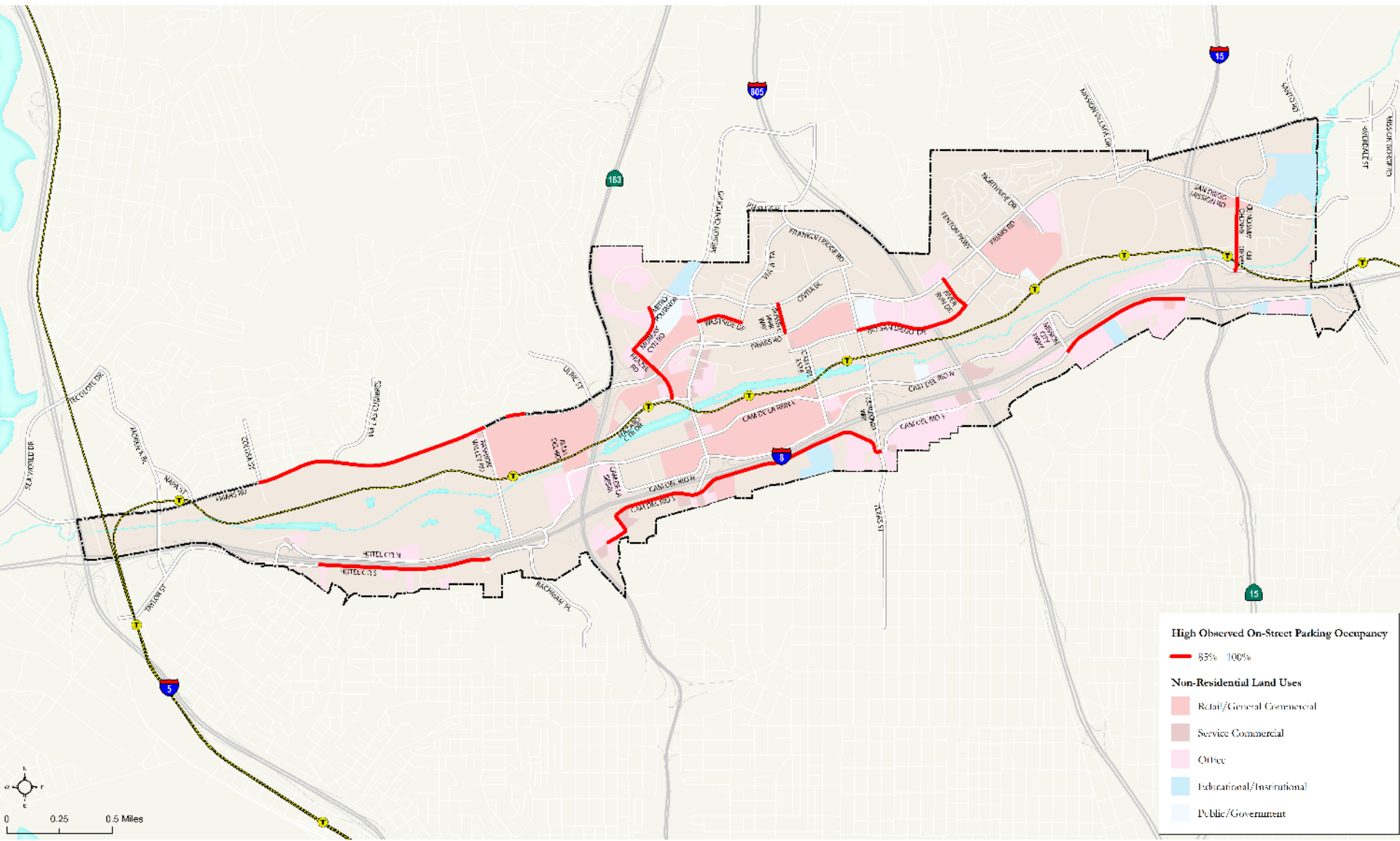


On-Street Parking

PM Peak (4pm-6pm)



On-Street Parking



Mobility Treatments for:



Drivers



Pedestrians



Bicycles



Transit Users

Strengthen the Street Grid



Downtown



Mission Valley

Mobility Toolbox – Auto

Widen Roads



Dedicated Turn Lanes



Mobility Toolbox – Auto

Improve Signal Coordination



Mobility Toolbox – Auto

Roundabout



Mobility Toolbox – Pedestrian

**Flashing Beacons &
High Visibility Crosswalks**



Mobility Toolbox – Pedestrian



**Pedestrian Hybrid
Beacon Crosswalk**

Mobility Toolbox – Pedestrian

Pedestrian Countdown



High Visibility Crosswalks



Mobility Toolbox – Pedestrian

Lead

Pedestrian Interval



Mobility Toolbox – Pedestrian

An aerial photograph of a city intersection. The intersection is marked with white lines and arrows. The sidewalks are paved with red brick. There are trees and bushes along the sidewalks. A red car and a white car are visible on the street. The text "Mobility Toolbox – Pedestrian" is overlaid in white at the top.

Curb Bulb-Outs

Mobility Toolbox – Pedestrian



Pedestrian Refuge

Mobility Toolbox – Bicycle



Bike Route

Mobility Toolbox – Bicycle



Bike Lane

Mobility Toolbox – Bicycle

**Buffered
Bike Lane**



Mobility Toolbox – Bicycle



Multi-Use Path

Raised Two-Way Cycle Track

Mobility Toolbox – Bicycle



Mobility Toolbox – Bicycle

Two-Way Cycle Track



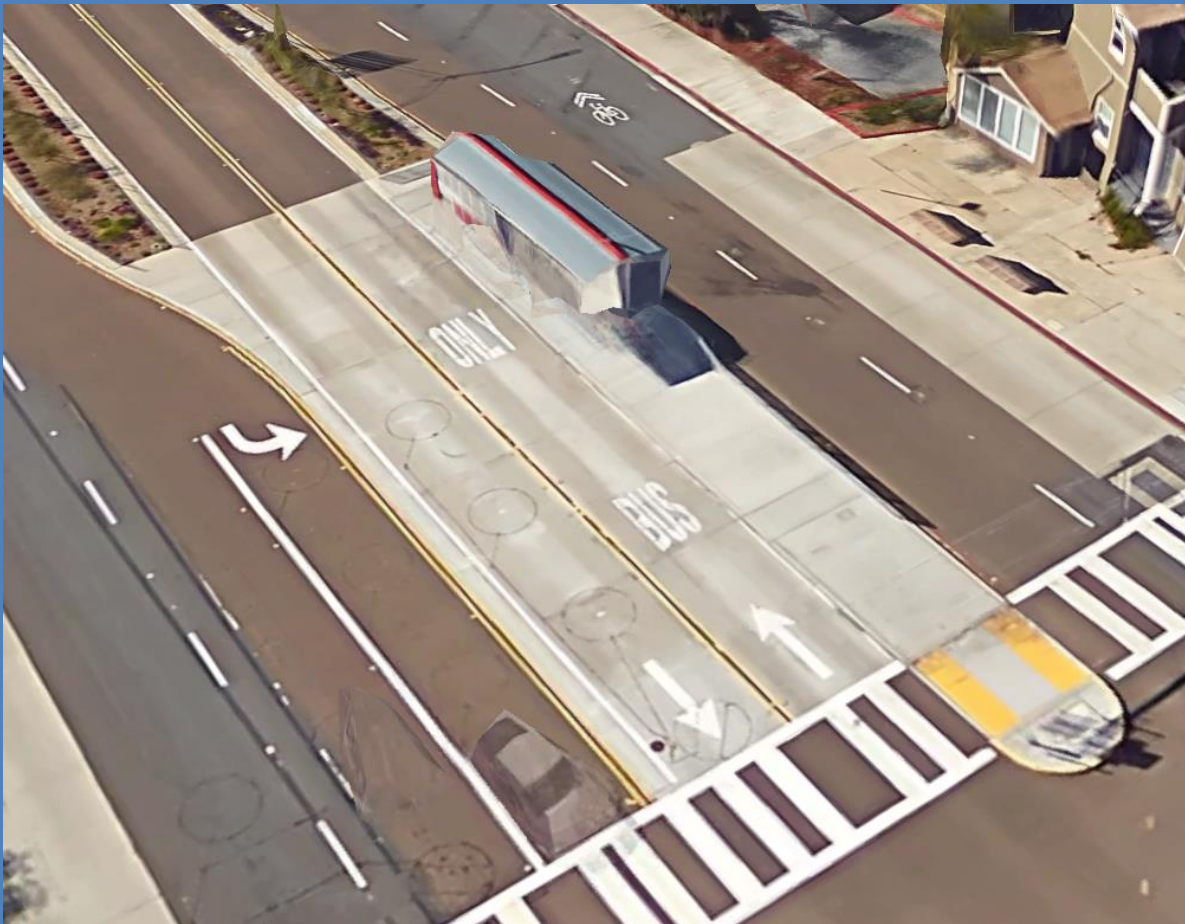
Mobility Toolbox – Bicycle

One-Way Cycle Track

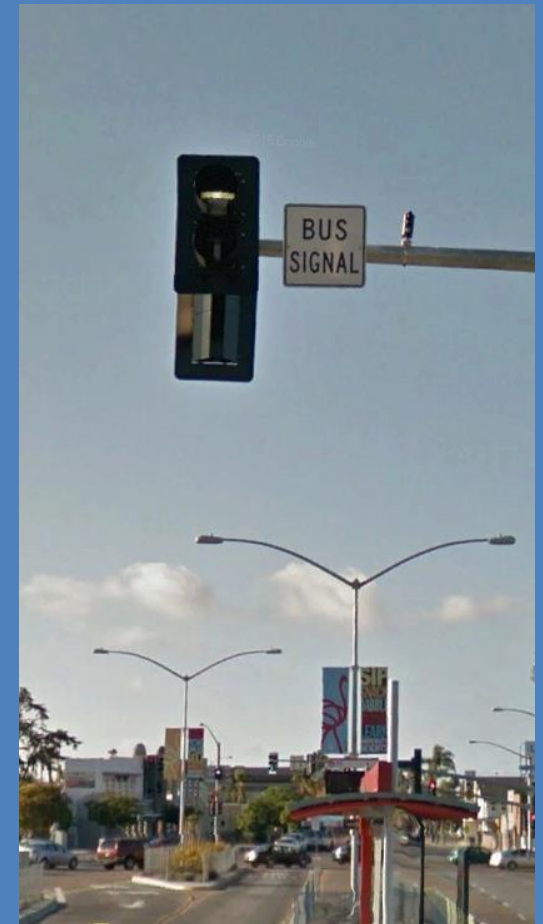


Mobility Toolbox – Transit

Dedicated Bus Lane



Bus Priority Signal



Mobility Toolbox – Transit



**Transit Station
Amenities**

Mobility Toolbox – Transit

Mobility Hub Concept

- | | | |
|--------------------------|----------------------------|-------------------------------------|
| 1 Bike parking | 5 Shared mobility services | 9 Package delivery |
| 2 Real-time transit info | 6 Smart intersection | 10 Pedestrian facilities |
| 3 Informational kiosk | 7 Electric vehicle charger | 11 Protected bikeway |
| 4 On-demand rideshare | 8 Smart parking | 12 Universal transportation account |
| | | 13 Mixed-use development |



Use the Toolbox Activity

Using the map on the back of
your quiz, please identify mobility
issues and possible solutions
from the toolbox

Thank you!

- Link will be sent to you following the meeting
- Comments are due to Nancy Graham by January 22

Tentative Plan for Next Meetings

- February Meeting
 - Land Use Issues and Opportunities
- March Meeting
 - Mobility Issues and Opportunities
- February or March
 - Design Professionals Workshop