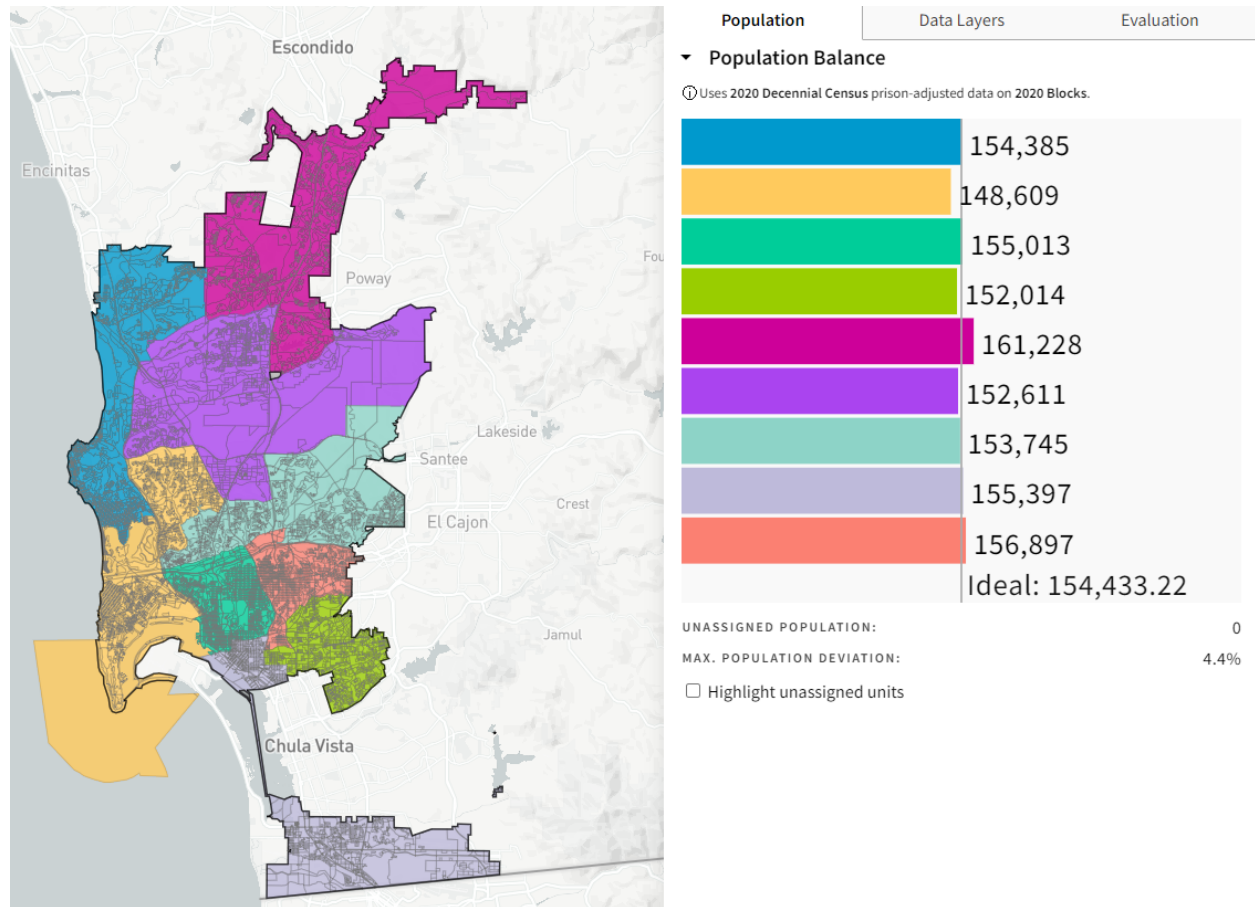


Map 87525 -- Exploring Cleaning up Pacific Beach and changes to East Elliot, Torrey Highlands, Torrey Hills and Kearny Mesa

Link to map:

<https://districtr.org/plan/87525>

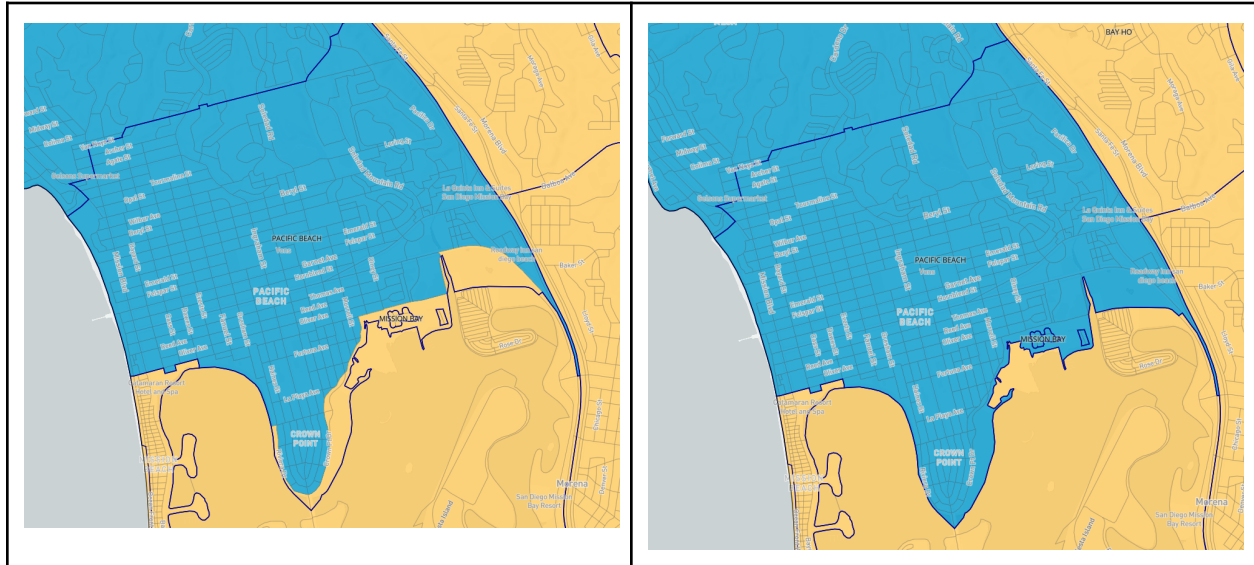


Methodology

This map is an adaptation map 87744 (the 'approved' map). It brings the Southern Pacific Beach boundaries out to the Neighborhood boundaries. It shifts East Elliot into District 7. It moves Torrey Highlands into District 5, Torrey Hills into District 1 and the Kearny Mesa neighborhood into District 6.

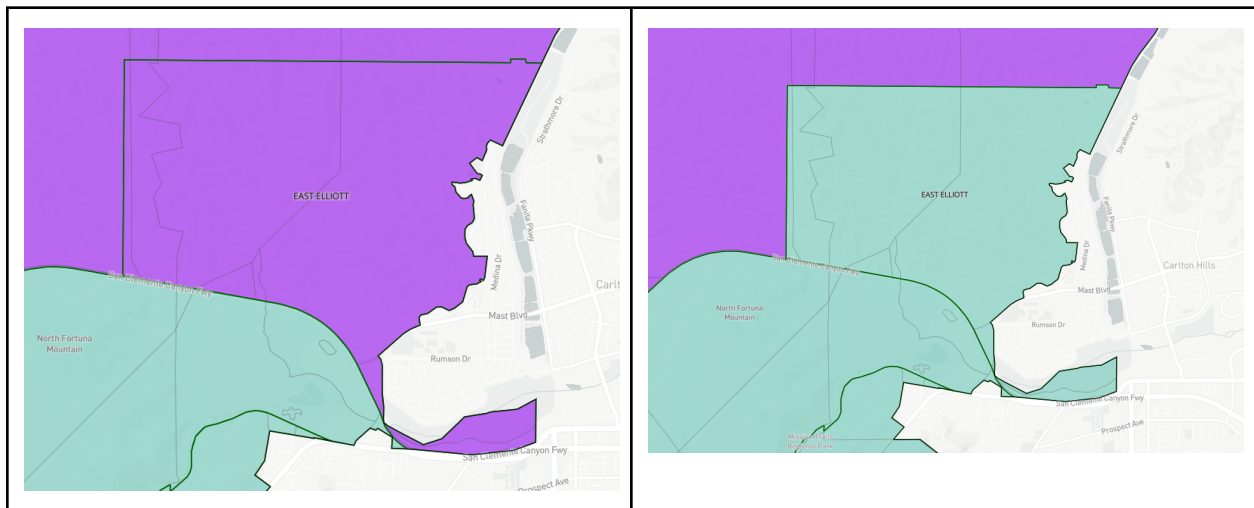
Cleaning Up Pacific Beach

Population Change: 217 people moved from District 2 to District 1



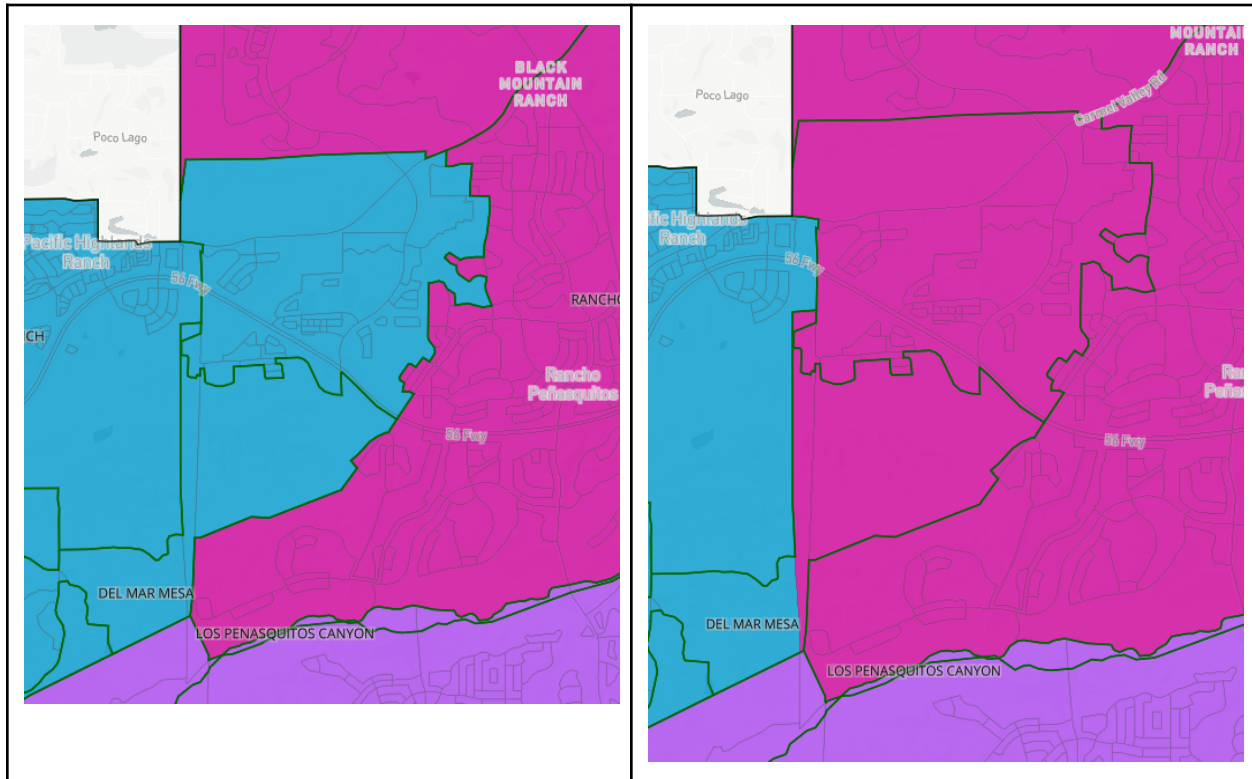
Adding East Elliott to District 7

Population Change: 98 people moved from District 6 to District 7



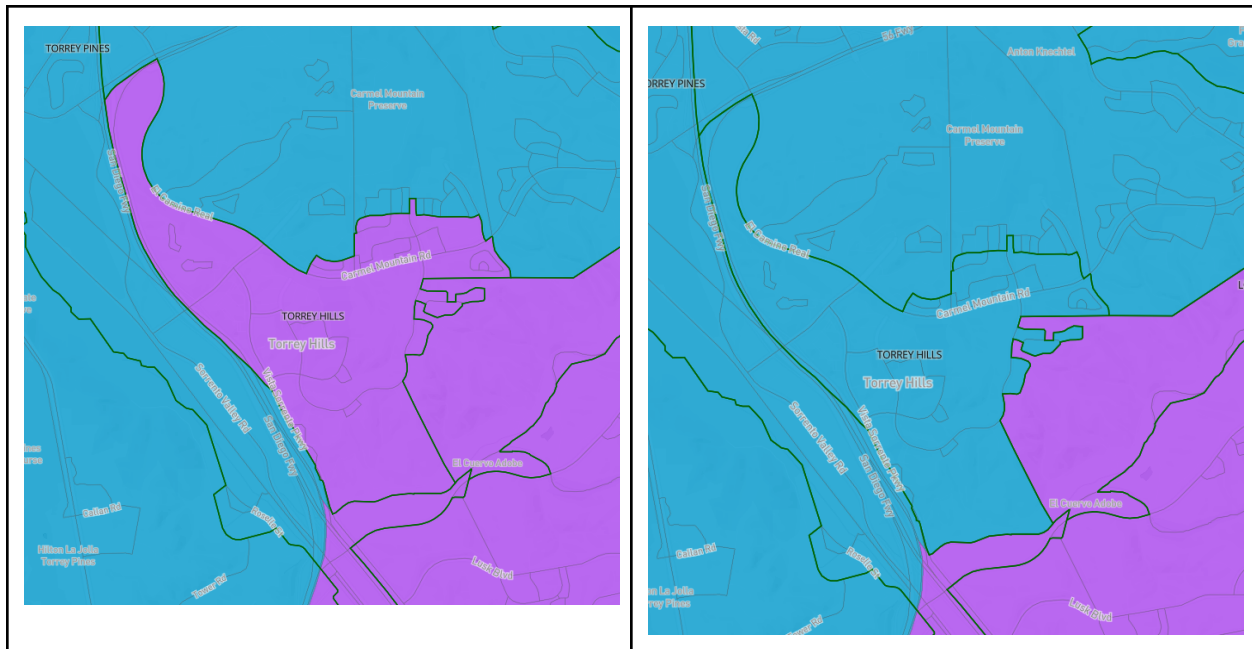
Adding Torrey Highlands to District 5

Population Change: 9037 People moved from District 1 to District 5



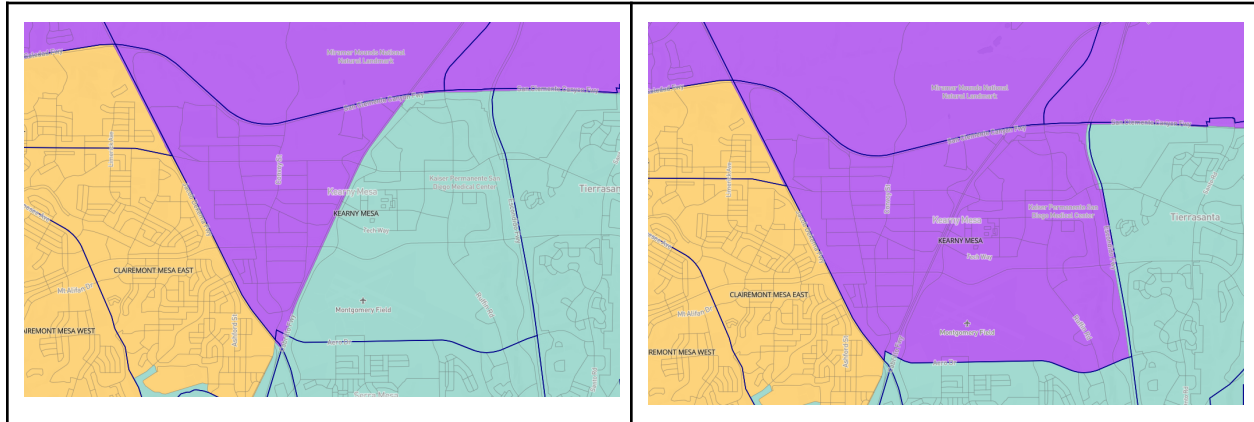
Adding Torrey Hills to District 1

Population Change: 6916 people moved from District 6 to District 1



Adding Kearny Mesa to District 6

Population Change: 4093 people moved from District 7 to District 6



Population and Deviation

District	Total Population	Raw Deviation	% Deviation
1	154,385	(48)	-0.03%
2	148,609	(5,824)	-3.77%
3	155,013	580	0.38%
4	152,014	(2,419)	-1.57%
5	161,228	6,795	4.40%
6	152,611	(1,822)	-1.18%
7	153,745	(688)	-0.45%
8	155,397	964	0.62%
9	156,897	2,464	1.60%
Tot Pop	1,389,899	Deviation	8.17%
Ideal	154,433.2		
	2		

Population Percentage Total

District	%Latino	%Asian	%Black	% White	% AIAN, Hawaiian & PI, Other, 2+ Races
1	11.26%	18.04%	1.28%	62.46%	6.97%
2	19.59%	7.57%	3.11%	61.84%	7.89%
3	23.53%	7.08%	5.56%	56.84%	6.99%
4	47.81%	21.81%	15.51%	9.84%	5.03%
5	11.02%	29.64%	2.06%	49.80%	7.49%
6	14.33%	39.62%	3.15%	35.97%	6.93%
7	22.10%	12.92%	5.68%	51.02%	8.27%
8	75.86%	7.31%	4.60%	9.25%	2.98%
9	41.46%	13.26%	10.17%	29.48%	5.63%

Population Percentage VAP

District	VAP % Latino	VAP % Asian	VAP % Black	VAP % White	VAP % AIAN, Hawaiian & PI, Other, 2+ Races
1	10.57%	17.15%	1.35%	65.31%	5.62%
2	17.83%	8.07%	3.10%	64.16%	6.83%
3	21.83%	7.47%	5.51%	58.89%	6.30%
4	44.46%	23.94%	16.08%	11.11%	4.41%
5	9.86%	29.48%	2.15%	52.91%	5.60%
6	13.24%	40.31%	3.22%	37.62%	5.61%
7	19.80%	14.02%	5.51%	53.91%	6.76%
8	73.02%	8.31%	5.04%	10.81%	2.81%
9	37.85%	13.92%	9.51%	33.29%	5.42%

Population Percentage CVAP

District	CVAP %Latino	CVAP %Asian	CVAP %Black	CVAP % White	CVAP % AIAN, Hawaiian & PI, Other, 2+ Races
1	9.29%	11.75%	1.41%	74.26%	3.29%
2	15.11%	7.82%	3.76%	69.98%	3.33%
3	19.67%	5.72%	6.36%	64.88%	3.37%
4	37.41%	22.21%	21.81%	14.36%	4.22%
5	9.63%	22.43%	2.28%	61.40%	4.25%
6	13.19%	32.43%	3.79%	45.29%	5.30%
7	17.01%	12.03%	5.57%	61.65%	3.75%
8	67.30%	9.61%	6.32%	14.05%	2.71%
9	29.25%	13.19%	11.63%	42.31%	3.63%

Compactness

[Understanding Compactness](#)

District	Perimeter	Area_Sq_Mi	Polsby_Popper	Schwartzberg	Convex_Hull	Reock
1	47.6	39	0.2187	0.4676	0.58	0.2406
2	68.4	71	0.1899	0.4358	0.6784	0.3261
3	20.8	16	0.4611	0.679	0.8604	0.5737
4	27.4	18	0.2954	0.5435	0.7706	0.6204
5	86.7	60	0.1005	0.3171	0.4596	0.2197
6	54	76	0.328	0.5727	0.7407	0.3599
7	48.2	40	0.2146	0.4632	0.7017	0.2587
8	62.5	38	0.1232	0.351	0.2983	0.1562
9	23.1	15	0.3472	0.5892	0.6713	0.4156
Avg			0.2532	0.4910	0.6401	0.3523

Splits Summary

Community Planning Areas		Neighborhoods	
Split across number of districts	Number of CPAs	Split across number of districts	Number of NEIGHBORHOODs
1	43	1	99
2	13	2	25
3	3	3	1
		7	1

How to Read Map Reports

Full reports from the Haystaq-created draft maps, as well as community-submitted district plans (through 10/12) can be found on the city website as Excel files. These reports were created by proprietary python code written by HaystaqDNA. Here is a basic primer on the components/tabs of these reports:

Maps:

These are just images from the city's Districtr hosted website of each map.

Populations:

When we create a plan or export a plan from Districtr, we export it as a 'block equivalency file'. Basically the U.S. Census divided all of the geography of the City of San Diego up into 'blocks'. At its most basic, a block can correspond to a city block, but the census will also use permanent geographic features (a waterway, a canyon, a ridge, a highway) to define a block. The census then published population and demographic data associated with each block (a P.L 94-171 file). Then the Statewide Database on behalf of the state of California takes that PL file and does prisoner reallocation and reassigns in-state prisoners back to their original blocks. To create the 'Populations' report we match up the blocks of each district with the blocks in this file and summarize all of the population within this district.

Defining some of the abbreviations: NL = non-Latino, AIAN=American Indian and Alaskan Native, VAP = Voting Age Population (age 18+), CVAP19 = 2019 Citizen Voting Age Population (an estimate of eligible voters).

Deviations are calculated against an ideal population of each district. To find the ideal population we simply divide the population of San Diego (1,389,899) by the number of districts(9) to find 154,433. The raw deviation is how far off this number a district population is. The final deviation number is found by adding the absolute value of the lowest negative deviation to the highest absolute value of the highest positive deviation. Example: District 9 has the lowest negative deviation of -3.06%. District 5 has the highest positive deviation of 2.80%. So the final deviation is 3.06%+ 2.80% = 5.86%

Components:

The Component report is a list of all of the Community Planning Areas and Neighborhoods and their populations that make up a district.

OldDistrict:

This report lists what existing city council districts and their populations make up the new proposed districts.

Compactness:

For more information on the math behind compactness measures, here is a good resource: <https://fisherzachary.github.io/public/r-output.html>. For these tests, the closer the score is to 1, the more compact the district, and the closer to 0, the less compact the district is.

Splits

There are two versions of the splits report. One that looks at how many districts each Community Planning Association is in and one that looks at how many districts each Neighborhood is in.

Community Splits:

'Military Facilities', 'Reserve' and 'Not Identified' show up as splits, mostly because there are multiple areas with those names. They will show up as splits on almost every map.

Keep in mind physical geography when looking at neighborhood and CPA splits. For example, Los Penasquitos Canyon will show a 0 population split on some maps. This is because there is a very long and very narrow canyon that extends eastward from the community. It falls between Park Village and Mira Mesa and has 0 population. In many of the maps for reasons of compactness we will place this canyon in a different district than the area with residents.

Neighborhood Splits:

Specifically regarding neighborhood splits: when we reduced the number of splits on the map we optimized for CPAs. Many times CPAs and Neighborhoods follow similar but not identical boundaries. Often the CPA will have its line on one side of a highway and the neighborhood the other. So there are 'many' neighborhoods that will show 0 population splits. We hold that in general you should ignore the 0 population splits.

Part of Old District

new_district	orig_dist	Population		new_district	orig_dist	Population
1	1	113,297		5	5	150,637
1	2	41,088		5	6	10,232
2	2	97,967		5	1	359
2	6	50,642		6	6	91,447
2	1	0		6	1	53,000
2	3	0		6	5	8,123
2	7	0		6	7	41
3	3	146,057		7	7	142,811
3	7	8,956		7	2	10,897
3	2	0		7	6	37
3	8	0		8	8	149,313
3	9	0		8	9	6,084
4	4	136,999		9	9	125,105
4	9	15,015		9	3	15,391
				9	4	8,709
				9	7	7,692

Components

Dist	NAME	Pop	Type	Dist	NAME	Pop	Type
1	PACIFIC BEACH	40,658	COMMUNITY	6	MIRA MESA	77,935	COMMUNITY
1	CARMEL VALLEY	35,889	COMMUNITY	6	UNIVERSITY	52,336	COMMUNITY
1	LA JOLLA	29,783	COMMUNITY	6	MILITARY FACILITIES	8,157	COMMUNITY
1	UNIVERSITY	16,950	COMMUNITY	6	KEARNY MESA	5,488	COMMUNITY
1	PACIFIC HIGHLANDS RANCH	14,379	COMMUNITY	6	SCRIPPS MIRAMAR RANCH	4,611	COMMUNITY
1	TORREY HILLS	6,916	COMMUNITY	6	RANCHO ENCANTADA	3,404	COMMUNITY
1	TORREY PINES	6,745	COMMUNITY	6	LOS PENASQUITOS CANYON	606	COMMUNITY
1	DEL MAR MESA	1,050	COMMUNITY	6	TORREY PINES	74	COMMUNITY
1	NCFUA SUBAREA II	766	COMMUNITY	6	RESERVE	0	COMMUNITY
1	FAIRBANKS RANCH COUNTRY CLUB	468	COMMUNITY	6	MIRA MESA	73,843	NEIGHBORHOOD
1	VIA DE LA VALLE	459	COMMUNITY	6	UNIVERSITY CITY	52,294	NEIGHBORHOOD
1	MISSION BAY PARK	279	COMMUNITY	6	MIRAMAR	8,346	NEIGHBORHOOD
1	RESERVE	43	COMMUNITY	6	KEARNY MESA	5,488	NEIGHBORHOOD
1	CARMEL VALLEY	51,508	NEIGHBORHOOD	6	SCRIPPS RANCH	4,760	NEIGHBORHOOD
1	PACIFIC BEACH	40,617	NEIGHBORHOOD	6	SORRENTO VALLEY	3,870	NEIGHBORHOOD
1	LA JOLLA	35,926	NEIGHBORHOOD	6	RANCHO ENCANTADA	3,404	NEIGHBORHOOD
1	TORREY PINES	11,084	NEIGHBORHOOD	6	CARMEL VALLEY	606	NEIGHBORHOOD
1	NORTH CITY	8,471	NEIGHBORHOOD	6		0	NEIGHBORHOOD
1	DEL MAR HEIGHTS	6,736	NEIGHBORHOOD	6	BAY HO	0	NEIGHBORHOOD
1	MISSION BAY	31	NEIGHBORHOOD	6	LA JOLLA	0	NEIGHBORHOOD
1	TORREY PRESERVE	12	NEIGHBORHOOD	6	NORTH CLAIREMONT	0	NEIGHBORHOOD

1		0	NEIGHBORHOOD	6	RANCHO PENASQUITOS	0	NEIGHBORHOOD
1	SORRENTO VALLEY	0	NEIGHBORHOOD	6	TIERRASANTA	0	NEIGHBORHOOD
1	TORREY HIGHLANDS	0	NEIGHBORHOOD	7	NAVAJO	53,486	COMMUNITY
1	UNIVERSITY CITY	0	NEIGHBORHOOD	7	LINDA VISTA	35,647	COMMUNITY
2	CLAIREMONT MESA	79,768	COMMUNITY	7	TIERRASANTA	30,629	COMMUNITY
2	PENINSULA	41,276	COMMUNITY	7	SERRA MESA	18,376	COMMUNITY
2	OCEAN BEACH	12,922	COMMUNITY	7	MISSION VALLEY	8,828	COMMUNITY
2	MIDWAY-PACIFIC HIGHWAY	7,569	COMMUNITY	7	KEARNY MESA	6,681	COMMUNITY
2	MISSION BEACH	3,292	COMMUNITY	7	EAST ELLIOTT	98	COMMUNITY
2	NOT IDENTIFIED	2,264	COMMUNITY	7	TIERRASANTA	27,929	NEIGHBORHOOD
2	MISSION BAY PARK	1,409	COMMUNITY	7	SERRA MESA	25,640	NEIGHBORHOOD
2	RESERVE	109	COMMUNITY	7	LINDA VISTA	24,263	NEIGHBORHOOD
2		0	COMMUNITY	7	LAKE MURRAY	17,388	NEIGHBORHOOD
2	CLAIREMONT MESA EAST	25,379	NEIGHBORHOOD	7	SAN CARLOS	13,494	NEIGHBORHOOD
2	POINT LOMA HEIGHTS	20,238	NEIGHBORHOOD	7	ALLIED GARDENS	12,020	NEIGHBORHOOD
2	BAY PARK	16,957	NEIGHBORHOOD	7	MORENA	10,897	NEIGHBORHOOD
2	NORTH CLAIREMONT	14,915	NEIGHBORHOOD	7	DEL CERRO	7,576	NEIGHBORHOOD
2	OCEAN BEACH	12,289	NEIGHBORHOOD	7	GRANTVILLE	5,806	NEIGHBORHOOD
2	BAY HO	12,244	NEIGHBORHOOD	7	BIRDLAND	4,737	NEIGHBORHOOD
2	CLAIREMONT MESA WEST	10,273	NEIGHBORHOOD	7	MISSION VALLEY EAST	3,508	NEIGHBORHOOD
2	MIDWAY DISTRICT	7,799	NEIGHBORHOOD	7	CLAIREMONT MESA EAST	487	NEIGHBORHOOD
2	LOMA PORTAL	5,996	NEIGHBORHOOD	7	KEARNY MESA	0	NEIGHBORHOOD
2	ROSEVILLE / FLEET RIDGE	5,884	NEIGHBORHOOD	8	OTAY MESA-NESTOR	61,284	COMMUNITY
2	WOODED AREA	3,703	NEIGHBORHOOD	8	SOUTHEASTERN SAN DIEGO	33,770	COMMUNITY
2	SUNSET CLIFFS	3,531	NEIGHBORHOOD	8	SAN YSIDRO	28,444	COMMUNITY
2	MISSION BEACH	3,460	NEIGHBORHOOD	8	OTAY MESA	19,494	COMMUNITY

2	LA PLAYA	2,367	NEIGHBORHOOD	8	MILITARY FACILITIES	7,020	COMMUNITY
2		2,261	NEIGHBORHOOD	8	BARRIO LOGAN	4,222	COMMUNITY
2	MISSION HILLS	703	NEIGHBORHOOD	8	TIJUANA RIVER VALLEY	1,077	COMMUNITY
2	MISSION BAY	551	NEIGHBORHOOD	8	DOWNTOWN	86	COMMUNITY
2	MIDTOWN	59	NEIGHBORHOOD	8	NOT IDENTIFIED	0	COMMUNITY
3	NORTH PARK	46,715	COMMUNITY	8	OTAY MESA WEST	30,112	NEIGHBORHOOD
3	DOWNTOWN	44,083	COMMUNITY	8	SAN YSIDRO	28,290	NEIGHBORHOOD
3	UPTOWN	39,026	COMMUNITY	8	NESTOR	16,636	NEIGHBORHOOD
3	GREATER GOLDEN HILL	14,307	COMMUNITY	8	OCEAN CREST	16,580	NEIGHBORHOOD
3	MISSION VALLEY	9,031	COMMUNITY	8	LOGAN HEIGHTS	13,725	NEIGHBORHOOD
3	OLD TOWN SAN DIEGO	1,234	COMMUNITY	8	BARRIO LOGAN	11,328	NEIGHBORHOOD
3	BALBOA PARK	617	COMMUNITY	8	EGGER HIGHLANDS	9,564	NEIGHBORHOOD
3	NORTH PARK	38,693	NEIGHBORHOOD	8	SOUTHCREST	6,084	NEIGHBORHOOD
3	EAST VILLAGE	16,088	NEIGHBORHOOD	8	PALM CITY	5,316	NEIGHBORHOOD
3	HILLCREST	14,961	NEIGHBORHOOD	8	GRANT HILL	3,939	NEIGHBORHOOD
3	UNIVERSITY HEIGHTS	12,276	NEIGHBORHOOD	8	SHELLTOWN	3,913	NEIGHBORHOOD
3	GOLDEN HILL	9,081	NEIGHBORHOOD	8	STOCKTON	3,322	NEIGHBORHOOD
3	CORE-COLUMBIA	9,035	NEIGHBORHOOD	8	OTAY MESA	2,914	NEIGHBORHOOD
3	PARK WEST	8,751	NEIGHBORHOOD	8	SHERMAN HEIGHTS	2,787	NEIGHBORHOOD
3	MARINA	7,190	NEIGHBORHOOD	8	TIJUANA RIVER VALLEY	733	NEIGHBORHOOD
3	MISSION VALLEY EAST	6,351	NEIGHBORHOOD	8	BORDER	154	NEIGHBORHOOD
3	MISSION HILLS	5,845	NEIGHBORHOOD	8		0	NEIGHBORHOOD
3	SOUTH PARK	5,391	NEIGHBORHOOD	9	MID-CITY:CITY HEIGHTS	66,699	COMMUNITY
3	MIDTOWN	4,509	NEIGHBORHOOD	9	COLLEGE AREA	24,969	COMMUNITY
3	LITTLE ITALY	4,108	NEIGHBORHOOD	9	MID-CITY:EASTE RN AREA	22,461	COMMUNITY

3	CORTEZ	3,943	NEIGHBORHOOD	9	MID-CITY:NOR MAL HEIGHTS	15,361	COMMUNITY
3	MISSION VALLEY WEST	2,605	NEIGHBORHOOD	9	MID-CITY:KENS INGTON-TALMA DGE	14,484	COMMUNITY
3	HARBORVIEW	1,348	NEIGHBORHOOD	9	MISSION VALLEY	7,722	COMMUNITY
3	OLD TOWN	1,127	NEIGHBORHOOD	9	SOUTHEASTERN SAN DIEGO	5,184	COMMUNITY
3	PETCO PARK	885	NEIGHBORHOOD	9		17	COMMUNITY
3	GASLAMP	863	NEIGHBORHOOD	9	ENCANTO NEIGHBORHOO DS	0	COMMUNITY
3	BURLINGAME	705	NEIGHBORHOOD	9	COLLEGE WEST	11,830	NEIGHBORHOOD
3	HORTON PLAZA	641	NEIGHBORHOOD	9	COLINA DEL SOL	10,321	NEIGHBORHOOD
3	BALBOA PARK	617	NEIGHBORHOOD	9	NORMAL HEIGHTS	10,246	NEIGHBORHOOD
3		0	NEIGHBORHOOD	9	ROLANDO	10,040	NEIGHBORHOOD
3	AZALEA/HOLLYW OOD PARK	0	NEIGHBORHOOD	9	COLLEGE EAST	9,945	NEIGHBORHOOD
3	CASTLE	0	NEIGHBORHOOD	9	TALMADGE	9,443	NEIGHBORHOOD
3	CHEROKEE POINT	0	NEIGHBORHOOD	9	CASTLE	9,370	NEIGHBORHOOD
3	GRANT HILL	0	NEIGHBORHOOD	9	CORRIDOR	7,607	NEIGHBORHOOD
3	MIDWAY DISTRICT	0	NEIGHBORHOOD	9	TERALTA EAST	6,259	NEIGHBORHOOD
3	SHERMAN HEIGHTS	0	NEIGHBORHOOD	9	EL CERRITO	5,984	NEIGHBORHOOD
3	STOCKTON	0	NEIGHBORHOOD	9	KENSINGTON	5,963	NEIGHBORHOOD
4	SKYLINE-PARADI SE HILLS	67,611	COMMUNITY	9	FAIRMOUNT VILLAGE	5,361	NEIGHBORHOOD
4	ENCANTO NEIGHBORHOOD S	48,624	COMMUNITY	9	MT HOPE	5,184	NEIGHBORHOOD
4	MID-CITY:EASTER N AREA	18,169	COMMUNITY	9	ADAMS NORTH	5,115	NEIGHBORHOOD
4	SOUTHEASTERN SAN DIEGO	15,326	COMMUNITY	9	TERALTA WEST	4,957	NEIGHBORHOOD
4	MID-CITY:CITY HEIGHTS	2,284	COMMUNITY	9	GRANTVILLE	4,876	NEIGHBORHOOD

4	BAY TERRACES	31,386	NEIGHBORHOOD		9	REDWOOD VILLAGE	4,868	NEIGHBORHOOD
4	PARADISE HILLS	17,263	NEIGHBORHOOD		9	CHEROKEE POINT	4,672	NEIGHBORHOOD
4	MOUNTAIN VIEW	15,326	NEIGHBORHOOD		9	CHOLLAS CREEK	4,233	NEIGHBORHOOD
4	OAK PARK	14,742	NEIGHBORHOOD		9	SWAN CANYON	4,143	NEIGHBORHOOD
4	VALENCIA PARK	10,739	NEIGHBORHOOD		9	ROLANDO PARK	3,841	NEIGHBORHOOD
4	JAMACHA LOMITA	10,198	NEIGHBORHOOD		9	AZALEA/HOLLY WOOD PARK	3,682	NEIGHBORHOOD
4	ENCANTO	9,520	NEIGHBORHOOD		9	FAIRMOUNT PARK	2,855	NEIGHBORHOOD
4	LINCOLN PARK	9,484	NEIGHBORHOOD		9	FOX CANYON	2,165	NEIGHBORHOOD
4	SKYLINE	8,764	NEIGHBORHOOD		9	MISSION VALLEY EAST	1,738	NEIGHBORHOOD
4	O'FARRELL	6,848	NEIGHBORHOOD		9	QUALCOMM	1,108	NEIGHBORHOOD
4	RIDGEVIEW/WEBSTER	5,711	NEIGHBORHOOD		9	ISLENAIR	1,074	NEIGHBORHOOD
4	CHOLLAS VIEW	4,523	NEIGHBORHOOD		9		17	NEIGHBORHOOD
4	EMERALD HILLS	4,395	NEIGHBORHOOD		9	NORTH PARK	0	NEIGHBORHOOD
4	ALTA VISTA	2,519	NEIGHBORHOOD					
4	BROADWAY HEIGHTS	596	NEIGHBORHOOD					
4	LOGAN HEIGHTS	0	NEIGHBORHOOD					
5	RANCHO PENASQUITOS	43,018	COMMUNITY					
5	RANCHO BERNARDO	42,902	COMMUNITY					
5	SCRIPPS MIRAMAR RANCH	16,391	COMMUNITY					
5	BLACK MOUNTAIN RANCH	15,795	COMMUNITY					
5	MIRAMAR RANCH NORTH	11,880	COMMUNITY					
5	CARMEL MOUNTAIN RANCH	11,207	COMMUNITY					
5	SABRE SPRINGS	10,786	COMMUNITY					

5	TORREY HIGHLANDS	8,678	COMMUNITY				
5	DEL MAR MESA	359	COMMUNITY				
5	SAN PASQUAL	212	COMMUNITY				
5	RANCHO PENASQUITOS	44,430	NEIGHBORHOOD				
5	RANCHO BERNARDO	42,925	NEIGHBORHOOD				
5	BLACK MOUNTAIN RANCH	17,392	NEIGHBORHOOD				
5	SCRIPPS RANCH	15,533	NEIGHBORHOOD				
5	MIRAMAR RANCH NORTH	12,738	NEIGHBORHOOD				
5	CARMEL MOUNTAIN	11,207	NEIGHBORHOOD				
5	SABRE SPRINGS	10,786	NEIGHBORHOOD				
5	TORREY HIGHLANDS	6,028	NEIGHBORHOOD				
5	SAN PASQUAL	189	NEIGHBORHOOD				
5		0	NEIGHBORHOOD				

Community Planning Association Splits

COMMUNITY	DIST	Total Population		COMMUNITY	DIST	Total Population
BALBOA PARK	3	617		NAVAJO	7	53,486
BARRIO LOGAN	8	4,222		NCFUA SUBAREA II	1	766
BLACK MOUNTAIN RANCH	5	15,795		NORTH PARK	3	46,715
CARMEL MOUNTAIN RANCH	5	11,207		NOT IDENTIFIED	2	2,264
CARMEL VALLEY	1	35,889		NOT IDENTIFIED	8	0
CLAIREMONT MESA	2	79,768		OCEAN BEACH	2	12,922
COLLEGE AREA	9	24,969		OLD TOWN SAN DIEGO	3	1,234
DEL MAR MESA	1	1,050		OTAY MESA	8	19,494
DEL MAR MESA	5	359		OTAY MESA-NESTOR	8	61,284
DOWNTOWN	3	44,083		PACIFIC BEACH	1	40,658
DOWNTOWN	8	86		PACIFIC HIGHLANDS RANCH	1	14,379
EAST ELLIOTT	7	98		PENINSULA	2	41,276
ENCANTO NEIGHBORHOODS	4	48,624		RANCHO BERNARDO	5	42,902
ENCANTO NEIGHBORHOODS	9	0		RANCHO ENCANTADA	6	3,404
FAIRBANKS RANCH COUNTRY CLUB	1	468		RANCHO PENASQUITOS	5	43,018
GREATER GOLDEN HILL	3	14,307		RESERVE	2	109
KEARNY MESA	7	6,681		RESERVE	1	43
KEARNY MESA	6	5,488		RESERVE	6	0
LA JOLLA	1	29,783		SABRE SPRINGS	5	10,786
LINDA VISTA	7	35,647		SAN PASQUAL	5	212
LOS PENASQUITOS CANYON	6	606		SAN YSIDRO	8	28,444
MID-CITY:CITY HEIGHTS	9	66,699		SCRIPPS MIRAMAR RANCH	5	16,391
MID-CITY:CITY HEIGHTS	4	2,284		SCRIPPS MIRAMAR RANCH	6	4,611
MID-CITY:EASTERN AREA	9	22,461		SERRA MESA	7	18,376
MID-CITY:EASTERN AREA	4	18,169		SKYLINE-PARADISE HILLS	4	67,611

MID-CITY:KENSINGTON-T ALMADGE	9	14,484		SOUTHEASTERN SAN DIEGO	8	33,770
MID-CITY:NORMAL HEIGHTS	9	15,361		SOUTHEASTERN SAN DIEGO	4	15,326
MIDWAY-PACIFIC HIGHWAY	2	7,569		SOUTHEASTERN SAN DIEGO	9	5,184
MILITARY FACILITIES	6	8,157		TIERRASANTA	7	30,629
MILITARY FACILITIES	8	7,020		TIJUANA RIVER VALLEY	8	1,077
MIRA MESA	6	77,935		TORREY HIGHLANDS	5	8,678
MIRAMAR RANCH NORTH	5	11,880		TORREY HILLS	1	6,916
MISSION BAY PARK	2	1,409		TORREY PINES	1	6,745
MISSION BAY PARK	1	279		TORREY PINES	6	74
MISSION BEACH	2	3,292		UNIVERSITY	6	52,336
MISSION VALLEY	3	9,031		UNIVERSITY	1	16,950
MISSION VALLEY	7	8,828		UPTOWN	3	39,026
MISSION VALLEY	9	7,722		VIA DE LA VALLE	1	459
					9	17
					2	0

Neighborhood Splits

NEIGHBORHOOD	DIST	Total Population		NEIGHBORHOOD	DIST	Total Population
ADAMS NORTH	9	5,115		MISSION BEACH	2	3,460
ALLIED GARDENS	7	12,020		MISSION HILLS	3	5,845
ALTA VISTA	4	2,519		MISSION HILLS	2	703
AZALEA/HOLLYWOOD PARK	9	3,682		MISSION VALLEY EAST	3	6,351
AZALEA/HOLLYWOOD PARK	3	0		MISSION VALLEY EAST	7	3,508
BALBOA PARK	3	617		MISSION VALLEY EAST	9	1,738
BARRIO LOGAN	8	11,328		MISSION VALLEY WEST	3	2,605
BAY HO	2	12,244		MORENA	7	10,897
BAY HO	6	0		MOUNTAIN VIEW	4	15,326
BAY PARK	2	16,957		MT HOPE	9	5,184
BAY TERRACES	4	31,386		NESTOR	8	16,636
BIRDLAND	7	4,737		NORMAL HEIGHTS	9	10,246
BLACK MOUNTAIN RANCH	5	17,392		NORTH CITY	1	8,471
BORDER	8	154		NORTH CLAIREMONT	2	14,915
BROADWAY HEIGHTS	4	596		NORTH CLAIREMONT	6	0
BURLINGAME	3	705		NORTH PARK	3	38,693
CARMEL MOUNTAIN	5	11,207		NORTH PARK	9	0
CARMEL VALLEY	1	51,508		O'FARRELL	4	6,848
CARMEL VALLEY	6	606		OAK PARK	4	14,742
CASTLE	9	9,370		OCEAN BEACH	2	12,289
CASTLE	3	0		OCEAN CREST	8	16,580
CHEROKEE POINT	9	4,672		OLD TOWN	3	1,127
CHEROKEE POINT	3	0		OTAY MESA	8	2,914
CHOLLAS CREEK	9	4,233		OTAY MESA WEST	8	30,112
CHOLLAS VIEW	4	4,523		PACIFIC BEACH	1	40,617
CLAIREMONT MESA EAST	2	25,379		PALM CITY	8	5,316
CLAIREMONT MESA EAST	7	487		PARADISE HILLS	4	17,263
CLAIREMONT MESA WEST	2	10,273		PARK WEST	3	8,751
COLINA DEL SOL	9	10,321		PETCO PARK	3	885
COLLEGE EAST	9	9,945		POINT LOMA HEIGHTS	2	20,238

COLLEGE WEST	9	11,830		QUALCOMM	9	1,108
CORE-COLUMBIA	3	9,035		RANCHO BERNARDO	5	42,925
CORRIDOR	9	7,607		RANCHO ENCANTADA	6	3,404
				RANCHO		
CORTEZ	3	3,943		PENASQUITOS	5	44,430
				RANCHO		
DEL CERRO	7	7,576		PENASQUITOS	6	0
DEL MAR HEIGHTS	1	6,736		REDWOOD VILLAGE	9	4,868
EAST VILLAGE	3	16,088		RIDGEVIEW/WEBSTER	4	5,711
EGGER HIGHLANDS	8	9,564		ROLANDO	9	10,040
EL CERRITO	9	5,984		ROLANDO PARK	9	3,841
				ROSEVILLE / FLEET		
EMERALD HILLS	4	4,395		RIDGE	2	5,884
ENCANTO	4	9,520		SABRE SPRINGS	5	10,786
FAIRMOUNT PARK	9	2,855		SAN CARLOS	7	13,494
FAIRMOUNT VILLAGE	9	5,361		SAN PASQUAL	5	189
FOX CANYON	9	2,165		SAN YSIDRO	8	28,290
GASLAMP	3	863		SCRIPPS RANCH	5	15,533
GOLDEN HILL	3	9,081		SCRIPPS RANCH	6	4,760
GRANT HILL	8	3,939		SERRA MESA	7	25,640
GRANT HILL	3	0		SHELLTOWN	8	3,913
GRANTVILLE	7	5,806		SHERMAN HEIGHTS	8	2,787
GRANTVILLE	9	4,876		SHERMAN HEIGHTS	3	0
HARBORVIEW	3	1,348		SKYLINE	4	8,764
HILLCREST	3	14,961		SORRENTO VALLEY	6	3,870
HORTON PLAZA	3	641		SORRENTO VALLEY	1	0
ISLENAIR	9	1,074		SOUTH PARK	3	5,391
JAMACHA LOMITA	4	10,198		SOUTHCREST	8	6,084
KEARNY MESA	6	5,488		STOCKTON	8	3,322
KEARNY MESA	7	0		STOCKTON	3	0
KENSINGTON	9	5,963		SUNSET CLIFFS	2	3,531
LA JOLLA	1	35,926		SWAN CANYON	9	4,143
LA JOLLA	6	0		TALMADGE	9	9,443
LA PLAYA	2	2,367		TERALTA EAST	9	6,259
LAKE MURRAY	7	17,388		TERALTA WEST	9	4,957
LINCOLN PARK	4	9,484		TIERRASANTA	7	27,929
LINDA VISTA	7	24,263		TIERRASANTA	6	0
LITTLE ITALY	3	4,108		TIJUANA RIVER VALLEY	8	733
LOGAN HEIGHTS	8	13,725		TORREY HIGHLANDS	5	6,028

LOGAN HEIGHTS	4	0		TORREY HIGHLANDS	1	0
LOMA PORTAL	2	5,996		TORREY PINES	1	11,084
MARINA	3	7,190		TORREY PRESERVE	1	12
MIDTOWN	3	4,509		UNIVERSITY CITY	6	52,294
MIDTOWN	2	59		UNIVERSITY CITY	1	0
MIDWAY DISTRICT	2	7,799		UNIVERSITY HEIGHTS	3	12,276
MIDWAY DISTRICT	3	0		VALENCIA PARK	4	10,739
MIRA MESA	6	73,843		WOODED AREA	2	3,703
MIRAMAR	6	8,346			2	2,261
MIRAMAR RANCH NORTH	5	12,738			9	17
MISSION BAY	2	551			1	0
MISSION BAY	1	31			3	0
					5	0
					6	0
					8	0