



THE CITY OF SAN DIEGO

## F Street Emergency Water Main Replacement Construction Project

# TRAFFIC AND PARKING ADVISORY

The City of San Diego is replacing a 102-year-old deteriorating water pipeline on F Street, between 17<sup>th</sup> Street and Park Boulevard. Normal construction hours will take place Monday through Friday, 8:30 a.m. to 5 p.m.

To facilitate the emergency construction work, temporary road and parking-lot closures and traffic detours will be required. This advisory provides a summary of the anticipated impacts.

**Please use caution when traveling through the construction zone, and follow the temporary detour and no parking signs. The no parking signs will be enforced. Make sure to include additional time into your daily commute.**

**Monday through Friday, (8:30 a.m. to 5 p.m.):**

**F Street Drive Westbound From Interstate 94 to Park Boulevard**

- One lane open

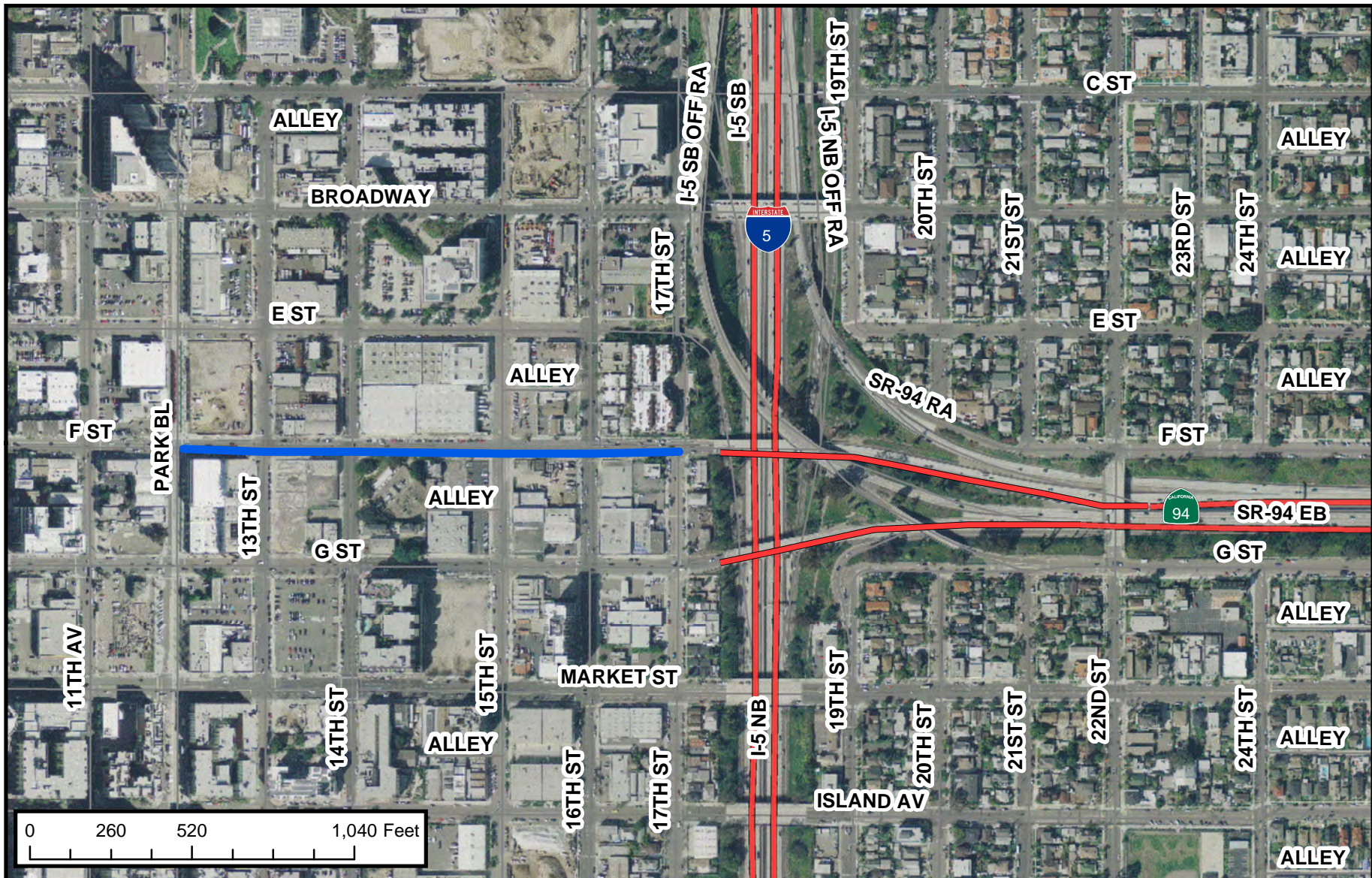
Thank you for your patience and understanding while work progresses on this emergency project. Every provision will be taken to quickly and efficiently complete the work.

**For More Information:**

**Visit:** <http://www.sandiego.gov/cip/projectinfo/featuredprojects/fstreetproj.shtml>

**Email:** [engineering@sandiego.gov](mailto:engineering@sandiego.gov)

**Call:** Scott Robinson, Public Information Officer  
(619) 533-3749



**LEGEND**

- **F Street Emergency Water Main Project -Monday through Friday (8:30 a.m. to 5 p.m.)**  
Temporary traffic and parking impacts include lane closures, and no parking along the project alignment.

**F Street Emergency Water Main Project**



Starting March 25, 2013



THIS MAP/DATA IS PROVIDED WITHOUT WARRANTY OF ANY KIND, EITHER EXPRESS OR IMPLIED, INCLUDING BUT NOT LIMITED TO, THE IMPLIED WARRANTIES OF MERCHANTABILITY AND FITNESS FOR A PARTICULAR PURPOSE. Note: This product may contain information from the SANDAG Regional Information System which cannot be reproduced without the written permission of SANDAG. This product may contain information reproduced with permission granted by RAND McNALLY & COMPANY® to SanGIS. This map is copyrighted by RAND McNALLY & COMPANY®. It is unlawful to copy or reproduce all or any part thereof, whether for personal use or resale, without the prior, written permission of RAND McNALLY & COMPANY®.