

## Appendix A

### RESERVOIR DRIVE CHANNEL – MMP Map 64a

#### IMP Maintenance Methodology Table

<b>FACILITY/CHANNEL</b>	5410 – 5504 RESERVOIR DRIVE
<b>DIMENSIONS</b>	TRAPAZOIDAL, CONCRETE-LINED 810' LENGTH APPROX. 10' TOP WIDTH 2-4.5' BOTTOM WIDTH 3-3.5' IN DEPTH <sup>1</sup> / <sub>2</sub> -1' OF SEDIMENT 130 TONS – APPROX. 264 CUBIC YARDS FROM CHANNEL
<b>MAINTENANCE METHOD</b>	MECHANIZED SEDIMENT & VEGETATION REMOVAL
<b>EQUIPMENT</b> (EQUIPMENT WILL BE EQUIVALENT OR SMALLER IN SIZE/TYPE)	<ul style="list-style-type: none"> <li>• GRADALL</li> <li>• BOBCAT (S650)</li> <li>• DUMP TRUCKS(S) (10/12 YD)</li> <li>• BACKHOE (JOHN DEERE 410)</li> <li>• VACTOR (2100 PLUS PD)</li> </ul>
<b>SCHEDULE</b>	IN CHANNEL WORK TOOK APPROXIMATELY 1 DAY: 7:00 AM TO 7:00 PM ON 11/28/14
<b>STAFFING</b>	18 PEOPLE
<b>MAINTENANCE PROCEDURE</b>	
<b>CHANNEL SEQUENCE</b>	NA
<b>ACCESS &amp; LOADING AREA(S)</b>	<i>ACCESS &amp; LOADING AREA:</i> ENTIRE LENGTH OF CHANNEL - GRADALL LOWERED BOBCAT INTO CHANNEL FROM THE STREET. <i>LOADING AREA:</i> ENTIRE LENGTH OF CHANNEL – GRADALL AND BACKHOE SAT ON RESERVOIR DRIVE AND LOADED TRUCKS. VACTOR REMOVED STANDING, INCOMING, OR CONTAINED WATER FROM CHANNEL
<b>STAGING &amp; STOCKPILE AREA</b>	EQUIPMENT AND TRUCKS WERE STAGED ON ASPHALT PAVED STREET (ALONG RESERVOIR DRIVE) ADJACENT TO CHANNEL. ALL MATERIALS WERE HAULED IMMEDIATELY TO A LEGAL DISPOSAL SITE (MIRAMAR LANDIFLL).
<b>METHODOLOGY</b>	<ol style="list-style-type: none"> <li>1. VACTOR REMOVED STANDING WATER FROM CHANNEL. WAS THEN POSITIONED AT DOWNSTREAM ENDS TO CAPTURE ANY INCOMING OR CONTAINED FLOWS.</li> <li>2. BOBCAT WAS LOWERED INTO THE CHANNEL WITHIN ACCESS AREA VIA GRADALL.</li> <li>3. BOBCAT PUSHED VEGETATION AND SEDIMENT TO GRADALL AND BACKHOE STATIONED AT LOADING AREA.</li> <li>4. GRADALL AND BACKHOE SCOOPED MATERIAL FROM CENTRAL LOCATION WITHIN CHANNEL AND LOADED MATERIAL INTO WAITING DUMP TRUCKS.</li> <li>5. DUMP TRUCKS HAULED MATERIAL TO LEGAL DISPOSAL SITE.</li> <li>6. BOBCAT WAS LIFTED OUT OF CHANNEL VIA GRADALL.</li> </ol>

## Appendix A

### RESERVOIR DRIVE CHANNEL – MMP Map 64a

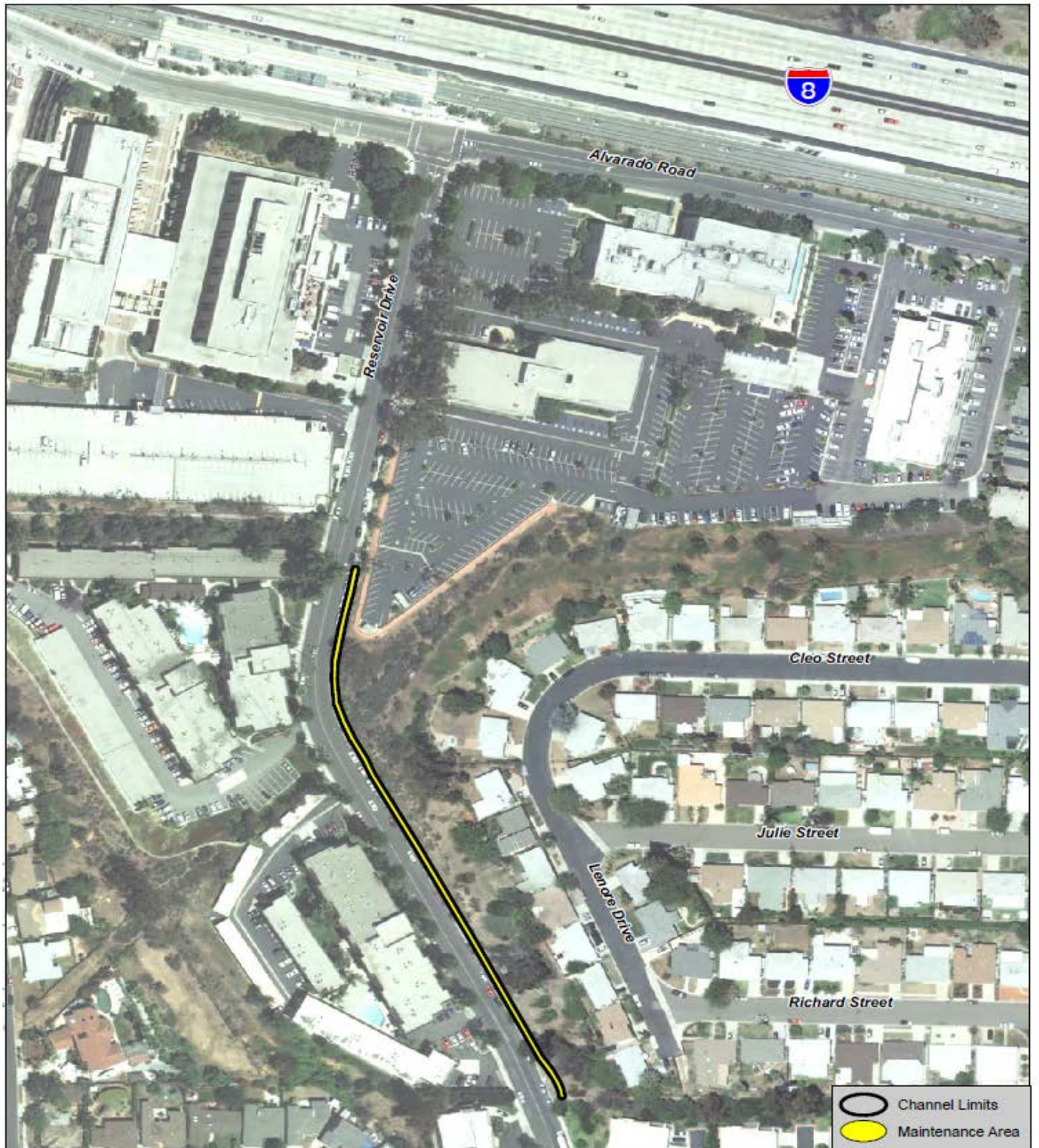
#### IMP Maintenance Methodology Table

<b>POST-MAINTENANCE</b>	1. DEMOBILIZE EQUIPMENT
<b>OTHER NOTES</b>	<ol style="list-style-type: none"><li>1. SWEEPER SWEPT ADJACENT PUBLIC RIGHTS-OF-WAY AND IMMEDIATE TRUCK LOADING SITES ONCE PROJECT WAS COMPLETED.</li><li>2. REMOVED STANDING WATER (IF ANY) WITHIN DRAINAGE FACILITY WITH VACTOR.</li><li>3. NO REFUELING OCCURED AT JOBSITE.</li></ol>

Appendix A

RESERVOIR DRIVE CHANNEL – MMP Map 64a

IMP Maintenance Methodology Table



**Project Location**

RESERVOIR DRIVE CHANNEL