

Assessor's Map No. 29
 Being portions of
 Pueblo Lots 190, 191, 196, 197 + Vicinity
 Scale: 1" = 200'
 Allen & Rowe, CEs.
 Mar. 1933.

MICROFILMED
 DEC 10 1963

ASSESSORS MAP NO. 29

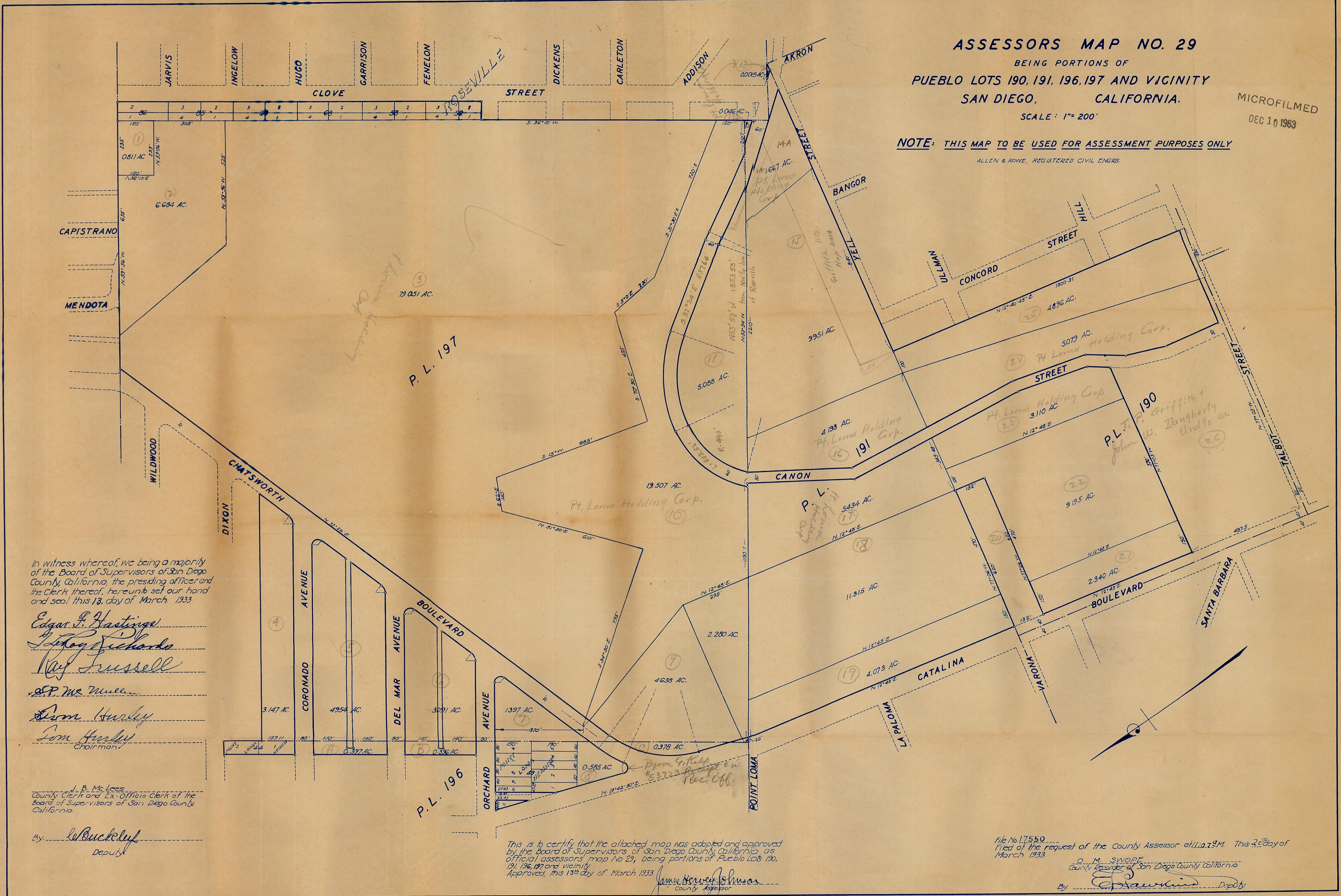
BEING PORTIONS OF
PUEBLO LOTS 190, 191, 196, 197 AND VICINITY
SAN DIEGO, CALIFORNIA.

SCALE: 1" = 200'

MICROFILMED
 DEC 10 1963

NOTE: THIS MAP TO BE USED FOR ASSESSMENT PURPOSES ONLY

ALLEN & ROWE, REGISTERED CIVIL ENGRS.



In witness whereof, we being a majority of the Board of Supervisors of San Diego County, California, the presiding officer and the Clerk thereof, hereunto set our hand and seal this 13 day of March, 1933

Edgar P. Hastings
Henry Richards
Ray Russell
W.P. McMillen
Sam Hurley
Sam Hurley
 Chairman

J. B. McLees
 County Clerk and Ex-Officio Clerk of the Board of Supervisors of San Diego County, California.

By *Le Buckley*
 Deputy

This is to certify that the attached map was adopted and approved by the Board of Supervisors of San Diego County, California, as official assessors' map No 29, being portions of Pueblo Lots 190, 191, 196, 197 and vicinity. Approved, this 13th day of March 1933.

James Henry Johnson
 County Assessor

File No. 17550
 Filed at the request of the County Assessor at 11:21 A.M. This 20th day of March 1933.

O. M. Swope
 County Recorder of San Diego County California
 By *Ed Sawkins* Deputy