

37710  
Louis J. Beach  
Trust Co.

Assessor's map 6  
see 37710

# MAP OF PARADISE VALLEY HEIGHTS.

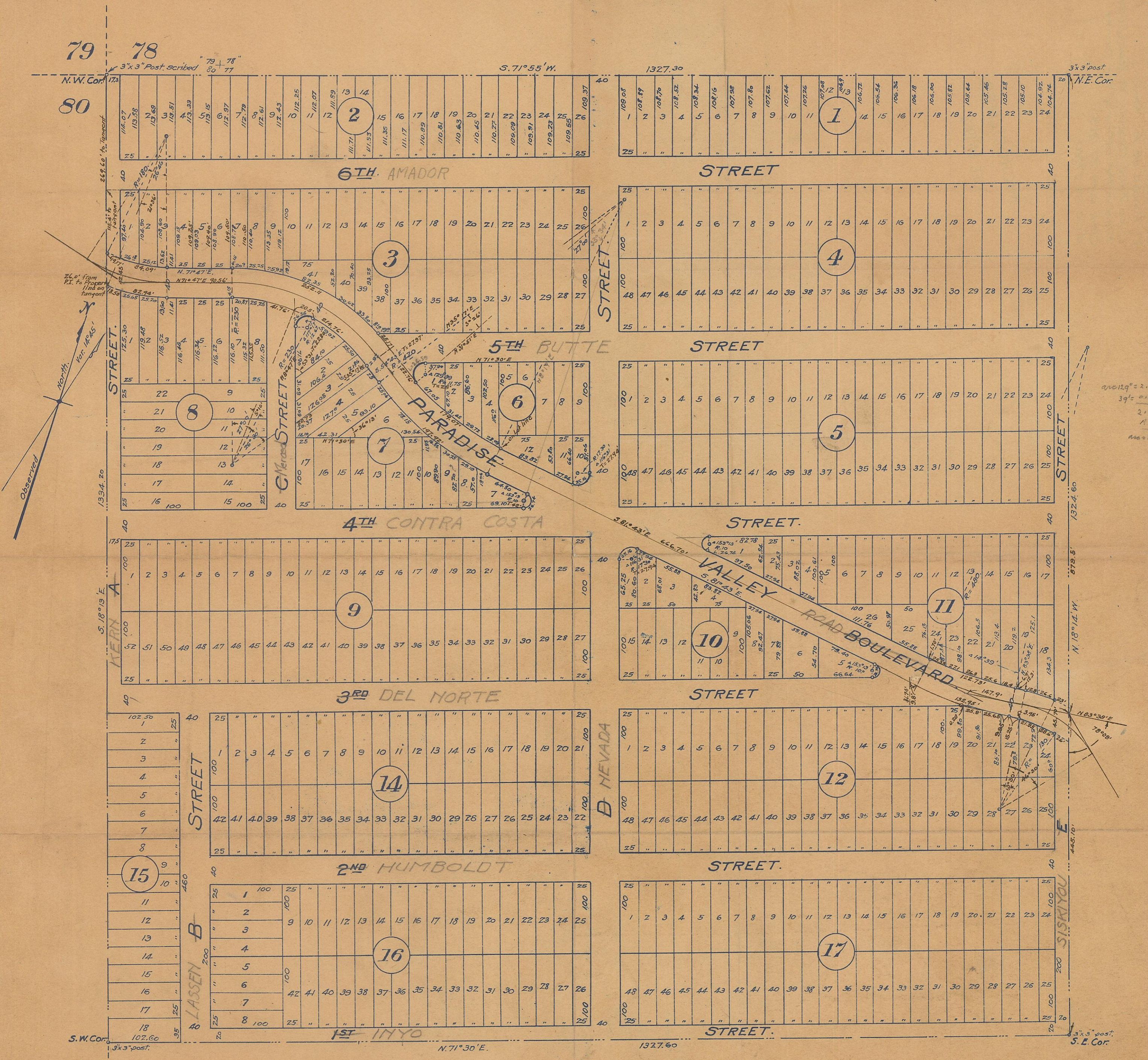
San Diego County, California.

SCALE 100 FEET TO THE INCH.

Being a Subdivision of the Northwest Quarter of Quarter Section Seventy-seven (77) of Rancho de la Nacion, in the County of San Diego, State of California, according to Map No 166 on file in the office of the County Recorder of said San Diego County.

MICROFILMED

DEC 10 1963



SURVEYED APRIL 1923.

BY *Will S. King*

Licensed Surveyor.

NOTE: Data shown hereon with black ink was taken from two working plats loaned to the City Engineer's Office by Will S. King, June 1, 1936. J.L. Mohler.

Filed in the office of the County Clerk, San Diego County, California, this 15th day of June 1923

By *J. L. Mohler* County Clerk.  
*J. L. Mohler* Deputy.