

Canyon Sewer Cleaning Program And Long Term Sewer Maintenance Program Progress Report



SD Public Utilities

**2016 Annual Report
July 1, 2015 – June 30, 2016**

*Cover - Top Left: Sewer Repair Work at Torrey Pines, Top Right: Helicopter Assisting with Sewer Emergency,
Center: Least Bell's Vireo at Mitigation Site, Bottom: Hydroseeding at Tecolote*

TABLE OF CONTENTS

LONG TERM ACCESS PROJECTS	2
MAINTENANCE, MONITORING, AND MAPPING	5
CONSTRUCTION AND EMERGENCY PROJECTS	6
25 MONTH REVEGETATION AND RESTORATION PROJECTS	8
MITIGATION PROJECTS	10
Canyon View Upland Restoration Mitigation Project	12
Central Tecolote Enhancement Mitigation Project	14
Rose Canyon Mitigation Project	16
San Clemente Canyon Mitigation Project	18
Rancho Mission Canyon Wetland Enhancement Project	20
Tecolote Canyon Mitigation Project	22
San Diego River Wetland Creation Project	24
Los Peñasquitos North Wetland Creation Project	26
Lake Murray Mitigation Project	28
El Rancho Peñasquitos Wetland Enhancement Project	30
Otay Mesa Upland Mitigation Bank	32
Stadium Wetland Mitigation Project	34

LIST OF FIGURES

Figure 1	Public Utilities Mitigation Sites Overview Map
Figure 2	Canyon View Upland Restoration Mitigation Project Vicinity Map
Figure 3	Central Tecolote Mitigation Vicinity Map
Figure 4	Rose Canyon Mitigation Site Vicinity Map
Figure 5	San Clemente Mitigation Project Vicinity Map
Figure 6	Rancho Mission Mitigation Vicinity Map
Figure 7	Tecolote Canyon Mitigation Vicinity Map
Figure 8	San Diego River Mitigation Project Vicinity Map
Figure 9	Los Peñasquitos North Wetland Mitigation Vicinity Map
Figure 10	Lake Murray Mitigation Project Vicinity Map
Figure 11	El Rancho Peñasquitos Mitigation Vicinity Map
Figure 12	Otay Mesa Upland Mitigation Bank Vicinity Map
Figure 13	Stadium Mitigation Site Vicinity Map

ATTACHMENTS

Attachment A	25 Month Revegetation and Restoration Projects Status Table
Attachment B	Mitigation Summary Table
Attachment C	Mitigation Assignment Summary Table

ACRONYMS AND ABBREVIATIONS

ACOE	United States Army Corps of Engineers
BMP	Best Management Practices
CDFW	California Department of Fish and Wildlife
CIP	Capital Improvement Project
DSD	Development Services Department
MEAP	Long Term Maintenance and Emergency Access Plan
MHPA	Multiple Habitat Planning Area
OSCAC	Open Space Canyons Advisory Committee
PEIR	Programmatic Environmental Impact Report
PEP	Plant establishment period
Program	Canyon Sewer Cleaning Program and the Long-term Canyon Sewer Maintenance Program
Public Utilities	City of San Diego Public Utilities Department
ROF	Redirection of Flow
SCR	Substantial Conformance Review
WWC	Wastewater Collection Division

EXECUTIVE SUMMARY

In response to an Administrative Order from the U.S. Environmental Protection Agency, in an effort to reduce sewer spills and beach closures, and under the direction of Council Policies 400-13 and 400-14, the City of San Diego's Public Utilities Department (Public Utilities) has adopted the Canyon Sewer Cleaning Program and the Long-term Canyon Sewer Maintenance Program (Program) to access, clean, and repair miles of sewer infrastructure located in canyons and other environmentally sensitive areas.

A Programmatic Environmental Impact Report (PEIR) was prepared to study the Program and in July 2004 the City of San Diego approved Coastal Development Permit No. 13506 and Site Development Permit No. 13507 for the Program.

The objectives of the Program are:

- To complete the inspection and cleaning of City of San Diego sewer infrastructure located in canyons and other environmentally sensitive areas.
- To identify and implement efficient, effective, and environmentally sensitive means to accomplish the necessary canyon sewer cleaning activities.
- To provide for long-term maintenance of canyon sewer infrastructure, recognizing that availability of access to the infrastructure is essential for an effective long-term program, in accordance with Council Policy 400-13.
- To evaluate and pursue options to redirect sewage flows out of canyons and into street sewer lines or other accessible areas, where feasible and appropriate pursuant to Council Policy 400-14.

This annual report, as required by the site development permit condition 27, provides a Progress Report to the Open Space Canyons Advisory Committee (OSCAC) on the Program for the year from July 1, 2015 through June 30, 2016. This report provides the status of all Program activities within the reporting year, including habitat mitigation, long term access planning and implementation, construction and emergency projects, and 25 month revegetation and restoration projects.

LONG TERM ACCESS PROJECTS

Long Term Sewer Access Projects provide access paths to sewer infrastructure for ongoing maintenance, inspections, and cleaning. One of the first steps in determining whether an access path is needed is to prepare a redirection of flow (ROF) study. A ROF study evaluates the economic feasibility of removing all or part of the sewer from an environmentally sensitive area or canyon versus providing access to the sewer if it remains in place.

When redirection of flow is found to be infeasible from all or portions of environmentally sensitive areas/canyons, Public Utilities staff develop a Long Term Maintenance and Emergency Access Plan (MEAP) in accordance with Policy 400-13. Public Utilities staff prepares and submits a Substantial Conformance Review (SCR) packages to the Development Services Department (DSD) for a determination whether the proposed mitigation, restoration, and access planning for individual canyon areas or project is in conformance with the PEIR and Program master permits. Project specific design plans are then prepared as necessary to provide specific direction on access improvements and construction that include additional information necessary to obtain regulatory agency permits. Separate permits or clearances are obtained from the regulatory agencies prior to implementation of long term access projects.

The following canyons are in various stages of long term access planning and implementation:

- **32nd Street** –Wastewater Collection (WWC) Division will be constructing the access paths per approved Substantial Conformance Review by DSD. Public Utilities staff plans to present the project to the Community Planning group prior to construction. The new access paths will be constructed by the WWC Division in 2016.
- **Alvarado** – The long term sewer access plan design is being updated to reflect current conditions of the canyon. Environmental permits from regulatory agencies have been completed and obtained. Public Utilities staff continues to work with READ for property acquisition.
- **East Tecolote** – Project has to be re-designed due to the changes in canyon conditions and in response to resource agencies comments to minimize impacts in the canyon. Public Utilities staff will resubmit the new design to resource agencies for permits. PUD anticipates construction to be in 2018.
- **Norfolk Canyon** – Public Utilities staff was previously awaiting final regulatory agency approvals for the upsizing of one pipe culvert along the existing access path. This project is on hold until further studies are conducted regarding the access needs of alternate sewer cleaning equipment required to clean pipes that have been rehabilitated with lining technology.

- **Home Avenue Trunk Sewer** – The Public Utilities Department has received all necessary approvals for this project. Construction is scheduled to occur and be completed by fall 2016.
- **South Chollas** – Public Utilities WWC Division had completed construction of all the proposed access paths in South Chollas canyon, including the path & retaining wall to manhole 449 just East of Kelton Road. The project is currently in the post construction 25 month maintenance & monitoring period.



South Chollas –Improved Access Path to Manhole 449

- **North, Central, and Southern Tecolote Canyon** – A Long Term Access Plan Technical Memorandum for all three sections of Tecolote Canyon was completed in 2013 and incorporated into a planning study and scope of a larger Capital Improvement Projects (CIP) project. The Technical Memorandum includes the design criteria of all access paths and streambed crossing improvements. The design criteria has been included in the design of the CIP Project.
- **VanNuys Canyon** – A new ROF Study and Access Recommendation have been completed and the project will be proceeding with long term access design in 2017.
- **Mt. Elbrus** – Public Utilities staff is working on a Consistency Review to submit to DSD for approval. Once the Consistency Review is approved, then WWC Division will construct the long term access path. PUD anticipates construction to occur in 2016.

- **Manning Canyon** – Public Utilities Wastewater Collection crews were able to complete repairs to the sewer access path in December 2015. Repairs included the trimming of vegetation to re-establish the 8 foot wide access path, the construction of soil berms every 10-20 feet, and the placement of wood chips. The access path will be monitored for 25 months for erosion.



Manning Canyon Repaired Access Path

- **Interstate (I)-15 & Balboa** – Public Utilities has completed an ROF study which concluded that the most cost effective solution is to leave the sewer alignment in place. The process for the SCR submittal has begun, and will include the completion of a Biological Assessment and Historical Resource Report.

MAINTENANCE, MONITORING, AND MAPPING

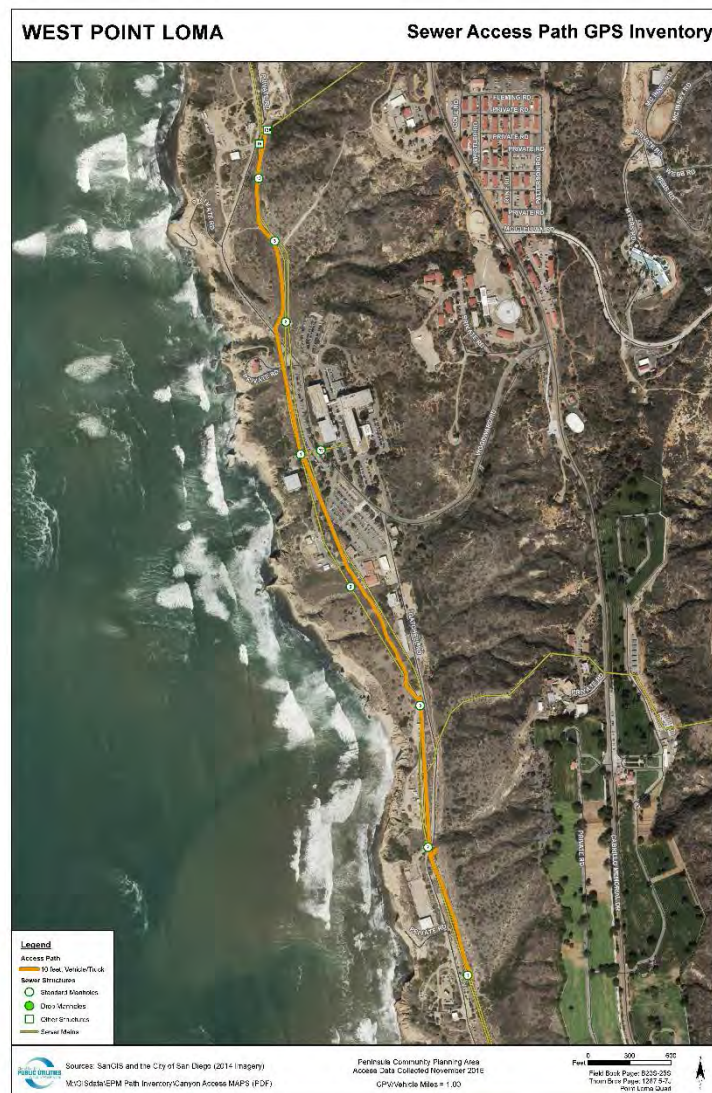
Wastewater Collection Division staff coordinated closely with Environmental Staff (Environmental Section) in ensuring daily activities were in compliance with the Program's master permit, agency permits, and environmental regulations.

Environmental training is provided to all Public Utilities staff working in canyons/environmentally sensitive areas. Crews are directed to contact staff in the Environmental Section for guidance and support for work that may impact sensitive resources.

The Environmental Section reviews daily field work reports, facilitates monthly meetings to discuss and review all work in canyons, obtains permits, and provides daily support to field crews. Work conducted in canyons/environmentally sensitive areas is monitored by the Environmental Section.

Bird nesting surveys, vegetation and sensitive species mapping, jurisdictional delineations and other biological surveys are completed by the Environmental Section for daily WWC operation and maintenance of sewer lines in canyons.

Public Utilities has increased its efforts to inventory and map existing access to sewers in canyons. This inventory provides information on existing access conditions, identifies access needs and areas of concern), and facilitates ongoing maintenance. To date, 163 miles of pedestrian and vehicular paths have been mapped with the GPS data for 137 canyon areas. Vehicle access path data is updated quarterly and is available on SanGIS.



Access Path Inventory Map for West Point Loma

CONSTRUCTION AND EMERGENCY PROJECTS

Below is a list of sewer emergency projects and/or pipeline/manhole repair projects that occurred in canyons or environmentally sensitive areas since July of 2015:

Emergency Projects

- Alvarado Court Exposed Pipe Emergency (Pipe Protection)
- Dove Canyon Pipe Encasement (Pipe Protection)
- Pump Station 45 Pipe Repair Emergency (Pipe Repair)
- Dakota Canyon Manholes Emergency (Manhole Protection)
- Murphy Creek MH 111 Emergency (Manhole Protection & Repair)
- Mission Center MH 101 Emergency Repairs (Manhole Protection & Access Path Repair)
- Lexington Pipe Encasement Emergency (Pipe Protection)
- Washington Creek Canyon Manhole 85 Emergency (Manhole Protection)
- Shawn Canyon Pipe Protection Emergency – Upper (Pipe Protection)
- Shawn Canyon Pipe Protection Emergency – FSN 32972 (Pipe Protection)
- Shawn Canyon Pipe Repair Emergency – FSN 32934 (Pipe Protection)
- Euclid and Menlo Sewer Break Emergency (Pipe Repair & Protection)
- Central Tecolote Sewer Break Emergency (Pipe Realignment)
- Manning Canyon Emergency CI Pipe Wrapping (Pipe Repair)

Other Construction Projects

- Murphy Canyon MH114 (Manhole Locate & Raise)
- 2484 Grove Avenue MH 288 (Manhole Locate & Raise)
- Mission Valley Canyon Lateral Repair (Pipe Replacement)
- 3723 Dwight Street Spot Repair (Pipe Repair)
- 4497 Revillo Dr Spot Repair (Pipe Repair)
- Meade Avenue Pipe Repair (Pipe Repair)
- Wightman Street Manhole 466 Lower (Manhole Repair)
- Otay Valley Manhole Improvements (Manhole Replacement – Managed by Public Works Department)

Public Utilities crews completed access path maintenance in multiple canyon areas to facilitate access for cleaning, inspections and maintenance. Path maintenance is usually limited to trimming or mowing vegetation that has grown on the pathways. Maintenance on the access path precedes manhole cleaning and maintenance.

Public Utilities staff manages emergency and non-CIP construction projects. Environmental review, monitoring, and reporting are done in adherence with the Program. Biological assessments have been prepared and permits have been obtained as necessary for these emergency and construction projects. Following construction, revegetation and/or restoration has been implemented in accordance with the Program.



Pump Station 45 Pipe Repair Emergency



Dakota Canyon Manhole Emergency

25 MONTH REVEGETATION AND RESTORATION PROJECTS

Conditions of the Master permit require effective erosion control of access paths and restoration of temporarily impacted areas outside of permanent access paths following construction. Each impact area is monitored and maintained for a period of no less than 25 months.

Revegetation sites include all areas required for permanent access to utilities including the access paths, turn-arounds, and work areas around manholes. When new access paths and permanent access areas are created, revegetation is required. The goal of revegetation is successful erosion control. Maintenance and monitoring of revegetation areas may include hydroseeding or hand-seeding, weeding, mulching or installing wood chips on the path, installation of temporary Best Management Practices (BMPs), site monitoring or a combination of the above treatments.

Restoration sites are areas impacted outside of permanent access areas. Restoration areas are typically staging areas, emergency access or work areas, pipeline repair areas, unauthorized impact areas, or areas disturbed as a result of temporary widening of pathways. The goal of habitat restoration is re-establishment of native habitat. Restoration areas shall obtain native plant coverage equal to the native species present in the adjacent area or 30% coverage, whichever is greater. Restoration areas shall support no more than 1% perennial weeds and no more than 10% annual weeds during the 25 month maintenance period. Maintenance and monitoring of restoration areas may include hydroseeding or hand-seeding, installation of container plants, weeding, installation of temporary BMPs, temporary irrigation, site monitoring or a combination of the above treatments.

Seed and plant material used for revegetation and restoration efforts is from locations within 25 miles of the coastline in San Diego County. Maintenance and monitoring of all sites continues for 25 months or until successful erosion control is achieved on the paths and/or restoration goals are met outside of the paths.

During this reporting year, nine (9) sewer revegetation projects were completed. In addition to ten (10) ongoing projects, eight (8) additional sites were installed and maintenance and monitoring of these sites was initiated.

Updates on the status of the revegetation and restoration projects are a regular agenda item at OSCAC's meetings. See Attachment A for the July 2016 Revegetation and Restoration Projects Status update table.



Central Tecolote Sewer Break Emergency Restoration Area



Pump Station 77 Force Main Restoration

MITIGATION PROJECTS

In accordance with applicable local, state, and federal regulations, restoration, revegetation, or mitigation is required for significant biological impacts resulting from the Program, such as the creation of access paths through environmentally sensitive areas, emergency repairs, and pipeline repair projects. In order to mitigate these impacts, Public Utilities staff has identified and implemented a number of habitat mitigation projects located within various watersheds where past, current, or future impacts have or may occur. These mitigation sites are designed and built to accommodate numerous Public Utilities projects. Allocation of mitigation is completed as each project is planned, permitted and constructed. Post construction adjustments are made to mitigation assignments based on actual project impacts. Project impacts and mitigation assignments are tracked internally within the Canyon Database. A summary of acreages available, acreages assigned, and the balance is included as Attachment B. A more detailed summary of assignments is included as Attachment C.

The location of these projects is shown in Figure 1. The status of each habitat mitigation project is summarized below.



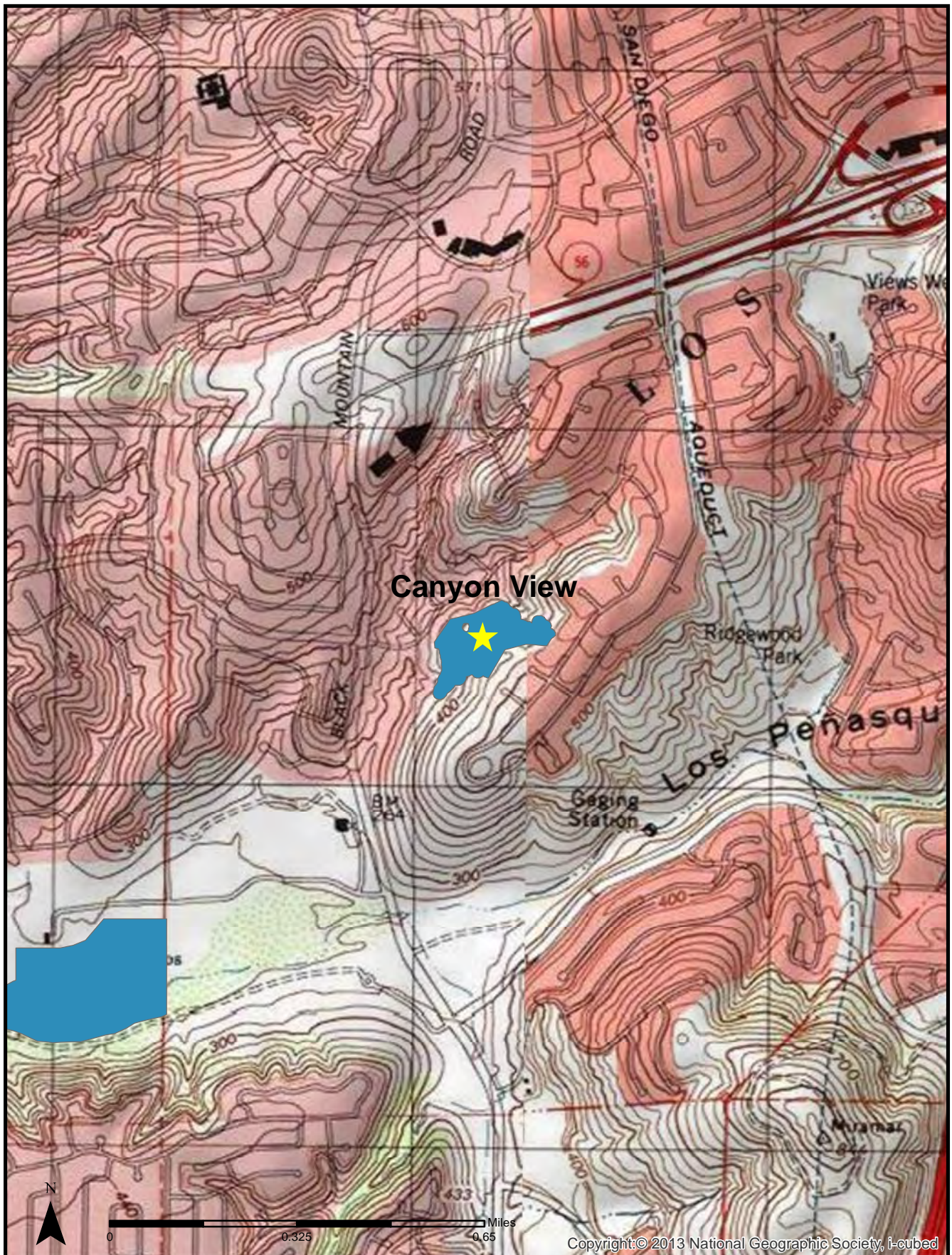
Figure 1
Mitigation Sites
Overview Map

Canyon View Upland Restoration Mitigation Project

Construction began in September 2011 for this project, located east of Black Mountain Road and south of Adolphia Street in Los Penasquitos Canyon (Figure 2). The project involves the restoration of approximately 0.9 acres of native grassland and 6.49 acres of Diegan coastal sage scrub habitat, located on City of San Diego owned parcels within Los Penasquitos Canyon. The project serves to mitigate impacts associated with Public Utilities projects located in Los Penasquitos Canyon Preserve. At the end of Year 3 both upland vegetation communities had met or exceeded the success criteria milestones for species richness, native species cover, non-native species cover, and target invasive species cover that had been established for that year. During Year 3 a native annual seed mix was installed in the Weed Maintenance Buffer Area to help stabilize soils and preclude non-native species from becoming established. The project's supplemental watering has been eliminated (Year's 4 and 5) in order to provide evidence that the vegetation is self-sufficient. Coastal California gnatcatchers (*Poliophtila californica californica*) have been observed foraging onsite within the Diegan coastal sage scrub habitat during Year 3 monitoring. The site is currently in year 4 of the 5 year maintenance and monitoring period. The site will be maintained and monitored for the 5-year period until agency sign off. The goal of the project is to restore low quality non-native uplands into high quality native habitats.

Mitigation Credits			
Habitat Type	Acres	Assigned	Balance
Diegan Coastal Sage Scrub (Tier II)	6.49	1.64	4.85
Native Grassland (Tier I)	0.89	0.02	0.87





Central Tecolote Enhancement Mitigation Project

This project is currently in year 5 of the 5-year maintenance and monitoring period. This project is located south of Balboa Avenue and north of Mt. Acadia Boulevard in Tecolote Canyon (Figure 3). The project consists of riparian enhancement and native grassland/coastal sage scrub restoration in addition to a weed management area that encompasses all of Tecolote Creek from Balboa Avenue to Mt Acadia.

Exotic species removed from the site include: Brazilian pepper tree, pampas grass, Mexican fan palm, Canary Island date palm, eucalyptus, fennel (*Foeniculum vulgare*), mustard, and yellow sweetclover (*Melilotus indicus*). Maintenance activities completed this year include weed and trash removal, , cutting installation, additional seeding, and site protection repair. Restoration areas were mapped with a GPS unit to more accurately reflect the areas being restored.

The site is doing very well with very few exotic species observed during monitoring visits. Restoration areas are exhibiting dense native vegetative growth. Coastal California gnatcatchers have been observed foraging onsite within the Diegan coastal sage scrub habitat. The irrigation system has been turned off and the site is no longer being watered. During an El Nino rain event this year, a section of the Tecolote Trunk Sewer collapsed resulting in a sewer spill. Response activities and permanent re-routing of the sewer line out of Tecolote Creek resulted in impacts to the mitigation site. Minor reductions in mitigation acreage occurred as a result of the emergency.

Mitigation Credits			
Habitat Type	Acres	Assigned	Balance
Oak Riparian Forest (Enhancement)	8.06	1.79	6.27
Diegan Coastal Sage Scrub (Tier II)	2.08	0.62	1.46
Native Grassland (Tier I)	1.64	0.10	1.54





Figure 3
Central Tecolote Mitigation Site
Vicinity Map

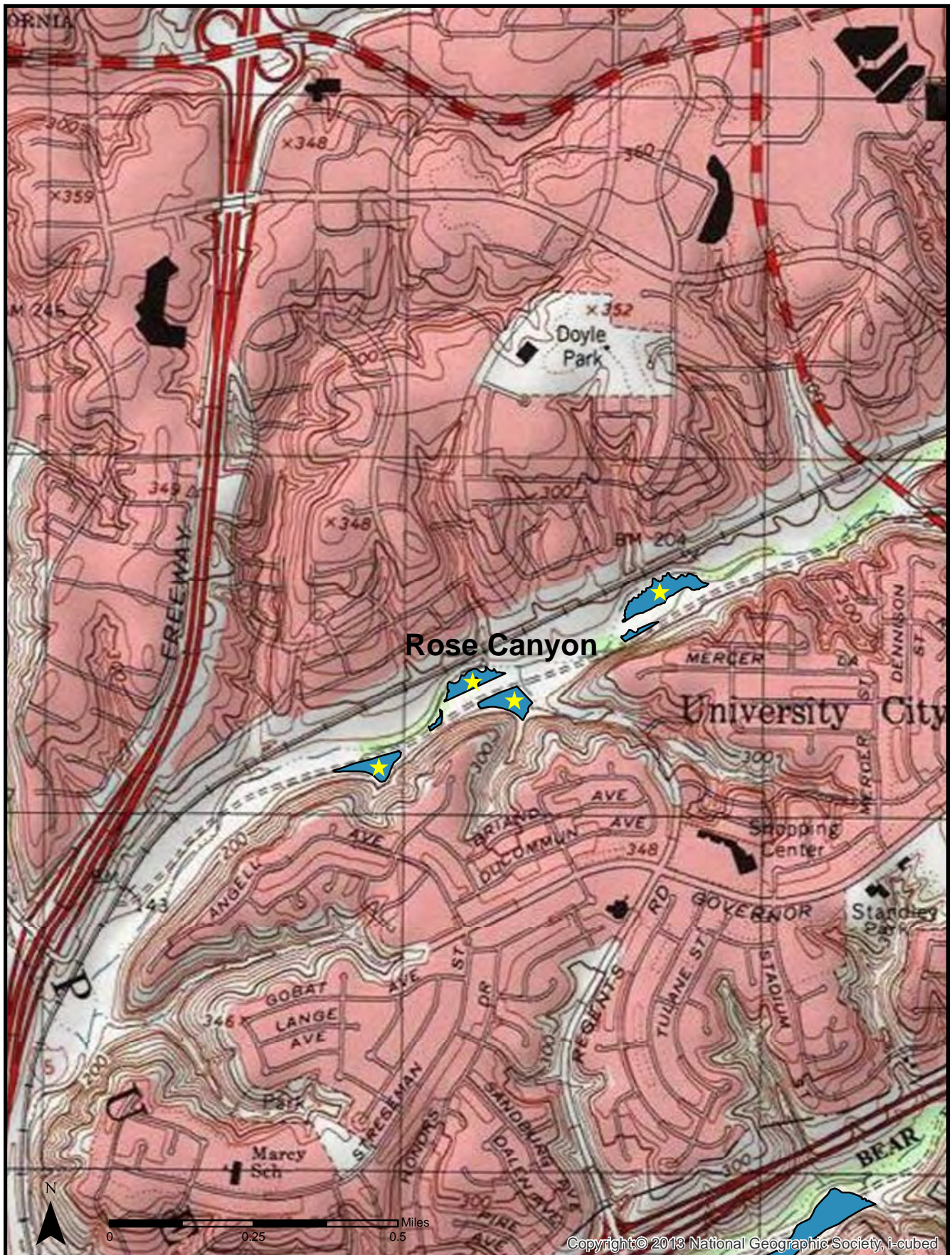
Rose Canyon Mitigation Project

The Rose Canyon Mitigation Project is located in the Rose Canyon Open Space Park, starting approximately one half mile west of Genesee Avenue and continuing another one half mile further west into the park (Figure 4). Approximately 5 acres of oak riparian forest, southern cottonwood-willow riparian forest, and mule fat scrub were created adjacent to Rose Creek with 0.61 acre of riparian enhancement. Approximately 4.75 acres of Diegan coastal sage scrub habitat was restored on the upland areas.



Construction was initiated in September 2007 and included clearing of non-native vegetation, grading, installation of a temporary irrigation system, planting, hydroseeding, fencing, and sign installation. The project entered the 5-year maintenance period on July 15, 2008. The project has completed seven years of maintenance and is awaiting Corps regulatory sign-off. Vegetative cover at the site is very high, uplands habitat exceeds 90% cover and has a high diversity of species that includes California sagebrush (*Artimisia californica*), white sage (*Salvia apiana*), coyote bush (*Baccharis pilularis*), and San Diego goldenbush (*Isocoma menziessii*). The wetland creation habitat exceeds 100% cover in some sections of the project area with canopy height reaching 20 to 25 feet; a number of cottonwood (*Populus* spp.) and willow (*Salix* spp.) saplings were observed on the site. Drift deposits and the development of sand bars were observed throughout the wetland enhancement areas indicating wetland hydrology was present. The native grassland habitat continues to do well, with increased coverage of purple needlegrass (*Stipa pulchra*) and beardless wild rye (*Elymus triticoides*). The site will continue to receive maintenance on a semi-annual to quarterly basis to help ensure native habitat continues to increase in maturity and spatial coverage. Available mitigation acreage below reflects actual acreage of habitats restored at the end of the year 5 maintenance period.

Mitigation Credits			
Habitat Type	Acres	Assigned	Balance
Riparian Forest (Creation)	5.05	3.23	1.82
Riparian Forest (Enhancement)	0.61	0.55	0.06
Diegan Coastal Sage Scrub (Tier II)	4.75	2.16	2.59
Native Grassland (Tier I)	0.28	0.09	0.19



San Clemente Canyon Mitigation Project

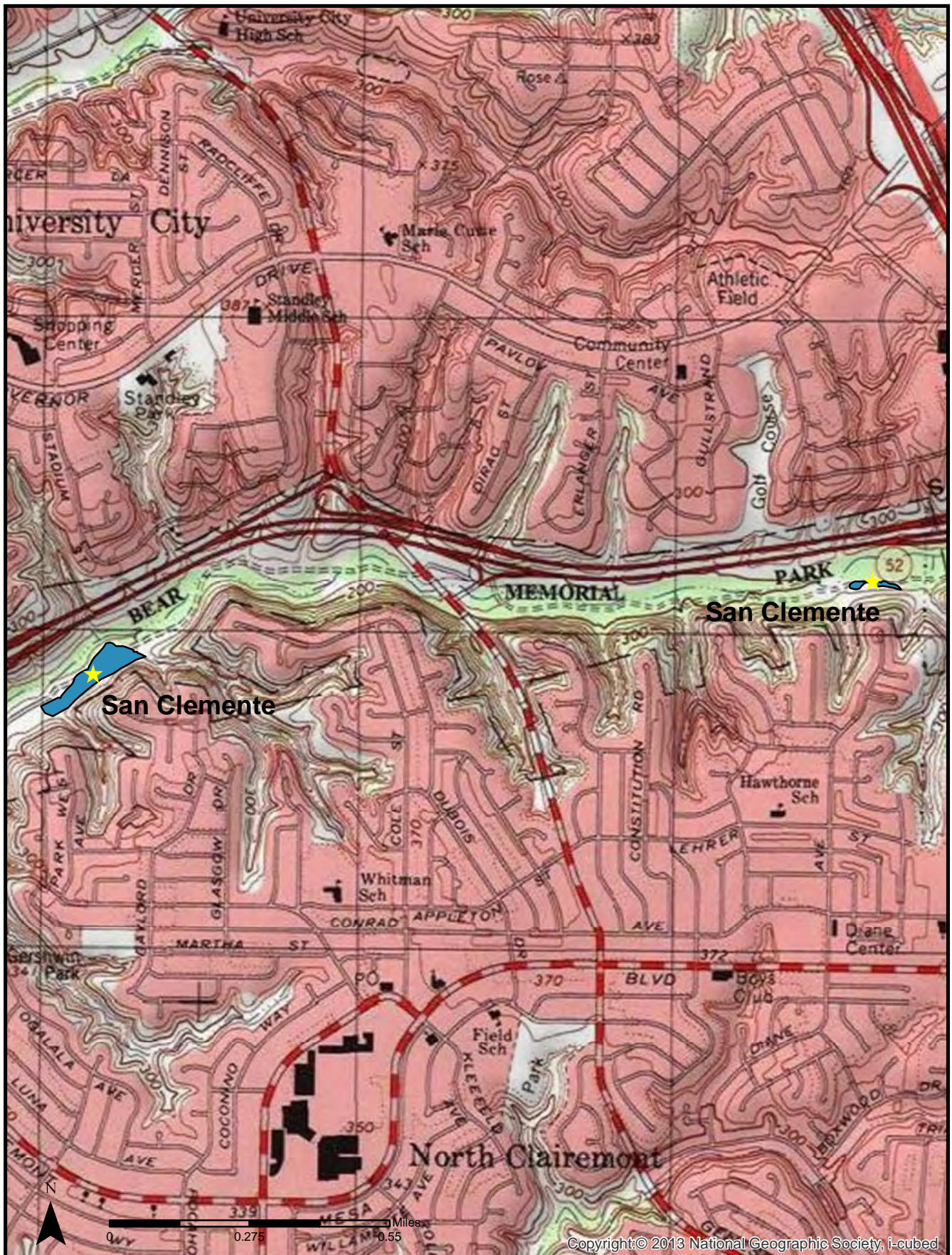
The San Clemente Canyon Mitigation Project provides mitigation for impacts associated with Public Utilities projects within San Clemente Canyon/Marian Bear Memorial Park and surrounding watershed. The project is located at two sites within the park, one just east of the Regents East parking area and the other approximately three-fourths of a mile east of the Genesee parking area (Figure 5).



The project includes the creation of 2.86 acres of wetland habitat (southern willow riparian forest, streambed and emergent wetland) and 2.81 acres upland habitat (Diegan coastal sage scrub and oak woodland).

Construction was initiated in October 2007. The site reached its 5-year maintenance and monitoring period in September 2013 and received regulatory sign-off from the Army Corps of Engineers (ACOE) in January 2015. The upland and wetland planting areas for the project have shown steady establishment of target species with vegetative cover in portions of the wetland habitat over 100% cover. The wetlands support a willow over story and a well-developed understory including species such as California rose (*Rosa californica*) and San Diego marsh elder (*Iva hayesiana*). The site will continue to receive maintenance on a semi-annual to quarterly basis to help ensure native habitat continues to increase in maturity and spatial coverage. Available mitigation acreage below reflects actual acreage of habitats restored at the end of the year 5 maintenance period and rounded totals of assignments to date.

Mitigation Credits			
Habitat Type	Acres	Assigned	Balance
Streambed (Creation)	0.02	0.01	0.01
Emergent Wetland (Creation)	0.20	0	0.20
Riparian Forest (Creation)	2.64	1.99	0.65
Diegan Coastal Sage Scrub (Tier II)	2.42	1.56	0.86
Oak Woodland (Tier I)	0.39	0.19	0.20



Copyright © 2013 National Geographic Society, i-cubed

Rancho Mission Canyon Wetland Enhancement Project

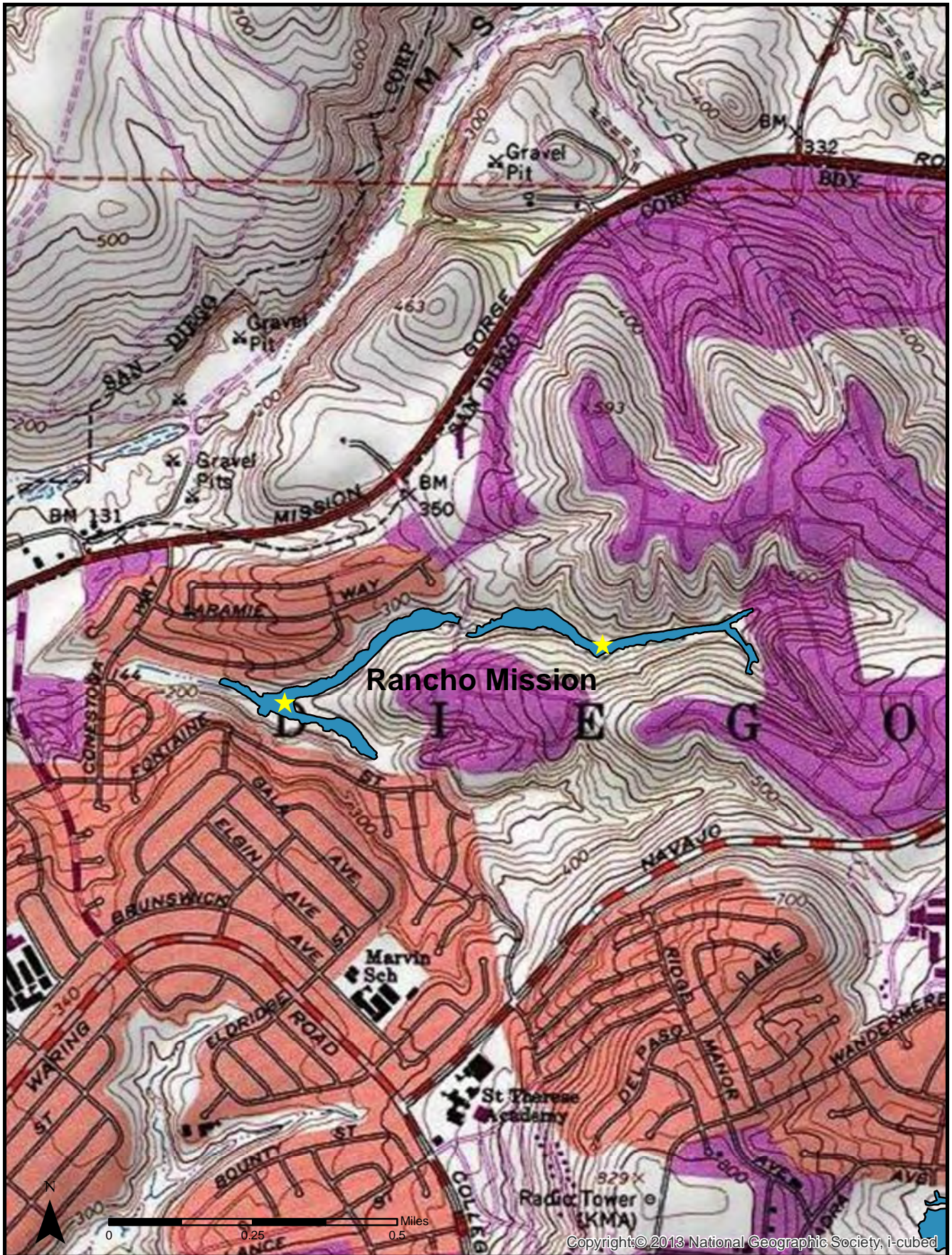
The Rancho Mission Canyon Wetland Enhancement Project is located in the City's Rancho Mission Canyon Open Space Park, south of Mission Gorge Road, north of Navajo Road, and on either side of Margerum Way in the Allied Gardens Community of the Navajo Community Planning Area (Figure 6).

The Rancho Mission Canyon Project includes the enhancement of 7.59 acres of wetlands and restoration of 1.53 acres (75% mitigation credit) of wetland transitional habitats. Non-native vegetation was removed from the canyon, followed by revegetation with native southern willow scrub and wetland transitional species. The total area of habitat enhancement runs the entire canyon bottom and encompasses more than 13.5 acres. Exotic species targeted for eradication include: salt cedar (*Tamarix* sp.), myoporum (*Myoporum laetum*), Brazilian pepper tree, pampas grass, Mexican fan palm, and eucalyptus.

The site completed the 5-year long-term maintenance and monitoring period in March 2013. The site currently supports target native cover of approximately 100%, exceeding the year 5 goal of 90%. Regulatory sign-off and approval for the project was received in the summer of 2013. The site is continuing to mature with dense thickets of vegetation found throughout the riparian corridor. Trees within the site continue to mature with some individuals exceeding 30 feet in height, and the understory is well developed with a diverse variety of herbs and shrubs. Very few non-native species were observed throughout the site, non-native species will continue to be treated as part of long term management of the site.

Mitigation Credits			
Habitat Type	Acres	Assigned	Balance
Southern Willow Scrub (Enhancement)	8.74	2.13	6.61





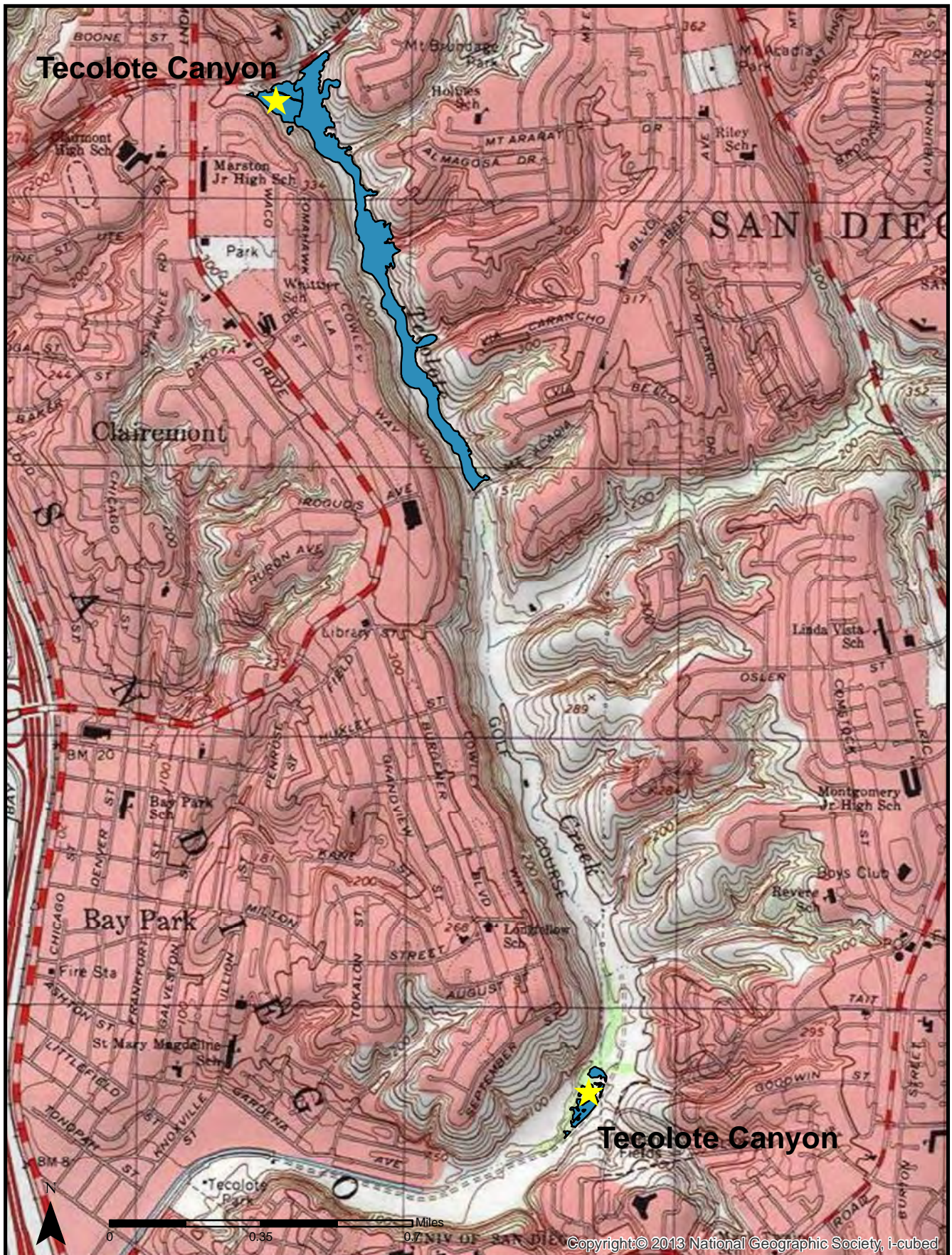
Tecolote Canyon Mitigation Project

The Tecolote Canyon Mitigation Project provides mitigation for impacts associated with projects within Tecolote, Mt. Elbrus, East Clairemont, and Manning Canyons. The Balboa site is located south of Balboa Avenue, and the Grove site is located south of the Tecolote Golf Course and north of the University of San Diego (Figure 7).

The project includes the creation of 1.61 acres of wetland habitat (southern willow scrub, southern cottonwood willow riparian forest, and oak riparian forest) and restoration of 3.37 acres upland habitat (Diegan coastal sage scrub & native grassland). Construction was initiated in February 2007 and the 5-year maintenance and monitoring period began in January 2008. The 5-year success criteria of 80% coverage of wetland vegetation transects has been met and 75% coverage of upland vegetation transects has been exceeded for the project. The site completed its 5-year maintenance and monitoring in the early part of 2013 and has received regulatory sign-off. A qualitative review of the site in spring of 2016 estimated vegetative cover to be approximately 90-100% in the Diegan coastal sage scrub habitats, and 75-100% in the riparian areas. Numerous bird species were observed within the site during the annual assessment including a pair of nesting California gnatcatchers.

Mitigation Credits			
Habitat Type	Acres	Assigned	Balance
Riparian Forest (Creation)	1.19	0.69	0.51
Southern Willow Scrub (Creation)	0.42	0.39	0.03
Diegan Coastal Sage Scrub (Tier II)	3.30	3.05	0.25
Native Grassland (Tier I)	0.07	0.06	0.01





San Diego River Wetland Creation Project

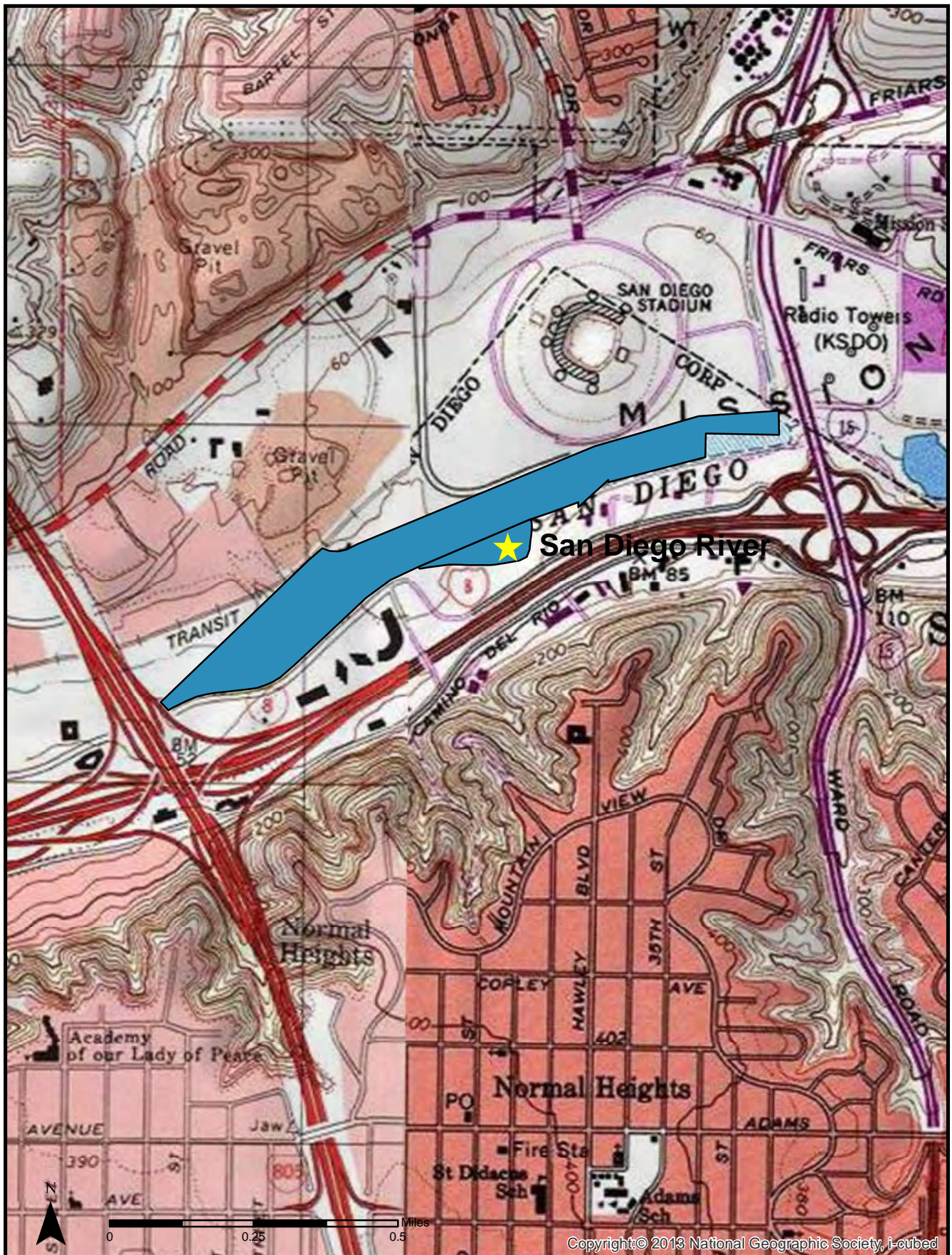
The San Diego River Wetland Creation Project is located on a Public Utilities owned parcel located immediately adjacent to the San Diego River, north of Camino Del Rio North, west of I-15, and east of Mission Center Parkway in the Mission Valley Community of the City of San Diego (Figure 8).

The site includes the creation of 3.43 acres of native riparian habitat and approximately 2 acres of Diegan coastal sage scrub habitat. The project site was graded in the fall of 2005 to create a basin along the southern bank of the San Diego River. The long-term maintenance, monitoring, and reporting program started June 14,



2006 and the site successfully completed 5-years of maintenance and monitoring in June of 2011. Native vegetation at the site continues to mature with trees reaching heights of 25-30 feet, and total vegetative cover approaching 100%. The site supports a well-developed understory of juncus (*Juncus* spp.), rose, and mulefat (*Baccharis salicifolia*). Non-native annuals, primarily sweet clover, were observed sporadically throughout the site, with the highest concentrations occurring on the western end. As part of long term management of the site, the site will continue to receive semi-annual to quarterly maintenance to remove non-native species and help ensure native habitat continues to mature and increase in spatial coverage. Trash from nearby illegal encampments continues to be removed from the site and adjacent areas, the City continues to remove encampments from the area as they are identified. During the 2016 site assessment a number of songbirds and animal tracks were observed within the site. The most notable observation was the identification of two Least Bell's vireo (*Vireo bellii pusillus*) territories within the site, with one territory confirmed to be nesting within the site.

Mitigation Credits			
Habitat Type	Acres	Assigned	Balance
Riparian Forest (Creation)	3.43	2.23	1.20



Copyright: © 2013 National Geographic Society, i-cubed

Los Peñasquitos North Wetland Creation Project

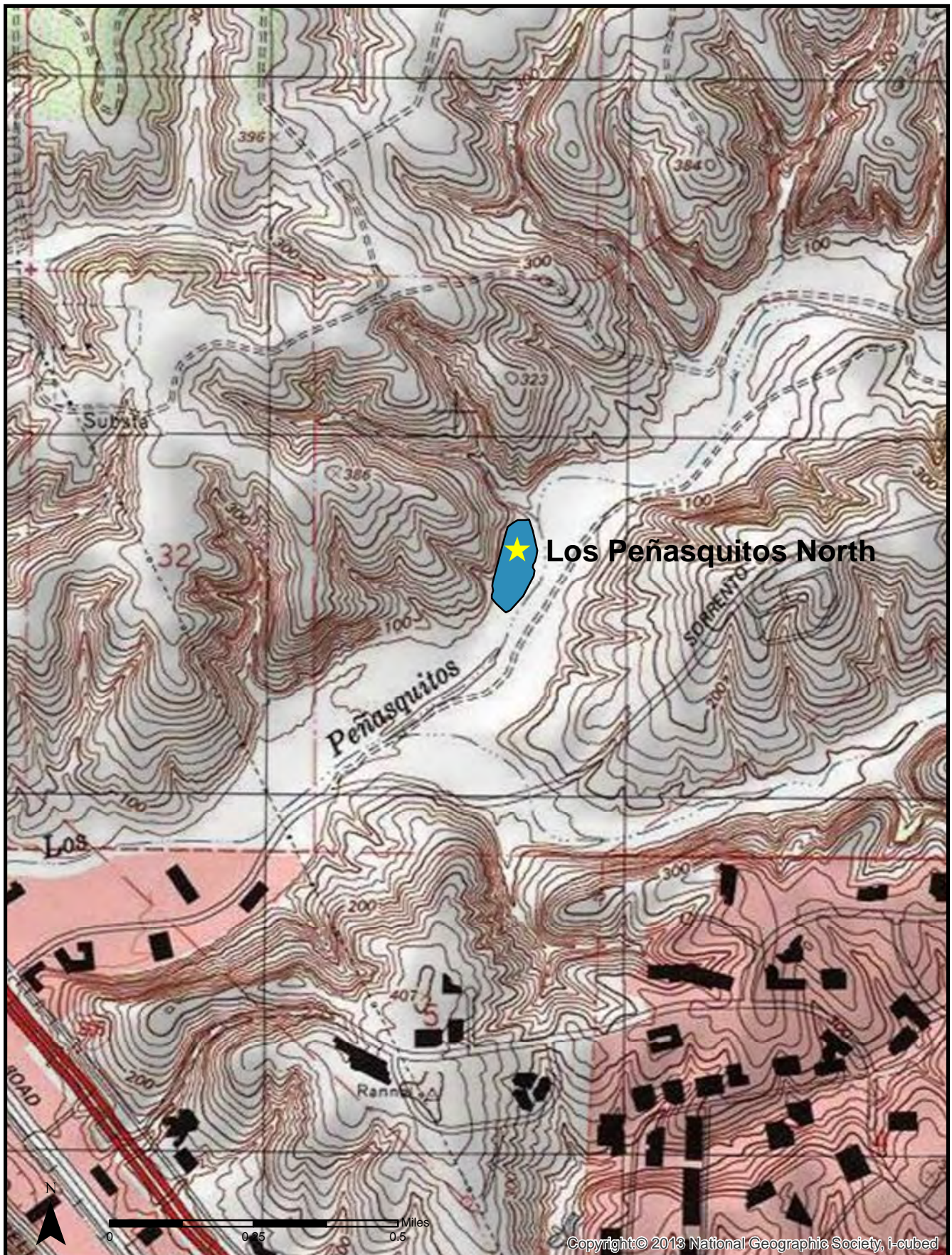
The Los Peñasquitos North Wetland Creation Project is located in the City of San Diego's Los Peñasquitos Canyon Preserve in the community of Peñasquitos, just north of the Los Peñasquitos Creek (Figure 9).



The project includes the creation of 3.8 acres of wetland habitat, including 3.15 acres of southern willow scrub, 0.43 acres of cottonwood/sycamore woodland, and 0.22 acres of freshwater marsh. The site also includes one acre of Diegan coastal sage scrub habitat to serve as a buffer on the north edge of the site. Regulatory sign-off and approval for the project was received in the spring of 2012.

The site was assessed in May 2016 and appeared in good condition. Evidence of high water flows through the site were observed with the presence of debris and a well-defined rack line. This year a number of willow and cottonwood saplings were observed throughout the site. The site continues to mature with vegetative cover approaching 100% and willows reaching heights of 20 to 30 feet. No trash or debris or unauthorized trails were observed onsite. The site meets the 5th year success standard with over 90% target vegetative cover. Vegetation within the wetland habitat is predominately spiny rush (*Juncus acutus*), deer grass (*Muhlenbergia rigens*) and various species of willows. With increased rain this year, non-native annual weeds, primarily sweet clover, have increased in coverage compared with previous years. Non-native vegetation will be treated and removed from the site throughout the year as part of long term monitoring and maintenance.

Mitigation Credits			
Habitat Type	Acres	Assigned	Balance
Freshwater Marsh (Creation)	0.22	0.22	0
Riparian Woodland (Creation)	0.43	0.43	0
Southern Willow Scrub (Creation)	3.15	2.95	0.2
Diegan Coastal Sage Scrub (Tier II)	1.03	1.03	0



Lake Murray Mitigation Project

The Lake Murray Mitigation Project is in the City of San Diego's Mission Trails Regional Park. It is located in the area just west of Lake Murray in the Del Cerro neighborhood of the Navajo Community (Figure 10). The mitigation site includes 2.5 acres of wetland enhancement (southern willow scrub habitat) and just over 5.2 acres of upland restoration area (Diegan coastal sage scrub). Official sign-off was received from all of the regulatory agencies by December 2011.

The annual assessment survey was conducted May 13, 2016 to assess the current condition of the mitigation site. Fifth year success criteria required an average combined cover of 90% for the upland restoration and wetland enhancement areas. The wetland enhancement area exceeds 100% native cover throughout most of the defined enhancement site. The wetland over story continues to mature, increasing in density and height with species such as Fremont cottonwood (*Populus fremontii*), Western sycamore (*Platanus racemosa*), and various types of willows reaching heights of 35 feet or more. The understory is diverse with species such as spiny rush, spike sedge (*Carex nardina*) evening primrose (*Oenothera elata*), San Diego marsh elder, and broad-leaved cattail (*Typha latifolia*). The upland restoration site has a mixture of Diegan coastal sage scrub and non-native grasslands. Species found within the Diegan coastal sage scrub include California sagebrush, lemonade berry (*Rhus integrifolia*), flattop buckwheat (*Erigonium fasciculatum*), laurel sumac (*Malosoma laurina*), fascicled tarweed (*Hemizonia fasciculata*), coast prickly-pear (*Opuntia littoralis*), and black sage (*Salvia mellifera*). Numerous bird species were observed throughout the site including multiple coveys of California quail (*Callipepla californica*).

Mitigation Credits			
Habitat Type	Acres	Assigned	Balance
Southern Willow Scrub (Enhancement)	2.5	1.57	0.93
Diegan Coastal Sage Scrub (Tier II)	5.2	4.89	0.31



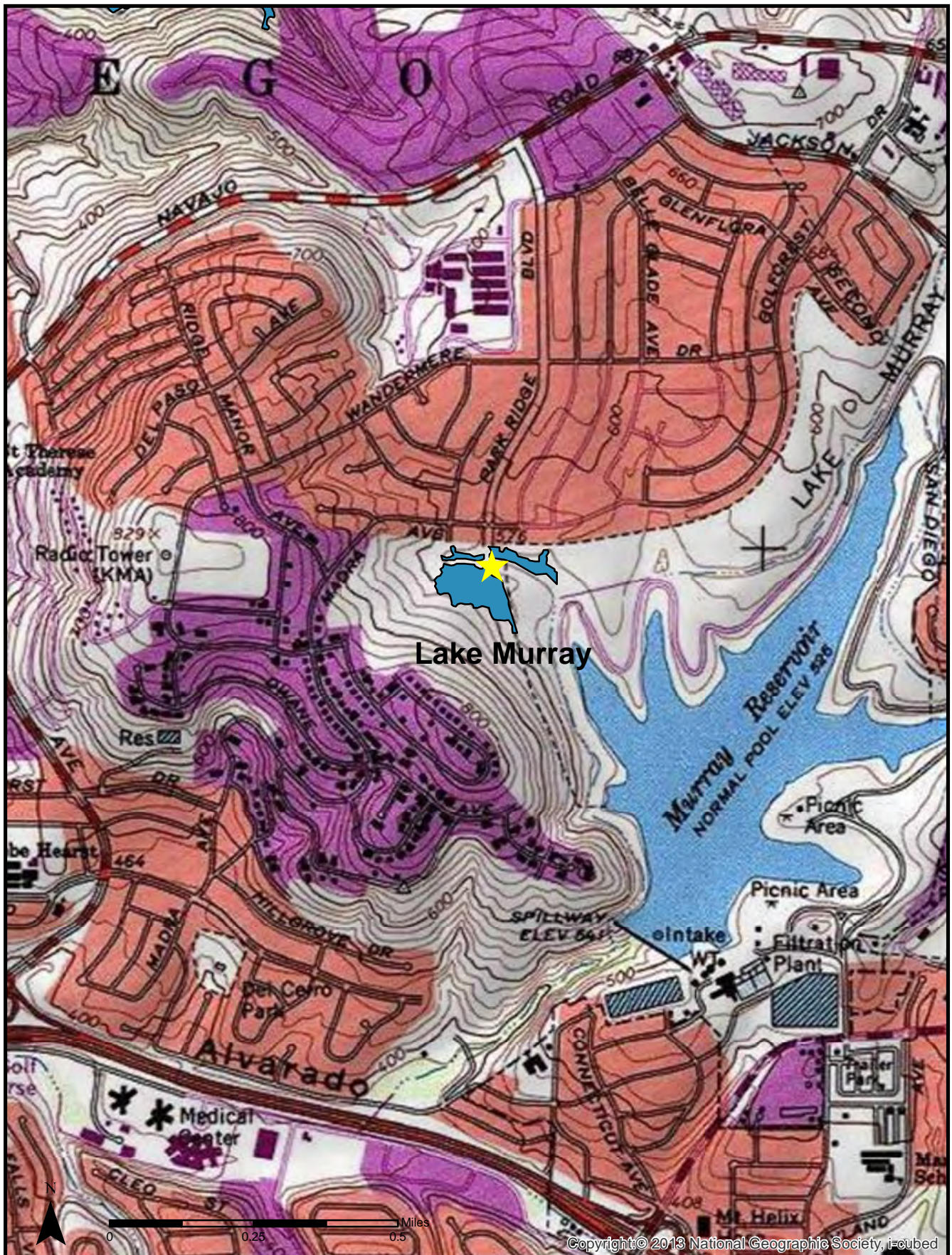


Figure 10

Lake Murray Mitigation Site
Vicinity Map

El Rancho Peñasquitos Wetland Enhancement Project

The mitigation site is located along Los Peñasquitos Canyon approximately 0.5 mile west of Black Mountain Road in the vicinity of the historically designated Johnson Taylor Adobe of Rancho de los Peñasquitos (City of San Diego HRB Site #75). The site is within the MHPA on County and City of San Diego Open Space Land.

The El Rancho Project included enhancement of 5.53 acres of southern cottonwood willow riparian forest, by eradicating targeted non-native species. Project efforts began March 26, 2006 and regulatory sign-off was received in early 2010. This project treated 6,720 non-native plants, targeted species included Canary Island date palm, Mexican Fan Palm, Eucalyptus, Peruvian pepper tree (*Schinus terebinthifolius*), Brazilian pepper tree, and edible fig (*Ficus carica*).

The El Rancho Peñasquitos Wetland Enhancement Project has met the success criteria outlined in the Conceptual Mitigation Plan. Many of the larger treated plants have begun to deteriorate and decompose, allowing for the establishment of native species in their direct vicinity. Park and Recreation has taken over long term management of the site and manages the land consistent with the Multiple Species Conservation Plan which includes targeting the treatment or removal of invasive exotics as part of routine park management. During the 2016 assessment, no target exotic species were identified within the site.

Mitigation Credits			
Habitat Type	Acres	Assigned	Balance
Riparian Forest (Enhancement)	5.53	4.67	0.85





Otay Mesa Upland Mitigation Bank

The Otay Mesa Mitigation Bank is located in the Otay Mesa community of the City of San Diego and occurs within the MHPA. The mitigation site is located on undeveloped land that is surrounded by other City of San Diego Park and Recreation Open Space lands and federal land holdings along the U.S /Mexico border. Five habitat types are found onsite and include maritime succulent scrub, non-native grasslands, ruderal, disturbed habitat, and vernal pool. During the 2016 annual monitoring visit it was documented that all of the fencing installed in February 2014 was intact and functioning as intended. Areas where fencing had been installed and dirt roads closed exhibited new growth consisting of *Erodium* sp., *Bromus* sp., and *Avena barbata*. Additional fencing was installed by Border Patrol on federally owned land to prevent access to the mitigation site and further reduce unauthorized off-road vehicle activity.

Sensitive plant species present onsite include San Diego button-celery (*Eryngium aristulatum* var. *parishii*), variegated dudleya (*Dudleya variegata*), snake cholla (*Opuntia parryi serpentina*), San Diego barrel cactus (*Ferocactus viridescens*), San Diego bur-sage (*Ambrosia chenopodiifolia*), south coast saltbush (*Atriplex pacifica*), and San Diego county viguiera (*Viguiera laciniata*). Notable birds species observed in 2016 within the site include two pairs of coastal California gnatcatcher. Notable animal species observed include black tailed jackrabbit (*Lepus californicus*) and orange-throated whiptail (*Aspidoscelis hyperythra*).

Mitigation Credits			
Habitat Type	Acres	Assigned	Balance
Maritime Succulent Scrub (Tier I)	45.43	33.92	11.51





Copyright © 2013 National Geographic Society, i-cubed

Stadium Wetland Mitigation Project

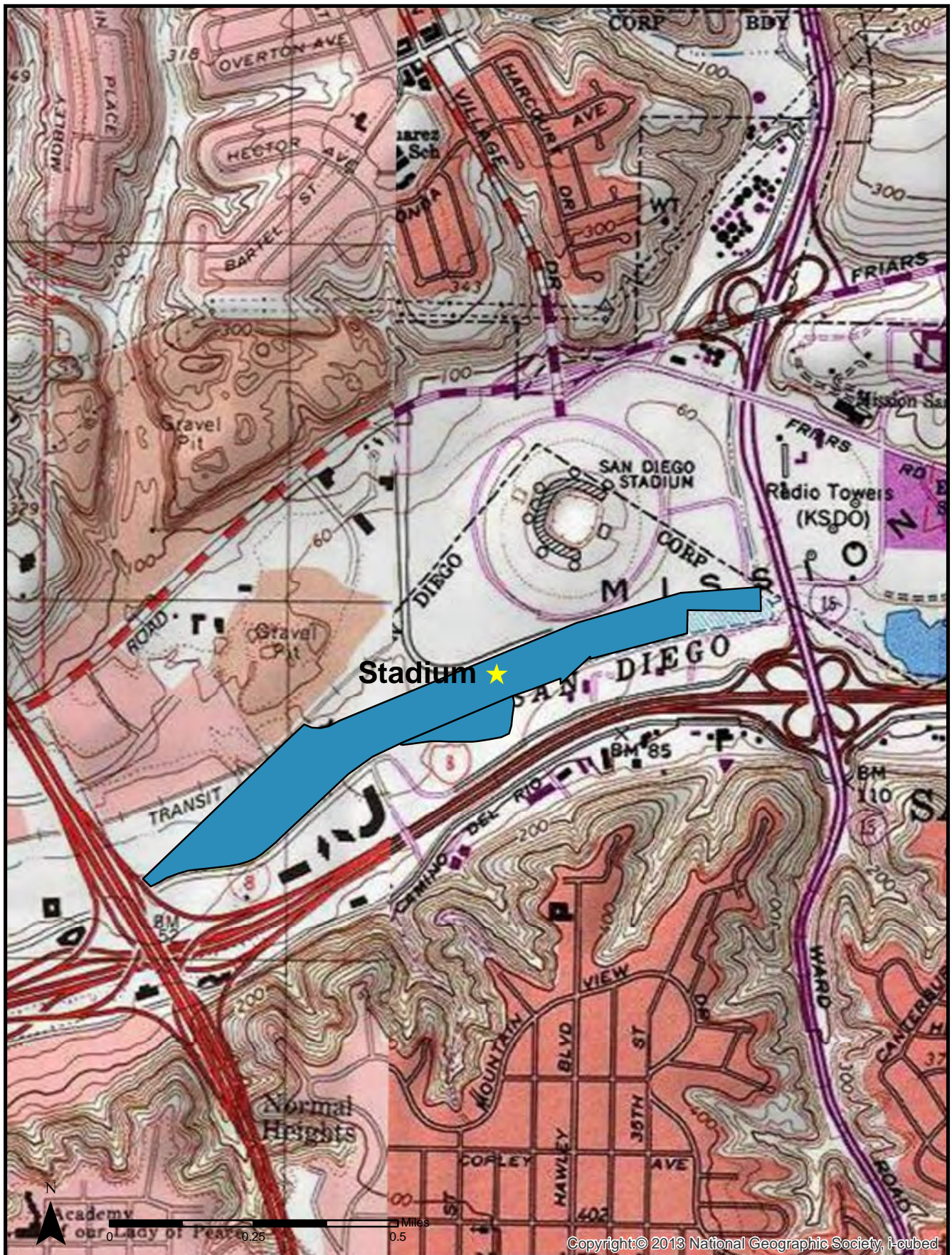
A conceptual mitigation plan has been prepared for this project and approved by the resource agencies. Work at the site is scheduled to begin in the fall of 2016.

The Stadium Wetland Mitigation Project is located within the floodplain of the San Diego River between I-15 and I-805. The site is approximately 57 acres and currently dominated by a high number of non-native species including giant reed (*Arrundo donax*), Peruvian pepper tree, Brazilian pepper tree, pampas grass, Canary Island date palm, eucalyptus. This project will restore native habitat to the area by removing targeted non-native species, installing native plants, and maintaining and monitoring the site for a minimum of 5-years.

This site has the potential to provide high quality habitat for a number of regionally sensitive species including least Bell's Vireo, southwestern willow flycatcher (*Empidonax traillii extimus*), western pond turtle (*Actinemys marmorata*), yellow billed cuckoo (*Coccyzus americanus*), and two-striped garter snake (*Thamnophis hammondi*), and also improve water quality, and functionality of the San Diego River.



Stadium Wetland Mitigation Project Site



ATTACHMENT A
25 MONTH REVEGETATION AND RESTORATION PROJECTS STATUS TABLE



**Canyon Restoration/Revegetation Projects (2012-2016)
July 2016**

Active Projects

Canyon/ Project	Reveg or Restoration*	Size (acre)	Start of 25 Months	Seeding Date	Planting Date	End of 25 Months	PM	Status
Mission Gorge Pipe Protection	Restoration	0.07	11/1/2013	N/A	N/A	12/1/2015	Balo	Extending monitoring period 6 months
Washington Creek Path Maint	Revegetation	0.037	5/27/2014	2/2/2015	N/A	6/27/2016	Lavan	25 Month Monitoring
Manzanita Water Break II (Water)	Restoration	0.05	6/19/2014	7/8/2014	6/19/2014	7/19/2016	Paver	25 Month Maintenance and Monitoring
Poe Street Pipe Repair	Revegetation	0.01	9/12/2014	9/12/2014	N/A	10/12/2016	Paver	25 Month Monitoring
Tecolote Golf Course Water Pipe Repair	Restoration	<0.01	10/1/2014	N/A	N/A	11/1/2016	Paver	25 Month Monitoring
8 th Ave Sewer Pipe Repair	Revegetation	<0.001	10/29/2014	N/A	N/A	11/29/2016	Paver	25 Month Monitoring
Three Waters Inspection (Water)	Restoration	0.03	11/6/2014	9/17/2014	11/6/2014	12/6/2016	Adleberg	25 Month Maintenance and Monitoring
Conquistador Water Break (Water)	Restoration	0.03	11/20/2014	11/20/2014	N/A	12/20/2016	Paver	25 Month Monitoring
Fairway Spot Repairs- La Jolla	Revegetation	<0.01	1/1/2015	N/A	N/A	2/1/2017	Paver	25 Month Monitoring
Buchanan Emergency	Reveg/Rest	0.8	1/12/2015	2/2014	1/2015	2/12/2017	Adleberg	25 Month Maintenance and Monitoring
Nobel Drive MH 97	Revegetation	0.004	2/27/2015	N/A	N/A	3/27/2017	Paver	25 Month Monitoring
West SD River Sewer Abandonment	Restoration	0.01	2/27/2015	2/27/2015	2/27/2015	3/27/2017	Balo	25 Month Maintenance and Monitoring
Shepherd Canyon Water Emerg (Water)	Restoration	0.057	3/6/2015	2/27/2015	3/6/2015	4/6/2017	Smith	25 Month Maintenance and Monitoring
Manzanita Break III (Water)	Restoration	0.02	2/13/2015	11/2/2015	N/A	3/13/2017	Paver	25 Month Monitoring
Sonico Spot Repair	Revegetation	0.02	5/21/15	5/21/15	N/A	6/21/17	Smith	25 Month Monitoring
Potomac Water Break (Water)	Revegetation	0.03	6/02/2015	TBD6/02/15	N/A	7/02/2017	Smith	25 Month Monitoring
South Chollas	Reveg/Rest	0.4	8/1/15	3/2016	1/7/2016	8/1/17	Tran	3 of 3 phases constructed. Contract with restoration (Merkel & Associates, Inc.)
East Shepherd Emergency (Water)	Restoration	<0.01	8/9/2015	10/30/2015	N/A	9/9//2017	Paver	25 Month Monitoring
Emerald Hill Stand Pipe (Water)	Revegetation	0.3	8/20/2015	4/20/2015	N/A	9/20/2017	Paver	25 Month Monitoring
Murphy Canyon MH114	Revegetation	0.03	8/27/2015	N/A	N/A	9/27/2017	Paver	25 Month Monitoring
10325 Roselle Street Emergency (Water)	Revegetation	0.02	10/2015	TBD	N/A	11/2017	Adleberg	25 Month Monitoring
4497 Revillo Drive Sewer Repair	Revegetation	0.03	7/28/2015	7/28/2015	N/A	8/28/2017	Smith	25 Month Monitoring
4th Ave. & Quince St. (Water)	Revegetation	0.01	8/24/2015	N/A	N/A	9/24/2017	Smith	25 Month Monitoring
PS 45 Emergency	Restoration	<0.01	11/16/2015	11/16/2015	N/A	12/16/2017	Paver	25 Month Monitoring
Alvarado Ct Sewer Emergency	Restoration	<0.01	2/27/2016	2/27/2016	N/A	3/27/2018	Balo	25 Month Monitoring
El Camino South	Revegetation	<0.01	1/2016	N/A	N/A	2/2019	Adleberg	25 Month Monitoring
Switzer Canyon	Revegetation	<0.01	4/22/2016	4/22/2016	N/A	5/22/2019	Adleberg	25 Month Monitoring
AWPF North Pueblo	Revegetation	<0.01	4/19/2016	N/A	N/A	5/19/2019	Adleberg	25 Month Monitoring
Mission Valley Canyon Sewer Repair	Revegetation	0.001	5/2016	10/2015	11/2016	6/2018	Lavan	25 Month Monitoring
Sorrento Valley Water Main Leak Emergency Repair (Water)	Reveg/Rest	0.006	N/A	N/A	N/A	N/A	Adleberg	60 Month Monitoring

Completed Projects					
Canyon/Project	Revegetation or Restoration	Project Initiation	Project Completion	PM	
Rancho Mission LT Streambed	Reveg/Rest	3/2014	6/24/2016	Lavan	
Hawk Street Slope Repair (Water)	Revegetation	2/28/2014	4/29/2016	Smith	
PS 77 Force Main Inspection	Restoration	3/10/2014	5/31/2016	Smith	
Otay Pipe Protection	Restoration	11/2013	5/11/2016	Lavan	
Buchanan Canyon MH 31	Restoration	9/2012	4/26/2016	Adleberg	
Famosa Slough Pipe Repair	Revegetation	11/15/2013	12/15/2015	Paver	
Spruce Mh 220 Emergency	Revegetation	11/25/2013	12/25/2015	Paver	
Mission Center Canyon	Restoration	4/29/2011	1/27/2016	Tran	
Snead Ave MH Raising	Revegetation	11/21/2012	7/13/2015	Balo	
Fay Ave/ Draper Street	Revegetation	6/1/2013	7/1/2015	Adleberg	
Ocean Blvd Pipe Removal	Restoration	2/15/2013	6/19/2015	Paver	
36-inch Water Pipe Repair Black Mountain	Revegetation	5/13/2014	6/19/2015	Paver	
Middle Rose MH 160 and Lower MH 9	Restoration	12/5/2012	4/16/2015	VanEvery	
Casita Way Sewer Repairs	Revegetation	11/4/2012	2/29/2015	Smith	
Mission Ave Sewer Spot Repair	Revegetation	11/21/2012	2/29/2015	Adleberg	
Manzanita/Lex Water Break	Restoration	11/29/2012	2/29/2015	Paver	
Manzanita Sewer Emergency	Revegetation	12/5/2012	2/29/2015	Paver	
Stevenson MH 257 Emergency	Revegetation	12/6/2012	2/29/2015	Paver	
Wellington Spot Repairs	Revegetation	10/14/2013	2/29/2015	Paver	
Alta View Water Emergency (Water)	Restoration	7/31/2012	10/28/2014	Adleberg	
Imperial and Woodman	Revegetation	9/2012	10/28/2014	Adleberg	
Euclid and Menlo Restoration	Restoration	11/16/2011	8/28/2014	Smith	
Lakeside Ave Emergency	Revegetation/Restoration	4/15/2012	8/28/2014	Paver	
Rose (MH 476)	Revegetation/Restoration	11/2008	6/28/2014	Paver	
Rose Sinkhole	Revegetation/Restoration	5/23/2011	6/28/2014	Paver	
Hotel Circle South Emergency	Restoration	11/9/2011	6/28/2014	Paver	
Chollas YMCA	Revegetation	1/18/2012	6/28/2014	Paver	
Keighley Street	Revegetation	12/9/2011	2/2014	Balo	
Nobel Drive Sewer Repair	Restoration	2/25/2013	2/2014	Paver	
Lexington Water Emer (Water)	Restoration	1/2011	1/2014	Balo	
Dulzura Flume (Water)	Restoration	9/10/2013	1/2014	Balo	
Upas Street	Revegetation	9/29/2011	1/2014	Smith	
Dwane and Elaine	Restoration	6/29/2011	9/2013	Smith	
Admiral Baker	Revegetation	7/21/2011	9/2013	Balo	
East Tecolote	Restoration	11/24/2010	7/2013	White	
Carmel Valley Rd (Water)	Revegetation	5/20/2011	7/2013	Balo	
Central Tecolote MH 159	Revegetation	5/9/2011	7/2013	Balo	
Plaza Ridge (Water)	Revegetation	1/19/2011	5/2013	Smith	
33 rd and Maple	Revegetation	3/16/2011	5/2013	Smith	
Lake Murray (Water)	Restoration	1/2011	3/2013	Balo	
San Clemente Emergency	Revegetation	1/2011	3/2013	Balo	
San Clemente MH 4 Access	Revegetation	2/2011	3/2013	Balo	
Menlo and Redwood	Restoration	11/2010	3/2013	Smith	
Rancho Mission Slope	Restoration	6/10/2010	10/2012	Balo	
Lake Hodges	Restoration	7/1/2010	10/2012	Domasco	
Oklahoma Street	Restoration	5/3/2010	8/2012	Domasco	
Lopez MH 102	Restoration	5/2010	8/2012	Domasco	
Valeta Street	Revegetation	5/3/2010	8/2012	Santos	
PS 30	Restoration	4/20/2010	5/20/2012	Van Every	
South Juniper	Reveg/Rest	11/2009	2/9/2012	Domasco	

ATTACHMENT B
MITIGATION SUMMARY TABLE



Mitigation Site Details



Mitigation Site	Mitigation Type	Habitat	USACE	CDFW	City	MHPA	Coastal	Park	Acres	Used	Free
Penasquitos											
Canyon View (Penasquitos Upland)	Upland Restoration	Coastal Sage Scrub (CSS)	✗	✗	✓	✗	✗	✗	6.4900	1.6370	4.8530
		Native Grassland (NG)	✗	✗	✓	✗	✗	✗	0.8900	0.0200	0.8700
Central Tecolote Enhancement/Mitigation	Upland Restoration	Diegan Coastal Sage Scrub (DCSS)	✗	✗	✓	✗	✗	✗	2.0790	0.6180	1.4610
		Native Grassland (NG)	✗	✗	✓	✗	✗	✗	1.6400	0.1040	1.5360
	Wetland Enhancement	Riparian Forest (RF)	✗	✓	✓	✗	✗	✗	6.5040	0.9054	5.5986
		Riparian Forest (RF)	✓	✓	✓	✗	✗	✗	1.5600	0.8852	0.6748
El Cuervo Norte	Wetland Creation/Restoration	Riparian Forest (RF)	✓	✓	✓	✗	✗	✗	0.7200	0.6370	0.0830
	Wetland Enhancement	Riparian Forest (RF)	✓	✓	✓	✗	✗	✗	0.6800	0.6690	0.0110
El Rancho (Penasquitos Enhancement)	Wetland Enhancement	Riparian Forest (RF)	✓	✓	✓	✗	✗	✗	5.5300	4.6748	0.8552
Los Penasquitos North	Upland Restoration	Diegan Coastal Sage Scrub (DCSS)	✗	✗	✓	✓	✓	✓	1.0300	1.0250	0.0050
	Wetland Creation/Restoration	Freshwater Marsh (FM)	✓	✓	✓	✓	✓	✓	0.2200	0.2200	0.0000
		Riparian Woodland (RW)	✓	✓	✓	✓	✓	✓	0.4300	0.4300	0.0000
		Southern Willow Scrub (SWS)	✓	✓	✓	✓	✓	✓	3.1500	2.9450	0.2050
Penasquitos Eucalyptus Removal	Wetland Creation/Restoration	Riparian Forest (RF)	✓	✓	✓	✗	✗	✗	0.3100	0.3100	0.0000
Rose Canyon Wetland and Upland	Upland Restoration	Coastal Sage Scrub (CSS)	✗	✗	✓	✓	✗	✓	4.7500	2.1580	2.5920
		Native Grassland (NG)	✗	✗	✓	✓	✗	✓	0.2800	0.0870	0.1930
	Wetland Creation/Restoration	Riparian Forest (RF)	✓	✓	✓	✓	✗	✓	0.6200	0.6084	0.0116
		Riparian Forest (RF)	✓	✓	✓	✓	✗	✓	2.4200	2.1270	0.2930
		Riparian Forest (RF)	✗	✓	✓	✓	✗	✓	2.0100	0.4937	1.5163
	Wetland Enhancement	Riparian Forest (RF)	✗	✓	✓	✓	✗	✓	0.6100	0.5517	0.0583
San Clemente Wetland and Upland	Upland Restoration	Coast Live Oak Woodland (CLOW)	✗	✗	✓	✓	✗	✓	0.3900	0.1890	0.2010
		Coastal Sage Scrub (CSS)	✗	✗	✓	✓	✗	✓	2.4200	1.5555	0.8645
	Wetland Creation/Restoration	Emergent Wetland (EW)	✓	✓	✓	✓	✗	✓	0.2000	0.0000	0.2000
		Riparian Forest (RF)	✓	✓	✓	✓	✗	✓	0.8800	0.7590	0.1210
		Riparian Forest (RF)	✗	✓	✓	✓	✗	✓	1.7600	1.2280	0.5320
		Streambed (STREAMBED)	✓	✓	✓	✓	✗	✓	0.0200	0.0130	0.0070

**CANYON SEWER CLEANING PROGRAM AND LONG TERM SEWER
MAINTENANCE PROGRAM PROGRESS REPORT**

July 2016

Tecolote - Tree of Heaven removal	Wetland Enhancement	Riparian Forest (RF)	✓	✓	✓	✗	✗	✗	0.2500	0.2500	0.0000
Tecolote Canyon Wetland and Upland	Upland Restoration	Coastal Sage Scrub (CSS)	✗	✗	✓	✓	✗	✓	3.3000	3.0498	0.2502
		Native Grassland (NG)	✗	✗	✓	✓	✗	✓	0.0700	0.0560	0.0140
	Wetland Creation/Restoration	Riparian Forest (RF)	✓	✓	✓	✗	✗	✗	1.1900	0.6850	0.5050
		Southern Willow Scrub (SWS)	✓	✓	✓	✗	✗	✗	0.4200	0.3890	0.0310
San Diego											
Camino del Rio North - San Diego River Creation	Wetland Creation/Restoration	Riparian Forest (RF)	✓	✓	✓	✗	✗	✗	3.4300	2.2309	1.1991
Lake Murray	Upland Restoration	Diegan Coastal Sage Scrub (DCSS)	✗	✗	✓	✗	✗	✗	5.2000	4.8952	0.3048
	Wetland Enhancement	Southern Willow Scrub (SWS)	✓	✓	✓	✗	✗	✗	2.5000	1.5659	0.9341
Rancho Mission Enhancement	Wetland Enhancement	Southern Willow Scrub (SWS)	✓	✓	✓	✗	✗	✗	8.7400	2.1322	6.6078
Stadium	Upland Restoration	Diegan Coastal Sage Scrub (DCSS)	✗	✗	✓	✓	✗	✗	1.1000	0.0000	1.1000
	Wetland Creation/Restoration	Southern Riparian Woodland (SRW)	✓	✓	✓	✓	✗	✗	15.3000	0.0000	15.3000
		Southern Riparian Woodland (SRW)	✗	✓	✓	✓	✗	✗	5.5000	0.0000	5.5000
	Wetland Enhancement	Freshwater Marsh (FM)	✓	✓	✓	✓	✗	✗	0.2000	0.0000	0.2000
		Southern Riparian Woodland (SRW)	✓	✓	✓	✓	✗	✗	24.0000	0.0000	24.0000
		Southern Riparian Woodland (SRW)	✗	✓	✓	✓	✗	✗	8.0000	0.0000	8.0000
Tijuana											
Marron Valley Cornerstone Lands Conservation Bank	Upland Bank	Diegan Coastal Sage Scrub (DCSS)	✗	✗	✓	✓	✗	✗	7.5450	6.8660	0.6790
Otay Mesa Mitigation Bank	Upland Bank	Maritime Succulent Scrub (MSS)	✗	✗	✓	✓	✗	✗	13.2400	1.7280	11.5120

ATTACHMENT C
MITIGATION ASSIGNMENT SUMMARY TABLE



Mitigation by Mitigation Site



Mitigation Site: <All Mitigation Sites>

Mitigation Type: <All Mitigation Types>

Project: <All Projects>

Mitigation Type	Mitigation Habitat	Project	Impact Habitat	Mitigation Acres	In/Adjacent/Out Watershed	In/Out Canyon	In/Out Project	Impact Date
Camino del Rio North - San Diego River								
Creation 2.2309								

Wetland 2.2309

Wetland Creation/Restoration	Riparian Forest (RF)	15 West and Elanus	Southern Willow Scrub (SWS)	0.0500	In	Out	Out	12/19/2003
		32nd Street - Huckleberry LT	Disturbed Wetland (DWET)	0.0400	Ajacent	Out	Out	
		32nd Street - Huckleberry LT	Non-Vegetated Channel (NVC)	0.0090	Ajacent	Out	Out	
		54th & Maisel	Freshwater Marsh (FM)	0.0080	In	Out	Out	07/05/2001
		60th Street Pipe Relocation/Permanent Access	Disturbed Wetland (DWET)	0.0050	In	Out	Out	
		Alvarado Court Emergency Sewer Repair	Freshwater Marsh (FM)	0.0800	In	Out	Out	10/05/1998
		Alvarado Court Emergency Sewer Repair	Southern Willow Scrub (SWS)	0.0060	In	Out	Out	10/05/1998
		Alvarado Court Emergency Sewer Repair	Southern Willow Scrub (SWS)	0.0100	In	Out	Out	10/05/1998
		Alvarado Court Sewer Crossing	Southern Willow Scrub (SWS)	0.0050	In	Out	Out	
		Alvarado Court Sewer Crossing	Non-Vegetated Channel (NVC)	0.0020	In	Out	Out	
		Alvarado LT	Mule Fat Scrub (MFS)	0.0020	In	Out	Out	
		Alvarado LT	Freshwater Marsh (FM)	0.0060	In	Out	Out	
		Alvarado LT	Southern Willow Scrub (SWS)	0.0250	In	Out	Out	
		Alvarado LT	Southern Willow Scrub (SWS)	0.0010	In	Out	Out	
		Alvarado LT	Non-Vegetated Channel (NVC)	0.0350	In	Out	Out	
		Alvarado Trunk Sewer	Disturbed Wetland (DWET)	0.0220	In	Out	Out	
		Buchanan	Disturbed Wetland (DWET)	0.3220	In	Out	Out	04/30/2002
		Buchanan	Southern Willow Scrub (SWS)	0.0108	In	Out	Out	04/30/2002
		Buchanan Group Job 689	Non-Vegetated Channel (NVC)	0.0080	In	Out	Out	
		Buchanan Group Job 689	Non-Vegetated Channel (NVC)	0.0010	In	Out	Out	
		Buchanan LT	Disturbed Wetland (DWET)	0.0600	In	Out	Out	
		Buchanan Sewer Blockage Emergency	Southern Willow Scrub (SWS)	0.0080	In	Out	Out	
		Buchanan Sewer Blockage Emergency	Southern Willow Scrub (SWS)	0.0030	In	Out	Out	
		Chocolate Access MH 273 to 267	Emergent Wetland (EW)	0.0064	Ajacent	Out	Out	07/31/2014
		Chocolate Canyon Emergency Access MH 245	Emergent Wetland (EW)	0.0030	Ajacent	Out	Out	07/31/2014
		Chollas Dam Vegetation Removal	Freshwater Marsh (FM)	0.0220	Ajacent	Out	Out	

Chollas Exposed Water Main Repair	Riparian Scrub (RS)	0.0140	Ajacent	Out	Out	
Dove Canyon Emergency Repair	Non-Vegetated Channel (NVC)	0.0010	In	Out	Out	
Dove Canyon Pipe Encasement	Non-Vegetated Channel (NVC)	0.0005	In	Out	Out	11/09/2016
Elanus & Murray Canyons (I-15 & Clairemont Mesa Bl	Southern Willow Scrub (SWS)	0.0070	In	Out	Out	12/11/2002
Elanus (I-15 & Clairemont Mesa Blvd) LT	Emergent Wetland (EW)	0.0050	In	Out	Out	
Emergency Repairs in South Juniper Canyon at Manhole 274	Non-Vegetated Channel (NVC)	0.0020	Ajacent	Out	Out	09/12/2014
Euclid & Menlo (3343 Menlo Ave Spalsh Apron	Non-Vegetated Channel (NVC)	0.0040	Ajacent	Out	Out	
Euclid & Menlo (47th & Thorn Sewer Maint & Emerg)	Disturbed Wetland (DWET)	0.0800	Ajacent	Out	Out	02/01/2004
Federal & Chollas	Disturbed Wetland (DWET)	0.0008	Ajacent	Out	Out	
Fox Canyon (University & 49th) Emergency Repair	Non-Vegetated Channel (NVC)	0.0020	Ajacent	Out	Out	
Hopkins	Disturbed Wetland (DWET)	0.0200	Out	Out	Out	03/17/2004
Hopkins (Calle Abajo Emergency)	Non-Vegetated Channel (NVC)	0.0020	Out	Out	Out	04/03/2002
Huckleberry (32nd St Canyon Emergency Maintenance)	Disturbed Wetland (DWET)	0.0400	Ajacent	Out	Out	07/22/2003
I-15 & Adams	Emergent Wetland (EW)	0.0040	In	Out	Out	05/06/2004
Junipero Serra (Jackson/Mission Gorge Emergency)	Southern Willow Scrub (SWS)	0.0100	In	Out	Out	11/13/2002
Junipero Serra (Mission Gorge Emergency Repair)	Riparian Scrub (RS)	0.0300	In	Out	Out	12/11/2001
Junipero Serra (Superior Ready Mix Emergency Repai	Riparian Scrub (RS)	0.3000	In	Out	Out	01/26/2002
Junipero Serra (Superior Ready Mix Emergency Repai	Southern Cottonwood-Willow Riparian Forest (SCWRF)	0.0900	In	Out	Out	01/26/2002
Lake Murray Emergency Cleaning	Southern Willow Scrub (SWS)	0.0100	In	Out	Out	12/01/2002
Lake Murray Trunk Sewer and Permanent Access Path	Southern Willow Scrub (SWS)	0.1900	In	Out	Out	09/01/2004
Lake Murray Trunk Sewer and Permanent Access Path	Southern Willow Scrub (SWS)	0.0100	In	Out	Out	09/01/2004
Lake Murray Trunk Sewer and Permanent Access Path	Freshwater Marsh (FM)	0.0700	In	Out	Out	09/01/2004
Lexington Long-Term Access	Non-Vegetated Channel (NVC)	0.0800	Ajacent	Out	Out	
Lexington Pipe Encasement Emergency 2016	Non-Vegetated Channel (NVC)	0.0005	In	Out	Out	02/18/2016
Lexington Pipe Encasement Emergency 2016	Non-Vegetated Channel (NVC)	0.0005	In	Out	Out	02/19/2016
Market & Euclid (MH 88 Repair at Encanto Creek)	Southern Willow Scrub (SWS)	0.0030	Ajacent	Out	Out	
Mission Center Canyon B	Non-Vegetated Channel (NVC)	0.0350	In	Out	Out	
Mission Center Canyon B	Riparian Scrub (RS)	0.0250	In	Out	Out	
Mission Center Canyon B	Emergent Wetland (EW)	0.0200	In	Out	Out	
Mission Center Canyon B	Disturbed Wetland (DWET)	0.0140	In	Out	Out	
Mission Center Canyon Emergency Sewer Repair	Southern Willow Scrub (SWS)	0.0030	In	Out	Out	
Mission Center Canyon Emergency Sewer Repair	Southern Willow Scrub (SWS)	0.0010	In	Out	Out	

Mission Center Canyon Emergency Sewer Repair	Freshwater Marsh (FM)	0.0160	In	Out	Out	
Mission Center Canyon Emergency Sewer Repair	Freshwater Marsh (FM)	0.0070	In	Out	Out	
Mission Center MH 101 Protection and Access Path Repairs	Non-Vegetated Channel (NVC)	0.0040	In	Out	Out	01/09/2016
Mission Center Rd. (Kearny Mesa)	Southern Willow Scrub (SWS)	0.0070	In	Out	Out	01/13/2002
Murphy Canyon MH114 Locate and Raise	Southern Willow Scrub (SWS)	0.0140	In	Out	Out	08/24/2015
Murphy Canyon TS Access and Repair	Freshwater Marsh (FM)	0.0340	In	Out	Out	06/20/2014
Norfolk (Fairmont & Montezuma)	Southern Willow Scrub (SWS)	0.0030	In	Out	Out	04/22/2002
Norfolk LT	Non-Vegetated Channel (NVC)	0.0050	In	Out	Out	
Otay Valley TS Pipe Protection	Non-Vegetated Channel (NVC)	0.0180	Out	Out	Out	
Presidio (Palm Cyn) GJ665	Riparian Scrub (RS)	0.1650	In	Out	Out	
Presidio (Palm Cyn) GJ665	Non-Vegetated Channel (NVC)	0.0017	In	Out	Out	
Presidio (Palm Cyn) GJ665	Non-Vegetated Channel (NVC)	0.0120	In	Out	Out	
Rancho Mission (Mission Gorge Canyon, Conestoga Co)	Disturbed Wetland (DWET)	0.0050	In	Out	Out	02/07/2002
Rancho Mission LT	Non-Vegetated Channel (NVC)	0.0070	In	Out	Out	
Rancho Mission LT	Southern Willow Scrub (SWS)	0.0070	In	Out	Out	
San Diego Mission Rd Emergency	Southern Willow Scrub (SWS)	0.0100	In	Out	Out	
San Diego Mission Rd Emergency	Freshwater Marsh (FM)	0.0100	In	Out	Out	
Shawn Canyon Pipe Repair Emergency FSN 32934	Non-Vegetated Channel (NVC)	0.0015	In	Out	Out	03/28/2016
Shepherd	Southern Willow Scrub (SWS)	0.0100	In	Out	Out	02/01/2003
Shepherd LT	Disturbed Wetland (DWET)	0.0150	In	Out	Out	
Shepherd LT	Riparian Scrub (RS)	0.0200	In	Out	Out	
Shepherd LT	Riparian Woodland (RW)	0.0300	In	Out	Out	
Valencia Canyon Emergency Repair & Maintenance	Mule Fat Scrub (MFS)	0.0040	Ajacent	Out	Out	01/25/2003
Washington Creek Canyon Manhole 85 Emergency	Non-Vegetated Channel (NVC)	0.0002	Ajacent	Out	Out	02/09/2016

Canyon View (Penasquitos Upland) 1.6570

Upland 1.6570

Upland Restoration	Coastal Sage Scrub (CSS)	Black Mtn Access Rd Repair	Diegan Coastal Sage Scrub (DCSS)	0.0700	In	Out	Out
		Black Mtn Access Rd Repair	Diegan Coastal Sage Scrub (DCSS)	0.1200	In	Out	Out
		Lopez Canyon LT	Non-Native Grassland (NNG)	0.0130	In	Out	Out
		Lopez Canyon LT	Diegan Coastal Sage Scrub (DCSS)	0.3000	In	Out	Out
		Lopez Emergency Cleaning	Diegan Coastal Sage Scrub (DCSS)	0.5100	In	Out	Out

	Lopez Emergency Cleaning	Non-Native Grassland (NNG)	0.0500	In	Out	Out	
	Lopez Emergency Cleaning	Southern Mixed Chaparral (SMC)	0.0100	In	Out	Out	
	Lopez MH 102 Emergency	Diegan Coastal Sage Scrub (DCSS)	0.0220	In	Out	Out	
	Manhole 477 Raise	Diegan Coastal Sage Scrub (DCSS)	0.0040	In	Out	Out	
	Penasquitos Lagoon Mh 190 Access	Diegan Coastal Sage Scrub (DCSS)	0.0060	In	Out	Out	
	Penasquitos Views Trunk Sewer	Non-Native Grassland (NNG)	0.5200	In	In	Out	
	Pump Station 45 Pipe Repair Emergency	Diegan Coastal Sage Scrub (DCSS)	0.0120	In	Out	Out	11/10/2015
Native Grassland (NG)	Lopez Emergency Cleaning	Scrub Oak Chaparral (SOC)	0.0200	In	Out	Out	

**Central Tecolote
Enhancement/Mitigation 2.5126**

Upland 0.7220

Upland Restoration	Diegan Coastal Sage Scrub (DCSS)	East Tecolote Canyon Pipe Encasemt Protection Proj	Non-Native Grassland (NNG)	0.0200	In	Out	Out	10/04/2010
		Tecolote LT	Diegan Coastal Sage Scrub (DCSS)	0.4580	In	In	Out	
		Tecolote LT	Southern Mixed Chaparral (SMC)	0.0500	In	In	Out	
		Tecolote LT	Poison Oak Scrub (POS)	0.0900	In	In	Out	
	Native Grassland (NG)	East Tecolote Canyon Pipe Encasemt Protection Proj	Coast Live Oak Woodland (CLOW)	0.0220	In	Out	Out	10/04/2010
		East Tecolote Canyon Pipe Encasemt Protection Proj	Native Grassland (NG)	0.0020	In	Out	Out	10/04/2010
		Tecolote LT	Maritime Succulent Scrub (MSS)	0.0200	In	In	Out	
		Tecolote LT	Coast Live Oak Woodland (CLOW)	0.0600	In	In	Out	

Wetland 1.7906

Wetland Enhancement	Riparian Forest (RF)	East Tecolote (East Clairemont)	Southern Coast Live Oak Riparian Forest (SCLORF)	0.0080	In	Out	Out	01/08/2002
		East Tecolote (East Clairemont)	Southern Willow Scrub (SWS)	0.0001	In	Out	Out	01/08/2002
		East Tecolote (East Clairemont) LT	Southern Riparian Forest (SRF)	0.0080	In	Out	Out	
		East Tecolote (East Clairemont) LT	Southern Willow Scrub (SWS)	0.0010	In	Out	Out	
		East Tecolote (East Clairemont) LT	Southern Willow Scrub (SWS)	0.0030	In	Out	Out	
		East Tecolote (East Clairemont) LT	Freshwater Marsh (FM)	0.0080	In	Out	Out	
		East Tecolote (East Clairemont) LT	Non-Vegetated Channel (NVC)	0.0010	In	Out	Out	
		East Tecolote (East Clairemont) LT	Freshwater Marsh (FM)	0.0010	In	Out	Out	
		East Tecolote (East Clairemont) LT	Freshwater Marsh (FM)	0.0020	In	Out	Out	
		East Tecolote (East Clairemont) LT	Non-Vegetated Channel (NVC)	0.0020	In	Out	Out	

East Tecolote (East Clairemont) LT	Southern Willow Scrub (SWS)	0.0100	In	Out	Out	
East Tecolote (East Clairemont) LT	Southern Willow Scrub (SWS)	0.0170	In	Out	Out	
East Tecolote (East Clairemont) LT	Southern Riparian Forest (SRF)	0.1220	In	Out	Out	
East Tecolote (East Clairemont) LT	Southern Riparian Forest (SRF)	0.0540	In	Out	Out	
East Tecolote Canyon Pipe Encasemt Protection Proj	Southern Riparian Forest (SRF)	0.0600	In	Out	Out	10/04/2010
East Tecolote Canyon Pipe Encasemt Protection Proj	Southern Willow Scrub (SWS)	0.0360	In	Out	Out	10/04/2010
East Tecolote Canyon Pipe Encasemt Protection Proj	Open Water (OW)	0.0230	In	Out	Out	10/04/2010
East Tecolote Emergency MH 218	Southern Riparian Forest (SRF)	0.0960	In	Out	Out	
East Tecolote Manholes 223 and 224 Emergency	Southern Riparian Forest (SRF)	0.0680	In	Out	Out	
East Tecolote Manholes 223 and 224 Emergency	Southern Willow Scrub (SWS)	0.0330	In	Out	Out	
East Tecolote Manholes 223 and 224 Emergency	Non-Vegetated Channel (NVC)	0.0150	In	Out	Out	
East Tecolote Manholes 223 and 224 Emergency	Freshwater Marsh (FM)	0.0390	In	Out	Out	
Park Mesa Way	Southern Willow Scrub (SWS)	0.1500	In	Out	Out	01/13/2000
Tecolote (including Mt. Elbrus)	Southern Coast Live Oak Riparian Forest (SCLORF)	0.0400	In	In	Out	11/18/2002
Tecolote (including Mt. Elbrus)	Southern Willow Scrub (SWS)	0.0200	In	In	Out	11/18/2002
Tecolote (including Mt. Elbrus)	Southern Willow Scrub (SWS)	0.1100	In	In	Out	11/18/2002
Tecolote 8 inch CI Sewer Main Replacement	Southern Willow Scrub (SWS)	0.0030	In	In	Out	
Tecolote 8 inch CI Sewer Main Replacement	Southern Willow Scrub (SWS)	0.0020	In	In	Out	
Tecolote Emergency Pipe Repair (Crossing)	Southern Coast Live Oak Riparian Forest (SCLORF)	0.0040	In	In	Out	
Tecolote Emergency Pipe Repair (Crossing)	Southern Willow Scrub (SWS)	0.0080	In	In	Out	
Tecolote Emergency Pipe Repair (Crossing)	Emergent Wetland (EW)	0.0020	In	In	Out	
Tecolote LT	Mule Fat Scrub (MFS)	0.0100	In	In	Out	
Tecolote LT	Non-Vegetated Channel (NVC)	0.0200	In	In	Out	
Tecolote LT	Southern Willow Scrub (SWS)	0.0300	In	In	Out	
Tecolote LT	Southern Riparian Forest (SRF)	0.1836	In	In	Out	
Tecolote LT	Southern Riparian Forest (SRF)	0.4984	In	In	Out	
Tecolote MH 101 Emergency	Mule Fat Scrub (MFS)	0.0005	In	In	Out	
Tecolote Mt. Ashmun Pipe Protection Emergency	Non-Vegetated Channel (NVC)	0.0070	In	In	Out	01/17/2008
Tecolote Mt. Ashmun Pipe Protection Emergency	Riparian Forest (RF)	0.0200	In	In	Out	01/17/2008
Tecolote Mt. Ashmun Pipe Protection Erosion Contro	Riparian Forest (RF)	0.0040	In	In	Out	
Tecolote Mt. Ashmun Pipe Protection Erosion Contro	Southern Willow Scrub (SWS)	0.0010	In	In	Out	
Tecolote Pipe Repair Near Manhole 346	Southern Riparian Forest (SRF)	0.0700	In	In	Out	

El Cuervo Norte 1.3060

Wetland 1.3060

Wetland Creation/Restoration	Riparian Forest (RF)	Acuna	Southern Willow Scrub (SWS)	0.0800	In	Out	Out	07/05/2002
		Acuna	Mule Fat Scrub (MFS)	0.0020	In	Out	Out	07/05/2002
		Acuna	Disturbed Wetland (DWET)	0.0400	In	Out	Out	07/05/2002
		Acuna Street Emergency	Southern Willow Scrub (SWS)	0.0400	In	Out	Out	07/06/1998
		Penasquitos Bluffs (Finger Canyon Emergency)	Southern Willow Scrub (SWS)	0.0200	In	Out	Out	11/01/2000
		Penasquitos Bluffs (Finger Canyon Emergency)	Coastal and Valley Freshwater Marsh (CVFM)	0.0600	In	Out	Out	11/01/2000
		San Clemente (Emergency Repairs Combined)	Mule Fat Scrub (MFS)	0.0200	In	Out	Out	09/17/2001
		San Clemente (Emergency Repairs Combined)	Southern Willow Scrub (SWS)	0.0030	In	Out	Out	09/17/2001
		San Clemente (Emergency Repairs Combined)	Riparian Woodland (RW)	0.0520	In	Out	Out	09/17/2001
		Stevenson	Southern Willow Scrub (SWS)	0.2800	In	Out	Out	10/01/2001
		Stevenson	Mule Fat Scrub (MFS)	0.0200	In	Out	Out	10/01/2001
		Torreyana Sewer Repair	Non-Vegetated Channel (NVC)	0.0200	In	Out	Out	10/01/2001
Wetland Enhancement	Riparian Forest (RF)	Acuna	Mule Fat Scrub (MFS)	0.0020	In	Out	Out	07/05/2002
		Acuna	Disturbed Wetland (DWET)	0.0400	In	Out	Out	07/05/2002
		Acuna	Southern Willow Scrub (SWS)	0.0800	In	Out	Out	07/05/2002
		Acuna Street Emergency	Southern Willow Scrub (SWS)	0.0400	In	Out	Out	07/06/1998
		Penasquitos Bluffs (Finger Canyon Emergency)	Southern Willow Scrub (SWS)	0.0200	In	Out	Out	11/01/2000
		Penasquitos Bluffs (Finger Canyon Emergency)	Coastal and Valley Freshwater Marsh (CVFM)	0.0600	In	Out	Out	11/01/2000
		San Clemente (Emergency Repairs Combined)	Mule Fat Scrub (MFS)	0.0200	In	Out	Out	09/17/2001
		San Clemente (Emergency Repairs Combined)	Southern Willow Scrub (SWS)	0.0030	In	Out	Out	09/17/2001
		San Clemente (Emergency Repairs Combined)	Riparian Woodland (RW)	0.1040	In	Out	Out	09/17/2001
		Stevenson	Southern Willow Scrub (SWS)	0.2800	In	Out	Out	10/01/2001
		Stevenson	Mule Fat Scrub (MFS)	0.0200	In	Out	Out	10/01/2001

El Rancho (Penasquitos Enhancement) 4.6748

Wetland 4.6748

Wetland Enhancement	Riparian Forest (RF)	Acuna LT	Southern Willow Scrub (SWS)	0.0100	In	Out	Out	
		Balboa Terrace Trunk Sewer Replacement	Disturbed Wetland (DWET)	0.1070	In	Out	Out	09/16/2012
		Balboa Terrace Trunk Sewer Replacement	Freshwater Marsh (FM)	0.0160	In	Out	Out	09/16/2012
		Balboa Terrace Trunk Sewer Replacement	Mule Fat Scrub (MFS)	0.0220	In	Out	Out	09/16/2012
		Balboa Terrace Trunk Sewer Replacement	Non-Vegetated Channel (NVC)	0.0140	In	Out	Out	09/16/2012
		Balboa Terrace Trunk Sewer Replacement	Southern Willow Scrub (SWS)	0.0640	In	Out	Out	09/16/2012

Balboa Terrace Trunk Sewer Replacement	Oak Riparian Forest (ORF)	0.0060	In	Out	Out	09/16/2012
Balboa Terrace Trunk Sewer Replacement	Freshwater Marsh (FM)	0.0240	In	Out	Out	
Black Mountain Road Finger Canyon	Freshwater Marsh (FM)	0.0060	In	In	Out	04/04/2003
Carmel Valley Rd Emergency Water Break	Riparian Scrub (RS)	0.0520	In	Out	Out	
Carmel Valley Rd Emergency Water Break	Southern Willow Scrub (SWS)	0.0160	In	Out	Out	
Carroll and Mesa Rim	Southern Willow Scrub (SWS)	0.1500	In	Out	Out	06/02/2003
Carroll and Mesa Rim	Southern Coast Live Oak Riparian Forest (SCLORF)	0.2000	In	Out	Out	06/02/2003
Carroll Canyon Emergency Sewer Repair	Southern Arroyo Willow Riparian Forest (SAWRF)	0.0600	In	Out	Out	02/26/2010
Carroll Canyon Emergency Sewer Repair	Non-Vegetated Channel (NVC)	0.0400	In	Out	Out	02/26/2010
Gesner/Huron	Riparian Woodland (RW)	0.1100	In	Out	Out	08/01/1998
I-5/SR-52 Maintenance Project	Southern Willow Scrub (SWS)	0.0300	In	Out	Out	
Lopez Canyon LT	Riparian Woodland (RW)	0.0150	In	Out	Out	
Lopez Canyon LT	Southern Willow Scrub (SWS)	0.0400	In	Out	Out	
Lopez Canyon LT MH 13 Access	Alkali Marsh (AM)	0.3000	In	Out	Out	
Lopez Emergency Cleaning	Emergent Wetland (EW)	0.0010	In	Out	Out	
Lopez Emergency Cleaning	Riparian Forest (RF)	0.0080	In	Out	Out	
Lopez Emergency Cleaning	Mule Fat Scrub (MFS)	0.0400	In	Out	Out	
Lopez Emergency Cleaning	Southern Willow Scrub (SWS)	0.0800	In	Out	Out	
Lower Rose Canyon Emergency Repairs (MH 15)	Southern Willow Scrub (SWS)	0.3200	In	Out	Out	05/04/2005
Manhole 477 Raise	Freshwater Marsh (FM)	0.0090	In	Out	Out	
Middle Rose Cyn MH 160 Emergency	Southern Willow Scrub (SWS)	0.0200	In	Out	Out	12/01/2011
Monte Verde Sewer Improvements	Southern Riparian Forest (SRF)	0.0400	In	Out	Out	
Monte Verde Sewer Improvements	Southern Riparian Forest (SRF)	0.0400	In	Out	Out	
Old Rose Canyon Sewer Relocation Project	Southern Willow Scrub (SWS)	0.0400	In	Out	Out	02/08/2011
Old Rose Canyon Sewer Relocation Project	Mule Fat Scrub (MFS)	0.0070	In	Out	Out	02/08/2011
Old Rose Canyon Sewer Relocation Project	Freshwater Marsh (FM)	0.0020	In	Out	Out	02/08/2011
Park Mesa LT	Southern Willow Scrub (SWS)	0.0050	In	Out	Out	
Park Mesa LT	Southern Willow Scrub (SWS)	0.0300	In	Out	Out	
Penasquitos Bluffs LT	Alkali Marsh (AM)	0.0040	In	Out	Out	
Penasquitos Bluffs LT	Alkali Marsh (AM)	0.0100	In	Out	Out	
Penasquitos Bluffs LT	Southern Willow Scrub (SWS)	0.0030	In	Out	Out	
Penasquitos Bluffs LT	Southern Willow Scrub (SWS)	0.0070	In	Out	Out	
Penasquitos Bluffs LT	Freshwater Marsh (FM)	0.0140	In	Out	Out	

Penasquitos Preserve (East of Black Mountain Road)	Southern Cottonwood-Willow Riparian Forest (SCWRF)	0.1800	In	In	Out	10/16/2003
Penasquitos Preserve LT	Southern Cottonwood-Willow Riparian Forest (SCWRF)	0.2400	In	In	Out	
Penasquitos Preserve LT	Southern Coast Live Oak Riparian Forest (SCLORF)	0.1060	In	In	Out	
Penasquitos Preserve LT	Mule Fat Scrub (MFS)	0.0320	In	In	Out	
Penasquitos Preserve LT	Freshwater Marsh (FM)	0.0450	In	In	Out	
Penasquitos Preserve LT	Coast Live Oak Woodland (CLOW)	0.0120	In	In	Out	
Penasquitos Preserve LT	Non-Vegetated Channel (NVC)	0.0050	In	In	Out	
Penasquitos View Emergency	Cismontane Alkali Marsh (CAM)	0.0020	In	Out	Out	08/18/2004
Rose Canyon ER Repairs between 9/01 and 5/03	Non-Vegetated Channel (NVC)	0.0018	In	Out	Out	09/01/2001
Rose Canyon ER Repairs between 9/01 and 5/03	Mule Fat Scrub (MFS)	0.0300	In	Out	Out	09/01/2001
Rose Canyon ER Repairs between 9/01 and 5/03	Riparian Woodland (RW)	0.0400	In	Out	Out	09/01/2001
Rose Canyon ER Repairs between 9/01 and 5/03	Southern Willow Scrub (SWS)	0.0300	In	Out	Out	09/01/2001
San Clemente Canyon Access Path LT Project	Southern Coast Live Oak Riparian Forest (SCLORF)	0.6400	In	Out	Out	
San Clemente Canyon Access Path LT Project	Southern Cottonwood-Willow Riparian Forest (SCWRF)	0.2660	In	Out	Out	
San Clemente Emergency Sewer Encasement Repair	Southern Coast Live Oak Riparian Forest (SCLORF)	0.0400	In	Out	Out	12/13/2010
Stevenson Long Term Access Project	Southern Willow Scrub (SWS)	0.0280	In	Out	Out	
Stevenson Long Term Access Project	Mule Fat Scrub (MFS)	0.0850	In	Out	Out	
Stevenson Long Term Access Project	Non-Vegetated Channel (NVC)	0.0280	In	Out	Out	
Van Nuys Canyon Emergency Sewer Repair Project	Non-Vegetated Channel (NVC)	0.0200	In	Out	Out	12/31/2004
Van Nuys Canyon MH # 91 Sewer Blockage	Non-Vegetated Channel (NVC)	0.1300	In	Out	Out	12/04/1996
Van Nuys Canyon MH # 91 Sewer Blockage	Mule Fat Scrub (MFS)	0.2900	In	Out	Out	12/04/1996
Van Nuys Canyon MHs 113, 114 and 93	Non-Vegetated Channel (NVC)	0.0030	In	Out	Out	12/15/2003
Van Nuys Installation of 2 36-inch Pipe Culverts	Southern Willow Scrub (SWS)	0.0300	In	Out	Out	02/07/2001
Van Nuys MH #114 Sewage Leak Investigation	Non-Vegetated Channel (NVC)	0.0030	In	Out	Out	04/04/2002
Van Nuys MH #124 Sewer Leak	Non-Vegetated Channel (NVC)	0.0300	In	Out	Out	02/10/1998
Van Nuys MH #92-76 Four Sewer Breaks (Upper Canyon	Mule Fat Scrub (MFS)	0.1460	In	Out	Out	08/04/2000
Van Nuys MH #92-76 Four Sewer Breaks (Upper Canyon	Disturbed Wetland (DWET)	0.2500	In	Out	Out	08/04/2000

Lake Murray 6.4611

Upland 4.8952

Upland Restoration	Diegan Coastal Sage Scrub (DCSS)	32nd Street - Huckleberry LT	Non-Native Grassland (NNG)	0.0090	Ajacent	Out	Out	
		Alvarado Court Emergency Sewer Repair	Diegan Coastal Sage Scrub (DCSS)	0.1000	In	Out	Out	10/05/1998
		Alvarado Court Emergency Sewer Repair	Broom Baccharis Scrub (BBS)	0.0300	In	Out	Out	10/05/1998
		Alvarado Court Emergency Sewer Repair	Diegan Coastal Sage Scrub (DCSS)	0.0600	In	Out	Out	10/05/1998
		Alvarado TS MH 459 and 458 Maintenance	Diegan Coastal Sage Scrub (DCSS)	0.0050	In	Out	Out	
		Buchanan Sewer Blockage Emergency	Diegan Coastal Sage Scrub (DCSS)	0.0320	In	Out	Out	
		Buchanan Sewer Blockage Emergency	Southern Mixed Chaparral (SMC)	0.0230	In	Out	Out	
		Cardinal Drive Sewer Emergency	Diegan Coastal Sage Scrub (DCSS)	0.0016	In	Out	Out	
		Chocolate Access MH 273 to 267	Chamise Chaparral (CC)	0.0020	Ajacent	Out	Out	07/31/2014
		Chocolate Canyon Emergency Access MH 245	Chamise Chaparral (CC)	0.0010	Ajacent	Out	Out	07/31/2014
		Florida Canyon	Diegan Coastal Sage Scrub (DCSS)	0.0100	Ajacent	Out	Out	02/28/2004
		Huckleberry (32nd & Beech)	Diegan Coastal Sage Scrub (DCSS)	0.0090	Ajacent	Out	Out	07/12/2001
		Huckleberry (32nd & Beech)	Non-Native Grassland (NNG)	0.0230	Ajacent	Out	Out	07/12/2001
		Huckleberry (32nd St Canyon Emergency Maintenance)	Non-Native Grassland (NNG)	0.0300	Ajacent	Out	Out	07/22/2003
		Hwy 163 (7th and Brookes 2004 Emergency Maint)	Non-Native Grassland (NNG)	0.0350	Ajacent	Out	Out	05/28/2004
		Hwy 163 Corridor (7th & Brookes 2002 Emergency Repa	Non-Native Grassland (NNG)	0.0150	Ajacent	Out	Out	11/26/2003
		Junipero Serra (Jackson/Mission Gorge Emergency)	Diegan Coastal Sage Scrub (DCSS)	0.0600	In	Out	Out	11/13/2002
		Lake Murray Emergency Cleaning	Diegan Coastal Sage Scrub (DCSS)	0.4700	In	In	Out	12/01/2002
		Lake Murray Emergency Cleaning	Diegan Coastal Sage Scrub (DCSS)	0.1700	In	In	Out	12/01/2002
		Lake Murray Emergency Cleaning	Non-Native Grassland (NNG)	0.0700	In	In	Out	12/01/2002
		Lake Murray Emergency Cleaning	Non-Native Grassland (NNG)	0.0300	In	In	Out	12/01/2002
		Lake Murray Trunk Sewer and Permanent Access Path	Diegan Coastal Sage Scrub (DCSS)	2.5700	In	In	Out	09/01/2004
		Lake Murray Trunk Sewer and Permanent Access Path	Diegan Coastal Sage Scrub (DCSS)	0.7500	In	In	Out	09/01/2004
		Lake Murray Trunk Sewer and Permanent Access Path	Non-Native Grassland (NNG)	0.0400	In	In	Out	09/01/2004
		Lake Murray Trunk Sewer and Permanent Access Path	Non-Native Grassland (NNG)	0.0100	In	In	Out	09/01/2004
		Lake Murray Trunk Sewer and Permanent Access Path	Broom Baccharis Scrub (BBS)	0.0500	In	In	Out	09/01/2004
		Lake Murray Trunk Sewer and Permanent Access Path	Broom Baccharis Scrub (BBS)	0.2800	In	In	Out	09/01/2004
		Mission Valley Canyon Sewer Lateral Repair	Diegan Coastal Sage Scrub (DCSS)	0.0006	In	Out	Out	09/16/2016

		Switzer MH 152 Access	Diegan Coastal Sage Scrub (DCSS)	0.0090	Ajacent	Out	Out	01/29/2014
Wetland 1.5659								
Wetland Enhancement	Southern Willow Scrub (SWS)	32nd Street - Huckleberry LT	Disturbed Wetland (DWET)	0.0400	Ajacent	Out	Out	
		54th & Maisel	Freshwater Marsh (FM)	0.0080	In	Out	Out	07/05/2001
		60th Street Pipe Relocation/Permanent Access	Disturbed Wetland (DWET)	0.0050	In	Out	Out	
		Alvarado Court Emergency Sewer Repair	Freshwater Marsh (FM)	0.0800	In	Out	Out	10/05/1998
		Alvarado Court Emergency Sewer Repair	Non-Vegetated Channel (NVC)	0.0300	In	Out	Out	10/05/1998
		Alvarado Court Emergency Sewer Repair	Southern Willow Scrub (SWS)	0.0060	In	Out	Out	10/05/1998
		Alvarado Court Emergency Sewer Repair	Southern Willow Scrub (SWS)	0.0100	In	Out	Out	10/05/1998
		Chocolate Access MH 273 to 267	Emergent Wetland (EW)	0.0064	Ajacent	Out	Out	07/31/2014
		Chocolate Canyon Emergency Access MH 245	Emergent Wetland (EW)	0.0030	Ajacent	Out	Out	07/31/2014
		Chocolate Combined	Non-Vegetated Channel (NVC)	0.0080	Ajacent	Out	Out	08/13/2000
		Huckleberry (32nd & Beech)	Non-Vegetated Channel (NVC)	0.0050	Ajacent	Out	Out	07/12/2001
		Huckleberry (32nd & Beech)	Disturbed Wetland (DWET)	0.0070	Ajacent	Out	Out	07/12/2001
		Hwy 163 Corridor (7th & Brookes 2002Emergency Repa	Non-Vegetated Channel (NVC)	0.0200	Ajacent	Out	Out	11/26/2003
		Junipero Serra (Jackson/Mission Gorge Emergency)	Southern Willow Scrub (SWS)	0.0100	In	Out	Out	11/13/2002
		Junipero Serra (Mission Gorge Emergency Repair)	Riparian Scrub (RS)	0.0300	In	Out	Out	12/11/2001
		Junipero Serra (Superior Ready Mix Emergency Repai	Riparian Scrub (RS)	0.6000	In	Out	Out	01/26/2002
		Junipero Serra (Superior Ready Mix Emergency Repai	Southern Cottonwood-Willow Riparian Forest (SCWRF)	0.1800	In	Out	Out	01/26/2002
		Junipero Serra (Superior Ready Mix Emergency Repai	Non-Vegetated Channel (NVC)	0.0400	In	Out	Out	01/26/2002
		Lake Murray Emergency Cleaning	Non-Vegetated Channel (NVC)	0.0100	In	In	Out	12/01/2002
		Lake Murray Emergency Cleaning	Southern Willow Scrub (SWS)	0.0100	In	In	Out	12/01/2002
		Lake Murray Trunk Sewer and Permanent Access Path	Non-Vegetated Channel (NVC)	0.0100	In	In	Out	09/01/2004
		Lake Murray Trunk Sewer and Permanent Access Path	Southern Willow Scrub (SWS)	0.3000	In	In	Out	09/01/2004
		Lake Murray Trunk Sewer and Permanent Access Path	Southern Willow Scrub (SWS)	0.0200	In	In	Out	09/01/2004
		Lake Murray Trunk Sewer and Permanent Access Path	Freshwater Marsh (FM)	0.0700	In	In	Out	09/01/2004
		Lexington Pipe Encasement Emergency 2016	Non-Vegetated Channel (NVC)	0.0005	In	Out	Out	02/19/2016
		Mission Center Rd. (Kearny Mesa)	Southern Willow Scrub (SWS)	0.0070	In	Out	Out	01/13/2002
		Switzer Canyon Emergency Sewer Repair Project	Non-Vegetated Channel (NVC)	0.0500	Ajacent	Out	Out	02/27/2002
Los Penasquitos North 4.6200								
Upland 1.0250								
Upland Restoration		Los Penasquitos North Wetland Creation Project	Coastal Sage Scrub (CSS)	0.8200	In	In	In	

	Diegan Coastal Sage Scrub (DCSS)	Torreyana Sewer Repair	Diegan Coastal Sage Scrub (DCSS)	0.1300	In	Out	Out	10/01/2001
		Torreyana Sewer Repair	Southern Mixed Chaparral (SMC)	0.0150	In	Out	Out	10/01/2001
		Torreyana Sewer Repair	Diegan Coastal Sage Scrub (DCSS)	0.0600	In	Out	Out	10/01/2001
Wetland 3.5950								
Wetland Creation/Restoration	Freshwater Marsh (FM)	Black Mountain Road Finger Canyon	Freshwater Marsh (FM)	0.0060	In	In	Out	04/04/2003
		Carmel Valley Rd Emergency Water Break	Riparian Scrub (RS)	0.0260	In	Out	Out	
		Lopez Canyon LT MH 13 Access	Alkali Marsh (AM)	0.1000	In	Out	Out	
		Lopez MH 102 Emergency	Non-Vegetated Channel (NVC)	0.0030	In	Out	Out	
		Lower Rose Creek Emergency Maintenance	Southern Willow Scrub (SWS)	0.0300	In	Out	Out	
		Penasquitos Preserve LT	Mule Fat Scrub (MFS)	0.0080	In	In	Out	
		Penasquitos Preserve LT	Freshwater Marsh (FM)	0.0450	In	In	Out	
		Penasquitos View Emergency	Cismontane Alkali Marsh (CAM)	0.0020	In	Out	Out	08/18/2004
	Riparian Woodland (RW)	Carroll and Mesa Rim	Riparian Woodland (RW)	0.4300	In	Out	Out	06/02/2003
	Southern Willow Scrub (SWS)	Acuna LT	Southern Willow Scrub (SWS)	0.0100	In	Out	Out	
		Carmel Valley Rd Emergency Water Break	Southern Willow Scrub (SWS)	0.0080	In	Out	Out	
		Carroll and Mesa Rim	Southern Willow Scrub (SWS)	0.1500	In	Out	Out	06/02/2003
		Carroll and Mesa Rim	Southern Coast Live Oak Riparian Forest (SCLORF)	0.1000	In	Out	Out	06/02/2003
		Carroll and Mesa Rim	Riparian Woodland (RW)	0.2900	In	Out	Out	06/02/2003
		Carroll and Mesa Rim	Mule Fat Scrub (MFS)	0.4400	In	Out	Out	06/02/2003
		Lopez Canyon LT	Riparian Woodland (RW)	0.0100	In	Out	Out	
		Lopez Canyon LT	Southern Willow Scrub (SWS)	0.0300	In	Out	Out	
		Lopez Canyon Manhole 102 Maintenance	Non-Vegetated Channel (NVC)	0.0010	In	Out	Out	
		Lopez Emergency Cleaning	Riparian Forest (RF)	0.0040	In	Out	Out	
		Lopez Emergency Cleaning	Mule Fat Scrub (MFS)	0.0400	In	Out	Out	
		Lopez Emergency Cleaning	Emergent Wetland (EW)	0.0010	In	Out	Out	
		Lopez Emergency Cleaning	Southern Willow Scrub (SWS)	0.0800	In	Out	Out	
		Lower Rose Creek Emergency Maintenance	Southern Willow Scrub (SWS)	0.7800	In	Out	Out	
		Manhole 477 Raise	Freshwater Marsh (FM)	0.0030	In	Out	Out	
		Park Mesa LT	Southern Willow Scrub (SWS)	0.0050	In	Out	Out	
		Park Mesa LT	Southern Willow Scrub (SWS)	0.0300	In	Out	Out	
		Park Mesa LT	Non-Vegetated Channel (NVC)	0.0060	In	Out	Out	
		Penasquitos Preserve (East of Black Mountain Road)	Southern Cottonwood-	0.0900	In	In	Out	10/16/2003

	Willow Riparian Forest (SCWRF)					
Penasquitos Preserve LT	Southern Cottonwood-Willow Riparian Forest (SCWRF)	0.1200	In	In	Out	
Penasquitos Preserve LT	Southern Coast Live Oak Riparian Forest (SCLORF)	0.0530	In	In	Out	
Penasquitos Preserve LT	Coast Live Oak Woodland (CLOW)	0.0060	In	In	Out	
Penasquitos Views Trunk Sewer	Southern Willow Scrub (SWS)	0.1920	In	In	Out	
Van Nuys Canyon MH # 91 Sewer Blockage	Mule Fat Scrub (MFS)	0.0700	In	Out	Out	12/04/1996
Van Nuys Installation of 2 36-inch Pipe Culverts	Southern Willow Scrub (SWS)	0.0300	In	Out	Out	02/07/2001
Van Nuys MH #92-76 Four Sewer Breaks (Upper Canyon	Mule Fat Scrub (MFS)	0.1460	In	Out	Out	08/04/2000
Van Nuys MH #92-76 Four Sewer Breaks (Upper Canyon	Disturbed Wetland (DWET)	0.2500	In	Out	Out	08/04/2000

**Marron Valley Cornerstone Lands
Conservation Bank 6.8660**

Upland 6.8660

Upland Bank	Diegan Coastal Sage Scrub (DCSS)	45th & Boston	Non-Native Grassland (NNG)	0.0150	Out	Out	Out
		45th & Boston	Non-Native Grassland (NNG)	0.0550	Out	Out	Out
		54th & Maisel	Southern Mixed Chaparral (SMC)	0.0400	Out	Out	07/05/2001
		60th Street Pipe Relocation/Permanent Access	Diegan Coastal Sage Scrub (DCSS)	0.0950	Out	Out	Out
		60th Street Pipe Relocation/Permanent Access	Non-Native Grassland (NNG)	0.0240	Out	Out	Out
		Alvarado LT	Chamise Chaparral (CC)	0.0850	Out	Out	Out
		Alvarado LT	Southern Mixed Chaparral (SMC)	0.0010	Out	Out	Out
		Alvarado LT	Diegan Coastal Sage Scrub (DCSS)	0.0360	Out	Out	Out
		Alvarado LT	Diegan Coastal Sage Scrub (DCSS)	0.0030	Out	Out	Out
		Alvarado LT	Diegan Coastal Sage Scrub (DCSS)	0.0090	Out	Out	Out
		Alvarado LT	Non-Native Grassland (NNG)	0.0090	Out	Out	Out
		Balboa Terrace Trunk Sewer Replacement	Diegan Coastal Sage Scrub (DCSS)	0.0390	Out	Out	09/16/2012
		Balboa Terrace Trunk Sewer Replacement	Diegan Coastal Sage Scrub (DCSS)	0.3150	Out	Out	09/16/2012
		Buchanan	Southern Mixed Chaparral (SMC)	0.1200	Out	Out	04/30/2002
		Buchanan	Poison Oak Scrub (POS)	0.1300	Out	Out	04/30/2002
		Buchanan	Diegan Coastal Sage Scrub (DCSS)	0.0400	Out	Out	04/30/2002
		Buchanan (10th & Johnson Ave. Emergency Repair)	Diegan Coastal Sage Scrub (DCSS)	0.0300	Out	Out	09/06/2002

Buchanan (10th & Johnson Ave. Emergency Repair)	Diegan Coastal Sage Scrub (DCSS)	0.0600	Out	Out	Out	09/06/2002
Buchanan (10th & Johnson Ave. Emergency Repair)	Diegan Coastal Sage Scrub (DCSS)	0.0300	Out	Out	Out	09/06/2002
Buchanan (10th & Johnson Ave. Emergency Repair)	Diegan Coastal Sage Scrub (DCSS)	0.0100	Out	Out	Out	09/06/2002
Buchanan (Highway 163 & Lincoln Street Emergency)	Southern Mixed Chaparral (SMC)	0.0540	Out	Out	Out	12/16/2003
Buchanan (Highway 163 & Lincoln Street Emergency)	Diegan Coastal Sage Scrub (DCSS)	0.0180	Out	Out	Out	12/16/2003
Buchanan LT	Poison Oak Scrub (POS)	0.0200	Out	Out	Out	
Buchanan LT	Poison Oak Scrub (POS)	0.0060	Out	Out	Out	
Buchanan LT	Southern Mixed Chaparral (SMC)	0.0400	Out	Out	Out	
Buchanan LT	Southern Mixed Chaparral (SMC)	0.0030	Out	Out	Out	
Buchanan/Caminito Fuente	Diegan Coastal Sage Scrub (DCSS)	0.0200	Out	Out	Out	09/15/2004
Dakota Canyon Replacement/Relocation/Access	Diegan Coastal Sage Scrub (DCSS)	0.5700	Out	Out	Out	01/22/2008
Euclid & Menlo (47th & Thorn Sewer Maint & Emerg)	Diegan Coastal Sage Scrub (DCSS)	0.0100	Out	Out	Out	02/01/2004
Euclid & Menlo (47th & Thorn Sewer Maint & Emerg)	Non-Native Grassland (NNG)	0.0500	Out	Out	Out	02/01/2004
Home Ave TS LT	Diegan Coastal Sage Scrub (DCSS)	0.1500	Out	Out	Out	
Hwy 163 North LT	Non-Native Grassland (NNG)	0.1900	Out	Out	Out	
I-805 & 94 Canyon (40th & C Emergency Repair)	Non-Native Grassland (NNG)	0.0110	Out	Out	Out	02/06/2003
I-805 & 94 Canyon (40th & C Emergency Repair)	Southern Mixed Chaparral (SMC)	0.0140	Out	Out	Out	02/06/2003
I-805 & 94 Canyon (40th & C Emergency Repair)	Southern Mixed Chaparral (SMC)	0.0020	Out	Out	Out	02/06/2003
Lexington (Central & Redwood Emergency)	Southern Mixed Chaparral (SMC)	0.0020	Out	Out	Out	
Lexington (Central & Redwood Emergency)	Non-Native Grassland (NNG)	0.1400	Out	Out	Out	01/01/1999
Lexington/Manzanita Pipe and MH Replacement Emer	Southern Mixed Chaparral (SMC)	0.0250	Out	Out	Out	
Lexington/Manzanita Pipe and MH Replacement Emer	Southern Mixed Chaparral (SMC)	0.0250	Out	Out	Out	
Lexington/Manzanita Pipe and MH Replacement Emer	Southern Mixed Chaparral (SMC)	0.0090	Out	Out	Out	
Mission Center LT	Southern Mixed Chaparral (SMC)	0.0400	Out	Out	Out	
Mission Center LT	Diegan Coastal Sage Scrub (DCSS)	0.1400	Out	Out	Out	
Norfolk (Fairmont & Montezuma)	Diegan Coastal Sage Scrub (DCSS)	0.3980	Out	Out	Out	04/22/2002
Norfolk (Fairmont & Montezuma)	Southern Mixed Chaparral (SMC)	0.1060	Out	Out	Out	04/22/2002
Norfolk (Fairmont & Montezuma)	Broom Baccharis Scrub (BBS)	0.0600	Out	Out	Out	04/22/2002
Norfolk (Fairmont & Montezuma)	Poison Oak Scrub (POS)	0.1510	Out	Out	Out	04/22/2002

Norfolk Canyon Maintenance Project	Southern Mixed Chaparral (SMC)	0.0020	Out	Out	Out	
Norfolk Canyon Maintenance Project	Diegan Coastal Sage Scrub (DCSS)	0.3020	Out	Out	Out	
Norfolk LT	Southern Mixed Chaparral (SMC)	0.0200	Out	Out	Out	
Otay Valley TS Pipe Protection	Non-Native Grassland (NNG)	0.0200	Ajacent	Out	Out	
Pump Station 77 A/B Force Main Inspections	Non-Native Grassland (NNG)	0.0200	Out	Out	Out	
Pump Station 77 A/B Force Main Inspections	Diegan Coastal Sage Scrub (DCSS)	0.3480	Out	Out	Out	
Rancho Bernardo 15 East	Diegan Coastal Sage Scrub (DCSS)	0.3100	Out	Out	Out	03/17/2004
Rancho Bernardo 15 East (Escala Emergency)	Diegan Coastal Sage Scrub (DCSS)	0.1000	Out	Out	Out	
Rancho Mission LT	Diegan Coastal Sage Scrub (DCSS)	0.0060	Out	Out	Out	11/19/2013
Shepherd	Diegan Coastal Sage Scrub (DCSS)	0.0100	Out	Out	Out	02/01/2003
Shepherd LT	Non-Native Grassland (NNG)	0.0900	Out	Out	Out	
South Chollas LTA	Diegan Coastal Sage Scrub (DCSS)	0.0470	Out	Out	Out	11/11/2015
South Chollas LTA	Diegan Coastal Sage Scrub (DCSS)	0.3040	Out	Out	Out	11/11/2015
South Chollas LTA	Diegan Coastal Sage Scrub (DCSS)	0.0120	Out	Out	Out	11/11/2015
Stevenson	Poison Oak Scrub (POS)	0.0400	Out	Out	Out	10/01/2001
Stevenson	Diegan Coastal Sage Scrub (DCSS)	0.1200	Out	Out	Out	10/01/2001
Stevenson	Diegan Coastal Sage Scrub (DCSS)	0.0200	Out	Out	Out	10/01/2001
Stevenson Canyon Manhole 138 Emergency	Diegan Coastal Sage Scrub (DCSS)	0.1800	Out	Out	Out	
Stevenson Long Term Access Project	Diegan Coastal Sage Scrub (DCSS)	0.0060	Out	Out	Out	
Stevenson Long Term Access Project	Diegan Coastal Sage Scrub (DCSS)	0.2100	Out	Out	Out	
Stevenson Long Term Access Project	Diegan Coastal Sage Scrub (DCSS)	0.0640	Out	Out	Out	
Trinidad & Euclid	Non-Native Grassland (NNG)	0.1300	Out	Out	Out	05/09/2001
USIU	Southern Mixed Chaparral (SMC)	0.1000	Out	Out	Out	
USIU	Southern Mixed Chaparral (SMC)	0.0500	Out	Out	Out	
USIU	Southern Mixed Chaparral (SMC)	0.0050	Out	Out	Out	
USIU	Diegan Coastal Sage Scrub (DCSS)	0.0500	Out	Out	Out	

USIU	Broom Baccharis Scrub (BBS)	0.0200	Out	Out	Out
USIU	Broom Baccharis Scrub (BBS)	0.0600	Out	Out	Out
USIU	Diegan Coastal Sage Scrub (DCSS)	0.0700	Out	Out	Out
USIU	Non-Native Grassland (NNG)	0.1500	Out	Out	Out
USIU	Non-Native Grassland (NNG)	0.6000	Out	Out	Out

Otay Mesa Mitigation Bank 1.7280

Upland 1.7280

Upland Bank	Maritime Succulent Scrub (MSS)	15 West and Elanus	Diegan Coastal Sage Scrub (DCSS)	0.2000	Out	Out	Out	12/19/2003
		Acuna	Diegan Coastal Sage Scrub (DCSS)	0.0100	Out	Out	Out	07/05/2002
		Acuna	Southern Mixed Chaparral (SMC)	0.0700	Out	Out	Out	07/05/2002
		Bounty & Waring (Bounty & Spear Emergency Repair)	Diegan Coastal Sage Scrub (DCSS)	0.2000	Out	Out	Out	04/29/2003
		Elanus & Murray Canyons (I-15 & Clairemont Mesa Bl	Diegan Coastal Sage Scrub (DCSS)	0.0120	Out	Out	Out	12/11/2002
		Elanus & Murray Canyons (I-15 & Clairemont Mesa Bl	Diegan Coastal Sage Scrub (DCSS)	0.1100	Out	Out	Out	12/11/2002
		Euclid & Menlo (47th & Thorn Sewer Maint & Emerg)	Southern Maritime Chaparral (SMRC)	0.0500	Out	Out	Out	02/01/2004
		Euclid & Menlo Canyon (47th & Thorn Emergency Repa	Southern Mixed Chaparral (SMC)	0.0100	Out	Out	Out	04/29/2002
		Euclid & Menlo Canyon (47th & Thorn Emergency Repa	Non-Native Grassland (NNG)	0.0100	Out	Out	Out	04/29/2002
		Fairmont & Home	Southern Maritime Chaparral (SMRC)	0.1100	Out	Out	Out	04/09/2004
		Fairmont & Home	Non-Native Grassland (NNG)	0.2500	Out	Out	Out	04/09/2004
		Hopkins	Non-Native Grassland (NNG)	0.1400	In	Out	Out	03/17/2004
		Hopkins (Calle Abajo Emergency)	Non-Native Grassland (NNG)	0.0900	In	Out	Out	04/03/2002
		Hwy 163 North LT	Coast Live Oak Woodland (CLOW)	0.0400	Out	Out	Out	
		Isla Vista Emergency Response Project	Diegan Coastal Sage Scrub (DCSS)	0.0600	Out	Out	Out	05/17/2004
		Norfolk (Fairmont & Montezuma)	Scrub Oak Chaparral (SOC)	0.0460	Out	Out	Out	04/22/2002
		Rancho Bernardo 15 East	Diegan Coastal Sage Scrub (DCSS)	0.3100	Out	Out	Out	03/17/2004
		South Juniper Emergency Project	Diegan Coastal Sage Scrub (DCSS)	0.0010	Out	Out	Out	05/14/2006
		Switzer MH 152 Access	Scrub Oak Chaparral (SOC)	0.0090	Out	Out	Out	01/29/2014

Penasquitos Eucalyptus Removal 0.3100

Wetland 0.3100

Wetland Creation/Restoration	Riparian Forest (RF)	Carroll and Mesa Rim	Riparian Woodland (RW)	0.3100	In	Out	Out	06/02/2003
------------------------------	----------------------	----------------------	------------------------	--------	----	-----	-----	------------

Rancho Mission Enhancement 2.1322

Wetland 2.1322

Wetland Enhancement	Southern Willow Scrub (SWS)	15 West and Elanus	Southern Willow Scrub (SWS)	0.0500	In	Out	Out	12/19/2003
		Alvarado Court Sewer Crossing	Southern Willow Scrub (SWS)	0.0050	In	Out	Out	
		Alvarado LT	Mule Fat Scrub (MFS)	0.0020	In	Out	Out	
		Alvarado LT	Southern Willow Scrub (SWS)	0.0250	In	Out	Out	
		Alvarado LT	Freshwater Marsh (FM)	0.0060	In	Out	Out	
		Alvarado LT	Southern Willow Scrub (SWS)	0.0010	In	Out	Out	
		Alvarado Trunk Sewer	Disturbed Wetland (DWET)	0.0220	In	Out	Out	
		Barr Avenue (Hotel Circle) part of Dove Canyon	Non-Vegetated Channel (NVC)	0.0100	In	Out	Out	08/16/2003
		Bay View Emergency Response Project	Non-Vegetated Channel (NVC)	0.0130	Ajacent	Out	Out	08/20/2004
		Buchanan	Disturbed Wetland (DWET)	0.3220	In	Out	Out	04/30/2002
		Buchanan	Southern Willow Scrub (SWS)	0.0108	In	Out	Out	04/30/2002
		Buchanan B	Non-Vegetated Channel (NVC)	0.0200	In	Out	Out	
		Buchanan LT	Non-Vegetated Channel (NVC)	0.6240	In	Out	Out	
		Buchanan LT	Disturbed Wetland (DWET)	0.0600	In	Out	Out	
		Buchanan Sewer Blockage Emergency	Southern Willow Scrub (SWS)	0.0080	In	Out	Out	
		Buchanan Sewer Blockage Emergency	Southern Willow Scrub (SWS)	0.0030	In	Out	Out	
		Chollas Dam Vegetation Removal	Freshwater Marsh (FM)	0.0220	Ajacent	Out	Out	
		Chollas Exposed Water Main Repair	Riparian Scrub (RS)	0.0140	Ajacent	Out	Out	
		Delevan & I-15 Emerg Repair (South Juniper Canyon)	Non-Vegetated Channel (NVC)	0.0300	Ajacent	Out	Out	
		Elanus & Murray Canyons (I-15 & Clairemont Mesa Bl	Southern Willow Scrub (SWS)	0.0070	In	Out	Out	12/11/2002
		Elanus (I-15 & Clairemont Mesa Blvd) LT	Emergent Wetland (EW)	0.0050	In	Out	Out	
		Euclid & Menlo (47th & Thorn Sewer Maint & Emerg)	Disturbed Wetland (DWET)	0.0800	Ajacent	Out	Out	02/01/2004
		Euclid & Menlo (47th & Thorn Sewer Maint & Emerg)	Non-Vegetated Channel (NVC)	0.0100	Ajacent	Out	Out	02/01/2004
		Euclid & Menlo Canyon (47th & Thorn Emergency Repa	Non-Vegetated Channel (NVC)	0.0011	Ajacent	Out	Out	04/29/2002
		Euclid and Menlo Emerg Pipe Protection	Non-Vegetated Channel (NVC)	0.0050	Ajacent	Out	Out	
		Federal & Chollas	Disturbed Wetland (DWET)	0.0008	Ajacent	Out	Out	
		Fox Canyon (University & 49th) Emergency Repair	Non-Vegetated Channel (NVC)	0.0020	Ajacent	Out	Out	
		Hopkins	Disturbed Wetland (DWET)	0.0200	Out	Out	Out	03/17/2004
		Hopkins (Calle Abajo Emergency)	Non-Vegetated Channel (NVC)	0.0020	Out	Out	Out	04/03/2002
		Huckleberry (32nd St Canyon Emergency Maintenance)	Disturbed Wetland (DWET)	0.0400	Ajacent	Out	Out	07/22/2003
		Hwy 163 Corridor (7th & Brookes 2002Emergency Repa	Non-Vegetated Channel (NVC)	0.0200	Ajacent	Out	Out	11/26/2003
		Hwy 163 North LT	Non-Vegetated Channel (NVC)	0.0010	Ajacent	Out	Out	

I-15 & Adams	Emergent Wetland (EW)	0.0040	In	Out	Out	05/06/2004
I-15 & Adams	Non-Vegetated Channel (NVC)	0.0500	In	Out	Out	05/06/2004
I-15 & Adams	Non-Vegetated Channel (NVC)	0.0200	In	Out	Out	05/06/2004
I-805 & 94 Canyon (40th & C Emergency Repair)	Non-Vegetated Channel (NVC)	0.0013	Ajacent	Out	Out	02/06/2003
Isla Vista Emergency Response Project	Non-Vegetated Channel (NVC)	0.0030	Ajacent	Out	Out	
Lexington/Manzanita Pipe and MH Replacement Emer	Non-Vegetated Channel (NVC)	0.0160	Ajacent	Out	Out	
Lexington/Manzanita Pipe Encasement Emergency	Non-Vegetated Channel (NVC)	0.0001	Ajacent	Out	Out	
Lexington/Manzanita Pipe Encasement Emergency	Non-Vegetated Channel (NVC)	0.0050	Ajacent	Out	Out	
Market & Euclid (MH 88 Repair at Encanto Creek)	Southern Willow Scrub (SWS)	0.0030	Ajacent	Out	Out	
Mission Center Canyon B	Riparian Scrub (RS)	0.0250	In	Out	Out	
Mission Center Canyon B	Emergent Wetland (EW)	0.0200	In	Out	Out	
Mission Center Canyon B	Disturbed Wetland (DWET)	0.0140	In	Out	Out	
Mission Center Canyon Emergency Sewer Repair	Southern Willow Scrub (SWS)	0.0030	In	Out	Out	
Mission Center Canyon Emergency Sewer Repair	Southern Willow Scrub (SWS)	0.0010	In	Out	Out	
Mission Center Canyon Emergency Sewer Repair	Non-Vegetated Channel (NVC)	0.0020	In	Out	Out	
Mission Center Canyon Emergency Sewer Repair	Non-Vegetated Channel (NVC)	0.0120	In	Out	Out	
Mission Center Canyon Emergency Sewer Repair	Disturbed Wetland (DWET)	0.0010	In	Out	Out	
Mission Center Canyon Emergency Sewer Repair	Disturbed Wetland (DWET)	0.0050	In	Out	Out	
Mission Center Canyon Emergency Sewer Repair	Freshwater Marsh (FM)	0.0160	In	Out	Out	
Mission Center Canyon Emergency Sewer Repair	Freshwater Marsh (FM)	0.0070	In	Out	Out	
Murphy Canyon MH114 Locate and Raise	Southern Willow Scrub (SWS)	0.0140	In	Out	Out	08/24/2015
Murphy Canyon TS Access and Repair	Freshwater Marsh (FM)	0.0340	In	Out	Out	06/20/2014
Norfolk (Fairmont & Montezuma)	Non-Vegetated Channel (NVC)	0.0420	In	Out	Out	04/22/2002
Norfolk (Fairmont & Montezuma)	Southern Willow Scrub (SWS)	0.0030	In	Out	Out	04/22/2002
Norfolk Canyon Maintenance Project	Non-Vegetated Channel (NVC)	0.0020	In	Out	Out	
Presidio (Palm Cyn) GJ665	Riparian Scrub (RS)	0.1650	In	Out	Out	
Presidio (Palm Cyn) GJ665	Non-Vegetated Channel (NVC)	0.0017	In	Out	Out	
Presidio (Palm Cyn) GJ665	Non-Vegetated Channel (NVC)	0.0120	In	Out	Out	
Rancho Mission (Mission Gorge Canyon, Conestoga Co)	Non-Vegetated Channel (NVC)	0.0080	In	Out	Out	02/07/2002
Rancho Mission (Mission Gorge Canyon, Conestoga Co)	Disturbed Wetland (DWET)	0.0050	In	Out	Out	02/07/2002
Rancho Mission LT	Southern Willow Scrub (SWS)	0.0070	In	Out	Out	
San Diego Mission Rd Emergency	Southern Willow Scrub (SWS)	0.0100	In	Out	Out	
San Diego Mission Rd Emergency	Freshwater Marsh (FM)	0.0100	In	Out	Out	

Shepherd	Southern Willow Scrub (SWS)	0.0100	In	Out	Out	02/01/2003
Shepherd LT	Disturbed Wetland (DWET)	0.0150	In	Out	Out	
Shepherd LT	Riparian Woodland (RW)	0.0600	In	Out	Out	
Shepherd LT	Riparian Scrub (RS)	0.0200	In	Out	Out	
Shepherd LT	Non-Vegetated Channel (NVC)	0.0300	In	Out	Out	
South Juniper Emergency Project	Non-Vegetated Channel (NVC)	0.0200	Ajacent	Out	Out	
Valencia Canyon Emergency Repair & Maintenance	Non-Vegetated Channel (NVC)	0.0014	Ajacent	Out	Out	01/25/2003
Valencia Canyon Emergency Repair & Maintenance	Mule Fat Scrub (MFS)	0.0040	Ajacent	Out	Out	01/25/2003
Willow St. Canyon	Non-Vegetated Channel (NVC)	0.0040	Ajacent	Out	Out	
Woodman Canyon Emergency Sewer Access and Repair	Non-Vegetated Channel (NVC)	0.0040	Ajacent	Out	Out	01/06/2005

Rose Canyon Wetland and Upland 6.0258

Upland 2.2450

Upland Restoration	Coastal Sage Scrub (CSS)	I-5/SR-52 Maintenance Project	Non-Native Grassland (NNG)	0.0100	In	In	Out	
		I-5/SR-52 Maintenance Project	Diegan Coastal Sage Scrub (DCSS)	0.0200	In	In	Out	
		Middle Rose Creek (ER Repair - Rose W of Genesee)	Diegan Coastal Sage Scrub (DCSS)	0.0600	In	In	Out	12/01/2002
		Middle Rose Creek (ER Repair - Rose W of Genesee)	Non-Native Grassland (NNG)	0.0400	In	In	Out	12/01/2002
		Miramar Trunk Sewer Replacement Project	Southern Mixed Chaparral (SMC)	0.0010	In	Out	Out	07/06/2007
		Miramar Trunk Sewer Replacement Project	Diegan Coastal Sage Scrub (DCSS)	0.0060	In	Out	Out	07/06/2007
		Miramar Trunk Sewer Replacement Project	Diegan Coastal Sage Scrub (DCSS)	0.1480	In	Out	Out	07/06/2007
		Miramar Trunk Sewer Replacement Project	Poison Oak Scrub (POS)	0.0760	In	Out	Out	07/06/2007
		Miramar Trunk Sewer Replacement Project	Poison Oak Scrub (POS)	0.0065	In	Out	Out	07/06/2007
		Miramar Trunk Sewer Replacement Project	Non-Native Grassland (NNG)	0.0120	In	Out	Out	07/06/2007
		Miramar Trunk Sewer Replacement Project	Non-Native Grassland (NNG)	0.0825	In	Out	Out	07/06/2007
		Miramar Trunk Sewer Replacement Project	Broom Baccharis Scrub (BBS)	0.3390	In	Out	Out	07/06/2007
		Miramar Trunk Sewer Replacement Project	Broom Baccharis Scrub (BBS)	0.5920	In	Out	Out	07/06/2007
		Old Rose Canyon Sewer Relocation Project	Non-Native Grassland (NNG)	0.0450	In	Out	Out	02/08/2011
		Penasquitos Bluffs (Finger Canyon Emergency)	Scrub Oak Chaparral (SOC)	0.1400	In	Out	Out	11/01/2000
		Penasquitos Bluffs (Finger Canyon Emergency)	Scrub Oak Chaparral (SOC)	0.1600	In	Out	Out	11/01/2000
		Penasquitos View Emergency	Diegan Coastal Sage Scrub (DCSS)	0.0100	In	Out	Out	08/18/2004
		Rose Canyon ER Repairs between 9/01 and 5/03	Diegan Coastal Sage Scrub (DCSS)	0.1300	In	In	Out	09/01/2001
		Rose Canyon ER Repairs between 9/01 and 5/03	Non-Native Grassland (NNG)	0.2000	In	In	Out	09/01/2001

		Rose Canyon ER Repairs between 9/01 and 5/03	Poison Oak Scrub (POS)	0.0500	In	In	Out	09/01/2001
		Rose Canyon ER Repairs between 9/01 and 5/03	Broom Baccharis Scrub (BBS)	0.0300	In	In	Out	09/01/2001
	Native Grassland (NG)	Miramar Trunk Sewer Replacement Project	Coast Live Oak Woodland (CLOW)	0.0070	In	Out	Out	07/06/2007
		Miramar Trunk Sewer Replacement Project	Coast Live Oak Woodland (CLOW)	0.0120	In	Out	Out	07/06/2007
		Miramar Trunk Sewer Replacement Project	Native Grassland (NG)	0.0380	In	Out	Out	07/06/2007
		Miramar Trunk Sewer Replacement Project	Scrub Oak Chaparral (SOC)	0.0100	In	Out	Out	07/06/2007
		Penasquitos Bluffs (Finger Canyon Emergency)	Valley Needlegrass Grassland (VNG)	0.0200	In	Out	Out	11/01/2000

Wetland 3.7808

Wetland Creation/Restoration	Riparian Forest (RF)	Black Mtn Access Rd Repair	Streambed (STREAMBED)	0.0240	In	Out	Out	
		Black Mtn Access Rd Repair	Streambed (STREAMBED)	0.0140	In	Out	Out	
		Dakota Canyon Manhole Repairs - Emergency	Waters of the U.S.	0.0001	In	Out	Out	12/16/2015
		Dakota Canyon Manhole Repairs - Emergency	Waters of the U.S.	0.0005	In	Out	Out	12/16/2015
		I-5/SR-52 Maintenance Project	Southern Willow Scrub (SWS)	0.0300	In	In	Out	
		Lower Rose Canyon Emergency Repairs (MH 15)	Coastal and Valley Freshwater Marsh (CVFM)	0.2100	In	Out	Out	05/04/2005
		Lower Rose Canyon Emergency Repairs (MH 15)	Emergent Wetland (EW)	0.0050	In	Out	Out	05/04/2005
		Lower Rose Canyon Emergency Repairs (MH 15)	Mule Fat Scrub (MFS)	0.1100	In	Out	Out	05/04/2005
		Lower Rose Canyon Emergency Repairs (MH 15)	Southern Willow Scrub (SWS)	0.3200	In	Out	Out	05/04/2005
		Middle Rose Cyn MH 160 Emergency	Non-Vegetated Channel (NVC)	0.0200	In	In	Out	12/01/2011
		Middle Rose Cyn MH 160 Emergency	Southern Willow Scrub (SWS)	0.0200	In	In	Out	12/01/2011
		Miramar Trunk Sewer Replacement Project	Southern Willow Scrub (SWS)	0.0480	In	Out	Out	07/06/2007
		Miramar Trunk Sewer Replacement Project	Mule Fat Scrub (MFS)	0.2620	In	Out	Out	07/06/2007
		Miramar Trunk Sewer Replacement Project	Mule Fat Scrub (MFS)	0.0440	In	Out	Out	07/06/2007
		Miramar Trunk Sewer Replacement Project	Riparian Woodland (RW)	0.1200	In	Out	Out	07/06/2007
		Miramar Trunk Sewer Replacement Project	Herbaceous Wetland (HW)	0.1580	In	Out	Out	07/06/2007
		Miramar Trunk Sewer Replacement Project	Mule Fat Scrub (MFS)	0.4120	In	Out	Out	07/06/2007
		Miramar Trunk Sewer Replacement Project	Mule Fat Scrub (MFS)	0.2260	In	Out	Out	07/06/2007
		Miramar Trunk Sewer Replacement Project	Southern Willow Scrub (SWS)	0.0320	In	Out	Out	07/06/2007
		Miramar Trunk Sewer Replacement Project	Southern Willow Scrub (SWS)	0.0540	In	Out	Out	07/06/2007
		Miramar Trunk Sewer Replacement Project	Southern Willow Scrub (SWS)	0.0540	In	Out	Out	07/06/2007
		Miramar Trunk Sewer Replacement Project	Southern Willow Scrub (SWS)	0.0490	In	Out	Out	07/06/2007
		Miramar Trunk Sewer Replacement Project	Southern Willow Scrub (SWS)	0.0490	In	Out	Out	07/06/2007

		Miramar Trunk Sewer Replacement Project	Southern Willow Scrub (SWS)	0.0240	In	Out	Out	07/06/2007
		Miramar Trunk Sewer Replacement Project	Southern Willow Scrub (SWS)	0.0090	In	Out	Out	07/06/2007
		Miramar Trunk Sewer Replacement Project	Riparian Woodland (RW)	0.1530	In	Out	Out	07/06/2007
		Miramar Trunk Sewer Replacement Project	Riparian Woodland (RW)	0.0270	In	Out	Out	07/06/2007
		Miramar Trunk Sewer Replacement Project	Mule Fat Scrub (MFS)	0.0550	In	Out	Out	07/06/2007
		Miramar Trunk Sewer Replacement Project	Mule Fat Scrub (MFS)	0.0050	In	Out	Out	07/06/2007
		Miramar Trunk Sewer Replacement Project	Mule Fat Scrub (MFS)	0.0030	In	Out	Out	07/06/2007
		Miramar Trunk Sewer Replacement Project	Riparian Woodland (RW)	0.0060	In	Out	Out	07/06/2007
		Miramar Trunk Sewer Replacement Project	Riparian Woodland (RW)	0.0440	In	Out	Out	07/06/2007
		Miramar Trunk Sewer Replacement Project	Riparian Woodland (RW)	0.1700	In	Out	Out	07/06/2007
		Miramar Trunk Sewer Replacement Project	Southern Coast Live Oak Riparian Forest (SCLORF)	0.1050	In	Out	Out	07/06/2007
		Miramar Trunk Sewer Replacement Project	Southern Coast Live Oak Riparian Forest (SCLORF)	0.0660	In	Out	Out	07/06/2007
		Monte Verde Sewer Improvements	Southern Riparian Forest (SRF)	0.0200	In	In	Out	
		Monte Verde Sewer Improvements	Southern Riparian Forest (SRF)	0.0200	In	In	Out	
		Nobel Drive MH97 Emergency	Mule Fat Scrub (MFS)	0.0047	In	Out	Out	02/02/2015
		Old Rose Canyon Sewer Relocation Project	Southern Willow Scrub (SWS)	0.0400	In	Out	Out	02/08/2011
		Old Rose Canyon Sewer Relocation Project	Mule Fat Scrub (MFS)	0.0070	In	Out	Out	02/08/2011
		Old Rose Canyon Sewer Relocation Project	Freshwater Marsh (FM)	0.0020	In	Out	Out	02/08/2011
		Rose Canyon ER Repairs between 9/01 and 5/03	Mule Fat Scrub (MFS)	0.0300	In	In	Out	09/01/2001
		Rose Canyon ER Repairs between 9/01 and 5/03	Riparian Woodland (RW)	0.0200	In	In	Out	09/01/2001
		Rose Canyon ER Repairs between 9/01 and 5/03	Southern Willow Scrub (SWS)	0.0300	In	In	Out	09/01/2001
		Rose Canyon ER Repairs between 9/01 and 5/03	Non-Vegetated Channel (NVC)	0.0018	In	In	Out	09/01/2001
		Rose Creek East of I-805 (Miramar Rd & Commerce Av) Emergency	Non-Vegetated Channel (NVC)	0.1200	In	Out	Out	02/20/2002
		Rose Creek Emergency Bypass Project	Non-Vegetated Channel (NVC)	0.0050	In	In	Out	
Wetland Enhancement	Riparian Forest (RF)	Lower Rose Canyon Emergency Repairs (MH 15)	Mule Fat Scrub (MFS)	0.1100	In	Out	Out	05/04/2005
		Lower Rose Canyon Emergency Repairs (MH 15)	Emergent Wetland (EW)	0.0050	In	Out	Out	05/04/2005
		Lower Rose Canyon Emergency Repairs (MH 15)	Coastal and Valley Freshwater Marsh (CVFM)	0.2100	In	Out	Out	05/04/2005
		Miramar Trunk Sewer Replacement Project	Mule Fat Scrub (MFS)	0.0050	In	Out	Out	07/06/2007
		Miramar Trunk Sewer Replacement Project	Mule Fat Scrub (MFS)	0.0030	In	Out	Out	07/06/2007
		Miramar Trunk Sewer Replacement Project	Southern Willow Scrub (SWS)	0.0090	In	Out	Out	07/06/2007
		Miramar Trunk Sewer Replacement Project	Southern Willow Scrub (SWS)	0.0320	In	Out	Out	07/06/2007

Miramar Trunk Sewer Replacement Project	Riparian Woodland (RW)	0.0880	In	Out	Out	07/06/2007
Miramar Trunk Sewer Replacement Project	Riparian Woodland (RW)	0.0850	In	Out	Out	07/06/2007
Nobel Drive MH97 Emergency	Mule Fat Scrub (MFS)	0.0047	In	Out	Out	02/02/2015

San Clemente Wetland and Upland 3.7445

Upland 1.7445

Upland Restoration	Coast Live Oak Woodland (CLOW)	San Clemente Canyon Access Path LT Project	Coast Live Oak Woodland (CLOW)	0.1500	In	In	Out	
		San Clemente Canyon Access Path LT Project	Coast Live Oak Woodland (CLOW)	0.0390	In	In	Out	
	Coastal Sage Scrub (CSS)	Gesner LT	Diegan Coastal Sage Scrub (DCSS)	0.1000	In	Out	Out	
		Gesner/Huron	Non-Native Grassland (NNG)	0.0100	In	Out	Out	08/01/1998
		Penasquitos Bluffs (Finger Canyon Emergency)	Non-Native Grassland (NNG)	0.0300	In	Out	Out	11/01/2000
		Penasquitos Bluffs (Finger Canyon Emergency)	Chamise Chaparral (CC)	0.0200	In	Out	Out	11/01/2000
		Penasquitos Bluffs (Finger Canyon Emergency)	Diegan Coastal Sage Scrub (DCSS)	0.4200	In	Out	Out	11/01/2000
		Penasquitos Bluffs (Finger Canyon Emergency)	Diegan Coastal Sage Scrub (DCSS)	0.2700	In	Out	Out	11/01/2000
		Penasquitos Bluffs (Finger Canyon Emergency)	Diegan Coastal Sage Scrub (DCSS)	0.0200	In	Out	Out	11/01/2000
		San Clemente (Emergency Repairs Combined)	Diegan Coastal Sage Scrub (DCSS)	0.0510	In	In	Out	09/17/2001
		San Clemente (Emergency Repairs Combined)	Non-Native Grassland (NNG)	0.0050	In	In	Out	09/17/2001
		San Clemente Canyon Access Path LT Project	Diegan Coastal Sage Scrub (DCSS)	0.0190	In	In	Out	
		San Clemente Canyon Access Path LT Project	Diegan Coastal Sage Scrub (DCSS)	0.0260	In	In	Out	
		San Clemente Canyon Biltmore Pipe Protection Emerg	Southern Mixed Chaparral (SMC)	0.0100	In	In	Out	11/30/2006
		San Clemente Canyon Biltmore Pipe Protection Emerg	Non-Native Grassland (NNG)	0.0510	In	In	Out	11/30/2006
		San Clemente Canyon Biltmore Pipe Protection Emerg	Diegan Coastal Sage Scrub (DCSS)	0.0100	In	In	Out	11/30/2006
		San Clemente LT MH #4	Poison Oak Scrub (POS)	0.0180	In	In	Out	07/24/2010
		San Clemente LT MH #4	Non-Native Grassland (NNG)	0.0580	In	In	Out	07/24/2010
		Wet Weather Stream Discharge	Diegan Coastal Sage Scrub (DCSS)	0.1950	In	Out	Out	
		Wet Weather Stream Discharge	Diegan Coastal Sage Scrub (DCSS)	0.1850	In	Out	Out	
		Wet Weather Stream Discharge	Southern Mixed Chaparral (SMC)	0.0375	In	Out	Out	
		Wet Weather Stream Discharge	Southern Mixed Chaparral (SMC)	0.0200	In	Out	Out	

Wetland 2.0000

Wetland Creation/Restoration	Riparian Forest (RF)	Balboa Terrace Trunk Sewer Replacement	Oak Riparian Forest (ORF)	0.0030	In	Out	Out	09/16/2012
		Balboa Terrace Trunk Sewer Replacement	Southern Willow Scrub (SWS)	0.0640	In	Out	Out	09/16/2012
		Balboa Terrace Trunk Sewer Replacement	Disturbed Wetland (DWET)	0.1070	In	Out	Out	09/16/2012
		Balboa Terrace Trunk Sewer Replacement	Mule Fat Scrub (MFS)	0.0220	In	Out	Out	09/16/2012
		Balboa Terrace Trunk Sewer Replacement	Freshwater Marsh (FM)	0.0160	In	Out	Out	09/16/2012
		Balboa Terrace Trunk Sewer Replacement	Non-Vegetated Channel (NVC)	0.0140	In	Out	Out	09/16/2012
		Balboa Terrace Trunk Sewer Replacement	Freshwater Marsh (FM)	0.0240	In	Out	Out	
		Balboa Terrace Trunk Sewer Replacement	Disturbed Wetland (DWET)	0.0680	In	Out	Out	
		Carroll Canyon Emergency Sewer Repair	Non-Vegetated Channel (NVC)	0.0100	In	Out	Out	02/26/2010
		Carroll Canyon Emergency Sewer Repair	Southern Arroyo Willow Riparian Forest (SAWRF)	0.0300	In	Out	Out	02/26/2010
		Dakota Canyon Replacement/Relocation/Access	Non-Vegetated Channel (NVC)	0.0300	In	Out	Out	01/22/2008
		East Tecolote Canyon Pipe Encasemt Protection Proj	Open Water (OW)	0.0230	In	Out	Out	10/04/2010
		East Tecolote Canyon Pipe Encasemt Protection Proj	Southern Willow Scrub (SWS)	0.0360	In	Out	Out	10/04/2010
		East Tecolote Canyon Pipe Encasemt Protection Proj	Southern Riparian Forest (SRF)	0.0300	In	Out	Out	10/04/2010
		Penasquitos Bluffs LT	Freshwater Marsh (FM)	0.0140	In	Out	Out	
		Penasquitos Bluffs LT	Alkali Marsh (AM)	0.0100	In	Out	Out	
		Penasquitos Bluffs LT	Alkali Marsh (AM)	0.0040	In	Out	Out	
		Penasquitos Bluffs LT	Southern Willow Scrub (SWS)	0.0030	In	Out	Out	
		Penasquitos Bluffs LT	Southern Willow Scrub (SWS)	0.0070	In	Out	Out	
		San Clemente Canyon Access Path LT Project	Southern Coast Live Oak Riparian Forest (SCLORF)	0.3200	In	In	Out	
		San Clemente Canyon Access Path LT Project	Southern Cottonwood-Willow Riparian Forest (SCWRF)	0.1330	In	Out	Out	
		San Clemente Canyon Access Path LT Project	Southern Cottonwood-Willow Riparian Forest (SCWRF)	0.5520	In	In	Out	
		San Clemente Canyon Biltmore Pipe Protection Emerg	Non-Vegetated Channel (NVC)	0.0040	In	Out	Out	11/30/2006
		San Clemente Canyon Biltmore Pipe Protection Emerg	Southern Coast Live Oak Riparian Forest (SCLORF)	0.1170	In	In	Out	11/30/2006
		San Clemente Canyon Mitigation Project	Southern Coast Live Oak Riparian Forest (SCLORF)	0.0030	In	In	In	09/15/2007
		San Clemente Emergency Sewer Encasement Repair	Southern Coast Live Oak Riparian Forest (SCLORF)	0.0200	In	Out	Out	12/13/2010
		San Clemente Emergency Sewer Encasement Repair	Non-Vegetated Channel (NVC)	0.0100	In	Out	Out	12/13/2010
		Soledad Valley Water Line Break	Alkali Marsh (AM)	0.2000	In	Out	Out	03/23/2009
		Stevenson Long Term Access Project	Southern Willow Scrub (SWS)	0.0280	In	Out	Out	
		Stevenson Long Term Access Project	Mule Fat Scrub (MFS)	0.0850	In	Out	Out	

Streambed (STREAMBED)	Wet Weather Stream Discharge	Non-Vegetated Channel (NVC)	0.0020	In		Out	Out
	Wet Weather Stream Discharge	Non-Vegetated Channel (NVC)	0.0110	In		Out	Out

Tecolote - Tree of Heaven removal 0.2500

Wetland 0.2500

Wetland Enhancement	Riparian Forest (RF)	Tecolote	Southern Coast Live Oak Riparian Forest (SCLORF)	0.2500	In	In	Out	02/28/2001
---------------------	----------------------	----------	--	--------	----	----	-----	------------

Tecolote Canyon Wetland and Upland 4.1798

Upland 3.1058

Upland Restoration	Coastal Sage Scrub (CSS)	East Tecolote (East Clairemont)	Diegan Coastal Sage Scrub (DCSS)	0.0120	In	Out	Out	01/08/2002
		East Tecolote (East Clairemont) LT	Diegan Coastal Sage Scrub (DCSS)	0.0020	In	Out	Out	
		East Tecolote (East Clairemont) LT	Poison Oak Scrub (POS)	0.0030	In	Out	Out	
		East Tecolote (East Clairemont) LT	Poison Oak Scrub (POS)	0.0120	In	Out	Out	
		East Tecolote Emergency MH 218	Diegan Coastal Sage Scrub (DCSS)	0.0270	In	Out	Out	
		East Tecolote Manholes 223 and 224 Emergency	Diegan Coastal Sage Scrub (DCSS)	0.0090	In	Out	Out	
		Manning Canyon Sewer Repair	Diegan Coastal Sage Scrub (DCSS)	0.0020	In	Out	Out	
		Manning Street Sewer Repair	Non-Native Grassland (NNG)	0.1000	In	Out	Out	07/06/2001
		Manning Street Sewer Repair	Diegan Coastal Sage Scrub (DCSS)	0.9000	In	Out	Out	07/06/2001
		Manning Street Sewer Repair	Diegan Coastal Sage Scrub (DCSS)	0.1000	In	Out	Out	07/06/2001
		Park Mesa LT	Non-Native Grassland (NNG)	0.0040	In	Out	Out	
		Park Mesa LT	Non-Native Grassland (NNG)	0.0050	In	Out	Out	
		Park Mesa LT	Southern Mixed Chaparral (SMC)	0.0150	In	Out	Out	
		Park Mesa LT	Diegan Coastal Sage Scrub (DCSS)	0.1080	In	Out	Out	
		Park Mesa Way	Broom Baccharis Scrub (BBS)	0.0400	In	Out	Out	01/13/2000
		Stevenson Canyon MH 257 Emergency	Diegan Coastal Sage Scrub (DCSS)	0.0048	In	Out	Out	
		Tecolote	Diegan Coastal Sage Scrub (DCSS)	0.0700	In	In	Out	02/28/2001
		Tecolote	Poison Oak Scrub (POS)	0.0300	In	In	Out	02/28/2001
		Tecolote (including Mt. Elbrus)	Diegan Coastal Sage Scrub (DCSS)	0.2300	In	In	Out	11/18/2002
		Tecolote (including Mt. Elbrus)	Diegan Coastal Sage Scrub (DCSS)	0.0200	In	In	Out	11/18/2002
		Tecolote (including Mt. Elbrus)	Non-Native Grassland (NNG)	0.0500	In	In	Out	11/18/2002

		Tecolote 8 inch CI Sewer Main Replacement	Diegan Coastal Sage Scrub (DCSS)	0.0150	In	In	Out	
		Tecolote 8 inch CI Sewer Main Replacement	Diegan Coastal Sage Scrub (DCSS)	0.0030	In	In	Out	
		Tecolote 8 inch CI Sewer Main Replacement	Non-Native Grassland (NNG)	0.1000	In	In	Out	
		Tecolote Canyon Mitigation Project	Poison Oak Scrub (POS)	0.6500	In	In	In	
		Tecolote Emergency Pipe Repair (Crossing)	Diegan Coastal Sage Scrub (DCSS)	0.0040	In	In	Out	
		Tecolote LT	Diegan Coastal Sage Scrub (DCSS)	0.4000	In	In	Out	
		Tecolote Pipe Repair Near Manhole 346	Diegan Coastal Sage Scrub (DCSS)	0.0240	In	In	Out	
		Tecolote Pipe Repair Near Manhole 346	Non-Native Grassland (NNG)	0.1100	In	In	Out	
	Native Grassland (NG)	East Tecolote (East Clairemont) LT	Scrub Oak Chaparral (SOC)	0.0160	In	Out	Out	
		East Tecolote (East Clairemont) LT	Scrub Oak Chaparral (SOC)	0.0220	In	Out	Out	
		East Tecolote Manholes 223 and 224 Emergency	Coast Live Oak Woodland (CLOW)	0.0180	In	Out	Out	

Wetland 1.0740

Wetland Creation/Restoration	Riparian Forest (RF)	East Tecolote (East Clairemont)	Southern Coast Live Oak Riparian Forest (SCLORF)	0.0040	In	Out	Out	01/08/2002
		East Tecolote (East Clairemont)	Southern Willow Scrub (SWS)	0.0001	In	Out	Out	01/08/2002
		East Tecolote (East Clairemont) LT	Freshwater Marsh (FM)	0.0080	In	Out	Out	
		East Tecolote (East Clairemont) LT	Freshwater Marsh (FM)	0.0010	In	Out	Out	
		East Tecolote (East Clairemont) LT	Southern Riparian Forest (SRF)	0.0610	In	Out	Out	
		East Tecolote (East Clairemont) LT	Southern Riparian Forest (SRF)	0.0040	In	Out	Out	
		East Tecolote (East Clairemont) LT	Non-Vegetated Channel (NVC)	0.0020	In	Out	Out	
		East Tecolote (East Clairemont) LT	Southern Riparian Forest (SRF)	0.0270	In	Out	Out	
		East Tecolote (East Clairemont) LT	Non-Vegetated Channel (NVC)	0.0060	In	Out	Out	
		East Tecolote (East Clairemont) LT	Freshwater Marsh (FM)	0.0020	In	Out	Out	
		East Tecolote Emergency MH 218	Southern Riparian Forest (SRF)	0.0480	In	Out	Out	
		East Tecolote Emergency MH 218	Non-Vegetated Channel (NVC)	0.0070	In	Out	Out	
		East Tecolote Manholes 223 and 224 Emergency	Non-Vegetated Channel (NVC)	0.0150	In	Out	Out	
		East Tecolote Manholes 223 and 224 Emergency	Freshwater Marsh (FM)	0.0390	In	Out	Out	
		East Tecolote Manholes 223 and 224 Emergency	Southern Riparian Forest (SRF)	0.0340	In	Out	Out	
		Tecolote (including Mt. Elbrus)	Southern Coast Live Oak Riparian Forest (SCLORF)	0.0200	In	In	Out	11/18/2002
		Tecolote Emergency Pipe Repair (Crossing)	Southern Coast Live Oak Riparian Forest (SCLORF)	0.0020	In	In	Out	

		Tecolote Emergency Pipe Repair (Crossing)	Emergent Wetland (EW)	0.0020	In	In	Out	
		Tecolote LT	Mule Fat Scrub (MFS)	0.0100	In	In	Out	
		Tecolote LT	Southern Riparian Forest (SRF)	0.3410	In	In	Out	
		Tecolote MH 101 Emergency	Mule Fat Scrub (MFS)	0.0005	In	In	Out	
		Tecolote MH 101 Emergency	Non-Vegetated Channel (NVC)	0.0034	In	In	Out	
		Tecolote Mt. Ashmun Pipe Protection Emergency	Riparian Forest (RF)	0.0100	In	In	Out	01/17/2008
		Tecolote Mt. Ashmun Pipe Protection Erosion Contro	Riparian Forest (RF)	0.0020	In	In	Out	
		Tecolote North Exposed TS Emergency	Non-Vegetated Channel (NVC)	0.0010	In	In	Out	
		Tecolote Pipe Repair Near Manhole 346	Southern Riparian Forest (SRF)	0.0350	In	In	Out	
	Southern Willow Scrub (SWS)	East Tecolote (East Clairemont) LT	Southern Willow Scrub (SWS)	0.0010	In	Out	Out	
		East Tecolote (East Clairemont) LT	Southern Willow Scrub (SWS)	0.0030	In	Out	Out	
		East Tecolote (East Clairemont) LT	Southern Willow Scrub (SWS)	0.0100	In	Out	Out	
		East Tecolote (East Clairemont) LT	Southern Willow Scrub (SWS)	0.0170	In	Out	Out	
		East Tecolote Manholes 223 and 224 Emergency	Southern Willow Scrub (SWS)	0.0330	In	Out	Out	
		Park Mesa Way	Southern Willow Scrub (SWS)	0.1500	In	Out	Out	01/13/2000
		Tecolote (including Mt. Elbrus)	Southern Willow Scrub (SWS)	0.0200	In	In	Out	11/18/2002
		Tecolote (including Mt. Elbrus)	Southern Willow Scrub (SWS)	0.1100	In	In	Out	11/18/2002
		Tecolote 8 inch CI Sewer Main Replacement	Southern Willow Scrub (SWS)	0.0020	In	In	Out	
		Tecolote 8 inch CI Sewer Main Replacement	Southern Willow Scrub (SWS)	0.0030	In	In	Out	
		Tecolote Emergency Pipe Repair (Crossing)	Southern Willow Scrub (SWS)	0.0080	In	In	Out	
		Tecolote LT	Southern Willow Scrub (SWS)	0.0300	In	In	Out	
		Tecolote Mt. Ashmun Pipe Protection Erosion Contro	Southern Willow Scrub (SWS)	0.0010	In	In	Out	
		Tecolote Mt. Ashmun Pipe Protection Erosion Contro	Non-Vegetated Channel (NVC)	0.0010	In	In	Out	