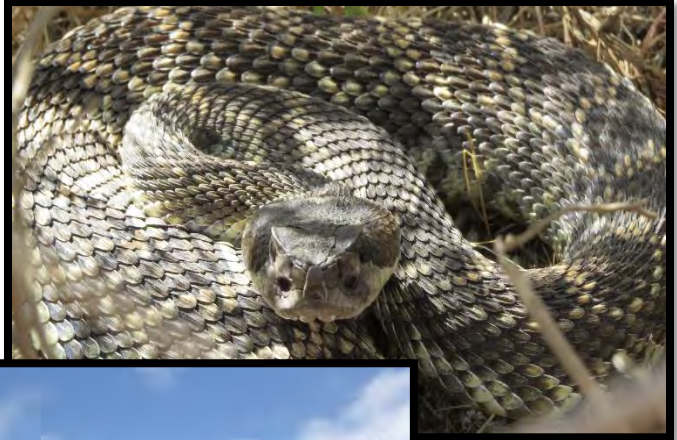


**Canyon Sewer Cleaning Program  
And  
Long Term Sewer Maintenance Program  
Progress Report**





*Cover - **Top Left:** Long Term Access: Alvarado Canyon, **Top Right:** Southern Pacific Rattlesnake, Rose canyon Mitigation Site, **Center:** New Bridge in East Tecolote Canyon,. **Bottom Left:** Willow Tree Saplings at Stadium Mitigation Site; **Bottom Right:** Blooming Lupine on upland buffer at Stadium Mitigation site*

## TABLE OF CONTENTS

<b>Long Term Access Projects</b> .....	2
<b>Construction and Emergency Projects</b> .....	6
<b>25 Month Revegetation and Restoration Projects</b> .....	7
<b>Mitigation Projects</b> .....	9
Canyon View Upland Restoration Mitigation Project .....	11
Central Tecolote Enhancement Mitigation Project.....	13
Rose Canyon Mitigation Project.....	15
San Clemente Canyon Mitigation Project.....	17
Rancho Mission Canyon Wetland Enhancement Project .....	19
Tecolote Canyon Mitigation Project .....	21
San Diego River Wetland Creation Project .....	23
Los Peñasquitos North Wetland Creation Project .....	25
Lake Murray Mitigation Project .....	27
El Rancho Peñasquitos Wetland Enhancement Project.....	29
Stadium Wetland Mitigation Project .....	33

## LIST OF FIGURES

Figure 1	Public Utilities Mitigation Sites Overview Map
Figure 2	Canyon View Upland Restoration Mitigation Project Vicinity Map
Figure 3	Central Tecolote Mitigation Vicinity Map
Figure 4	Rose Canyon Mitigation Site Vicinity Map
Figure 5	San Clemente Mitigation Project Vicinity Map
Figure 6	Rancho Mission Mitigation Vicinity Map
Figure 7	Tecolote Canyon Mitigation Vicinity Map
Figure 8	San Diego River Mitigation Project Vicinity Map
Figure 9	Los Peñasquitos North Wetland Mitigation Vicinity Map
Figure 10	Lake Murray Mitigation Project Vicinity Map
Figure 11	El Rancho Peñasquitos Mitigation Vicinity Map
Figure 12	Otay Mesa Upland Mitigation Bank Vicinity Map
Figure 13	Stadium Mitigation Site Vicinity Map

## ATTACHMENTS

Attachment A	25 Month Revegetation and Restoration Projects Status Table
Attachment B	Mitigation Summary Table
Attachment C	Mitigation Assignment Summary Table

## ACRONYMS AND ABBREVIATIONS

ACOE	United States Army Corps of Engineers
BMP	Best Management Practices
CDFW	California Department of Fish and Wildlife
CIP	Capital Improvement Project
DSD	Development Services Department
MEAP	Long Term Maintenance and Emergency Access Plan
MHPA	Multiple Habitat Planning Area
OSCAC	Open Space Canyons Advisory Committee
PEIR	Programmatic Environmental Impact Report
PEP	Plant establishment period
Program	Canyon Sewer Cleaning Program and the Long-term Canyon Sewer Maintenance Program
Public Utilities	City of San Diego Public Utilities Department
ROF	Redirection of Flow
SCR	Substantial Conformance Review
WWC	Wastewater Collection Division



## EXECUTIVE SUMMARY

In response to an Administrative Order from the U.S. Environmental Protection Agency, in an effort to reduce sewer spills and beach closures, and under the direction of Council Policies 400-13 and 400-14, the City of San Diego's Public Utilities Department (Public Utilities) has adopted the Canyon Sewer Cleaning Program and the Long-term Canyon Sewer Maintenance Program (Program) to access, clean, and repair miles of sewer infrastructure located in canyons and other environmentally sensitive areas.

A Programmatic Environmental Impact Report (PEIR) was prepared to study the Program and in July 2004 the City of San Diego approved Coastal Development Permit No. 13506 and Site Development Permit No. 13507 for the Program.

The objectives of the Program are:

- To complete the inspection and cleaning of City of San Diego sewer infrastructure located in canyons and other environmentally sensitive areas.
- To identify and implement efficient, effective, and environmentally sensitive means to accomplish the necessary canyon sewer cleaning activities.
- To provide for long-term maintenance of canyon sewer infrastructure, recognizing that availability of access to the infrastructure is essential for an effective long-term program, in accordance with Council Policy 400-13.
- To evaluate and pursue options to redirect sewage flows out of canyons and into street sewer lines or other accessible areas, where feasible and appropriate pursuant to Council Policy 400-14.

This annual report, as required by the site development permit condition 27, provides a Progress Report to the Open Space Canyons Advisory Committee (OSCAC) on the Program for the year from July 1, 2017 through June 30, 2018. This report provides the status of all Program activities within the reporting year, including habitat mitigation, long term access planning and implementation, construction and emergency projects, and 25 month revegetation and restoration projects.

## LONG TERM ACCESS PROJECTS

Long Term Sewer Access Projects provide access paths to sewer infrastructure for ongoing maintenance, inspections, and cleaning. One of the first steps in determining whether an access path is needed is to prepare a redirection of flow (ROF) study. A ROF study evaluates the economic feasibility of removing all or part of the sewer from an environmentally sensitive area or canyon versus providing access to the sewer if it remains in place.

When redirection of flow is found to be infeasible from all or portions of environmentally sensitive areas/canyons, Public Utilities staff develop a Long-Term Maintenance and Emergency Access Plan (MEAP) in accordance with Policy 400-13. Public Utilities staff prepares and submits a Substantial Conformance Review (SCR) packages to the Development Services Department (DSD) for a determination whether the proposed mitigation, restoration, and access planning for individual canyon areas or project is in conformance with the PEIR and Program master permits. Project specific design plans are then prepared as necessary to provide specific direction on access improvements and construction that include additional information necessary to obtain regulatory agency permits. Separate permits or clearances are obtained from the regulatory agencies prior to implementation of long term access projects.

The following canyons are in various stages of long term access planning and implementation:

- **32<sup>nd</sup> Street/Huckleberry** – Public Utilities Wastewater Collection (WWC) Division constructed the new access paths in February 2017. The project is currently in the post construction 25-month maintenance & monitoring period.

**Alvarado Phase I** – Phase I was fully implemented by City crews in July 2018. Phase I included the creation of a 10-foot-wide sewer access path to accommodate



the required cleaning equipment, as well as improvement of one pipe culvert crossing. The improved culvert crossing not only provides for a safer more stable

access path for City crews, but also improves the water flow in the canyon. Phase I expands access to 30 % of the manholes for cleaning and inspections.

- **Alvarado Phase II** - Phase II will include additional stream crossing improvements that will expand and improve access to 100% of the canyon manholes. Design for Phase II is complete, and once Public Utilities receives the final biological report, resource agency permits will be submitted. Public Utilities anticipates implementation of Phase II to occur September 2019 or 2020.
- **East Tecolote Phase I** - Phase I was under construction in July 2018 and was fully implemented by City crews by September 2018. Phase I included the addition of a bridge that can accommodate the necessary sewer cleaning equipment. The bridge reduced wetland impacts to the streambed by eliminating the need for an Arizona type crossing. This phase has expanded access to 75% of the canyon manholes for cleaning and inspections.



- **East Tecolote Phase II** – Phase II will include additional stream crossing improvements that will expand and improve access to 100% of the canyon manholes. Design will be finalized in 2019, and resource agency permitting will follow. Public Utilities anticipates implementation of Phase II to occur September 2020.
- **Norfolk Canyon** – Public Utilities completed a technical memorandum that included recommendations for long-term access improvements. The memorandum identified the need for the upsizing of one pipe culvert as well as three streambed crossing improvements. Public Utilities plans to move forward with obtaining engineered plans, along with the required environmental reports, and Resource Agency permits.

- **Home Avenue Trunk Sewer** – Construction was completed by WWC in fall 2017. The project is currently in the post construction 25-month maintenance & monitoring period.
- **South Chollas** –The post construction 25-month maintenance & monitoring period has been completed. Public Utilities will continue maintenance of the path as-needed for cleaning and inspection purposes.



*South Chollas –Improved Access Path to Manhole 449*

- **North, Central, and Southern Tecolote Canyon** – Access crossing improvements are included with the Tecolote Canyon Trunk Sewer Replacement Capital Improvement Project (CIP) project. The CIP project is currently in the design and permitting stage. Currently the project is scheduled to start construction December 2019.
- **Mt. Elbrus** – The new access path was completed by WWC in January 2017. The project is currently in the post construction 25-month maintenance & monitoring period.
- **Interstate (I)-15 & Balboa** – City crews began implementation of this access project in September 2018. Public Utilities anticipates completion by February 2019. The project includes the creation of an 8-foot-wide sewer access path and one turnaround area. Prior to construction PUD conducted an environmental assessment, and went through Substantial Conformance Review, from Development Services, and received a Section 1602 Lake and Stream Alteration Agreement from CDFW
- **Interstate (I)-15 & Adams** – This project is the planning stage, and will include expanding portions of the existing 8-foot-wide access path to 10 feet wide path to accommodate the required cleaning equipment (flusher), and will include stream



crossing improvements. Public Utilities anticipates construction of this project to commence in September 2020.

- **San Clemente Canyon** - This project is in planning stage, and will include improvements to the existing access path, and establishment of new access. Public Utilities anticipates construction of this project to commence September 2020.

## MAINTENANCE, MONITORING, AND MAPPING

Wastewater Collection Division staff coordinated closely with Environmental Staff (Environmental Section) in ensuring daily activities were in compliance with the Program's master permit, agency permits, and environmental regulations.

Environmental training is provided to all Public Utilities staff working in canyons/environmentally sensitive areas. Crews are directed to contact staff in the Environmental Section for guidance and support for work that may impact sensitive resources.

The Environmental Section reviews daily field work reports, facilitates monthly meetings to discuss and review all work in canyons, obtains permits, and provides daily support to field crews. Work conducted in canyons/environmentally sensitive areas is monitored by the Environmental Section. Bird nesting surveys, vegetation and sensitive species mapping, jurisdictional delineations and other biological surveys are completed by the Environmental Section for daily WWC operation and maintenance of sewer lines in canyons.

Public Utilities has increased its efforts to inventory and map existing access to sewers in canyons. This inventory provides information on existing access conditions, identifies access needs and areas of concern), and facilitates ongoing maintenance. To date, 173 miles of pedestrian and vehicular paths have been mapped with the GPS data for 137 canyon areas. Vehicle access path data is available on Atlas.



Access Path Inventory Map for Alvarado

## CONSTRUCTION AND EMERGENCY PROJECTS

Below is a list of sewer emergency projects and/or pipeline/manhole repair projects that occurred in canyons or environmentally sensitive areas since July of 2017:

### Emergency Projects

- 55<sup>th</sup> Street Emergency Sewer Point Repair
- Bancroft Sewer Realignment Emergency
- Gesner Canyon Emergency Sewer Repair (Point Repair)
- Rose Canyon Emergency Sewer Repair (Point Repair)
- South Chocolate (Juniper) Canyon Emergency Sewer Point Repair
- Stevenson Canyon Emergency Sewer Pipe Protection Emergency



*Rose Canyon Emergency Sewer Repair*

### Other Construction/Maintenance Projects

- PS 77 Sub Aqueous Condition and Line Stop Manhole Access (Pipe Repair)
- Bounty and Waring (Navajo Canyon) Pipe Repair (Pipe Repair)
- Peñasquitos TS Condition Assessment
- CCTV Sewer Main and Manhole Inspections 2017/2018 (Condition Assessment)
- West San Diego River Vault Repair
- Upas Street Spot Repair
- Overlake Ave Access Path Gate Installation
- Otay River Sewer Overflow Structure Access Project
- Mission Valley Path Maintenance

Public Utilities crews completed access path maintenance in multiple canyon areas to facilitate access for cleaning, inspections and maintenance. Path maintenance is usually limited to trimming or mowing vegetation that has grown on the pathways. Maintenance on the access path precedes manhole cleaning and maintenance.

Public Utilities staff manages emergency and non-CIP construction projects. Environmental review, monitoring, and reporting are done in adherence with the Program. Biological assessments have been prepared and permits have been obtained as necessary for these emergency and construction projects. Following construction, revegetation and/or restoration has been implemented in accordance with the Program.

## 25 MONTH REVEGETATION AND RESTORATION PROJECTS

Conditions of the Master Site Development Permit require effective erosion control on access paths and restoration of temporarily impacted areas outside of permanent access paths following construction. Each impact area is monitored and maintained for a period of no less than 25 months.

Revegetation sites include all areas required for permanent access to utilities including the access paths, turn-arounds, and work areas around manholes. When new access paths and permanent access areas are created, revegetation is required. The goal of revegetation is successful erosion control. Maintenance and monitoring of revegetation areas may include hydroseeding or hand-seeding, weeding, mulching or installing wood chips on the path, installation of temporary Best Management Practices (BMPs), site monitoring or a combination of the above treatments.

Restoration sites are areas impacted outside of permanent access areas. Restoration areas are typically staging areas, emergency access or work areas, pipeline repair areas, unauthorized impact areas, or areas disturbed as a result of temporary widening of pathways. The goal of habitat restoration is re-establishment of native habitat. Restoration areas shall obtain native plant coverage equal to the native species present in the adjacent area or 30% coverage, whichever is greater. Restoration areas shall support no more than 1% perennial weeds and no more than 10% annual weeds during the 25-month maintenance period. Maintenance and monitoring of restoration areas may include hydroseeding or hand-seeding, installation of container plants, weeding, and installation of temporary BMPs, temporary irrigation, site monitoring or a combination of the above treatments.

Seed and plant material for revegetation and restoration efforts are typically from locations within 25 miles of the coastline in San Diego County. Maintenance and monitoring of all sites continues for 25 months or until successful erosion control is achieved on the paths and/or restoration goals are met outside of the paths.

During this reporting year, eight (8) sewer revegetation projects were completed. In addition to eighteen (18) ongoing projects, and six (6) additional sites were installed and maintenance and monitoring of these sites was initiated.

Updates on the status of the revegetation and restoration projects are a regular agenda item at OSCAC's meetings. See *Attachment A* for the June 2018 Revegetation and Restoration Projects Status update table.





*South Chocolate (Juniper) Canyon Emergency Sewer Point Repair Revegetation*



*Stevenson Canyon Emergency Pipe Protection Restoration (Hydroseeding)*



## MITIGATION PROJECTS

In accordance with applicable local, state, and federal regulations, restoration, revegetation, or mitigation is required for significant biological impacts resulting from the Program, such as the creation of access paths through environmentally sensitive areas, emergency repairs, and pipeline repair projects. In order to mitigate these impacts, Public Utilities staff has identified and implemented a number of habitat mitigation projects located within various watersheds where past, current, or future impacts have or may occur. These mitigation sites are designed and built to accommodate numerous Public Utilities projects. Allocation of mitigation is completed as each project is planned, permitted and constructed. Post construction adjustments are made to mitigation assignments based on actual project impacts. Project impacts and mitigation assignments are tracked internally within the Canyon Database. A summary of acreages available, acreages assigned, and the balance is included as Attachment B. A more detailed summary of assignments is included as Attachment C.

The location of these projects is shown in Figure 1. The status of each habitat mitigation project is summarized below.



*Los Peñasquitos North Mitigation Site*





**Figure 1**  
Mitigation Sites  
Overview Map



## Canyon View Upland Restoration Mitigation Project

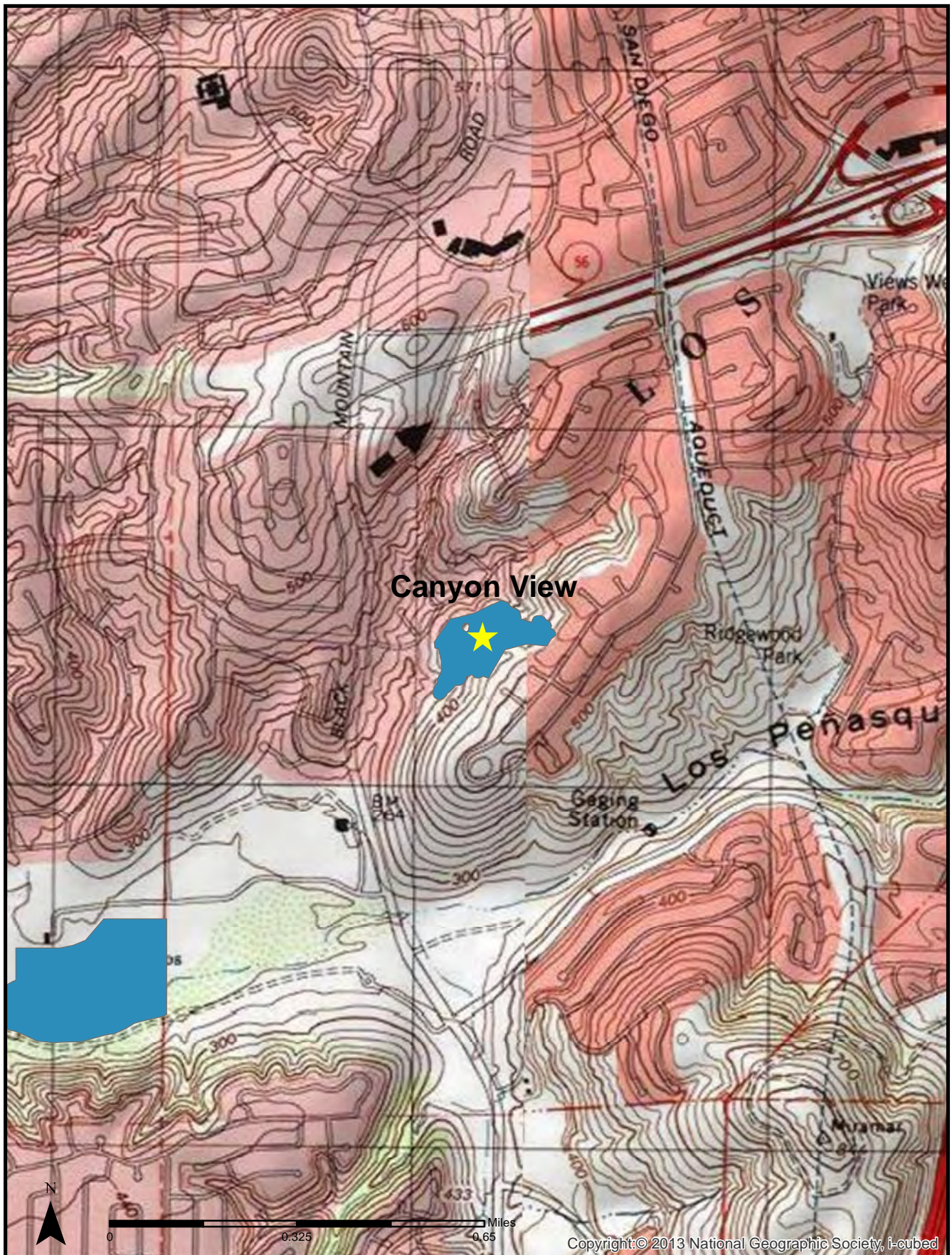


**Canyon View Upland Restoration: Native Grassland**

This project is located east of Black Mountain Road and south of Adolphia Street in Los Peñasquitos Canyon (Figure 2). Construction began in September 2011. The project included the restoration of approximately 0.9 acres of native grassland and 6.49 acres of Diegan coastal sage scrub habitat, within Los Peñasquitos Canyon Preserve. The project serves to mitigate impacts associated with Public Utilities projects located in the preserve. Bobcat (*Lynx rufus*) and coastal California gnatcatchers (*Polioptila californica californica*) have been observed foraging onsite within the native grassland and Diegan coastal sage scrub habitat. This site has successfully achieved the goal of restoring low quality non-native uplands into high quality native habitats. This project completed the 5-year maintenance and monitoring period in 2017 and received sign-off in spring of 2018.

Mitigation Credits			
Habitat Type	Acres	Assigned	Balance
Diegan Coastal Sage Scrub (Tier II)	6.49	1.61	4.88
Native Grassland (Tier I)	0.89	0.02	0.87







## Central Tecolote Enhancement Mitigation Project

This project is located south of Balboa Avenue and north of Mt. Acadia Boulevard in Tecolote Canyon (Figure 3). The project consists of riparian enhancement and native grassland/coastal sage scrub restoration in addition to a weed management area that encompasses all of Tecolote Creek from Balboa Ave. to Mt. Acadia Dr. Public Utilities staff conducted a site sign off visit in April, 2018 with USACE, and in



*Central Tecolote Enhancement: Oak Riparian Forest*

May, 2018 with CDFW, RWQCB, and City Development Services Dept. (DSD). At the end of Year 5 vegetation communities had met or exceeded the success criteria milestones, successfully completing the 5-year maintenance and monitoring period and received regulatory agency sign-off in June 2018.

Exotic species removed from the site include: Brazilian pepper tree, pampas grass, Mexican fan palm, Canary Island date palm, eucalyptus, fennel (*Foeniculum vulgare*), mustard, and yellow sweet clover (*Melilotus indicus*). Maintenance activities completed this year include weed and trash removal, cutting installation, additional seeding, and site protection repair.

The City Public Works Department's is currently proposing a Tecolote Canyon Trunk Sewer Improvement Project; this project is currently being designed. A portion of the CIP project has the potential to overlap with the mitigation project area. At the end of Year 5 a final vegetation mapping and jurisdictional delineation was performed in order to rectify any changes to the final mitigation areas.

Mitigation Credits			
Habitat Type	Acres	Assigned	Balance
Oak Riparian Forest (Enhancement)	8.06	2.08	5.98
Diegan Coastal Sage Scrub (Tier II)	2.08	0.62	1.46
Native Grassland (Tier I)	1.64	0.10	1.54





**Figure 3**  
**Central Tecolote Mitigation Site**  
**Vicinity Map**



## Rose Canyon Mitigation Project

The Rose Canyon Mitigation Project is located in the Rose Canyon Open Space Park, starting approximately 0.5 mile west of Genesee Avenue and continuing another 0.5 mile further west into the park (Figure 4). Approximately 5 acres of oak riparian forest, southern cottonwood-willow riparian forest, and mule fat scrub were created adjacent to Rose Creek with 0.61 acre of riparian enhancement. Approximately 4.75 acres of Diegan coastal sage scrub habitat was restored on the upland areas.

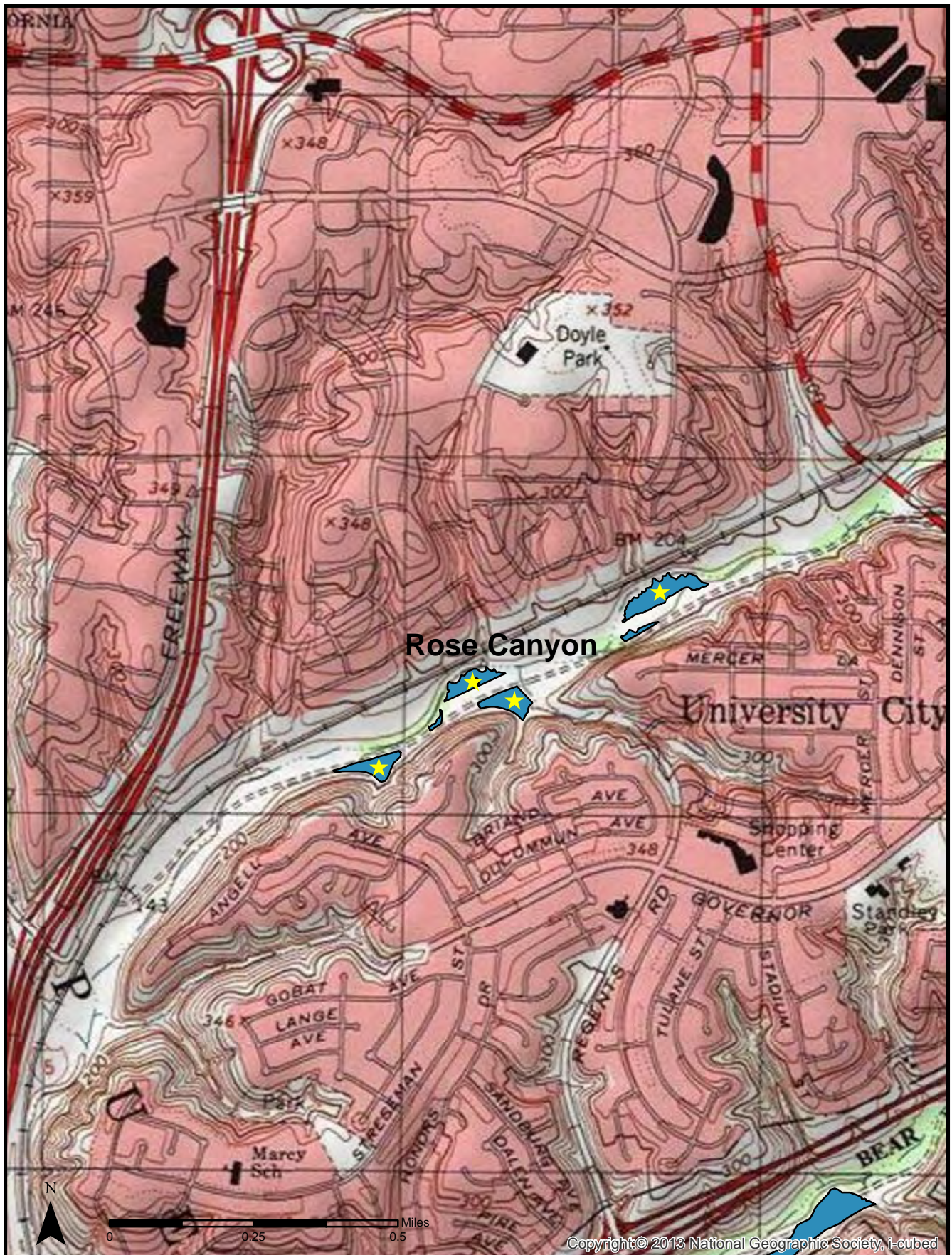


*Rose Canyon Mitigation: Mulefat Scrub*

The project has completed 10 years of maintenance and received regulatory sign-off in July 2016. Vegetative cover at the site is very high, uplands habitat exceeds 90% cover and has a high diversity of species that includes California sagebrush (*Artimisia californica*), white sage (*Salvia apiana*), coyote bush (*Baccharis pilularis*), and San Diego goldenbush (*Isocoma menziessii*). The wetland creation habitat exceeds 100% cover in some sections of the project area with canopy height reaching 20 to 25 feet; many cottonwood (*Populus* spp.) and willow (*Salix* spp.) saplings were observed on the site. Drift deposits and the development of sand bars were observed throughout the wetland enhancement areas indicating wetland hydrology was present. The native grassland habitat continues to do well, with increased coverage of purple needlegrass and (*Stipa pulchra*) and beardless wild rye (*Elymus triticoides*). The site will continue to receive maintenance on a semi-annual to quarterly basis to help ensure native habitat continues to increase in maturity and spatial coverage. This year maintenance crews focused on control and removal of non-native annuals such as mustard, Mexican fan palm and sweet clover .

Mitigation Credit Status			
Habitat Type	Acres	Assigned	Balance
Riparian Forest (Creation)	5.05	3.19	1.86
Riparian Forest (Enhancement)	0.61	0.55	0.06
Diegan Coastal Sage Scrub (Tier II)	4.75	2.48	2.27
Native Grassland (Tier I)	0.28	0.09	0.19







## San Clemente Canyon Mitigation Project

The San Clemente Canyon Mitigation Project provides mitigation for impacts associated with Public Utilities projects within San Clemente Canyon / Marian Bear Memorial Park and surrounding watershed. The project is located at two sites within the park, one just east of the Regents East parking area and the other approximately three-fourths of a mile east of the Genesee parking area (Figure 5).



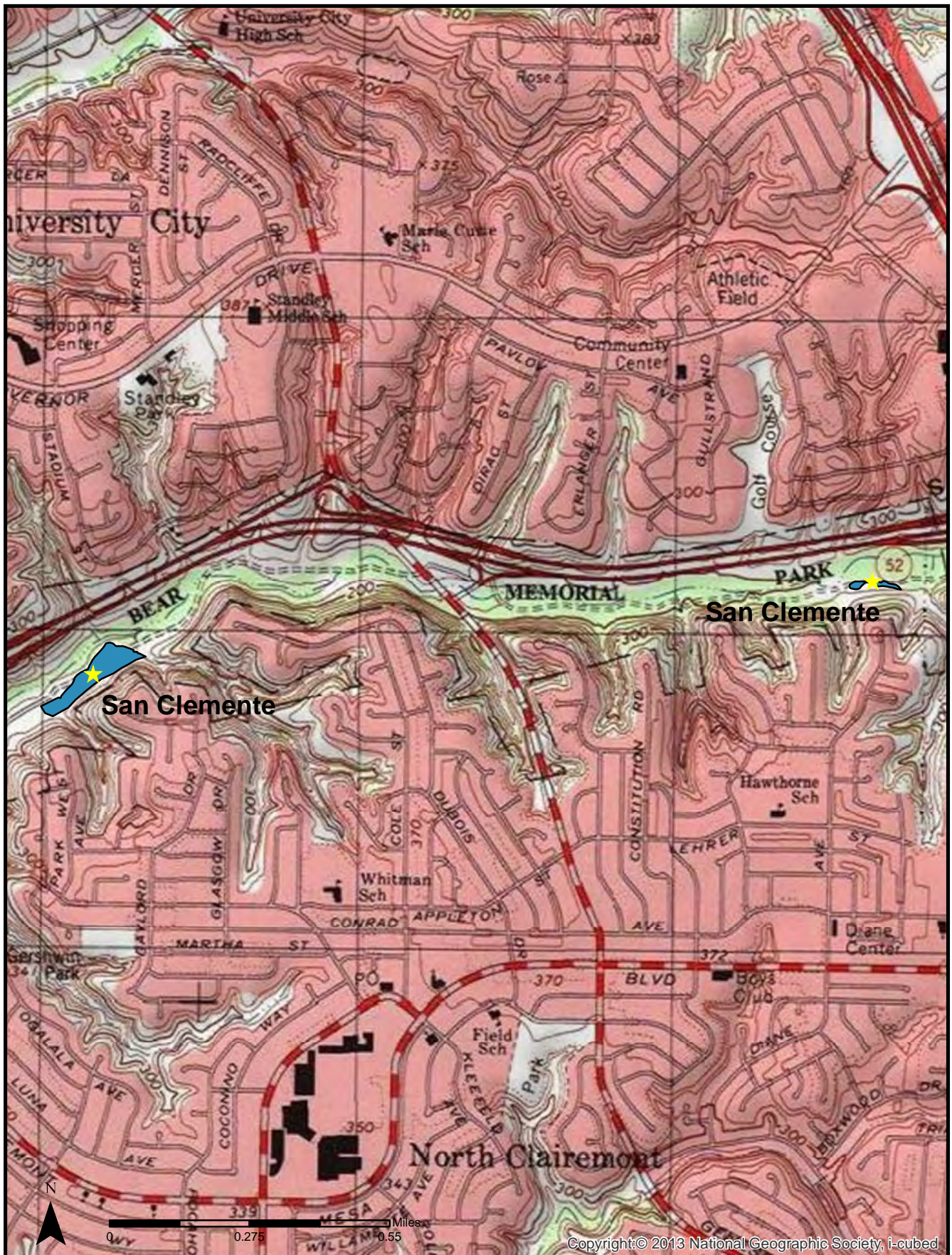
*San Clemente Canyon: Diegan Coastal Sage Scrub with  
Helmeted Guinea fowl*

The project includes the creation of 2.86 acres of wetland habitat (southern willow riparian forest, streambed and emergent wetland) and 2.81 acres upland habitat (Diegan coastal sage scrub and oak woodland).

Construction was initiated in October 2007 and received regulatory sign-off from the ACOE in January 2015. The upland and wetland planting areas for the project have shown steady establishment of target species with vegetative cover in portions of the wetland habitat over 100% cover. The wetlands support a willow over story and a well-developed understory including species such as California rose (*Rosa californica*) and San Diego marsh elder (*Iva hayesiana*). The site will continue to receive maintenance on a semi-annual to quarterly basis to help ensure native habitat continues to increase in maturity and spatial coverage. This year maintenance crews focused on control and removal of non-native annuals such as black mustard and sweet clover. Available mitigation acreage below reflects actual acreage of habitats restored at the end of the year 5 maintenance period and rounded totals of assignments to date.

Mitigation Credit Status			
Habitat Type	Acres	Assigned	Balance
Streambed (Creation)	0.02	0.01	0.01
Emergent Wetland (Creation)	0.20	0	0.20
Riparian Forest (Creation)	2.64	1.99	0.65
Diegan Coastal Sage Scrub (Tier II)	2.42	1.56	0.86
Oak Woodland (Tier I)	0.39	0.19	0.20





**Figure 5**  
 San Clemente Mitigation Site  
 Vicinity Map



## Rancho Mission Canyon Wetland Enhancement Project

The Rancho Mission Canyon Wetland Enhancement Project is located in the City's Rancho Mission Canyon Open Space Park, south of Mission Gorge Road, north of Navajo Road, and on either side of Margerum Way in the Community of Allied Gardens (Figure 6).



*Rancho Mission Wetland Enhancement: Southern Willow Scrub*

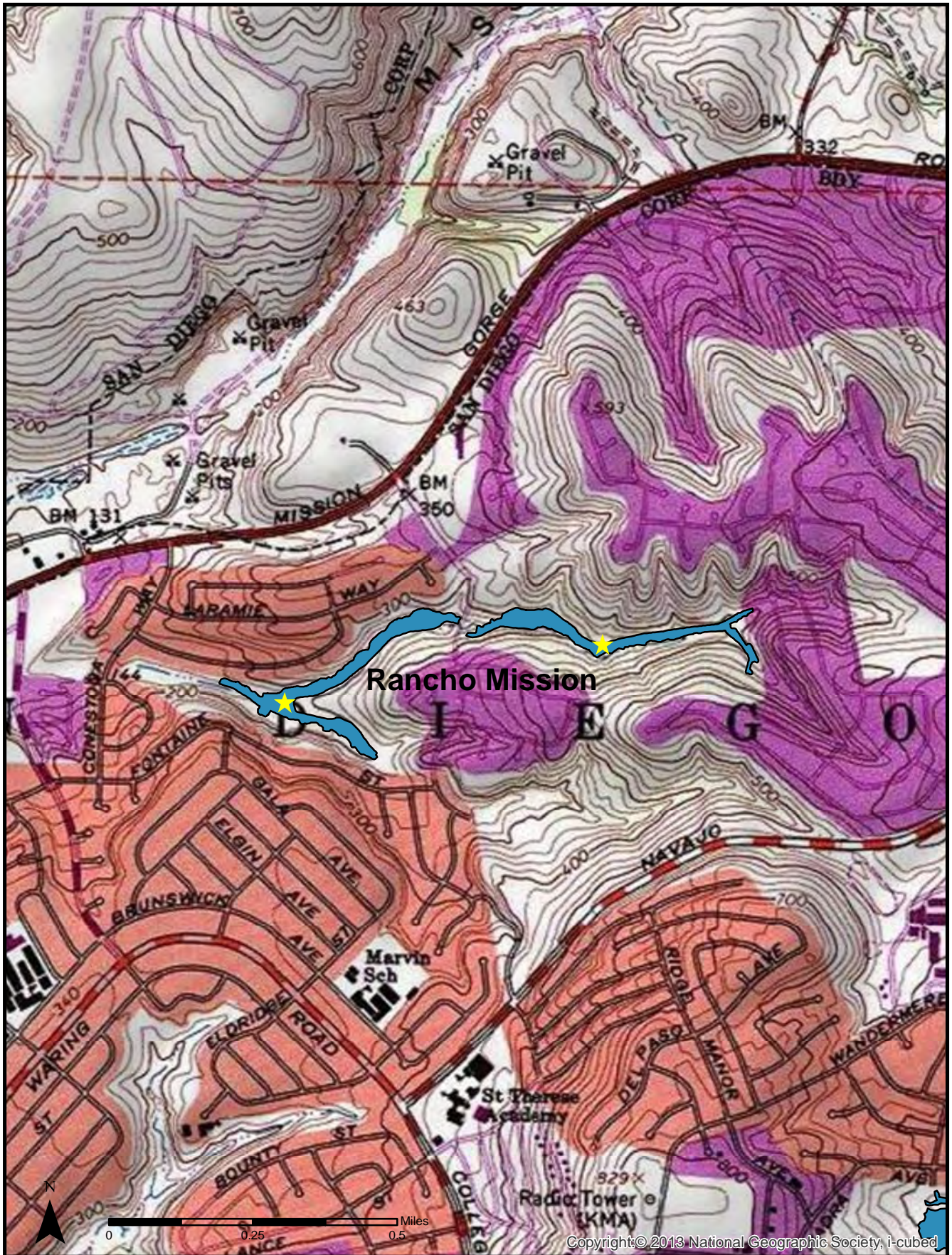
The Rancho Mission Canyon Project includes the enhancement of 7.59

acres of wetlands and restoration of 1.53 acres (75% mitigation credit) of wetland transitional habitats. Non-native vegetation was removed from the canyon, followed by revegetation with native southern willow scrub and wetland transitional species. The total area of habitat enhancement runs the entire canyon bottom and encompasses more than 13.5 acres.

The site completed the 5-year long-term maintenance and monitoring period in March 2013. Regulatory sign-off and approval for the project was received in the summer of 2013. The site currently supports target native cover of approximately 100%, exceeding the Year 5 goal of 90%. The site is continuing to mature with dense thickets of vegetation found throughout the riparian corridor. Trees within the site continue to mature with some individuals exceeding 30 feet in height, and the understory is well developed with a diverse variety of herbs and shrubs. During the mitigation assessment in spring 2018 a few isolated non-native species were observed throughout the site including; Mexican fan palm, Canary Island date palm, and pampas grass, these plants were removed and treated during annual maintenance this year.

Mitigation Credit Status			
Habitat Type	Acres	Assigned	Balance
Southern Willow Scrub (Enhancement)	8.74	2.13	6.61







## Tecolote Canyon Mitigation Project

The Tecolote Canyon Mitigation Project provides mitigation for impacts associated with projects within Tecolote, Mt. Elbrus, East Clairemont, and Manning Canyons. The Balboa site is located south of Balboa Avenue, and the Grove site is located south of the Tecolote Golf Course and north of the University of San Diego (Figure 7).

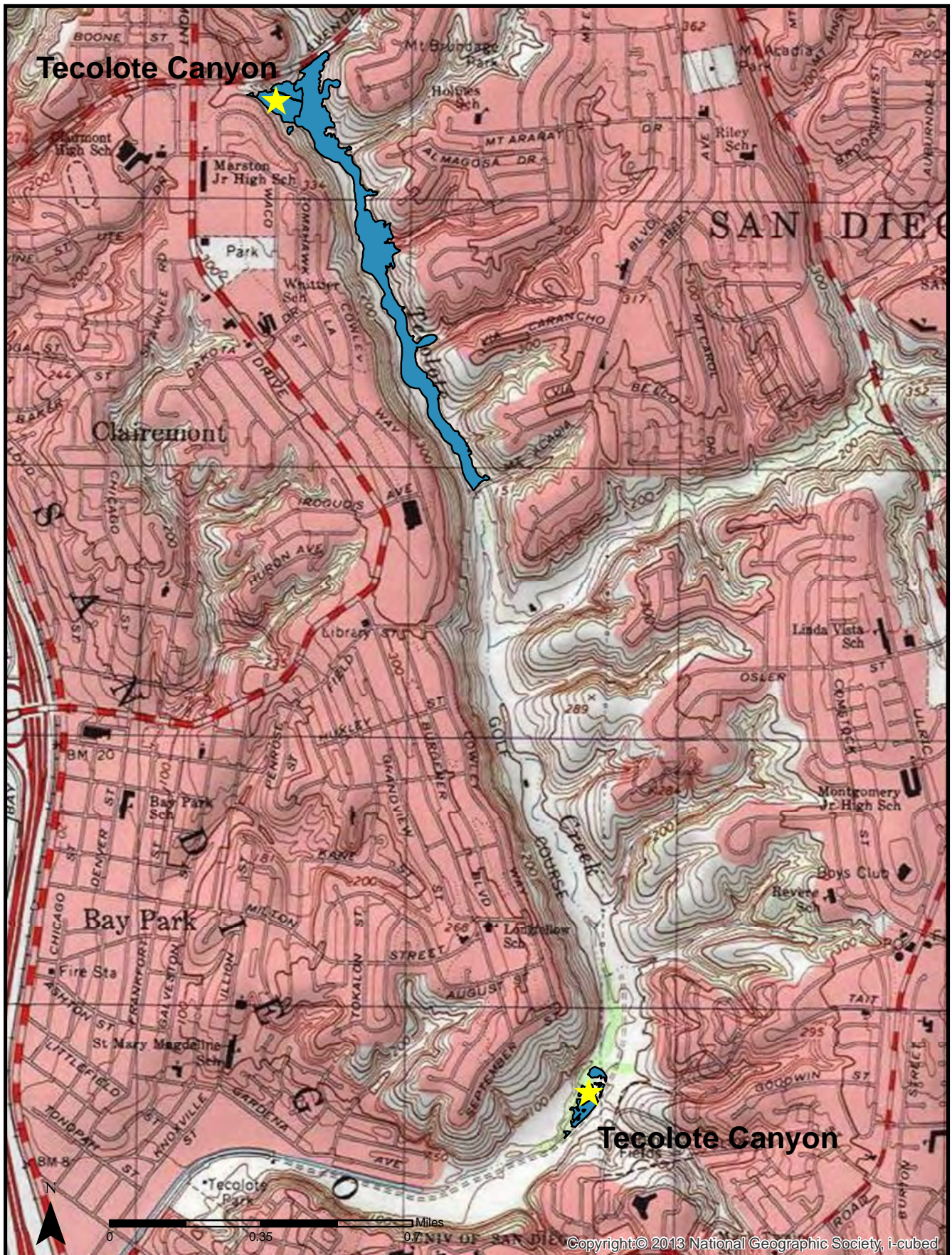


*Tecolote Canyon Mitigation: Southern Willow Scrub with native dodder (Cuscuta sp.)*

The project includes the creation of 1.61 acres of wetland habitat (southern willow scrub, southern cottonwood willow riparian forest, and oak riparian forest) and restoration of 3.37 acres upland habitat (Diegan coastal sage scrub & native grassland). Construction was initiated in February 2007 and the site met its 5-year maintenance goals and received regulatory sign-off in 2013. A qualitative review of the site in spring of 2018 estimated vegetative cover to be approximately 90-100% in the Diegan coastal sage scrub habitats, and 75-100% in the riparian areas. Numerous bird species were observed within the site during the annual assessment including a barn owl (*Tyto alba*) and pair of coastal California gnatcatchers.

Mitigation Credit Status			
Habitat Type	Acres	Assigned	Balance
Riparian Forest (Creation)	1.19	0.80	0.39
Southern Willow Scrub (Creation)	0.42	0.41	0.01
Diegan Coastal Sage Scrub (Tier II)	3.30	3.29	0.01
Native Grassland (Tier I)	0.07	0.06	0.01







## San Diego River Wetland Creation Project

The San Diego River Wetland Creation Project is located on a Public Utilities owned parcel located immediately adjacent to the San Diego River, north of Camino Del Rio North, west of I-15, and east of Mission Center Parkway in the Mission Valley Community of the City of San Diego (Figure 8).

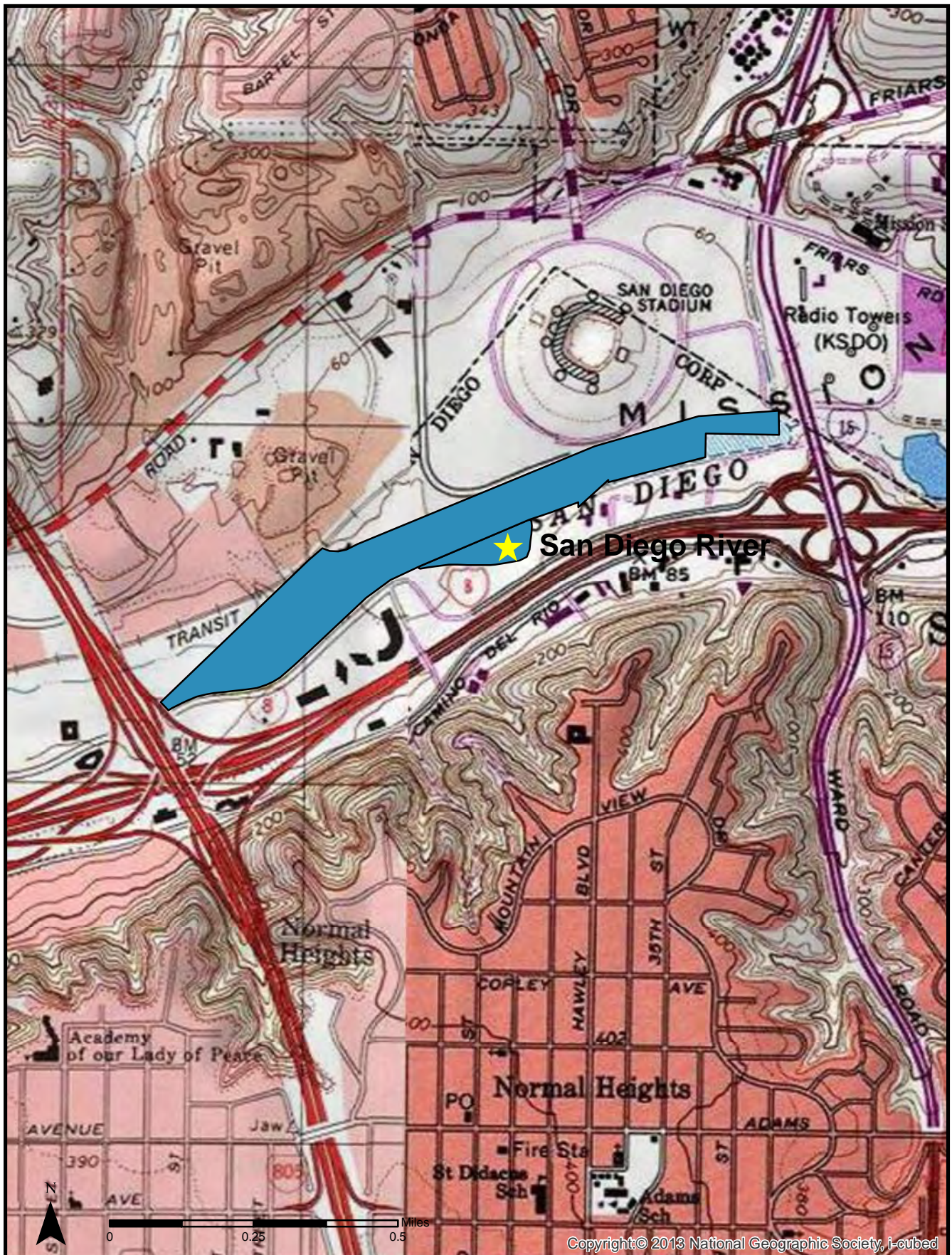


*San Diego River Wetland Creation: Native Riparian Forest*

The site includes the creation of 3.43 acres of native riparian habitat and approximately 2 acres of Diegan coastal sage scrub habitat. The project site was graded in the fall of 2005 to create a basin along the southern bank of the San Diego River. The long-term maintenance, monitoring, and reporting program started June 14, 2006 and the site successfully completed 5-years of maintenance and monitoring in June of 2011. Native vegetation at the site continues to mature with trees reaching heights of 25-30 feet, and total vegetative cover approaching 100%. The site supports a well-developed understory of spiny rush (*Juncus* spp.), rose, and mulefat (*Baccharis salicifolia*). Non-native annuals, primarily sweet clover and mustard were observed sporadically throughout the site, with the highest concentrations occurring on the north and western end. As part of long term management of the site, these areas were treated and supplemental native seed installed. The site will continue to receive semi-annual to quarterly maintenance to help ensure native habitat continues to mature and increase in spatial coverage. Trash from nearby illegal encampments continues to be removed from the site and adjacent areas, the City continues to remove encampments from the area as they are identified. During the 2018 site assessment several songbirds and animal tracks were observed within the site. The most notable observation was the identification a Least Bell's vireo (*Vireo bellii pusillus*) nest within the site, which successfully produced three fledglings. This is the second year in a row a vireo nest has been observed within the site.

Mitigation Credit Status			
Habitat Type	Acres	Assigned	Balance
Riparian Forest (Creation)	3.43	2.19	1.24



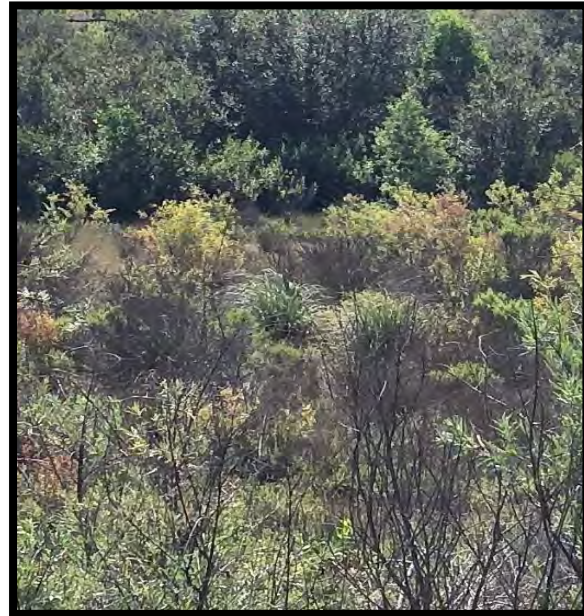




## Los Peñasquitos North Wetland Creation Project

Los Peñasquitos North Wetland Creation Project is located in the City of San Diego's Los Peñasquitos Canyon Preserve in the community of Peñasquitos, just north of the Los Peñasquitos Creek (Figure 9).

The project includes the creation of 3.8 acres of wetland habitat, including 3.15 acres of southern willow scrub, 0.43 acres of cottonwood/sycamore woodland, and 0.22 acres of freshwater marsh. The site also includes one acre of Diegan coastal sage scrub habitat to serve as a buffer on the north edge of the site. Regulatory sign-off and approval for the project was received in the spring of 2012.

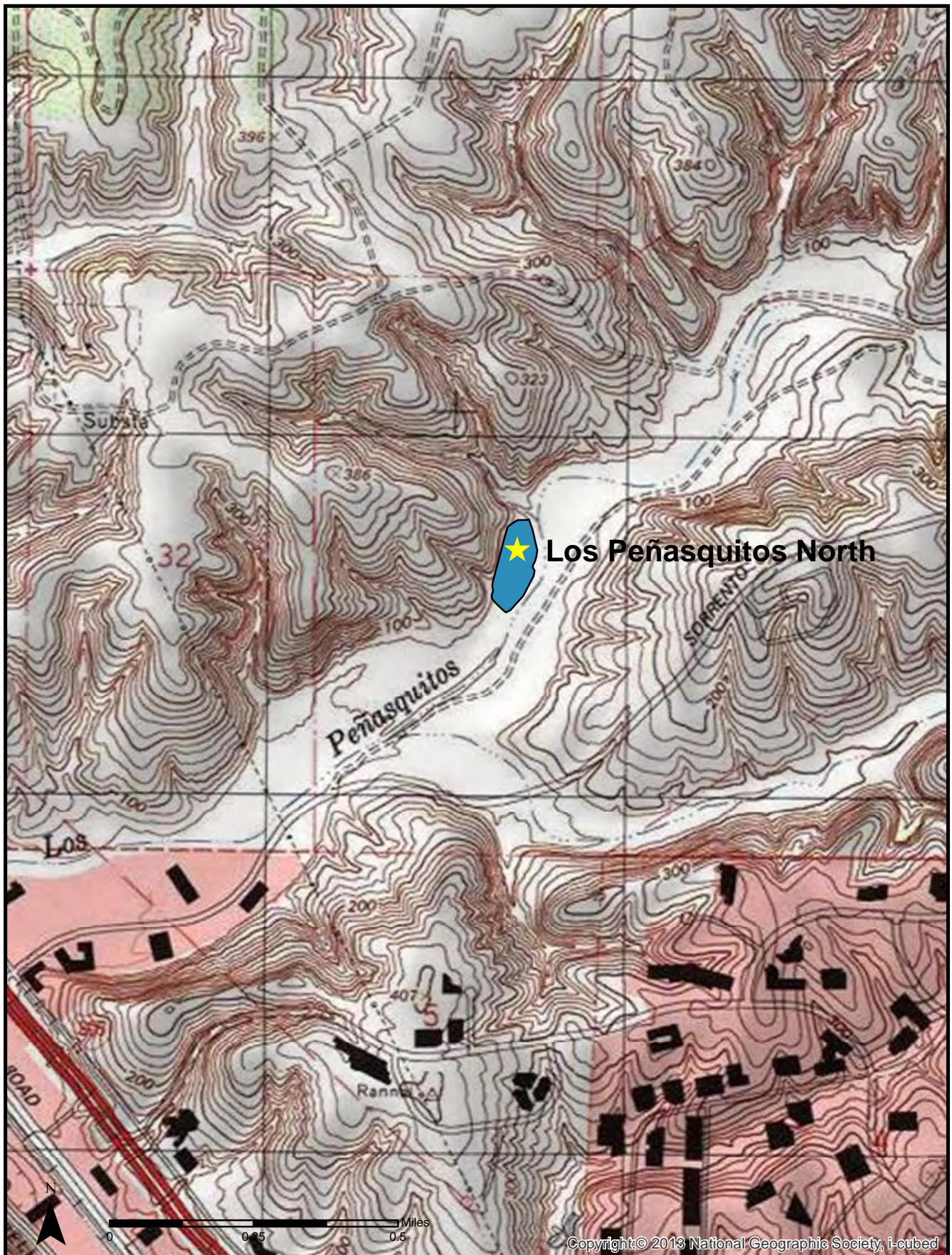


*Los Peñasquitos North Mitigation Site: Southern willow scrub*

The site was assessed in April 2018 and June 2018 and appeared in good condition. Evidence of high water flows through the site were observed with the presence of debris and a well-defined rack line. This year several willow and cottonwood saplings were observed throughout the site. The site continues to mature with vegetative cover approaching 95% and willows reaching heights of 25 to 35 feet. No trash or debris or unauthorized trails were observed onsite. The site meets the 5<sup>th</sup> year success standard with over 90% target vegetative cover. Vegetation within the wetland habitat is predominately spiny rush, deer grass (*Muhlenbergia rigens*) and various species of willows. Invasive species, including Mexican fan palm, and pampas grass have begun to establish within the wetland. This Non-native vegetation will be treated and removed from the site throughout the year as part of continued long-term monitoring and maintenance. Several species of mammals were observed at this site during the April assessment including; mule deer (*Odocoileus hemionus*), raccoon (*Procyon lotor*) and coyote (*Canis latrans*).

Mitigation Credit Status			
Habitat Type	Acres	Assigned	Balance
Freshwater Marsh (Creation)	0.22	0.22	0
Riparian Woodland (Creation)	0.43	0.43	0
Southern Willow Scrub (Creation)	3.15	2.95	0.2
Diegan Coastal Sage Scrub (Tier II)	1.03	1.03	0







## Lake Murray Mitigation Project

The Lake Murray Mitigation Project is in the City of San Diego's Mission Trails Regional Park. It is located in the area just west of Lake Murray in the Del Cerro neighborhood of the Navajo Community (Figure 10). The mitigation site includes 2.5 acres of wetland enhancement (southern willow scrub habitat) and just over 5.2 acres of upland restoration area (Diegan coastal sage scrub). Official sign-off was received from all of the regulatory agencies by December 2011.

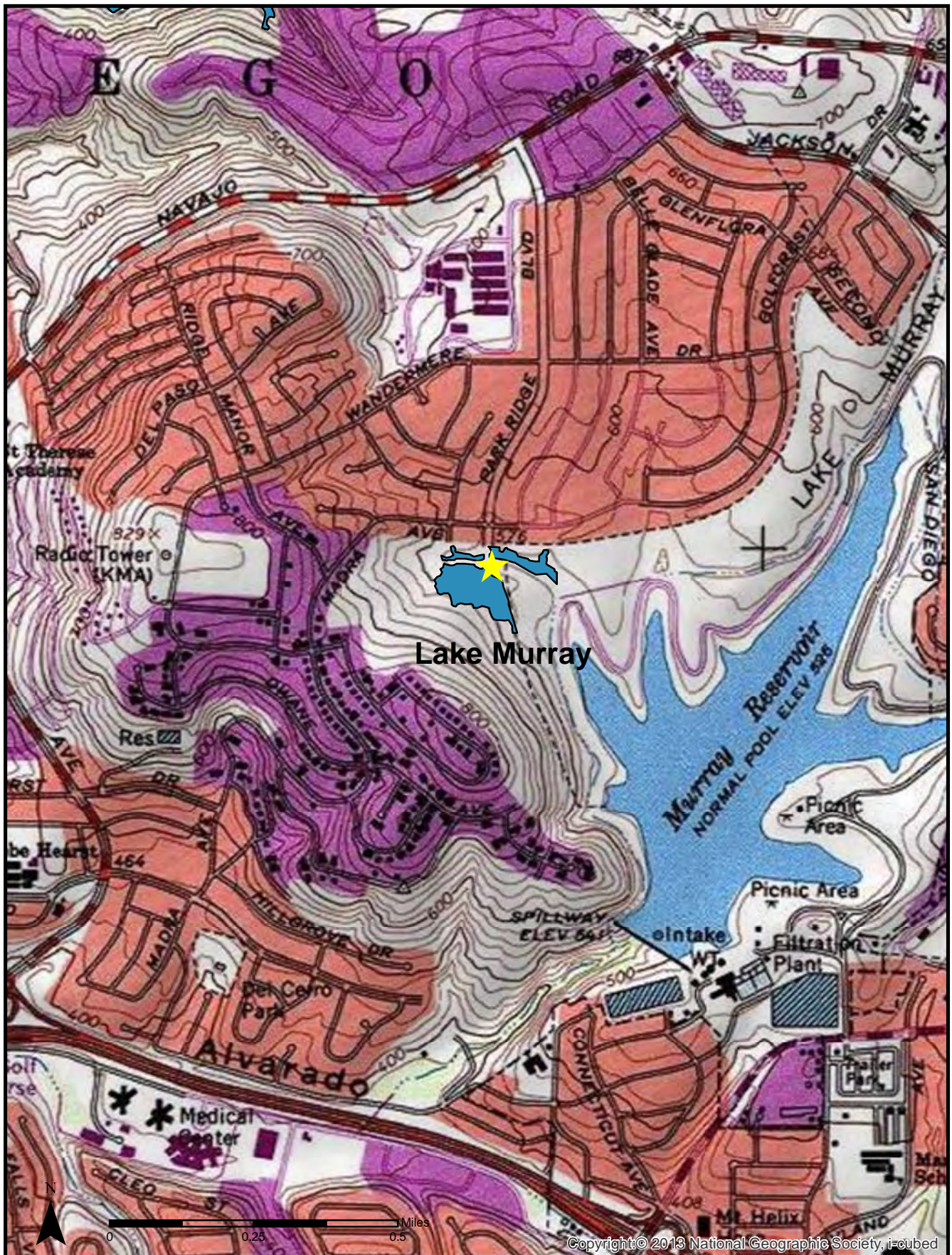


Lake Murray Mitigation: Southern Willow Scrub

The annual assessment survey was conducted May, 2018 to assess the current condition of the mitigation site. Fifth year success criteria required an average combined cover of 90% for the upland restoration and wetland enhancement areas. The wetland enhancement area exceeds 100% native cover throughout most of the defined enhancement site. The wetland over story continues to mature, increasing in density and height with species such as Fremont cottonwood (*Populus fremontii*), Western sycamore (*Platanus racemosa*), and various types of willows reaching heights of 40 feet or more. The understory is diverse with species such as spiny rush, spike sedge (*Carex nardina*) evening primrose (*Oenothera elata*), San Diego marsh elder, and broad-leaved cattail (*Typha latifolia*). Species found within the Diegan coastal sage scrub include California sagebrush, lemonade berry (*Rhus integrifolia*), flattop buckwheat (*Erigonium fasciculatum*), laurel sumac (*Malosoma laurina*), and black sage (*Salvia mellifera*). As part of the annual maintenance effort this year, non-native vegetation was treated and removed from the site. Maintenance was primarily focused in the edges of the upland areas where crews removed black mustard and milk thistles (*Sonchus spp.*) from the edges of the project site. Numerous bird species were observed throughout the site including coastal California gnatcatchers, California thrashers (*Toxostoma redivivum*) and multiple coveys of California quail (*Callipepla californica*).

Mitigation Credit Status			
Habitat Type	Acres	Assigned	Balance
Southern Willow Scrub (Enhancement)	2.5	1.53	0.97
Diegan Coastal Sage Scrub (Tier II)	5.2	5.08	0.31





**Figure 10**

Lake Murray Mitigation Site  
Vicinity Map



## El Rancho Peñasquitos Wetland Enhancement Project

The mitigation site is located along Los Peñasquitos Canyon approximately 0.5 mile west of Black Mountain Road in the vicinity of the historically designated Johnson Taylor Adobe of Rancho de los Peñasquitos (City of San Diego HRB Site #75). The site is within the MHPA on County and City of San Diego Open Space Land.



*El Rancho Peñasquitos Wetland Enhancement: Riparian forest with non-native palm targeted for removal*

The El Rancho Project included enhancement of 5.53 acres of southern cottonwood willow riparian forest, by eradicating targeted non-native species. Project efforts began March 26, 2006 and regulatory sign-off was received in early 2010. This project treated 6,720 non-native plants, targeted species included Canary Island date palm, Mexican Fan Palm, Eucalyptus, Peruvian pepper tree (*Schinus terebinthifolius*), Brazilian pepper tree, and edible fig (*Ficus carica*).

The El Rancho Peñasquitos Wetland Enhancement Project has met the success criteria outlined in the Conceptual Mitigation Plan. Many of the larger treated plants have begun to deteriorate and decompose, allowing for the establishment of native species in their direct vicinity. Park and Recreation has taken over long-term management of the site and manages the land consistent with the Multiple Species Conservation Plan which includes targeting the treatment or removal of invasive exotics as part of routine park management. During the 2018 assessment, several small palms were identified in the mitigation area. Canary Island date and Mexican fan palms were removed from multiple locations along the Peñasquitos creek. A total of 14 small palms were removed and disposed of at an appropriate facility.

Mitigation Credit Status			
Habitat Type	Acres	Assigned	Balance
Riparian Forest (Enhancement)	5.53	4.69	0.84







## Otay Mesa Upland Mitigation Bank

The Otay Mesa Mitigation Bank is in the Otay Mesa community of the City of San Diego and occurs within the MHPA. The mitigation site is located on undeveloped land that is surrounded by other City of San Diego Park and Recreation Open Space lands and federal land holdings along the U.S /Mexico border. Five habitat types are found onsite and include maritime succulent scrub, non-native grasslands, ruderal, disturbed habitat, and vernal pool. During the 2018 annual



Otay Mesa Upland Mitigation: Maritime Succulent scrub and new exclusion fencing

monitoring visit it was documented that all the fencing installed in February 2014 was intact and functioning as intended. The lack of precipitation in the previous wet season was evident in the mitigation area. During the 2018 monitoring visit in May, 2018 many areas exhibited limited growth and were visibly stressed by lack of precipitation. Additional fencing was installed in 2017 by the Park and Recreation Department on City owned land surrounding the mitigation bank to help further reduce unauthorized off-road vehicle activity.

Sensitive plant species present onsite include San Diego button-celery (*Eryngium aristulatum* var. *parishii*), variegated dudleya (*Dudleya variegata*), snake cholla (*Opuntia parryi serpentina*), San Diego barrel cactus (*Ferocactus viridescens*), San Diego bur-sage (*Ambrosia chenopodiifolia*), south coast saltbush (*Atriplex pacifica*), and San Diego county viguiera (*Viguiera laciniata*). Notable bird species observed in 2018 within the site include California gnatcatcher. Notable animal species observed include black tailed jackrabbit (*Lepus californicus*) and orange-throated whiptail (*Aspidoscelis hyperythra*).

Mitigation Credit Status			
Habitat Type	Acres	Assigned	Balance
Maritime Succulent Scrub (Tier I)	45.43	33.92	11.51





**Figure 12**

Otay Mesa Upland Mitigation Bank  
Vicinity Map



## Stadium Wetland Mitigation Project

The Stadium Wetland Mitigation Project is located within the floodplain of the San Diego River between I-15 and I-805. The site is approximately 57 acres and was dominated by a high number of non-native species including giant reed (*Arrundo donax*), Peruvian pepper tree, Brazilian pepper tree, pampas grass, Canary Island date palm, and eucalyptus. This project has restored native habitat in the area by removing targeted non-native species, installing native plants, and maintaining and monitoring the site for a minimum of 5-years.



Stadium Mitigation Site Riparian Scrub

Work at the Stadium Wetland Mitigation Project started August 2016 with the initial cleanup and removal of illegal encampments. Construction started December 2016, and included removal of all non-native vegetation, installation of the temporary irrigation system, installation of fencing, and installation of native container plants. To date over 250,000lbs of trash / debris has been removed from the project area, over 27 acres of invasive species were also removed. Construction activities were completed in May 2018 with the installation of the last group of container plants. The site has already surpassed Year Zero success criteria as documented in the Year Zero Monitoring Report. The project is now in Year One of the maintenance and monitoring phase with vegetation communities continuing to diversify.

This site has the potential to provide high quality habitat for a number of regionally sensitive species including least Bell's Vireo, southwestern willow flycatcher (*Empidonax traillii extimus*), western pond turtle (*Actinemys marmorata*), yellow billed cuckoo (*Coccyzus americanus*), and two-striped garter snake (*Thamnophis hammondi*), and also improve water quality, and functionality of the San Diego River.

Mitigation Credits are released from this site on a planned phased approach with 15% released upon acceptance of the Project by regulatory agencies, and an additional 25% released upon completion of the invasive species eradication, 120-day plant establishment, and the start of the Five-Year maintenance period. The ACOE has authorized the release of the 40% of the mitigation credits.<sup>1</sup>

---

<sup>1</sup> ACOE Memo Dated October 2, 2018 has authorized the next phase of credit release, to date 40% of Mitigation credits have been released.

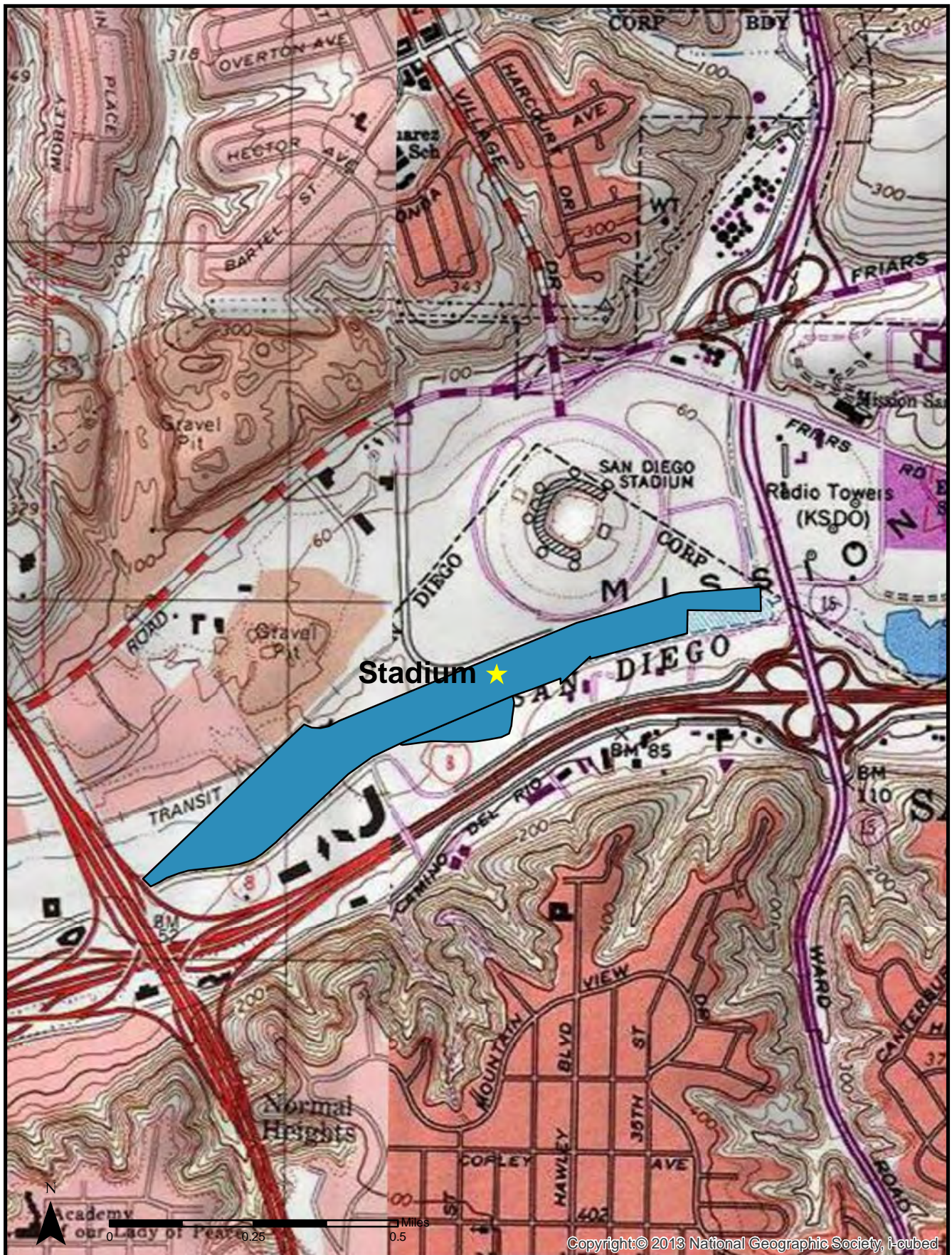


**CANYON SEWER CLEANING PROGRAM AND LONG-TERM SEWER  
MAINTENANCE PROGRAM PROGRESS REPORT**

**October 2018**

<b>Mitigation Credit Status</b>						
<b>Jurisdictional Resource</b>	<b>Vegetation Community</b>	<b>Total</b>	<b>40% Credit Release</b>	<b>Assigned Credits</b>	<b>Balance of 40% Credit Release</b>	<b>Total Balance of Credits</b>
ACOE/RWQCB						
Wetland Waters of the U.S.	Coastal and Valley Freshwater Marsh	0.49	0.196	0.0	0.196	0.49
	Southern Cottonwood – Willow Riparian Forest	19.75	7.9	3.32	4.67	16.52
	Southern Riparian Scrub	6.32	2.52	0.0	2.52	6.32
	<b>Subtotal</b>	<b>26.56</b>	<b>10.62</b>			
Non-wetland Waters of the U.S.*	Southern Cottonwood – Willow Riparian Forest	13.98	5.59	3.06	2.532	4.59
	Southern Riparian Scrub	7.86	3.14	0.0	3.14	7.86
	<b>Subtotal</b>	<b>21.84</b>	<b>8.74</b>			
Riparian Buffer (Non-jurisdictional)	Southern Cottonwood – Willow Riparian Forest	2.61	1.06	1.06	0.0	1.55
	Southern Riparian Scrub	2.85	1.14	.98	.16	1.87
	<b>Subtotal</b>	<b>5.46</b>	<b>2.18</b>			
<b>Total</b>		<b>53.86</b>	<b>21.54</b>	<b>8.42</b>	<b>13.24</b>	<b>45.57</b>
CDFW						
Wetlands	Coastal and Valley Freshwater Marsh	0.49	0.196	0.0	0.196	0.49
	Southern Cottonwood – Willow Riparian Forest	36.34	14.54	7.44	7.20	28.90
	Southern Riparian Forest	17.04	6.82	0.98	5.84	16.06
<b>Total</b>		<b>53.86</b>	<b>21.51</b>	<b>8.43</b>	<b>13.24</b>	<b>45.57</b>
City of San Diego						
Wetlands	Coastal and Valley Freshwater Marsh	0.49	0.196	0.0	0.196	0.49
	Southern Cottonwood – Willow Riparian Forest	36.34	14.54	7.44	7.20	28.90
	Southern Riparian Forest	17.04	6.82	0.98	5.84	16.06
	<b>Subtotal</b>	<b>53.86</b>	<b>21.51</b>	<b>8.43</b>	<b>13.24</b>	<b>45.57</b>
Uplands	Diegan Coastal Sage Scrub	0.97	0.39	0.0	0.39	0.97
<b>Total</b>		<b>54.84</b>	<b>21.94</b>	<b>8.43</b>	<b>13.63</b>	<b>46.54</b>







**Attachment A:  
25 Month Revegetation and Restoration  
Projects Status Table**



**Canyon Restoration/Revegetation Projects (2013-2018)**  
**July 2018**

**Active Projects**

<b>Project</b>	<b>Revegetation or Restoration</b>	<b>Size (acre)</b>	<b>Start of 25 Months</b>	<b>Seeding Date</b>	<b>Planting Date</b>	<b>End of 25 Months</b>	<b>PM</b>	<b>Status</b>
Sonico Spot Repair	Revegetation	0.02	5/21/15	5/21/15	N/A	6/21/17	Frick	Achieved Final Success Standards – Submit Notice of Completion
6610 Potomac Water Break (Water)	Revegetation	0.03	6/02/2015	6/02/15	N/A	7/02/2017	Frick	Achieved Final Success Standards – Submit Notice of Completion
South Chollas	Reveg/Rest	0.4	9/1/15	3/2016	1/7/2016	10/1/17	Tran	25 Month Maintenance and Monitoring
4th Ave. & Quince St. (Water)	Revegetation	0.01	8/24/2015	N/A	N/A	9/24/2017	Frick	Achieved Final Success Standards – Submit Notice of Completion
PS 45 Emergency	Restoration	<0.01	11/16/2015	11/16/2015	5/23/2018	12/16/2017	Paver/Jenkins	25 Month Monitoring – Supplemental planting to meet standards
Alvarado Ct Sewer Emergency I/II	Restoration	<0.01	2/27/2016	2/27/2016	N/A	6/2019	Lavan	25 Month Monitoring– Period extended due to second emergency.
El Camino South	Revegetation	<0.01	1/2016	N/A	N/A	2/2019	Adleberg	25 Month Monitoring
Switzer Canyon	Revegetation	<0.01	4/22/2016	4/22/2016	N/A	5/22/2019	Adleberg	25 Month Monitoring
AWPF North Pueblo	Revegetation	<0.01	4/19/2016	N/A	N/A	5/19/2019	Adleberg	25 Month Monitoring
Mission Valley Canyon Sewer Repair	Revegetation	0.001	11/2016	10/2015	11/2016	12/2018	Lavan	25 Month Monitoring
Sorrento Valley Water Main Leak Emergency Repair (Water)	Reveg/Rest	0.006	1/2017	1/2017	N/A	2/2019	Adleberg	25 Month Monitoring
Point Loma Sludge Pipeline Assessment Friars Road	Revegetation	<0.01	7/08/2016	N/A	N/A	8/2019	Adleberg	25 Month Monitoring
Home Ave TS LTA (Ash Canyon)	Revegetation	0.130	9/23/2016	N/A	N/A	10/23/2018	Paver	25 Month Monitoring
32 <sup>nd</sup> Street LTA	Revegetation	0.166	3/8/17	3/8/17	N/A	4/8/2019	Tran	25 Month Monitoring
Alta La Jolla Water Break (Water)	Restoration	0.172	1/10/2017	10/11/2016	1/10/2017	2/10/2019	Frick	25 Month Maintenance and Monitoring
Mt Elbrus LTA	Restoration	0.021	7/2017	9/25/2017	9/18/2017	8/1/2019	Tran	25 Month Monitoring; Preparing SOW for restoration areas
Trojan Pipeline Valve Repair Emerg (Water)	Revegetation	0.02	4/21/2017	N/A	N/A	5/21/2019	Paver	25 Month Monitoring
Central Tecolote Sewer Break Emergency	Restoration	0.32	5/19/2016	2/19/2016	5/19/2016	6/19/2018	Smith	25 Month Maintenance and Monitoring - Maintenance extended to achieve success standards
Rancho Capistrano Bend WMB Emergency	Restoration	0.01	6/05/2017	N/A	6/05/2017	7/05/2019	Frick	25 Month Maintenance and Monitoring
Alvarado Canyon LTA	Revegetation	0.022	8/2018	TBD	TBD	9/2020	Lavan	25 Month Maintenance and Monitoring
1830 Upas St Sewer Repair	Restoration	<0.01	7/19/2018	N/A	N/A	8/19/2020	Jenkins	25 Month Monitoring
Nimitz Blvd and Catalina Blvd WMB Emergency	Revegetation	0.03	March 2016	Fall 2015	N/A	April 2016	Smith	Achieved Final Success Standards – Submitted Notice of Completion
SR-905 & Picador Blvd WMB Emergency	Revegetation	0,05	11/18/2017	11/18/2017	N/A	12/18/2019	Smith	25 Month Monitoring
55 <sup>th</sup> Street Emergency Sewer Point Repair	Restoration	0.04	3/21/2018	3/21/18	TBD	4/21/2020	Smith	25 Month Maintenance and Monitoring
6692 Plaza Ridge Road WMB Emergency	Revegetation	0.11	6/13/2018	6/13/2018	N/A	7/13/2020	Smith	25 Month Monitoring
South Chocolate (Juniper) Canyon Emergency Sewer Point Repair	Revegetation	<0.01	3/19/2018	3/19/2018	N/A	4/19/2020	Smith	25 Month Monitoring
3555 37 <sup>th</sup> St Water Main Break	Revegetation	0.04	12/09/2017	12/09/17	N/A	1/09/2020	Smith	25 Month Monitoring
Rose Canyon Emergency Sewer Point Repair	Restoration	0.11	TBD	TBD	TBD	TBD	Frick	Obtaining permits and permissions for site access
6363 Greenwich Dr WMB Emergency	Restoration	0.07	TBD	TBD	TBD	TBD	Frick	Water to finish final repairs on site
Stevenson Canyon Emergency Sewer Pipe Protection	Restoration	0.02	TBD	TBD	TBD	TBD	Frick	Preparing SOW for restoration areas
45 <sup>th</sup> and Quince WMB Emergency	Revegetation	0.03	10/16/2017	10/16/2017	N/A		Frick	25 Month Monitoring
San Clemente Emergency Sewer Repair	Revegetation	0.017	4/21/2017	4/21/2017	N/A	5/21/2019	Frick	25 Month Monitoring



Completed Projects				
Canyon/Project	Revegetation or Restoration	Project Initiation	Project Completion	PM
Sonico Spot Repair	Revegetation	5/15/2015	6/21/2017	Frick
Manzanita Break II	Restoration	2/13/2015	3/13/2017	Paver
West SD River Sewer Abandonment	Restoration	2/27/2015	3/27/2017	Frick
Shepard Canyon Water Emerg (Water)	Restoration	3/6/2015	4/6/2017	Smith
Nobel Drive MH 97	Revegetation	2/27/2015	3/27/2017	Paver
Buchanan Emergency	Reveg/Rest	1/12/2015	2/12/2017	Adleberg
Fairway Spot Repairs –La Jolla	Revegetation	1/1/2015	2/1/2017	Paver
Conquistador Water Break (Water)	Restoration	11/20/2014	12/20/2016	Paver
8 <sup>th</sup> Ave Sewer Pipe Repair	Revegetation	10/29/2014	11/29/2016	Paver
Tecolote Golf Course Water Pipe Repair	Restoration	10/1/2014	11/1/2016	Paver
Poe St Pipe Repair	Revegetation	9/12/2014	10/12/2016	Paver
Buchanan Canyon MH 31	Restoration	9/2012	7/10/2017	Adleberg
Otay Pipe Protection	Restoration	11/2013	9/28/2016	Lavan
Rancho Mission LT Streambed	Reveg/Rest	3/2014	9/28/2016	Lavan
Hawk Street Slope Repair (Water)	Revegetation	2/28/2014	9/28/2016	Smith
PS 77 Force Main Inspection	Restoration	3/10/2014	9/28/2016	Smith
Washington Creek Path Maint	Revegetation	5/27/2014	9/28/2016	Lavan
Manzanita Water Break II (Water)	Restoration	6/19/2014	9/28/2016	Paver
Famosa Slough Pipe Repair	Revegetation	11/15/2013	12/15/2015	Paver
Spruce Mh 220 Emergency	Revegetation	11/25/2013	12/25/2015	Paver
Mission Center Canyon	Restoration	4/29/2011	1/27/2016	Tran
Snead Ave MH Raising	Revegetation	11/21/2012	7/13/2015	Balo
Fay Ave/ Draper Street	Revegetation	6/1/2013	7/1/2015	Adleberg
Ocean Blvd Pipe Removal	Restoration	2/15/2013	6/19/2015	Paver
36-inch Water Pipe Repair Black Mountain	Revegetation	5/13/2014	6/19/2015	Paver
Middle Rose MH 160 and Lower MH 9	Restoration	12/5/2012	4/16/2015	VanEvery
Casita Way Sewer Repairs	Revegetation	11/4/2012	2/29/2015	Smith
Mission Ave Sewer Spot Repair	Revegetation	11/21/2012	2/29/2015	Adleberg
Manzanita/Lex Water Break	Restoration	11/29/2012	2/29/2015	Paver
Manzanita Sewer Emergency	Revegetation	12/5/2012	2/29/2015	Paver
Stevenson MH 257 Emergency	Revegetation	12/6/2012	2/29/2015	Paver
Wellington Spot Repairs	Revegetation	10/14/2013	2/29/2015	Paver
Alta View Water Emergency (Water)	Restoration	7/31/2012	10/28/2014	Adleberg
Imperial and Woodman	Revegetation	9/2012	10/28/2014	Adleberg
Euclid and Menlo Restoration	Restoration	11/16/2011	8/28/2014	Smith
Lakeside Ave Emergency	Revegetation/Restoration	4/15/2012	8/28/2014	Paver
Rose (MH 476)	Revegetation/Restoration	11/2008	6/28/2014	Paver
Rose Sinkhole	Revegetation/Restoration	5/23/2011	6/28/2014	Paver
Hotel Circle South Emergency	Restoration	11/9/2011	6/28/2014	Paver
Chollas YMCA	Revegetation	1/18/2012	6/28/2014	Paver
Keighley Street	Revegetation	12/9/2011	2/2014	Balo
Nobel Drive Sewer Repair	Restoration	2/25/2013	2/2014	Paver
Lexington Water Emer (Water)	Restoration	1/2011	1/2014	Balo
Dulzura Flume (Water)	Restoration	9/10/2013	1/2014	Balo
Upas Street	Revegetation	9/29/2011	1/2014	Smith
Dwane and Elaine	Restoration	6/29/2011	9/2013	Smith
Admiral Baker	Revegetation	7/21/2011	9/2013	Balo
East Tecolote	Restoration	11/24/2010	7/2013	White
Carmel Valley Rd (Water)	Revegetation	5/20/2011	7/2013	Balo
Central Tecolote MH 159	Revegetation	5/9/2011	7/2013	Balo
Plaza Ridge (Water)	Revegetation	1/19/2011	5/2013	Smith
33 <sup>rd</sup> and Maple	Revegetation	3/16/2011	5/2013	Smith
Lake Murray (Water)	Restoration	1/2011	3/2013	Balo
San Clemente Emergency	Revegetation	1/2011	3/2013	Balo
San Clemente MH 4 Access	Revegetation	2/2011	3/2013	Balo
Menlo and Redwood	Restoration	11/2010	3/2013	Smith

**Attachment B:**  
**Mitigation Summary Table**



# Mitigation Site Details



Mitigation Site	Mitigation Type	Habitat	USACE	CDFW	City	MHPA	Coastal	Park	Acres	Used	Free	
<b>Penasquitos</b>												
Canyon View (Penasquitos Upland)	Upland Restoration	Coastal Sage Scrub (CSS)	✗	✗	✓	✓	✗	✓	6.4900	1.6005	4.8895	●
		Native Grassland (NG)	✗	✗	✓	✓	✗	✓	0.8900	0.0200	0.8700	●
Central Tecolote Enhancement/Mitigation	Upland Restoration	Coast Live Oak Woodland (CLOW)	✗	✗	✓	✓	✗	✗	0.0400	0.0000	0.0400	●
		Diegan Coastal Sage Scrub (DCSS)	✗	✗	✓	✓	✗	✗	3.0600	0.6180	2.4420	●
		Maritime Succulent Scrub (MSS)	✗	✗	✓	✓	✗	✗	0.0100	0.0000	0.0100	●
		Native Grassland (NG)	✗	✗	✓	✓	✗	✗	0.7100	0.2240	0.4860	●
		Poison Oak Scrub (POS)	✗	✗	✓	✓	✗	✗	0.1000	0.0000	0.1000	●
	Wetland Enhancement	Riparian Forest (RF)	✗	✓	✓	✓	✗	✗	5.8200	1.1824	4.6376	●
		Riparian Forest (RF)	✓	✓	✓	✓	✗	✗	1.5300	0.8852	0.6448	●
El Cuervo Norte	Wetland Creation/Restoration	Riparian Forest (RF)	✓	✓	✓	✓	✗	✓	0.7200	0.6370	0.0830	●
	Wetland Enhancement	Riparian Forest (RF)	✓	✓	✓	✓	✗	✓	0.6800	0.6690	0.0110	●
El Rancho (Penasquitos Enhancement)	Wetland Enhancement	Riparian Forest (RF)	✓	✓	✓	✓	✗	✓	5.5300	4.6868	0.8432	●
Los Penasquitos North	Upland Restoration	Diegan Coastal Sage Scrub (DCSS)	✗	✗	✓	✓	✓	✓	1.0300	1.0250	0.0050	●
	Wetland Creation/Restoration	Freshwater Marsh (FM)	✓	✓	✓	✓	✓	✓	0.2200	0.2200	0.0000	●
		Riparian Woodland (RW)	✓	✓	✓	✓	✓	✓	0.4300	0.4300	0.0000	●
		Southern Willow Scrub (SWS)	✓	✓	✓	✓	✓	✓	3.1500	2.9510	0.1990	●
Penasquitos Eucalyptus Removal	Wetland Creation/Restoration	Riparian Forest (RF)	✓	✓	✓	✓	✗	✓	0.3100	0.3100	0.0000	●
Rose Canyon Wetland and Upland	Upland Restoration	Coastal Sage Scrub (CSS)	✗	✗	✓	✓	✗	✓	4.7500	2.4780	2.2720	●
		Native Grassland (NG)	✗	✗	✓	✓	✗	✓	0.2800	0.0870	0.1930	●
	Wetland Creation/Restoration	Riparian Forest (RF)	✓	✓	✓	✓	✗	✓	0.6200	0.5704	0.0496	●
		Riparian Forest (RF)	✓	✓	✓	✓	✗	✓	2.4200	2.1270	0.2930	●
		Riparian Forest (RF)	✗	✓	✓	✓	✗	✓	2.0100	0.4952	1.5148	●
	Wetland Enhancement	Riparian Forest (RF)	✗	✓	✓	✓	✗	✓	0.6100	0.5532	0.0568	●
San Clemente Wetland and Upland	Upland Restoration	Coast Live Oak Woodland (CLOW)	✗	✗	✓	✓	✗	✓	0.3900	0.1890	0.2010	●

San Clemente Wetland and Upland	Upland Restoration	Coastal Sage Scrub (CSS)	✗	✗	✓	✓	✗	✓	2.4200	1.5555	0.8645	●
	Wetland Creation/Restoration	Emergent Wetland (EW)	✓	✓	✓	✓	✗	✓	0.2000	0.0000	0.2000	●
		Riparian Forest (RF)	✓	✓	✓	✓	✗	✓	0.8800	0.7590	0.1210	●
		Riparian Forest (RF)	✗	✓	✓	✓	✗	✓	1.7600	1.2280	0.5320	●
		Streambed (STREAMBED)	✓	✓	✓	✓	✗	✓	0.0200	0.0130	0.0070	●
Tecolote - Tree of Heaven removal	Wetland Enhancement	Riparian Forest (RF)	✓	✓	✓	✓	✗	✓	0.2500	0.2500	0.0000	●
Tecolote Canyon Wetland and Upland	Upland Restoration	Coastal Sage Scrub (CSS)	✗	✗	✓	✓	✗	✓	3.3000	3.2998	0.0002	●
		Native Grassland (NG)	✗	✗	✓	✓	✗	✓	0.0700	0.0560	0.0140	●
	Wetland Creation/Restoration	Riparian Forest (RF)	✓	✓	✓	✓	✗	✓	1.1900	0.8020	0.3880	●
		Southern Willow Scrub (SWS)	✓	✓	✓	✓	✗	✓	0.4200	0.4090	0.0110	●
San Diego												
Camino del Rio North - San Diego River Creation	Wetland Creation/Restoration	Riparian Forest (RF)	✓	✓	✓	✓	✗	✗	3.4300	2.1929	1.2371	●
Lake Murray	Upland Restoration	Diegan Coastal Sage Scrub (DCSS)	✗	✗	✓	✓	✗	✓	5.2000	5.0872	0.1128	●
	Wetland Enhancement	Southern Willow Scrub (SWS)	✓	✓	✓	✓	✗	✓	2.5000	1.5329	0.9671	●
Rancho Mission Enhancement	Wetland Enhancement	Southern Willow Scrub (SWS)	✓	✓	✓	✓	✗	✗	8.7400	2.1322	6.6078	●
Stadium	Upland Restoration	Diegan Coastal Sage Scrub (DCSS)	✗	✗	✓	✓	✗	✗	0.9690	0.0000	0.9690	●
	Wetland Enhancement	Freshwater Marsh (FM)	✓	✓	✓	✓	✗	✗	0.3680	0.0000	0.3680	●
		Riparian Forest (RF)	✓	✓	✓	✓	✗	✗	13.9940	0.0000	13.9940	●
		Riparian Forest (RF)	✓	✓	✓	✓	✗	✗	7.6560	0.0000	7.6560	●
		Riparian Forest (RF)	✓	✓	✓	✓	✗	✗	1.7830	0.0000	1.7830	●
		Southern Riparian Scrub (SRS)	✓	✓	✓	✓	✗	✗	3.7930	0.0000	3.7930	●
		Southern Riparian Scrub (SRS)	✓	✓	✓	✓	✗	✗	1.3940	0.0000	1.3940	●
		Southern Riparian Scrub (SRS)	✓	✓	✓	✓	✗	✗	0.8560	0.0000	0.8560	●
		Southern Riparian Scrub (SRS)	✓	✓	✓	✓	✗	✗	0.0550	0.0000	0.0550	●
	Wetland Reestablishment	Freshwater Marsh (FM)	✓	✓	✓	✓	✗	✗	0.0020	0.0000	0.0020	●
		Riparian Forest (RF)	✓	✓	✓	✓	✗	✗	0.8020	0.0000	0.8020	●
		Southern Riparian Scrub (SRS)	✓	✓	✓	✓	✗	✗	1.5310	0.0000	1.5310	●
		Southern Riparian Scrub (SRS)	✓	✓	✓	✓	✗	✗	0.0690	0.0000	0.0690	●
	Wetland Rehabilitation	Freshwater Marsh (FM)	✓	✓	✓	✓	✗	✗	5.7560	0.0000	5.7560	●
		Riparian Forest (RF)	✓	✓	✓	✓	✗	✗	6.3280	0.0000	6.3280	●
Riparian Forest (RF)		✓	✓	✓	✓	✗	✗				●	



Stadium	Wetland Rehabilitation	Riparian Forest (RF)	✓	✓	✓	✓	✗	✗	0.8260	0.0000	0.8260	●
		Southern Riparian Scrub (SRS)	✓	✓	✓	✓	✗	✗	1.9930	0.0000	1.9930	●
		Southern Riparian Scrub (SRS)	✓	✓	✓	✓	✗	✗	4.9400	0.0000	4.9400	●
		Southern Riparian Scrub (SRS)	✓	✓	✓	✓	✗	✗	1.7280	0.0000	1.7280	●
Tijuana												
Marron Valley Cornerstone Lands Conservation Bank	Upland Bank	Diegan Coastal Sage Scrub (DCSS)	✗	✗	✓	✓	✗	✗	7.5450	6.8030	0.7420	●
Otay Mesa Mitigation Bank	Upland Bank	Maritime Succulent Scrub (MSS)	✗	✗	✓	✓	✗	✗	13.2400	1.7280	11.5120	●

**Attachment C:**  
**Mitigation Assignment Summary**  
**Table**





## Mitigation by Mitigation Site

Mitigation Type	Mitigation Habitat	Project	Impact Habitat	Mitigation Acres	In/Adjacent/Out Watershed	In/Out Canyon	In/Out Project
Camino del Rio North - San Diego River Creation 2.1929							
Wetland				2.1929			
Wetland Creation/Restoration	Riparian Forest (RF)	15 West and Elanus	Southern Willow Scrub (SWS)	0.0500	In	Out	Out
		32nd Street - Huckleberry LT	Riparian Scrub (RS)	0.0070	Ajacent	Out	Out
		54th & Maisel	Freshwater Marsh (FM)	0.0080	In	Out	Out
		60th Street Pipe Relocation/Permanent Access	Disturbed Wetland (DWET)	0.0050	In	Out	Out
		Alvarado Court Emergency Sewer Repair	Freshwater Marsh (FM)	0.0800	In	Out	Out
		Alvarado Court Emergency Sewer Repair	Southern Willow Scrub (SWS)	0.0060	In	Out	Out
		Alvarado Court Emergency Sewer Repair	Southern Willow Scrub (SWS)	0.0100	In	Out	Out

Alvarado Court Sewer Crossing	Southern Willow Scrub (SWS)	0.0050	In	Out	Out
Alvarado Court Sewer Crossing	Non-Vegetated Channel (NVC)	0.0020	In	Out	Out
Alvarado LT	Non-Vegetated Channel (NVC)	0.0350	In	Out	Out
Alvarado LT	Southern Willow Scrub (SWS)	0.0250	In	Out	Out
Alvarado LT	Southern Willow Scrub (SWS)	0.0010	In	Out	Out
Alvarado LT	Freshwater Marsh (FM)	0.0060	In	Out	Out
Alvarado LT	Mule Fat Scrub (MFS)	0.0020	In	Out	Out
Alvarado Trunk Sewer	Disturbed Wetland (DWET)	0.0220	In	Out	Out
Buchanan	Disturbed Wetland (DWET)	0.3220	In	Out	Out
Buchanan	Southern Willow Scrub (SWS)	0.0108	In	Out	Out
Buchanan Group Job 689	Non-Vegetated Channel (NVC)	0.0080	In	Out	Out
Buchanan Group Job 689	Non-Vegetated Channel (NVC)	0.0010	In	Out	Out
Buchanan LT	Disturbed Wetland (DWET)	0.0600	In	Out	Out
Buchanan Sewer Blockage Emergency	Southern Willow Scrub (SWS)	0.0080	In	Out	Out
Buchanan Sewer Blockage Emergency	Southern Willow Scrub (SWS)	0.0030	In	Out	Out
Chocolate Access MH 273 to 267	Emergent Wetland (EW)	0.0064	Ajacent	Out	Out
Chocolate Canyon Emergency Access MH 245	Emergent Wetland (EW)	0.0030	Ajacent	Out	Out
Chollas Dam Vegetation Removal	Freshwater Marsh (FM)	0.0220	Ajacent	Out	Out
Chollas Exposed Water Main Repair	Riparian Scrub (RS)	0.0140	Ajacent	Out	Out
Dove Canyon Emergency Repair	Non-Vegetated Channel (NVC)	0.0010	In	Out	Out
Dove Canyon Pipe Encasement	Non-Vegetated Channel (NVC)	0.0005	In	Out	Out
Elanus & Murray Canyons (I-15 & Clairemont Mesa Bl	Southern Willow Scrub (SWS)	0.0070	In	Out	Out
Elanus (I-15 & Clairemont Mesa Blvd) LT	Emergent Wetland (EW)	0.0050	In	Out	Out
Emergency Repairs in South Juniper Canyon at Manhole 274	Non-Vegetated Channel (NVC)	0.0020	Ajacent	Out	Out
Euclid & Menlo (3343 Menlo Ave Spalsh Apron	Non-Vegetated Channel (NVC)	0.0040	Ajacent	Out	Out
Euclid & Menlo (47th & Thorn Sewer Maint & Emerg)	Disturbed Wetland (DWET)	0.0800	Ajacent	Out	Out
Federal & Chollas	Disturbed Wetland (DWET)	0.0008	Ajacent	Out	Out
Fox Canyon (University & 49th) Emergency Repair	Non-Vegetated Channel (NVC)	0.0020	Ajacent	Out	Out
Hopkins	Disturbed Wetland (DWET)	0.0200	Out	Out	Out
Hopkins (Calle Abajo Emergency)	Non-Vegetated Channel (NVC)	0.0020	Out	Out	Out
Huckleberry (32nd St Canyon Emergency Maintenance)	Disturbed Wetland (DWET)	0.0400	Ajacent	Out	Out
I-15 & Adams	Emergent Wetland (EW)	0.0040	In	Out	Out
Junipero Serra (Jackson/Mission Gorge Emergency)	Southern Willow Scrub (SWS)	0.0100	In	Out	Out
Junipero Serra (Mission Gorge Emergency Repair)	Riparian Scrub (RS)	0.0300	In	Out	Out



Junipero Serra (Superior Ready Mix Emergency Repai	Riparian Scrub (RS)	0.3000	In	Out	Out
Junipero Serra (Superior Ready Mix Emergency Repai	Southern Cottonwood-Willow Riparian Forest (SCWRF)	0.0900	In	Out	Out
Lake Murray Emergency Cleaning	Southern Willow Scrub (SWS)	0.0100	In	Out	Out
Lake Murray Trunk Sewer and Permanent Access Path	Freshwater Marsh (FM)	0.0700	In	Out	Out
Lake Murray Trunk Sewer and Permanent Access Path	Southern Willow Scrub (SWS)	0.0100	In	Out	Out
Lake Murray Trunk Sewer and Permanent Access Path	Southern Willow Scrub (SWS)	0.1900	In	Out	Out
Lexington Long-Term Access	Non-Vegetated Channel (NVC)	0.0800	Ajacent	Out	Out
Lexington Pipe Encasement Emergency 2016	Non-Vegetated Channel (NVC)	0.0005	In	Out	Out
Lexington Pipe Encasement Emergency 2016	Non-Vegetated Channel (NVC)	0.0005	In	Out	Out
Manhole 101 Emergency Repairs	Waters of the U.S.	0.0040	In	Out	Out
Market & Euclid (MH 88 Repair at Encanto Creek)	Southern Willow Scrub (SWS)	0.0030	Ajacent	Out	Out
Mission Center Canyon B	Emergent Wetland (EW)	0.0200	In	Out	Out
Mission Center Canyon B	Non-Vegetated Channel (NVC)	0.0350	In	Out	Out
Mission Center Canyon B	Riparian Scrub (RS)	0.0250	In	Out	Out
Mission Center Canyon B	Disturbed Wetland (DWET)	0.0140	In	Out	Out
Mission Center Canyon Emergency Sewer Repair	Freshwater Marsh (FM)	0.0160	In	Out	Out
Mission Center Canyon Emergency Sewer Repair	Freshwater Marsh (FM)	0.0070	In	Out	Out
Mission Center Canyon Emergency Sewer Repair	Southern Willow Scrub (SWS)	0.0030	In	Out	Out
Mission Center Canyon Emergency Sewer Repair	Southern Willow Scrub (SWS)	0.0010	In	Out	Out
Mission Center MH 101 Protection and Access Path Repairs	Non-Vegetated Channel (NVC)	0.0040	In	Out	Out
Mission Center Rd. (Kearny Mesa)	Southern Willow Scrub (SWS)	0.0070	In	Out	Out
Murphy Canyon MH114 Locate and Raise	Southern Willow Scrub (SWS)	0.0140	In	Out	Out
Murphy Canyon TS Access and Repair	Freshwater Marsh (FM)	0.0340	In	Out	Out
Norfolk (Fairmont & Montezuma)	Southern Willow Scrub (SWS)	0.0030	In	Out	Out
Norfolk LT	Non-Vegetated Channel (NVC)	0.0050	In	Out	Out
Otay Valley TS Pipe Protection	Non-Vegetated Channel (NVC)	0.0180	Out	Out	Out
Presidio (Palm Cyn) GJ665	Non-Vegetated Channel (NVC)	0.0017	In	Out	Out
Presidio (Palm Cyn) GJ665	Non-Vegetated Channel (NVC)	0.0120	In	Out	Out
Presidio (Palm Cyn) GJ665	Riparian Scrub (RS)	0.1650	In	Out	Out
Rancho Mission (Mission Gorge Canyon, Conestoga Co	Disturbed Wetland (DWET)	0.0050	In	Out	Out
Rancho Mission LT	Non-Vegetated Channel (NVC)	0.0070	In	Out	Out
Rancho Mission LT	Southern Willow Scrub (SWS)	0.0070	In	Out	Out
San Diego Mission Rd Emergency	Freshwater Marsh (FM)	0.0100	In	Out	Out

		San Diego Mission Rd Emergency	Southern Willow Scrub (SWS)	0.0100	In	Out	Out
		Shawn Canyon Pipe Repair Emergency FSN 32934	Non-Vegetated Channel (NVC)	0.0015	In	Out	Out
		Shepherd	Southern Willow Scrub (SWS)	0.0100	In	Out	Out
		Shepherd LT	Riparian Woodland (RW)	0.0300	In	Out	Out
		Shepherd LT	Riparian Scrub (RS)	0.0200	In	Out	Out
		Shepherd LT	Disturbed Wetland (DWET)	0.0150	In	Out	Out
		Valencia Canyon Emergency Repair & Maintenance	Mule Fat Scrub (MFS)	0.0040	Ajacent	Out	Out
		Washington Creek Canyon Manhole 85 Emergency	Non-Vegetated Channel (NVC)	0.0002	Ajacent	Out	Out

### Canyon View (Penasquitos Upland) 1.6205

		Upland		1.6205			
Upland Restoration	Coastal Sage Scrub (CSS)	Alta La Jolla Main Break Emergency	Diegan Coastal Sage Scrub (DCSS)	0.1170	In	Out	Out
		Lopez Canyon LT	Diegan Coastal Sage Scrub (DCSS)	0.3000	In	Out	Out
		Lopez Canyon LT	Non-Native Grassland (NNG)	0.0130	In	Out	Out
		Lopez Emergency Cleaning	Non-Native Grassland (NNG)	0.0500	In	Out	Out
		Lopez Emergency Cleaning	Southern Mixed Chaparral (SMC)	0.0100	In	Out	Out
		Lopez Emergency Cleaning	Diegan Coastal Sage Scrub (DCSS)	0.5100	In	Out	Out
		Lopez MH 102 Emergency	Diegan Coastal Sage Scrub (DCSS)	0.0220	In	Out	Out
		Manhole 477 Raise	Diegan Coastal Sage Scrub (DCSS)	0.0040	In	Out	Out
		Penasquitos Lagoon Mh 190 Access	Diegan Coastal Sage Scrub (DCSS)	0.0060	In	Out	Out
		Penasquitos Views Trunk Sewer	Non-Native Grassland (NNG)	0.5200	In	In	Out
		Pottery Canyon Sewer Spill Emergency	Coastal Sage Scrub (CSS)	0.0100	In	Out	Out
		PS64 Dual Force Main Condition Assessment	Non-Native Grassland (NNG)	0.0025	In	Out	Out
		PS64 Dual Force Main Condition Assessment	Diegan Coastal Sage Scrub (DCSS)	0.0150	In	Out	Out
		Pump Station 45 Pipe Repair Emergency	Diegan Coastal Sage Scrub (DCSS)	0.0120	In	Out	Out
		Pump Station 77 Line Stop Manhole Access	Diegan Coastal Sage Scrub (DCSS)	0.0090	Ajacent	Out	Out
	Native Grassland (NNG)	Lopez Emergency Cleaning	Scrub Oak Chaparral (SOC)	0.0200	In	Out	Out

### Central Tecolote Enhancement/Mitigation 2.9096

		Upland		0.8420			
Upland Restoration	Diegan Coastal Sage Scrub (DCSS)	East Tecolote Canyon Pipe Encasemt Protection Proj	Non-Native Grassland (NNG)	0.0200	In	Out	Out



	Scrub (DCSS)	Tecolote LT	Southern Mixed Chaparral (SMC)	0.0500	In	In	Out
		Tecolote LT	Diegan Coastal Sage Scrub (DCSS)	0.4580	In	In	Out
		Tecolote LT	Poison Oak Scrub (POS)	0.0900	In	In	Out
	Native Grassland (NG)	Balboa & I-15	Coast Live Oak Woodland (CLOW)	0.1200	Ajacent	Out	Out
		East Tecolote Canyon Pipe Encasemt Protection Proj	Coast Live Oak Woodland (CLOW)	0.0220	In	Out	Out
		East Tecolote Canyon Pipe Encasemt Protection Proj	Native Grassland (NG)	0.0020	In	Out	Out
		Tecolote LT	Coast Live Oak Woodland (CLOW)	0.0600	In	In	Out
		Tecolote LT	Maritime Succulent Scrub (MSS)	0.0200	In	In	Out
				<b>Wetland</b>	<b>2.0676</b>		
Wetland Enhancement	Riparian Forest (RF)	Central Tecolote Sewer Break Emergency	Southern Riparian Forest (SRF)	0.0460	In	In	Out
		Central Tecolote Sewer Break Emergency	Southern Riparian Forest (SRF)	0.2220	In	In	Out
		Central Tecolote Sewer Break Emergency	Southern Willow Scrub (SWS)	0.0020	In	In	Out
		East Tecolote (East Clairemont)	Southern Willow Scrub (SWS)	0.0001	In	Out	Out
		East Tecolote (East Clairemont)	Southern Coast Live Oak Riparian Forest (SCLORF)	0.0080	In	Out	Out
		East Tecolote (East Clairemont) LT	Southern Riparian Forest (SRF)	0.1220	In	Out	Out
		East Tecolote (East Clairemont) LT	Southern Riparian Forest (SRF)	0.0080	In	Out	Out
		East Tecolote (East Clairemont) LT	Southern Riparian Forest (SRF)	0.0540	In	Out	Out
		East Tecolote (East Clairemont) LT	Southern Willow Scrub (SWS)	0.0100	In	Out	Out
		East Tecolote (East Clairemont) LT	Southern Willow Scrub (SWS)	0.0170	In	Out	Out
		East Tecolote (East Clairemont) LT	Southern Willow Scrub (SWS)	0.0010	In	Out	Out
		East Tecolote (East Clairemont) LT	Southern Willow Scrub (SWS)	0.0030	In	Out	Out
		East Tecolote (East Clairemont) LT	Freshwater Marsh (FM)	0.0020	In	Out	Out
		East Tecolote (East Clairemont) LT	Freshwater Marsh (FM)	0.0080	In	Out	Out
		East Tecolote (East Clairemont) LT	Freshwater Marsh (FM)	0.0010	In	Out	Out
		East Tecolote (East Clairemont) LT	Non-Vegetated Channel (NVC)	0.0010	In	Out	Out
		East Tecolote (East Clairemont) LT	Non-Vegetated Channel (NVC)	0.0020	In	Out	Out
		East Tecolote Canyon Pipe Encasemt Protection Proj	Open Water (OW)	0.0230	In	Out	Out
		East Tecolote Canyon Pipe Encasemt Protection Proj	Southern Willow Scrub (SWS)	0.0360	In	Out	Out

East Tecolote Canyon Pipe Encasemt Protection Proj	Southern Riparian Forest (SRF)	0.0600	In	Out	Out
East Tecolote Emergency MH 218	Southern Riparian Forest (SRF)	0.0960	In	Out	Out
East Tecolote LT (Phase 1)	Southern Riparian Forest (SRF)	0.0120	In	Out	Out
East Tecolote Manholes 223 and 224 Emergency	Southern Riparian Forest (SRF)	0.0680	In	Out	Out
East Tecolote Manholes 223 and 224 Emergency	Freshwater Marsh (FM)	0.0390	In	Out	Out
East Tecolote Manholes 223 and 224 Emergency	Non-Vegetated Channel (NVC)	0.0150	In	Out	Out
East Tecolote Manholes 223 and 224 Emergency	Southern Willow Scrub (SWS)	0.0330	In	Out	Out
Park Mesa Way	Southern Willow Scrub (SWS)	0.1500	In	Out	Out
Tecolote (including Mt. Elbrus)	Southern Willow Scrub (SWS)	0.0200	In	In	Out
Tecolote (including Mt. Elbrus)	Southern Coast Live Oak Riparian Forest (SCLORF)	0.0400	In	In	Out
Tecolote (including Mt. Elbrus)	Southern Willow Scrub (SWS)	0.1100	In	In	Out
Tecolote Emergency Pipe Repair (Crossing)	Southern Willow Scrub (SWS)	0.0080	In	In	Out
Tecolote Emergency Pipe Repair (Crossing)	Southern Coast Live Oak Riparian Forest (SCLORF)	0.0040	In	In	Out
Tecolote Emergency Pipe Repair (Crossing)	Emergent Wetland (EW)	0.0020	In	In	Out
Tecolote LT	Southern Riparian Forest (SRF)	0.1836	In	In	Out
Tecolote LT	Southern Riparian Forest (SRF)	0.4984	In	In	Out
Tecolote LT	Southern Willow Scrub (SWS)	0.0300	In	In	Out
Tecolote LT	Mule Fat Scrub (MFS)	0.0100	In	In	Out
Tecolote LT	Non-Vegetated Channel (NVC)	0.0200	In	In	Out
Tecolote MH 101 Emergency	Mule Fat Scrub (MFS)	0.0005	In	In	Out
Tecolote Mt. Ashmun Pipe Protection Emergency	Riparian Forest (RF)	0.0200	In	In	Out
Tecolote Mt. Ashmun Pipe Protection Emergency	Non-Vegetated Channel (NVC)	0.0070	In	In	Out
Tecolote Mt. Ashmun Pipe Protection Erosion Contro	Riparian Forest (RF)	0.0040	In	In	Out
Tecolote Mt. Ashmun Pipe Protection Erosion Contro	Southern Willow Scrub (SWS)	0.0010	In	In	Out
Tecolote Pipe Repair Near Manhole 346	Southern Riparian Forest (SRF)	0.0700	In	In	Out

#### El Cuervo Norte 1.3060

		Wetland	1.3060			
Wetland Creation/Restoration	Riparian Forest (RF)	Acuna	Mule Fat Scrub (MFS)	0.0020	In	Out
		Acuna	Disturbed Wetland (DWET)	0.0400	In	Out
		Acuna	Southern Willow Scrub (SWS)	0.0800	In	Out



Wetland Enhancement	Riparian Forest (RF)	Acuna Street Emergency	Southern Willow Scrub (SWS)	0.0400	In	Out	Out
		Penasquitos Bluffs (Finger Canyon Emergency)	Southern Willow Scrub (SWS)	0.0200	In	Out	Out
		Penasquitos Bluffs (Finger Canyon Emergency)	Coastal and Valley Freshwater Marsh (CVFM)	0.0600	In	Out	Out
		San Clemente (Emergency Repairs Combined)	Mule Fat Scrub (MFS)	0.0200	In	Out	Out
		San Clemente (Emergency Repairs Combined)	Southern Willow Scrub (SWS)	0.0030	In	Out	Out
		San Clemente (Emergency Repairs Combined)	Riparian Woodland (RW)	0.0520	In	Out	Out
		Stevenson	Southern Willow Scrub (SWS)	0.2800	In	Out	Out
		Stevenson	Mule Fat Scrub (MFS)	0.0200	In	Out	Out
		Torreyana Sewer Repair	Non-Vegetated Channel (NVC)	0.0200	In	Out	Out
	Riparian Forest (RF)	Acuna	Southern Willow Scrub (SWS)	0.0800	In	Out	Out
		Acuna	Mule Fat Scrub (MFS)	0.0020	In	Out	Out
		Acuna	Disturbed Wetland (DWET)	0.0400	In	Out	Out
		Acuna Street Emergency	Southern Willow Scrub (SWS)	0.0400	In	Out	Out
		Penasquitos Bluffs (Finger Canyon Emergency)	Southern Willow Scrub (SWS)	0.0200	In	Out	Out
		Penasquitos Bluffs (Finger Canyon Emergency)	Coastal and Valley Freshwater Marsh (CVFM)	0.0600	In	Out	Out
		San Clemente (Emergency Repairs Combined)	Mule Fat Scrub (MFS)	0.0200	In	Out	Out
		San Clemente (Emergency Repairs Combined)	Southern Willow Scrub (SWS)	0.0030	In	Out	Out
		San Clemente (Emergency Repairs Combined)	Riparian Woodland (RW)	0.1040	In	Out	Out
		Stevenson	Southern Willow Scrub (SWS)	0.2800	In	Out	Out
		Stevenson	Mule Fat Scrub (MFS)	0.0200	In	Out	Out

#### El Rancho (Penasquitos Enhancement) 4.6868

		Wetland		4.6868			
Wetland Enhancement	Riparian Forest (RF)	Acuna LT	Southern Willow Scrub (SWS)	0.0100	In	Out	Out
		Balboa Terrace Trunk Sewer Replacement	Non-Vegetated Channel (NVC)	0.0140	In	Out	Out
		Balboa Terrace Trunk Sewer Replacement	Southern Willow Scrub (SWS)	0.0640	In	Out	Out
		Balboa Terrace Trunk Sewer Replacement	Oak Riparian Forest (ORF)	0.0060	In	Out	Out
		Balboa Terrace Trunk Sewer Replacement	Mule Fat Scrub (MFS)	0.0220	In	Out	Out
		Balboa Terrace Trunk Sewer Replacement	Freshwater Marsh (FM)	0.0160	In	Out	Out
		Balboa Terrace Trunk Sewer Replacement	Freshwater Marsh (FM)	0.0240	In	Out	Out
		Balboa Terrace Trunk Sewer Replacement	Disturbed Wetland (DWET)	0.1070	In	Out	Out
		Black Mountain Road Finger Canyon	Freshwater Marsh (FM)	0.0060	In	In	Out
		Carmel Valley Rd Emergency Water Break	Southern Willow Scrub (SWS)	0.0160	In	Out	Out
		Carmel Valley Rd Emergency Water Break	Riparian Scrub (RS)	0.0520	In	Out	Out

Carroll and Mesa Rim	Southern Willow Scrub (SWS)	0.1500	In	Out	Out
Carroll and Mesa Rim	Southern Coast Live Oak Riparian Forest (SCLORF)	0.2000	In	Out	Out
Carroll Canyon Emergency Sewer Repair	Non-Vegetated Channel (NVC)	0.0400	In	Out	Out
Carroll Canyon Emergency Sewer Repair	Southern Arroyo Willow Riparian Forest (SAWRF)	0.0600	In	Out	Out
Gesner/Huron	Riparian Woodland (RW)	0.1100	In	Out	Out
I-5/SR-52 Maintenance Project	Southern Willow Scrub (SWS)	0.0300	In	Out	Out
Lopez Canyon LT	Southern Willow Scrub (SWS)	0.0400	In	Out	Out
Lopez Canyon LT	Riparian Woodland (RW)	0.0150	In	Out	Out
Lopez Canyon LT MH 13 Access	Alkali Marsh (AM)	0.3000	In	Out	Out
Lopez Emergency Cleaning	Emergent Wetland (EW)	0.0010	In	Out	Out
Lopez Emergency Cleaning	Mule Fat Scrub (MFS)	0.0400	In	Out	Out
Lopez Emergency Cleaning	Riparian Forest (RF)	0.0080	In	Out	Out
Lopez Emergency Cleaning	Southern Willow Scrub (SWS)	0.0800	In	Out	Out
Lower Rose Canyon Emergency Repairs (MH 15)	Southern Willow Scrub (SWS)	0.3200	In	Out	Out
Manhole 477 Raise	Freshwater Marsh (FM)	0.0090	In	Out	Out
Middle Rose Cyn MH 160 Emergency	Southern Willow Scrub (SWS)	0.0200	In	Out	Out
Monte Verde Sewer Improvements	Southern Riparian Forest (SRF)	0.0400	In	Out	Out
Monte Verde Sewer Improvements	Southern Riparian Forest (SRF)	0.0400	In	Out	Out
Old Rose Canyon Sewer Relocation Project	Southern Willow Scrub (SWS)	0.0400	In	Out	Out
Old Rose Canyon Sewer Relocation Project	Mule Fat Scrub (MFS)	0.0070	In	Out	Out
Old Rose Canyon Sewer Relocation Project	Freshwater Marsh (FM)	0.0020	In	Out	Out
Park Mesa LT	Southern Willow Scrub (SWS)	0.0300	In	Out	Out
Park Mesa LT	Southern Willow Scrub (SWS)	0.0050	In	Out	Out
Penasquitos Bluffs LT	Southern Willow Scrub (SWS)	0.0070	In	Out	Out
Penasquitos Bluffs LT	Southern Willow Scrub (SWS)	0.0030	In	Out	Out
Penasquitos Bluffs LT	Freshwater Marsh (FM)	0.0140	In	Out	Out
Penasquitos Bluffs LT	Alkali Marsh (AM)	0.0100	In	Out	Out
Penasquitos Bluffs LT	Alkali Marsh (AM)	0.0040	In	Out	Out
Penasquitos Preserve (East of Black Mountain Road)	Southern Cottonwood-Willow Riparian Forest (SCWRF)	0.1800	In	In	Out
Penasquitos Preserve LT	Southern Cottonwood-Willow Riparian Forest (SCWRF)	0.2400	In	In	Out
Penasquitos Preserve LT	Coast Live Oak Woodland (CLOW)	0.0120	In	In	Out



Penasquitos Preserve LT	Mule Fat Scrub (MFS)	0.0320	In	In	Out
Penasquitos Preserve LT	Southern Coast Live Oak Riparian Forest (SCLORF)	0.1060	In	In	Out
Penasquitos Preserve LT	Freshwater Marsh (FM)	0.0450	In	In	Out
Penasquitos Preserve LT	Non-Vegetated Channel (NVC)	0.0050	In	In	Out
Penasquitos View Emergency	Cismontane Alkali Marsh (CAM)	0.0020	In	Out	Out
Rose Canyon ER Repairs between 9/01 and 5/03	Riparian Woodland (RW)	0.0400	In	Out	Out
Rose Canyon ER Repairs between 9/01 and 5/03	Non-Vegetated Channel (NVC)	0.0018	In	Out	Out
Rose Canyon ER Repairs between 9/01 and 5/03	Mule Fat Scrub (MFS)	0.0300	In	Out	Out
Rose Canyon ER Repairs between 9/01 and 5/03	Southern Willow Scrub (SWS)	0.0300	In	Out	Out
San Clemente Canyon Access Path LT Project	Southern Cottonwood-Willow Riparian Forest (SCWRF)	0.2660	In	Out	Out
San Clemente Canyon Access Path LT Project	Southern Coast Live Oak Riparian Forest (SCLORF)	0.6400	In	Out	Out
San Clemente Emergency Sewer Encasement Repair	Southern Coast Live Oak Riparian Forest (SCLORF)	0.0400	In	Out	Out
Sorrento Valley Water Main Leak Emergency	Freshwater Marsh (FM)	0.0020	In	Out	Out
Sorrento Valley Water Main Leak Emergency	Southern Willow Scrub (SWS)	0.0100	In	Out	Out
Stevenson Long Term Access Project	Non-Vegetated Channel (NVC)	0.0280	In	Out	Out
Stevenson Long Term Access Project	Southern Willow Scrub (SWS)	0.0280	In	Out	Out
Stevenson Long Term Access Project	Mule Fat Scrub (MFS)	0.0850	In	Out	Out
Van Nuys Canyon Emergency Sewer Repair Project	Non-Vegetated Channel (NVC)	0.0200	In	Out	Out
Van Nuys Canyon MH # 91 Sewer Blockage	Non-Vegetated Channel (NVC)	0.1300	In	Out	Out
Van Nuys Canyon MH # 91 Sewer Blockage	Mule Fat Scrub (MFS)	0.2900	In	Out	Out
Van Nuys Canyon MHs 113, 114 and 93	Non-Vegetated Channel (NVC)	0.0030	In	Out	Out
Van Nuys Installation of 2 36-inch Pipe Culverts	Southern Willow Scrub (SWS)	0.0300	In	Out	Out
Van Nuys MH #114 Sewage Leak Investigation	Non-Vegetated Channel (NVC)	0.0030	In	Out	Out
Van Nuys MH #124 Sewer Leak	Non-Vegetated Channel (NVC)	0.0300	In	Out	Out
Van Nuys MH #92-76 Four Sewer Breaks (Upper Canyon	Mule Fat Scrub (MFS)	0.1460	In	Out	Out
Van Nuys MH #92-76 Four Sewer Breaks (Upper Canyon	Disturbed Wetland (DWET)	0.2500	In	Out	Out

#### Lake Murray 6.6201

**Upland 5.0872**

Upland Restoration	Diegan Coastal Sage Scrub (DCSS)	32nd Street - Huckleberry LT	Non-Native Grassland (NNG)	0.0090	Ajacent	Out	Out
--------------------	----------------------------------	------------------------------	----------------------------	--------	---------	-----	-----

Scrub (DCSS)	32nd Street - Huckleberry LT	Coastal Sage- Chaparral (CSC)	0.0020	Ajacent	Out	Out
	55th Street Emergency Sewer Point Repair	Diegan Coastal Sage Scrub (DCSS)	0.0300	In	Out	Out
	Alvarado Court Emergency Sewer Repair	Broom Baccharis Scrub (BBS)	0.0300	In	Out	Out
	Alvarado Court Emergency Sewer Repair	Diegan Coastal Sage Scrub (DCSS)	0.1000	In	Out	Out
	Alvarado Court Emergency Sewer Repair	Diegan Coastal Sage Scrub (DCSS)	0.0600	In	Out	Out
	Alvarado TS MH 459 and 458 Maintenance	Diegan Coastal Sage Scrub (DCSS)	0.0050	In	Out	Out
	Balboa & I-15	Diegan Coastal Sage Scrub (DCSS)	0.0100	In	Out	Out
	Balboa & I-15	Diegan Coastal Sage Scrub (DCSS)	0.0100	In	Out	Out
	Balboa & I-15	Southern Mixed Chaparral (SMC)	0.0900	In	Out	Out
	Balboa & I-15	Disturbed Coastal Sage Scrub (CSS-D)	0.0500	In	Out	Out
	Buchanan Sewer Blockage Emergency	Southern Mixed Chaparral (SMC)	0.0230	In	Out	Out
	Buchanan Sewer Blockage Emergency	Diegan Coastal Sage Scrub (DCSS)	0.0320	In	Out	Out
	Cardinal Drive Sewer Emergency	Diegan Coastal Sage Scrub (DCSS)	0.0016	In	Out	Out
	Chocolate Access MH 273 to 267	Chamise Chaparral (CC)	0.0020	Ajacent	Out	Out
	Chocolate Canyon Emergency Access MH 245	Chamise Chaparral (CC)	0.0010	Ajacent	Out	Out
	Florida Canyon	Diegan Coastal Sage Scrub (DCSS)	0.0100	Ajacent	Out	Out
	Huckleberry (32nd & Beech)	Diegan Coastal Sage Scrub (DCSS)	0.0090	Ajacent	Out	Out
	Huckleberry (32nd & Beech)	Non-Native Grassland (NNG)	0.0230	Ajacent	Out	Out
	Huckleberry (32nd St Canyon Emergency Maintenance)	Non-Native Grassland (NNG)	0.0300	Ajacent	Out	Out
	Hwy 163 (7th and Brookes 2004 Emergency Maint)	Non-Native Grassland (NNG)	0.0350	Ajacent	Out	Out
	Hwy 163 Corridor (7th & Brookes 2002Emergency Repa	Non-Native Grassland (NNG)	0.0150	Ajacent	Out	Out
	Junipero Serra (Jackson/Mission Gorge Emergency)	Diegan Coastal Sage Scrub (DCSS)	0.0600	In	Out	Out
	Lake Murray Emergency Cleaning	Diegan Coastal Sage Scrub (DCSS)	0.4700	In	In	Out
	Lake Murray Emergency Cleaning	Diegan Coastal Sage Scrub (DCSS)	0.1700	In	In	Out
	Lake Murray Emergency Cleaning	Non-Native Grassland (NNG)	0.0700	In	In	Out



		Lake Murray Emergency Cleaning	Non-Native Grassland (NNG)	0.0300	In	In	Out
		Lake Murray Trunk Sewer and Permanent Access Path	Non-Native Grassland (NNG)	0.0400	In	In	Out
		Lake Murray Trunk Sewer and Permanent Access Path	Non-Native Grassland (NNG)	0.0100	In	In	Out
		Lake Murray Trunk Sewer and Permanent Access Path	Diegan Coastal Sage Scrub (DCSS)	2.5700	In	In	Out
		Lake Murray Trunk Sewer and Permanent Access Path	Diegan Coastal Sage Scrub (DCSS)	0.7500	In	In	Out
		Lake Murray Trunk Sewer and Permanent Access Path	Broom Baccharis Scrub (BBS)	0.0500	In	In	Out
		Lake Murray Trunk Sewer and Permanent Access Path	Broom Baccharis Scrub (BBS)	0.2800	In	In	Out
		Mission Valley Canyon Sewer Lateral Repair	Diegan Coastal Sage Scrub (DCSS)	0.0006	In	Out	Out
		Switzer MH 152 Access	Diegan Coastal Sage Scrub (DCSS)	0.0090	Ajacent	Out	Out

**Wetland 1.5329**

Wetland Enhancement	Southern Willow Scrub (SWS)	32nd Street - Huckleberry LT	Riparian Scrub (RS)	0.0070	Ajacent	Out	Out
		54th & Maisel	Freshwater Marsh (FM)	0.0080	In	Out	Out
		60th Street Pipe Relocation/Permanent Access	Disturbed Wetland (DWET)	0.0050	In	Out	Out
		Alvarado Court Emergency Sewer Repair	Freshwater Marsh (FM)	0.0800	In	Out	Out
		Alvarado Court Emergency Sewer Repair	Southern Willow Scrub (SWS)	0.0060	In	Out	Out
		Alvarado Court Emergency Sewer Repair	Southern Willow Scrub (SWS)	0.0100	In	Out	Out
		Alvarado Court Emergency Sewer Repair	Non-Vegetated Channel (NVC)	0.0300	In	Out	Out
		Chocolate Access MH 273 to 267	Emergent Wetland (EW)	0.0064	Ajacent	Out	Out
		Chocolate Canyon Emergency Access MH 245	Emergent Wetland (EW)	0.0030	Ajacent	Out	Out
		Chocolate Combined	Non-Vegetated Channel (NVC)	0.0080	Ajacent	Out	Out
		Huckleberry (32nd & Beech)	Non-Vegetated Channel (NVC)	0.0050	Ajacent	Out	Out
		Huckleberry (32nd & Beech)	Disturbed Wetland (DWET)	0.0070	Ajacent	Out	Out
		Hwy 163 Corridor (7th & Brookes 2002Emergency Repa	Non-Vegetated Channel (NVC)	0.0200	Ajacent	Out	Out
		Junipero Serra (Jackson/Mission Gorge Emergency)	Southern Willow Scrub (SWS)	0.0100	In	Out	Out
		Junipero Serra (Mission Gorge Emergency Repair)	Riparian Scrub (RS)	0.0300	In	Out	Out
		Junipero Serra (Superior Ready Mix Emergency Repai	Riparian Scrub (RS)	0.6000	In	Out	Out
		Junipero Serra (Superior Ready Mix Emergency Repai	Southern Cottonwood-Willow Riparian Forest (SCWRF)	0.1800	In	Out	Out
		Junipero Serra (Superior Ready Mix Emergency Repai	Non-Vegetated Channel (NVC)	0.0400	In	Out	Out
		Lake Murray Emergency Cleaning	Non-Vegetated Channel (NVC)	0.0100	In	In	Out
		Lake Murray Emergency Cleaning	Southern Willow Scrub (SWS)	0.0100	In	In	Out
		Lake Murray Trunk Sewer and Permanent Access Path	Southern Willow Scrub (SWS)	0.3000	In	In	Out

		Lake Murray Trunk Sewer and Permanent Access Path	Southern Willow Scrub (SWS)	0.0200	In	In	Out	
		Lake Murray Trunk Sewer and Permanent Access Path	Non-Vegetated Channel (NVC)	0.0100	In	In	Out	
		Lake Murray Trunk Sewer and Permanent Access Path	Freshwater Marsh (FM)	0.0700	In	In	Out	
		Lexington Pipe Encasement Emergency 2016	Non-Vegetated Channel (NVC)	0.0005	In	Out	Out	
		Mission Center Rd. (Kearny Mesa)	Southern Willow Scrub (SWS)	0.0070	In	Out	Out	
		Switzer Canyon Emergency Sewer Repair Project	Non-Vegetated Channel (NVC)	0.0500	Ajacent	Out	Out	
Los Penasquitos North 4.6260								
Upland				1.0250				
Upland Restoration	Diegan Coastal Sage Scrub (DCSS)	Los Penasquitos North Wetland Creation Project	Coastal Sage Scrub (CSS)	0.8200	In	In	In	
		Torreyana Sewer Repair	Diegan Coastal Sage Scrub (DCSS)	0.0600	In	Out	Out	
		Torreyana Sewer Repair	Diegan Coastal Sage Scrub (DCSS)	0.1300	In	Out	Out	
		Torreyana Sewer Repair	Southern Mixed Chaparral (SMC)	0.0150	In	Out	Out	
Wetland				3.6010				
Wetland Creation/Restoration	Freshwater Marsh (FM)	Black Mountain Road Finger Canyon	Freshwater Marsh (FM)	0.0060	In	In	Out	
		Carmel Valley Rd Emergency Water Break	Riparian Scrub (RS)	0.0260	In	Out	Out	
		Lopez Canyon LT MH 13 Access	Alkali Marsh (AM)	0.1000	In	Out	Out	
		Lopez MH 102 Emergency	Non-Vegetated Channel (NVC)	0.0030	In	Out	Out	
		Lower Rose Creek Emergency Maintenance	Southern Willow Scrub (SWS)	0.0300	In	Out	Out	
		Penasquitos Preserve LT	Freshwater Marsh (FM)	0.0450	In	In	Out	
		Penasquitos Preserve LT	Mule Fat Scrub (MFS)	0.0080	In	In	Out	
		Penasquitos View Emergency	Cismontane Alkali Marsh (CAM)	0.0020	In	Out	Out	
	Riparian Woodland (RW)	Carroll and Mesa Rim	Riparian Woodland (RW)	0.4300	In	Out	Out	
		Southern Willow Scrub (SWS)	Acuna LT	Southern Willow Scrub (SWS)	0.0100	In	Out	Out
			Carmel Valley Rd Emergency Water Break	Southern Willow Scrub (SWS)	0.0080	In	Out	Out
			Carroll and Mesa Rim	Mule Fat Scrub (MFS)	0.4400	In	Out	Out
			Carroll and Mesa Rim	Southern Willow Scrub (SWS)	0.1500	In	Out	Out
			Carroll and Mesa Rim	Southern Coast Live Oak Riparian Forest (SCLORF)	0.1000	In	Out	Out
			Carroll and Mesa Rim	Riparian Woodland (RW)	0.2900	In	Out	Out
			Lopez Canyon LT	Riparian Woodland (RW)	0.0100	In	Out	Out
			Lopez Canyon LT	Southern Willow Scrub (SWS)	0.0300	In	Out	Out
			Lopez Canyon Manhole 102 Maintenance	Non-Vegetated Channel (NVC)	0.0010	In	Out	Out
			Lopez Emergency Cleaning	Riparian Forest (RF)	0.0040	In	Out	Out



Lopez Emergency Cleaning	Southern Willow Scrub (SWS)	0.0800	In	Out	Out
Lopez Emergency Cleaning	Emergent Wetland (EW)	0.0010	In	Out	Out
Lopez Emergency Cleaning	Mule Fat Scrub (MFS)	0.0400	In	Out	Out
Lower Rose Creek Emergency Maintenance	Southern Willow Scrub (SWS)	0.7800	In	Out	Out
Manhole 477 Raise	Freshwater Marsh (FM)	0.0030	In	Out	Out
Park Mesa LT	Non-Vegetated Channel (NVC)	0.0060	In	Out	Out
Park Mesa LT	Southern Willow Scrub (SWS)	0.0050	In	Out	Out
Park Mesa LT	Southern Willow Scrub (SWS)	0.0300	In	Out	Out
Penasquitos Preserve (East of Black Mountain Road)	Southern Cottonwood-Willow Riparian Forest (SCWRF)	0.0900	In	In	Out
Penasquitos Preserve LT	Coast Live Oak Woodland (CLOW)	0.0060	In	In	Out
Penasquitos Preserve LT	Southern Coast Live Oak Riparian Forest (SCLORF)	0.0530	In	In	Out
Penasquitos Preserve LT	Southern Cottonwood-Willow Riparian Forest (SCWRF)	0.1200	In	In	Out
Penasquitos Views Trunk Sewer	Southern Willow Scrub (SWS)	0.1920	In	In	Out
Sorrento Valley Water Main Leak Emergency	Southern Willow Scrub (SWS)	0.0050	In	Out	Out
Sorrento Valley Water Main Leak Emergency	Freshwater Marsh (FM)	0.0010	In	Out	Out
Van Nuys Canyon MH # 91 Sewer Blockage	Mule Fat Scrub (MFS)	0.0700	In	Out	Out
Van Nuys Installation of 2 36-inch Pipe Culverts	Southern Willow Scrub (SWS)	0.0300	In	Out	Out
Van Nuys MH #92-76 Four Sewer Breaks (Upper Canyon	Mule Fat Scrub (MFS)	0.1460	In	Out	Out
Van Nuys MH #92-76 Four Sewer Breaks (Upper Canyon	Disturbed Wetland (DWET)	0.2500	In	Out	Out

#### Marron Valley Cornerstone Lands Conservation Bank 6.8030

		Upland		6.8030			
Upland Bank	Diegan Coastal Sage Scrub (DCSS)	45th & Boston	Non-Native Grassland (NNG)	0.0150	Out	Out	Out
		45th & Boston	Non-Native Grassland (NNG)	0.0550	Out	Out	Out
		54th & Maisel	Southern Mixed Chaparral (SMC)	0.0400	Out	Out	Out
		60th Street Pipe Relocation/Permanent Access	Non-Native Grassland (NNG)	0.0240	Out	Out	Out
		60th Street Pipe Relocation/Permanent Access	Diegan Coastal Sage Scrub (DCSS)	0.0950	Out	Out	Out
		Alvarado LT	Non-Native Grassland (NNG)	0.0090	Out	Out	Out
		Alvarado LT	Southern Mixed Chaparral (SMC)	0.0010	Out	Out	Out
		Alvarado LT	Diegan Coastal Sage Scrub (DCSS)	0.0090	Out	Out	Out

Alvarado LT	Diegan Coastal Sage Scrub (DCSS)	0.0360	Out	Out	Out
Alvarado LT	Diegan Coastal Sage Scrub (DCSS)	0.0030	Out	Out	Out
Alvarado LT	Chamise Chaparral (CC)	0.0850	Out	Out	Out
Balboa Terrace Trunk Sewer Replacement	Diegan Coastal Sage Scrub (DCSS)	0.0390	Out	Out	Out
Balboa Terrace Trunk Sewer Replacement	Diegan Coastal Sage Scrub (DCSS)	0.3150	Out	Out	Out
Buchanan	Southern Mixed Chaparral (SMC)	0.1200	Out	Out	Out
Buchanan	Diegan Coastal Sage Scrub (DCSS)	0.0400	Out	Out	Out
Buchanan	Poison Oak Scrub (POS)	0.1300	Out	Out	Out
Buchanan (10th & Johnson Ave. Emergency Repair)	Diegan Coastal Sage Scrub (DCSS)	0.0300	Out	Out	Out
Buchanan (10th & Johnson Ave. Emergency Repair)	Diegan Coastal Sage Scrub (DCSS)	0.0600	Out	Out	Out
Buchanan (10th & Johnson Ave. Emergency Repair)	Diegan Coastal Sage Scrub (DCSS)	0.0300	Out	Out	Out
Buchanan (10th & Johnson Ave. Emergency Repair)	Diegan Coastal Sage Scrub (DCSS)	0.0100	Out	Out	Out
Buchanan (Highway 163 & Lincoln Street Emergency)	Diegan Coastal Sage Scrub (DCSS)	0.0180	Out	Out	Out
Buchanan (Highway 163 & Lincoln Street Emergency)	Southern Mixed Chaparral (SMC)	0.0540	Out	Out	Out
Buchanan LT	Southern Mixed Chaparral (SMC)	0.0400	Out	Out	Out
Buchanan LT	Southern Mixed Chaparral (SMC)	0.0030	Out	Out	Out
Buchanan LT	Poison Oak Scrub (POS)	0.0200	Out	Out	Out
Buchanan LT	Poison Oak Scrub (POS)	0.0060	Out	Out	Out
Buchanan/Caminito Fuente	Diegan Coastal Sage Scrub (DCSS)	0.0200	Out	Out	Out
Dakota Canyon Replacement/Relocation/Access	Diegan Coastal Sage Scrub (DCSS)	0.5700	Out	Out	Out
Euclid & Menlo (47th & Thorn Sewer Maint & Emerg)	Diegan Coastal Sage Scrub (DCSS)	0.0100	Out	Out	Out
Euclid & Menlo (47th & Thorn Sewer Maint & Emerg)	Non-Native Grassland (NNG)	0.0500	Out	Out	Out
Home Ave TS LT (Ash St Canyon)	Diegan Coastal Sage Scrub (DCSS)	0.0870	Out	Out	Out
Hwy 163 North LT	Non-Native Grassland (NNG)	0.1900	Out	Out	Out
I-805 & 94 Canyon (40th & C Emergency Repair)	Non-Native Grassland (NNG)	0.0110	Out	Out	Out



I-805 & 94 Canyon (40th & C Emergency Repair)	Southern Mixed Chaparral (SMC)	0.0140	Out	Out	Out
I-805 & 94 Canyon (40th & C Emergency Repair)	Southern Mixed Chaparral (SMC)	0.0020	Out	Out	Out
Lexington (Central & Redwood Emergency)	Non-Native Grassland (NNG)	0.1400	Out	Out	Out
Lexington (Central & Redwood Emergency)	Southern Mixed Chaparral (SMC)	0.0020	Out	Out	Out
Lexington/Manzanita Pipe and MH Replacement Emer	Southern Mixed Chaparral (SMC)	0.0250	Out	Out	Out
Lexington/Manzanita Pipe and MH Replacement Emer	Southern Mixed Chaparral (SMC)	0.0250	Out	Out	Out
Lexington/Manzanita Pipe and MH Replacement Emer	Southern Mixed Chaparral (SMC)	0.0090	Out	Out	Out
Mission Center LT	Southern Mixed Chaparral (SMC)	0.0400	Out	Out	Out
Mission Center LT	Diegan Coastal Sage Scrub (DCSS)	0.1400	Out	Out	Out
Norfolk (Fairmont & Montezuma)	Southern Mixed Chaparral (SMC)	0.1060	Out	Out	Out
Norfolk (Fairmont & Montezuma)	Broom Baccharis Scrub (BBS)	0.0600	Out	Out	Out
Norfolk (Fairmont & Montezuma)	Diegan Coastal Sage Scrub (DCSS)	0.3980	Out	Out	Out
Norfolk (Fairmont & Montezuma)	Poison Oak Scrub (POS)	0.1510	Out	Out	Out
Norfolk Canyon Maintenance Project	Diegan Coastal Sage Scrub (DCSS)	0.3020	Out	Out	Out
Norfolk Canyon Maintenance Project	Southern Mixed Chaparral (SMC)	0.0020	Out	Out	Out
Norfolk LT	Southern Mixed Chaparral (SMC)	0.0200	Out	Out	Out
Otay Valley TS Pipe Protection	Non-Native Grassland (NNG)	0.0200	Ajacent	Out	Out
Pump Station 77 A/B Force Main Inspections	Non-Native Grassland (NNG)	0.0200	Out	Out	Out
Pump Station 77 A/B Force Main Inspections	Diegan Coastal Sage Scrub (DCSS)	0.3480	Out	Out	Out
Rancho Bernardo 15 East	Diegan Coastal Sage Scrub (DCSS)	0.3100	Out	Out	Out
Rancho Bernardo 15 East (Escala Emergency)	Diegan Coastal Sage Scrub (DCSS)	0.1000	Out	Out	Out
Rancho Mission LT	Diegan Coastal Sage Scrub (DCSS)	0.0060	Out	Out	Out
Shepherd	Diegan Coastal Sage Scrub (DCSS)	0.0100	Out	Out	Out
Shepherd LT	Non-Native Grassland (NNG)	0.0900	Out	Out	Out
South Chollas LTA	Diegan Coastal Sage Scrub (DCSS)	0.0470	Out	Out	Out

South Chollas LTA	Diegan Coastal Sage Scrub (DCSS)	0.3040	Out	Out	Out
South Chollas LTA	Diegan Coastal Sage Scrub (DCSS)	0.0120	Out	Out	Out
Stevenson	Diegan Coastal Sage Scrub (DCSS)	0.1200	Out	Out	Out
Stevenson	Diegan Coastal Sage Scrub (DCSS)	0.0200	Out	Out	Out
Stevenson	Poison Oak Scrub (POS)	0.0400	Out	Out	Out
Stevenson Canyon Manhole 138 Emergency	Diegan Coastal Sage Scrub (DCSS)	0.1800	Out	Out	Out
Stevenson Long Term Access Project	Diegan Coastal Sage Scrub (DCSS)	0.0060	Out	Out	Out
Stevenson Long Term Access Project	Diegan Coastal Sage Scrub (DCSS)	0.2100	Out	Out	Out
Stevenson Long Term Access Project	Diegan Coastal Sage Scrub (DCSS)	0.0640	Out	Out	Out
Trinidad & Euclid	Non-Native Grassland (NNG)	0.1300	Out	Out	Out
USIU	Southern Mixed Chaparral (SMC)	0.1000	Out	Out	Out
USIU	Southern Mixed Chaparral (SMC)	0.0500	Out	Out	Out
USIU	Southern Mixed Chaparral (SMC)	0.0050	Out	Out	Out
USIU	Non-Native Grassland (NNG)	0.1500	Out	Out	Out
USIU	Non-Native Grassland (NNG)	0.6000	Out	Out	Out
USIU	Diegan Coastal Sage Scrub (DCSS)	0.0700	Out	Out	Out
USIU	Diegan Coastal Sage Scrub (DCSS)	0.0500	Out	Out	Out
USIU	Broom Baccharis Scrub (BBS)	0.0200	Out	Out	Out
USIU	Broom Baccharis Scrub (BBS)	0.0600	Out	Out	Out

#### Otay Mesa Mitigation Bank 1.7280

		Upland	1.7280			
Upland Bank	Maritime Succulent Scrub (MSS)	15 West and Elanus	Diegan Coastal Sage Scrub (DCSS)	0.2000	Out	Out
		Acuna	Diegan Coastal Sage Scrub (DCSS)	0.0100	Out	Out
		Acuna	Southern Mixed Chaparral (SMC)	0.0700	Out	Out
		Bounty & Waring (Bounty & Spear Emergency Repair)	Diegan Coastal Sage Scrub (DCSS)	0.2000	Out	Out



		Elanus & Murray Canyons (I-15 & Clairemont Mesa Bl	Diegan Coastal Sage Scrub (DCSS)	0.0120	Out	Out	Out
		Elanus & Murray Canyons (I-15 & Clairemont Mesa Bl	Diegan Coastal Sage Scrub (DCSS)	0.1100	Out	Out	Out
		Euclid & Menlo (47th & Thorn Sewer Maint & Emerg)	Southern Maritime Chaparral (SMRC)	0.0500	Out	Out	Out
		Euclid & Menlo Canyon (47th & Thorn Emergency Repa	Southern Mixed Chaparral (SMC)	0.0100	Out	Out	Out
		Euclid & Menlo Canyon (47th & Thorn Emergency Repa	Non-Native Grassland (NNG)	0.0100	Out	Out	Out
		Fairmont & Home	Non-Native Grassland (NNG)	0.2500	Out	Out	Out
		Fairmont & Home	Southern Maritime Chaparral (SMRC)	0.1100	Out	Out	Out
		Hopkins	Non-Native Grassland (NNG)	0.1400	In	Out	Out
		Hopkins (Calle Abajo Emergency)	Non-Native Grassland (NNG)	0.0900	In	Out	Out
		Hwy 163 North LT	Coast Live Oak Woodland (CLOW)	0.0400	Out	Out	Out
		Isla Vista Emergency Response Project	Diegan Coastal Sage Scrub (DCSS)	0.0600	Out	Out	Out
		Norfolk (Fairmont & Montezuma)	Scrub Oak Chaparral (SOC)	0.0460	Out	Out	Out
		Rancho Bernardo 15 East	Diegan Coastal Sage Scrub (DCSS)	0.3100	Out	Out	Out
		South Juniper Emergency Project	Diegan Coastal Sage Scrub (DCSS)	0.0010	Out	Out	Out
		Switzer MH 152 Access	Scrub Oak Chaparral (SOC)	0.0090	Out	Out	Out

#### Penasquitos Eucalyptus Removal 0.3100

		<b>Wetland</b>		<b>0.3100</b>			
Wetland Creation/Restoration	Riparian Forest (RF)	Carroll and Mesa Rim	Riparian Woodland (RW)	0.3100	In	Out	Out

#### Rancho Mission Enhancement 2.1322

		<b>Wetland</b>		<b>2.1322</b>			
Wetland Enhancement	Southern Willow Scrub (SWS)	15 West and Elanus	Southern Willow Scrub (SWS)	0.0500	In	Out	Out
		Alvarado Court Sewer Crossing	Southern Willow Scrub (SWS)	0.0050	In	Out	Out
		Alvarado LT	Southern Willow Scrub (SWS)	0.0010	In	Out	Out
		Alvarado LT	Southern Willow Scrub (SWS)	0.0250	In	Out	Out
		Alvarado LT	Mule Fat Scrub (MFS)	0.0020	In	Out	Out
		Alvarado LT	Freshwater Marsh (FM)	0.0060	In	Out	Out
		Alvarado Trunk Sewer	Disturbed Wetland (DWET)	0.0220	In	Out	Out
		Barr Avenue (Hotel Circle) part of Dove Canyon	Non-Vegetated Channel (NVC)	0.0100	In	Out	Out

Bay View Emergency Response Project	Non-Vegetated Channel (NVC)	0.0130	Ajacent	Out	Out
Buchanan	Southern Willow Scrub (SWS)	0.0108	In	Out	Out
Buchanan	Disturbed Wetland (DWET)	0.3220	In	Out	Out
Buchanan B	Non-Vegetated Channel (NVC)	0.0200	In	Out	Out
Buchanan LT	Non-Vegetated Channel (NVC)	0.6240	In	Out	Out
Buchanan LT	Disturbed Wetland (DWET)	0.0600	In	Out	Out
Buchanan Sewer Blockage Emergency	Southern Willow Scrub (SWS)	0.0030	In	Out	Out
Buchanan Sewer Blockage Emergency	Southern Willow Scrub (SWS)	0.0080	In	Out	Out
Chollas Dam Vegetation Removal	Freshwater Marsh (FM)	0.0220	Ajacent	Out	Out
Chollas Exposed Water Main Repair	Riparian Scrub (RS)	0.0140	Ajacent	Out	Out
Delevan & I-15 Emerg Repair (South Juniper Canyon)	Non-Vegetated Channel (NVC)	0.0300	Ajacent	Out	Out
Elanus & Murray Canyons (I-15 & Clairemont Mesa Bl	Southern Willow Scrub (SWS)	0.0070	In	Out	Out
Elanus (I-15 & Clairemont Mesa Blvd) LT	Emergent Wetland (EW)	0.0050	In	Out	Out
Euclid & Menlo (47th & Thorn Sewer Maint & Emerg)	Non-Vegetated Channel (NVC)	0.0100	Ajacent	Out	Out
Euclid & Menlo (47th & Thorn Sewer Maint & Emerg)	Disturbed Wetland (DWET)	0.0800	Ajacent	Out	Out
Euclid & Menlo Canyon (47th & Thorn Emergency Repa	Non-Vegetated Channel (NVC)	0.0011	Ajacent	Out	Out
Euclid and Menlo Emerg Pipe Protection	Non-Vegetated Channel (NVC)	0.0050	Ajacent	Out	Out
Federal & Chollas	Disturbed Wetland (DWET)	0.0008	Ajacent	Out	Out
Fox Canyon (University & 49th) Emergency Repair	Non-Vegetated Channel (NVC)	0.0020	Ajacent	Out	Out
Hopkins	Disturbed Wetland (DWET)	0.0200	Out	Out	Out
Hopkins (Calle Abajo Emergency)	Non-Vegetated Channel (NVC)	0.0020	Out	Out	Out
Huckleberry (32nd St Canyon Emergency Maintenance)	Disturbed Wetland (DWET)	0.0400	Ajacent	Out	Out
Hwy 163 Corridor (7th & Brookes 2002Emergency Repa	Non-Vegetated Channel (NVC)	0.0200	Ajacent	Out	Out
Hwy 163 North LT	Non-Vegetated Channel (NVC)	0.0010	Ajacent	Out	Out
I-15 & Adams	Non-Vegetated Channel (NVC)	0.0500	In	Out	Out
I-15 & Adams	Non-Vegetated Channel (NVC)	0.0200	In	Out	Out
I-15 & Adams	Emergent Wetland (EW)	0.0040	In	Out	Out
I-805 & 94 Canyon (40th & C Emergency Repair)	Non-Vegetated Channel (NVC)	0.0013	Ajacent	Out	Out
Isla Vista Emergency Response Project	Non-Vegetated Channel (NVC)	0.0030	Ajacent	Out	Out
Lexington/Manzanita Pipe and MH Replacement Emer	Non-Vegetated Channel (NVC)	0.0160	Ajacent	Out	Out
Lexington/Manzanita Pipe Encasement Emergency	Non-Vegetated Channel (NVC)	0.0001	Ajacent	Out	Out
Lexington/Manzanita Pipe Encasement Emergency	Non-Vegetated Channel (NVC)	0.0050	Ajacent	Out	Out
Market & Euclid (MH 88 Repair at Encanto Creek)	Southern Willow Scrub (SWS)	0.0030	Ajacent	Out	Out
Mission Center Canyon B	Emergent Wetland (EW)	0.0200	In	Out	Out



Mission Center Canyon B	Riparian Scrub (RS)	0.0250	In	Out	Out
Mission Center Canyon B	Disturbed Wetland (DWET)	0.0140	In	Out	Out
Mission Center Canyon Emergency Sewer Repair	Disturbed Wetland (DWET)	0.0010	In	Out	Out
Mission Center Canyon Emergency Sewer Repair	Disturbed Wetland (DWET)	0.0050	In	Out	Out
Mission Center Canyon Emergency Sewer Repair	Freshwater Marsh (FM)	0.0160	In	Out	Out
Mission Center Canyon Emergency Sewer Repair	Freshwater Marsh (FM)	0.0070	In	Out	Out
Mission Center Canyon Emergency Sewer Repair	Non-Vegetated Channel (NVC)	0.0020	In	Out	Out
Mission Center Canyon Emergency Sewer Repair	Non-Vegetated Channel (NVC)	0.0120	In	Out	Out
Mission Center Canyon Emergency Sewer Repair	Southern Willow Scrub (SWS)	0.0030	In	Out	Out
Mission Center Canyon Emergency Sewer Repair	Southern Willow Scrub (SWS)	0.0010	In	Out	Out
Murphy Canyon MH114 Locate and Raise	Southern Willow Scrub (SWS)	0.0140	In	Out	Out
Murphy Canyon TS Access and Repair	Freshwater Marsh (FM)	0.0340	In	Out	Out
Norfolk (Fairmont & Montezuma)	Southern Willow Scrub (SWS)	0.0030	In	Out	Out
Norfolk (Fairmont & Montezuma)	Non-Vegetated Channel (NVC)	0.0420	In	Out	Out
Norfolk Canyon Maintenance Project	Non-Vegetated Channel (NVC)	0.0020	In	Out	Out
Presidio (Palm Cyn) GJ665	Non-Vegetated Channel (NVC)	0.0120	In	Out	Out
Presidio (Palm Cyn) GJ665	Non-Vegetated Channel (NVC)	0.0017	In	Out	Out
Presidio (Palm Cyn) GJ665	Riparian Scrub (RS)	0.1650	In	Out	Out
Rancho Mission (Mission Gorge Canyon, Conestoga Co	Non-Vegetated Channel (NVC)	0.0080	In	Out	Out
Rancho Mission (Mission Gorge Canyon, Conestoga Co	Disturbed Wetland (DWET)	0.0050	In	Out	Out
Rancho Mission LT	Southern Willow Scrub (SWS)	0.0070	In	Out	Out
San Diego Mission Rd Emergency	Southern Willow Scrub (SWS)	0.0100	In	Out	Out
San Diego Mission Rd Emergency	Freshwater Marsh (FM)	0.0100	In	Out	Out
Shepherd	Southern Willow Scrub (SWS)	0.0100	In	Out	Out
Shepherd LT	Non-Vegetated Channel (NVC)	0.0300	In	Out	Out
Shepherd LT	Riparian Scrub (RS)	0.0200	In	Out	Out
Shepherd LT	Riparian Woodland (RW)	0.0600	In	Out	Out
Shepherd LT	Disturbed Wetland (DWET)	0.0150	In	Out	Out
South Juniper Emergency Project	Non-Vegetated Channel (NVC)	0.0200	Ajacent	Out	Out
Valencia Canyon Emergency Repair & Maintenance	Non-Vegetated Channel (NVC)	0.0014	Ajacent	Out	Out
Valencia Canyon Emergency Repair & Maintenance	Mule Fat Scrub (MFS)	0.0040	Ajacent	Out	Out
Willow St. Canyon	Non-Vegetated Channel (NVC)	0.0040	Ajacent	Out	Out
Woodman Canyon Emergency Sewer Access and Repair	Non-Vegetated Channel (NVC)	0.0040	Ajacent	Out	Out

#### Rose Canyon Wetland and Upland 6.3108

		Upland		2.5650			
Upland Restoration	Coastal Sage Scrub (CSS)	I-5/SR-52 Maintenance Project	Diegan Coastal Sage Scrub (DCSS)	0.0200	In	In	Out
		I-5/SR-52 Maintenance Project	Non-Native Grassland (NNG)	0.0100	In	In	Out
		Middle Rose Creek (ER Repair -Rose W of Genesee )	Non-Native Grassland (NNG)	0.0400	In	In	Out
		Middle Rose Creek (ER Repair -Rose W of Genesee )	Diegan Coastal Sage Scrub (DCSS)	0.0600	In	In	Out
		Miramar Trunk Sewer Replacement Project	Diegan Coastal Sage Scrub (DCSS)	0.1480	In	Out	Out
		Miramar Trunk Sewer Replacement Project	Broom Baccharis Scrub (BBS)	0.3390	In	Out	Out
		Miramar Trunk Sewer Replacement Project	Broom Baccharis Scrub (BBS)	0.5920	In	Out	Out
		Miramar Trunk Sewer Replacement Project	Diegan Coastal Sage Scrub (DCSS)	0.0060	In	Out	Out
		Miramar Trunk Sewer Replacement Project	Non-Native Grassland (NNG)	0.0825	In	Out	Out
		Miramar Trunk Sewer Replacement Project	Non-Native Grassland (NNG)	0.0120	In	Out	Out
		Miramar Trunk Sewer Replacement Project	Southern Mixed Chaparral (SMC)	0.0010	In	Out	Out
		Miramar Trunk Sewer Replacement Project	Poison Oak Scrub (POS)	0.0760	In	Out	Out
		Miramar Trunk Sewer Replacement Project	Poison Oak Scrub (POS)	0.0065	In	Out	Out
		Old Rose Canyon Sewer Relocation Project	Non-Native Grassland (NNG)	0.0450	In	Out	Out
		Penasquitos Bluffs (Finger Canyon Emergency)	Scrub Oak Chaparral (SOC)	0.1400	In	Out	Out
		Penasquitos Bluffs (Finger Canyon Emergency)	Scrub Oak Chaparral (SOC)	0.1600	In	Out	Out
		Penasquitos View Emergency	Diegan Coastal Sage Scrub (DCSS)	0.0100	In	Out	Out
		Rose Canyon ER Repairs between 9/01 and 5/03	Broom Baccharis Scrub (BBS)	0.0300	In	In	Out
		Rose Canyon ER Repairs between 9/01 and 5/03	Diegan Coastal Sage Scrub (DCSS)	0.1300	In	In	Out
		Rose Canyon ER Repairs between 9/01 and 5/03	Non-Native Grassland (NNG)	0.2000	In	In	Out
		Rose Canyon ER Repairs between 9/01 and 5/03	Poison Oak Scrub (POS)	0.0500	In	In	Out
		Rose Canyon TS Joint Repair CIP	Diegan Coastal Sage Scrub (DCSS)	0.3000	In	In	Out
		Stevenson Canyon Emergency Sewer Pipe Protection Project	Diegan Coastal Sage Scrub (DCSS)	0.0200	In	Out	Out
	Native Grassland (NG)	Miramar Trunk Sewer Replacement Project	Coast Live Oak Woodland (CLOW)	0.0120	In	Out	Out
		Miramar Trunk Sewer Replacement Project	Coast Live Oak Woodland (CLOW)	0.0070	In	Out	Out
		Miramar Trunk Sewer Replacement Project	Native Grassland (NG)	0.0380	In	Out	Out
		Miramar Trunk Sewer Replacement Project	Scrub Oak Chaparral (SOC)	0.0100	In	Out	Out

		Penasquitos Bluffs (Finger Canyon Emergency)	Valley Needlegrass Grassland (VNG)	0.0200	In	Out	Out
			<b>Wetland</b>	<b>3.7458</b>			
Wetland Creation/Restoration	Riparian Forest (RF)	Dakota Canyon Manhole Repairs - Emergency	Waters of the U.S.	0.0001	In	Out	Out
		Dakota Canyon Manhole Repairs - Emergency	Waters of the U.S.	0.0005	In	Out	Out
		I-5/SR-52 Maintenance Project	Southern Willow Scrub (SWS)	0.0300	In	In	Out
		Lower Rose Canyon Emergency Repairs (MH 15)	Mule Fat Scrub (MFS)	0.1100	In	Out	Out
		Lower Rose Canyon Emergency Repairs (MH 15)	Southern Willow Scrub (SWS)	0.3200	In	Out	Out
		Lower Rose Canyon Emergency Repairs (MH 15)	Emergent Wetland (EW)	0.0050	In	Out	Out
		Lower Rose Canyon Emergency Repairs (MH 15)	Coastal and Valley Freshwater Marsh (CVFM)	0.2100	In	Out	Out
		Middle Rose Cyn MH 160 Emergency	Southern Willow Scrub (SWS)	0.0200	In	In	Out
		Middle Rose Cyn MH 160 Emergency	Non-Vegetated Channel (NVC)	0.0200	In	In	Out
		Miramar Trunk Sewer Replacement Project	Southern Willow Scrub (SWS)	0.0090	In	Out	Out
		Miramar Trunk Sewer Replacement Project	Southern Willow Scrub (SWS)	0.0490	In	Out	Out
		Miramar Trunk Sewer Replacement Project	Southern Willow Scrub (SWS)	0.0490	In	Out	Out
		Miramar Trunk Sewer Replacement Project	Southern Willow Scrub (SWS)	0.0540	In	Out	Out
		Miramar Trunk Sewer Replacement Project	Southern Willow Scrub (SWS)	0.0540	In	Out	Out
		Miramar Trunk Sewer Replacement Project	Southern Willow Scrub (SWS)	0.0320	In	Out	Out
		Miramar Trunk Sewer Replacement Project	Riparian Woodland (RW)	0.0440	In	Out	Out
		Miramar Trunk Sewer Replacement Project	Riparian Woodland (RW)	0.1530	In	Out	Out
		Miramar Trunk Sewer Replacement Project	Riparian Woodland (RW)	0.0270	In	Out	Out
		Miramar Trunk Sewer Replacement Project	Riparian Woodland (RW)	0.0060	In	Out	Out
		Miramar Trunk Sewer Replacement Project	Riparian Woodland (RW)	0.1200	In	Out	Out
		Miramar Trunk Sewer Replacement Project	Riparian Woodland (RW)	0.1700	In	Out	Out
		Miramar Trunk Sewer Replacement Project	Southern Willow Scrub (SWS)	0.0480	In	Out	Out
		Miramar Trunk Sewer Replacement Project	Southern Willow Scrub (SWS)	0.0240	In	Out	Out
		Miramar Trunk Sewer Replacement Project	Mule Fat Scrub (MFS)	0.2620	In	Out	Out
		Miramar Trunk Sewer Replacement Project	Mule Fat Scrub (MFS)	0.0440	In	Out	Out
		Miramar Trunk Sewer Replacement Project	Southern Coast Live Oak Riparian Forest (SCLORF)	0.1050	In	Out	Out
		Miramar Trunk Sewer Replacement Project	Southern Coast Live Oak Riparian Forest (SCLORF)	0.0660	In	Out	Out
		Miramar Trunk Sewer Replacement Project	Mule Fat Scrub (MFS)	0.4120	In	Out	Out
		Miramar Trunk Sewer Replacement Project	Mule Fat Scrub (MFS)	0.2260	In	Out	Out
		Miramar Trunk Sewer Replacement Project	Mule Fat Scrub (MFS)	0.0550	In	Out	Out



		Miramar Trunk Sewer Replacement Project	Mule Fat Scrub (MFS)	0.0050	In	Out	Out
		Miramar Trunk Sewer Replacement Project	Mule Fat Scrub (MFS)	0.0030	In	Out	Out
		Miramar Trunk Sewer Replacement Project	Herbaceous Wetland (HW)	0.1580	In	Out	Out
		Monte Verde Sewer Improvements	Southern Riparian Forest (SRF)	0.0200	In	In	Out
		Monte Verde Sewer Improvements	Southern Riparian Forest (SRF)	0.0200	In	In	Out
		Nobel Drive MH97 Emergency	Mule Fat Scrub (MFS)	0.0047	In	Out	Out
		Old Rose Canyon Sewer Relocation Project	Freshwater Marsh (FM)	0.0020	In	Out	Out
		Old Rose Canyon Sewer Relocation Project	Mule Fat Scrub (MFS)	0.0070	In	Out	Out
		Old Rose Canyon Sewer Relocation Project	Southern Willow Scrub (SWS)	0.0400	In	Out	Out
		Rose Canyon ER Repairs between 9/01 and 5/03	Mule Fat Scrub (MFS)	0.0300	In	In	Out
		Rose Canyon ER Repairs between 9/01 and 5/03	Southern Willow Scrub (SWS)	0.0300	In	In	Out
		Rose Canyon ER Repairs between 9/01 and 5/03	Riparian Woodland (RW)	0.0200	In	In	Out
		Rose Canyon ER Repairs between 9/01 and 5/03	Non-Vegetated Channel (NVC)	0.0018	In	In	Out
		Rose Creek East of I-805 (Miramar Rd & Commerce Av) Emergency	Non-Vegetated Channel (NVC)	0.1200	In	Out	Out
		Rose Creek Emergency Bypass Project	Non-Vegetated Channel (NVC)	0.0050	In	In	Out
		Stevenson Canyon Emergency Sewer Pipe Protection Project	Mule Fat Scrub (MFS)	0.0015	In	Out	Out
Wetland Enhancement	Riparian Forest (RF)	Lower Rose Canyon Emergency Repairs (MH 15)	Mule Fat Scrub (MFS)	0.1100	In	Out	Out
		Lower Rose Canyon Emergency Repairs (MH 15)	Coastal and Valley Freshwater Marsh (CVFM)	0.2100	In	Out	Out
		Lower Rose Canyon Emergency Repairs (MH 15)	Emergent Wetland (EW)	0.0050	In	Out	Out
		Miramar Trunk Sewer Replacement Project	Mule Fat Scrub (MFS)	0.0050	In	Out	Out
		Miramar Trunk Sewer Replacement Project	Mule Fat Scrub (MFS)	0.0030	In	Out	Out
		Miramar Trunk Sewer Replacement Project	Riparian Woodland (RW)	0.0850	In	Out	Out
		Miramar Trunk Sewer Replacement Project	Riparian Woodland (RW)	0.0880	In	Out	Out
		Miramar Trunk Sewer Replacement Project	Southern Willow Scrub (SWS)	0.0320	In	Out	Out
		Miramar Trunk Sewer Replacement Project	Southern Willow Scrub (SWS)	0.0090	In	Out	Out
		Nobel Drive MH97 Emergency	Mule Fat Scrub (MFS)	0.0047	In	Out	Out
		Stevenson Canyon Emergency Sewer Pipe Protection Project	Mule Fat Scrub (MFS)	0.0015	In	Out	Out
		San Clemente Wetland and Upland 3.7445					
			Upland	1.7445			
Upland Restoration	Coast Live Oak Woodland (CLOW)	San Clemente Canyon Access Path LT Project	Coast Live Oak Woodland (CLOW)	0.1500	In	In	Out

Coastal Sage Scrub (CSS)		San Clemente Canyon Access Path LT Project	Coast Live Oak Woodland (CLOW)	0.0390	In	In	Out
		Gesner LT	Diegan Coastal Sage Scrub (DCSS)	0.1000	In	Out	Out
		Gesner/Huron	Non-Native Grassland (NNG)	0.0100	In	Out	Out
		Penasquitos Bluffs (Finger Canyon Emergency)	Non-Native Grassland (NNG)	0.0300	In	Out	Out
		Penasquitos Bluffs (Finger Canyon Emergency)	Diegan Coastal Sage Scrub (DCSS)	0.2700	In	Out	Out
		Penasquitos Bluffs (Finger Canyon Emergency)	Diegan Coastal Sage Scrub (DCSS)	0.0200	In	Out	Out
		Penasquitos Bluffs (Finger Canyon Emergency)	Chamise Chaparral (CC)	0.0200	In	Out	Out
		Penasquitos Bluffs (Finger Canyon Emergency)	Diegan Coastal Sage Scrub (DCSS)	0.4200	In	Out	Out
		San Clemente (Emergency Repairs Combined)	Diegan Coastal Sage Scrub (DCSS)	0.0510	In	In	Out
		San Clemente (Emergency Repairs Combined)	Non-Native Grassland (NNG)	0.0050	In	In	Out
		San Clemente Canyon Access Path LT Project	Diegan Coastal Sage Scrub (DCSS)	0.0190	In	In	Out
		San Clemente Canyon Access Path LT Project	Diegan Coastal Sage Scrub (DCSS)	0.0260	In	In	Out
		San Clemente Canyon Biltmore Pipe Protection Emergency	Diegan Coastal Sage Scrub (DCSS)	0.0100	In	In	Out
		San Clemente Canyon Biltmore Pipe Protection Emergency	Southern Mixed Chaparral (SMC)	0.0100	In	In	Out
		San Clemente Canyon Biltmore Pipe Protection Emergency	Non-Native Grassland (NNG)	0.0510	In	In	Out
		San Clemente LT MH #4	Non-Native Grassland (NNG)	0.0580	In	In	Out
		San Clemente LT MH #4	Poison Oak Scrub (POS)	0.0180	In	In	Out
		Wet Weather Stream Discharge	Southern Mixed Chaparral (SMC)	0.0375	In	Out	Out
		Wet Weather Stream Discharge	Southern Mixed Chaparral (SMC)	0.0200	In	Out	Out
		Wet Weather Stream Discharge	Diegan Coastal Sage Scrub (DCSS)	0.1950	In	Out	Out
		Wet Weather Stream Discharge	Diegan Coastal Sage Scrub (DCSS)	0.1850	In	Out	Out

**Wetland 2.0000**

Wetland Creation/Restoration	Riparian Forest (RF)	Balboa Terrace Trunk Sewer Replacement	Disturbed Wetland (DWET)	0.0680	In	Out	Out
		Balboa Terrace Trunk Sewer Replacement	Disturbed Wetland (DWET)	0.1070	In	Out	Out
		Balboa Terrace Trunk Sewer Replacement	Freshwater Marsh (FM)	0.0240	In	Out	Out
		Balboa Terrace Trunk Sewer Replacement	Freshwater Marsh (FM)	0.0160	In	Out	Out
		Balboa Terrace Trunk Sewer Replacement	Mule Fat Scrub (MFS)	0.0220	In	Out	Out

	Balboa Terrace Trunk Sewer Replacement	Oak Riparian Forest (ORF)	0.0030	In	Out	Out
	Balboa Terrace Trunk Sewer Replacement	Southern Willow Scrub (SWS)	0.0640	In	Out	Out
	Balboa Terrace Trunk Sewer Replacement	Non-Vegetated Channel (NVC)	0.0140	In	Out	Out
	Carroll Canyon Emergency Sewer Repair	Non-Vegetated Channel (NVC)	0.0100	In	Out	Out
	Carroll Canyon Emergency Sewer Repair	Southern Arroyo Willow Riparian Forest (SAWRF)	0.0300	In	Out	Out
	Dakota Canyon Replacement/Relocation/Access	Non-Vegetated Channel (NVC)	0.0300	In	Out	Out
	East Tecolote Canyon Pipe Encasemt Protection Proj	Open Water (OW)	0.0230	In	Out	Out
	East Tecolote Canyon Pipe Encasemt Protection Project	Southern Willow Scrub (SWS)	0.0360	In	Out	Out
	East Tecolote Canyon Pipe Encasemt Protection Project	Southern Riparian Forest (SRF)	0.0300	In	Out	Out
	Penasquitos Bluffs LT	Southern Willow Scrub (SWS)	0.0030	In	Out	Out
	Penasquitos Bluffs LT	Southern Willow Scrub (SWS)	0.0070	In	Out	Out
	Penasquitos Bluffs LT	Freshwater Marsh (FM)	0.0140	In	Out	Out
	Penasquitos Bluffs LT	Alkali Marsh (AM)	0.0040	In	Out	Out
	Penasquitos Bluffs LT	Alkali Marsh (AM)	0.0100	In	Out	Out
	San Clemente Canyon Access Path LT Project	Southern Cottonwood-Willow Riparian Forest (SCWRF)	0.1330	In	Out	Out
	San Clemente Canyon Access Path LT Project	Southern Cottonwood-Willow Riparian Forest (SCWRF)	0.5520	In	In	Out
	San Clemente Canyon Access Path LT Project	Southern Coast Live Oak Riparian Forest (SCLORF)	0.3200	In	In	Out
	San Clemente Canyon Biltmore Pipe Protection Emergency	Southern Coast Live Oak Riparian Forest (SCLORF)	0.1170	In	In	Out
	San Clemente Canyon Biltmore Pipe Protection Emergency	Non-Vegetated Channel (NVC)	0.0040	In	Out	Out
	San Clemente Canyon Mitigation Project	Southern Coast Live Oak Riparian Forest (SCLORF)	0.0030	In	In	In
	San Clemente Emergency Sewer Encasement Repair	Southern Coast Live Oak Riparian Forest (SCLORF)	0.0200	In	Out	Out
	San Clemente Emergency Sewer Encasement Repair	Non-Vegetated Channel (NVC)	0.0100	In	Out	Out
	Soledad Valley Water Line Break	Alkali Marsh (AM)	0.2000	In	Out	Out
	Stevenson Long Term Access Project	Southern Willow Scrub (SWS)	0.0280	In	Out	Out
	Stevenson Long Term Access Project	Mule Fat Scrub (MFS)	0.0850	In	Out	Out
Streambed (STREAMBED)	Wet Weather Stream Discharge	Non-Vegetated Channel (NVC)	0.0020	In	Out	Out
	Wet Weather Stream Discharge	Non-Vegetated Channel (NVC)	0.0110	In	Out	Out
Tecolote - Tree of Heaven removal 0.2500						
			<b>Wetland</b>	<b>0.2500</b>		



Wetland Enhancement	Riparian Forest (RF)	Tecolote	Southern Coast Live Oak Riparian Forest (SCLORF)	0.2500	In	In	Out
Tecolote Canyon Wetland and Upland 4.5668							
Upland				3.3558			
Upland Restoration	Coastal Sage Scrub (CSS)	Central Tecolote Sewer Break Emergency	Diegan Coastal Sage Scrub (DCSS)	0.1180	In	In	Out
		Central Tecolote Sewer Break Emergency	Diegan Coastal Sage Scrub (DCSS)	0.0420	In	In	Out
		Central Tecolote Sewer Break Emergency	Diegan Coastal Sage Scrub (DCSS)	0.0100	In	In	Out
		Central Tecolote Sewer Break Emergency	Poison Oak Scrub (POS)	0.0120	In	In	Out
		Central Tecolote Sewer Break Emergency	Poison Oak Scrub (POS)	0.0160	In	In	Out
		East Tecolote (East Clairemont)	Diegan Coastal Sage Scrub (DCSS)	0.0120	In	Out	Out
		East Tecolote (East Clairemont) LT	Diegan Coastal Sage Scrub (DCSS)	0.0020	In	Out	Out
		East Tecolote (East Clairemont) LT	Poison Oak Scrub (POS)	0.0030	In	Out	Out
		East Tecolote (East Clairemont) LT	Poison Oak Scrub (POS)	0.0120	In	Out	Out
		East Tecolote Emergency MH 218	Diegan Coastal Sage Scrub (DCSS)	0.0270	In	Out	Out
		East Tecolote Manholes 223 and 224 Emergency	Diegan Coastal Sage Scrub (DCSS)	0.0090	In	Out	Out
		Manning Canyon Sewer Repair	Diegan Coastal Sage Scrub (DCSS)	0.0020	In	Out	Out
		Manning Street Sewer Repair	Diegan Coastal Sage Scrub (DCSS)	0.9000	In	Out	Out
		Manning Street Sewer Repair	Diegan Coastal Sage Scrub (DCSS)	0.1000	In	Out	Out
		Manning Street Sewer Repair	Non-Native Grassland (NNG)	0.1000	In	Out	Out
		Park Mesa LT	Non-Native Grassland (NNG)	0.0040	In	Out	Out
		Park Mesa LT	Non-Native Grassland (NNG)	0.0050	In	Out	Out
		Park Mesa LT	Southern Mixed Chaparral (SMC)	0.0150	In	Out	Out
		Park Mesa LT	Diegan Coastal Sage Scrub (DCSS)	0.1080	In	Out	Out
		Park Mesa Way	Broom Baccharis Scrub (BBS)	0.0400	In	Out	Out
		Stevenson Canyon MH 257 Emergency	Diegan Coastal Sage Scrub (DCSS)	0.0048	In	Out	Out
		Tecolote	Diegan Coastal Sage Scrub (DCSS)	0.0700	In	In	Out
		Tecolote	Poison Oak Scrub (POS)	0.0300	In	In	Out

		Tecolote (including Mt. Elbrus)	Diegan Coastal Sage Scrub (DCSS)	0.2300	In	In	Out
		Tecolote (including Mt. Elbrus)	Diegan Coastal Sage Scrub (DCSS)	0.0200	In	In	Out
		Tecolote (including Mt. Elbrus)	Non-Native Grassland (NNG)	0.0500	In	In	Out
		Tecolote (Mt. Elbrus) LTA	Diegan Coastal Sage Scrub (DCSS)	0.0100	In	In	Out
		Tecolote 8 inch CI Sewer Main Replacement	Diegan Coastal Sage Scrub (DCSS)	0.0500	In	In	Out
		Tecolote 8 inch CI Sewer Main Replacement	Non-Native Grassland (NNG)	0.1100	In	In	Out
		Tecolote Canyon Mitigation Project	Poison Oak Scrub (POS)	0.6500	In	In	In
		Tecolote Emergency Pipe Repair (Crossing)	Diegan Coastal Sage Scrub (DCSS)	0.0040	In	In	Out
		Tecolote LT	Diegan Coastal Sage Scrub (DCSS)	0.4000	In	In	Out
		Tecolote Pipe Repair Near Manhole 346	Diegan Coastal Sage Scrub (DCSS)	0.0240	In	In	Out
		Tecolote Pipe Repair Near Manhole 346	Non-Native Grassland (NNG)	0.1100	In	In	Out
	Native Grassland (NG)	East Tecolote (East Clairemont) LT	Scrub Oak Chaparral (SOC)	0.0160	In	Out	Out
		East Tecolote (East Clairemont) LT	Scrub Oak Chaparral (SOC)	0.0220	In	Out	Out
		East Tecolote Manholes 223 and 224 Emergency	Coast Live Oak Woodland (CLOW)	0.0180	In	Out	Out

Wetland				1.2110			
Wetland Creation/Restoration	Riparian Forest (RF)	Central Tecolote Sewer Break Emergency	Southern Riparian Forest (SRF)	0.1110	In	In	Out
		East Tecolote (East Clairemont)	Southern Coast Live Oak Riparian Forest (SCLORF)	0.0040	In	Out	Out
		East Tecolote (East Clairemont)	Southern Willow Scrub (SWS)	0.0001	In	Out	Out
		East Tecolote (East Clairemont) LT	Southern Riparian Forest (SRF)	0.0040	In	Out	Out
		East Tecolote (East Clairemont) LT	Southern Riparian Forest (SRF)	0.0270	In	Out	Out
		East Tecolote (East Clairemont) LT	Southern Riparian Forest (SRF)	0.0610	In	Out	Out
		East Tecolote (East Clairemont) LT	Freshwater Marsh (FM)	0.0020	In	Out	Out
		East Tecolote (East Clairemont) LT	Freshwater Marsh (FM)	0.0080	In	Out	Out
		East Tecolote (East Clairemont) LT	Freshwater Marsh (FM)	0.0010	In	Out	Out
		East Tecolote (East Clairemont) LT	Non-Vegetated Channel (NVC)	0.0060	In	Out	Out
		East Tecolote (East Clairemont) LT	Non-Vegetated Channel (NVC)	0.0020	In	Out	Out
		East Tecolote Emergency MH 218	Non-Vegetated Channel (NVC)	0.0070	In	Out	Out

	East Tecolote Emergency MH 218	Southern Riparian Forest (SRF)	0.0480	In	Out	Out
	East Tecolote LT (Phase 1)	Southern Riparian Forest (SRF)	0.0060	In	Out	Out
	East Tecolote Manholes 223 and 224 Emergency	Southern Riparian Forest (SRF)	0.0340	In	Out	Out
	East Tecolote Manholes 223 and 224 Emergency	Freshwater Marsh (FM)	0.0390	In	Out	Out
	East Tecolote Manholes 223 and 224 Emergency	Non-Vegetated Channel (NVC)	0.0150	In	Out	Out
	Tecolote (including Mt. Elbrus)	Southern Coast Live Oak Riparian Forest (SCLORF)	0.0200	In	In	Out
	Tecolote Emergency Pipe Repair (Crossing)	Southern Coast Live Oak Riparian Forest (SCLORF)	0.0020	In	In	Out
	Tecolote Emergency Pipe Repair (Crossing)	Emergent Wetland (EW)	0.0020	In	In	Out
	Tecolote LT	Southern Riparian Forest (SRF)	0.3410	In	In	Out
	Tecolote LT	Mule Fat Scrub (MFS)	0.0100	In	In	Out
	Tecolote MH 101 Emergency	Mule Fat Scrub (MFS)	0.0005	In	In	Out
	Tecolote MH 101 Emergency	Non-Vegetated Channel (NVC)	0.0034	In	In	Out
	Tecolote Mt. Ashmun Pipe Protection Emergency	Riparian Forest (RF)	0.0100	In	In	Out
	Tecolote Mt. Ashmun Pipe Protection Erosion Control	Riparian Forest (RF)	0.0020	In	In	Out
	Tecolote North Exposed TS Emergency	Non-Vegetated Channel (NVC)	0.0010	In	In	Out
	Tecolote Pipe Repair Near Manhole 346	Southern Riparian Forest (SRF)	0.0350	In	In	Out
Southern Willow Scrub (SWS)	Central Tecolote Sewer Break Emergency	Southern Riparian Forest (SRF)	0.0230	In	In	Out
	Central Tecolote Sewer Break Emergency	Southern Willow Scrub (SWS)	0.0020	In	In	Out
	East Tecolote (East Clairemont) LT	Southern Willow Scrub (SWS)	0.0010	In	Out	Out
	East Tecolote (East Clairemont) LT	Southern Willow Scrub (SWS)	0.0100	In	Out	Out
	East Tecolote (East Clairemont) LT	Southern Willow Scrub (SWS)	0.0170	In	Out	Out
	East Tecolote (East Clairemont) LT	Southern Willow Scrub (SWS)	0.0030	In	Out	Out
	East Tecolote Manholes 223 and 224 Emergency	Southern Willow Scrub (SWS)	0.0330	In	Out	Out
	Park Mesa Way	Southern Willow Scrub (SWS)	0.1500	In	Out	Out
	Tecolote (including Mt. Elbrus)	Southern Willow Scrub (SWS)	0.0200	In	In	Out
	Tecolote (including Mt. Elbrus)	Southern Willow Scrub (SWS)	0.1100	In	In	Out
	Tecolote Emergency Pipe Repair (Crossing)	Southern Willow Scrub (SWS)	0.0080	In	In	Out
	Tecolote LT	Southern Willow Scrub (SWS)	0.0300	In	In	Out
	Tecolote Mt. Ashmun Pipe Protection Erosion Control	Non-Vegetated Channel (NVC)	0.0010	In	In	Out
	Tecolote Mt. Ashmun Pipe Protection Erosion Control	Southern Willow Scrub (SWS)	0.0010	In	In	Out