

**Barrett Dam**  
**Sunny Day Dam Breach**  
**Overview**  
San Diego County, California  
State Dam ID: 8.000  
& National Dam ID: CA00106



Modeling Date: June-2018  
Map Creation Date: September-2018  
BY: C. Kissick

- Legend**
- Cross Section
  - Flow Path
  - Detailed Sheet Extent
  - Approx. Maximum Flooding Extent



**Notes:**

- This inundation map has been prepared in a manner consistent with that level of care and skill ordinarily exercised by GEI's profession practicing in the same locality, under similar conditions and at the date services are provided. Our conclusions, opinions, and recommendations are based on a limited number of observations, data, and the current guidance and requirements outlined by the California DSOD.
- The information on this graphic representation has been compiled from a variety of sources and is subject to change without notice. GEI makes no representations or warranties, express or implied, as to accuracy, completeness, timeliness, or rights to the use of such information. The information shown on this map is approximate and should be used as a guideline for emergency response and preparation purposes. This document is not intended for use as a land survey project nor is it designed or intended as construction design document. The use or misuse of the information contained on this graphic representation is at the sole risk of the party using or misusing the information.
- All elevations are reported in the NAVD88 vertical datum.
- Inundation depths less than one foot are not shown.
- Mapped depths and arrival times will vary based on breach conditions, hydrologic conditions, modeling assumptions, and other factors. Emergency action plans that utilize these maps may want to consider a factor of safety for arrival times.
- Mapped depths and arrival times downstream of I-5 vary more significantly as a result of tidal influences, hydraulic factors, and specific model assumptions. Inundation depths and arrival times over water bodies (Mission Bay and San Diego Bay) should not be used. Please refer to report text for additional information.

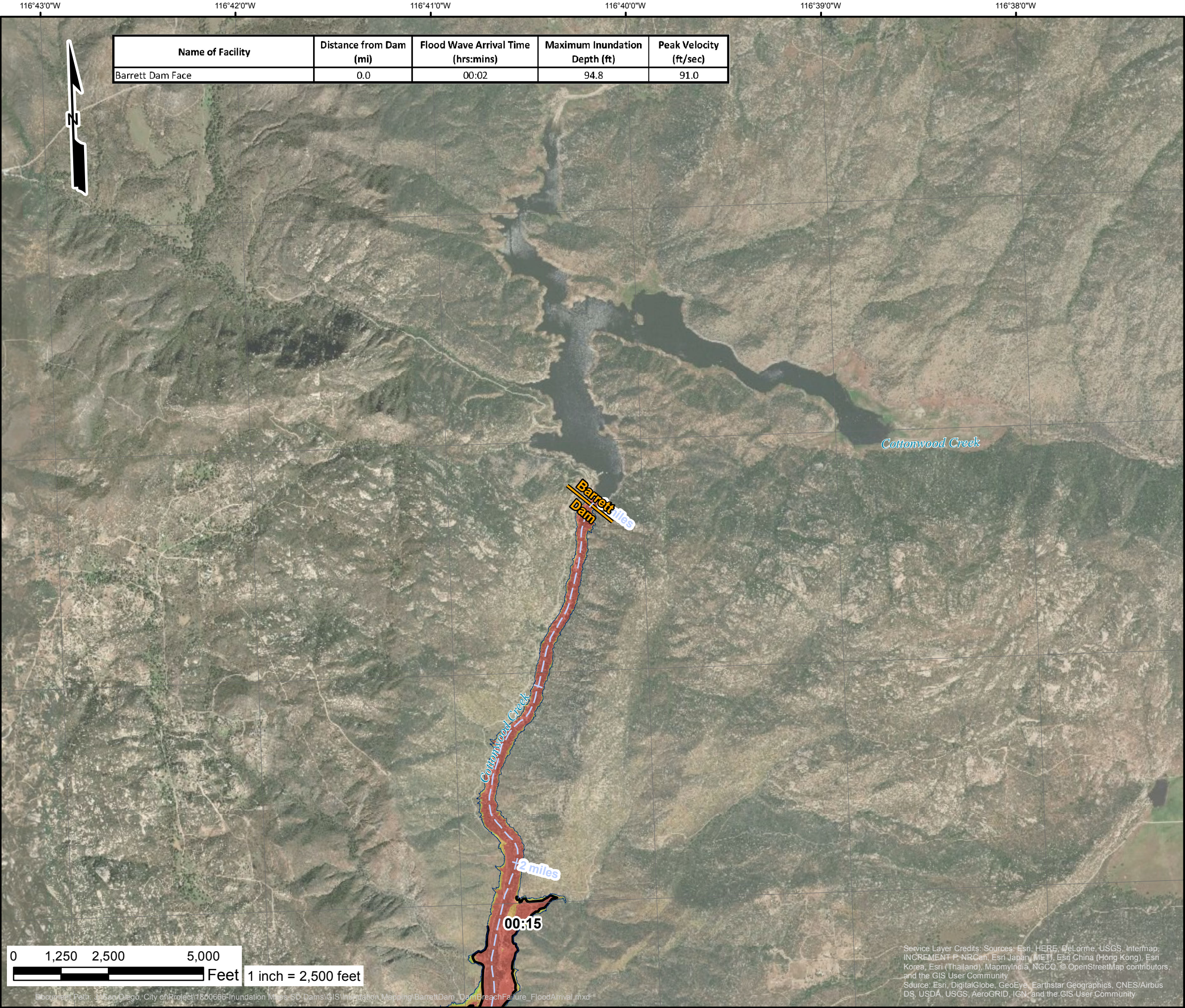
Inundation Analysis Performed by  
and Inundation Maps Created By:  
GEI Consultants, Inc.  
2868 Prospect Park Dr. #400  
Rancho Cordova, CA 95670



Engineer Chong Vang  
License No. 80454

0 7,500 15,000 30,000 Feet  
1 inch = 15,000 feet





### Barrett Dam

### Sunny Day Dam Breach

### Flood Arrival Times

San Diego County, California  
City of San Diego Dam #8.000  
& National Dam ID CA00106

Modeling Date: June-2018

Map Creation Date: September-2018

BY: C. Kissick

#### Legend

**Critical Structures (within 200ft of Max. Flood Extent)**

- Critical Road Point
- CalFire Facility
- Licensed Healthcare Facility
- Law Enforcement Facility
- School

Critical Road

Approx. Time to 1 Foot Depth (hrs:mins)

Cross Section

Flow Path

Approx. Maximum Flooding Extent

Municipal Boundary

**Maximum Inundation Depth (ft)**

- 1 to 2
- 2 to 5
- 5 to 10
- 10 to 20
- 20+

\* Variations in color are dependent upon the background imagery

**Notes:**

1. This inundation map has been prepared in a manner consistent with that level of care and skill ordinarily exercised by GEI's profession practicing in the same locality, under similar conditions and at the date services are provided. Our conclusions, opinions, and recommendations are based on a limited number of observations, data, and the current guidance and requirements outlined by the California DSOD.

2. The information on this graphic representation has been compiled from a variety of sources and is subject to change without notice. GEI makes no representations or warranties, express or implied, as to accuracy, completeness, timeliness, or rights to the use of such information. The information shown on this map is approximate and should be used as a guideline for emergency response and preparation purposes. This document is not intended for use as a land survey project nor is it designed or intended as construction design document. The use or misuse of the information contained on this graphic representation is at the sole risk of the party using or misusing the information.

3. All elevations are reported in the NAVD88 vertical datum.

4. Inundation depths less than one foot are not shown.

5. Mapped depths and arrival times will vary based on breach conditions, hydrologic conditions, modeling assumptions, and other factors. Emergency action plans that utilize these maps may want to consider a factor of safety for arrival times.

Inundation Analysis Performed by  
and Inundation Maps Created By:  
GEI Consultants, Inc.  
2868 Prospect Park Dr. #400  
Rancho Cordova, CA 95670

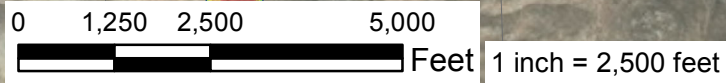
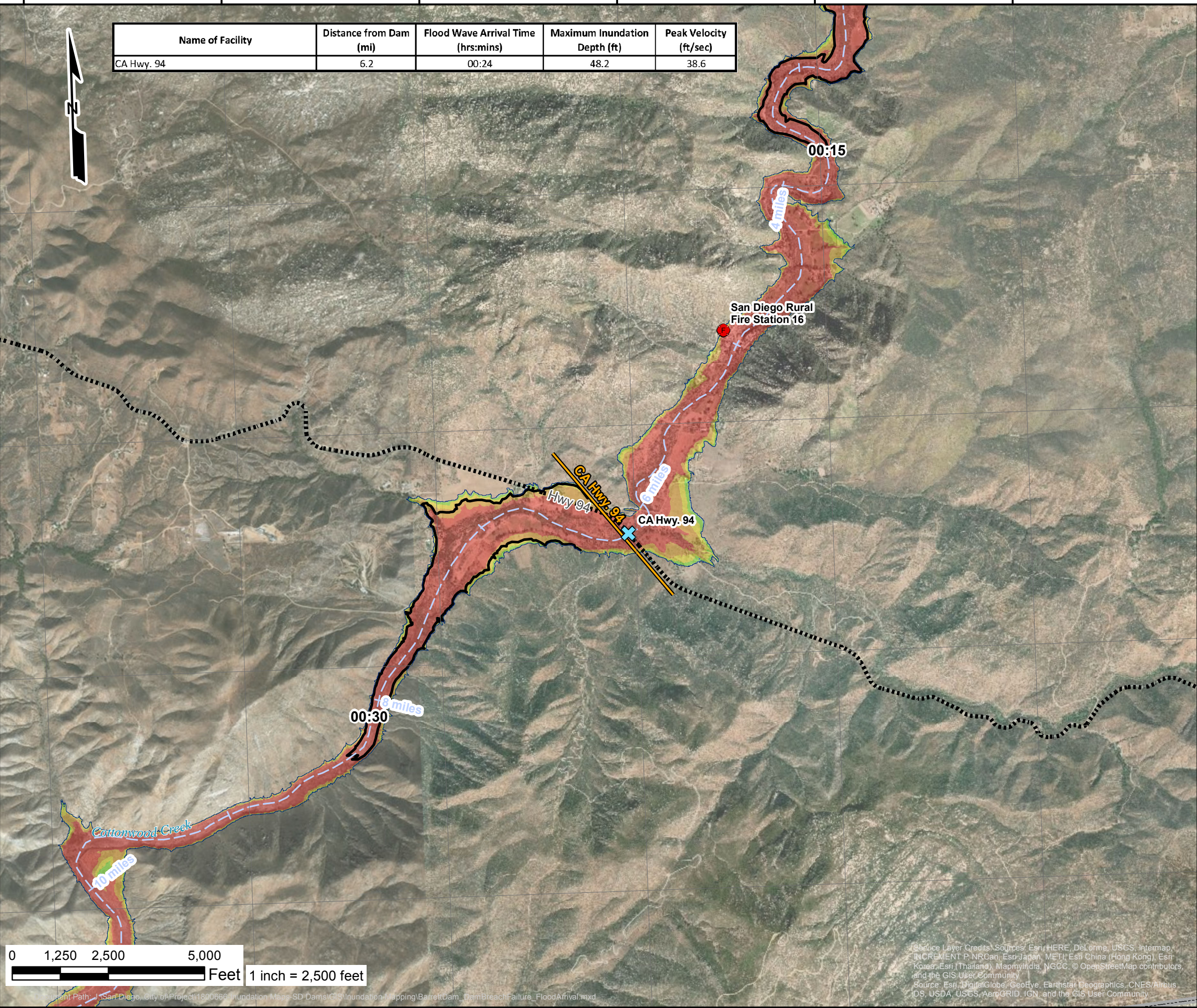
Engineer Chong Vang

License No. 80454



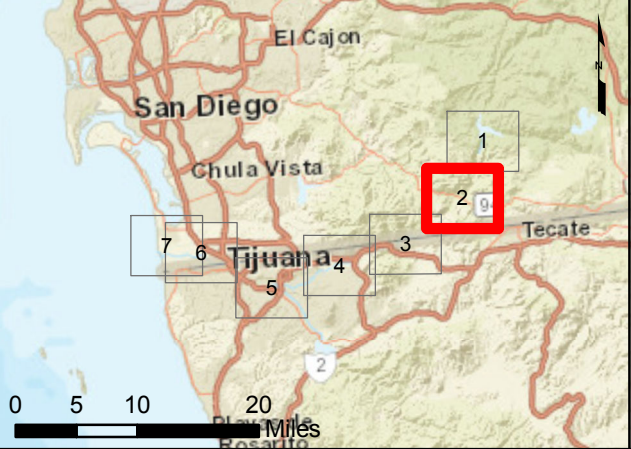
116°45'0"W116°44'0"W116°43'0"W116°42'0"W116°41'0"W116°40'0"W

Name of Facility	Distance from Dam (mi)	Flood Wave Arrival Time (hrs:mins)	Maximum Inundation Depth (ft)	Peak Velocity (ft/sec)
CA Hwy. 94	6.2	00:24	48.2	38.6



Service Layer Credits: Sources: Esri, HERE, DeLorme, USGS, Intermap, INCREMENT P, NRCan, Esri-Japan, METI, Esri China (Hong Kong), Esri Korea, Esri (Thailand), MapmyIndia, NGCC, © OpenStreetMap contributors, and the GIS User Community  
Source: Esri, DigitalGlobe, GeoEye, Earthstar Geographics, CNES/Airbus DS, USDA, USGS, AeroGRID, IGN, and the GIS User Community

**Barrett Dam**  
**Sunny Day Dam Breach**  
**Flood Arrival Times**  
**San Diego County, California**  
**City of San Diego Dam #8.000**  
**& National Dam ID CA00106**



Modeling Date: June-2018  
Map Creation Date: September-2018  
BY: C. Kissick

**Legend**

**Critical Structures (within 200ft of Max. Flood Extent)**

- Critical Road Point
- CalFire Facility
- Licensed Healthcare Facility
- Law Enforcement Facility
- School

Critical Road

Approx. Time to 1 Foot Depth (hrs:mins)

Cross Section

Flow Path

Approx. Maximum Flooding Extent

Municipal Boundary

**Maximum Inundation Depth (ft)**

- 1 to 2
- 2 to 5
- 5 to 10
- 10 to 20
- 20+

\* Variations in color are dependent upon the background imagery

**Notes:**

1. This inundation map has been prepared in a manner consistent with that level of care and skill ordinarily exercised by GEI's profession practicing in the same locality, under similar conditions and at the date services are provided. Our conclusions, opinions, and recommendations are based on a limited number of observations, data, and the current guidance and requirements outlined by the California DSOD.

2. The information on this graphic representation has been compiled from a variety of sources and is subject to change without notice. GEI makes no representations or warranties, express or implied, as to accuracy, completeness, timeliness, or rights to the use of such information. The information shown on this map is approximate and should be used as a guideline for emergency response and preparation purposes. This document is not intended for use as a land survey project nor is it designed or intended as construction design document. The use or misuse of the information contained on this graphic representation is at the sole risk of the party using or misusing the information.

3. All elevations are reported in the NAVD88 vertical datum.

4. Inundation depths less than one foot are not shown.

5. Mapped depths and arrival times will vary based on breach conditions, hydrologic conditions, modeling assumptions, and other factors. Emergency action plans that utilize these maps may want to consider a factor of safety for arrival times.

Inundation Analysis Performed by  
and Inundation Maps Created By:  
GEI Consultants, Inc.  
2868 Prospect Park Dr. #400  
Rancho Cordova, CA 95670



Engineer Chong Vang  
License No. 80454



116°50'0"W 116°49'0"W 116°48'0"W 116°47'0"W 116°46'0"W 116°45'0"W 116°44'0"W

Name of Facility	Distance from Dam (mi)	Flood Wave Arrival Time (hrs:mins)	Maximum Inundation Depth (ft)	Peak Velocity (ft/sec)
Upstream of U.S.-Mex. Border	14.1	00:50	46.8	28.2

Barrett Dam  
Sunny Day Dam Breach  
Flood Arrival Times  
San Diego County, California  
City of San Diego Dam #8.000  
& National Dam ID CA00106



Modeling Date: June-2018  
Map Creation Date: September-2018  
BY: C. Kissick

**Legend**

**Critical Structures (within 200ft of Max. Flood Extent)**

- Critical Road Point
- CalFire Facility
- Licensed Healthcare Facility
- Law Enforcement Facility
- School

Critical Road

Approx. Time to 1 Foot Depth (hrs:mins)

Cross Section

Flow Path

Approx. Maximum Flooding Extent

Municipal Boundary

**Maximum Inundation Depth (ft)**

- 1 to 2
- 2 to 5
- 5 to 10
- 10 to 20
- 20+

\* Variations in color are dependent upon the background imagery

**Notes:**

1. This inundation map has been prepared in a manner consistent with that level of care and skill ordinarily exercised by GEI's profession practicing in the same locality, under similar conditions and at the date services are provided. Our conclusions, opinions, and recommendations are based on a limited number of observations, data, and the current guidance and requirements outlined by the California DSOD.

2. The information on this graphic representation has been compiled from a variety of sources and is subject to change without notice. GEI makes no representations or warranties, express or implied, as to accuracy, completeness, timeliness, or rights to the use of such information. The information shown on this map is approximate and should be used as a guideline for emergency response and preparation purposes. This document is not intended for use as a land survey project nor is it designed or intended as construction design document. The use or misuse of the information contained on this graphic representation is at the sole risk of the party using or misusing the information.

3. All elevations are reported in the NAVD88 vertical datum.

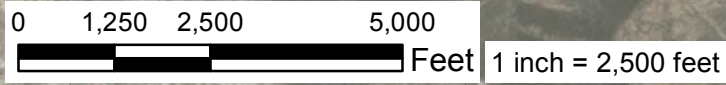
4. Inundation depths less than one foot are not shown.

5. Mapped depths and arrival times will vary based on breach conditions, hydrologic conditions, modeling assumptions, and other factors. Emergency action plans that utilize these maps may want to consider a factor of safety for arrival times.

Inundation Analysis Performed by  
and Inundation Maps Created By:  
GEI Consultants, Inc.  
2868 Prospect Park Dr. #400  
Rancho Cordova, CA 95670

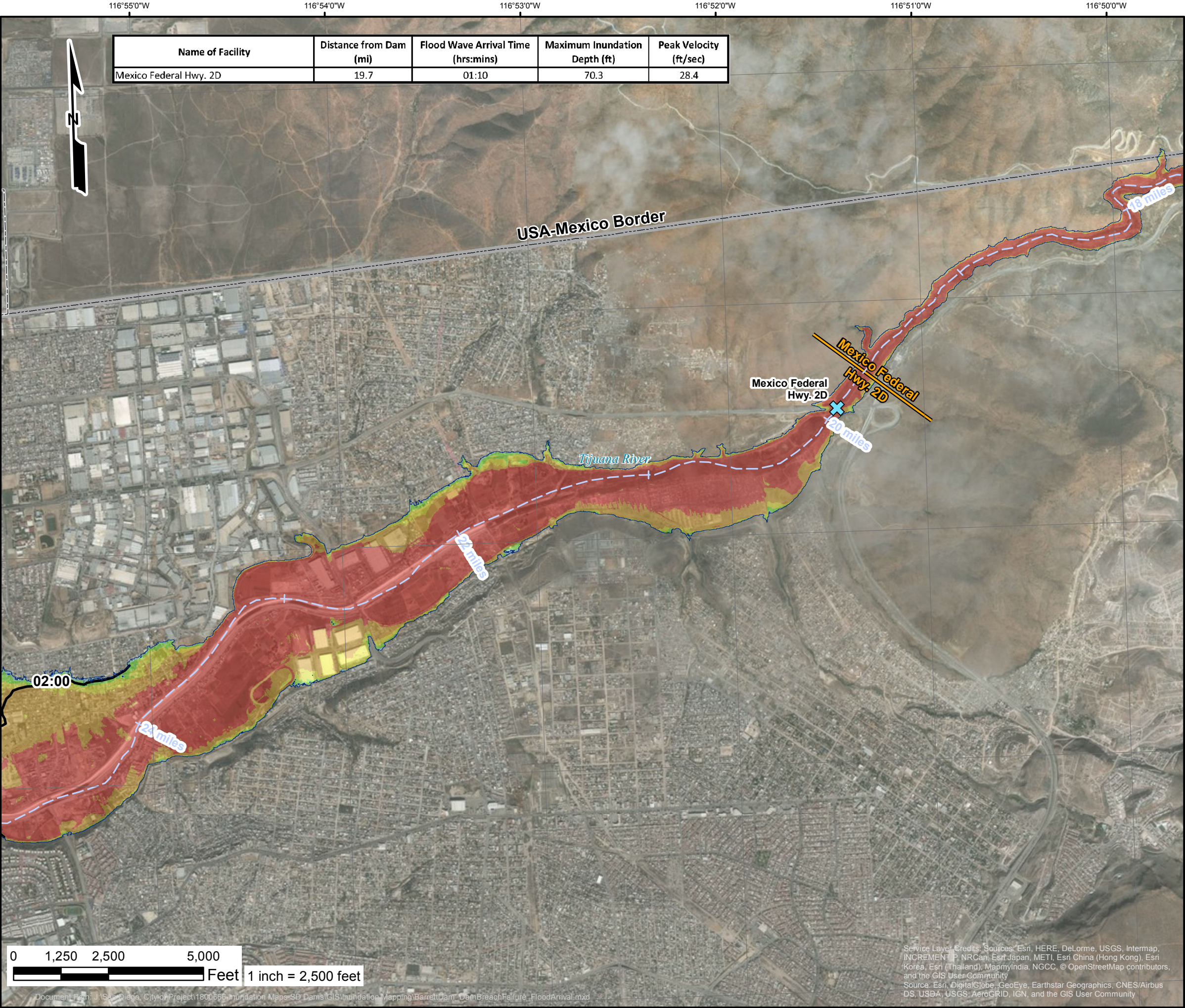


Engineer Chong Vang  
License No. 80454



Service Layer Credits: Sources: Esri, HERE, DeLorme, USGS, Intermap, INCREMENT P, NRCan, Esri Japan, METI, Esri China (Hong Kong), Esri Korea, Esri (Thailand), MapmyIndia, NGCC, © OpenStreetMap contributors, and the GIS User Community  
Source: Esri, DigitalGlobe, GeoEye, Earthstar Geographics, CNES/Airbus DS, USDA, USGS, AeroGRID, IGN, and the GIS User Community





Barrett Dam

Sunny Day Dam Breach

Flood Arrival Times

San Diego County, California

City of San Diego Dam #8.000

& National Dam ID CA00106

Modeling Date: June-2018

Map Creation Date: September-2018

BY: C. Kissick

Legend

Critical Structures (within 200ft of Max. Flood Extent)

Critical Road Point

CalFire Facility

Licensed Healthcare Facility

Law Enforcement Facility

School

Critical Road

Approx. Time to 1 Foot Depth (hrs:mins)

Cross Section

Flow Path

Approx. Maximum Flooding Extent

Municipal Boundary

Maximum Inundation Depth (ft)

1 to 2

2 to 5

5 to 10

10 to 20

20+

\* Variations in color are dependent upon the background imagery

Notes:

1. This inundation map has been prepared in a manner consistent with that level of care and skill ordinarily exercised by GEI's profession practicing in the same locality, under similar conditions and at the date services are provided. Our conclusions, opinions, and recommendations are based on a limited number of observations, data, and the current guidance and requirements outlined by the California DSOD.

2. The information on this graphic representation has been compiled from a variety of sources and is subject to change without notice. GEI makes no representations or warranties, express or implied, as to accuracy, completeness, timeliness, or rights to the use of such information. The information shown on this map is approximate and should be used as a guideline for emergency response and preparation purposes. This document is not intended for use as a land survey project nor is it designed or intended as construction design document. The use or misuse of the information contained on this graphic representation is at the sole risk of the party using or misusing the information.

3. All elevations are reported in the NAVD88 vertical datum.

4. Inundation depths less than one foot are not shown.

5. Mapped depths and arrival times will vary based on breach conditions, hydrologic conditions, modeling assumptions, and other factors. Emergency action plans that utilize these maps may want to consider a factor of safety for arrival times.

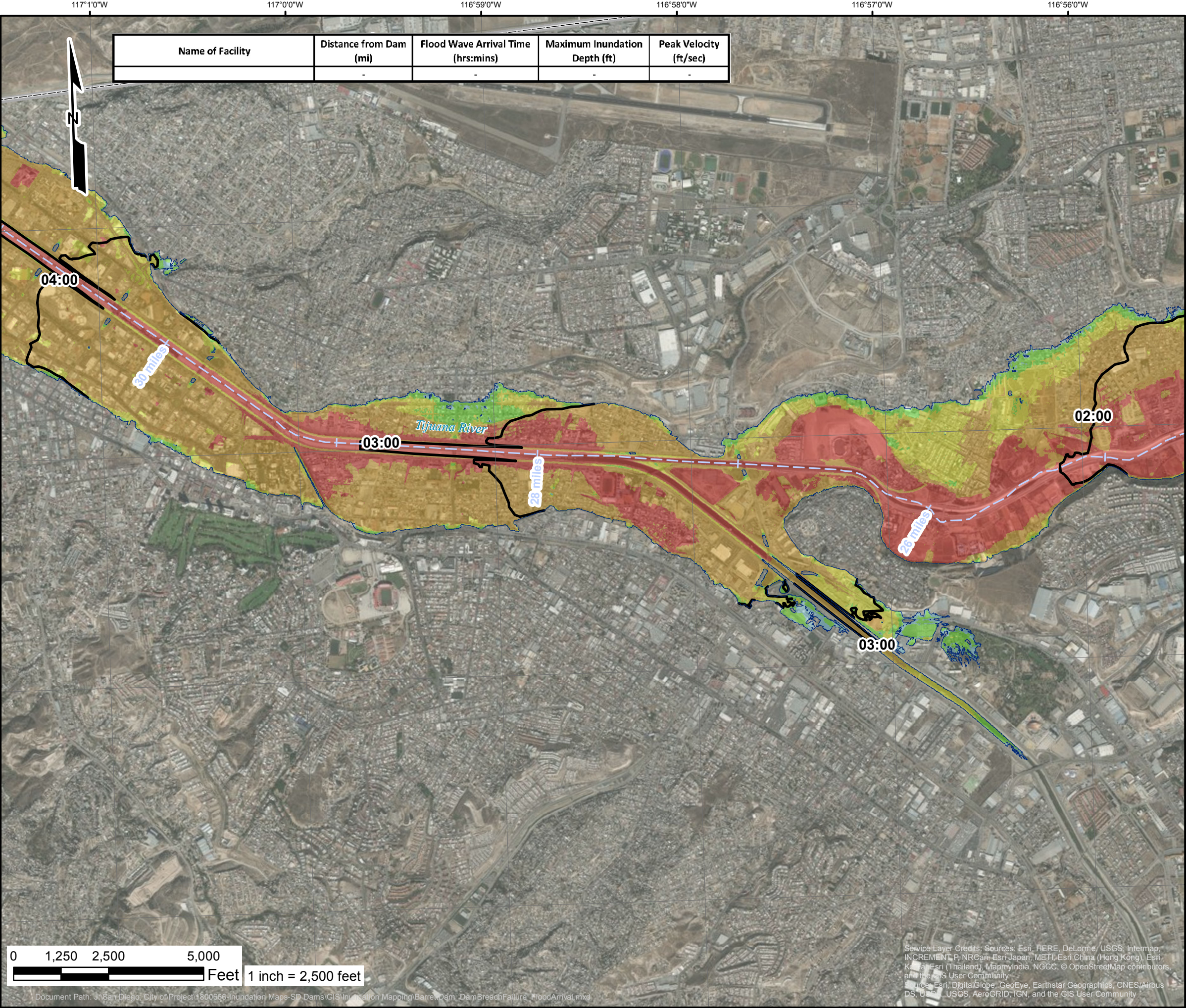
Inundation Analysis Performed by  
and Inundation Maps Created By:  
GEI Consultants, Inc.  
2868 Prospect Park Dr. #400  
Rancho Cordova, CA 95670

Engineer Chong Vang

License No. 80454

Service Layer Credits: Sources: Esri, HERE, DeLorme, USGS, Intermap, INCREMENT P, NRCan, Esri Japan, METI, Esri China (Hong Kong), Esri Korea, Esri (Thailand), MapmyIndia, NGCC, © OpenStreetMap contributors, and the GIS User Community  
Source: Esri, DigitalGlobe, GeoEye, Earthstar Geographics, CNES/Airbus DS, USDA, USGS, AeroGRID, IGN, and the GIS User Community





### Barrett Dam

### Sunny Day Dam Breach

### Flood Arrival Times

San Diego County, California  
City of San Diego Dam #8.000  
& National Dam ID CA00106

0 5 10 20 Miles

Modeling Date: June-2018

Map Creation Date: September-2018

BY: C. Kissick

**Legend**

**Critical Structures (within 200ft of Max. Flood Extent)**

- Critical Road Point
- CalFire Facility
- Licensed Healthcare Facility
- Law Enforcement Facility
- School

Critical Road

Approx. Time to 1 Foot Depth (hrs:mins)

Cross Section

Flow Path

Approx. Maximum Flooding Extent

Municipal Boundary

**Maximum Inundation Depth (ft)**

- 1 to 2
- 2 to 5
- 5 to 10
- 10 to 20
- 20+

\* Variations in color are dependent upon the background imagery

**Notes:**

1. This inundation map has been prepared in a manner consistent with that level of care and skill ordinarily exercised by GEI's profession practicing in the same locality, under similar conditions and at the date services are provided. Our conclusions, opinions, and recommendations are based on a limited number of observations, data, and the current guidance and requirements outlined by the California DSOD.

2. The information on this graphic representation has been compiled from a variety of sources and is subject to change without notice. GEI makes no representations or warranties, express or implied, as to accuracy, completeness, timeliness, or rights to the use of such information. The information shown on this map is approximate and should be used as a guideline for emergency response and preparation purposes. This document is not intended for use as a land survey project nor is it designed or intended as construction design document. The use or misuse of the information contained on this graphic representation is at the sole risk of the party using or misusing the information.

3. All elevations are reported in the NAVD88 vertical datum.

4. Inundation depths less than one foot are not shown.

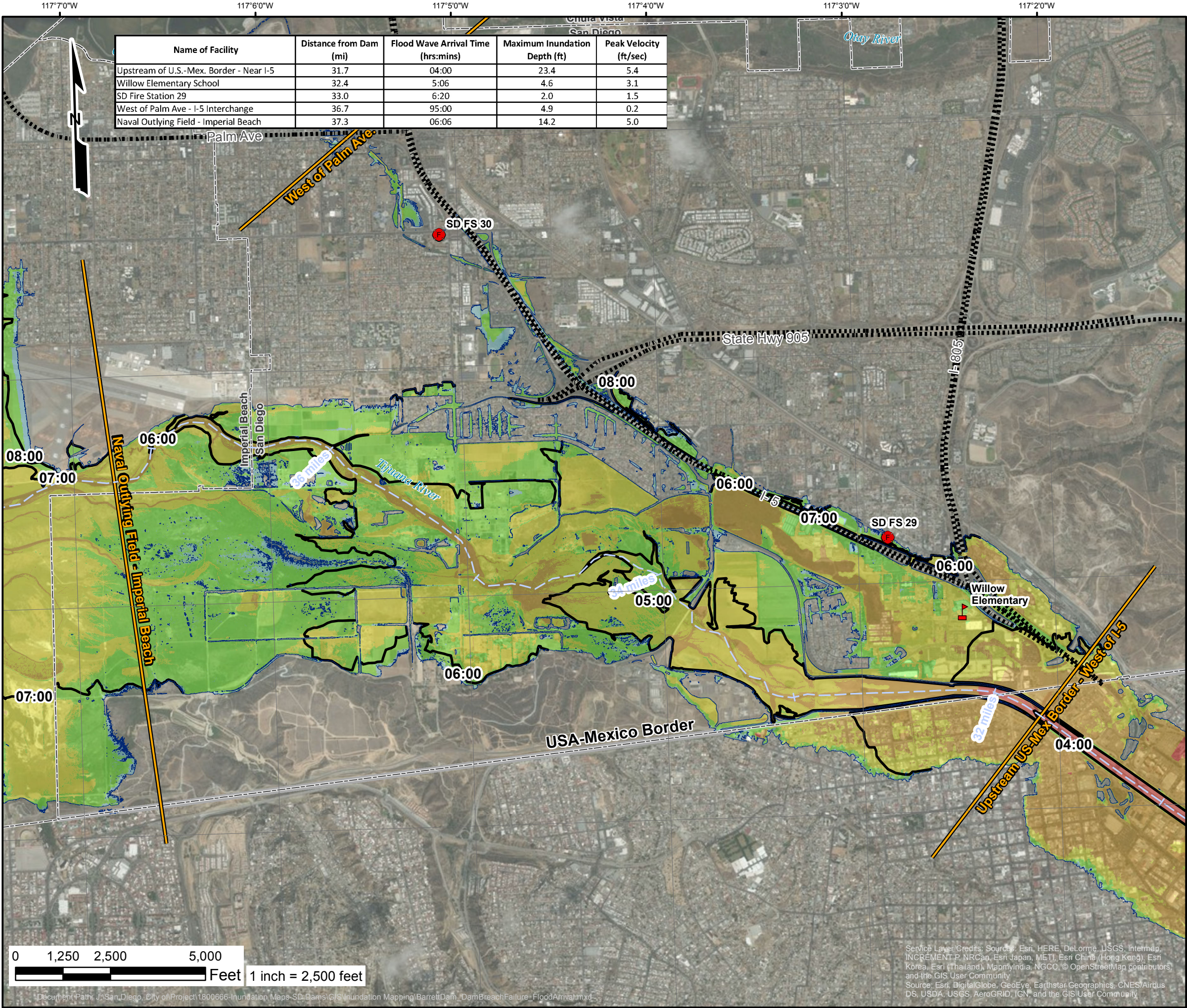
5. Mapped depths and arrival times will vary based on breach conditions, hydrologic conditions, modeling assumptions, and other factors. Emergency action plans that utilize these maps may want to consider a factor of safety for arrival times.

Inundation Analysis Performed by  
and Inundation Maps Created By:  
GEI Consultants, Inc.  
2868 Prospect Park Dr. #400  
Rancho Cordova, CA 95670

Engineer Chong Vang

License No. 80454





### Barrett Dam

### Sunny Day Dam Breach

### Flood Arrival Times

San Diego County, California  
City of San Diego Dam #8.000  
& National Dam ID CA00106

0 5 10 20 Miles

Modeling Date: June-2018

Map Creation Date: September-2018

BY: C. Kissick

#### Legend

**Critical Structures (within 200ft of Max. Flood Extent)**

- Critical Road Point
- CalFire Facility
- Licensed Healthcare Facility
- Law Enforcement Facility
- School

Critical Road

Approx. Time to 1 Foot Depth (hrs:mins)

Cross Section

Flow Path

Approx. Maximum Flooding Extent

Municipal Boundary

**Maximum Inundation Depth (ft)**

- 1 to 2
- 2 to 5
- 5 to 10
- 10 to 20
- 20+

\* Variations in color are dependent upon the background imagery

**Notes:**

1. This inundation map has been prepared in a manner consistent with that level of care and skill ordinarily exercised by GEI's profession practicing in the same locality, under similar conditions and at the date services are provided. Our conclusions, opinions, and recommendations are based on a limited number of observations, data, and the current guidance and requirements outlined by the California DSOD.

2. The information on this graphic representation has been compiled from a variety of sources and is subject to change without notice. GEI makes no representations or warranties, express or implied, as to accuracy, completeness, timeliness, or rights to the use of such information. The information shown on this map is approximate and should be used as a guideline for emergency response and preparation purposes. This document is not intended for use as a land survey project nor is it designed or intended as construction design document. The use or misuse of the information contained on this graphic representation is at the sole risk of the party using or misusing the information.

3. All elevations are reported in the NAVD88 vertical datum.

4. Inundation depths less than one foot are not shown.

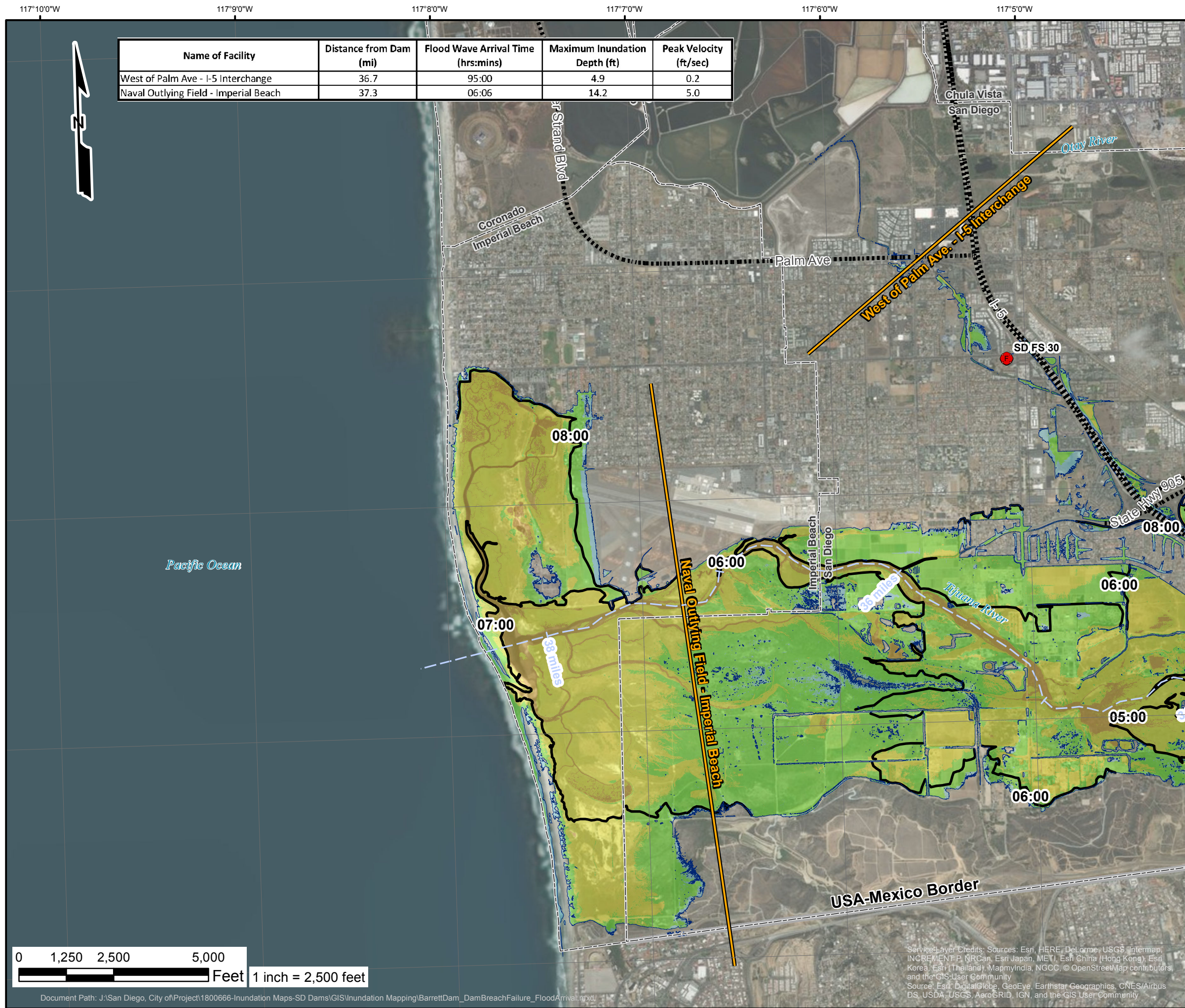
5. Mapped depths and arrival times will vary based on breach conditions, hydrologic conditions, modeling assumptions, and other factors. Emergency action plans that utilize these maps may want to consider a factor of safety for arrival times.

Inundation Analysis Performed by  
and Inundation Maps Created By:  
GEI Consultants, Inc.  
2868 Prospect Park Dr. #400  
Rancho Cordova, CA 95670

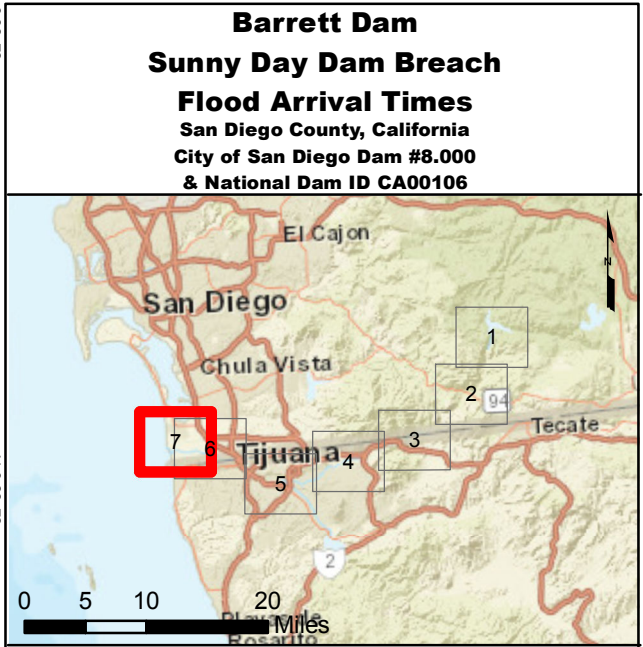
Engineer Chong Vang

License No. 80454





Name of Facility	Distance from Dam (mi)	Flood Wave Arrival Time (hrs:mins)	Maximum Inundation Depth (ft)	Peak Velocity (ft/sec)
West of Palm Ave - I-5 Interchange	36.7	95:00	4.9	0.2
Naval Outlying Field - Imperial Beach	37.3	06:06	14.2	5.0






Modeling Date: June-2018

Map Creation Date: September-2018

BY: C. Kissick

## Legend

### Critical Structures (within 200ft of Max. Flood Extent)

-  Critical Road Point
-  CalFire Facility
-  Licensed Healthcare Facility
-  Law Enforcement Facility
-  School

■■■■■ Critical Road  
 ——— Approx. Time to 1 Foot Depth (hrs:mins)






**Cross Section**

— — Flow Path

☐ Approx. Maximum Flooding Extent

--- Municipal Boundary

### Maximum Inundation Depth (ft)

- |   |          |
|---|----------|
|  | 1 to 2   |
|  | 2 to 5   |
|  | 5 to 10  |
|  | 10 to 20 |
|  | 20+      |

\* Variations in color are dependent upon the background imagery

**Notes:**

1. This inundation map has been prepared in a manner consistent with that level of care and skill ordinarily exercised by GEI's profession practicing in the same locality, under similar conditions and at the date services are provided. Our conclusions, opinions, and recommendations are based on a limited number of observations, data, and the current guidance and requirements outlined by the California DSOD.
2. The information on this graphic representation has been compiled from a variety of sources and is subject to change without notice. GEI makes no representations or warranties, express or implied, as to accuracy, completeness, timeliness, or rights to the use of such information. The information shown on this map is approximate and should be used as a guideline for emergency response and preparation purposes. This document is not intended for use as a land survey project nor is it designed or intended as construction design document. The use or misuse of the information contained on this graphic representation is at the sole risk of the party using or misusing the information.
3. All elevations are reported in the NAVD88 vertical datum.
4. Inundation depths less than one foot are not shown.
5. Mapped depths and arrival times will vary based on breach conditions, hydrologic conditions, modeling assumptions, and other factors. Emergency action plans that utilize these maps may want to consider a factor of safety for arrival times.

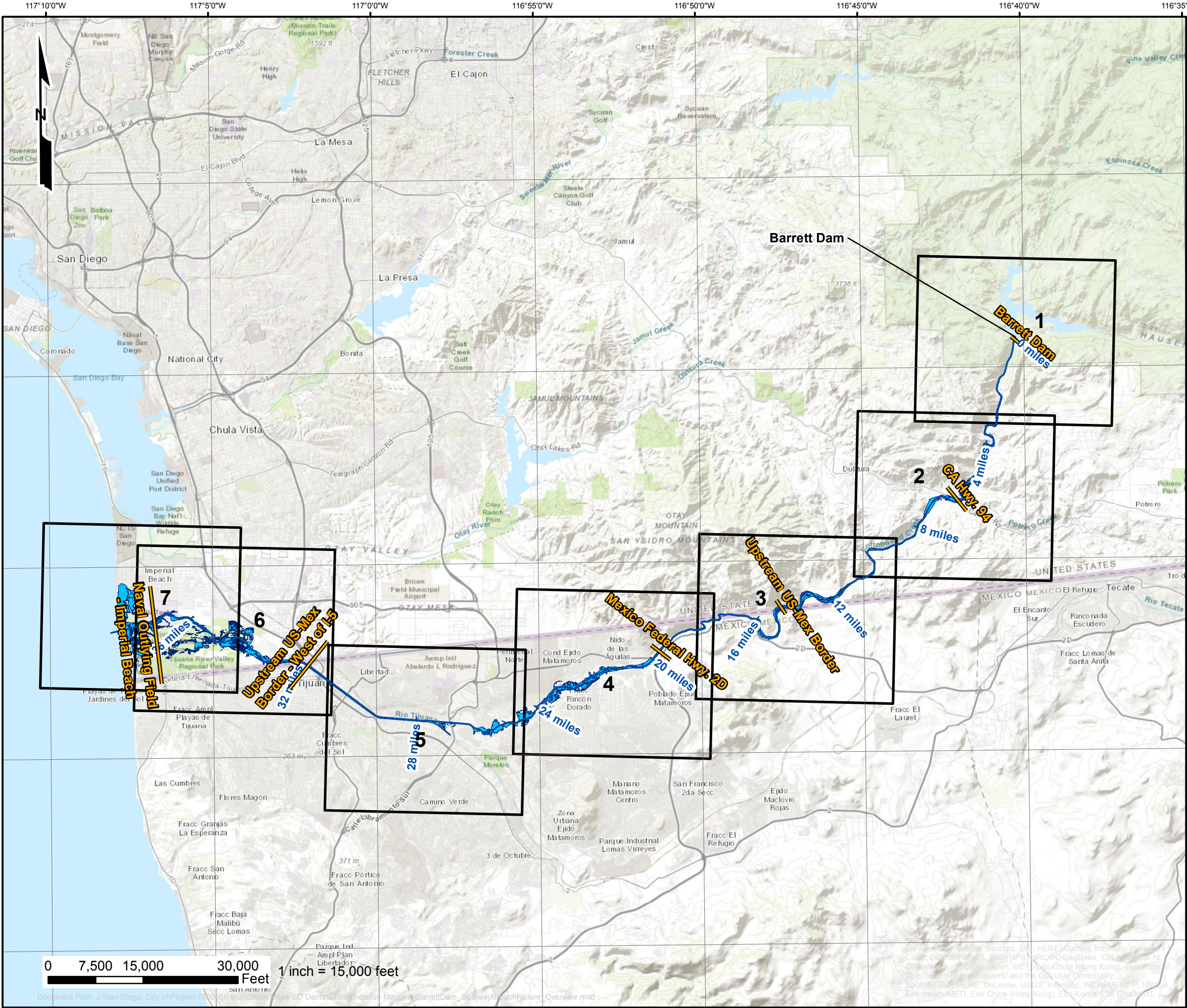
Inundation Analysis Performed by  
and Inundation Maps Created By:  
GEI Consultants, Inc.  
2868 Prospect Park Dr. #400  
Rancho Cordova, CA 95670



Engineer Chong Vang

License No. 80454





### Barrett Dam Spillway Sunny Day Spillway Breach Overview

San Diego County, California  
State Dam ID: 8.000  
& National Dam ID: CA00106

Modeling Date: June-2018  
Map Creation Date: September-2018  
BY: C. Kissick

#### Legend

- Cross Section
- Flow Path
- Detailed Sheet Extent
- Approx. Maximum Flooding Extent



Notes:  
1. This inundation map has been prepared in a manner consistent with that level of care and skill ordinarily exercised by GEI's profession practicing in the same locality, under similar conditions and at the date services are provided. Our conclusions, opinions, and recommendations are based on a limited number of observations, data, and the current guidance and requirements outlined by the California DSOD.  
2. The information on this graphic representation has been compiled from a variety of sources and is subject to change without notice. GEI makes no representations or warranties, express or implied, as to accuracy, completeness, timeliness, or rights to the use of such information. The information shown on this map is approximate and should be used as a guideline for emergency response and preparation purposes. This document is not intended for use as a land survey project nor is it designed or intended as construction design document. The use or misuse of the information contained on this graphic representation is at the sole risk of the party using or misusing the information.  
3. All elevations are reported in the NAVD88 vertical datum.  
4. Inundation depths less than one foot are not shown.  
5. Mapped depths and arrival times will vary based on breach conditions, hydrologic conditions, modeling assumptions, and other factors. Emergency action plans that utilize these maps may want to consider a factor of safety for arrival times.  
6. Mapped depths and arrival times downgradient of I-5 vary more significantly as a result of tidal influences, hydraulic factors, and specific model assumptions. Inundation depths and arrival times over water bodies (Mission Bay and San Diego Bay) should not be used. Please refer to report text for additional information.

Inundation Analysis Performed by  
and Inundation Maps Created By:  
GEI Consultants, Inc.  
2868 Prospect Park Dr. #400  
Rancho Cordova, CA 95670

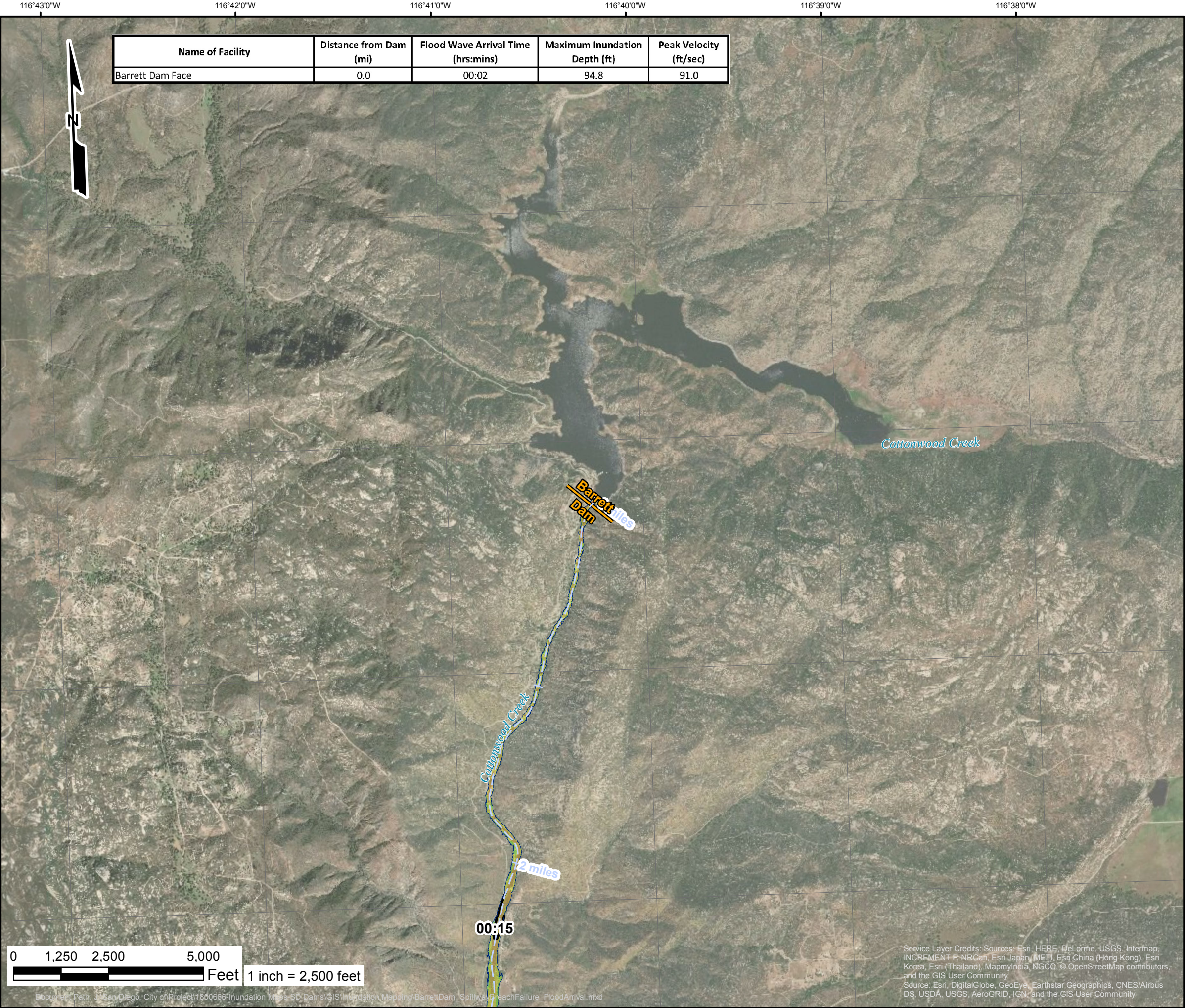
Engineer Chong Vang  
License No. 80454



Source: Esri, HERE, DeLorme, USGS, Intermap, INCREMENT P, NRCan, Esri Japan, METI, Esri China (Hong Kong), Swisstopo, © OpenStreetMap contributors, and the GIS User Community

0 7,500 15,000 30,000 Feet  
1 inch = 15,000 feet





### Barrett Dam Spillway Sunny Day Spillway Breach Flood Arrival Times

San Diego County, California  
City of San Diego Dam #8.000  
& National Dam ID CA00106

0 5 10 20 Miles

Modeling Date: June-2018

Map Creation Date: September-2018

BY: C. Kissick

#### Legend

**Critical Structures (within 200ft of Max. Flood Extent)**

- Critical Road Point
- CalFire Facility
- Licensed Healthcare Facility
- Law Enforcement Facility
- School

Critical Road

Approx. Time to 1 Foot Depth (hrs:mins)

Cross Section

Flow Path

Approx. Maximum Flooding Extent

Municipal Boundary

**Maximum Inundation Depth (ft)**

- 1 to 2
- 2 to 5
- 5 to 10
- 10 to 20
- 20+

\* Variations in color are dependent upon the background imagery

**Notes:**

1. This inundation map has been prepared in a manner consistent with that level of care and skill ordinarily exercised by GEI's profession practicing in the same locality, under similar conditions and at the date services are provided. Our conclusions, opinions, and recommendations are based on a limited number of observations, data, and the current guidance and requirements outlined by the California DSOD.

2. The information on this graphic representation has been compiled from a variety of sources and is subject to change without notice. GEI makes no representations or warranties, express or implied, as to accuracy, completeness, timeliness, or rights to the use of such information. The information shown on this map is approximate and should be used as a guideline for emergency response and preparation purposes. This document is not intended for use as a land survey project nor is it designed or intended as construction design document. The use or misuse of the information contained on this graphic representation is at the sole risk of the party using or misusing the information.

3. All elevations are reported in the NAVD88 vertical datum.

4. Inundation depths less than one foot are not shown.

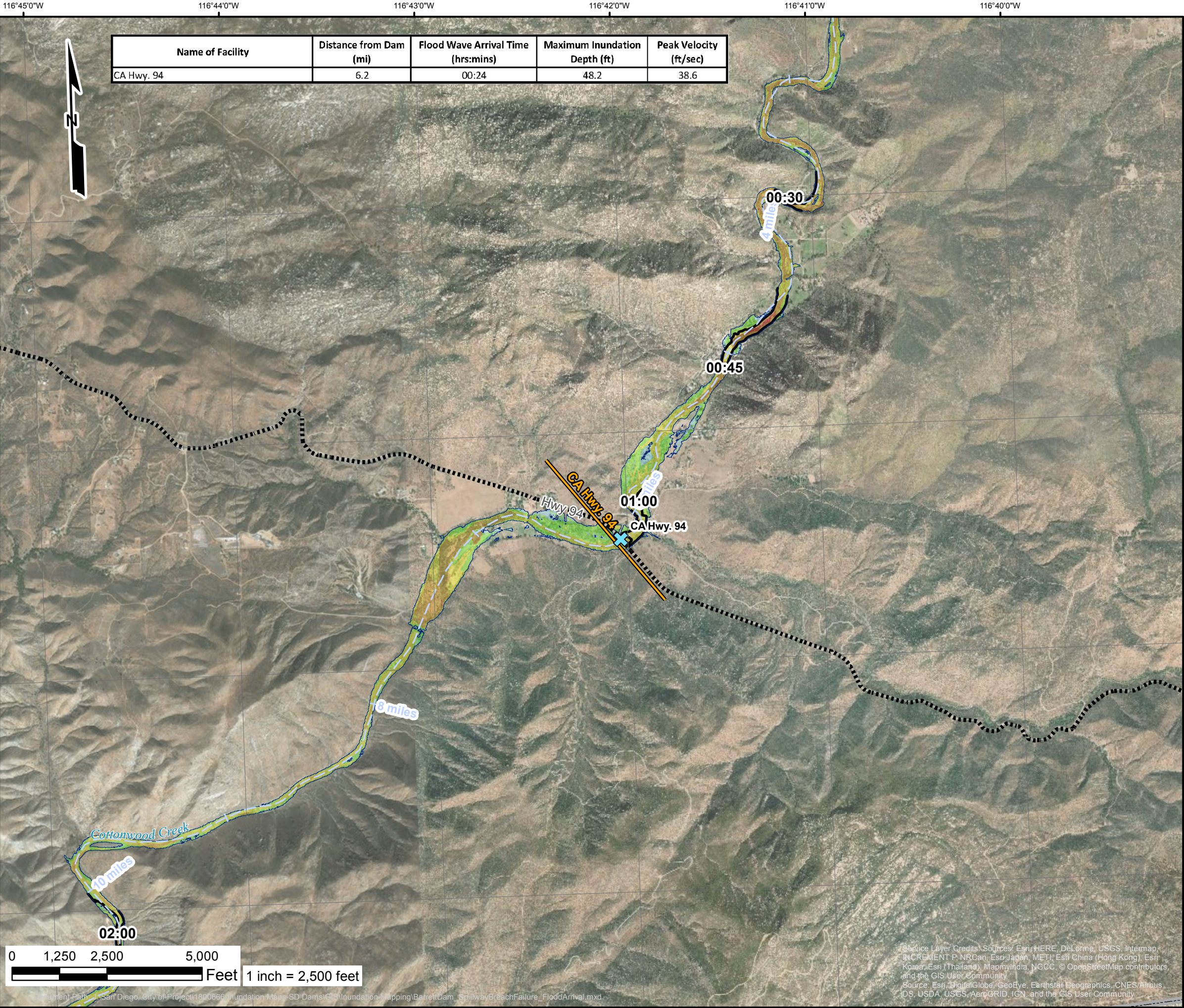
5. Mapped depths and arrival times will vary based on breach conditions, hydrologic conditions, modeling assumptions, and other factors. Emergency action plans that utilize these maps may want to consider a factor of safety for arrival times.

Inundation Analysis Performed by  
and Inundation Maps Created By:  
GEI Consultants, Inc.  
2868 Prospect Park Dr. #400  
Rancho Cordova, CA 95670

Engineer Chong Vang

License No. 80454





### Barrett Dam Spillway Sunny Day Spillway Breach Flood Arrival Times

San Diego County, California  
City of San Diego Dam #8.000  
& National Dam ID CA00106

0 5 10 20 Miles

Modeling Date: June-2018  
Map Creation Date: September-2018  
BY: C. Kissick

#### Legend

**Critical Structures (within 200ft of Max. Flood Extent)**

- Critical Road Point
- CalFire Facility
- Licensed Healthcare Facility
- Law Enforcement Facility
- School

Critical Road  
Approx. Time to 1 Foot Depth (hrs:mins)  
Cross Section  
Flow Path  
Approx. Maximum Flooding Extent  
Municipal Boundary

**Maximum Inundation Depth (ft)**

- 1 to 2
- 2 to 5
- 5 to 10
- 10 to 20
- 20+

\* Variations in color are dependent upon the background imagery

**Notes:**

1. This inundation map has been prepared in a manner consistent with that level of care and skill ordinarily exercised by GEI's profession practicing in the same locality, under similar conditions and at the date services are provided. Our conclusions, opinions, and recommendations are based on a limited number of observations, data, and the current guidance and requirements outlined by the California DSOD.

2. The information on this graphic representation has been compiled from a variety of sources and is subject to change without notice. GEI makes no representations or warranties, express or implied, as to accuracy, completeness, timeliness, or rights to the use of such information. The information shown on this map is approximate and should be used as a guideline for emergency response and preparation purposes. This document is not intended for use as a land survey project nor is it designed or intended as construction design document. The use or misuse of the information contained on this graphic representation is at the sole risk of the party using or misusing the information.

3. All elevations are reported in the NAVD88 vertical datum.

4. Inundation depths less than one foot are not shown.

5. Mapped depths and arrival times will vary based on breach conditions, hydrologic conditions, modeling assumptions, and other factors. Emergency action plans that utilize these maps may want to consider a factor of safety for arrival times.

Inundation Analysis Performed by  
and Inundation Maps Created By:  
GEI Consultants, Inc.  
2868 Prospect Park Dr. #400  
Rancho Cordova, CA 95670

Engineer Chong Vang

License No. 80454



116°50'0"W 116°49'0"W 116°48'0"W 116°47'0"W 116°46'0"W 116°45'0"W 116°44'0"W

Barrett Dam Spillway  
Sunny Day Spillway Breach  
Flood Arrival Times  
San Diego County, California  
City of San Diego Dam #8.000  
& National Dam ID CA00106



Modeling Date: June-2018  
Map Creation Date: September-2018  
BY: C. Kissick

**Legend**

**Critical Structures (within 200ft of Max. Flood Extent)**

- Critical Road Point
- CalFire Facility
- Licensed Healthcare Facility
- Law Enforcement Facility
- School

Critical Road

Approx. Time to 1 Foot Depth (hrs:mins)

Cross Section

Flow Path

Approx. Maximum Flooding Extent

Municipal Boundary

**Maximum Inundation Depth (ft)**

- 1 to 2
- 2 to 5
- 5 to 10
- 10 to 20
- 20+

\* Variations in color are dependent upon the background imagery

**Notes:**

1. This inundation map has been prepared in a manner consistent with that level of care and skill ordinarily exercised by GEI's profession practicing in the same locality, under similar conditions and at the date services are provided. Our conclusions, opinions, and recommendations are based on a limited number of observations, data, and the current guidance and requirements outlined by the California DSOD.

2. The information on this graphic representation has been compiled from a variety of sources and is subject to change without notice. GEI makes no representations or warranties, express or implied, as to accuracy, completeness, timeliness, or rights to the use of such information. The information shown on this map is approximate and should be used as a guideline for emergency response and preparation purposes. This document is not intended for use as a land survey project nor is it designed or intended as construction design document. The use or misuse of the information contained on this graphic representation is at the sole risk of the party using or misusing the information.

3. All elevations are reported in the NAVD88 vertical datum.

4. Inundation depths less than one foot are not shown.

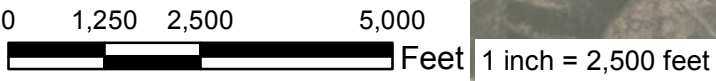
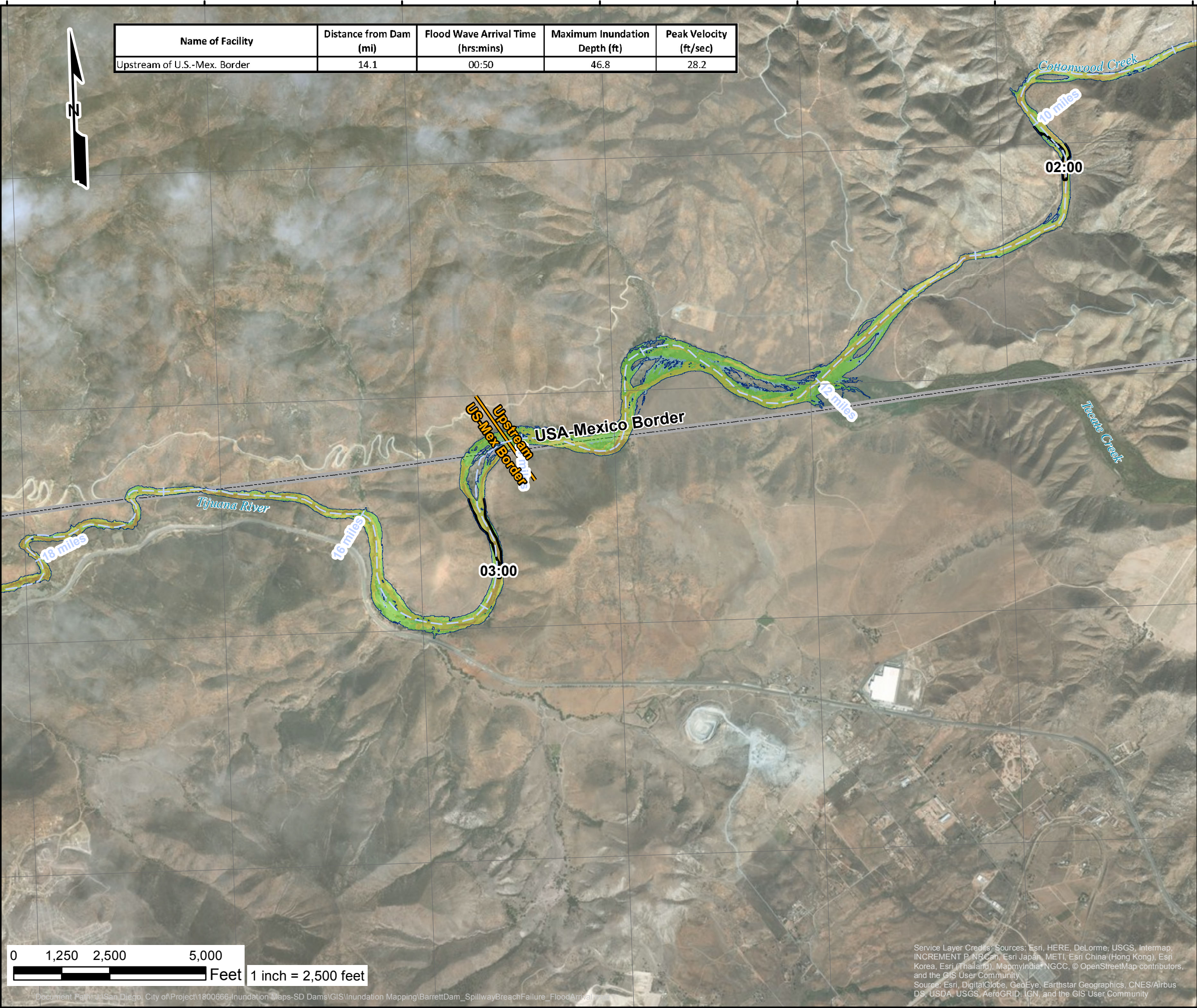
5. Mapped depths and arrival times will vary based on breach conditions, hydrologic conditions, modeling assumptions, and other factors. Emergency action plans that utilize these maps may want to consider a factor of safety for arrival times.

Inundation Analysis Performed by  
and Inundation Maps Created By:  
GEI Consultants, Inc.  
2868 Prospect Park Dr. #400  
Rancho Cordova, CA 95670



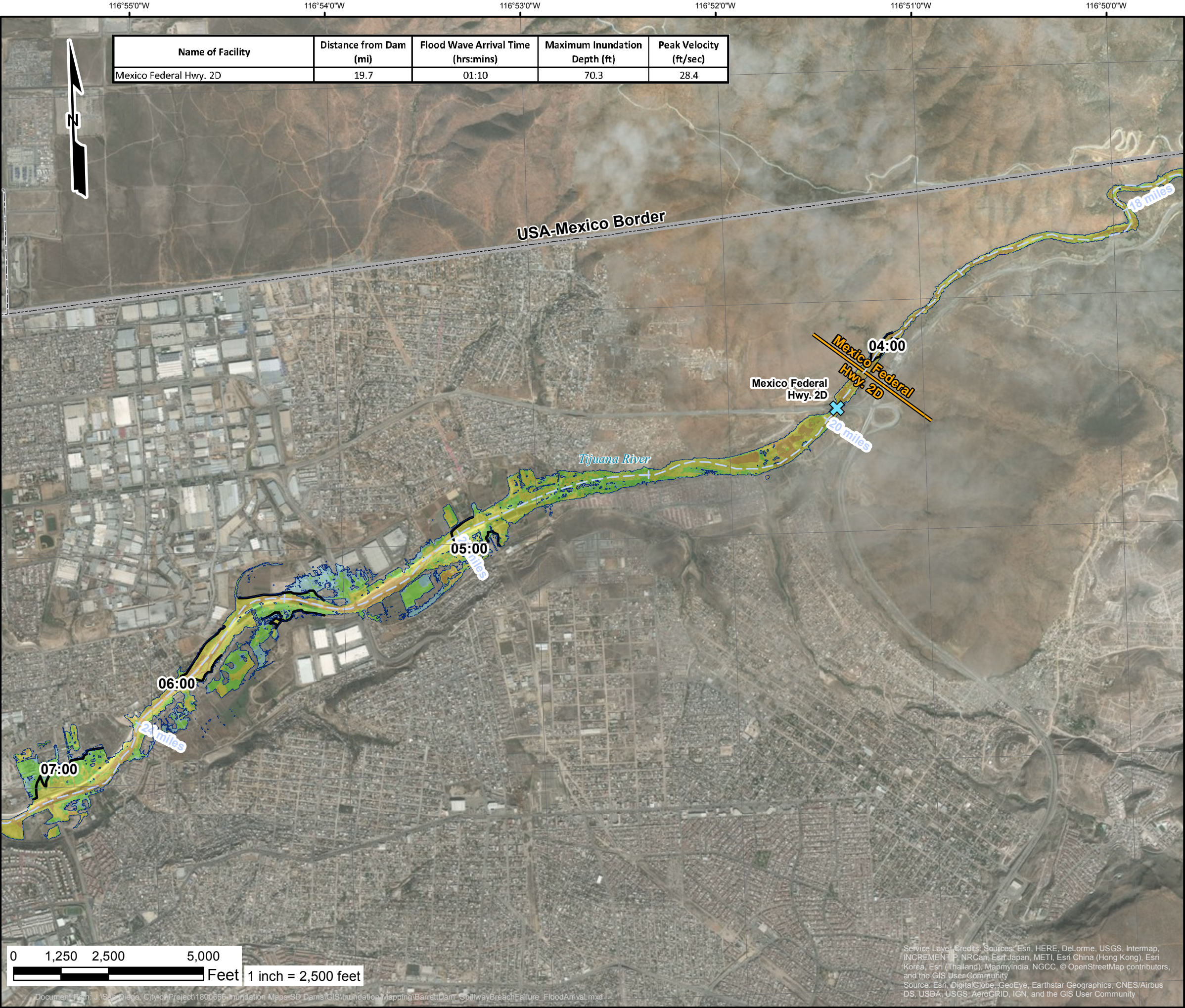
Engineer Chong Vang  
License No. 80454

Name of Facility	Distance from Dam (mi)	Flood Wave Arrival Time (hrs:mins)	Maximum Inundation Depth (ft)	Peak Velocity (ft/sec)
Upstream of U.S.-Mex. Border	14.1	00:50	46.8	28.2



Service Layer Credits: Sources: Esri, HERE, DeLorme, USGS, Intermap, INCREMENT P, NRCan, Esri Japan, METI, Esri China (Hong Kong), Esri Korea, Esri (Thailand), MapmyIndia, NGCC, © OpenStreetMap contributors, and the GIS User Community  
Source: Esri, DigitalGlobe, GeoEye, Earthstar Geographics, CNES/Airbus DS, USDA, USGS, AeroGRID, IGN, and the GIS User Community





### Barrett Dam Spillway Sunny Day Spillway Breach Flood Arrival Times

San Diego County, California  
City of San Diego Dam #8.000  
& National Dam ID CA00106

Modeling Date: June-2018  
Map Creation Date: September-2018  
BY: C. Kissick

#### Legend

**Critical Structures (within 200ft of Max. Flood Extent)**

- Critical Road Point
- CalFire Facility
- Licensed Healthcare Facility
- Law Enforcement Facility
- School

Critical Road  
Approx. Time to 1 Foot Depth (hrs:mins)  
Cross Section  
Flow Path  
Approx. Maximum Flooding Extent  
Municipal Boundary

**Maximum Inundation Depth (ft)**

- 1 to 2
- 2 to 5
- 5 to 10
- 10 to 20
- 20+

\* Variations in color are dependent upon the background imagery

**Notes:**

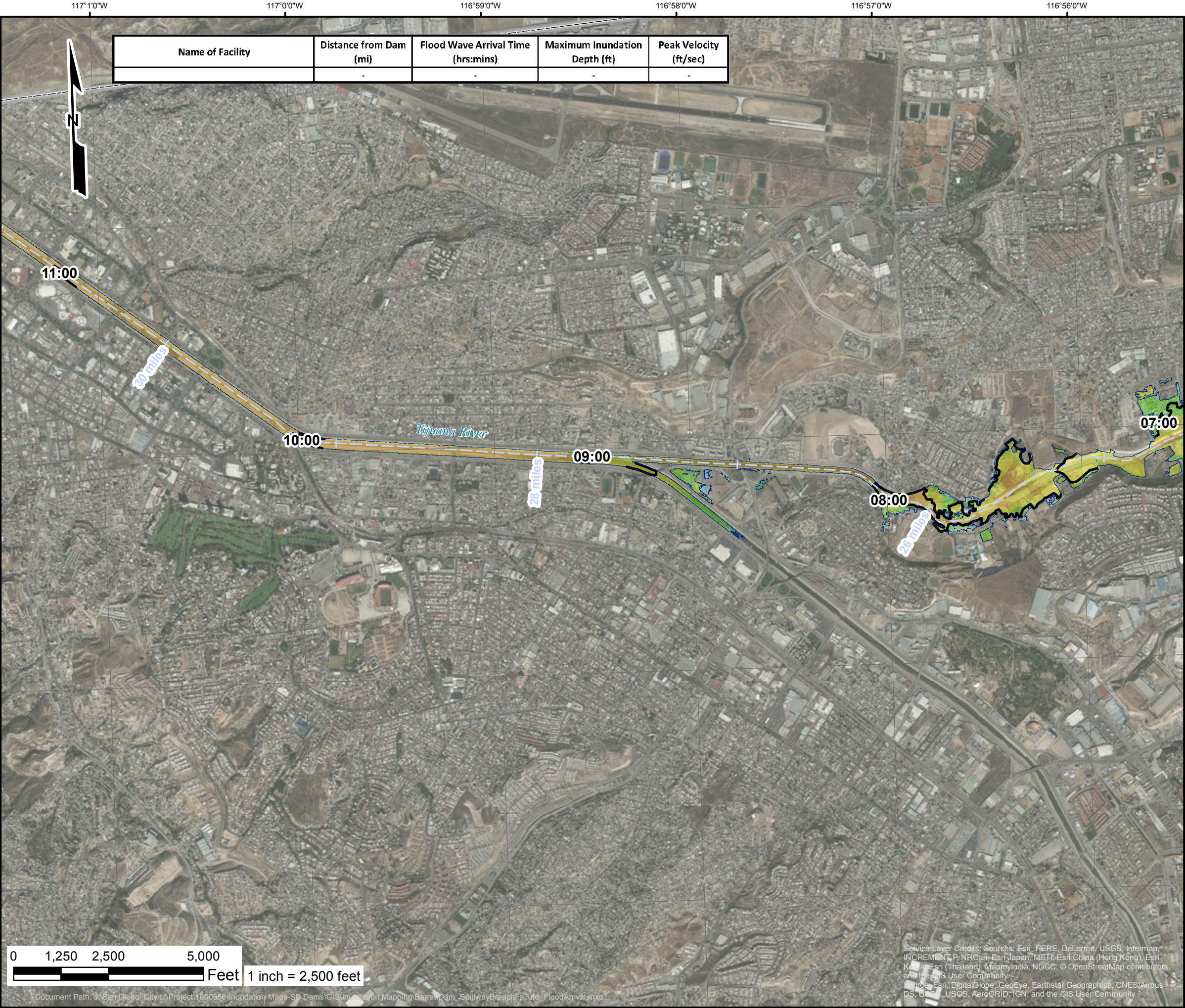
- This inundation map has been prepared in a manner consistent with that level of care and skill ordinarily exercised by GEI's profession practicing in the same locality, under similar conditions and at the date services are provided. Our conclusions, opinions, and recommendations are based on a limited number of observations, data, and the current guidance and requirements outlined by the California DSOD.
- The information on this graphic representation has been compiled from a variety of sources and is subject to change without notice. GEI makes no representations or warranties, express or implied, as to accuracy, completeness, timeliness, or rights to the use of such information. The information shown on this map is approximate and should be used as a guideline for emergency response and preparation purposes. This document is not intended for use as a land survey project nor is it designed or intended as construction design document. The use or misuse of the information contained on this graphic representation is at the sole risk of the party using or misusing the information.
- All elevations are reported in the NAVD88 vertical datum.
- Inundation depths less than one foot are not shown.
- Mapped depths and arrival times will vary based on breach conditions, hydrologic conditions, modeling assumptions, and other factors. Emergency action plans that utilize these maps may want to consider a factor of safety for arrival times.

Inundation Analysis Performed by  
and Inundation Maps Created By:  
GEI Consultants, Inc.  
2868 Prospect Park Dr. #400  
Rancho Cordova, CA 95670

Engineer Chong Vang  
License No. 80454

Service Layer Credits: Sources: Esri, HERE, DeLorme, USGS, Intermap, INCREMENT P, NRCan, Esri Japan, METI, Esri China (Hong Kong), Esri Korea, Esri (Thailand), MapmyIndia, NGCC, © OpenStreetMap contributors, and the GIS User Community  
Source: Esri, DigitalGlobe, GeoEye, Earthstar Geographics, CNES/Airbus DS, USDA, USGS, AeroGRID, IGN, and the GIS User Community





### Barrett Dam Spillway Sunny Day Spillway Breach

#### Flood Arrival Times

San Diego County, California  
City of San Diego Dam #8.000  
& National Dam ID CA00106

0 5 10 20 Miles

Modeling Date: June-2018

Map Creation Date: September-2018

BY: C. Kissick

#### Legend

**Critical Structures (within 200ft of Max. Flood Extent)**

- Critical Road Point
- CalFire Facility
- Licensed Healthcare Facility
- Law Enforcement Facility
- School

Critical Road

Approx. Time to 1 Foot Depth (hrs:mins)

Cross Section

Flow Path

Approx. Maximum Flooding Extent

Municipal Boundary

**Maximum Inundation Depth (ft)**

- 1 to 2
- 2 to 5
- 5 to 10
- 10 to 20
- 20+

\* Variations in color are dependent upon the background imagery

**Notes:**

1. This inundation map has been prepared in a manner consistent with that level of care and skill ordinarily exercised by GEI's profession practicing in the same locality, under similar conditions and at the date services are provided. Our conclusions, opinions, and recommendations are based on a limited number of observations, data, and the current guidance and requirements outlined by the California DSOD.

2. The information on this graphic representation has been compiled from a variety of sources and is subject to change without notice. GEI makes no representations or warranties, express or implied, as to accuracy, completeness, timeliness, or rights to the use of such information. The information shown on this map is approximate and should be used as a guideline for emergency response and preparation purposes. This document is not intended for use as a land survey project nor is it designed or intended as construction design document. The use or misuse of the information contained on this graphic representation is at the sole risk of the party using or misusing the information.

3. All elevations are reported in the NAVD88 vertical datum.

4. Inundation depths less than one foot are not shown.

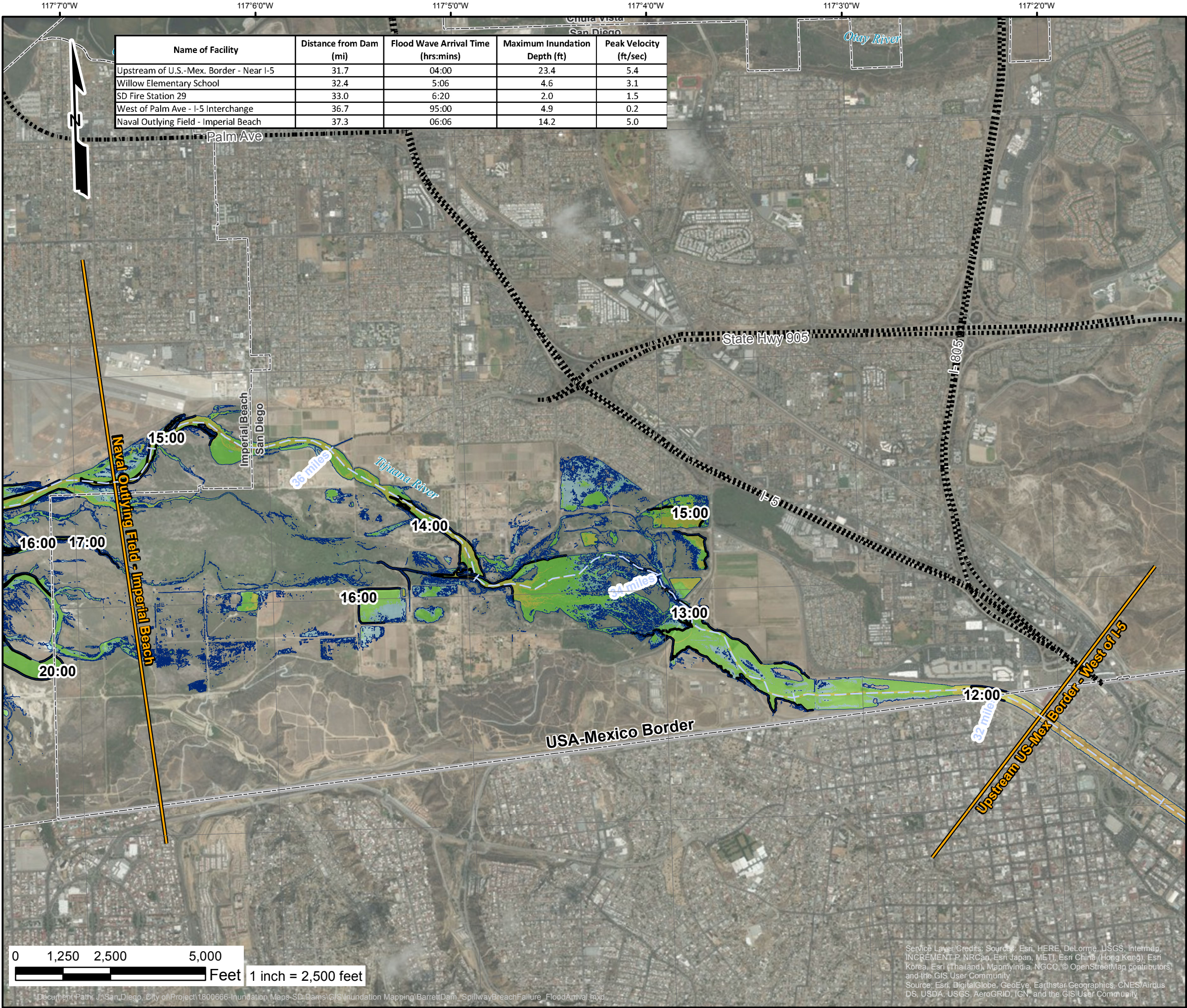
5. Mapped depths and arrival times will vary based on breach conditions, hydrologic conditions, modeling assumptions, and other factors. Emergency action plans that utilize these maps may want to consider a factor of safety for arrival times.

Inundation Analysis Performed by  
and Inundation Maps Created By:  
GEI Consultants, Inc.  
2868 Prospect Park Dr. #400  
Rancho Cordova, CA 95670

Engineer Chong Vang

License No. 80454





### Barrett Dam Spillway Sunny Day Spillway Breach Flood Arrival Times

San Diego County, California  
City of San Diego Dam #8.000  
& National Dam ID CA00106

0 5 10 20 Miles

Modeling Date: June-2018  
Map Creation Date: September-2018  
BY: C. Kissick

**Legend**

**Critical Structures (within 200ft of Max. Flood Extent)**

- Critical Road Point
- CalFire Facility
- Licensed Healthcare Facility
- Law Enforcement Facility
- School

Critical Road

Approx. Time to 1 Foot Depth (hrs:mins)

Cross Section

Flow Path

Approx. Maximum Flooding Extent

Municipal Boundary

**Maximum Inundation Depth (ft)**

- 1 to 2
- 2 to 5
- 5 to 10
- 10 to 20
- 20+

\* Variations in color are dependent upon the background imagery

**Notes:**

1. This inundation map has been prepared in a manner consistent with that level of care and skill ordinarily exercised by GEI's profession practicing in the same locality, under similar conditions and at the date services are provided. Our conclusions, opinions, and recommendations are based on a limited number of observations, data, and the current guidance and requirements outlined by the California DSOD.

2. The information on this graphic representation has been compiled from a variety of sources and is subject to change without notice. GEI makes no representations or warranties, express or implied, as to accuracy, completeness, timeliness, or rights to the use of such information. The information shown on this map is approximate and should be used as a guideline for emergency response and preparation purposes. This document is not intended for use as a land survey project nor is it designed or intended as construction design document. The use or misuse of the information contained on this graphic representation is at the sole risk of the party using or misusing the information.

3. All elevations are reported in the NAVD88 vertical datum.

4. Inundation depths less than one foot are not shown.

5. Mapped depths and arrival times will vary based on breach conditions, hydrologic conditions, modeling assumptions, and other factors. Emergency action plans that utilize these maps may want to consider a factor of safety for arrival times.

Inundation Analysis Performed by  
and Inundation Maps Created By:  
GEI Consultants, Inc.  
2868 Prospect Park Dr. #400  
Rancho Cordova, CA 95670

Engineer Chong Vang

License No. 80454



117°10'0"W 117°9'0"W 117°8'0"W 117°7'0"W 117°6'0"W 117°5'0"W



Name of Facility	Distance from Dam (mi)	Flood Wave Arrival Time (hrs:mins)	Maximum Inundation Depth (ft)	Peak Velocity (ft/sec)
West of Palm Ave - I-5 Interchange	36.7	95:00	4.9	0.2
Naval Outlying Field - Imperial Beach	37.3	06:06	14.2	5.0

Imperial Beach  
Coronado  
Imperial Beach

Palm Ave

Chula Vista  
San Diego

City River

State Hwy 905

Pacific Ocean

Naval Outlying Field - Imperial Beach

USA-Mexico Border

36 miles

Tijuana River

16:00

17:00

20:00

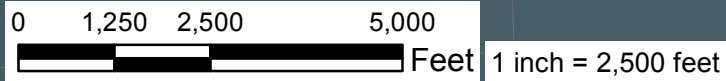
15:00

14:00

16:00

20:00

17:00



Service Layer Credits: Sources: Esri, HERE, DeLorme, USGS, Intermap, INCREMENT P, NRCan, Esri Japan, METI, Esri China (Hong Kong), Esri Korea, Esri (Thailand), MapmyIndia, NGCC, © OpenStreetMap contributors, and the GIS User Community  
Source: Esri, DigitalGlobe, GeoEye, Earthstar Geographics, CNES/Airbus DS, USDA, USGS, AeroGRID, IGN, and the GIS User Community

Document Path: J:\San Diego, City of\Project\1800666-Inundation Maps-SD Dams\GIS\Inundation Mapping\BarrettDam\_SpillwayBreachFailure\_FloodArrival.mxd

**Barrett Dam Spillway  
Sunny Day Spillway Breach  
Flood Arrival Times**  
San Diego County, California  
City of San Diego Dam #8.000  
& National Dam ID CA00106



Modeling Date: June-2018  
Map Creation Date: September-2018  
BY: C. Kissick

**Legend**  
**Critical Structures (within 200ft of Max. Flood Extent)**

- Critical Road Point
- CalFire Facility
- Licensed Healthcare Facility
- Law Enforcement Facility
- School
- Critical Road
- Approx. Time to 1 Foot Depth (hrs:mins)
- Cross Section
- Flow Path
- Approx. Maximum Flooding Extent
- Municipal Boundary

**Maximum Inundation Depth (ft)**

1 to 2	
2 to 5	
5 to 10	
10 to 20	
20+	

\* Variations in color are dependent upon the background imagery

Notes:  
1. This inundation map has been prepared in a manner consistent with that level of care and skill ordinarily exercised by GEI's profession practicing in the same locality, under similar conditions and at the date services are provided. Our conclusions, opinions, and recommendations are based on a limited number of observations, data, and the current guidance and requirements outlined by the California DSOD.  
2. The information on this graphic representation has been compiled from a variety of sources and is subject to change without notice. GEI makes no representations or warranties, express or implied, as to accuracy, completeness, timeliness, or rights to the use of such information. The information shown on this map is approximate and should be used as a guideline for emergency response and preparation purposes. This document is not intended for use as a land survey project nor is it designed or intended as construction design document. The use or misuse of the information contained on this graphic representation is at the sole risk of the party using or misusing the information.  
3. All elevations are reported in the NAVD88 vertical datum.  
4. Inundation depths less than one foot are not shown.  
5. Mapped depths and arrival times will vary based on breach conditions, hydrologic conditions, modeling assumptions, and other factors. Emergency action plans that utilize these maps may want to consider a factor of safety for arrival times.

Inundation Analysis Performed by  
and Inundation Maps Created By:  
GEI Consultants, Inc.  
2868 Prospect Park Dr. #400  
Rancho Cordova, CA 95670



Engineer Chong Vang  
License No. 80454