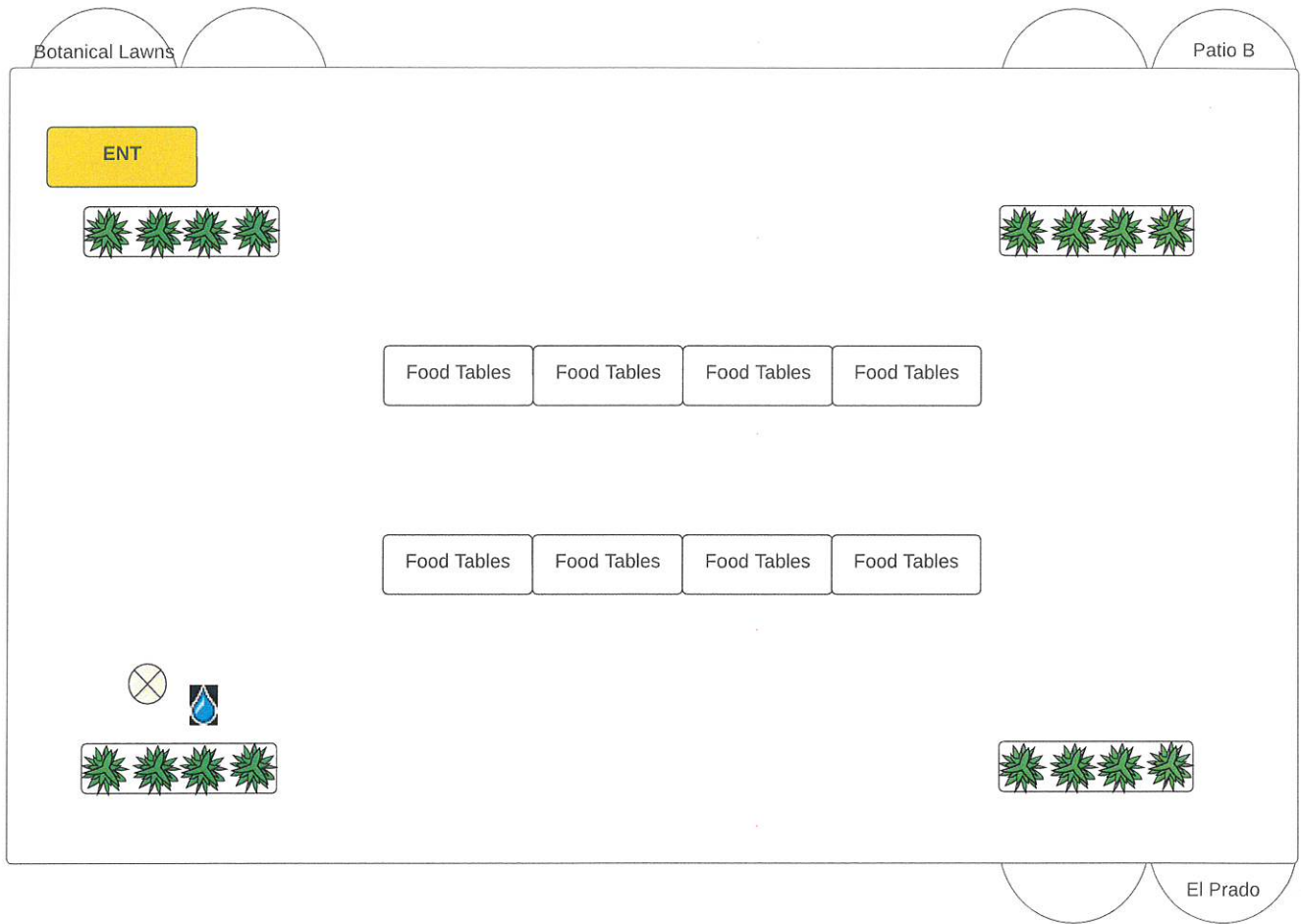


**Information Priority List For Individuals Presenting Special Event Proposals To the Balboa Park Committee: Presentations Will Be Limited to 5 Minutes**

1. Name of Event – 2022 Esri User Conference Party
2. When –
  - a. Date(s) – Thursday, July 14, 2022
  - b. Time (including Set-up & Break-down)-  
Event Time: July 13, 2022 5pm- 10pm  
Setup: Wednesday, July 13, 2022: 7pm-10pm and Thursday, July 14, 2022: 8am-5pm  
Load Out: Thursday, July 14, 2022 by 11:59pm (except dumpsters picked up on July 15, 2022 by 12pm)
  - c. During the Moratorium (Memorial Day – Labor Day) - Yes
3. Where (Provide map(s) showing location & site plan- Casa Del Prado- Patio A and Patio B, Bea Evenson Fountain, El Prado, Plaza de Panama, Cascades
  - a. Road Closure(s)- Village Place from Old Globe Way to El Prado: Thursday, July 14, 2022 3pm-11:29pm. Closure requested for security reasons by San Diego Police Department. Parents dropping off/picking up children from Casa de Balboa will be allowed through.
  - b. Parking Lot Closure(s)- Casa de Balboa Parking Lot: 21 stalls Monday, July 11, 2022- Thursday, July 14, 2022 for catering trucks, Botanical Building Parking Lot: 3 stalls for vendor loading/unloading July 14, 2022, Pepper Grove North Lot: 3 stalls for vendor loading/unloading July 14, 2022.
  - c. Bridge Closure- No
4. Estimated Attendance – 9,075
5. Amplified Music – Yes
  - a. Other prolonged noise impacts? No
  - b. Acts on a local or national level? Local
  - c. When do you plan to conduct event sound checks? 3-5pm
6. Do you plan to apply for an Alcohol Permit? Yes, alcohol will be served in the museum venues under existing alcohol contracts. Will be seeking to have alcohol in Casa Del Prado- Patio B
7. Partnering with a park entity? Yes
  - a. Which one(s)? The San Diego Museum of Art, Mingei International Museum, The San Diego Natural History Museum, Prado Restaurant, Fleet Science Center, Museum of Photographic Arts, Model Railroad Museum, and the San Diego History Center
8. Public Benefit Non-Profit? No
9. Have completed noticing Park Institutions? I have spoke with all groups who we will be contracting with and have notified the BPCP.
10. Are there performances at the:
  - a. Old Globe – Yes, beginning at 8pm. In previous years we have been able to successfully mitigate their concerns and work closely with the team to make sure the event did not pose a noise issue to their patrons. In addition to all Esri staffers will not park in the Alcazar lot and majority attendees arrive by bus.
  - b. Organ Pavilion – Not that the calendar shows.
11. Other special event of more than 500 people occurring concurrently? No
  - a. Location(s) in the Park
12. Will you be making a donation to Balboa Park, a facility or institution located in the Park or outside the Park? No
  - a. How much – NA
  - b. Who – NA
13. Other unique event feature not covered above? This even was previous held in Balboa Park 2011-2014 and 2016-2019.

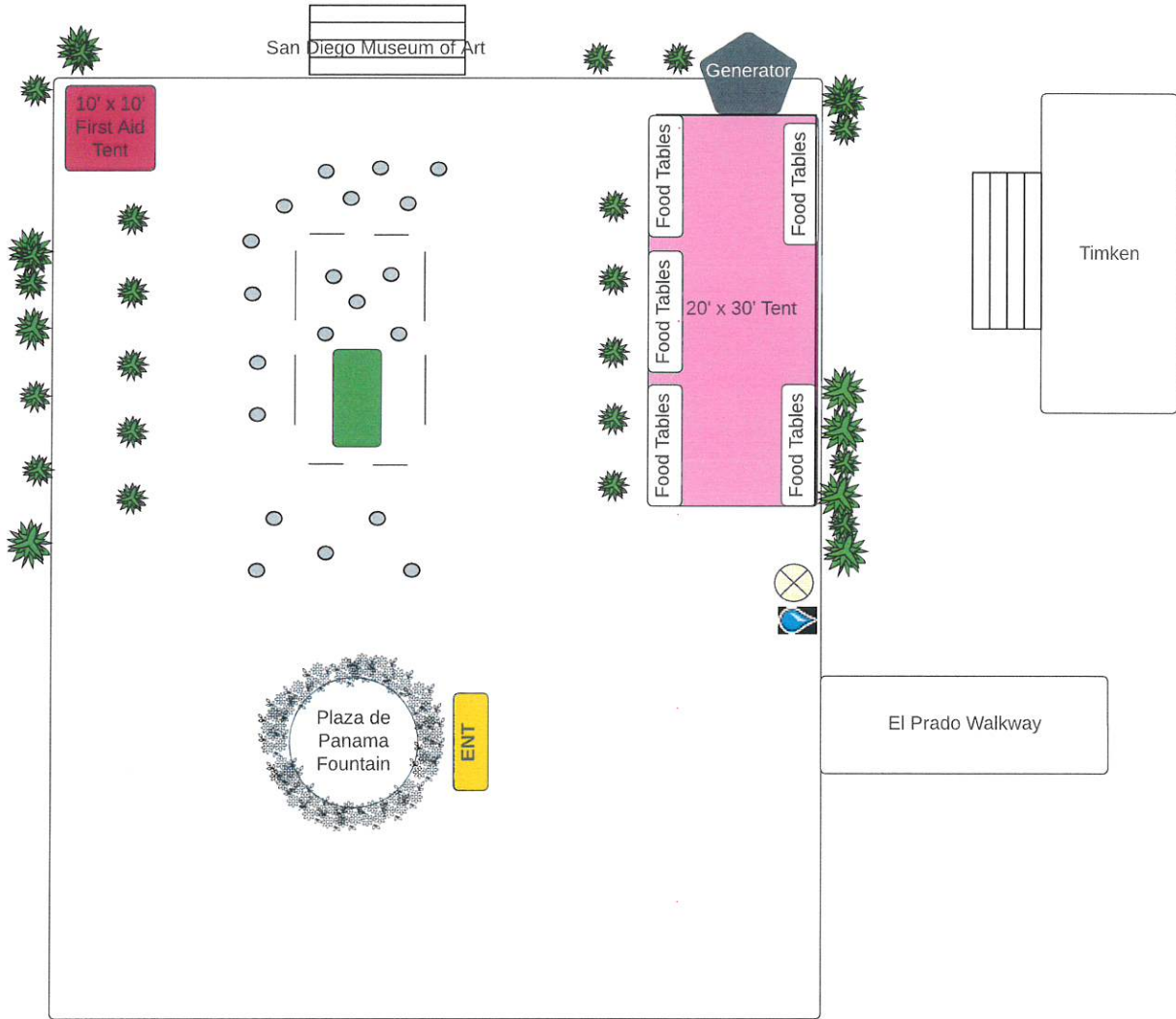
Esri UC Thursday Night Party - Thursday, July 14, 2022

Casa De Balboa - Patio A



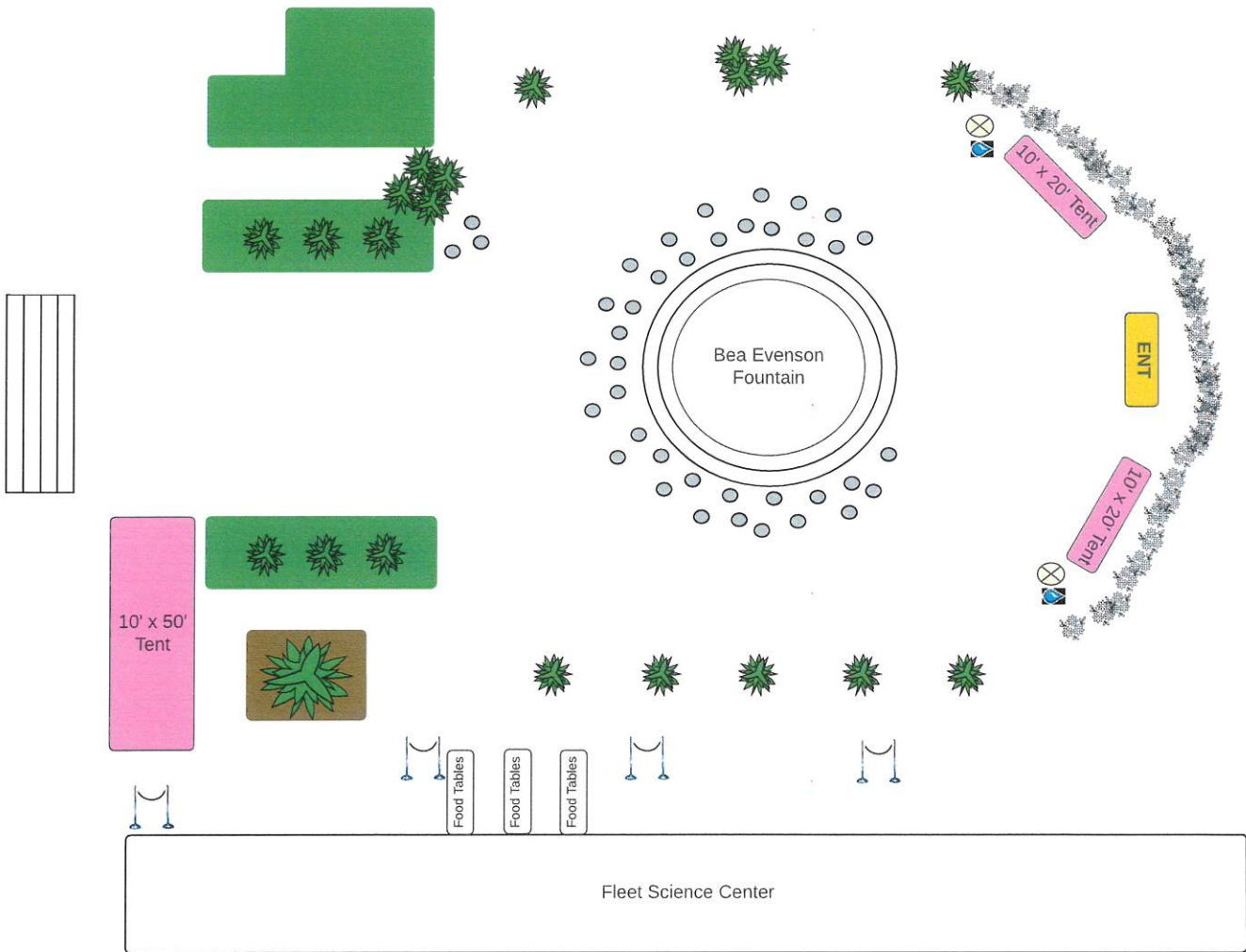
Esri UC Thursday Night Party - Thursday, July 14, 2022

Plaza de Panama



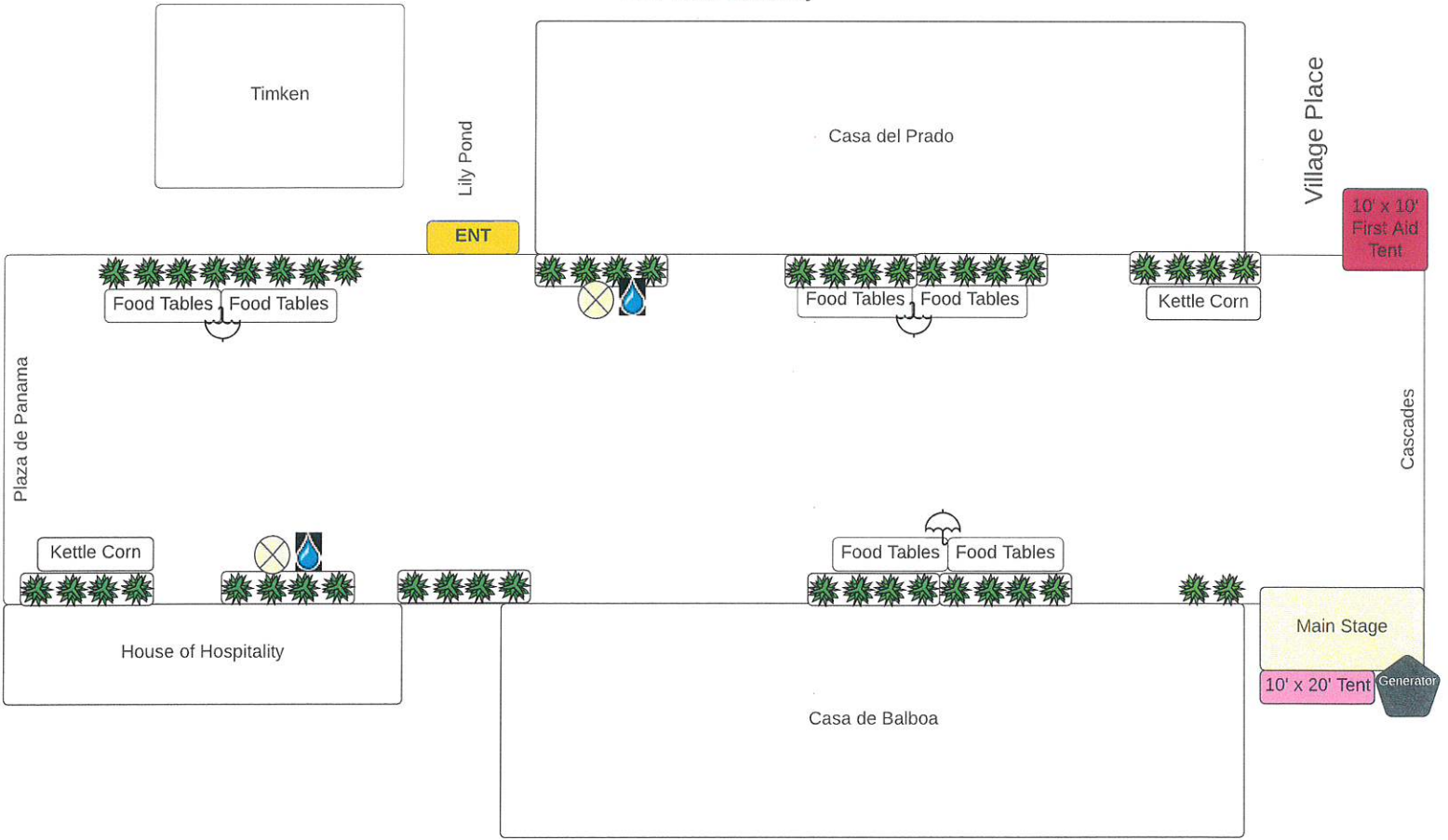
Esri UC Thursday Night Party - Thursday, July 14, 2022

Bea Evenson Fountain





Esri UC Thursday Night Party - Thursday, July 14, 2022

EL Prado Walkway



# Esri UC Thursday Night Party—July, 11, 2019

## Generator Requirements

-  = Power needed or spider boxes.
-  = Generators

1. Generator for Plaza de Panama (+2-20amp for lights)
2. Generator for lighting, food and entertainment outside of NAT
3. Generator for House of Hospitality Ballroom
4. Spider box for cotton candy & El Prado & Hydration Station
5. Generator for lighting Small band on El Prado (Lily Pond) (2-20amp for lights)
6. Power for Entertainment and lighting outside Timken and Lilly Pond
7. Power for Patio A
8. Generator for kitchen on Village Place (moved from Botanical Lawns
9. Power for Patio B Stage
10. Power for Lighting along street that runs near NAT
11. Power for Audio/Lighting for Main Stage (include cable ramps)
12. 70 KVA—Generator for Main Stage (+1 –20amp for lights)
13. Generator for Bea Evenson Fountain Food Prep Tent (+1 –20amp for lights)
14. Generator for Food Tents in Bea Evenson Fountain
15. Power for Hydration Station (15 amps)

