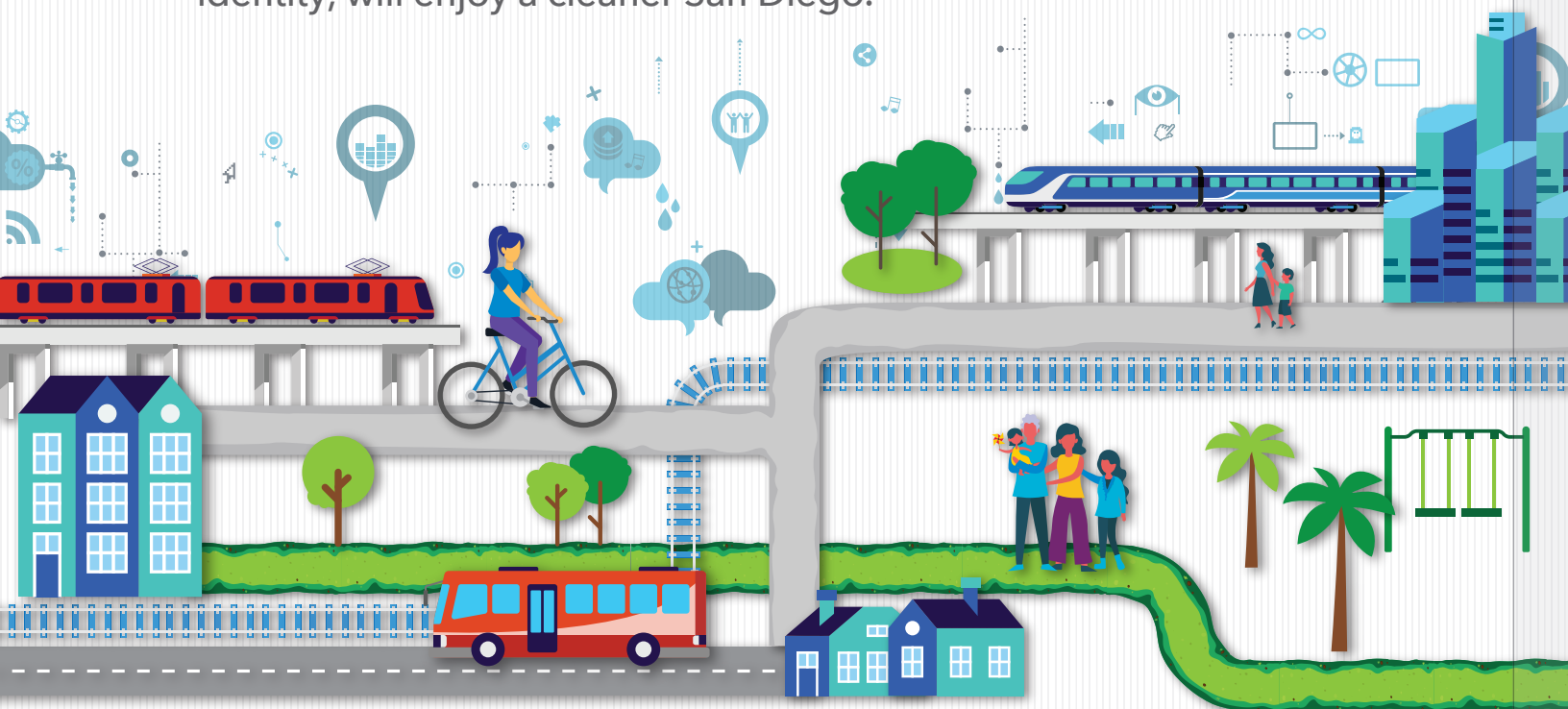




MOBILITY CHOICES

Mobility Choices aims to connect every San Diegan with safe and convenient mobility alternatives that can reliably connect them to jobs, shopping, services, neighborhood parks, open spaces and other amenities.

The City of San Diego's landmark Climate Action Plan includes a broad range of activities aimed at reducing the level of emissions into our atmosphere, while promoting a healthier and more active lifestyle. With more mobility choices, roads can become less congested and everyone, regardless of their background and identity, will enjoy a cleaner San Diego.



COMPLETE COMMUNITIES MOBILITY CHOICES

GOALS:

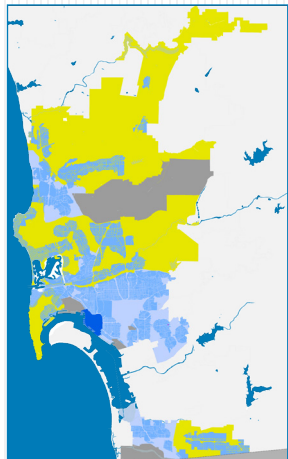
- PROVIDE SAN DIEGANS** with more mobility options for commuting and recreating
- PROVIDE SAFE &** convenient transportation choices
- PROMOTE A HEALTHIER,** more active lifestyle
- REDUCE GREENHOUSE GAS** emissions & support clean air for all

MOBILITY CHOICES

- Reduces Vehicle Miles Traveled (VMT) by increasing active transportation and transit options for San Diegans to have greater choices in how they access work and their communities.
- Strategically plans and implements the mobility network around transit hubs and existing development, where the improvements are most likely to be used.
- Supports the development of an enhanced mobility network through pedestrian, bicycle network and transit supportive amenities.
- Develops a funding source through a Active Transportation In Lieu Fee to be used to implement active transportation infrastructure in Transit Priority Areas (TPAs) and VMT efficient areas.

PROGRAM DESCRIPTION

Development in TPAs and Mobility Zones 1 and 2 (shown in blue) required to construct on-site VMT reducing amenities (such as shade trees or enhanced pedestrian facilities), with options to pay an in-lieu fee.



Development in Mobility Zone 3 (shown in yellow) to pay Active Transportation In Lieu Fee, calculated using VMT Fee Calculator to reduce VMT impacts. Funds to be used to build VMT active transportation infrastructure within TPAs and Mobility Zones 1 and 2.

Certain exemptions apply, including affordable housing, industrial development, projects located in downtown, and multi-family residential development within TPAs.

PROGRAM COMPONENTS

Adoption of Mobility Choices Regulations Ordinance

Adoption of Amendments to Land Development Manual:

- New City CEQA Significance Determination Thresholds for Transportation.
- New Appendix R: Transportation Study Manual
- New Appendix S: VMT Reducing Amenities

Adoption of Active Transportation In Lieu Fee

Rollout of VMT Fee Calculator.

REGULATORY REQUIREMENTS

SENATE BILL 743

Changes transportation impact analysis for CEQA compliance from level of service (LOS) to vehicle miles traveled (VMT).

Project impacts and mitigation are focused on measures, such as active transportation improvements that reduce VMT, rather than accommodating additional vehicle trips.

Ensures that environmental impacts of traffic, such as safety, noise and air pollution, are properly addressed and mitigated through CEQA.

Addresses state and City goals related to reduction of greenhouse gas (GHG) emissions, and is consistent with City's Climate Action Plan.

WHAT IS VEHICLES MILES TRAVELED (VMT)?

VMT is a measure of the number of miles driven in a car. It is calculated by tallying the total number of miles driven (amount of trips times the length of the trip).