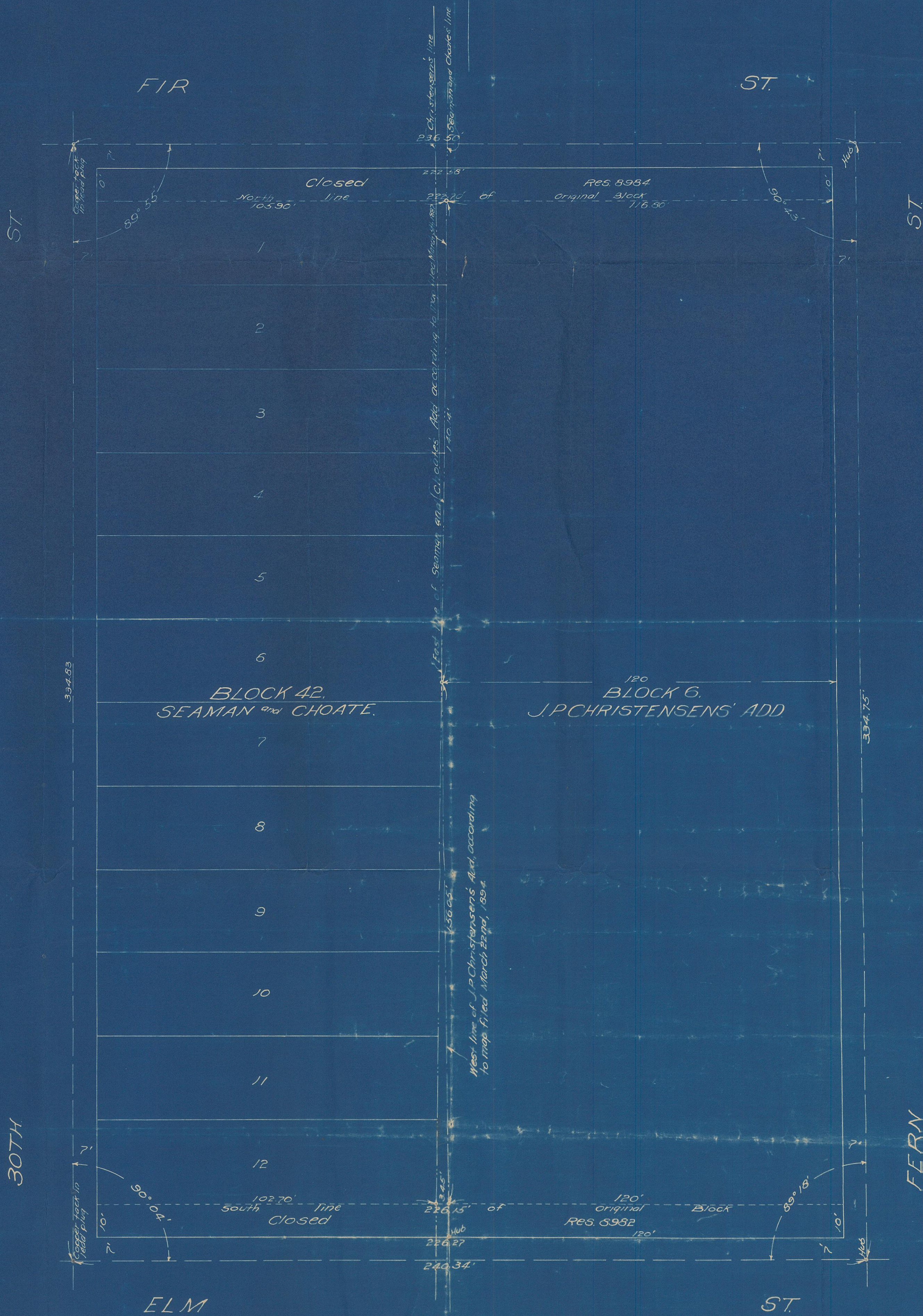


MAP

of
BLOCK 6, J.P. CHRISTENSEN'S ADDITION
and
BLOCK 42, SEAMAN and CHOATE'S ADDITION
SAN DIEGO, CALIFORNIA.

Scale: 1 inch = 20 ft.



Filed at the request of _____
at _____ minutes past _____ o'clock
this _____ day of _____ A.D. 1922.

County Recorder, San Diego County, California.
By _____ Deputy.

Surveyed November 15th, 1922.

W. M. Ramsey
Licensed Surveyor.



(See 360-L)
at 113-7