



**College Area Community
Plan Update:
Existing Conditions Maps
Vision Statement & Guiding Principles**

Planning Department

College Area CPU –Advisory Committee – April 22, 2020

5:30pm to 6:30pm – Virtual Zoom Meeting – Nathen Causman, Associate Planner

1. Recap and Plan Update Summer Schedule
2. Existing Conditions Maps for Community Atlas – initial comments and feedback from Committee
- ~~3. CACC Report – 7 Visions – MOVED TO MAY 20, 2020~~
- ~~4. Vision Statement – MOVED TO MAY 20, 2020~~
- ~~5. Guiding Principles – MOVED TO MAY 20, 2020~~

WHY DO WE UPDATE THE COMMUNITY PLAN?

- 1. Sets community vision for growth & development consistent with the General Plan and the Climate Action Plan**
- 2. Identifies infrastructure and public facilities needs**
- 3. Provides framework for improved mobility**
- 4. Sets design guidelines that enhance community's sense of identity & place**
- 5. Process provides a forum for public participation in the planning process**

Draft College Area CPU Summer Schedule



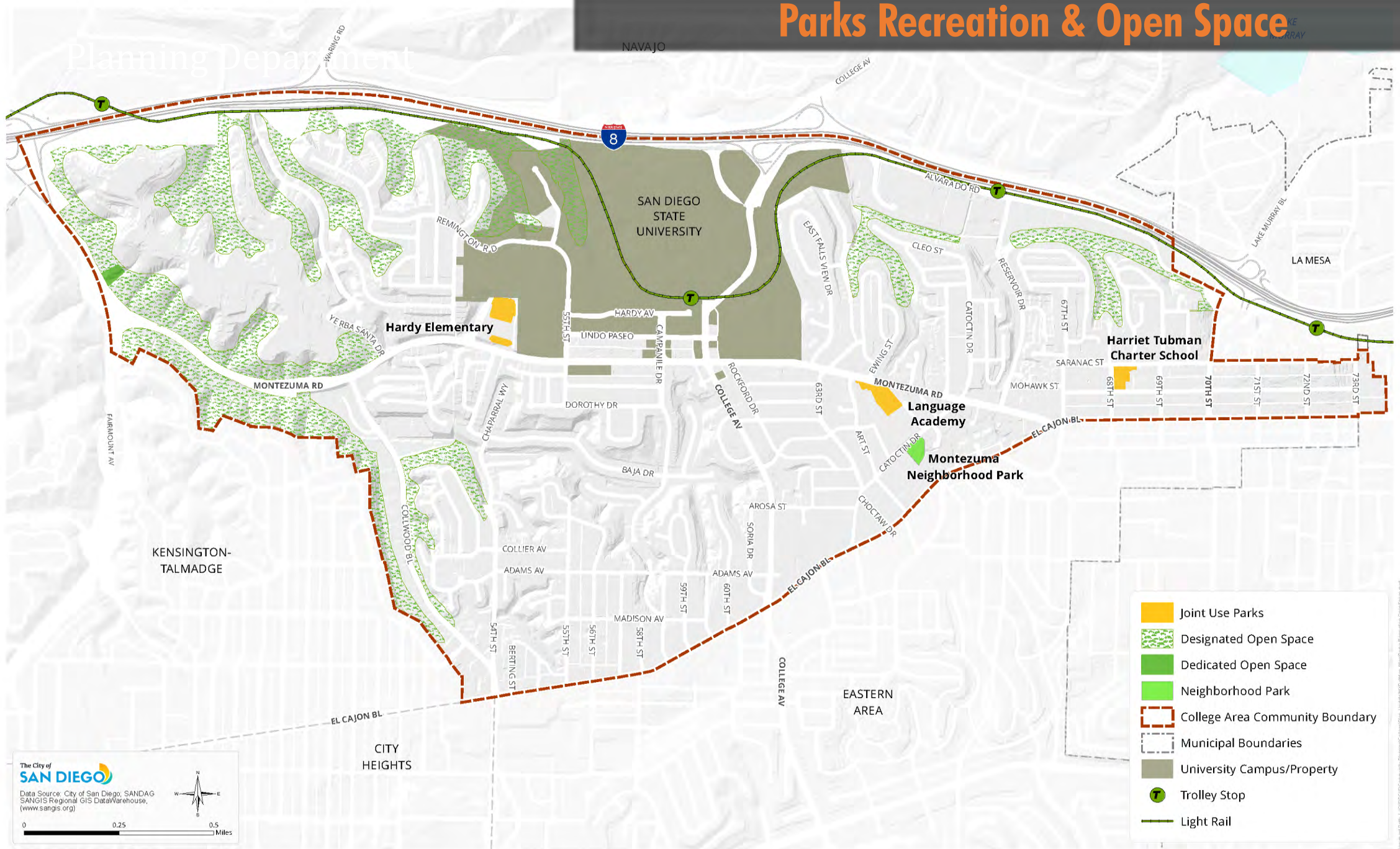
DRAFT Existing Conditions Maps

Parks & Recreation

Parks Recreation & Open Space

Planning Department

NAVAJO



The City of
SAN DIEGO

Data Source: City of San Diego, SANDAG
SANGIS Regional GIS Data Warehouse,
(www.sangis.org)

0 0.25 0.5
Miles

- Joint Use Parks
- Designated Open Space
- Dedicated Open Space
- Neighborhood Park
- College Area Community Boundary
- Municipal Boundaries
- University Campus/Property
- Trolley Stop
- Light Rail

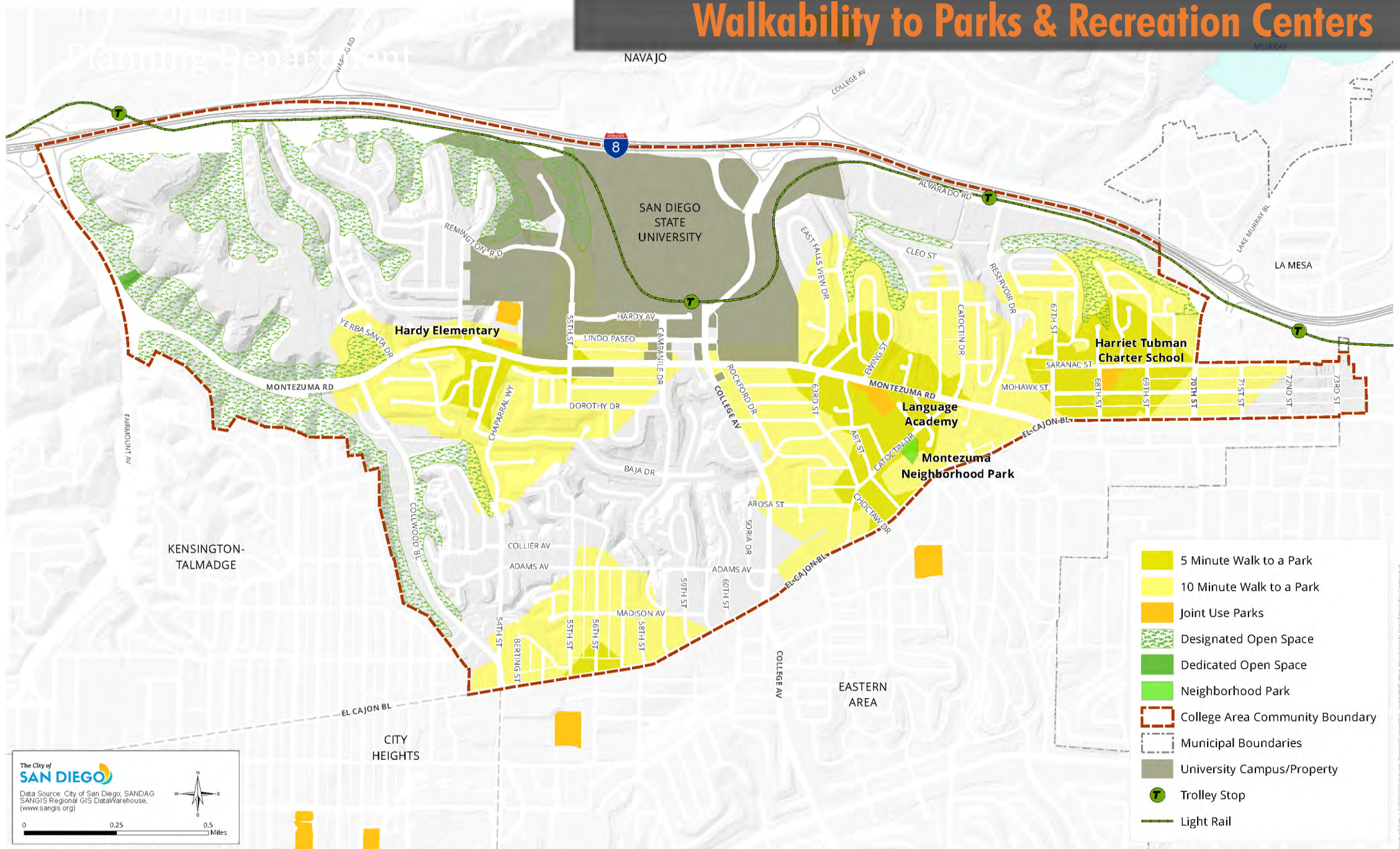
Downloaded from L:\GIS\GISData\Community Planning\CollegeArea_LandscapeMap.mxd, Release 10.1.1.1, 10/1/2010 10:10:10 AM

Walkability to Parks & Recreation Centers

Planning Department

NAVAJO

MURRAY

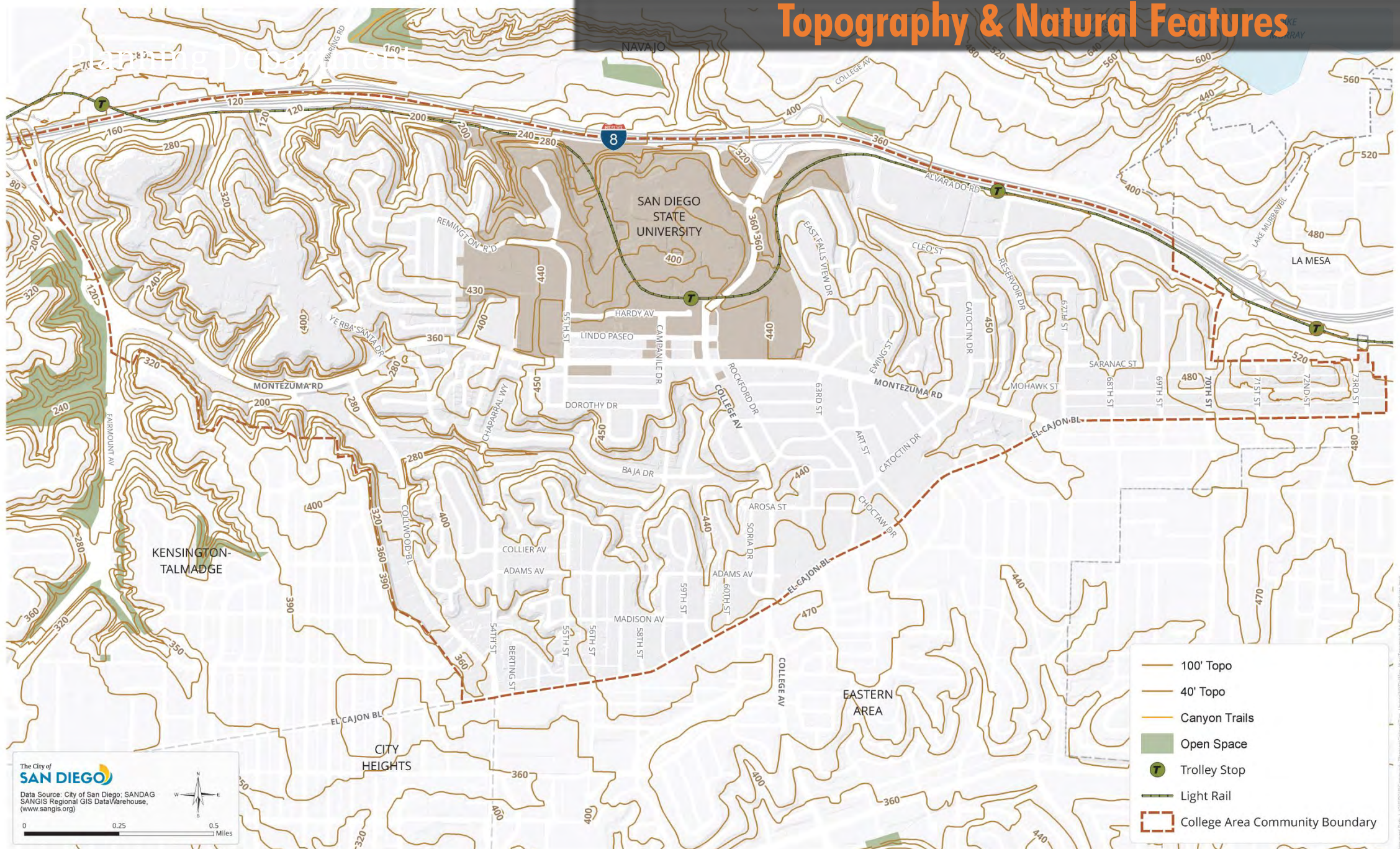


- 5 Minute Walk to a Park
- 10 Minute Walk to a Park
- Joint Use Parks
- Designated Open Space
- Dedicated Open Space
- Neighborhood Park
- College Area Community Boundary
- Municipal Boundaries
- University Campus/Property
- Trolley Stop
- Light Rail

DRAFT Existing Conditions Maps

Sustainability, Conservation, & Natural Features

Topography & Natural Features



The City of **SAN DIEGO**

Data Source: City of San Diego: SANDAG
SANGIS Regional GIS Data Warehouse,
(www.sangis.org)

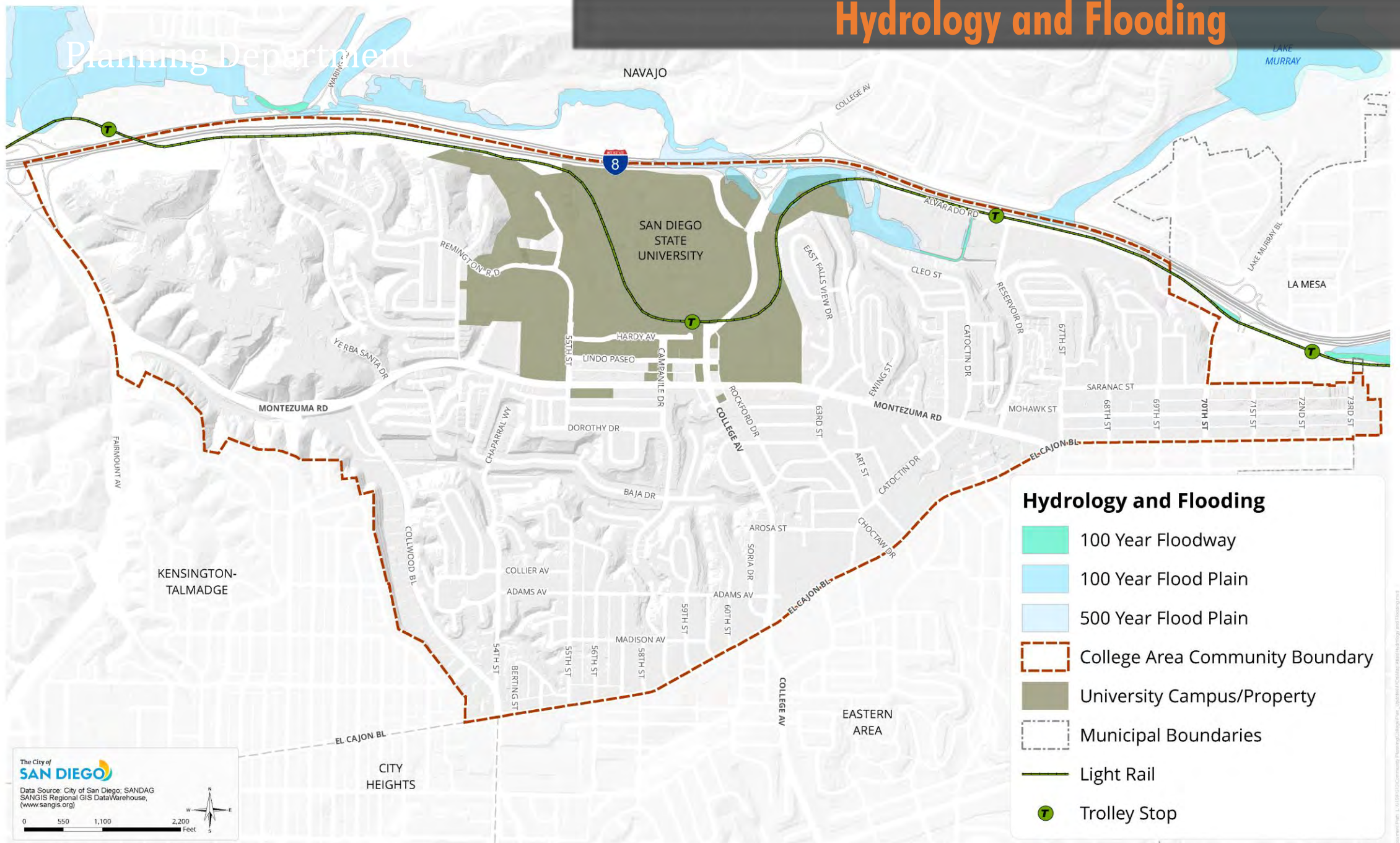
0 0.25 0.5 Miles

W N E S

- 100' Topo
- 40' Topo
- Canyon Trails
- Open Space
- Trolley Stop
- Light Rail
- College Area Community Boundary

Hydrology and Flooding

Planning Department



Hydrology and Flooding

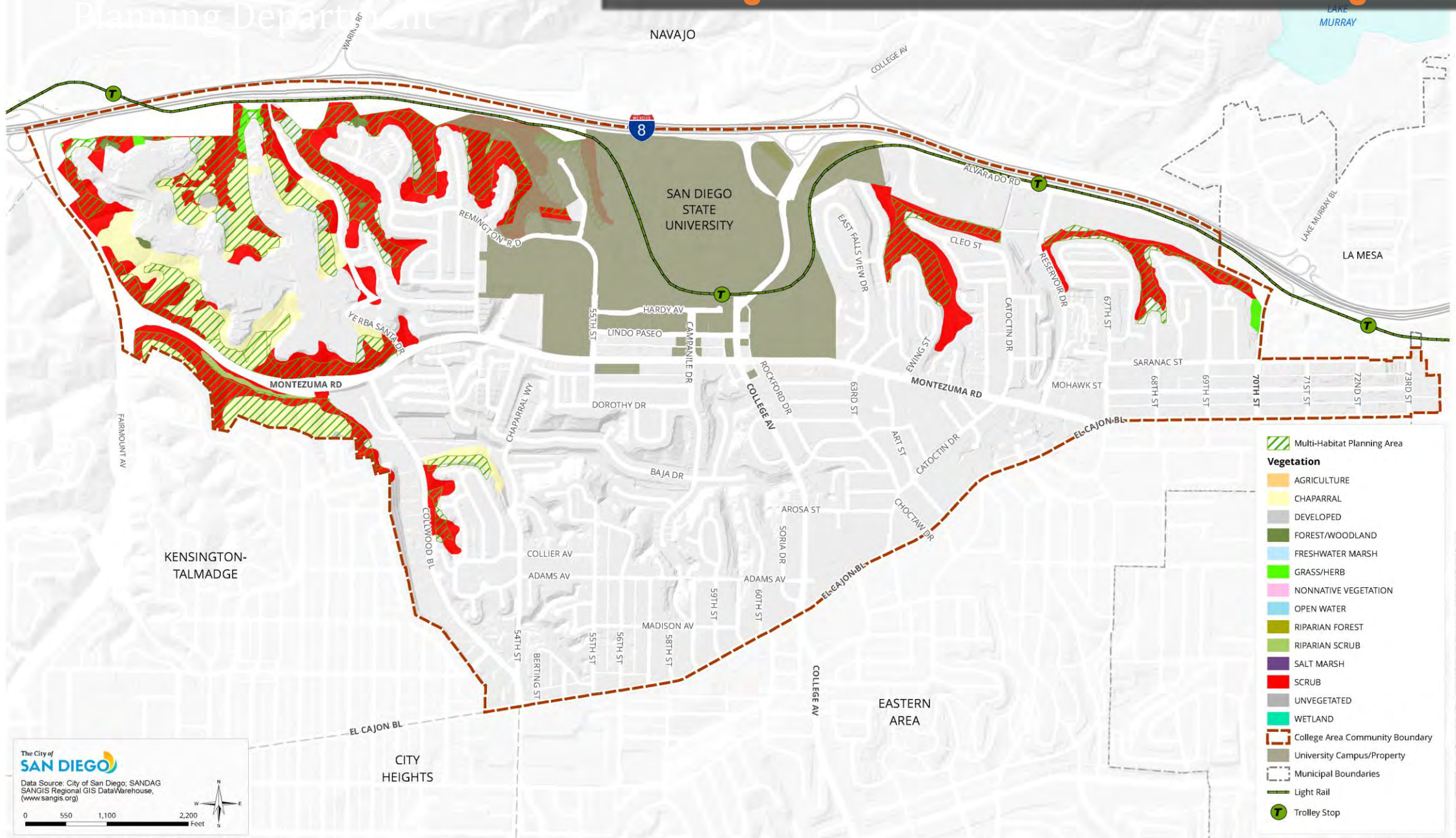
- 100 Year Floodway
- 100 Year Flood Plain
- 500 Year Flood Plain
- College Area Community Boundary
- University Campus/Property
- Municipal Boundaries
- Light Rail
- Trolley Stop

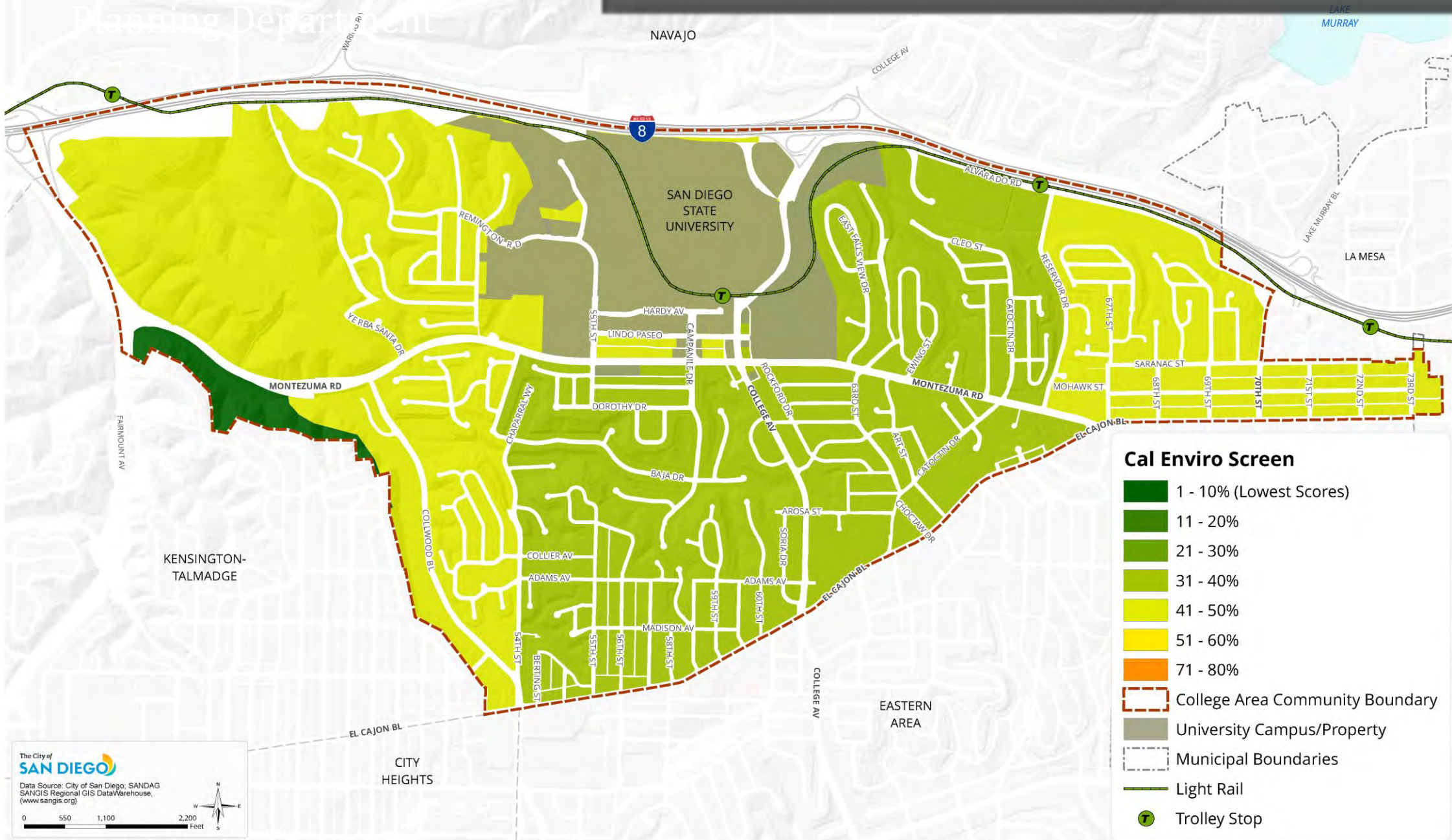
The City of
SAN DIEGO

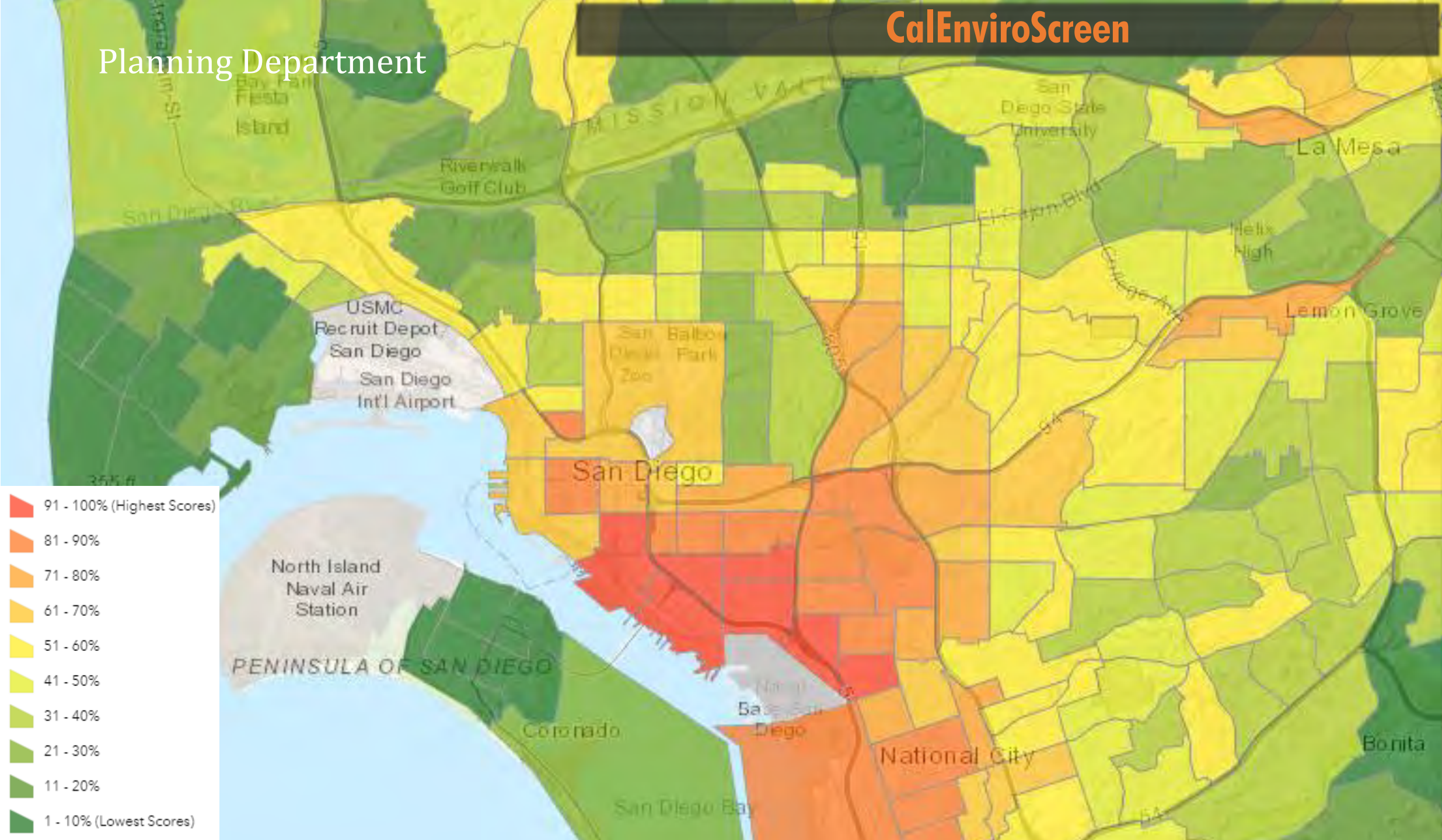
Data Source: City of San Diego; SANDAG
SANGIS Regional GIS Data Warehouse,
(www.sangis.org)

0 550 1,100 2,200 Feet









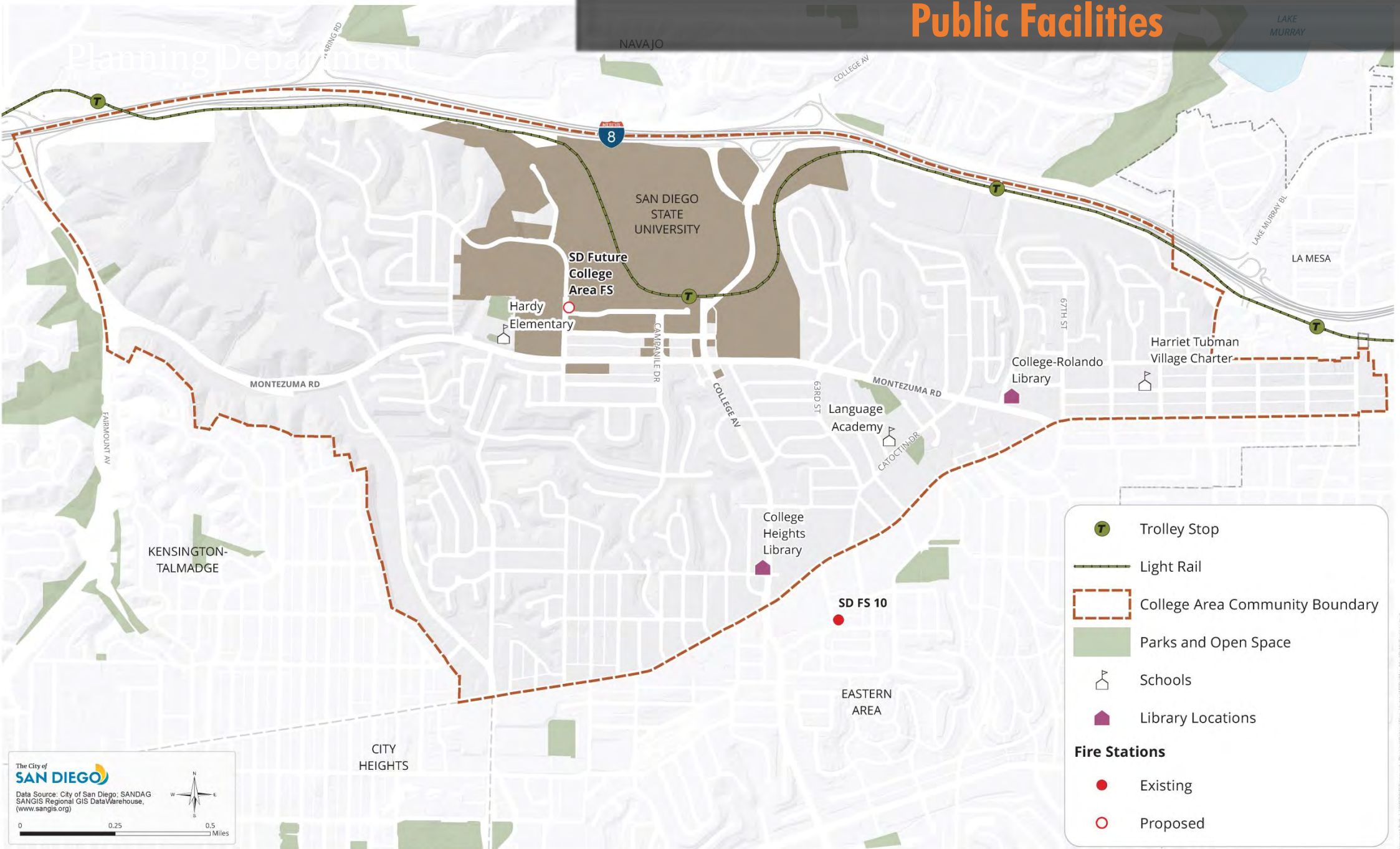
DRAFT Existing Conditions Maps

Infrastructure and Public Facilities

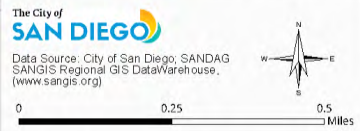
NAVAJO **Public Facilities** LAKE MURRAY



Planning Department



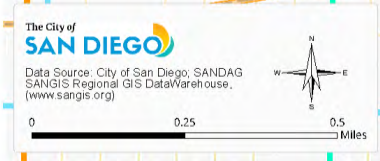
NAVAJO



DRAFT Existing Conditions Maps

Mobility

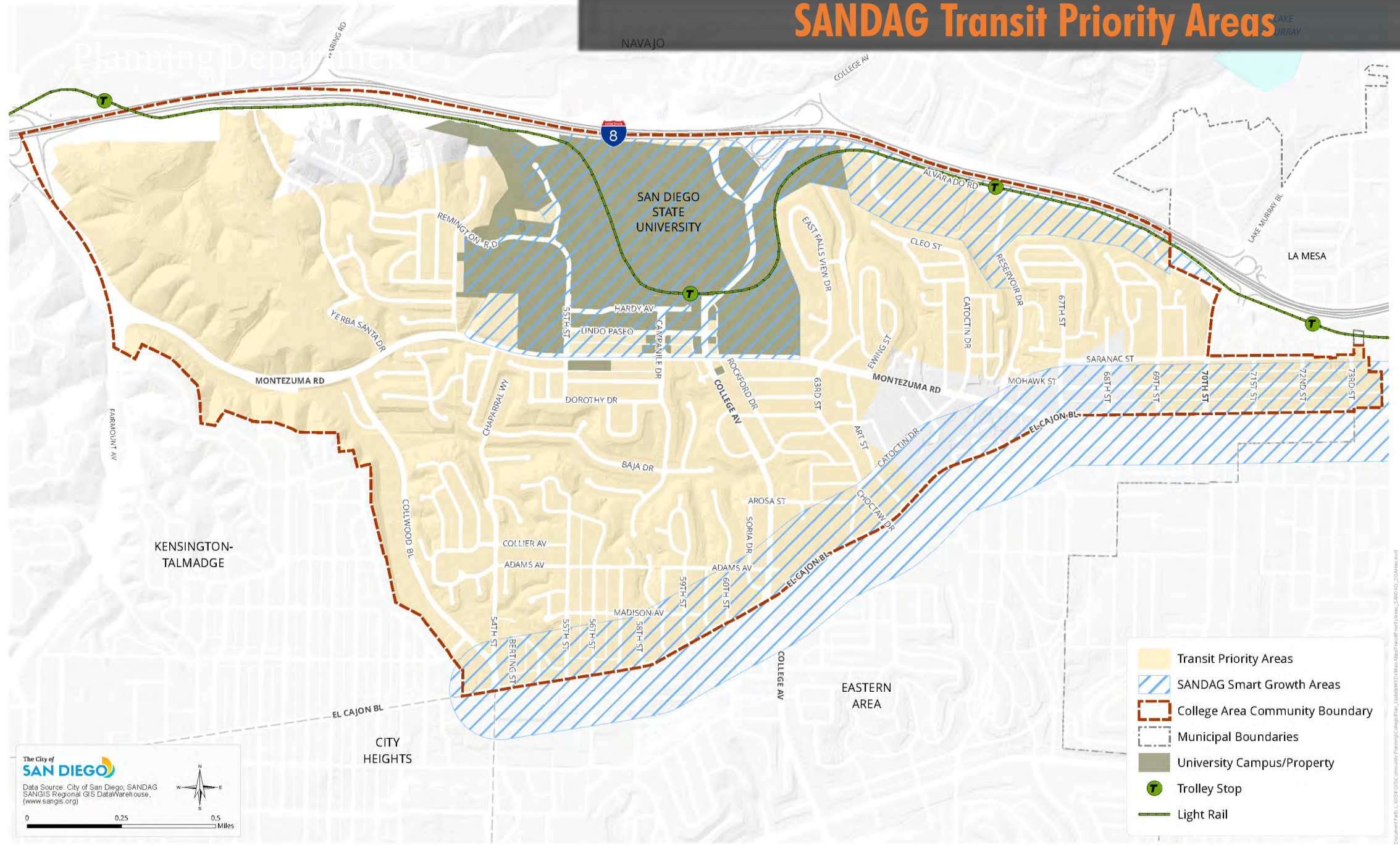
Street Classification



SANDAG Transit Priority Areas

NAVAJO

Planning Department



- Transit Priority Areas
- SANDAG Smart Growth Areas
- College Area Community Boundary
- Municipal Boundaries
- University Campus/Property
- Trolley Stop
- Light Rail

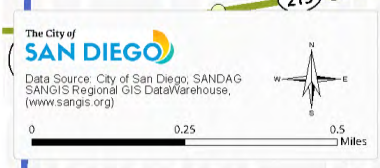
The City of
SAN DIEGO

Data Source: City of San Diego; SANDAG
SANGIS Regional GIS Data Warehouse,
(www.sangis.org)

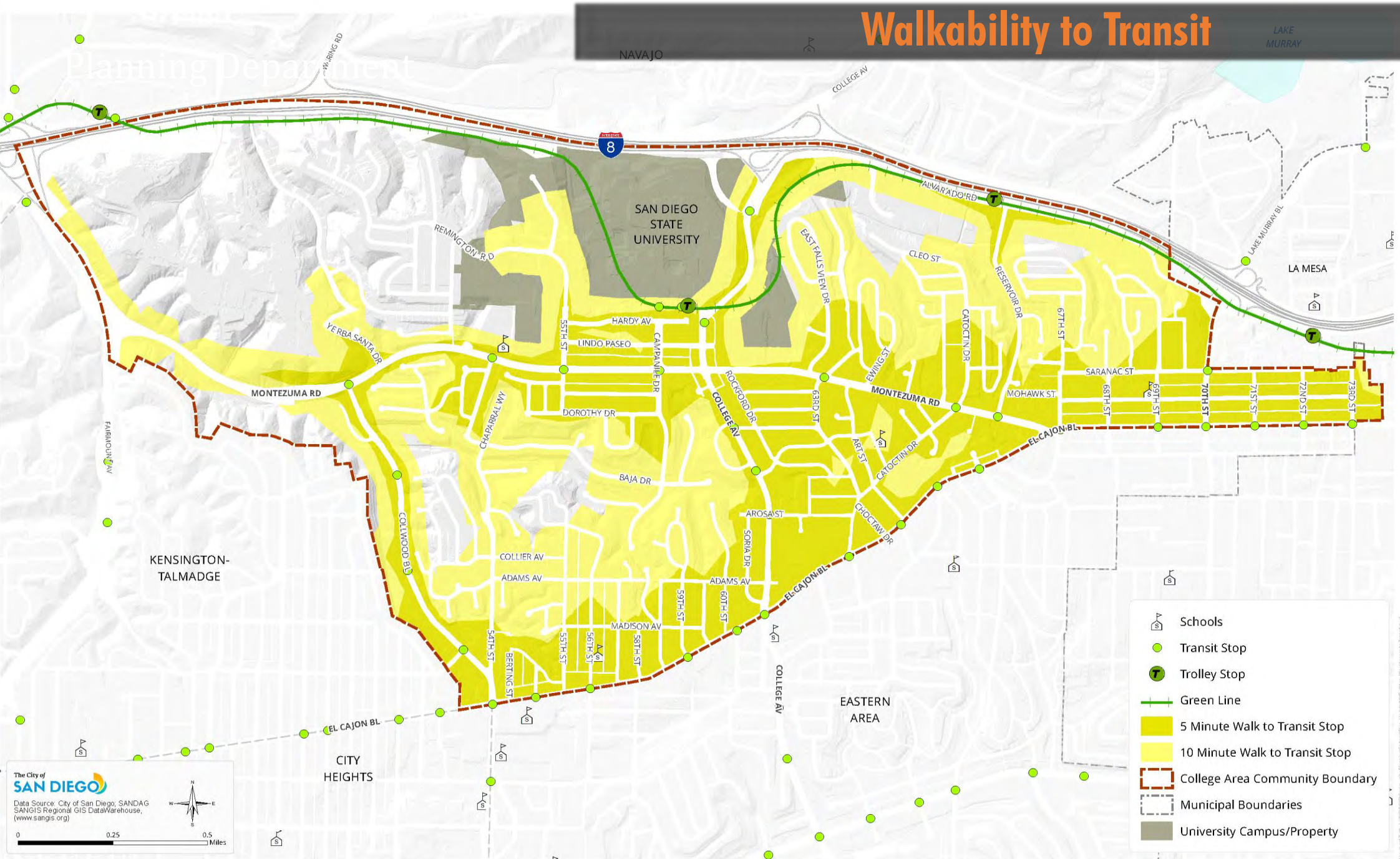
0 0.25 0.5 Miles

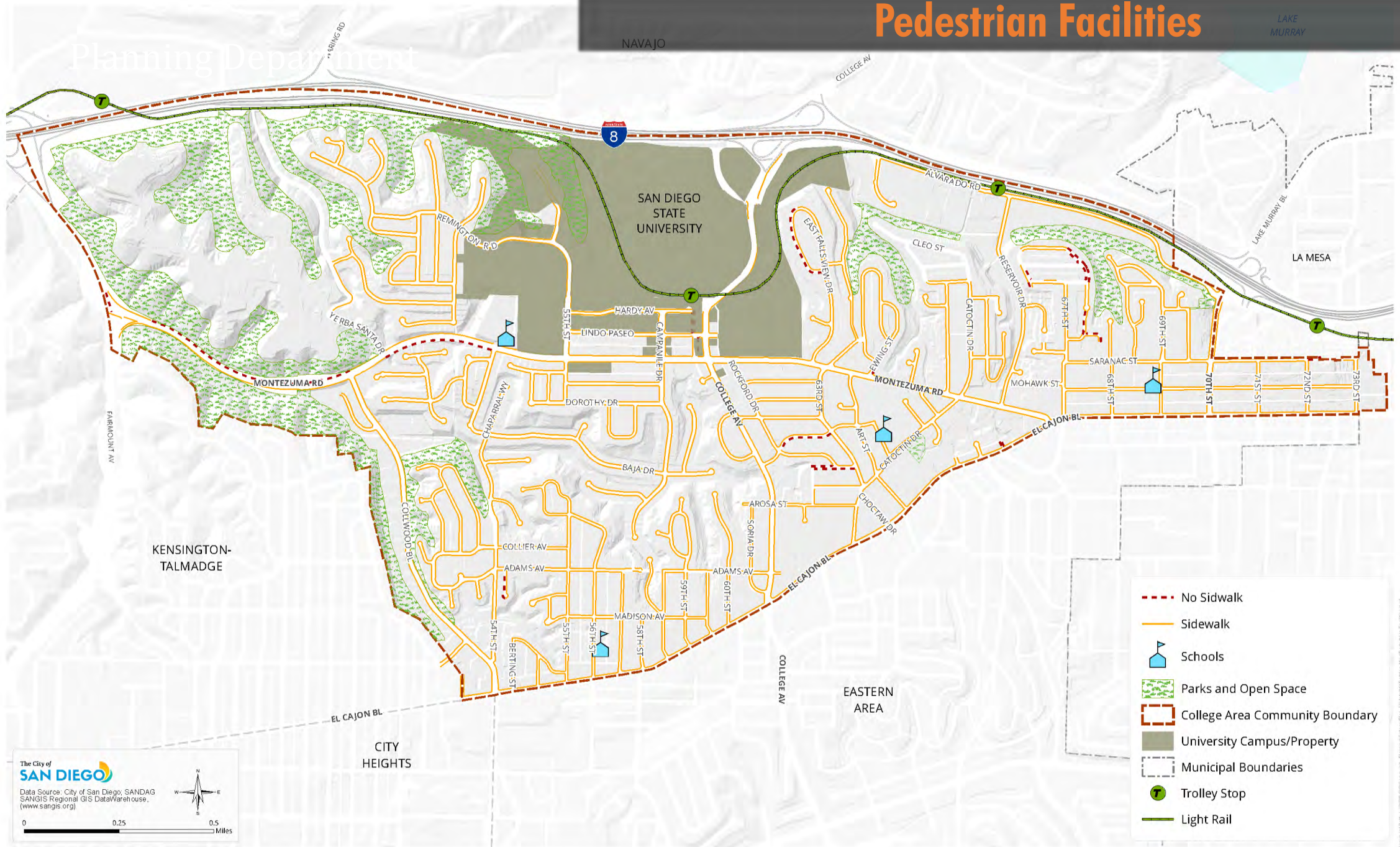
Document Path: L:\GIS\GISData\Community Planning\College Area\CollegeAreaMap\CollegeAreaMap.mxd
Document Title: L:\GIS\GISData\Community Planning\College Area\CollegeAreaMap\CollegeAreaMap.mxd
Document Date: 2/24/2014

NAVAJO
Transit Routes
LAKE MURRAY

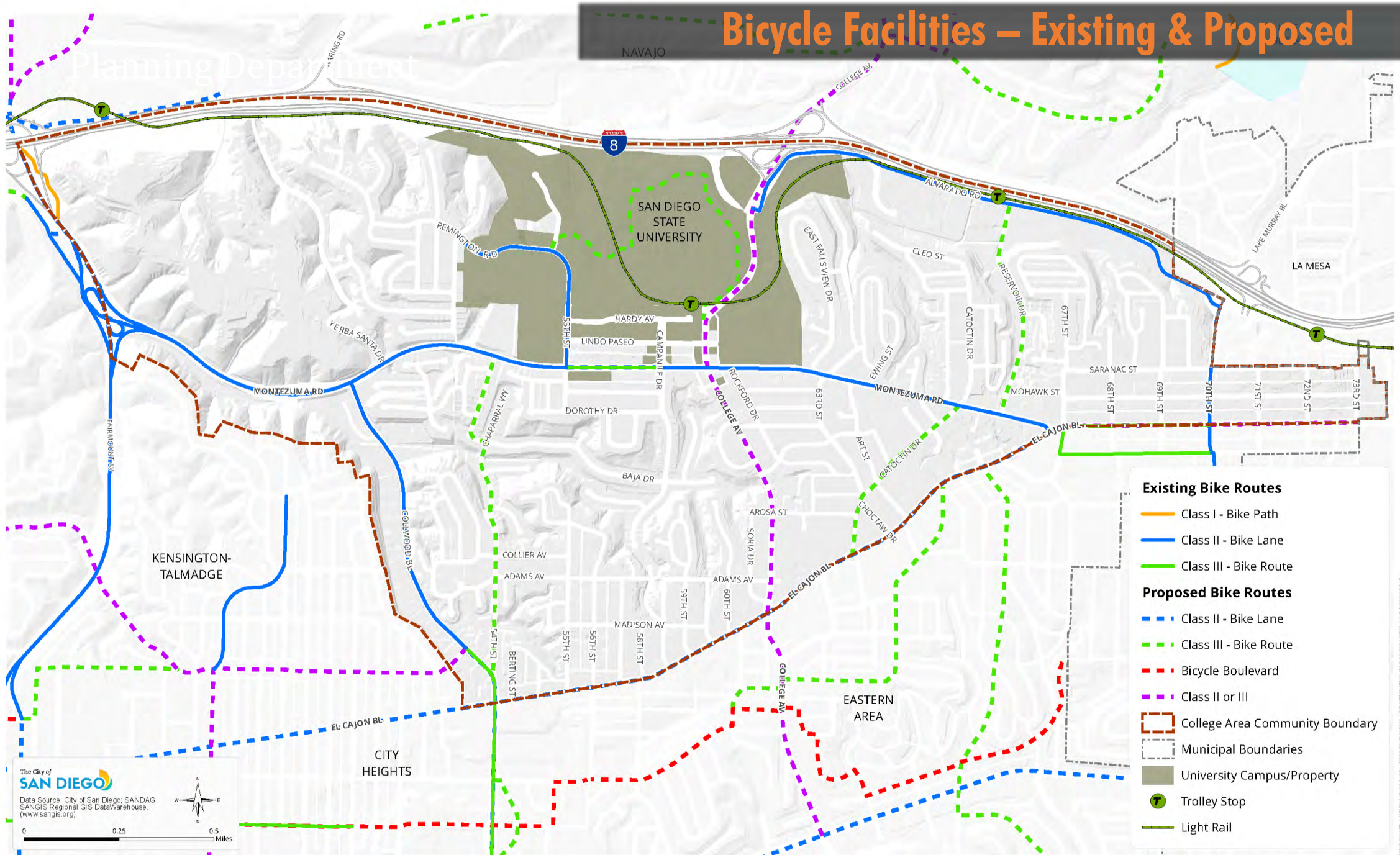


NAVAJO  **Walkability to Transit**  LAKE MURRAY





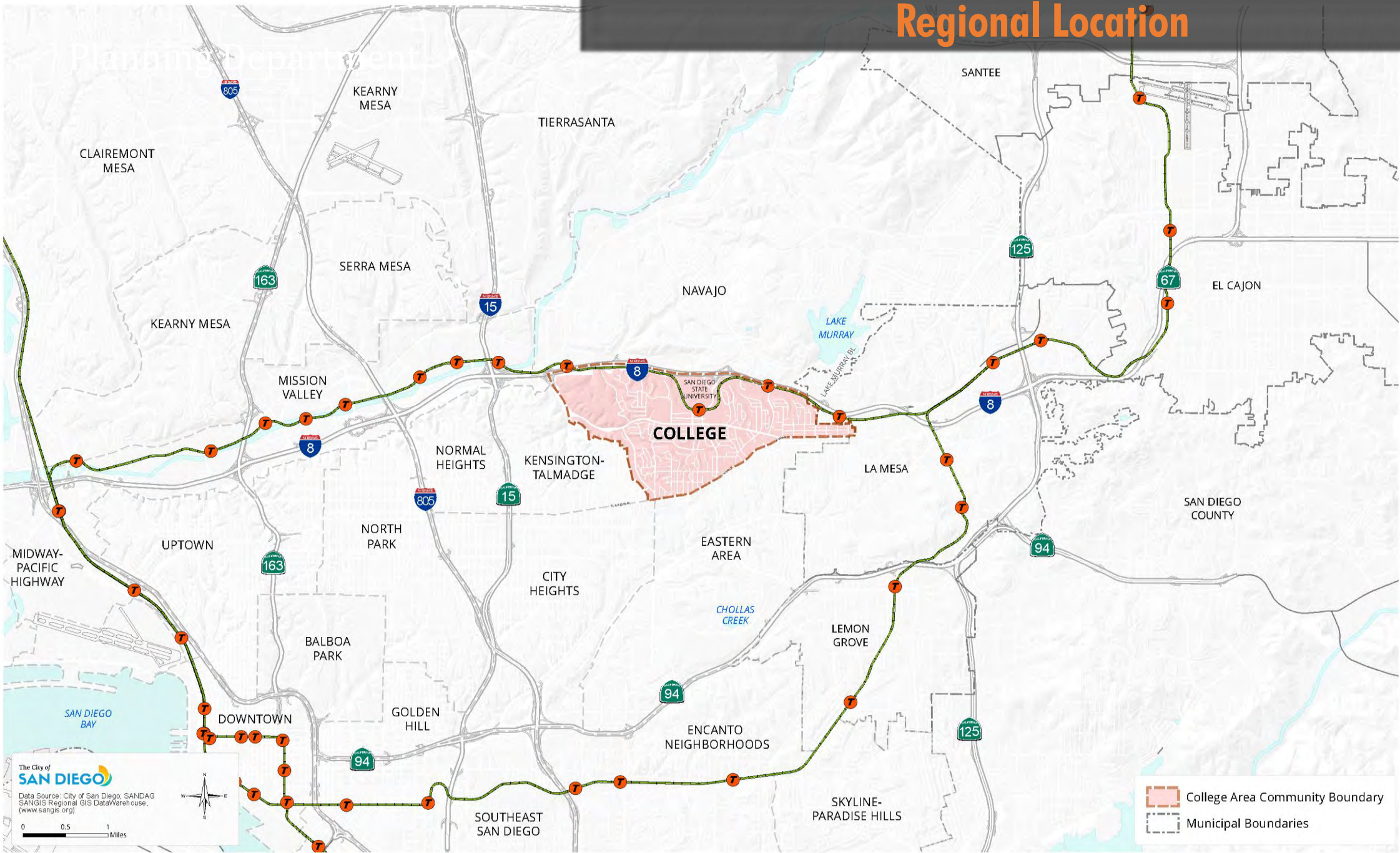
Bicycle Facilities – Existing & Proposed



DRAFT Existing Conditions Maps

Land Use

Regional Location



The City of
SAN DIEGO

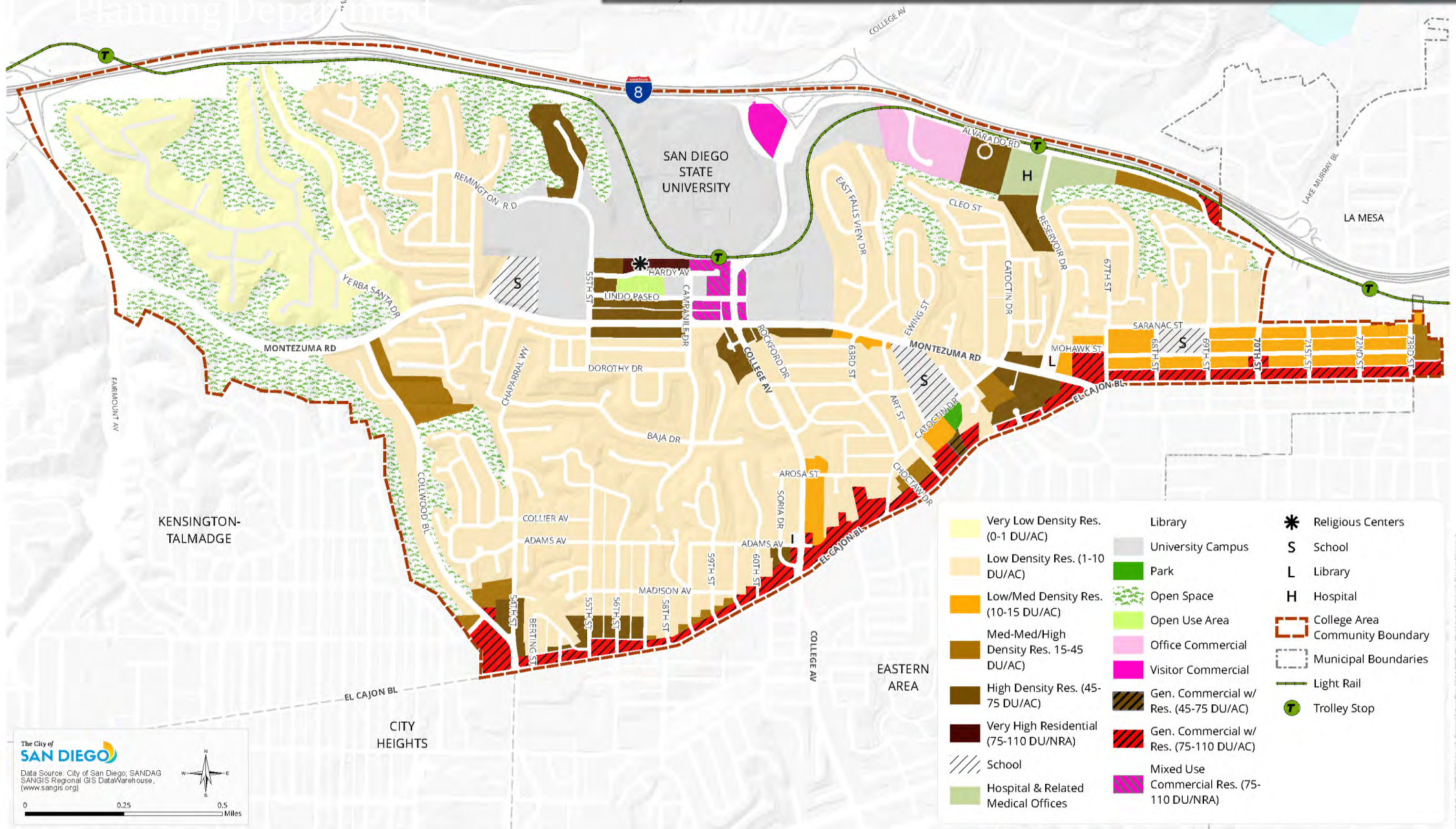
Data Source: City of San Diego, SANDAG
SANGIS Regional GIS Data Warehouse,
(www.sangis.org)



0 0.5 1
Miles

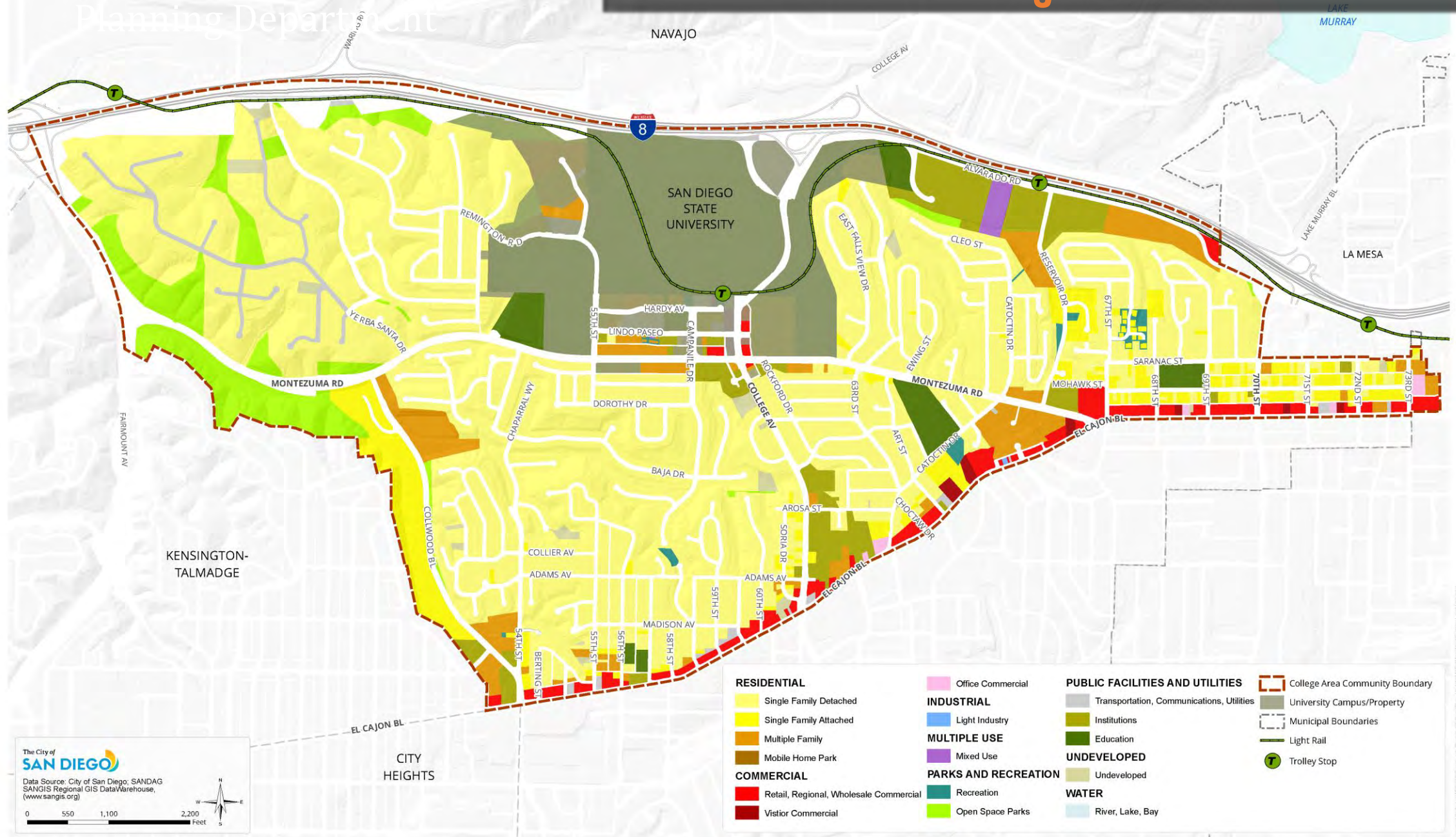
Document Path: L:\GIS\2022\SanDiegoPlanningCollegePlan_Update\GIS\Map_Access\Regional_Location.mxd

Adopted Community Plan Land Uses



Existing Land Uses

Planning Department



College Community Redevelopment Project Subarea



The City of
SAN DIEGO

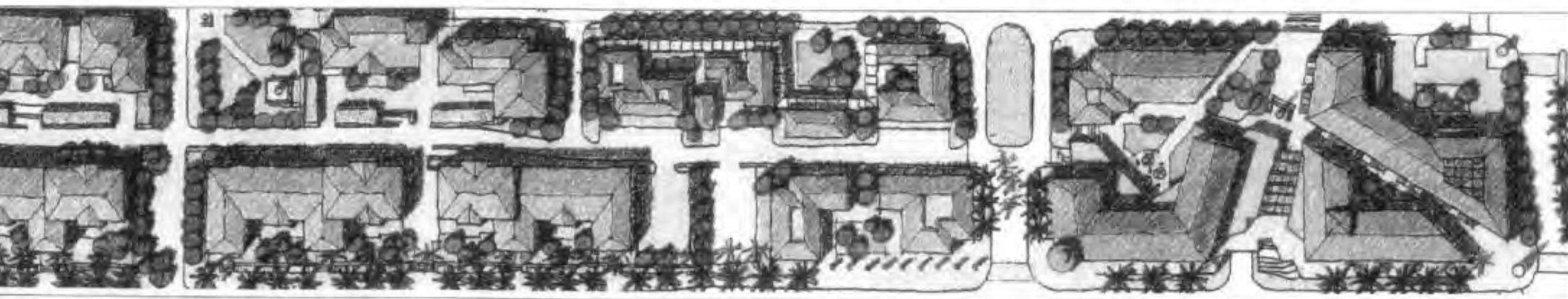
Data Source: City of San Diego; SANDAG
SANGIS Regional GIS DataWarehouse,
(www.sangis.org)



Document Path: L:\Noise-GIS\community planning\college\lan_update\WIND.stw\sp Atlas\Noise Subarea Design Manual_Capitol.mxd

**College
Community
Redevelopment
Project**

CORE SUB-AREA DESIGN MANUAL



City of San Diego



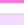
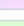
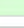






College Community Redevelopment Project Subarea



The City of
SAN DIEGO

Data Source: City of San Diego; SANDAG
SANGIS Regional GIS DataWarehouse,
(www.sangis.org)

Core Sub-Area Land Use

-  High Density Residential
-  Very High Density Residential
-  Mixed-Use Commercial/Residential
-  Sororities
-  Fraternities
-  University Owned Parking Structure
-  Trolley Stop
-  Light Rail
-  College Area Community Boundary
-  Municipal Boundaries
-  University Campus/Property

Document path: L:\NLSieGL\Community Planning\01eglelan_Update\WLD\WLD Atlas\ArcSDE Subarea Design Manual_C4102.mxd

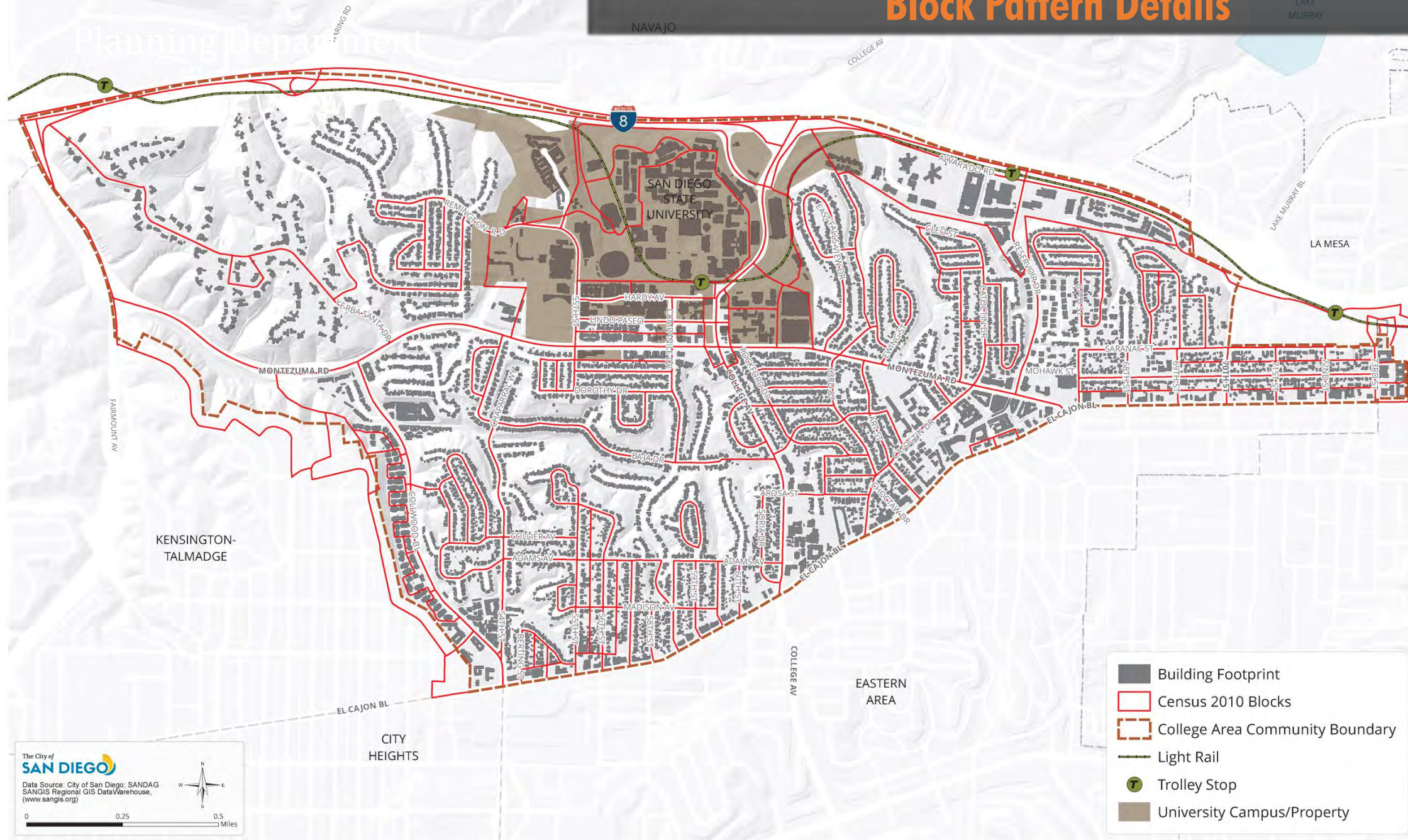
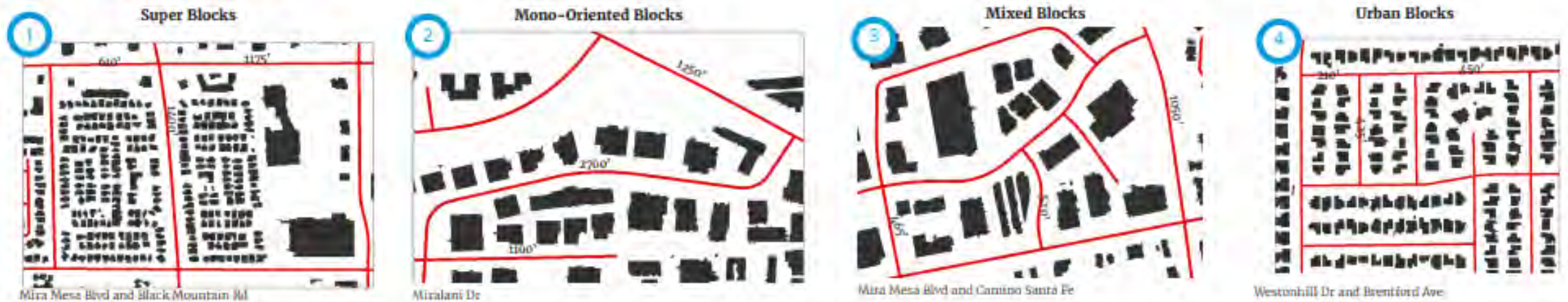
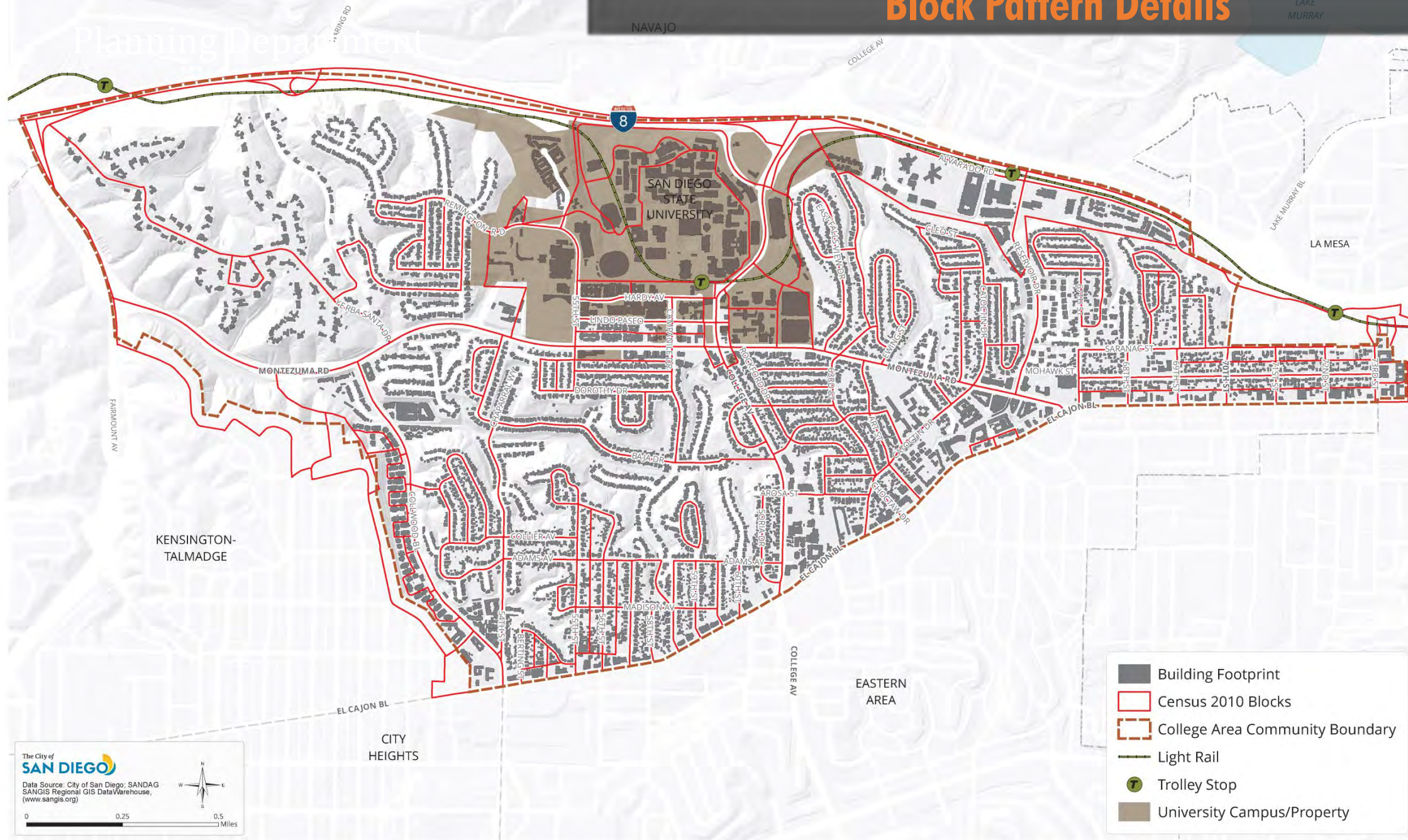
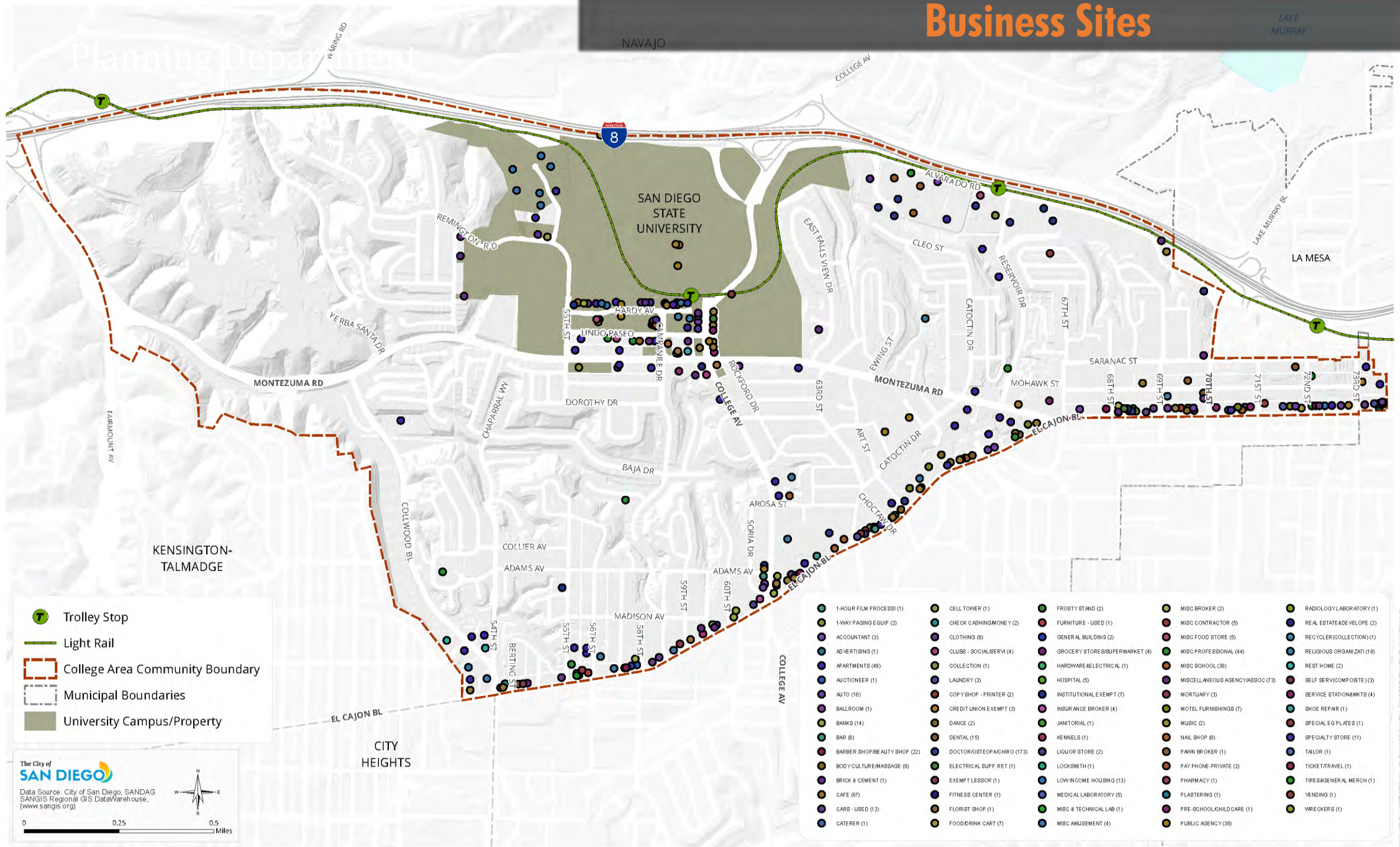
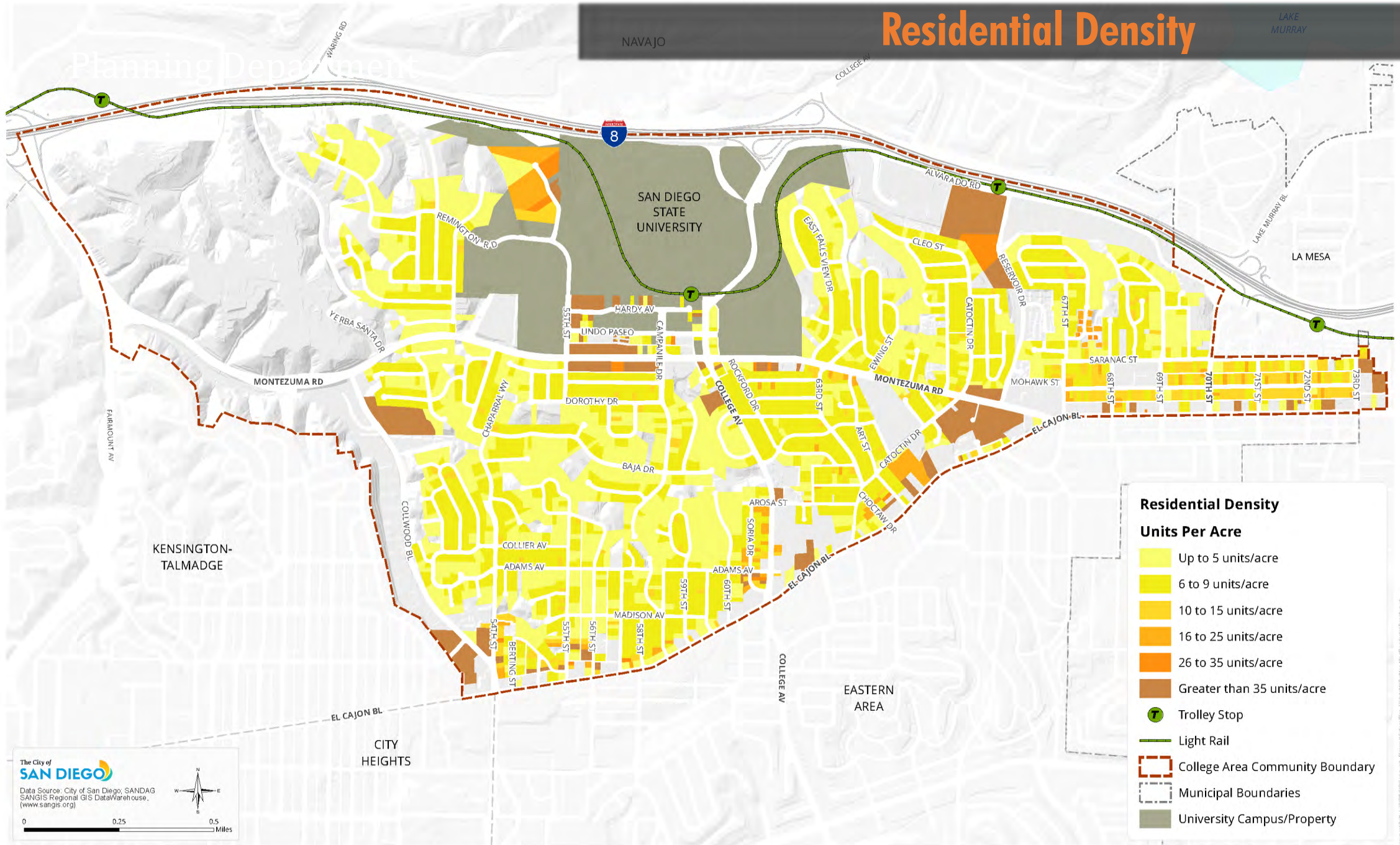


Figure 4-3: Block Pattern Detail





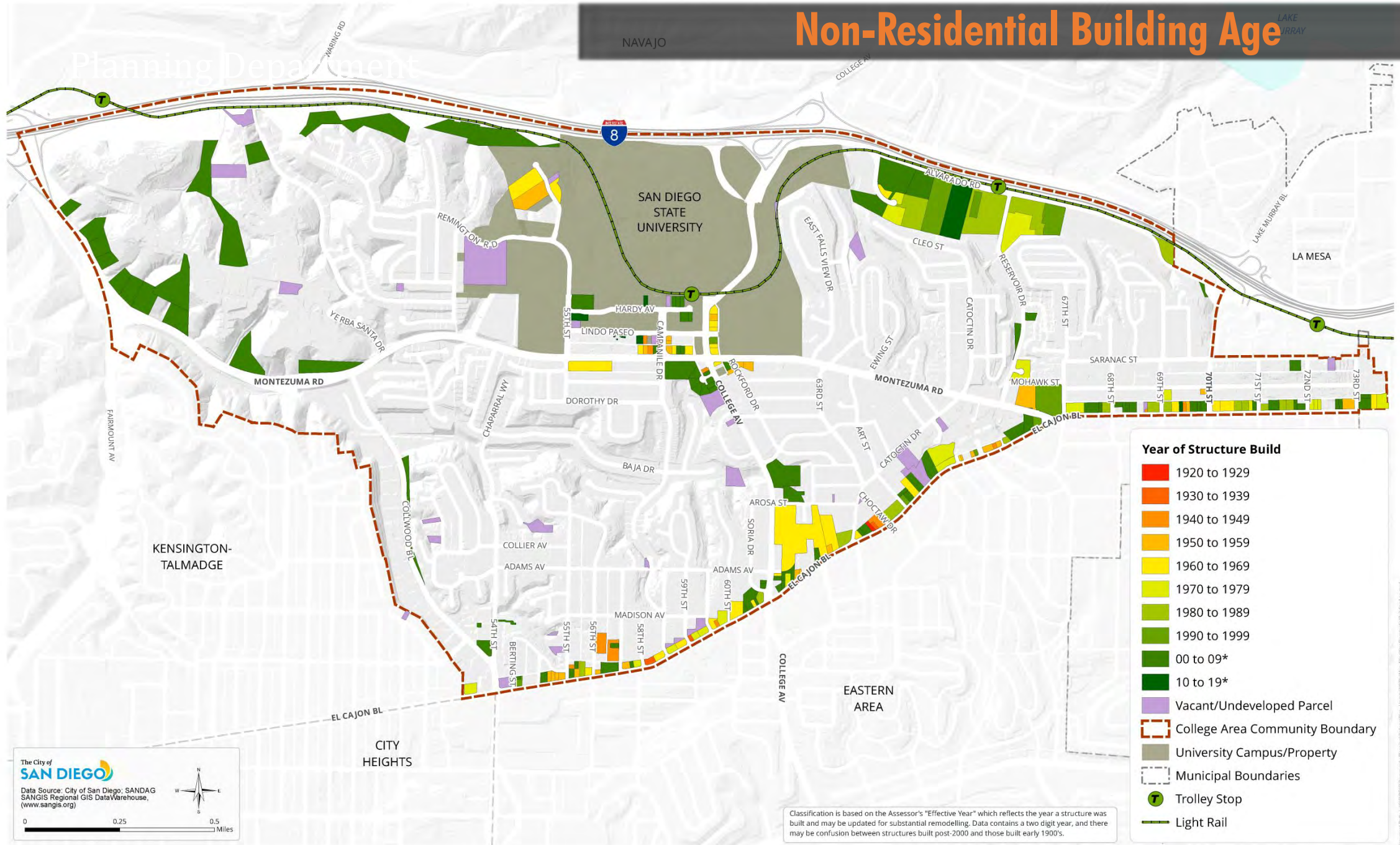




Non-Residential Building Age

NAVAJO

Planning Department

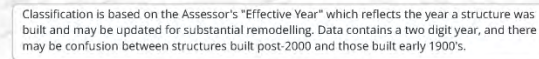


The City of
SAN DIEGO

Data Source: City of San Diego; SANDAG
SANGIS Regional GIS Data Warehouse,
(www.sangis.org)

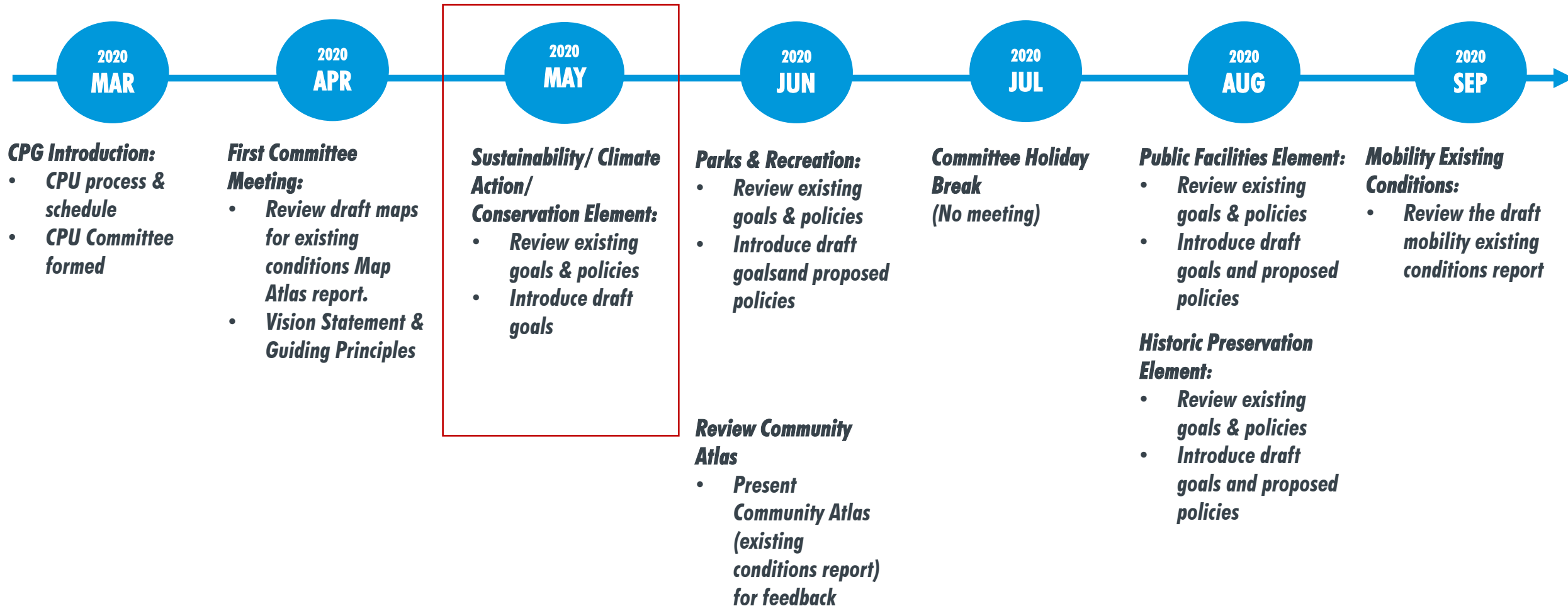


0 0.25 0.5
Miles





Draft College Area CPU Schedule





Nathen Causman, Associate Planner

Email: NCausman@san Diego.gov

Phone: 619-236-7225



Shannon Mulderig, Associate Planner

Email: SLMulderig@san Diego.gov

Phone: 619-533-3662



Discussion + Questions