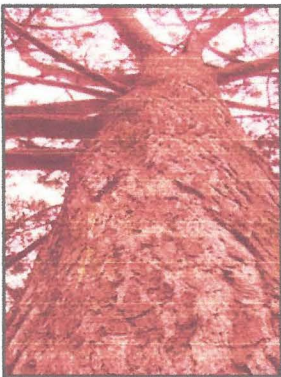




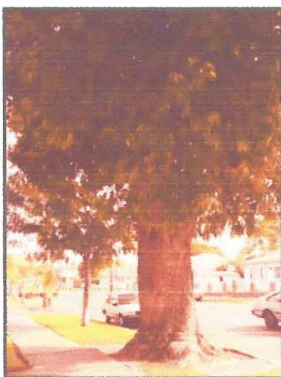
CONSERVE-A-TREE NOMINATION FORM



LANDMARK TREE

Striking or unusual trees with high aesthetic value, features may include:

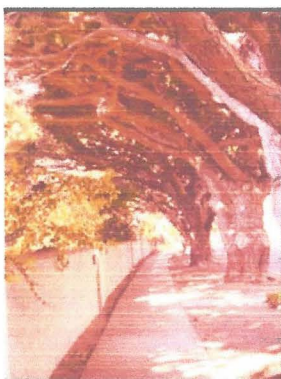
- Large for the species
- Special or unusual form
- Interesting flowers or branching pattern
- Species rare to its location



HERITAGE TREE

Significant for its age or historical value, including:

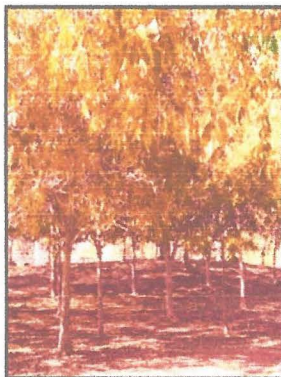
- Trees 50 years or older
- Connected to a historical event, building or district or planted by a historically significant individual



PARKWAY RESOURCE TREE

Groups of trees in public right-of-way, public parking lots or trails:

- Consistent design theme with similar size, shape, health and form
- Trees creating a canopy over a public way



PRESERVATION GROVE

Groups of trees in public-right-of-way, open space, designated environmentally sensitive lands, conservation easement or parkland:

- 6 or more trees with trunks within 100 feet of each other
- Same or similar species and form
- Native, naturalized or endemic and surviving without intervention

Mail completed form to:
Conserve a Tree Nomination
Urban Forestry
City of San Diego Street Div
2781 Caminito Chollas
San Diego, CA 92105

To: **COMMUNITY FOREST ADVISORY BOARD**

Date: 7/10/16

From (your name): Cay Cowie

Organization: Owner of Tree

Address: 3810 Bayside Walk, San Diego 92109

Phone: 602-370-0123

E-mail: caycowie@icloud.com

TYPE OF NOMINATION:

☒ LANDMARK TREE

☒ HERITAGE TREE

☐ PARKWAY RESOURCE TREES

☐ PRESERVATION GROVE

Species: Torrey Pine

Location & Nearest Cross Street: Bayside Walk and

Salem Court

Estimated Height: 50 feet

Estimated Width: trunk 7 foot diameter

Condition: excellant

Estimated Planting Date: 1950

Specific proof of age may be difficult to determine, but estimates based on the age of surrounding development or the size of tree are adequate.

HISTORY AND NOTES

Include any history or notes you have about this tree or these trees

This is a beautiful specimen of a Torrey Pine. It is a magnificent landmark. People on the beach enjoy its shade. Residents use it to navigate their way home as it is so large they can see it from far away. Most visitors comment on its beauty as they pass by either walking or biking on the boardwalk.

It was planted by a renter of the property. A seedling was given to a person as a gift if one gave a donation to one of the Balboa museums. The renter came home from the event with the seedling and planted it. The tree thrives and has become the beauty it is now.

It is also the home for waterfowl. They nest in it. It is a joy to watch them fly into the tree.

SEE ATTACHED PICTURES

Please attach photo here

For the above tree(s) to be considered for designation as protected, this request has been forwarded to Street Division. The tree(s) will be inspected by the Street Division Urban Forester to make sure all designation criteria are met. If they meet all criteria, the request will be forwarded to the Community Forest Advisory Board (CFAB) for evaluation and possibly protected status.

Requested Action: Street Division requests that a Community Forest Advisory Board Arborist evaluate the nominated tree for confirmation. If the nomination is approved by CFAB, the tree will be added to the City of San Diego's Tree Protection Status as described in the Tree Protection Policy adopted by City Council in May, 2005.

Please mail completed form to: Conserve a Tree Nomination
Attn: Drew Potocki, Urban Forestry
City of San Diego Street Division
2781 Caminito Chollas
San Diego, CA 92105

Or you can FAX the form to: 619 527-7534,
Attn: Drew Potocki

CLEAR FORM







