

California Pacific International Exposition

PICTORIAL



San Diego, California

1935-6

FRANK E. BROWN

California Pacific International Exposition

PICTORIAL



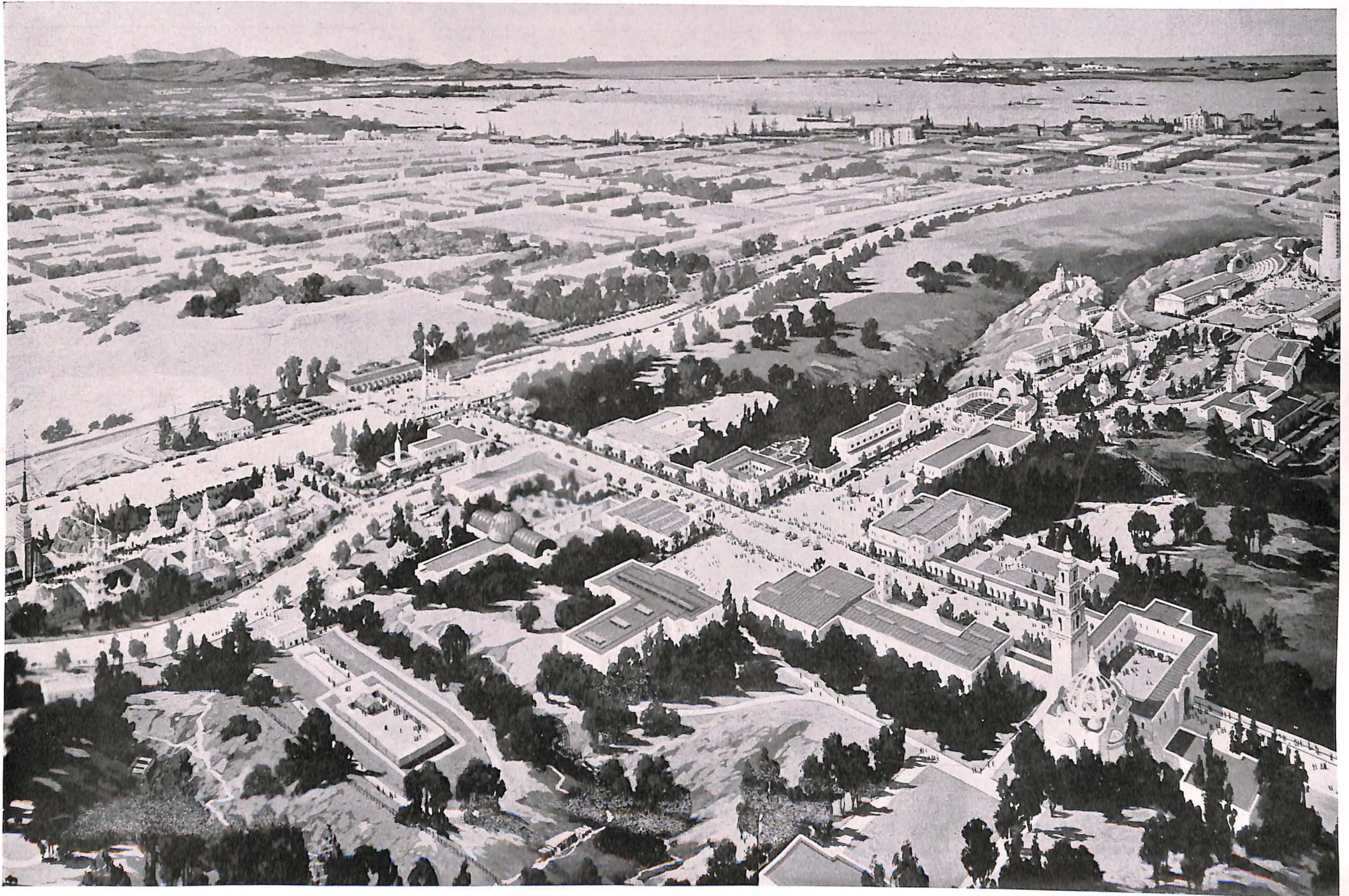
A SPARKLING GEM in a gorgeous emerald setting, the California Pacific International Exposition, in San Diego's beautiful Balboa park, offers a rich pageant depicting the romantic and inspiring story of man's achievements through the ages.

Exhibits of Art, Science, Industry, Commerce and Agriculture, housed in eye-pleasing buildings designed in Spanish Renaissance style, combine with the thrills of a magnificent Midway to provide interesting diversion to all who visit San Diego's Exposition.

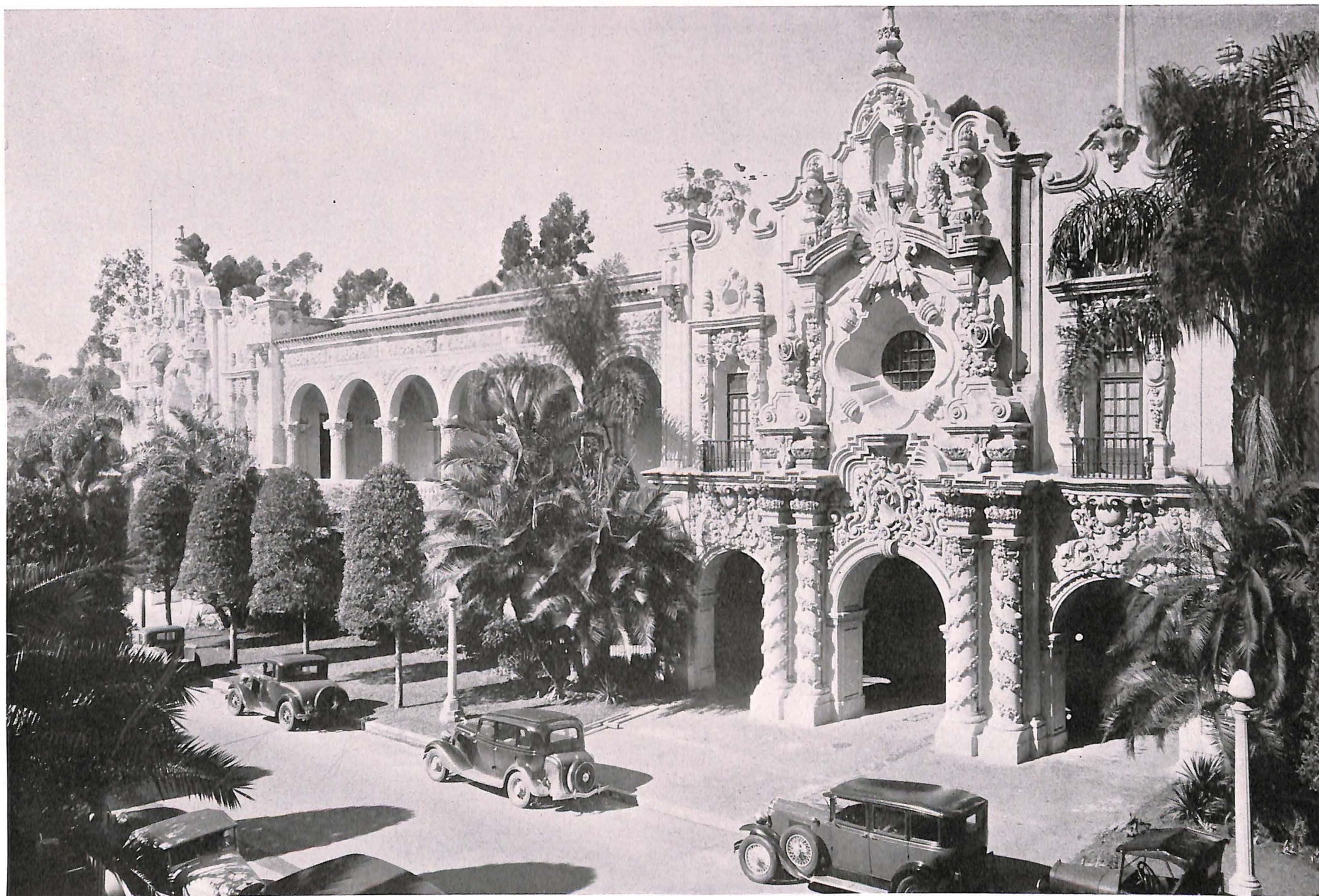
In this booklet are unfolded pictorially the myriad wonders of man's progress—from the Gold Gulch, a typical mining camp of '49; the Spanish Village, reproduced to portray the Golden Age of Spain; and exhibits of primitive life to the exhibits in the huge palaces of Science, Fine Arts, Travel and Transportation and Varied Industries—all elaborately and colorfully displayed in a hundred massive structures.

All kinds of amusements—thousands of interesting exhibits—music—the rare pattern of the world's achievements—a living panorama of life and progress—all in a setting world-famed for its verdant beauty.

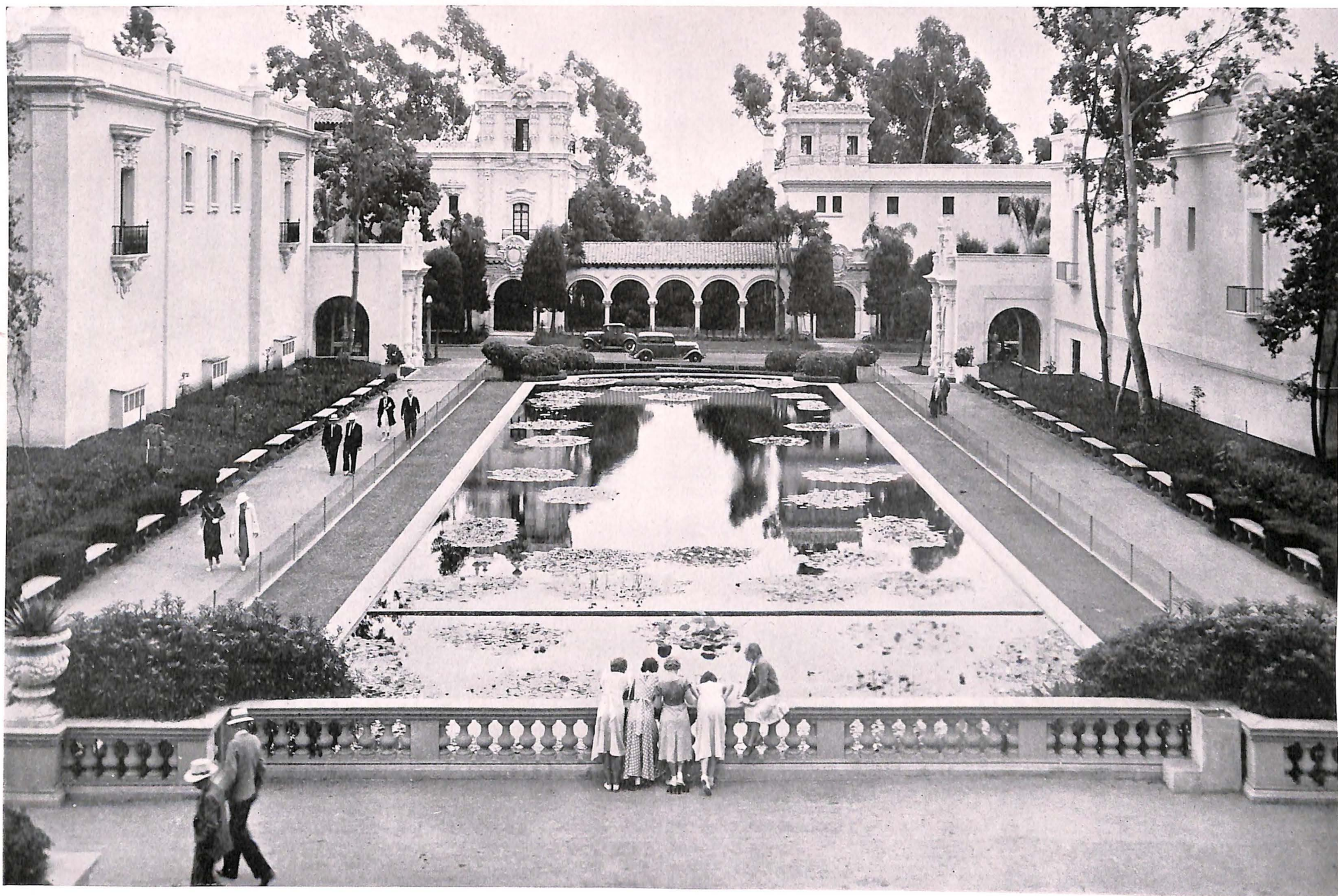
San Diego . . . Nineteen Hundred Thirty Five-Six



THE CALIFORNIA PACIFIC INTERNATIONAL EXPOSITION VIEWED FROM MID-AIR



PALACE OF FOODS AND BEVERAGES



THE LAGOON...PALACE OF MODERN HOMES AND PALACE OF HOSPITALITY IN THE BACKGROUND



14812.3
ASERRET
STUDIO

SPRECKELS OPEN AIR ORGAN

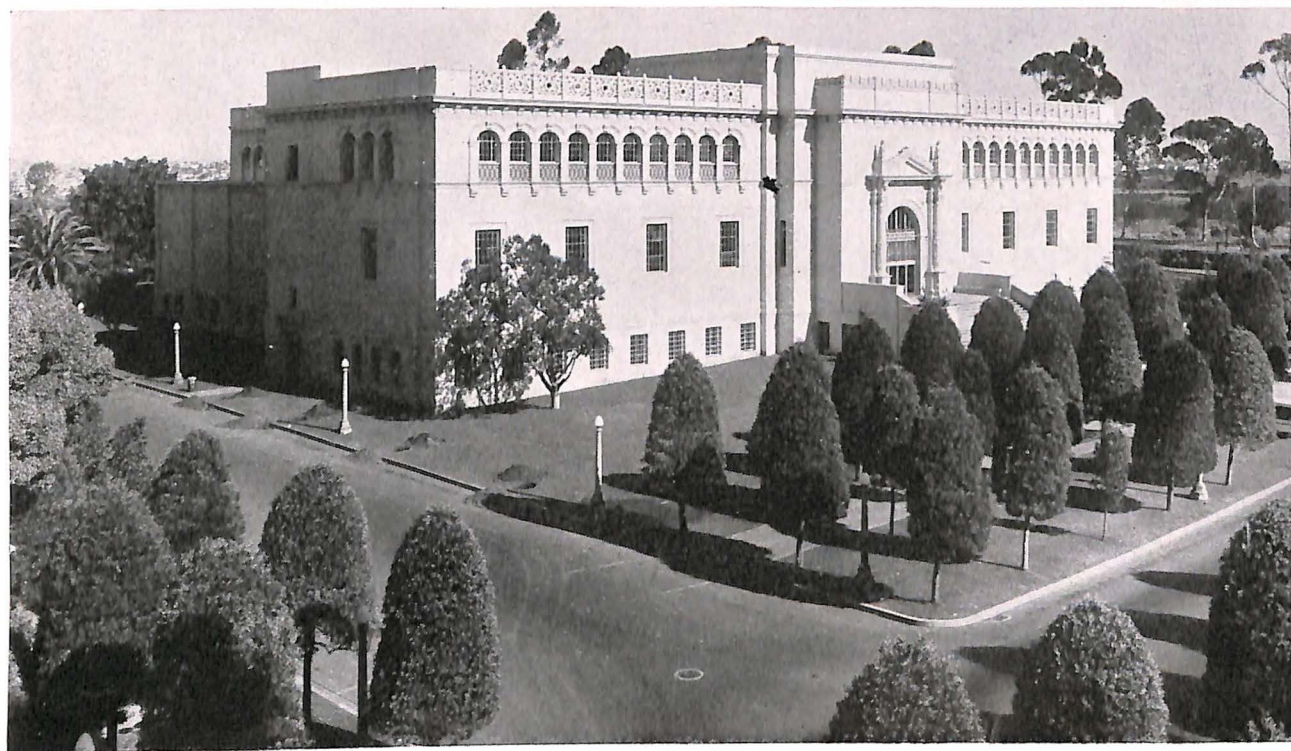
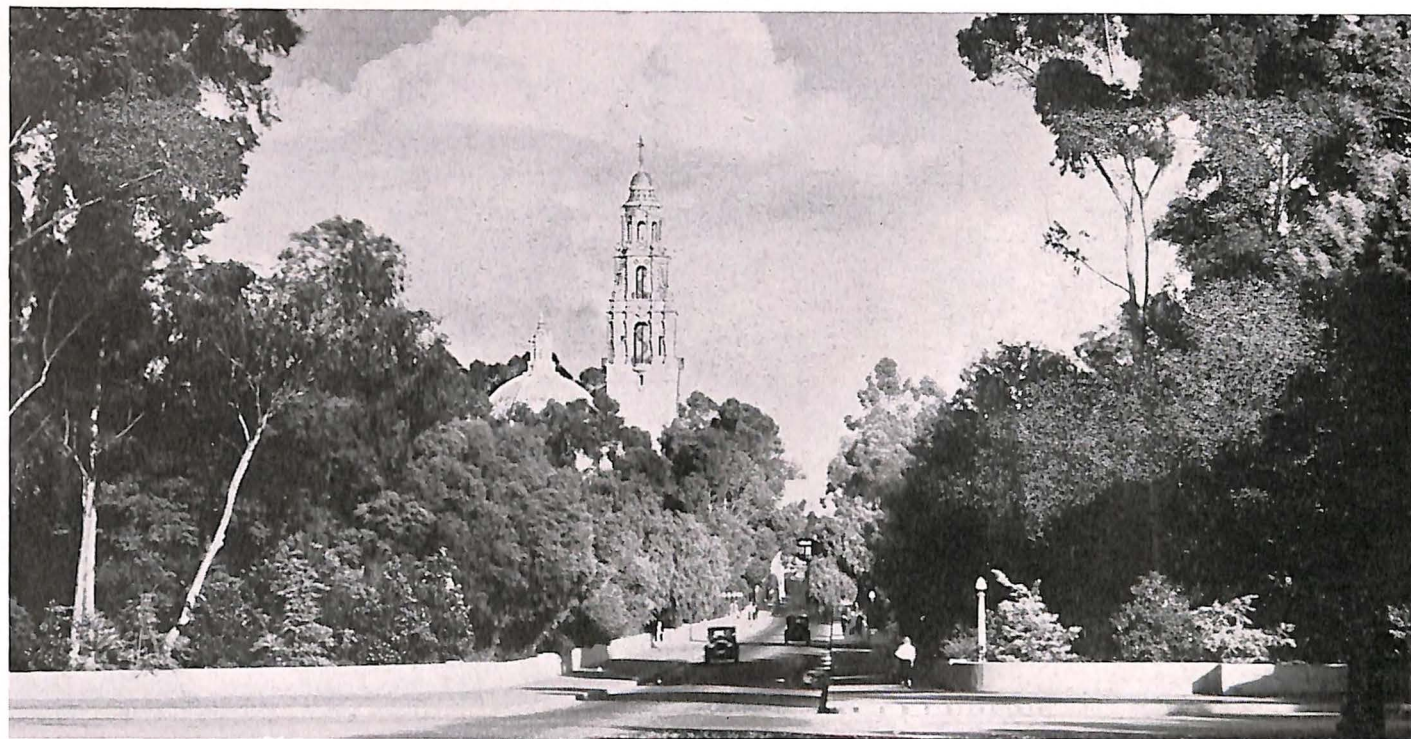


CABRILLO BRIDGE



CAFE OF THE WORLD

LAUREL STREET ENTRANCE
TO THE EXPOSITION



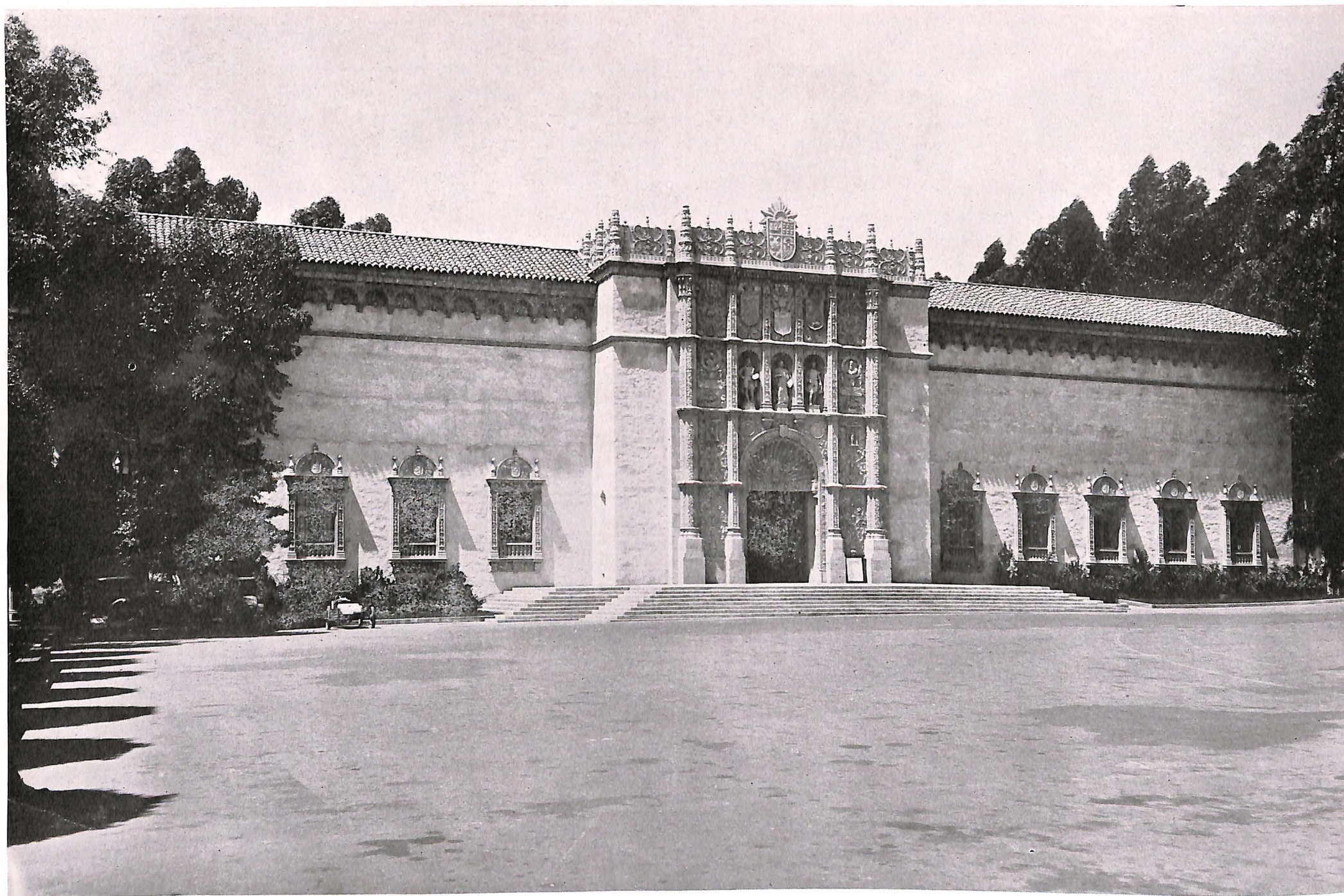
NATURAL HISTORY MUSEUM



BOTANICAL GARDENS



PALACE OF MODERN HOMES



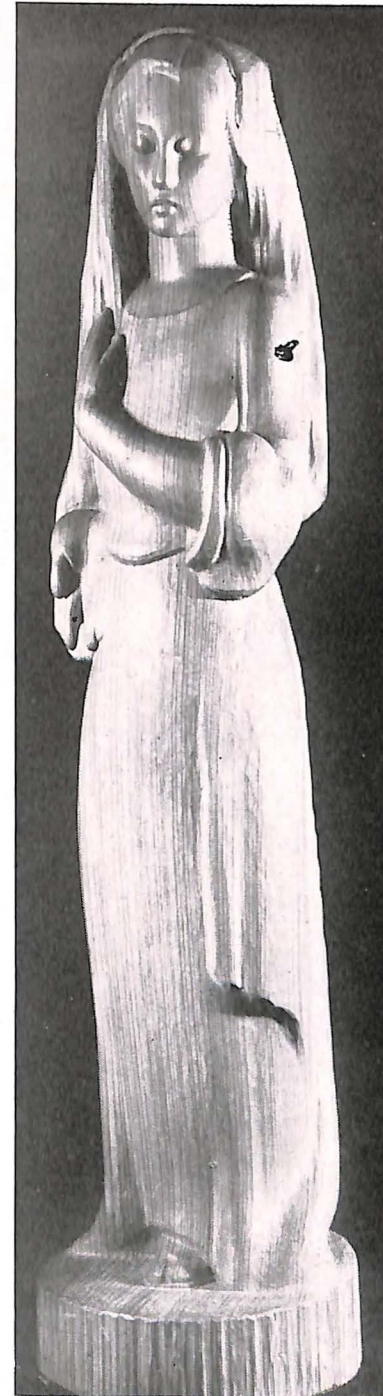
PALACE OF FINE ARTS



MYSTIC MARRIAGE OF
ST. CATHERINE



TWO OLD CHINESE BRONZES



GLAZED TERRA COTTA
STATUE—"MAN WITH SHEAF
OF WHEAT"

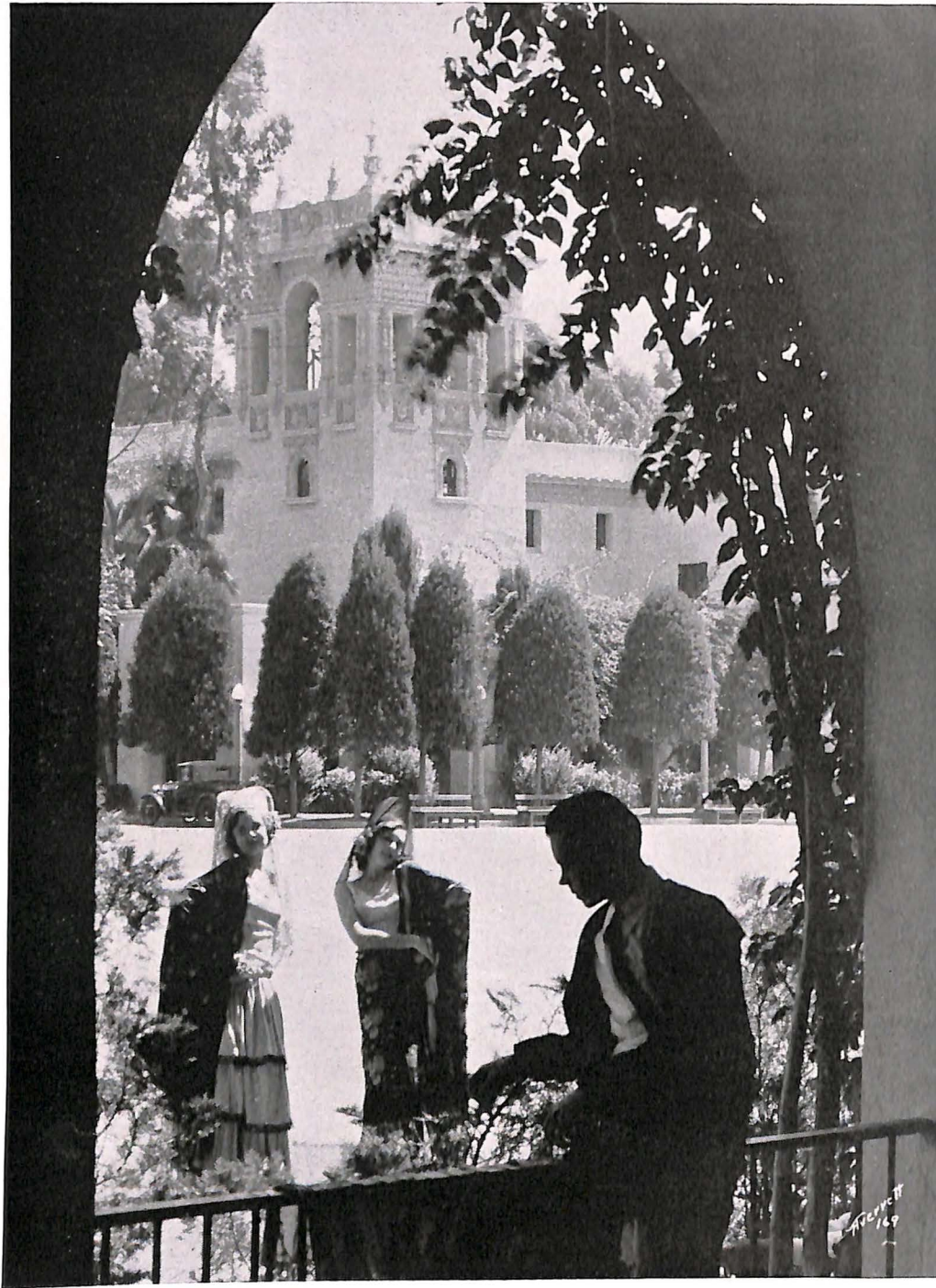
A FEW OF THE WORLD FAMOUS MASTERPIECES ON DISPLAY IN THE PALACE OF FINE ARTS



AVENUE OF PALACES



A CORNER OF THE LAGOON



PALACE OF HOSPITALITY THROUGH ARCH



PALACE OF SCIENCE



TRANSPORTATION DELUXE AT THE EXPOSITION



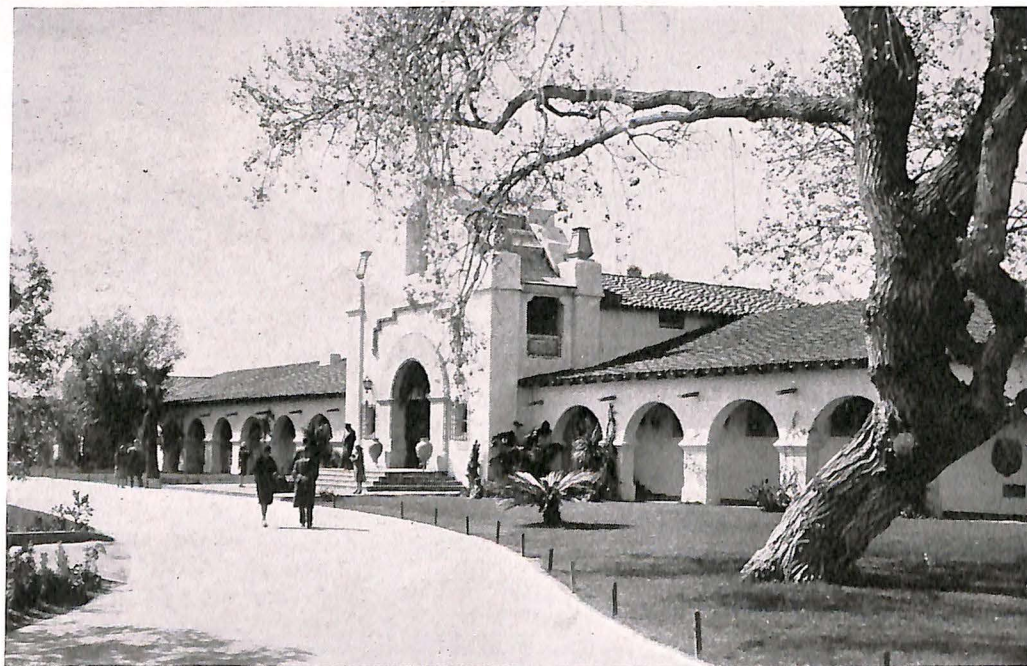
TOWER AND DOME OF PALACE OF SCIENCE



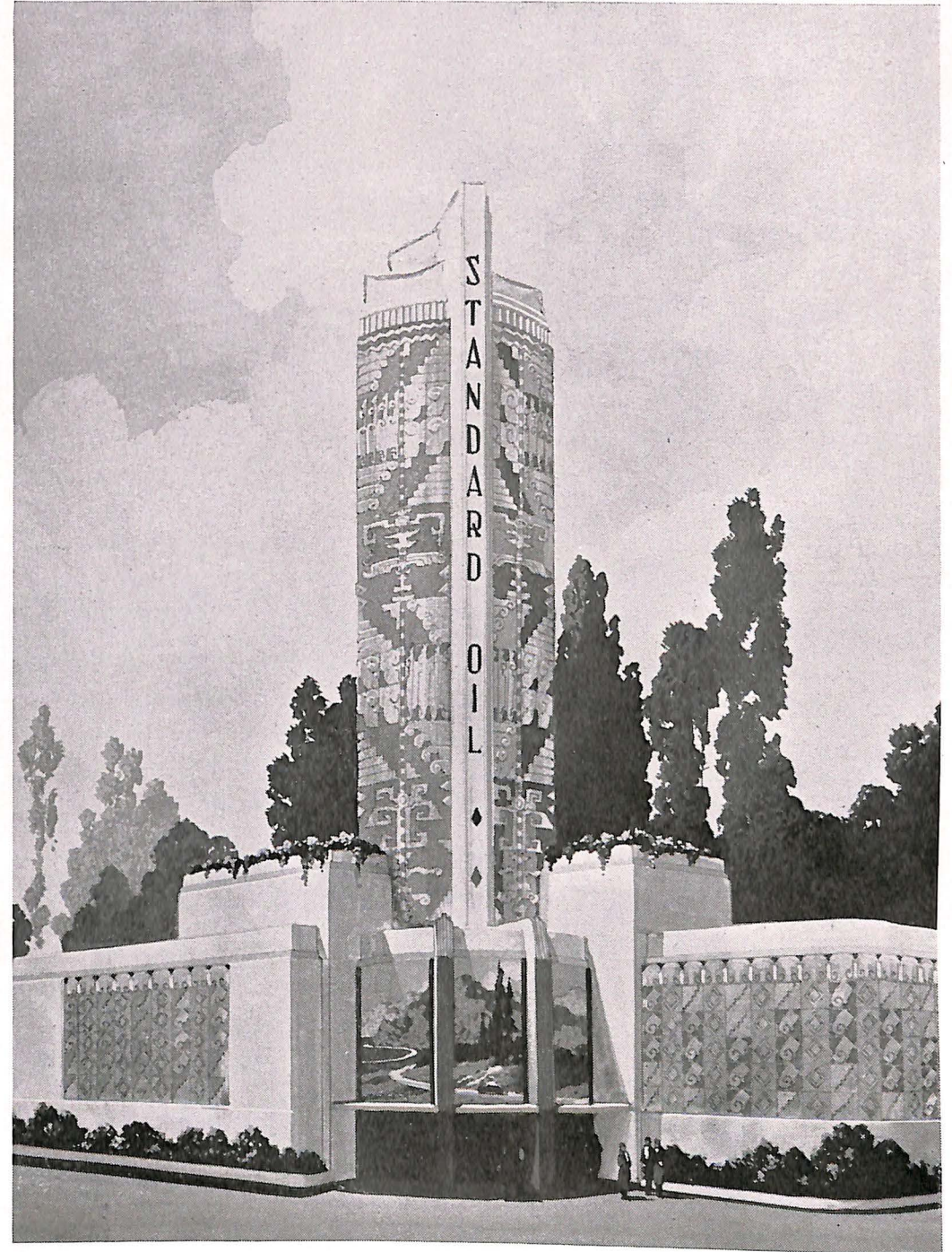




RAMONA'S MARRIAGE PLACE AND CACTI GARDEN



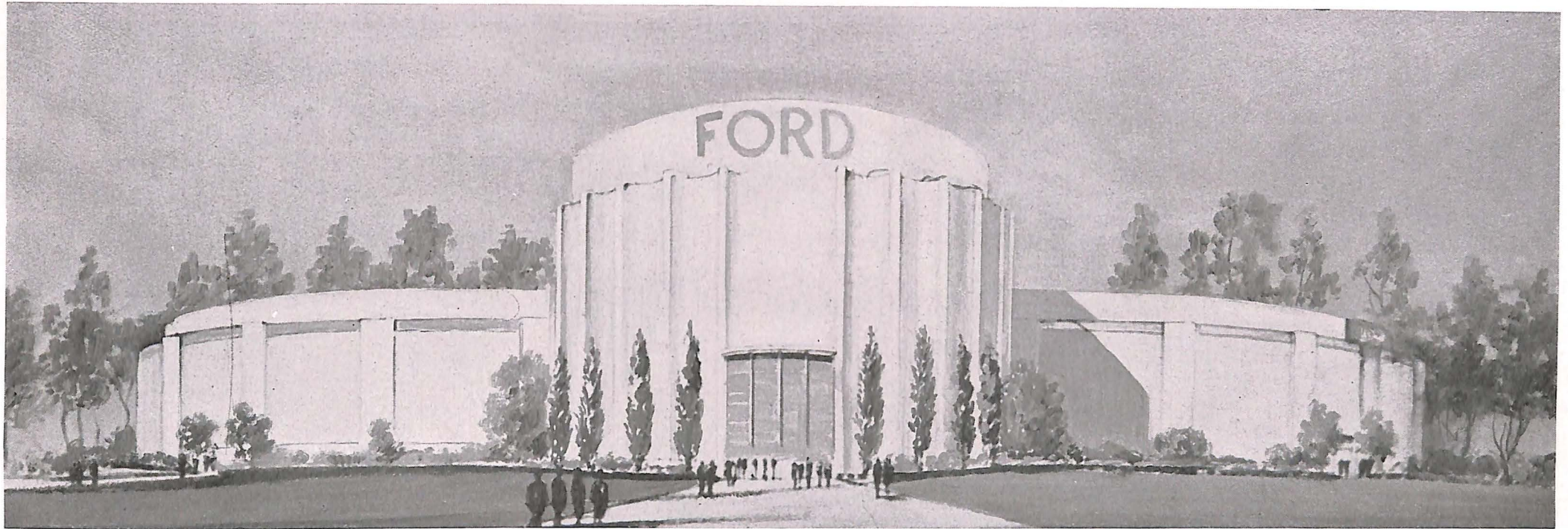
AGUA CALIENTE, MEXICO



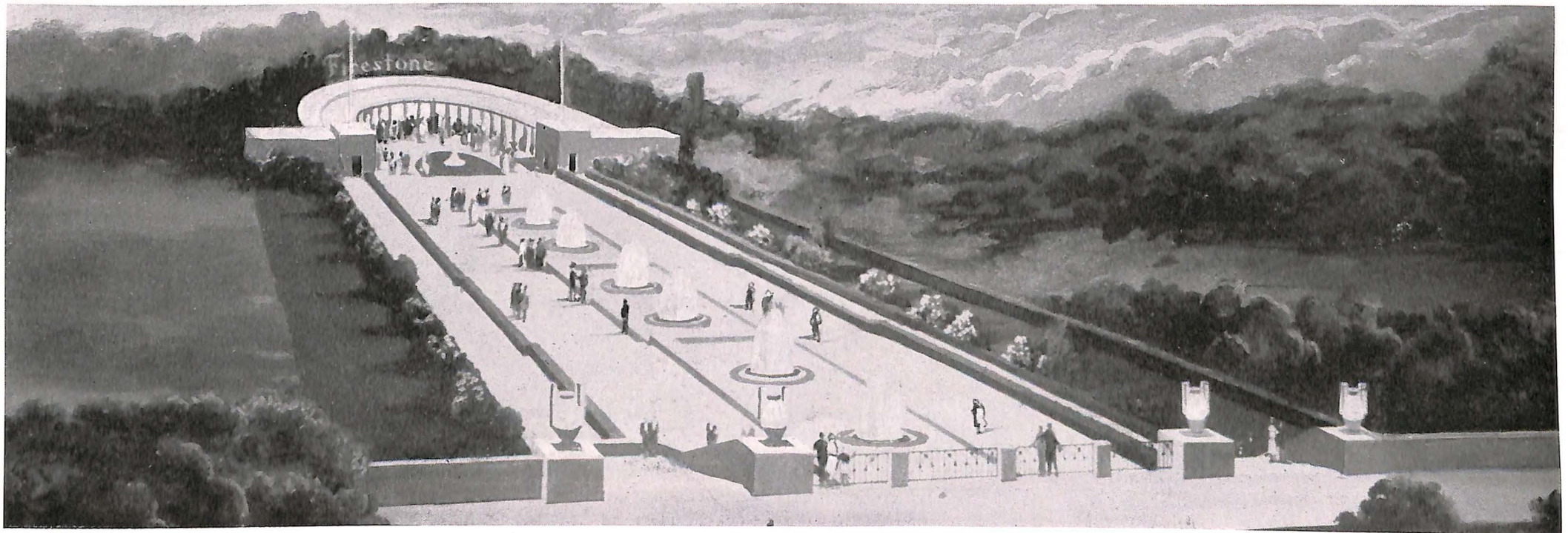
THE STANDARD OIL BUILDING



AIRPLANE
VIEW OF
SAN DIEGO
PALOMAR
MOUNTAINS
IN THE DISTANCE



FORD BUILDING



FIRESTONE'S SINGING FOUNTAIN



VIEW FROM THE PALACE OF NATURAL HISTORY LOOKING DOWN THE AVENUE OF PALACES



HOUSE OF CHARM

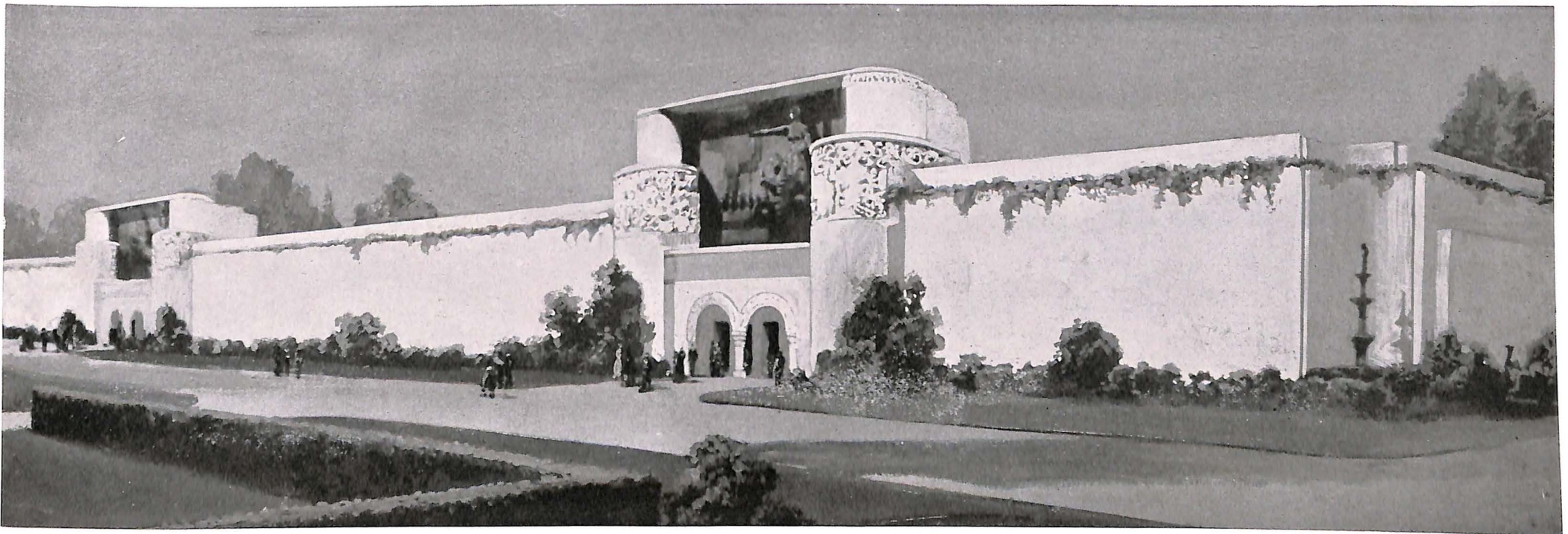


CHRISTIAN SCIENCE MONITOR BUILDING



Left . . . HOLLYWOOD MOTION PICTURE HALL OF FAME

Right . . . PALACE OF EDUCATION



PALACE OF TRAVEL, TRANSPORTATION AND WATER



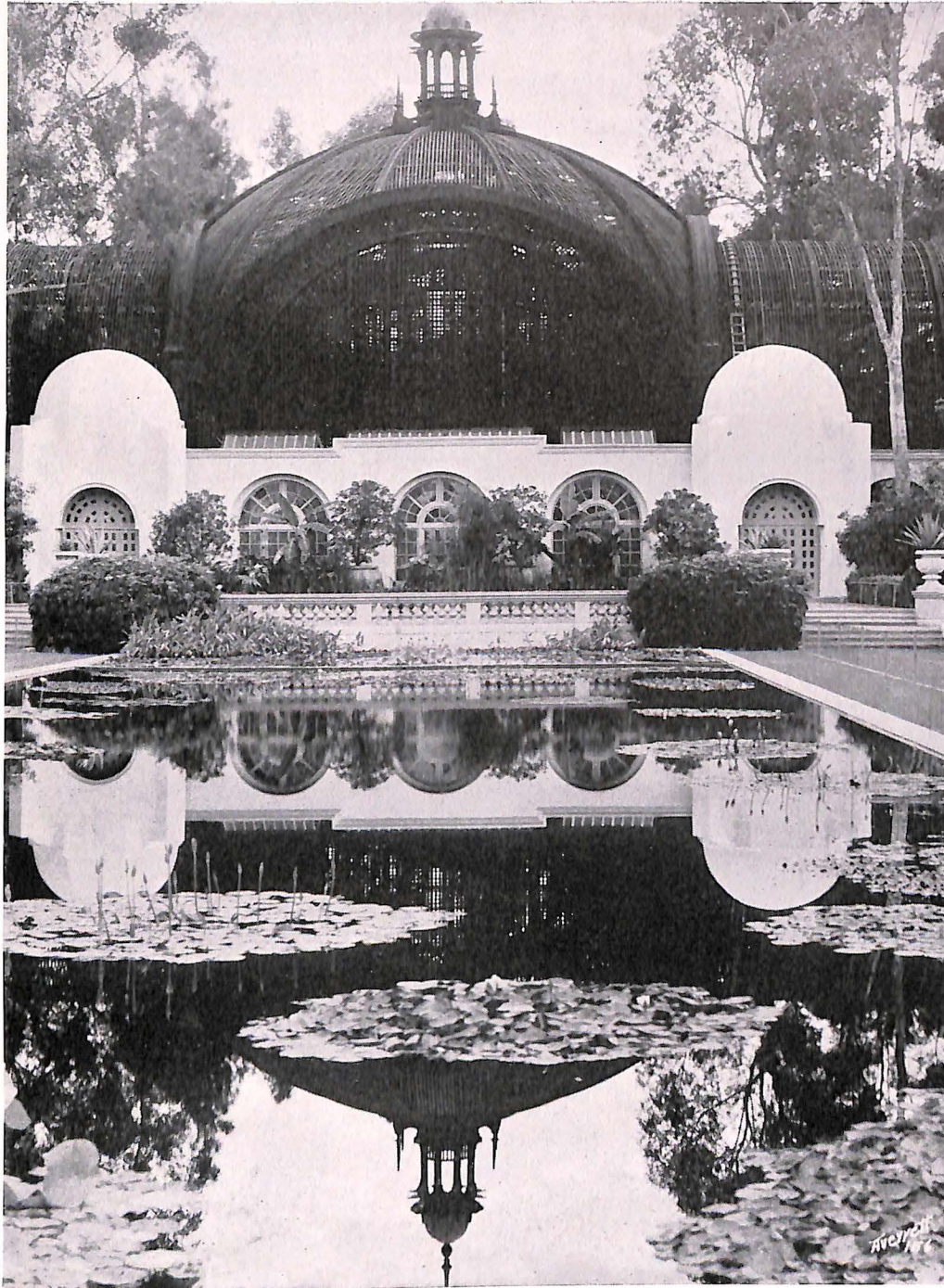
PACIFIC RELATIONS GROUP



SPANISH VILLAGE



JAPANESE TEA GARDEN



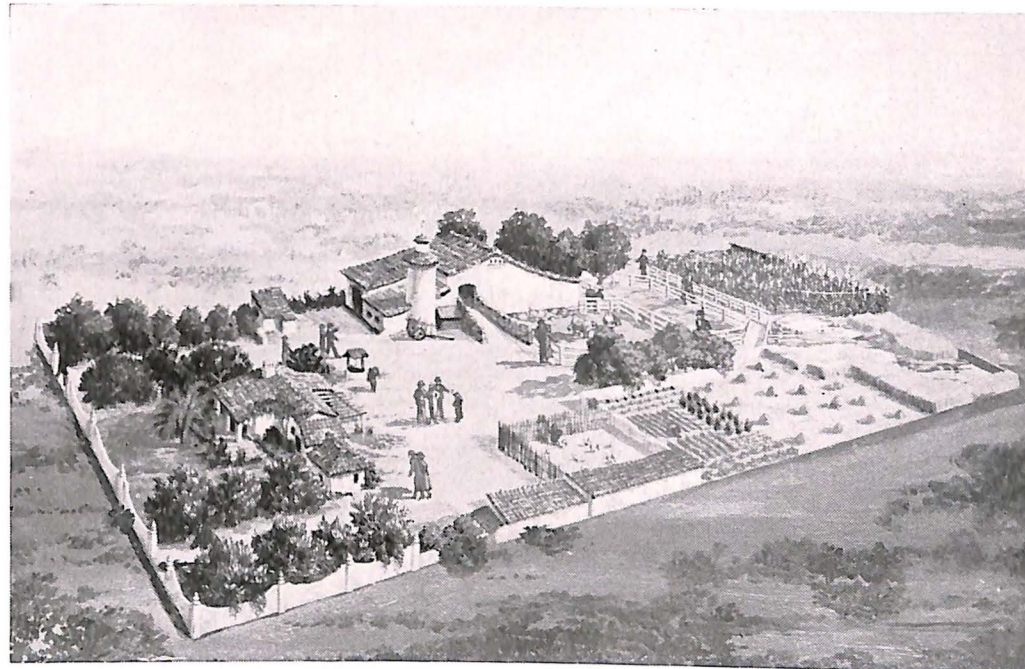
BOTANICAL BUILDING



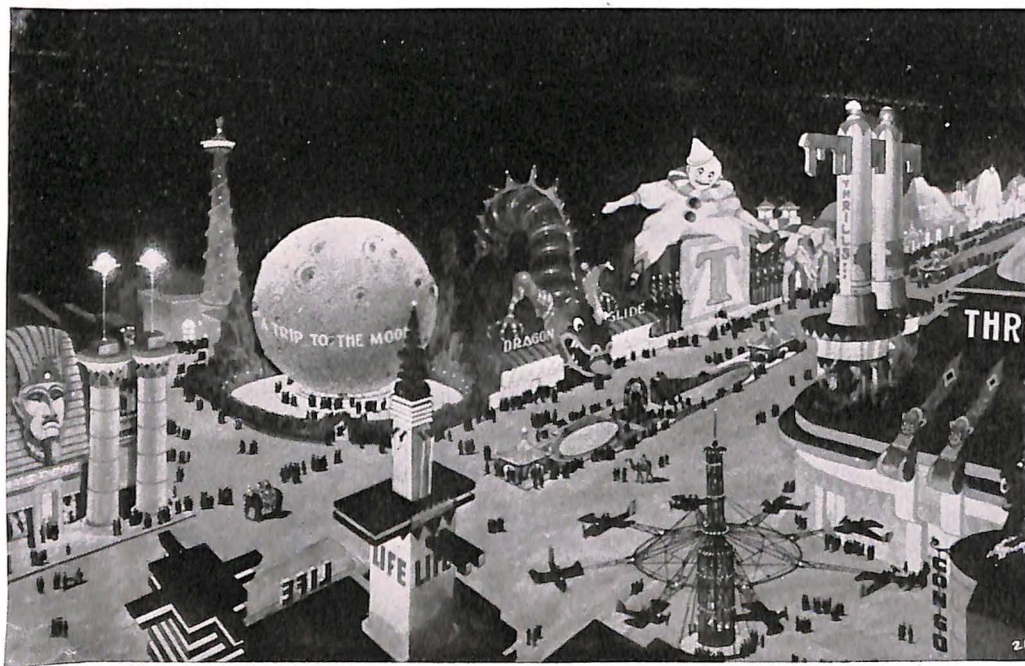
A VISTA THROUGH THE TREES



PATIO IN HOUSE OF HOSPITALITY



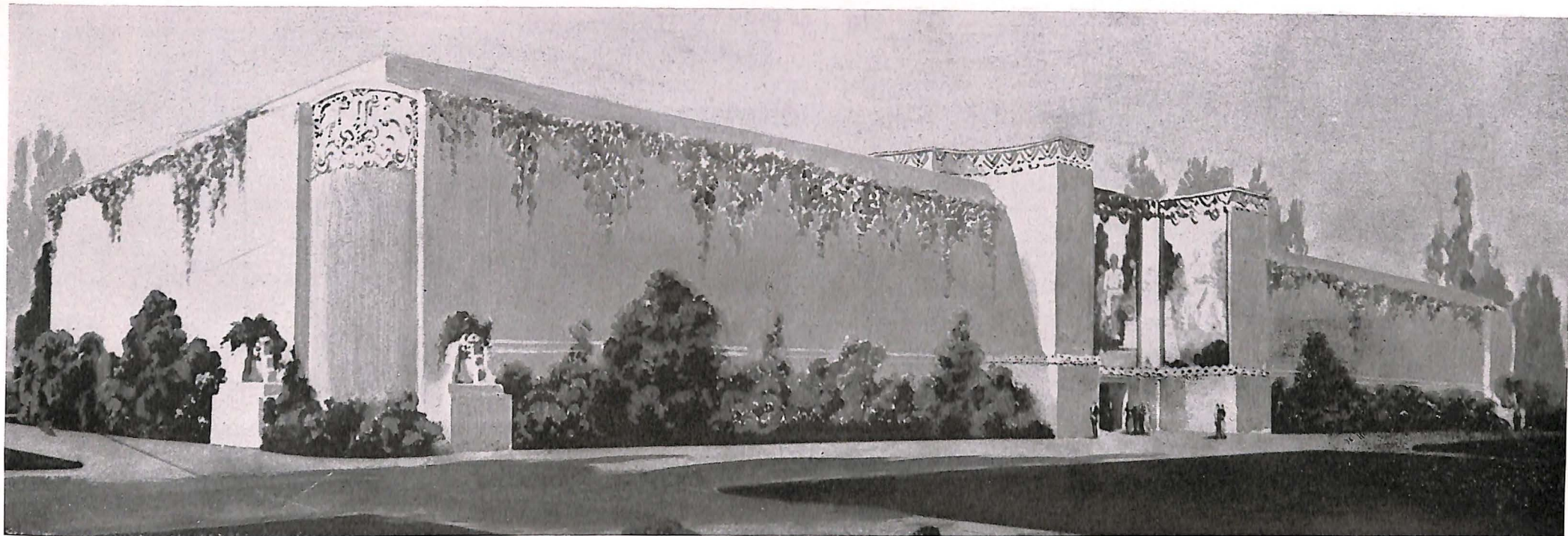
MIDGET FARM



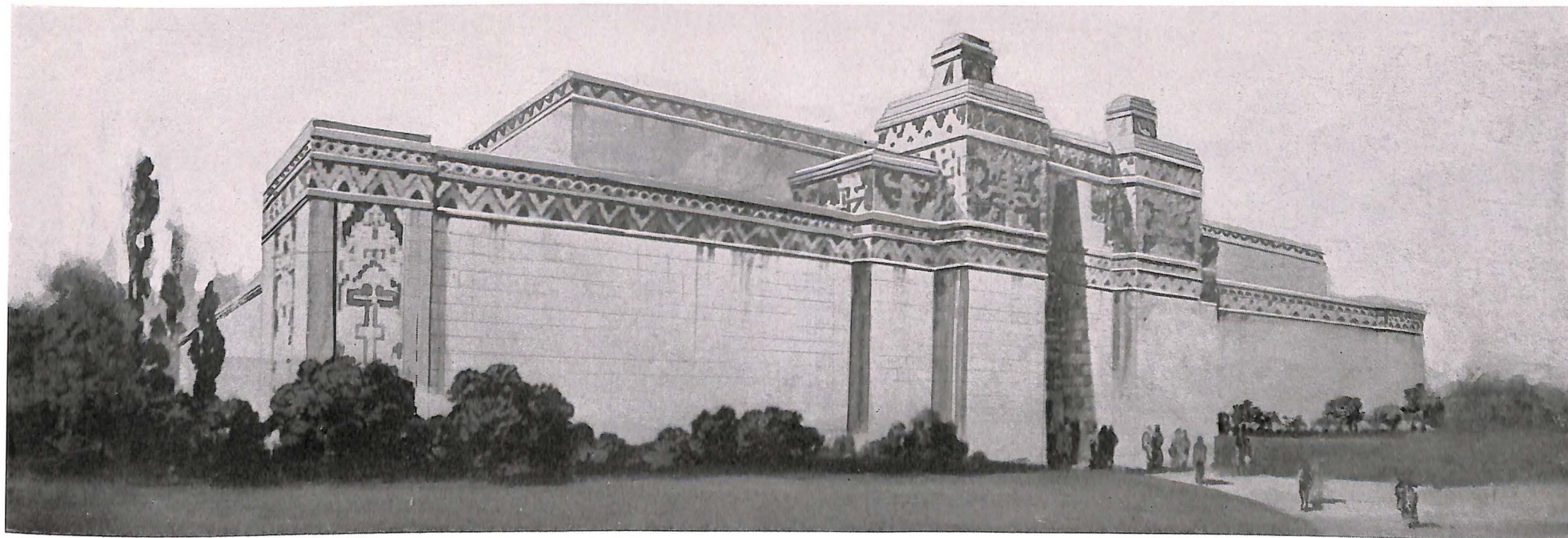
FUN ZONE INTERIOR



DAYS OF '49



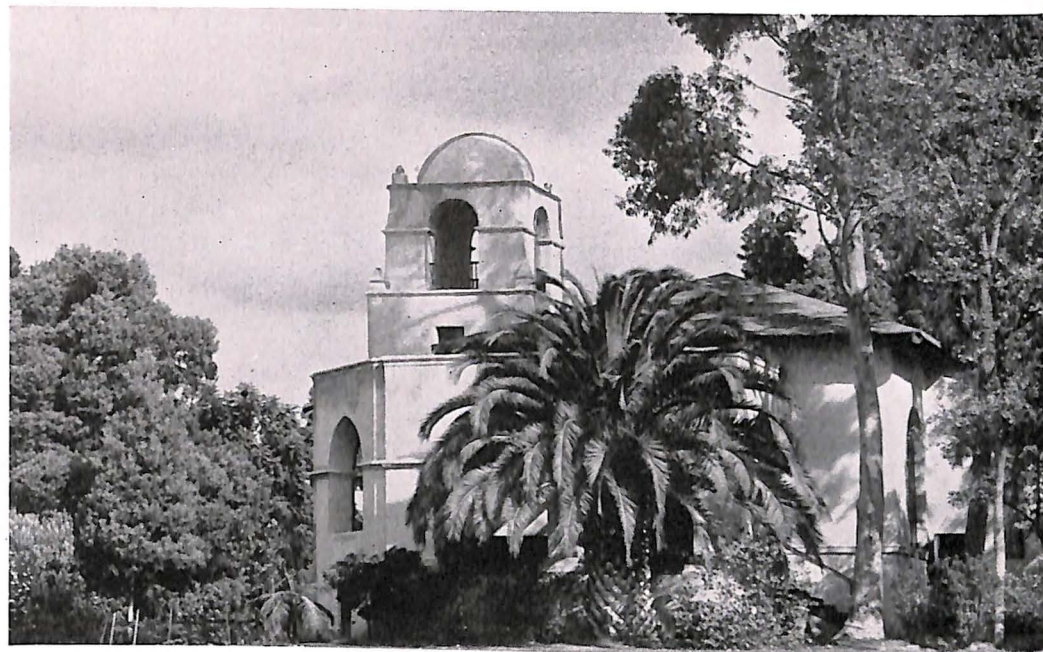
PALACE OF ELECTRICITY AND VARIED INDUSTRIES



FEDERAL BUILDING



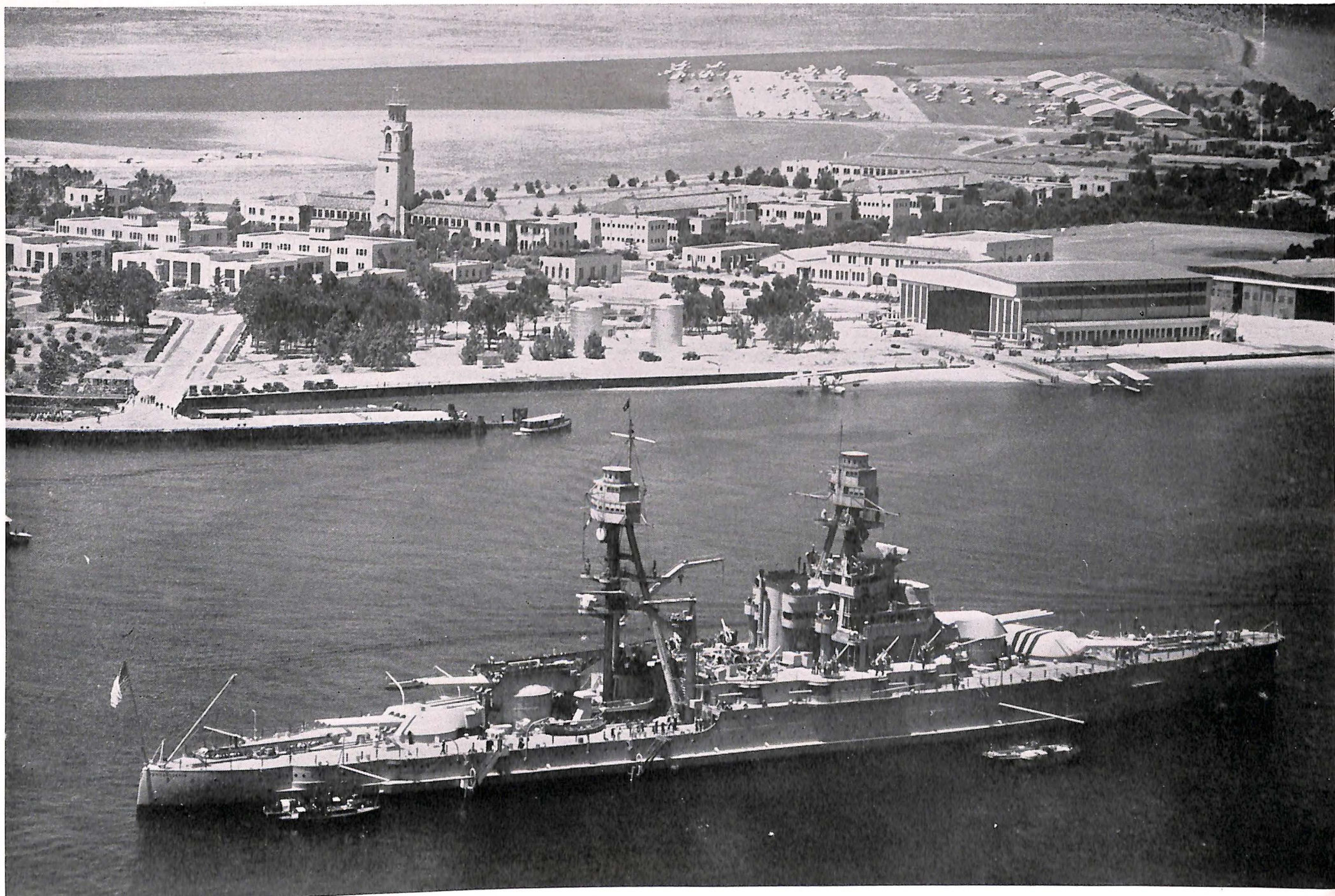
INDIAN VILLAGE



PRESS BUILDING



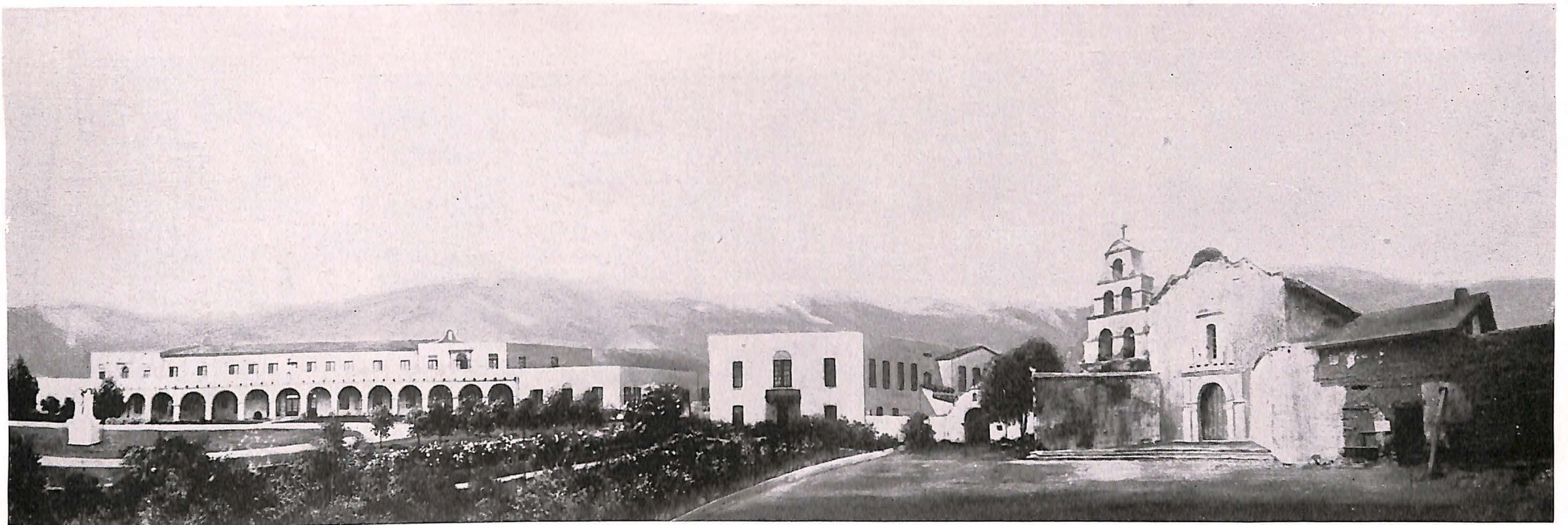
SAN DIEGO AT NIGHT



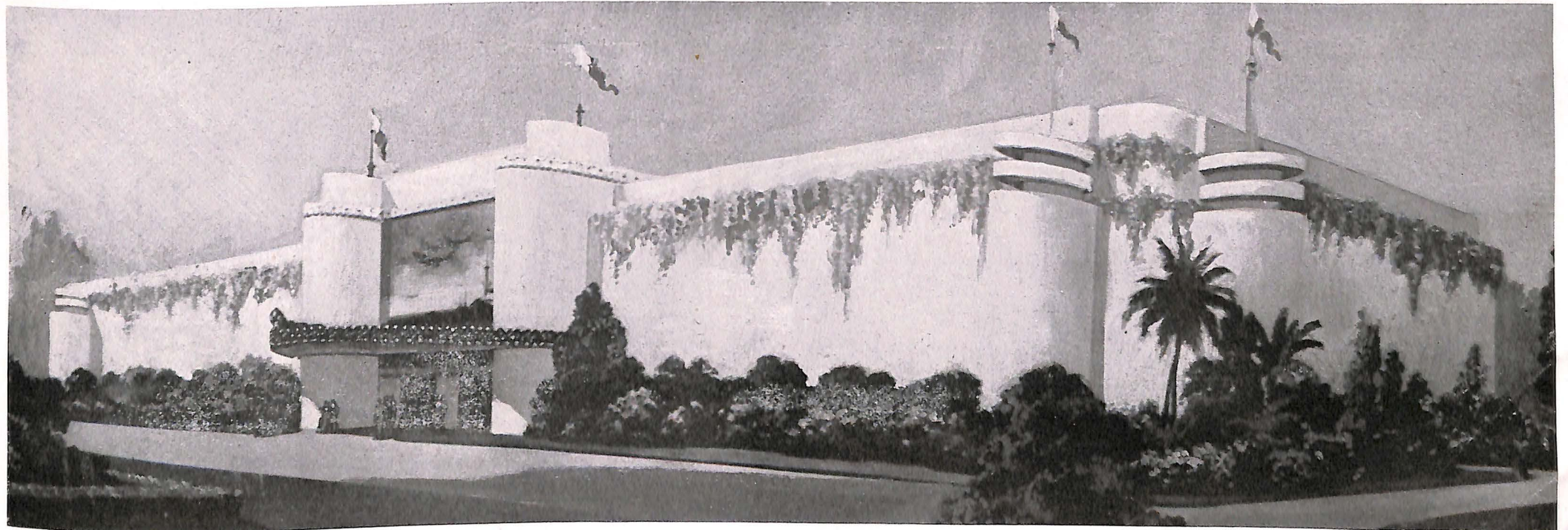
U. S. NAVAL BASE...SAN DIEGO HARBOR...BATTLESHIP PENNSYLVANIA IN THE FOREGROUND



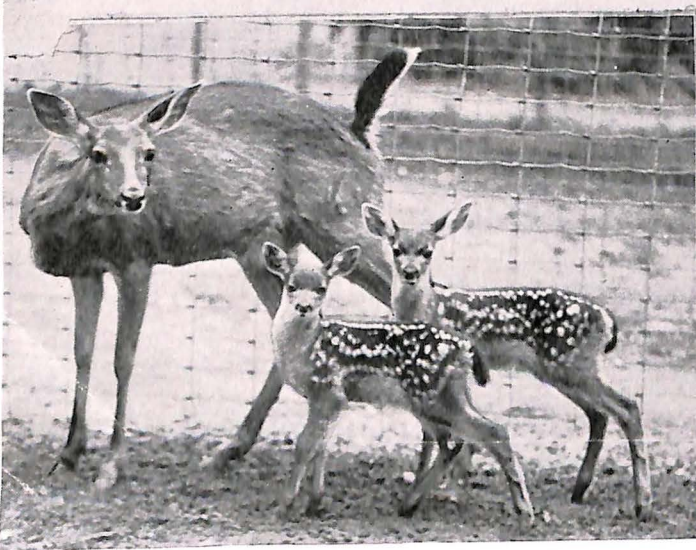
AERIAL VIEW OF CORONADO—SAN DIEGO HARBOR IN BACKGROUND



RESTORED MISSION OF SAN DIEGO DE ALCALA. CALIFORNIA'S FIRST MISSION FOUNDED JULY 16, 1769



BEAUTY EMPHASIZED IN CALIFORNIA STATE BUILDING



SOME STAR BOARDERS AT THE EXPOSITION ZOO

