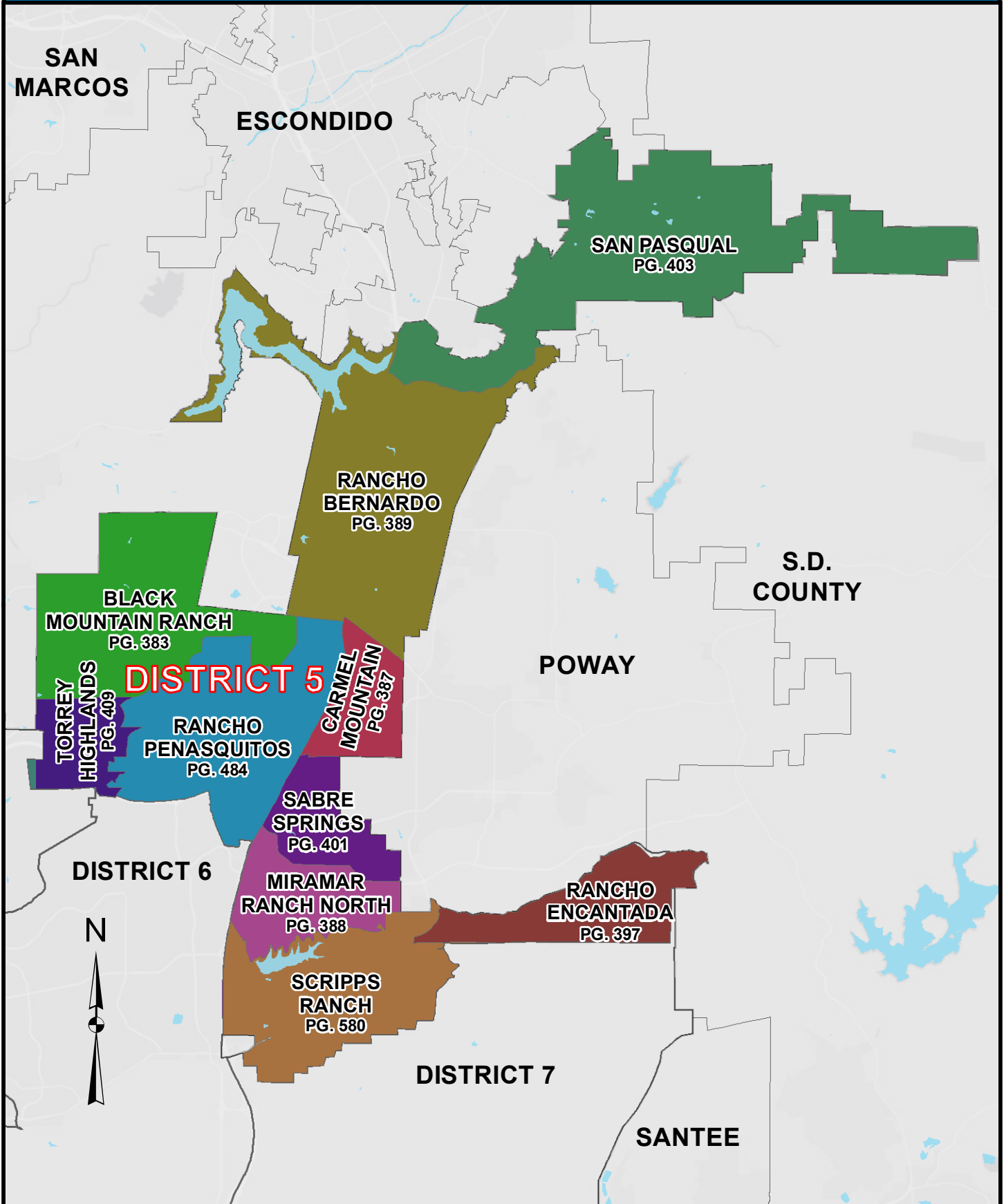




COUNCIL DISTRICT 5 NEIGHBORHOODS KEYED MAP





COUNCIL DISTRICT 5

NEIGHBORHOOD: BLACK MOUNTAIN RANCH KEYED MAP



S.D.
COUNTY

PG. 385

PG. 385




BLACK
MOUNTAIN
RANCH

RANCHO
BERNARDO

PG.
386

RANCHO
PENASQUITOS

Legend

-  Surcharge Projects
-  Projects In Progress
-  Rule20A Projects



SABRE
SPRINGS



COUNCIL DISTRICT 5

NEIGHBORHOOD: BLACK MOUNTAIN RANCH

PLANNING COMMUNITY: BLACK MOUNTAIN RANCH



SURCHARGE PROJECT BMTN-S1: BLACK MOUNTAIN RANCH SEGMENT 01

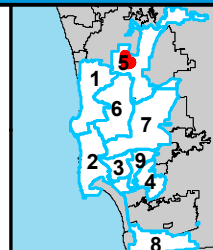
BOUNDARY LEGEND

- Project Boundary
- Parcel Boundaries



PROJECT DATA

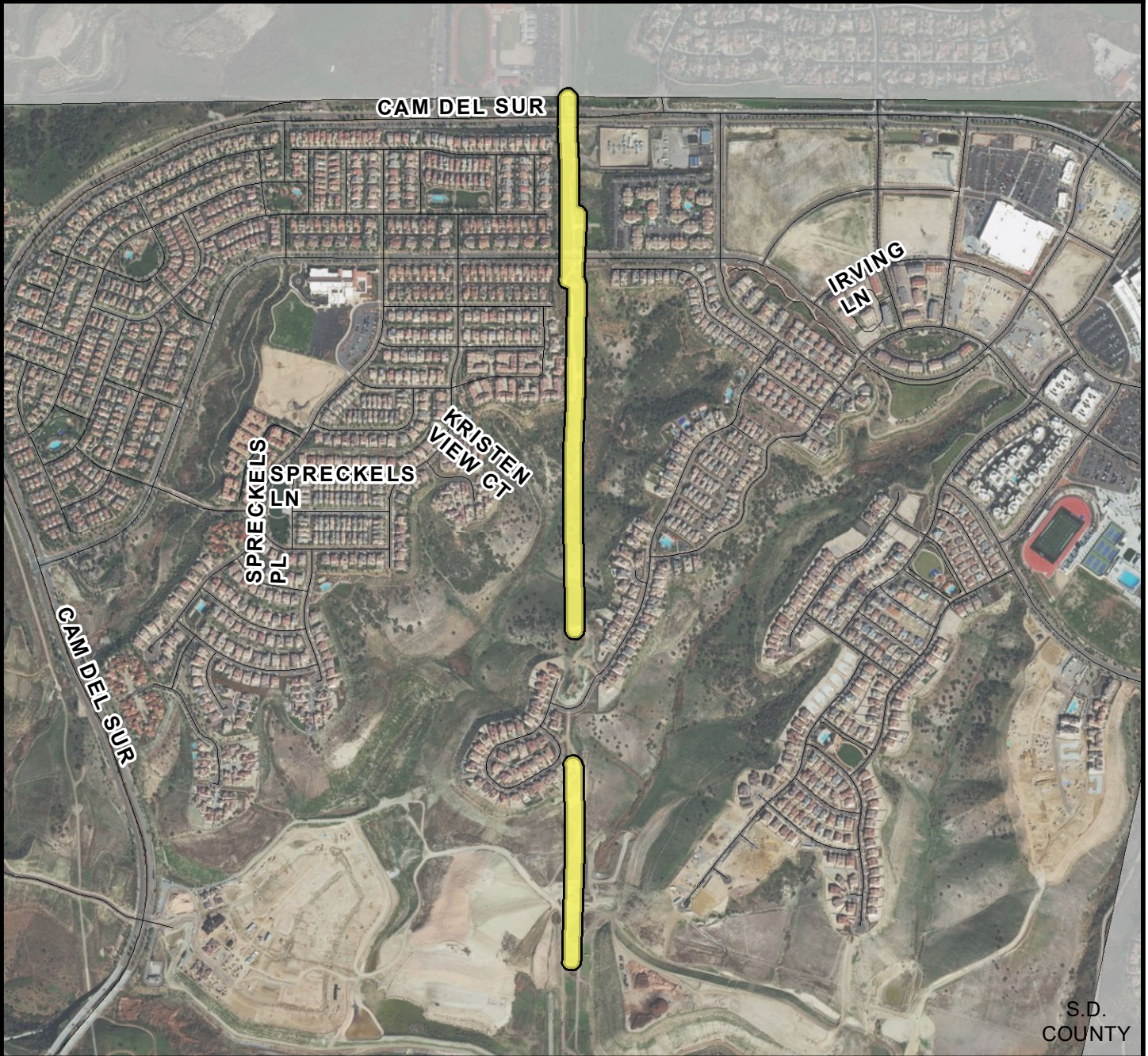
TRENCH LENGTH:	11,881 FT
SERVICE DROPS:	10
POWER POLE REMOVAL:	30
TRANSFORMER COUNT:	1
ESTIMATED COST:	\$ 5,633,235



THIS MAP/DATA IS PROVIDED WITHOUT WARRANTY OF ANY KIND, EITHER EXPRESSED OR IMPLIED, INCLUDING BUT NOT LIMITED TO, THE IMPLIED WARRANTIES OF MERCHANTABILITY AND FITNESS FOR A PARTICULAR PURPOSE.



COUNCIL DISTRICT 5
NEIGHBORHOOD: BLACK MOUNTAIN RANCH
PLANNING COMMUNITY: BLACK MOUNTAIN RANCH



SURCHARGE PROJECT
BMTN-S2: BLACK MOUNTAIN RANCH SEGMENT 02

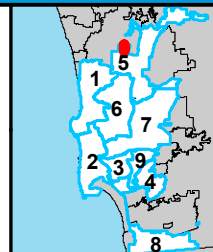
BOUNDARY LEGEND

-  Project Boundary
-  Parcel Boundaries



PROJECT DATA

TRENCH LENGTH:	5,496 FT
SERVICE DROPS:	1
POWER POLE REMOVAL:	10
TRANSFORMER COUNT:	0
ESTIMATED COST:	\$ 2,641,947



SanGIS
San Diego County
 THIS MAP/DATA IS PROVIDED WITHOUT WARRANTY OF ANY KIND, EITHER EXPRESSED OR IMPLIED, INCLUDING BUT NOT LIMITED TO, THE IMPLIED WARRANTIES OF MERCHANTABILITY AND FITNESS FOR A PARTICULAR PURPOSE.



COUNCIL DISTRICT 5

NEIGHBORHOOD: BLACK MOUNTAIN RANCH

PLANNING COMMUNITY: BLACK MOUNTAIN RANCH

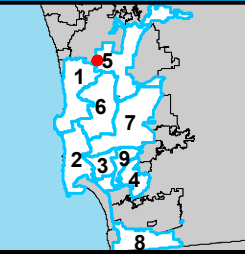


SURCHARGE PROJECT BMTN-S3: BLACK MOUNTAIN RANCH SEGMENT 03

BOUNDARY LEGEND	
	Project Boundary
	Parcel Boundaries



PROJECT DATA	
TRENCH LENGTH:	1,427 FT
SERVICE DROPS:	0
POWER POLE REMOVAL:	8
TRANSFORMER COUNT:	3
ESTIMATED COST:	\$ 940,431






SanGIS
© 2014 San Diego County
 THIS MAP/DATA IS PROVIDED WITHOUT WARRANTY OF ANY KIND, EITHER EXPRESSED OR IMPLIED, INCLUDING BUT NOT LIMITED TO, THE IMPLIED WARRANTIES OF MERCHANTABILITY AND FITNESS FOR A PARTICULAR PURPOSE.



COUNCIL DISTRICT 5 NEIGHBORHOOD: CARMEL MOUNTAIN KEYED MAP

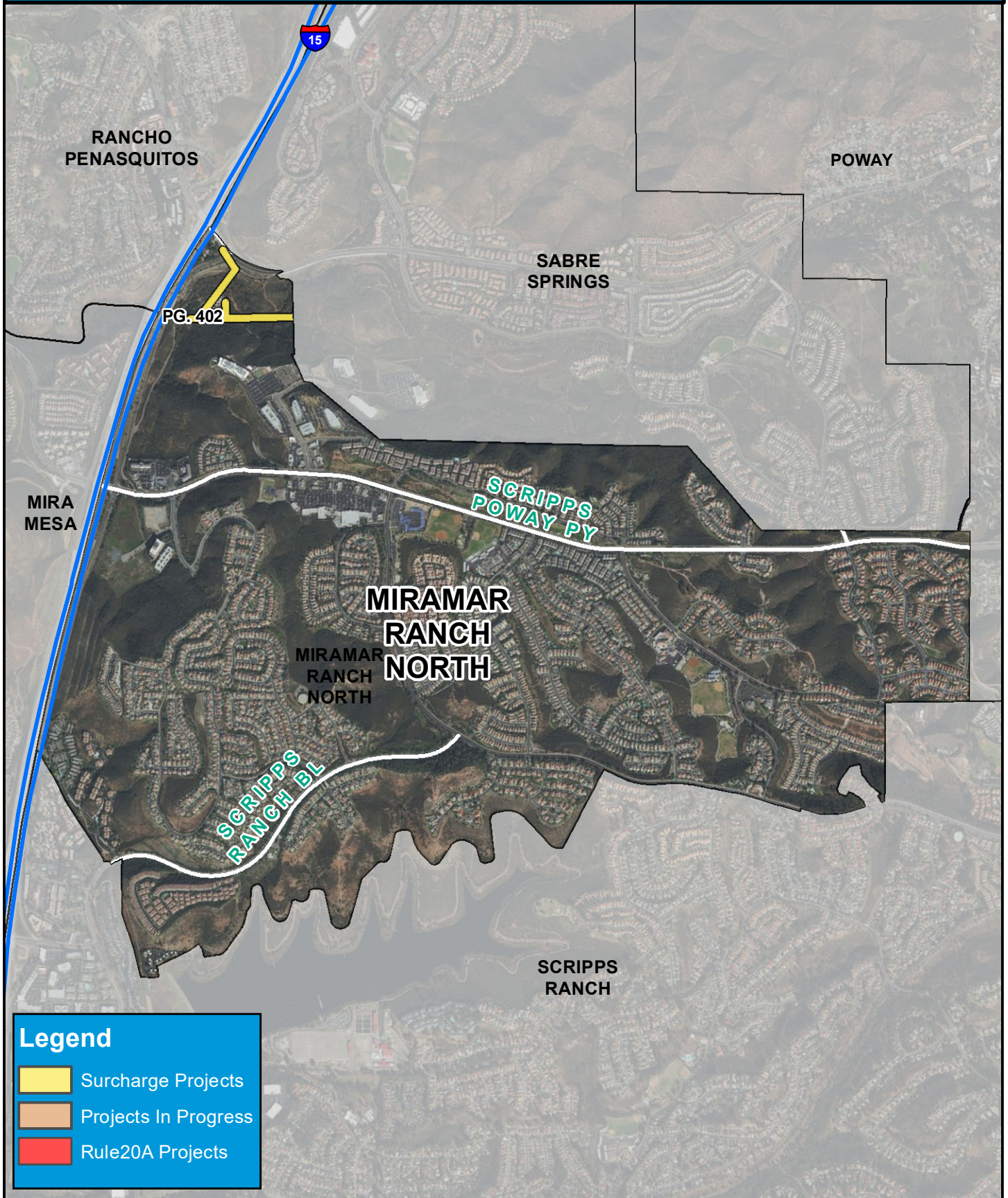


Legend

-  Surcharge Projects
-  Projects In Progress
-  Rule20A Projects



COUNCIL DISTRICT 5 NEIGHBORHOOD: MIRAMAR RANCH NORTH KEYED MAP

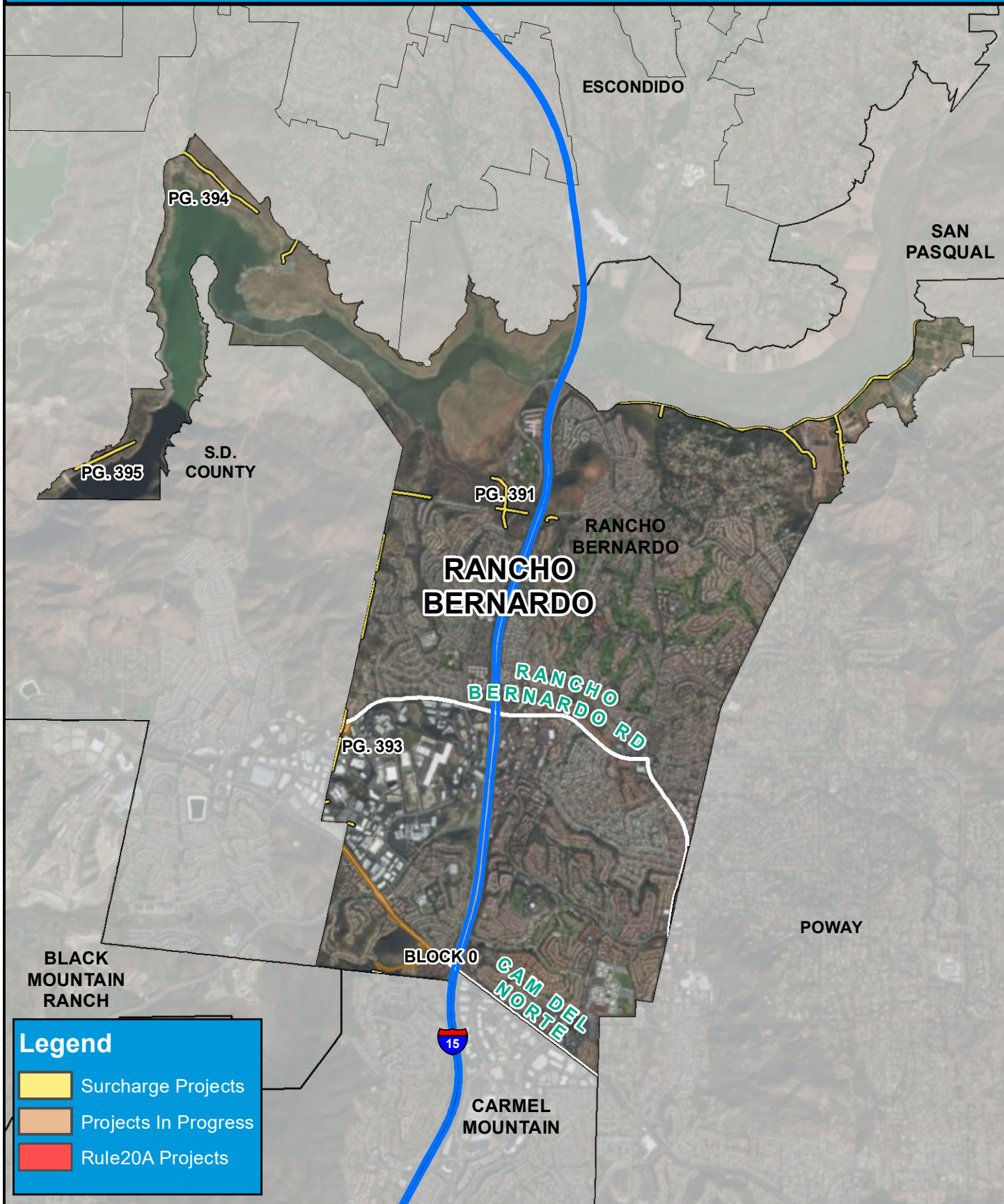


Legend




- Surcharge Projects
- Projects In Progress
- Rule20A Projects



COUNCIL DISTRICT 5 NEIGHBORHOOD: RANCHO BERNARDO KEYED MAP



Legend

-  Surcharge Projects
-  Projects In Progress
-  Rule20A Projects



COUNCIL DISTRICT 5
NEIGHBORHOOD: RANCHO BERNARDO
PLANNING COMMUNITY: SAN PASQUAL



SURCHARGE PROJECT
RCHB-S1: RANCHO BERNARDO SEGMENT 01

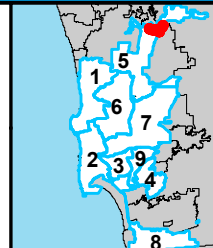
BOUNDARY LEGEND

-  Project Boundary
-  Parcel Boundaries



PROJECT DATA

TRENCH LENGTH:	21,241 FT
SERVICE DROPS:	0
POWER POLE REMOVAL:	62
TRANSFORMER COUNT:	11
ESTIMATED COST:	\$ 9,941,096



THIS MAP/DATA IS PROVIDED WITHOUT WARRANTY OF ANY KIND, EITHER EXPRESSED OR IMPLIED, INCLUDING BUT NOT LIMITED TO, THE IMPLIED WARRANTIES OF MERCHANTABILITY AND FITNESS FOR A PARTICULAR PURPOSE.



COUNCIL DISTRICT 5
NEIGHBORHOOD: RANCHO BERNARDO
PLANNING COMMUNITY: RANCHO BERNARDO



SURCHARGE PROJECT
RCHB-S2: RANCHO BERNARDO SEGMENT 02

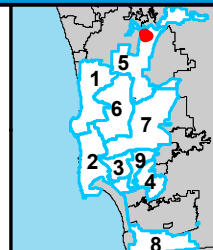
BOUNDARY LEGEND

-  Project Boundary
-  Parcel Boundaries



PROJECT DATA

TRENCH LENGTH:	3,619 FT
SERVICE DROPS:	0
POWER POLE REMOVAL:	25
TRANSFORMER COUNT:	1
ESTIMATED COST:	\$ 1,926,066



THIS MAP/DATA IS PROVIDED WITHOUT WARRANTY OF ANY KIND, EITHER EXPRESSED OR IMPLIED, INCLUDING BUT NOT LIMITED TO, THE IMPLIED WARRANTIES OF MERCHANTABILITY AND FITNESS FOR A PARTICULAR PURPOSE.



COUNCIL DISTRICT 5
NEIGHBORHOOD: RANCHO BERNARDO
PLANNING COMMUNITY: RANCHO BERNARDO



SURCHARGE PROJECT
RCHB-S3: RANCHO BERNARDO SEGMENT 03

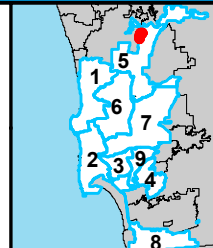
BOUNDARY LEGEND

-  Project Boundary
-  Parcel Boundaries



PROJECT DATA

TRENCH LENGTH:	4,660 FT
SERVICE DROPS:	3
POWER POLE REMOVAL:	10
TRANSFORMER COUNT:	0
ESTIMATED COST:	\$ 2,301,910



THIS MAP/DATA IS PROVIDED WITHOUT WARRANTY OF ANY KIND, EITHER EXPRESSED OR IMPLIED, INCLUDING BUT NOT LIMITED TO, THE IMPLIED WARRANTIES OF MERCHANTABILITY AND FITNESS FOR A PARTICULAR PURPOSE.





COUNCIL DISTRICT 5
NEIGHBORHOOD: RANCHO BERNARDO
PLANNING COMMUNITY: RANCHO BERNARDO



SURCHARGE PROJECT
RCHB-S4: RANCHO BERNARDO SEGMENT 04

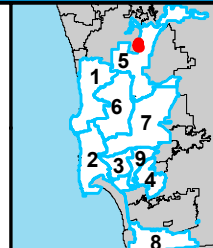
BOUNDARY LEGEND

-  Project Boundary
-  Parcel Boundaries



PROJECT DATA

TRENCH LENGTH:	2,262 FT
SERVICE DROPS:	0
POWER POLE REMOVAL:	7
TRANSFORMER COUNT:	0
ESTIMATED COST:	\$ 1,209,888



SanGIS
San Diego County
 THIS MAP/DATA IS PROVIDED WITHOUT WARRANTY OF ANY KIND, EITHER EXPRESSED OR IMPLIED, INCLUDING BUT NOT LIMITED TO, THE IMPLIED WARRANTIES OF MERCHANTABILITY AND FITNESS FOR A PARTICULAR PURPOSE.



COUNCIL DISTRICT 5
NEIGHBORHOOD: RANCHO BERNARDO
PLANNING COMMUNITY: SAN PASQUAL



SURCHARGE PROJECT
RCHB-S5: RANCHO BERNARDO SEGMENT 05

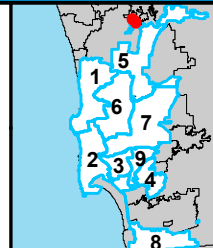
BOUNDARY LEGEND

- Project Boundary
- Parcel Boundaries



PROJECT DATA

TRENCH LENGTH:	4,752 FT
SERVICE DROPS:	0
POWER POLE REMOVAL:	15
TRANSFORMER COUNT:	1
ESTIMATED COST:	\$ 2,350,182



THIS MAP/DATA IS PROVIDED WITHOUT WARRANTY OF ANY KIND, EITHER EXPRESSED OR IMPLIED, INCLUDING BUT NOT LIMITED TO, THE IMPLIED WARRANTIES OF MERCHANTABILITY AND FITNESS FOR A PARTICULAR PURPOSE.



COUNCIL DISTRICT 5
NEIGHBORHOOD: RANCHO BERNARDO
PLANNING COMMUNITY: SAN PASQUAL



SURCHARGE PROJECT
RCHB-S6: RANCHO BERNARDO SEGMENT 06

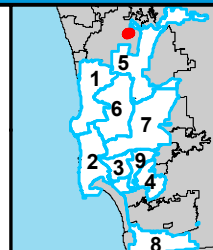
BOUNDARY LEGEND

-  Project Boundary
-  Parcel Boundaries



PROJECT DATA

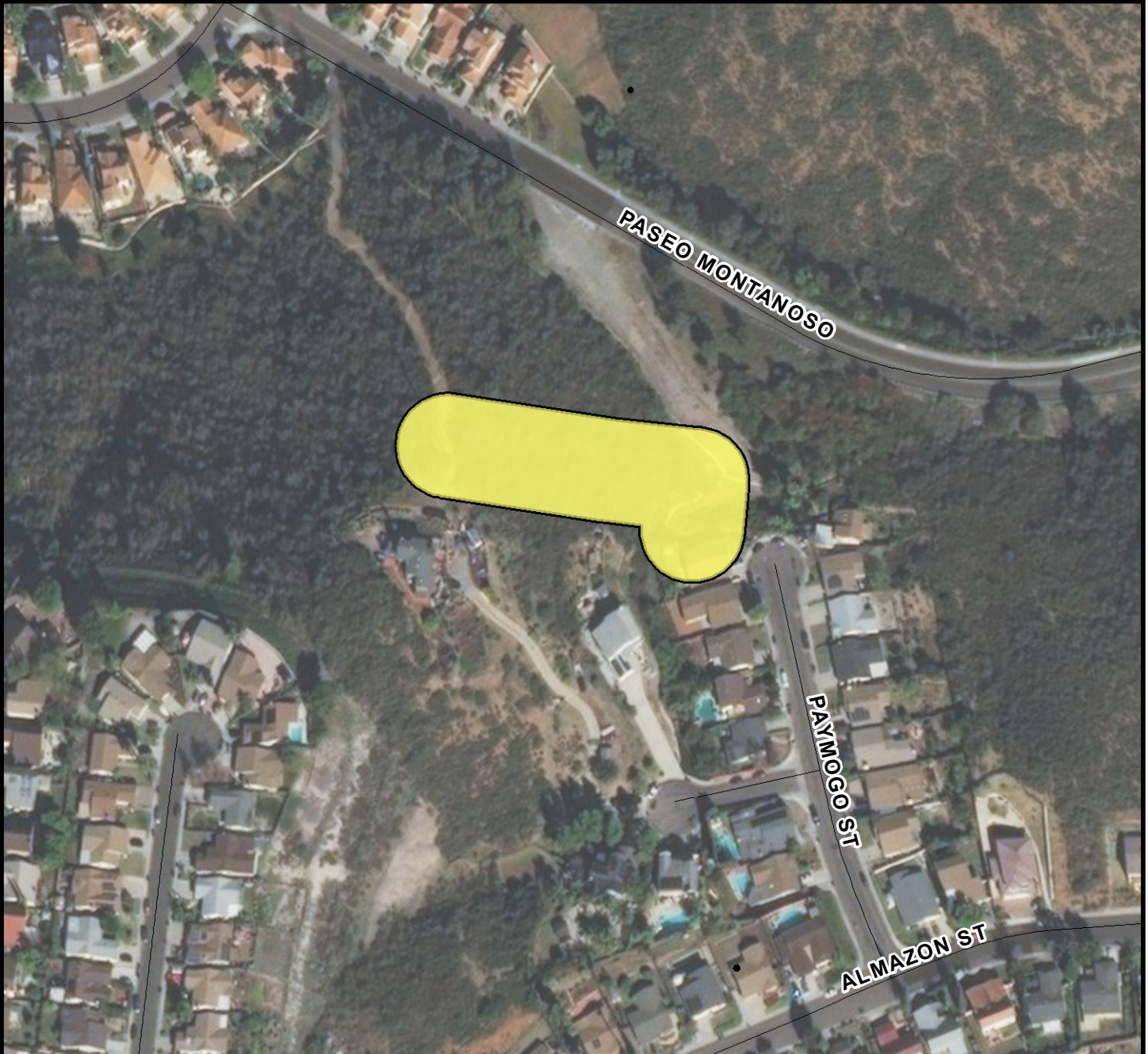
TRENCH LENGTH:	2,340 FT
SERVICE DROPS:	0
POWER POLE REMOVAL:	6
TRANSFORMER COUNT:	2
ESTIMATED COST:	\$ 1,281,591



THIS MAP/DATA IS PROVIDED WITHOUT WARRANTY OF ANY KIND, EITHER EXPRESSED OR IMPLIED, INCLUDING BUT NOT LIMITED TO, THE IMPLIED WARRANTIES OF MERCHANTABILITY AND FITNESS FOR A PARTICULAR PURPOSE.



COUNCIL DISTRICT 5
NEIGHBORHOOD: RANCHO BERNARDO
PLANNING COMMUNITY: RANCHO BERNARDO



SURCHARGE PROJECT
RCHB-S7: RANCHO BERNARDO SEGMENT 07

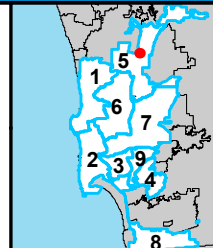
BOUNDARY LEGEND

-  Project Boundary
-  Parcel Boundaries



PROJECT DATA

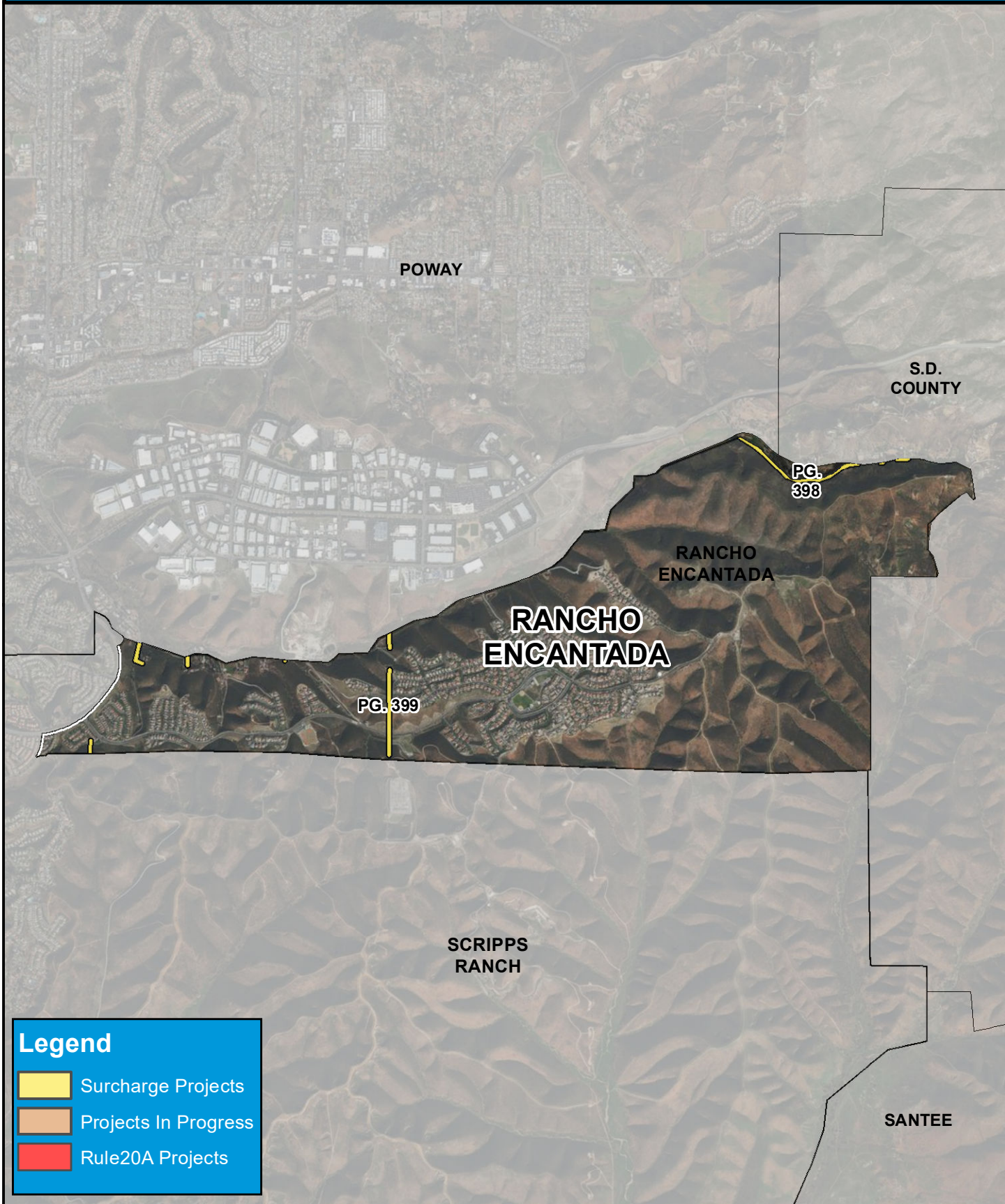
TRENCH LENGTH:	352 FT
SERVICE DROPS:	2
POWER POLE REMOVAL:	3
TRANSFORMER COUNT:	0
ESTIMATED COST:	\$ 384,016






SanGIS
© 2014 San Diego Council
 THIS MAP/DATA IS PROVIDED WITHOUT WARRANTY OF ANY KIND, EITHER EXPRESSED OR IMPLIED, INCLUDING BUT NOT LIMITED TO, THE IMPLIED WARRANTIES OF MERCHANTABILITY AND FITNESS FOR A PARTICULAR PURPOSE.



COUNCIL DISTRICT 5 NEIGHBORHOOD: RANCHO ENCANTADA KEYED MAP



Legend

-  Surcharge Projects
-  Projects In Progress
-  Rule20A Projects



COUNCIL DISTRICT 5
NEIGHBORHOOD: RANCHO ENCANTADA
PLANNING COMMUNITY: RANCHO ENCANTADA



SURCHARGE PROJECT
RCHE-S1: RANCHO ENCANTADA SEGMENT 01

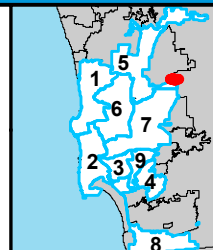
BOUNDARY LEGEND

- Project Boundary
- Parcel Boundaries



PROJECT DATA

TRENCH LENGTH:	4,657 FT
SERVICE DROPS:	1
POWER POLE REMOVAL:	20
TRANSFORMER COUNT:	1
ESTIMATED COST:	\$ 2,298,640



SanGIS
San Diego County
 THIS MAP/DATA IS PROVIDED WITHOUT WARRANTY OF ANY KIND, EITHER EXPRESSED OR IMPLIED, INCLUDING BUT NOT LIMITED TO, THE IMPLIED WARRANTIES OF MERCHANTABILITY AND FITNESS FOR A PARTICULAR PURPOSE.



COUNCIL DISTRICT 5
NEIGHBORHOOD: RANCHO ENCANTADA
PLANNING COMMUNITY: RANCHO ENCANTADA



SURCHARGE PROJECT
RCHB-S2: RANCHO ENCANTADA SEGMENT 02

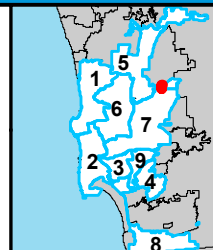
BOUNDARY LEGEND

-  Project Boundary
-  Parcel Boundaries



PROJECT DATA

TRENCH LENGTH:	2,719 FT
SERVICE DROPS:	0
POWER POLE REMOVAL:	5
TRANSFORMER COUNT:	0
ESTIMATED COST:	\$ 1,400,749



THIS MAP/DATA IS PROVIDED WITHOUT WARRANTY OF ANY KIND, EITHER EXPRESSED OR IMPLIED, INCLUDING BUT NOT LIMITED TO, THE IMPLIED WARRANTIES OF MERCHANTABILITY AND FITNESS FOR A PARTICULAR PURPOSE.



COUNCIL DISTRICT 5
NEIGHBORHOOD: RANCHO ENCANTADA
PLANNING COMMUNITY: RANCHO ENCANTADA



SURCHARGE PROJECT
RCHB-S3: RANCHO ENCANTADA SEGMENT 03

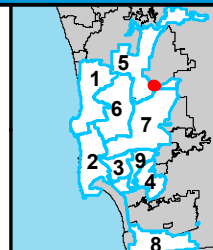
BOUNDARY LEGEND

-  Project Boundary
-  Parcel Boundaries



PROJECT DATA

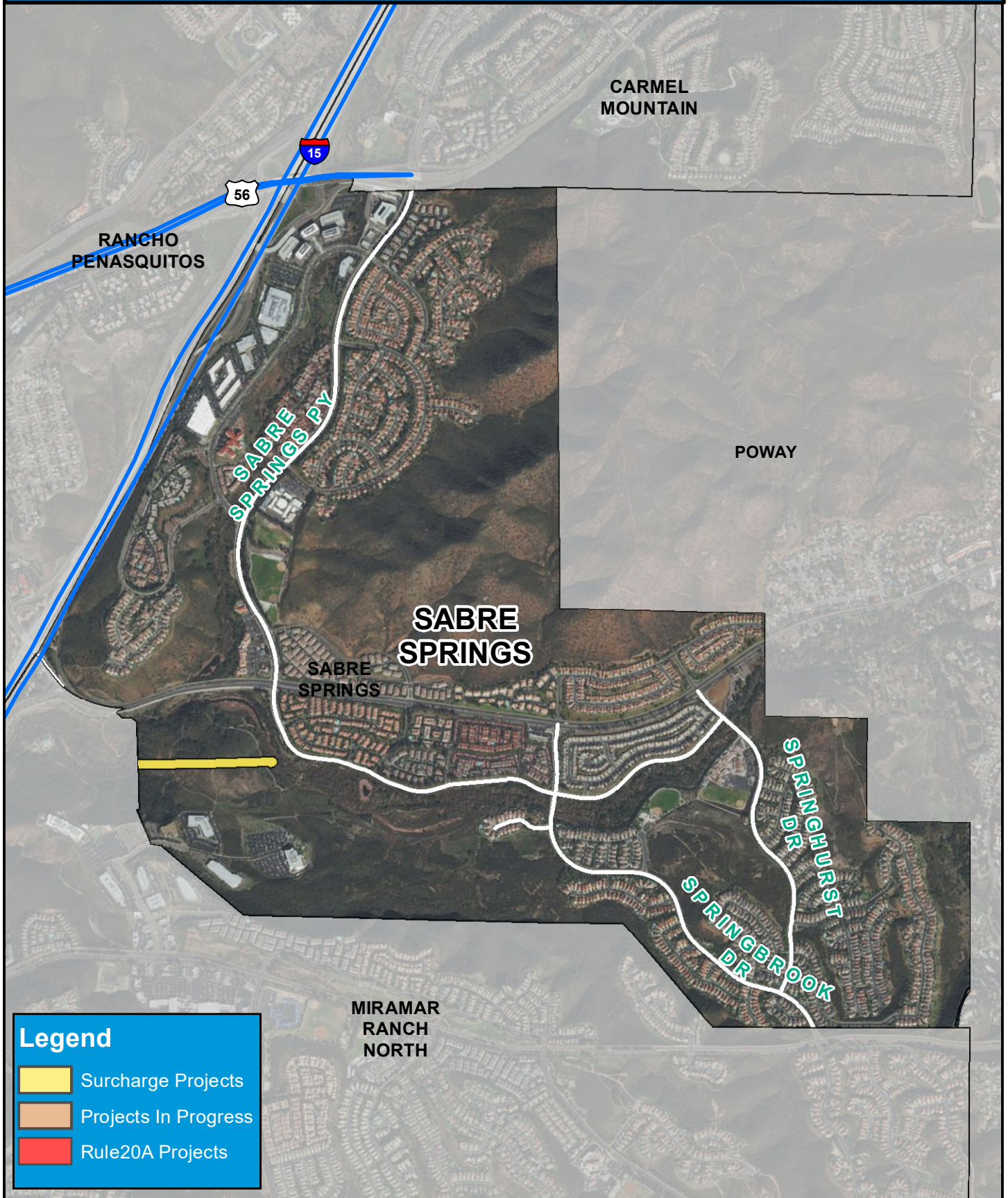
TRENCH LENGTH:	914 FT
SERVICE DROPS:	1
POWER POLE REMOVAL:	8
TRANSFORMER COUNT:	2
ESTIMATED COST:	\$ 688,048



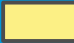


THIS MAP/DATA IS PROVIDED WITHOUT WARRANTY OF ANY KIND, EITHER EXPRESSED OR IMPLIED, INCLUDING BUT NOT LIMITED TO, THE IMPLIED WARRANTIES OF MERCHANTABILITY AND FITNESS FOR A PARTICULAR PURPOSE.



COUNCIL DISTRICT 5 NEIGHBORHOOD: SABRE SPRINGS KEYED MAP



Legend

-  Surcharge Projects
-  Projects In Progress
-  Rule20A Projects



COUNCIL DISTRICT 5
NEIGHBORHOOD: SABRE SPRINGS
PLANNING COMMUNITY: SABRE SPRINGS



SURCHARGE PROJECT
SSPG-S1: SABRE SPRINGS SEGMENT 01

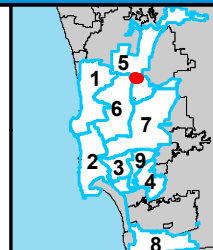
BOUNDARY LEGEND

-  Project Boundary
-  Parcel Boundaries



PROJECT DATA

TRENCH LENGTH:	4,975 FT
SERVICE DROPS:	0
POWER POLE REMOVAL:	16
TRANSFORMER COUNT:	0
ESTIMATED COST:	\$ 2,429,024



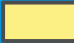


THIS MAP/DATA IS PROVIDED WITHOUT WARRANTY OF ANY KIND, EITHER EXPRESSED OR IMPLIED, INCLUDING BUT NOT LIMITED TO, THE IMPLIED WARRANTIES OF MERCHANTABILITY AND FITNESS FOR A PARTICULAR PURPOSE.



COUNCIL DISTRICT 5 NEIGHBORHOOD: SAN PASQUAL KEYED MAP

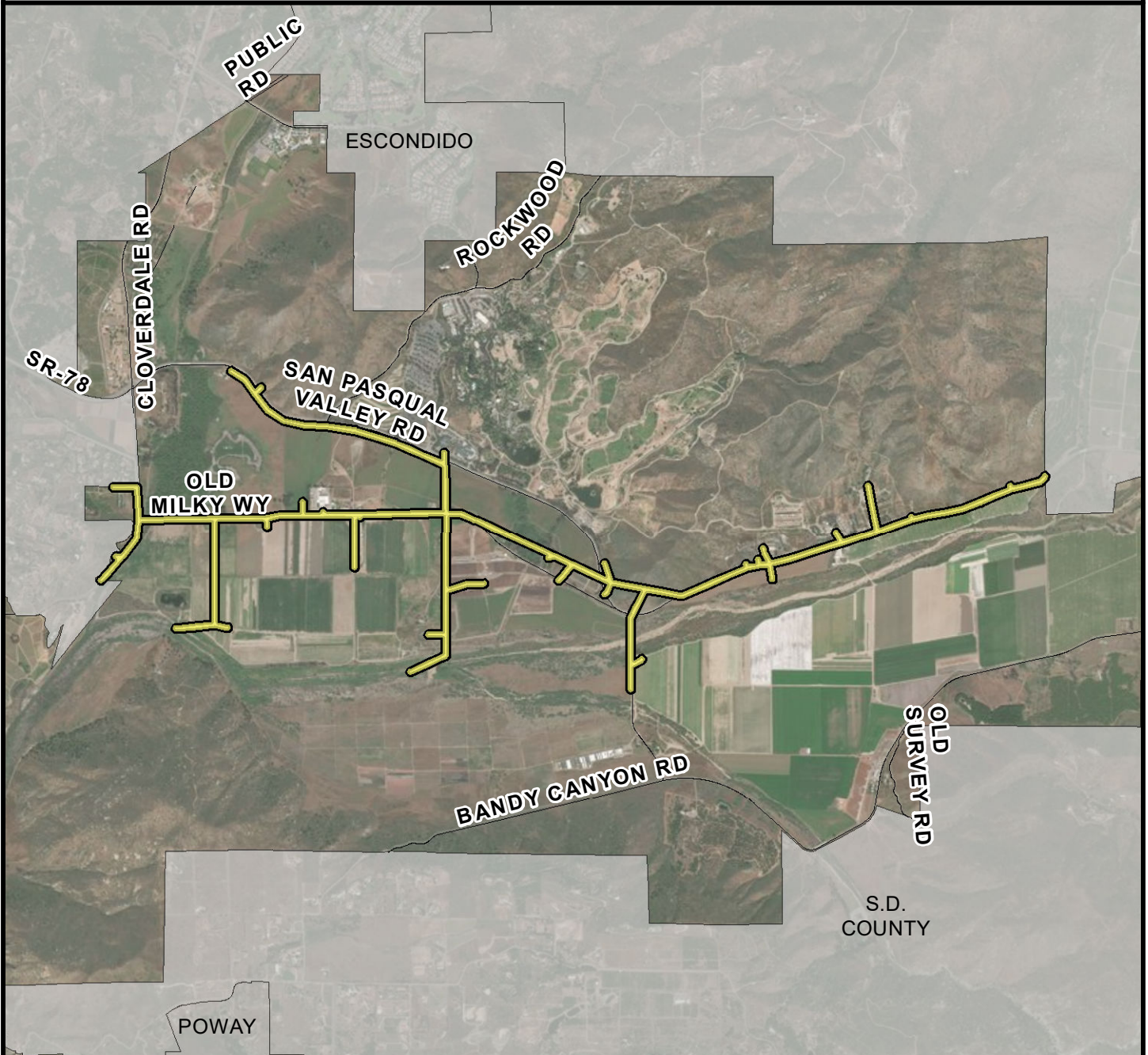


Legend

-  Surcharge Projects
-  Projects In Progress
-  Rule20A Projects



COUNCIL DISTRICT 5
NEIGHBORHOOD: SAN PASQUAL
PLANNING COMMUNITY: SAN PASQUAL



SURCHARGE PROJECT
SAPA-S1: SAN PASQUAL SEGMENT 01

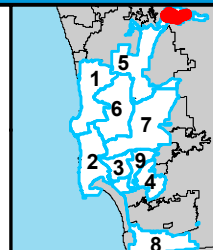
BOUNDARY LEGEND

- Project Boundary
- Parcel Boundaries



PROJECT DATA

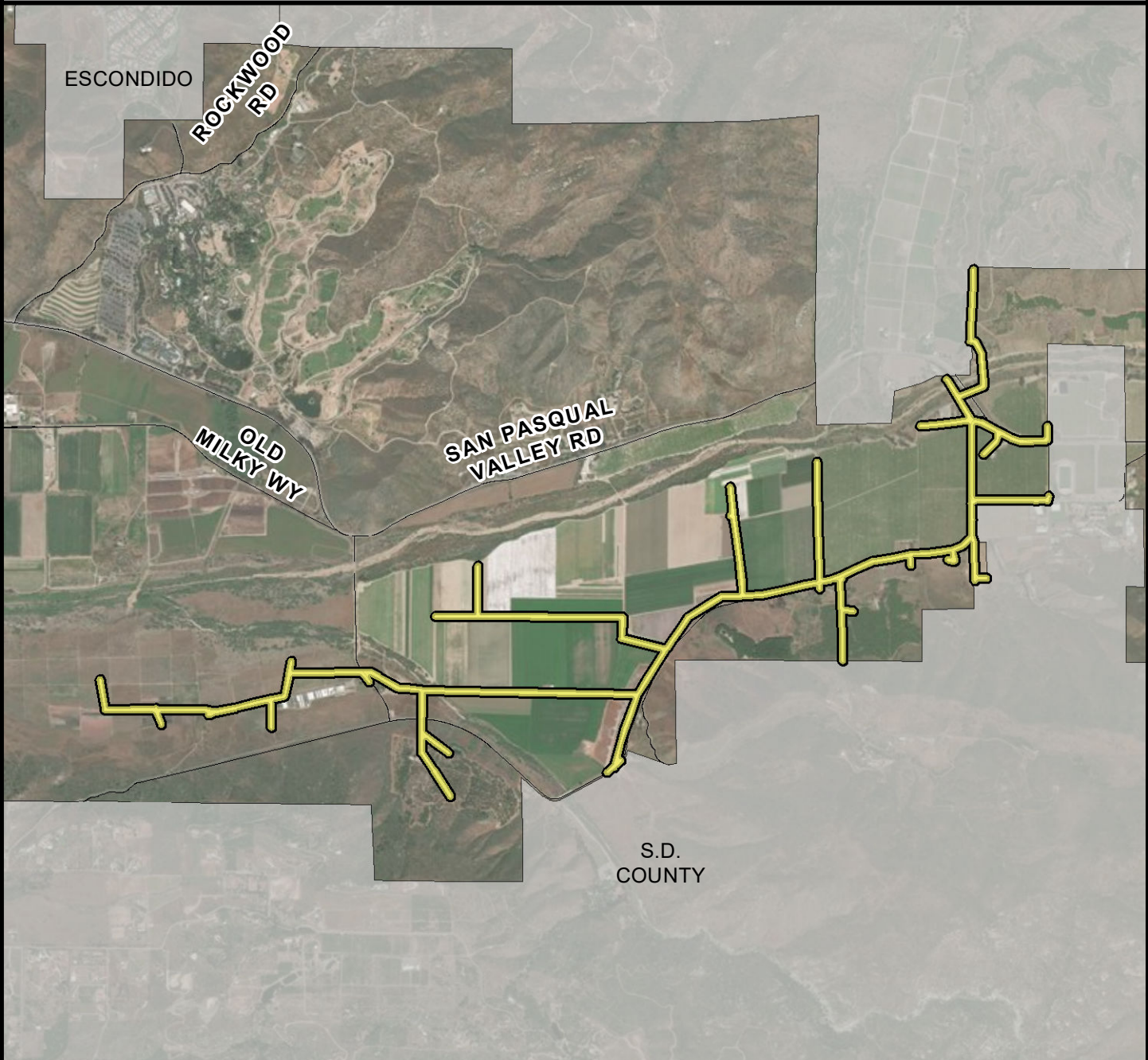
TRENCH LENGTH:	41,455 FT
SERVICE DROPS:	2
POWER POLE REMOVAL:	161
TRANSFORMER COUNT:	35
ESTIMATED COST:	\$ 19,812,329



THIS MAP/DATA IS PROVIDED WITHOUT WARRANTY OF ANY KIND, EITHER EXPRESSED OR IMPLIED, INCLUDING BUT NOT LIMITED TO, THE IMPLIED WARRANTIES OF MERCHANTABILITY AND FITNESS FOR A PARTICULAR PURPOSE.



COUNCIL DISTRICT 5
NEIGHBORHOOD: SAN PASQUAL
PLANNING COMMUNITY: SAN PASQUAL



SURCHARGE PROJECT
SAPA-S2: SAN PASQUAL SEGMENT 02

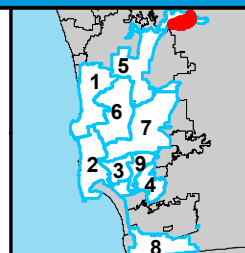
BOUNDARY LEGEND

-  Project Boundary
-  Parcel Boundaries



PROJECT DATA

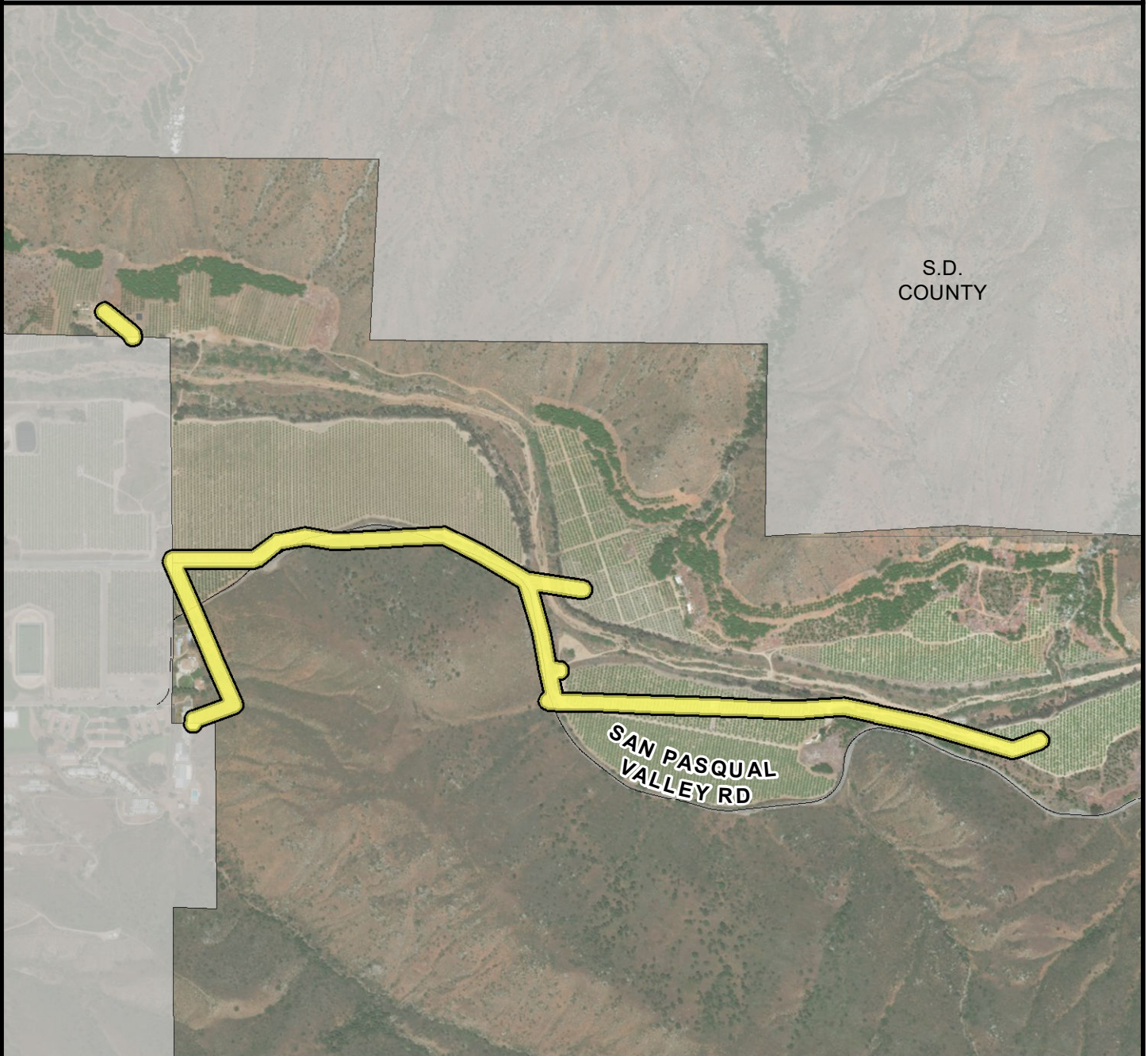
TRENCH LENGTH:	44,772 FT
SERVICE DROPS:	3
POWER POLE REMOVAL:	172
TRANSFORMER COUNT:	38
ESTIMATED COST:	\$ 21,363,159



SanGIS
 San Diego County
 THIS MAP/DATA IS PROVIDED WITHOUT WARRANTY OF ANY KIND, EITHER EXPRESSED OR IMPLIED, INCLUDING BUT NOT LIMITED TO, THE IMPLIED WARRANTIES OF MERCHANTABILITY AND FITNESS FOR A PARTICULAR PURPOSE.



COUNCIL DISTRICT 5
NEIGHBORHOOD: SAN PASQUAL
PLANNING COMMUNITY: SAN PASQUAL



SURCHARGE PROJECT
SAPA-S3: SAN PASQUAL SEGMENT 03

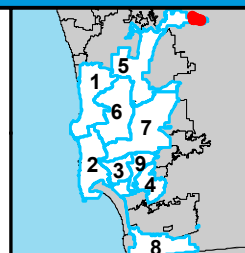
BOUNDARY LEGEND

-  Project Boundary
-  Parcel Boundaries



PROJECT DATA

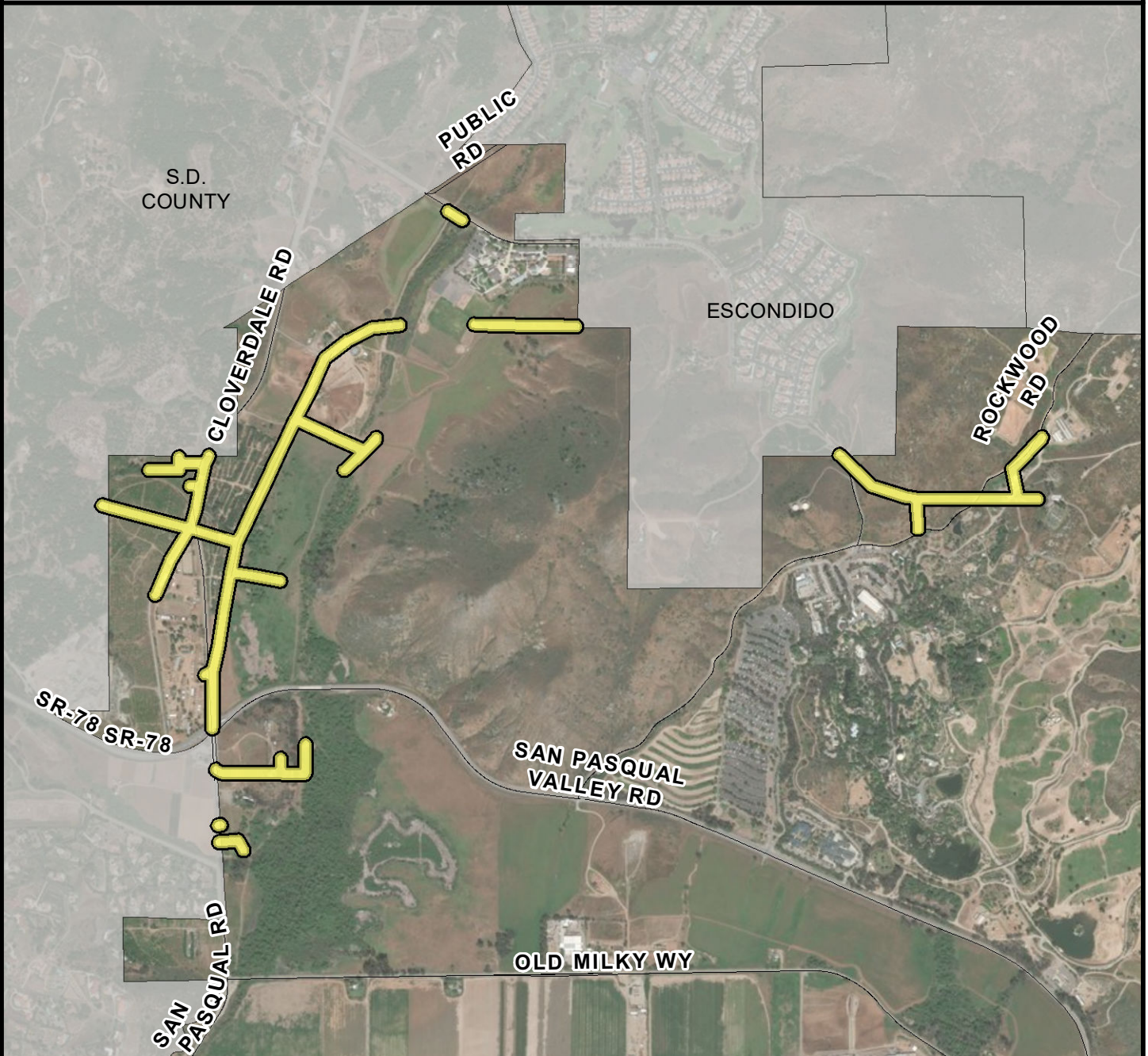
TRENCH LENGTH:	9,494 FT
SERVICE DROPS:	0
POWER POLE REMOVAL:	38
TRANSFORMER COUNT:	10
ESTIMATED COST:	\$ 4,766,586



SanGIS
 San Diego County
 THIS MAP/DATA IS PROVIDED WITHOUT WARRANTY OF ANY KIND, EITHER EXPRESSED OR IMPLIED, INCLUDING BUT NOT LIMITED TO, THE IMPLIED WARRANTIES OF MERCHANTABILITY AND FITNESS FOR A PARTICULAR PURPOSE.



COUNCIL DISTRICT 5
NEIGHBORHOOD: SAN PASQUAL
PLANNING COMMUNITY: SAN PASQUAL



SURCHARGE PROJECT
SAPA-S4: SAN PASQUAL SEGMENT 04

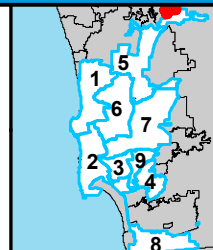
BOUNDARY LEGEND

-  Project Boundary
-  Parcel Boundaries



PROJECT DATA

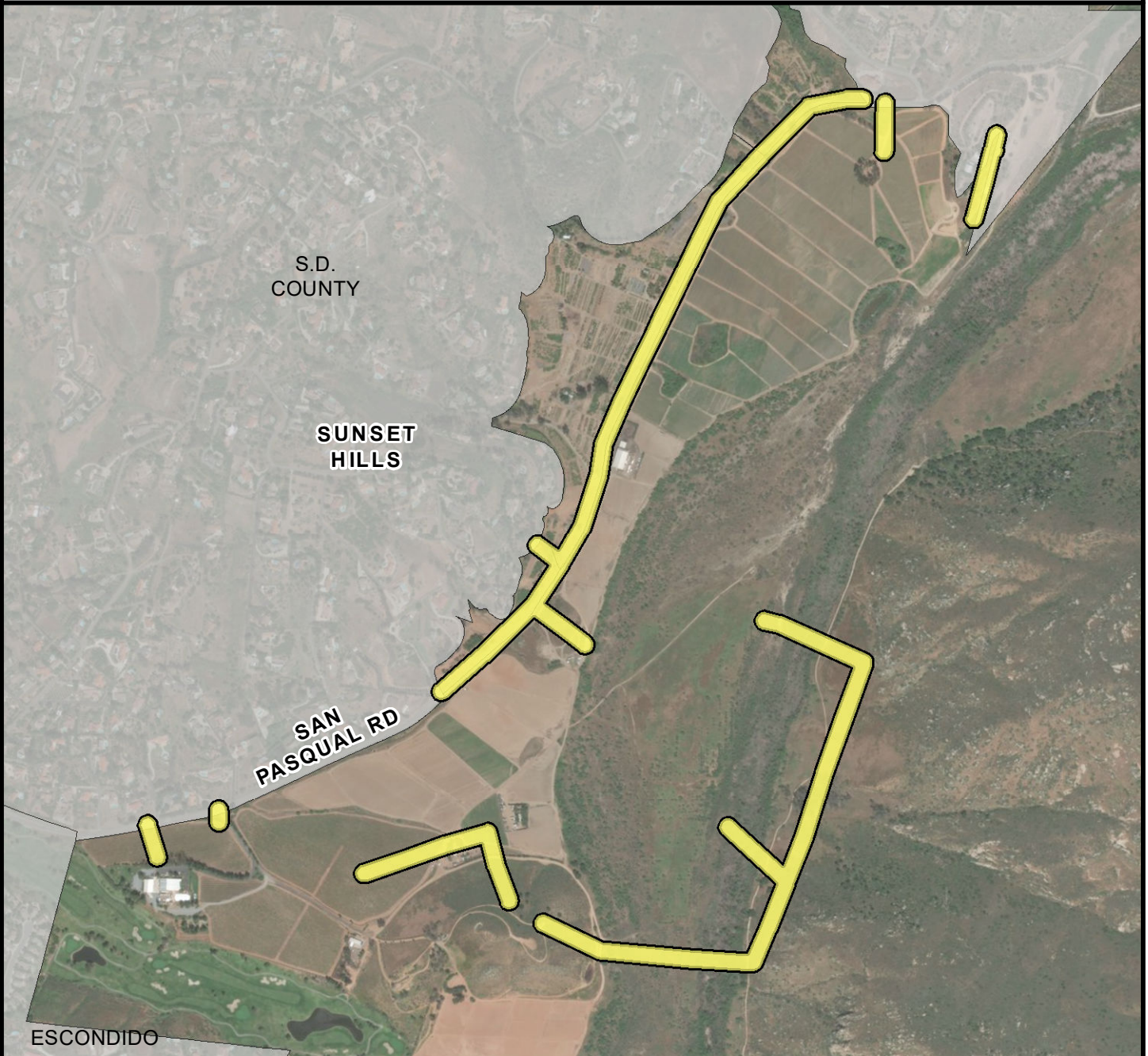
TRENCH LENGTH:	16,717 FT
SERVICE DROPS:	1
POWER POLE REMOVAL:	64
TRANSFORMER COUNT:	15
ESTIMATED COST:	\$ 8,172,985



THIS MAP/DATA IS PROVIDED WITHOUT WARRANTY OF ANY KIND, EITHER EXPRESSED OR IMPLIED, INCLUDING BUT NOT LIMITED TO, THE IMPLIED WARRANTIES OF MERCHANTABILITY AND FITNESS FOR A PARTICULAR PURPOSE.



COUNCIL DISTRICT 5
NEIGHBORHOOD: SAN PASQUAL
PLANNING COMMUNITY: SAN PASQUAL



SURCHARGE PROJECT
SAPA-S5: SAN PASQUAL SEGMENT 05

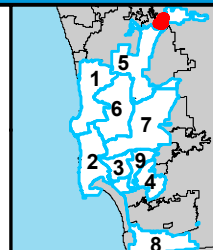
BOUNDARY LEGEND

-  Project Boundary
-  Parcel Boundaries



PROJECT DATA

TRENCH LENGTH:	13,634 FT
SERVICE DROPS:	0
POWER POLE REMOVAL:	44
TRANSFORMER COUNT:	13
ESTIMATED COST:	\$ 6,648,587






SanGIS
© 2014 San Diego County
 THIS MAP/DATA IS PROVIDED WITHOUT WARRANTY OF ANY KIND, EITHER EXPRESSED OR IMPLIED, INCLUDING BUT NOT LIMITED TO, THE IMPLIED WARRANTIES OF MERCHANTABILITY AND FITNESS FOR A PARTICULAR PURPOSE.



COUNCIL DISTRICT 5 NEIGHBORHOOD: TORREY HIGHLANDS KEYED MAP



Legend

-  Surcharge Projects
-  Projects In Progress
-  Rule20A Projects


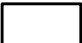



COUNCIL DISTRICT 5
NEIGHBORHOOD: TORREY HIGHLANDS
PLANNING COMMUNITY: TORREY HIGHLANDS



SURCHARGE PROJECT
THLD-S1: TORREY HIGHLANDS SEGMENT 01

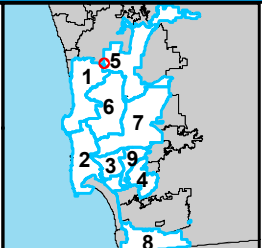
BOUNDARY LEGEND

	Project Boundary
	Parcel Boundaries

N 

PROJECT DATA

TRENCH LENGTH:	1,276 FT
SERVICE DROPS:	1
POWER POLE REMOVAL:	7
TRANSFORMER COUNT:	2
ESTIMATED COST:	\$ 831,088



SanGIS
© 2014 San Diego County
 THIS MAP/DATA IS PROVIDED WITHOUT WARRANTY OF ANY KIND, EITHER EXPRESSED OR IMPLIED, INCLUDING BUT NOT LIMITED TO, THE IMPLIED WARRANTIES OF MERCHANTABILITY AND FITNESS FOR A PARTICULAR PURPOSE.