

ORDINANCE NUMBER 0-\_\_\_\_\_ (NEW SERIES)

DATE OF FINAL PASSAGE \_\_\_\_\_

AN ORDINANCE OF THE COUNCIL OF THE CITY OF  
SAN DIEGO DESIGNATING CHOLLAS CREEK WATERSHED AS  
A SAN DIEGO REGIONAL PARK PURSUANT TO  
SAN DIEGO CITY CHARTER SECTION 55.2(a)(9).

WHEREAS, Chollas Creek watershed extends from La Mesa and Lemon Grove into areas of the City of San Diego located mostly to the south of State Route 94; and

WHEREAS, the Chollas Creek watershed traverses the neighborhoods of City Heights, Eastern Area, Encanto, Southeastern San Diego, and Barrio Logan and is an asset to the neighborhoods it serves as well as to residents and visitors from across the City and region; and

WHEREAS, the Chollas Creek watershed is an important regional asset, characterized by a rich history and unparalleled historical, biological, and cultural resources; and

WHEREAS, Chollas Creek was once well-known to Native Americans, who used it for settlement and as a major trail through the region; and

WHEREAS, Chollas Creek has a long geological history evidenced by a number of paleontological sites; and

WHEREAS, the Chollas Creek Enhancement Program identifies a vision for the Chollas Creek watershed as a linear park encompassing multiple branches of Chollas Creek, with design that results in park space for the community, restored creek channels, and providing active linkages through the communities; and

WHEREAS, Chollas Creek's distinctive natural, cultural, and historical resources are a regional resource; and

WHEREAS, the Chollas Creek watershed provides endless opportunities to bring diverse neighborhoods together through a watershed-wide system of trails and parks, while also serving as an incredible visitor attraction; and

WHEREAS, the Parks Master Plan calls for the designation of new regional parks in accordance with the City Charter, in areas that lack easy access to existing regional parks particularly in Communities of Concern; and

WHEREAS, Charter section 55.2(a)(9) defines San Diego Regional Parks as those parks that serve regional residents and/or visitor populations as determined by ordinance of the City Council and the City Council determines that Chollas Creek is worthy of such a regional designation; NOW, THEREFORE,

BE IT ORDAINED, by the Council of the City of San Diego as follows:

Section 1. That Chollas Creek watershed, traversing the neighborhoods of City Heights, Eastern Area, Encanto, Southeastern San Diego, and Barrio Logan, and more particularly illustrated in Exhibit A, is hereby designated a Regional Park within the meaning of San Diego Charter section 55.2(a)(9) and is entitled to all benefits that inure to parks of that designation.

Section 2. That a full reading of this ordinance is dispensed with prior to its passage, a written or printed copy having been made available to the City Council and the public prior to the day of its passage.

Section 3. That this ordinance shall take effect and be in force on the thirtieth day from after its final passage.

APPROVED: \_\_\_\_\_, City Attorney

By \_\_\_\_\_

I hereby certify that the foregoing Ordinance was passed by the Council of San Diego,  
at this meeting of \_\_\_\_\_

ELIZABETH S. MAYLAND

By \_\_\_\_\_

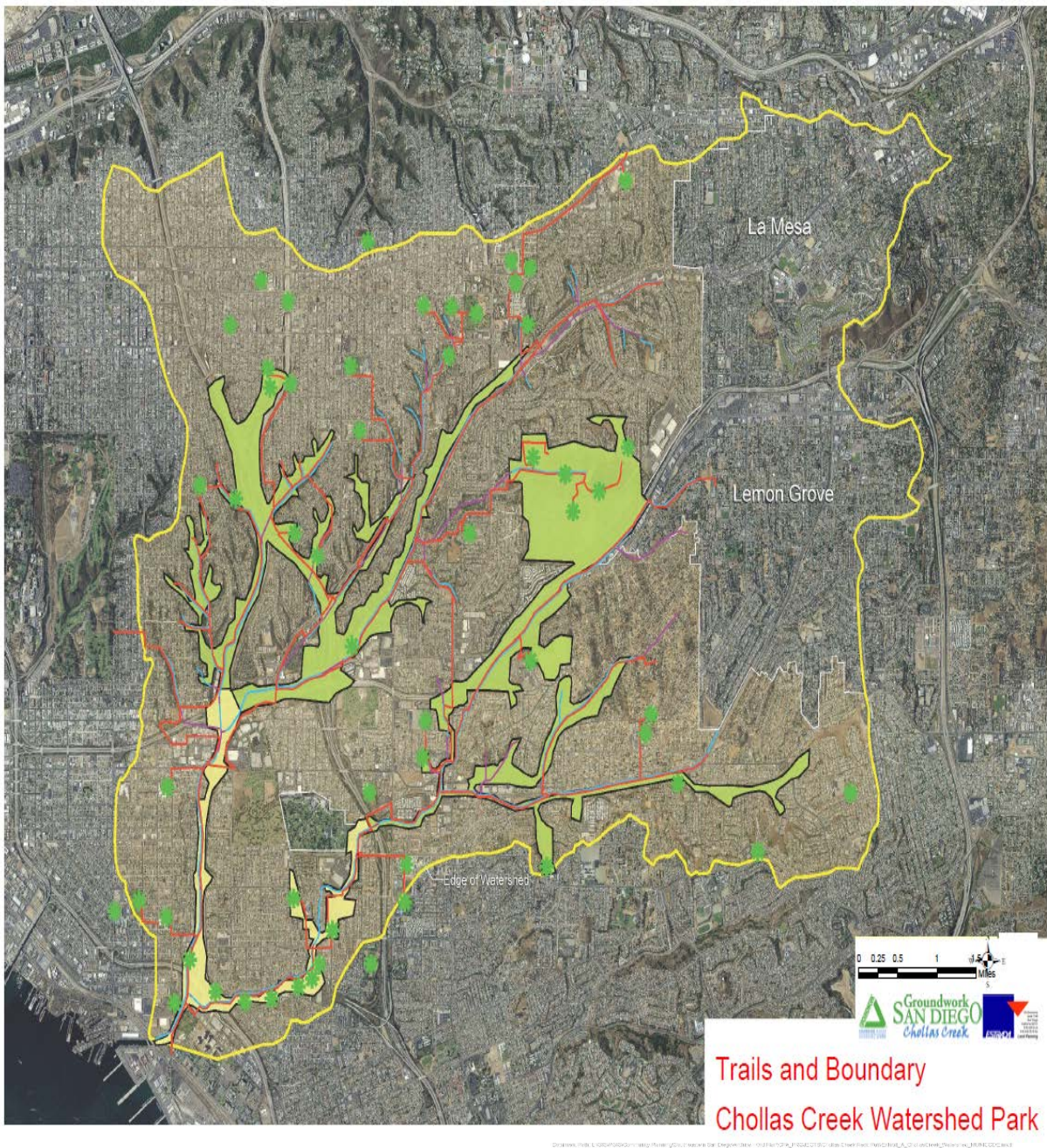
Deputy City Clerk

Approved: \_\_\_\_\_

\_\_\_\_\_

Todd Gloria, Mayor

Vetoed: \_\_\_\_\_



**Exhibit A**  
**Approximate Chollas Creek Watershed Regional Park Location**