

An aerial photograph of University City, California, featuring prominent high-rise buildings like the Northern Trust building. A semi-transparent white rectangular box is centered over the image, containing the title text. A large yellow triangle is positioned on the left side of the image, partially overlapping the text box.

# UNIVERSITY

COMMUNITY PLAN UPDATE **COMMUNITY ATLAS**



## AGENDA

**Tuesday, February 12, 2019**

- |        |      |   |
|--------|------|---|
| Item 1 | 5:30 | CALL TO ORDER / ROLL CALL BY CHAIR: Andy Wiese  |
| Item 2 | 5:35 | NON-AGENDA PUBLIC COMMENT: Two minutes per speaker.   |
| Item 3 | 5:50 | INFO ITEM – Community Atlas Presentation  |
| Item 4 | 6:05 | INFO ITEM – September 26, 2018 Open House Summary   |
| Item 5 | 6:45 | NEXT STEPS: <ul style="list-style-type: none"><li>- March meeting: Community Vision &amp; Guiding Principles Discussion</li><li>- Day/Time for March CPUS and future subcommittee meetings.</li></ul> |
| Item 6 | 7:00 | ADJOURNMENT   |

## This Community Atlas will be used as a reference for:

- Facilitating community input on planning issues, priorities, and visions for the future
- Evaluating policy issues and options, and preparing alternative land use and transportation concepts
- Formulating policies and implementation actions for the community plan update
- Creating the environmental setting portion of the Environmental Impact Report for the community plan.



# Community Atlas Contents

1. Introduction & Overview
2. Land Use & Development
3. Economic Setting
4. Urban Form
5. Mobility
6. Natural Environment & Open Space
7. Environmental Hazards & Community Health



# Community Atlas Contents

1. Introduction & Overview
2. Land Use & Development
3. Economic Setting
4. Urban Form
5. Mobility
6. Natural Environment & Open Space
7. Environmental Hazards & Community Health





# Regional Location

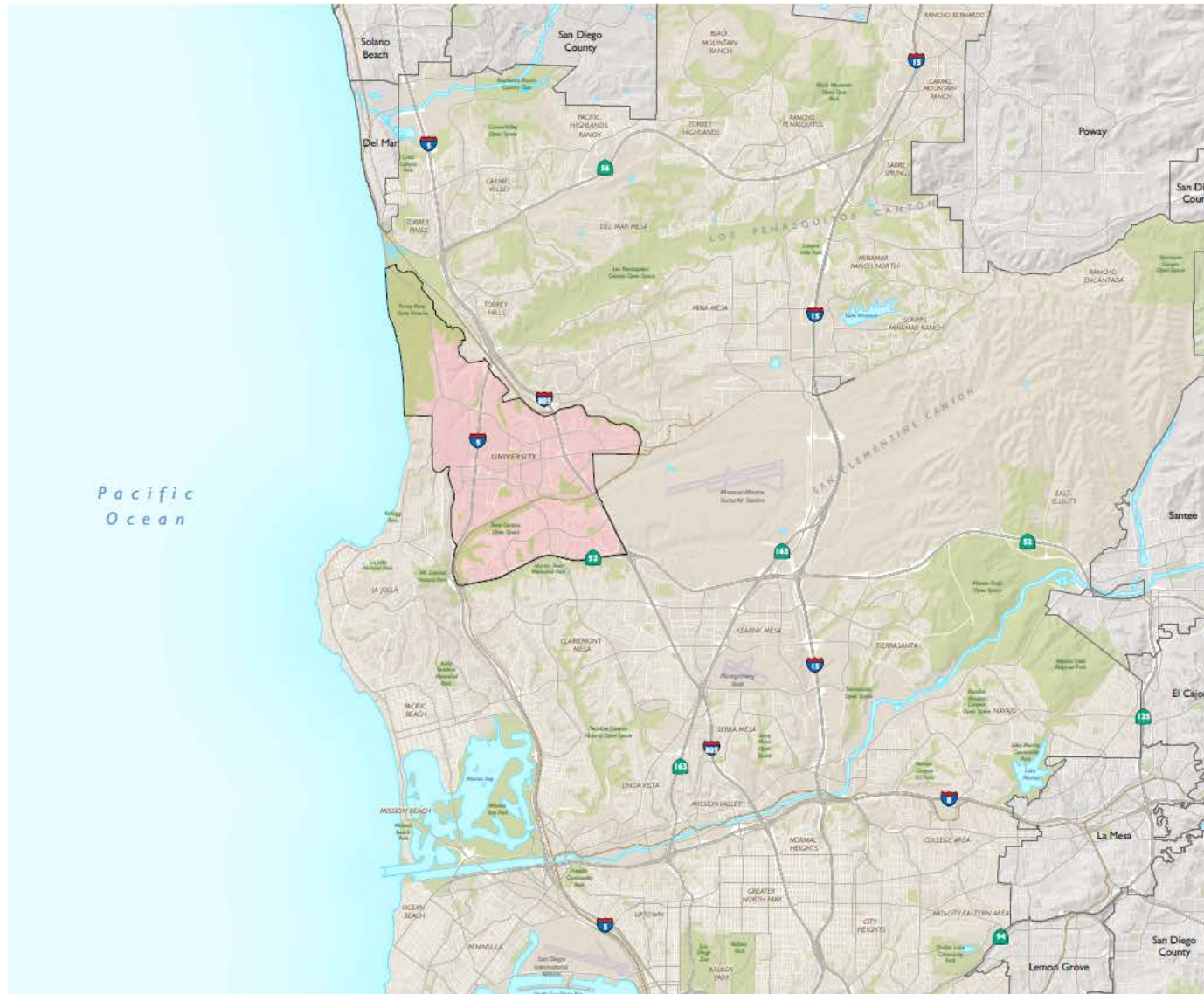


Figure 1-1  
UNIVERSITY COMMUNITY PLAN UPDATE  
Regional Location

- University Community Plan Boundary
- City of San Diego
- Parks and Open Space
- Water Features
- Municipal Boundaries
- Freeways
- Major Roads
- Railroads

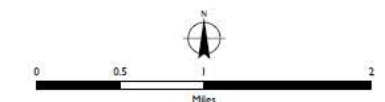


Source: City of San Diego, 2018; SANDAG, 2018; Dyett & Bhatia, 2018.

# Planning Area



Figure 1-2  
UNIVERSITY COMMUNITY PLAN UPDATE  
**Planning Area**



Source: City of San Diego, 2018; SANDAG, 2018; Dyett & Bhada, 2018.

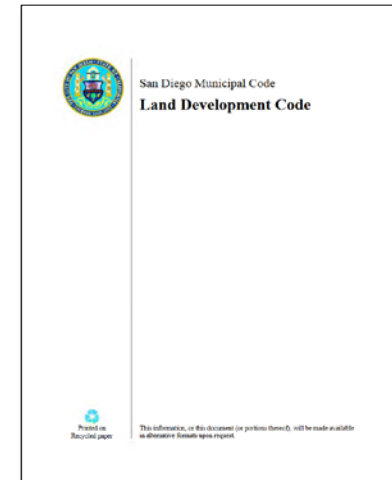
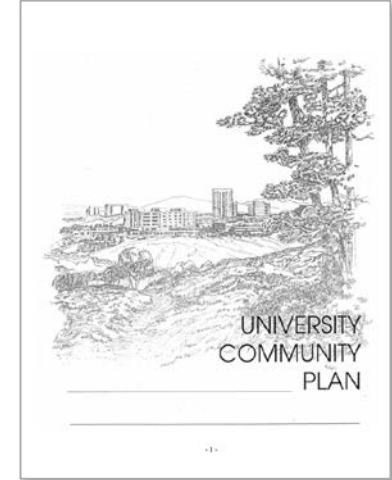
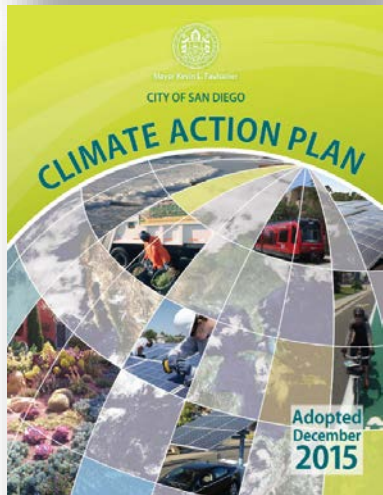
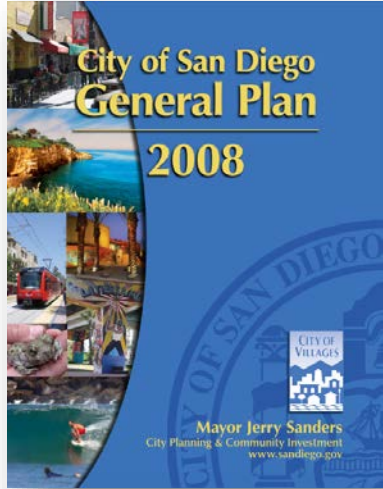


# Guiding Planning Documents

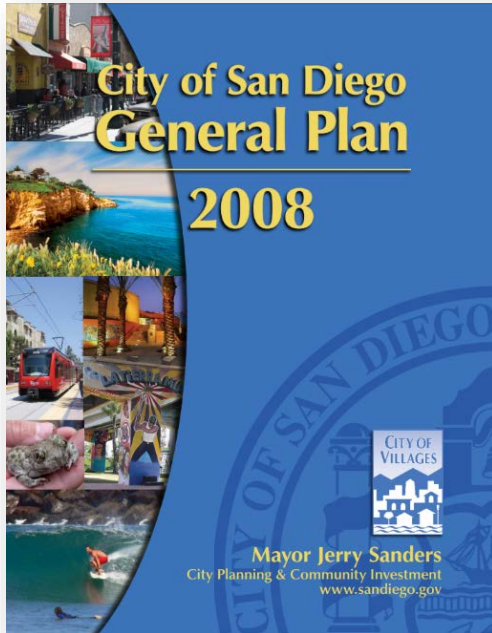




# Guiding Planning Documents



# Guiding Planning Documents



## City of San Diego General Plan

The City's General Plan is its constitution for development. It is comprised of 10 elements that provide a comprehensive slate of citywide policies and further the City of Villages smart growth strategy for growth and development.

Land Use & Community Planning . Mobility . Urban Design . Economic Prosperity . Public Facilities,  
Services & Safety . Recreation . Conservation . Noise . Historic Preservation . Housing



## Climate Action Plan

With the goal of creating a cleaner San Diego for future generations, the City of San Diego's Climate Action Plan (CAP) calls for eliminating half of all greenhouse gas emissions in the City and aim for all electricity used in the city to be from renewable sources by 2035.





## CLIMATE ACTION PLAN STRATEGIES

### 1 ENERGY & WATER EFFICIENT BUILDINGS



Green building techniques include improving the efficiency of mechanical and electrical systems; using energy-efficient lighting; and using cool roofing materials. This strategy will be achieved through a mix of regulations and incentives for property owners.

### 2 CLEAN & RENEWABLE ENERGY



On-site generation of energy and installing large-scale renewables, such as wind and solar, will reduce the burning of fossil fuels. This strategy will also support local job creation.

### 3 BICYCLING, WALKING, TRANSIT & LAND USE



Promoting a compact, mixed-use urban form; designing streets to make it safer and attractive for people to get around with a car; and managing parking are examples of measures that support reducing vehicle miles travelled (VMTs) and improving mobility.

### 4 ZERO WASTE



Options for managing waste including source reduction, increased recycling, and gas capture. The goal for the City is to achieve a 75 percent waste diversion rate by 2020. The City also has a goal to strive for Zero Waste disposal by 2040.

### 5 CLIMATE RESILIENCY



Climate resiliency entails developing programs, policies, and processes that are not rigid or static, but rather flexible allowing change to accommodate unexpected events and shocks and continue to function effectively.



# Existing Community Plan

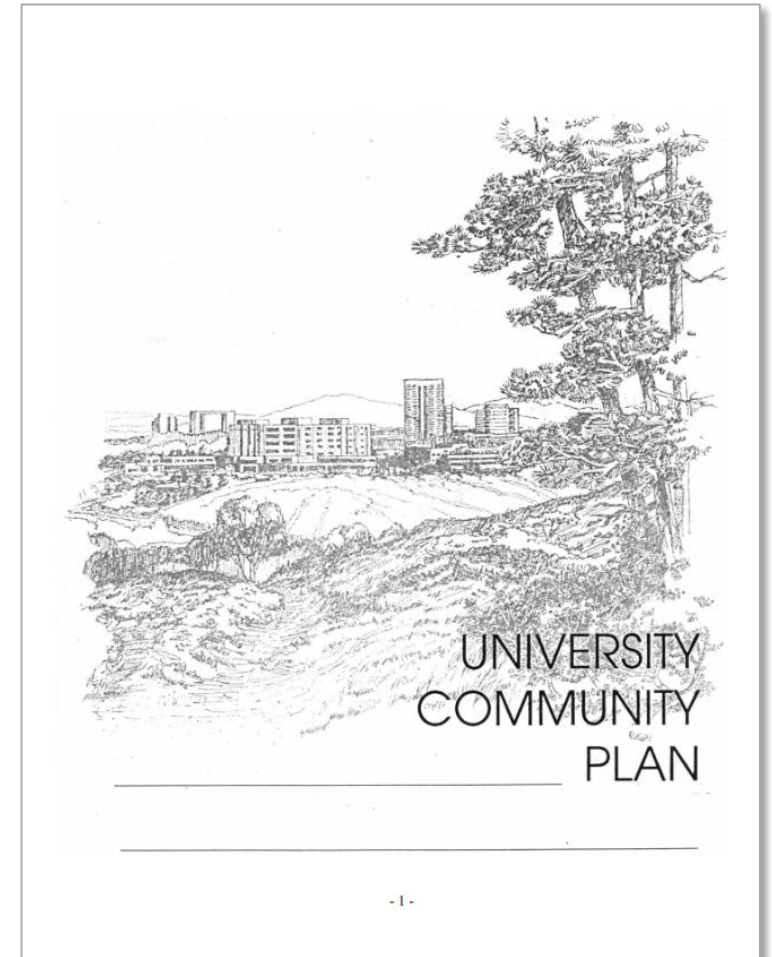
**Adopted In 1987**

## **Overall Community Goals:**

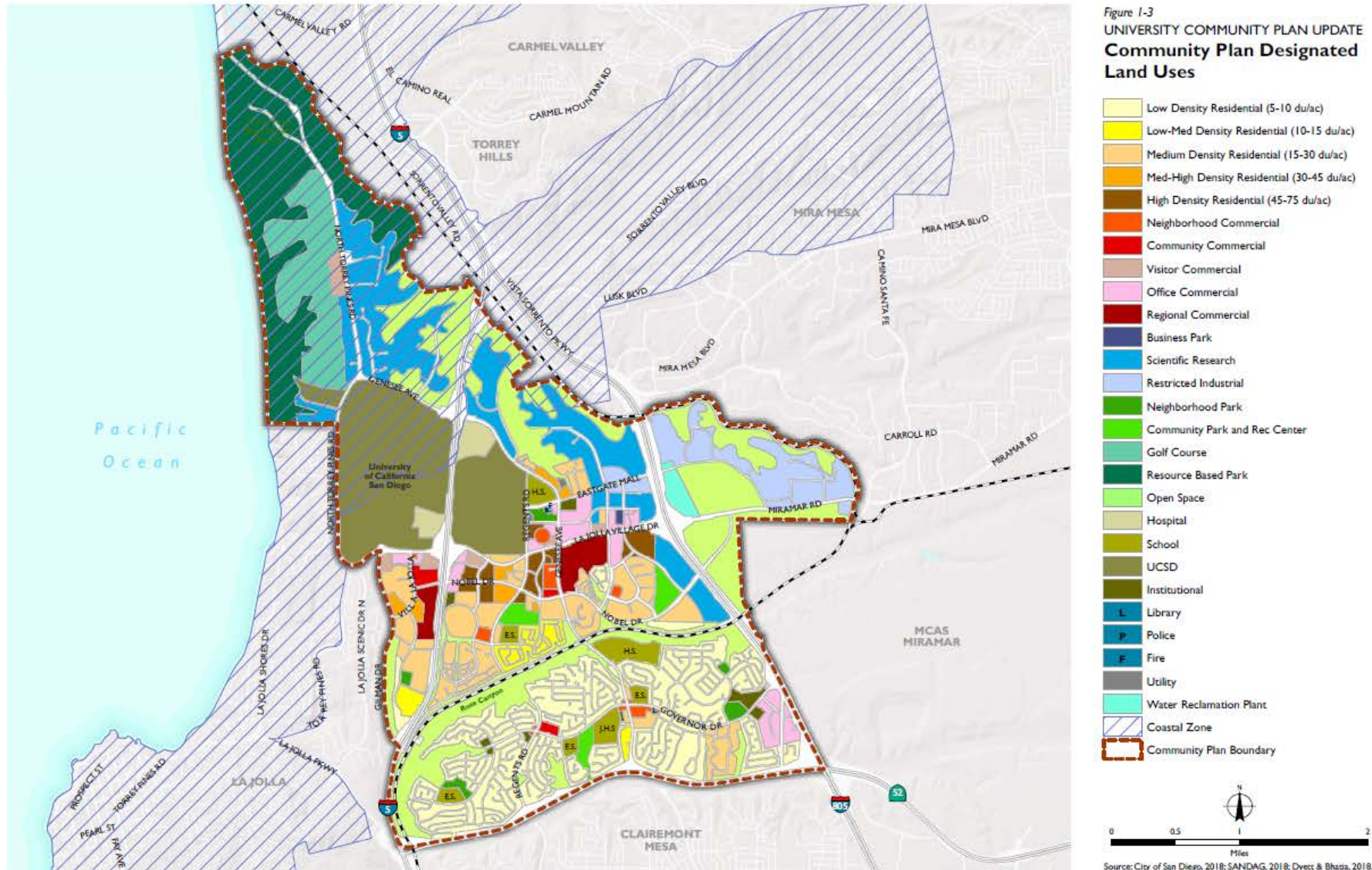
- Cohesive Development with UCSD
- Create a Self Sufficient Balanced Community
- Equitable Allocation of Development Intensity
- Ensuring a Workable Circulation System

## **Amendments:**

- 18 Amendments Since Plan Adoption
- 3 Amendments Currently Under Review

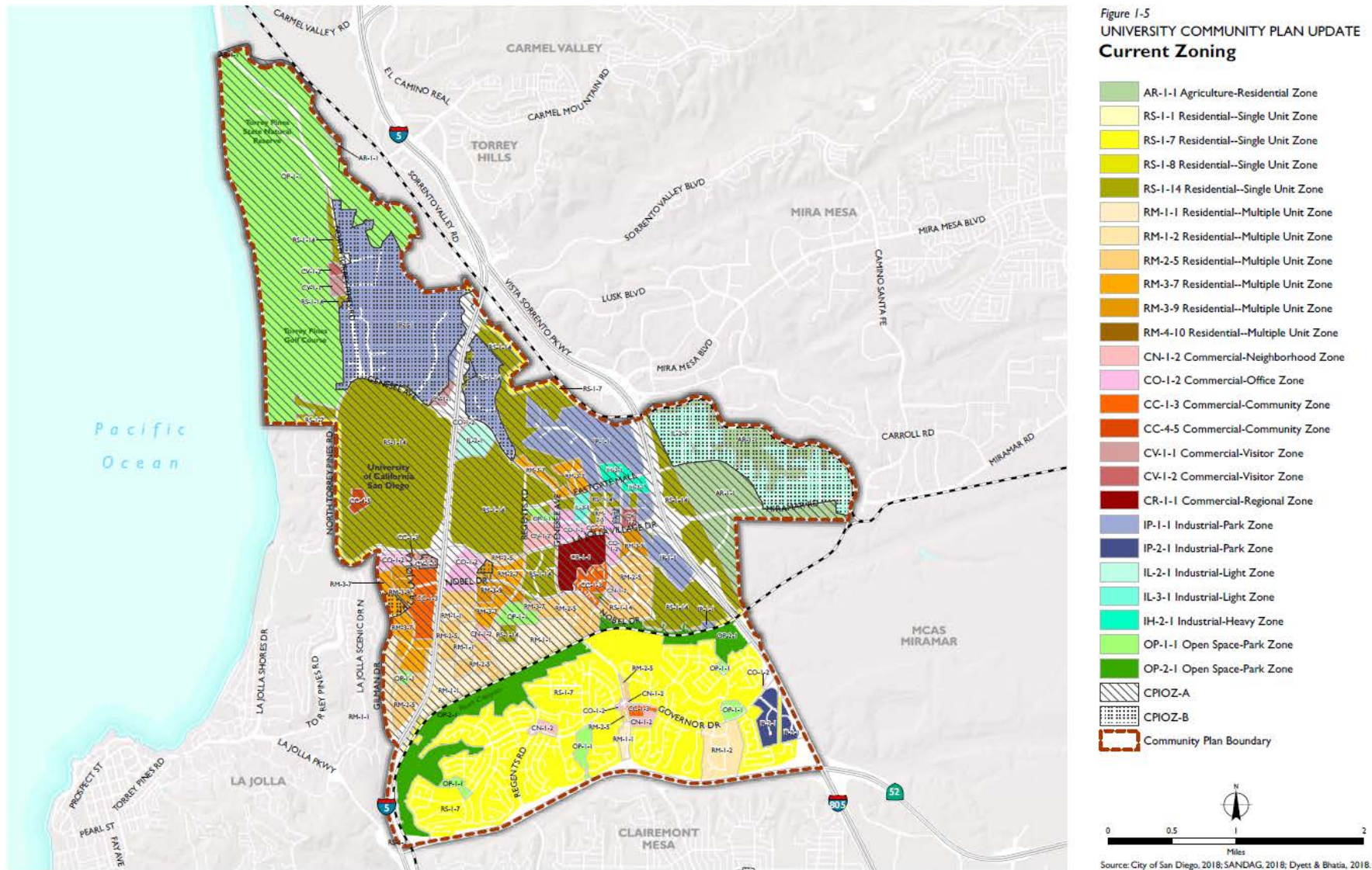


# Community Plan Designated Land Uses





# Land Development Code & Zoning



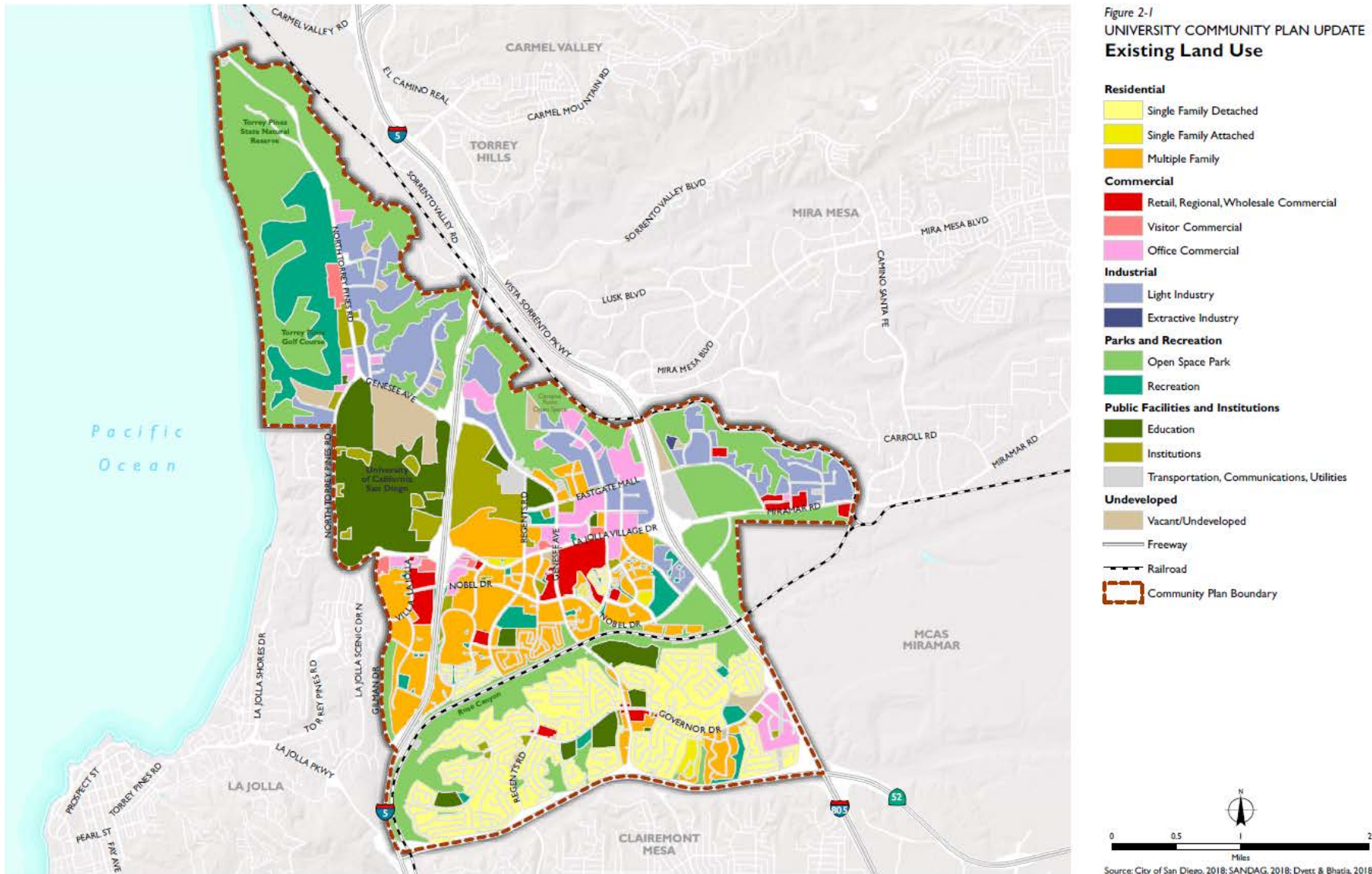
# Community Atlas Contents

1. Introduction & Overview
2. Land Use & Development
3. Economic Setting
4. Urban Form
5. Mobility
6. Natural Environment & Open Space
7. Environmental Hazards & Community Health



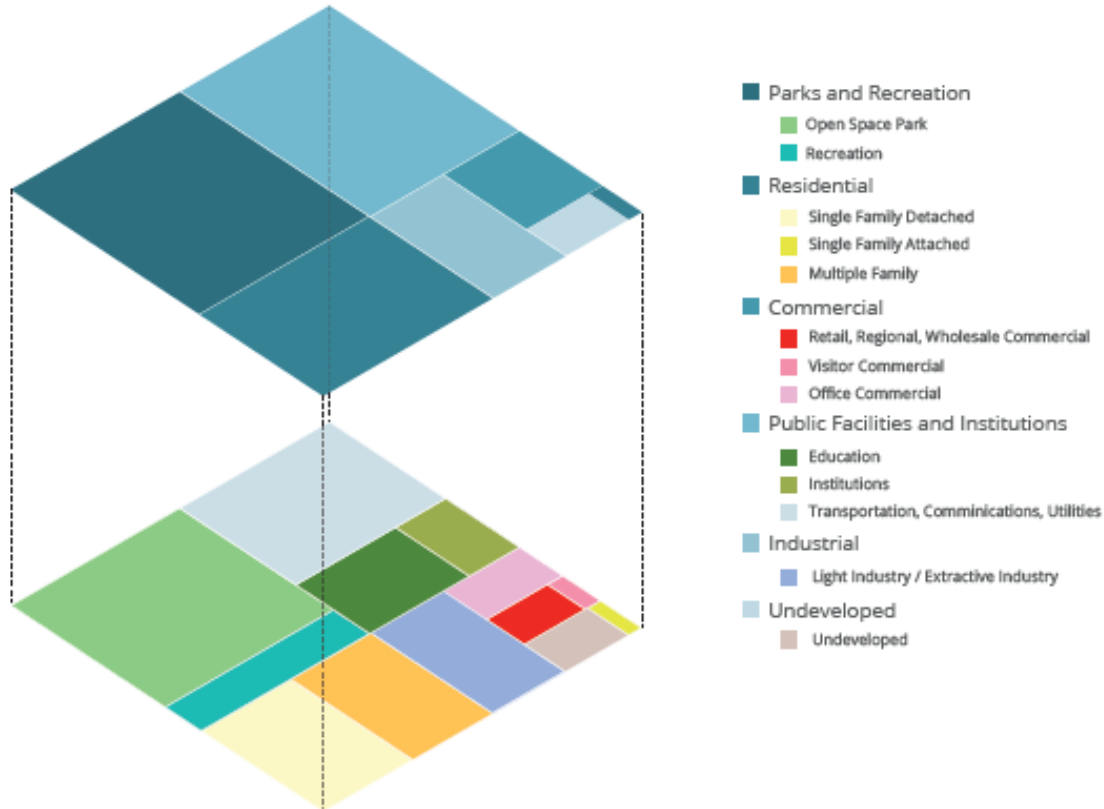


# Existing Land Use



# Existing Land Use

**Chart 2-1: Existing Land Use**



Source: City of San Diego, 2018; SANDAG, 2018

**Table 2-1: Existing Land Use**

Land Use	Acres	Percent
<b>Residential</b>	<b>1,860</b>	<b>21%</b>
Single-Family Detached	956	11%
Single-Family Attached	47	1%
Multiple Family	857	10%
<b>Commercial</b>	<b>539</b>	<b>6%</b>
Retail, Regional, Wholesale Commercial	201	2%
Visitor Commercial	50	1%
Office Commercial	288	3%
<b>Industrial</b>	<b>773</b>	<b>9%</b>
Light Industry	768	9%
Extractive Industry	5	0%
<b>Parks and Recreation</b>	<b>2,793</b>	<b>32%</b>
Open Space Park	2,266	26%
Recreation	527	6%
<b>Public Facilities and Institutions</b>	<b>2,484</b>	<b>29%</b>
Education	642	7%
Institutions	321	4%
Transportation, Communication, Utilities	1,521	18%
<b>Undeveloped</b>	<b>226</b>	<b>3%</b>
<b>Total</b>	<b>8,675</b>	<b>100%</b>

Note: Numbers may not add due to rounding.

Source: City of San Diego, 2018; SANDAG 2018

# Residential Density

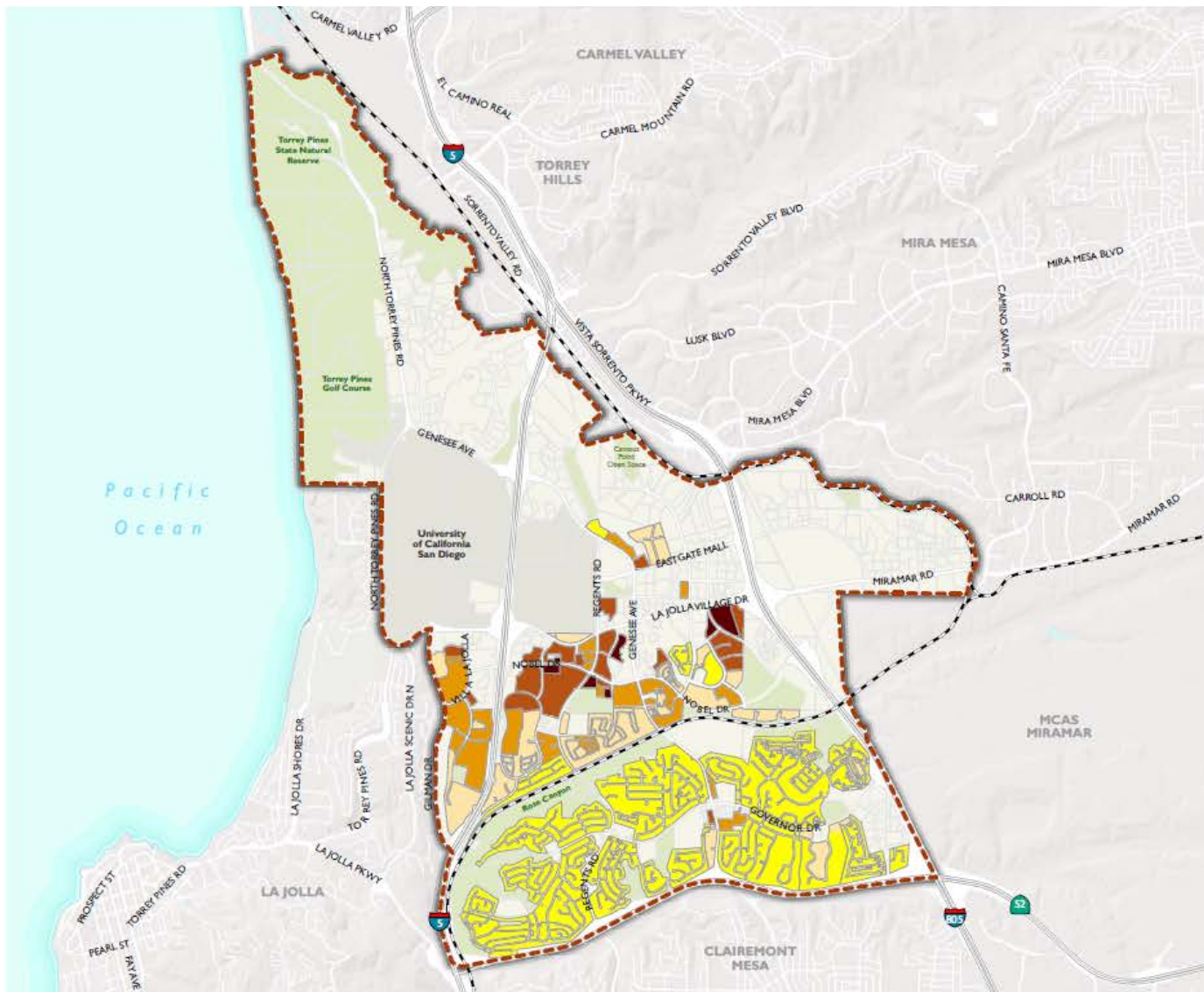
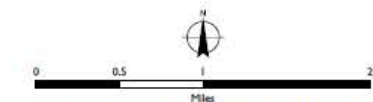


Figure 2-2  
UNIVERSITY COMMUNITY PLAN UPDATE  
**Residential Density**

**Existing Residential Density (du/acre)**

- Upto 8 units/acre
- 9-16 units/acre
- 17-30 units/acre
- 31-60 units/acre
- Over 60 units/acre

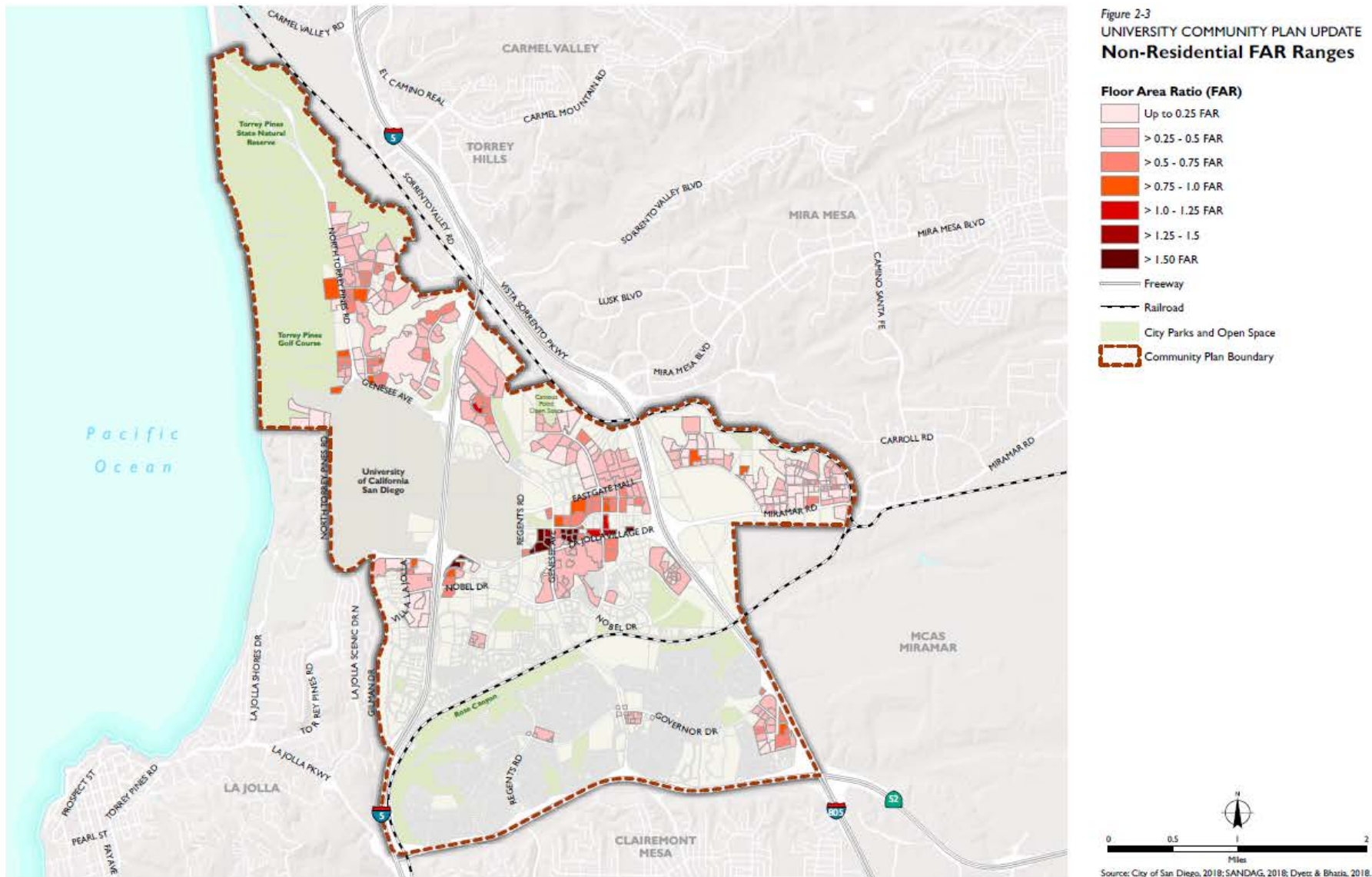
- Freeway
- Railroad
- Community Plan Boundary



Source: City of San Diego, 2018; SANDAG, 2018; Dyett & Bhatia, 2018.



# Non-Residential Floor Area Ratio (FAR)



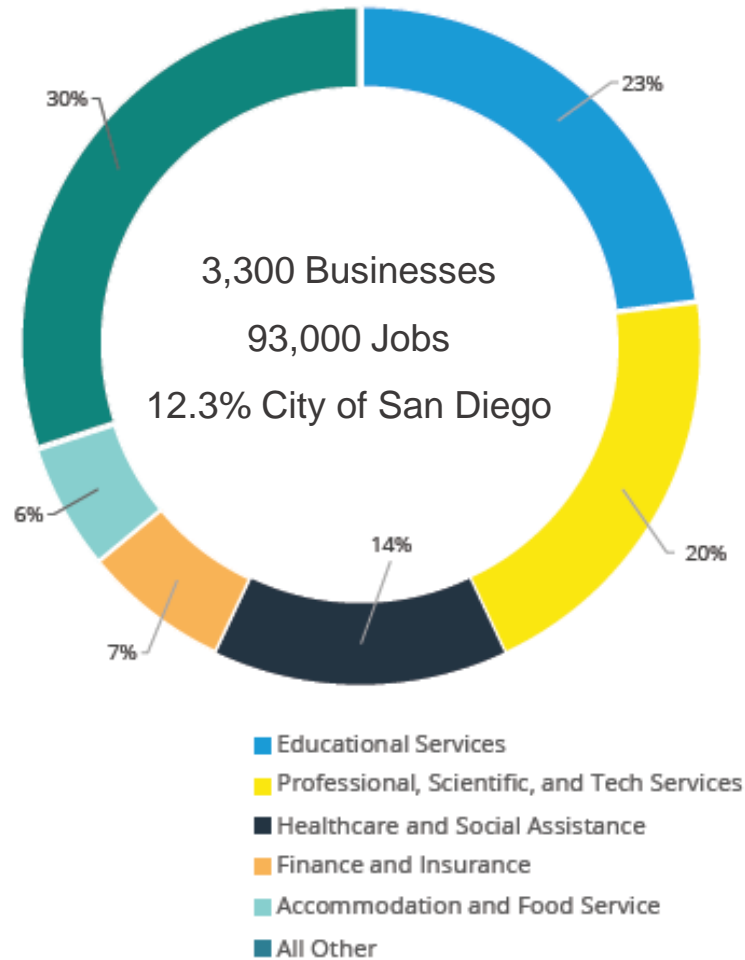
# Community Atlas Contents

1. Introduction & Overview
2. Land Use & Development
- 3. Economic Setting**
4. Urban Form
5. Mobility
6. Natural Environment & Open Space
7. Environmental Hazards & Community Health



# Employment Base

Chart 3-1: Job Sectors in University



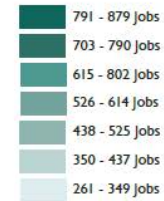
Source: U.S. Census Bureau, 2015





# Labor Force Commute

Figure 3-1  
UNIVERSITY COMMUNITY PLAN UPDATE  
Labor Force Commute



93 percent of workers commute into University for employment.<sup>8</sup> Out of the 7 percent of people who live and work in University, most live in the area north of Rose Canyon and south of La Jolla Village Drive. Figure 3-1 depicts the origins of commuters who travel to University for work. As shown in the Figure, the top five origin census tracts for in-commuters were as follows:

- 83.33 – Carmel Valley, Torrey Hills
- 170.30 – 4S Ranch, Rancho Bernardo, Black Mountain Ranch
- 215 – Carmel Valley, Pacific Highland Ranch
- 83.29 – Carmel Valley
- 83.35 – Torrey Highlands

Source: U.S. Census Bureau (OnTheMap), 2015

# Community Atlas Contents

1. Introduction & Overview
2. Land Use & Development
3. Economic Setting
- 4. Urban Form**
5. Mobility
6. Natural Environment & Open Space
7. Environmental Hazards & Community Health



# Urban Form

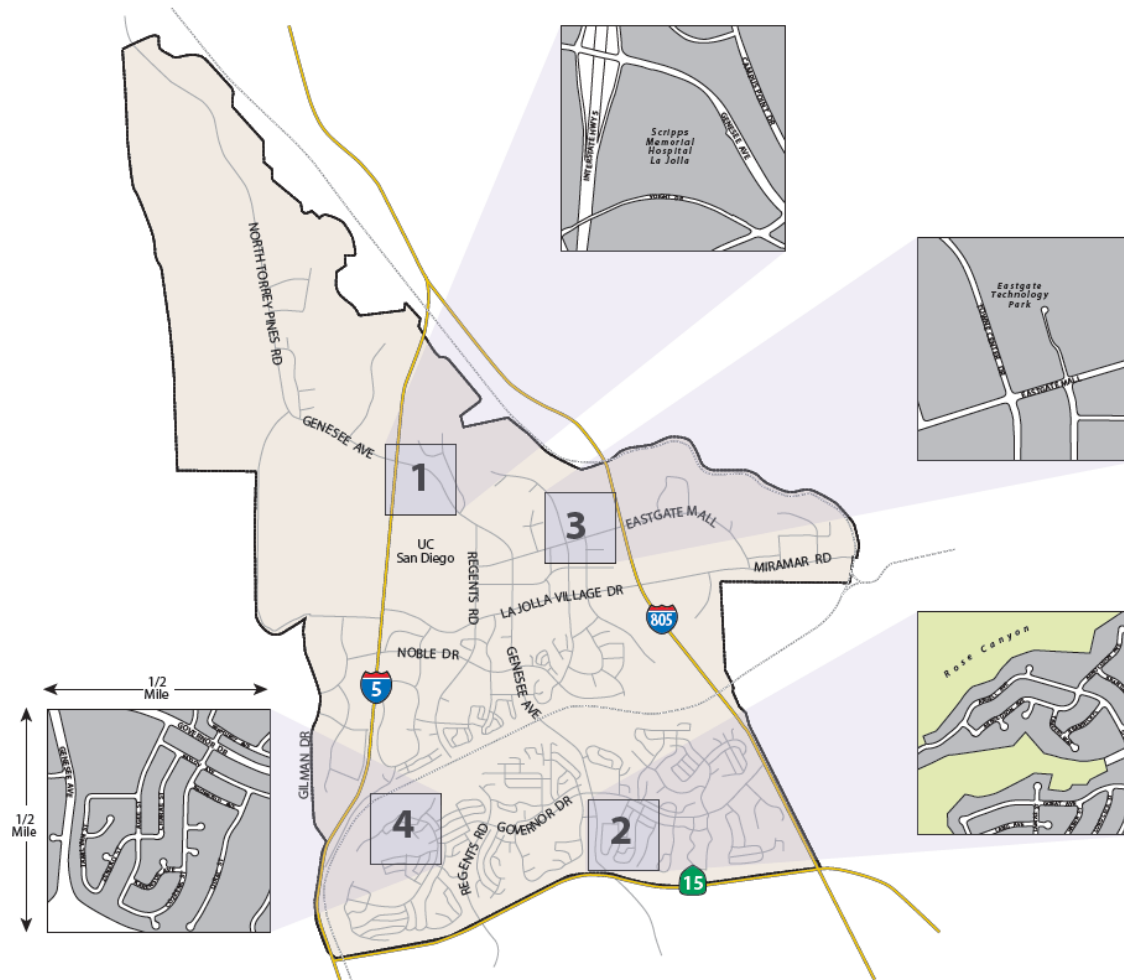


Figure 4-1  
UNIVERSITY COMMUNITY PLAN UPDATE  
**Block Patterns**

## 1. Super Blocks

Super blocks are larger than traditional city blocks and are primarily associated with institutional, educational, recreational, and corporate use rather than residential use. Intended for large-scale auto-oriented uses, super blocks offer limited interconnectivity to surrounding blocks. They typically have multiple means of entrance and egress, and have surface parking lots as central features. Examples of super blocks are Westfield UTC, Scripps Memorial Hospital La Jolla, Thornton Pavilion Hospital, and the UCSD campus.

## 2. Residential Curvilinear Blocks

Residential curvilinear neighborhood blocks contain multi-family, single-family, and duplex dwellings. They typically have curving streets, dead-ends, cul-de-sacs, and limited connectivity to major streets. Residential curvilinear blocks are typically found in flat portions of the Planning Area.

## 3. Industrial Blocks

Industrial blocks are large in scale and are typically associated with manufacturing facilities and business parks. Examples can be found in Torrey Pines Mesa, Campus Point, and Eastgate Technology Park.

## 4. Canyon Rim Blocks

Canyon Rim blocks are located within single-family neighborhoods along the rims of the canyon systems throughout University. They typically have organic and irregular shapes that contour with the topography. Examples of this block type can be found along the northern and southern rim of Rose Canyon.

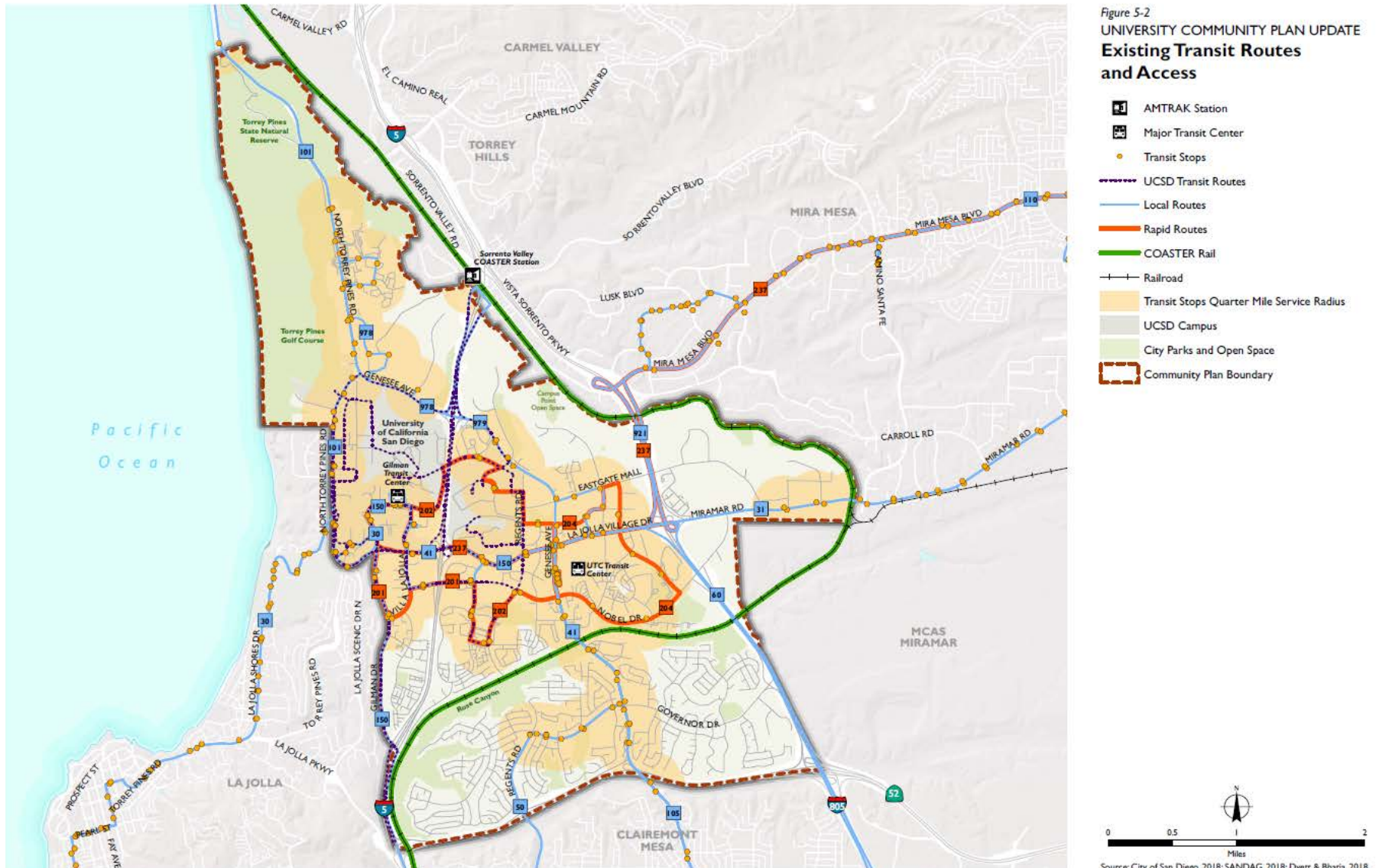


# Community Atlas Contents

1. Introduction & Overview
2. Land Use & Development
3. Economic Setting
4. Urban Form
- 5. Mobility**
6. Natural Environment & Open Space
7. Environmental Hazards & Community Health



# Existing Transit Routes and Access



# Community Atlas Contents

1. Introduction & Overview
2. Land Use & Development
3. Economic Setting
4. Urban Form
5. Mobility
- 6. Natural Environment & Open Space**
7. Environmental Hazards & Community Health





# Parks, Recreation, and Open Space

Table 6-1: Parks in the Planning Area

Facility	Usable Acres
<b>Population-Based Parks</b>	<b>74.6</b>
Community Parks	50.0
Doyle Community Park	18.1
Standley Park	10.8
Nobel Athletic Fields	21.1
Neighborhood Parks	23.3
Marcy Park	4.9
University Gardens	9.6
University Village	3.2
Villa La Jolla	5.6
<b>Mini-Parks</b>	<b>1.3</b>
Eastgate Park #1	0.8
Eastgate Park #2	0.5
<b>Joint Use Parks</b>	<b>18.5</b>
Doyle Elementary School	3.3
Spreckles Elementary School	1.7
Standley Middle School	13.5
<b>Resource-Based Parks</b>	<b>1,716.0</b>
Torrey Pines State Park	1,100.0
Torrey Pines City Park	249.0
Torrey Pines Golf Course	367.0

Source: University Community Plan, 1987

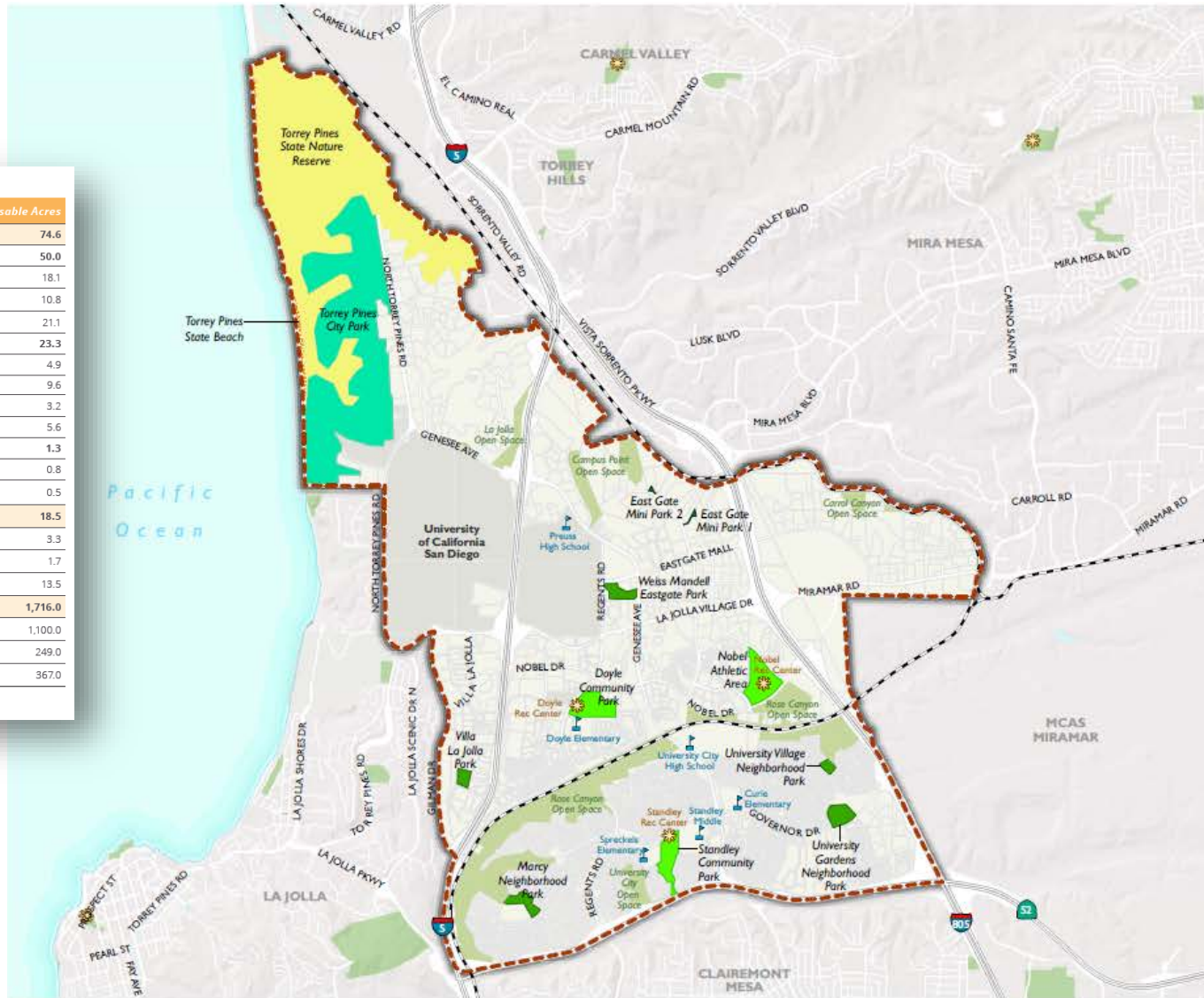
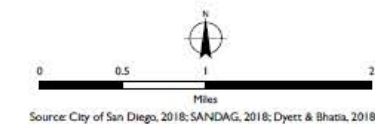
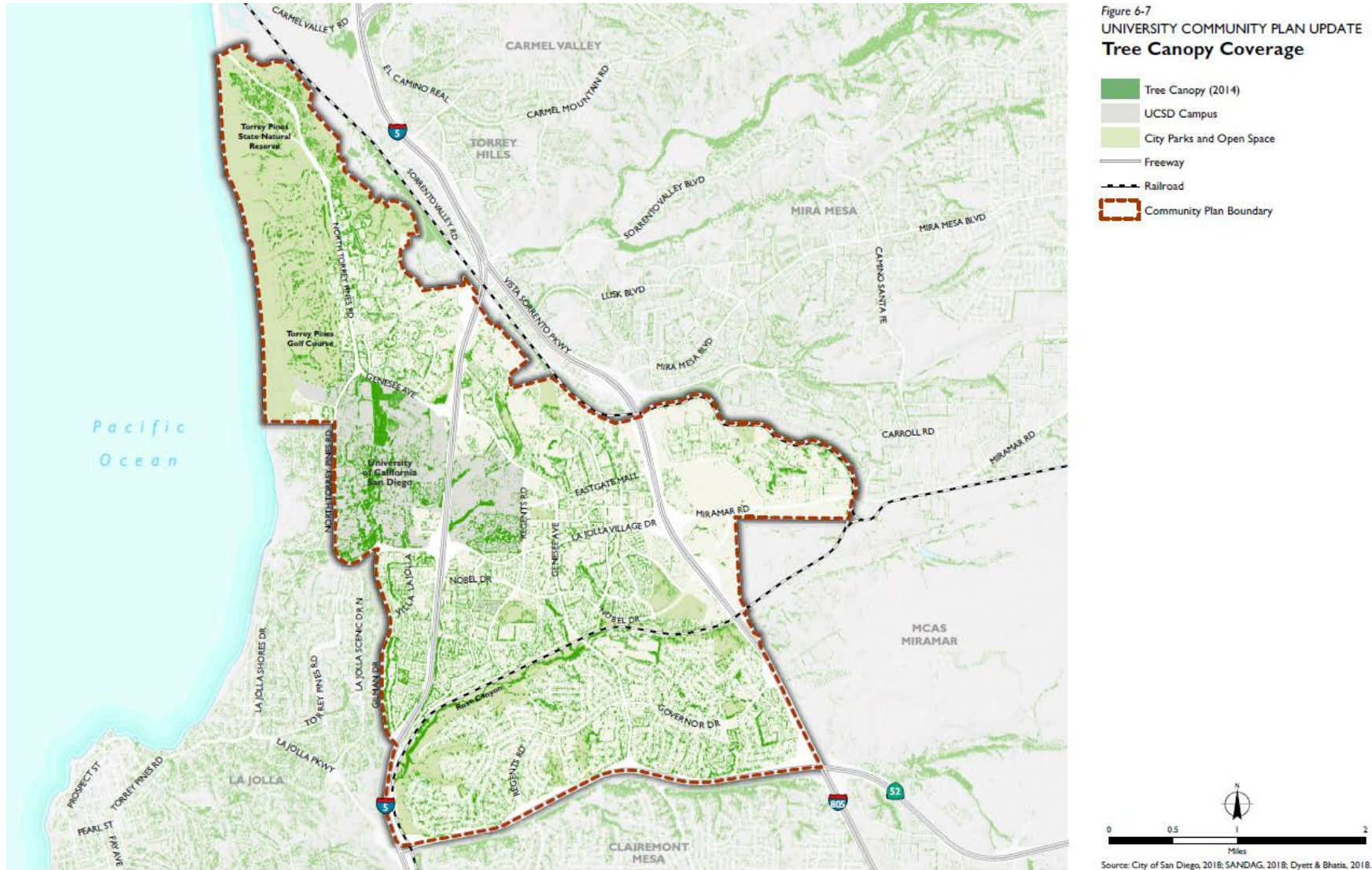


Figure 6-8  
UNIVERSITY COMMUNITY PLAN UPDATE  
Parks, Recreation Facilities,  
and Open Space



# Urban Forest





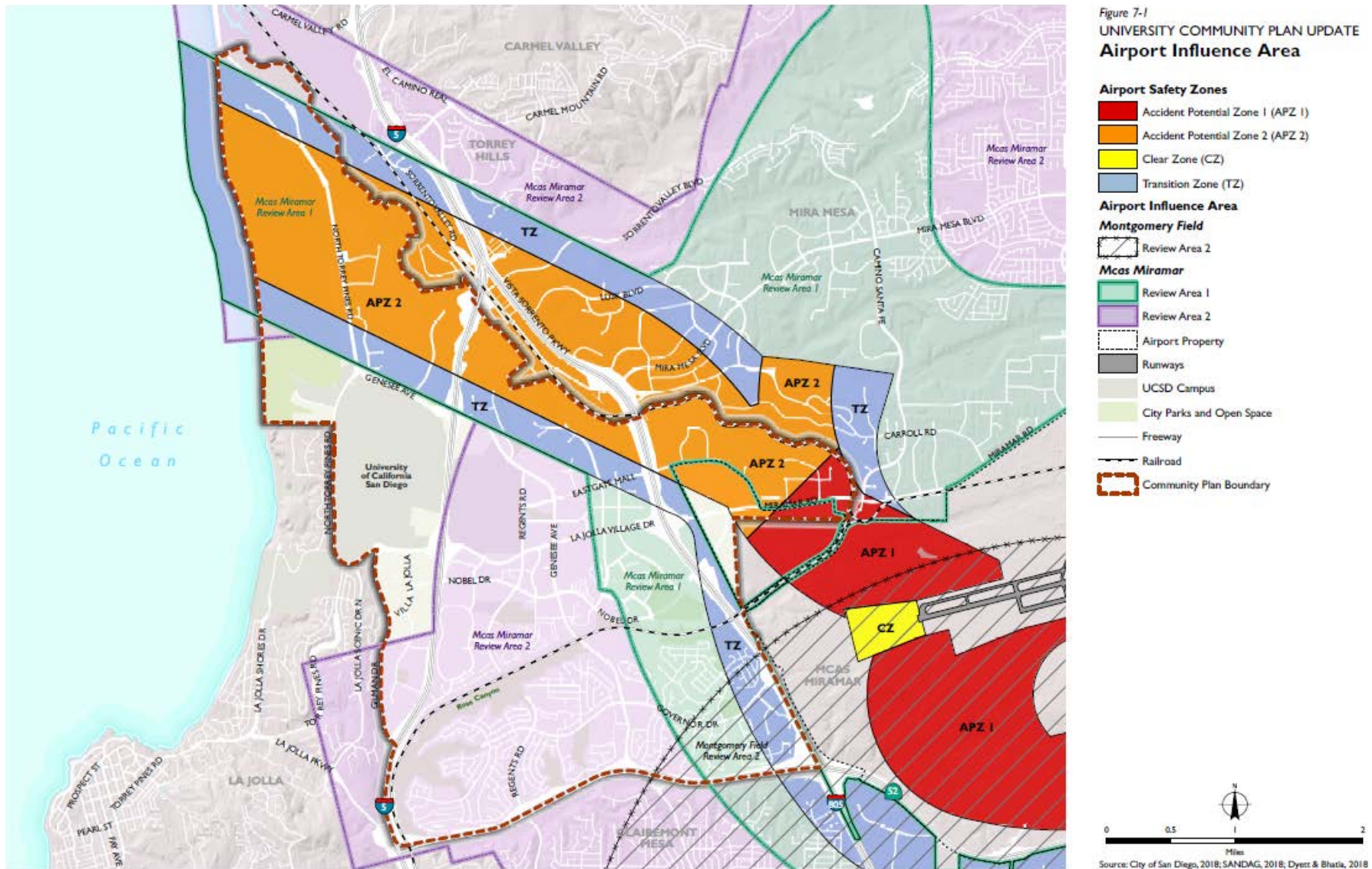
# Community Atlas Contents

1. Introduction & Overview
2. Land Use & Development
3. Economic Setting
4. Urban Form
5. Mobility
6. Natural Environment & Open Space
- 7. Environmental Hazards &  
Community Health**

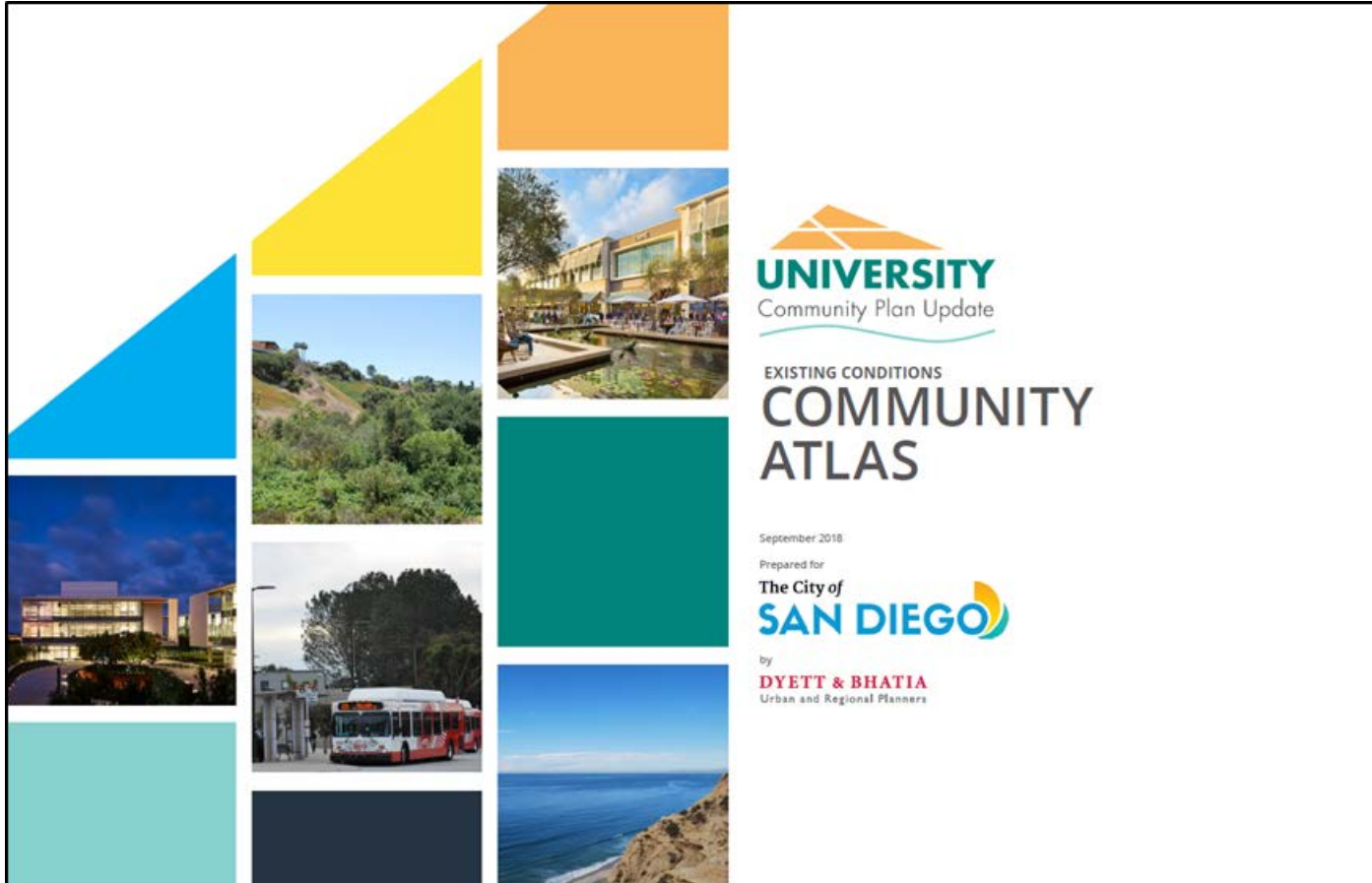




# Airport Influence Area



- [General Plan](https://www.sandiego.gov/planning/genplan) - <https://www.sandiego.gov/planning/genplan>
- [Climate Action Plan](https://www.sandiego.gov/sustainability/climate-action-plan) - <https://www.sandiego.gov/sustainability/climate-action-plan>
- [University Community Plan](https://www.sandiego.gov/planning/community/profiles/university/plan) - <https://www.sandiego.gov/planning/community/profiles/university/plan>
- [North University City PFFP & FBA](https://www.sandiego.gov/facilitiesfinancing/plans/northuniversity) - <https://www.sandiego.gov/facilitiesfinancing/plans/northuniversity>
- [South University Summary List & DIF](https://www.sandiego.gov/sites/default/files/legacy/facilitiesfinancing/pdf/plans/southucsummarylist.pdf) - <https://www.sandiego.gov/sites/default/files/legacy/facilitiesfinancing/pdf/plans/southucsummarylist.pdf>
- [UC San Diego 2018 Long Range Development Plan](http://lrdp.ucsd.edu/campus/proposed/index.html) - <http://lrdp.ucsd.edu/campus/proposed/index.html>
- Airport Land Use Compatibility Plan [MCAS Miramar](https://www.san.org/File-Manager?Command=Core_Download&EntryId=2989) / [Montgomery Field](https://www.san.org/File-Manager?Command=Core_Download&EntryId=2985) -  
[https://www.san.org/File-Manager?Command=Core\\_Download&EntryId=2989](https://www.san.org/File-Manager?Command=Core_Download&EntryId=2989)  
[https://www.san.org/File-Manager?Command=Core\\_Download&EntryId=2985](https://www.san.org/File-Manager?Command=Core_Download&EntryId=2985)



# QUESTIONS & DISCUSSION



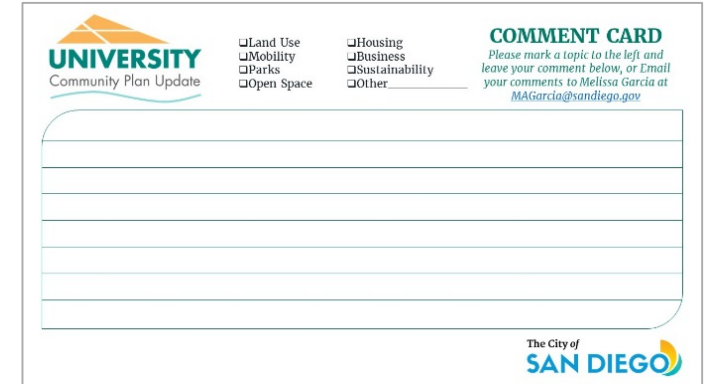
## Open House Kickoff

- Over 115 attended the event
- Planning Director Mike Hansen kicked off the Community Plan Update efforts
- Council member Barbara Bry attended in support of the public process
- Community members provided their feedback through various activities and comment cards



## Comment Card

- Long term balanced development for Economic "Upward" development in North University without sprawling "outward" into parks and open space areas.
- Ensuring a workable circulation system with better traffic features to serve the community
- Focus on community beautification
- Preserve and protect Rose Canyon and other community Open Space areas
- Sustainability must incorporate biodiversity, habitat, native species, watershed and wildlife corridors as well as social equity's part of the environment.
- Develop canyon overlook park



**UNIVERSITY**  
Community Plan Update

☐ Land Use    ☐ Housing  
☐ Mobility    ☐ Business  
☐ Parks    ☐ Sustainability  
☐ Open Space    ☐ Other \_\_\_\_\_

**COMMENT CARD**  
Please mark a topic to the left and leave your comment below, or Email your comments to Melissa Garcia at [MAGarcia@sandiego.gov](mailto:MAGarcia@sandiego.gov)

The City of  
**SAN DIEGO**

Comment Cards Summary	
Land Use	8
Mobility	18
Urban Design	3
Open Space	43
Sustainability	5
Parks	5
Suggestions to City Staff	5
<b>Overall Total</b>	<b>87</b>

## I Like...

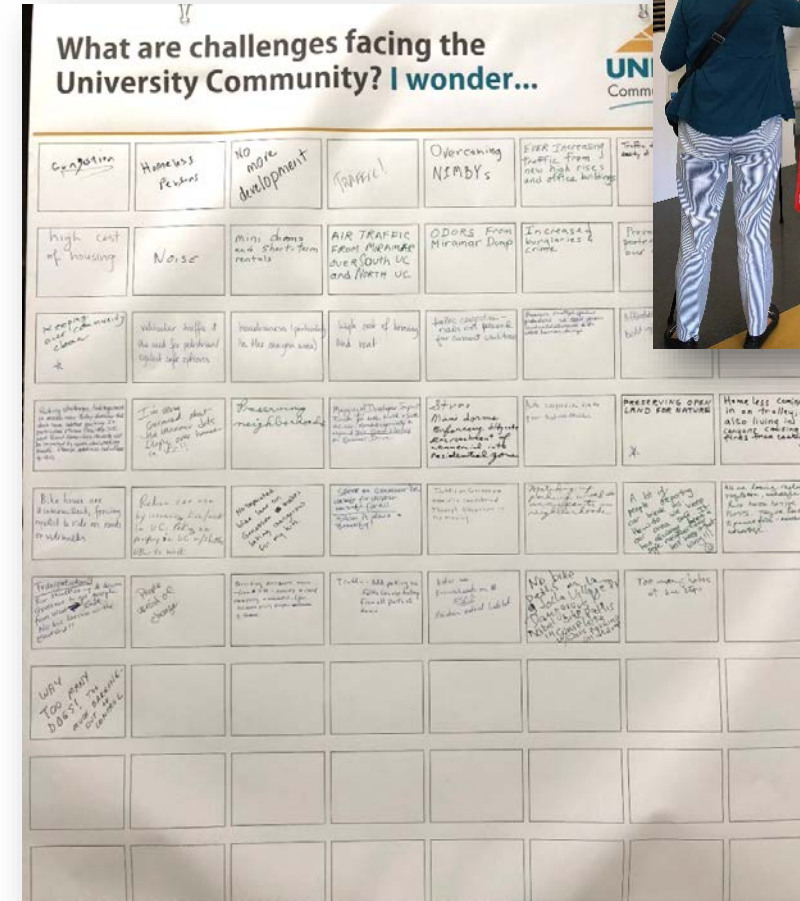
- Jobs
- Sense of Community
- Mass Transit
- Rose Canyon
- Walkability
- Culture Diversity
- UCSD



# What are challenges facing the University Community?

## I Wonder...

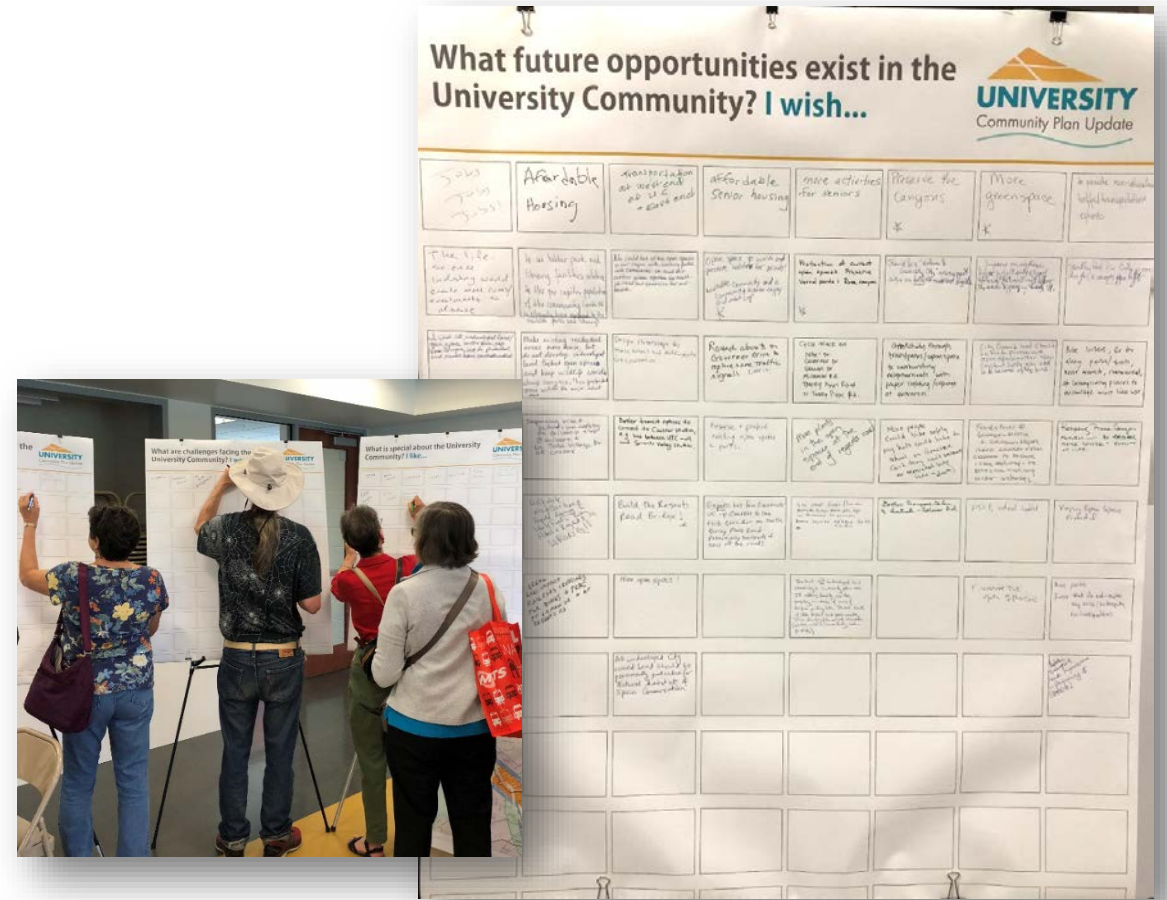
- Traffic and congestion
- No more development
- Preserving Rose Canyon
- High cost of housing and rent
- Preserving neighborhoods
- Noise
- Homeless



## What future opportunities exist in the University Community?

### I Wish...

- Jobs! Jobs! Jobs!
- Affordable housing
- More senior, student and affordable housing
- More dog parks
- Preserve and protect Rose Canyon





## Mobility Station

- Received 200 comments
- Stickers and written comments provided on a map
- Stickers identified a mode of travel
- Staff available for discussion





## Mobility Station Community Comments

Comments identified need for:


- Slowing speeds along corridors
- Intersection improvements
- New bicycle facilities
- Protection of Canyons
- Bus service/station improvements
- Safer crossings



# Community Feedback

## What amenities do you want more of in your public park?

- Multi-Use Trail
- Nature exploration areas
- Off-leash dog parks
- Non-programmed turf areas, picnic areas, fitness course

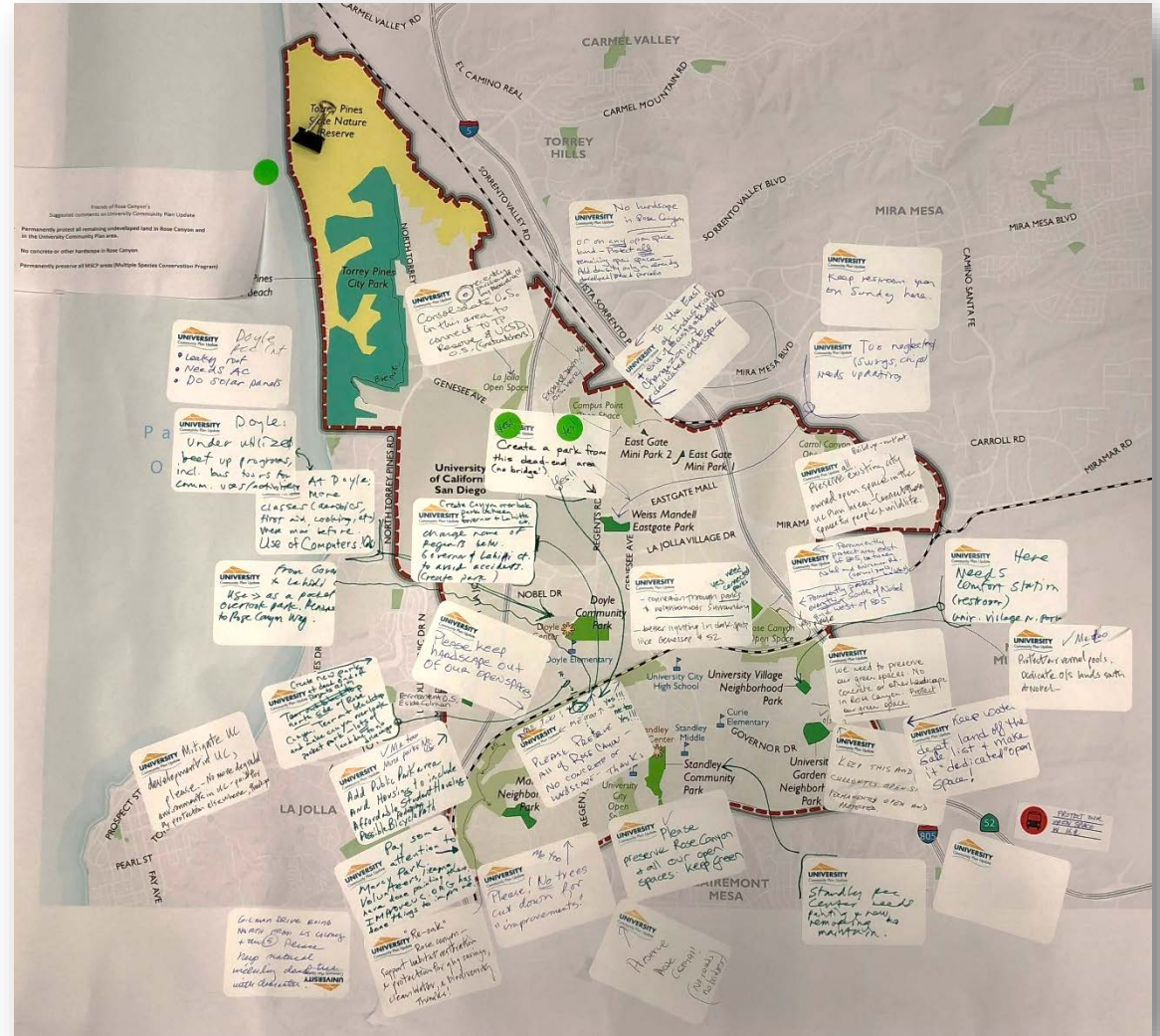



What Amenities Do You Want More of in Your Public Parks?			
Playgrounds	Soccer fields	Ball fields	Off-leash dog parks
Picnic areas	Multi-purpose courts	Tennis courts	Nature exploration areas
Recreation Centers	Aquatic Complex	Comfort stations	Fitness course
Non-programmed turf areas	Skateboard park	Multi-use trails	Bicycle Pump Track
Write In: More parking, Picnic areas, more trees, more seating	Write In: More soccer fields, More basketball courts	Write In: More trails, More picnic areas, More seating	Write In: More dog parks, More picnic areas, More seating



# Community Feedback

- Protect Rose Canyon
- Protect Open Space areas south of Nobel and east of I-805
- Create overlook parks at end of Regents Road on both sides of canyon
- Keep hardscape out of Open Space
- Need connected parks and neighborhoods





# Open House Summary



## Open House Summary

The event provided an overview of the contents of a community plan and included interactive exercises on the subject areas of land-use, mobility, sustainability and more. Opening remarks were given by both District One Councilmember Barbra Bry and Planning Director Mike Hansen. Centered around an inclusive and thoughtful plan update process, the event sought to gather valuable community-based information. Graphics below summarize the themes that emerged from community input provided during the University Community Plan Open House.

**WHAT IS A COMMUNITY PLAN UPDATE?**  
A Community Plan provides direction to guide growth and development within a given area. It describes the community's vision and identifies strategies for enhancing community character and managing change. It includes goals, policies, and implementation strategies. It guides local decision-making and public investment. It plays an important role in regulating land-use.



**115**  
Participants

**September**  
2018

**Nobel**  
Recreation  
Center

**Opportunities for Improvement**

**THE COMMUNITY WANTS TO:**

- Address Housing Affordability
- Reinforce the Community as an Employment Center
- Enhance Circulation Systems
- Work Towards Better Cycling Conditions
- Preserve and Connect Rose Canyon





The City of  
**SAN DIEGO**

## We Want to See More:





**Land Use & Housing**

- Added housing near all transit stops
- Additional housing options
- Housing with seniors and students in mind
- Housing affordability
- Neighborhood preservation
- Balanced development
- Upward development, no sprawl

**Mobility**

- Features that mitigate speed, traffic, and congestion
- Cycling facilities
- High-quality pedestrian crosswalks
- More transit options
- Bus services/station improvements
- Connected Parks



**Sustainability**

A community that is:

- More walkable and bikeable
- Thoughtfully embracing natural amenities
- Creating a sense of community
- Growing sustainably





**Open Space**

- Protected but accessible Open Spaces
- Development of formal trails
- Protection of Rose Canyon Open Space Park

**Amenities**

- Nature exploration areas
- Non-programmed turf areas
- Off-leash dog parks

To learn more or sign-up for the email list, please visit our website:

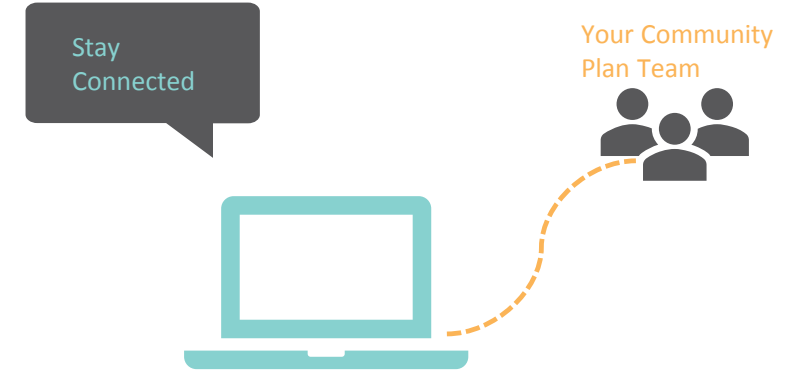
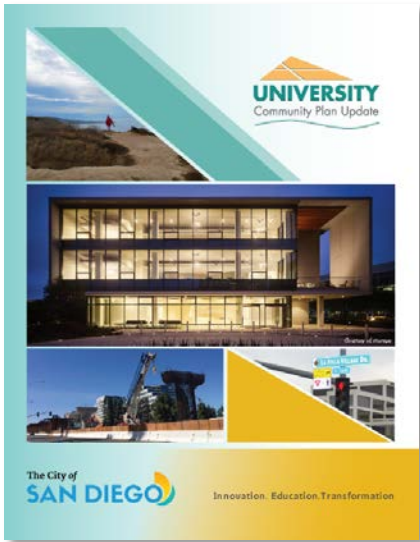
[www.sandiego.gov/planning/community/cpu/university](http://www.sandiego.gov/planning/community/cpu/university)

Questions? Contact Dan Monroe, Senior Planner  
(619) 236 - 5529 or [DMMonroe@sandiego.gov](mailto:DMMonroe@sandiego.gov)

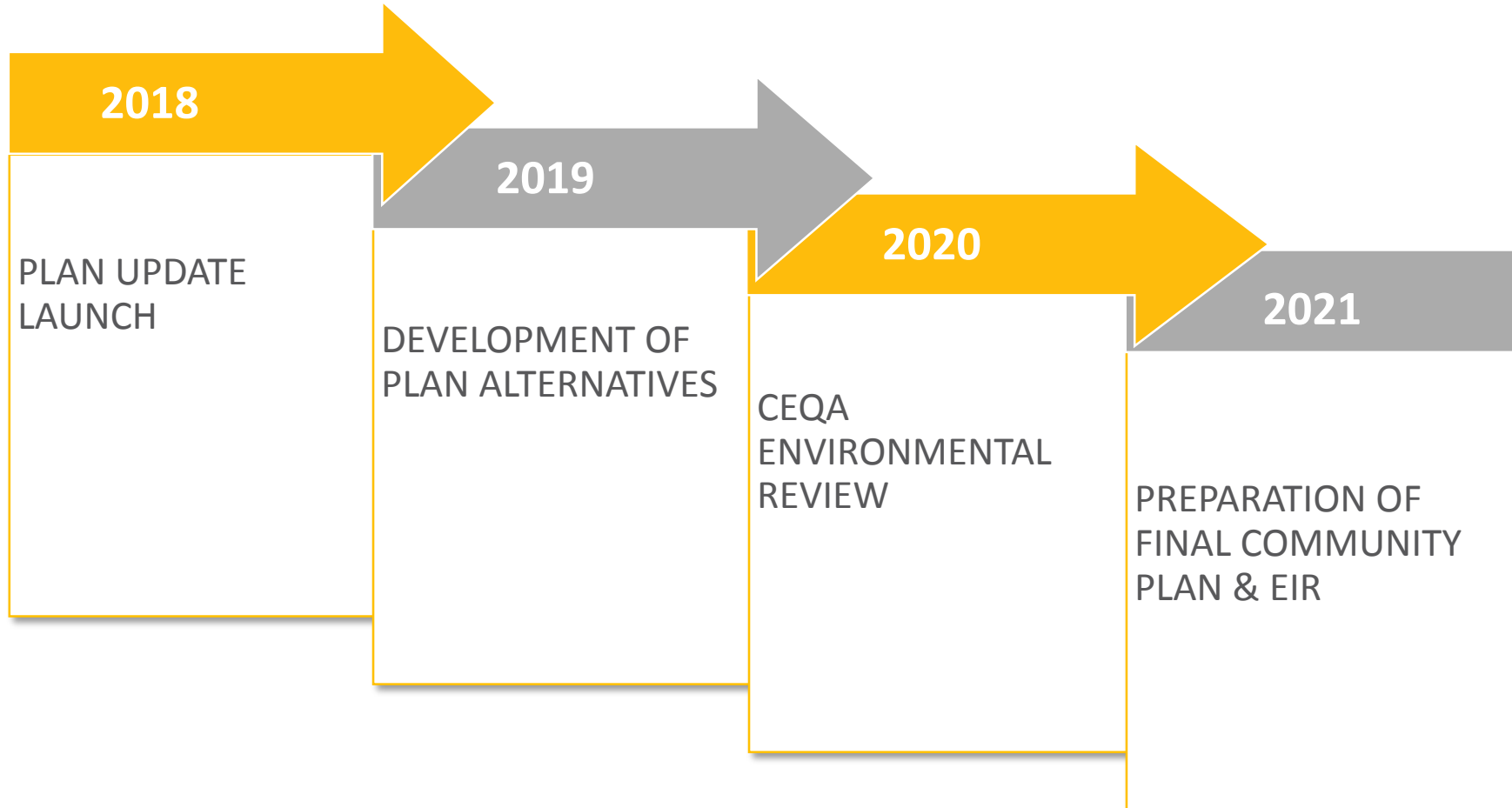


# Progress

- Existing Conditions Community Atlas
- Informational Brochure
- Community Plan Update Website
- Open House Kick-Off
- UCPG Subcommittee Formation
- *(Upcoming) Planning Commission Workshop February 28, 2019*
- *(Upcoming) Online Survey*



# Timeline





# Your Voice Counts!

<https://www.sandiego.gov/planning/community/cpu/university>

## Stay Connected

### Subscribe to our mailing list

Email Address \*

\* indicates required

First Name \*

Last Name

Subscribe



Your Community  
Plan Team





# QUESTIONS & DISCUSSION