



THE CITY OF SAN DIEGO

ADDENDUM TO MITIGATED NEGATIVE DECLARATION

Project No. 660674
Addendum to MND No. 255100
SCH No. 2011091045

SUBJECT: Water and Sewer Group Job 1052A: The proposed scope of work would include water and sewer pipe replacement, new installation, and abandonment. Approximately 9,473 linear feet (LF) of the existing 4-, 6-, 8-, 12-, and 16-inch diameter Asbestos Clay (AC) distribution water mains will be replaced with new Polyvinyl Chloride (PVC) pipe alignment. Approximately 1,878 LF of AC water mains will be abandoned, and approximately 493 LF of new water pipes, including associated water services, will be installed. Approximately 2,315 LF of existing 6- and 8-inch diameter Vitrified Clay (VC) and Concrete Pipe (CP) sewer pipes will be replaced with new PVC pipe alignment. New installation will also include 1,041 LF of new 8-inch PVC sewer mains. Approximately 1,008 LF of existing 6- and 8-inch PVC and VC sewer pipes will be abandoned, including associated sewer laterals, manholes, cleanouts, top hats and other associated work. The project includes the replacement of approximately 9 existing manholes, the installation of approximately 21 new manholes, the installation of approximately 12 new replumbed laterals, the replacement of approximately 62 laterals and the installation of new lateral cleanouts where necessary. The entire project is generally bound by Z Street to the north, S 45th Street to the east, and Main Street to the southwest. Work will occur within the developed right-of-way and private property. The project is partially within the Coastal Zone, Non-Appealable Area. The project is in the Barrio Logan and Southeastern San Diego Community Plan Areas, as well as Military Facilities, in Council Districts 8 and 9. **APPLICANT:** City of San Diego Engineering & Capital Projects Department.

I. SUMMARY OF PROPOSED PROJECT

The proposed scope of work would include water and sewer pipe replacement, new installation, and abandonment. Replacement and new installation would occur with either or both open trench and trenchless methods. For open trench work, trenches are typically 3-5 feet wide and are dug with excavators and similar large construction equipment. Most of the trenching work will occur within the public right-of-way.

Pipeline abandonment activities will have minimum surface/subsurface disturbance at both ends of the mains. Disturbance would be limited to removal of manholes and exposed pipe sections

Water Improvements

Approximately 9,473 LF of the existing 4-, 6-, 8-, 12-, and 16-inch diameter AC distribution water mains will be replaced with new PVC pipe alignment. Approximately 1,878 LF of AC water mains will be abandoned, and approximately 493 LF of new water pipes, including associated water services, will be installed. The approximate quantity for excavation for new water pipes is 273.9 cubic yards (CY) and for replaced water pipes is 5,262.8 CY.

Sewer Improvements

Approximately 2,315 LF of existing 6- and 8-inch diameter VC Concrete and PVC sewer pipes will be replaced with new PVC pipe alignment. New installation will include 1,041 LF of new 8-inch PVC sewer mains. Approximately 1,008 LF of existing 6- and 8-inch PVC and VC sewer pipes will be abandoned, including associated sewer laterals, manholes, cleanouts, top hats and other associated work. The approximate quantity for excavation for new sewer pipes is 1,156.7 CY, replaced sewer pipes is 2,117.8 CY and

Street Improvements

Other work relating to this project includes the replacement of approximately 9 existing manholes, the installation of approximately 21 new manholes, the installation of approximately 12 new replumbed laterals, the replacement of approximately 62 laterals and the installation of new lateral cleanouts where necessary. Work will occur within the developed right-of-way and private property, and excavation is not expected to exceed 13 feet in depth. The project will also include the following improvements: curb ramps, slurry and street resurfacing.

II. ENVIRONMENTAL SETTING

The Water and Sewer Group Job 1052A project is located in the Barrio Logan and Southeastern San Diego Community Plan Areas, as well as Military Facilities, in Council Districts 8 and 9. The entire project is generally bound by Z Street to the north, S 45th Street to the east, and Main Street to the southwest. Work will occur within the developed right-of-way and private property. The project is partially in the Coastal Zone, Non-Appealable Area. The project is not located within or adjacent to the Multi-Habitat Planning Area (MHPA).

The project would affect the following streets: 40th Street, Beta Street, 43rd Street, 45th Street, Main Street, Vesta Street, S 39th Street, Dalbergia Street, and alleys.

See attached Mitigated Negative Declaration (MND) for the environmental setting for the overall Citywide Pipeline Projects.

III. SUMMARY OF ORIGINAL PROJECT

A Citywide Pipelines Projects MND No. 255100 was prepared by the City of San Diego's Development Services Department (DSD) and was certified by the City Council on November 30, 2011 (Resolution No. 307122), hereby referenced as Citywide Pipelines MND. The Citywide Pipelines MND provides for the inclusion of subsequent pipeline projects that are located within the public right-of-way and would not result in any direct impacts to sensitive biological resources. Pursuant to the City of San Diego's Municipal Code Section 128.0306

and Section 15164(c) of State CEQA Guidelines addenda to environmental documents are not required to be circulated for public review.

IV. ENVIRONMENTAL DETERMINATION

The City previously prepared and certified the Citywide Pipelines MND No. 255100 /SCH No. 2011091045. Based on all available information in light of the entire record, the analysis in this Addendum, and pursuant to Section 15162 of the State CEQA Guidelines, the City has determined the following:

- There are no substantial changes proposed in the project which will require major revisions of the previous environmental document due to the involvement of new significant environmental effects or a substantial increase in the severity of previously identified significant effects;
- Substantial changes have not occurred with respect to the circumstances under which the project is undertaken which will require major revisions of the previous environmental document due to the involvement of new significant environmental effects or a substantial increase in the severity of previously identified significant effects; or
- There is no new information of substantial importance, which was not known and could not have been known with the exercise of reasonable diligence at the time the previous environmental document was certified as complete or was adopted, shows any of the following:
 - a. The project will have one or more significant effects not discussed in the previous environmental document;
 - b. Significant effects previously examined will be substantially more severe than shown in the previous environmental document;
 - c. Mitigation measures or alternatives previously found not to be feasible would in fact be feasible, and would substantially reduce one or more significant effects of the project, but the project proponents decline to adopt the mitigation measure or alternative; or
 - d. Mitigation measures or alternatives which are considerably different from those analyzed in the previous environmental would substantially reduce one or more significant effects on the environment, but the project proponents decline to adopt the mitigation measure or alternative.

Based upon a review of the current project, none of the conditions described in Section 15162 calling for the preparation of a subsequent EIR or negative declaration have occurred. No changes in circumstances have occurred, and no new information of substantial importance has manifested, which would result in new significant or substantially increased adverse impacts as a result of the project. Therefore, this Addendum has been prepared in

accordance with Section 15164 of the CEQA State Guidelines. Public review of this Addendum is not required per CEQA.

V. IMPACT ANALYSIS

The following includes the project-specific environmental review pursuant to the CEQA. The Citywide Pipelines MND determined the potential to impact Historical/Cultural Resources (Archaeology, Built Environment) and Land Use (MHPA). The analysis in this document evaluates the adequacy of the MND relative to the project.

Historical Resources (Archaeology)

Citywide Pipelines MND

The Citywide Pipelines MND concluded that pipeline projects located within the public right-of-way and city easements could result in significant environmental impacts relating to archaeological resources, and included mitigation to reduce impacts to archaeological resources to below a level of significance.

To reduce potential project impacts, to archaeological resources, to below a level of significance, excavation within previously undisturbed soil, for either new trench alignments or for replacement of pipelines within the same trench alignment occurring at a deeper depth than the previously existing pipeline, would be monitored by a qualified archaeologist or archaeological monitor and Native American monitor. Any significant archaeological resources encountered would be recovered and curated in accordance with the mitigation monitoring and Reporting Program (MMRP) detailed in Section V.

Project

City staff consulted with staff's qualified archaeologist regarding the potential for the project to impact historical resources. The project site is located in an area that is sensitive for the discovery of archaeological resources and the project will disturb previously undisturbed soil. Therefore, archaeological and Native American monitoring will be required for ground disturbance of undisturbed soil. This monitoring will be included in the MMRP in the MND Addendum for the project. These measures are included in Section VI of this MND.

Historical Resources (Built Environment)

Citywide Pipelines MND

The Citywide Pipelines MND concluded that pipeline projects located within the public right-of-way and city easements could result in significant environmental impacts relating to historical resources. Projects located in a historical district must incorporate mitigation to reduce impacts to the historical district to below a level of significance. This mitigation measure does not apply because the project is not in a historic designated district.

The purpose and intent of the *Historical Resources Regulations of the Land Development*

Code (Chapter 14, Division 3, and Article 2) is to protect, preserve and, where damaged, restore the historical resources of San Diego. The regulations apply to all proposed development within the City of San Diego when historical resources are present on the premises. A project that may cause a substantial adverse change in the significance of a historical resource may have a significant effect on the environment (Sections 15064.5(b) and 21084.1).

Project

The project is not located within the boundaries of any historic district or historic sites. Therefore, no impacts would occur to historical resources (built environment) as a result of the project and no mitigation is required.

Land Use

Citywide Pipelines MND

The Citywide Pipelines MND concluded that future pipeline projects would involve replacing and installing utility infrastructure located within proximity to the City's MHPA which is covered by the MSCP Subarea Plan. No conflicts are anticipated because implementation of the MHPA Land Use Adjacency Guidelines would be required for any project located within 100 feet from the MHPA. Measures to reduce potential indirect impacts to the City's MHPA have been included in the MMRP contained within Section V of the Citywide Pipelines MND. With mitigation incorporated, impacts would be less than significant.

Project

The project would not conflict with any applicable land use plan, policy, or regulation of an agency with jurisdiction over the project (including but not limited to the general plan, specific plan, local coastal program, or zoning ordinance) adopted for the purpose of avoiding or mitigating an environmental effect. The project is not within or adjacent to the MHPA. Thus, no impact to land use would occur.

Paleontological Resources

Citywide Pipelines Project MND

The Citywide Pipelines MND analyzed paleontological resources in relation to pipeline projects, which included mitigation to reduce impacts to paleontological resources to below a level of significance. The project area is underlain by geologic formations that, with respect to paleontological fossil resource potential, are assigned a moderate and high sensitivity ratings. Based on the sensitivity of the affected formations and proposed excavation depths exceeding 10 feet, construction of subsequent pipeline projects could result in potentially significant impacts to fossil resources.

To reduce potential impacts to below a level of significance, excavation within previously undisturbed formations at a depth of 10 or more feet, for either new trench alignments

and/or for replacement of pipelines within the same trench alignment occurring at a deeper depth than the previously existing pipeline, would be monitored by a qualified paleontologist or paleontological monitor. Any significant paleontological resources encountered would be recovered and curated in accordance with the mitigation monitoring and Reporting Program (MMRP) detailed in Section V of the Citywide Pipelines MND.

Project

The project appears to be underlain by Very Old Paralic Deposits, Unit 6, with a high sensitivity for paleontological resources. Project excavation would exceed 1,000 cubic yards and 10 feet in depth, thus Paleontological resources monitoring shall be required in accordance with the General Grading Guidelines for Paleontological Resources in the Land Development Manual. Monitoring is required to comply with San Diego Municipal Code section 142.0151 and would reduce potentially significant impacts to paleontological resources to a less than significant level. No mitigation is required.

Summary

Based on the foregoing analysis and information, there is no evidence that the project would require a major change to the Mitigated Negative Declaration. The project would not result in any new significant impact, nor would a substantial increase in the severity of impacts from that described in the Mitigated Negative Declaration result.

VI. MITIGATION, MONITORING, AND REPORTING PROGRAM (MMRP) INCORPORATED INTO THE PROJECT

Historical Resources (Archaeology)

I. Prior to Permit Issuance or Bid Opening/Bid Award

A. Entitlements Plan Check

1. Prior to permit issuance or Bid Opening/Bid Award, whichever is applicable, the Assistant Deputy Director (ADD) Environmental designee shall verify that the requirements for Archaeological Monitoring and Native American monitoring have been noted on the applicable construction documents through the plan check process.

B. Letters of Qualification have been submitted to ADD

1. Prior to Bid Award, the applicant shall submit a letter of verification to Mitigation Monitoring Coordination (MMC) identifying the Principal Investigator (PI) for the project and the names of all persons involved in the archaeological monitoring program, as defined in the City of San Diego Historical Resources Guidelines (HRG). If applicable, individuals involved in the archaeological monitoring program must have completed the 40-hour HAZWOPER training with certification documentation.
2. MMC will provide a letter to the applicant confirming the qualifications of the PI and all persons involved in the archaeological monitoring of the project meet the qualifications established in the HRG.
3. Prior to the start of work, the applicant must obtain written approval from MMC for any personnel changes associated with the monitoring program.

II. Prior to Start of Construction

A. Verification of Records Search

1. The PI shall provide verification to MMC that a site specific records search (1/4 mile radius) has been completed. Verification includes, but is not limited to a copy of a confirmation letter from South Coastal Information Center, or, if the search was in-house, a letter of verification from the PI stating that the search was completed.
2. The letter shall introduce any pertinent information concerning expectations and probabilities of discovery during trenching and/or grading activities.
3. The PI may submit a detailed letter to MMC requesting a reduction to the ¼ mile radius.

B. PI Shall Attend Precon Meetings

1. Prior to beginning any work that requires monitoring; the Applicant shall arrange a Precon Meeting that shall include the PI, Native American consultant/monitor (where Native American resources may be impacted), Construction Manager (CM) and/or Grading Contractor, Resident Engineer (RE), Building Inspector (BI), if appropriate, and MMC. The qualified Archaeologist and Native American Monitor shall attend any grading/excavation related Precon Meetings to make comments and/or suggestions concerning the Archaeological Monitoring program with the Construction Manager and/or Grading Contractor.
 - a. If the PI is unable to attend the Precon Meeting, the Applicant shall schedule a focused Precon Meeting with MMC, the PI, RE, CM or BI, if appropriate, prior to the start of any work that requires monitoring.
2. Acknowledgement of Responsibility for Curation (CIP or Other Public Projects)
The applicant shall submit a letter to MMC acknowledging their responsibility for the cost of curation associated with all phases of the archaeological monitoring program.
3. Identify Areas to be Monitored
 - a. Prior to the start of any work that requires monitoring, the PI shall submit an Archaeological Monitoring Exhibit (AME) (with verification that the AME has been reviewed and approved by the Native American consultant/monitor when Native American resources may be impacted) based on the appropriate construction documents (reduced to 11x17) to MMC identifying the areas to be monitored including the delineation of grading/excavation limits.
 - b. The AME shall be based on the results of a site specific records search as well as information regarding the age of existing pipelines, laterals and associated appurtenances and/or any known soil conditions (native or formation).
 - c. MMC shall notify the PI that the AME has been approved.
4. When Monitoring Will Occur
 - a. Prior to the start of any work, the PI shall also submit a construction schedule to MMC through the RE indicating when and where monitoring will occur.
 - b. The PI may submit a detailed letter to MMC prior to the start of work or during construction requesting a modification to the monitoring program. This request shall be based on relevant information such as review of final construction documents which indicate conditions such as age of existing pipe to be replaced, depth of excavation and/or site graded to bedrock, etc., which may reduce or increase the potential for resources to be present.
5. Approval of AME and Construction Schedule

After approval of the AME by MMC, the PI shall submit to MMC written authorization of the AME and Construction Schedule from the CM.

III. During Construction

A. Monitor Shall be Present During Grading/Excavation/Trenching

1. The Archaeological Monitor shall be present full-time during all soil disturbing and grading/excavation/trenching activities which could result in impacts to archaeological resources as identified on the AME. The Construction Manager is responsible for notifying the RE, PI, and MMC of changes to any construction activities such as in the case of a potential safety concern within the area being monitored. In certain circumstances OSHA safety requirements may necessitate modification of the AME.
2. The Native American consultant/monitor shall determine the extent of their presence during soil disturbing and grading/excavation/trenching activities based on the AME and provide that information to the PI and MMC. If prehistoric resources are encountered during the Native American consultant/monitor's absence, work shall stop and the Discovery Notification Process detailed in Section III.B-C and IV.A-D shall commence.
3. The PI may submit a detailed letter to MMC during construction requesting a modification to the monitoring program when a field condition such as modern disturbance post-dating the previous grading/trenching activities, presence of fossil formations, or when native soils are encountered that may reduce or increase the potential for resources to be present.
4. The archaeological and Native American consultant/monitor shall document field activity via the Consultant Site Visit Record (CSVSR). The CSVSR's shall be emailed by the CM to the RE the first day of monitoring, the last day of monitoring, monthly **(Notification of Monitoring Completion)**, and in the case of ANY discoveries. The RE shall forward copies to MMC.

B. Discovery Notification Process

1. In the event of a discovery, the Archaeological Monitor shall direct the contractor to temporarily divert all soil disturbing activities, including but not limited to digging, trenching, excavating or grading activities in the area of discovery and in the area reasonably suspected to overlay adjacent resources and immediately notify the RE or BI, as appropriate.
2. The Monitor shall immediately notify the PI (unless Monitor is the PI) of the discovery.
3. The PI shall immediately notify MMC by phone of the discovery, and shall also submit written documentation to MMC within 24 hours by email with photos of the resource in context, if possible.
4. No soil shall be exported off-site until a determination can be made regarding the significance of the resource specifically if Native American resources are encountered.

C. Determination of Significance

1. The PI and Native American consultant/monitor, where Native American resources are discovered shall evaluate the significance of the resource. If Human Remains are involved, follow protocol in Section IV below.

- a. The PI shall immediately notify MMC by phone to discuss significance determination and shall also submit a letter to MMC indicating whether additional mitigation is required.
- b. If the resource is significant, the PI shall submit an Archaeological Data Recovery Program (ADRP) and obtain written approval of the program from MMC, CM and RE. ADRP and any mitigation must be approved by MMC, RE and/or CM before ground disturbing activities in the area of discovery will be allowed to resume.
Note: If a unique archaeological site is also an historical resource as defined in CEQA Section 15064.5, then the limits on the amount(s) that a project applicant may be required to pay to cover mitigation costs as indicated in CEQA Section 21083.2 shall not apply.
 - (1). Note: For pipeline trenching and other linear projects in the public Right-of-Way, the PI shall implement the Discovery Process for Pipeline Trenching projects identified below under "D."
- c. If the resource is not significant, the PI shall submit a letter to MMC indicating that artifacts will be collected, curated, and documented in the Final Monitoring Report. The letter shall also indicate that that no further work is required.
 - (1). Note: For Pipeline Trenching and other linear projects in the public Right-of-Way, if the deposit is limited in size, both in length and depth; the information value is limited and is not associated with any other resource; and there are no unique features/artifacts associated with the deposit, the discovery should be considered not significant.
 - (2). Note, for Pipeline Trenching and other linear projects in the public Right-of-Way, if significance cannot be determined, the Final Monitoring Report and Site Record (DPR Form 523A/B) shall identify the discovery as Potentially Significant.

D. Discovery Process for Significant Resources - Pipeline Trenching and other Linear Projects in the Public Right-of-Way.

The following procedure constitutes adequate mitigation of a significant discovery encountered during pipeline trenching activities or for other linear project types within the Public Right-of-Way including but not limited to excavation for jacking pits, receiving pits, laterals, and manholes to reduce impacts to below a level of significance:

1. Procedures for documentation, curation and reporting
 - a. One hundred percent of the artifacts within the trench alignment and width shall be documented in-situ, to include photographic records, plan view of the trench and profiles of side walls, recovered, photographed after cleaning and analyzed and curated. The remainder of the deposit within the limits of excavation (trench walls) shall be left intact.
 - b. The PI shall prepare a Draft Monitoring Report and submit to MMC via the RE as indicated in Section VI-A.
 - c. The PI shall be responsible for recording (on the appropriate State of California Department of Park and Recreation forms-DPR 523 A/B) the resource(s) encountered during the Archaeological Monitoring Program in accordance with the City's Historical Resources Guidelines. The DPR forms shall be submitted to

the South Coastal Information Center for either a Primary Record or SDI Number and included in the Final Monitoring Report.

- d. The Final Monitoring Report shall include a recommendation for monitoring of any future work in the vicinity of the resource.

IV. Discovery of Human Remains

If human remains are discovered, work shall halt in that area and no soil shall be exported off-site until a determination can be made regarding the provenance of the human remains; and the following procedures as set forth in CEQA Section 15064.5(e), the California Public Resources Code (Sec. 5097.98) and State Health and Safety Code (Sec. 7050.5) shall be undertaken:

A. Notification

1. Archaeological Monitor shall notify the RE or BI as appropriate, MMC, and the PI, if the Monitor is not qualified as a PI. MMC will notify the appropriate Senior Planner in the Environmental Analysis Section (EAS) of the Development Services Department to assist with the discovery notification process.
2. The PI shall notify the Medical Examiner after consultation with the RE, either in person or via telephone.

B. Isolate discovery site

1. Work shall be directed away from the location of the discovery and any nearby area reasonably suspected to overlay adjacent human remains until a determination can be made by the Medical Examiner in consultation with the PI concerning the provenience of the remains.
2. The Medical Examiner, in consultation with the PI, will determine the need for a field examination to determine the provenience.
3. If a field examination is not warranted, the Medical Examiner will determine with input from the PI, if the remains are or are most likely to be of Native American origin.

C. If Human Remains **ARE** determined to be Native American

1. The Medical Examiner will notify the Native American Heritage Commission (NAHC) within 24 hours. By law, **ONLY** the Medical Examiner can make this call.
2. NAHC will immediately identify the person or persons determined to be the Most Likely Descendent (MLD) and provide contact information.
3. The MLD will contact the PI within 24 hours or sooner after the Medical Examiner has completed coordination, to begin the consultation process in accordance with CEQA Section 15064.5(e), the California Public Resources and Health & Safety Codes.
4. The MLD will have 48 hours to make recommendations to the property owner or representative, for the treatment or disposition with proper dignity, of the human remains and associated grave goods.
5. Disposition of Native American Human Remains will be determined between the MLD and the PI, and, if:
 - a. The NAHC is unable to identify the MLD, OR the MLD failed to make a recommendation within 48 hours after being notified by the Commission, OR;
 - b. The landowner or authorized representative rejects the recommendation of the MLD and mediation in accordance with PRC 5097.94 (k) by the NAHC fails to provide measures acceptable to the landowner, THEN
 - c. To protect these sites, the landowner shall do one or more of the following:

- (1) Record the site with the NAHC;
 - (2) Record an open space or conservation easement; or
 - (3) Record a document with the County.
- d. Upon the discovery of multiple Native American human remains during a ground disturbing land development activity, the landowner may agree that additional conferral with descendants is necessary to consider culturally appropriate treatment of multiple Native American human remains. Culturally appropriate treatment of such a discovery may be ascertained from review of the site utilizing cultural and archaeological standards. Where the parties are unable to agree on the appropriate treatment measures the human remains and items associated and buried with Native American human remains shall be reinterred with appropriate dignity, pursuant to Section 5.c., above.
- D. If Human Remains are **NOT** Native American
 - 1. The PI shall contact the Medical Examiner and notify them of the historic era context of the burial.
 - 2. The Medical Examiner will determine the appropriate course of action with the PI and City staff (PRC 5097.98).
 - 3. If the remains are of historic origin, they shall be appropriately removed and conveyed to the San Diego Museum of Man for analysis. The decision for internment of the human remains shall be made in consultation with MMC, EAS, the applicant/ landowner, any known descendant group, and the San Diego Museum of Man.

V. Night and/or Weekend Work

- A. If night and/or weekend work is included in the contract
 - 1. When night and/or weekend work is included in the contract package, the extent and timing shall be presented and discussed at the precon meeting.
 - 2. The following procedures shall be followed.
 - a. No Discoveries

In the event that no discoveries were encountered during night and/or weekend work, the PI shall record the information on the CSV and submit to MMC via email by 8AM of the next business day.
 - b. Discoveries

All discoveries shall be processed and documented using the existing procedures detailed in Sections III - During Construction, and IV - Discovery of Human Remains. Discovery of human remains shall always be treated as a significant discovery.
 - c. Potentially Significant Discoveries

If the PI determines that a potentially significant discovery has been made, the procedures detailed under Section III - During Construction and IV-Discovery of Human Remains shall be followed.
 - d. The PI shall immediately contact the RE and MMC, or by 8AM of the next business day to report and discuss the findings as indicated in Section III-B, unless other specific arrangements have been made.
- B. If night and/or weekend work becomes necessary during the course of construction
 - 1. The Construction Manager shall notify the RE, or BI, as appropriate, a minimum of 24 hours before the work is to begin.
 - 2. The RE, or BI, as appropriate, shall notify MMC immediately.

C. All other procedures described above shall apply, as appropriate.

VI. Post Construction

A. Submittal of Draft Monitoring Report

1. The PI shall submit two copies of the Draft Monitoring Report (even if negative), prepared in accordance with the Historical Resources Guidelines (Appendix C/D) which describes the results, analysis, and conclusions of all phases of the Archaeological Monitoring Program (with appropriate graphics) to MMC via the RE for review and approval within 90 days following the completion of monitoring. It should be noted that if the PI is unable to submit the Draft Monitoring Report within the allotted 90-day timeframe as a result of delays with analysis, special study results or other complex issues, a schedule shall be submitted to MMC establishing agreed due dates and the provision for submittal of monthly status reports until this measure can be met.
 - a. For significant archaeological resources encountered during monitoring, the Archaeological Data Recovery Program or Pipeline Trenching Discovery Process shall be included in the Draft Monitoring Report.
 - b. Recording Sites with State of California Department of Parks and Recreation
The PI shall be responsible for recording (on the appropriate State of California Department of Park and Recreation forms-DPR 523 A/B) any significant or potentially significant resources encountered during the Archaeological Monitoring Program in accordance with the City's Historical Resources Guidelines, and submittal of such forms to the South Coastal Information Center with the Final Monitoring Report.
2. MMC shall return the Draft Monitoring Report to the PI via the RE for revision or, for preparation of the Final Report.
3. The PI shall submit revised Draft Monitoring Report to MMC via the RE for approval.
4. MMC shall provide written verification to the PI of the approved report.
5. MMC shall notify the RE or BI, as appropriate, of receipt of all Draft Monitoring Report submittals and approvals.

B. Handling of Artifacts

1. The PI shall be responsible for ensuring that all cultural remains collected are cleaned and catalogued
2. The PI shall be responsible for ensuring that all artifacts are analyzed to identify function and chronology as they relate to the history of the area; that faunal material is identified as to species; and that specialty studies are completed, as appropriate.

C. Curation of artifacts: Accession Agreement and Acceptance Verification

1. The PI shall be responsible for ensuring that all artifacts associated with the survey, testing and/or data recovery for this project are permanently curated with an appropriate institution. This shall be completed in consultation with MMC and the Native American representative, as applicable.
2. When applicable to the situation, the PI shall include written verification from the Native American consultant/monitor indicating that Native American resources were treated in accordance with state law and/or applicable agreements. If the resources were reinterred, verification shall be provided to show what protective measures were taken to ensure no further disturbance occurs in accordance with Section IV – Discovery of Human Remains, Subsection C.

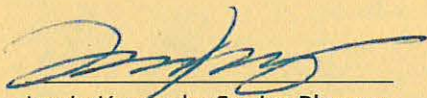
3. The PI shall submit the Accession Agreement and catalogue record(s) to the RE or BI, as appropriate for donor signature with a copy submitted to MMC.
 4. The RE or BI, as appropriate shall obtain signature on the Accession Agreement and shall return to PI with copy submitted to MMC.
 5. The PI shall include the Acceptance Verification from the curation institution in the Final Monitoring Report submitted to the RE or BI and MMC.
- D. Final Monitoring Report(s)
1. The PI shall submit one copy of the approved Final Monitoring Report to the RE or BI as appropriate, and one copy to MMC (even if negative), within 90 days after notification from MMC of the approved report.
 2. The RE shall, in no case, issue the Notice of Completion until receiving a copy of the approved Final Monitoring Report from MMC which includes the Acceptance Verification from the curation institution.

VII. IMPACT SIGNIFICANCE

The MND identified that all impacts would be mitigated to below a level of significance through mitigation. This Addendum also identifies that all significant project impacts would be mitigated to below a level of significance, consistent with the previously certified MND.

VIII. CERTIFICATION

Copies of the addendum, the adopted MND, and the Mitigation Monitoring and Reporting Program, and associated project-specific technical appendices, if any, may be reviewed online at www.sandiego.gov/ceqa, or purchased for the cost of reproduction.

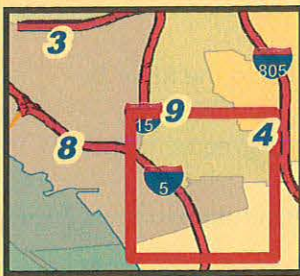

Jamie Kennedy, Senior Planner
Development Services Department

January 8, 2021
Date of Final Report

Analyst: Jamie Kennedy

Attachments:

1. Location Map
2. Predesign Sewer Map
3. Predesign Water Map
4. Mitigated Negative Declaration No. 255100/SCH No. 2011091045



The City of
SAN DIEGO Public Works

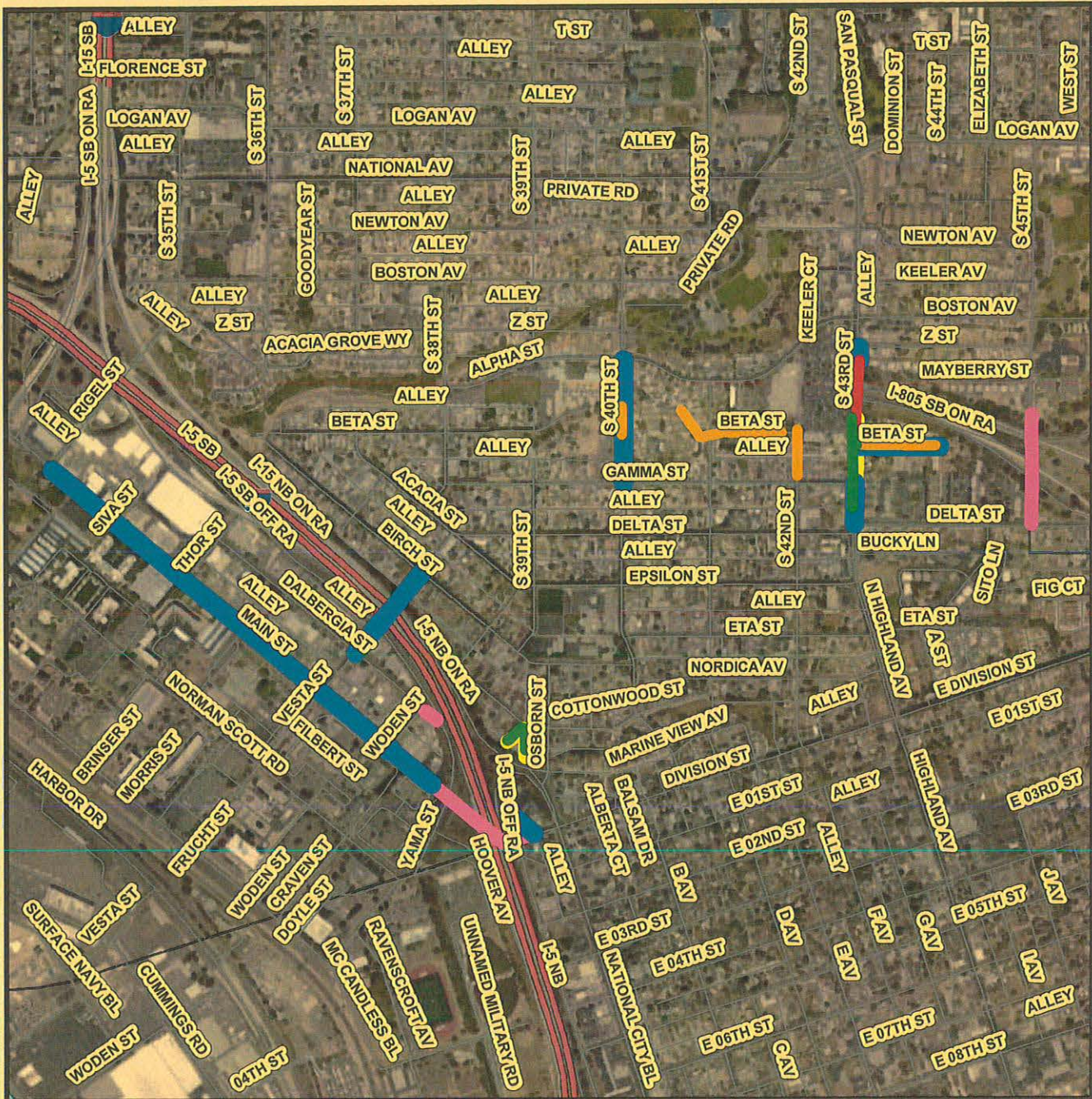
AC WATER AND SEWER GROUP 1052 A

SENIOR ENGINEER
Parita Ammerlahn
619-533-5406

PROJECT MANAGER
Shaza Nezha
619-533-4695

PROJECT ENGINEER
Noora Fathullah
619-235-1977

FOR QUESTIONS ABOUT THIS PROJECT
Call: 619-533-4207
Email: engineering@sandiego.gov



Legend

- | | |
|--|---|
| — New_Sewer | — New_Water |
| — Replaced_Sewer | — Replaced_Water |
| — Abandon Sewer | — Abandoned_Water |



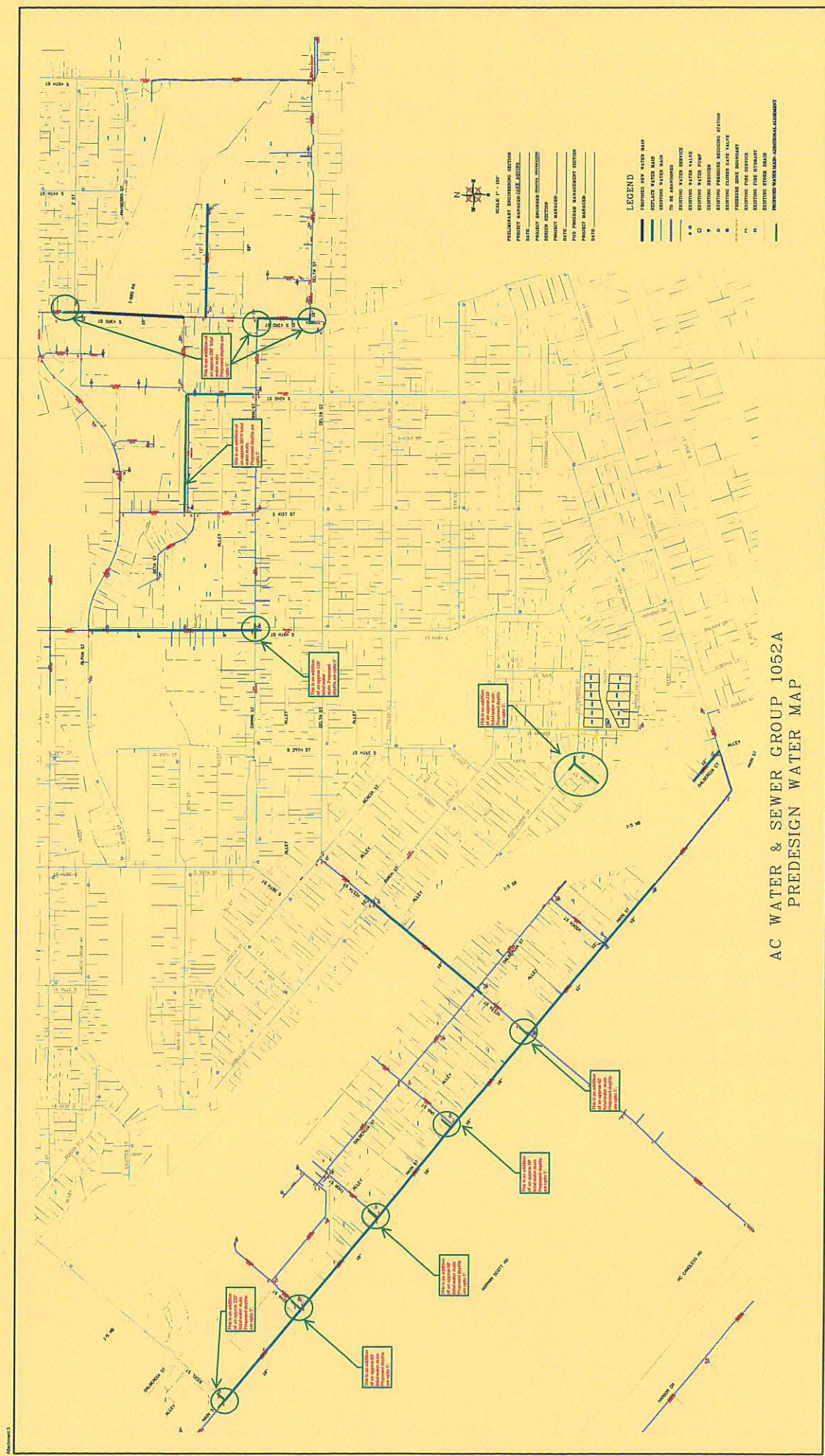
COMMUNITY NAME: SOUTHEASTERN
SANDIEGO, BARRIO LOGAN AND MILITARY
FACILITIES

COUNCIL DISTRICT: 8, 9

Date: December 19, 2019



SAP ID: B-19169 (S) \ B-19166 (W)



AC WATER & SEWER GROUP 1052A
PREDESIGN WATER MAP