



**Historical Resources Survey for the  
San Diego Fire-Rescue Air Operations  
Hangar Project  
(WBS #B-15012.02.02)**

*Prepared for*  
City of San Diego

*Submitted to*  
Platt/Whitelaw Architects, Inc.  
4034 30<sup>th</sup> Street  
San Diego, CA 92104  
Contact: Mr. Thomas Brothers

*Prepared by*  
RECON Environmental, Inc.  
1927 Fifth Avenue  
San Diego, CA 92101  
P 619.308.9333

RECON Number 9078  
December 16, 2019

A handwritten signature in black ink that reads "Carmen Zepeda-Herman".

Carmen Zepeda-Herman, M.A., Project Archaeologist

## ARCHAEOLOGICAL RESOURCE REPORT FORM

---

### I. PROJECT DESCRIPTION AND LOCATION

Phase II of the San Diego's Fire-Rescue Air Operations (AirOps) Facility Project (proposed project) would design and construct permanent helicopter hangars and support facilities at Montgomery-Gibbs Executive Airport. The project area is located in the northeastern corner of the airport in the Kearny Mesa community of the city of San Diego, California (Figure 1). The project area is within an unsectioned portion of the Mission San Diego landgrant on the U.S. Geological Survey 7.5-minute La Jolla quadrangle (Figure 2). Figure 3 shows the project location on a City 800' map. The project area consists of a 6.5-acre site located adjacent to the Air Traffic Control Tower between the Federal Aviation Administration (FAA) lease area, the Runway Object Free Area, and the Runway Protection Zone for the northwest approach to Runway 5/23 (Figure 4). Entry to the project area is via an asphalt road accessed from a security gate located off Ponderosa Avenue.

AirOps is a 24/7 365-day operating facility with no hangar space at Montgomery Field. A feasibility study concluded that 30,000 square feet of hangar space is required to meet future needs of the AirOps fleet. The proposed project would construct approximately 32,000 square feet of prefabricated metal hangar buildings, as well as an approximately 65,000-square-foot concrete apron, to accommodate five helicopters. The new hangar space would include a hangar support area for maintenance offices, over-haul, avionics, and storage rooms. The proposed project would also construct parking and shelter for a single Heli-tender and two fueling tender vehicles. Additionally, the proposed project would design and relocate existing utility connections (Sewer, Stormwater, Gas, Water, Power, etc.) within the main access roadway from Ponderosa Avenue. Once project construction and utility relocation is completed, the main access roadway would be repaired and resurfaced from Ponderosa Avenue to the FAA Air Traffic Control Tower and the new AirOps facility.

The project would also introduce storm water retention features that would capture runoff from the proposed improvements and a parking pad that would be constructed as a separate project adjacent to the southern project boundary. San Diego Fire-Rescue currently operates three helicopters consisting of two Bell 412 helicopters and one Lockheed Martin/SikorskyS70i Firehawk. The proposed hangars are intended to accommodate these three existing helicopters, as well as one additional Lockheed Martin/SikorskyS70i Firehawk and one additional Bell 412. In the future condition, the Bell 412 helicopters would take off and land from the existing concrete parking pad, while the Lockheed Martin/SikorskyS70i Firehawks would taxi from the proposed hangars along Taxiway Charlie to take off from Runway 5/23. The Lockheed Martin/SikorskyS70i Firehawks would also land at Runway 5/23 and taxi back to the proposed hangars along Taxiway Charlie.

---

### II. SETTING

#### Natural Environment (Past and Present)

The proposed project is located within the Montgomery-Gibbs Executive Airport on a portion of Kearny Mesa. The project elevation is approximately 420 feet above mean sea level (AMSL). Murphy Canyon is located east of the airport and Mission Valley is southeast. Residential and commercial development occurs surrounding the airport. The project area is covered in non-native weeds and grasses with some scattered buckwheat bushes.

The soil in the project area consists of Redding gravelly loam (RdC), 2 to 9 percent slopes. The Redding gravelly loam is gently rolling with low hummocks or mima mounds. The

Redding series consists of well-drained, undulating to steep gravelly loams that have a gravelly clay subsoil and a hardpan. These soils formed in old mixed cobbly and gravelly alluvium. They are located on dissected terraces (U.S. Department of Agriculture 1973).

### **Ethnography/History**

The prehistoric cultural sequence in San Diego County is generally conceived as comprising three basic periods: the Paleoindian, dated between about 11,500 and 8,500 years ago and manifested by the artifacts of the San Dieguito Complex; the Archaic, lasting from about 8,500 to 1,500 years ago (A.D. 500) and manifested by the cobble and core technology of the La Jolla Complex; and the Late Prehistoric, lasting from about 1,500 years ago to historic contact (i.e., A.D. 500 to 1769) and represented by the Cuyamaca Complex. This latest complex is marked by the appearance of ceramics, small arrow points, and cremation burial practices.

The Paleoindian Period in San Diego County is most closely associated with the San Dieguito Complex, as identified by Rogers (1938, 1939, 1945). The San Dieguito assemblage consists of well-made scraper planes, choppers, scraping tools, crescentics, elongated bifacial knives, and leaf-shaped points. The San Dieguito Complex is thought to represent an early emphasis on hunting (Warren et al. 1993:III-33).

The Archaic Period in coastal San Diego County is represented by the La Jolla Complex, a local manifestation of the widespread Millingstone Horizon. This period brings an apparent shift toward a more generalized economy and an increased emphasis on seed resources, small game, and shellfish. The local cultural manifestations of the Archaic Period are called the La Jolla Complex along the coast and the Pauma Complex inland. Pauma Complex sites lack the shell that dominates many La Jolla sites. Along with an economic focus on gathering plant resources, the settlement system appears to have been more sedentary. The La Jolla assemblage is dominated by rough, cobble-based choppers and scrapers, and slab and basin metates. Elko series projectile points appeared by about 3,500 years ago. Large deposits of marine shell at coastal sites argue for the importance of shellfish gathering to the coastal Archaic economy.

Near the coast and in the Peninsular Mountains beginning approximately 1,500 years ago, patterns began to emerge that suggest the ethnohistoric Kumeyaay. The Late Prehistoric Period is characterized by higher population densities and elaborations in social, political, and technological systems. Economic systems diversify and intensify during this period, with the continued elaboration of trade networks, the use of shell-bead currency, and the appearance of more labor-intensive but effective technological innovations. The late prehistoric archaeology of the San Diego coast and foothills is characterized by the Cuyamaca Complex. It is primarily known from the work of D. L. True at Cuyamaca Rancho State Park (True 1970). The Cuyamaca Complex is characterized by the presence of steatite arrowshaft straighteners, steatite pendants, steatite comales (heating stones), Tizon Brown ware pottery, ceramic figurines reminiscent of Hohokam styles, ceramic "Yuman bow pipes," ceramic rattles, miniature pottery, various cobble-based tools (e.g., scrapers, choppers, hammerstones), bone awls, manos and metates, mortars and pestles, and Desert Side-Notched (more common) and Cottonwood Series projectile points.

### **Ethnohistory**

The Kumeyaay (also known as Kamia, Ipai, Tipai, and Diegueño) occupied the southern two-thirds of San Diego County. The Kumeyaay lived in semi-sedentary, politically autonomous villages or rancherias. Settlement system typically consisted of two or more seasonal villages with temporary camps radiating away from these central places (Cline 1984a and 1984b).

Their economic system consisted of hunting and gathering, with a focus on small game, acorns, grass seeds, and other plant resources. The most basic social and economic unit was the patrilocal extended family. A wide range of tools was made of locally available and imported materials. A simple shoulder-height bow was utilized for hunting. Numerous other flaked stone tools were made including scrapers, choppers, flake-based cutting tools, and biface knives. Preferred stone types were locally available metavolcanics, cherts, and quartz. Obsidian was imported from the deserts to the north and east. Ground stone objects include mortars, manos, metates, and pestles typically made of locally available, fine-grained granite. Both portable and bedrock types are known. The Kumeyaay made fine baskets using either coiled or twined construction. The Kumeyaay also made pottery, utilizing the paddle-and-anvil technique. Most were a plain brown utility ware called Tizon Brown ware, but some were decorated (Meighan 1954; May 1976, 1978).

#### Spanish/Mexican/American Periods

The Spanish Period (1769–1821) represents a time of European exploration and settlement. Military and naval forces along with a religious contingent founded the San Diego Presidio, the pueblo of San Diego, and the San Diego Mission in 1769 (Rolle 1998). The mission system used forced Native American labor and introduced horses, cattle, other agricultural goods, and implements. Native American culture in the coastal strip of California rapidly deteriorated despite repeated attempts to revolt against the Spanish invaders (Cook 1976). One of the hallmarks of the Spanish colonial scheme was the rancho system. In an attempt to encourage settlement and development of the colonies, large land grants were made to meritorious or well-connected individuals.

In 1821, Mexico declared its independence from Spain. During the Mexican Period (1822–1848), the mission system was secularized by the Mexican government and these lands allowed for the dramatic expansion of the rancho system. The southern California economy became increasingly based on cattle ranching.

The Mexican Period came to a close when Mexico signed the Treaty of Guadalupe Hidalgo on February 2, 1848, concluding the Mexican–American War (1846–1848; Rolle 1998). Just prior to the signing of the Treaty of Guadalupe Hidalgo, gold was discovered in the northern California Sierra-Nevada foothills, the news was published on March 15, 1848, and the California Gold Rush began. The great influx of Americans and Europeans eliminated many remaining vestiges of Native American culture. California became a state in 1850.

The American homestead system encouraged settlement beyond the coastal plain into areas where Indians had retreated to avoid the worst of Spanish and Mexican influences (Carrico 1987; Cook 1976). A rural community cultural pattern existed in San Diego County from approximately 1870 to 1930. These communities were composed of an aggregate of people who lived on scattered farmsteads tied together through a common school district, church, post office, and country store (Hector and Van Wormer 1986; Pourade 1963).

The U.S. Army acquired 12,721 acres of what is now Kearny Mesa in 1917 to establish Camp Kearny, to be used as a mobilization and training camp for soldiers going to fight in Europe in World War I. Although not constructed during World War I, an airfield was established at Camp Kearny prior to its closure as an active army camp in 1920 and continued to be used through the 1920s and 1930s. The U.S. Navy began an expansion program at Camp Kearny in 1940, and the base was commissioned as Naval Auxiliary Air Station Camp Kearny in 1943. Concurrently with Navy use, the U.S. Marine Corps began using a portion of the base for maneuvers and gunnery ranges. During World War II, the Marine Corps also used the northern portion of Camp Kearny to process Marine squadrons en route to the South Pacific. In 1946, the Navy departed Camp Kearny, but returned when the Marines moved to Marine

Corps Air Station El Toro in 1947. The Marines returned in 1993, when the base was transferred back to the Marines.

Montgomery Airport was established in 1937 by William Gibbs. Initially known as Gibbs Field, Gibbs leased the field to Ryan School of Aeronautics for the training of U.S. Army Air Corps cadets in 1940 (City of San Diego 2016). The City of San Diego purchased the field from Gibbs in 1947, and in 1950 renamed it Montgomery Field, in honor of pioneer aviator John J. Montgomery.

Prior to the 1950s there was little non-military development on Kearny Mesa. This changed significantly in the later 1950s and 1960s. Substantial residential developments were constructed south and west of the project during this time. The area east of Interstate 805 took longer to develop, and when it did was predominately commercial, industrial, and research and development companies.

---

### **III. AREA OF POTENTIAL EFFECT (APE)**

The APE encompasses approximately 6.5 acres as shown in Figure 4. The APE would include a maximum excavation of 4 feet for the proposed hangars and 8 feet for the proposed utility lines within the access route from Ponderosa Avenue. The maximum height of the proposed hangars would be 42 feet.

---

### **IV. STUDY METHODS**

The cultural resources survey included both an archival search and an on-site foot survey of the APE. A records search with a one-mile radius buffer was requested from the South Coastal Information Center (SCIC) at San Diego State University in order to determine if previously recorded prehistoric or historic cultural resources occur on the project area.

A letter was sent to the Native American Heritage Commission (NAHC) on May 22, 2018, and again on May 30, 2019, requesting them to search their files to identify spiritually significant and/or sacred sites or traditional use areas in the proposed project vicinity. The NAHC was also asked to provide a list of local Native American tribes, bands, or individuals who may have concerns or interests in the cultural resources of the proposed project (Appendix A).

The field survey was conducted on June 13, 2018, by RECON archaeologist Harry Price accompanied by Kaci Brown, a Native American representative from Red Tail Environmental. The access road was not surveyed because of the lack of surface visibility. The spacing between the field personnel was 6 meters. The survey area was inspected for evidence of archaeological materials such as flaked and ground stone tools, ceramics, milling features, and historic features. Photographs were taken to document the environmental setting and general conditions.

---

### **V. RESULTS OF STUDY**

The record search indicated that there have been 43 cultural resources investigations and 3 recorded historic-era cultural resources, 1 prehistoric cultural resource, and 1 prehistoric isolated artifact within a one-mile radius of the proposed project (Confidential Appendix B). The prehistoric resource consisted of a lithic and shell scatter. The historic resources consist of industrial and commercial buildings. No previously recorded cultural resources are present within the proposed project area. A total of three historic addresses have been recorded within the search radius, none of which are within the proposed project area.

The results received from the NAHC on June 14, 2019 were positive. The NAHC indicated that the Viejas Band of Kumeyaay Indians should be contacted for further information (see Appendix A). RECON assumes that the City will conduct government-to-government consultation via Assembly Bill 52 with interested tribes.

The survey resulted in finding no cultural material. Survey conditions consisted of clear skies, bright sunlight, and a slight breeze with a temperature of approximately 75 degrees. The project area is mowed on a regular basis for weed control, increasing ground visibility. Ground visibility averaged 70 percent (Photograph 1). Large patches of reddish sandstone and cobble lenses cover the ground surface in much of the survey area (Photograph 2). The APE has been scraped in the past, probably for the initial brushing of the area, exposing subsoils. Numerous broken cobbles were noted on the surface. The cobbles were likely broken as a result of past scraping and mowing and/or from natural fracturing. Surface gravel and small amounts of concrete and asphalt pieces were in the area between the existing control tower and the runway. The large landing pad at the southwest end of the survey area was not surveyed, as well as the taxi lane along the western edge of the survey area because the ground surface is covered by either asphalt or concrete in both these locations.


## VI. RECOMMENDATIONS

No cultural resources were identified in the APE. The cultural resource investigations summarized herein satisfy the study and documentation requirements identified by City of San Diego Development Services staff and are consistent with the goals and policies of the City of San Diego as published in the Land Development Manual. As such, the efforts to identify and document historical resources in the APE for the proposed project reveal that the proposed project will have no impact on prehistoric cultural resources.

The possibility of significant historical resources being present within the proposed project is considered low. The topsoil within the APE has been scraped away in the past, leaving no suitable areas where potentially significant prehistoric or historic cultural resources could be present. RECON recommends no further cultural resources work; construction monitoring is not recommended.

VII. SOURCES CONSULTED	DATE
National Register of Historic Places <input checked="" type="checkbox"/>	Month and Year: July 2018
California Register of Historical Resources <input checked="" type="checkbox"/>	Month and Year: July 2018
City of San Diego Historical Resources Register <input checked="" type="checkbox"/>	Month and Year: July 2018
Archaeological/Historical Site Records: South Coastal Information Center <input checked="" type="checkbox"/>	Month and Year: June 2018
Other Sources Consulted:	

## VIII. CERTIFICATION

Preparer: Carmen Zepeda-Herman, M.A.	Title: Principal Investigator
Signature: 	Date: December 16, 2019

## **IX. ATTACHMENTS**

---

Bibliography  
Attached

National Archaeological Data Base Information  
Attached

Maps (include all of the following maps.)

- Figure 1: Regional Location
- Figure 2: Project Location on USGS Map
- Figure 3: Project Location on City 800' Map
- Figure 4: Project Location on Aerial Photograph

Photographs

- Photograph 1: Typical Ground Cover, Looking East from the Runway
- Photograph 2: Exposed Subsoil, Looking North-northeast with Runway on the Left and FAA Building on the Right

Personnel Qualifications (Include resumes if not already on file with the City.)  
Resumes are already on file with the City.

## **X. APPENDICES**

---

Native American Heritage Commission Correspondence (Appendix A)  
Letter dated June 14, 2019

Record search results (Confidential Appendix B)  
Records search results from South Coastal Information Center.

New or updated historical resource records  
None.

## BIBLIOGRAPHY

---

Carrico, Richard L.

- 1987 *Strangers in a Stolen Land. American Indians in San Diego 1850-1880.* Sierra Oaks Publishing, Newcastle, California.

Cline, Lora L.

- 1984a *Just Before Dawn.* L. C. Enterprises, Tombstone, Arizona.
- 1984b *Just Before Sunset.* J and L Enterprises, Jacumba, California.

Cook, Sherburne F.

- 1976 *The Population of California Indians, 1769-1970.* Berkeley: University of California Press.

Hector, Susan M., and Stephen R. Van Wormer

- 1986 Broken Fragments of Past Lifeways: Archaeological Excavations at Los Peñasquitos Ranch House, Volumes I and II. RECON.

May, Ronald V.

- 1976 An Early Ceramic Date Threshold in Southern California. *Masterkey* 50(3):103-107.
- 1978 A Southern California Indigenous Ceramic Typology: A Contribution to Malcolm J. Rogers Research. *ASA Journal* 2:2.

Meighan, Clement W.

- 1954 A Late Complex in Southern California Prehistory. *Southwestern Journal of Anthropology* 10:215-227.

Pourade, Richard F. (editor)

- 1963 *The Silver Dons.* The History of San Diego. Union-Tribune Publishing, San Diego, California.

Rogers, Malcolm J.

- 1938 Archaeological and Geological Investigations of the Culture Levels in an Old Channel of San Dieguito Valley. *Carnegie Institution of Washington Yearbook* 37:344-45.
- 1939 Early Lithic Industries of the Lower Basin of the Colorado River and Adjacent Desert Areas. *San Diego Museum of Man Papers* 3.
- 1945 An Outline of Yuman Prehistory. *Southwestern Journal of Anthropology* 1(2):167-198. Albuquerque.

Rolle, Andrew

- 1998 *California: A History.* Harlan Davidson, Inc. Wheeling, Illinois.

San Diego, City of

- 2016 Montgomery-Gibbs Executive Airport. Accessed on July 9, 2018. Available at <https://www.sandiego.gov/airports/montgomery>.



True, Delbert L.

- 1970 *Investigation of a Late Prehistoric Complex in Cuyamaca Rancho State Park, San Diego County, California*. Department of Anthropology Publications, University of California, Los Angeles.

U.S. Department of Agriculture (USDA)

- 1973 *Soil Survey San Diego Area, California*. Soil Conservation Service.

Warren, Claude N., Gretchen Siegler, and Frank Dittmer

- 1993 Paleoindian and Early Archaic Periods. In *Historic Properties Background Study for the City of San Diego Clean Waste Program*. On file with Mooney and Associates.

## NATIONAL ARCHAEOLOGICAL DATA BASE INFORMATION

Authors: Carmen Zepeda-Herman, RPA

Consulting Firm: RECON Environmental  
1927 Fifth Avenue  
San Diego, CA 92101-2358

Report Date: December 16, 2019

Report Title: Historical Resources Survey for the City of San Diego Fire-Rescue Air Ops Hangar Project, San Diego, California

Prepared for: City of San Diego

Submitted to: Thomas Brothers  
Platt/Whitelaw Architects, Inc.  
4034 30<sup>th</sup> Street  
San Diego, California 92104

Contract Number: RECON 9078

USGS Quadrangle Map: La Jolla Quadrangle

Keywords: Negative survey, Montgomery Field

### ABSTRACT

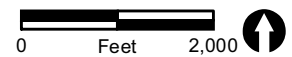
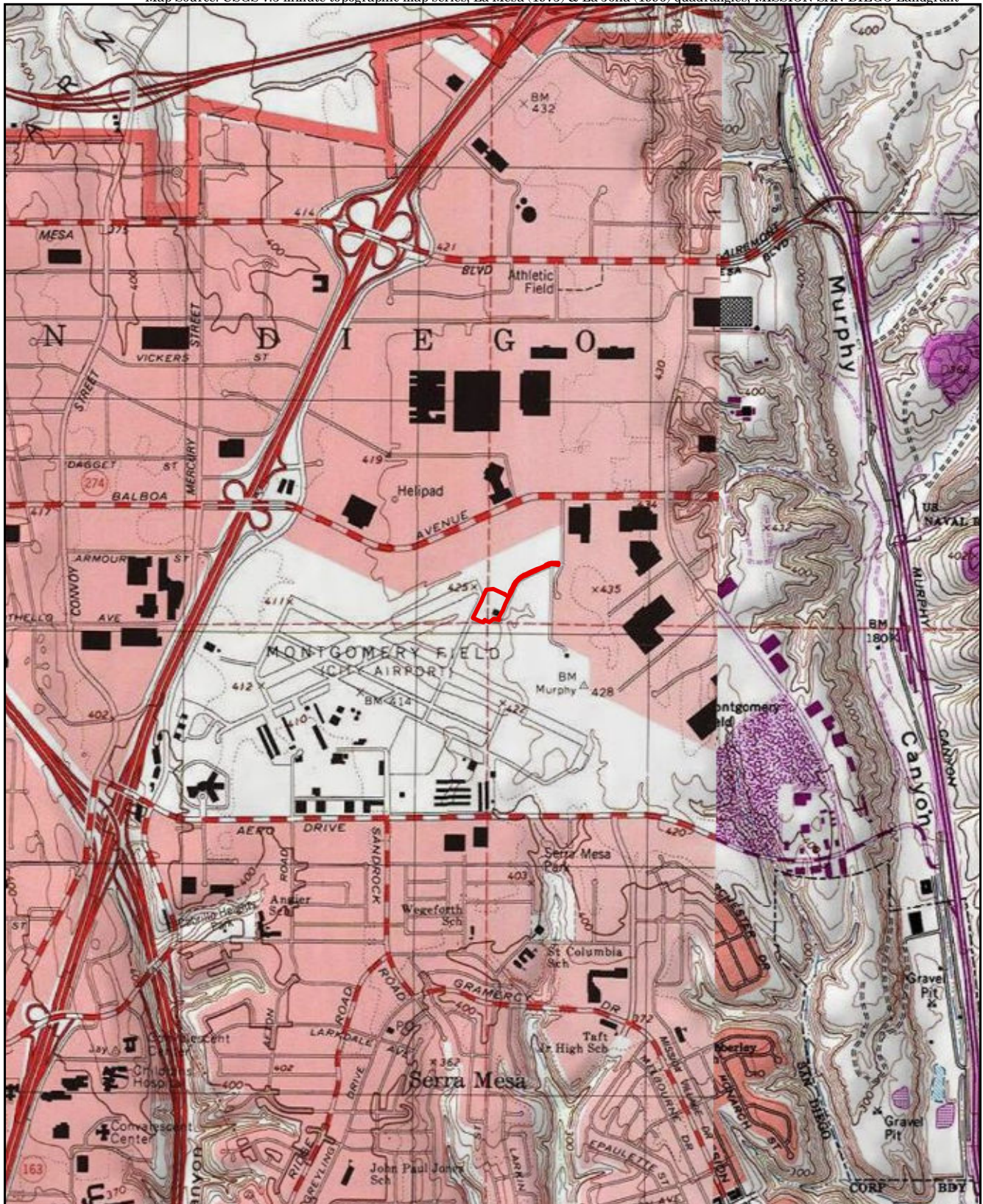
A cultural resources survey was conducted for the San Diego Fire-Rescue Air Ops Hangar project within the Montgomery-Gibbs Executive Airport in the City of San Diego. The survey included a records search at the South Coastal Information Center and a sacred lands search from the Native American Heritage Commission. Three historic-era cultural resources, one prehistoric cultural resource, one prehistoric isolated artifact, and three historic addresses have been recorded within a one-mile radius of the project. None of the previously recorded cultural resources are within the project APE. The Native American Heritage Commission files indicated that no sites have been located within the project area.

A RECON archaeologist and Native American monitor from Red Tail Monitoring and Research completed a field survey on June 13, 2018. No cultural resources were identified. The possibility of significant historical resources being present within the proposed project is considered low. The topsoil within the APE has been scraped away in the past, leaving no suitable areas where potentially significant prehistoric or historic cultural resources could be present. RECON recommends no further cultural resources work; construction monitoring is not recommended.



FIGURE 1  
Regional Location



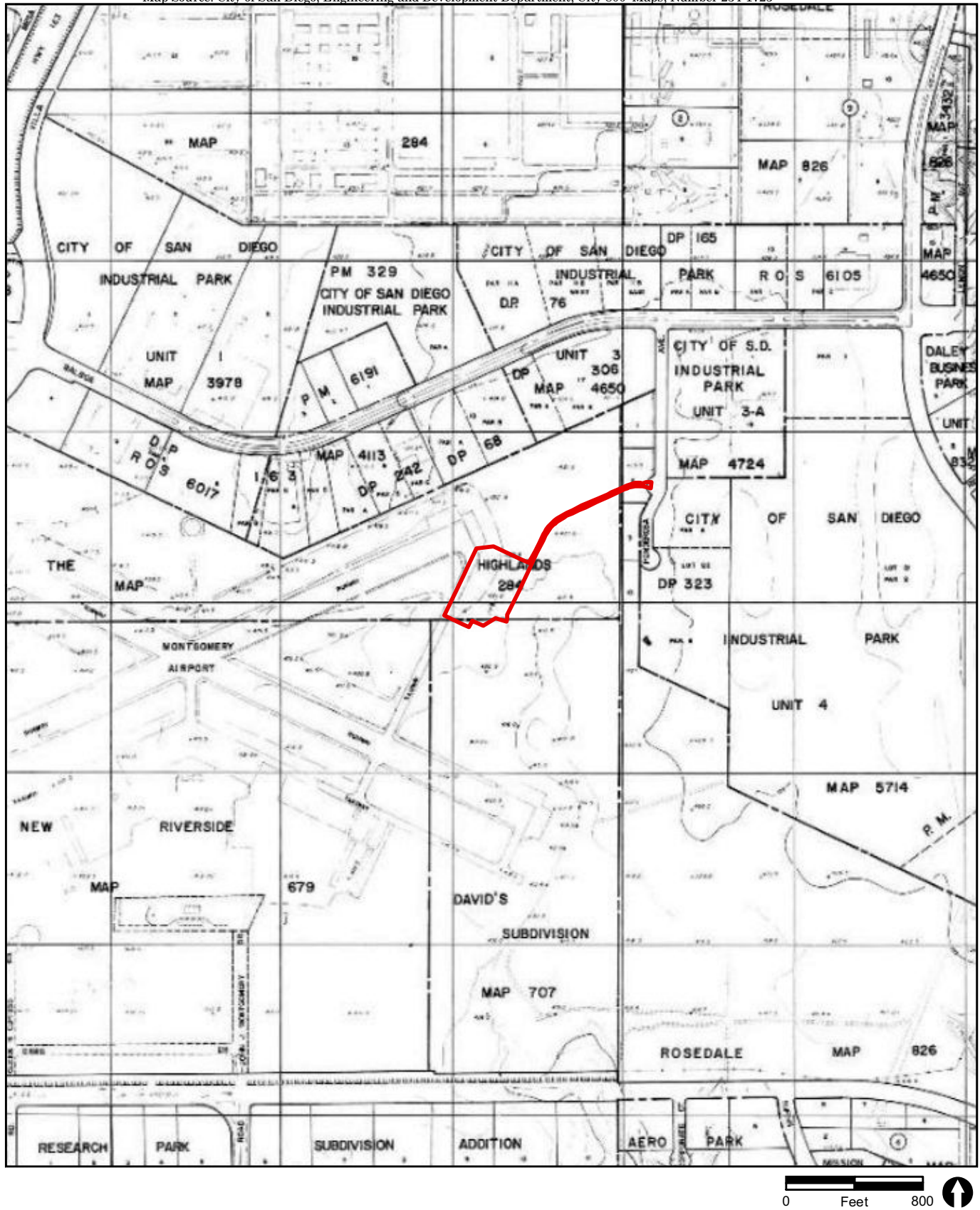


Project Boundary

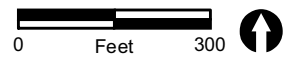
FIGURE 2

Project Location on USGS Map









 Project Boundary





PHOTOGRAPH 1  
Typical Ground Cover, Looking East from the Runway



PHOTOGRAPH 2  
Exposed Subsoil, Looking North-Northeast with Runway on the Left  
and FAA Building on the Right

**APPENDIX A**

**Native American Heritage Commission**  
**Correspondence**



NATIVE AMERICAN HERITAGE COMMISSION  
Cultural and Environmental Department  
1550 Harbor Blvd., Suite 100  
West Sacramento, CA 95691  
Phone: (916) 373-3710  
Email: [nahc@nahc.ca.gov](mailto:nahc@nahc.ca.gov)  
Website: <http://www.nahc.ca.gov>  
Twitter: @CA\_NAHC



June 14, 2019

Carmen Zepeda-Herman  
RECON Environmental

VIA Email to: [czepeda@reconenvironmental.com](mailto:czepeda@reconenvironmental.com)

RE: San Diego Fire Rescue Air Ops Project, San Diego County

Dear Ms. Zepeda-Herman:

A record search of the Native American Heritage Commission (NAHC) Sacred Lands File (SLF) was completed for the information you have submitted for the above referenced project. The results were positive. Please contact the Viejas Band of Kumeyaay Indians on the attached list for more information. Other sources of cultural resources should also be contacted for information regarding known and recorded sites.

Attached is a list of Native American tribes who may also have knowledge of cultural resources in the project area. This list should provide a starting place in locating areas of potential adverse impact within the proposed project area. I suggest you contact all of those indicated; if they cannot supply information, they might recommend others with specific knowledge. By contacting all those listed, your organization will be better able to respond to claims of failure to consult with the appropriate tribe. If a response has not been received within two weeks of notification, the Commission requests that you follow-up with a telephone call or email to ensure that the project information has been received.

If you receive notification of change of addresses and phone numbers from tribes, please notify the NAHC. With your assistance, we can assure that our lists contain current information. If you have any questions or need additional information, please contact me at my email address: [steven.quinn@nahc.ca.gov](mailto:steven.quinn@nahc.ca.gov).

Sincerely,

A handwritten signature in blue ink that reads "Steven Quinn".

Steven Quinn  
Associate Governmental Program Analyst

Attachment

**Native American Heritage Commission  
Native American Contact List  
San Diego County  
6/14/2019**

***Barona Group of the Capitan Grande***

Edwin Romero, Chairperson  
1095 Barona Road Diegueno  
Lakeside, CA, 92040  
Phone: (619) 443 - 6612  
Fax: (619) 443-0681  
cloyd@barona-nsn.gov

***Campo Band of Diegueno Mission Indians***

Ralph Goff, Chairperson  
36190 Church Road, Suite 1 Diegueno  
Campo, CA, 91906  
Phone: (619) 478 - 9046  
Fax: (619) 478-5818  
rgoff@campo-nsn.gov

***Ewiiapaayp Tribe***

Robert Pinto, Chairperson  
4054 Willows Road Diegueno  
Alpine, CA, 91901  
Phone: (619) 445 - 6315  
Fax: (619) 445-9126  
wmicklin@leaningrock.net

***Ewiiapaayp Tribe***

Michael Garcia, Vice Chairperson  
4054 Willows Road Diegueno  
Alpine, CA, 91901  
Phone: (619) 445 - 6315  
Fax: (619) 445-9126  
michaelg@leaningrock.net

***Iipay Nation of Santa Ysabel***

Virgil Perez, Chairperson  
P.O. Box 130 Diegueno  
Santa Ysabel, CA, 92070  
Phone: (760) 765 - 0845  
Fax: (760) 765-0320

***Iipay Nation of Santa Ysabel***

Clint Linton, Director of Cultural Resources  
P.O. Box 507 Diegueno  
Santa Ysabel, CA, 92070  
Phone: (760) 803 - 5694  
cjlinton73@aol.com

***Inaja-Cosmit Band of Indians***

Rebecca Osuna, Chairperson  
2005 S. Escondido Blvd. Diegueno  
Escondido, CA, 92025  
Phone: (760) 737 - 7628  
Fax: (760) 747-8568

***Jamul Indian Village***

Erica Pinto, Chairperson  
P.O. Box 612 Diegueno  
Jamul, CA, 91935  
Phone: (619) 669 - 4785  
Fax: (619) 669-4817  
epinto@jiv-nsn.gov

***Kwaaymii Laguna Band of Mission Indians***

Carmen Lucas,  
P.O. Box 775 Kwaaymii  
Pine Valley, CA, 91962 Diegueno  
Phone: (619) 709 - 4207

***La Posta Band of Diegueno Mission Indians***

Javaughn Miller, Tribal Administrator  
8 Crestwood Road Diegueno  
Boulevard, CA, 91905  
Phone: (619) 478 - 2113  
Fax: (619) 478-2125  
jmiller@LPtribe.net

***La Posta Band of Diegueno Mission Indians***

Gwendolyn Parada, Chairperson  
8 Crestwood Road Diegueno  
Boulevard, CA, 91905  
Phone: (619) 478 - 2113  
Fax: (619) 478-2125  
LP13boots@aol.com

***Manzanita Band of Kumeyaay Nation***

Angela Elliott Santos, Chairperson  
P.O. Box 1302 Diegueno  
Boulevard, CA, 91905  
Phone: (619) 766 - 4930  
Fax: (619) 766-4957

This list is current only as of the date of this document. Distribution of this list does not relieve any person of statutory responsibility as defined in Section 7050.5 of the Health and Safety Code, Section 5097.94 of the Public Resource Section 5097.98 of the Public Resources Code.

This list is only applicable for contacting local Native Americans with regard to cultural resources assessment for the proposed San Diego Fire Rescue Air Ops Project, San Diego County.

**Native American Heritage Commission  
Native American Contact List  
San Diego County  
6/14/2019**

***Mesa Grande Band of Diegueno  
Mission Indians***

Michael Linton, Chairperson  
P.O Box 270 Diegueno  
Santa Ysabel, CA, 92070  
Phone: (760) 782 - 3818  
Fax: (760) 782-9092  
mesagrandeband@msn.com

***Viejas Band of Kumeyaay  
Indians***

Robert Welch, Chairperson  
1 Viejas Grade Road Diegueno  
Alpine, CA, 91901  
Phone: (619) 445 - 3810  
Fax: (619) 445-5337

***San Pasqual Band of Diegueno  
Mission Indians***

John Flores, Environmental  
Coordinator  
P. O. Box 365 Diegueno  
Valley Center, CA, 92082  
Phone: (760) 749 - 3200  
Fax: (760) 749-3876  
johnf@sanpasqualtribe.org

***Viejas Band of Kumeyaay  
Indians***

Ernest Pingleton, Tribal Historic  
Officer, Resource Management  
1 Viejas Grade Road Diegueno  
Alpine, CA, 91901  
Phone: (619) 659 - 2314  
epingleton@viejas-nsn.gov

***San Pasqual Band of Diegueno  
Mission Indians***

Allen Lawson, Chairperson  
P.O. Box 365 Diegueno  
Valley Center, CA, 92082  
Phone: (760) 749 - 3200  
Fax: (760) 749-3876  
allenl@sanpasqualtribe.org

***Sycuan Band of the Kumeyaay  
Nation***

Cody J. Martinez, Chairperson  
1 Kwaaypaay Court Kumeyaay  
El Cajon, CA, 92019  
Phone: (619) 445 - 2613  
Fax: (619) 445-1927  
ssilva@sycuan-nsn.gov

***Sycuan Band of the Kumeyaay  
Nation***

Lisa Haws, Cultural Resources  
Manager  
1 Kwaaypaay Court Kumeyaay  
El Cajon, CA, 92019  
Phone: (619) 312 - 1935  
lhaws@sycuan-nsn.gov

This list is current only as of the date of this document. Distribution of this list does not relieve any person of statutory responsibility as defined in Section 7050.5 of the Health and Safety Code, Section 5097.94 of the Public Resource Section 5097.98 of the Public Resources Code.

This list is only applicable for contacting local Native Americans with regard to cultural resources assessment for the proposed San Diego Fire Rescue Air Ops Project, San Diego County.

**CONFIDENTIAL APPENDIX B**  
**Record Search (Not for Public Review)**