

# Item 5

## Midway-Pacific Highway CPU

March 22, 2018

Historical Resources Board

# Background

- Began in 2009
- Historic Resources Reconnaissance Survey
  - Historic Context
  - Reconnaissance Field Survey
- Prehistoric Cultural Resources Study
  - Environmental & Cultural Setting
  - Cultural Sensitivity Analysis
- Historic Preservation Element
  - Informed by Technical Studies and Outreach
- Public Outreach



# Historic Context Statement

## Historic Context Statement

- Identifies Important Themes & Property Types

## Periods and Themes Identified

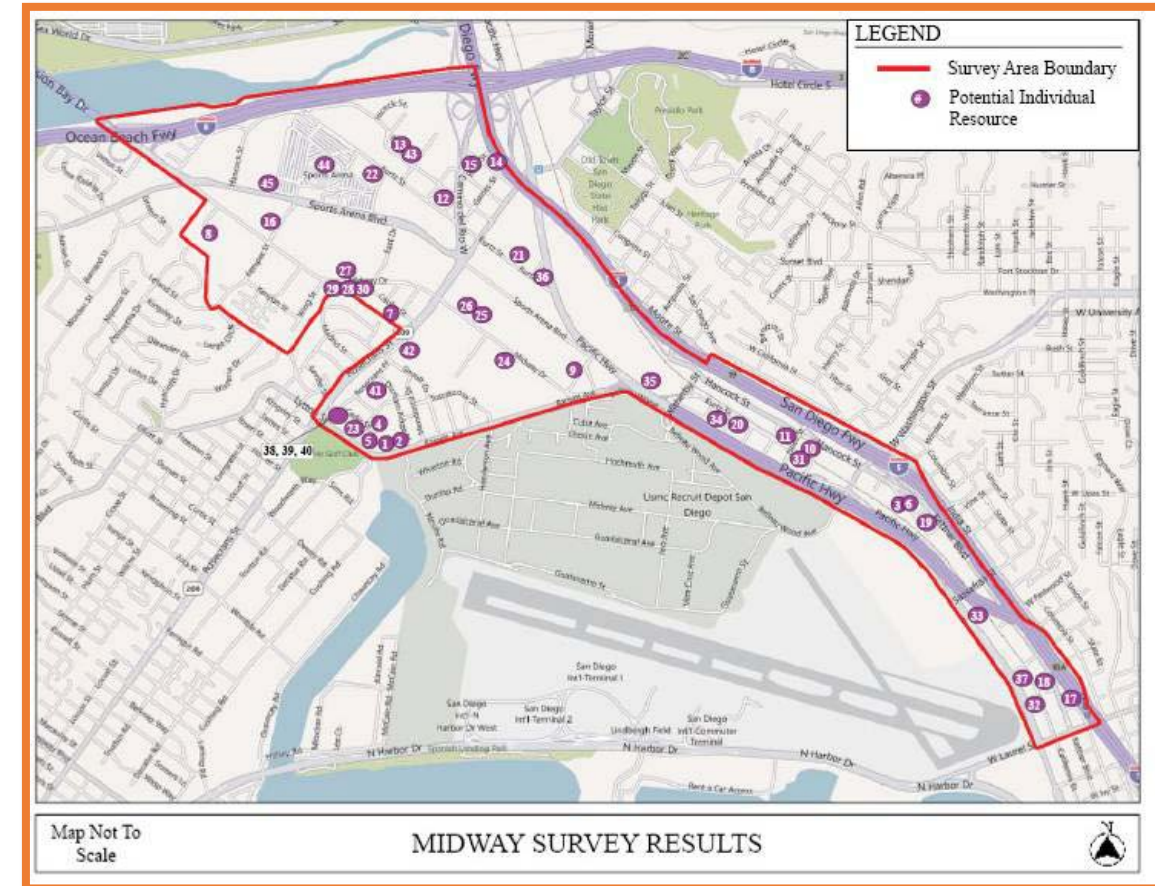
- Spanish Period (1769-1822)
- Mexican Period (1822-1846)
- American Period (1846-1970)
  - Theme: Transportation Improvements and Early Industrial Development (1882-1914)
  - Theme: Military, Aerospace, and Related Industrial Development (1901-1953)
  - Theme: Post War Commercial and Residential Development (1945-1970)



# Historic Resources Reconnaissance Survey

## Detailed Reconnaissance Survey

- 228 Properties Surveyed
- 43 Potentially Significant Individual Properties
- No Potential Historic Districts Identified
- No MPLs Identified

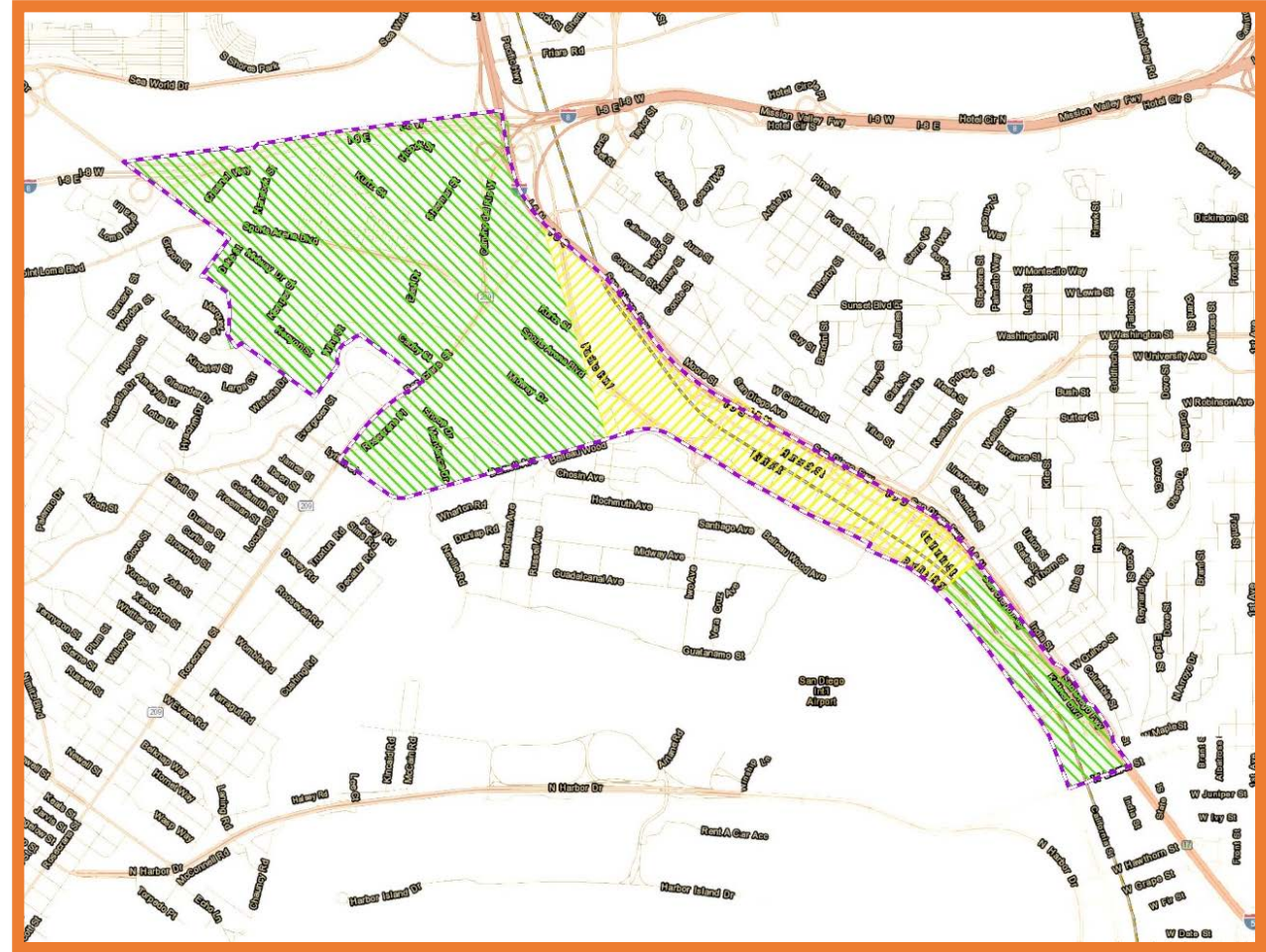




# Prehistoric Cultural Resources Study

## Conclusions:

- Moderate (*yellow*) and Low (*green*) Cultural Sensitivity Levels
- Native American Participation for All Levels of Future Investigations
- Future Survey of Undeveloped Areas
- Further Evaluation and/or Monitoring of Developed Areas



# Historic Preservation Element

- Goals
  - Identify and Preserve Significant Historical Resources in the Midway-Pacific Highway Community.
  - Create Commemorative, Interpretive and Educational Opportunities Related to Historical Resources in the Midway-Pacific Highway Community and Pursue Incentives for Historic Preservation and Adaptive Reuse
- Policies Work to Achieve the Goals of the Element



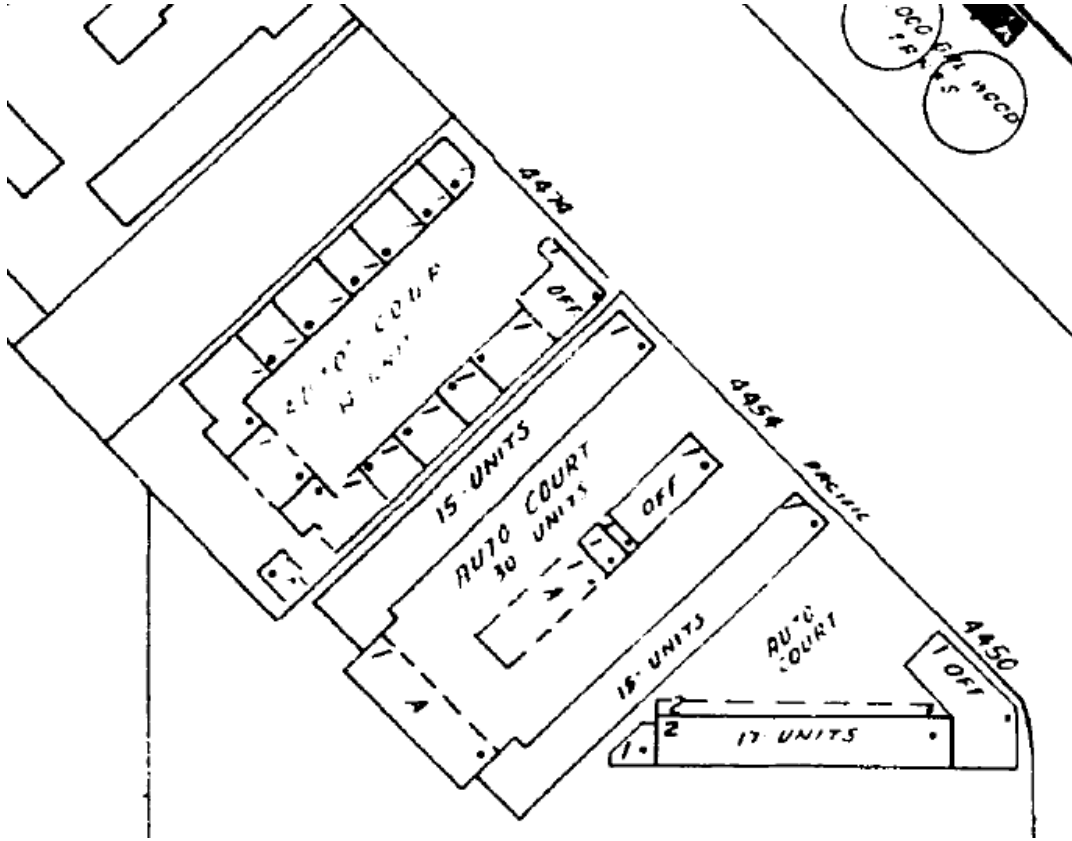
# Program Environmental Impact Report (PEIR)

- Concludes Significant Impacts to Historical Resources, Archaeological Resources, Sacred Sites, Human Remains and Tribal Cultural Resources.
  - Mitigation Framework Provided for Development Projects Impacting These Resources.
  - Impacts to All Resources Significant and Unavoidable Even With Mitigation.
- PEIR Posted for Public Review on December 20, 2017
  - Comments Received Will Not Result in Changes to the PEIR.

## Comments Received from SOHO

- Include MPL Related to Aerospace Industry
  - Response: Policy Added to HPE
- Include MPL Related to Auto-Courts
  - Response: Only 1 Eligible Auto-Court Identified in the Planning Area. If City-Wide MPL is Pursued, MPH Community Would be Included.
- Include Property at 4450 Pacific Highway in the Survey as a Potential Resource.
  - Response: Was Evaluated by Survey and Determined Ineligible.





## Recommendation

Recommend to the City Council adoption of:

- the Midway-Pacific Highway Community Plan Area Historic Resources Reconnaissance Survey (Reconnaissance Survey);
- the Prehistoric Cultural Resources Study (Cultural Resources Study);
- the Historic Preservation Element of the Midway-Pacific Highway Community Plan Update (HPE); and
- the Program Environmental Impact Report (PEIR) related to Cultural/Historical Resources.

