

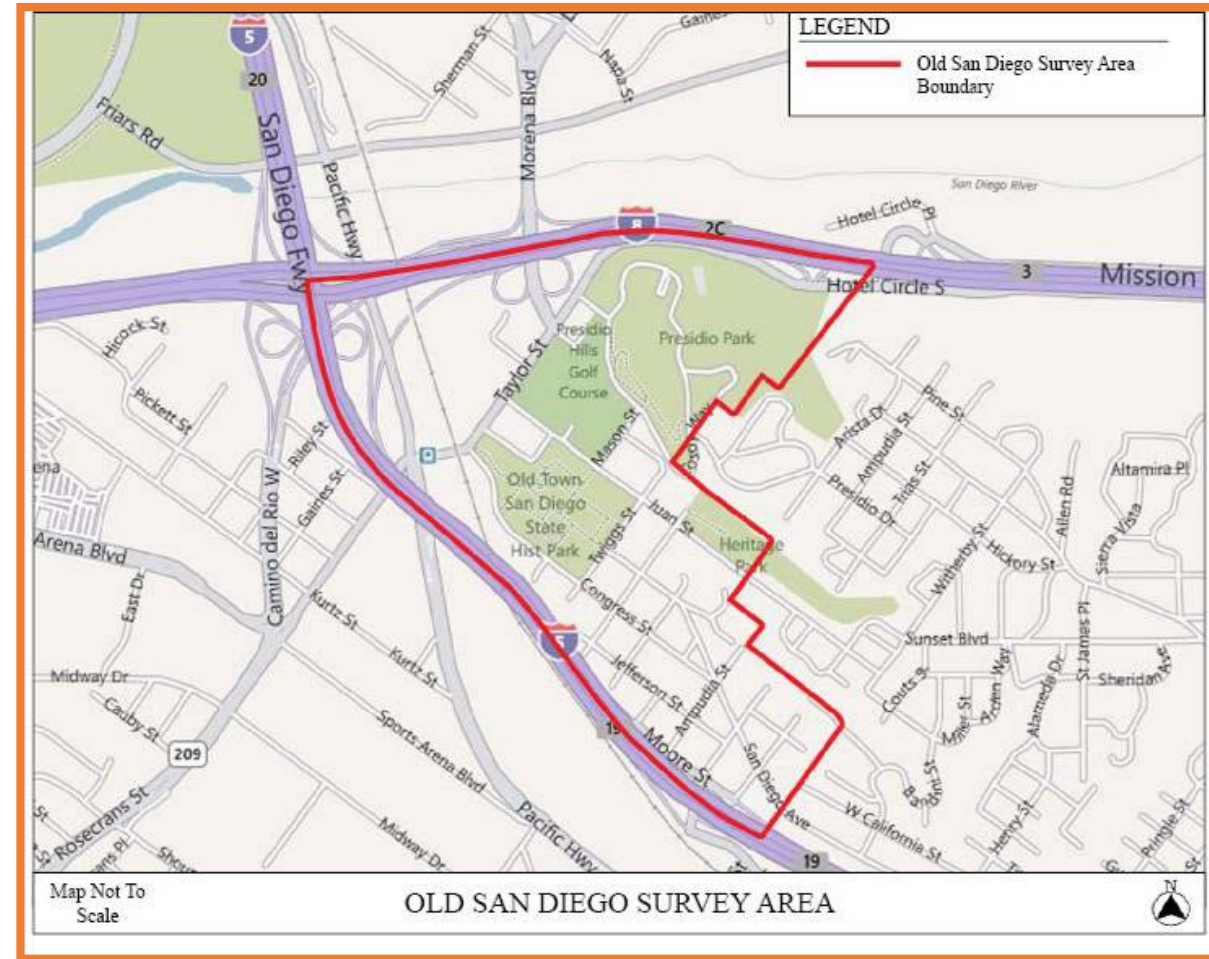
# Item 5

## Old Town CPU

April 26, 2018  
Historical Resources Board

# Background

- Began in 2009
- Historic Resources Reconnaissance Survey
  - Historic Context
  - Reconnaissance Field Survey
- Prehistoric Cultural Resources Study
  - Environmental & Cultural Setting
  - Cultural Sensitivity Analysis
- Historic Preservation Element
  - Informed by Technical Studies and Outreach
- Public Outreach



# Historic Resources Reconnaissance Survey

## Historic Context Statement

- Identifies Important Themes & Property Types

## Periods and Themes Identified

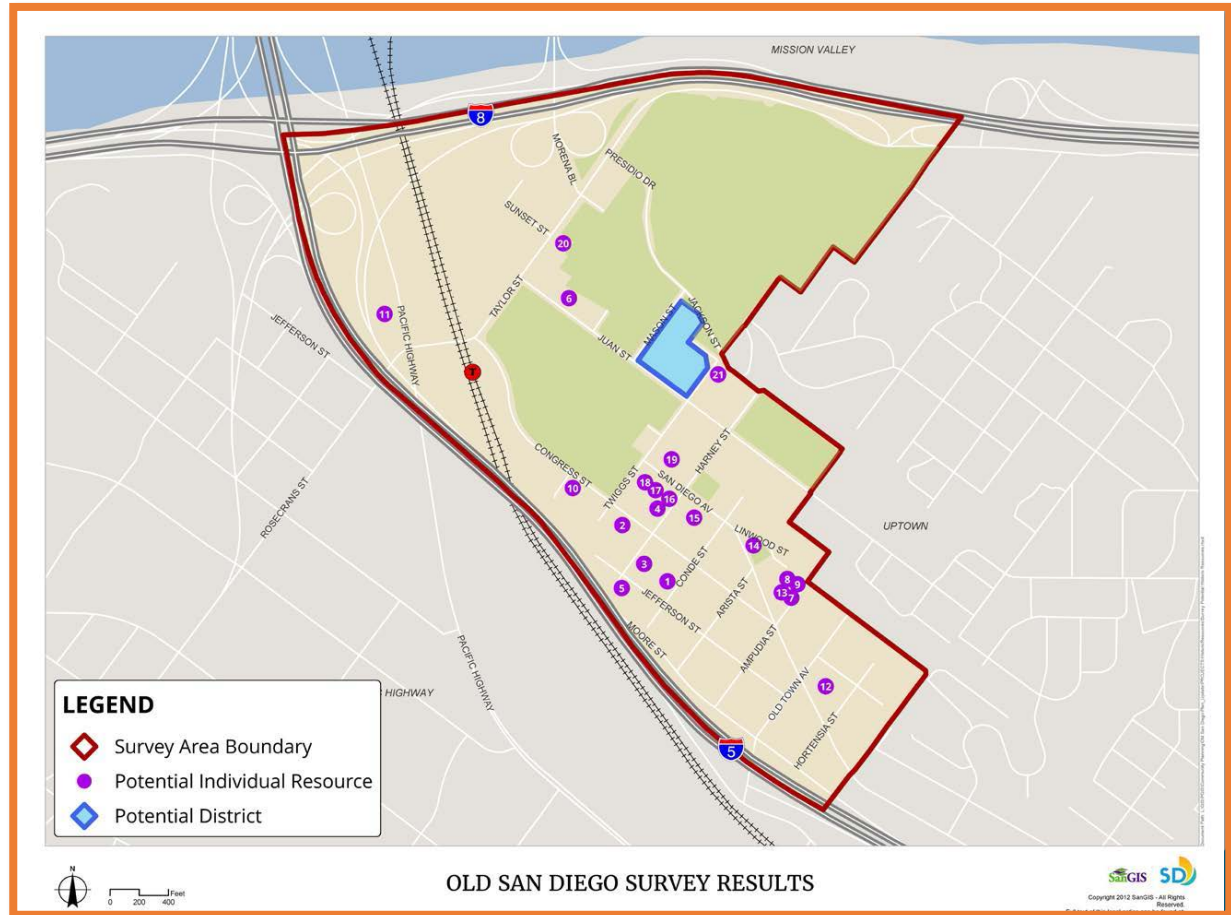
- Spanish Period (1769-1821)
- Mexican Period (1821-1846)
- American Period (1846-1970)
  - Theme: American Transition Period (1846-1872)
  - Theme: Early American Development and Industrialization (1873-1929)
  - Theme: Automobile, Early Tourism and Preservation in Old Town
  - Theme: Great Depression and World War II (1930-1945)
  - Theme: Post World War II (1946-1970)



# Historic Resources Reconnaissance Survey

## Detailed Reconnaissance Survey

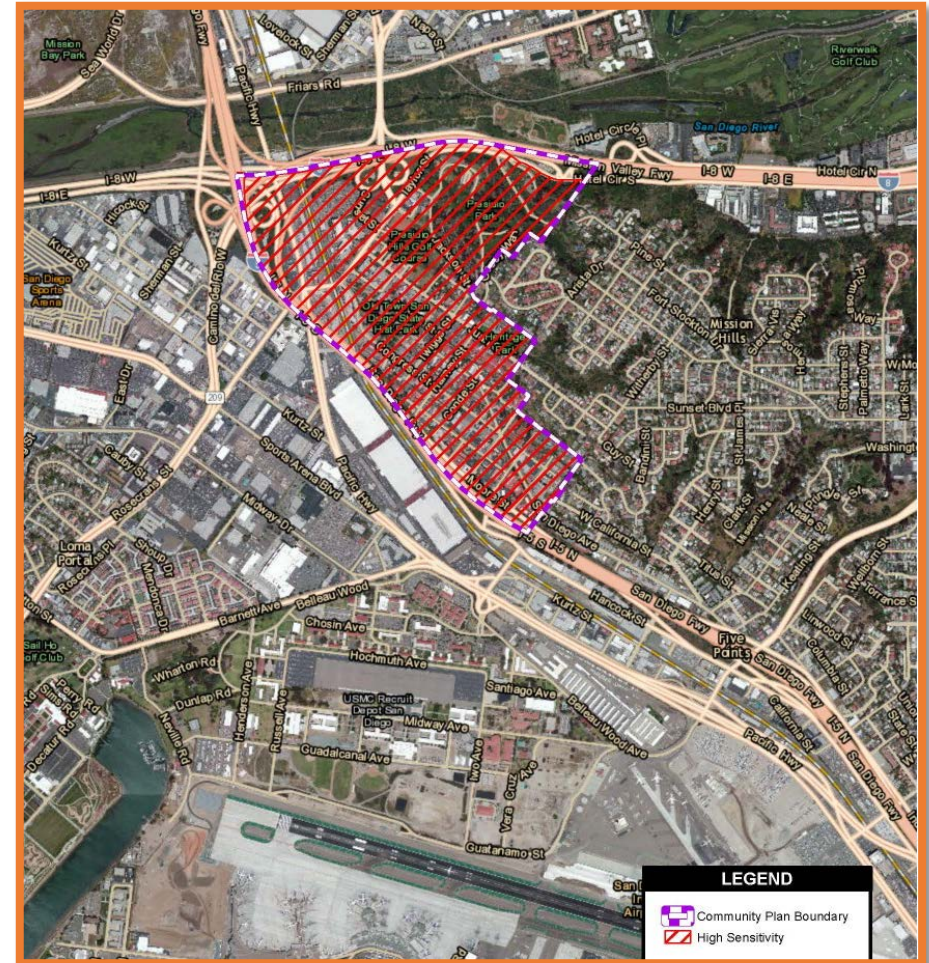
- 143 Properties Surveyed
- 21 Potentially Significant Individual Properties
- 1 Potential Historic District Identified
  - George Marston Potential Historic District
- No MPLs Identified



# Prehistoric Cultural Resources Study

## Conclusions:

- High (*red*) Cultural Sensitivity Level
- Native American Participation for All Levels of Future Investigations
- Future Survey of Undeveloped Areas
- Further Evaluation and/or Monitoring of Developed Areas



# Historic Preservation Element

- Goals
  - Identification and preservation of significant historical resources in Old Town.
  - Identification of educational opportunities and incentives related to historical resources in Old Town.
- Policies Work to Achieve the Goals of the Element



# Program Environmental Impact Report (PEIR)

- Concludes Significant Impacts to Historical Resources, Archaeological Resources, Sacred Sites, Human Remains and Tribal Cultural Resources.
  - Mitigation Framework Provided for Development Projects Impacting These Resources.
  - Impacts to All Resources Significant and Unavoidable Even With Mitigation.
- PEIR Posted for Public Review on January 12, 2018
  - Comments Received Will Not Result in Changes to the PEIR.

## Comments Received from SOHO

- Include MPL Related to Auto-Courts
  - Response: Only 1 Eligible Auto-Court Identified in the Planning Area.  
If City-Wide MPL is Pursued, MPH Community Would be Included.

## Recommendation

Recommend to the City Council adoption of:

- the Old Town Community Plan Area Historic Resources Reconnaissance Survey (Reconnaissance Survey);
- the Prehistoric Cultural Resources Study (Cultural Resources Study);
- the Historic Preservation Element of the Old Town Community Plan Update (HPE); and
- the Program Environmental Impact Report (PEIR) related to Cultural/Historical Resources.



Thank you