

Info Item A

Mission Valley CPU

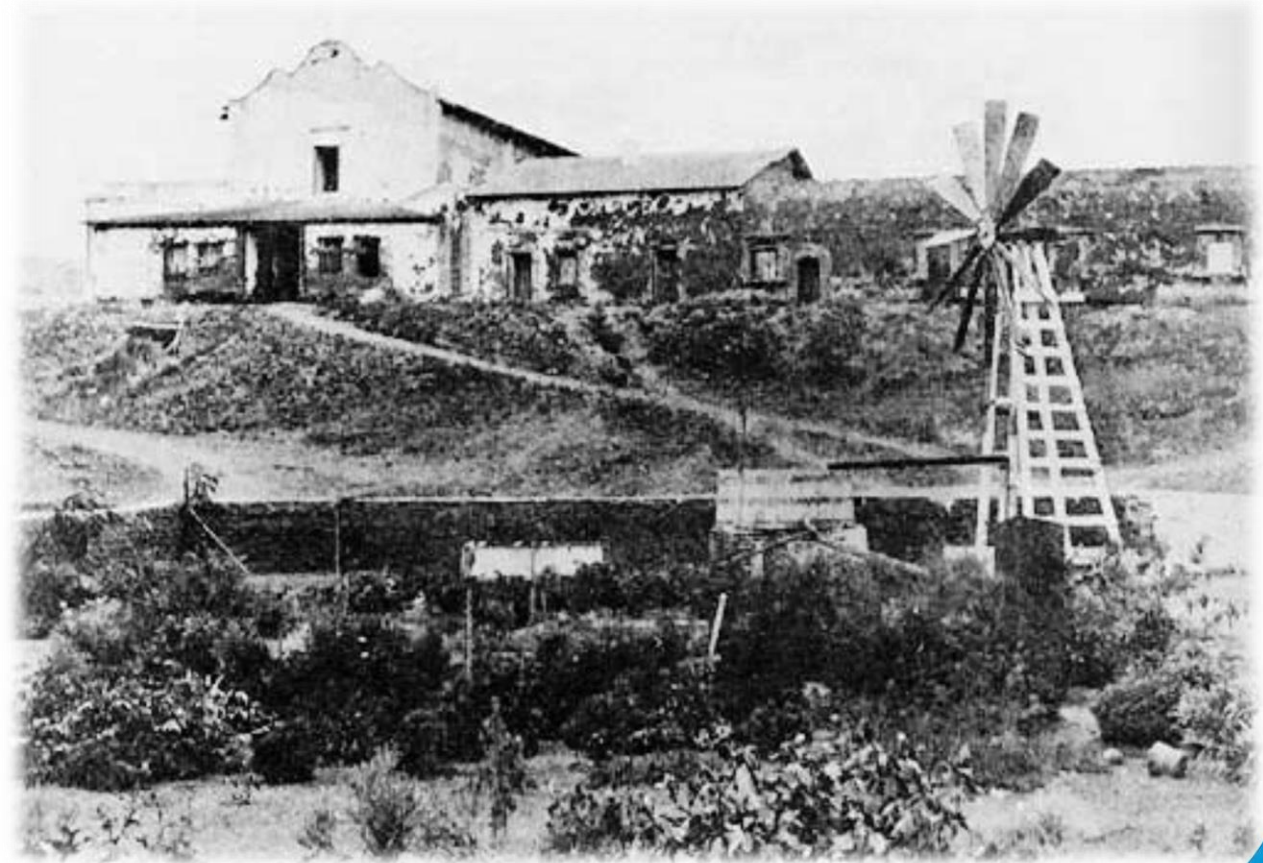
Cultural Resources Constraints Analysis, Historic Context, & Historic Preservation Section

January 24, 2019

Historical Resources Board

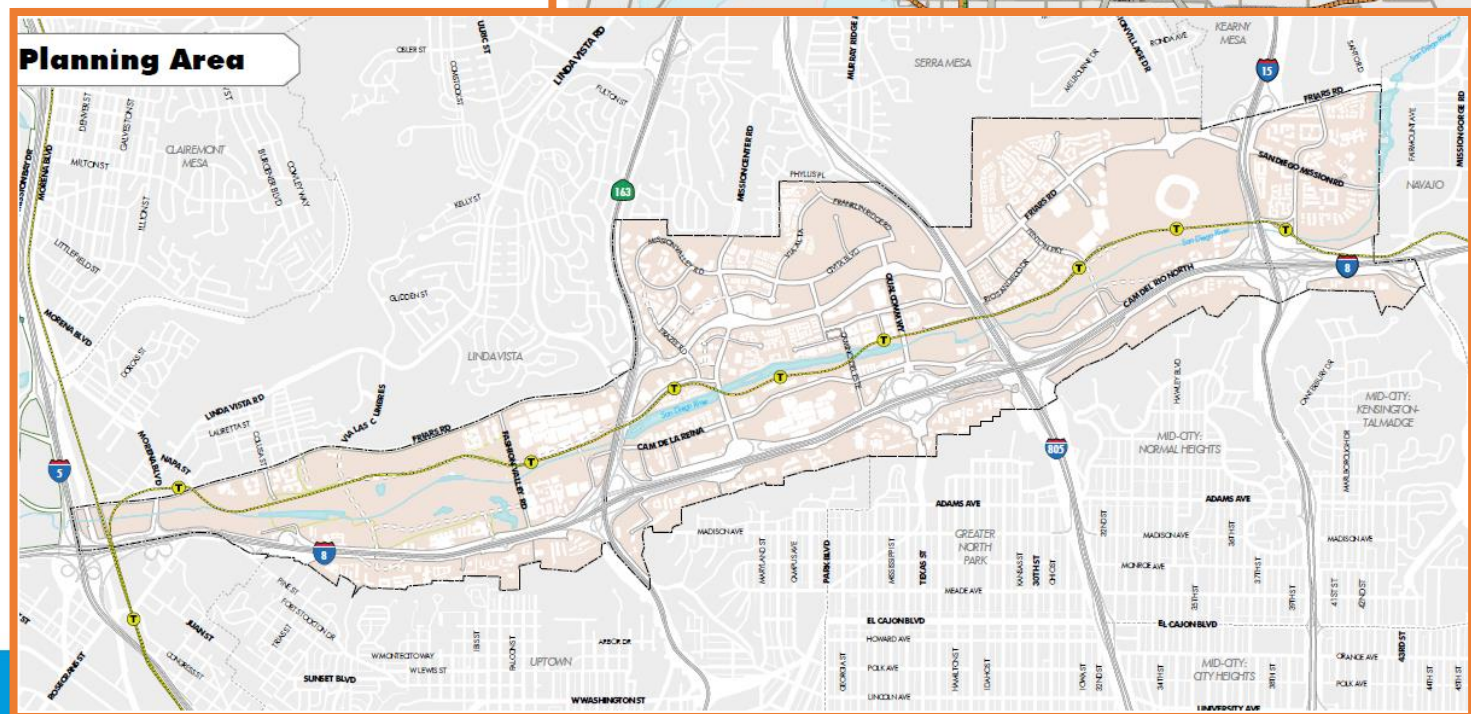
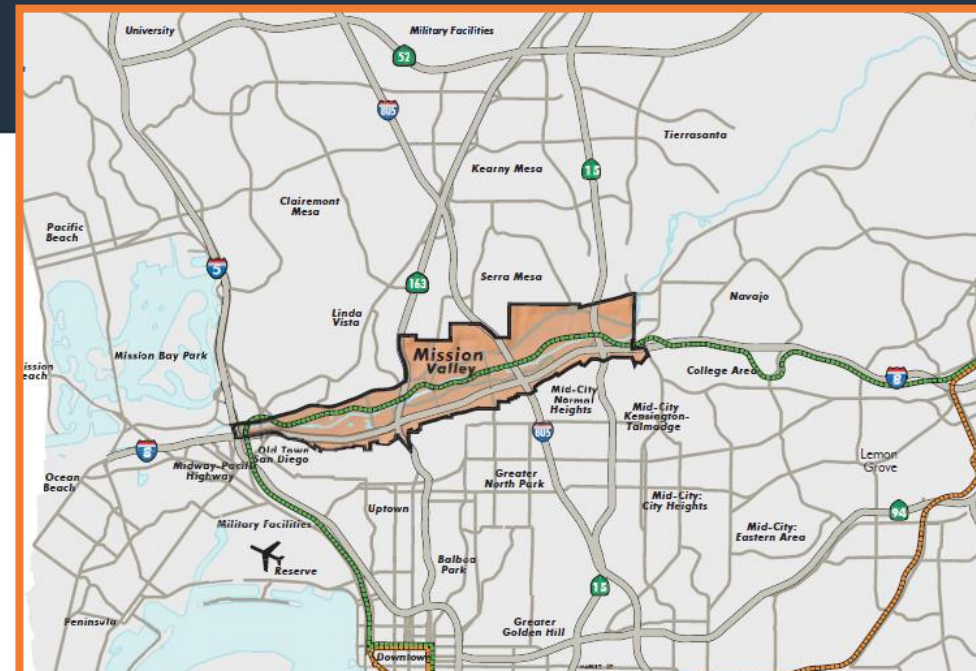
Presentation Overview

- Background
- Cultural Resources Constraints Analysis
- Historic Context Statement
- Historic Preservation Section
- Next Steps



Background

- Began in 2015
- Cultural Resources Constrains Analysis
 - Environmental & Cultural Setting
 - Cultural Sensitivity Analysis
- Historic Context Statement
 - Significant Themes
 - Associated Property Types
- Historic Preservation Section
 - Informed by Technical Studies and Outreach



Cultural Resources Constraints Analysis

Contents:

- Discussion of Environmental and Cultural Setting
- Defines Archaeological and Tribal Cultural Resources
- Summarizes Research and Outreach
- Analyzes Cultural Sensitivity Levels
- Provides Recommendations



Cultural Resources Constraints Analysis

- Mission Valley Inhabited by the Kumeyaay for Centuries Prior to European Arrival.
- Villages and Settlements Dotted the Valley Floor.
- Connected to the River as a Source of Fresh Water, Plants and Animal Life.
- Interstate 8/Kumeyaay Highway used by Kumeyaay as one of the Main Routes Linking the Mountains to the Coast.



Cultural Resources Constraints Analysis



Cultural Resources Constraints Analysis

Recommendations:

- Conduct extensive, non-intrusive investigations to better located potential undocumented burials that may exist within the community.
- Native American Monitoring During All Construction Related Ground-Disturbing Activities.
- Refer Significant Sites to HRB for Designation
- Native American Participation in All Phases of Investigations
- Further Evaluation and/or Monitoring of Developed Areas

Historic Context Statement

Periods and Themes Identified

- Spanish and Mexican Period (1769-1848)
 - Theme: Establishment of the Mission
- American Period (1848-1975)
 - Theme: Development of Natural Resources (1850-1968)
 - Theme: Modern Commercialization, Tourism and the Commercialization of the Valley (1940-1970)
 - Sub-Theme: Sports, Recreation & Leisure
 - Sub-Theme: Motels/Hotels
 - Sub-Theme: Commercial Regional Shopping Centers and Office Development
 - Sub-Theme: Residential Apartments

Historic Context Statement

Spanish and Mexican Period
(1769-1848)

THEME: Establishment of the Mission

- Mission Moved to the Valley in August of 1774 Due to Proximity to Water and Land for Cultivation.
- Extant Properties Limited to the Mission, which is Designated.



Historic Context Statement

American Period (1848-1975)

THEME: Development of Natural Resources (1850-1968)

- Initially Utilized for Dry Farming
- Dairies
- Sand & Gravel Mines



Historic Context Statement

American Period (1848-1975)

THEME: Modern Commercialization, Tourism and the Commercialization of the Valley (1940-1970)

- Sub-Theme: Recreation, Sports & Leisure
 - Equestrian
 - Golf
 - Bowling
 - Professional Sports Franchises



Historic Context Statement

American Period (1848-1975)

THEME: Modern Commercialization, Tourism and the Commercialization of the Valley (1940-1970)

- Sub-Theme: Hotels/Motels
 - First Zoning Variances for Development Obtained in the 1950s
 - Golf
 - Bowling
 - Professional Sports Franchises



Historic Context Statement

American Period (1848-1975)

THEME: Modern Commercialization, Tourism and the Commercialization of the Valley (1940-1970)

- Sub-Theme: Commercial and Regional Shopping Centers
 - Mission Valley Shopping Center Developed by May Company in 1958, Spurring Commercialization.



Historic Context Statement

American Period (1848-1975)

THEME: Modern Commercialization, Tourism and the Commercialization of the Valley (1940-1970)

- Sub-Theme: Residential Apartments
 - Briefly Started in Late 1960s
 - Later Development in the 1970s above the Mission Along Rancho Mission Road.



Historic Preservation Section

- Streamlining Community Plan Documents for Easier Use
- Historic Preservation Section
 - Overview of Cultural Resources Constraints Analysis and Historic Context
 - Policies to Protect Historical, Cultural and Tribal Cultural Resources.



Next Steps

- Program Environmental Impact Report (PEIR) will be Released in February
- Review by HRB Tentatively Scheduled for Spring 2019.
 - Recommendation on Historic Preservation Section, Cultural Resources Constraints Analysis, Historic Context Statement, and Environmental Mitigation Related to Impacts to Historical Resources.