



THE CITY OF SAN DIEGO
M E M O R A N D U M

DATE: August 16, 2016

TO: Planning Commission

FROM: Rebecca Malone, Environmental Planner, Planning Department

SUBJECT: Errata to the Final Program EIR for the San Ysidro Community Plan Update (SCH No. 2015111012, PTS No. 310690)

Subsequent to distribution of the Final Program Environmental Impact Report (FEIR) for the above referenced project and in response to comments received from the California Department of Fish and Wildlife (CDFW), Letter A-2 in the Response to Comments, the 7.32-acre United States Army Corps of Engineers (USACE) and CDFW conservation easement for wetland mitigation was added to Figures 5.6-5 and 5.6-6 in the Biological Resources Section (Section 5.6). The easement was also referenced in the Project Description (Chapter 3) and the Biological Resources Section (Section 5.6). The revised pages are attached, and this Errata has been uploaded to the Planning Department's CEQA Policy and Review webpage (<https://www.sandiego.gov/planning/programs/ceqa>).

These revisions do not affect the conclusions of the environmental analysis contained within the FEIR. Therefore, in accordance with Section 15088.5 of the California Environmental Quality Act (CEQA), recirculation of the EIR is not required.

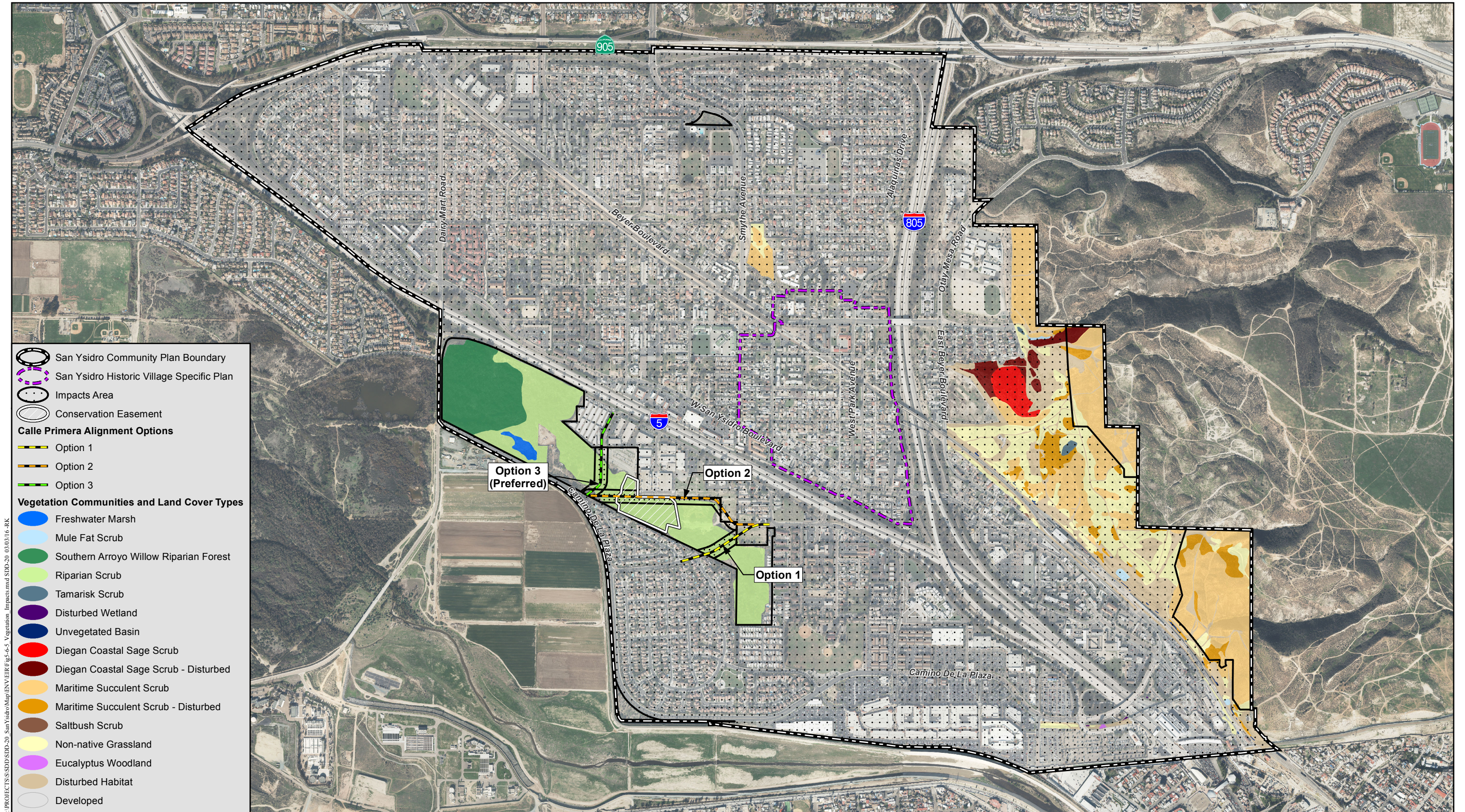
This Errata to the FEIR is being provided to Planning Commission and will be included in the record for consideration with adoption of the San Ysidro Community Plan Update and FEIR certification process.

A handwritten signature in blue ink that reads "Rebecca Malone".

Rebecca Malone, Environmental Planner

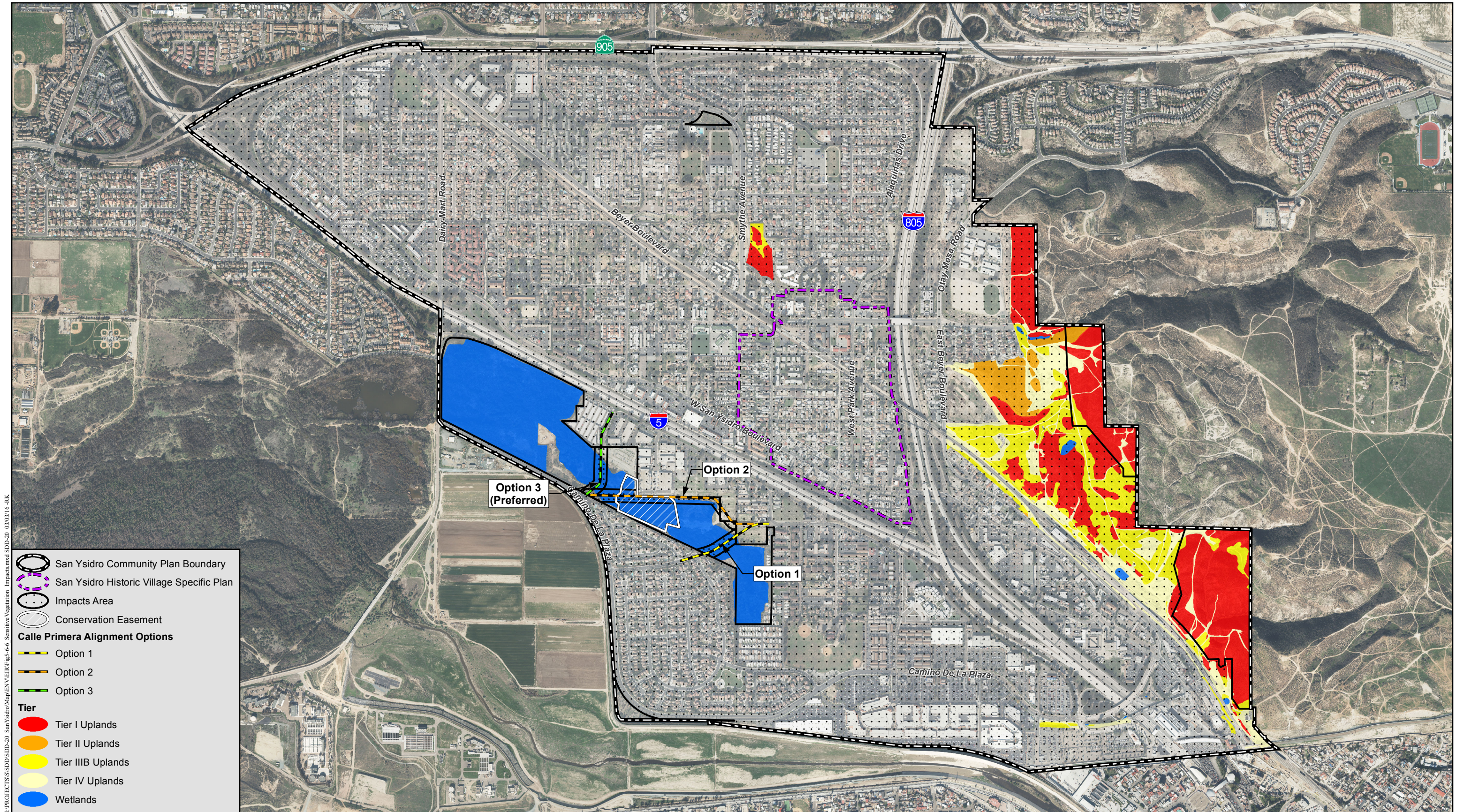
Attachments: Figures 5.6-5 and 5.6-6 (Biological Resources Section)
Pages 3-10 (Project Description) and 5.6-45 (Biological Resources Section)

cc: Project File



Impacts to Vegetation Communities and Land Cover Types

SAN YSIDRO COMMUNITY PLAN UPDATE



Impacts to Sensitive Vegetation Communities

SAN YSIDRO COMMUNITY PLAN UPDATE

Figure 5.6-6

**TABLE 3-3
PROPOSED ROADWAY CLASSIFICATION CHANGES
(continued)**

Roadway Segment	Adopted	Proposed
W. San Ysidro Blvd		
Sunset Lane to Averil Road	Modified 4 Lane Collector	2 Lane Collector (with TWLT)
Averil Road to Smythe Ave	Modified 4 Lane Collector	2 Lane Collector (with TWLT)
Smythe Ave to Cottonwood Road	2/3 Lane Major	2 Lane Collector (with TWLT)
Cottonwood Road to Via de San Ysidro	2/3 Lane Major	2 Lane Collector
E. San Ysidro Blvd		
I-805 NB Ramps to Border Village Road (west)	4 Lane Major	4 Lane Collector
Border Village Road (west) to Border Village Road (east)	4 Lane Major	2 Lane Collector
Border Village Road (east) to E. Beyer Blvd/Camino de la Plaza	4 Lane Major	5 Lane Major Arterial
Border Village Road		
San Ysidro Blvd to San Ysidro Blvd	4 Lane Major	2 Lane Collector
Willow Road		
Calle Primera to Camino de la Plaza	4 Lane Collector	2 Lane Collector

The Mobility Element also identifies a modified alignment for a proposed roadway connection included in the Adopted San Ysidro Community Plan (Adopted Plan), which would connect Calle Primera with Camino de la Plaza. The Mobility Element identifies a preferred alignment (Via Tercero) (Option 3) located to the northwest of the alignment shown on the Adopted Plan (Bibler Drive) (Option 1). The Mobility Element also identifies an intermediate alignment located between the preferred alignment and the adopted alignment (Option 2). The Option 2 segment is located within an existing 7.32-acre USACE and CDFW conservation easement for wetland mitigation. The three alignments are illustrated in Figure 3-4, *Calle Primera Alignment Options*.

Walkability

The Mobility Element includes a series of modifications to the existing roadways to promote walkability (see Figure 3-5, *Pedestrian Improvements*). In general, the improvements include improved pedestrian bridges, new or improved sidewalks, and traffic calming measures.

Bicycling

The locations of existing and planned bicycle facilities are illustrated in Figure 3-6, *Bicycle Facility Improvements*. Policies to encourage biking in the community include promoting the construction of bicycle facilities along key roadways and implementing bike share programs and providing bicycle storage facilities.

Goods Movement/Freight Circulation

The Mobility Element establishes policies aimed at accommodating the movement of commercial trucks through the community and minimizing disruption of residential areas. Specific policies focus on adopting a truck route to facilitate access to existing and future industrial/commercial areas and

The proposed extension of Calle Primera also has the potential to impact an existing wetland mitigation area established by the USACE and CDFW. This 7.32-acre conservation easement is located in riparian scrub habitat. As shown in Figure 5.6-5 and 5.6-6, the Calle Primera Option 2 segment would be located within the conservation easement. The Option 1 and preferred Option 3 segment would lie outside the conservation easement and, thus, would avoid impacts to the easement. Additional environmental review would be conducted at the time the extension is proposed to identify actions to reduce impacts, and determine mitigation measures required to avoid or reduce impacts to sensitive biological resources, if approved by the regulatory agencies.

b. Significance of Impacts

According to the City's Significance Determination Thresholds, potential impacts to these sensitive habitats/communities would be significant because they are to lands containing Tier I, II, and IIIB habitats and wetlands, and some of the impacts are in the MHPA.

c. Mitigation Framework

Implementation of the following mitigation measure would reduce impacts on sensitive habitats/communities.

BIO-10: Wetland Habitats: Wherever feasible, wetland impacts shall be avoided. If avoidance is infeasible, wetland impacts shall be mitigated to achieve no net loss of wetland function and value. Mitigation for wetland vegetation community impacts usually entails a combination of habitat acquisition/preservation, restoration, and/or creation. Typical mitigation ratios, as defined in the City's Biology Guidelines, are identified in Tables 5.6-9a and 5.6-9b, *City of San Diego Wetland Mitigation Ratios (with Biologically Superior Design)* and *City of San Diego Wetland Mitigation Ratios (without Biologically Superior Design Outside of the Coastal Zone)*, respectively.

TABLE 5.6-9a
CITY OF SAN DIEGO WETLAND MITIGATION RATIOS
(with Biologically Superior Design*)

On-Site Habitat Types	Vegetation Community	Mitigation Ratio
Mule fat scrub, Riparian scrub, Tamarisk scrub	Riparian	2:1 to 3:1
Unvegetated basin†	Vernal pool	2:1 to 4:1
Unvegetated basin†	Unvegetated basin with fairy shrimp	2:1 to 4:1

* A Biologically Superior Design includes avoidance, minimization, and compensatory measures, which would result in a net gain in overall function and values of the type of wetland resource over the resources being impacted.

† Unvegetated basin might qualify as either vernal pool, unvegetated basin with fairy shrimp, or neither, depending on which species are found there.