

P-15 Howard Avenue Pocket Park - Development

DIF-basis: \$425,000

Up to the amount identified above as the P-15 DIF-basis, DIF revenue may provide funding for design and construction of a pocket park, approximately 0.30 usable acres, which may include passive recreation amenities, seating, pathways, and landscaping. The project site is proposed to be at Howard Avenue and 32nd Street within the Caltrans rights-of-way. The project requires a lease agreement with Caltrans or acquisition of the land, which is not included in the cost estimate.



Google Maps: Howard Avenue at 32nd Street

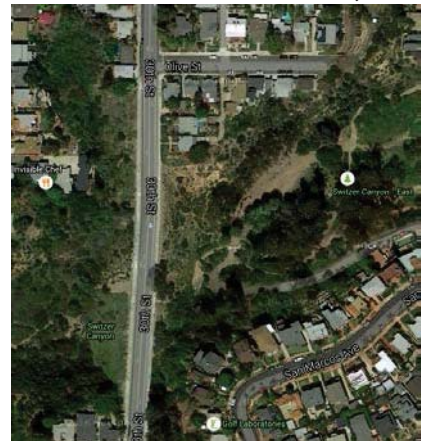
CIP: TBD

Total Project Cost Estimate: \$425,000

P-16 Switzer Canyon and 30th Street Pocket Park - Development

DIF-basis: \$425,000

Up to the amount identified above as the P-16 DIF-basis, DIF revenue may provide funding for design and construction of a pocket park, approximately 0.16 usable acres, which may include seating, walkways, and interpretive signs. The project site is located on City-owned open space at 30th Street within Switzer Canyon.



Google Maps: Switzer Canyon at 30th Street

CIP: TBD

Total Project Cost Estimate: \$425,000

P-17 Open Space and Trails

DIF-basis: \$1,144,000

Up to the amount identified above as the P-17 DIF-basis, DIF revenue may provide funding for eligible improvements to canyon open space and trails, including new kiosks, overlooks, interpretive signs, benches, protective fencing, trash receptacles, and native landscaping. Facilities may include, but are not limited to, the parks projects listed below:

- Juniper Street and 34th Street Canyon Open Space Trails –Expansion
Design and construction of approximately 1,100 linear feet of new trail and trail amenities along the 6,600 linear feet of existing multi-use trails for a trail of approximately 7,700 linear feet in total. Trail amenities may include trail upgrades, trailheads, interpretive signs, protective fencing, overlooks, and native landscaping where needed and appropriate for the trail type as determined and approved by the City.





Google Maps: Juniper Canyon

The trail project connects the Juniper Street Crossing of Juniper Canyon to the south terminus of the existing Juniper Street trail.

CIP: TBD

Cost Estimate: \$603,000

- Switzer Canyon Open Space Trail – Expansion**
 Design and construction of approximately 1,100 linear feet of new multi-use trail and trail amenities along the existing multi-use trail (5,400 linear feet) for a trail of approximately 6,500 linear feet in total. Trail amenities may include trail upgrades, trailheads, interpretive signs, protective fencing, overlooks, and native landscaping where needed and appropriate for the trail type as determined and approved by the City. The trail project connects the southern terminus of 28th Street to the southwest corner of Redwood Avenue and 32nd Street.



Google Maps: Switzer Canyon

CIP: TBD

Cost Estimate: \$541,000

Total P-17 Project Cost Estimate: \$1,144,000

P-18 Joint-Use Facilities - Development

DIF-basis: \$0

Up to the amount identified above as the P-18 DIF-basis, DIF revenue may provide funding for design and construction of joint-use facilities, which may include multi-purpose, turf fields, walkways, fencing, and landscape as needed at the following locations:

- McKinley Elementary School**
 Approximately 2.52 acres and requires a joint-use agreement with the San Diego Unified School District and the City of San Diego.

The funding, \$2,640,000, for this facility is from the school district and is not included in the DIF-basis.

CIP: S-12001

Cost Estimate: \$2,640,000



Google Maps: McKinley Elementary School

