

Mira Mesa Community Plan Update: Mobility

Planning Department

April 15, 2019

6:10 pm to 7:00 pm – Mira Mesa Library



Planning Department –Outline

1. Community Plan Update/Recap

2. Mobility

- Role in the CPU Process
- Overview of mobility constraints and opportunities

3. Engagement Results

4. Existing Conditions Assessment

5. Draft Goals

1. Discussion & Next Steps

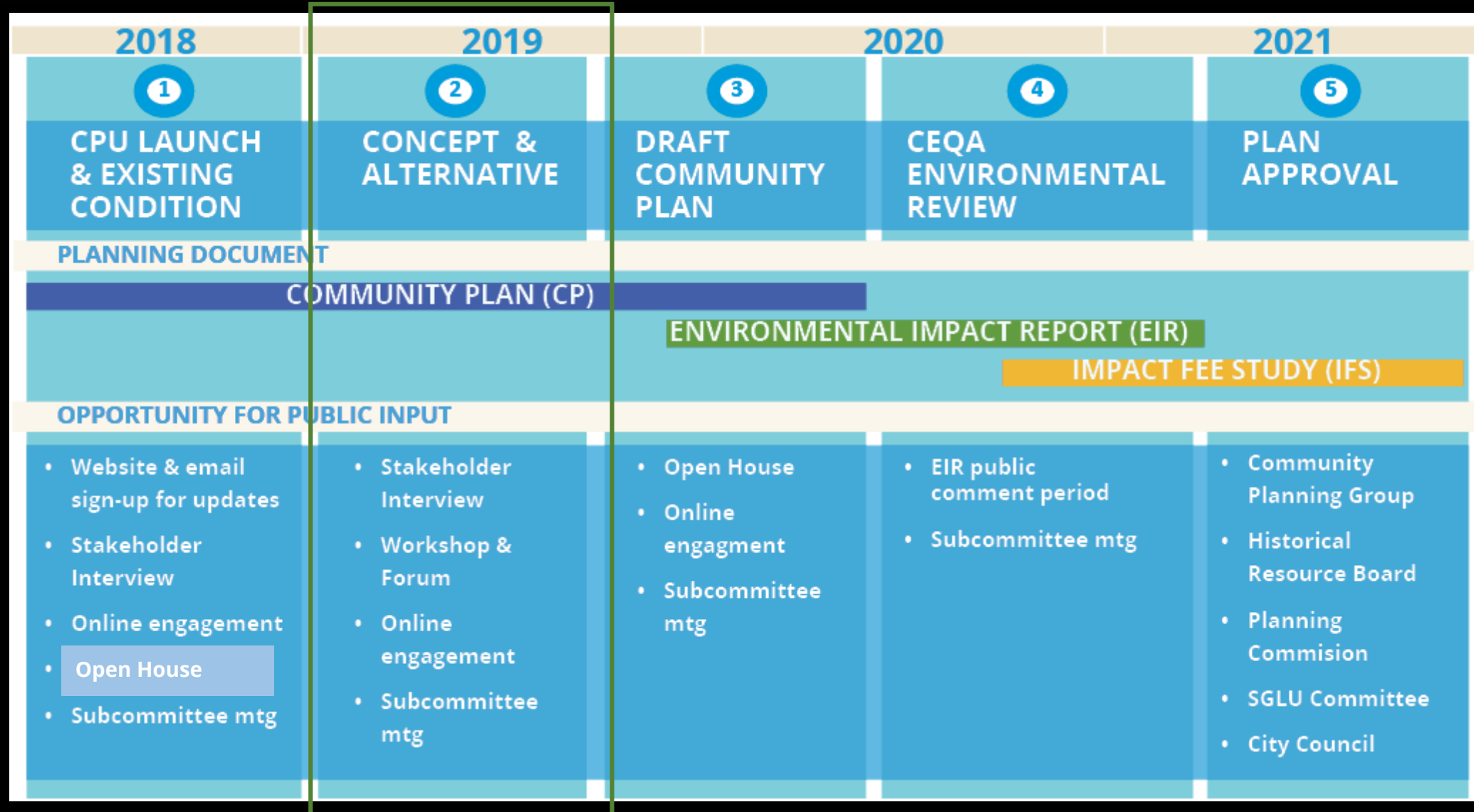


Community Plan Update Schedule





Process and Timeline



Nov. 2018



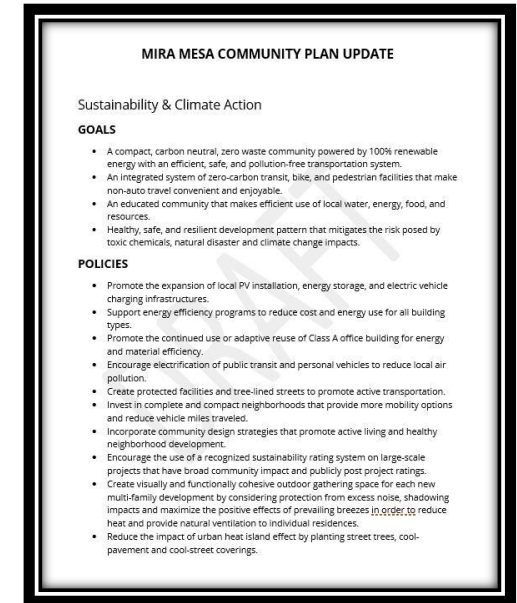
Community Atlas: Existing Conditions Report

Jan. 2019



Phase I Community Engagement Report

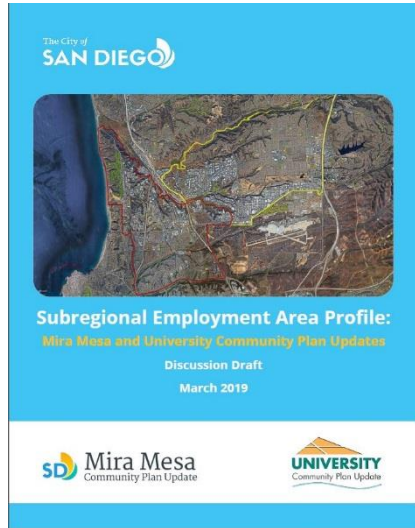
Oct/Nov(18)/Feb 2019



Draft Goals & Policies

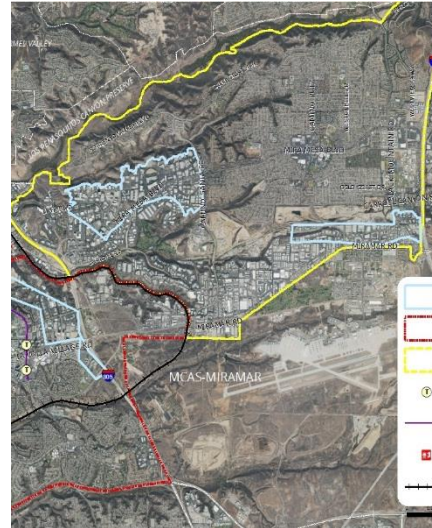
- Sustainability & Climate Action
- Conservation & Open Space
- Public Facilities
- Parks & Recreation

April



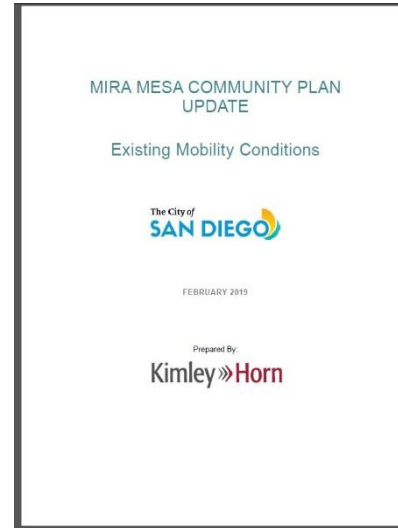
Subregional Employment Area Profile

May



Collocation Study

- Sorrento Mesa
- Miramar



Mobility Existing Conditions Report

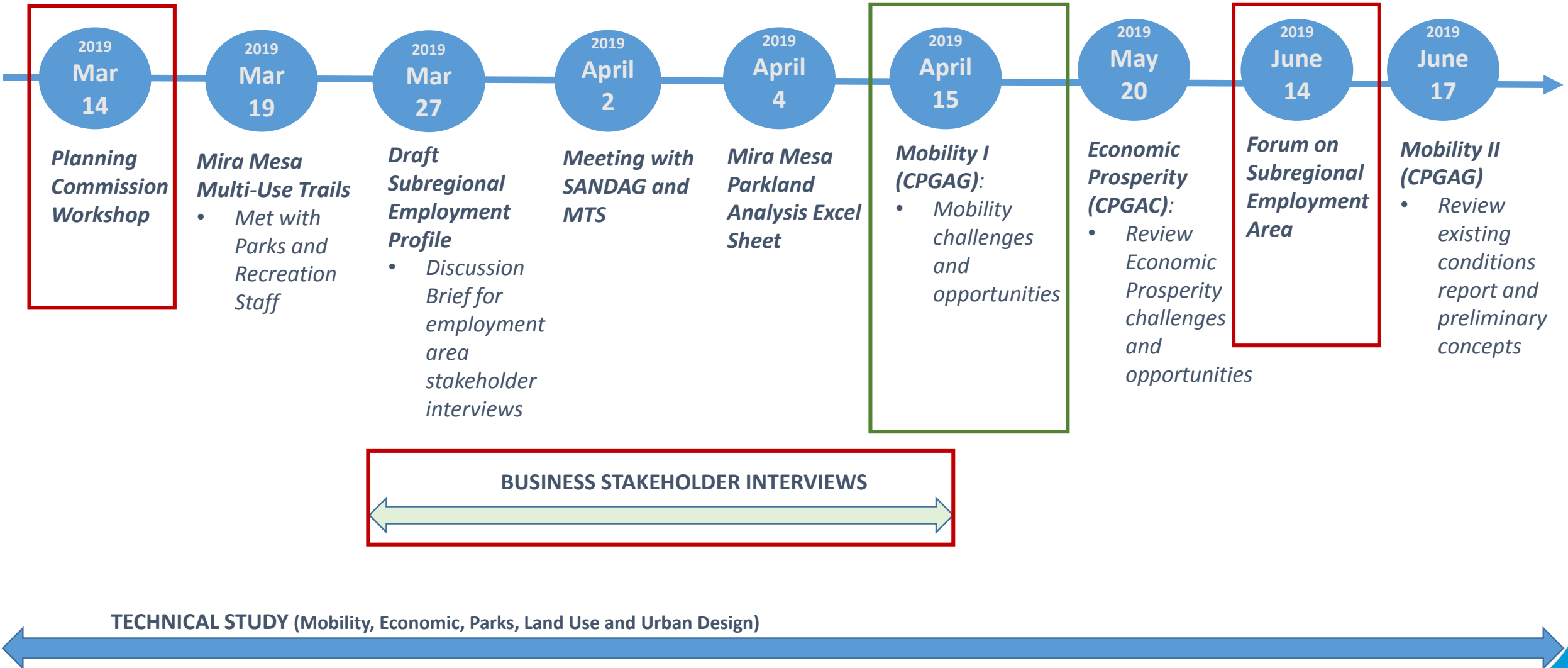
June

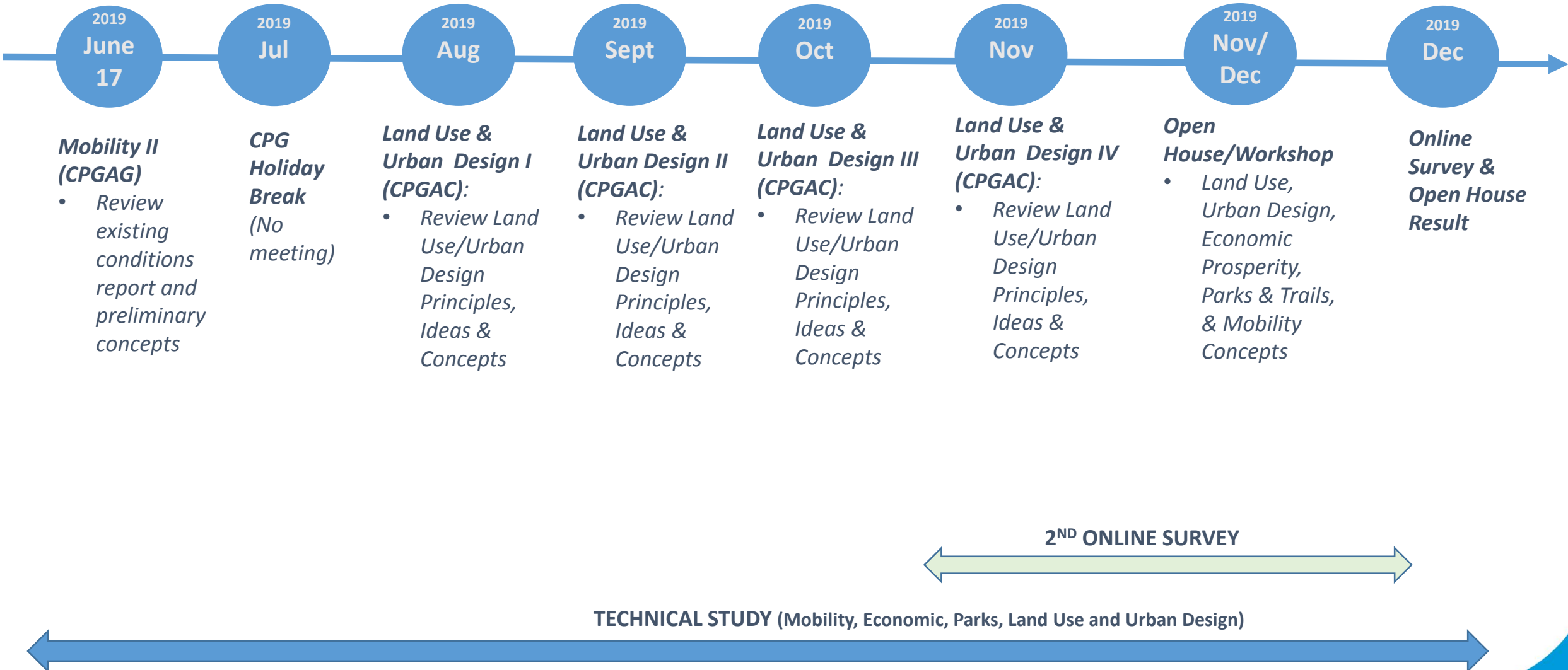


Market Demand Forecast



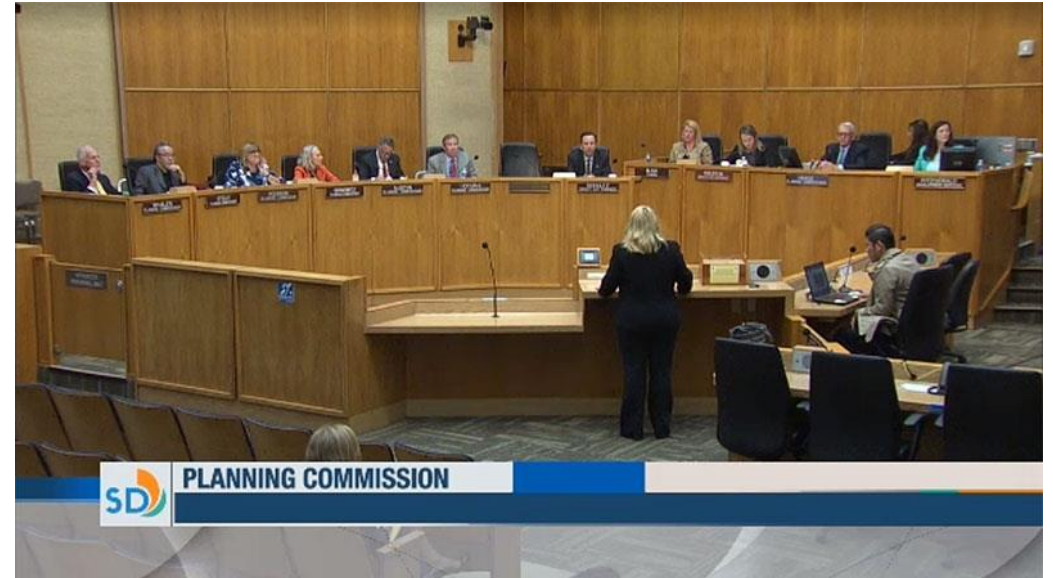
Stakeholder Interview Summary





March 14, 2019

- Provided an overview of Mira Mesa CPU Phase I:
 - Existing conditions & community priorities
- Received early input from Planning Commissioners
- PC Report and presentation available @ www.PlanMiraMesa.org



illumina®

Hines

SOUTHWEST
STRATEGIES

cleantech
SAN DIEGO

BIOCOM

HOLOGIC®
The Science of Sure

IRVINE COMPANY
Since 1864

Qualcomm

NAIOP
COMMERCIAL REAL ESTATE
DEVELOPMENT ASSOCIATION

MTS
Metropolitan Transit Sys

TECHSAN DIEGO

Sd
San Diego
Regional
Chamber



CLIMATE ACTION
C A M P A I G N

KILROY

SANDAG



SAN DIEGO STATE
UNIVERSITY

SAN DIEGO
REGIONAL
EDC



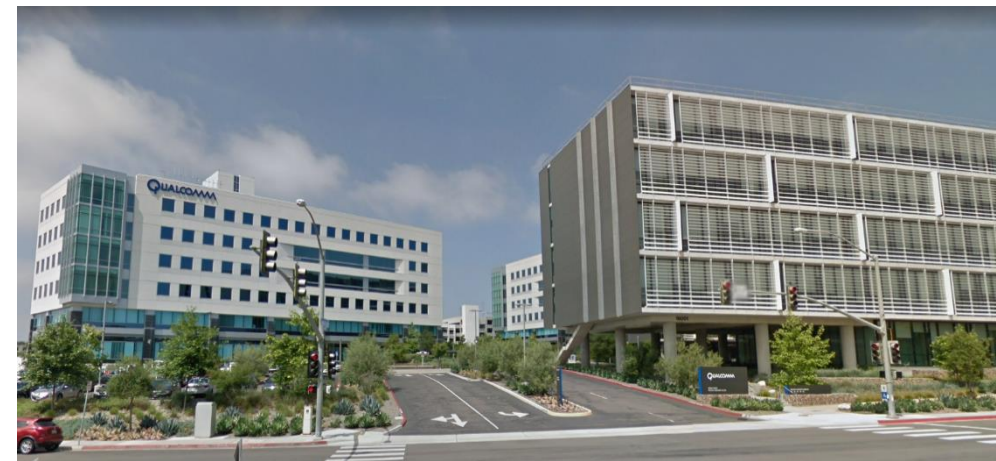
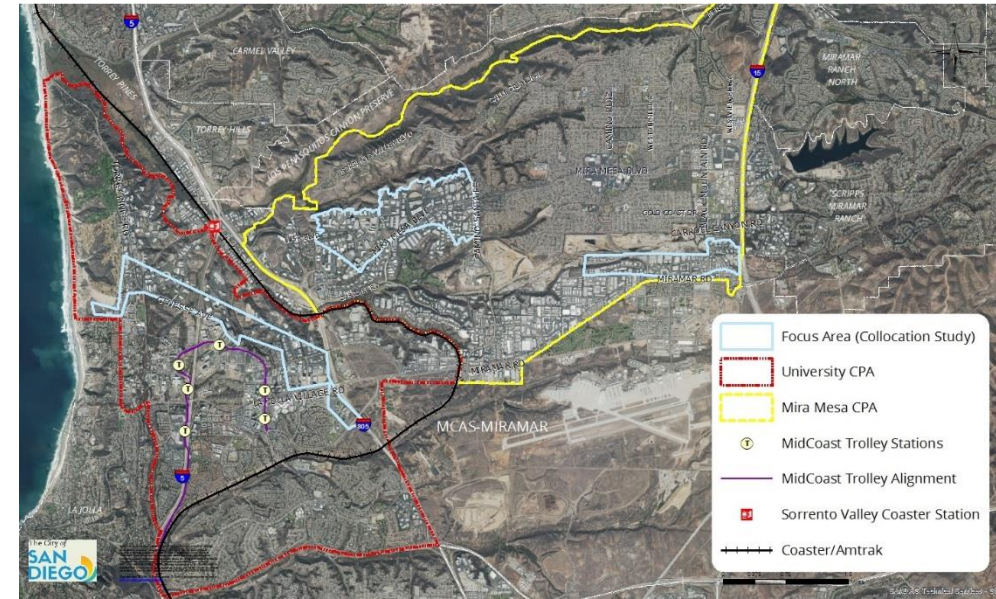
ALEXANDRIA®

HAMMER
VENTURES

ULI Urban Land
Institute San Diego-
Tijuana

Friday, June 14, 2019

- Joint initiative between University and Mira Mesa CPUs
- Convene business associations, large employers, major property owners, developers, and community members
- Present result of technical studies, stakeholder interviews, and market demand forecast
- 8:30 am to 12:00 noon at Qualcomm conference facility



Mobility Planning

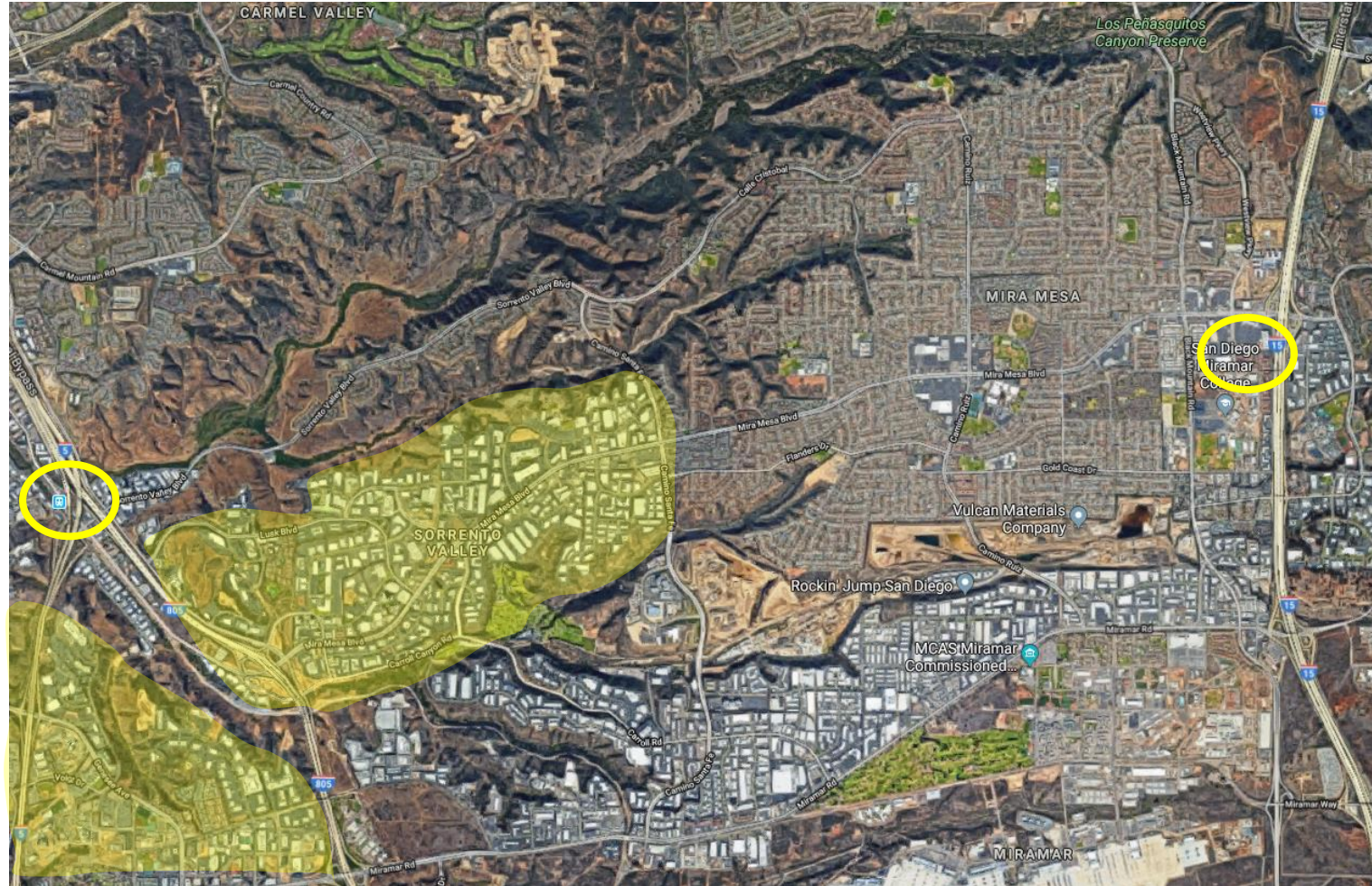
“Improve mobility through development of a balanced, multimodal transportation network”

Mobility Element



Overview of Mobility Opportunities and Constraints

- Auto-centric
- Regional Employment on the west
- Residences on the east
- Sorrento Valley Coaster Station
- Miramar College Transit Center
- Congestion



- Convert Short Trips to walk/bike trips



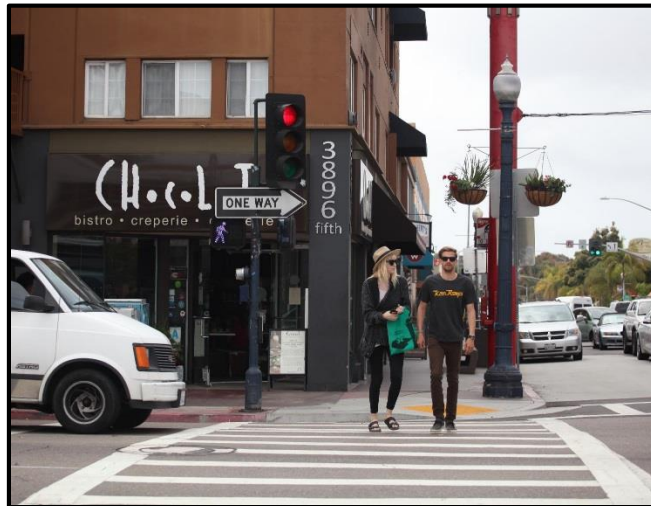
Pedestrian
Countdown



Pedestrian Refuge



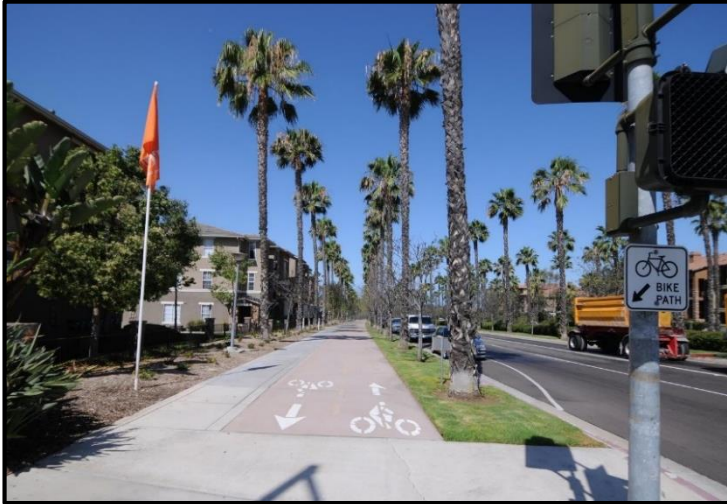
Curb Extension / Bulb-outs



Leading Pedestrian Interval



Pedestrian Hybrid Beacon



Class I – Multi-Use Path



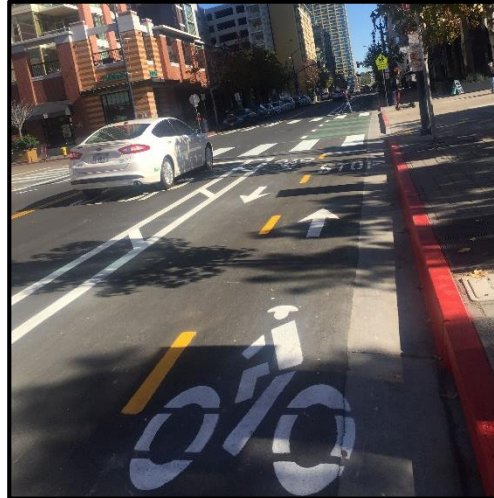
Class II – Bike Lane



Class III – Bike Route

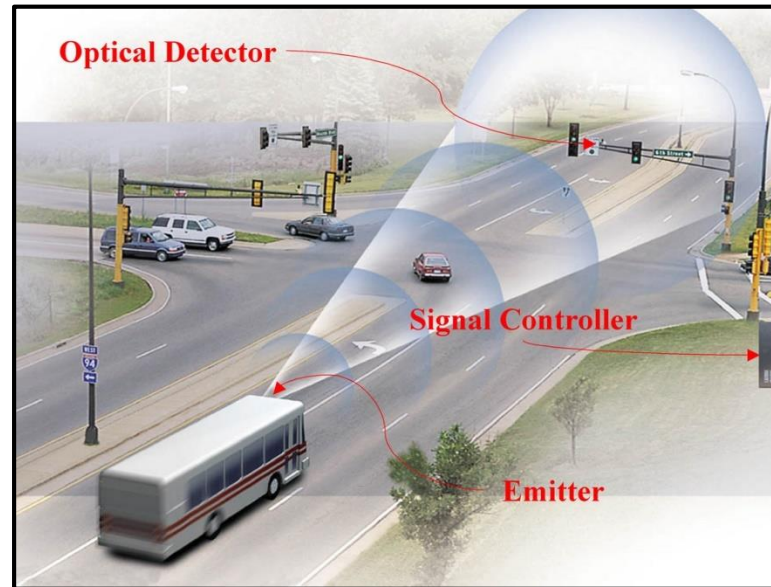


Class IV – Cycle Track



Class IV – 2 Way Cycle Track

- Facilitate and encourage transit use
 - Transit Priority Treatments
 - Access to Transit Stops (First Mile-Last Mile Connections)
 - Improving Transit Stop Amenities

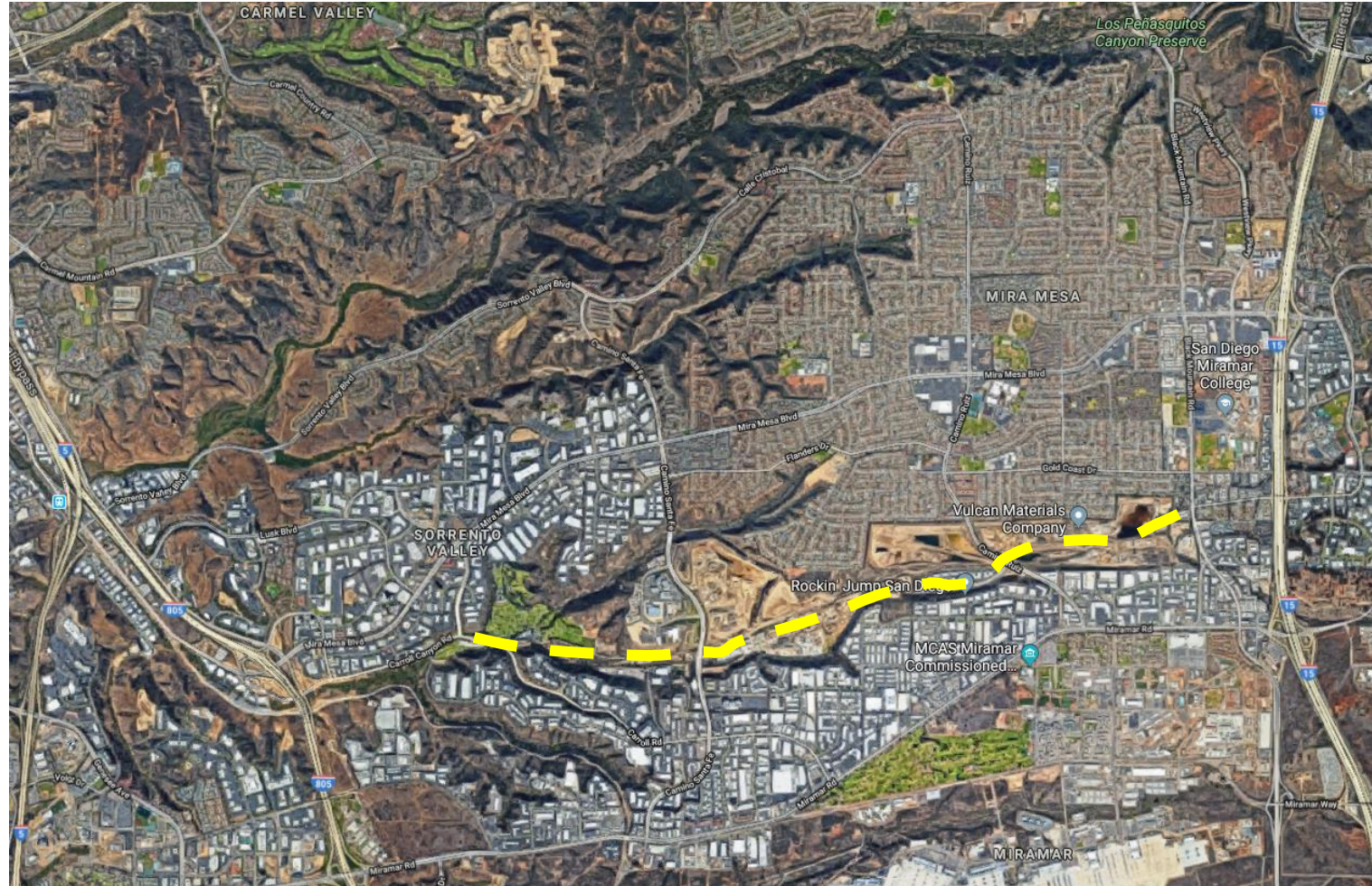


Transit Priority Signals

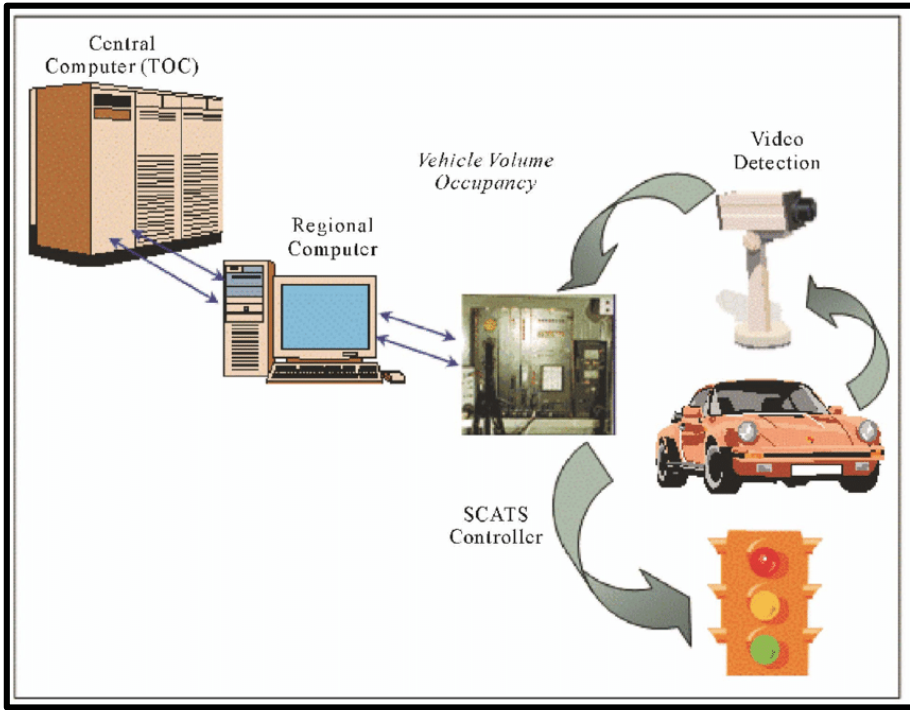


Quality Transit Amenities

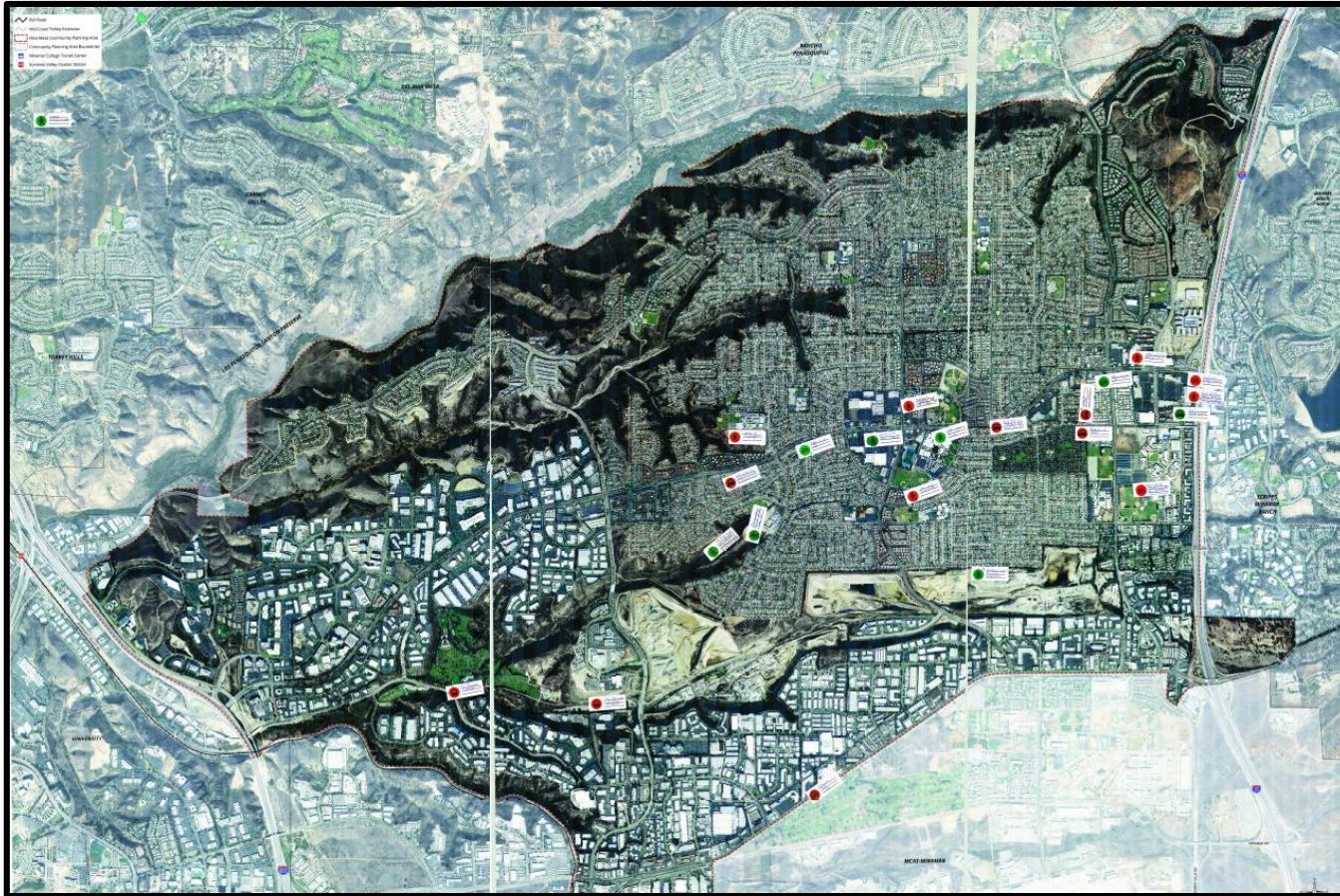
- Carroll Canyon Road Extension
 - Dedicated area for transit
 - Additional East-West corridor



- Emerging Technologies



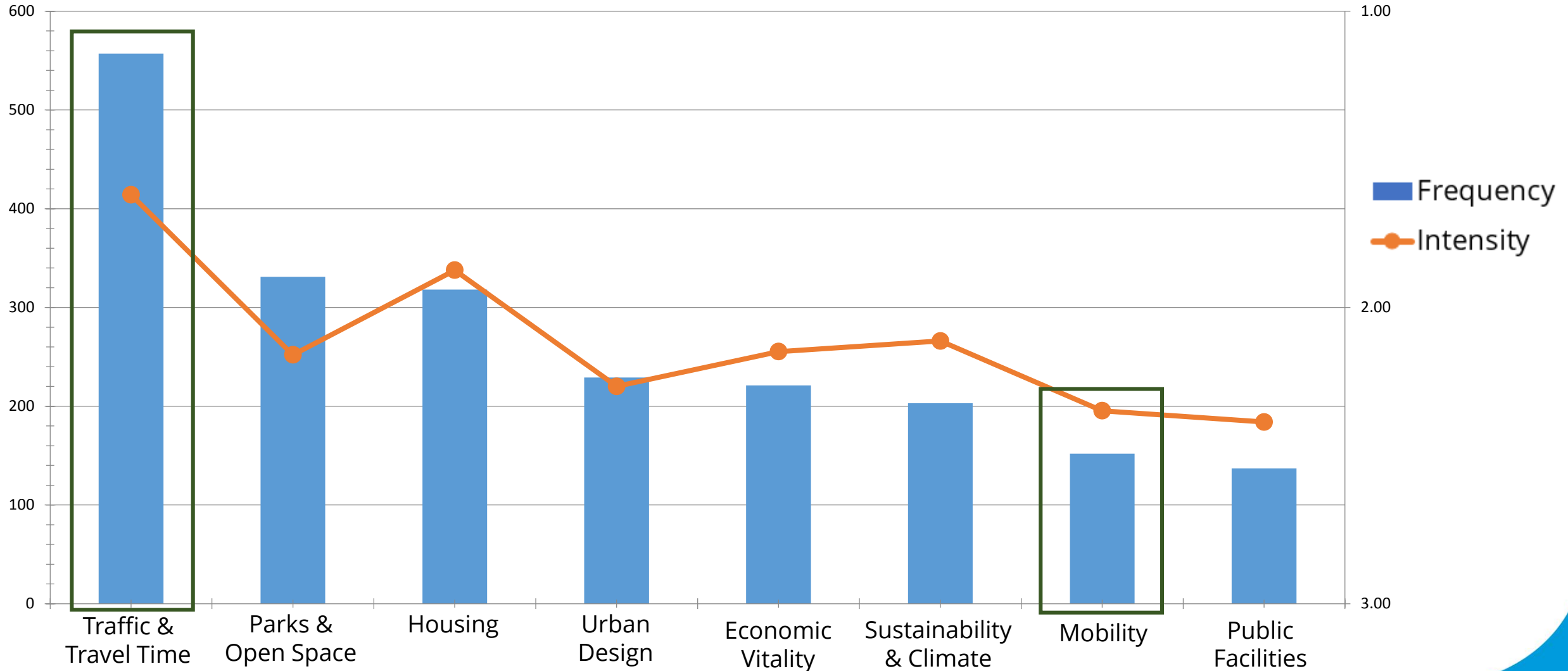
Community Engagement



23 Comments

- Carroll Canyon Road extension
- Safe Routes to School
- Safer Crossings
- Better Pedestrian Access
- Addressing Gaps in Bicycle Network

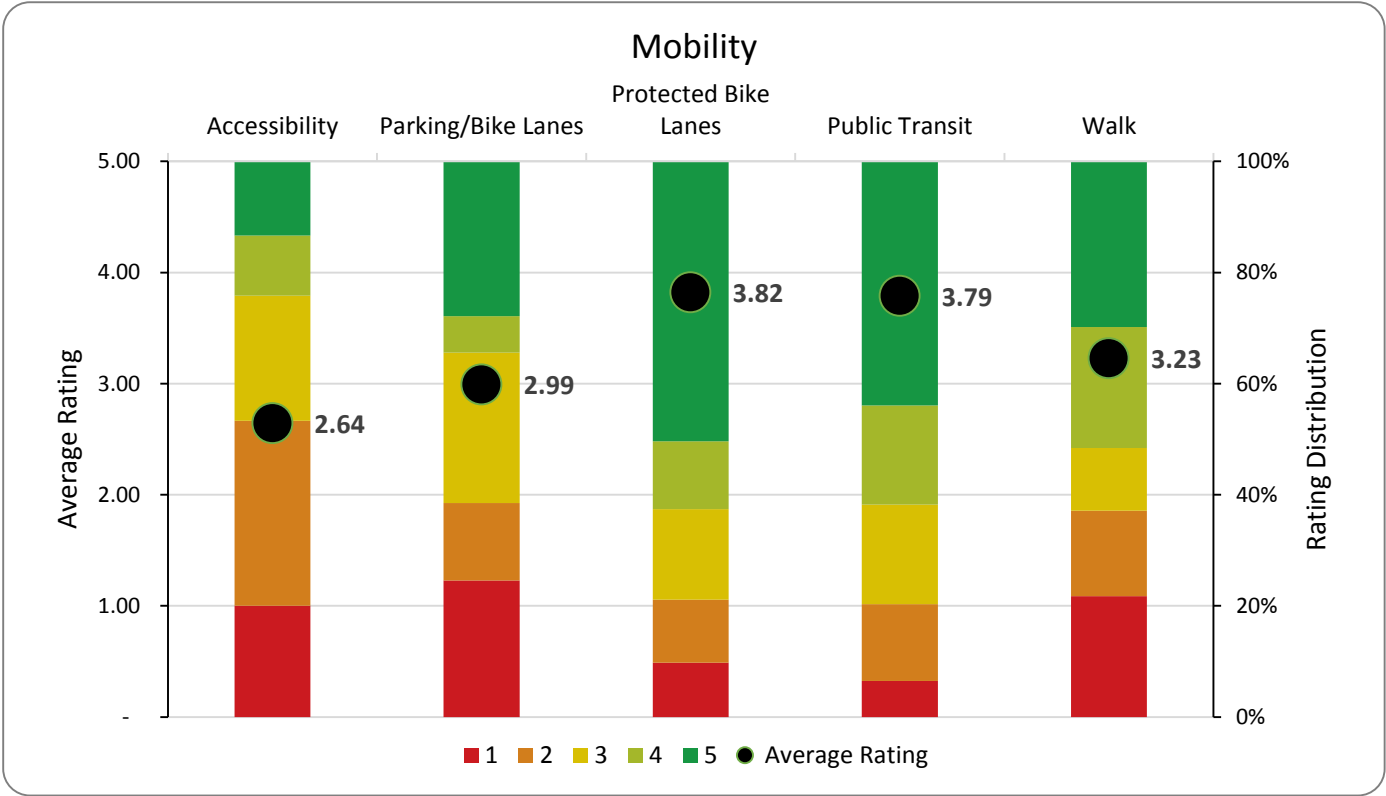
Online Survey All Rankings Bar Chart



MOBILITY

Speaks to the multiple ways one can travel throughout the community. The community’s transportation system is key to moving people throughout the area and connecting people from residences to schools, employment and commercial centers.

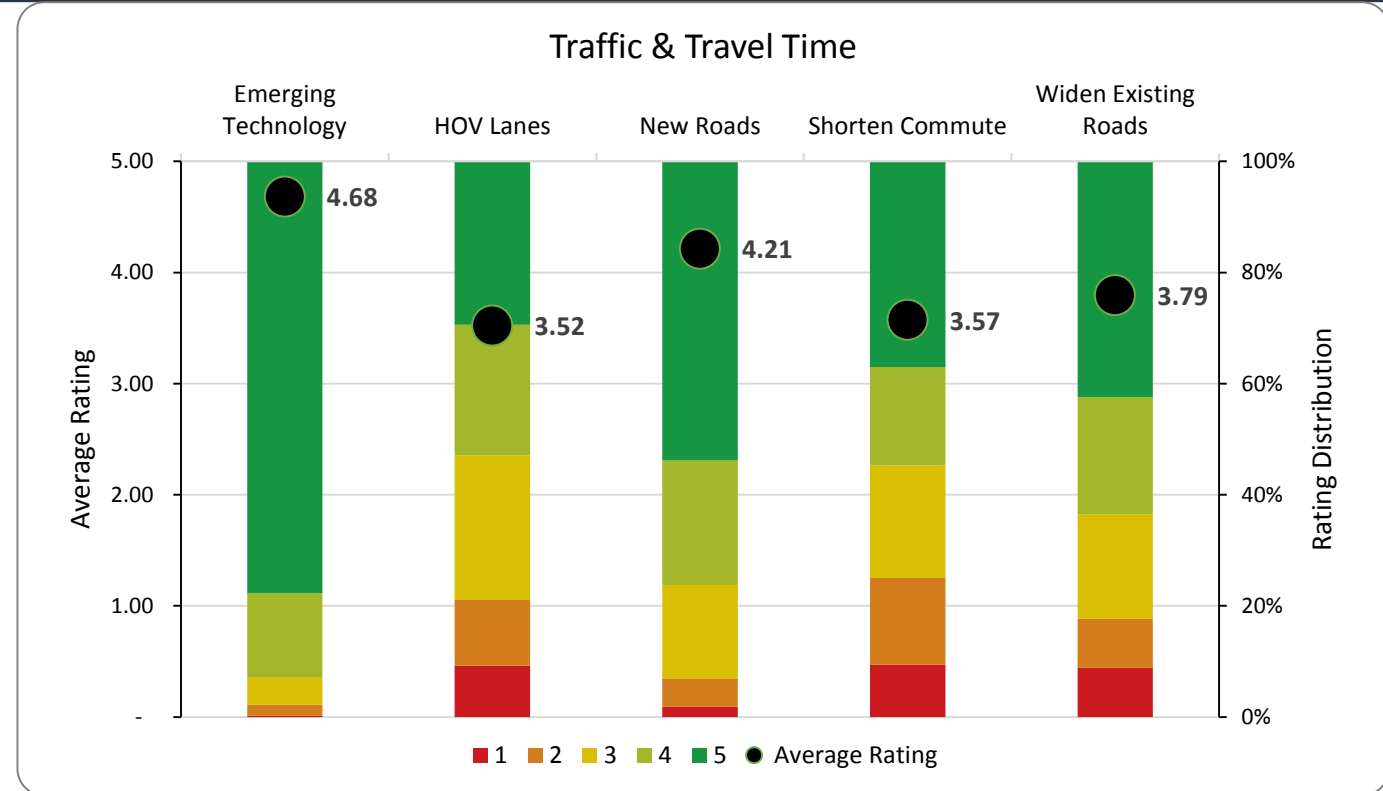
Item	Description
Accessibility	Mira Mesa is easily accessible by biking, walking, or transit.
Parking/Bike Lanes	I prefer to have enhanced bike facilities instead of street parking.
Protected Bike Lanes	Add protected bike lanes, whenever feasible.
Public Transit	Focus on building dedicated transit lanes or HOV lanes for faster travel.
Walk	I frequently walk in my neighborhood/work location.



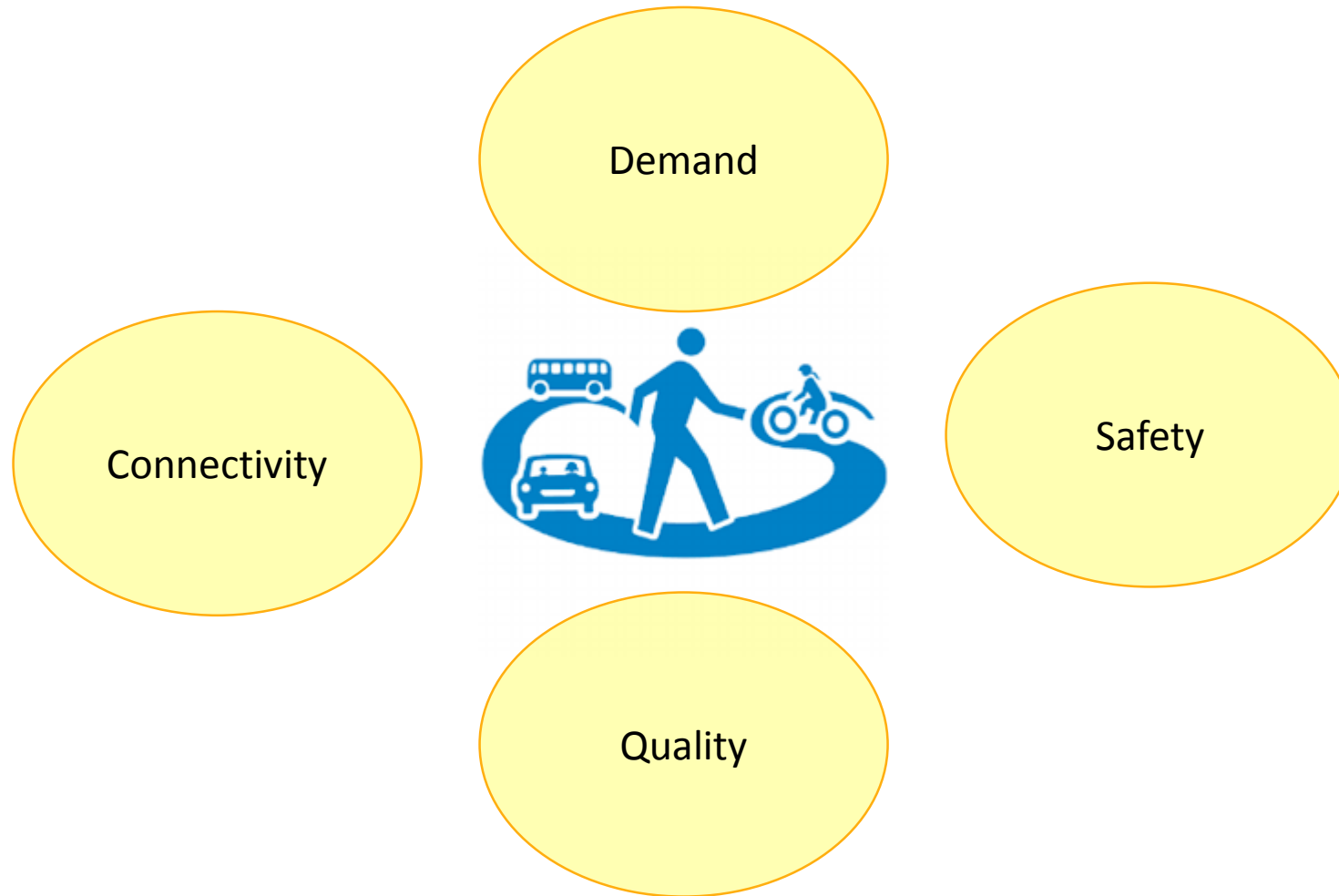
MOBILITY

Speaks to the many ways traffic and travel time can be addressed.

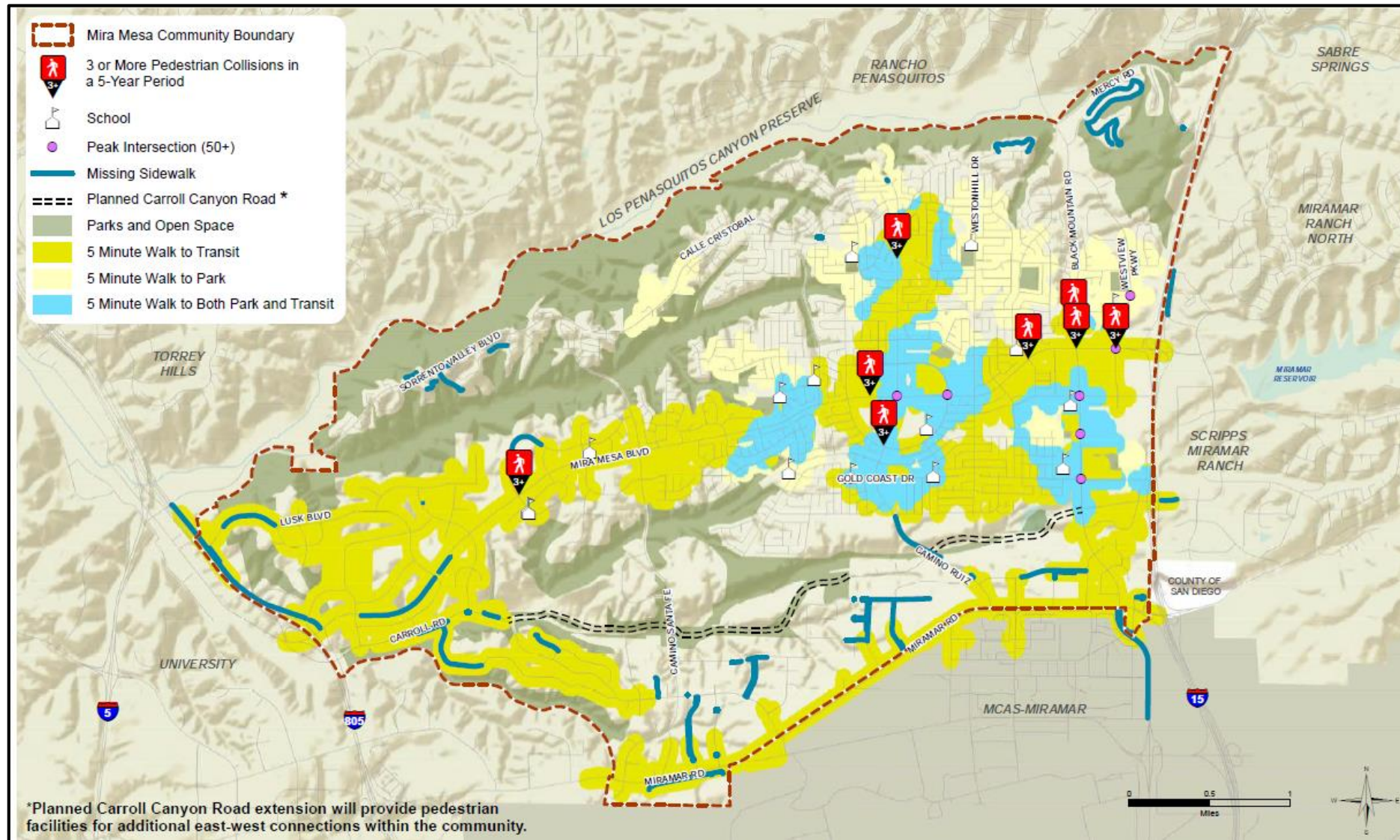
Item	Description
Emerging Technology	Use technology to synchronize traffic signals and improve traffic flow.
HOV Lanes	Carpool lanes have improved traffic and travel times.
New Roads	Complete Carroll Canyon Road from I-15 to I-805.
Shorten Commute	Allow new housing near job centers to reduce commuter traffic.
Widen Existing Roads	Focus on widening existing roads to accommodate more cars and higher speeds.

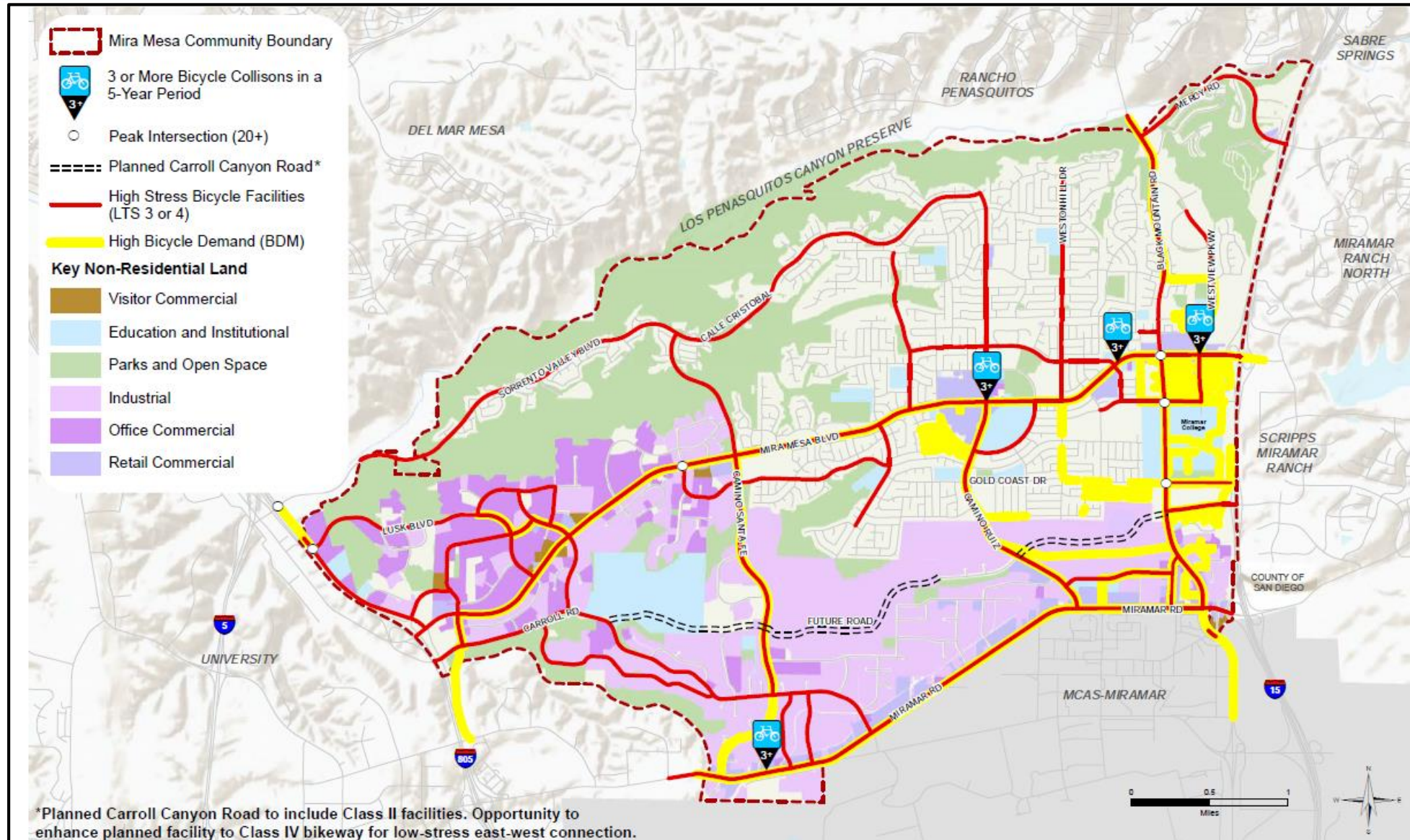


Existing Conditions Report

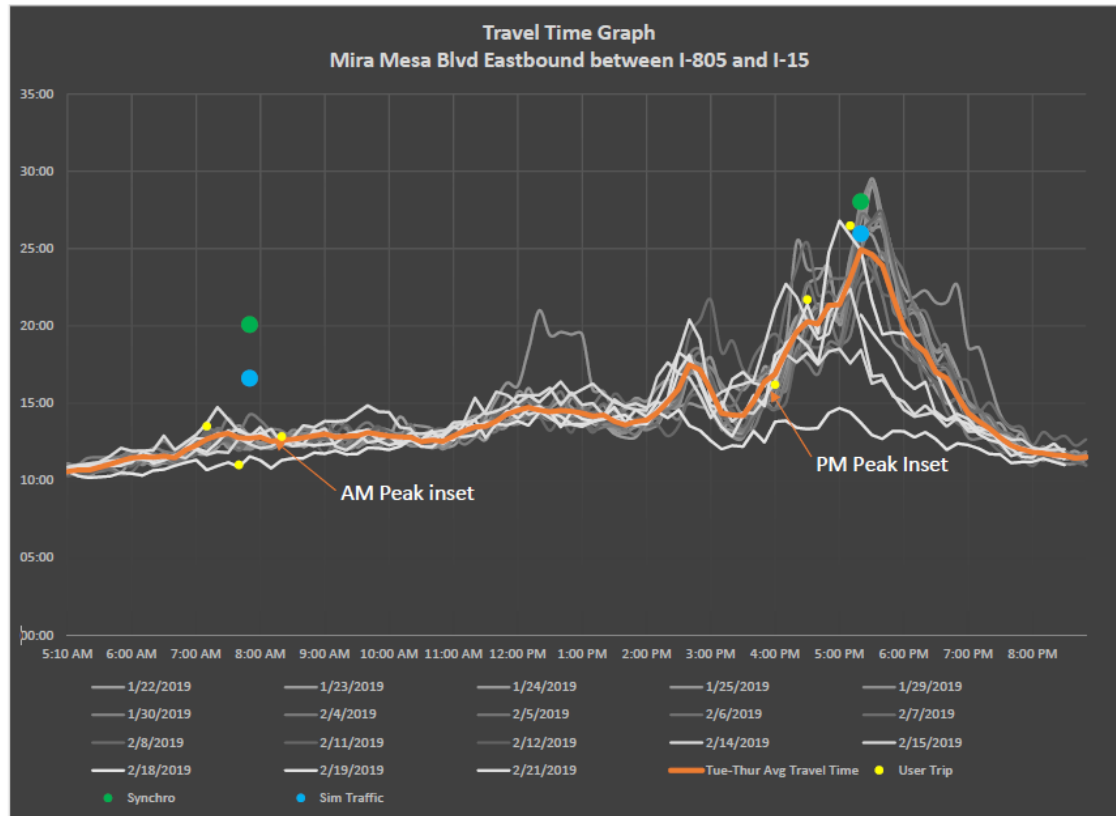


- Counts
- Propensity Models
- Collisions (5 years)
- On-the-ground assessments





Mira Mesa Boulevard (Eastbound)



Existing Conditions Report

- ✓ Analysis of Bicycle, Pedestrian and Transit Modes
- Analysis of Vehicular mode
 - Parking utilization analysis
 - Freeway segment and ramps analysis

Anticipated completion for DRAFT Mid to Late-May 2019



Goals & Policies of General Plan

To improve mobility through development of a balanced, multi-modal transportation network.

A complete, functional, and interconnected pedestrian network, that is accessible to pedestrians of all abilities.

A street and freeway system that balances the needs of multiple users of the public right-of-way.

An interconnected street system that provides multiple linkages within and between communities.

A safe transportation system

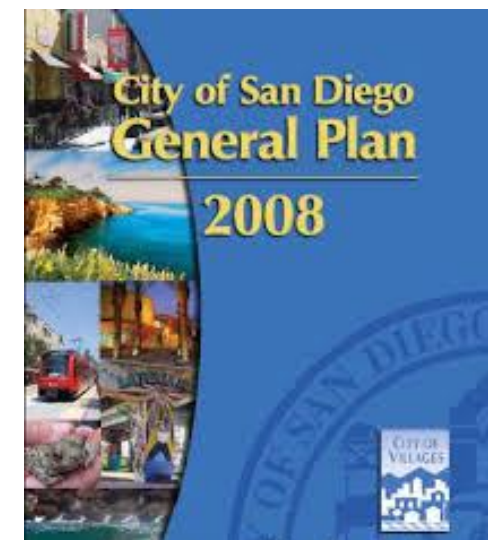
Reduced single-occupant vehicle traffic on congested streets and freeways.

Improved performance and efficiency of the street and freeway system, by means other than roadway widening or construction.

Expanded travel options and improved personal mobility.

EXISTING TRANSPORTATION GOALS

- An efficient and environmentally sensitive transportation system
- A transportation system that provides convenient linkages to the community's activity centers and to the rest of the metropolitan region
- A transportation system that maximizes the opportunities for transit use
- A system of bikeways and pedestrian facilities that will encourage bicycling and walking as means of transportation



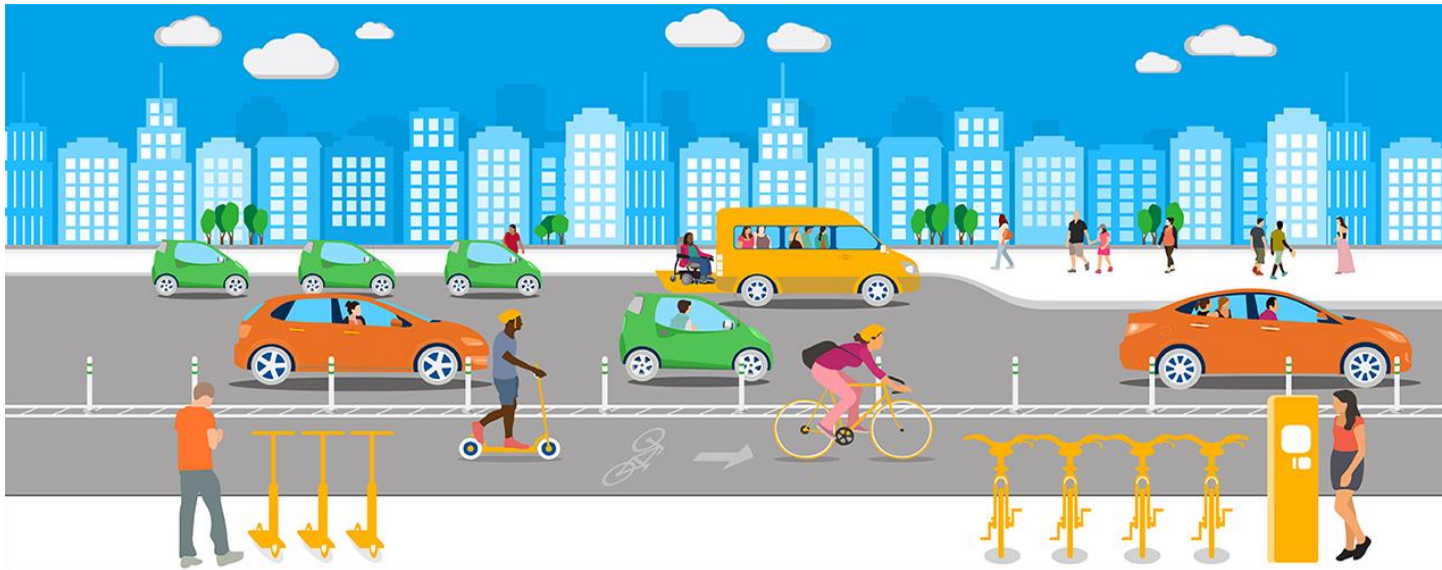
A balanced multimodal transportation network

- expands personal mobility and travel options



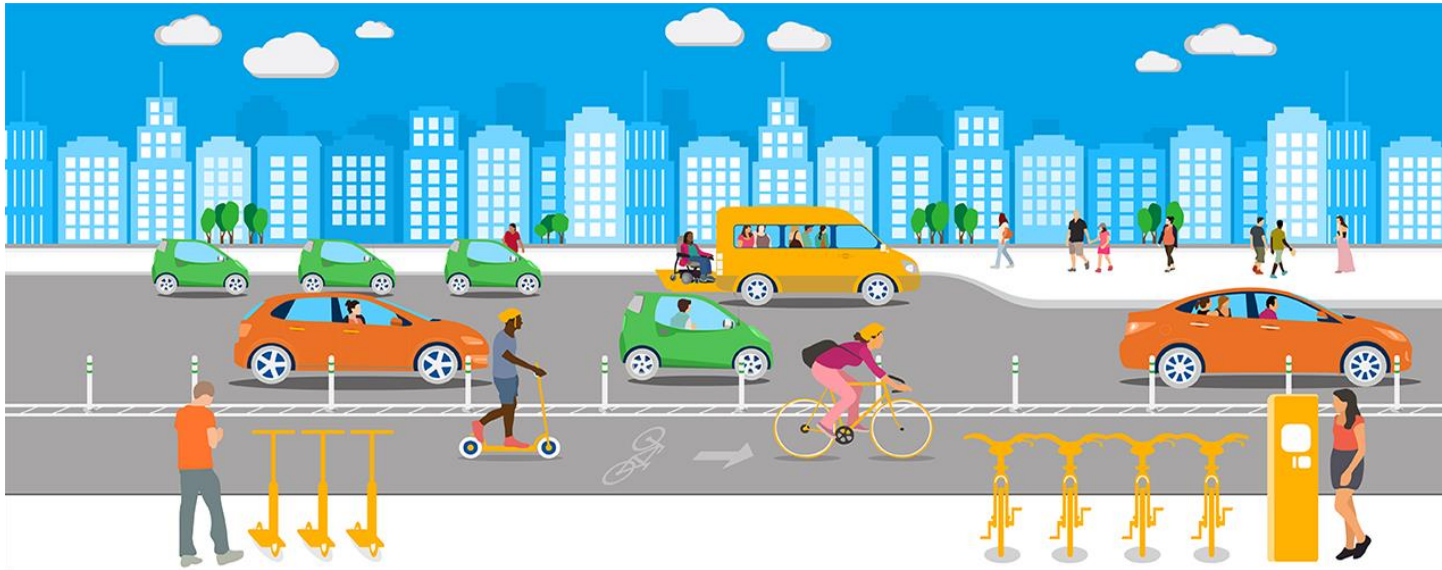
First-mile and last-mile connections to transit

- Walking, cycling, dockless vehicles



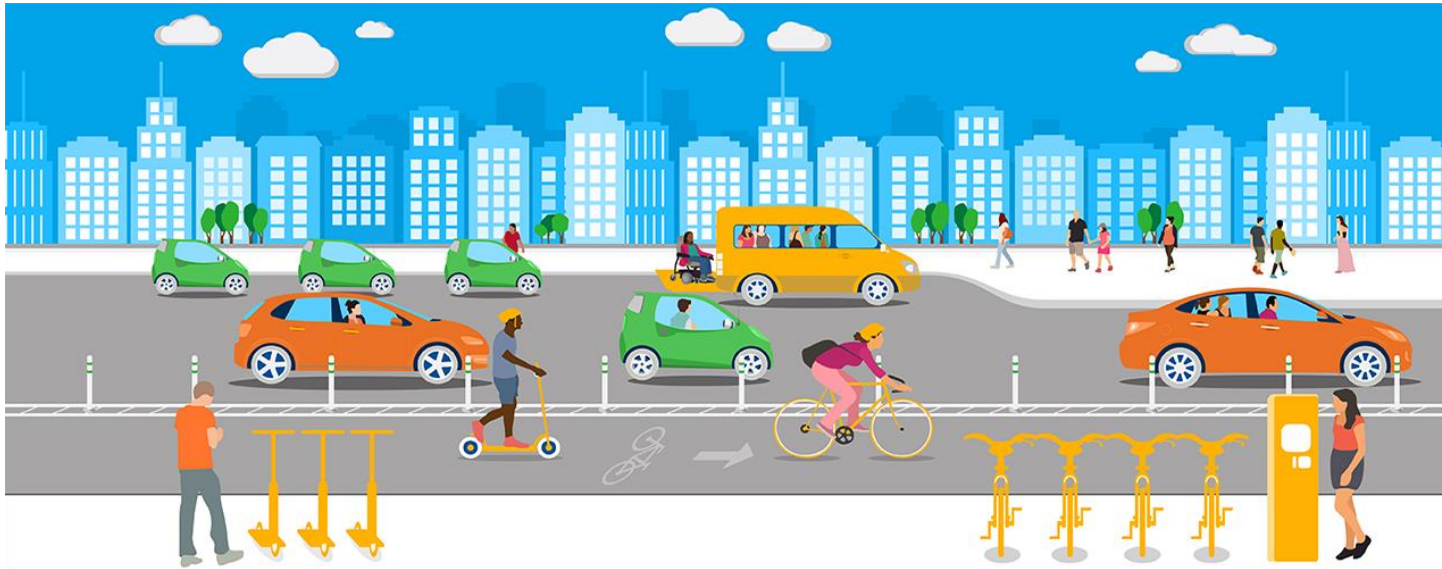
Interconnected street system

- linkages to activity centers
- Layered approach of identifying modal priorities throughout the community



Smart infrastructure

- emerging technologies
- improve mobility options
- Efficient system



For more information please visit:

www.PlanMiraMesa.org

Mira Mesa Community Plan Update: **Mobility**

Planning Department

April, 2019

6:10 pm to 7:00 pm – Mira Mesa Library

Multimodal Planning Toolbox