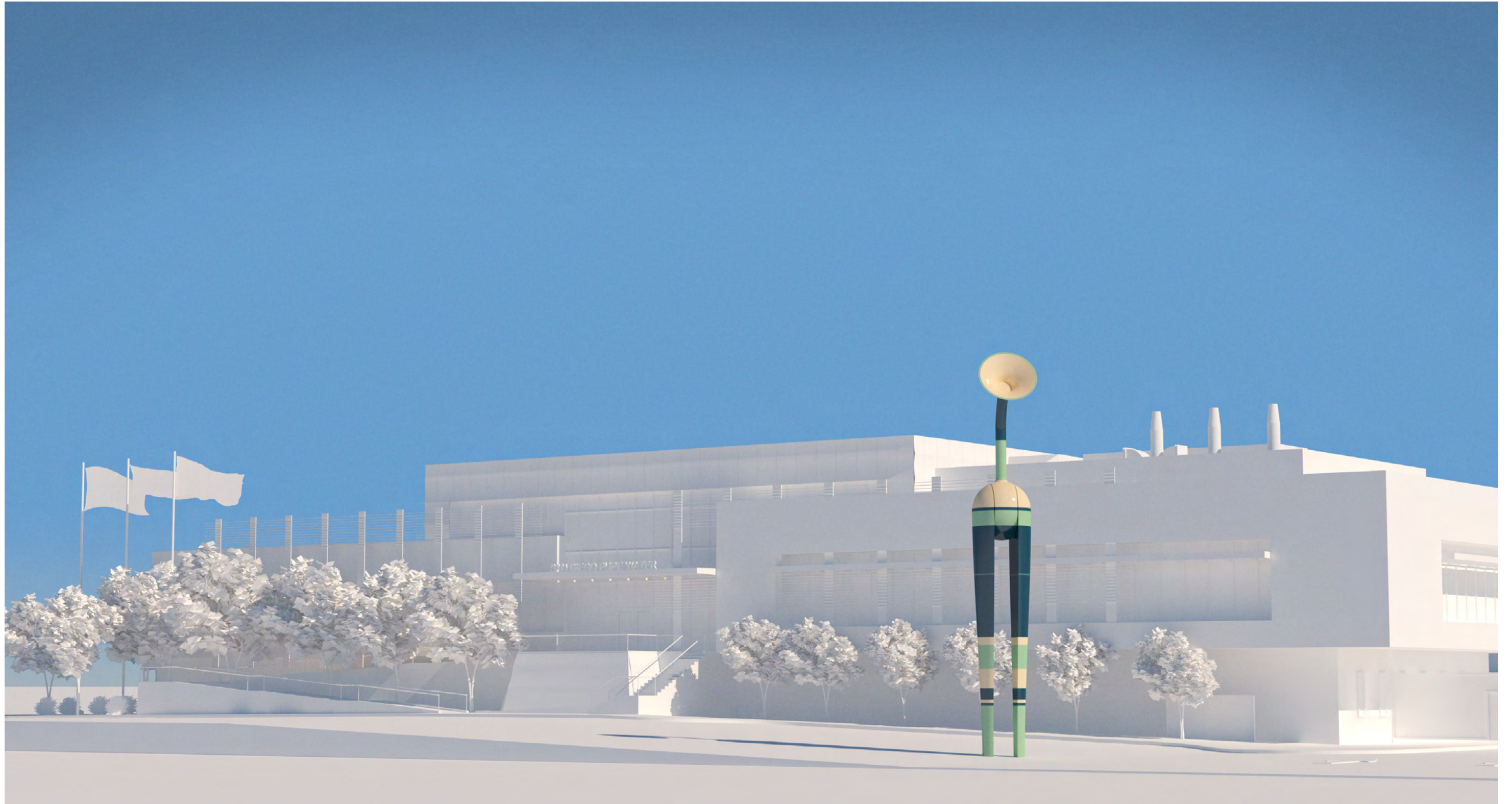


Art Work for the North City Pure Water Facility in San Diego

Final Artwork Proposal

Title: DAPHNE

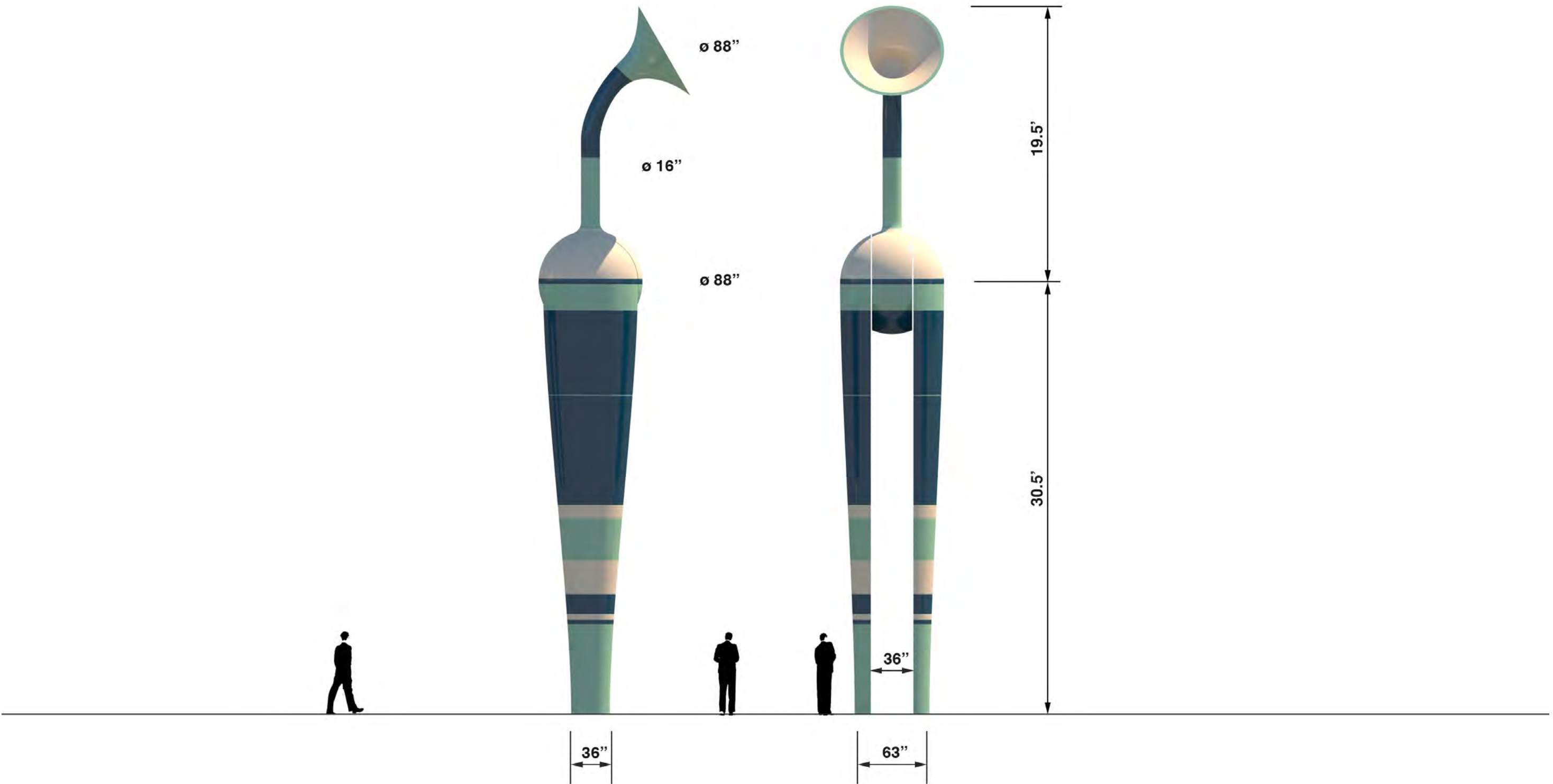
Los Angeles, August 9, 2019



View 01

**CHRISTIAN MOELLER STUDIO LLC.**

CM@CHRISTIANMOELLER.COM | 2425 GLOVER PLACE, LOS ANGELES, CA 90031 | T: 310.435.9564

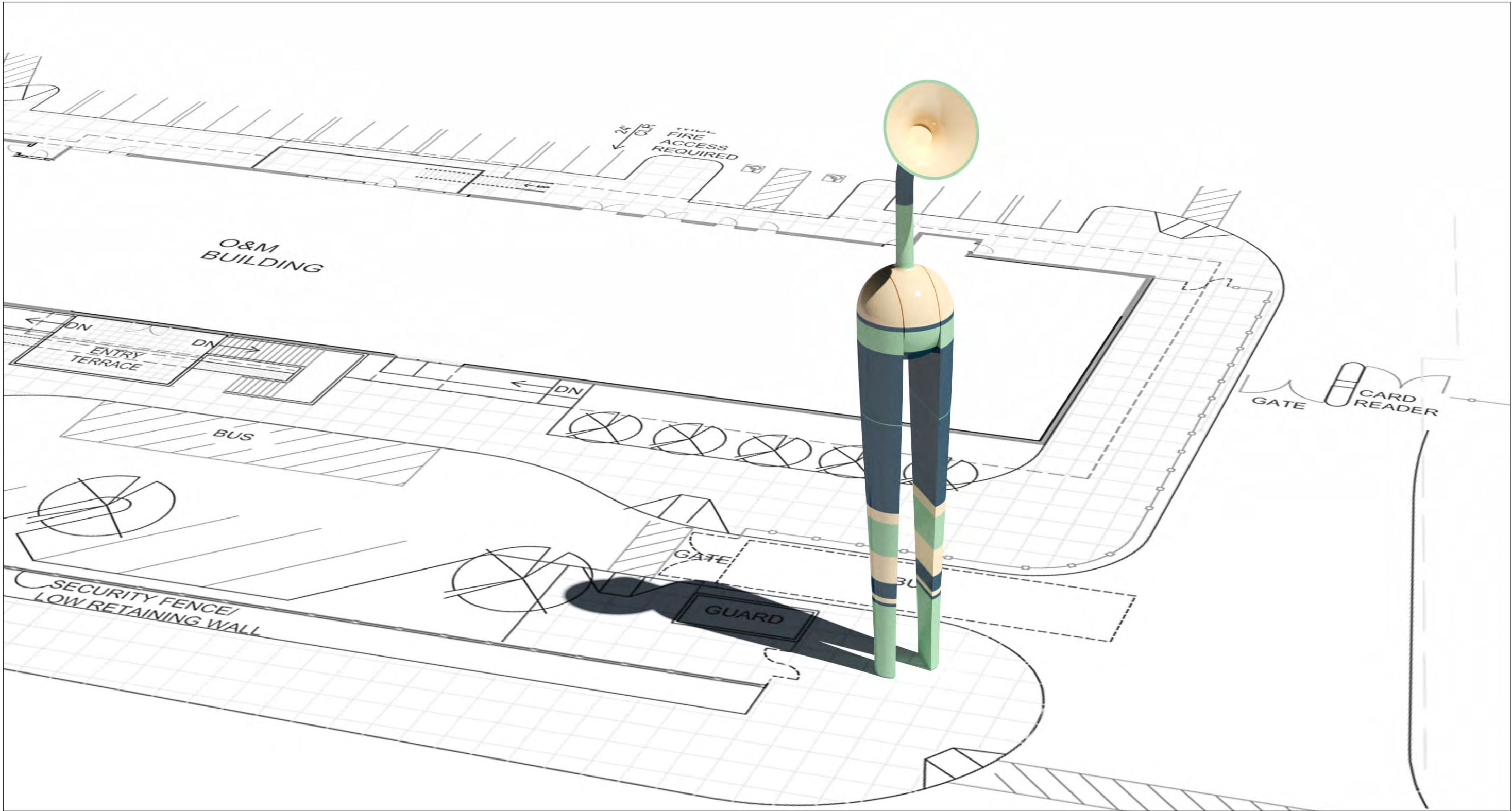


Dimensions

CHRISTIAN MOELLER STUDIO LLC.

CM@CHRISTIANMOELLER.COM | 2425 GLOVER PLACE, LOS ANGELES, CA 90031 | T: 310.435.9564



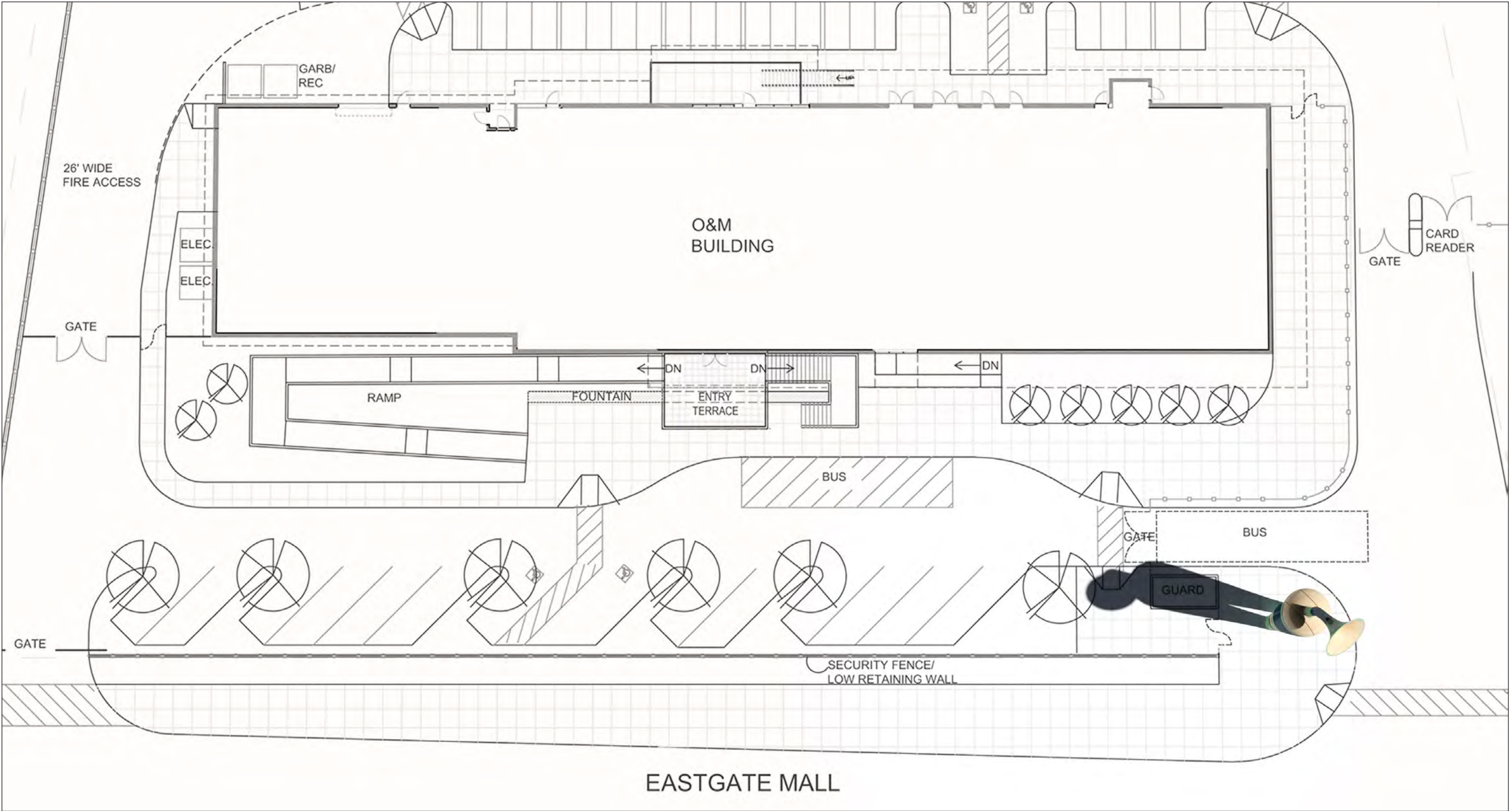


Location

**CHRISTIAN MOELLER STUDIO LLC.**

CM@CHRISTIANMOELLER.COM | 2425 GLOVER PLACE, LOS ANGELES, CA 90031 | T: 310.435.9564



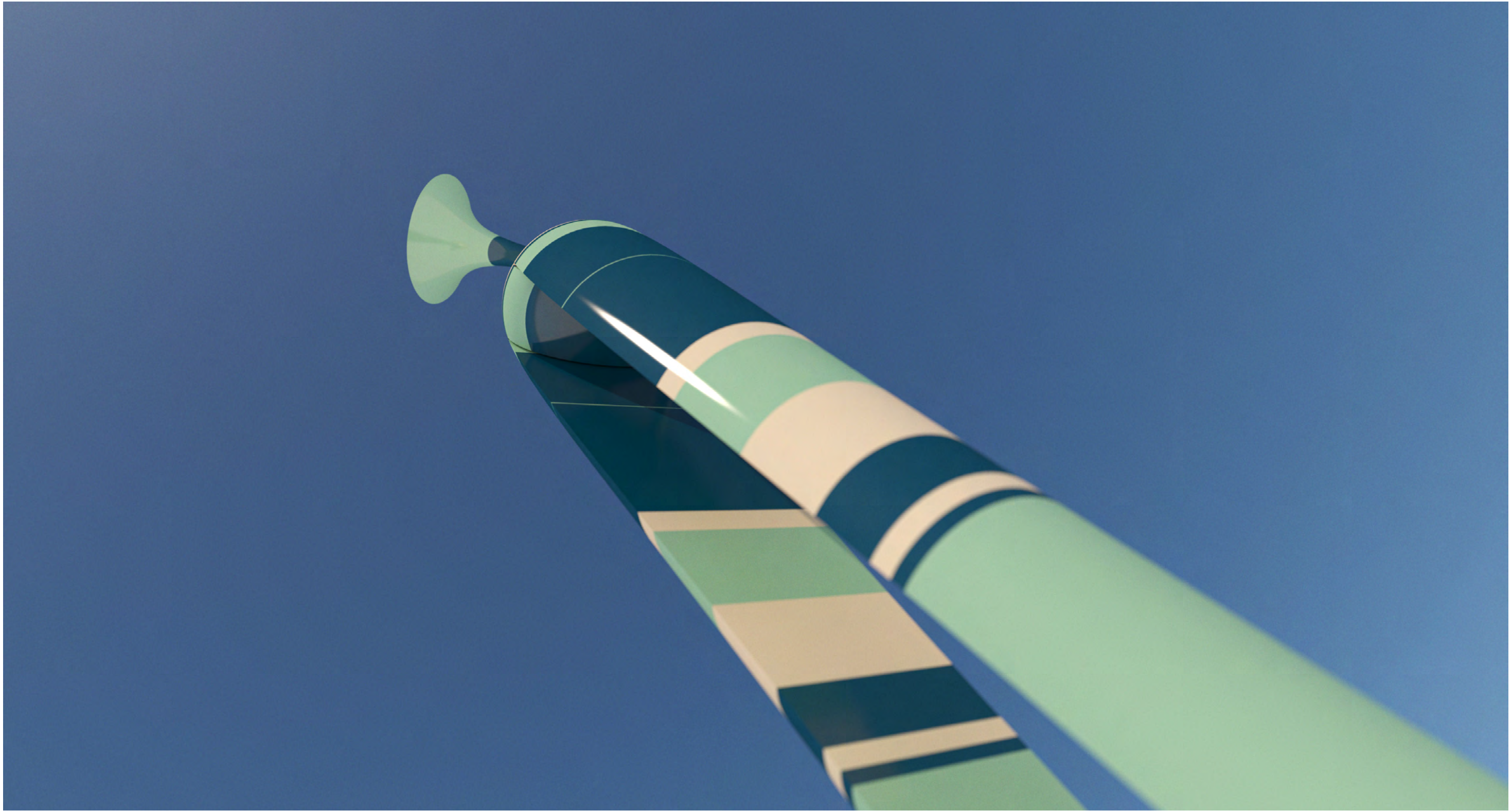


Site Plan

CHRISTIAN MOELLER STUDIO LLC.

CM@CHRISTIANMOELLER.COM | 2425 GLOVER PLACE, LOS ANGELES, CA 90031 | T: 310.435.9564

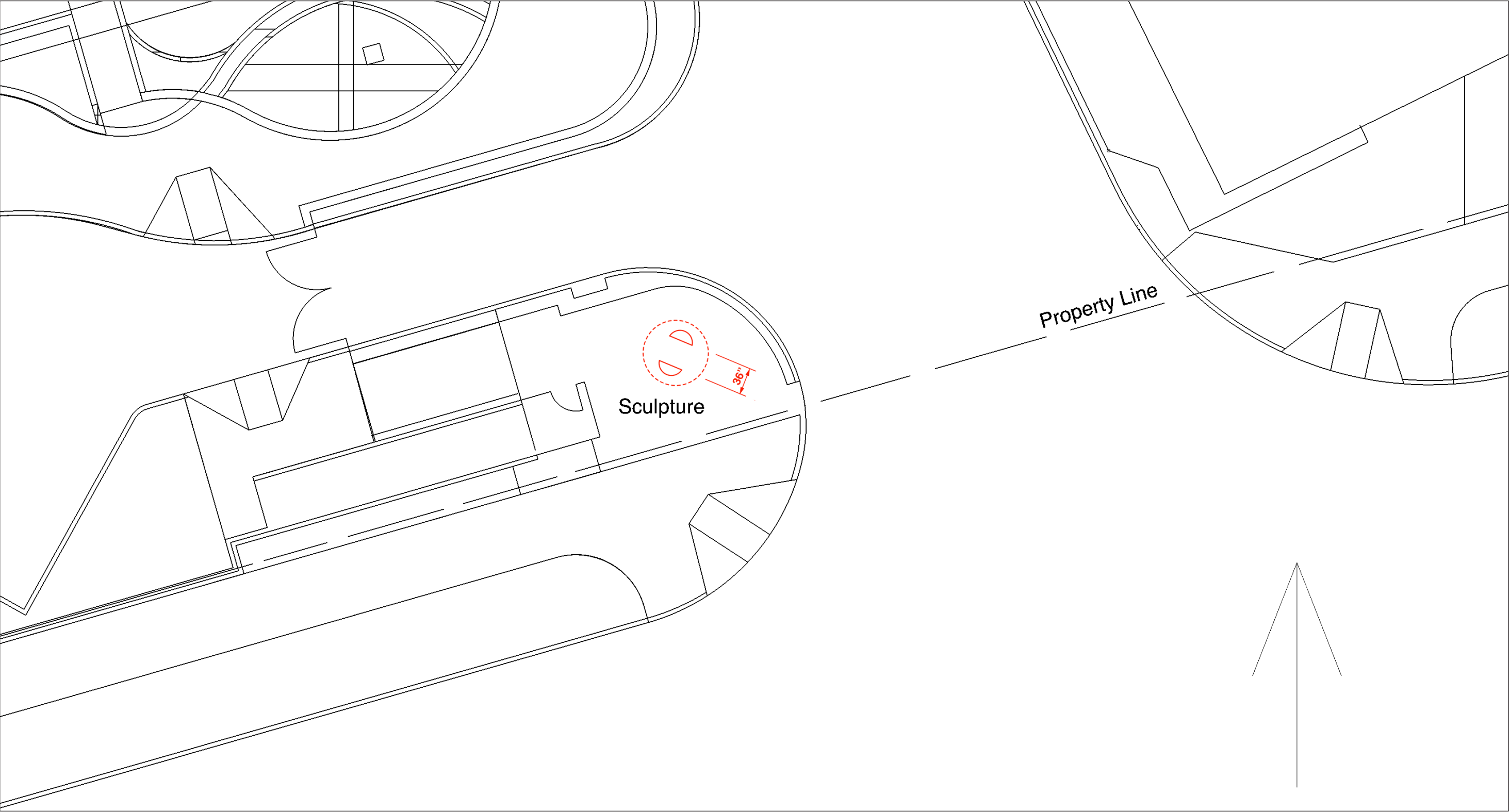




View 02

**CHRISTIAN MOELLER STUDIO LLC.**

CM@CHRISTIANMOELLER.COM | 2425 GLOVER PLACE, LOS ANGELES, CA 90031 | T: 310.435.9564



ADA Plan



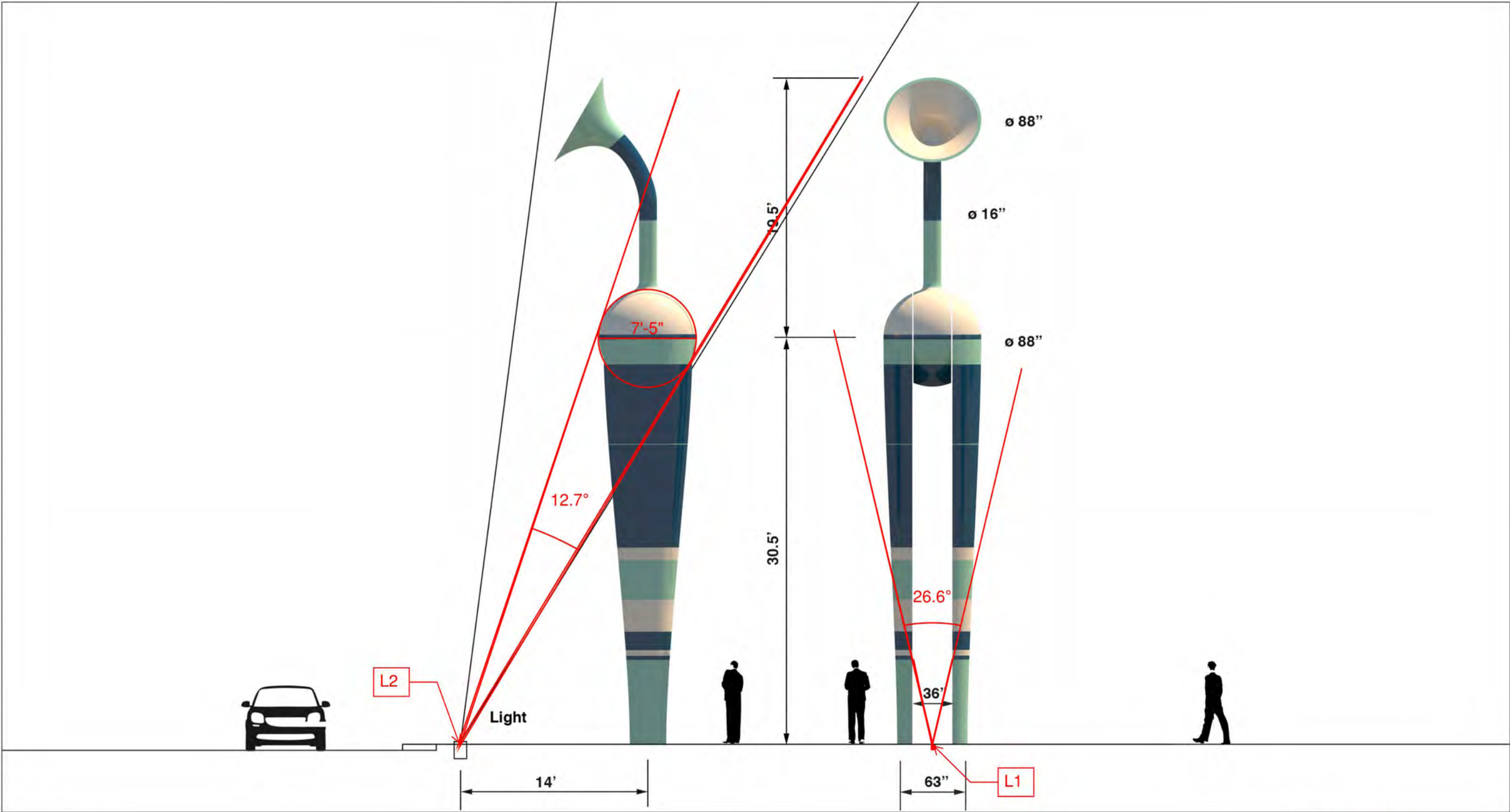


Lighting Concept

**CHRISTIAN MOELLER STUDIO LLC.**

CM@CHRISTIANMOELLER.COM | 2425 GLOVER PLACE, LOS ANGELES, CA 90031 | T: 310.435.9564





Lighting Concept

CHRISTIAN MOELLER STUDIO LLC.

CM@CHRISTIANMOELLER.COM | 2425 GLOVER PLACE, LOS ANGELES, CA 90031 | T: 310.435.9564

LIGHTING DESIGN NOTES  
CONSTRUCTION DOCUMENTS 07/30/19



12710 89th PI NE Kirkland, WA 98034  
Phone: (206) 799-4749  
Email: lblanco@blancalighting.com  
Web: blancalighting.com

Concept

The sculpture “Daphne” allows for multiple readings, appearing for some viewers as a hybrid between a giant Greek amphora and a watering can. Mildly anthropomorphic in its form and located in the entrance area of the new Pure Water treatment plant in San Diego, the sculpture will contribute a significant degree of identity to its neighborhood, and will hopefully develop into an iconic landmark for the city of San Diego as a beacon and point of orientation that is easy to read from a drive-by perspective. The title “Daphne” refers to a female nymph in Greek mythology associated with fountains, wells, springs, streams, brooks and other bodies of freshwater.

Dimensions and Material

The sculpture stands 50’ tall on a footprint of 63” x 36”. Two tall legs end in a spherical body with a diameter of 88”. A neck, with a diameter of 16”, connects to a trumpet shaped head with an outside diameter of 88”. The structural skeleton of the piece will be made from steel and the surface material will be color-coated fiberglass.

Finish

- Sandblasted preparation for fabricated structural steel assembly
- Marine grade fillers for the body enclosure
- Tnemec Hydo-Zinc primer on the structural steel assembly and body enclosure
- Tnemic Fluoronar Paint finish on the body enclosure

Fabrication plan

The internal structure of the sculpture will be fabricated utilizing welded A36 steel structural members and mechanical fasteners. Base plates will be welded to bottom of vertical tube steel. All welding will be performed by a City of Los Angeles certified shop and third party welding inspection by Twinings, Inc, Long Beach. The body enclosure will be fiberglass reinforced resin with stainless steel attachment brackets and hardware to the internal steel frame. The neck and head will be either aluminum and/or fiberglass reinforced resin. The pivot mechanism will be pillow block bearings with Zerk grease fittings.