



Mira Mesa

Community Plan Update

Agenda

Forum on Land Use and Economic Prosperity

October 31, 2019

08:30 am	<i>Sign-In, Networking, and Refreshments</i>
09:00 am	I. Welcome and Opening Remarks <i>Mike Hansen, Planning Director, City of San Diego</i> <i>Chris Cate, Councilmember, City of San Diego</i> <i>Andy Pendoley, MIG</i>
09:15 am	II. Overview: Community Plan Update <i>Alex Frost, Project Manager, City of San Diego</i>
09:30 am	III. Market Demand Analysis <i>Michael Tactay, Keyser Marston Associates</i>
09:45 am	IV. Mobility Vision <i>Amy Jackson, Kimley-Horn</i> <i>Edgar Torres, Kimley-Horn</i>
10:00 am	V. Urban Design Observations and Approaches <i>Gaurav Srivastava, Dudek</i>
	-- BREAK --
10:30 am	VI. Tabletop Discussions: Focus Area Scenarios
11:15 am	VII. Group Discussion: Emerging Themes
11:50 am	VIII. Summary and Next Steps <i>Alex Frost, Project Manager, City of San Diego</i>
12:00 pm	<i>Adjournment</i>

[illegible]

OCTOBER 31, 2019

Forum on Land Use and Economic Prosperity



Mira Mesa

Community Plan Update

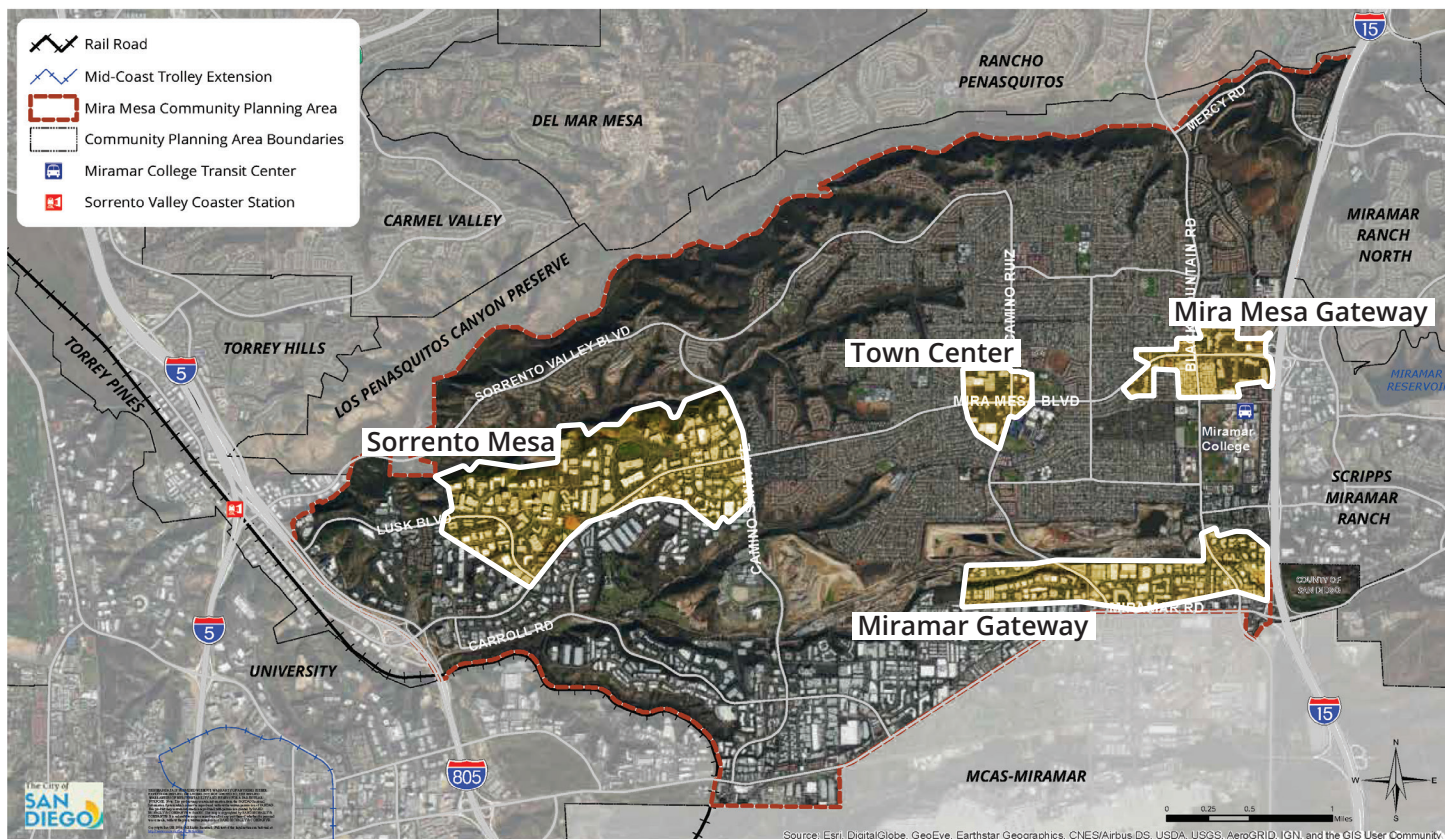
The **Mira Mesa Community Planning Area** (CPA) is approximately 10,500 acres. The CPA is located in the north central portion of the City of San Diego between the Interstate 805 and Interstate 15. The City of San Diego is updating the **Mira Mesa Community Plan**, which was adopted in 1992. The updated Community Plan will take into account current conditions, Citywide goals in the Climate Action Plan and the General Plan, and community specific goals to provide direction for the long-term development of the community. During the update process, Planning Department staff will work with the Mira Mesa community and the public to identify and consider important questions, issues, and opportunities, including:

How will Mira Mesa grow over the next 20-30 years?

How can the community best plan for residential and employment growth?

What services, infrastructure or facilities are needed to meet this growth?

How can we build on the positive economic effect of Mira Mesa?



Mira Mesa Community Plan Area and Focus Areas
Source: Existing Conditions Community Atlas, City of San Diego.

OCTOBER 31, 2019

*Forum on Land Use and
Economic Prosperity*



Mira Mesa
Community Plan Update

URBAN DESIGN PRINCIPLES

EXPLORE MIXED-USE

Provide opportunities for workers to live near jobs to reduce congestion.

CREATE PLACES THAT ATTRACT TALENT

Walkable, bike-able, transit-accessible, and amenity rich.

PREPARE FOR FUTURE JOB GROWTH

Recognize the changing nature and needs of employment space.

LAND USE

PEDESTRIANS FIRST

The pedestrian experience is the defining experience of places.

DESIGN WELL-BEHAVED BUILDINGS

Buildings should respond to and complement activities outside.

CONNECT TO NATURE

Facilitate experiences that contribute to better physical and mental health.

PLACE-MAKING

The **Mira Mesa Community Plan Update** will be a collaborative process with ongoing opportunities for public input. The objectives for today's discussion are: 1) to gauge participant aspiration and vision for each Focus Area, and 2) to seek input on urban design principles and scenarios. To help in the discussion, consider the following questions:

Why is this place important to you?

What do you want to see change or improve?

Which urban design principles that we shared are most important to you? Why?

What are your thoughts about each of the scenarios?

Which scenario is closest to your vision?