

Capital Improvements Program

Community Planning

[The City of San Diego General Plan \(2008\)](#) sets out a long-range vision and policy framework for how the City should plan for projected growth and development, provide public services, and maintain the qualities that define San Diego over the next 20 to 30 years.

The General Plan is structured to work in concert with the [City's community plans](#) and other adopted plans and policies, such as mobility plans, Parks Master Plans, Climate Action Plan, and Climate Resilient SD. It provides guidance emphasizing the need to reinvest in existing communities. It has a strong sustainability focus through policies addressing transit/land use coordination; climate change; healthy, walkable communities; green buildings; clean technology industries; water and energy conservation and management; and urban forestry. In addition, the General Plan features protections for prime industrial lands, strategies for providing urban parks, toolboxes to implement mobility strategies, and policies designed to further the preservation of San Diego's historical and cultural resources.

The General Plan includes the City of Villages strategy to focus growth into mixed-use villages that are pedestrian-friendly districts, of different scales, linked to the transit system. Each village vision is unique to the community in which it is located, yet all villages would be pedestrian friendly and inviting, characterized by accessible and attractive streets and public spaces. Individual villages are intended to offer a variety of housing types and affordability levels. The strategy draws upon the character and strengths of San Diego's natural environment, distinctive neighborhoods, and activity centers that together form the City as a whole.

The General Plan is comprised of an introductory Strategic Framework section and the following elements: Land Use and Community Planning; Mobility; Economic Prosperity; Public Facilities, Services, and Safety; Urban Design; Recreation; Historic Preservation; Conservation; and Noise. The Housing Element update was adopted separately in 2021 and is provided under separate cover from the rest of the 2008 General Plan. The City is also in the process of preparing an Environmental Justice Element. The policies within each element were developed with ten guiding principles in mind. These principles are to achieve:

- An open space network formed by parks, canyons, river valleys, habitats, beaches, and ocean;
- Diverse residential communities formed by the open space network;
- Compact and walkable mixed-use villages of different scales within communities;
- Employment centers for a strong economy;
- An integrated regional transportation network of walkways, bikeways, transit, roadways, and freeways that efficiently link communities and villages to each other and to employment centers;
- High quality, affordable, and well-maintained public facilities to serve the City's population, workers, and visitors;
- Historic districts and sites that respect our heritage;
- Balanced communities that offer opportunities for all San Diegans and share citywide responsibilities;
- A clean and sustainable environment;
- A high aesthetic standard.

The Public Facilities, Services, and Safety Element of the General Plan includes policies on the prioritization and provision of public facilities and services, with strong policies for prioritizing investments where they

Capital Improvements Program

Community Planning

are most needed; evaluation of new growth; guidelines for implementing a financing strategy; and guidelines for the provision of specific facilities. This element discusses City challenges, including a public facilities deficit, and recommends that facilities deficiencies be remedied through diverse funding strategies such as joint-use, more-efficient resource allocations, and fiscal reform efforts that provide equitable delivery of revenues to the City from the State.

Implementation of the General Plan is being accomplished through a broad range of legislative and regulatory actions that influence private and public development. The General Plan Action Plan identifies measures and timeframes for implementing General Plan policies. The Action Plan highlights eight key initiatives which are critical to General Plan implementation, as follows: Community Plan Updates, Climate Change Initiatives, Water Supply and Conservation Efforts, Land Development Code (LDC) Amendments, Public Facilities Finance Strategy, Economic Development Strategic Plan, Parks Master Plan, and Historic Preservation Incentives. In addition, the General Plan is consistent with the 2021 Regional Plan prepared by the San Diego Association of Governments (SANDAG).

Community Plans

The City's community plans contain additional detailed planning guidance and are part of the General Plan. Community plans establish specific recommendations and objectives in each community for future land uses and public improvements. The community plan provides a long-range physical development guideline for elected officials and citizens engaged in community development. Providing citizens with an opportunity for involvement in advising the City Council, the Planning Commission, and other decision makers on development projects, community plan amendments, rezoning projects, and public facilities is a critical component of achieving the vision of community plans. Planning group recommendations are an important component of the planning process, along with strong and equitable community involvement from stakeholders that are representative of the demographics of the community.

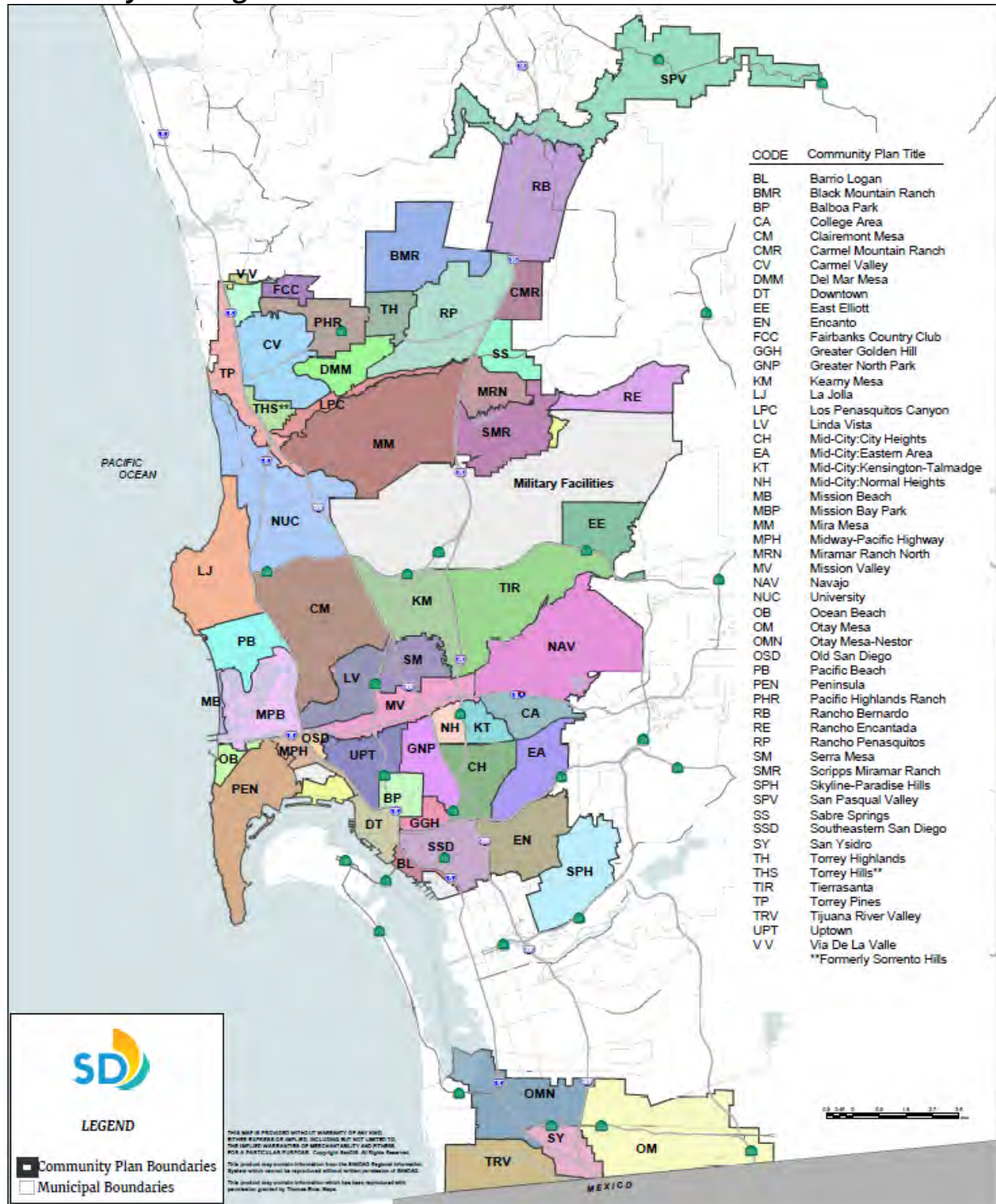
The General Plan, community plans, and other adopted plans and policies, such as mobility plans, Parks Master Plan, Climate Action Plan, and Climate Resilient SD are policy documents, which require regulatory tools and programs to help implement their goals and standards. The implementation tools for planning documents include the Municipal Code, specific plans, the Multiple Species Conservation Program (MSCP), zoning, code enforcement, development impact fees, and others. These regulations and programs help guide land use; development and design; and, similar to community plans, rely on equitable public engagement to inform their successful implementation.

CIP Conformance to the City's General Plan, Community Plans, and Other Adopted Plans and Policies

The capital improvement project information in the current budget was reviewed by City planners for conformance with the City's General Plan, community plans, and other adopted plans and policies, as required by [Council Policy 000-02](#) and General Plan Policy PF.A.4.a. These capital improvement projects were found to be consistent with the General Plan, relevant community plans, other adopted plans and policies, and facilities financing plans.

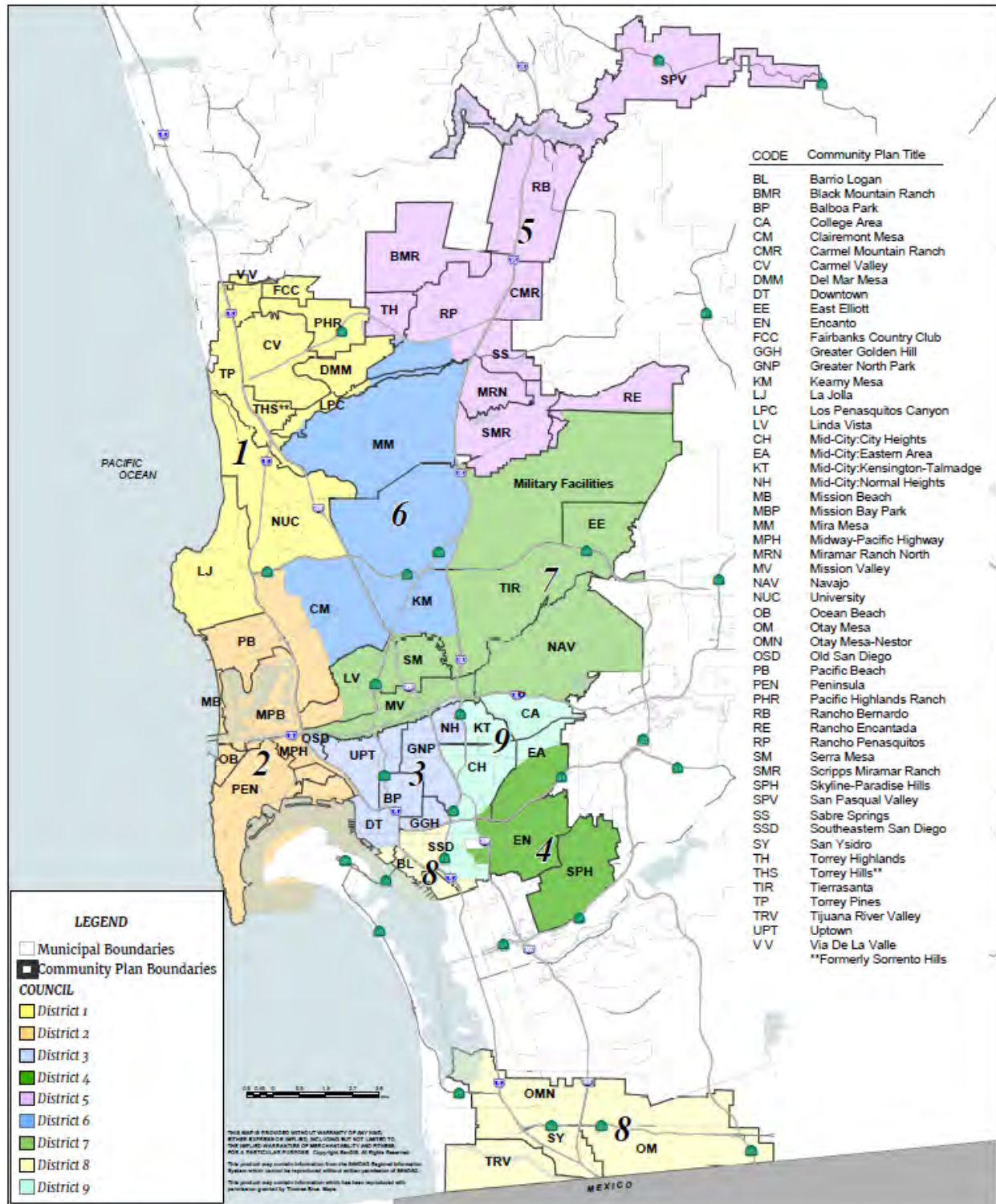
Capital Improvements Program Community Planning

Community Planning Areas



Capital Improvements Program Community Planning

Community Planning Areas by Council District



Note: The above Community Planning Areas by 2011 Council District map will be revised in Fiscal Year 2023.