

Public Works Department

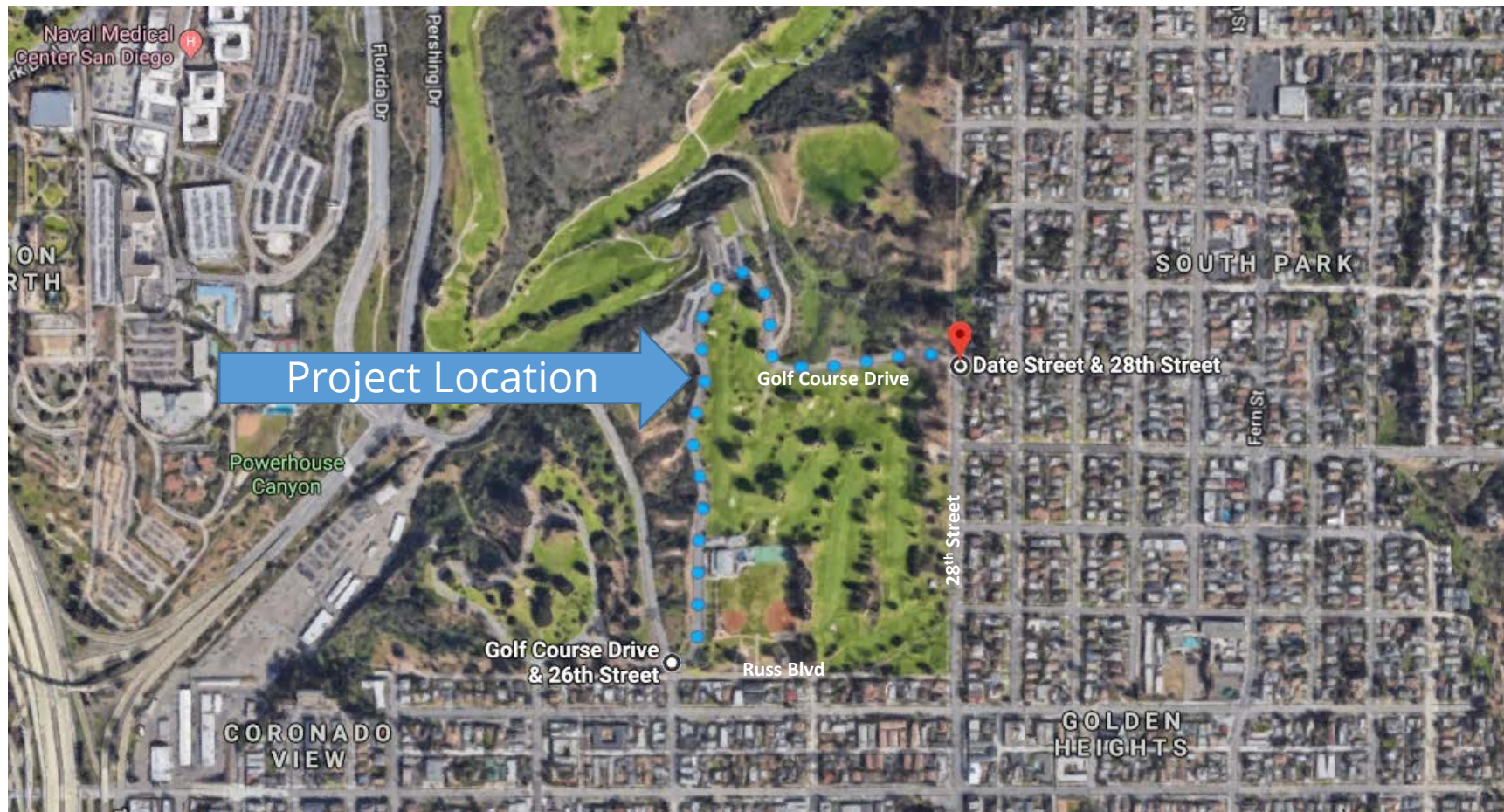
Golf Course Drive Improvements Project

Municipal Golf Committee
September 13, 2018



Project Location

Golf Course Drive from the intersection of Golf Course Drive and 26th Street to the intersection of Date Street and 28th Street

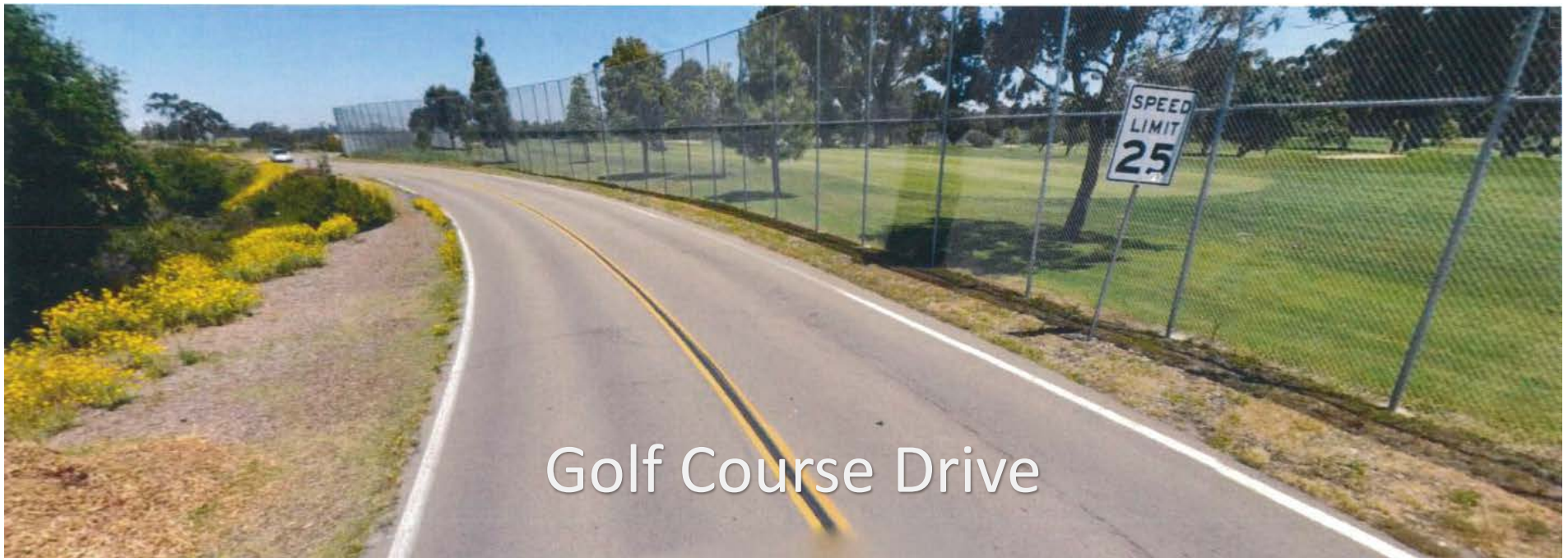




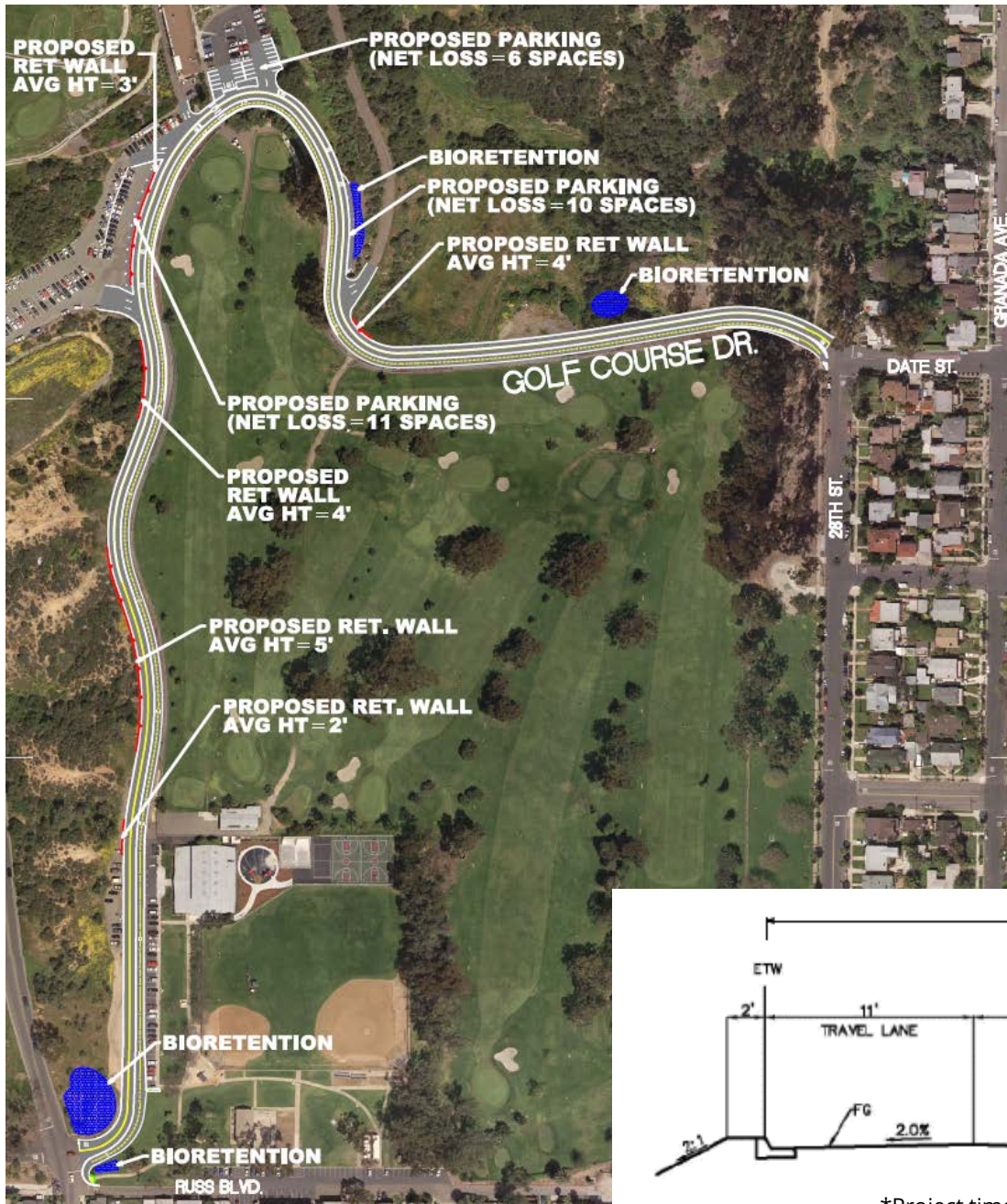
Project Objective

Provide pedestrian pathway and bicycle facilities along Golf Course Drive from 26th Street to 28th and Date Street.

A Feasibility Study was prepared to evaluate various alternatives to meet the project objective.



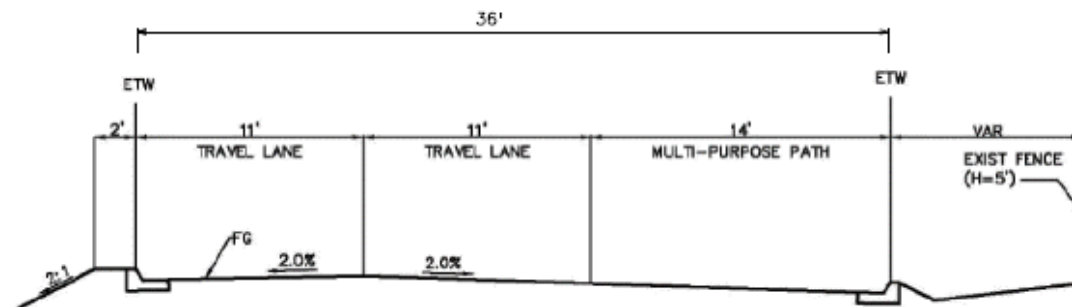
Golf Course Drive



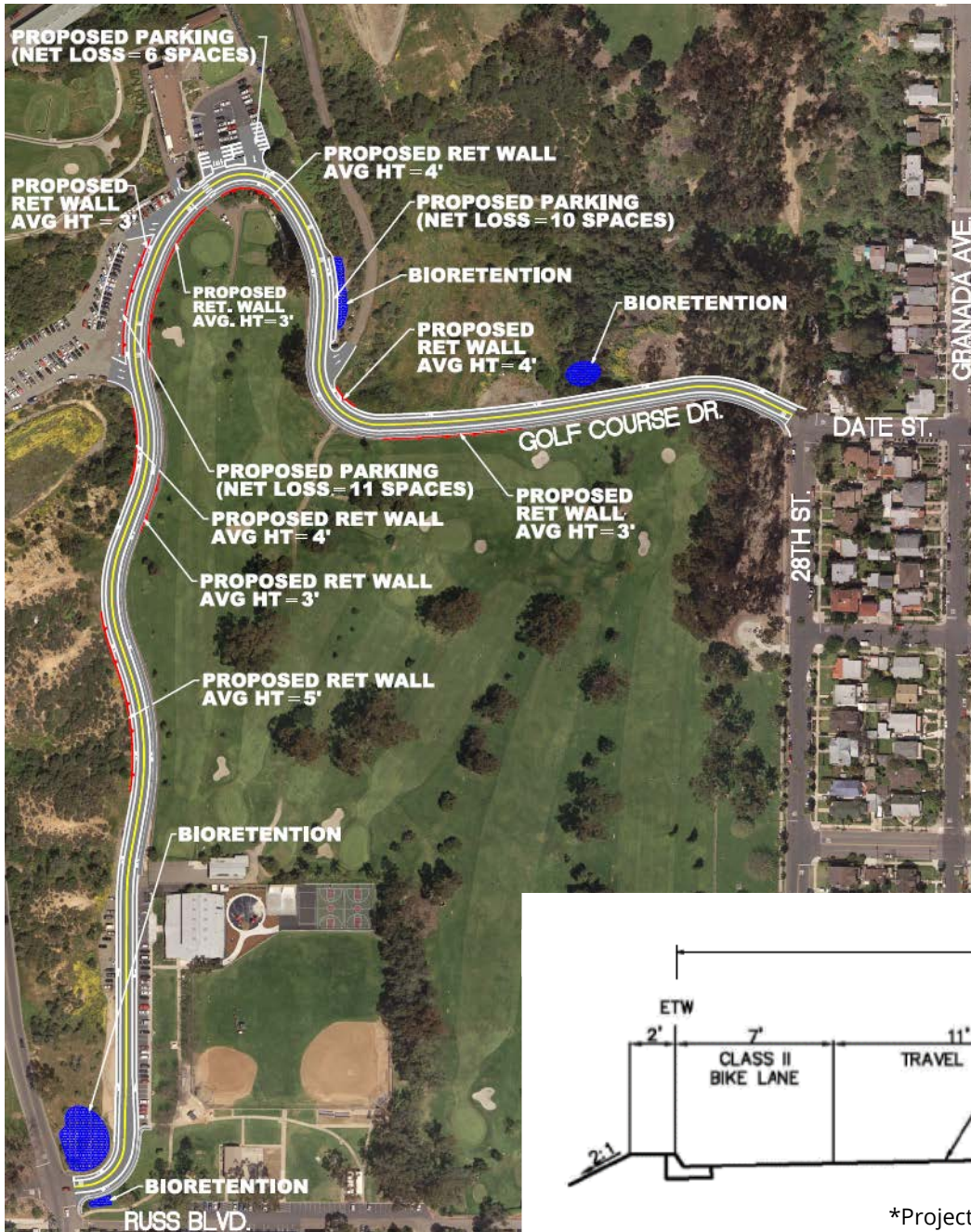
Alternative 1

Two 11' Travel Lanes with 14' Multi-Purpose Path adjacent to the northbound lane.

- Requires reverse angle parking at the Recreation Center
- Multiple retaining walls with average height ranging from 2 to 5 feet
- 27 net loss parking spaces (**will be designed to zero**)
- No sidewalk
- Total project cost: \$4,230,000
- Project timeline*: 3 years and 5 months



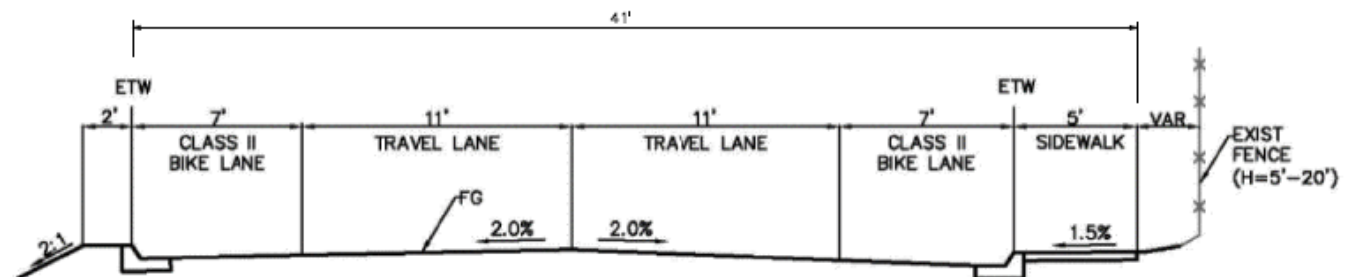
*Project timeline is from when the design phase is funded and ready to begin



Alternative 2

Two 11' Travel Lanes with two 7' Class II Bike Lanes and 5' Sidewalk adjacent to the northbound lane

- Requires reverse angle parking at the Recreation Center
- Multiple retaining walls with average height ranging from 3 to 5 feet
- 27 net loss parking spaces **(will be designed to zero)**
- Largest cross-section
- Total project cost: \$5,050,000
- Project timeline*: 3 years and 6 months
- Approved by the Golden Hill Community Planning Group on July 11, 2018 and the Balboa Park Committee on September 6, 2018.



*Project timeline is from when the design phase is funded and ready to begin



Comparison of Alternatives

Alternative	Description of Alternative	Total Project Cost	Total Project Schedule*
1	14' Multi-Purpose Path (Shared Bicycle and Pedestrian travel lane)	\$4,230,000 (\$710,000 Design \$3,520,000 Const)	3 Years and 5 Months
2	Class II Bike Lanes and a Sidewalk	\$5,050,000 (\$735,000 Design \$4,315,000 Const)	3 Years and 6 Months

*Project timeline is from when the design phase is funded and ready to begin. All alternatives will require a Site Development Permit and a Mitigated Negative Declaration



Questions?