

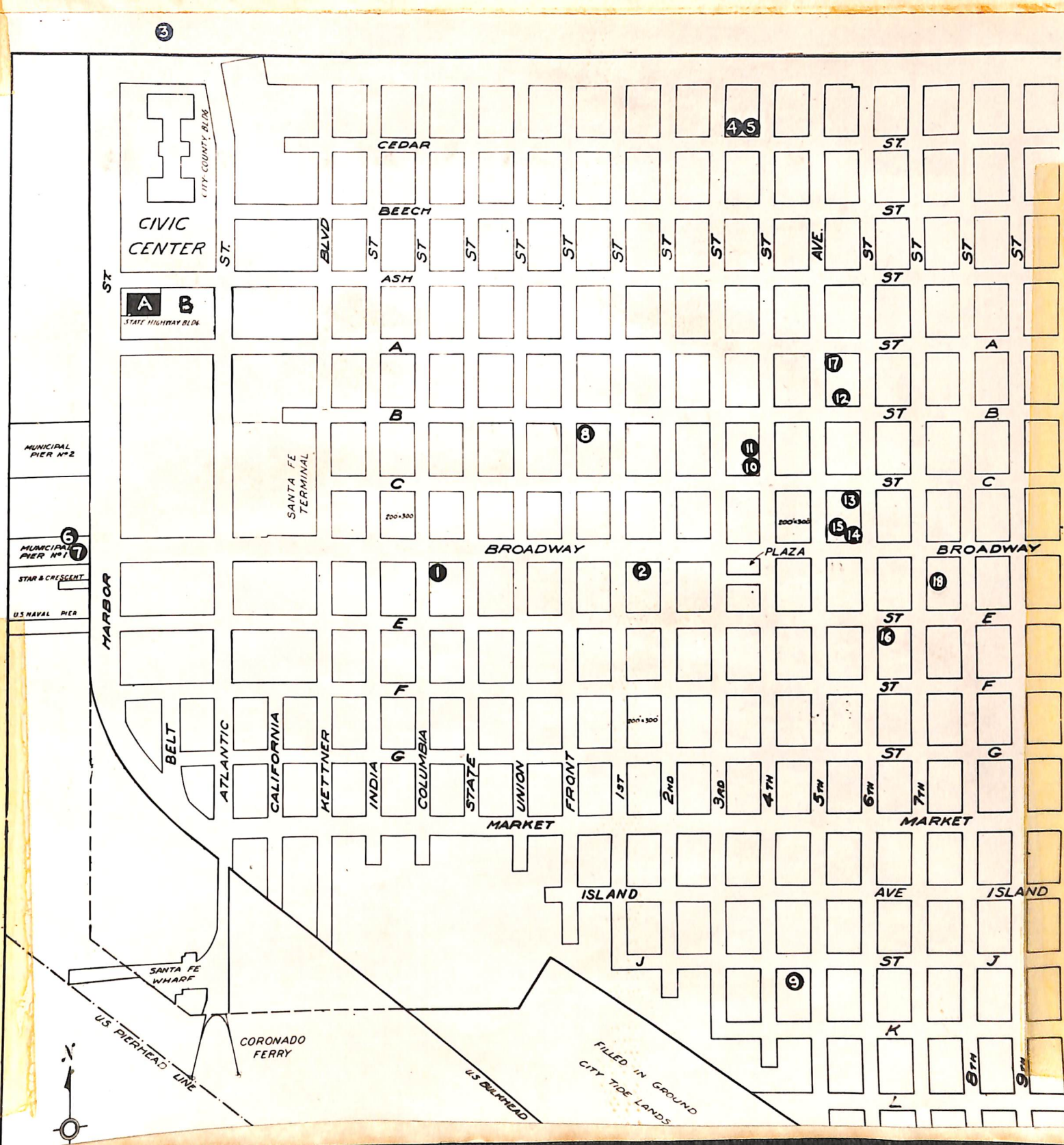
*How State Offices
are Housed in San Diego*

SURVEY COMPILED BY THE

San Diego Chamber of Commerce

THIS survey shows the areas occupied by various State offices, the annual rental and the number of employees in each office.

Administrative offices of the State are located in rented buildings and are scattered over a wide area of the business district in San Diego. Their locations are indicated on this map.



State Offices in San Diego

NAME OF OFFICE	ADDRESS	AREA OCCUPIED SQ. FEET	ANNUAL RENTAL	NUMBER EMPLOYEES	REMARKS
1. University of California Agricultural Extension Service.	Chamber of Commerce Building	2,000	\$ 540	16	Need auditorium and additional space
2. Relief Administration.	Spreckels Building	13,000	12,576	125	
3. Bureau of Cannery Inspection.	2160 Belt Street	1,284	600	10	
4. Board of Equalization.	1608 4th Avenue	3,000	1,900	40	
5. Motor Vehicle Department	310 Cedar Street	6,500	2,400	55	105 Employees December-February
6. Plant Quarantine Service Department of Agriculture.	Broadway Pier	602	600	4	
7. Fish and Game Commission.	Broadway Pier	210	360	4	
8. Department of Employment.	1165 Front Street	11,000	2,400	18	10 part-time employees
9. Commodity Distribution Division.	411 J Street	10,000	1,500	3	30 W. P. A. workers. Need railroad siding
10. Compensation Insurance Fund.	1122 4th Avenue	1,318	1,200	8	
11. Labor Commissioner.	1122 4th Avenue	856	960	4	Need more space
12. Contractors' State License Board.	521 B Street	100	174	2	
13. University of California Extension Division.	Scripps Building	400	480	1	Several part-time teachers
14. Veterans' Welfare Board.	San Diego Trust & Savings Building	500	420	2	5 part-time employees
15. Income Tax Division.	San Diego Trust & Savings Building	500	500	2	Need more space
16. District Court of Appeals.	Electric Building	3,939	3,600	7	
17. State Blind Shop.	1261 5th Avenue	1,500	1,800	21	Need more room
18. Real Estate Department.	943 7th Avenue	536	420	2	

RECAPITULATION

Total Area Occupied . . (square feet) 57,245
 Total for Annual Rental \$ 32,430
 Total Number of Employees 324



THE State Highway Department XI District Office, shown here, occupies its own building adjacent to a site available to the State for an office building which it needs and should have in this community.



SAN DIEGO recently completed a City-County Administration Building at the Civic Center and reserved a block for State office buildings.

The State Highway Building was the first unit to be completed.

A site adjacent (indicated in black) to The State Highway Building is reserved for the State Motor Vehicle Building, the balance of block is suitable for and available to the State for general office building use.

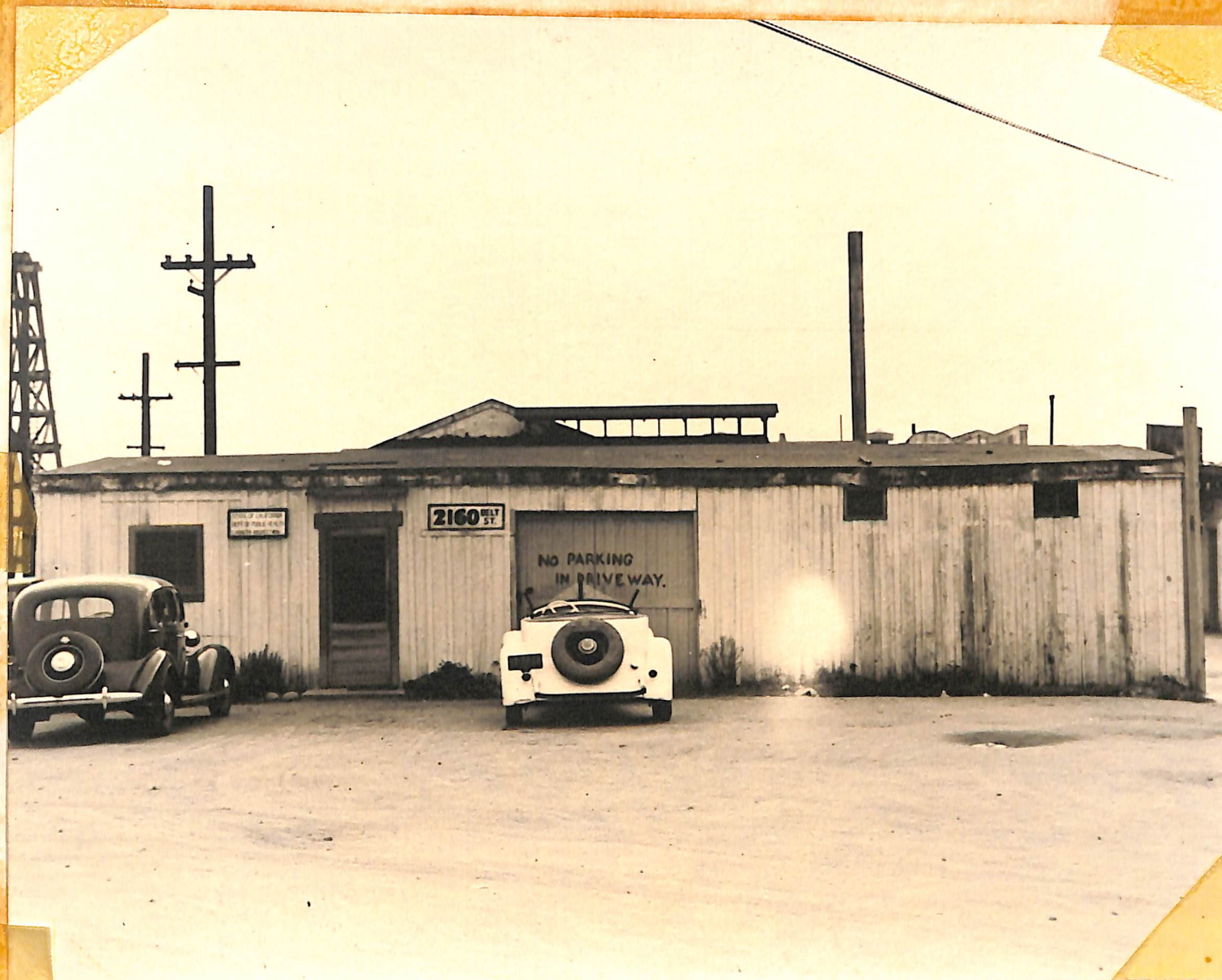
*The Agricultural Extention
Service* occupies office
space on the second floor
of the San Diego Chamber
of Commerce Building at
Columbia and Broadway.





THE *State Relief Administration* rents office space in the Spreckels Building, located between First and Second Avenues on Broadway.

THE *Bureau of
Cannery Inspec-
tion* rents office
space in this shed
at 2160 Belt St.





THE *Board of Equalization* rents offices in a building which was formerly owned by and known as the Elks' Building. The *Department of Motor Vehicles* rents space in this same building. This Department will construct its own building at the Civic Center.

*THE Department of
Agriculture, Bureau of
Plant Quarantine and
State Fish and Game
Commission are housed
at the Foot of Broadway
on a municipal pier.*





THE State Employment Service occupies this building which also houses the California Unemployment Reserve Commission.

*THE Commodity
Distribution
Division rents
office space at
411 J Street.*





THE *Division of Labor Statistics and Law Enforcement* rents office space in the California Theatre Building. This building also houses the offices for the *Compensation Insurance Fund*.

*THE Contractors' State
License Board rents office
space and a building
located at 521 B Street.*





THE *University of California*
rents office space in the
Scripps Building on the corner
of 6th Avenue and C Street.

THE *Veterans' Welfare Board* rents office space in the San Diego Trust and Savings Building at 6th Avenue and Broadway.

In this building the *Income Tax Division* is also located.





*THE District Court of
Appeals rents space in the
Electric Building on the
corner of 6th Ave. & E St.*

THE *State Blind Shop*
rents office space in a
building located at
1261 5th Avenue.

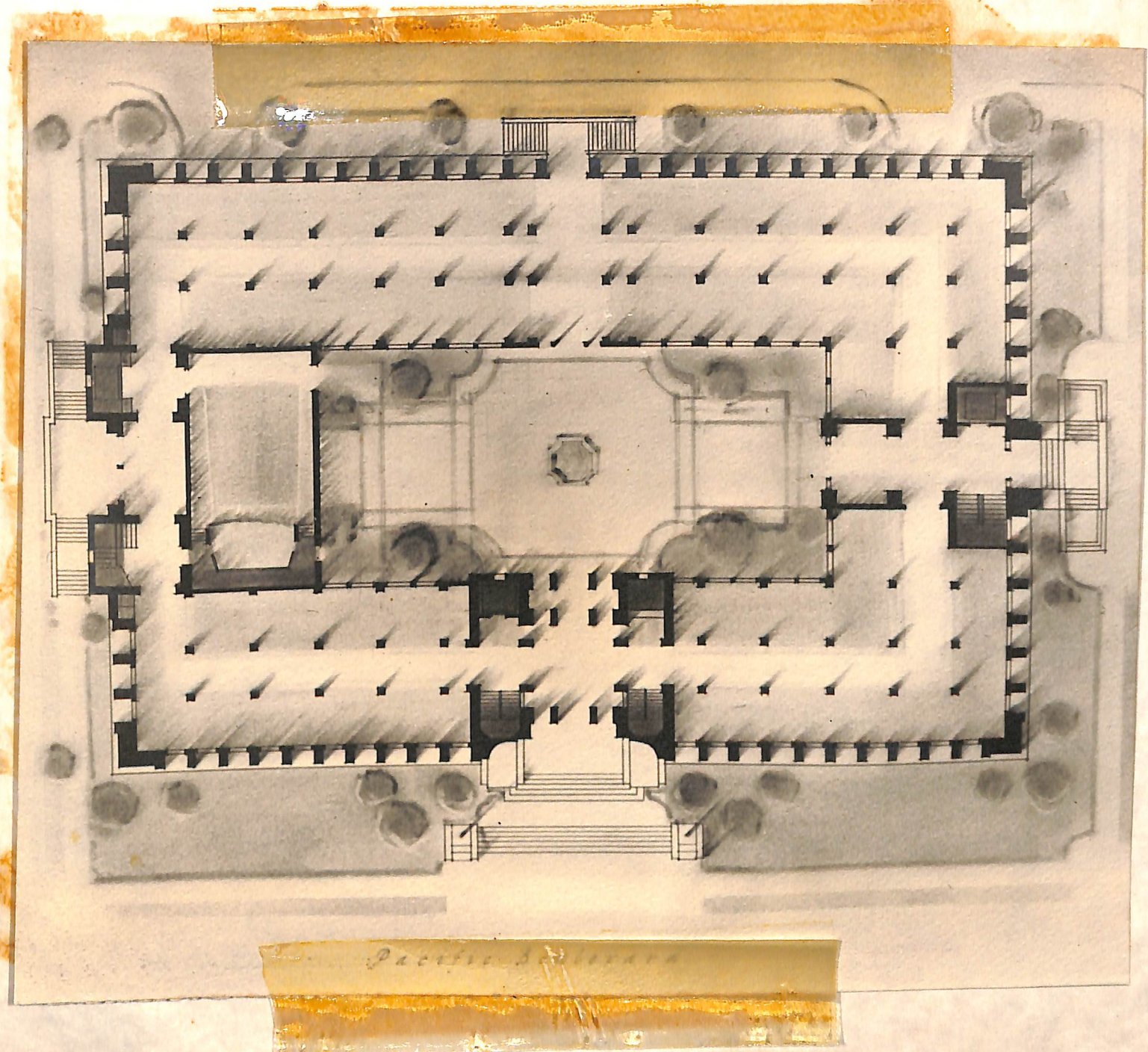




THIS dignified *City-County Administration Building* houses City and County Governmental Offices.

It was constructed at a cost of \$2,000,000 and became the second building in the Civic Center area. This building has been occupied since January, 1939.

A preliminary floor plan showing how the State Building could be accommodated on the site available and fronting on Pacific Boulevard.





This is the front elevation suggested for the State Office Building which was designed to conform to the

architecture which has been adopted by the City and County of San Diego and by the State Architect.

*California State
Building in Los
Angeles Civic Center.*





*California State
Building in San Fran-
cisco Civic Center.*