

How-To Draw Graffiti in 3D

by James Jepsen

How to Draw Graffiti ... the "Legible Graffiti" way.

The supplies listed for Legible Graffiti are a lightboard (or window: some clear surface that would enable seeing through various kinds of paper), markers (or other multicolored pencils, pens, crayons) to draw with, and paper (lots and lots of paper). I use blank "copy paper" you can find at most supply stores like Michaels or Staples.

1. Lightboard or Window (use blue tape to hold the design on the surface).
2. Markers (any kind of colors, pen, pencil, crayons)
3. Paper (most any kind of paper. Might need lots of it. I use blank copy paper)

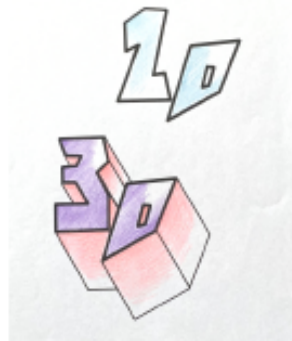
While original drawings, letters, numbers, and symbols can be of any sized paper ... practicing the "Legible Graffiti" using half or quarter sheets for making a twin of the original design to work into 3D will save paper.

Another tip ... save all of your original flat designs, because they can be used many times.

Unless you are using a clear transparency sheet (found at most stores or online) to protect your original designs and light surface from damage from permanent markers and pens, I would recommend using a water based pen or a pencil.



Some fancy lettering here in 3D.

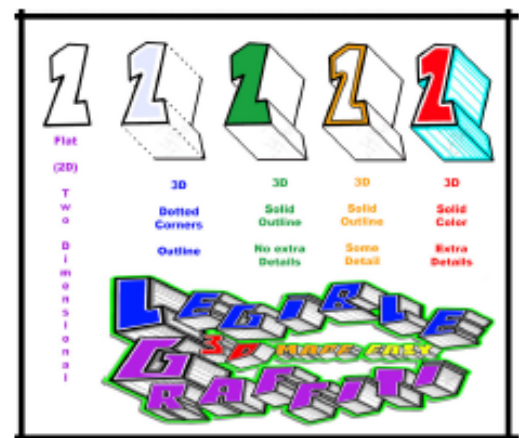


2D: Two Dimensional (flat shape, letter, number or symbol ... has a length and a width).

3D: Three Dimensional (Not a flat shape, has a length, a width, and a thickness of some kind).



Thank you for watching Legible Graffiti. I would like to welcome you to Legible Graffiti: 3D Made Easy. I hope you enjoy and have lots of fun.





The original design was created by the Library Marketing Team. I drew sketch A after looking at their design.

I decided to have some fun with their design just to see what it would look like with more three dimensional flavor to it.

The C sketch applied 3D to the outer shape, and then added a shadow below the design.



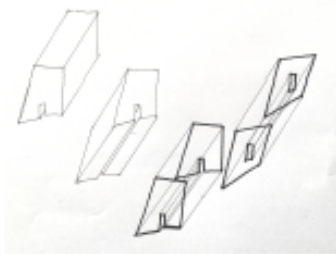
In sketch D, I just played with the text.

For the E sketch, I played with the text lettering, and the outside shape to give the design an almost cookie-cutter feel to it.



With B sketch, the outer shape of the scroll and the lettering can be played with together, or separately.

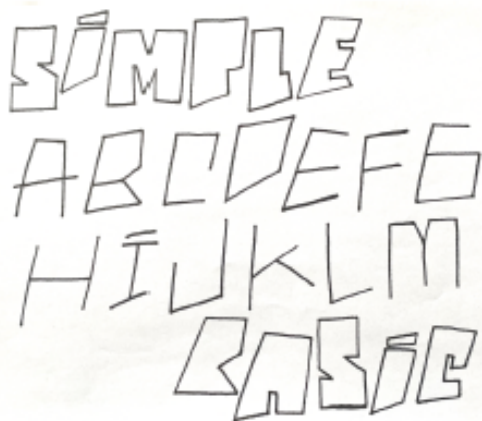




Here the letters A and D have some angle guide lines added to link them together.



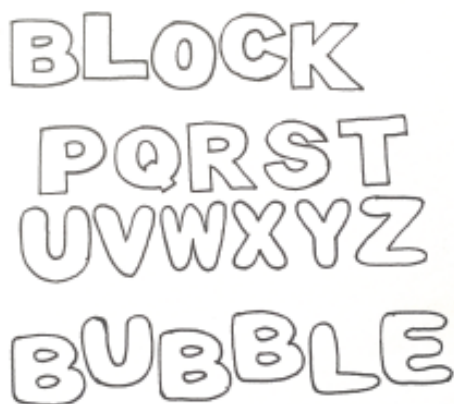
Colorful Examples of "Show It" and "Layout".



Examples of a Simple hand style.

The left side shows the lettering flat (2D).

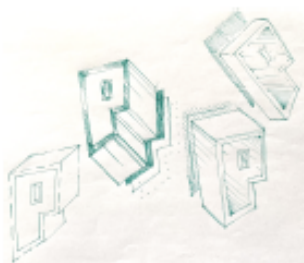
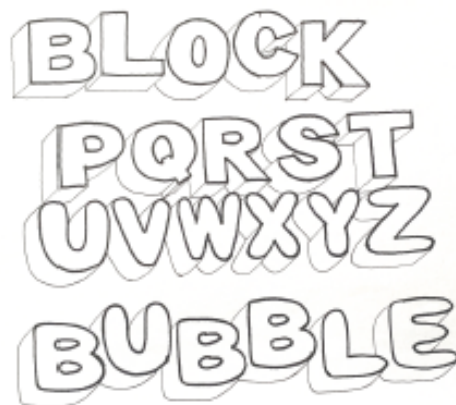
The right side shows the lettering in 3D.



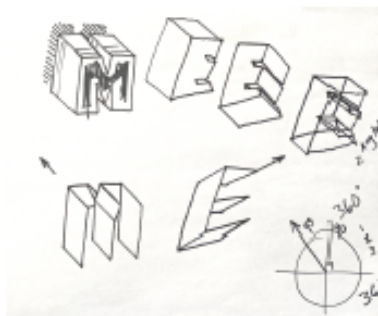
Examples of a Block or Bubble lettering style.

The left side shows (2D).

The right side shows (3D).



Four Examples of the letter P in 3D.



Using Simple hand-lettering M and E, and Block lettering M and E for 3D.

With 360 different degrees to choose from ... try playing with more than one angle on the page.

SUPPLIES

LIGHT BOARD

MARKERS

PAPER



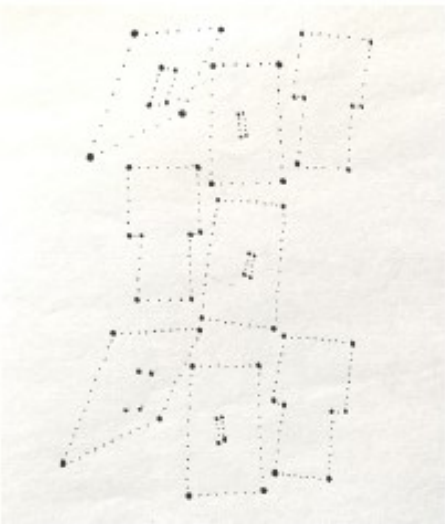
"How To" in three different styles. This example does not connect corners, but does show (with red, black, and dotted layers), how easily Legible Graffiti can change flat lettering into something fun.

LEGIBLE A LIGHT SOURCE IS THE KEY

Having a light source is key to Legible Graffiti. Three dimensional drawing will be fun using a light board, or a window.



Make sure you protect your light surface (whether it's a board, box, or window) by using a transparency sheet or piece of plastic.



Here is "Dot To Dot" in dots, lines ... and 3D.

M E

M E

SIMPLE LEGIBLE GRAFFITI

P R

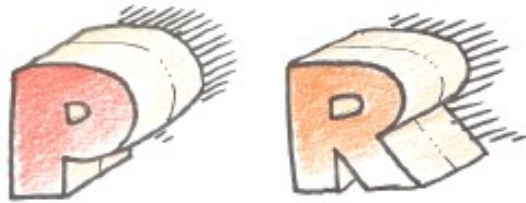
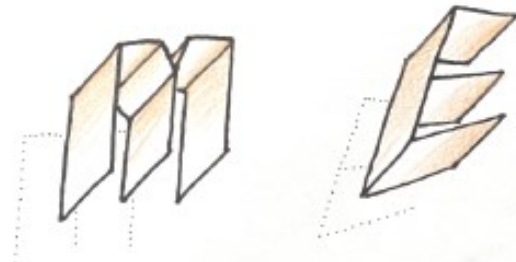
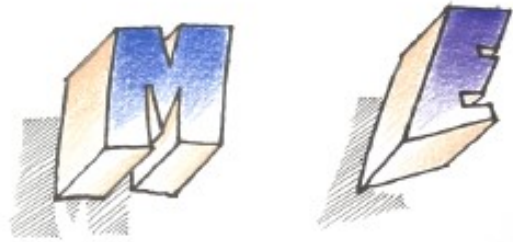
U W

BLOCK BUBBLE LEGIBLE GRAFFITI

Practice drawing the designs on this page, on other blank sheets of paper.

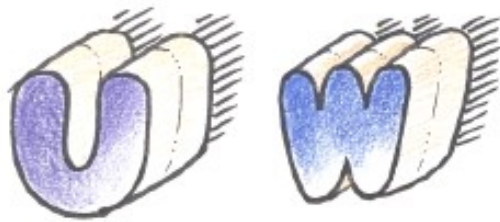
Focus on one direction at a time, so your lines stay parallel.

EXAMPLES

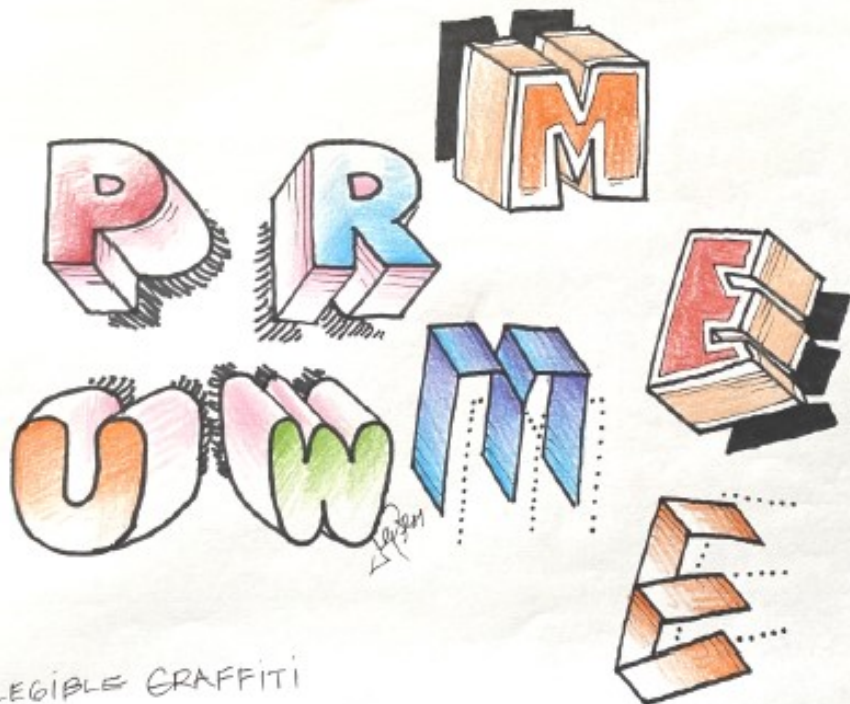


Practice your 3D designs by making them similar to the examples on this page.

Practice, practice ... practice! There are three hundred and sixty different angles.



When making 3D lettering, most designs stay with one or two angles, so you will have



Practice
your
handwriting
in
3D.

LEGIBLE GRAFFITI

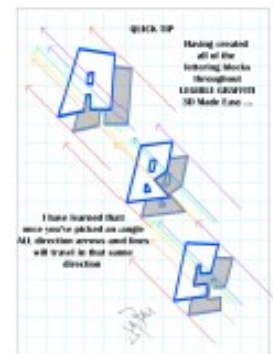


To maximize LG3D fun ...

Use half (1/2) or quarter (1/4) sheets of blank paper!

Fold the paper in half (for two half sheets), and then in half again (for four quarter sheets),

Separate the sheets.



LEGIBLE GRAFFITI channel on YouTube
<https://www.youtube.com/channel/UCYa57q6DMMWzzwQkGGE5ozw>



I have some more Legible Graffiti demonstrations on my YouTube channel. Feel free to watch all the videos, and subscribe to my channel. Thank you for viewing this document.

Practice 3D lettering on this page:

