

**THE PICKLEBALL
ASSOCIATION OF
SAN DIEGO**

Sharing Public Resources

**PASD Request for Temporary Use of
6 Public Tennis Courts**

All Agree that the City of San Diego Needs a Dedicated Pickleball Facility

- Pickleball is a fast-growing sport**
- Good for all ages, particularly seniors**
- City of SD has co-lined courts, mainly on indoor basketball courts, but no dedicated facility**
- Kearny Mesa Rec: 3-4 outdoor courts not completed**
- Presume a pickleball facility (16+ courts) will be included in new Robb Field plan**

PICKLEBALL ASSOC. OF SAN DIEGO

- Members joined for love of pickleball and to develop momentum for dedicated public courts in City of SD
- Became a non-profit entity to further this goal
- Met with Parks and local committees for several months to advocate for tennis court conversion – as in many communities
- Made request for temporary use of 6 PTC courts in January
- **Included in request: PASD pay to convert courts to pickleball and back to tennis when through**
- **Also included: request to run the courts and programs**

Tennis's idea of "helping" Pickleball → Multi-lined Courts

- Joint use of elementary and middle schools = dual-lined basketball courts with limited hours
 - (*Source*: emails from Sprague to Field 2022)
- Tennis Goal #1: Not one tennis court conversion
- Tennis Goal #2: We take over pickleball
 - (*Source*: emails from Sprague to Field 2021-22)

Multi-lined Courts Not the Answer



Allied Gardens:
14 hours/week



OB Rec: 11 hrs/week

Gershwin Park: 4 Busy Courts

Chalk-lined overflow, Parking issues



Pacific Beach Recreation Center



PB Rec Outdoor:
54 hrs/week



PB Rec Gym:
21 hrs/week

Elephant In The Room: Tennis Courts Often Stand Empty During Prime Pickleball Hours

- All across the country, tennis courts are being shared or repurposed for pickleball.
- Request for only 6 courts, temporarily, is a reasonable and a sound use of governmental action to address a need

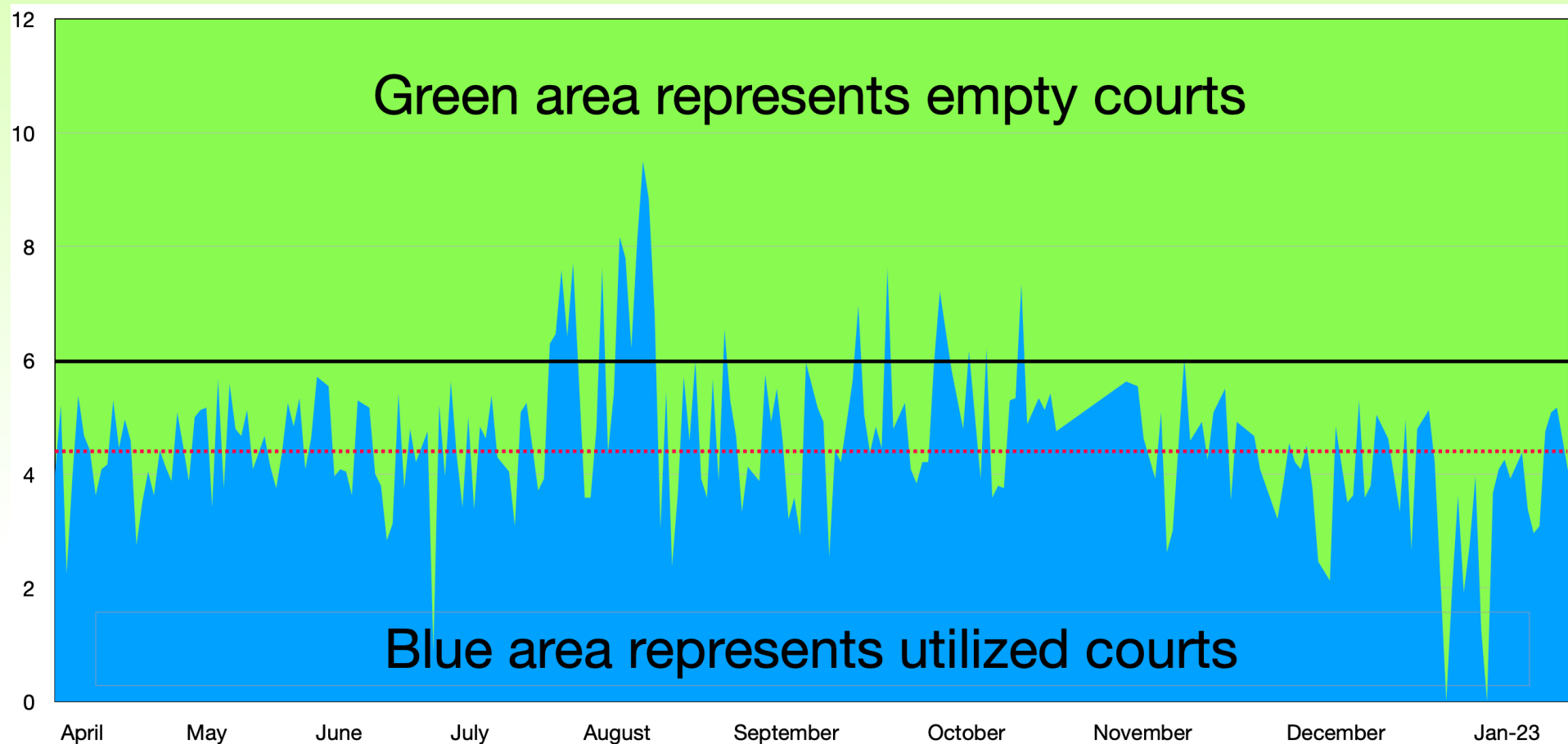
PTC Courts Chosen with Care

Not random choice, but careful analysis of:

- Central Location – near I5 and Hwy8
- Parking availability
- Nearby Tennis Alternatives
- Noise concerns
- Current court usage

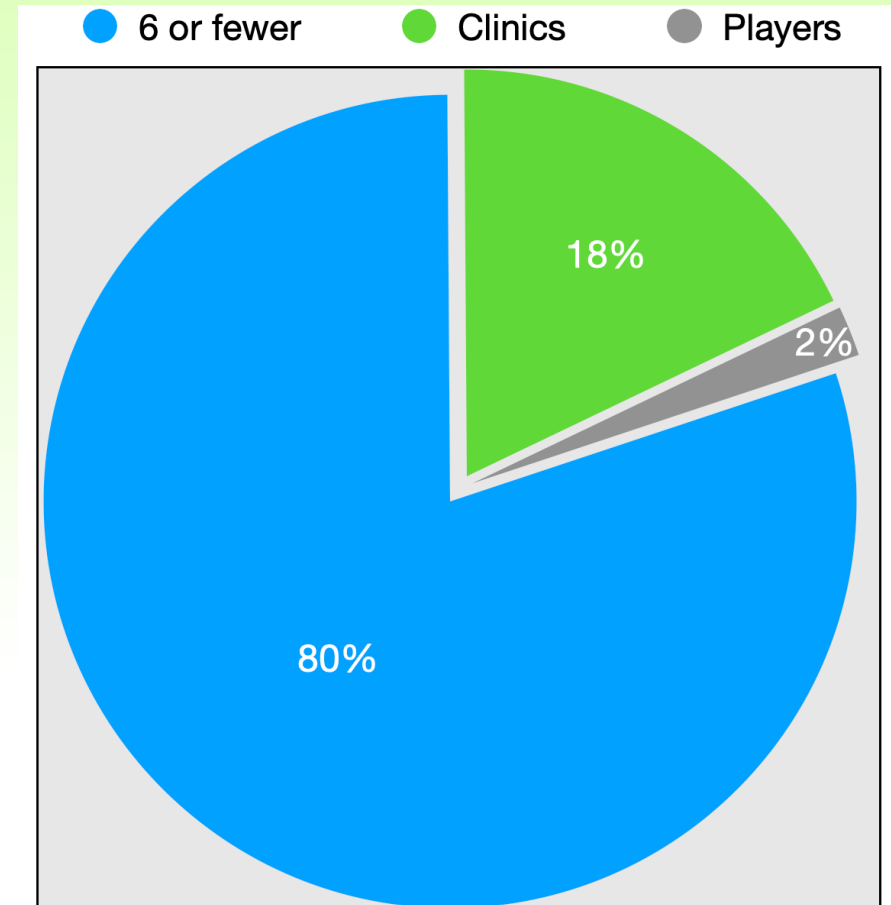
PASD Studied Court Use at PTC for 18 mos.

→ Close Look at 8 Month Period



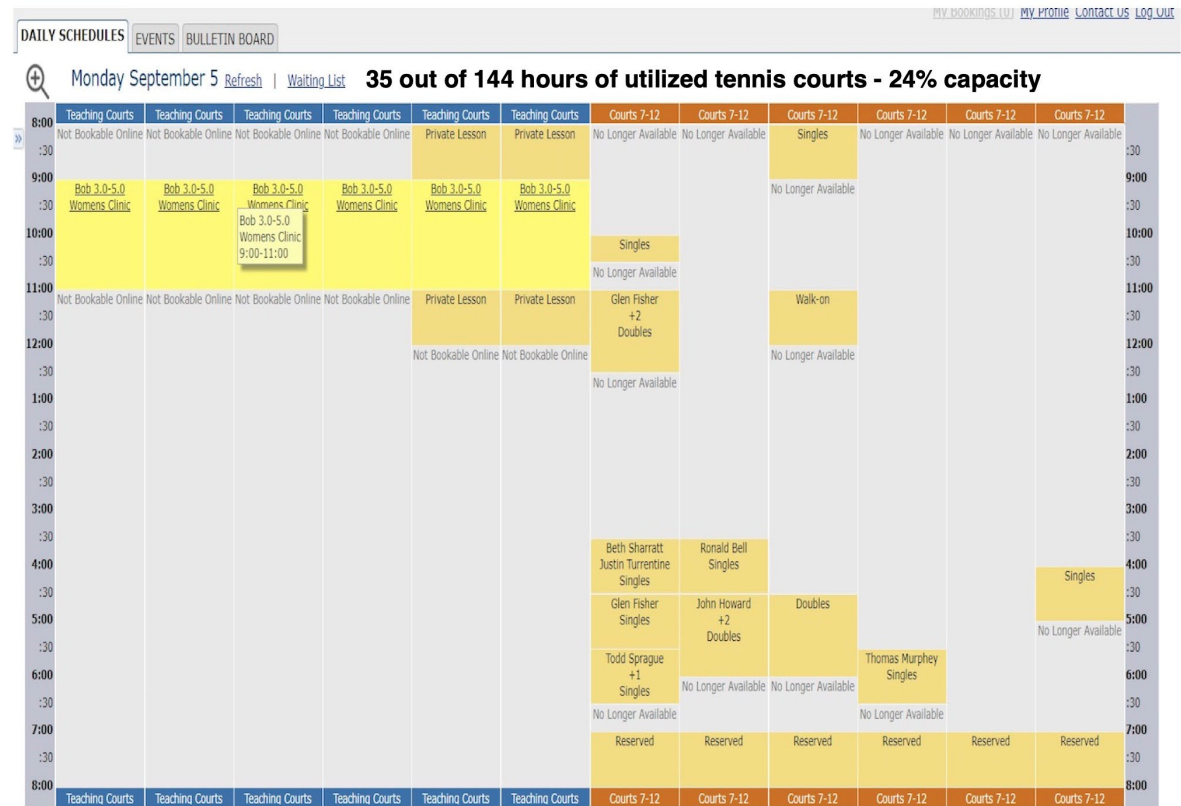
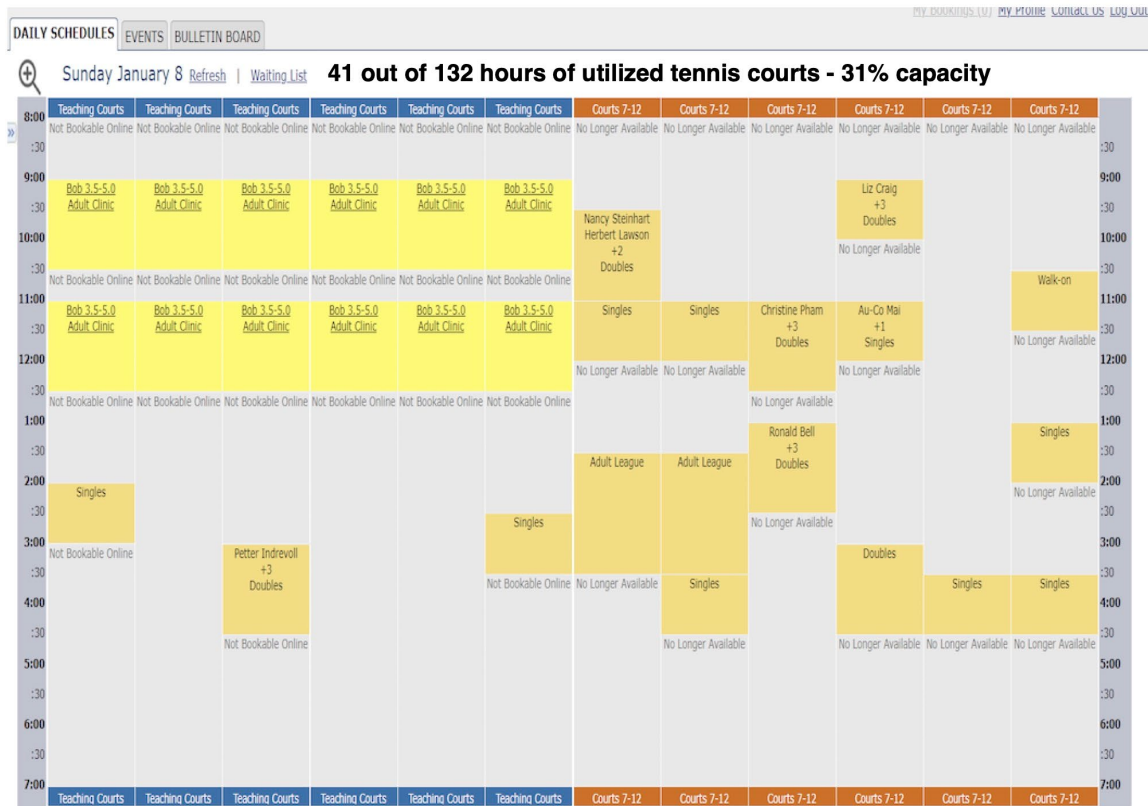
Close-up of Peak Usage Data:

- **Blue (80%)**: 6 or fewer tennis courts in use by either instructors or players.
- **Green (18%)**: 7+ tennis courts in use as a result of clinics and lessons.
- **Gray (2%)**: 7+ tennis courts are in use as a result of player bookings.



Sample of PTC reservation screenshots

250 days in row: No “cherry picking”



PTC Could Not Dispute the Data; Instead, It Changed Its Reservations To Inflate Court Usage

- Courts with “OTHER” are sometimes empty, partly empty
- Courts used for non-tennis purposes

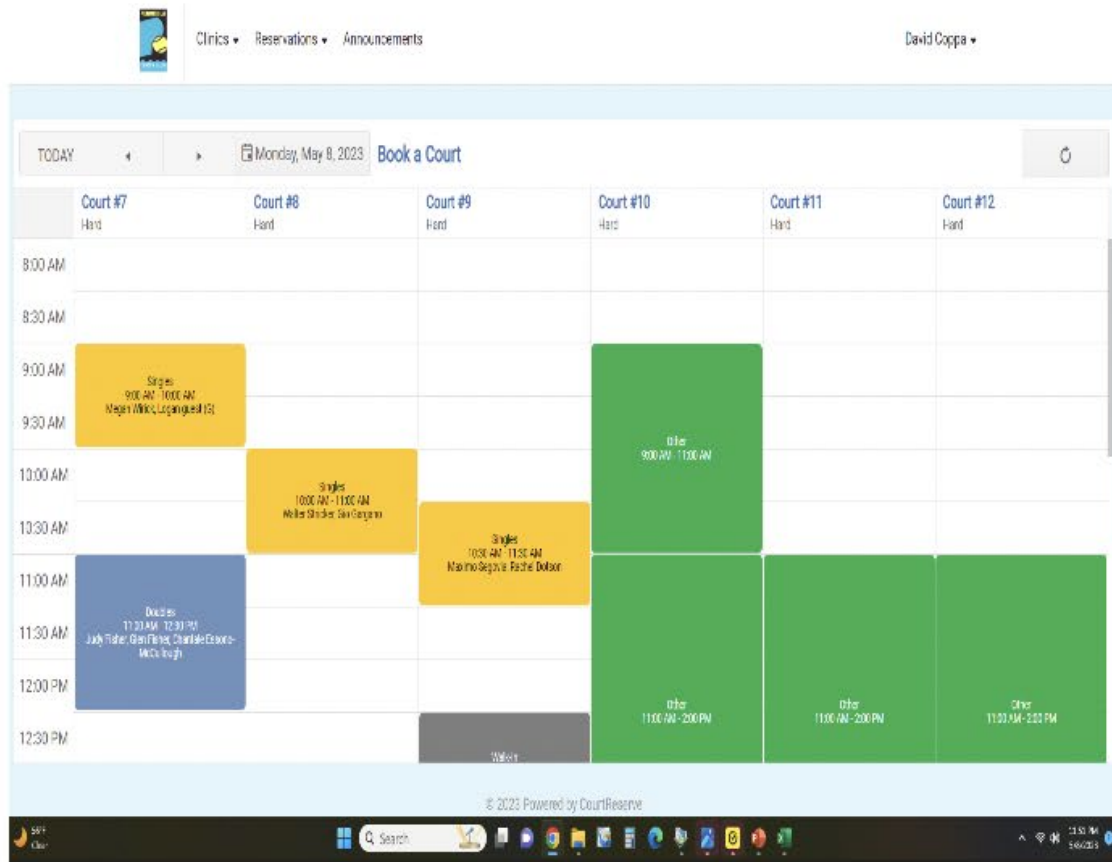
TODAY ◀ ▶ Friday, May 19, 2023 [Book a Court](#)

	Court #7 Hard	Court #8 Hard	Court #9 Hard	Court #10 Hard
8:00 AM	Other 8:00 AM - 2:00 PM	Other 8:00 AM - 2:00 PM	Other 8:00 AM - 2:00 PM	
8:30 AM				
9:00 AM				
9:30 AM				
10:00 AM				
10:30 AM				
11:00 AM				
11:30 AM				
12:00 PM				
12:30 PM				



Court Log vs Physical Observation 05/08/23

- Court logs show that courts 10, 11, 12 are booked from 11-2pm
- At 12:10pm, courts 10, 11, and 12 were observed to be empty



Friday May 19, 2023: -0- Afternoon Activity

	Court #1 Hard	Court #2 Hard	Court #3 Hard	Court #4 Hard	Court #5 Hard	Court #6 Hard
3:00 PM						
3:30 PM						
4:00 PM						
4:30 PM						
5:00 PM						
5:30 PM						
6:00 PM						
6:30 PM						
7:00 PM						
7:30 PM						

Point Loma HS Tennis Not In Danger

April 19, 2023, at about 4:00pm



6 Courts used for sectional tournament.

Across the street -- Barnes Tennis Center



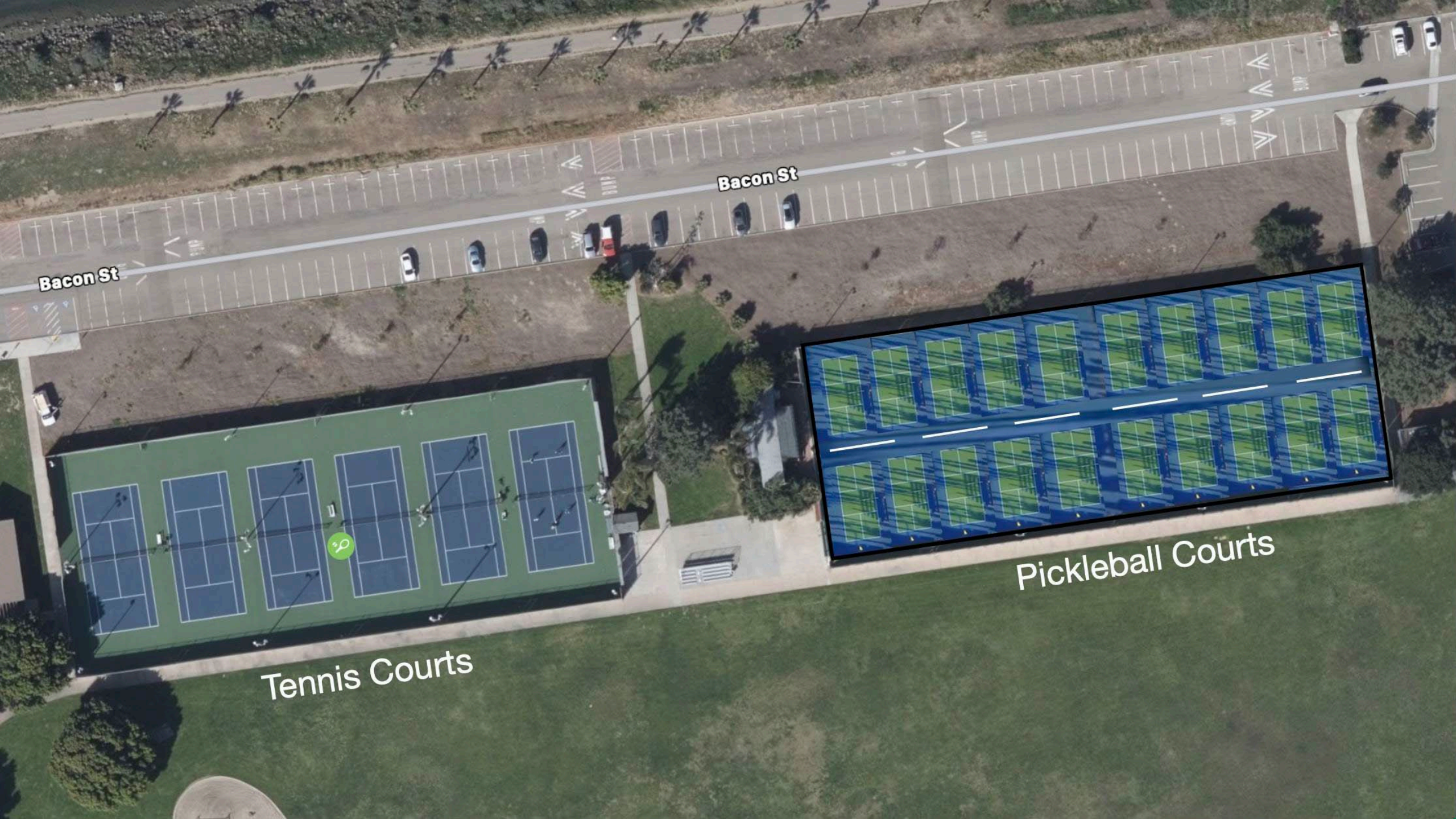
April 19th, at about 4:00pm.
10 tennis courts open.

Barnes has 23 hard courts.
Prioritized for YOUTH.



**What Would Pickleball Courts on 6
Temporary Courts Look Like?**

How Would it Work?



Bacon St

Bacon St

Tennis Courts

Pickleball Courts



Pacific Beach Tennis Club
8 Courts (3 miles away)

Alternative Sites
Robb
12 Courts

Barnes Tennis Center
25 Courts

Point Loma Tennis Club
6 Courts (1 mile away)

51 public tennis courts within a 4 miles radius

PASD Pickleball Club Vision:

- Club open park hours: 6 am to 10 pm
- Daily Open Play - \$5
- “On-Ramp” Classes for Beginners
- Ladder Play (rotating partner) - \$5
- League play/Tournaments by level
- Non-prime time *free* play
- Under 18 *always free* play
- Reserved play - \$5 per person for 2 hours

Pickleball Courts Should Be Run by Pickleball Players/Pros

- Every sport should have its own champion
- Motivated to improve pickleball experience
- Public courts should be affordable
- Not play second fiddle to tennis club plans

Cautionary Tennis Tales:

PB Tennis, Barnes, and UCRC

Barnes: From Utter Neglect to \$\$\$



\$6 per person for 2 hours



\$14 per person for 2 hours

University City Racquet Club: Hostile to Seniors

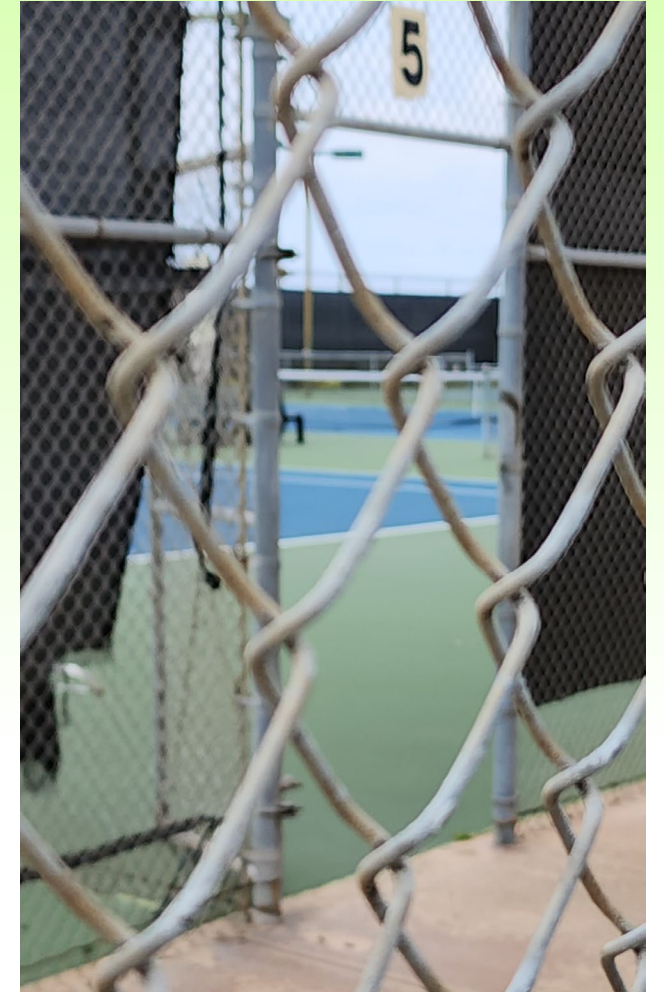


2 Tennis Courts = 6 Pickleball Courts

Thriving Pickleball Group at UCRC



But even one shared court was too much for UCRC.



CONCLUSION:

Sharing 6 Courts is the Right Thing to Do Now.

